

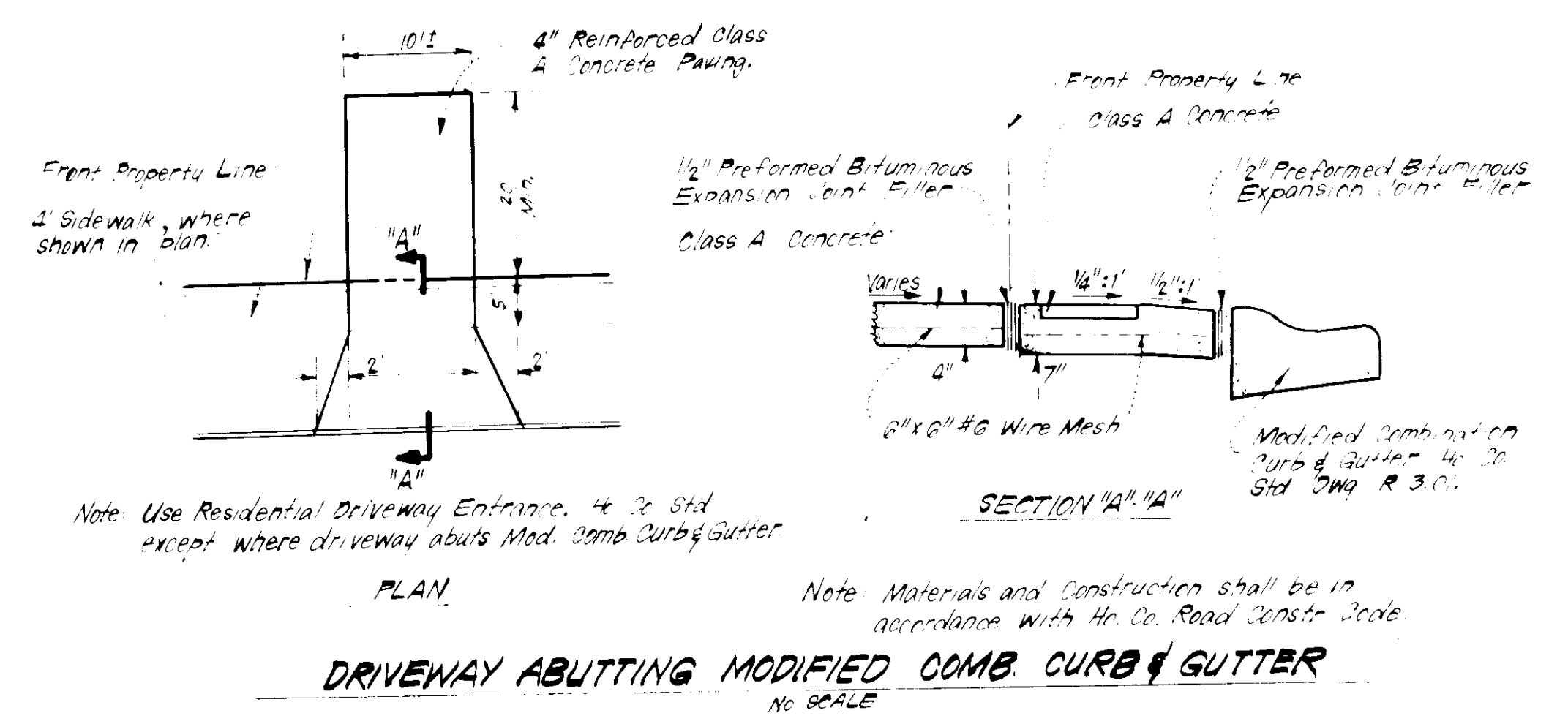
**GENERAL NOTES**

- The land included in this plan is zoned: New Town (SFLD)
- The lots shown on this plan are covered by Final Development Plan Phase P.D.P. 169, Part II
- All coordinates are based on traverse controls for Columbia established by Maps Inc. in 1968 by Purdum & Veschke which controls were tied to Maryland Bureau of Control Survey monuments and U.S. Coast & Geodetic Survey monuments in the Columbia area
- The area covered in this submission is located on Tax Map #42
- The total area included on this plan is 0.362 ± acs
- All roadways are public and existing
- Any damage to county owned rights of way shall be corrected at the developers expense.
- Total Number of Lots: 1

**LEGEND:**

- Contour Interval 2' ±
- Existing Contour 3' ±
- Proposed Contour 3' ±
- Spot Elevation 1' ±
- Direction of Drainage
- Exist. Trees to be retained

APPROVED  
DIVISION OF LAND DEVELOPMENT  
ZONING ADMINISTRATION  
HOWARD COUNTY, MD.  
DATE 3-22-83  
M. L. F. D.



**SURVEYOR'S CERTIFICATE**

I hereby certify that the information contained hereon is the same as shown on previously approved S.D.P. 81-166-C with the following exceptions:

1. House Type and Grading has been revised on Lot 42

I further certify that the Sediment & Erosion control measures, as previously approved, will not be affected, the grading is substantially the same as originally approved, the building setbacks comply with Howard County Zoning and Subdivision Regulations, and the lot has the same geometric configuration as shown on the respective recorded subdivision Plat.

2-25-83  
Date

Donald B. Sackett  
DONALD B. SACKETT  
Registered Land Surveyor  
Md. No. 6059

The contractor or developer shall contact the Construction Inspector/Survey Division, 24 hours in advance of commencement of work at 992-2417 or 792-7272.

APPROVED FOR PUBLIC WATER AND PUBLIC SEWERAGE SYSTEMS HOWARD COUNTY HEALTH DEPARTMENT	4-12-83
APPROVED HOWARD COUNTY OFFICE OF PLANNING & ZONING	4/14/83
APPROVED FOR PUBLIC WATER AND PUBLIC SEWERAGE STORM DRAINAGE SYSTEMS AND PUBLIC ROADS HOWARD COUNTY DEPARTMENT OF PUBLIC WORKS	4-8-83
CHIEF BUREAU OF ENGINEERING	4-8-83

CLARK · FINEFROCK & SACKETT ENGINEERS · PLANNERS · SURVEYORS		13115 LOCKWOOD DRIVE SILVER SPRING MARYLAND 20904	(301) 593-3400
DESIGNED J.M.E.	REVISED SITE DEVELOPMENT PLAN LOT 42		SCALE 1"=30'
DRAWN K.W.	COLUMBIA		DRAWING
CHECKED J.M.E.	VILLAGE OF KINGS CONTRIVANCE SECTION 3 AREA 2		1"=1'
DATE Feb. 1983	8TH ELECTION DISTRICT HOWARD COUNTY, MARYLAND		JOB NO. 81115
	FOR: MILLE HOME CORP. 7235 Parkway Dr., Suite 106 Hanover, Md. 21076		FILE NO. BC 114 X

SDP-83-119c