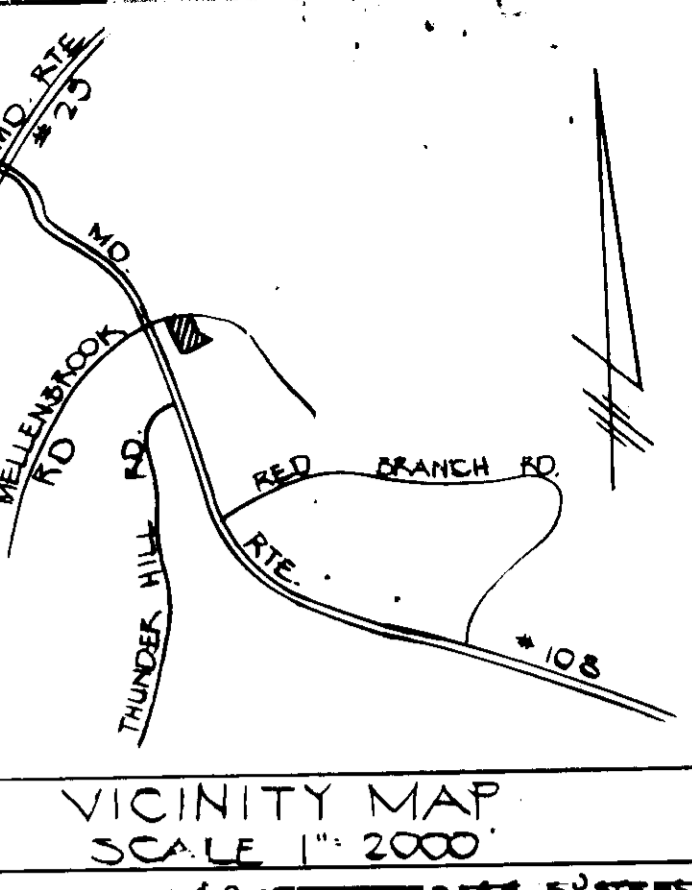
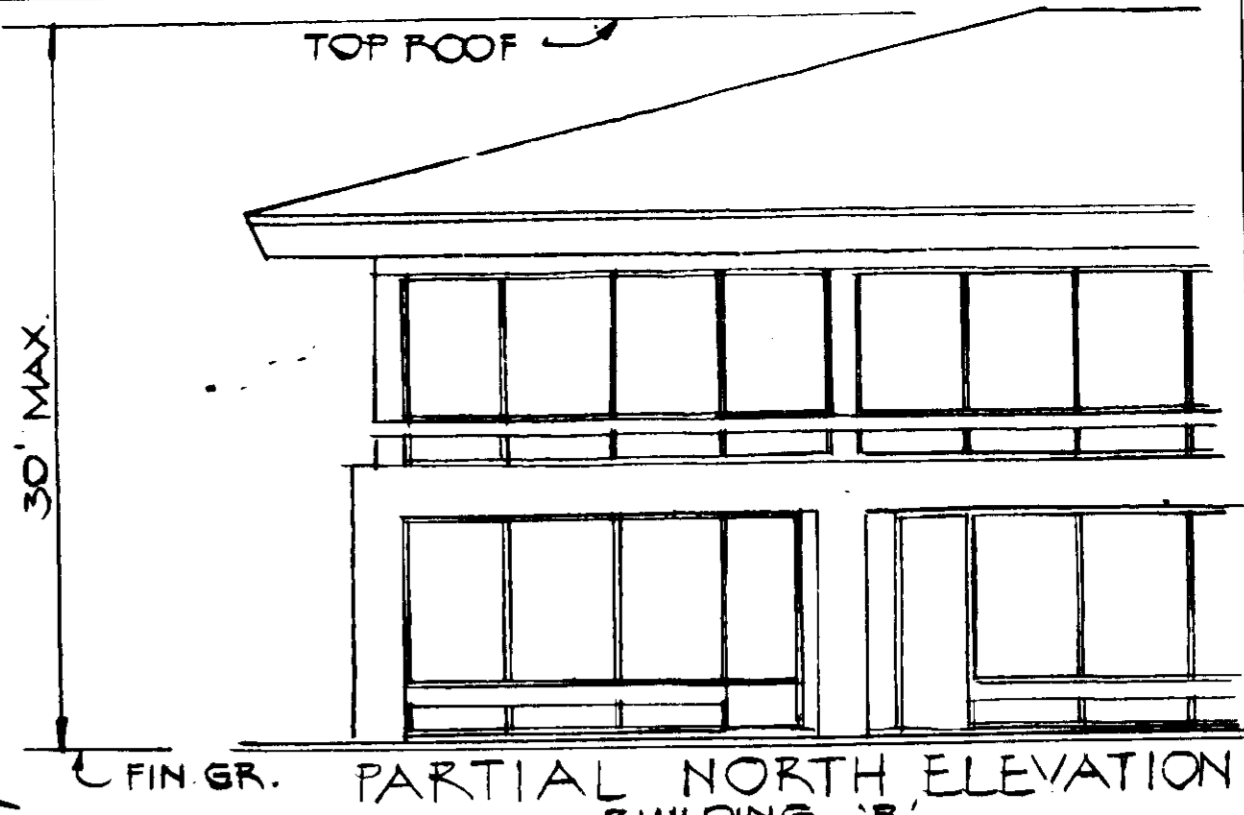
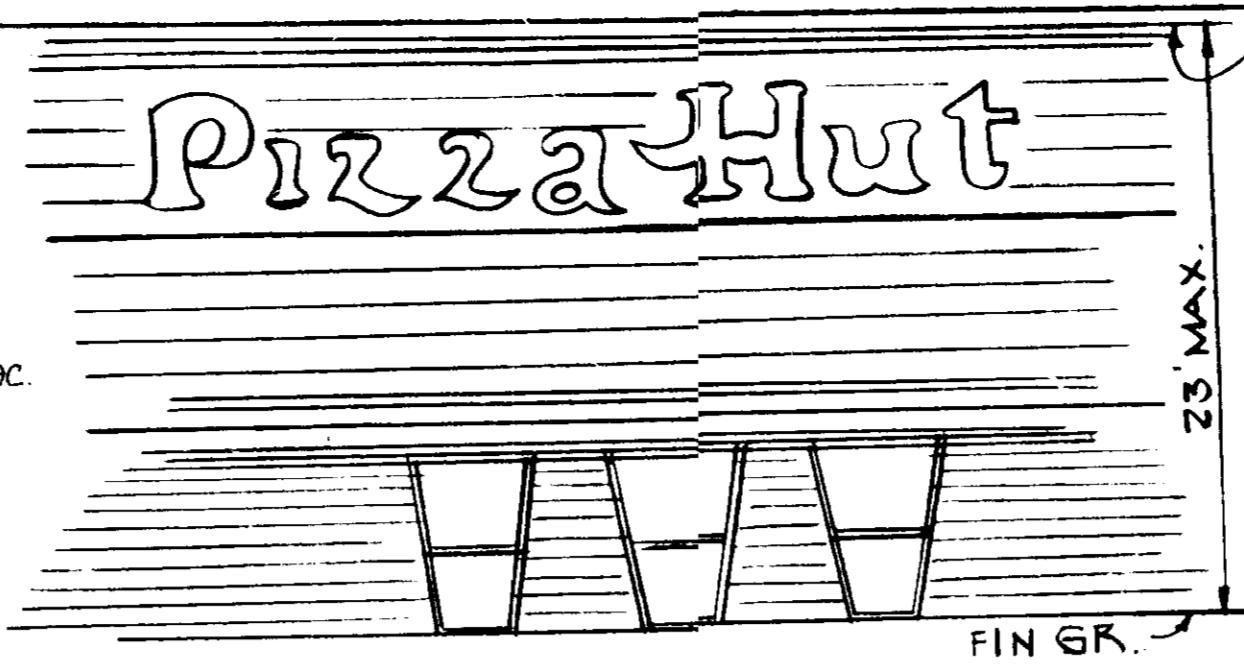


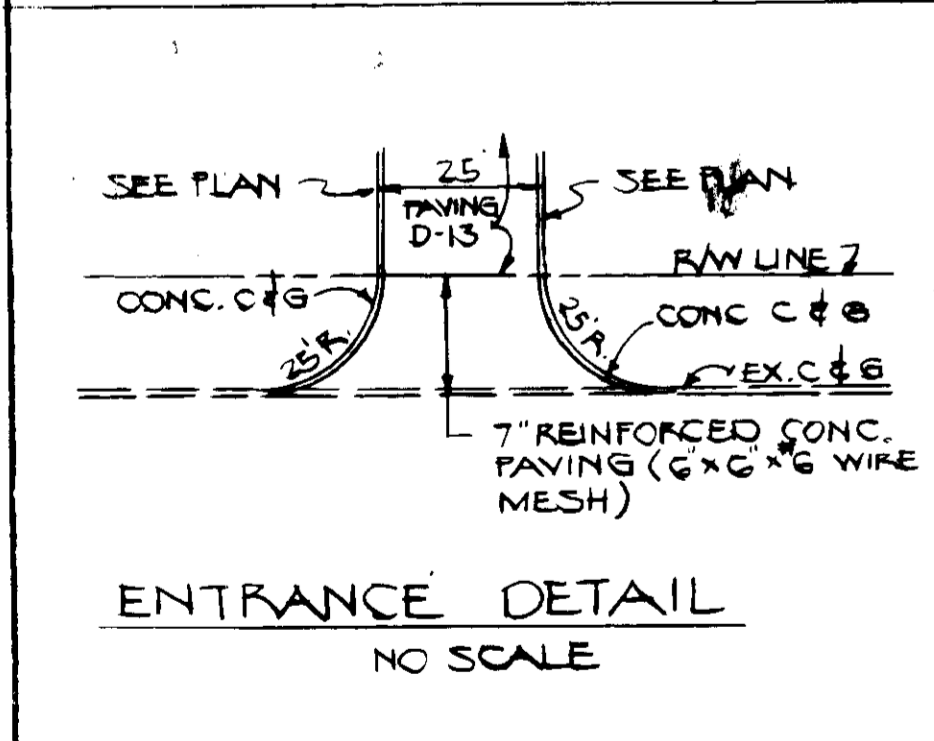
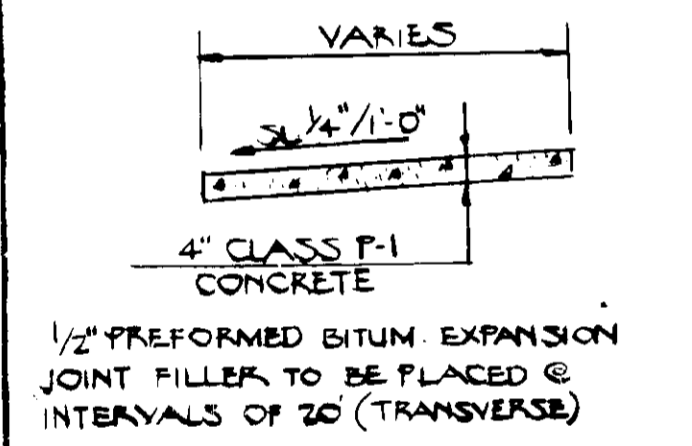
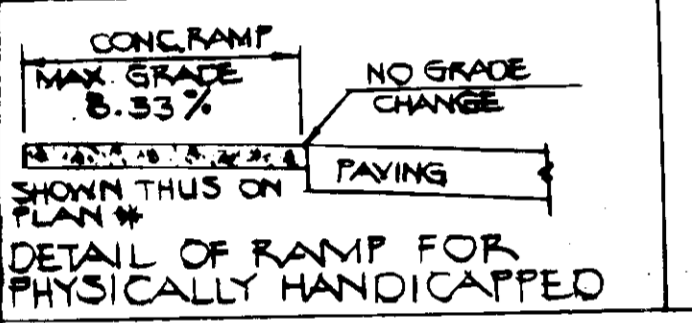
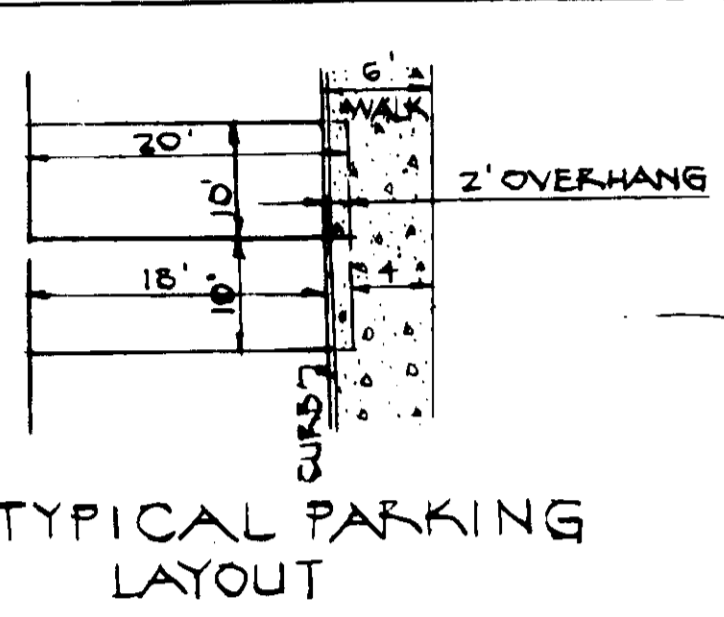
1. AREA THIS SUBMISSION: 1.05 AC ±
2. EMPLOYMENT CENTER INDUSTRIAL ZONING
3. USED USE
4. RESTAURANT 2730 S.F. BLDG. X
5. OFFICE 3990 S.F. BLDG. B
6. RETAIL 3990 S.F. BLDG. B
7. TOTAL FLOOR AREA: 14,870 S.F. BLDG. COVERAGE 9.3%
8. GREEN SPACE PROVIDED: 0.75 AC ± 34%
9. THIS PARCEL IS NOT AFFECTED BY A 100 YEAR FLOOD PLAN
10. PARKING REQUIREMENTS:
  - BLDG. X - RESTAURANT 2730 SF / 200 ± 14 OR 93 SEATS @ 1 SF / 3 SEATS = 31
  - BLDG. B - RETAIL 3990 SF / 200 ± 20
  - BLDG. B - OFFICE 3990 SF / 500 ± 8
  - TOTAL REQUIRED: 42 OR 59 SEAT COUNT IS USED
  - TOTAL PROVIDED: 76 ± 6 HS.
11. ALL HANDICAPPED SPACES SHALL BE CLEARLY MARKED - THIS RESERVED FOR PHYSICALLY HANDICAPPED PERSONS - SIGN SHOWN THUS ON PLAN
12. ANY DAMAGE TO THE COUNTY RIGHT OF WAY OR PAVING WILL BE CORRECTED AT THE DEVELOPER'S EXPENSE
13. ALL MATERIALS & CONSTRUCTION SHALL BE IN ACCORDANCE WITH THE HOWARD CO. ROAD CONSTRUCTION CODE
14. INSTALLATION OF ALL TRAFFIC CONTROL DEVICES SHALL BE IN ACCORDANCE WITH THE MANUAL OF UNIFORM TRAFFIC CONTROL DEVICES, 1971 REVISED EDITION
15. CONTRACTOR SHALL NOTIFY A.T. & T. PRIOR TO EXCAVATION IN VICINITY OF A.T. & T. EASEMENT. CALL 303-3553 OR 550-0100
16. TOPOGRAPHY SHOWN HEREON IS BASED ON FINISHED GRADES AS SHOWN ON GRADING PLAN DATED FEB. 1980 PREPARED BY CLARK-FINEBROCK & SACKETT.

**SITE ANALYSIS:**

AREA TO BE ROOFED:	5160'
AREA TO BE PAVED:	19440'
AREA TO BE SEEDED:	21355'
AREA TO BE UNDISTURBED:	0
TOTAL AREA THIS SUBMISSION:	45,955' ± 1.05 AC.



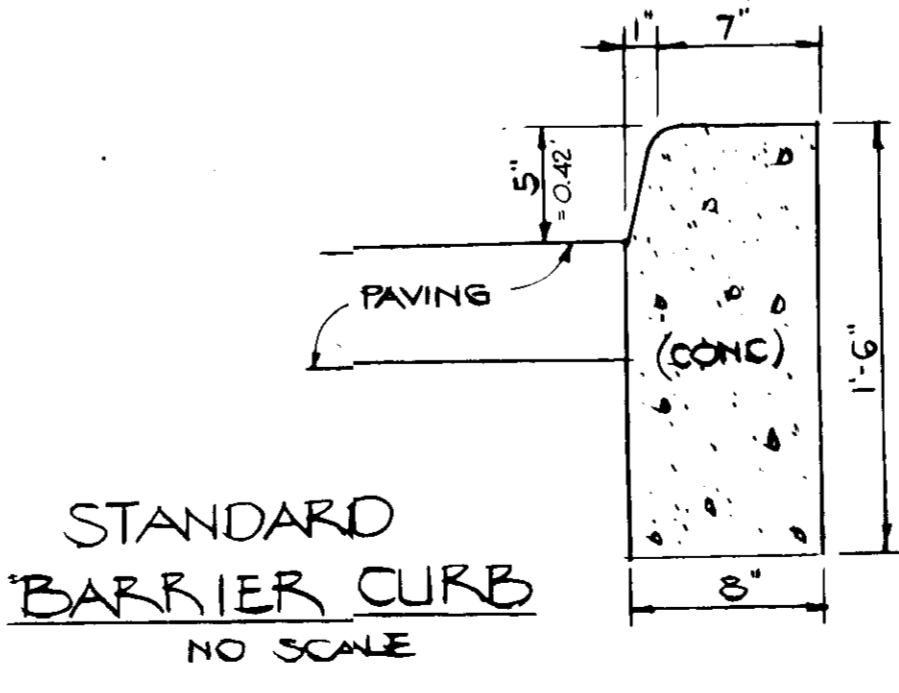
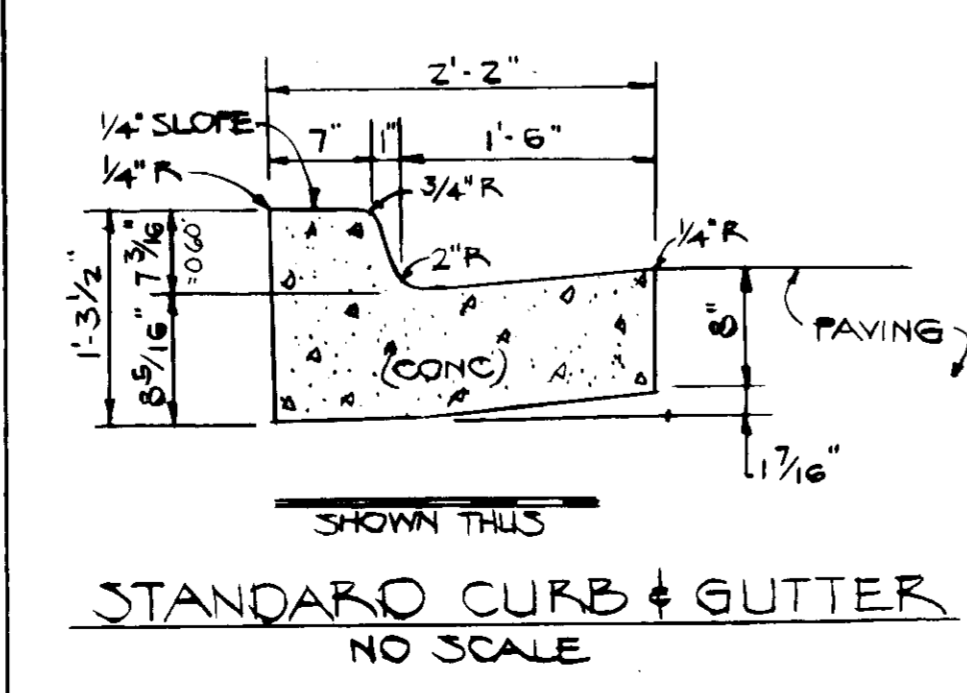
MD. RTE. # 108



**DETAIL OF PAVEMENT**

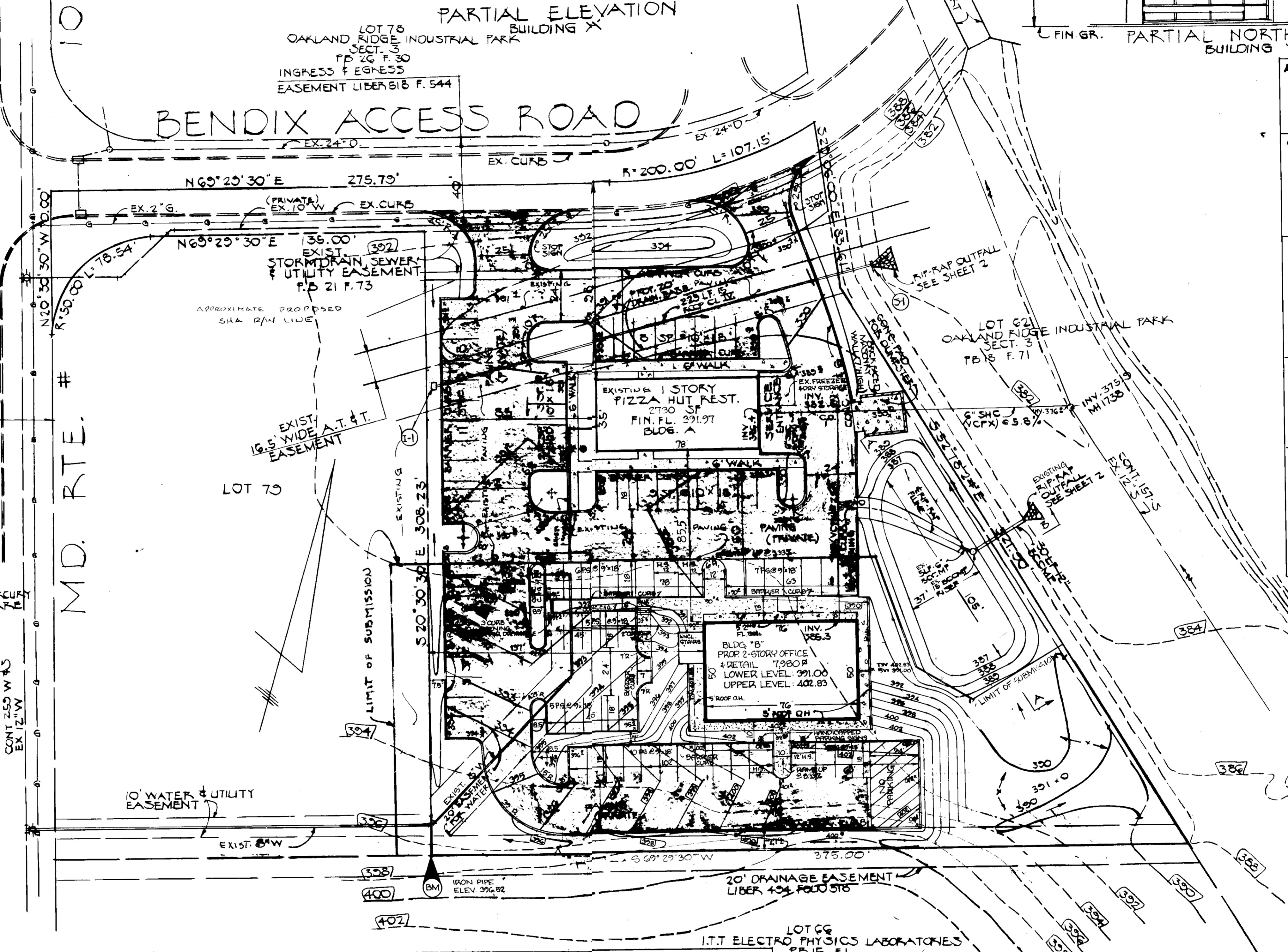
NOTE: BASE COURSE WILL BE FRIMED IN ACCORDANCE WITH HOWARD COUNTY ROAD CONSTRUCTION CODE AND STANDARD SPECS. SEE C-30-3 TACK COAT SHALL BE APPLIED AS REQUIRED BY THE HOWARD CO. ROAD CONSTRUCTION CODE AND STANDARD SPECS C-31-4 ROAD CODE ± ALL CONSTRUCTION SHALL BE IN ACCORDANCE WITH THE HOWARD CO. ROAD CONSTRUCTION CODE ±

STANDARD SPECIFICATIONS:  
 CLEARING AND BRUDDING REFER TO ARTICLE C-1  
 SUBGRADE REFER TO ARTICLE C-2  
 BASE COURSE REFER TO ARTICLE C-31 OR C-33  
 SURFACE COURSE REFER TO ARTICLE 31



**DEVELOPER'S CERTIFICATE**

I CERTIFY THAT ALL DEVELOPMENT AND/OR CONSTRUCTION WILL BE DONE ACCORDING TO THE PLAN OF DEVELOPMENT AND PLAN FOR EROSION AND SEDIMENT CONTROL THAT ALL RESPONSIBLE PERSONNEL INVOLVED IN THE CONSTRUCTION WILL HAVE A CERTIFICATE OF ATTENDANCE AT A DEPARTMENT OF NATURAL RESOURCES APPROVED TRAINING PROGRAM FOR THE CONTROL OF SEDIMENT & EROSION BEFORE BEGINNING THE PROJECT. I ALSO AUTHORIZE PERIODIC INSPECTION BY THE HOWARD SOIL CONSERVATION DISTRICT OR THEIR AUTHORIZED AGENTS AS ARE DETERMINED NECESSARY.



**APPROVED:** FOR PUBLIC WATER & PUBLIC SEWERAGE SYSTEMS  
 HOWARD COUNTY HEALTH DEPARTMENT  
 County Health Officer: *John Barnes* 3-3-87  
 DATE

**APPROVED:** FOR SOIL EROSION & SEDIMENT CONTROL  
 HOWARD SOIL CONSERVATION DISTRICT  
 Howard S.C.D. *David Hume* 3-2-87  
 DATE

**REVIEWED FOR:** HOWARD S.C.D.  
 & MEETS TECHNICAL REQUIREMENTS.

**APPROVED:** HOWARD COUNTY OFFICE OF PLANNING & ZONING  
 Planning Director: *John M. ...* 3-2-87  
 DATE

**CHIEF, DIV. OF LAND DEVELOPMENT & ZONING ADMINISTRATION**  
 DATE

**APPROVED:** FOR PUBLIC WATER, PUBLIC SEWER, STORM DRAINAGE SYSTEMS & PUBLIC ROADS  
 HOWARD COUNTY DEPT. OF PUBLIC WORKS  
 Director: *Nummy* DATE

**CHIEF, BUREAU OF ENGINEERING**  
 DATE

**ENGINEER'S CERTIFICATE**

I CERTIFY THAT THE PLAN FOR EROSION AND SEDIMENT CONTROL REPRESENTS A PRACTICAL AND WORKABLE PLAN BASED ON MY PROFESSIONAL KNOWLEDGE OF THE SITE CONDITIONS AND THAT IT WAS PREPARED IN ACCORDANCE WITH THE REQUIREMENTS OF THE HOWARD SOIL CONSERVATION DISTRICT.

*Walter Park* 12-8-1982

**DEVELOPER:**  
 PIZZA HUT OF MARYLAND, INC.  
 200 GORMAN PLAZA BLDG.  
 COLUMBIA, MD.

**ENGINEER:**  
 HUPKINS ASSOCIATES, INC.  
 231 JOSEPH SQUARE  
 COLUMBIA, MD 21044

**SITE DEVELOPMENT PLAN**  
 LOT 80 SECTION 3  
 OAKLAND RIDGE INDUST. PARK  
 ELECTION DISTRICT 2  
 HOWARD CO, MD.  
 SCALE 1" = 30'

DECEMBER 6, 1982  
 TAX MAP: 30  
 PARCEL: 203  
 PLAT BOOK 27 F. 47  
 REVISION TO 609 81-90

STRUCTURE SCHEDULE					
NO.	TYPE	INV. IN	INV. OUT	TOP	HO. CO. STD.
I-1	C INLET	-	386.86	300.00	16" C P110 C
S-1	C ENDWALL	381.80	-	363.80	12" C P107

\* THROAT OPEN ON NORTH, SOUTH & WEST SIDES ELEV 300.00

APPROVED FOR PUBLIC WATER & PLUMBING SYSTEMS  
HOWARD COUNTY HEALTH DEPARTMENT

*Joseph P. Ryan*  
COUNTY HEALTH OFFICER #8. 2-3-83  
DATE

THIS DEVELOPMENT PLAN IS APPROVED FOR SOIL EROSION AND SEDIMENT CONTROL BY THE HOWARD SOIL CONSERVATION DISTRICT

*James J. Ryan*  
HOWARD S.C.D. 2-2-83  
DATE

REVIEWED FOR HOWARD S.C.D. AND MEETS TECHNICAL REQUIREMENTS

*James J. Ryan*  
U.S. SOIL CONSERVATION SERVICE 2-2-83  
DATE

APPROVED: HOWARD COUNTY OFFICE OF PLANNING & ZONING  
*James J. Ryan*  
PLANNING DIRECTOR 2-7-83  
DATE

CHIEF, DIV. OF LAND DEVELOPMENT & ZONING ADMIN. DATE

APPROVED FOR PUBLIC WATER, PUBLIC SEWERAGE, STORM DRAINAGE & PUBLIC ROADS  
HOWARD COUNTY DEPT. OF PUBLIC WORKS

*James J. Ryan*  
DIRECTOR 2-25-83  
DATE  
*James J. Ryan*  
CHIEF, BUREAU OF ENGINEERING DATE

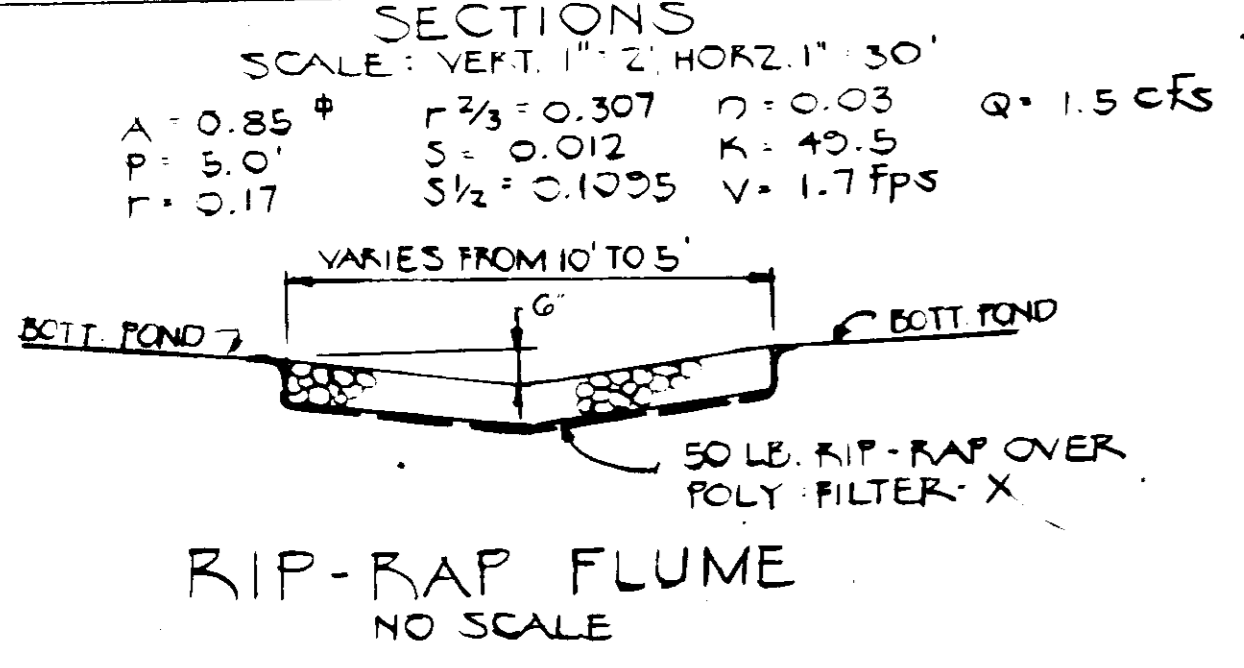
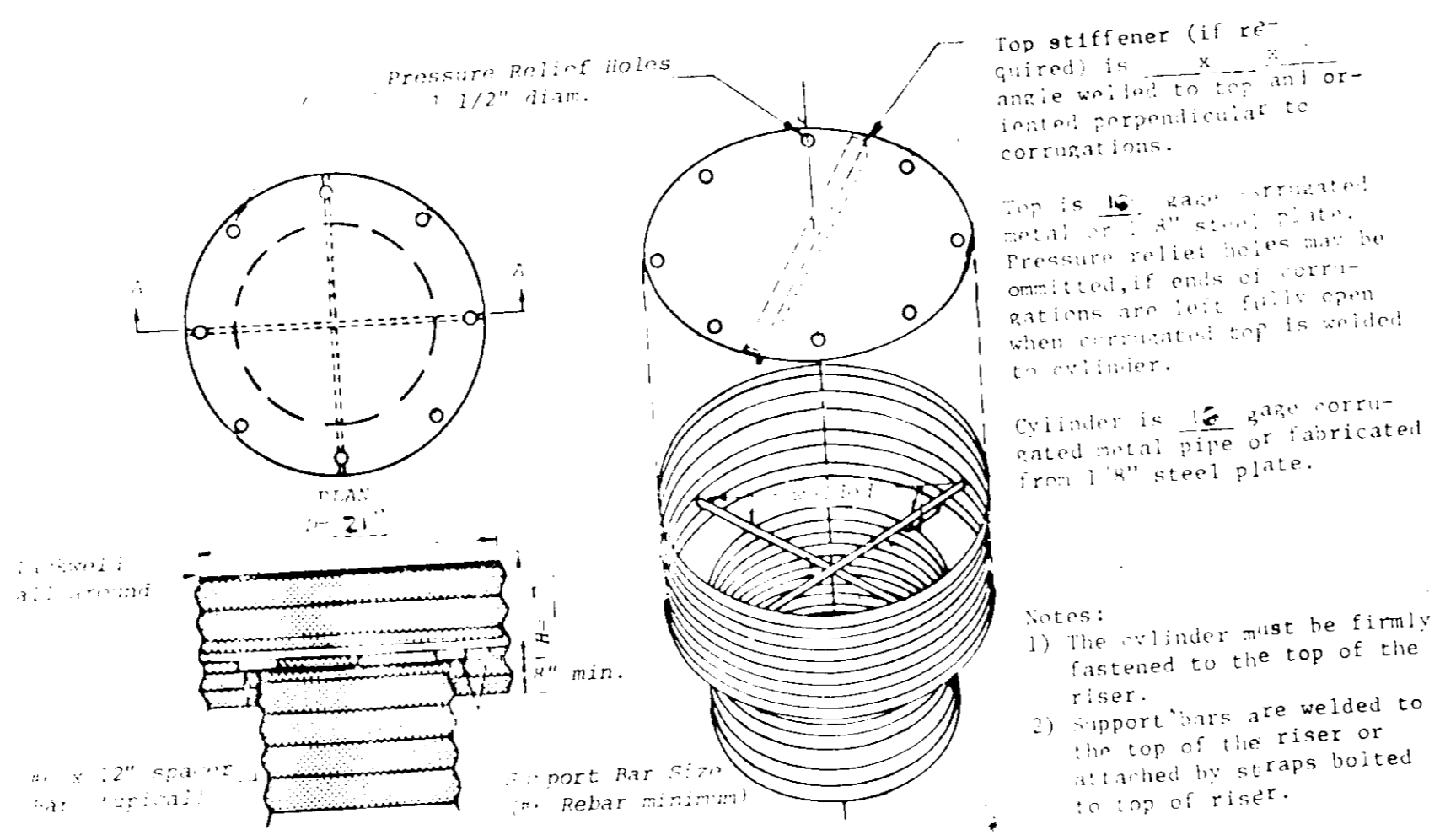
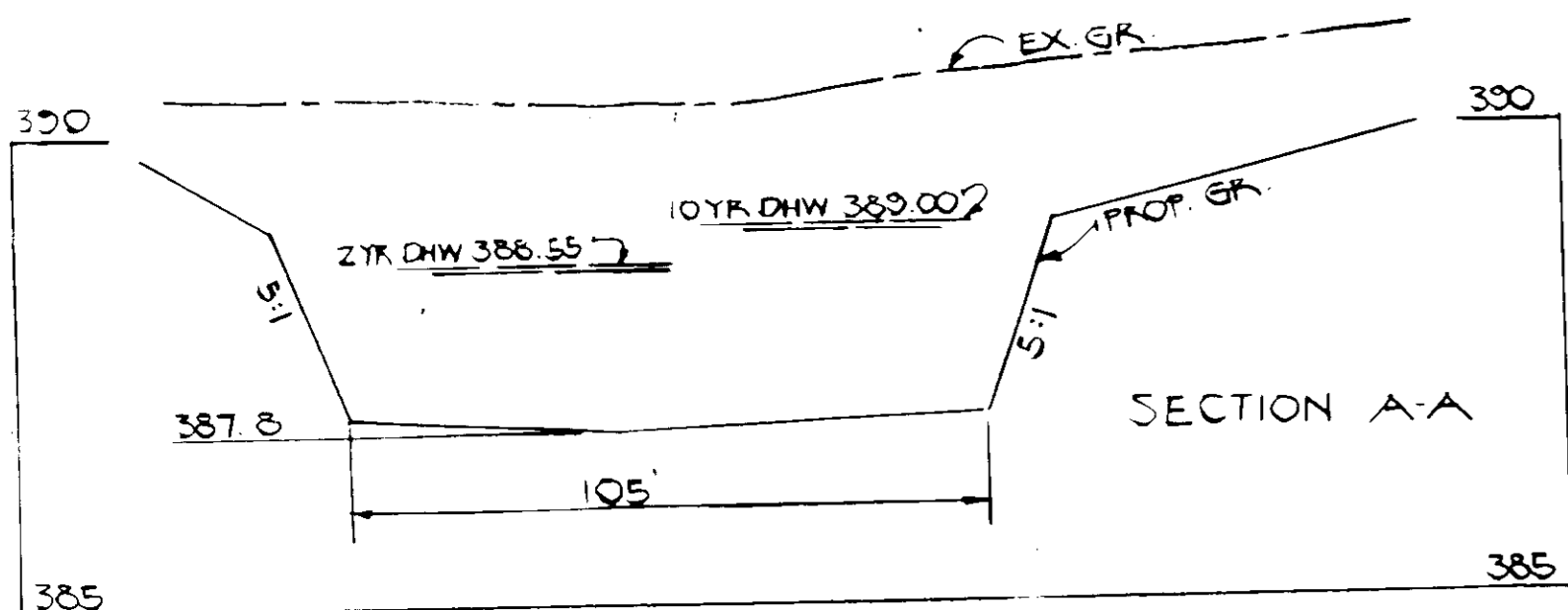
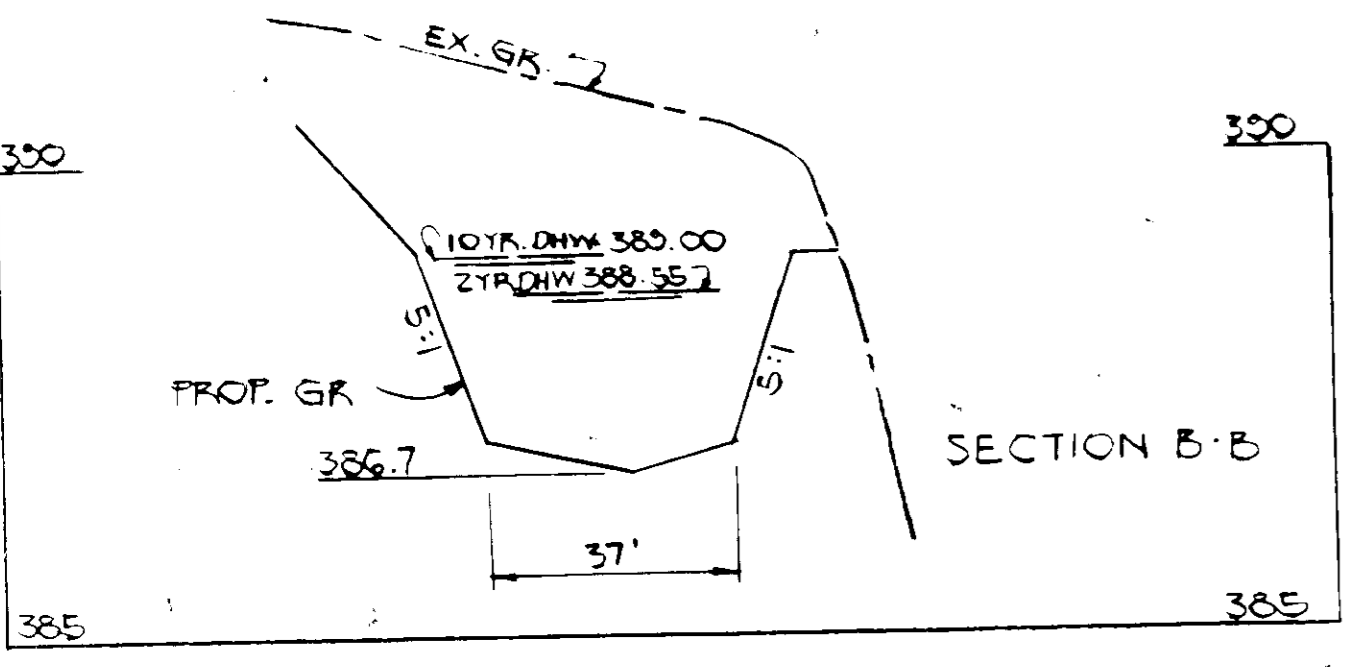
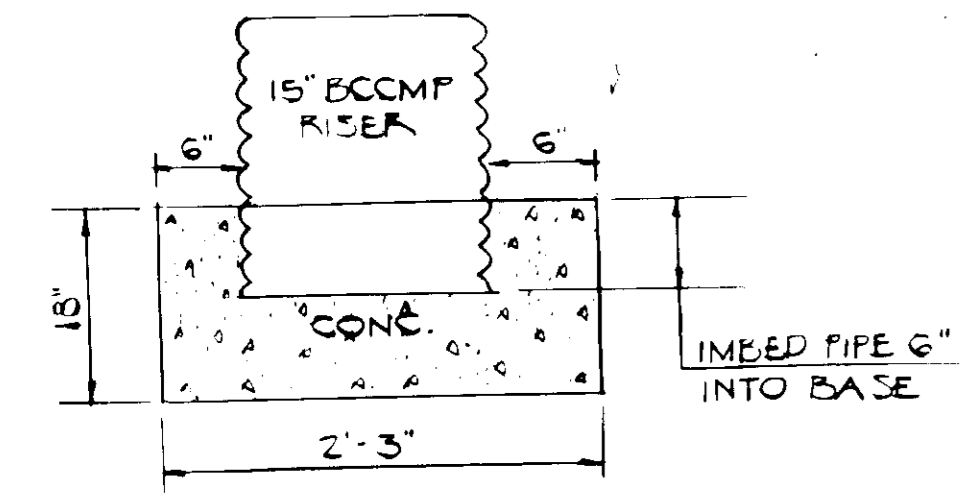
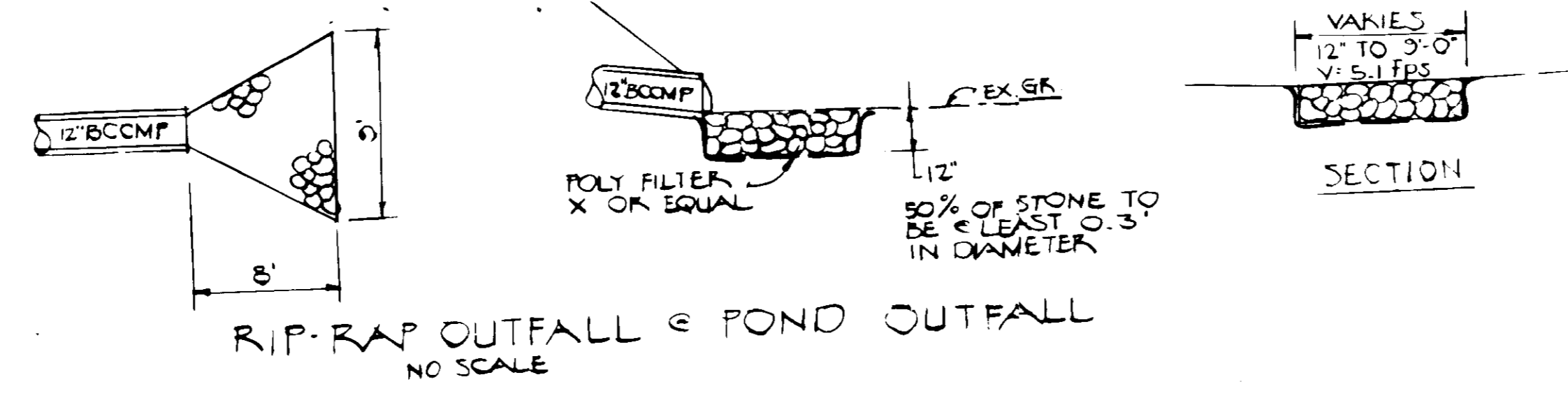
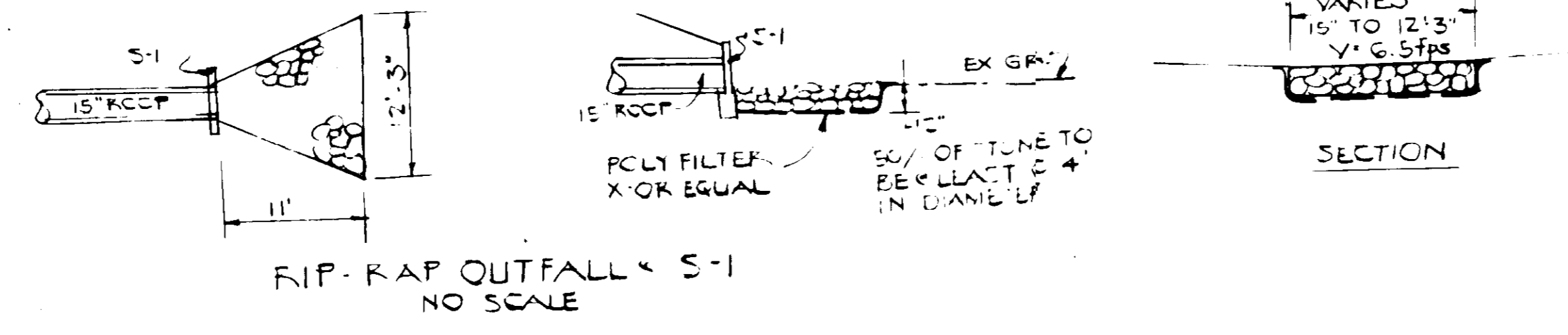
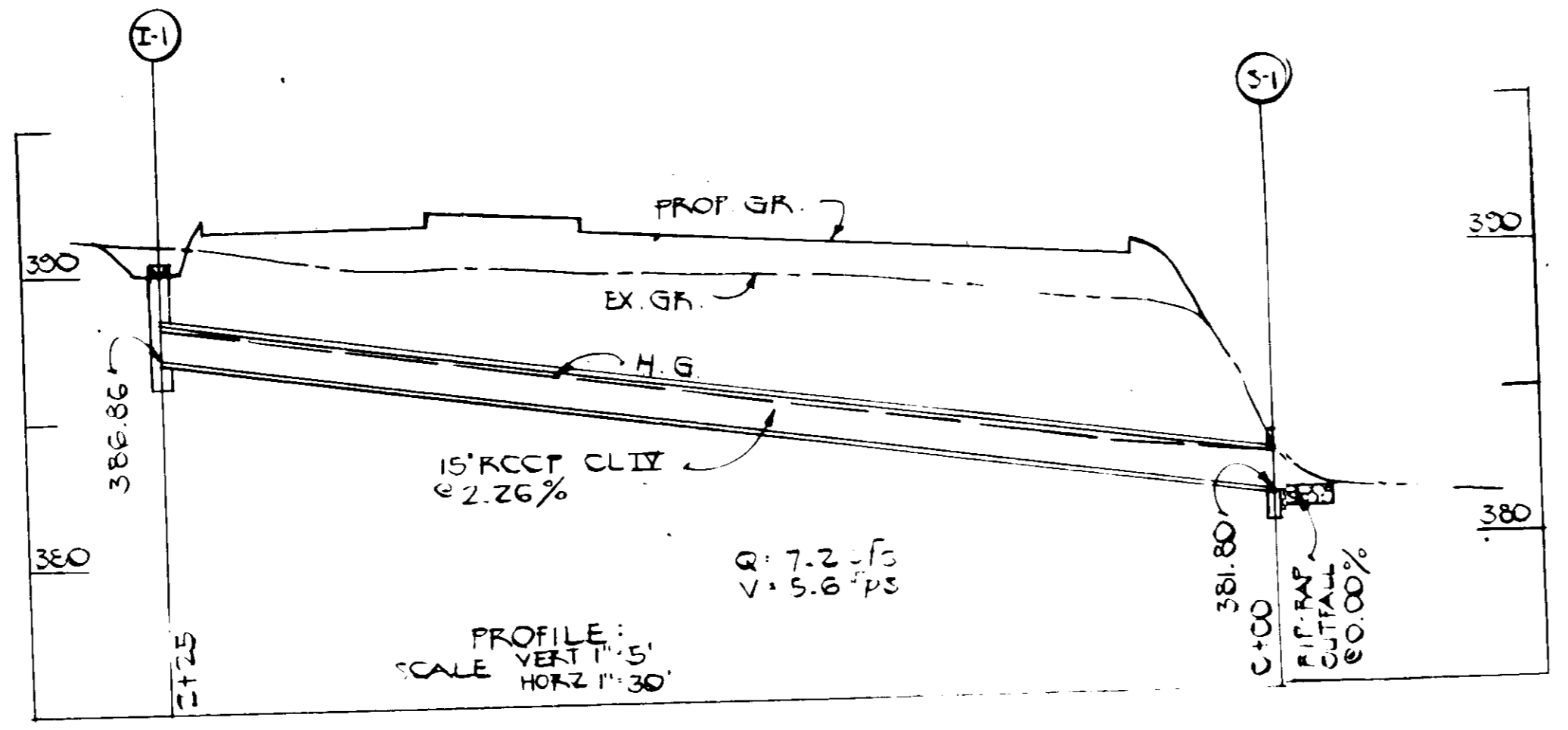
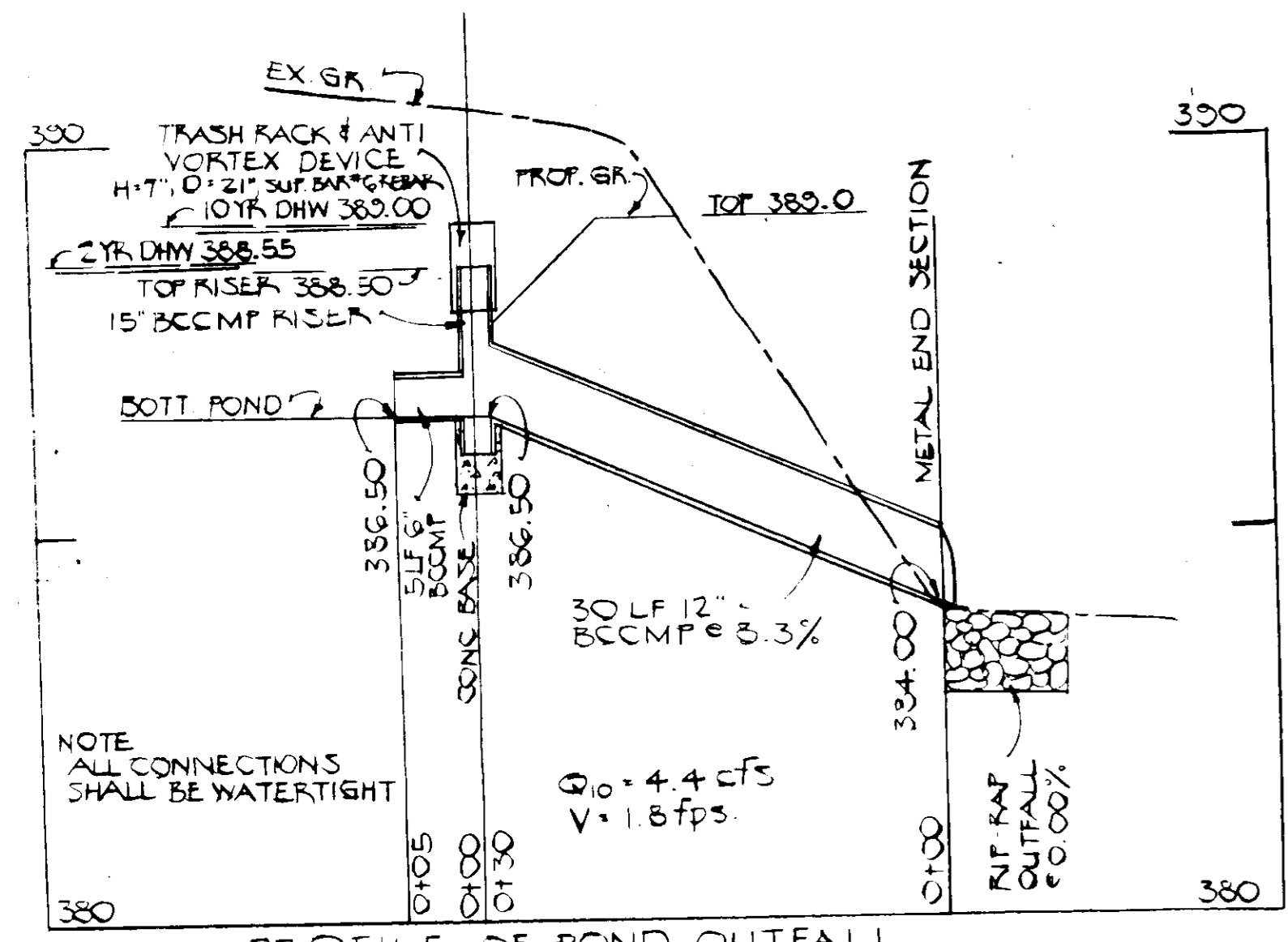
**DEVELOPER'S CERTIFICATE**  
I/WE CERTIFY THAT ALL DEVELOPMENT & CONSTRUCTION WILL BE DONE ACCORDING TO THIS PLAN OF DEVELOPMENT & PLAN FOR EROSION & SEDIMENT CONTROL & THAT ALL EROSION CONTROL MEASURES INCLUDED IN THE CONSTRUCTION PROJECT WILL HAVE A CERTIFICATE OF ATTENDANCE AT A DEPARTMENT OF NATURAL RESOURCES APPROVED TRAINING PROGRAM FOR THE CONTROL OF SEDIMENT & EROSION BEFORE BEGINNING THE PROJECT. I/WE ALSO AUTHORIZE FURTHER SINGLE INSPECTION BY THE HOWARD SOIL CONSERVATION DISTRICT OR THEIR AUTHORIZED AGENTS AS NECESSARY.

**ENGINEER'S CERTIFICATE**  
I CERTIFY THAT THE PLAN FOR EROSION AND SEDIMENT CONTROL REPRESENTS A PRACTICAL AND WORKABLE PLAN BASED ON MY PROFESSIONAL KNOWLEDGE OF THE SITE CONDITIONS AND THAT IT WAS PREPARED IN ACCORDANCE WITH THE REQUIREMENTS OF THE HOWARD SOIL CONSERVATION DISTRICT.

*Walter Parr* 12-8-1982  
**DEVELOPER**  
PIZZA HUT OF MARYLAND, INC.  
200 GORMAN PLAZA BLDG.  
COLUMBIA, MD.  
**ENGINEER**  
HUDKINS ASSOCIATES, INC.  
231 JOSEPH SQUARE  
COLUMBIA, MD 21044

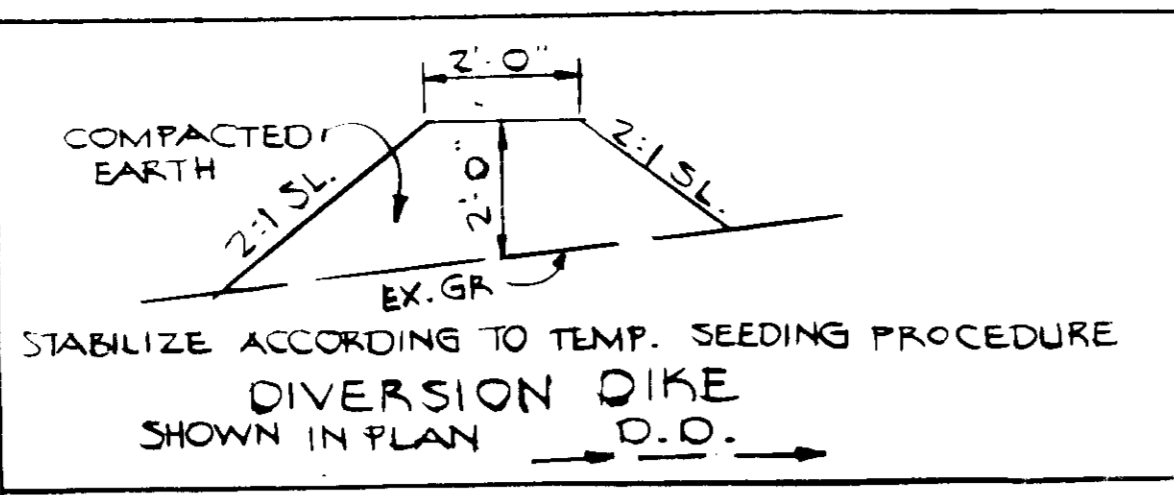
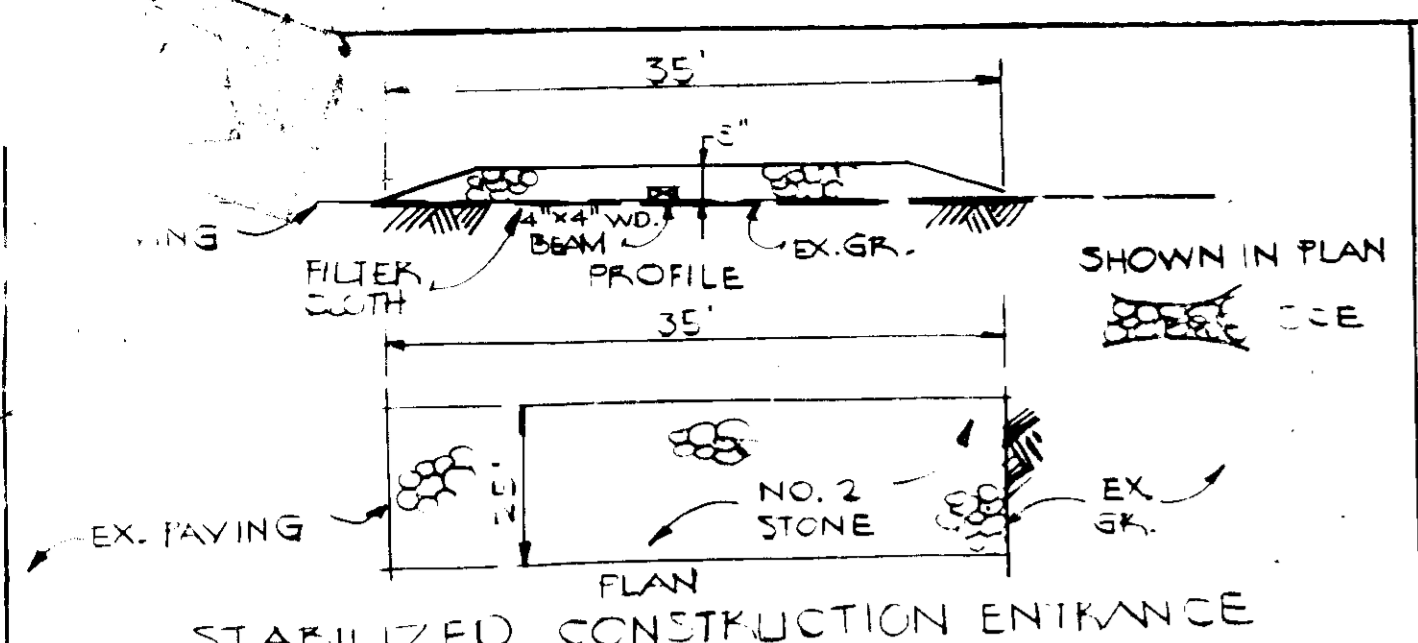
APPROVED  
SINCE BOARD  
HOWARD COUNTY  
1-26-83

**SITE DEVELOPMENT PLAN**  
LOT 80 SECTION 3  
OAKLAND RIDGE INDUST. PARK  
ELECTION DISTRICT 2  
HOWARD CO., MD.  
SCALE: AS SHOWN  
DECEMBER 6, 1982



SECTIONS  
SCALE: VERT. 1" = 2', HORIZ. 1" = 30'  
A = 0.85 # r<sup>2/3</sup> = 0.307 D = 0.03 Q = 1.5 cfs  
P = 3.0' S = 0.012 K = 49.5  
T = 0.17 S<sup>1/2</sup> = 0.1095 V = 1.7 fps





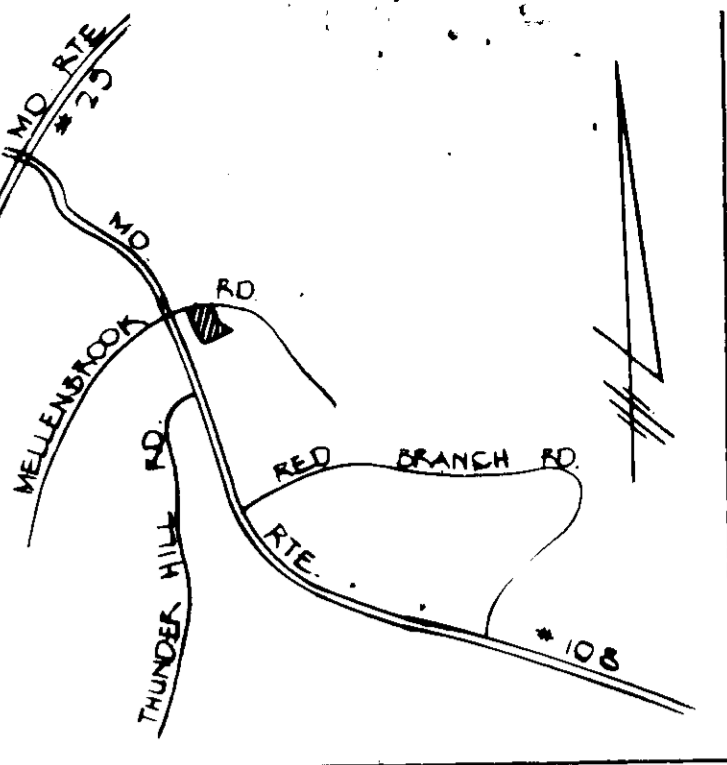
**PERMANENT SEEDING NOTES**

1. APPLY 50 LBS/1000 SF OF LIMESTONE.
2. APPLY FERTILIZER @ RATE OF 25 LBS. OF 10X10X10 PER 1000 SF DEPENDING ON THE SOIL TEST.
3. HARROW OR DISC FERTILIZER AND LIMESTONE INTO SOIL TO A DEPTH OF 3 IN.
4. SEED WITH KY 31 TALL FESCUE AT RATE OF 5 LBS/1000 SF OR OTHER SCS APPROVED GRADING PLAN PER ACRE (75#\*90#/1000 S.F.)
5. MULCH WITH SMALL GRAIN STRAW 1.5 TO 2.0 TONS PER ACRE.
6. ANCHOR MULCH W/SPRAYED ASPHALT @ 0.1 GAL. SY
7. NO SLOPE SHALL EXCEED 2:1

**VEGETATIVE COVER OPTIONS**

APR 1 TO MAY 1  
MAY 1 TO AUG 15  
AUG 15 TO NOV 1  
NOV 1 TO FEB 1

1. SOIL & MULCH
2. MULCH ANCHOR TOOL THEN SEED DURING NEXT SEED PERIOD
1. SOIL
2. SEED & MULCH
1. SOIL DELAY UNTIL NEXT PERIOD IF GROUND IS FROZEN.
2. MULCH ANCHOR TOOL THEN SEED DURING NEXT SEED PERIOD

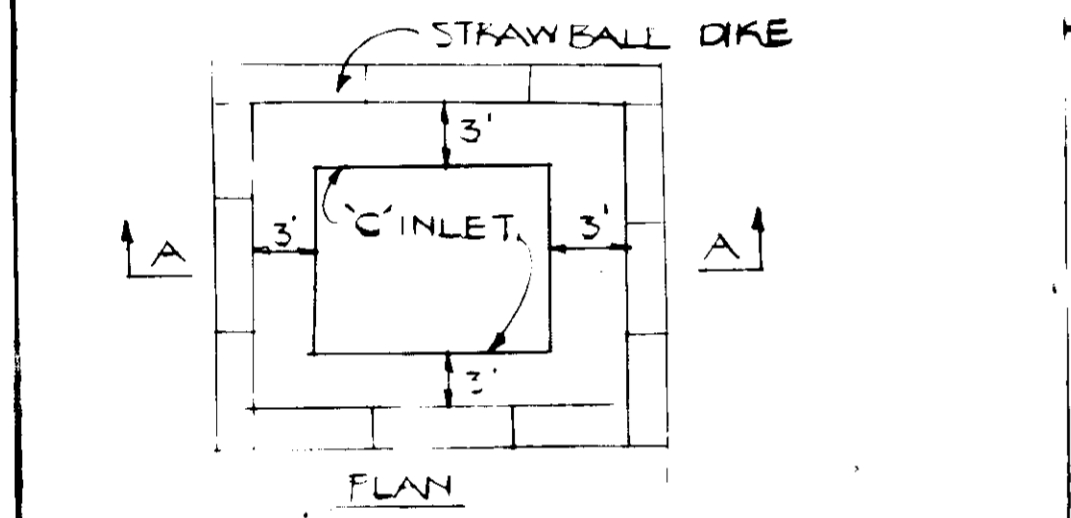


**NOTES**

1. NOTIFY THE HOWARD CO. BUREAU OF INSPECTION & PERMITS AT LEAST 24 HRS. BEFORE STARTING WORK.
2. ALL SEDIMENT CONTROL DEVICES ARE TO REMAIN IN PLACE UNTIL PERMISSON FOR REMOVAL HAS BEEN OBTAINED FROM THE HOWARD CO. BUREAU OF INSPECTION & PERMITS.
3. STRUCTURAL MEASURES SUCH AS PERMS, DIKES, TRAPS, BASINS ETC. WILL BE INSTALLED & STABILIZED ACCORDING TO THE PLAN PRIOR TO ANY DISURBANCE OF THE EXISTING SURFACE OF THE SITE.
4. ON SITE INSPECTION AND MAINTAINANCE OF ALL SEDIMENT CONTROL MEASURES, INCLUDING CLEANOUT OF TRAPS AND PERMS AND PROPER ESTABLISHMENT OF ALL PLANNED VEGETATIVE MEASURES, WILL BE THE RESPONSIBILITY OF THE DEVELOPER OR HIS REPRESENTATIVE ON THE SITE ON A CONTINUING DAY TO DAY BASIS.

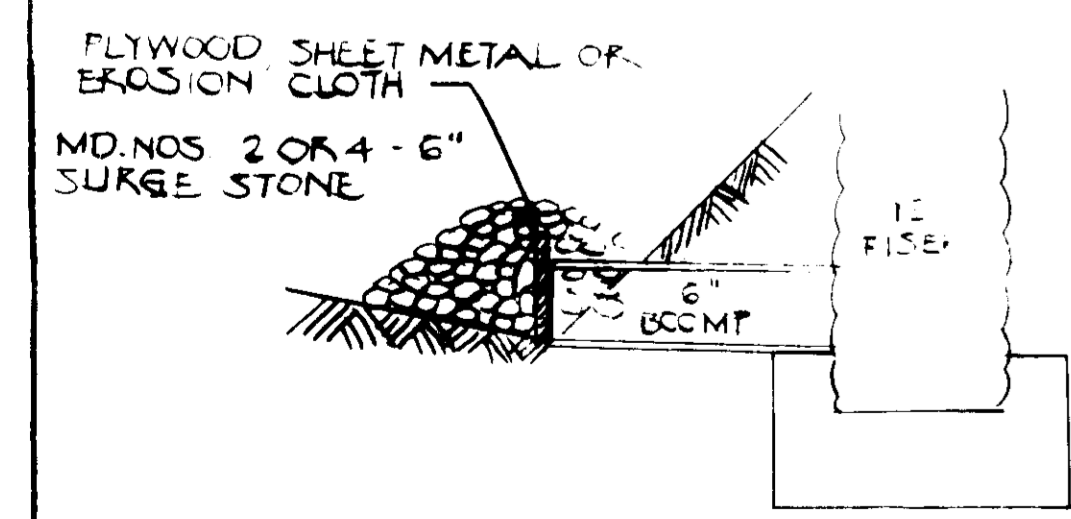
**TEMPORARY SEEDING NOTES**

1. SEED IMMEDIATELY UPON CONSTRUCTION WITH 1 LB RYE GRASS PER 1000 S.F.
2. APPLY 45 LBS/1000 S.F. OF FULVIRIZED DOLOMITE LIMESTONE AND 15 LBS. TO 18.4 LBS/1000 S.F. OF 10X10X10 OR EQUIVALENT FERTILIZER.
3. HARROW OR DISC LIME AND FERTILIZER INTO THE SOIL TO A DEPTH OF AT LEAST 3 IN. CONTINUE TILLAGE UNTIL A REASONABLY UNIFORM FINE FIRM SEED BED HAS BEEN PREPARED. ON SLOPING LAND THE FINAL HARROWING OR DISCING SHOULD BE ON THE CONTOUR.
4. MULCH WITH STRAW @ 75 LBS./1000 S.F.

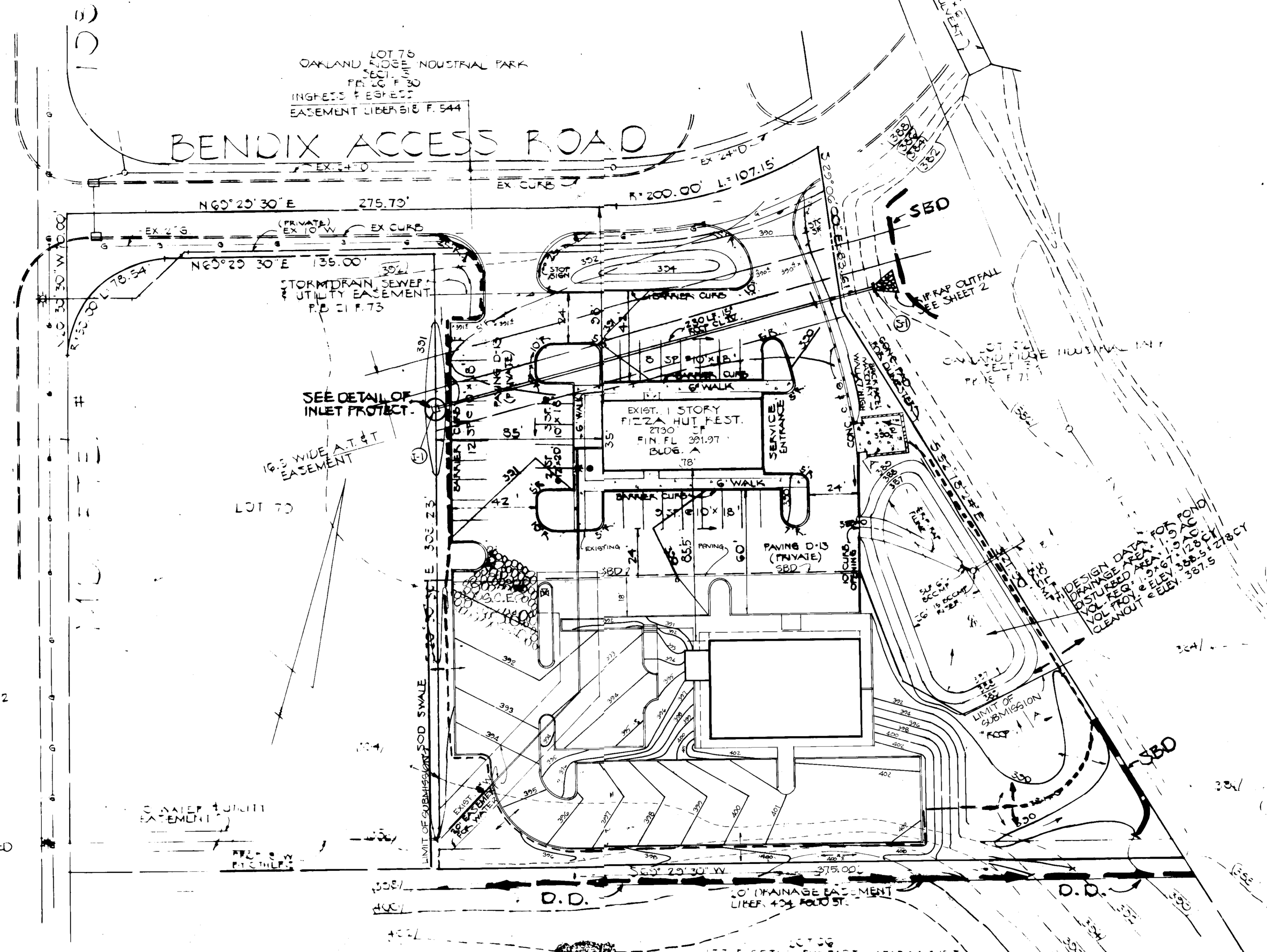


**SEQUENCE OF CONSTRUCTION**

1. OBTAIN GRADING PERMIT.
2. NOTIFY THE HOWARD CO. BUREAU OF INSPECTION & PERMITS
3. INSTALL STABILIZED CONSTRUCTION ENTRANCES
4. CONSTRUCT STORM DRAIN SYSTEM FROM I-1 TO S-1 SEE SHT 1 & 2
5. INSTALL INLET PROTECTION @ I-1 AND EXCAVATE SWALE ALONG WLT PROPERTY LINE.
6. INSTALL STRAWBALE DIKE AND DIVERSION DIKE
7. EXCAVATE POND AND CONSTRUCT OUTFALL PIPE AND RISEK ASSEMBLY. BLOCK OPENING OF 6" BCCMP. (SEE ROUGH GRADE SITE)
8. PROCEED WITH BUILDING AND UTILITY CONSTRUCTION
9. PLACE SURFACE MATERIAL IN AREAS TO BE PAVED
10. PAVE PARKING AREAS AND STABILIZE REMAINING AREAS AS PER PERMANENT SEEDING PROCEDURES.
11. FLUSH STORM DRAIN FROM I-2 TO I-1
12. PUMP WATER FROM POND TO DRAINAGE AREA
13. REMOVE MULCH FROM POND & DISPOSE OF ON A SITE WITH AN APPROVED SEDIMENT CONTROL PLAN.
14. CONSTRUCT FINAL PLUME
15. REMOVE BLOCKING OF 6" BCCMP
16. REMOVE BLOCKING OF 6" BCCMP
17. STABILIZE POND AREA



**LOW FLOW BLOCKING DETAIL**  
NO SCALE



APPROVED FOR PUBLIC WATER & PUBLIC SEWERAGE SYSTEMS  
HOWARD COUNTY HEALTH DEPARTMENT

*Joyce Bryden* 3-3-83  
COUNTY HEALTH OFFICER DATE

THIS DEVELOPMENT PLAN IS APPROVED FOR SOIL EROSION AND SEDIMENT CONTROL BY THE HOWARD SOIL CONSERVATION DISTRICT

*Walter Lee* 2-27-83  
HOWARD S.C.D. DATE

REVIEWED FOR HOWARD COUNTY HEALTH DEPARTMENT AND MEETS TECHNICAL REQUIREMENTS

*Walter Lee* 2-22-83  
US SOIL CONSERVATION SERVICE DATE

APPROVED: HOWARD COUNTY OFFICE OF PLANNING & ZONING

*Walter Lee* 3-7-83  
PLANNING DIRECTOR DATE

CHIEF, DIV. OF LAND DEVELOPMENT & ZONING ADMIN. DATE

APPROVED BY PUBLIC WATER PUBLIC SEWERAGE STORM DRAINAGE & PUBLIC TRUNKS  
HOWARD COUNTY DEPT. OF PUBLIC WORKS

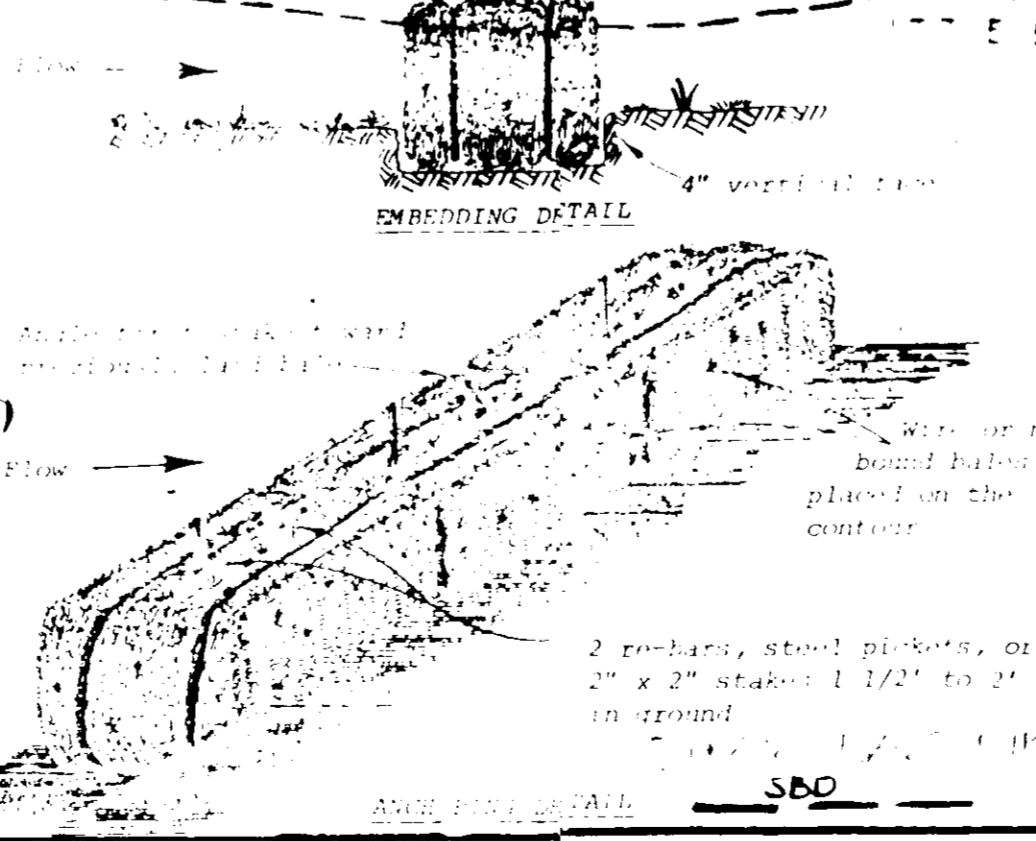
*Walter Lee* 2-25-83  
DIRECTOR DATE

*Walter Lee* 2-25-83  
CHIEF, BUREAU OF ENGINEERING DATE

**ENGINEER'S CERTIFICATE**

I CERTIFY THAT THE PLAN FOR EROSION AND SEDIMENT CONTROL PREPARED BY ME IS A PRACTICAL AND WORKABLE PLAN BASED ON MY PROFESSIONAL KNOWLEDGE OF THE SITE CONDITIONS AND THAT IT WAS PREPARED IN ACCORDANCE WITH THE REQUIREMENTS OF THE HOWARD SOIL CONSERVATION DISTRICT

*Walter Lee* 12-8-1982



**DEVELOPER'S CERTIFICATE**

I HAVE CERTIFIED THAT ALL DEVELOPMENT & CONSTRUCTION WILL BE DONE ACCORDING TO THE PLAN OF DEVELOPMENT & CONSTRUCTION. I WILL MAINTAIN ALL SEDIMENT CONTROL DEVICES THROUGHOUT THE CONSTRUCTION PERIOD. I WILL MAINTAIN ALL SEDIMENT CONTROL DEVICES THROUGHOUT THE CONSTRUCTION PERIOD. I WILL MAINTAIN ALL SEDIMENT CONTROL DEVICES THROUGHOUT THE CONSTRUCTION PERIOD.

*Walter Lee* 12-8-1982

**SEDIMENT CONTROL PLAN**  
LOT 30 SECTION 11 3  
OAKLAND RIDGE INDUST. PARK  
ELECTION DISTRICT 2  
HOWARD CO, MD.  
SCALE 1" = 30'

TAX MAP: 30  
PARCEL: 233  
PLAT BOOK 27  
P. 47

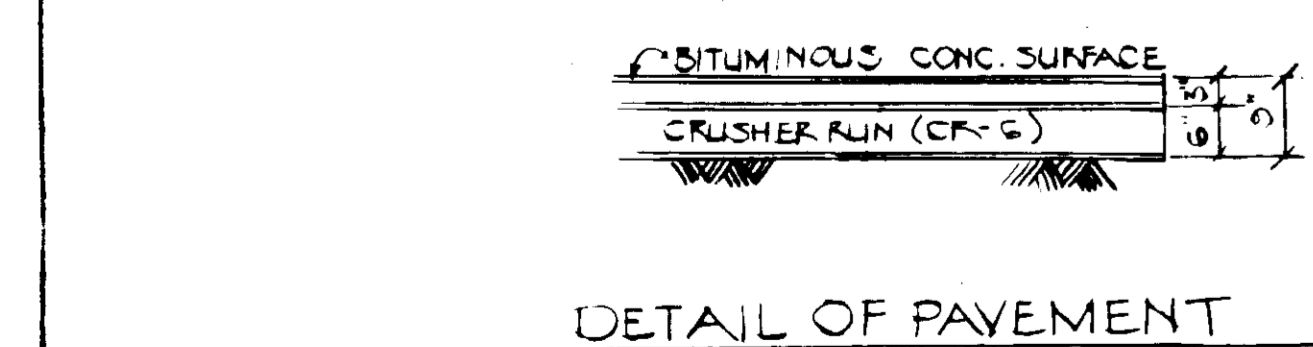
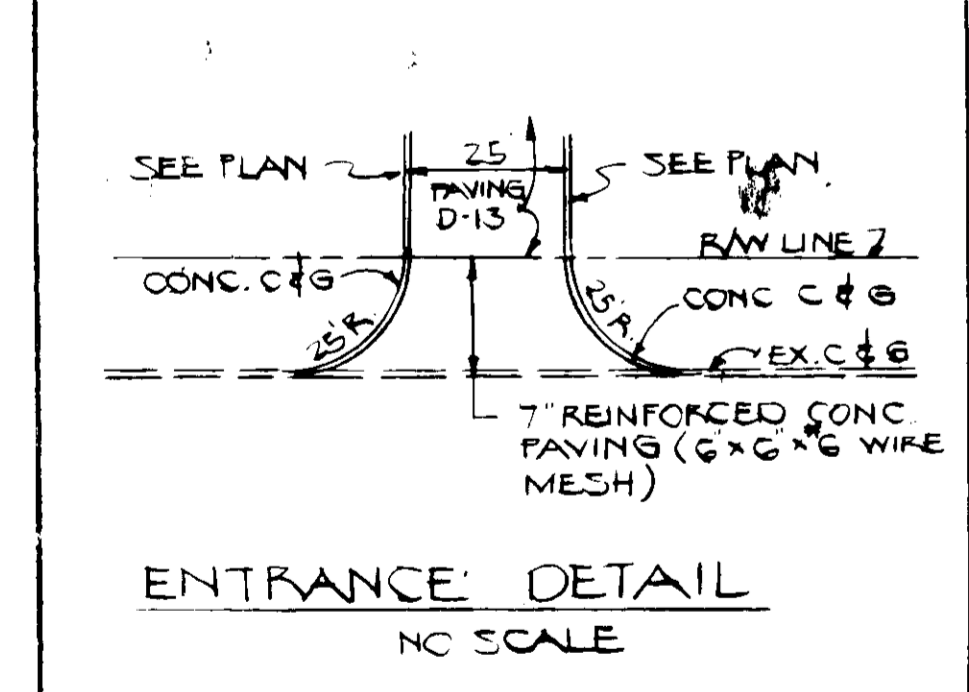
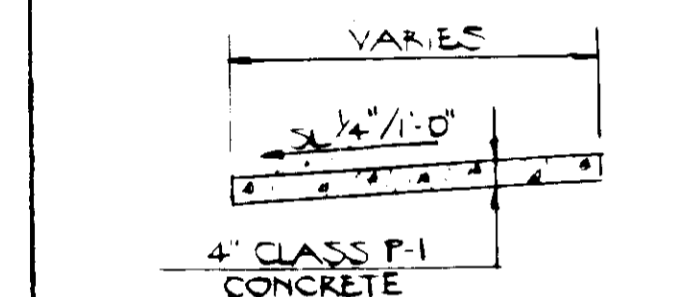
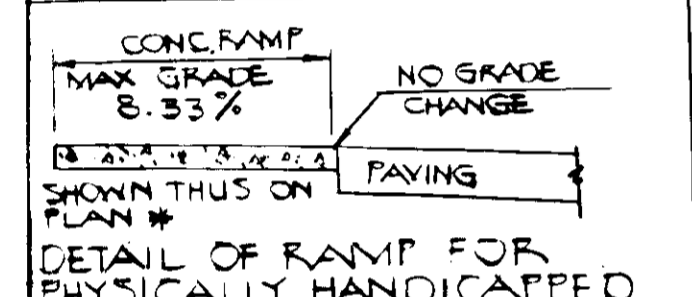
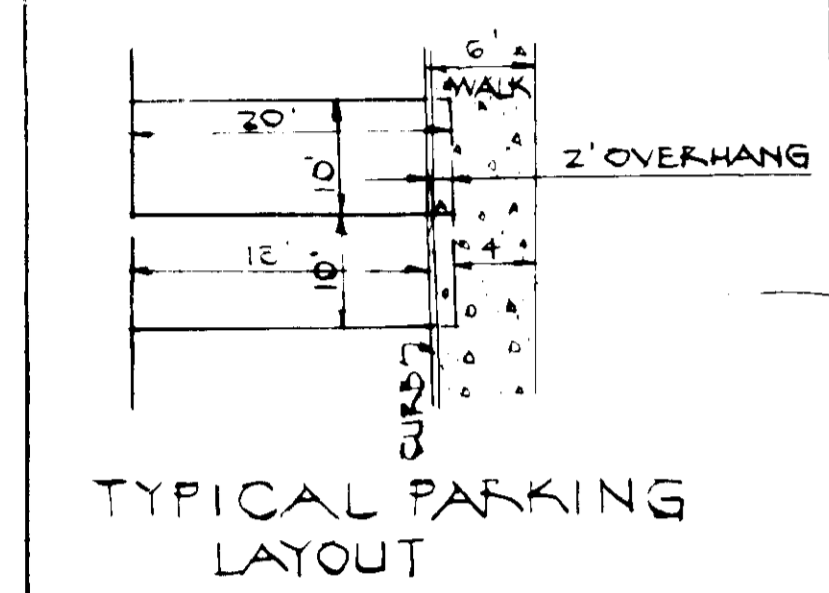
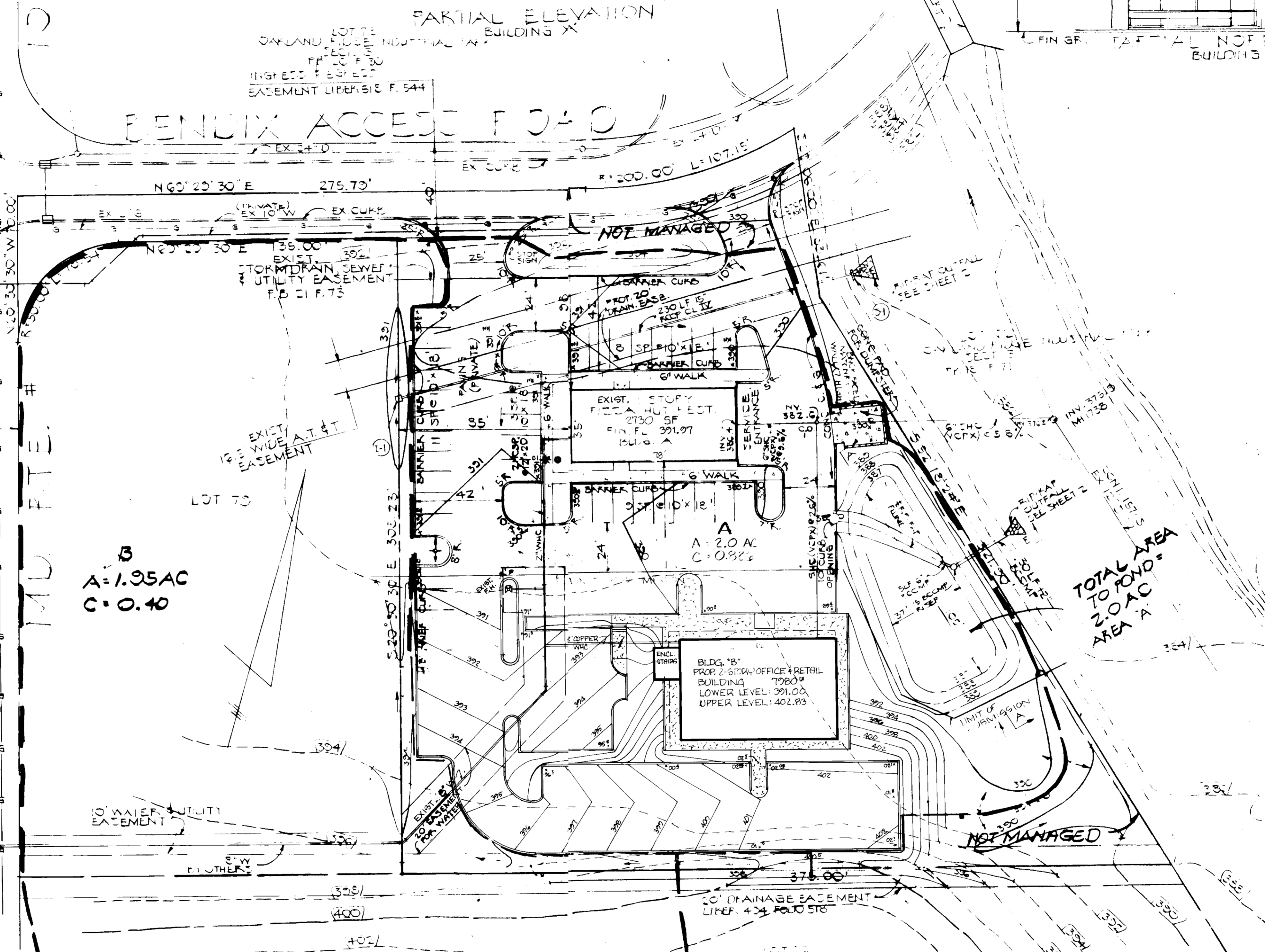
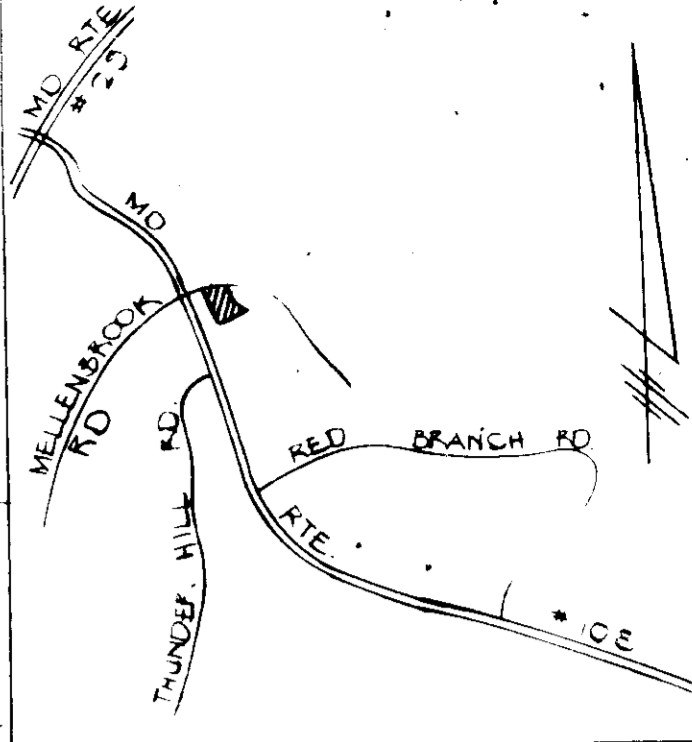
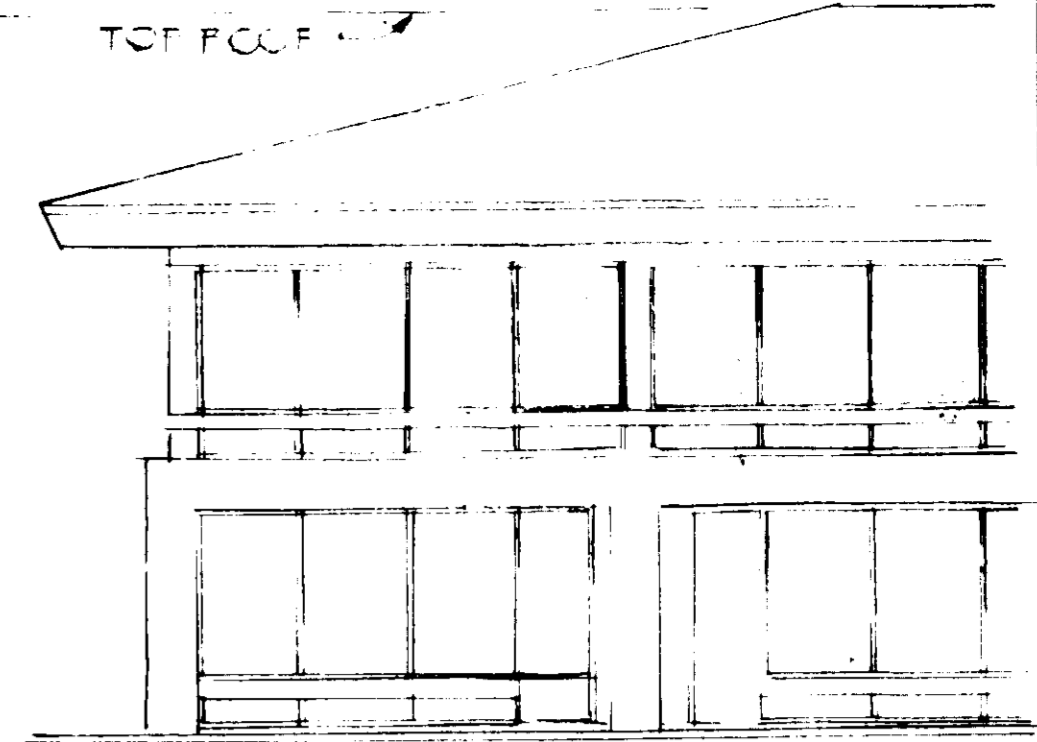
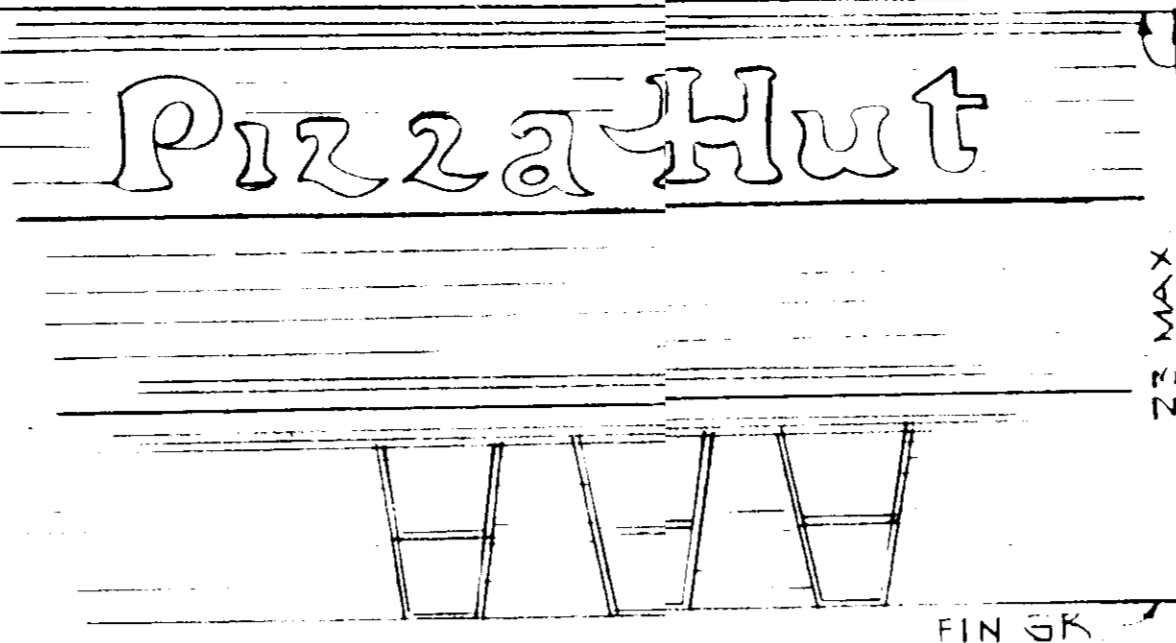
DECEMBER 6, 1982

A REVISION OF PART OF GDP 81-30C

3 OF 5  
SDP-83-78-G-33

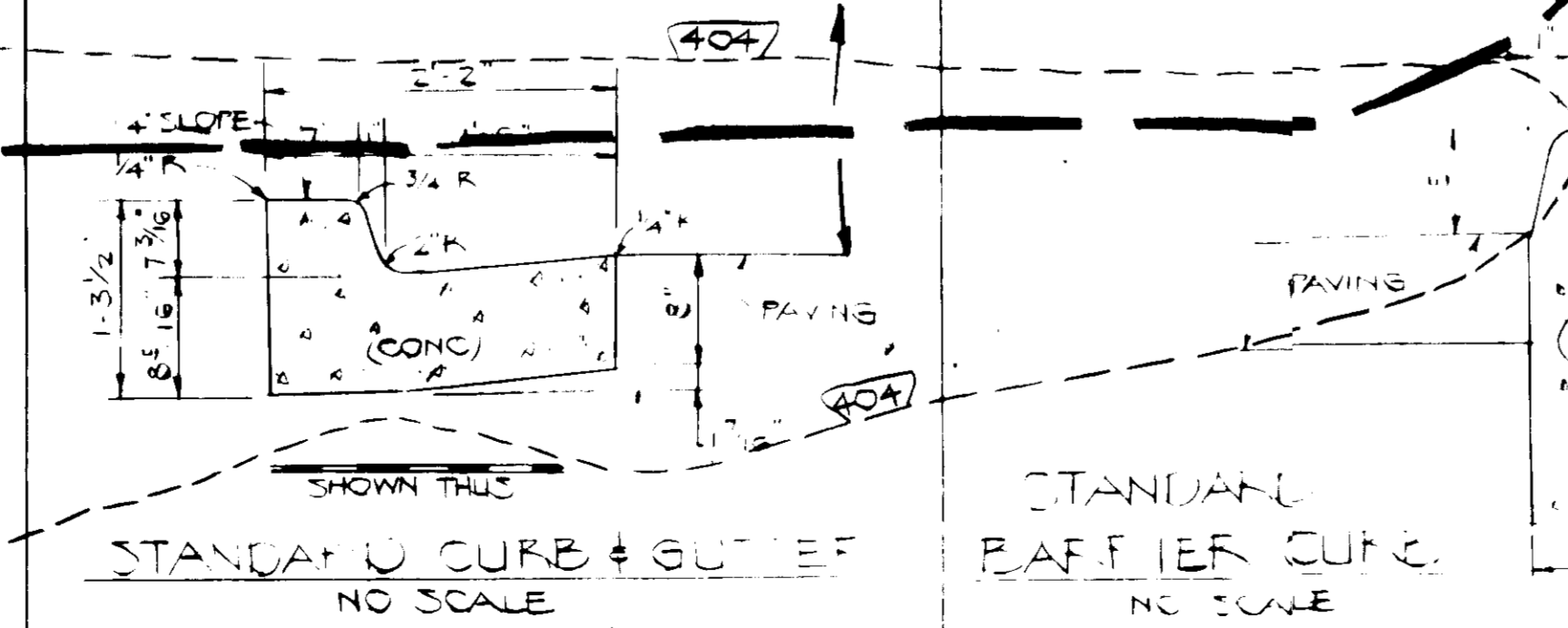


1. 20' AC  
 2. 20' AC  
 3. 20' AC  
 4. 20' AC  
 5. 20' AC  
 6. 20' AC  
 7. 20' AC  
 8. 20' AC  
 9. 20' AC  
 10. 20' AC  
 11. 20' AC  
 12. 20' AC  
 13. 20' AC  
 14. 20' AC  
 15. 20' AC  
 16. 20' AC  
 17. 20' AC  
 18. 20' AC  
 19. 20' AC  
 20. 20' AC



NOTE: BASE COURSE WILL BE FRAMED IN ACCORDANCE WITH HOWARD COUNTY ROAD CONSTRUCTION CODE AND STANDARD SPECS. SEE C-30-3 TACK COAT SHALL BE APPLIED AS REQUIRED BY THE HOWARD CO. ROAD CONSTRUCTION CODE AND STANDARD SPECS C-31-4 ROAD CODE. ALL CONSTRUCTION SHALL BE IN ACCORDANCE WITH THE HOWARD CO. ROAD CONSTRUCTION CODE & STANDARD SPECIFICATIONS.

CLEARING AND GRUBBING	REFER TO ARTICLE C-1
SUBGRADE	REFER TO ARTICLE C-2
BASE COURSE	REFER TO ARTICLE C-31 OR C-33
SURFACE COURSE	REFER TO ARTICLE C-31



OFFICE FOR PUBLIC WATER & PUBLIC SEWERAGE SYSTEMS  
 HOWARD COUNTY HEALTH DEPARTMENT  
 Joseph Boylan  
 COUNTY HEALTH OFFICER No. 2-7-79  
 DATE

THIS DEVELOPMENT PLAN IS APPROVED FOR SOIL EROSION AND SEDIMENT CONTROL BY THE HOWARD SOIL CONSERVATION DISTRICT  
 Howard S. C. D.  
 DATE 2-22-83

REVIEWED FOR HOWARD COUNTY DEPT. OF PUBLIC WORKS AND METS TECHNICAL REQUIREMENTS  
 Joseph M. Veda  
 U.S. SOIL CONSERVATION SERVICE  
 DATE 2-22-83

APPROVED: HOWARD COUNTY OFFICE OF PLANNING & ZONING  
 Planning Director  
 DATE 2-27-83

CHIEF, DIV. OF LAND DEVELOPMENT & ZONING ADMIN. DATE

APPROVED FOR PUBLIC WATER, PUBLIC SEWERAGE STORM DRAINAGE & PUBLIC ROADS  
 HOWARD COUNTY DEPT. OF PUBLIC WORKS  
 Director  
 DATE 2-22-83

CHIEF, BUREAU OF ENGINEERING DATE

ENGINEER'S CERTIFICATE  
 I CERTIFY THAT THE PLAN FOR EROSION AND SEDIMENT CONTROL REPRESENTS A PRACTICAL AND WORKABLE PLAN BASED ON MY PROFESSIONAL KNOWLEDGE OF THE SITE CONDITIONS AND THAT IT WAS PREPARED IN ACCORDANCE WITH THE REQUIREMENTS OF THE HOWARD SOIL CONSERVATION DISTRICT  
 Walter Pan 1/15/83

DEVELOPER  
 PIZZA HUT OF MARYLAND, INC  
 400 GORMAN PLAZA BLDG.  
 COLUMBIA, MD.

ENGINEER  
 HUDKINS ASSOCIATES, INC.  
 231 JOSEPH SQUARE  
 COLUMBIA, MD. 21044

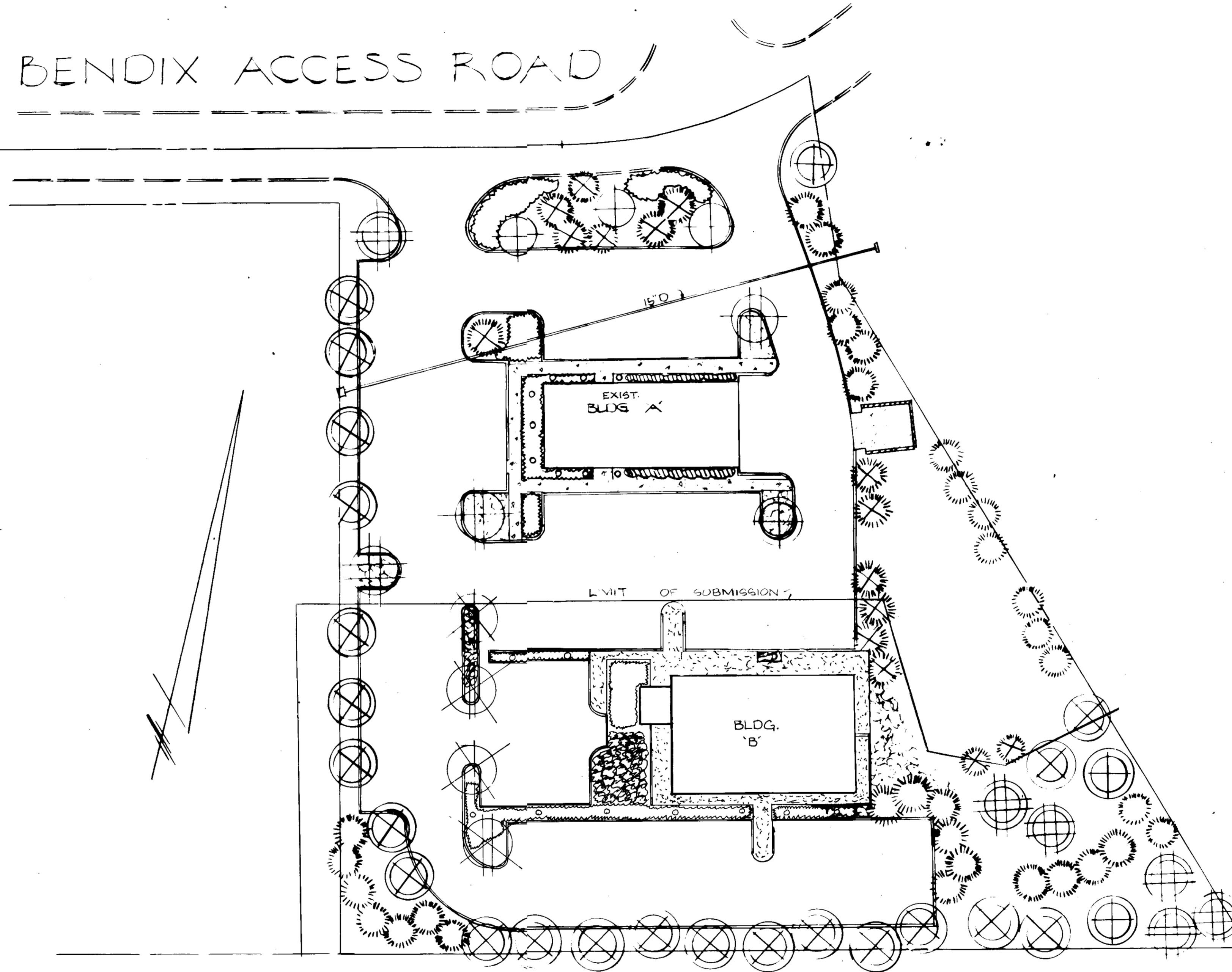
REVISED  
 DRAINAGE AREA MAP  
 LOT 30 SECTION 13  
 OAKLAND FRIDGE INDUST. PARK  
 ELECTION DISTRICT 2  
 HOWARD CO., MD.  
 SCALE 1"=30'  
 DECEMBER 6, 1982

TAX MAP: 30  
 PARCEL: 203  
 PLAN BOOK 27 P. 47

PLANTING SCHEDULE

⊕	PIRUS CALLERYANA 'BRADFORD' BRADFORD PEAR	2-2 1/2" CAL 8-10' HT.	B. & B. HEAVY	4
⊕	PRUNUS SERRULATA 'KWANZAN' KWANZAN CHERRY	"	"	3
⊕	CRATAEGUS OXYACANTHA 'PAULIS' PAULIS SCARLET HAWTHORN	"	"	2
⊗	CORNUS KOLUSA KOLUSA DOGWOOD	"	"	1
⊗	CORNUS FLORIDA FLOWERING DOGWOOD	"	"	1
⊗	ACEK SACCHARUM SUGAR MAPLE	2 1/2" CAL 12-14' HT.	"	22
⊕	TILIA CORDATA LITTLELEAF LINDEN	"	"	5
⊕	PINUS STROBUS WHITE PINE	2-2 1/2" CAL 7-8' HT.	"	32
⊗	PINUS NIGRA V. NIGRA AUSTRIAN PINE	2-2 1/2" CAL 6-7' HT.	"	15
⊕	JUNIPERUS SPECIES LOW SPREADING	18"-24"	"	
⊕	EVERGREEN HEDGE	18"-24"	"	
⊕	UPRIGHT EVERGREEN SHRUBS	3'-4'	"	18
⊕	HEDERA HELIX ENGLISH IVY	WELL ROOTED CLIPPINGS	"	

BENDIX ACCESS ROAD



APPROVED FOR PUBLIC WATER, PUBLIC SEWERAGE, STORM DRAINAGE SYSTEMS  
HOWARD COUNTY HEALTH DEPARTMENT  
*James W. Corbett* 2-3-83  
COUNTY HEALTH DEPT. OFFICER P.S. DATE

THIS DEVELOPMENT PLAN IS APPROVED FOR SOIL EROSION AND SEDIMENT CONTROL BY THE HOWARD SOIL CONSERVATION DISTRICT.  
*James W. Corbett* 2-3-83  
HOWARD S.C.D. DATE

REVIEWED FOR HOWARD S.C.D. AND MEETS TECHNICAL REQUIREMENTS

U.S. SOIL CONSERVATION SERVICE DATE

APPROVED HOWARD COUNTY OFFICE OF PLANNING & ZONING  
*James W. Corbett* DATE  
PLANNING DIRECTOR

CHIEF, DIV. OF LAND DEVELOPMENT & ZONING ADMIN. DATE

APPROVED FOR PUBLIC WATER, PUBLIC SEWERAGE, STORM DRAINAGE & PUBLIC ROADS  
HOWARD COUNTY DEPT. OF PUBLIC WORKS  
*James W. Corbett* DATE  
DIRECTOR

*James W. Corbett* 2-3-83  
CHIEF, BUREAU OF ENGINEERING DATE

DEVELOPER  
PIZZA HUT OF MARYLAND, INC.  
200 SOFMAN PLAZA BLDG.  
COLUMBIA, M.D.

ENGINEER  
HUDKINS ASSOCIATES, INC.  
200 E. JOFFA ROAD  
TOWSON, MD. 21204

ENGINEER'S CERTIFICATE  
I CERTIFY THAT THE PLAN FOR EROSION AND SEDIMENT CONTROL REPRESENTS A PRACTICAL AND WORKABLE PLAN BASED ON MY PROFESSIONAL KNOWLEDGE OF THE SITE CONDITIONS, AND THAT IT WAS PREPARED IN ACCORDANCE WITH THE REQUIREMENTS OF THE HOWARD SOIL CONSERVATION DISTRICT.  
*Walter J. ...*

DEVELOPER'S CERTIFICATE  
I/WE CERTIFY THAT ALL DEVELOPMENT & CONSTRUCTION WILL BE DONE ACCORDING TO THIS PLAN OF DEVELOPMENT, PLAN FOR EROSION SEDIMENT CONTROL & THAT ALL RESPONSIBLE PERSONNEL INVOLVED IN THE CONSTRUCTION PROJECT WILL HAVE CERTIFICATE OF ATTENDANCE AT A DEPARTMENT OF NATURAL RESOURCES APPROVED TRAINING PROGRAM FOR THE CONTROL OF SEDIMENT & EROSION BEFORE BEGINNING THE PROJECT. I ALSO AUTHORIZE PERIODIC ON-SITE INSPECTION BY THE HOWARD SOIL CONSERVATION DISTRICT OR THEIR AUTHORIZED AGENTS AS ARE DEEMED NECESSARY.  
*John F. ...*

1-26-83

LANDSCAPE PLAN  
LOT 80 SECTION 3  
OAKLAND RIDGE INDUST. PARK  
ELECTION DISTRICT 2  
HOWARD CO, MD.  
SCALE 1" = 30'  
DECEMBER 6, 1982