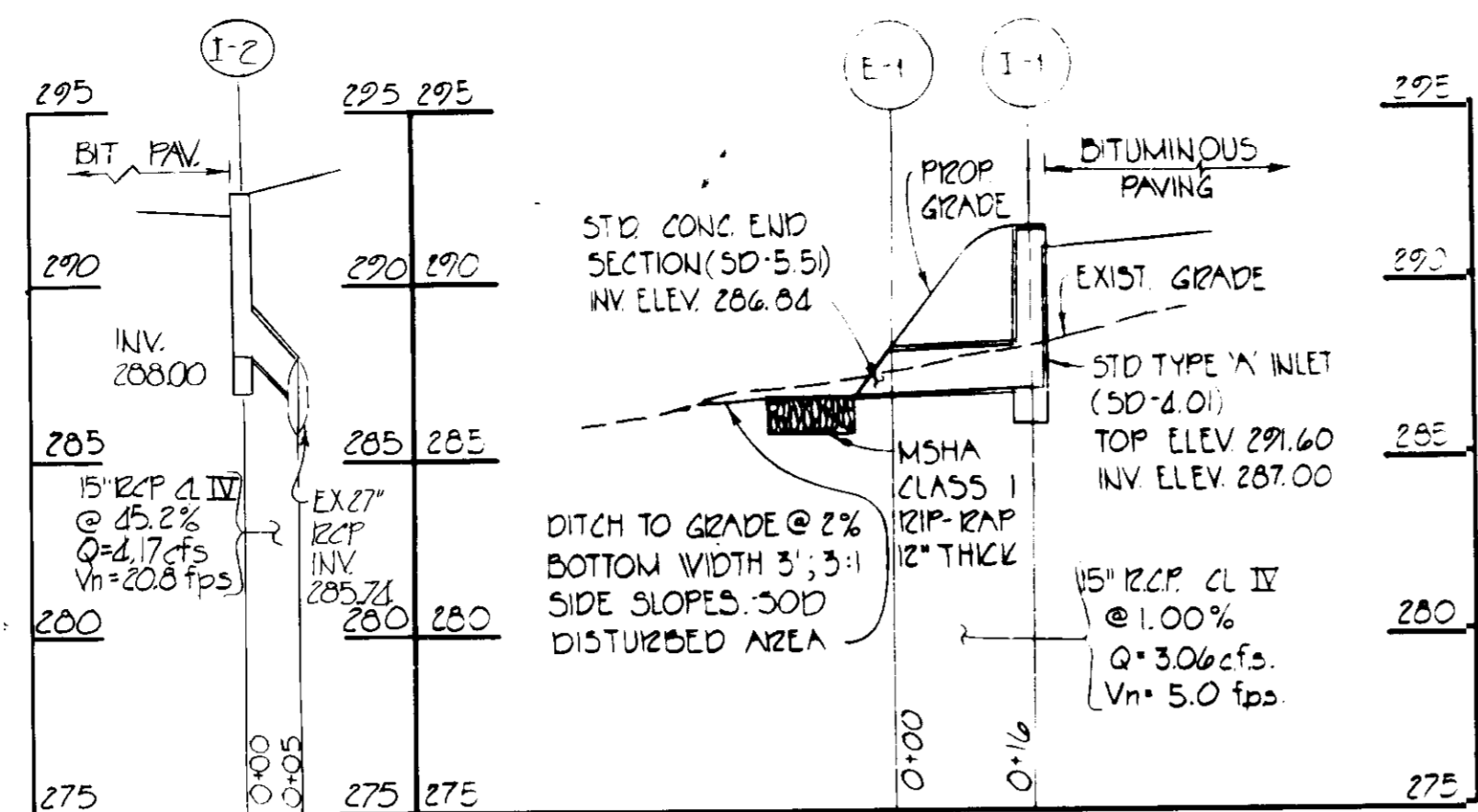
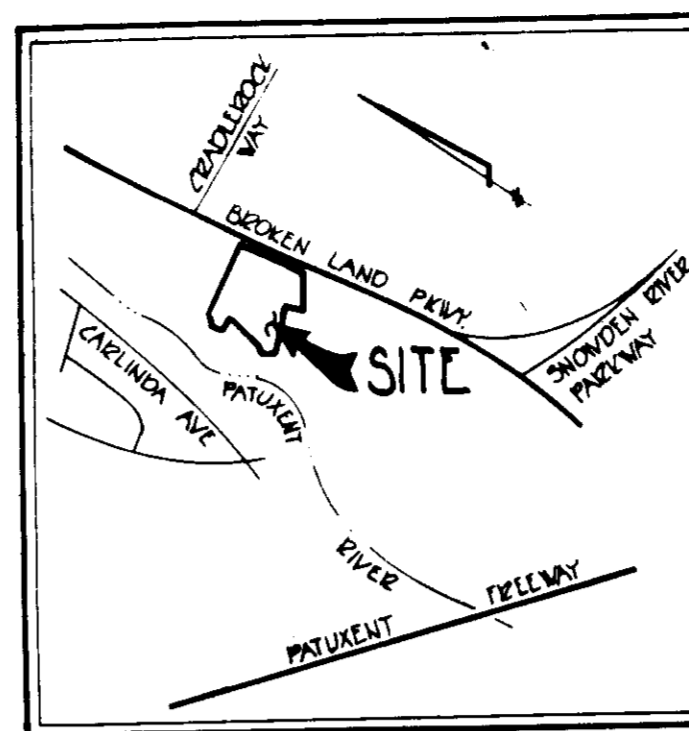


GENERAL NOTES

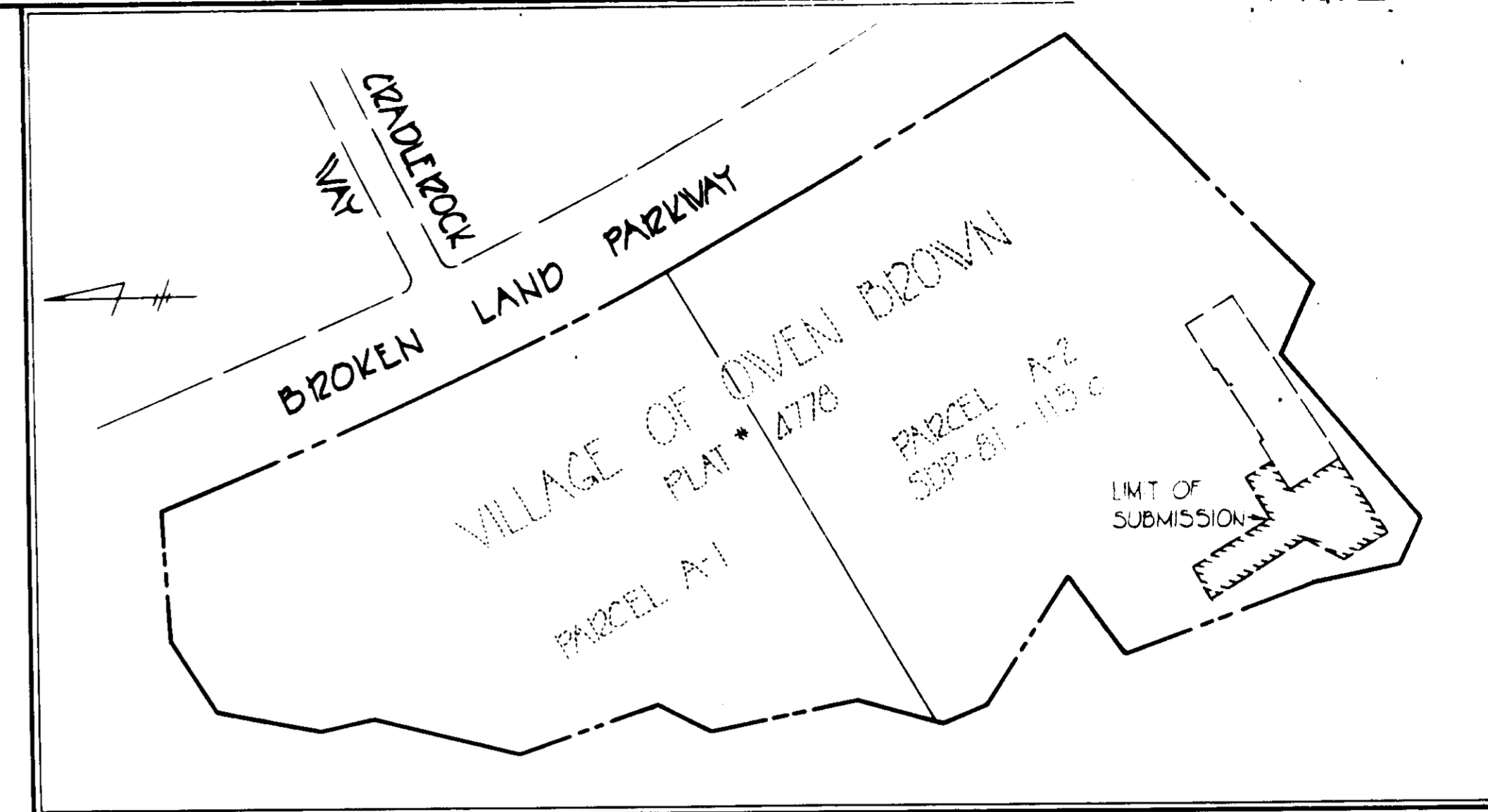
- All work and materials shall be in accordance with the Howard County Design Manual, Volume IV, Standard Specifications and Details for Construction. Standard Details Numbers shown on the drawing are referenced to the Howard County Design Manual, Volume IV except traffic control devices.
- All traffic control devices shall be in accordance with the Maryland Manual of Uniform Traffic Control Devices for message content and materials.
- The locations of existing utilities shown on the drawing are based on the latest available information. The Contractor shall however determine the exact locations and shall notify "MISS UTILITY" at least three days prior to beginning any work.
- Current Zoning - NT (Employment Center Commercial) F.D.P. Phase 125.
- Existing improvements subject to SDP-81-115c.
- Proposed use - Drive-in banking facility.
- Area of submission 0.52 Ac.; Total Area of Parcel 10,955 Ac.
- Parking data:  
Required spaces (SDP-81-115c) 439  
Existing spaces 756  
Spaces to be eliminated 21  
Existing spaces to remain 735
- Handicapped facilities provided under SCP-81-115c.
- See canopy construction drawings for details of concrete islands and drive-in banking units.
- Proposed bituminous paving shall be Howard County Standard Paving Section P-1.



STORM DRAIN PROFILE  
SCALE: HORIZ 1"=20'  
VERT 1"=5'



VICINITY MAP  
SCALE: 1"=2000'



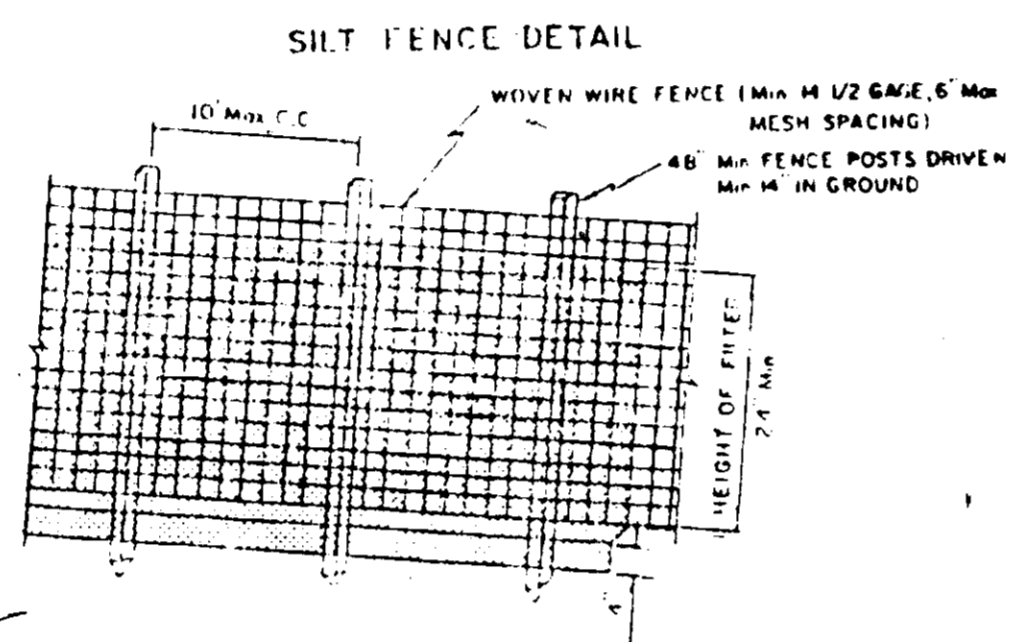
LOCATION PLAN  
SCALE: 1"=200'

CONSTRUCTION SEQUENCE

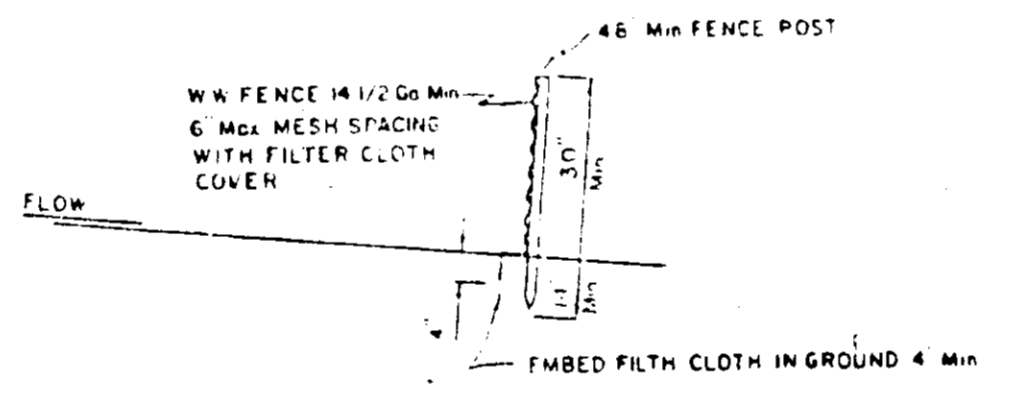
- Obtain grading permit
- Install silt fence
- Grade site; install storm drain; block inlet
- Install curbs and concrete islands for drive-in units; install underground services to drive-in units.
- Pave site; remove inlet blocking
- Stabilize all disturbed areas in accordance with the Sediment Control Notes
- Complete canopy construction. Remove sediment control devices when all areas have been stabilized.

SEDIMENT CONTROL NOTES

- Specifications for the Sediment Control Details shown hereon are included in the U.S.D.A. Soil Conservation Service "Standards and Specifications for Soil Erosion and Sediment Control in Developing Areas."
- The developer shall notify the Howard County Office of Inspection and Permits at least 24 hours prior to beginning any construction shown hereon (992-2435 or 992-2436).
- All sediment control structures to remain in place until permission for their removal has been obtained from the Howard County Office of Inspection and Permits (992-2435 or 992-2436).
- All graded areas shall be stabilized in accordance with the following requirements:
  - Site Preparation:
    - Narrow or disc the areas to be seeded with the following materials at the specified rate to a depth of 3":
      - Pulverized limestone at 14 tons/acre.
      - Commercial fertilizer 10-10-10 at 3/4 tons/acre.
      - Super phosphate at 600 lbs./acre.
    - Seeding:
      - Sow the following seed mixture at the specified rate with a mechanical sower:
        - Temporary - Italian or Perennial Ryegrass (1 lb./1000 sq. ft.)
        - Permanent - (Slopes flatter than 3:1) - Common Kentucky Bluegrass 40%, Menon Bluegrass 40%, Red Fescue 20% (1 lb./1000 sq. ft.) (Slopes steeper than 3:1) - Ground Cover
      - The seeded area shall be raked with a York Rake (minimum of 2 passes), covered and compacted with a cultipacker or other approved method.
    - Mulching:
      - Seeded areas shall be uniformly mulched immediately after seeding with unweathered small grain straw at the rate of 1 1/2 to 2 tons/acre.
      - Tie mulch down with liquid asphalt at 0.1 gal./s.y. or emulsified asphalt at 0.04 gal./s.y.
    - Sodding:
      - Apply 10-10-10 fertilizer at 1000 lbs./acre. (25 lbs./1000 s.f.)
      - Apply ground agricultural limestone at 2000 lbs./acre. (50 lbs./1000 s.f.)
      - Incorporate both lime and fertilizer into soil by discing. Firm up after incorporation.
      - Lay sod to a tight fit. Roll to insure contact with underlying soil. Water as necessary for first two weeks (in summer) to ensure establishment.
  - Ground cover:
    - Crown vetch (innoculated) at 15 lbs./acre, and Kentucky 31 Tall Fescue (certified) at 40 lbs./acre. (2:1 maximum slope)
- The contractor shall place plywood braced with sand bags at the inlet end of unfinished drain pipes at the end of each work day.
- All stockpiles shall be protected with straw bale dikes, silt fences, or other approved sediment control devices.

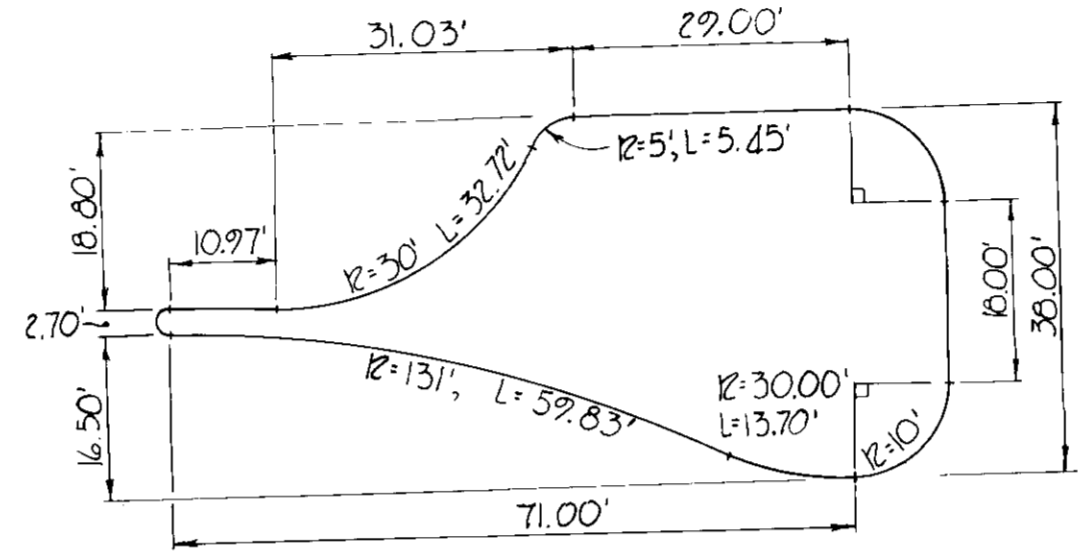


PERSPECTIVE VIEW



SECTION

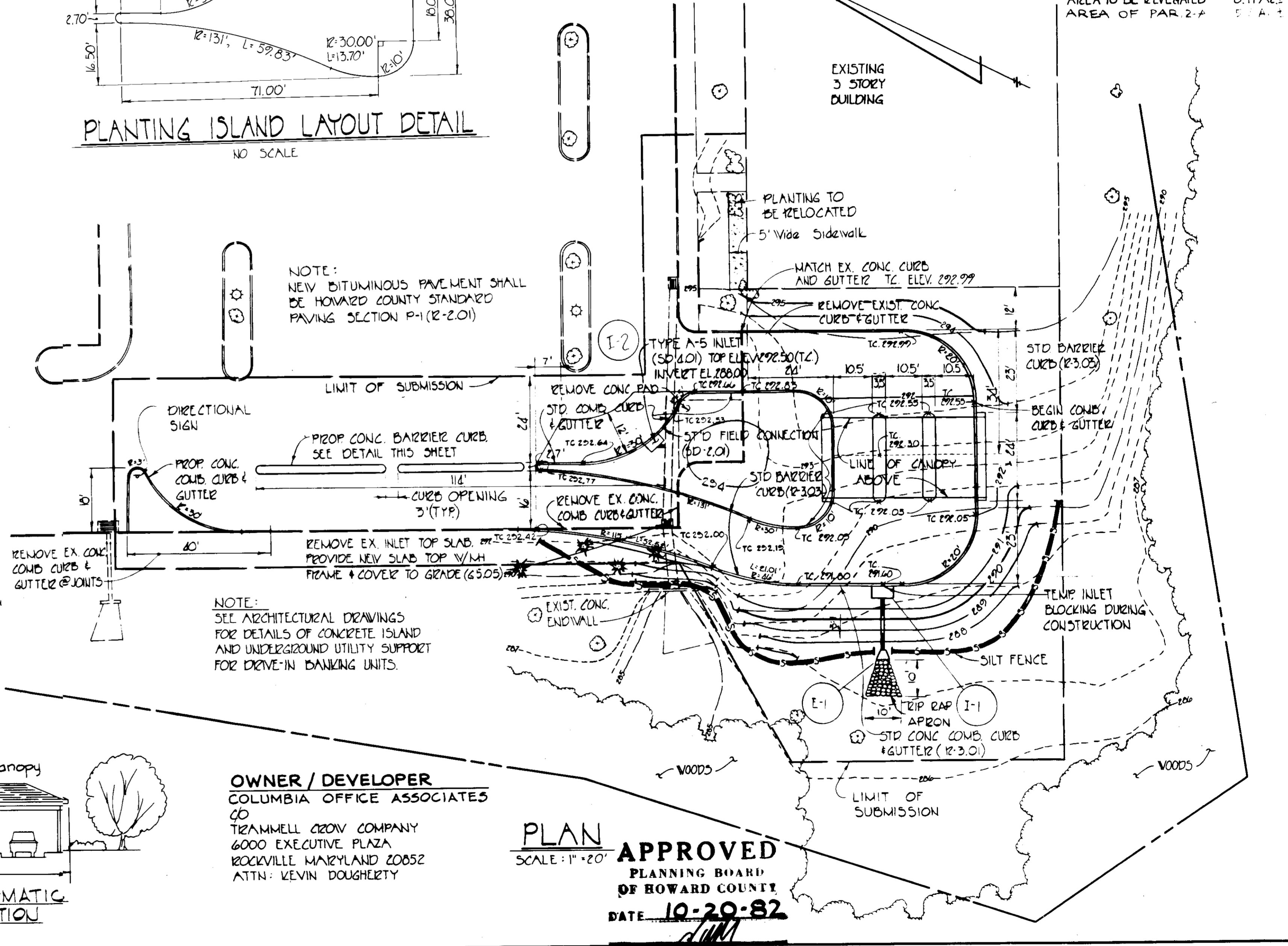
- CONSTRUCTION NOTES:
- WOVEN WIRE FENCE TO BE FASTENED SECURELY TO FENCE POSTS WITH WIRE TIES OR STAPLES
  - FILTER CLOTH TO BE FASTENED SECURELY TO WOVEN WIRE FENCE WITH WIRE TIES SPACED EVERY 24" AT TOP AND MID SECTION
- POSTS: STEEL EITHER 1" x 4" TYPE OR 2" HARDWOOD  
FENCE: WOVEN WIRE, 1/4" x 6" MAX. 6" MESH OPENING  
FILTER CLOTH: FILTER X MIRRI 1000  
LAUREL EROSION CONTROL CLOTH BIRDM  
POLY. FILTER X OR EQUAL



PLANTING ISLAND LAYOUT DETAIL  
NO SCALE

SITE ANALYSIS

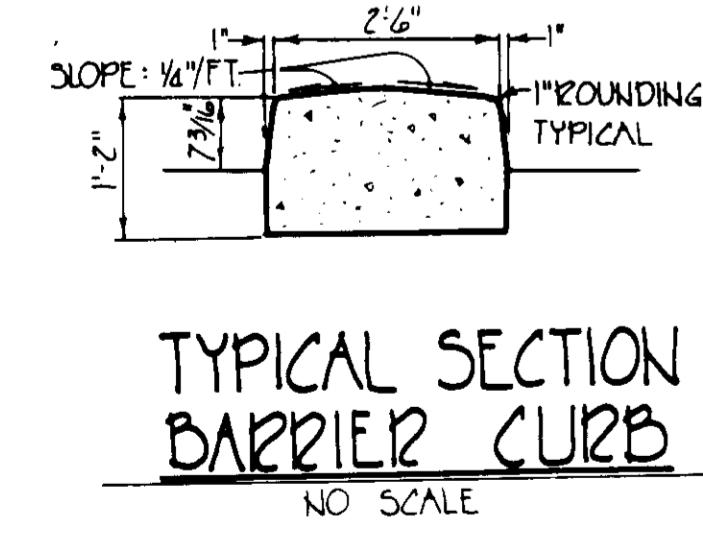
|                        |          |
|------------------------|----------|
| TOTAL DISTURBED AREA   | 0.28 Ac. |
| AREA TO BE PAVED       | 0.17 Ac. |
| AREA TO BE REVEGETATED | 0.11 Ac. |
| AREA OF PAR. 2-A       | 5.1 A.   |



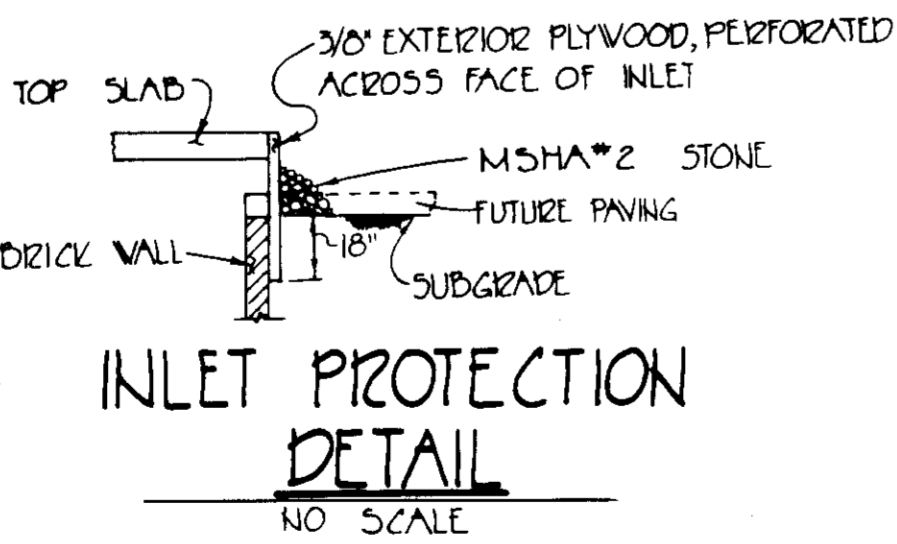
OWNER / DEVELOPER  
COLUMBIA OFFICE ASSOCIATES  
CO  
TRAMWELL CROW COMPANY  
6000 EXECUTIVE PLAZA  
ROCKVILLE, MARYLAND 20852  
ATTN: KEVIN DOUGHERTY

PLAN  
SCALE: 1"=20'  
APPROVED  
PLANNING BOARD  
OF HOWARD COUNTY  
DATE: 10-20-82

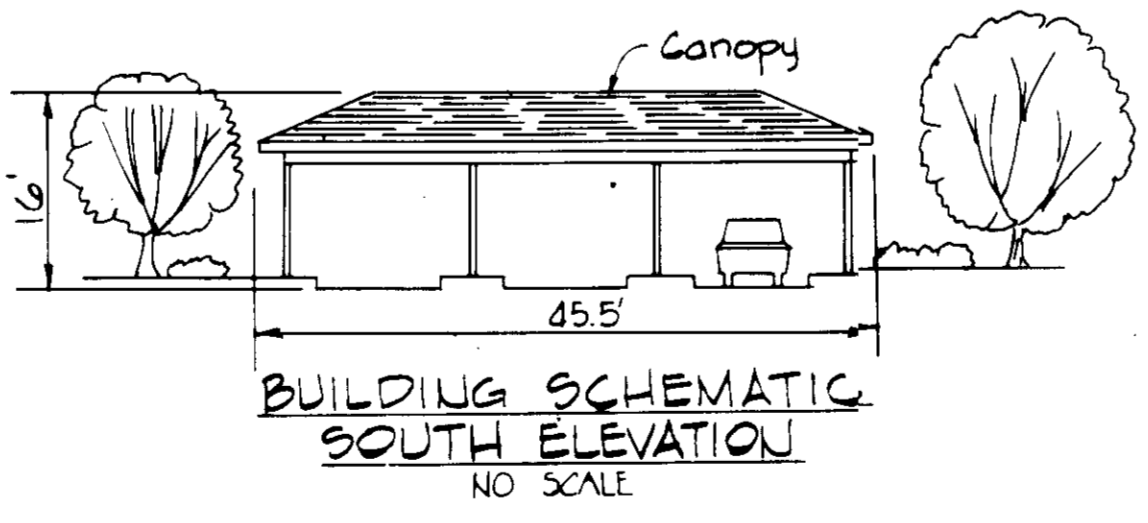
PROVIDE EXPANSION JOINTS AND SAVED CONTRACTION JOINTS AS REQ'D FOR CONCRETE COMBINATION CURBS & GUTTER



TYPICAL SECTION BARRIER CURB  
NO SCALE



INLET PROTECTION DETAIL  
NO SCALE



BUILDING SCHEMATIC SOUTH ELEVATION  
NO SCALE

BRUNING A/E 11/82

**PURDUM & JESCHKE**  
CONSULTING ENGINEERS  
LAND SURVEYORS  
1023 North Calvert Street  
Baltimore, Maryland 21202 301/837-0194

APPROVED FOR PUBLIC WATER, PUBLIC SEWERAGE, STORM DRAINAGE AND ROADS HOWARD COUNTY DEPARTMENT OF PUBLIC WORKS.  
DATE: 1-6-83

APPROVED HOWARD COUNTY OFFICE OF PLANNING AND ZONING.  
DATE: 1-9-83

APPROVED FOR PUBLIC WATER AND PUBLIC SEWERAGE SYSTEMS HOWARD COUNTY HEALTH DEPARTMENT.  
DATE: 1-9-83

HOWARD SOIL CONSERVATION DISTRICT REVIEWED FOR HOWARD CONSERVATION DISTRICT & MEETS TECHNICAL REQUIREMENTS.  
DATE: 12-2-82

DEVELOPER'S CERTIFICATION  
THIS IS TO CERTIFY THAT ALL DEVELOPMENT AND/OR CONSTRUCTION WILL BE DONE ACCORDING TO THIS PLAN OF DEVELOPMENT AND PLAN FOR EROSION AND SEDIMENT CONTROL AND TO AUTHORIZED PERIODIC ON-SITE INSPECTION BY THE HOWARD SOIL CONSERVATION DISTRICT OR THEIR AUTHORIZED AGENTS AS DEEMED NECESSARY. PENALTY FROM THIS PLAN WILL NOT BE MADE UNLESS AUTHORIZED BY THE HOWARD SOIL CONSERVATION DISTRICT.  
DATE: 11-2-82

ENGINEER'S CERTIFICATION  
I CERTIFY THAT THIS PLAN FOR EROSION AND SEDIMENT CONTROL REPRESENTS A PRACTICAL AND WORKABLE PLAN BASED ON MY PERSONAL KNOWLEDGE OF THE SITE CONDITIONS AND THAT IT WAS PREPARED IN ACCORDANCE WITH THE REQUIREMENTS OF THE HOWARD SOIL CONSERVATION DISTRICT.  
DATE: 9/3/82

APPROVED  
PLANNING BOARD  
OF HOWARD COUNTY  
DATE: 10-20-82

ADDITION TO APPROVED SITE DEVELOPMENT PLAN  
SDP-81-115C  
PARCEL 2-A  
VILLAGE OF OWEN BROWN  
SECTION 3 AREA 1  
HOWARD COUNTY, MARYLAND  
6TH ELECTION DISTRICT  
TAX MAP 42 PARCEL 302 PLAT #4778  
JULY 30, 1982 SCALE AS SHOWN

SDP-83-23