

- a. FLOOR SAFE
- b. STOOL
- c. TRANSACTION DESKS
- d. INSTALL SWINGING GLASS DOOR
- e. INSTALL BRICK SILL, STORE FRONT WINDOWS REMOVE GYPSUM BOARD FROM UPPER CAP
- f. REMOVE BRICK SILL
- g. REMOVE NONBEARING COLUMN TO TIE IN STORE FRONT WINDOWS
- h. INSTALL DROP CEILING & QUARRY TILE FLOOR TO MATCH SALESROOM
- i. RELAMP

ST. JOHN'S PLAZA
PARCEL B-1-C-1
P.B. 54 P. 87

LOCATION OF UNDERGROUND PIPING TAKEN FROM AVAILABLE RECORDS. CONTRACTOR SHALL LOCATE ALL PIPING TO HIS SATISFACTION PRIOR TO BEGINNING WORK.

REMOVE EX. BIT. PAVING AS NECESSARY AND EXTEND 6" REINFORCED CONCRETE MAT AS SHOWN.

APPROVED FOR PUBLIC WATER AND PUBLIC SEWERAGE SYSTEMS HOWARD COUNTY HEALTH DEPARTMENT.

James M. Zylman 2-11-82
COUNTY HEALTH OFFICER DATE

APPROVED HOWARD COUNTY OFFICE OF PLANNING AND ZONING.

J.P. Amist 2-16-82
PLANNING DIRECTOR DATE

William W. Hannon 2-16-82
CHIEF DIVISION OF LAND DEVELOPMENT AND ZONING ADMINISTRATION DATE

APPROVED FOR PUBLIC WATER AND PUBLIC SEWERAGE SYSTEMS AND PUBLIC ROADS HOWARD COUNTY DEPARTMENT OF PUBLIC WORKS.

James M. Schaefer 2-10-82
DIRECTOR DATE

Kenneth B. Reay 2-10-82
CHIEF BUREAU OF ENGINEERING DATE

THIS DRAWING IS THE PROPERTY OF MOBIL OIL CORPORATION. IT CONTAINS INFORMATION REGARDED AS CONFIDENTIAL BY MOBIL OIL. THE DRAWING AND THE INFORMATION THEREON IS NOT TO BE USED OR DISCLOSED TO OTHERS EXCEPT WITH WRITTEN MOBIL OIL AUTHORIZATION. THIS DRAWING IS NOT TO BE REPRODUCED OR COPIED WITHOUT PERMISSION AND IS TO BE RETURNED TO MOBIL OIL WITH ANY COPIES PARTIAL OR COMPLETE ON DEMAND.

OWNER
CARL & CHARLOTTE MYERS
P.O. BOX 552
ELICOTT CITY, MD. 21043

APPLICANT
MOBIL OIL CORPORATION
10315 BALLSFORD RD.
MANASSAS, VA
PHONE: (703) 631-9253

U.S. ROUTE 40
(PUBLIC ROAD)
150' R/W
PLAN
SCALE 1"=10'



Macris, Hendricks and Witmer P.A.
Engineers-Surveyors
Suite 206
15209 Frederick Road
Rockville, MD. 20850
(301) 340-8705

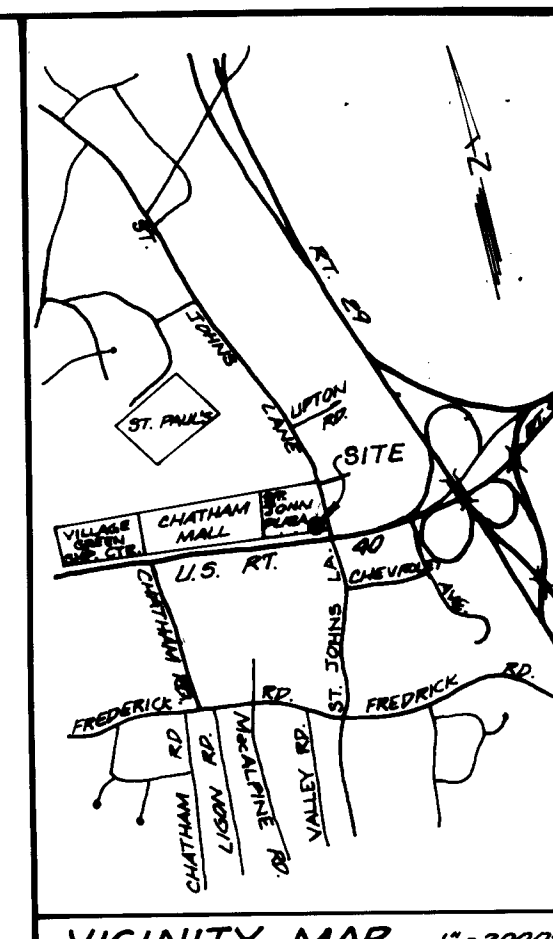
NO	REVISIONS	DATE	BY	CHKD.	MF

ST. JOHN'S PLAZA
PARCEL A-1
PLAT REF. 5114
2ND ELECTION DISTRICT
HOWARD COUNTY, MARYLAND

Mobil Oil Corporation
NORTH AMERICAN DIVISION
EASTERN REGION
VALLEY FORGE, PA 19482

FULL SERVICE-SELF SERVICE CONVERSION
U.S. ROUTE 40 & ST. JOHN'S LANE
ELICOTT CITY, MARYLAND

DRAWN *BETTY* DRAWING NUMBER 16-476
CHECKED *J.C.G.* SHEET NUMBER 1 OF 1
SCALE 1"=10'
DATE 9-81

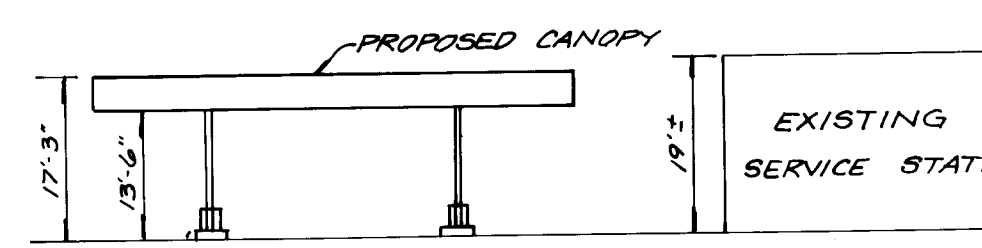


SITE ANALYSIS
SITE AREA: 0.535 AC.
ZONING: COMMERCIAL B-2
TAX MAP NO. 24
EXISTING BUILDING COVERAGE: 1996 SQ. FT.
PROPOSED BUILDING COVERAGE: 1500 SQ. FT.
TOTAL COVERAGE: 3496 SQ. FT.
SALES AREA: 165 SQ. FT.
CANOPY ADDITION TO SDP 70-75
THERE WILL BE NO REDUCTION IN THE NUMBER OF SERVICE BAYS AS A RESULT OF THIS PLAN.

PARKING SCHEDULE
PARKING REQUIRED (SECT. 123, B.2)
1. MAX. EMPLOYEES - 4 @ 1 SPACE EACH = 4
2. ACCESSORY VEHICLES - 1 @ 1 SPACE EACH = 1
3. SERVICE BAYS 3 @ 3 EACH = 9
REQUIRED PARKING = 14 SPACES
TOTAL PARKING PROVIDED = 14 SPACES

NO ADDITIONAL WATER AND SEWER ALLOCATIONS WILL BE REQUIRED. THE CONTRACTOR OR DEVELOPER SHALL CONTACT THE CONSTRUCTION INSPECTION SURVEY DIVISION, 24 HOUR IN ADVANCE OF COMMENCEMENT OF WORK AT 992-2417 OR 2418.

APPROVED
DIVISION OF LAND DEVELOPMENT & ZONING ADMINISTRATION
HOWARD COUNTY, MARYLAND
DATE 1-12-82



ST. JOHN'S PLAZA
PARCEL A-1
PLAT REF. 5114
2ND ELECTION DISTRICT
HOWARD COUNTY, MARYLAND

Mobil Oil Corporation
NORTH AMERICAN DIVISION
EASTERN REGION
VALLEY FORGE, PA 19482

FULL SERVICE-SELF SERVICE CONVERSION
U.S. ROUTE 40 & ST. JOHN'S LANE
ELICOTT CITY, MARYLAND

DRAWN *BETTY* DRAWING NUMBER 16-476
CHECKED *J.C.G.* SHEET NUMBER 1 OF 1
SCALE 1"=10'
DATE 9-81

SDP-82-70 81-150