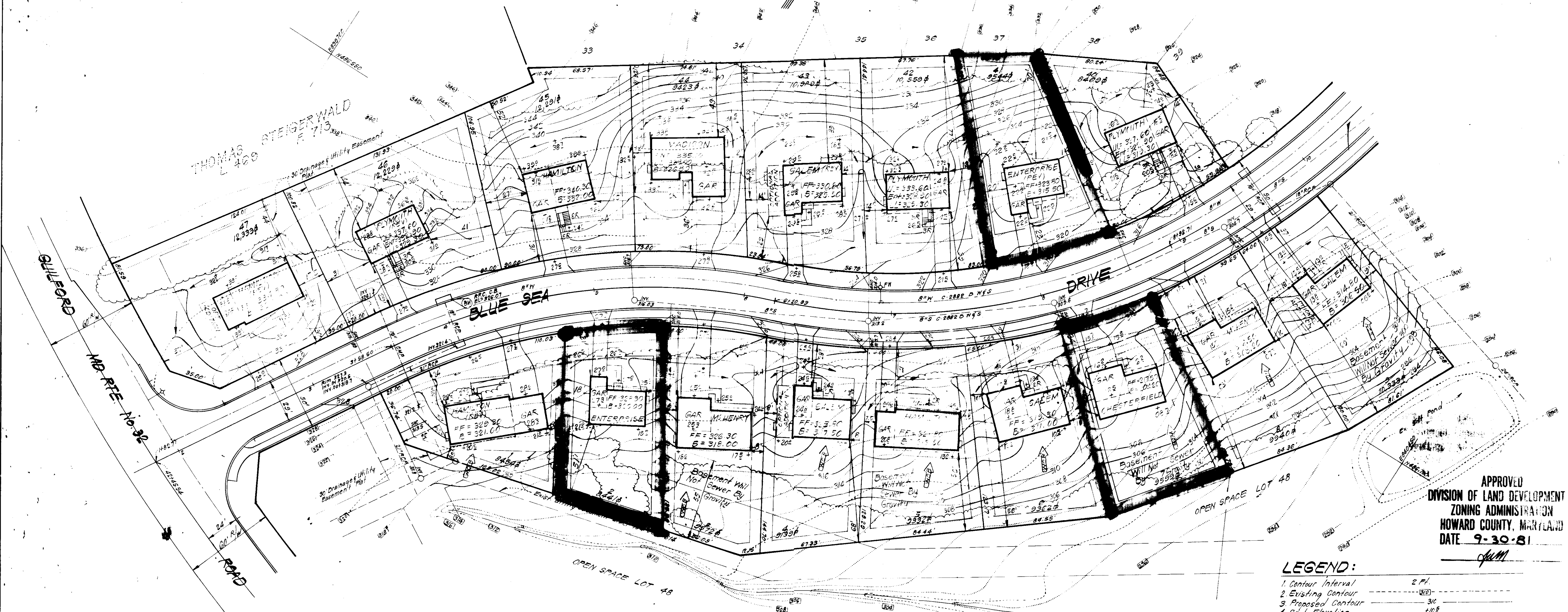
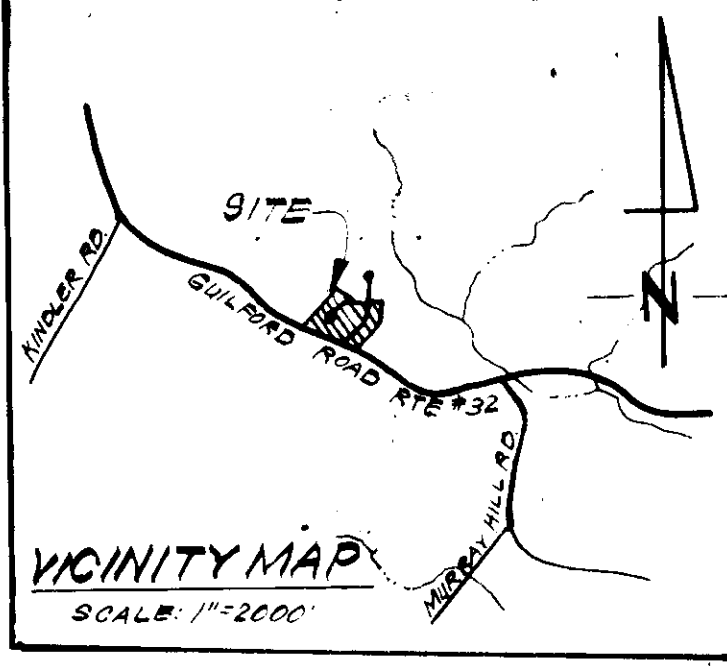


TYPICAL HOUSES  
1/4" SCALE

**GENERAL NOTES:**

1. The land included in this plan is zoned Newtown 5-F.M.D.
2. The lots shown on this plan or covered by Final Development Plan Phase 178 - Part I,
3. All coordinates are based on traverse controls for Columbia established by Mips Inc. in 1968 by Purdom & Jeske in 1968, which controls were tied to Maryland Bureau of Control Survey monuments and to U.S. Coast & Geodetic Survey monuments in the Columbia area.
4. The area covered in this submission is located on Tax Map # 42.
5. The total area included on this plan is 1.432 Acres.
6. All roadways are public & existing.
7. Any damage to county owned rights of way shall be corrected at the developer's expense.
8. Total Number of Lots is 6.



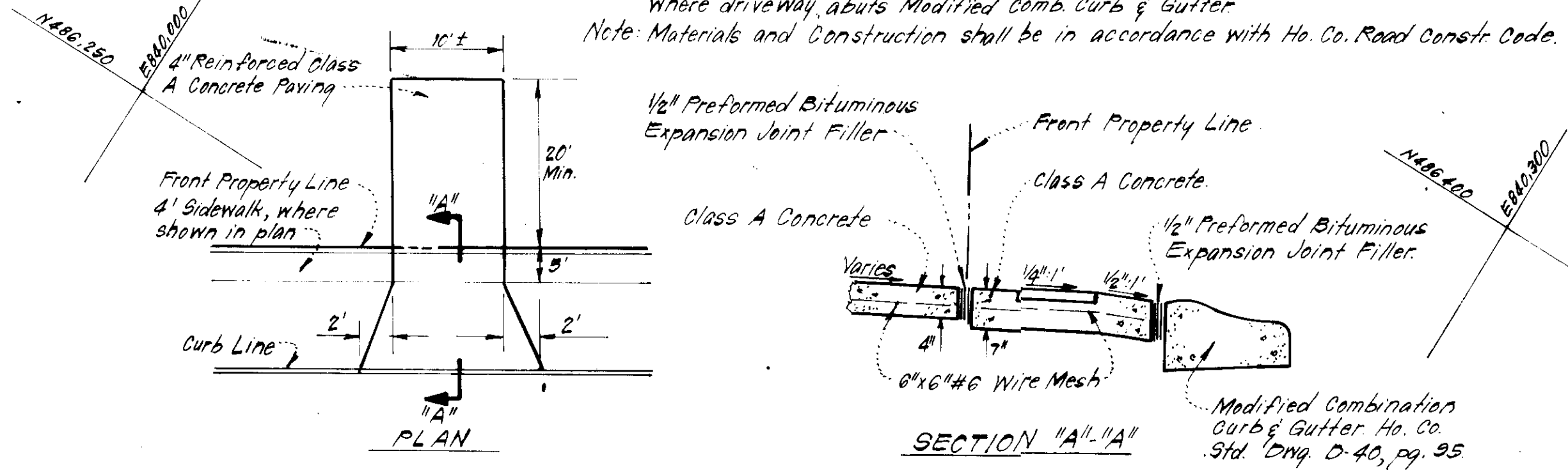
APPROVED  
DIVISION OF LAND DEVELOPMENT &  
ZONING ADMINISTRATION  
HOWARD COUNTY, MARYLAND  
DATE 9-30-81  
JMM

- LEGEND:**
- 1. Contour Interval 2'.
  - 2. Existing Contour 2'.
  - 3. Proposed Contour 3/16"
  - 4. Spot Elevation 1/16"
  - 5. Direction of Drainage
  - 6. Exist. Trees to be retained.
  - 7. Walk-Out Basement.
  - 8. Retaining Wall.
  - 9. Total Number of Lots in this submission: 34

NO.	REVISION	DATE
1	Changed use type & grad on Lot 1 & 2 from Enterprise to Chesterfield & Lot 4 from Salem (Rev) to Enterprise Rev.	9-2-81

Note: Use Residential Driveway Entrance, Ho. Co. Std. Dwg. D-34, Pg. 89, except where driveway abuts Modified Comb. Curb & Gutter.  
Note: Materials and Construction shall be in accordance with Ho. Co. Road Constr. Code.

Note: Basements will not sewer by gravity on lots 3, 5 & 7-9.



DRIVEWAY ABUTTING MODIFIED COMB. CURB & GUTTER  
No SCALE

**SURVEYOR'S CERTIFICATE**

I hereby certify that the information contained hereon is the same as shown on previously approved SDP 81-01 G, with the following exceptions:  
1. House Type and grading has been revised on Lots 2, 7, 23, 27, 39 & 41.  
I further certify that the Sediment & Erosion control measures, as previously approved, will not be affected, the grading is substantially the same as originally approved, the building setbacks comply with Howard County Zoning and Subdivision Regulations, and the lot has the same geometric configuration as shown on the respective recorded subdivision Plats.

Seal 8.11.81  
DATE  
RONALD B. SACKETT  
Registered Land Surveyor  
Md. No. 6059

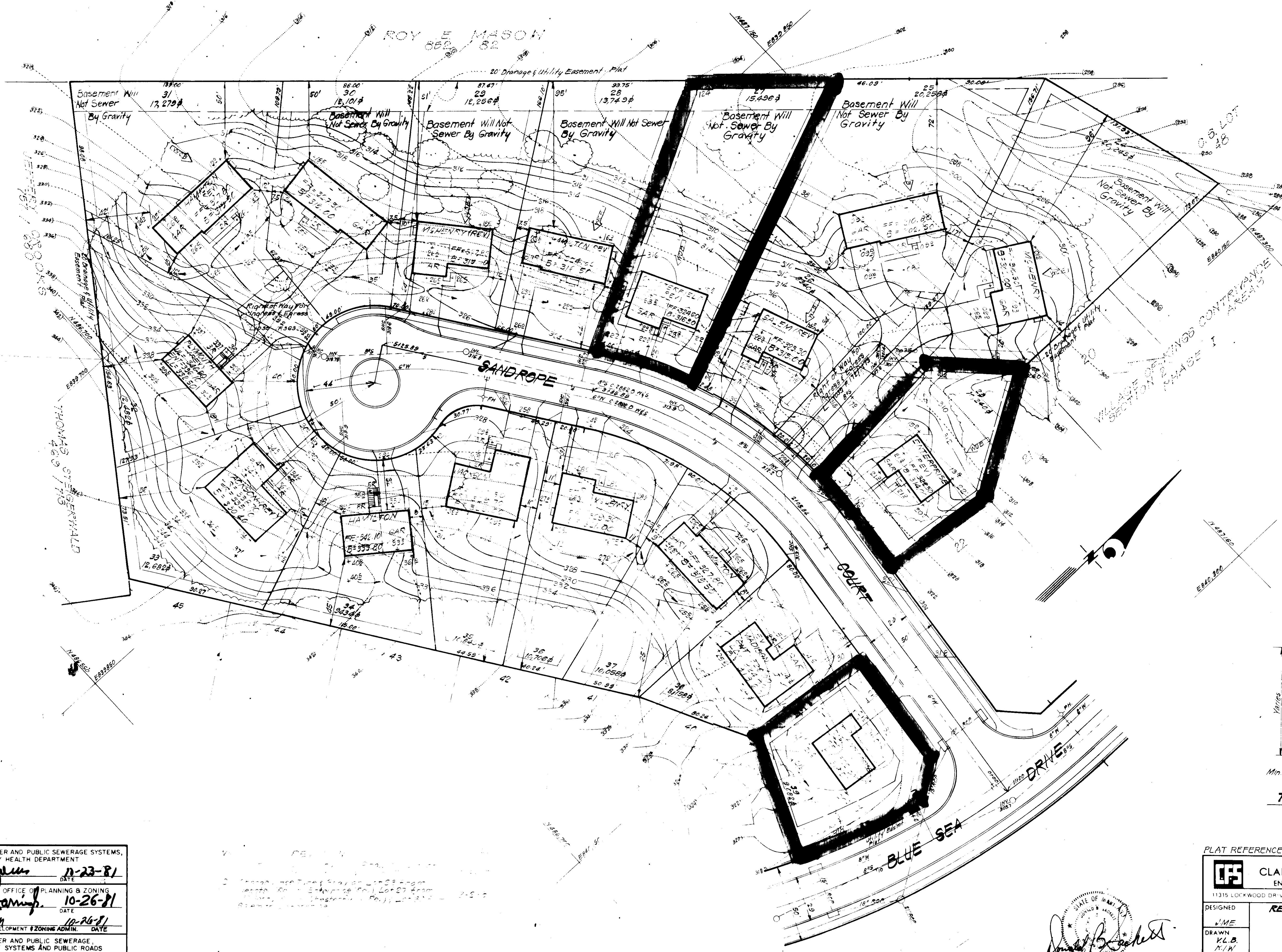
APPROVED FOR PUBLIC WATER AND PUBLIC SEWERAGE SYSTEMS,  
HOWARD COUNTY HEALTH DEPARTMENT  
J. M. ... 10-23-81  
APPROVED HOWARD COUNTY OFFICE OF PLANNING & ZONING  
D. ... 10-26-81  
APPROVED FOR PUBLIC WATER AND PUBLIC SEWERAGE,  
STORM DRAINAGE SYSTEMS AND PUBLIC ROADS  
HOWARD COUNTY DEPARTMENT OF PUBLIC WORKS  
H. E. ... 10-16-81  
DIRECTOR  
10-16-81

PLAT REFERENCE: PLATS 4670, 4671 & 4672

**CLARK • FINEROCK & SACKETT**  
ENGINEERS • PLANNERS • SURVEYORS  
11315 LOCKWOOD DRIVE SILVER SPRING MARYLAND 20904 (301) 593 3400

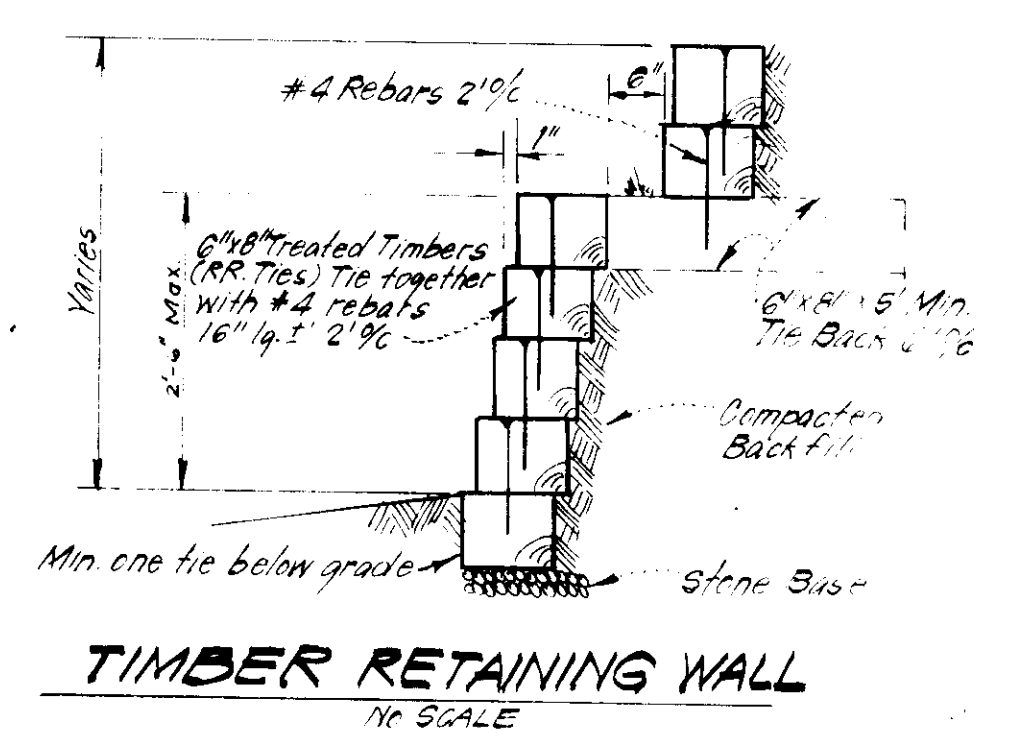
DESIGNED J.M.E.	REVISED SITE DEVELOPMENT PLAN LOTS 2, 7, 23, 27, 39 & 41	SCALE 1"=30'
DRAWN V.L.B.	<b>COLUMBIA</b>	DRAWING 1 of 2
CHECKED K.L.W.	VILLAGE OF KINGS CONTRIVANCE SECTION 2 AREA 3 6TH ELECTION DISTRICT	JOB NO. 80-072
DATE Sept., 1981	HOWARD COUNTY, MARYLAND FOR: The Ruland Group, Inc. (Columbia Div.) Suite 200 V.O.M. OFFICE Bldg. Columbia, Md. 21043	FILE NO. 80-072-X



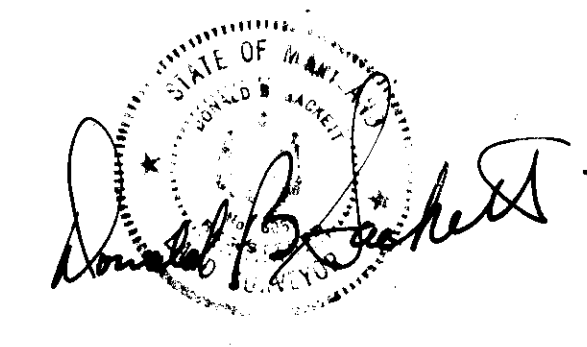


Note: Basement will not sewer by Gravity on Lots 24, 25 & 27 thru 31.

APPROVED  
 DIVISION OF LAND DEVELOPMENT &  
 ZONING ADMINISTRATION  
 HOWARD COUNTY, MARYLAND  
 DATE 9-30-81  
 JMM



APPROVED FOR PUBLIC WATER AND PUBLIC SEWERAGE SYSTEMS,  
 HOWARD COUNTY HEALTH DEPARTMENT  
 DATE 11-23-81  
 APPROVED HOWARD COUNTY OFFICE OF PLANNING & ZONING  
 DATE 10-26-81  
 APPROVED FOR PUBLIC WATER AND PUBLIC SEWERAGE,  
 STORM DRAINAGE SYSTEMS AND PUBLIC ROADS  
 HOWARD COUNTY DEPARTMENT OF PUBLIC WORKS  
 DATE 10-16-81  
 DATE 10-16-81



PLAT REFERENCE: PLATS 4670, 4671 & 4672

<b>CLARK • FINEFROCK &amp; SACKETT</b> ENGINEERS • PLANNERS • SURVEYORS 11315 LORWOOD DRIVE • SILVER SPRING, MARYLAND 20904 • 301-563-6400		
DESIGNED	J.M.E.	SCALE 1"=30'
DRAWN	K.L.B. K.L.W.	DRAWING 20-2
CHECKED	J.M.E.	JOB NO. 80172
DATE	Sept. 1981	FILE NO. 80172-X

REVISED SITE DEVELOPMENT PLAN  
 LOTS 2, 7, 23, 29, 30 & 41  
**COLUMBIA**  
 VILLAGE OF KINGS CONTRIVANCE  
 SECTION 2, AREA 3  
 6TH ELECTION DISTRICT  
 HOWARD COUNTY, MARYLAND  
 For: The Ryland Group, Inc., Columbia, Md.  
 Suite 200, W.C.M. Office Bldg.  
 Columbia, Md. 21043