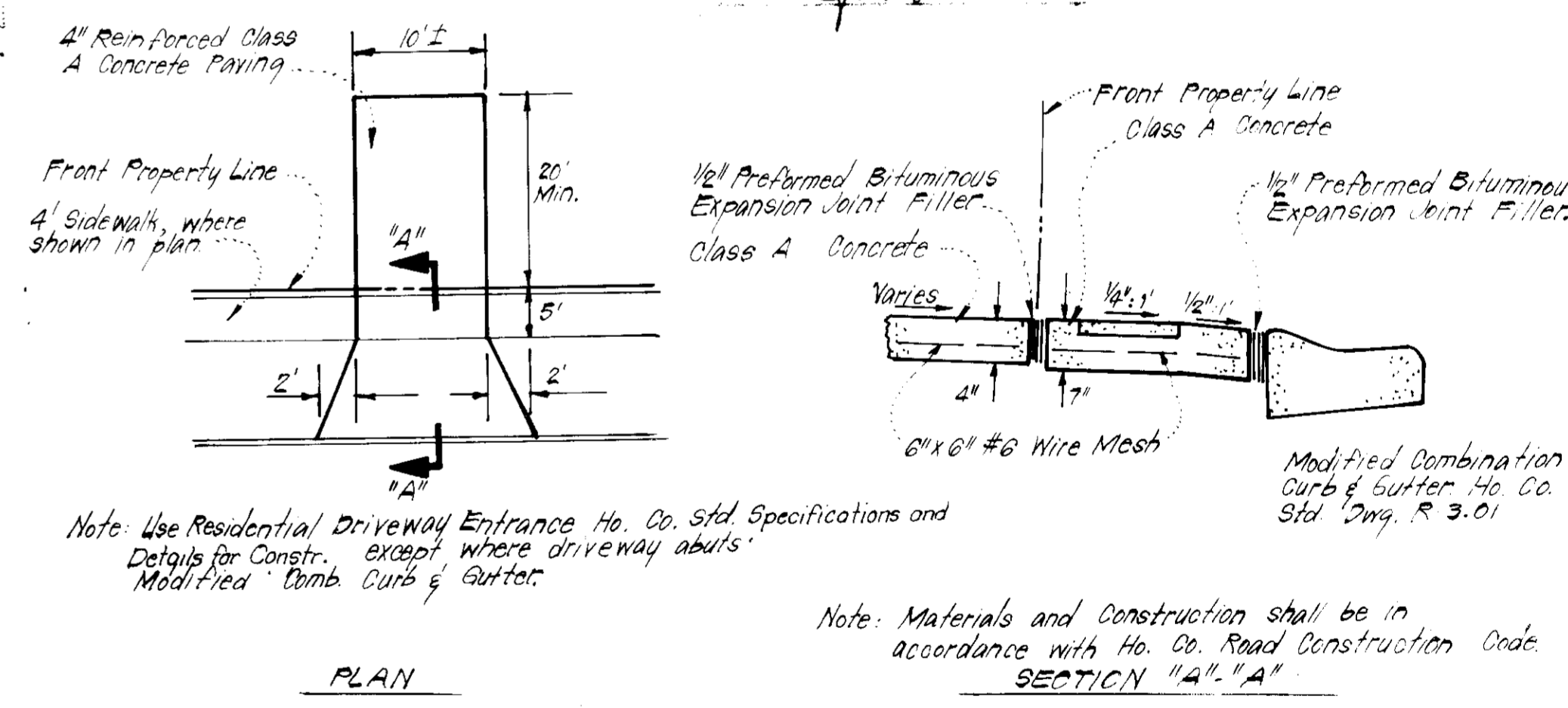


- GENERAL NOTES:**
- The land included in this plan is zoned: New Town (S.F.M.D.).
 - The lots shown on this plan are covered by Final Development Plan Phase 169 Part 2.
 - All coordinates are based on traverse controls for Columbia established by Maes Inc. in 1965, by Purdum & Jeschke, in 1968 which controls were tied to Maryland Bureau of Control Survey monuments and U.S. Coast & Geodetic Survey monuments in the Columbia area.
 - The area covered in this submission is located on Tax Map #42.
 - The total area included on this plan is 1.572 Acres.
 - All roadways are public and existing.
 - Any damage to county owned rights of way shall be corrected at the developers expense.
 - Total Number of Lots: 4

- LEGEND:**
- 1 Contour Interval 2 FT
 - 2 Existing Contour
 - 3 Proposed Contour
 - 4 Spot Elevation +60E
 - 5 Direction of Drainage
 - 6 Exist. Trees to be retained

APPROVED
DIVISION OF LAND DEVELOPMENT &
ZONING ADMINISTRATION
HOWARD COUNTY, MARYLAND
DATE 9-11-81
JUM



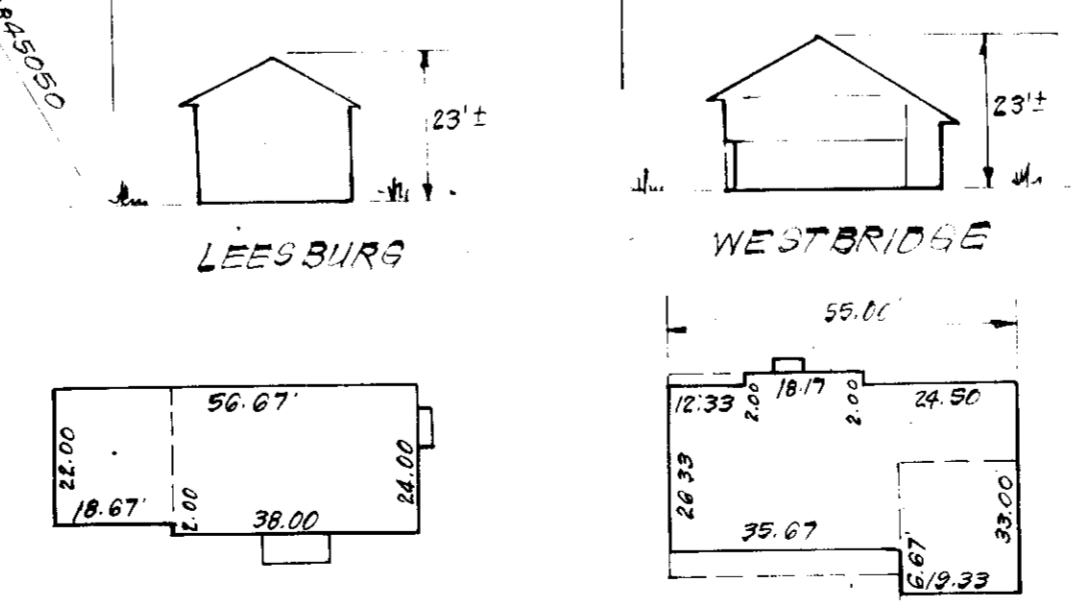
PLAN
DRIVEWAY ABUTTING MODIFIED COMB. CURB & GUTTER
No SCALE

SURVEYOR'S CERTIFICATE

I hereby certify that the information contained hereon is the same as shown on previously approved SDP 81-166 C with the following exceptions:
1. House Type and Grading has been revised on Lots 27 thru 29 and Lot 33.

I further certify that the Sediment & Erosion Control measures, as previously approved, will not be affected, the grading is substantially the same as originally approved, the building setbacks comply with the Howard County Zoning and Subdivision Regulations, and the lot has the same geometric configuration as shown on the respective recorded subdivision plans.

8/18/81
Date
DONALD B. SACKETT
Registered Land Surveyor
Md. No. 6059



TYPICAL HOUSES
No SCALE

FOR CONTINUATION SEE SHEET 2

APPROVED FOR PUBLIC WATER AND PUBLIC SEWERAGE SYSTEMS,
HOWARD COUNTY HEALTH DEPARTMENT
9-28-81
DATE

APPROVED HOWARD COUNTY OFFICE OF PLANNING & ZONING
9-29-81
DATE

APPROVED FOR PUBLIC WATER AND PUBLIC SEWERAGE,
STORM DRAINAGE SYSTEMS AND PUBLIC ROADS
HOWARD COUNTY DEPARTMENT OF PUBLIC WORKS
9-23-81
DATE

9-22-81
DATE

CLARK • FINEFROCK & SACKETT ENGINEERS • PLANNERS • SURVEYORS 11315 LOCKWOOD DRIVE SILVER SPRING, MARYLAND 20904 (301) 513 3400		
DESIGNED	JME	SCALE 1"=30'
DRAWN	JME	DRAWING 10x1
CHECKED	K.I.W.	JOB NO. 80-104
DATE	8-18-81	FILE NO. 80-104-X
SITE DEVELOPMENT PLAN LOTS 27 THRU 29 & LOT 33 COLUMBIA VILLAGE OF KINGS CONTRIVANCE SECTION 3 AREA 2 6TH ELECTION DISTRICT HOWARD COUNTY, MARYLAND FOR: FULTE HOMES CORP. 11120 New Hampshire Avenue Silver Spring, Md 20904		