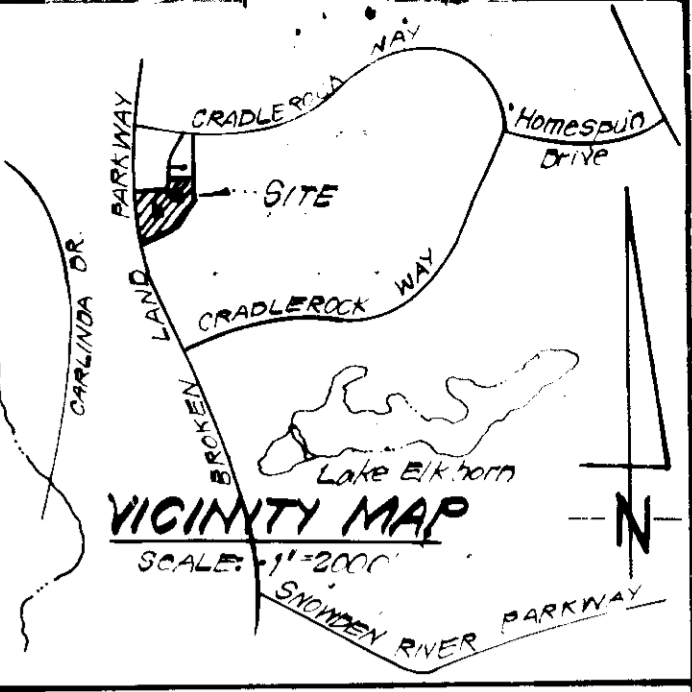


COLUMBIA VILLAGE OF OWEN BROWN SECTION 1 AREA 1 PLAT 4140

COLUMBIA VILLAGE OF OWEN BROWN SECTION 1 AREA 1 PLAT 4139

NOTES: Approved Road Construction Plans shall be used for installation of all Public Utilities
Public Water & Sewer shown for Reference only - for more detailed information see Water & Sewer Plans Contract No. 24-1007-D.



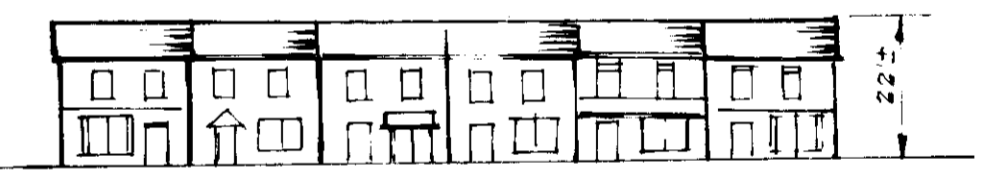
APPROVED
PLANNING BOARD
OF HOWARD COUNTY
DATE 10-7-81

GENERAL NOTES:

1. The land included in this plan is zoned: New Town Attached.
2. The Lots shown on this plan are covered by Final Development Plan Phase 113-A-IX, recorded as Plats thru
3. All coordinates are based on traverse controls for Columbia established by Maps Inc. in 1965, by Purdom & Jeschke in 1968 which controls were tied to Maryland Bureau of Control Survey monuments and to U.S. Coast and Geodetic Survey monuments in the Columbia Area.
4. The area covered is located on Tax Map # 36, Parcel 445.
5. The total area included in this plan is 5.937 Acres.
6. All roadways are public and existing.
7. Any damage to county owned right of way shall be corrected at the developer's expense.
8. No. of Units shown: 72
9. No. of Parking Spaces shown: 154

LEGEND:

1. Contour Interval 2 FT.
2. Existing Contour
3. Proposed Contour
4. Spot Elevation
5. Direction of Drainage
6. Walk-Out Basement
7. Retaining Wall
8. 100 Yr. Flood Plain Elevation
9. Exist. Trees to be retained



TYPICAL HOUSE TYPES

SPECIAL NOTES:

1. Sediment & Erosion Control Plans have been approved as part of the final plan of submission F-81-132-C.
2. It will be the developer's responsibility to maintain the sediment and erosion control in a satisfactory condition until the project is completed.
3. Adjust Perimeter Dike along Broken Land Parkway to protect all disturbed areas and to maintain positive drainage to Sediment Trap.
4. If, prior to completion of all buildings, the developer wishes to have the public roads and utilities associated with the County maintenance, a new sediment & erosion control plan must be approved by the Howard Soil Conservation District.
5. The Water & Sewer House Connections not included in a "Developer's Agreement" shall conform to the Howard County Plumbing Code. The On Site Water House Connections shall be 1\"/>

PLAT REFERENCE: PLAT 4987

CLARK • FINEROCK & SACKETT ENGINEERS • PLANNERS • SURVEYORS 11315 LUXWOOD DRIVE • SILVER SPRING, MARYLAND 20904 • (301) 541-1800			
DESIGNED	J.M.E.	SITE DEVELOPMENT PLAN LOTS B-74 THRU B-149 (A RESUBDIVISION OF LOT B-73) COLUMBIA	SCALE 1"=30'
DRAWN	J.M.E.	VILLAGE OF OWEN BROWN SECTION 1 AREA 1 6TH ELECTION DISTRICT HOWARD COUNTY, MARYLAND	DRAWING 10P 4
CHECKED	J.M.E.	FOR: The Ryland Group, Inc. (C.H. Div.) 7264-B Cradle Rock Way Columbia, Maryland 21045	JOB NO. 91-067
DATE	7-21-81		FILE NO. 81-067-X

REVISION	DATE
1. LOTS B-74 THRU B-149 LOWERED 05'	9-22-81

APPROVED FOR PUBLIC WATER AND PUBLIC SEWERAGE SYSTEMS, HOWARD COUNTY HEALTH DEPARTMENT	
	11-5-81
APPROVED HOWARD COUNTY OFFICE OF PLANNING & ZONING	
	11-9-81
APPROVED FOR PUBLIC WATER AND PUBLIC SEWERAGE, STORM DRAINAGE SYSTEMS AND PUBLIC ROADS, HOWARD COUNTY DEPARTMENT OF PUBLIC WORKS	
	11-2-81
CHIEF BUREAU OF ENGINEERING	
	10/30/81

FOR CONTINUATION - SEE SHEET 2

OWNER: OWEN BROWN "B" DEVELOPMENT
90 Howard Research & Development Corp.
The Rouse Co. Bldg., Col. Md. 21044 Ph. 302-6071

COLUMBIA
VILLAGE OF OWEN BROWN
SECTION 1 AREA 1
PLAT 4133

FOR CONTINUATION SEE SHEET 1



OPEN SPACE LOT 283
VILLAGE OF OWEN BROWN
SECTION 1 AREA 1
P.B. 27 F. 51

APPROVED
PLANNING BOARD
OF HOWARD COUNTY
DATE 10-7-81
John

APPROVED FOR PUBLIC WATER AND PUBLIC SEWERAGE SYSTEMS,
HOWARD COUNTY HEALTH DEPARTMENT
Joseph M. Conner 11-5-81
COUNTY HEALTH OFFICER DATE
APPROVED HOWARD COUNTY OFFICE OF PLANNING & ZONING
Thomas S. Kanning 11-9-81
PLANNING DIRECTOR DATE
John W. Muschler 11-6-81
CHIEF DIVISION OF LAND DEVELOPMENT & ZONING ADMIN. DATE
APPROVED FOR PUBLIC WATER AND PUBLIC SEWERAGE,
STORM DRAINAGE SYSTEMS AND PUBLIC ROADS
HOWARD COUNTY DEPARTMENT OF PUBLIC WORKS
Henry F. Neman 11-2-81
DIRECTOR DATE
Robert E. ... 10-24-81
CHIEF BUREAU OF ENGINEERING DATE

PLAT REFERENCE PLAT 4178

CLARK • FINEFROCK & SACKETT ENGINEERS • PLANNERS • SURVEYORS 11315 LAKWOOD DRIVE SILVER SPRING, MARYLAND 20904 301-541-1410		
DESIGNED J.M.E.	SITE DEVELOPMENT PLAN LOTS B-74 THRU B-143 (A RESUBDIVISION OF LOT B-73) COLUMBIA VILLAGE OF OWEN BROWN SECTION 1 AREA 1 6TH ELECTION DISTRICT HOWARD COUNTY, MARYLAND FOR: The Ryland Group Inc. (T.H. Div.) 1204-6 Cradlebrook Way Columbia, Maryland 21045	SCALE 1"=30'
DRAWN K.I.W.		DRAWING 20F-4
CHECKED J.M.E.		JOB NO. 81-067
DATE 7-2-81		FILE NO. 81-067-X

OWNER: OWEN BROWN "B" DEVELOPMENT
36 Howard Research & Development Corp.
The Route Co. Bldg. Col. Md. 21044 PH 992-6027

PLANT SCHEDULE

KEY	PLANT NAME	SIZE	QUANT	REMARKS
⊕	ACER RUBRUM 'OCTOBER GLORY' OCTOBER GLORY MAPLE	2 1/2"-3" CAL 12-14' HT	41	B+B HEAVY HEAD
⊕	ACER PLATANOIDES NORWAY MAPLE	"	17	" " "
⊕	QUERCUS PALUSTRIS PIN OAK	"	7	" " "
⊕	QUERCUS PALUSTRIS PIN OAK	"	24	" " "
⊕	SOPHORA JAPONICA JAPANESE PAGODA TREE	"	15	" " "
⊕	SALIX BABYLONICA BABYLON WEEPING WILLOW	"	8	" " "
⊕	QUERCUS RUBRA NORTHERN RED OAK	"	19	" " "
⊕	FRAXINUS P. LANCEOLATA SEEDLESS GREEN ASH	"	16	" " "
⊕	PRUNUS SERRULATA KWANZAN KWANZAN CHERRY	2-2 1/2" CAL 8-10' HT.	13	B+B HEAVY HD
⊕	CORNUS FLORIDA FLOWERING DOGWOOD	"	17	" " "
⊕	OXYDENDRUM ARBOREUM SOURWOOD	"	13	" " "
⊕	ACER GINMALA AMUR MAPLE	"	12	" " "
⊕	PRUNUS CERASIFERA 'THUNDERCLOUD' PURPLE LEAF PLUM	"	5	" " "
⊕	PINUS STROBUS WHITE PINE	6-8' HT.	29	B+B HEAVY
⊕	PINUS STROBUS WHITE PINE	8-10' HT.	34	" " "
⊕	PINUS THUNBERGI JAPANESE BLACK PINE	6-7' HT.	9	" " "
⊕	PINUS THUNBERGI JAPANESE BLACK PINE	7-8' HT.	9	" " "
A9	ABELIA GRANDIFLORA GLOSSY ABELIA	3-4' HT.	11	B+B HEAVY
Bj	BERBERIS JULIANAE WINTERGREEN BARBERRY	18-24" CR.	10	" " "
Es	EUCONYMIUS SIEBOLDIANUS SIEBOLD EUCONYMIUS	24-30" CR.	7	" " "
Ic	ILEX CRENATA HETZII HETZ JAPANESE HOLLY	18-24" CR.	7	" " "
Tb	TAXUS PREVIFOLIA COMPACT SPREADING YEW	18-24" CR.	5	" " "
CR	CHRYSANTHEMUMS (YELLOW)	POTED		POTED HEAVY PLANT IN MASS
CR	" (RUST)	"		" " "
CR	" (RED)	"		" " "

APPROVED
PLANNING BOARD
OF HOWARD COUNTY
DATE 10-7-81
[Signature]

NOTE • ALL PLANTING TO COMPLY WITH STANDARD "COLUMBIA PLANTING SPECIFICATIONS" AS PER H.R.D.
• CONTRACTOR TO VERIFY UNDERGROUND UTILITIES PRIOR TO DIGGING.

APPROVED: FOR PUBLIC WATER AND PUBLIC SEWERAGE SYSTEMS, HOWARD COUNTY HEALTH DEPARTMENT
[Signature] 11-5-81
COUNTY HEALTH OFFICER DATE

APPROVED: HOWARD COUNTY OFFICE OF PLANNING & ZONING
[Signature] 11-9-81
PLANNING DIRECTOR DATE

APPROVED: FOR PUBLIC WATER AND PUBLIC SEWERAGE, STORM DRAINAGE SYSTEMS AND PUBLIC ROADS, HOWARD COUNTY DEPARTMENT OF PUBLIC WORKS
[Signature] 11-2-81
DIRECTOR DATE

APPROVED: CHIEF BUREAU OF ENGINEERING
[Signature] 10/30/81
DATE



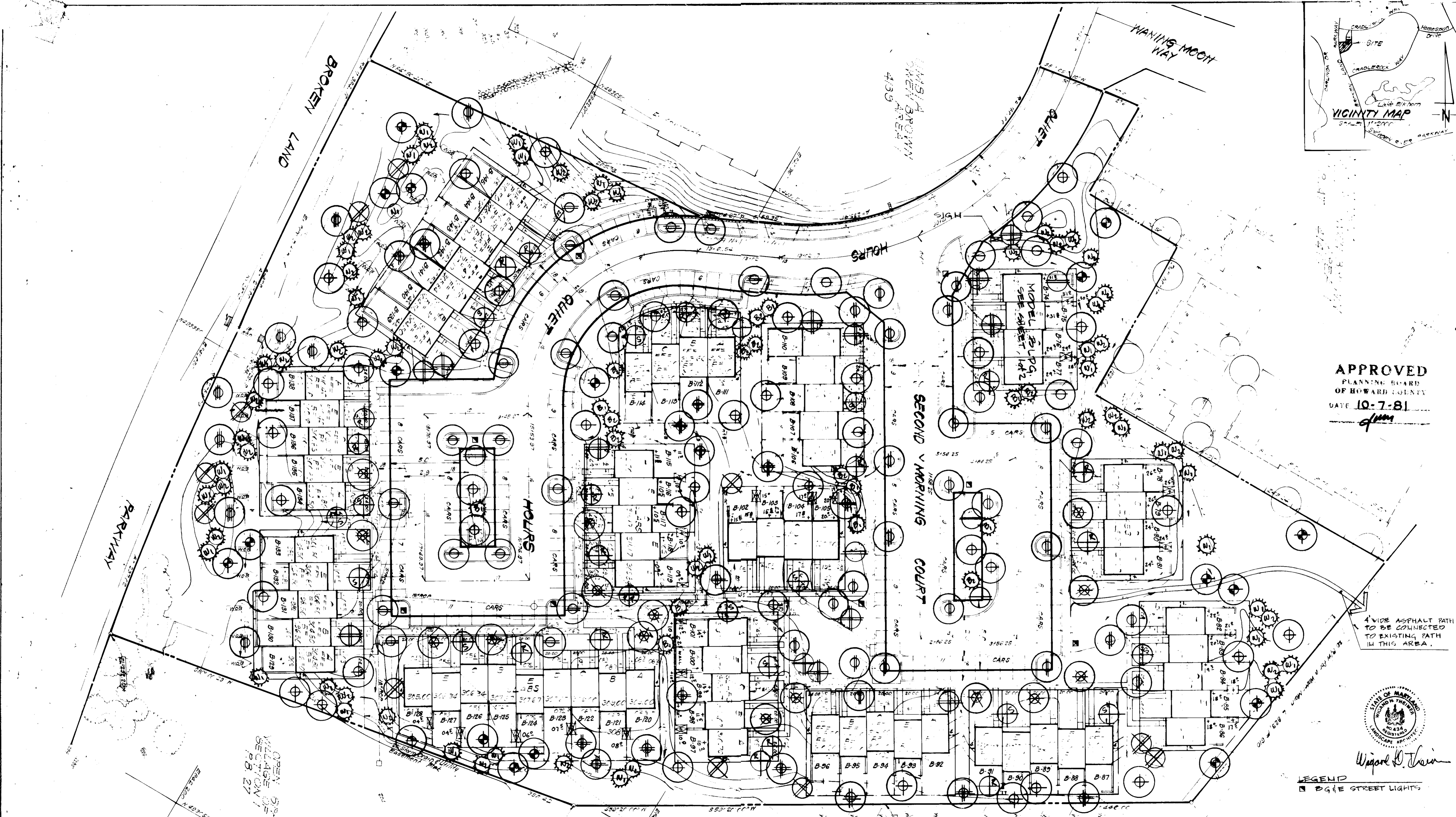
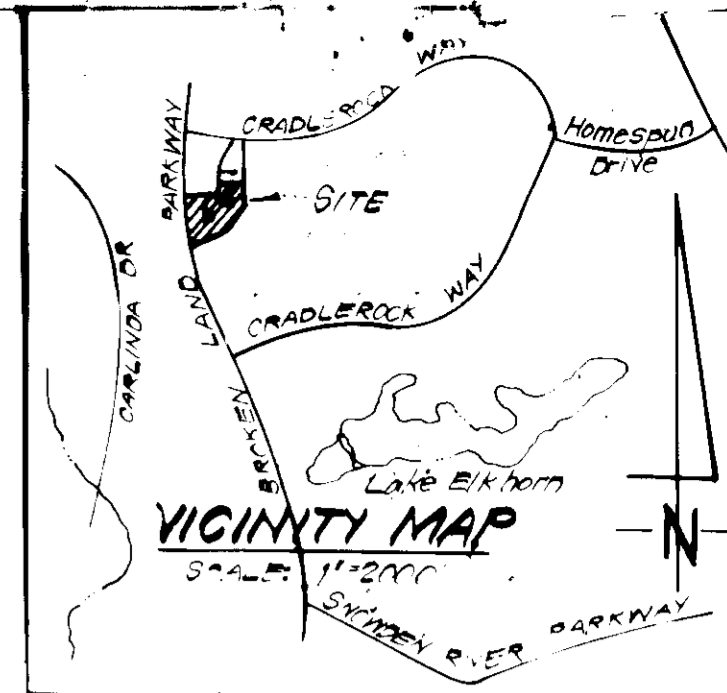
[Signature]

9/11/81 AS PER OWNER
REVISED: 8/28/81 AS PER HRD ARC

CLARK • FINEFROCK & SACKETT
ENGINEERS • PLANNERS • SURVEYORS
11315 LOCKWOOD DRIVE SILVER SPRING, MARYLAND 20904 (301) 543-7200

LANDSCAPE PLANTING PLAN
LOTS B-74 THRU B-145 A RESUBDIVISION OF PARCEL B-73
COLUMBIA
VILLAGE OF OVEN BROWN SECTION I AREA I STELECTION DISTRICT HOWARD COUNTY, MARYLAND

DESIGNED V.H.T. SCALE 1"=10'
DRAWN V.H.T. DRAWING 3044
CHECKED JOB NO. 81-067
DATE 8/12/81 FOR: THE RYLAND GROUP INC. (T.H.D.V.) 7246 CRADLE ROCK WAY COLUMBIA, MARYLAND, 21045 FILE NO. 81-067-LS



APPROVED
 PLANNING BOARD
 OF HOWARD COUNTY
 DATE **10-7-81**
[Signature]

4' WIDE ASPHALT PATH
 TO BE CONNECTED
 TO EXISTING PATH
 IN THIS AREA.



William D. Thain

LEGEND
 ■ 8' GEE STREET LIGHTS

APPROVED FOR PUBLIC WATER AND PUBLIC SEWERAGE SYSTEMS,
 HOWARD COUNTY HEALTH DEPARTMENT
[Signature] 11-5-81
 HEALTH OFFICER
 APPROVED HOWARD COUNTY OFFICE OF PLANNING & ZONING
[Signature] 11-9-81
 PLANNING DIRECTOR
[Signature] 11-6-81
 CHIEF DIVISION OF LAND DEVELOPMENT & ZONING ADMIN. DATE
 APPROVED FOR PUBLIC WATER AND PUBLIC SEWERAGE,
 STORM DRAINAGE SYSTEMS AND PUBLIC ROADS
 HOWARD COUNTY DEPARTMENT OF PUBLIC WORKS
[Signature] 11-2-81
 DIRECTOR
[Signature] 10/30/81
 CHIEF BUREAU OF ENGINEERING DATE

OPEN SPACE LOT 283
 VILLAGE OF OWEN BROWN
 SECTION 1
 P.B. 27
 F. 51

OPEN SPACE LOT 283
 W.O.B. SECTION 1 AREA 1
 P.B. 27 F. 51

PLAT REFERENCE: PLAT 4987

CLARK • FINEROCK & SACKETT ENGINEERS • PLANNERS • SURVEYORS 11315 LUX WOOD DRIVE SILVER SPRING, MARYLAND 20904 (301) 591-1400				
DESIGNED	WHT	LANDSCAPE PLANTING PLAN LOTS B-74 THRU B-145 (A RESUBDIVISION OF LOT B-73) COLUMBIA VILLAGE OF OWEN BROWN SECTION 1 AREA 1 6TH ELECTION DISTRICT HOWARD COUNTY, MARYLAND PDR: The Ryland Group Inc. (T.H. DIV.) 7204 G Cradlebrook Way Columbia, Maryland 21045	SCALE	1"=30'
DRAWN	WHT		JOB NO	4 of 4
CHECKED			DATE	8/067
			DATE	8/067-LS

SDP-82-10C