

GENERAL NOTES

- Existing Zoning: RMH
- For Road Construction Drawings see Village of Deep Run, Section I Area I Lots A1 to A67 a Resubdivision of Part of Parcel "A", File F-81-09, Plat No. 4784
- Tax Map 37 Parcel 163.
- Total Area of Submission 10.958 Acres
- Sediment Control measures have been outlined on this plan. For complete sediment control details see the approved road construction and sediment control plans titled "Village of Deep Run Section I, Area I", Howard County File No. F-81-09.
- For Landscape Details see sheet B of B of the road construction plans titled "Village of Deep Run Section I, Area I", Howard County File No. F-81-09.
- Number of unit lots: 65 lots on 6.563 Acres
- Number of Open Space lots: 2 lots on 1.108 Acres
- Total number of lots: 67
- Total area of subdivision 10.958 Ac.
- % of Open Space: 10.1%

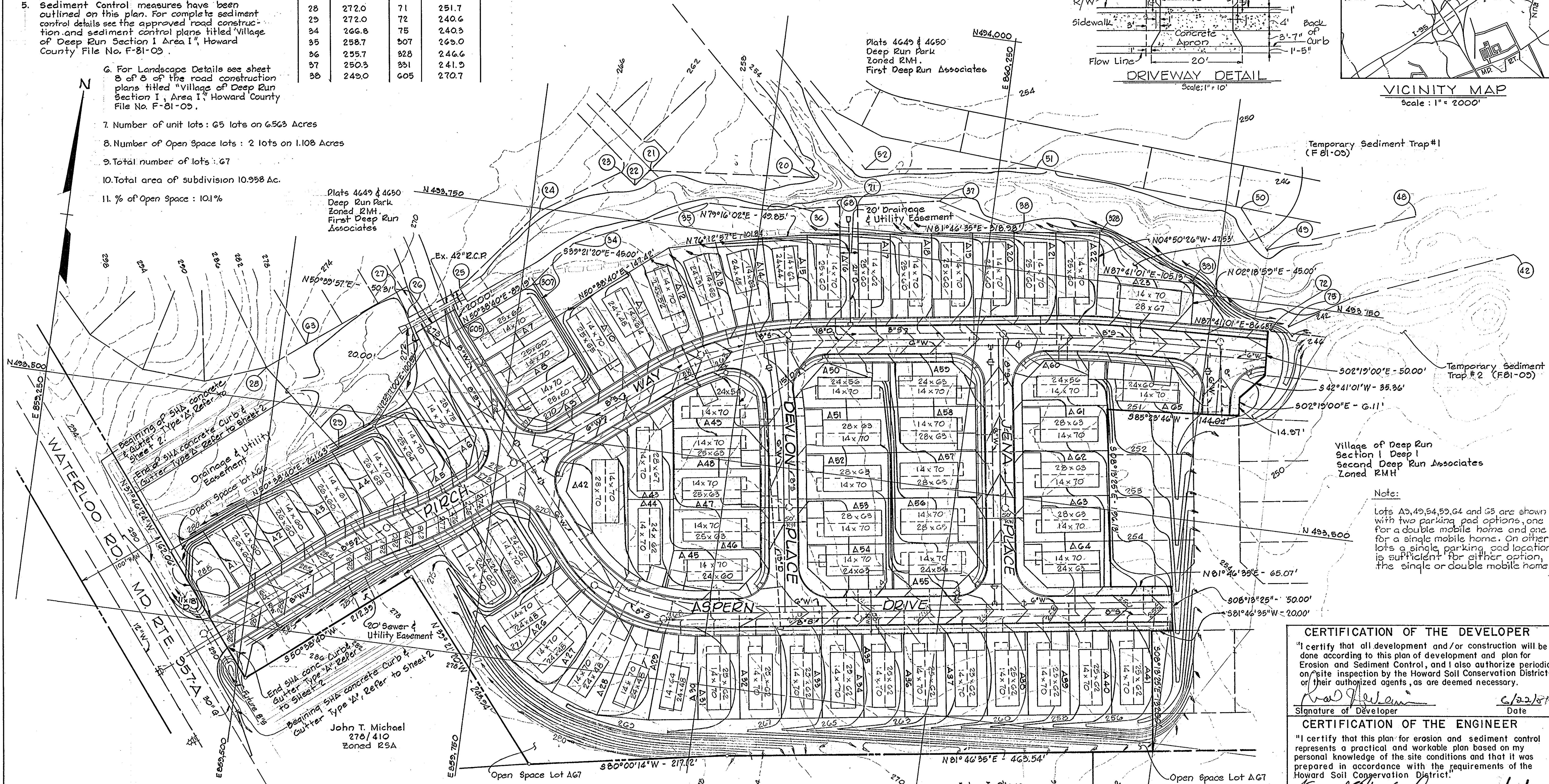
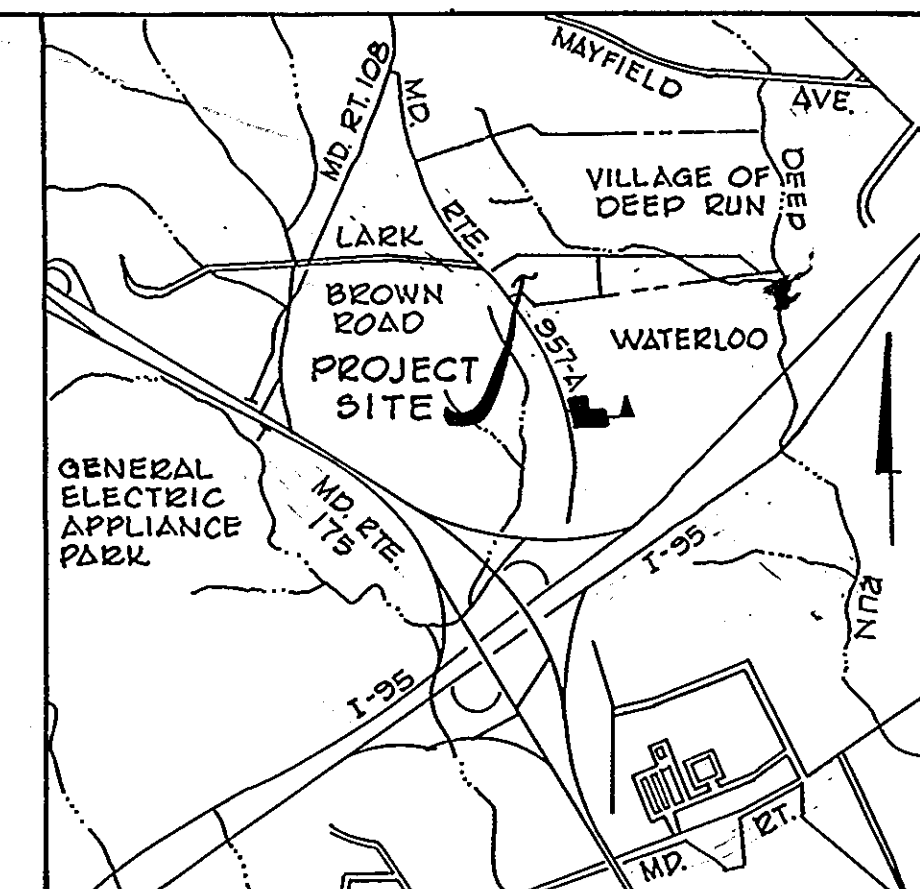
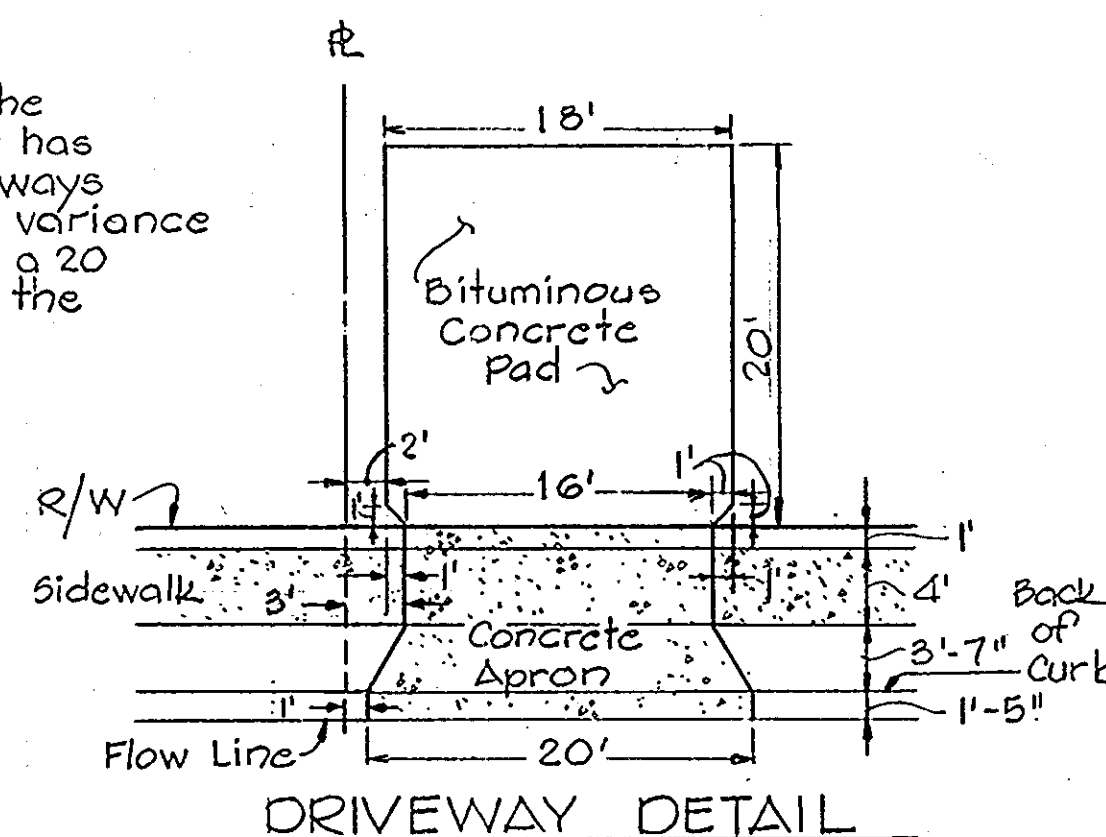
100 YEAR FLOOD PLAN			
ELEVATIONS			
20	252.8	42	234.4
21	261.0	48	237.6
22	261.8	49	240.8
23	262.2	50	242.1
24	267.7	51	248.6
25	270.7	52	251.7
26	272.0	63	272.0
27	272.5	68	251.7
28	272.0	71	251.7
29	272.0	72	240.6
34	266.8	75	240.3
35	258.7	807	269.0
36	255.7	928	246.6
37	250.3	931	241.9
38	249.0	605	270.7

SEDIMENT CONTROL NOTE FOR LOT DEVELOPMENT

Sediment Control devices will be maintained in functioning conditioning until all lots are stabilized and approval for removal has been obtained from the sediment control inspector.

Note:

By letter dated May 27, 1981 From the Director of Public Works a waiver has been granted to construct driveways 2 feet from the property and a variance has been granted to construct a 20 foot wide concrete apron at the curb flow line.



Temporary Sediment Trap #1 (F-81-09)

Temporary Sediment Trap #2 (F-81-09)

Village of Deep Run Section I Deep I Second Deep Run Associates Zoned RMH

Note:
Lots A3, A9, A4, A5, A4 and A5 are shown with two parking pad options, one for a double mobile home and one for a single mobile home. On other lots a single parking pad location is sufficient for either option, the single or double mobile home.

CERTIFICATION OF THE DEVELOPER
"I certify that all development and/or construction will be done according to this plan of development and plan for Erosion and Sediment Control, and I also authorize periodic on site inspection by the Howard Soil Conservation District or their authorized agents, as are deemed necessary."
Signature of Developer: *John T. Michael* Date: 6/22/81

CERTIFICATION OF THE ENGINEER
"I certify that this plan for erosion and sediment control represents a practical and workable plan based on my personal knowledge of the site conditions and that it was prepared in accordance with the requirements of the Howard Soil Conservation District."
Signature of Engineer: *Joel Kline* Date: 6/22/81

APPROVED: HOWARD COUNTY OFFICE OF PLANNING AND ZONING.
THOMAS J. JAMIS, PLANNING DIRECTOR, 7-9-81
APPROVED: FOR PUBLIC WATER, PUBLIC SEWERAGE AND STORM DRAINAGE SYSTEMS AND ROADS HO. CO. DEPT. OF PUBLIC WORKS.
KENNETH A. McCORD, Registered Engineer, No. 1974, 7/7/81

APPROVED: THIS DEVELOPMENT PLAN IS APPROVED FOR SOIL EROSION AND SEDIMENT CONTROL BY THE HOWARD SOIL CONSERVATION DISTRICT.
WILLIAM J. HARRIS, CHIEF, DIVISION OF LAND, DEV. & ZONE, ADMIN. DATE 7-9-81
APPROVED: FOR PUBLIC WATER AND PUBLIC SEWERAGE SYSTEMS HOWARD COUNTY HEALTH DEPARTMENT.
JOHN J. OLEXY, COUNTY HEALTH OFFICER, 7-9-81

APPROVED DIVISION OF LAND DEVELOPMENT & ZONING ADMINISTRATION HOWARD COUNTY, MARYLAND DATE 6-24-81
JOHN J. OLEXY, 595/772, Zoned RSA
JOEL KLINE, TRUSTEE, 456/540, Zoned RSA

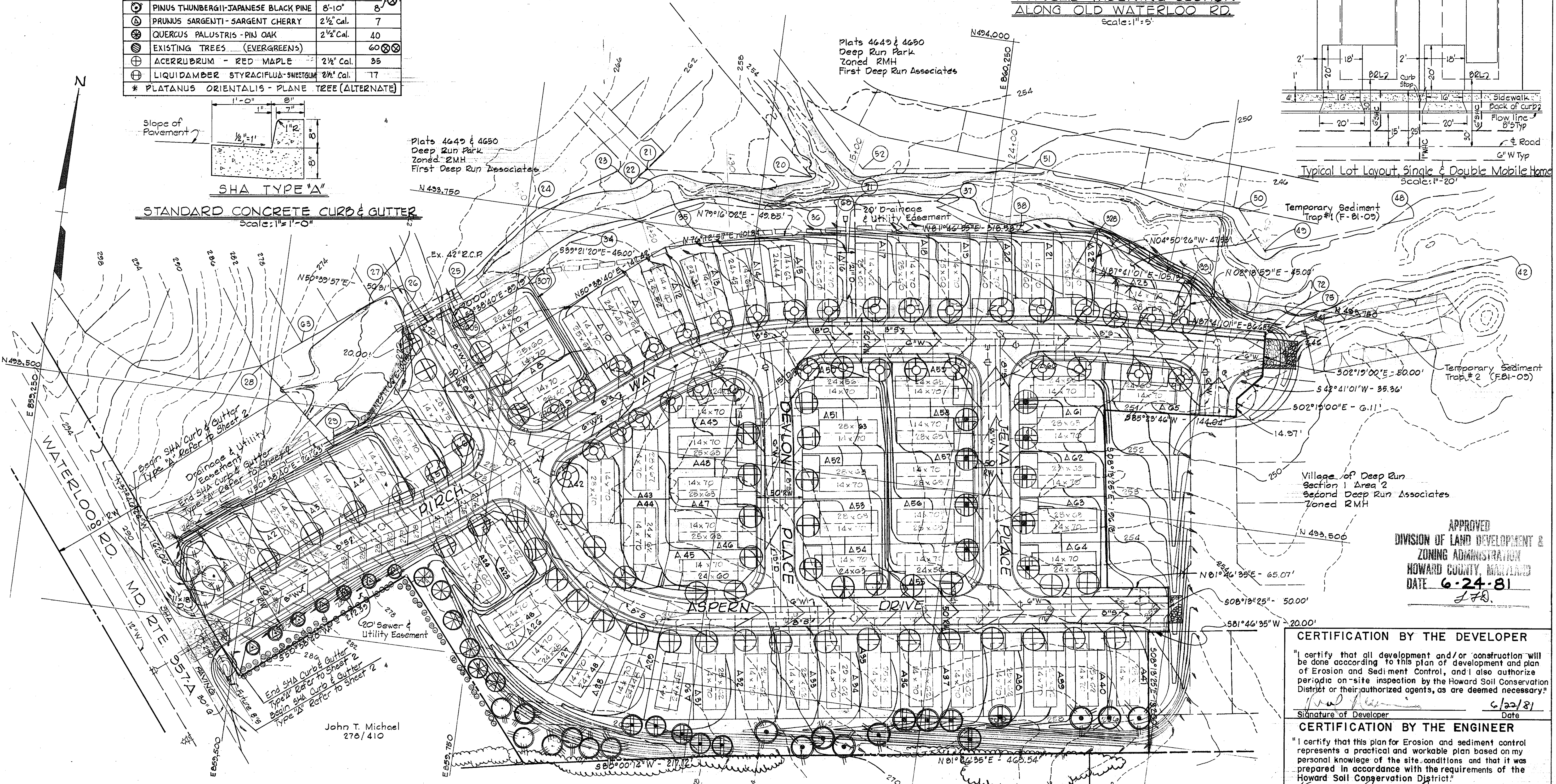
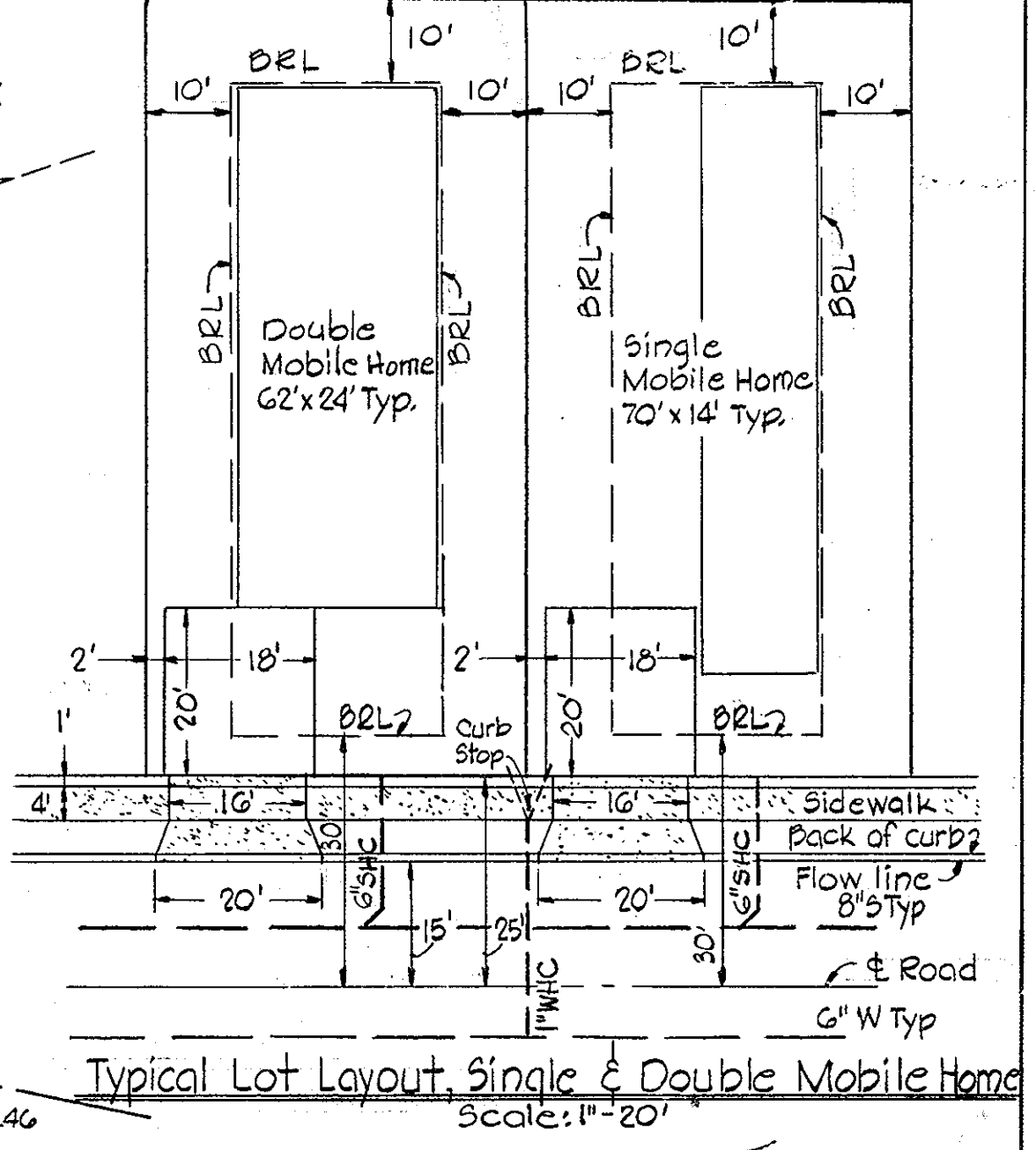
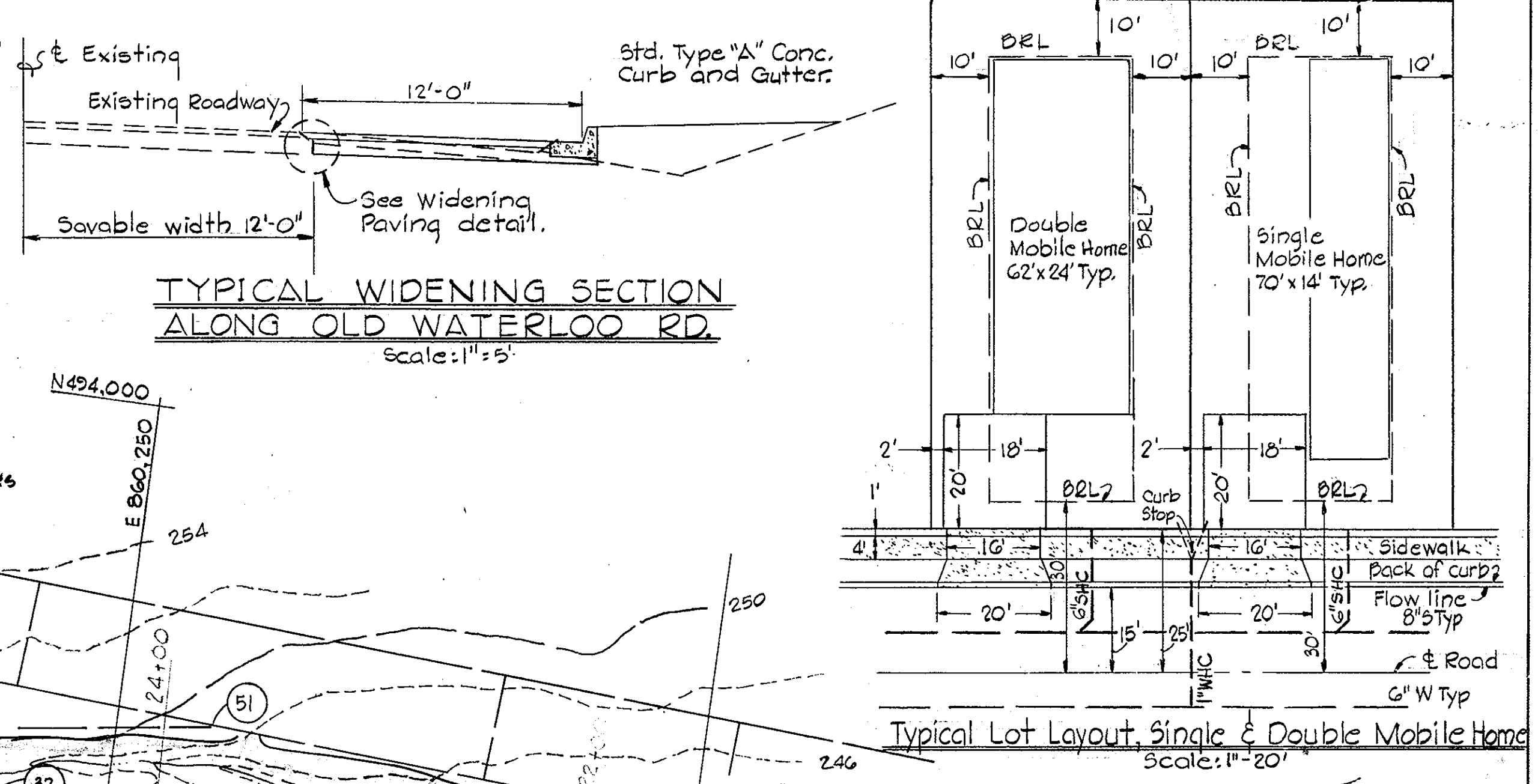
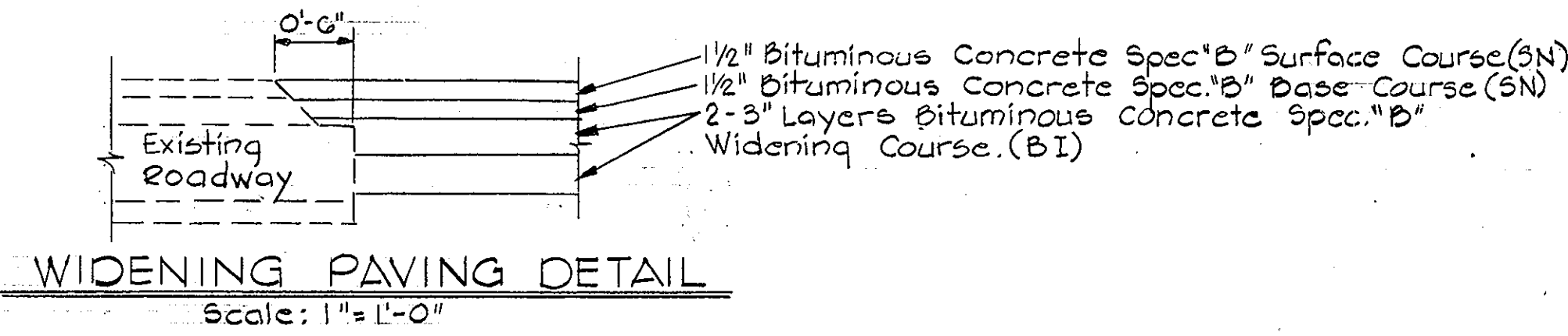
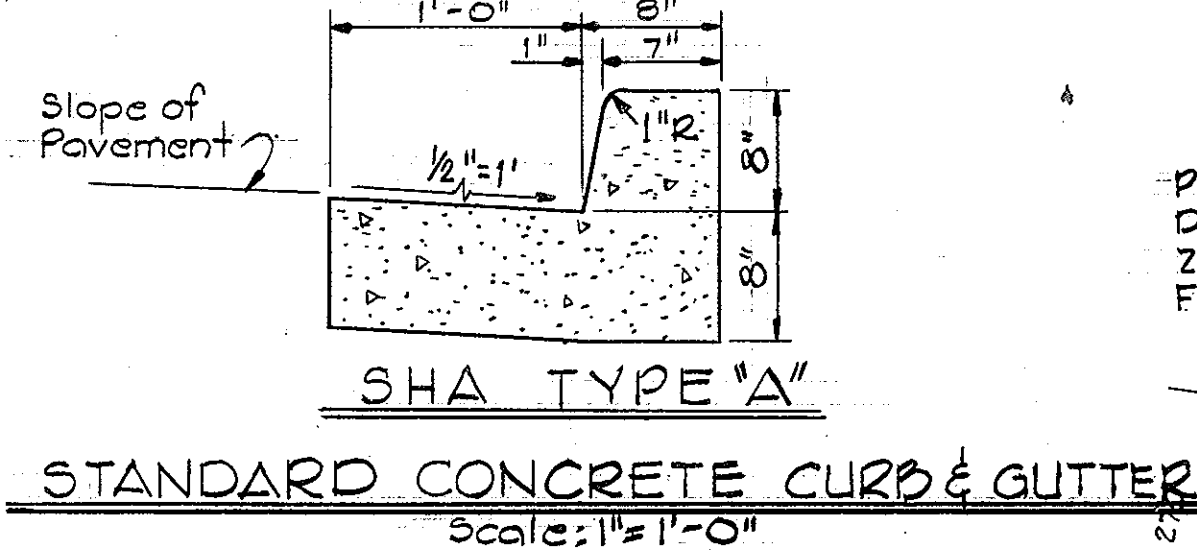
OWNER AND DEVELOPER
SECOND DEEP RUN ASSOCIATES
P.O. BOX 5992
BALTIMORE, MARYLAND 21208

VILLAGE OF DEEP RUN SECTION I, AREA I
LOTS A-1 TO A-67
A RESUBDIVISION OF PART OF PARCEL "A"
SITE DEVELOPMENT PLAN
1st ELECTION DISTRICT HOWARD COUNTY, MARYLAND
Scale: 1" = 50' DATE: 7-3-81

PLANTING NOTE:
Street trees will be adjusted as to location based on field conditions. (Grades, Parking, Etc)

- ⊗ Minimum 2 1/2" Caliper
- ⊗ Do not disturb or damage.

Code	Name	Size	Quant.
⊕	FRAXINUS LANCEOLATA-GREEN ASH	2 1/2" Cal.	19
⊕	PINUS STROBUS-WHITE PINE	8-10"	14
⊕	PINUS THUNBERGII-JAPANESE BLACK PINE	8-10"	8
⊕	PRUNUS SARGENTI-SARGENT CHERRY	2 1/2" Cal.	7
⊕	QUERCUS PALUSTRIS-PIN OAK	2 1/2" Cal.	40
⊕	EXISTING TREES (EVERGREENS)		60
⊕	ACERRUBRUM-RED MAPLE	2 1/2" Cal.	35
⊕	LIQUIDAMBER STYRACIFLUA-SWEETGUM	2 1/2" Cal.	17
* PLATANUS ORIENTALIS-PLANE TREE (ALTERNATE)			



APPROVED
DIVISION OF LAND DEVELOPMENT &
ZONING ADMINISTRATION
HOWARD COUNTY, MARYLAND
DATE 6-24-81
JFD

CERTIFICATION BY THE DEVELOPER
"I certify that all development and/or construction will be done according to this plan of development and plan of Erosion and Sediment Control, and I also authorize periodic on-site inspection by the Howard Soil Conservation District or their authorized agents, as are deemed necessary."
Signature of Developer: *John J. Olexy* Date: 6/22/81

CERTIFICATION BY THE ENGINEER
"I certify that this plan for Erosion and sediment control represents a practical and workable plan based on my personal knowledge of the site conditions and that it was prepared in accordance with the requirements of the Howard Soil Conservation District."
Signature of Engineer: *John T. Michael* Date: 6/22/81

APPROVED: HOWARD COUNTY OFFICE OF PLANNING AND ZONING
PLANNING DIRECTOR: *John T. Michael* DATE: 7-9-81
ACTING CHIEF, DIVISION OF LAND. DEV. & ZONE. ADMIN. DATE: 7-9-81
APPROVED: FOR PUBLIC WATER, PUBLIC SEWERAGE AND STORM DRAINAGE SYSTEMS AND ROADS HO. CO. DEPT. OF PUBLIC WORKS.
DIRECTOR: *John T. Michael* DATE: 7-17-81
CHIEF, BUREAU OF ENGINEERING DATE: 7-7-81

APPROVED: THIS DEVELOPMENT PLAN IS APPROVED FOR SOIL EROSION AND SEDIMENT CONTROL BY THE HOWARD SOIL CONSERVATION DISTRICT.
HOWARD S.C.D. DATE: 7-1-81
U.S. SOIL CONSERVATION SERVICE DATE: 7-1-81
APPROVED: FOR PUBLIC WATER AND PUBLIC SEWERAGE SYSTEMS HOWARD COUNTY HEALTH DEPARTMENT.
COUNTY HEALTH OFFICER: *John J. Olexy* DATE: 7-8-81

OWNER AND DEVELOPER
SECOND DEEP RUN ASSOCIATES
P.O. BOX 5992
BALTIMORE, MARYLAND 21208

VILLAGE OF DEEP RUN SECTION I, AREA 1
LOTS A-1 TO A-67
A RESUBDIVISION OF PART OF PARCEL "A"
SITE DEVELOPMENT PLAN
1st ELECTION DISTRICT HOWARD COUNTY, MARYLAND
Scale: 1" = 50'
DATE: 5-8-81

WHITMAN, REQUARDT AND ASSOCIATES ENGINEERS
2315 SAINT PAUL STREET
BALTIMORE, MARYLAND 21218
Kenneth A. McCord
Registered Engineer
No. 1974