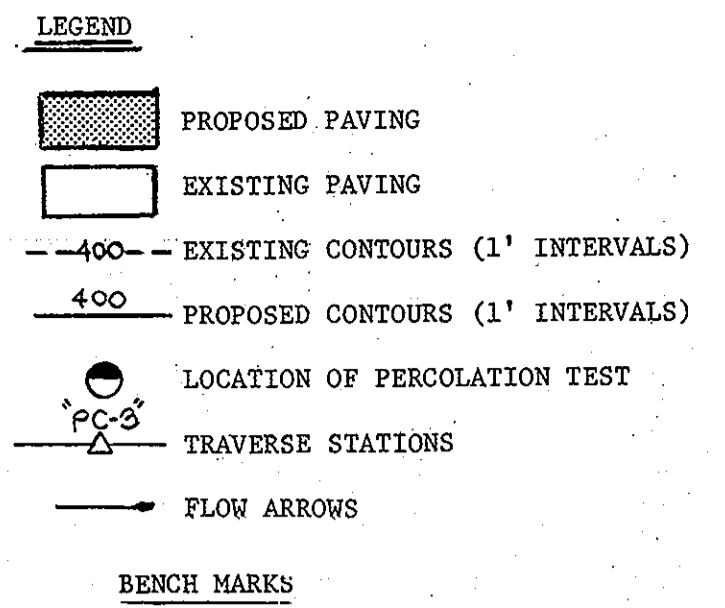


**GENERAL NOTES**

- TOTAL AREA OF TRACT ..... 6.64 ACRES  
PRESENT ZONING ..... R-20 = 3.39 ACRES  
NON CREDITED OPEN SPACE = 3.25 ACRES  
"SEE BA CASE NO. 79.37"  
"NEW TOWN" NON CREDITED OPEN SPACE  
FDP-180
- PARKING DATA**  
A. USE - RELIGIOUS FACILITIES  
B. NUMBER OF SEATS - 350  
C. NUMBER OF SPACES REQUIRED AT 1 SPACE/3 SEATS - 117 SPACES  
D. NUMBER OF SPACES PROVIDED - 117  
E. ALL PARKING SPACES TO BE 10' x 20'  
F. PARKING SPACES TO BE DELINEATED BY SOLID WHITE PAINTED LINES.  
G. ALL PAVING AND STORM DRAIN CONSTRUCTION SHALL BE IN ACCORDANCE WITH THE HOWARD COUNTY ROAD CONSTRUCTION CODE AND STANDARD SPECIFICATIONS.
- EXISTING UTILITIES SHOWN HEREON HAVE BEEN LOCATED FROM FIELD AND OFFICE INFORMATION. THE CONTRACTOR SHALL DETERMINE THE EXACT LOCATION OF EXISTING UTILITIES TO HIS OWN SATISFACTION BEFORE MAKING ANY CONNECTIONS THERETO OR EXCAVATING IN THE AREA THEREOF.
- THE CONTRACTOR SHALL NOTIFY "MISS UTILITY" AT 559-0100 A MINIMUM OF THREE DAYS PRIOR TO BEGINNING ANY CONSTRUCTION SHOWN HEREON.
- THE CONTRACTOR SHALL CONSTRUCT THE INDIVIDUAL SEWAGE DISPOSAL SYSTEM SHOWN HEREON IN ACCORDANCE WITH HOWARD COUNTY HEALTH DEPARTMENT SPECIFICATIONS.
- A GRADING PERMIT HAS BEEN ISSUED FOR THIS PROPERTY. SEE GP 80-22 ALL SEDIMENT AND EROSION CONTROL DEVICES CONSTRUCTED DURING SITE GRADING SHALL BE MAINTAINED THROUGHOUT THE CONSTRUCTION OF THE IMPROVEMENTS SHOWN HEREON.
- FINAL DEVELOPMENT PLAN, PHASE 180, RECORDED IN PLAT BOOK
- FINAL SUBDIVISION PLAT REFERENCE
- AREA WITHIN R-20 ZONING SUBJECT TO ZONING BOARD CASE NO.
- SEDIMENT AND EROSION CONTROL MEASURES SHALL BE IMPLEMENTED IN ACCORDANCE WITH GP 80-22.
- COVERAGE**  
A. TOTAL AREA R-20 NT  
3.39 Ac. 3.25 Ac.  
B. MAXIMUM LOT  
C. COVERAGE-STRUCTURES 30% 10%  
D. EXIST. BLDG. 4%  
E. PROP. ADDITION TO BUILDING 2.2% 1.1%  
TOTAL BLDG. COVERAGE 6.2% 1.1%  
F. EXIST. PAVING 22.3%  
G. PROP. PAVING 6.5% 7.3%  
TOTAL PAVING COVERAGE 28.8% 7.3%  
H. NO EXTERIOR LIGHTING PROPOSED.



**B.M. ELEV.**

"P.C.-1" 393.51  
3/4" REBAR SET 41.5"± SOUTHWEST OF CENTERLINE OF RTE. 108 AND 357'± SOUTHEAST OF CENTERLINE OF ENTRANCE TO FIRST PRESBYTERIAN CHURCH

"P.C.-3" 390.05  
P.K. NAIL SET IN MACADAM PARKING LOT

**REVISION**

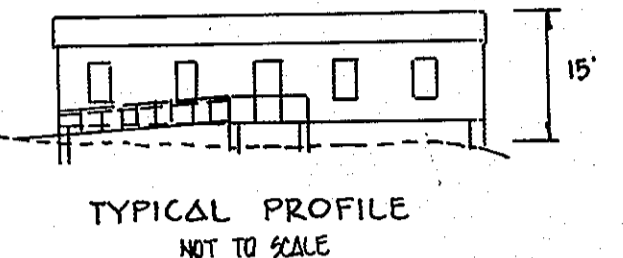
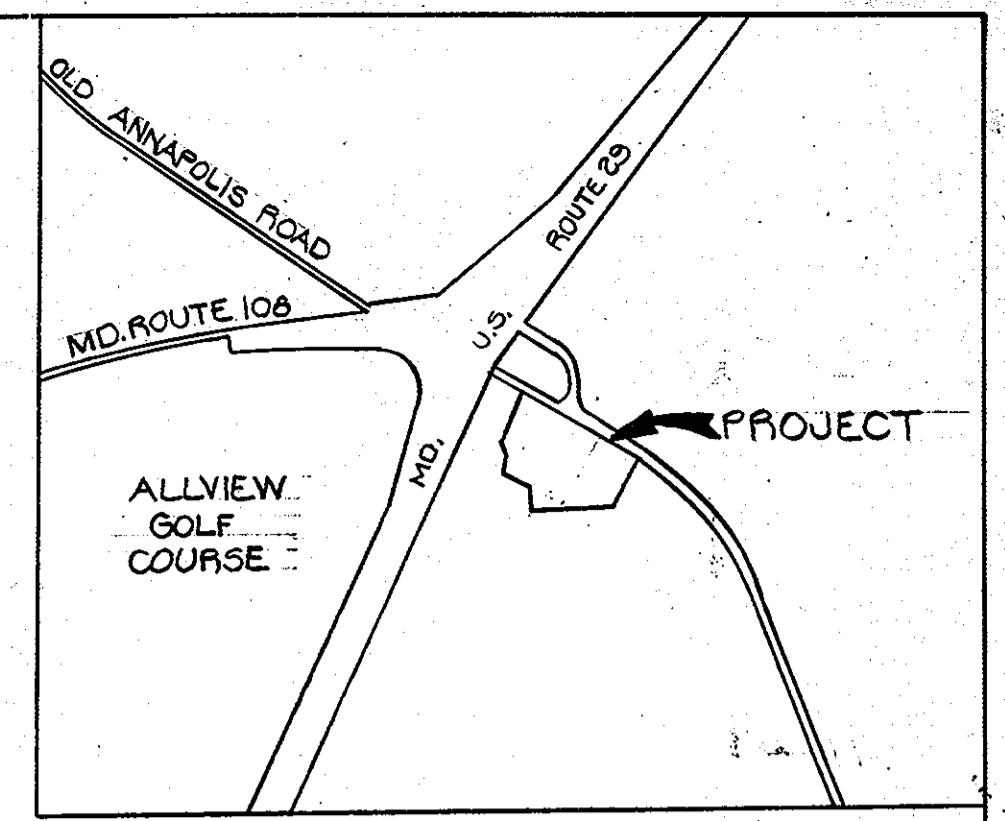
DATE	NUMBER	DESCRIPTION
5-27-80	1	ADD TRAILER AND SHED

Review for Howard County Soil Conservation District and meets technical requirements.

*James M. Hahn* 8-15-80  
U.S. Soil Conservation Service Date

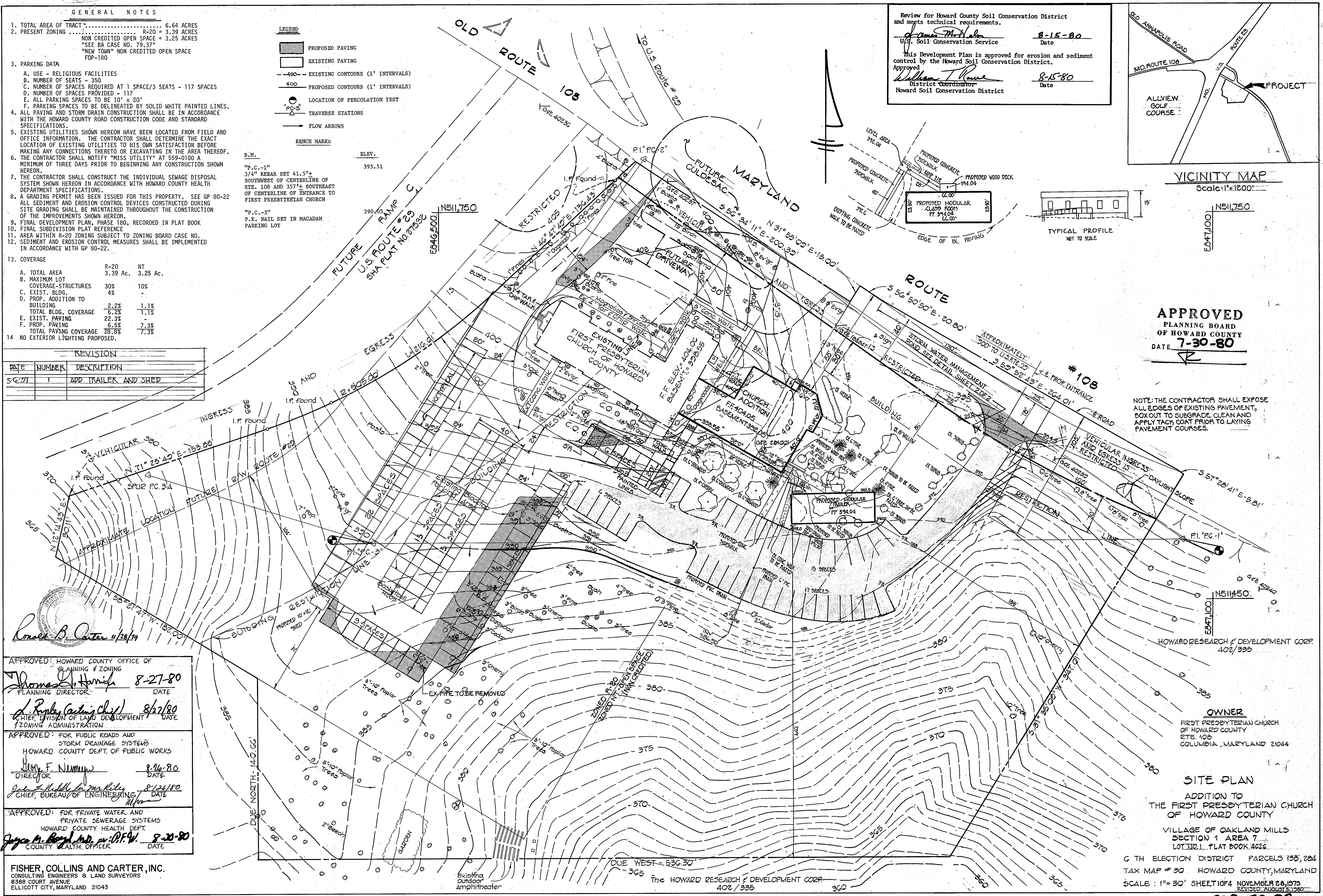
This Development Plan is approved for erosion and sediment control by the Howard Soil Conservation District.

*William T. Rowe* 8-15-80  
District Coordinator Date  
Howard Soil Conservation District



**APPROVED**  
PLANNING BOARD  
OF HOWARD COUNTY  
DATE 7-30-80

NOTE: THE CONTRACTOR SHALL EXPOSE ALL EDGES OF EXISTING PAVEMENT, BOX OUT TO SUBGRADE, CLEAN AND APPLY TACK COAT PRIOR TO LAYING PAVEMENT COURSES.



*Ronald B. Carter* 11/28/79

APPROVED: HOWARD COUNTY OFFICE OF PLANNING & ZONING  
*Thomas D. Hamish* 8-27-80  
PLANNING DIRECTOR DATE

APPROVED: DIVISION OF LAND DEVELOPMENT & ZONING ADMINISTRATION  
*A. R. R. (Carter's Chief)* 8/27/80  
CHIEF, DIVISION OF LAND DEVELOPMENT & ZONING ADMINISTRATION DATE

APPROVED: FOR PUBLIC ROADS AND STORM DRAINAGE SYSTEMS  
HOWARD COUNTY DEPT. OF PUBLIC WORKS  
*John F. Nimmey* 8-26-80  
DIRECTOR DATE

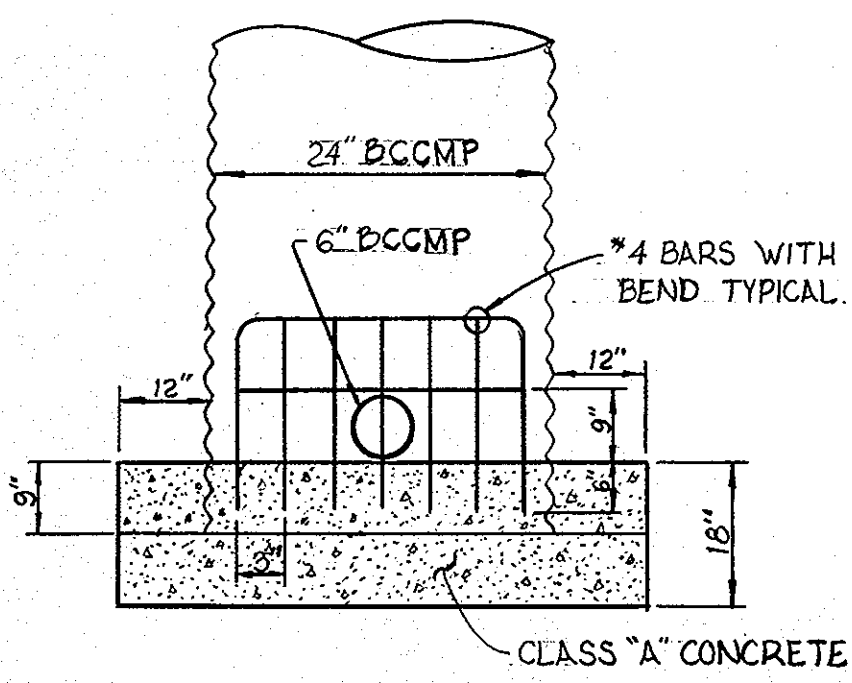
APPROVED: FOR PRIVATE WATER AND PRIVATE SEWERAGE SYSTEMS  
HOWARD COUNTY HEALTH DEPT.  
*John M. Boyd, MD. or P.F.W.* 8-20-80  
COUNTY HEALTH OFFICER DATE

**FISHER, COLLINS AND CARTER, INC.**  
CONSULTING ENGINEERS & LAND SURVEYORS  
8388 COURT AVENUE  
ELLICOTT CITY, MARYLAND 21043

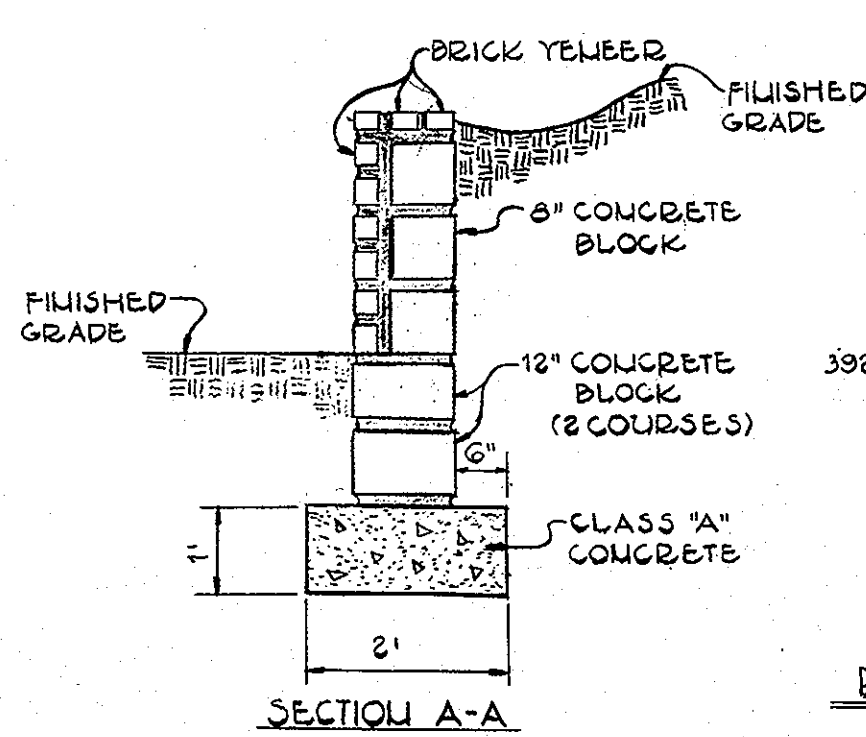
**OWNER**  
FIRST PRESBYTERIAN CHURCH  
OF HOWARD COUNTY  
RTE. 108  
COLUMBIA, MARYLAND 21044

**SITE PLAN**  
ADDITION TO  
THE FIRST PRESBYTERIAN CHURCH  
OF HOWARD COUNTY  
VILLAGE OF OAKLAND MILLS  
SECTION 1 AREA 7  
LOT 102.1 PLAT BOOK 2626  
G TH ELECTION DISTRICT PARCELS 135, 284  
TAX MAP # 30 HOWARD COUNTY, MARYLAND  
SCALE: 1" = 30' SHEET 10F4 NOVEMBER 28, 1975  
REVISED AUGUST 5, 1980

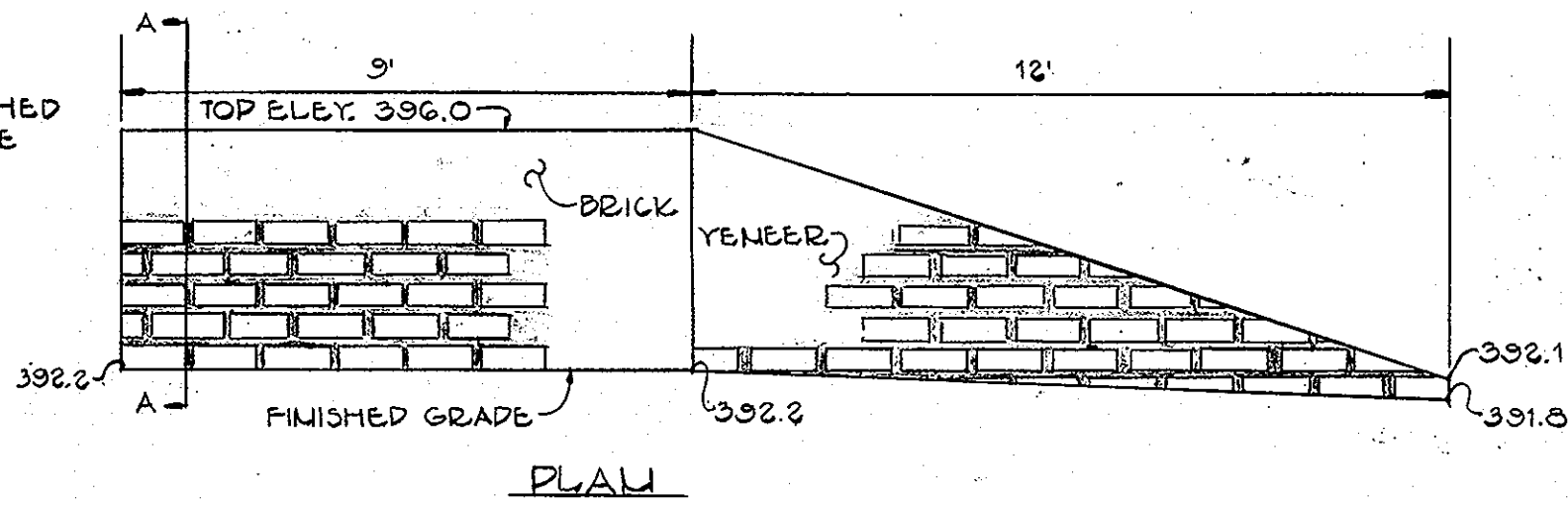




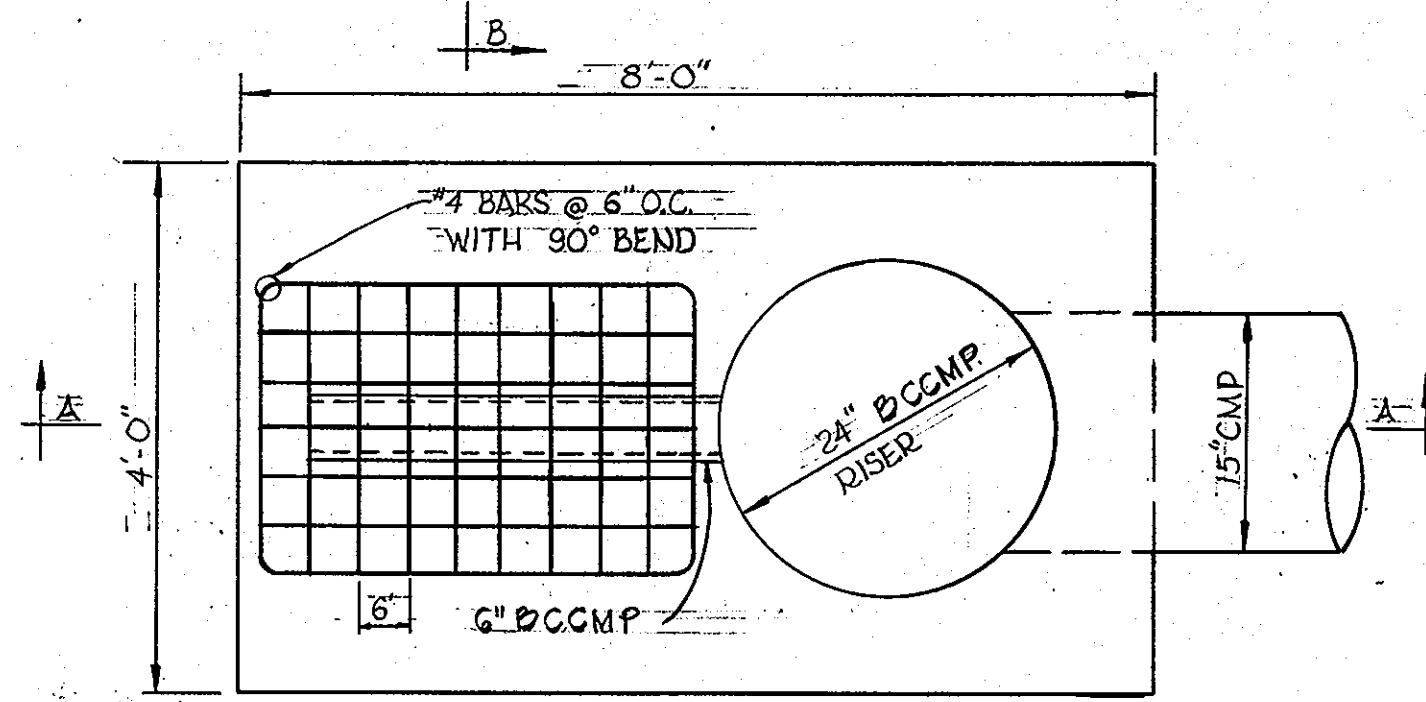
SECTION B-B



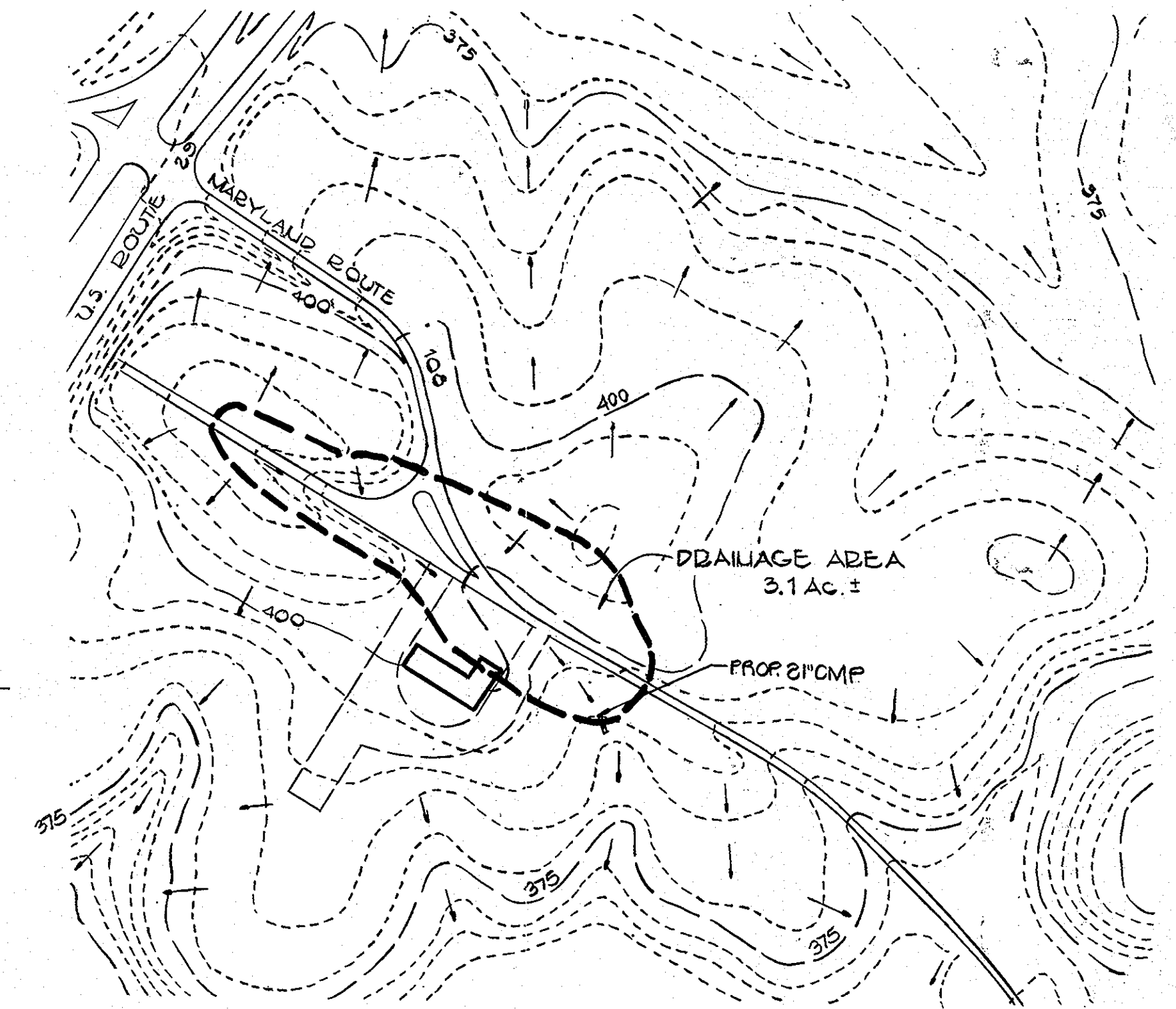
SECTION A-A



BRICK DETAILING WALL  
DETAIL  
NO SCALE

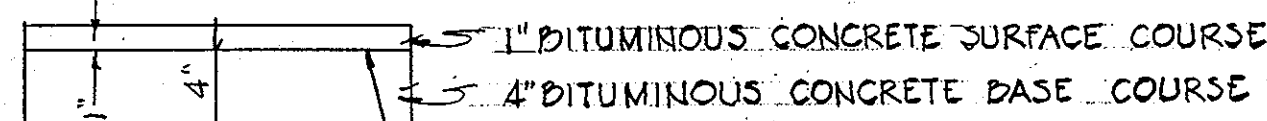


PLAN



DRAINAGE AREA MAP  
SCALE 1" = 200'

ALL MATERIALS AND CONSTRUCTION SHALL BE IN ACCORDANCE WITH THE HOWARD COUNTY ROAD CONSTRUCTION CODE & STANDARD SPECIFICATIONS

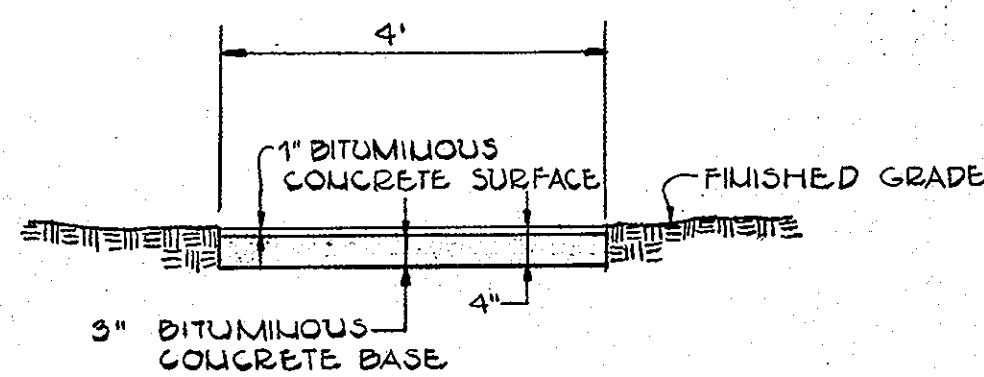


PAVING SECTION DETAIL  
NO SCALE

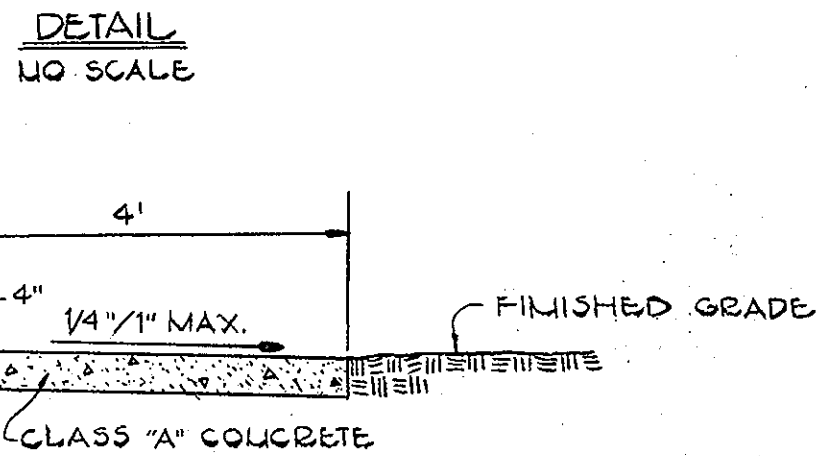
BASE WILL BE PRIMED IN ACCORDANCE WITH SECTION C-30-3 OF THE HOWARD COUNTY ROAD CONSTRUCTION CODE AND STANDARD SPECIFICATIONS.

TACK COAT IN ACCORDANCE WITH SECTION C-31-4 OF THE HOWARD COUNTY ROAD CONSTRUCTION CODE AND STANDARD SPECIFICATIONS.

PAVING SECTION DRAWING D-117 PAGE 165g.



BITUMINOUS CONCRETE WALK  
DETAIL  
NO SCALE



CONCRETE WALK DETAIL  
NO SCALE

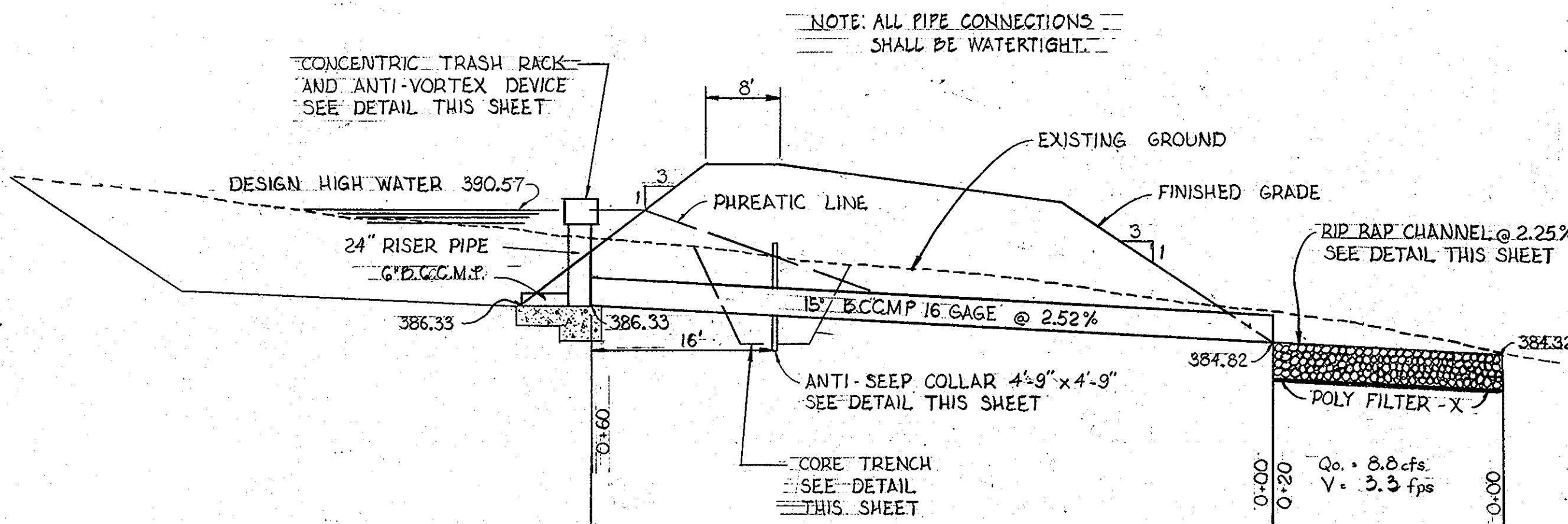
APPROVED FOR PRIVATE WATER AND PRIVATE SEWERAGE SYSTEMS  
HOWARD COUNTY HEALTH DEPT.  
COUNTY HEALTH OFFICER  
DATE 8-27-80

APPROVED HOWARD COUNTY OFFICE OF PLANNING AND ZONING  
PLANNING DIRECTOR  
DATE 8-27-80

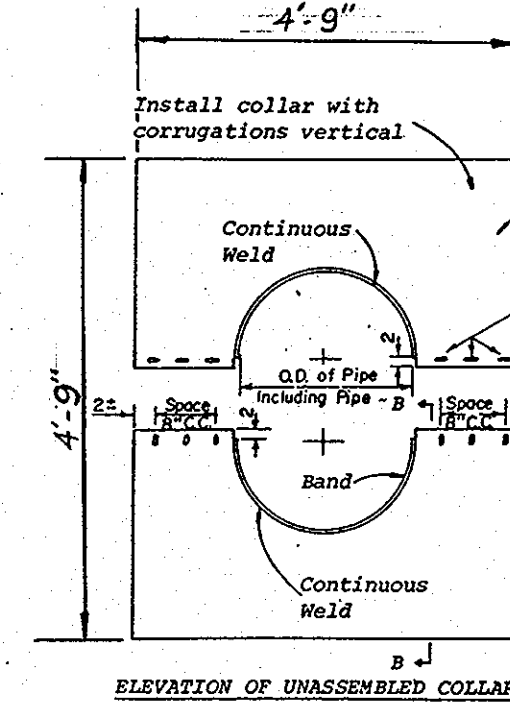
APPROVED FOR PUBLIC ROADS AND STORM DRAINAGE SYSTEMS  
HOWARD COUNTY DEPT. OF PUBLIC WORKS  
DIRECTOR  
DATE 8-26-80

CHIEF, DIVISION OF LAND DEVELOPMENT AND ZONING ADMINISTRATION  
DATE 8/27/80

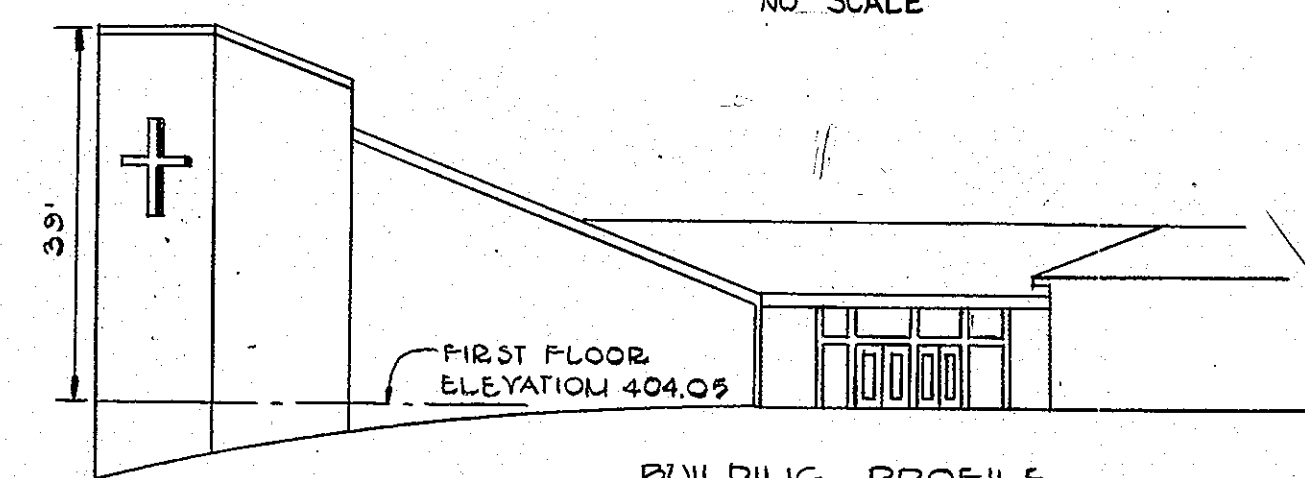
CHIEF, BUREAU OF ENGINEERING  
DATE 8/26/80



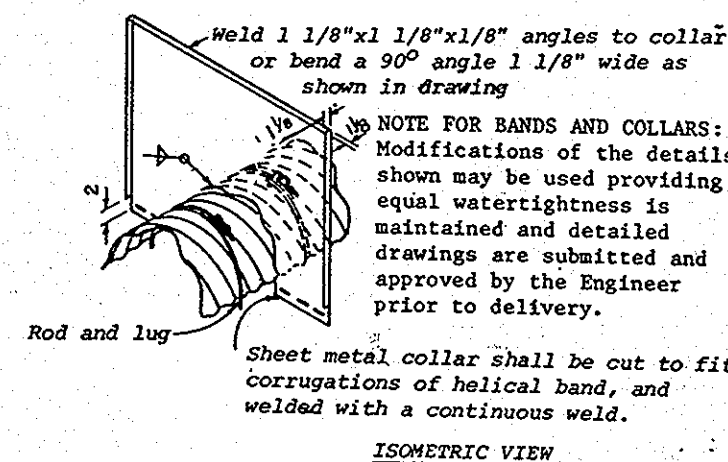
PROFILE  
SCALE 1" = 10' HOR.  
1" = 5' VERT.



ANTI-SEEP COLLAR DETAIL  
NO SCALE

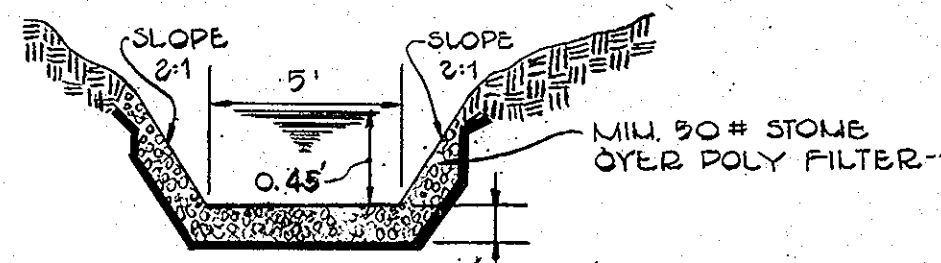


BUILDING PROFILE  
NO SCALE



NOTE FOR BANDS AND COLLARS: Modifications of the details shown may be used providing equal watertightness is maintained and detailed drawings are submitted and approved by the Engineer prior to delivery.

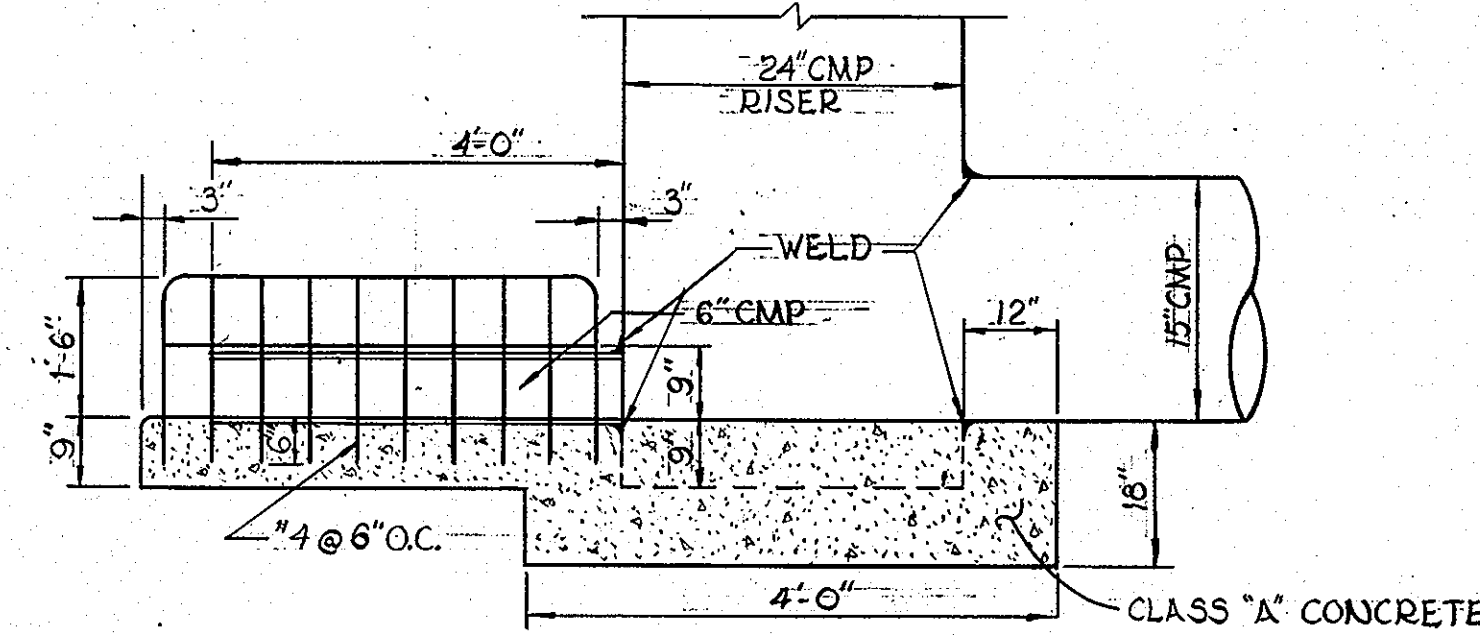
Sheet metal collar shall be cut to fit corrugations of helical band, and welded with a continuous weld.



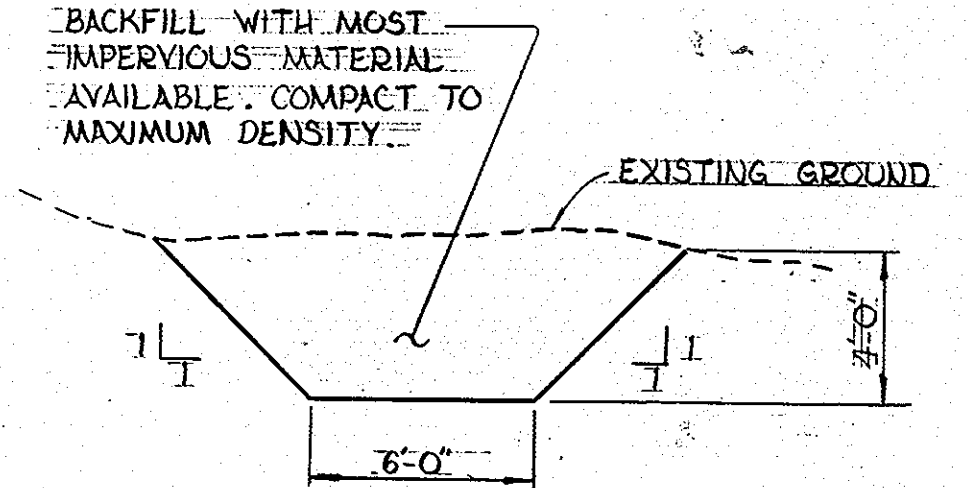
RIP RAP CHANNEL  
DETAIL  
NO SCALE

$A = 2.66'$   
 $B = 7.0'$   
 $C = 0.20'$   
 $D = 2.523'$   
 $E = 2.25'$   
 $F = 0.1509'$

$Y = 1.402 \times 2 \frac{2}{3} \times 3 \frac{1}{2}$   
 $Z = 42.43 \times 0.50 \times 0.1500 = 3.3$  fps  
 $Q = A \times Y$   
 $2.66 \times 3.3 = 8.8$  cfs  
 $\eta = 0.035$



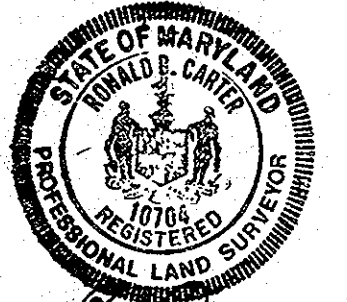
SECTION A-A



CORE TRENCH DETAIL  
NO SCALE

STORM DRAIN PROFILES AND DETAILS  
ADDITION TO  
THE FIRST PRESBYTERIAN CHURCH  
OF HOWARD COUNTY

APPROVED  
PLANNING BOARD  
OF HOWARD COUNTY  
DATE 7-30-80



Ronald D. Carter 11/28/79

FISHER, COLLINS AND CARTER  
CONSULTING ENGINEERS & LAND SURVEYORS  
6360 COURT AVE. LUCIE  
ELLICOTT CITY, MARYLAND 21043

8-12-80

VILLAGE OF OAKLAND MILLS SECTION 1, AREA 7, LOT NO. 1 PLAT BOOK 462G  
6TH ELECTION DISTRICT PARCELS 138, 284  
TAX MAP #30 HOWARD COUNTY, MARYLAND  
SCALE: AS SHOWN DECEMBER 14, 1979  
SHEET 2 OF 4 REVISED AUGUST 5, 1980

SDP 80-97



**ENGINEER'S CERTIFICATE**  
 I CERTIFY THAT THIS PLAN FOR EROSION AND SEDIMENT CONTROL REPRESENTS A PRACTICAL AND WORKABLE PLAN BASED ON MY PERSONAL KNOWLEDGE OF THE SITE CONDITIONS AND THAT IT WAS PREPARED IN ACCORDANCE WITH THE REQUIREMENTS OF THE HOWARD SOIL CONSERVATION DISTRICT.

*Earl D. Collins* 10/19/79  
 EARL D. COLLINS P.E. REG. NO. 9753 DATE

**DEVELOPER'S CERTIFICATE**  
 I CERTIFY THAT ALL DEVELOPMENT AND OR CONSTRUCTION WILL BE DONE ACCORDING TO THIS PLAN OF DEVELOPMENT AND PLAN FOR EROSION AND SEDIMENT CONTROL, AND I ALSO AUTHORIZE PERIODIC ON-SITE INSPECTION BY THE HOWARD SOIL CONSERVATION DISTRICT OR THEIR AUTHORIZED AGENTS, AS ARE DEEMED NECESSARY. DEVIATION FROM THIS PLAN WILL NOT BE MADE UNLESS AUTHORIZED BY THE HOWARD SOIL CONSERVATION DISTRICT.

*Lytle B. Buck* 10/27/79  
 DATE

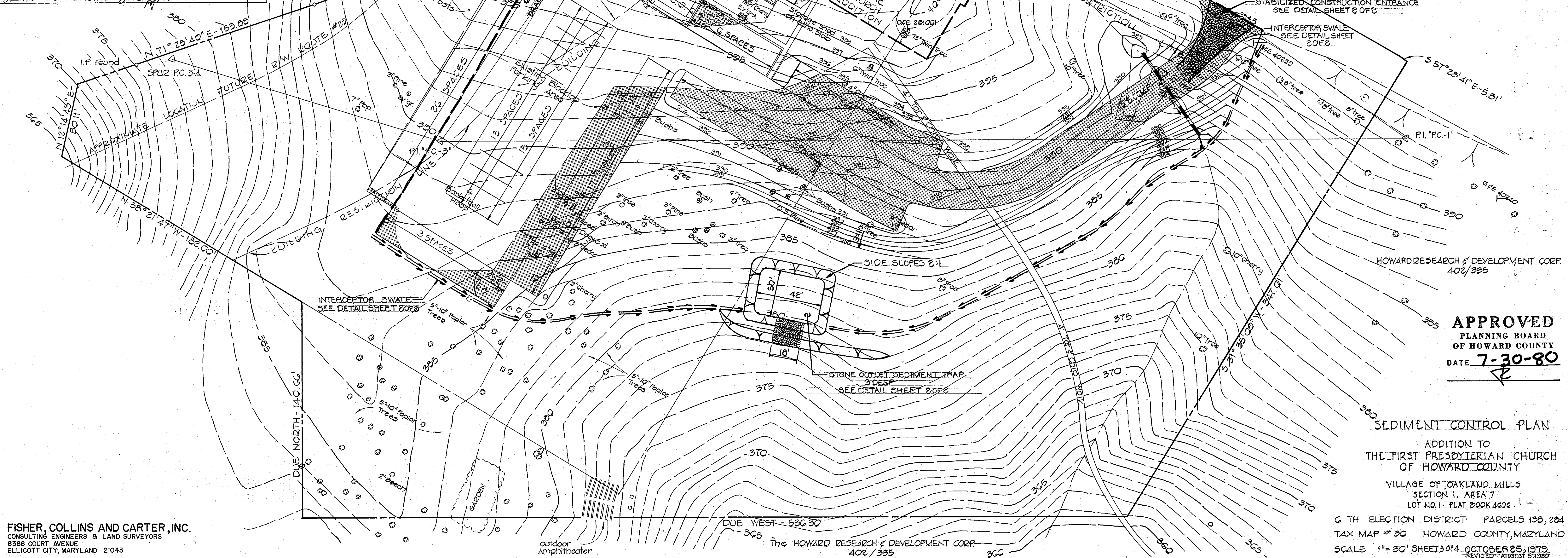
REVIEWED FOR HOWARD COUNTY SOIL CONSERVATION DISTRICT AND MEETS TECHNICAL REQUIREMENTS.  
*James M. Nelson* 8-15-80  
 U.S. SOIL CONSERVATION SERVICE DATE

THIS DEVELOPMENT PLAN IS APPROVED FOR EROSION AND SEDIMENT CONTROL BY THE HOWARD SOIL CONSERVATION DISTRICT.  
*William J. Rouse* 8-15-80  
 DISTRICT COORDINATOR DATE  
 HOWARD SOIL CONSERVATION DISTRICT

APPROVED FOR PRIVATE WATER AND PRIVATE SEWERAGE SYSTEMS - HOWARD COUNTY HEALTH DEPARTMENT.  
*James M. Boyd, M.D.* 8-21-80  
 COUNTY HEALTH OFFICER DATE

APPROVED: HOWARD COUNTY OFFICE OF PLANNING & ZONING  
*Thomas J. Harrison* 8-27-80  
 PLANNING DIRECTOR DATE  
*J. Kirkley* 8/28/80  
 CHIEF, DIVISION OF LAND DEVELOPMENT

APPROVED FOR PUBLIC ROADS AND STORM DRAINAGE SYSTEMS, HOWARD COUNTY DEPARTMENT OF PUBLIC WORKS.  
*Way F. Mumby* 8-21-80  
 DIRECTOR DATE  
*John A. Little* 8/26/80  
 CHIEF, BUREAU OF ENGINEERING DATE



NOTE: SHEET 3 AND 4 OF 4 FOR SEDIMENT CONTROL PURPOSES ONLY AND IS NOT TO BE USED FOR CONSTRUCTION OF SITE IMPROVEMENTS.

SEDIMENT TRAP COMPUTATIONS  
 DRAINAGE AREA: 2.9 AC.  
 VOLUME REQUIRED 2.9 AC x 7.153 CU YDS  
 VOLUME PROVIDED: 205 CU YDS

**APPROVED**  
 PLANNING BOARD  
 OF HOWARD COUNTY  
 DATE 7-30-80

SEDIMENT CONTROL PLAN  
 ADDITION TO  
 THE FIRST PRESBYTERIAN CHURCH  
 OF HOWARD COUNTY  
 VILLAGE OF OAKLAND MILLS  
 SECTION 1, AREA 7  
 LOT NO. 1 PLAT BOOK 4626  
 G TH ELECTION DISTRICT PARCELS 150, 284  
 TAX MAP # 30 HOWARD COUNTY, MARYLAND  
 SCALE 1" = 30' SHEETS 014 OCTOBER 25, 1979  
 REVISED AUGUST 5, 1980

FISHER, COLLINS AND CARTER, INC.  
 CONSULTING ENGINEERS & LAND SURVEYORS  
 8308 COURT AVENUE  
 ELLICOTT CITY, MARYLAND 21043

SOP-80-974



**ENGINEER'S CERTIFICATE**  
 I CERTIFY THAT THIS PLAN FOR EROSION AND SEDIMENT CONTROL REPRESENTS A PRACTICAL AND WORKABLE PLAN BASED ON MY PERSONAL KNOWLEDGE OF THE SITE CONDITIONS AND THAT IT WAS PREPARED IN ACCORDANCE WITH THE REQUIREMENTS OF THE HOWARD SOIL CONSERVATION DISTRICT

*Earl D. Collins*  
 EARL D. COLLINS P.E. REG. NO. 97528 DATE 10/29/79

**DEVELOPER'S CERTIFICATE**  
 I CERTIFY THAT ALL DEVELOPMENT AND/OR CONSTRUCTION WILL BE DONE ACCORDING TO THIS PLAN OF DEVELOPMENT AND PLAN FOR EROSION AND SEDIMENT CONTROL AND I ALSO AUTHORIZE PERIODIC ON-SITE INSPECTION BY THE HOWARD SOIL CONSERVATION DISTRICT OR THEIR AUTHORIZED AGENTS, AS ARE DEEMED NECESSARY. DEVIATION FROM THIS PLAN WILL NOT BE MADE UNLESS AUTHORIZED BY THE HOWARD SOIL CONSERVATION DISTRICT

*Jyle B. Buck*  
 JYLE B. BUCK DATE 10/29/79

REVIEWED FOR HOWARD COUNTY SOIL CONSERVATION DISTRICT AND MEETS TECHNICAL REQUIREMENTS.  
*James M. Hahn*  
 JAMES M. HAHN P.E. REG. NO. 97528 DATE 8-15-80  
 U.S. SOIL CONSERVATION SERVICE

THIS DEVELOPMENT PLAN IS APPROVED FOR EROSION AND SEDIMENT CONTROL BY THE HOWARD SOIL CONSERVATION DISTRICT.  
*William T. Rame*  
 WILLIAM T. RAME DATE 8-15-80  
 DISTRICT ENGINEER HOWARD SOIL CONSERVATION DISTRICT

APPROVED FOR PRIVATE WATER AND PRIVATE SEWERAGE SYSTEMS: HOWARD COUNTY HEALTH DEPT.  
*Jesse A. Boyd, M.D., P.E.*  
 JESSE A. BOYD, M.D., P.E. DATE 8-21-80  
 COUNTY HEALTH OFFICER

APPROVED: HOWARD COUNTY OFFICE OF PLANNING AND ZONING.  
*Thomas J. Amis*  
 THOMAS J. AMIS DATE 8-27-80  
 PLANNING DIRECTOR

*D. Kyles*  
 D. KYLES DATE 8/27/80  
 CHIEF DIVISION OF LAND DEVELOPMENT

APPROVED FOR PUBLIC ROADS AND STORM DRAINAGE SYSTEMS: HOWARD COUNTY DEPT. OF PUBLIC WORKS.  
*Walter F. Neumayr*  
 WALTER F. NEUMAYR DATE 8-27-80  
 DIRECTOR

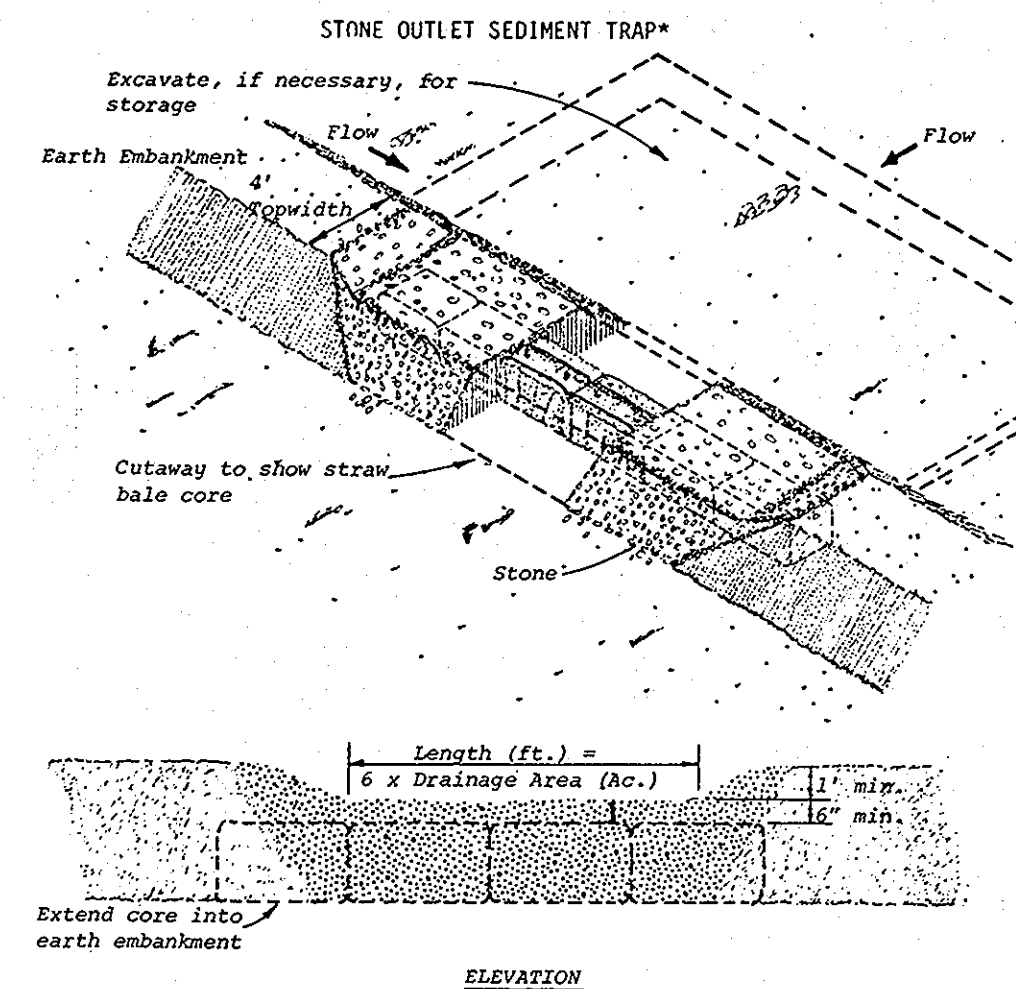
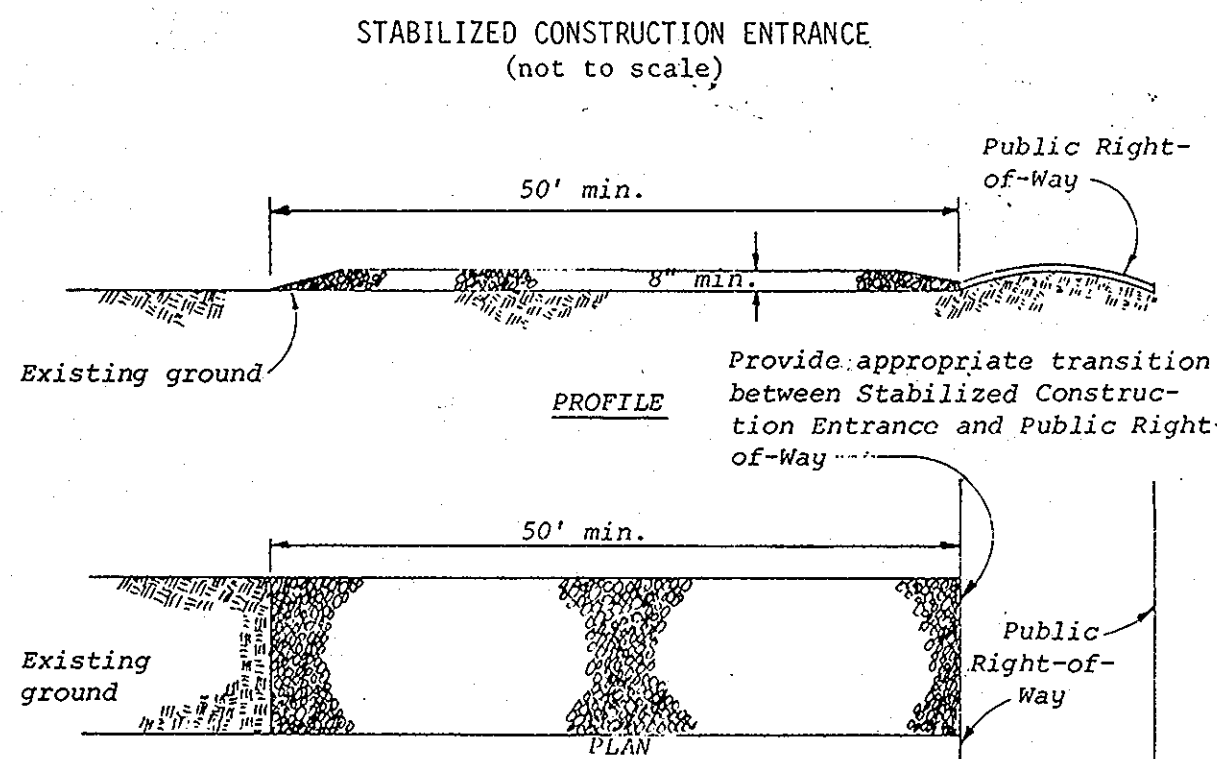
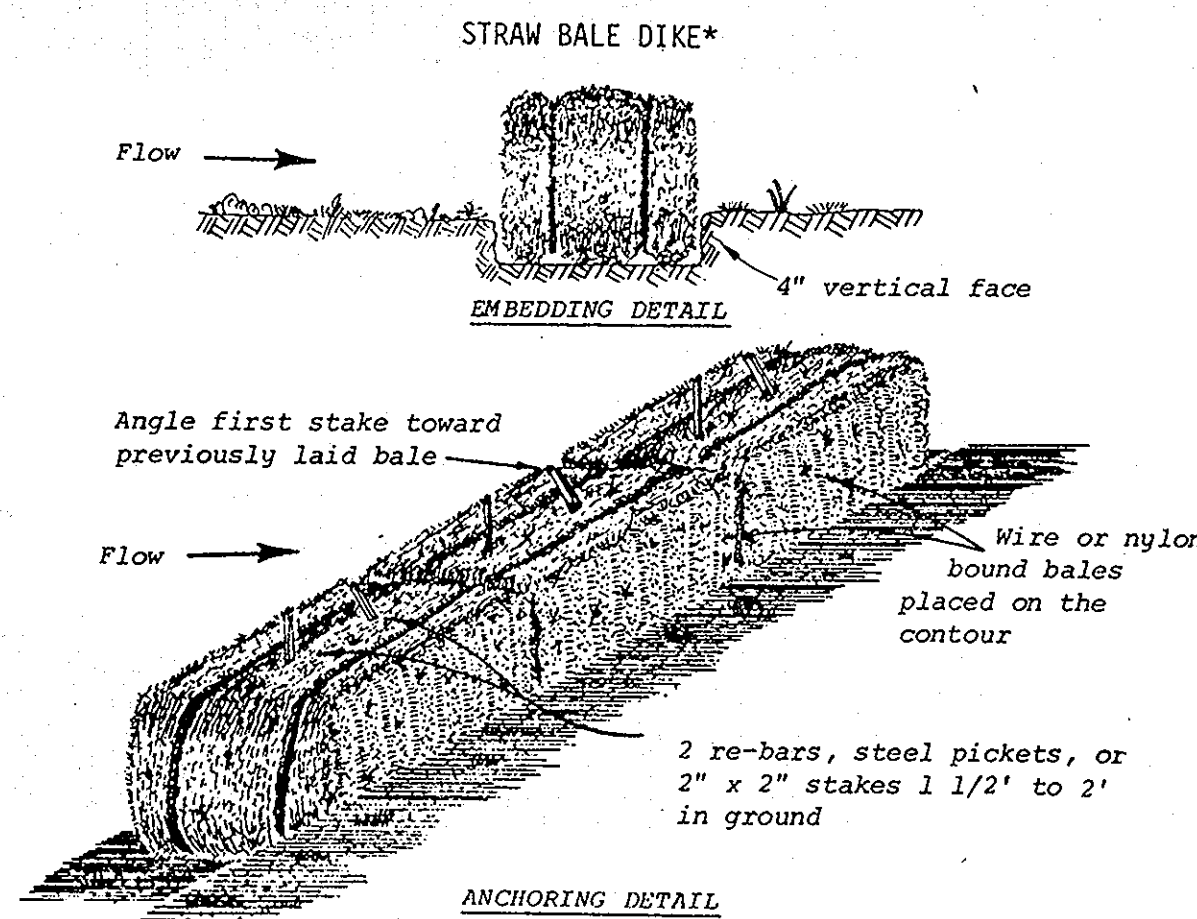
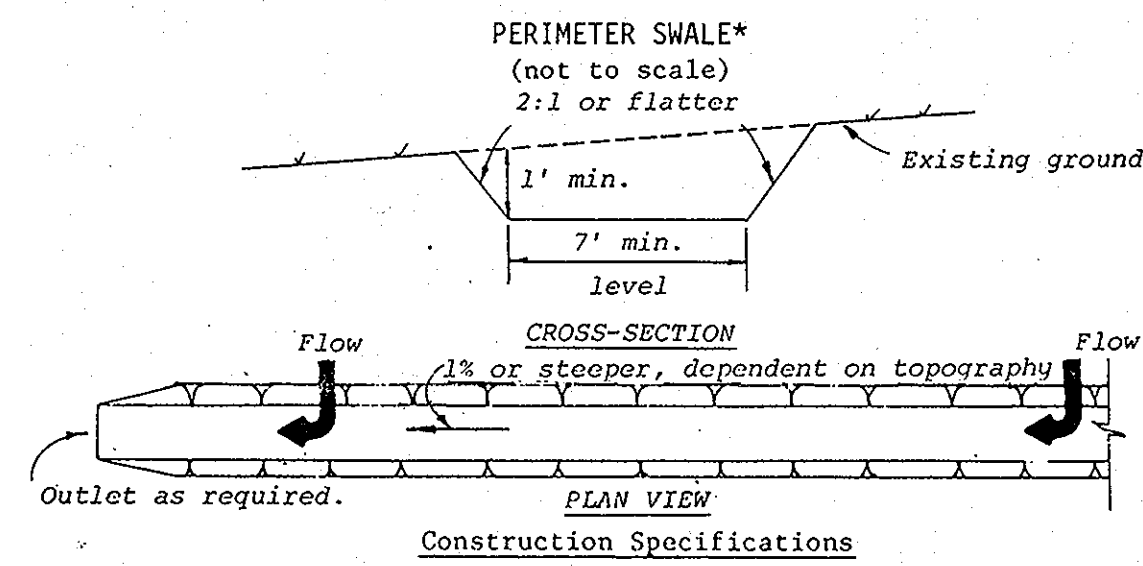
*John F. Hill*  
 JOHN F. HILL DATE 8/26/80  
 CHIEF, BUREAU OF ENGINEERING

**SEDIMENT CONTROL NOTES**

- Specifications for the Sediment Control Details shown hereon are included in the U.S.D.A. Soil Conservation Service "Standards and Specifications for Soil Erosion and Sediment Control in Developing Areas."
- The developer shall notify the Howard County Office of Inspections and Permits at least 24 hours prior to beginning any construction shown hereon (992-2433).
- Sediment control structures to be constructed prior to any on-site grading or disturbance to any existing surface material, and are to be stabilized as soon as constructed.
- All sediment control structures to remain in place until permission for their removal has been obtained from the Howard County Office of Inspection and Permits (992-2433).
- All graded areas not to be sodded shall be stabilized by seeding and mulching in accordance with the following:
  - Site Preparation
    - Harrow or disc in areas proposed to be seeded the following materials:
      - Pulverized limestone at 2 tons/acre.
      - Commercial fertilizer 10-10-10 at 3/4 tons/acre.
      - Super phosphate at 600 lbs./acre.
    - Seeding
      - Sow the following seed mixture at the rate of 200 lbs./acre with a mechanical spreader.
        - Temporary: Italian or Perennial Rye Grass
        - Permanent: 40% Marion Blue Grass, 40% South Dakota Blue Grass and 20% Penn Lawn Creeping Red Fescue.
      - The seeded area shall then be raked with a York Rake (a minimum of 2 passes) covered and compacted with Cultipacker or other approved method.
    - Mulching
      - Seeded areas shall be uniformly mulched immediately after seeding with unweathered small grain straw at the rate of 1-1/2 tons/acre.
      - Tie mulch down with liquid asphalt at 0.1 gal./s.y. or emulsified asphalt at 0.04 gal./s.y. or mulch netting.

**CONSTRUCTION SEQUENCE**

- Obtain Grading permit.
- Place stabilized construction entrance.
- Construct stone outlet sediment trap and interceptor swale.
- Stabilize trap and perimeter swale using temporary seeding. (See sediment control notes)
- Install straw bale dike.
- Install 15" CMP
- Grade parking area and entrance road to subgrade.
- Grade slope areas and stabilize with permanent seeding. (See sediment control notes)
- Lay paving course for parking area and entrance road.
- After graded areas have stabilized, remove perimeter swale, straw bale dike, and stone outlet sediment trap.
- Stabilize areas disturbed by removal of sediment control devices using permanent seeding.
- During construction, the Contractor shall inspect and provide necessary maintenance on the sediment and erosion control structures shown hereon on a regular basis, and after rainfall.
- The Contractor shall water seeded areas regularly and shall reseed any areas which do not show signs of germination within three weeks.



NOTE - Drawings show straw bales used for core. Bales are anchored as per Standard and Specifications for Straw Bale Dike. Other materials (e.g., timber or concrete block) may also be used for core. Firmly anchor all core material to ground.

**APPROVED**  
 PLANNING BOARD  
 OF HOWARD COUNTY  
 DATE 7-30-80