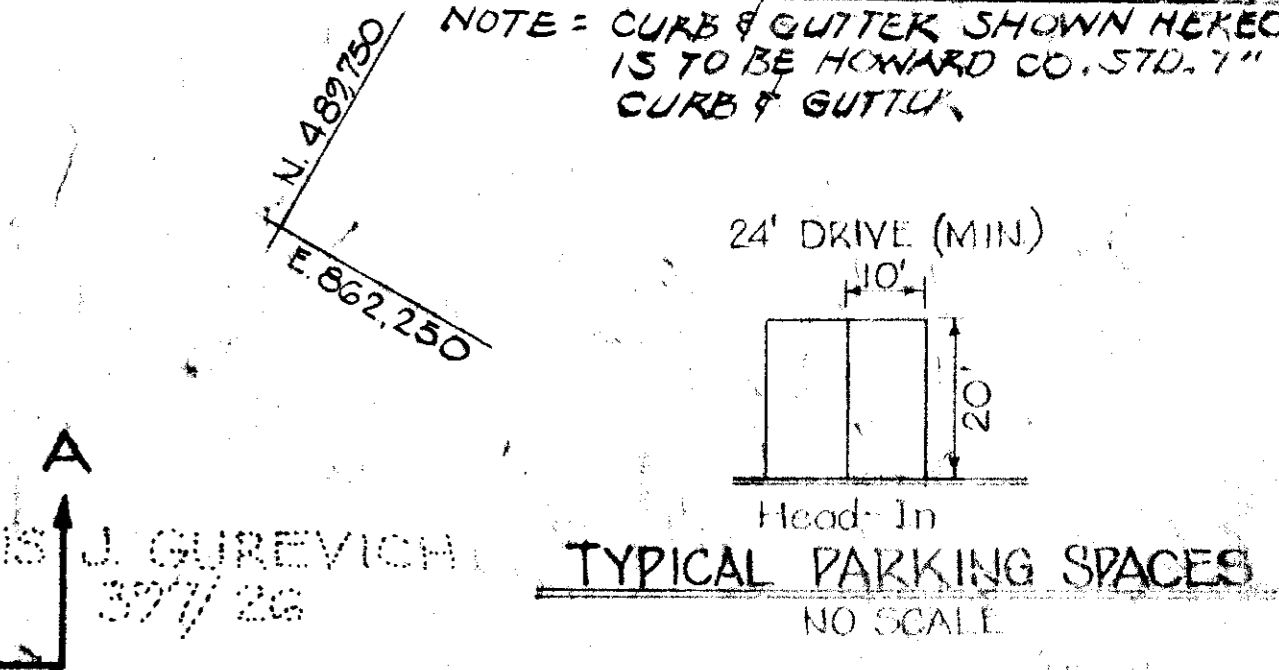
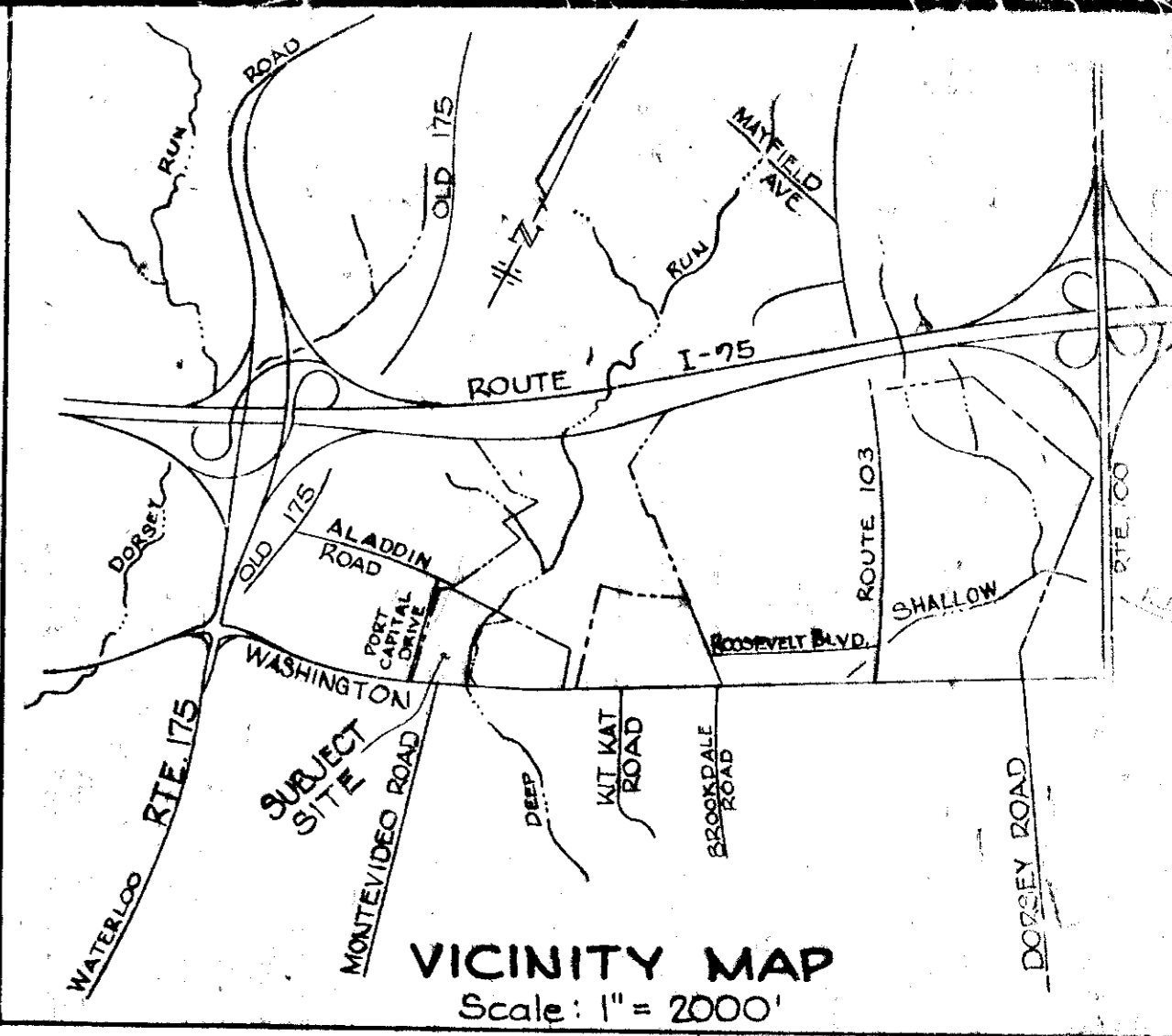


LIMIT OF WORK
SHEET NO. 25



LEGEND

- Ex. Contours --- 210 ---
- Prop. Contours --- 220 ---
- Note: 1) For Drainage Profiles See Sheet 3.
- 2) For General Notes See Sheet 2.
- 3) For Section A-A See Sheet 2.
- 4) No Fences, Walls or Signs to be Constructed.
- 5) Six Ft High White Pine Screening to be provided along ALADDIN ROAD.

THIS DEVELOPMENT PLAN IS APPROVED FOR SOIL EROSION AND SEDIMENT CONTROL BY THE HOWARD SOIL CONSERVATION DISTRICT.

William V. Rowe 8-29-79
HOWARD S.C.D. DATE

REVIEWED FOR HOWARD S.C.D. AND MEETS TECHNICAL REQUIREMENTS

Wendell Bundeth 8-24-79
SIGNATURE DATE
U.S. SOIL CONSERVATION SERVICE

APPROVED: HOWARD COUNTY OFFICE OF PLANNING AND ZONING
Thomas A. Hariafi 9-6-79
DIRECTOR DATE
Chief - DIVISION OF LAND DEVELOPMENT DATE

APPROVED FOR PUBLIC WATER PUBLIC SEWERAGE & STORM DRAINAGE SYSTEMS AND PUBLIC WORKS. HOWARD COUNTY DEPARTMENT OF PUBLIC WORKS.
Walter F. Nunnally 9-30-79
DIRECTOR DATE
W. O. Pickett 8-29-79
CHIEF - BUREAU OF ENGINEERING DATE

SITE DATA

| | |
|--|---------------|
| TOTAL AREA OF LOTS | 15.183 Ac ± |
| EXISTING ZONING | M-1 |
| TAX MAP NO. | 43 |
| TOTAL PARKING SPACES @ 2 EMPLOYEES/SPACE | 78 |
| TOTAL FLOOR AREA | 101,573 |
| TOTAL SALES AREA | 153 |
| TOTAL AVERAGE DAILY TRAFFIC | 250 |
| NO. OF EMPLOYEES | None |
| Proposed Use of Buildings | 918 |
| | 157 Warehouse |

Note: All Driveways and Parking facilities to be Private.

PREPARED BY HUDKINS ASSOC. INC. 400 E JOPPA RD. TOWSON MD 21284

NOTE: THIS IS A REVISION TO S.D.P. 74-124 TO REFLECT THE ADDITION OF A 30' WIDE LANDSCAPE AREA ADJACENT TO ALADDIN ROAD AND THE REMOVAL OF PARKING SPACES IN THAT AREA.

DEVELOPER
I CERTIFY THAT ALL DEVELOPMENT AND/OR CONSTRUCTION WILL BE DONE ACCORDING TO THE PLAN OF DEVELOPMENT AND PLAN FOR EROSION AND SEDIMENT CONTROL AND I AUTHORIZE PERIODIC ON SITE INSPECTION ON THE HOWARD COUNTY SOIL CONSERVATION DIST. OR THEIR AUTHORIZED AGENTS AS ARE DEEMED NECESSARY. DEVIATION FROM THIS PLAN WILL NOT BE MADE UNLESS AUTHORIZED BY THE HOWARD COUNTY SOIL CONSERVATION DISTRICT.
Howard S. Chereby 6-18-79

ENGINEER
I CERTIFY THAT THE PLAN FOR EROSION AND SEDIMENT CONTROL REPRESENTS A PRACTICAL AND WORKABLE PLAN BASED ON MY PROFESSIONAL KNOWLEDGE OF THE SITE CONDITIONS AND THAT IT WAS PREPARED IN ACCORDANCE WITH THE REQUIREMENTS OF THE HOWARD COUNTY SOIL CONSERVATION DISTRICT.
Howard W. Kulschier
HOWARD W. KULSCHIER



APPROVED FOR PUBLIC WATER AND PUBLIC SEWERAGE SYSTEMS-HOWARD CO. HEALTH DEPT.
Joyce M. Boyd 9-4-79
COUNTY HEALTH OFFICER DATE

REVISED FINAL SITE DEVELOPMENT PLAN
DWG NO. 10(FL)
PORT CAPITAL CENTER

PLAT NO. 3545
ELECT. DIST. NO. 1 HOWARD CO. MD
SCALE: 1" = 50' JUNE 15, 1979
Tax Map No. 43