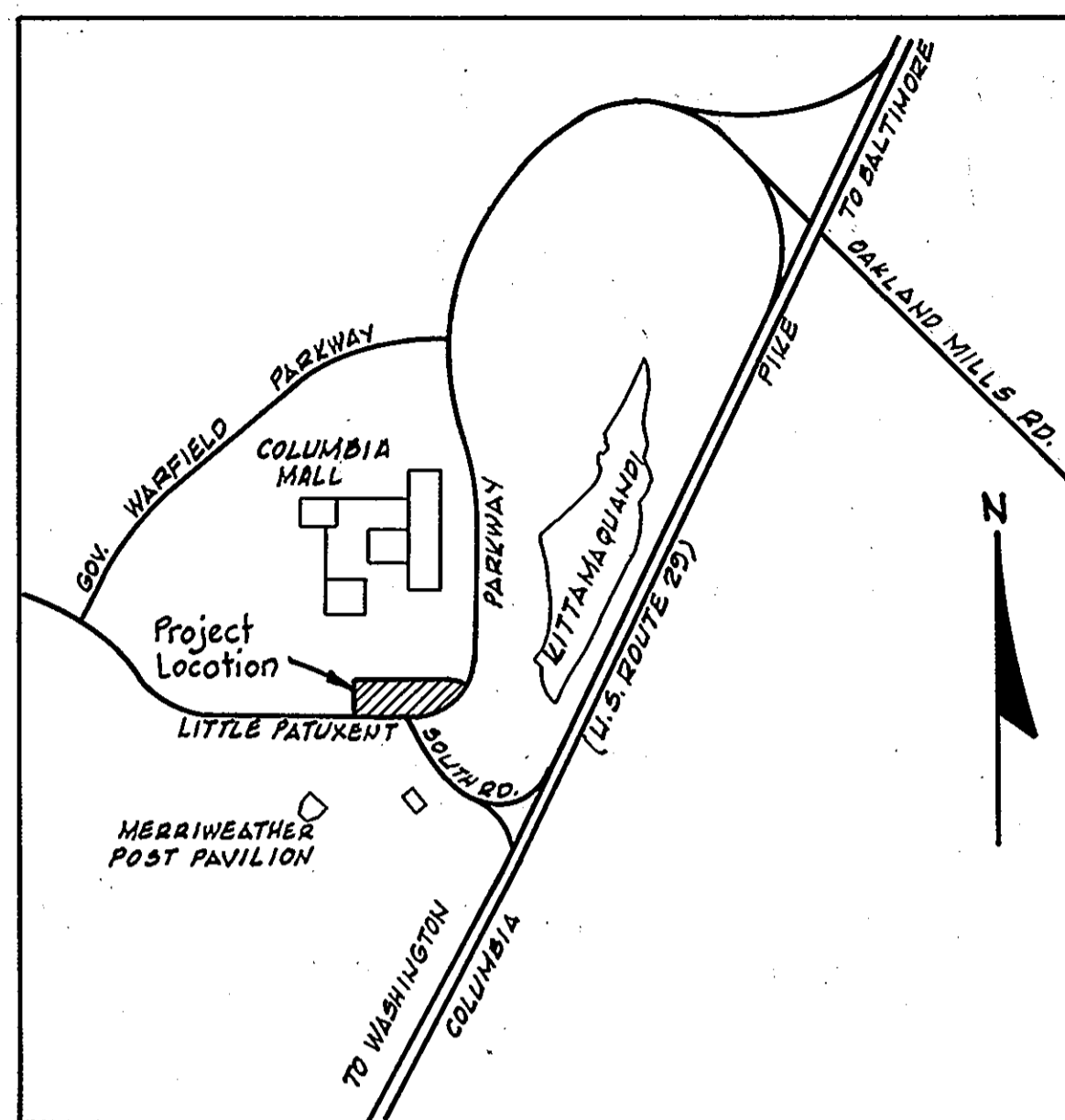


**GENERAL NOTES**

1. Topography taken from field-run topo prepared by Hudkins Associates.
2. Recording reference for Parcel 'A' is Plat Book 23 Folio 12.
3. See Architectural Plans for details of proposed office building.
4. All materials and construction shall be in accordance with the Howard County Road Construction Code and Specification.
5. Public Water and Sewer facilities to be utilized.
6. Any damage to the County owned right-of-way or paving shall be corrected at the Developers expense.
7. Grades have been established to insure positive drainage.
8. Sidewalks shall be scored or otherwise textured to indicate to blind persons the location of doors at building.



**VICINITY MAP**  
SCALE: 1"=2,000'

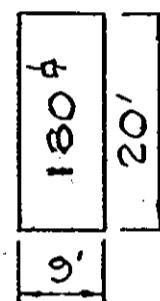
**SITE ANALYSIS**

Existing Zoning - New Town - Employment Center (Commercial)  
 Final Development Plan - Phase 122 Plat Book 20 Folios 125 and 126  
 Area of Parcel "A" 8.258 Ac.  
 Ultimate Use - Office Buildings (To Be Built in 3 Phases).

	Net Leasable Office Space	Parking Spaces Required	Parking Spaces Proposed (Based on 9' width)	Building Coverage	
				Without Deck	With Deck
1 <sup>ST</sup> Phase	64,100 <sup>±</sup>	129	248	6.65%	6.65%
2 <sup>ND</sup> Phase	89,000 <sup>±</sup> **	178**		6.65%	21.16%
<b>Total</b>		<b>426**</b>	<b>432</b>	<b>13.30%</b>	<b>27.81%</b>

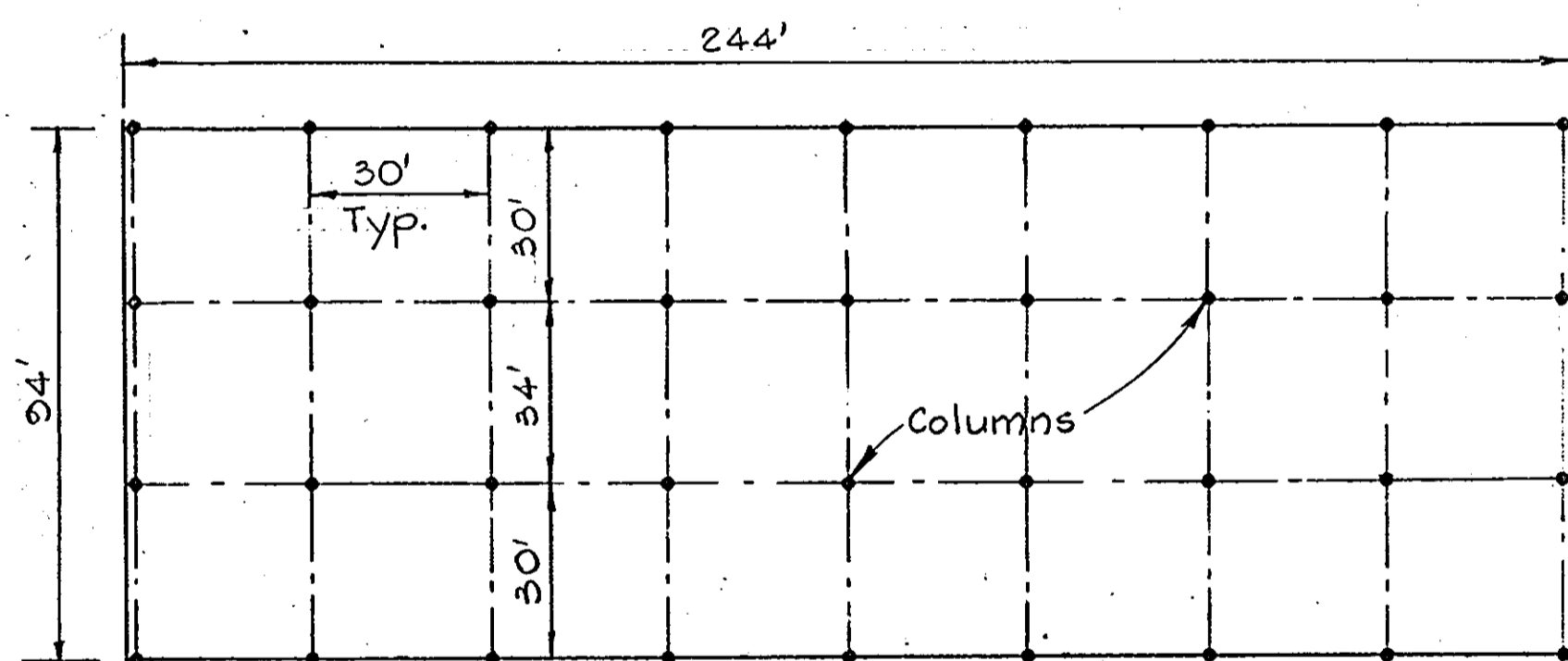
\*\* 2 Parking Spaces/1000<sup>±</sup> Leasable Space.

NOTE: 1) SEE SOP 79-10C FOR 1<sup>ST</sup> PHASE SITE ANALYSIS.  
 2) BUILDING AREAS ARE GLA



**TYPICAL PARKING SPACE**  
No Scale

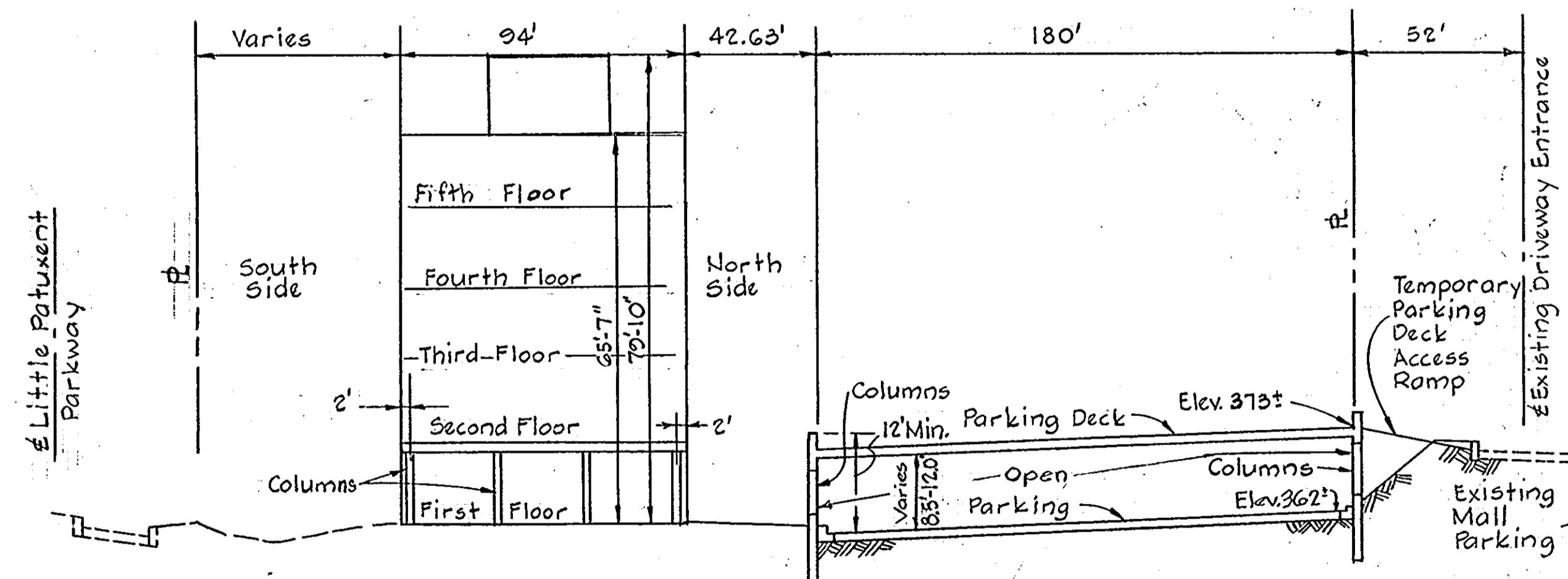
SHEET INDEX	
NO.	DESCRIPTION
1	TITLE SHEET
2	GRADING PLAN
3	PARKING DECK PLAN AND DETAILS
4	STORM DRAIN PROFILES, WATER AND SEWER PLANS
5	SEDIMENT CONTROL AND STORM WATER MANAGEMENT
6	DRAINAGE AREA MAP
7	LANDSCAPE PLAN



**PLAN-PROPOSED OFFICE BUILDING**  
No Scale

**LEGEND**

- 360--- Existing Contours (2' Interval)
- 360— Proposed Contours (1' Interval)
- F.F.000.0 Proposed Finished Floor Elevation
- 360x0 Proposed Spot Elevation
- ☁ Existing Tree Line
- T.C. Top Curb
- Concrete Walk
- ⊕ 6" Oak Existing Trees to Remain
- ++++ Existing Curb (To Be Removed)
- Painted Lines
- 7" Concrete Curb & Gutter
- Concrete Barrier Curb
- Traffic Flow Direction
- "Reserved for Handicapped Persons" (Indicated)
- Handicap Sign
- Curb Cut for Handicapped (See Detail)
- Building Entrance
- Remove Existing Tree
- Mountable Bituminous Curb (Temporary).



**EAST ELEVATION - PROPOSED OFFICE BUILDING**

Scale: Hor. 1"=40'  
Vert. 1"=20'

**APPROVED**  
 PLANNING BOARD  
 OF HOWARD COUNTY  
 DATE: 8-1-79

**WHITMAN, REQUARDT & ASSOCIATES**  
 ENGINEERS  
 1004 ST. PAUL STREET  
 BALTIMORE, MARYLAND 21202  
 Kenneth A. McCord P.E. No. 1974

NO.	DATE	DESCRIPTION OF REVISIONS
3	8-13-80	Howard County Planning Board Granted Approval (Ltr 8-19-80)
2	6-80	Revised Parking Layout and Building Areas
1	8-1-79	As Per Howard County Planning & Zoning Comments

**COLUMBIA SITE PLANS**

FOR  
 TOWN CENTER  
 SECTION 2 AREA 4  
 PARCEL "A"  
 (2<sup>ND</sup> PHASE)

**TITLE SHEET**  
 SHEET 1 OF 7

ELECTION DISTRICT NO. 5, HOWARD COUNTY, MARYLAND  
 DATE: SCALE: AS SHOWN

APPROVED FOR PUBLIC WATER AND PUBLIC SEWERAGE SYSTEMS, HOWARD COUNTY HEALTH DEPARTMENT  
 [Signature] 8-31-79  
 COUNTY HEALTH OFFICER

APPROVED: HOWARD COUNTY OFFICE OF PLANNING AND ZONING  
 [Signature] 8-31-79  
 PLANNING DIRECTOR

CHIEF DIVISION OF LAND DEVELOPMENT  
 [Signature] 8-27-79  
 DIRECTOR

APPROVED FOR PUBLIC WATER, PUBLIC SEWER AND STORM DRAINAGE SYSTEMS AND ROADS, HOWARD COUNTY DEPARTMENT OF PUBLIC WORKS  
 [Signature] 8-24-79  
 CHIEF BUREAU OF ENGINEERING

**TWENTY COLUMBIA CORPORATE CENTER**  
 C/O Howard Res. & Develop. Corp.  
 Rouse Company Building  
 10275 Little Patuxent Parkway  
 Columbia, Md.

**STORM DRAIN STRUCTURE SCHEDULE**

No.	Description	Top Elev.	Inv. Out	Location
MH-1	Type 'B' Manhole	356.60	351.43	See Plan and Profile
MH-2	Type 'B' Manhole	358.40	359.33	See Plan and Profile
MH-3	Type 'B' Manhole	358.80	354.04	See Plan and Profile
MH-4	Type 'B' Manhole	359.30	354.80	See Plan and Profile
MH-5	Type 'B' Manhole	360.40	356.16	See Plan and Profile
I-2	Std. A-B Inlet, 2.5' width	359.00	355.03	See Plan and Profile
I-1	Std. A-B Inlet, 3.5' width	355.30	350.30	See Plan and Profile
S-1	Type 'A' Headwall	352.50	349.00	See Plan and Profile

\* See Detail: Sheet 4 of 7

**NOTE:**  
 1. See Sheet 4 for Storm Drain Profiles.  
 2. See Sheet 6 for Drainage Area Map.  
 3. See Sheet 5 for Sediment Control and Storm Water Management.  
 4. See Sheet 4 for Water and Sewer Plan.

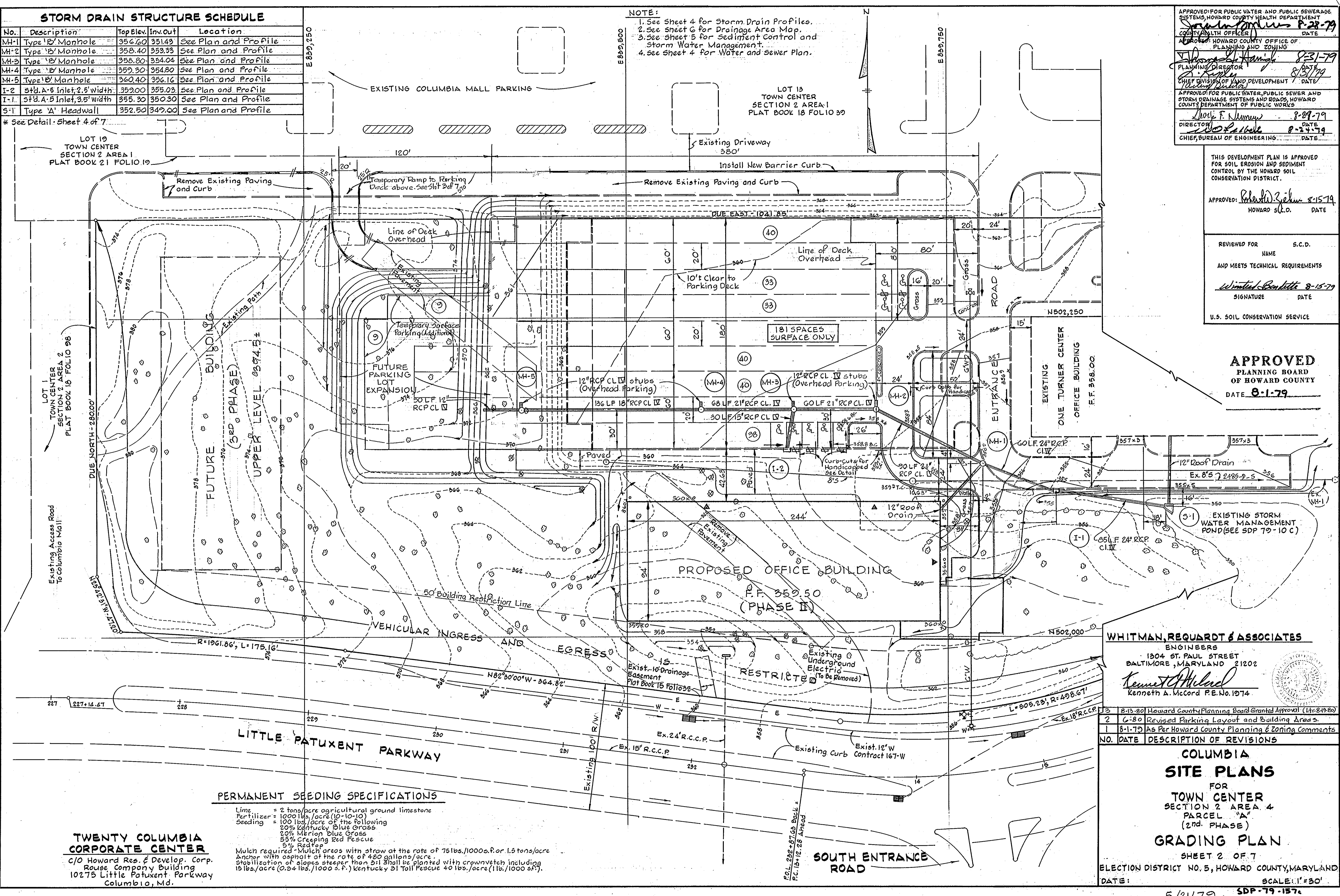
APPROVED FOR PUBLIC WATER AND PUBLIC SEWERAGE SYSTEMS, HOWARD COUNTY HEALTH DEPARTMENT  
 COUNTY HEALTH OFFICER: *[Signature]* DATE: 8-28-79  
 APPROVED: HOWARD COUNTY OFFICE OF PLANNING AND ZONING  
 PLANNING DIRECTOR: *[Signature]* DATE: 8-31-79  
 CHIEF DIVISION OF LAND DEVELOPMENT: *[Signature]* DATE: 8-29-79  
 APPROVED FOR PUBLIC WATER, PUBLIC SEWER AND STORM DRAINAGE SYSTEMS AND ROADS, HOWARD COUNTY DEPARTMENT OF PUBLIC WORKS  
 DIRECTOR: *[Signature]* DATE: 8-29-79  
 CHIEF, BUREAU OF ENGINEERING: *[Signature]* DATE: 8-24-79

THIS DEVELOPMENT PLAN IS APPROVED FOR SOIL EROSION AND SEDIMENT CONTROL BY THE HOWARD SOIL CONSERVATION DISTRICT.

APPROVED: *[Signature]* DATE: 8-15-79  
 HOWARD S.C.D. DATE

REVIEWED FOR NAME: S.C.D. NAME: *[Signature]* DATE: 8-15-79  
 AND MEETS TECHNICAL REQUIREMENTS  
 SIGNATURE DATE  
 U.S. SOIL CONSERVATION SERVICE

**APPROVED**  
 PLANNING BOARD OF HOWARD COUNTY  
 DATE: 8-1-79



**PERMANENT SEEDING SPECIFICATIONS**

Lime = 2 tons/acre agricultural ground limestone  
 Fertilizer = 1000 lbs./acre (10-10-10)  
 Seeding = 100 lbs./acre of the following:  
 20% Kentucky Blue Grass  
 20% Merion Blue Grass  
 55% Creeping Red Fescue  
 5% Seedling  
 Mulch required - Mulch areas with straw at the rate of 75 lbs./1000 s.f. or 1.5 tons/acre  
 Anchor with asphalt at the rate of 480 gallons/acre.  
 Stabilization of slopes steeper than 5:1 shall be planted with crownvetch including 15 lbs./acre (0.34 lbs./1000 s.f.) Kentucky 31 Tall Fescue + 0 lbs./acre (1 lb./1000 s.f.).

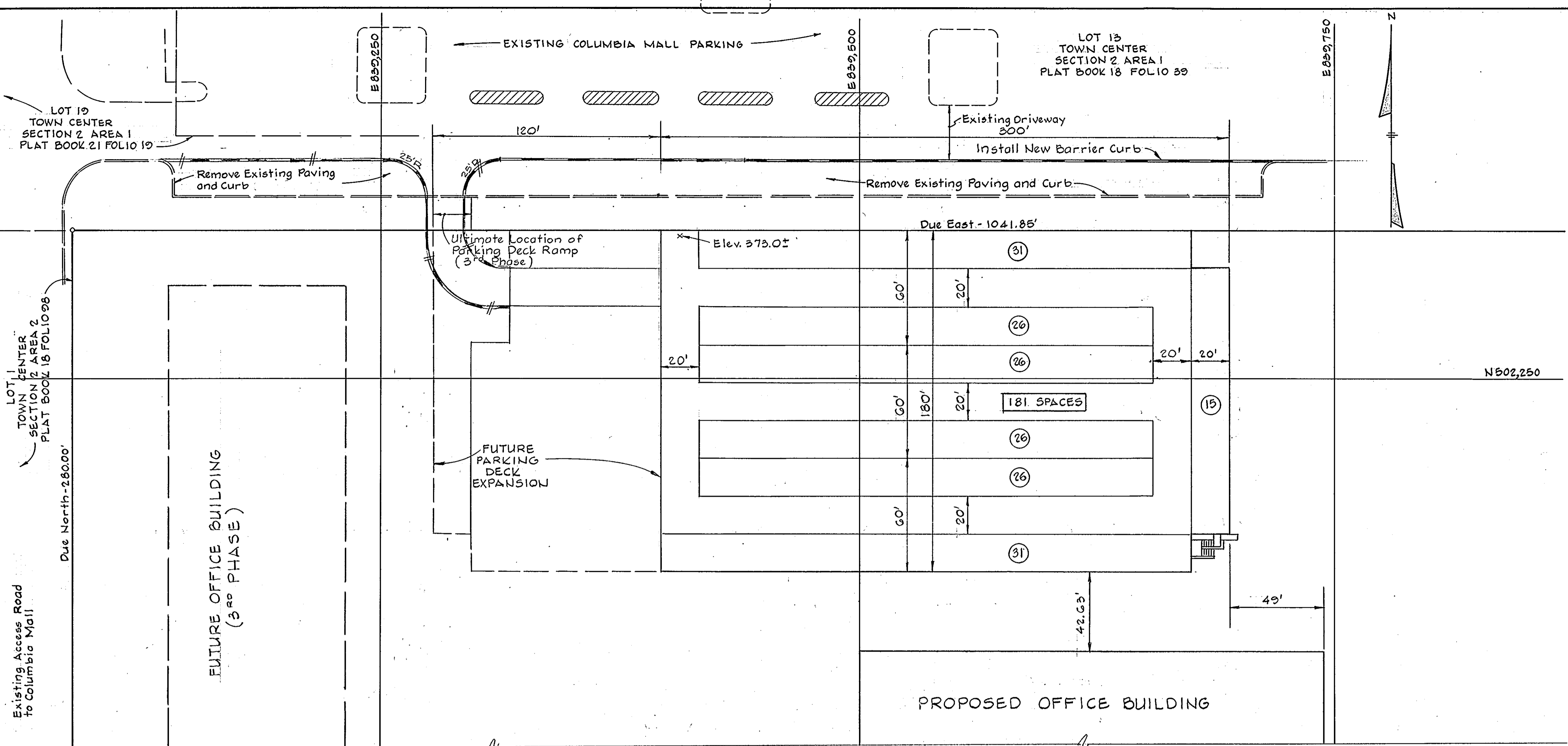
**TWENTY COLUMBIA CORPORATE CENTER**  
 C/O Howard Res. & Develop. Corp.  
 Rouse Company Building  
 10275 Little Patuxent Parkway  
 Columbia, Md.

**WHITMAN, REQUARDT & ASSOCIATES**  
 ENGINEERS  
 1304 ST. PAUL STREET  
 BALTIMORE, MARYLAND 21202  
*[Signature]*  
 Kenneth A. McCard P.E. No. 1974

NO.	DATE	DESCRIPTION OF REVISIONS
1	8-13-80	Howard County Planning Board Granted Approval (Ltr. 8-13-80)
2	6-80	Revised Parking Layout and Building Areas
1	8-1-79	As Per Howard County Planning & Zoning Comments

**COLUMBIA SITE PLANS**  
 FOR  
 TOWN CENTER  
 SECTION 2 AREA 4  
 PARCEL "A"  
 (2nd. PHASE)  
**GRADING PLAN**  
 SHEET 2 OF 7  
 ELECTION DISTRICT NO. 5, HOWARD COUNTY, MARYLAND  
 DATE: 5/21/79 SCALE: 1"=30'

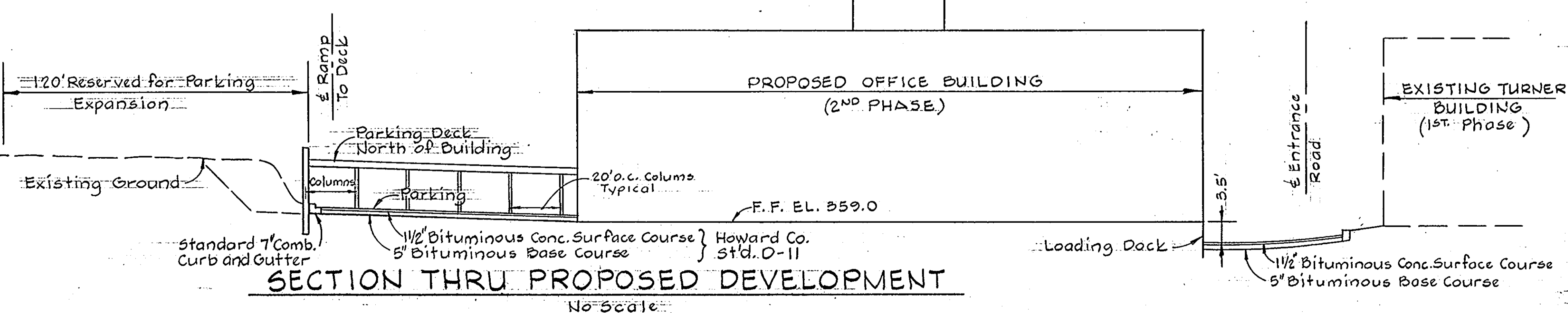
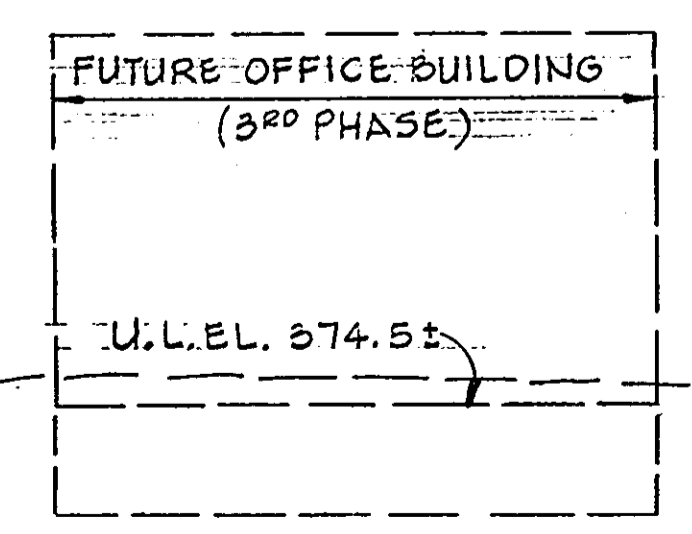
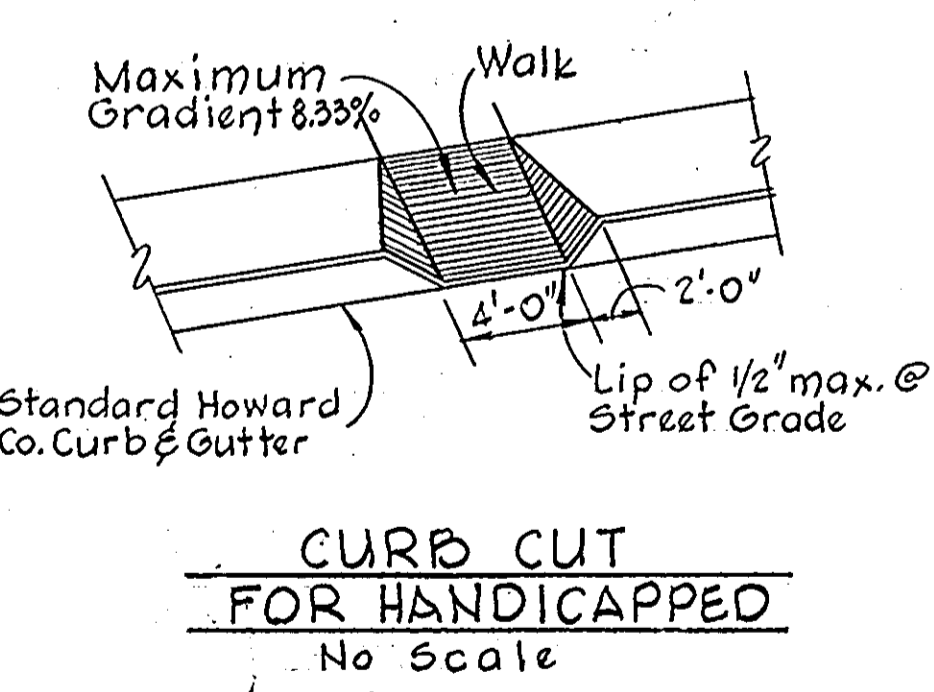
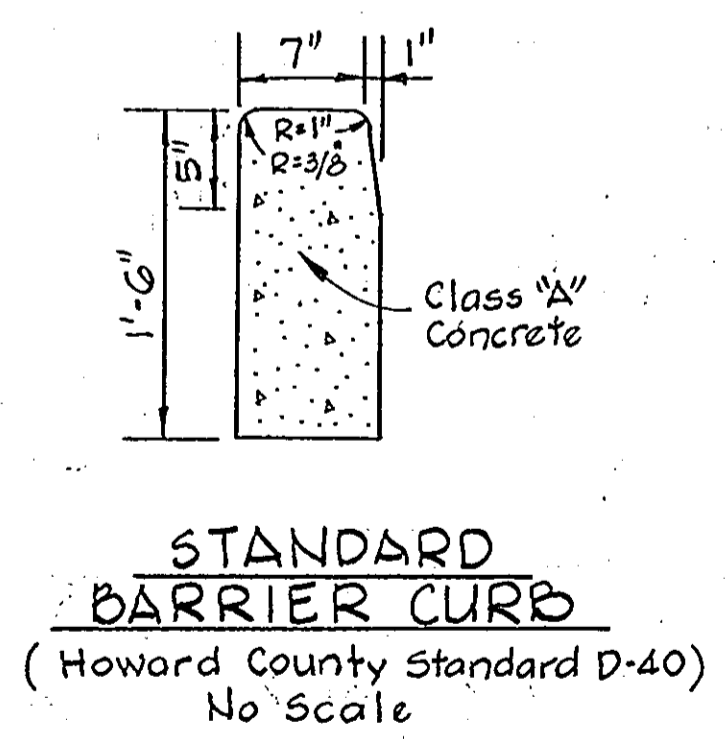
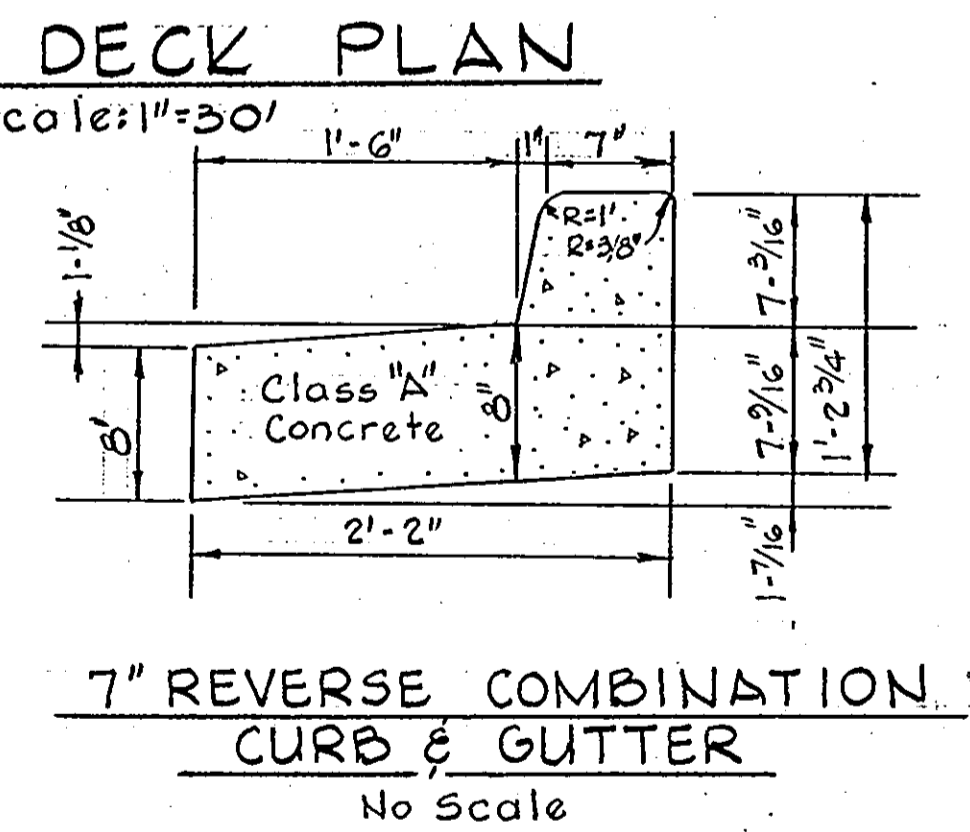
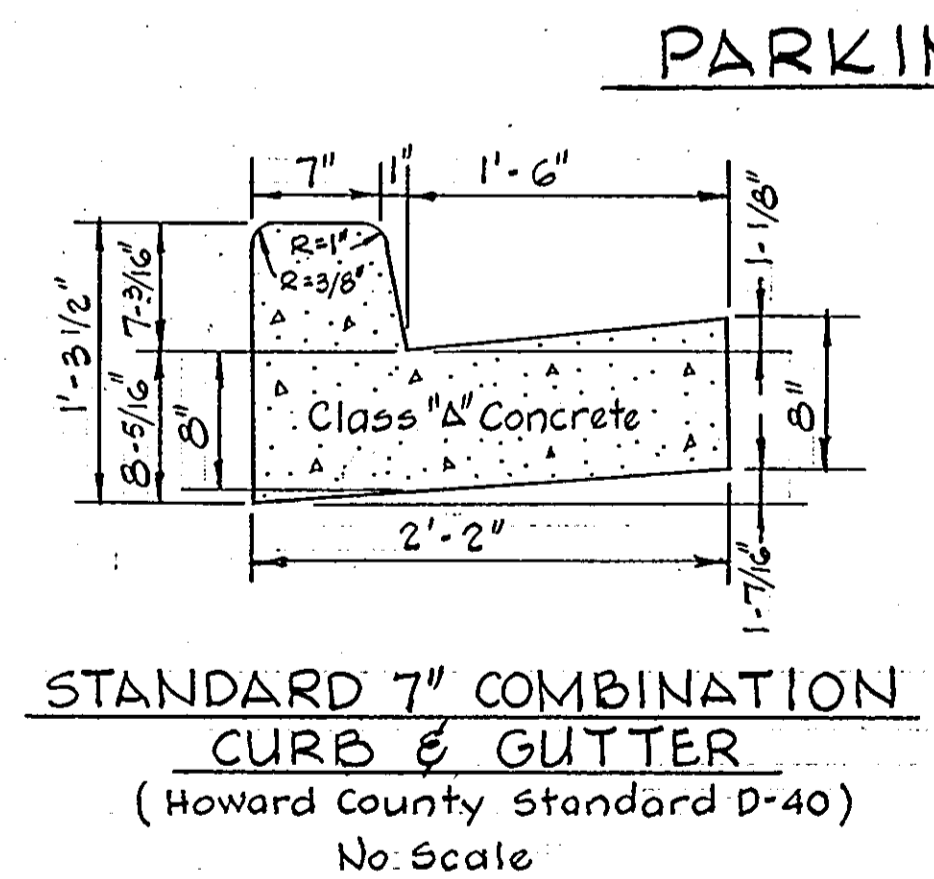
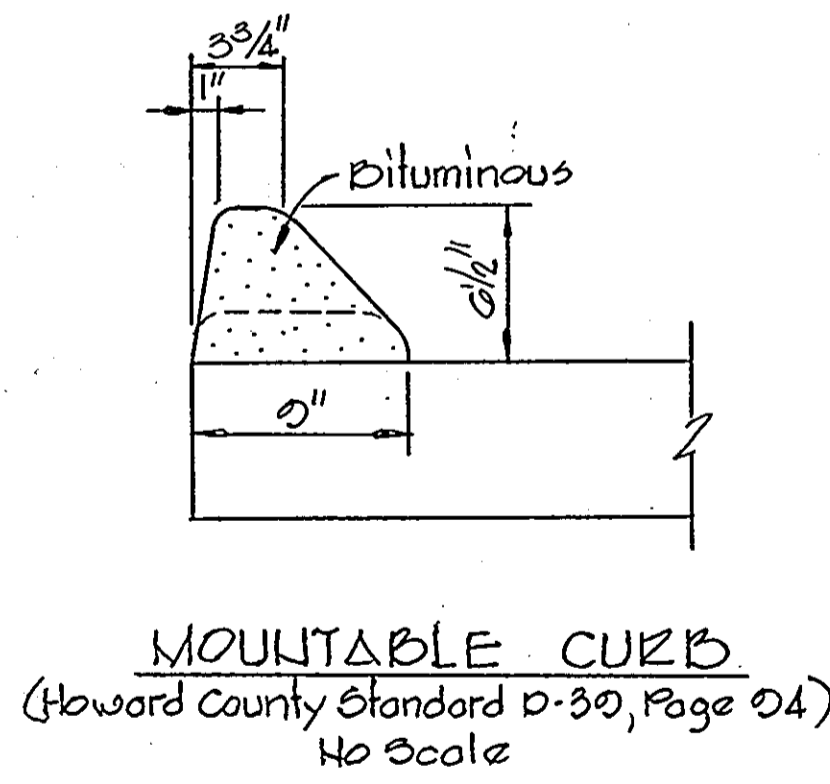
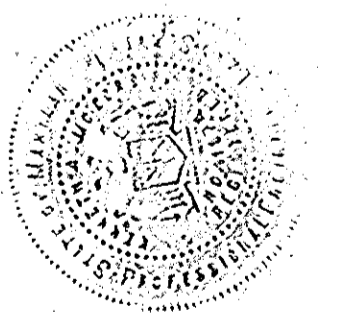
APPROVED FOR PUBLIC WATER AND PUBLIC SEWERAGE SYSTEMS, HOWARD COUNTY HEALTH DEPARTMENT  
 COUNTY HEALTH OFFICER: *[Signature]* DATE: 8-28-79  
 APPROVED: HOWARD COUNTY OFFICE OF PLANNING AND ZONING  
 PLANNING DIRECTOR: *[Signature]* DATE: 8-31-79  
 CHIEF DIVISION OF LAND DEVELOPMENT: *[Signature]* DATE: 8/31/79  
 APPROVED FOR PUBLIC WATER, PUBLIC SEWER AND STORM DRAINAGE SYSTEMS AND ROADS, HOWARD COUNTY DEPARTMENT OF PUBLIC WORKS  
 DIRECTOR: *[Signature]* DATE: 8-27-79  
 CHIEF, BUREAU OF ENGINEERING: *[Signature]* DATE: 8-27-79



**APPROVED**  
 PLANNING BOARD  
 OF HOWARD COUNTY  
 DATE: 8-1-79

**TWENTY COLUMBIA CORPORATE CENTER**  
 C/O Howard Res. & Develop. Corp.  
 Rouse Company Building  
 10275 Little Patuxent Parkway  
 Columbia, Md.

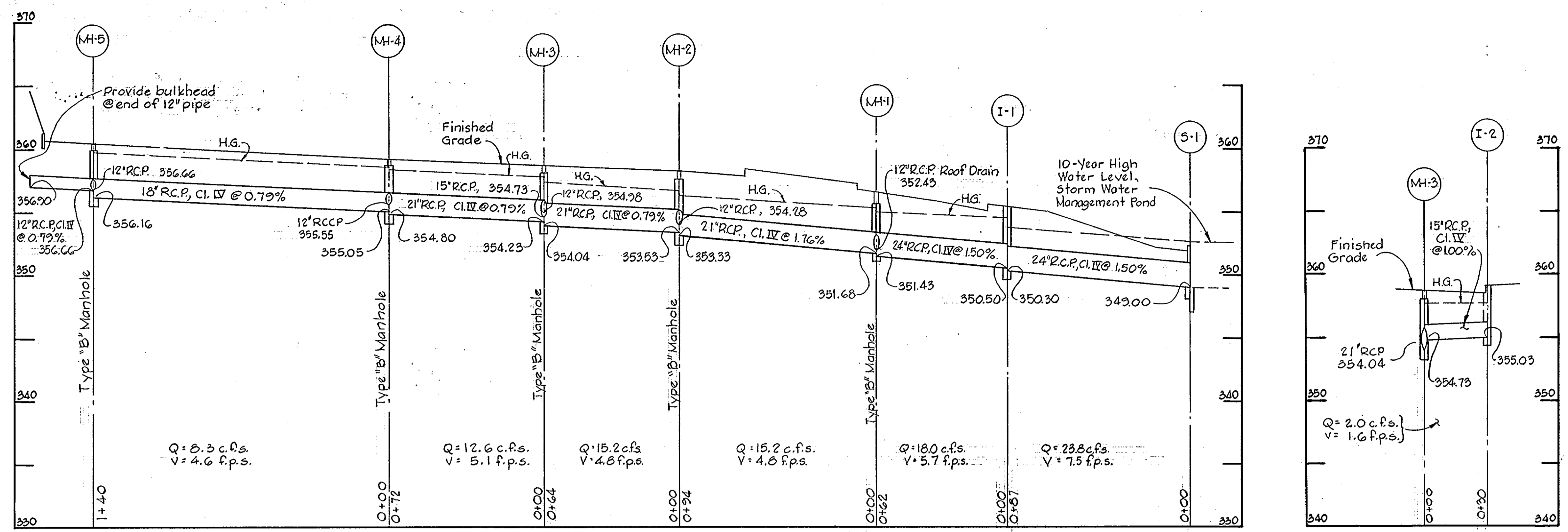
**WHITMAN, REQUARDT & ASSOCIATES**  
 ENGINEERS  
 1304 ST. PAUL STREET  
 BALTIMORE, MARYLAND 21202  
*[Signature]*  
 Kenneth A. McCord P.E. No. 1974



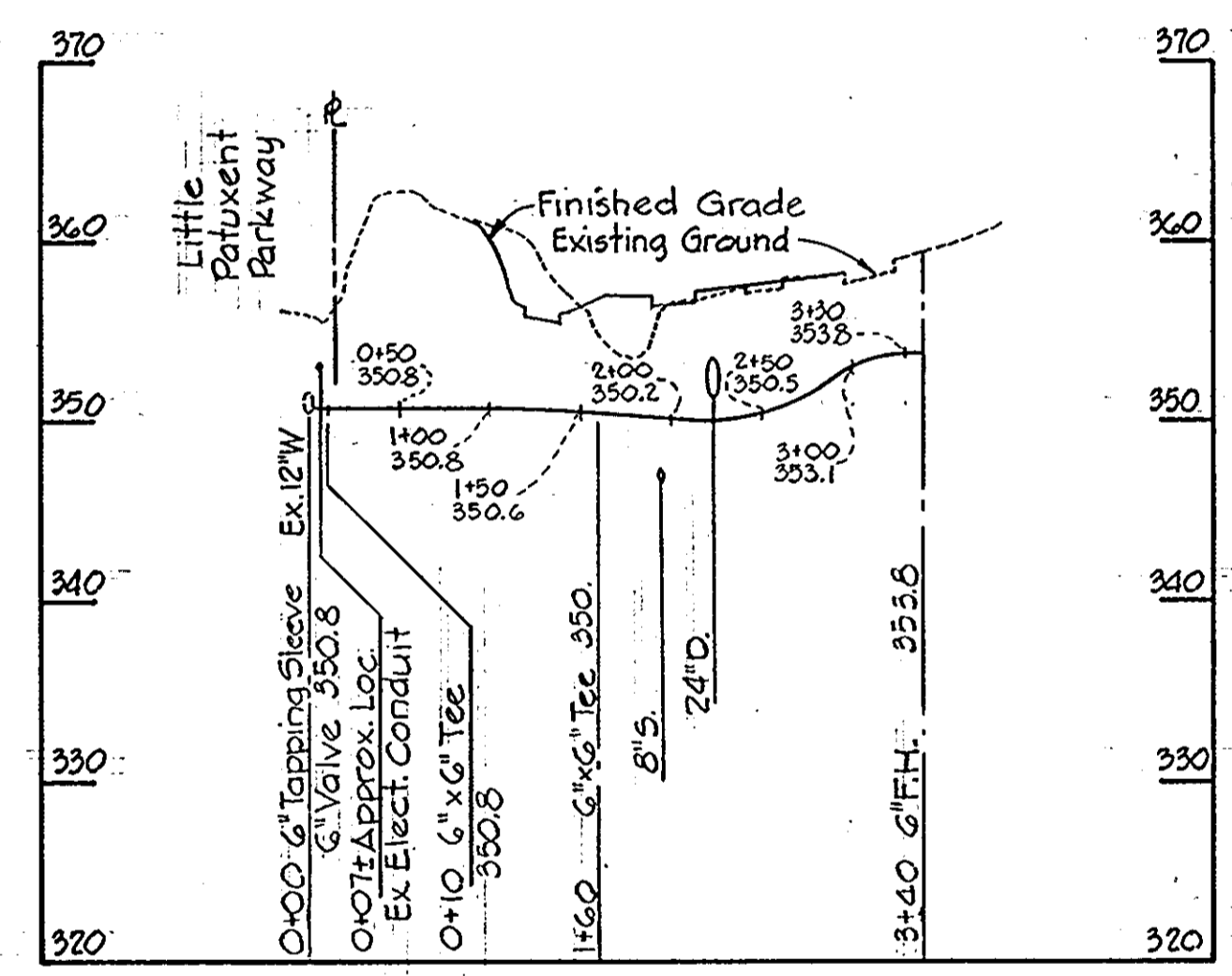
NO.	DATE	DESCRIPTION OF REVISIONS
3	8-13-80	Howard County Planning Board Granted Approval. (Ltr 8-19-80)
2	6-80	Revised Parking Layout and Building Areas.
1	8-1-79	As Per Howard County Planning & Zoning Comments

**COLUMBIA SITE PLANS**  
 FOR  
 TOWN CENTER  
 SECTION 2 AREA 4  
 PARCEL "A"  
 (2nd PHASE)  
**PARKING DECK PLAN AND DETAILS**  
 SHEET 3 OF 7  
 ELECTION DISTRICT NO. 5, HOWARD COUNTY, MARYLAND  
 DATE: 5/21/79 SCALE: AS SHOWN  
 SDP-79-157c

APPROVED FOR PUBLIC WATER AND PUBLIC SEWERAGE SYSTEMS, HOWARD COUNTY HEALTH DEPARTMENT  
 COUNTY HEALTH OFFICER: *James Brubaker* DATE: 8-28-79  
 APPROVED: HOWARD COUNTY OFFICE OF PLANNING AND ZONING  
 PLANNING DIRECTOR: *Thomas J. ...* DATE: 8/31/79  
 CHIEF DIVISION OF LAND DEVELOPMENT: *...* DATE: 8/31/79  
 APPROVED FOR PUBLIC WATER, PUBLIC SEWER AND STORM DRAINAGE SYSTEMS AND ROADS, HOWARD COUNTY DEPARTMENT OF PUBLIC WORKS  
 DIRECTOR: *...* DATE: 8-27-79  
 CHIEF BUREAU OF ENGINEERING: *...* DATE: 8-27-79



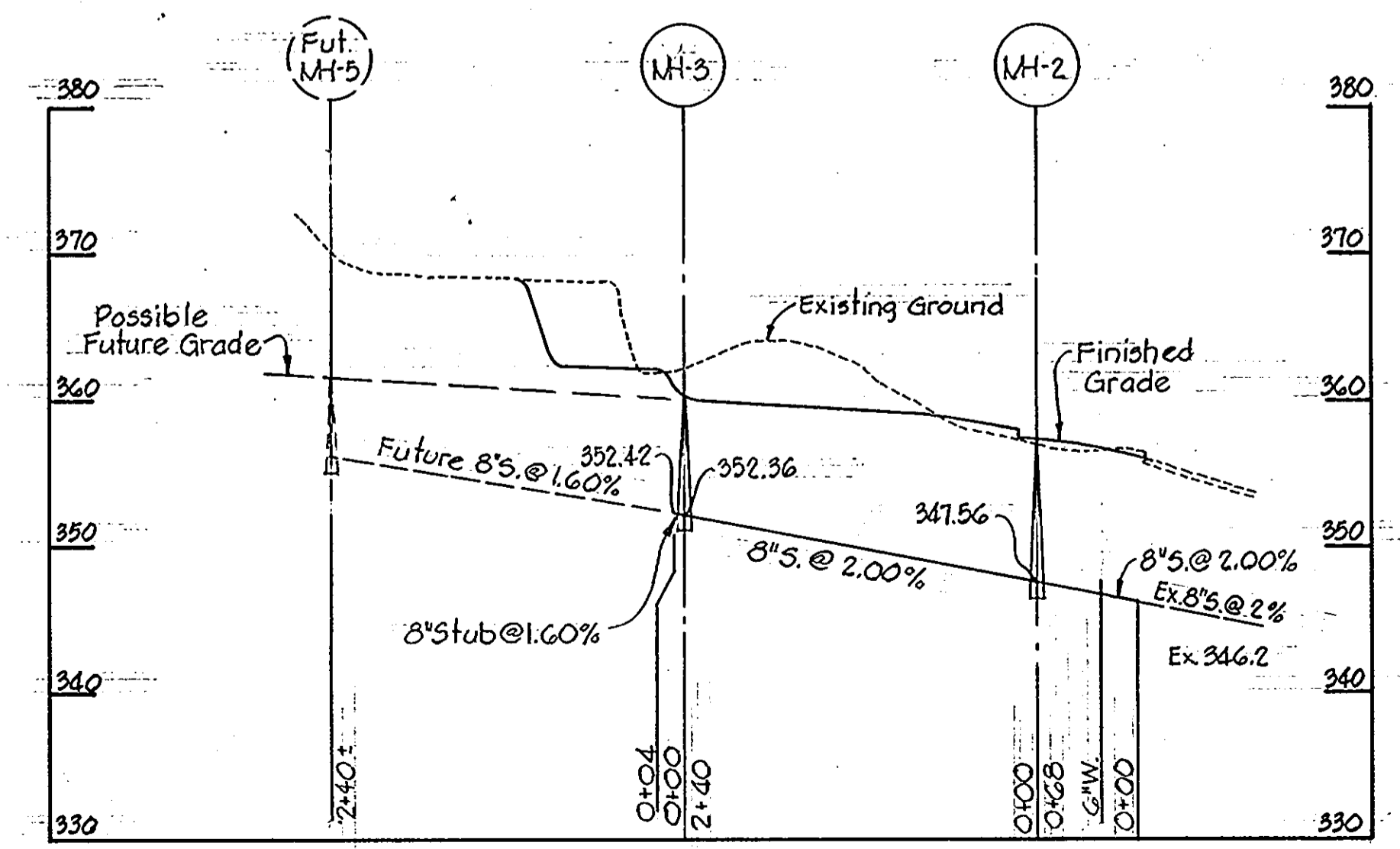
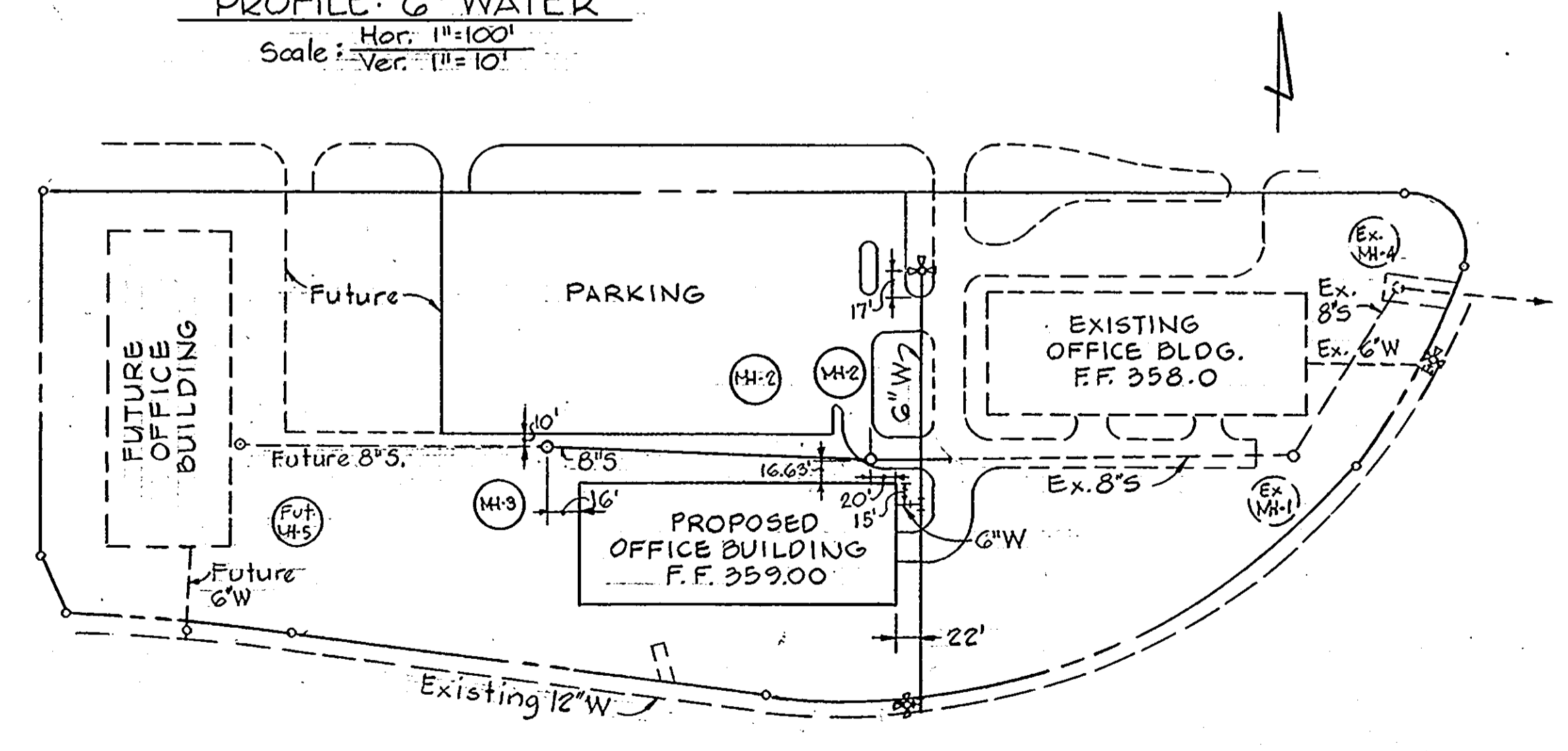
PROFILES  
 Hor. 1"=30'  
 Scale: Ver. 1"=5'



APPROVED  
 PLANNING BOARD  
 OF HOWARD COUNTY  
 DATE: 8-1-79

TWENTY COLUMBIA  
 CORPORATE CENTER  
 C/O Howard Res. & Develop. Corp.  
 Rouse Company Building  
 10275 Little Patuxent Parkway  
 Columbia, Md.

WHITMAN, REQUARDT & ASSOCIATES  
 ENGINEERS  
 1304 ST. PAUL STREET  
 BALTIMORE, MARYLAND 21202  
*Kenneth A. McCord*  
 Kenneth A. McCord P.E. No. 1974



NO.	DATE	DESCRIPTION OF REVISIONS
1	8-1-79	As Per Howard County Planning & Zoning Comments.

COLUMBIA  
 SITE PLANS  
 FOR  
 TOWN CENTER  
 SECTION 2 AREA 4  
 PARCEL "A"  
 (2<sup>ND</sup> PHASE)  
 STORM DRAIN PROFILES  
 WATER AND SEWER PLANS  
 SHEET 4 OF 7  
 ELECTION DISTRICT NO. 5, HOWARD COUNTY, MARYLAND.  
 DATE: 5/21/79  
 SCALE: AS SHOWN  
 SDP-79-157c

**CERTIFICATION BY THE DEVELOPER**  
 I CERTIFY THAT ALL DEVELOPMENT AND/OR CONSTRUCTION WILL BE DONE ACCORDING TO THIS PLAN OF DEVELOPMENT AND PLAN FOR EROSION AND SEDIMENT CONTROL, AND I ALSO AUTHORIZE PERIODIC ON-SITE INSPECTION BY THE HOWARD SOIL CONSERVATION DISTRICT OR THEIR AUTHORIZED AGENTS.

*Frederick W. Glassberg* 5/21/79  
 FREDERICK W. GLASSBERG DATE

**CERTIFICATION BY THE ENGINEER**  
 I CERTIFY THAT THIS PLAN FOR EROSION AND SEDIMENT CONTROL REPRESENTS A PRACTICAL AND WORKABLE PLAN BASED ON MY PERSONAL KNOWLEDGE OF THE SITE CONDITIONS AND THAT IT WAS PREPARED IN ACCORDANCE WITH THE REQUIREMENTS OF THE HOWARD SOIL CONSERVATION DISTRICT.

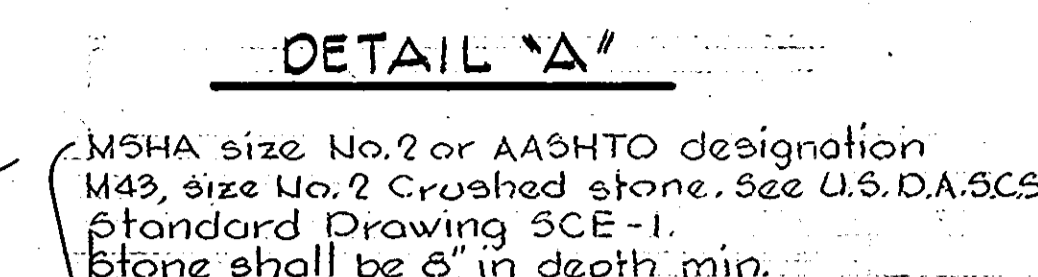
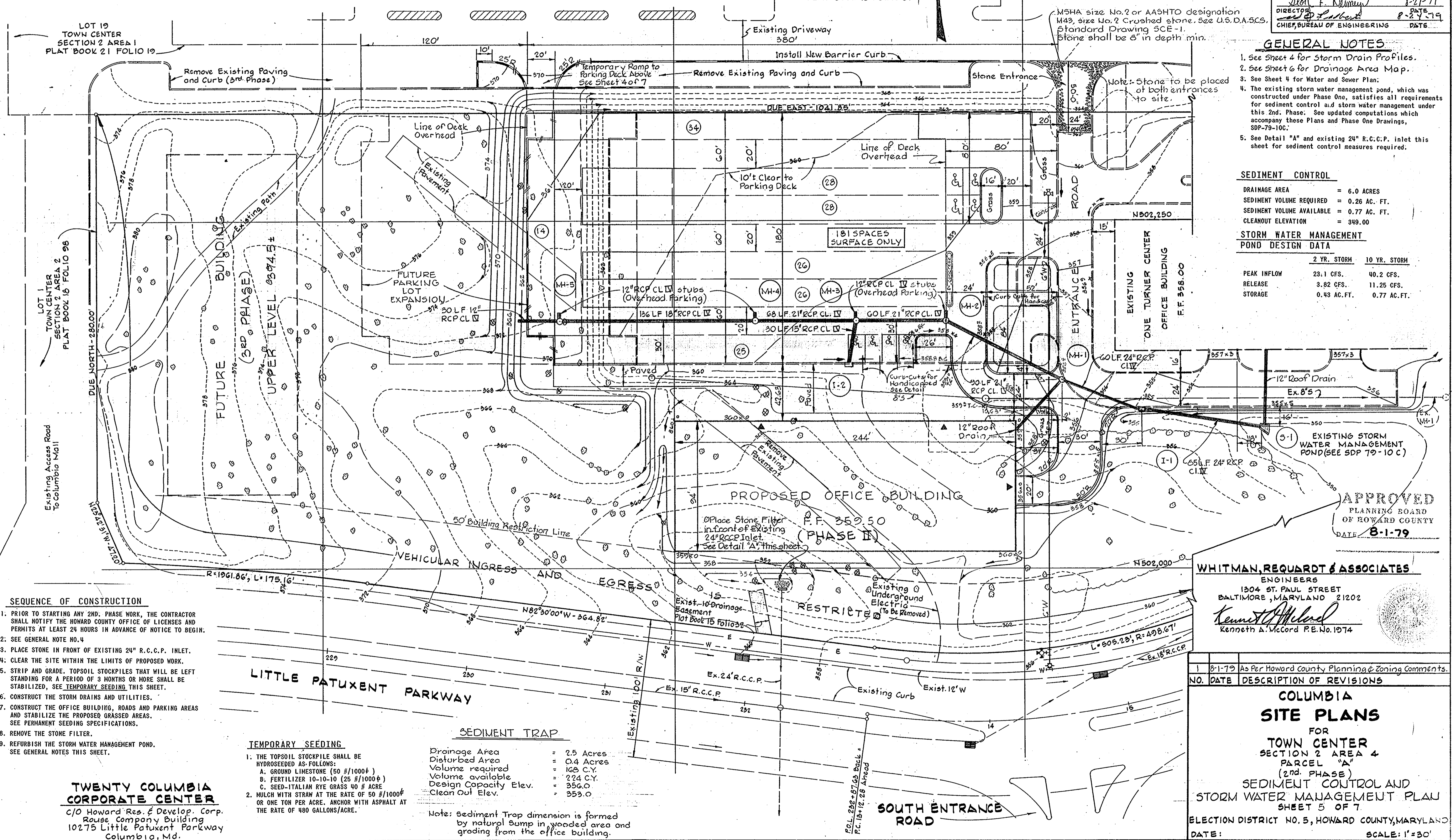
*Kenneth A. McCord* 5-21-79  
 KENNETH A. McCORD, P.E. No. 1974 DATE

REVIEWED FOR HOWARD S.C.D. NAME AND MEETS TECHNICAL REQUIREMENTS  
*Wanda B. ...* 8-15-79  
 SIGNATURE DATE  
 U.S. SOIL CONSERVATION SERVICE

THIS DEVELOPMENT PLAN IS APPROVED FOR SOIL EROSION AND SEDIMENT CONTROL BY THE HOWARD SOIL CONSERVATION DISTRICT.  
 APPROVED: *Robert D. ...* 8-15-79  
 HOWARD S.C.D. DATE

**CAUTION NOTE:**  
 THIS DRAWING IS NOT TO BE USED FOR ANY CONSTRUCTION OTHER THAN THE TEMPORARY SEDIMENT CONTROL TRAP DESIGNATED "DETAIL 'A'".

APPROVED FOR PUBLIC WATER AND PUBLIC SEWERAGE SYSTEMS, HOWARD COUNTY HEALTH DEPARTMENT  
 COUNTY HEALTH OFFICER *...* 8-21-79  
 APPROVED: HOWARD COUNTY OFFICE OF PLANNING AND ZONING  
 PLANNING DIRECTOR *...* 8-21-79  
 CHIEF DIVISION OF LAND DEVELOPMENT  
 APPROVED FOR PUBLIC WATER, PUBLIC SEWER AND STORM DRAINAGE SYSTEMS AND ROADS, HOWARD COUNTY DEPARTMENT OF PUBLIC WORKS  
 DIRECTOR *...* 8-27-79  
 CHIEF, BUREAU OF ENGINEERING DATE



- GENERAL NOTES**
- See Sheet 4 for Storm Drain Profiles.
  - See Sheet 6 for Drainage Area Map.
  - See Sheet 4 for Water and Sewer Plan.
  - The existing storm water management pond, which was constructed under Phase One, satisfies all requirements for sediment control and storm water management under this 2nd. Phase. See updated computations which accompany these Plans and Phase One Drawings, SDP-79-100.
  - See Detail "A" and existing 24" R.C.P. inlet this sheet for sediment control measures required.

**SEDIMENT CONTROL**

DRAINAGE AREA = 6.0 ACRES  
 SEDIMENT VOLUME REQUIRED = 0.26 AC. FT.  
 SEDIMENT VOLUME AVAILABLE = 0.77 AC. FT.  
 CLEANOUT ELEVATION = 349.00

**STORM WATER MANAGEMENT POND DESIGN DATA**

	2 YR. STORM	10 YR. STORM
PEAK INFLOW	23.1 CFS.	40.2 CFS.
RELEASE	3.82 CFS.	11.25 CFS.
STORAGE	0.43 AC.FT.	0.77 AC.FT.

- SEQUENCE OF CONSTRUCTION**
- PRIOR TO STARTING ANY 2ND. PHASE WORK, THE CONTRACTOR SHALL NOTIFY THE HOWARD COUNTY OFFICE OF LICENSES AND PERMITS AT LEAST 24 HOURS IN ADVANCE OF NOTICE TO BEGIN.
  - SEE GENERAL NOTE NO. 4
  - PLACE STONE IN FRONT OF EXISTING 24" R.C.C.P. INLET.
  - CLEAR THE SITE WITHIN THE LIMITS OF PROPOSED WORK.
  - STRIP AND GRADE. TOPSOIL STOCKPILES THAT WILL BE LEFT STANDING FOR A PERIOD OF 3 MONTHS OR MORE SHALL BE STABILIZED, SEE TEMPORARY SEEDING THIS SHEET.
  - CONSTRUCT THE STORM DRAINS AND UTILITIES.
  - CONSTRUCT THE OFFICE BUILDING, ROADS AND PARKING AREAS AND STABILIZE THE PROPOSED GRASSED AREAS. SEE PERMANENT SEEDING SPECIFICATIONS.
  - REMOVE THE STONE FILTER.
  - REFURBISH THE STORM WATER MANAGEMENT POND. SEE GENERAL NOTES THIS SHEET.

**TEMPORARY SEEDING**

- THE TOPSOIL STOCKPILE SHALL BE HYDROSEED AS FOLLOWS:  
 A. GROUND LIMESTONE (50 #/1000<sup>ft</sup>)  
 B. FERTILIZER 10-10-10 (25 #/1000<sup>ft</sup>)  
 C. SEED-ITALIAN RYE GRASS 40 #/ACRE
- MULCH WITH STRAW AT THE RATE OF 50 #/1000<sup>ft</sup> OR ONE TON PER ACRE. ANCHOR WITH ASPHALT AT THE RATE OF 480 GALLONS/ACRE.

**SEDIMENT TRAP**

Drainage Area = 2.5 Acres  
 Disturbed Area = 0.4 Acres  
 Volume required = 168 C.Y.  
 Volume available = 224 C.Y.  
 Design Capacity Elev. = 356.0  
 Clean out Elev. = 353.0

Note: Sediment Trap dimension is formed by natural Sump in wooded area and grading from the office building.

**TWENTY COLUMBIA CORPORATE CENTER**  
 C/O Howard Res. & Develop. Corp.  
 Rouse Company Building  
 10275 Little Patuxent Parkway  
 Columbia, Md.

**WHITMAN, REQUARDT & ASSOCIATES**  
 ENGINEERS  
 1304 ST. PAUL STREET  
 BALTIMORE, MARYLAND 21202  
*Kenneth A. McCord*  
 Kenneth A. McCord P.E. No. 1974

NO.	DATE	DESCRIPTION OF REVISIONS
1	8-1-79	As Per Howard County Planning & Zoning Comments.

**COLUMBIA SITE PLANS**  
 FOR TOWN CENTER SECTION 2 AREA 4 PARCEL "A" (2nd. PHASE)  
 SEDIMENT CONTROL AND STORM WATER MANAGEMENT PLAN SHEET 5 OF 7  
 ELECTION DISTRICT NO. 5, HOWARD COUNTY, MARYLAND  
 DATE: 5/21/79 SCALE: 1"=30'

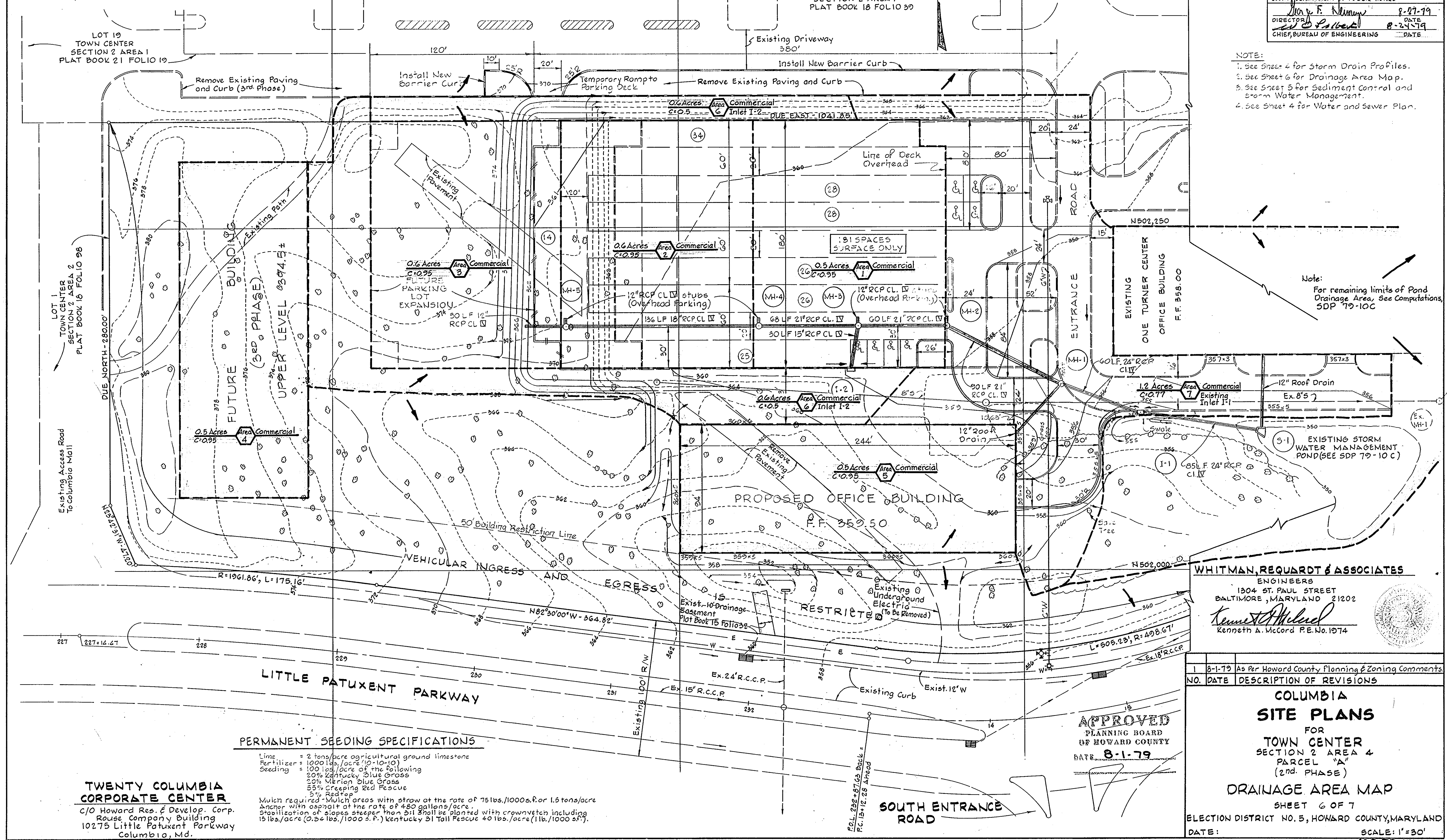
**STORM DRAIN STRUCTURE SCHEDULE**

No.	Description	Top Elev.	Inv. Out	Location
MH-1	Type 'B' Manhole	356.30	351.00	See Plan and Profile
MH-2	Type 'B' Manhole	358.45	353.27	See Plan and Profile
MH-3	Type 'B' Manhole	358.80	353.23	See Plan and Profile
MH-4	Type 'B' Manhole	357.30	354.80	See Plan and Profile
MH-5	Type 'B' Manhole	360.40	356.16	See Plan and Profile
I-2	Std. A-5 Inlet, 2.5' dia.	359.00	355.23	See Plan and Profile

\* - See Detail, sheet 4 of 7

APPROVED FOR PUBLIC WATER AND PUBLIC SEWERAGE SYSTEMS, HOWARD COUNTY HEALTH DEPARTMENT  
 COUNTY HEALTH OFFICER *John M. Gindus* 8-29-79  
 APPROVED: HOWARD COUNTY OFFICE OF PLANNING AND ZONING  
 PLANNING DIRECTOR *Thomas H. Amida* 8-31-79  
 CHIEF DIVISION OF LAND DEVELOPMENT *John F. Kopy* 8/31/79  
 APPROVED FOR PUBLIC WATER, PUBLIC SEWER AND STORM DRAINAGE SYSTEMS AND ROADS, HOWARD COUNTY DEPARTMENT OF PUBLIC WORKS  
 DIRECTOR *John F. Nunn* 8-27-79  
 CHIEF, BUREAU OF ENGINEERING *John F. Nunn* 8-27-79

- NOTE:  
 1. See Sheet 4 for Storm Drain Profiles.  
 2. See Sheet 6 for Drainage Area Map.  
 3. See Sheet 5 for Sediment Control and Storm Water Management.  
 4. See Sheet 4 for Water and Sewer Plan.



Note:  
 For remaining limits of Pond Drainage Area, See Computations, SDP 79-10C

**PERMANENT SEEDING SPECIFICATIONS**

Lime = 2 tons/acre agricultural ground limestone  
 Fertilizer = 1000 lbs./acre (10-10-10)  
 Seeding = 100 lbs./acre of the following:  
 20% Kentucky Blue Grass  
 20% Merion Blue Grass  
 5% creeping Red Fescue  
 55% Ryegrass  
 Mulch required - Mulch areas with straw at the rate of 75 lbs./1000 sq. ft. or 1.5 tons/acre.  
 Anchor with asphalt at the rate of 480 gallons/acre.  
 Stabilization of slopes steeper than 3:1 shall be planted with crownvetch including 15 lbs./acre (0.34 lbs./1000 sq. ft.) Kentucky 31 Tall Fescue 40 lbs./acre (1 lb./1000 sq. ft.).

**TWENTY COLUMBIA CORPORATE CENTER**  
 C/O Howard Res. & Develop. Corp.  
 Rouse Company Building  
 10275 Little Patuxent Parkway  
 Columbia, Md.

**WHITMAN, REQUARDT & ASSOCIATES**  
 ENGINEERS  
 1304 ST. PAUL STREET  
 BALTIMORE, MARYLAND 21202  
*Kenneth A. McCord*  
 Kenneth A. McCord P.E. No. 1074

NO.	DATE	DESCRIPTION OF REVISIONS
1	8-1-79	As Per Howard County Planning & Zoning Comments

**APPROVED**  
 PLANNING BOARD  
 OF HOWARD COUNTY  
 DATE 8-1-79

**COLUMBIA SITE PLANS**  
 FOR  
 TOWN CENTER  
 SECTION 2 AREA 4  
 PARCEL "A"  
 (2nd. PHASE)  
**DRAINAGE AREA MAP**  
 SHEET 6 OF 7

ELECTION DISTRICT NO. 5, HOWARD COUNTY, MARYLAND  
 DATE: SCALE: 1" = 30'  
 SDP-79-1574

5/21/79

APPROVED FOR PUBLIC WATER AND PUBLIC SEWERAGE SYSTEMS, HOWARD COUNTY HEALTH DEPARTMENT  
*James J. Harris* 8-28-79  
 COUNTY HEALTH OFFICER DATE

APPROVED: HOWARD COUNTY OFFICE OF PLANNING AND ZONING  
*James J. Harris* 8-31-79  
 PLANNING DIRECTOR DATE

CHIEF DIVISION OF LAND DEVELOPMENT  
*James J. Harris* 8/31/79  
 DATE

APPROVED FOR PUBLIC WATER, PUBLIC SEWER AND STORM DRAINAGE SYSTEMS AND ROADS, HOWARD COUNTY DEPARTMENT OF PUBLIC WORKS  
*Wm. F. Newman* 8-27-79  
 DIRECTOR DATE

*W. F. Newman* 8-24-79  
 CHIEF, BUREAU OF ENGINEERING DATE

**LIGHTING SCHEDULE**

- Parking Lot - 30' Pole and Concealed Incandescent Light
- Luminaires - 2- 400 Watt @ Pole
- "GARCO" Fixture or Equal
  
- ◆ Pedestrian Lighting 4-Globe 10' Pole, 4-150 Watt @ Standard

**GENERAL NOTES**

- 1. No refuse containers will be located outside of building. Trash Collection will be internal.

**APPROVED**  
 PLANNING BOARD  
 OF HOWARD COUNTY  
 DATE 8-1-79

**LEGEND**

- ⊕ Existing Trees 12'-16' Ht.
- Existing Woodland Trees Large Caliber (To Remain)
- Canopy Trees 12'-14' Ht. 2 1/2"-3" Cal.
- ⊕ Flowering Tree 6'-8' Ht.
- ⊗ Evergreen Trees 6'-8' Ht. (Existing)
- ⊗ Evergreen Trees 6'-8' Ht.
- ▨ Groundcover Ivy/Pachysandra

NO.	DATE	DESCRIPTION OF REVISIONS
1	8-1-79	As Per Howard County Planning & Zoning Comments.

**COLUMBIA**  
**SITE PLANS**  
 FOR  
 TOWN CENTER  
 SECTION 2 AREA 4  
 PARCEL "A"  
 (2nd PHASE)  
**LANDSCAPE PLAN**  
 SHEET 7 OF 7  
 ELECTION DISTRICT NO. 5, HOWARD COUNTY, MARYLAND  
 DATE: 5/21/79  
 SCALE: 1" = 30'  
 SDP-79-157c

**WHITMAN, REQUARDT & ASSOCIATES**  
 ENGINEERS  
 1304 ST. PAUL STREET  
 BALTIMORE, MARYLAND 21202  
*Kenneth A. McCord*  
 Kenneth A. McCord P.E. No. 1074

