

APPROVED: FOR PUBLIC WATER & PUBLIC SEWERAGE SYSTEMS, HOWARD COUNTY HEALTH DEPARTMENT.

Joyce Boyers 6-26-79
 COUNTY HEALTH DEPARTMENT OFFICER DATE

APPROVED: HOWARD COUNTY OFFICE OF PLANNING & ZONING.

Thomas J. Hanighy 6-28-79
 PLANNING DIRECTOR DATE

Paul Muschman 6-27-79
 CHIEF, DIVISION OF LAND DEVELOPMENT DATE

APPROVED: FOR STORM DRAINAGE SYSTEMS & PUBLIC ROADS, FOR PUBLIC WATER & PUBLIC SEWERAGE SYSTEMS, HOWARD COUNTY DEPARTMENT OF PUBLIC WORKS.

George F. Nemeyer 6-22-79
 DIRECTOR DATE

W. O. Laibach 6-21-79
 CHIEF, BUREAU OF ENGINEERING DATE

REVIEWED FOR NAME SOIL CONSERVATION DISTRICT & MEETS TECHNICAL REQUIREMENTS.

Whitely Burdette 6/18/79
 SIGNATURE, U.S. SOIL CONSERVATION SERVICE DATE

THIS DEVELOPMENT PLAN APPROVED FOR SOIL EROSION & SEDIMENT CONTROL BY THE HOWARD SOIL CONSERVATION DISTRICT.

APPROVED: *Robert Ziehn* 6/18/79
 HOWARD SOIL CONSERVATION DISTRICT DATE

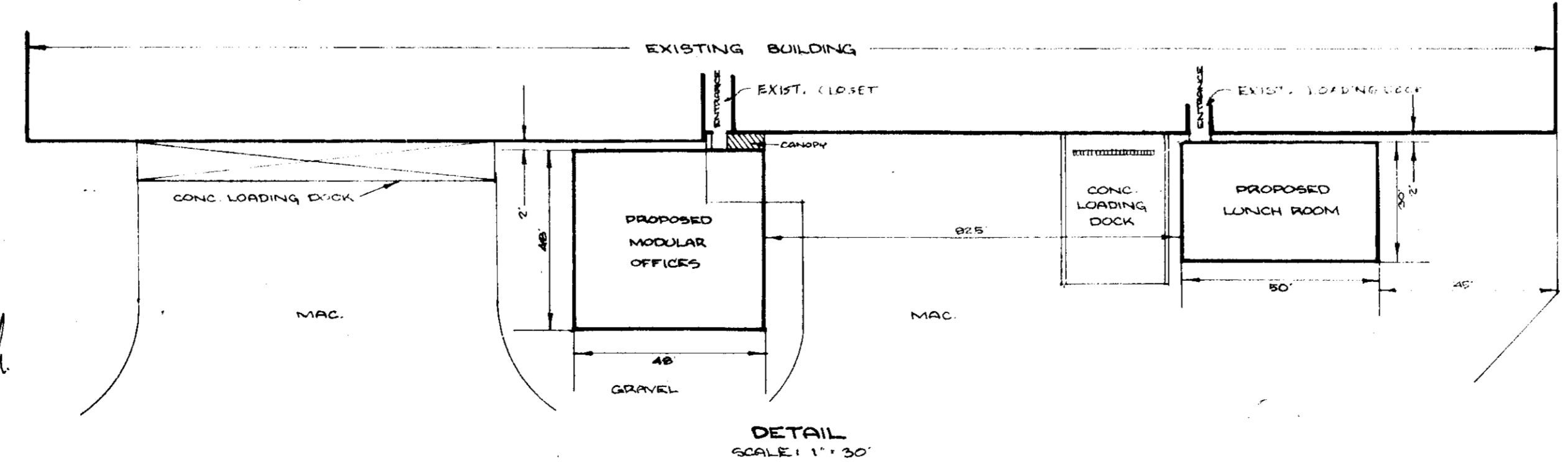
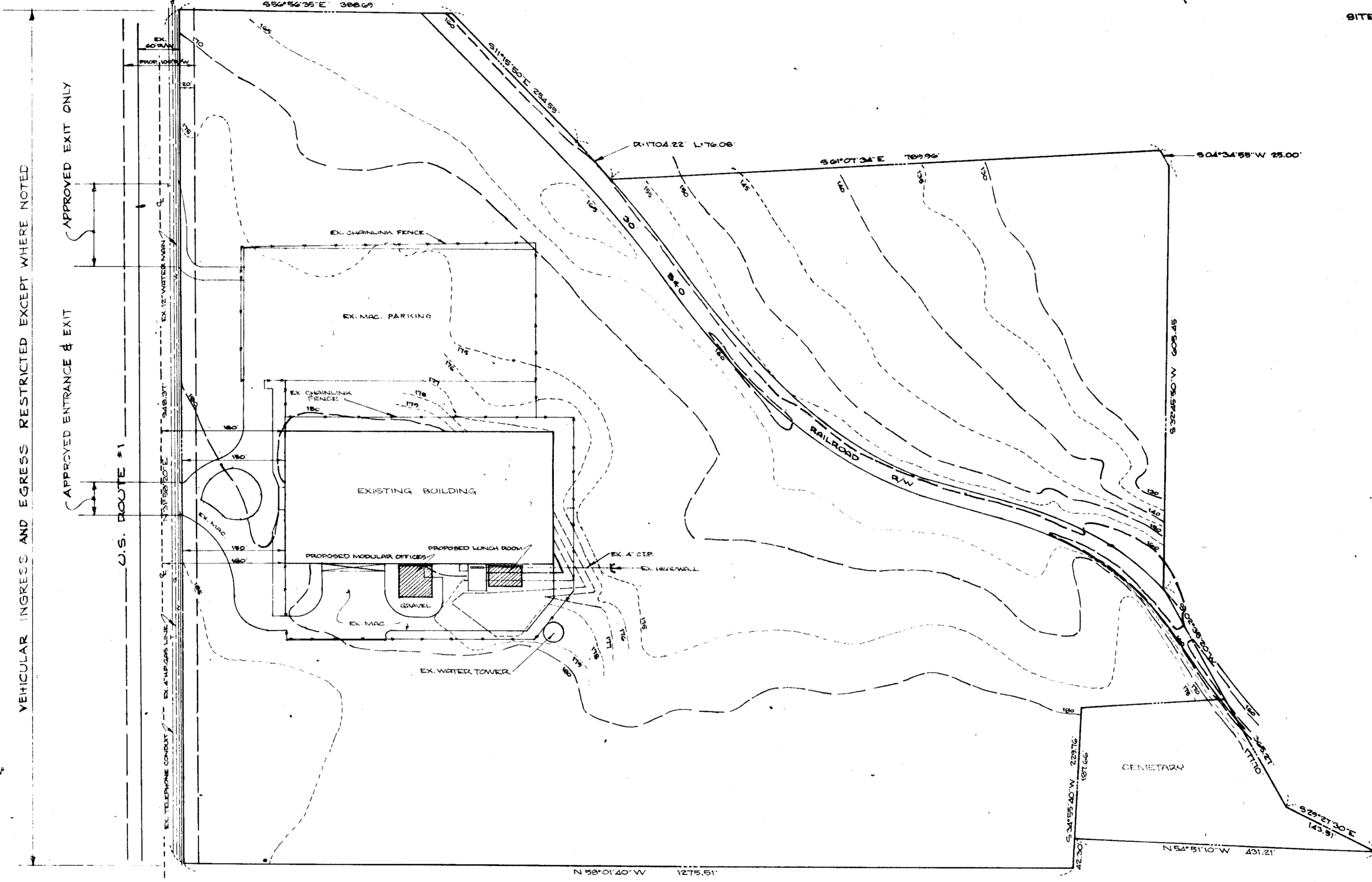
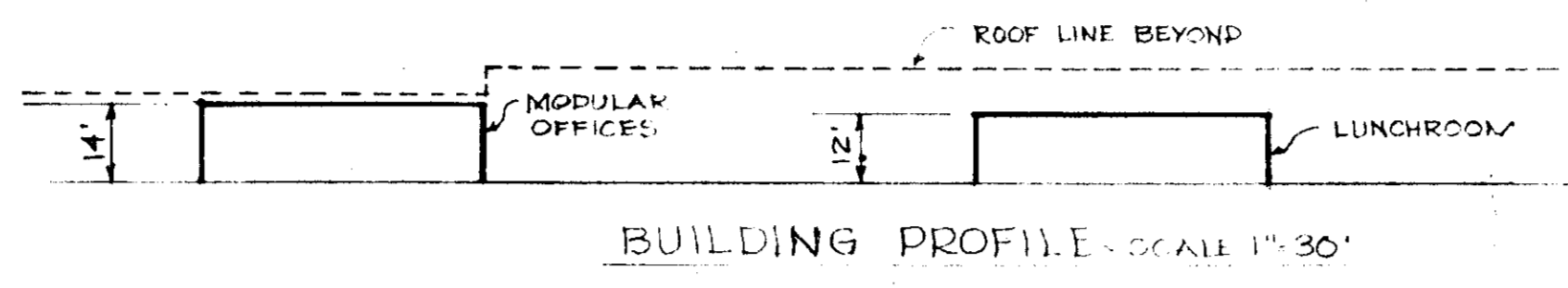
I CERTIFY THAT ALL DEVELOPMENT AND CONSTRUCTION WILL BE DONE ACCORDING TO THIS PLAN OF DEVELOPMENT & THE PLAN FOR EROSION & SEDIMENT CONTROL, AND I ALSO AUTHORIZE PERIODIC ON-SITE INSPECTIONS BY THE HOWARD SOIL CONSERVATION DISTRICT OR THEIR AUTHORIZED AGENTS, AS ARE DEEMED NECESSARY. DEVIATION FROM THIS PLAN WILL NOT BE MADE UNLESS AUTHORIZED BY THE HOWARD SOIL CONSERVATION DISTRICT.

Irvin E. Metzler 6-12-79
 SIGNATURE OF DEVELOPER DATE

I HEREBY CERTIFY THAT THIS PLAN FOR EROSION & SEDIMENT CONTROL REPRESENTS A PRACTICAL & WORKABLE PLAN BASED ON MY PERSONAL KNOWLEDGE OF THE SITE CONDITIONS & THAT IT WAS PREPARED IN ACCORDANCE WITH THE REQUIREMENTS OF THE HOWARD SOIL CONSERVATION DISTRICT.

Louis A. Spittel 6/13/79
 SIGNATURE OF ENGINEER DATE

LOUIS A. SPITTEL



SEDIMENT CONTROL NOTE:
 NO SEDIMENT CONTROL MEASURES NECESSARY BECAUSE NO GRADING IS NECESSARY. ALL CONSTRUCTION WILL BE ON PAVED AREAS.

STORM DRAINAGE NOTE:
 COEFFICIENT OF RUNOFF (C) WILL NOT CHANGE FOR DRAINAGE AREA INVOLVED. NO ADDITIONAL STORM DRAINAGE MEASURES ARE NECESSARY.

PARKING NOTE:
 OFFICES & LUNCH ROOM TO BE USED BY EXISTING AMERICAN INSTRUMENT CO. PERSONNEL ONLY. NO ADDITIONAL PARKING REQUIRED.

SITE ANALYSIS:
 AREA: 34,875 SQ. FT.
 ZONING: M1 & M2
 EMPLOYEES: 227
 FLOOR SPACE: 79,180 SQ. FT.
 PARKING SPACES REQUIRED: 147
 PARKING SPACES PROVIDED: 307

OWNER:
 AMERICAN INSTRUMENT COMPANY
 2299 WASHINGTON BLVD.
 U.S. ROUTE #1
 SARASOTA, MARYLAND 20863

DEVELOPER:
 SAME AS ABOVE

ENGINEER: LOUIS A. SPITTEL, INC.
 8231 MAIN STREET
 ELICOTT CITY, MD. 21243

NOTE:
 THERE ARE NO SANITARY OR FOOD HANDLING SERVICES TO BE PROVIDED IN THE PROPOSED ADDITIONS.

APPROVED
 DIVISION OF LAND DEVELOPMENT

HOWARD COUNTY, MARYLAND
 DATE 6-7-79

BUILDING ADDITION/REVISION TO SDP-74-100

SITE PLAN
 AMERICAN INSTRUMENT COMPANY
 2299 WASHINGTON BOULEVARD (U.S. ROUTE #1)
 6TH ELECTION DISTRICT HOWARD COUNTY, MD
 APRIL 17, 1979 SCALE: 1" = 100'
 TAX MAP 47, PLOU 145

SDP-79-137