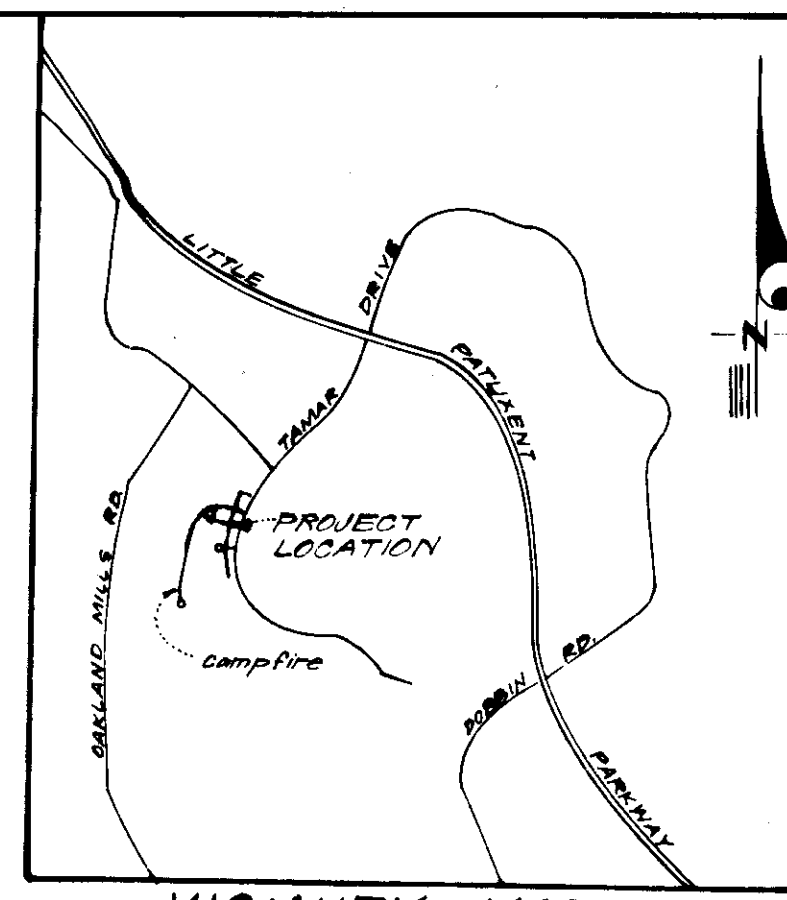


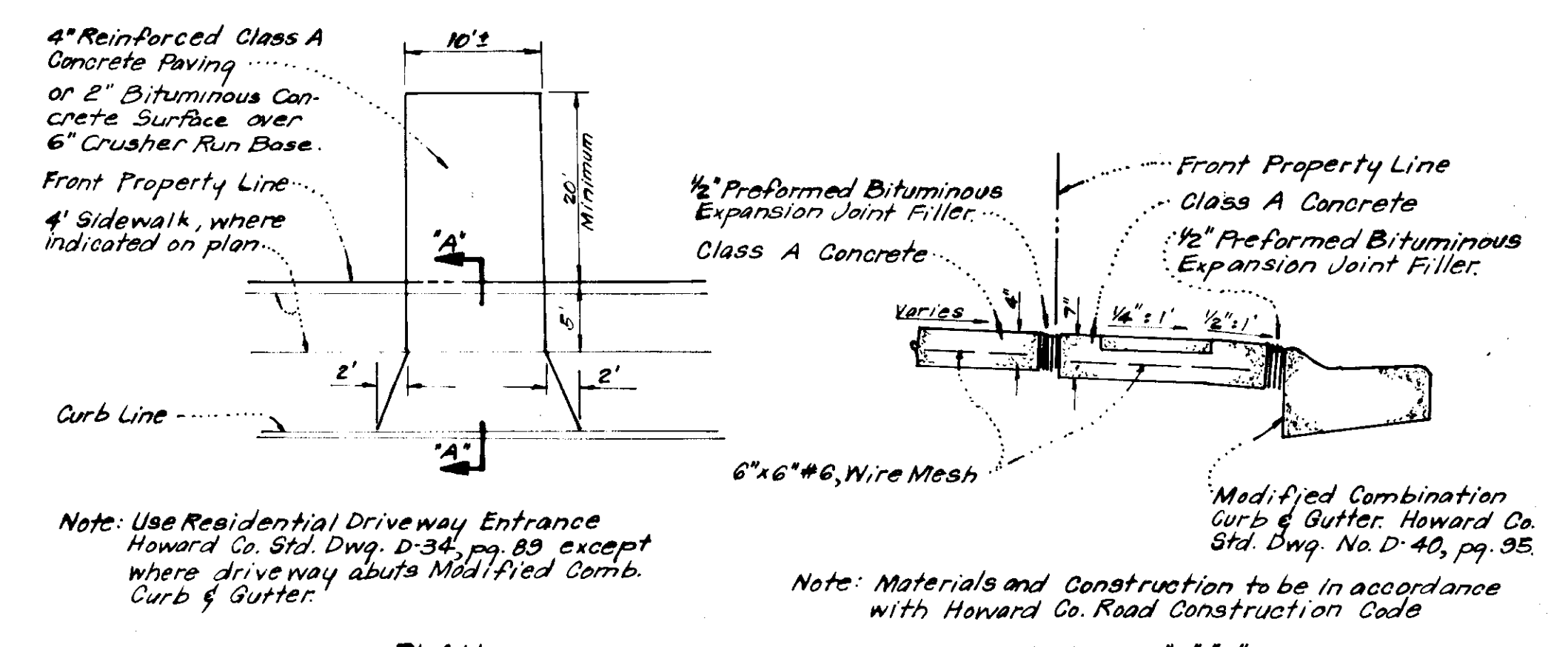
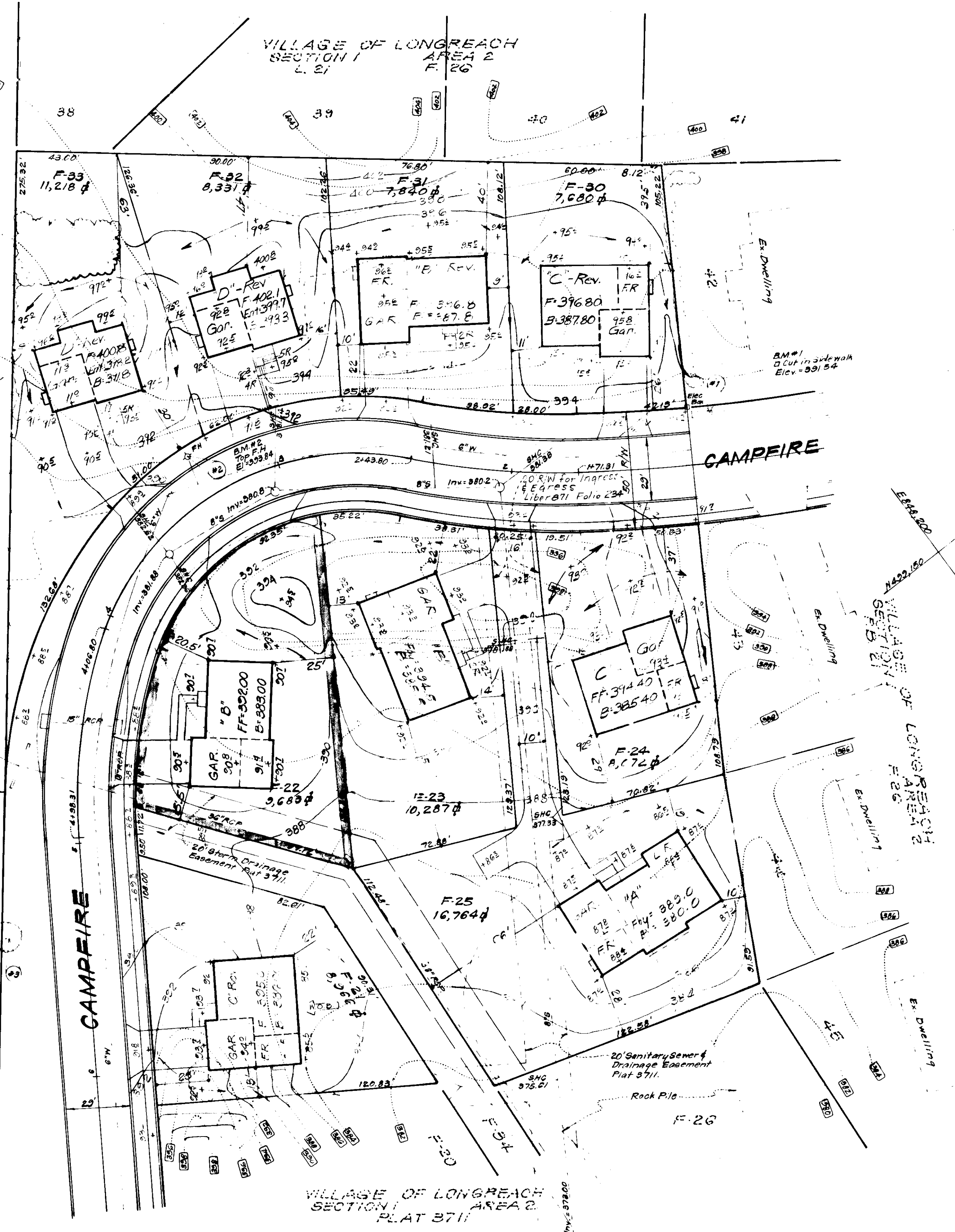
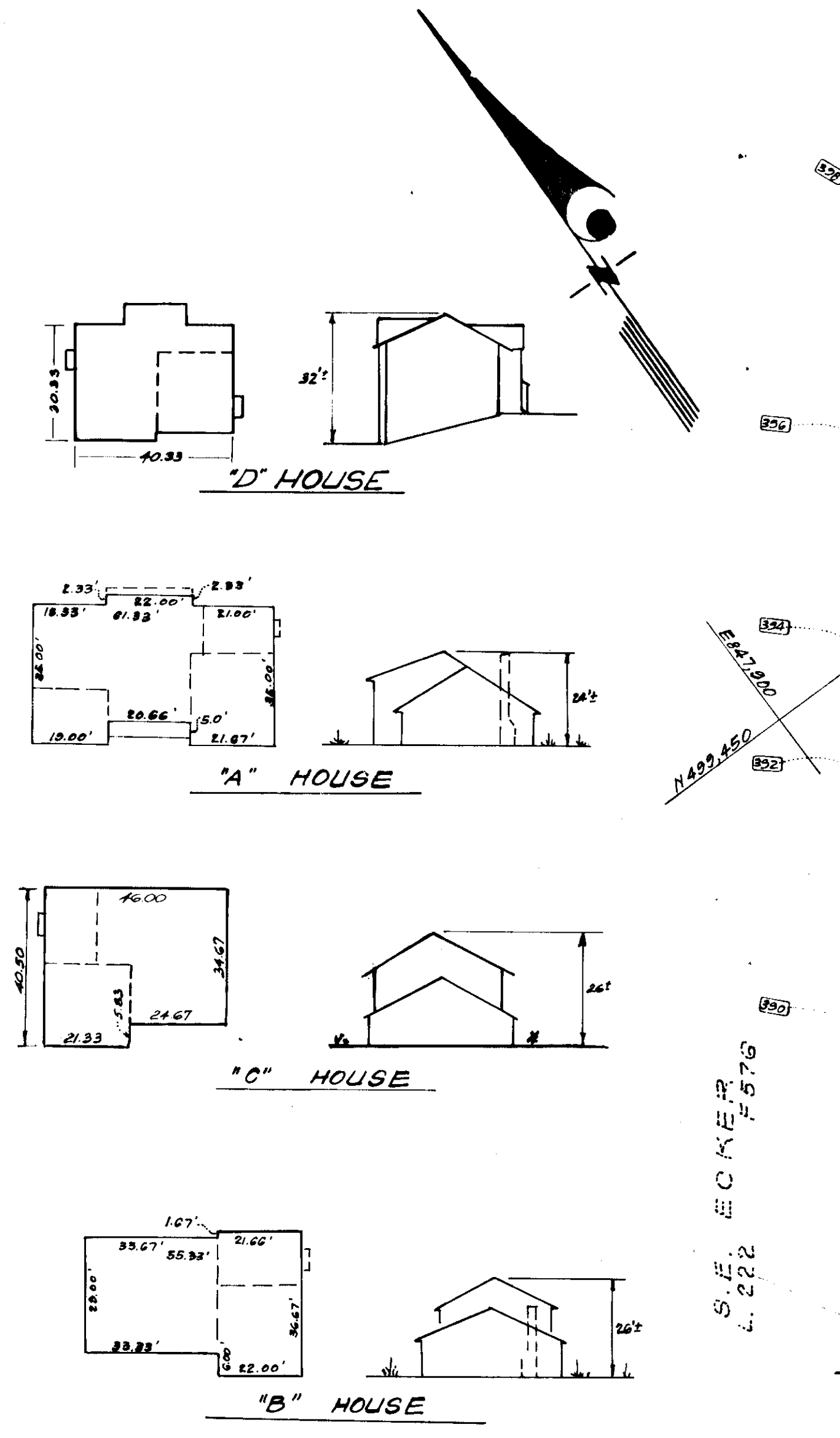
LEGEND

- 1. Contour Interval 2 FT.
- 2. Existing Contour
- 3. Proposed Contour
- 4. Spot Elevation
- 5. Direction of Drainage
- 6. Ex. Trees to be Retained
- 7. Yard Requirements: Front: 20 Ft. on 50' Wide Street
30 Ft. on 60' Wide Street
Side: 7.5' (Min.)



GENERAL NOTES

1. The Land included in this Plan is zoned New Town (S.F.M.D.)
2. The Lots shown on this Plan are covered by Final Development Plan Phase 83-A recorded in Plat Book 20 at Folios 146 & 147.
3. All coordinates are based on Maryland State Grid System. Elevations are based on U.S. Coast and Geodetic Survey Mean Sea Level Datum of 1929.
4. The Area covered in this submission is located on Tax Map No. 36.
5. The Total Area included in this submission is 0.222 Acres.
6. Campfire is public and existing.
7. Any damage to county owned Right of Ways or Paving shall be corrected at the developer's expense.



SURVEYOR'S CERTIFICATE

I hereby certify that the information contained hereon is the same as shown on previously approved S.D.P. 78-65C, with the following exception:

1. House Type and Grading has been revised on Lot F-22.

I further certify that the Sediment & Erosion control measures, as previously approved, will not be affected, the grading is substantially the same as originally approved, the building setbacks comply with F.D.P. Phase 83-A and the lot has the same geometric configuration as shown on the respective recorded subdivision plat.

APPROVED
DIVISION OF LAND DEVELOPMENT
HOWARD COUNTY, MARYLAND
DATE 3-12-79
JMM

2-21-79
Date
DONALD B. SACKETT
Registered Land Surveyor
Md. No. 6055

NOTE: For Bearings and Distances of Individual Lot Lines See Record Plat recorded as Plat 3711.

APPROVED FOR PUBLIC WATER AND PUBLIC SEWERAGE SYSTEMS, HOWARD COUNTY HEALTH DEPARTMENT
DATE 6-1-79
COUNTY HEALTH OFFICER

APPROVED HOWARD COUNTY OFFICE OF PLANNING & ZONING
DATE 6-1-79
PLANNING DIRECTOR

APPROVED FOR PUBLIC WATER AND PUBLIC SEWERAGE, STORM DRAINAGE SYSTEMS AND PUBLIC ROADS HOWARD COUNTY DEPARTMENT OF PUBLIC WORKS
DATE 5-29-79
DIRECTOR

REVISIONS

1.	House Type & Grading Revised Lots F-32 & F-33	1-17-78
2.	House Type & Grading Revised Lots F-24 & F-30	3-15-78
3.	House Type & Grading Revised Lot F-21	10-18-78
4.	" " " " Lot F-22	2-16-79

<p>CLARK • FINEFROCK & SACKETT ENGINEERS • PLANNERS • SURVEYORS</p> <p>11315 LOCKWOOD DRIVE SILVER SPRING, MARYLAND 20904 (301) 593-3400</p>		
DESIGNED D.B.S.	REVISID SITE DEVELOPMENT PLAN LOT F-22	SCALE 1"=30'
DRAWN K.I.W.	COLUMBIA	DRAWING 1 of 1
CHECKED D.B.S.	VILLAGE OF LONGREACH SECTION 1 AREA 2 6th ELECTION DISTRICT HOWARD COUNTY, MARYLAND	JOB NO.
DATE Feb, 1979	FOR: CAMPBELL MARDALL CONSTRUCTION, INC. 5115 Hesperus Drive Columbia, Md. 21044	FILE NO. 1305-X
SDP-79-102c		See Also: 1209-5E