

Consister Down Lighting  
Progress 5625 with Lexon Prismatic  
lens & cover, 120/240 V, 25 amps  
400 watts, with a cone influence  
of 35' Radius.  
Location of lights are approx  
one foot over each door and loading  
bay and are shown thus: Ⓢ

LOT 3  
SIELING INDUSTRIAL CENTER  
P.B. 24 F. 27

PARCEL "Z-2"  
1.473 Acres

OFFICE & WAREHOUSE  
FF = 365.80

Grading on Parcel Z 1  
to be done by others.

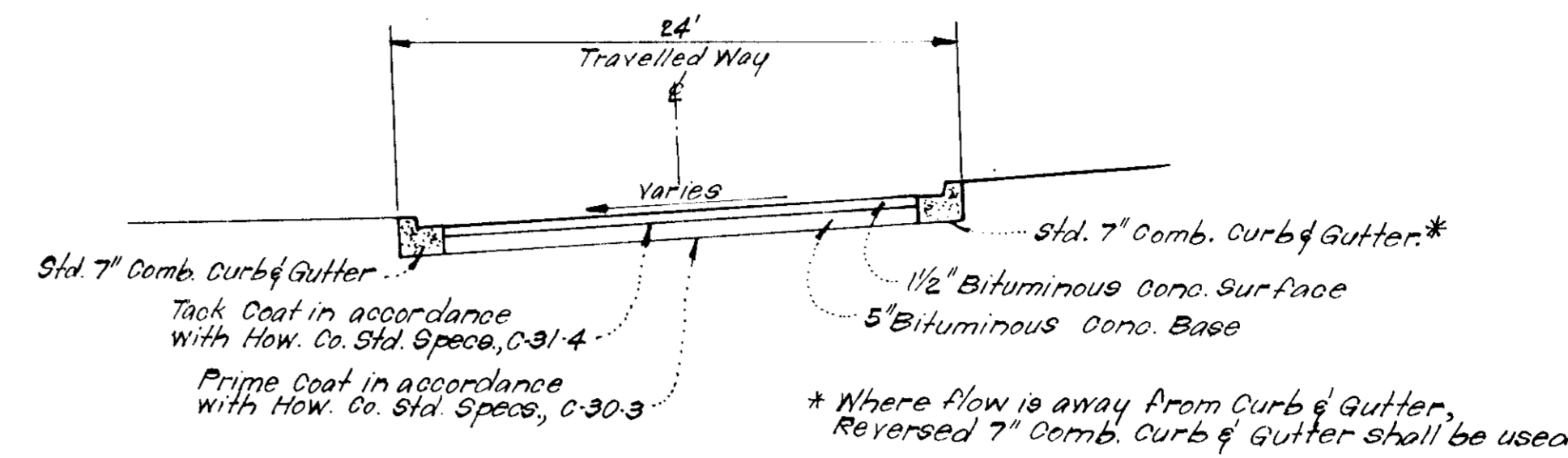
PARCEL Z 1  
SIELING INDUSTRIAL CENTER

MENDENHALL COURT

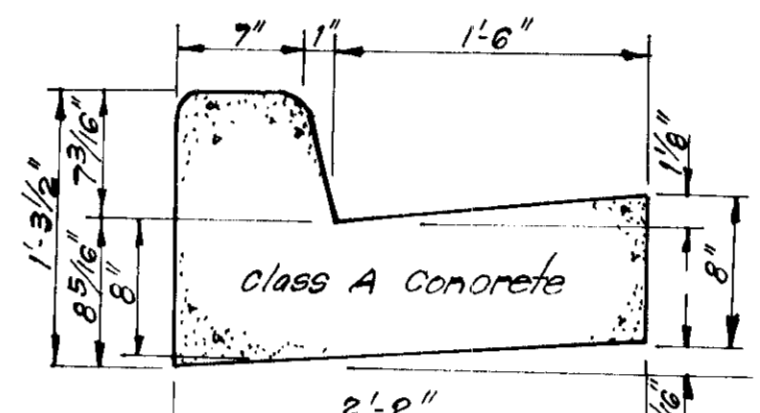
BENCH MARK  
Top of Fire Hydrant  
Elev. 340.66

Storm Water Management Notes:

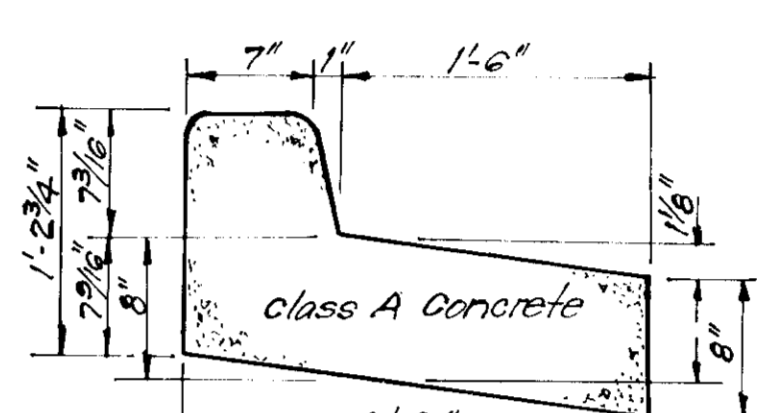
- Storm Water Management to be provided on roof of proposed building. Contractor to provide 3" of storage over entire roof area, with a total release rate of .35 cfs. Roof to be provided with multiple outlets and free overflows above the 3" of storage to allow for rapid release of storm water should the flow controls become clogged with debris.
- All Corrugated Metal Pipe used to be 18 gage.
- Slope of swale from edge of paving on western side of basin to be 2.2% or flatter.



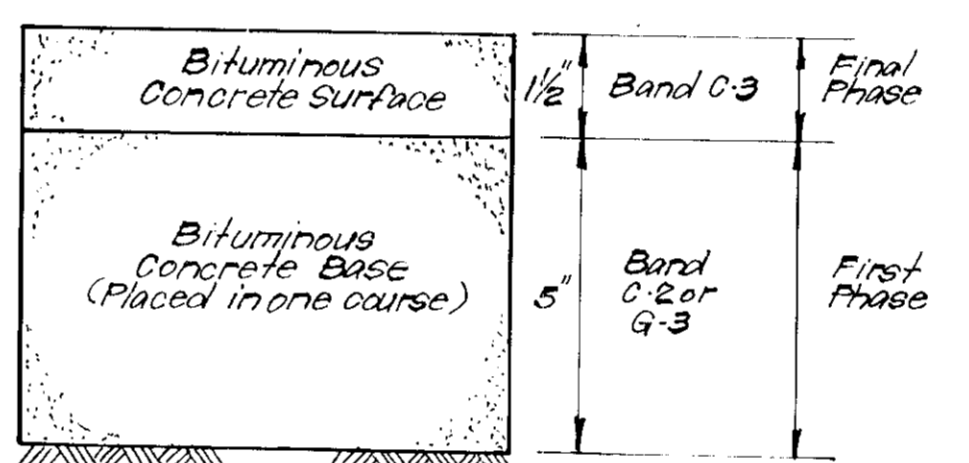
TYPICAL PAVING SECTION - PRIVATE DRIVE  
No Scale



STANDARD 7" COMBINATION CURB & GUTTER  
No Scale

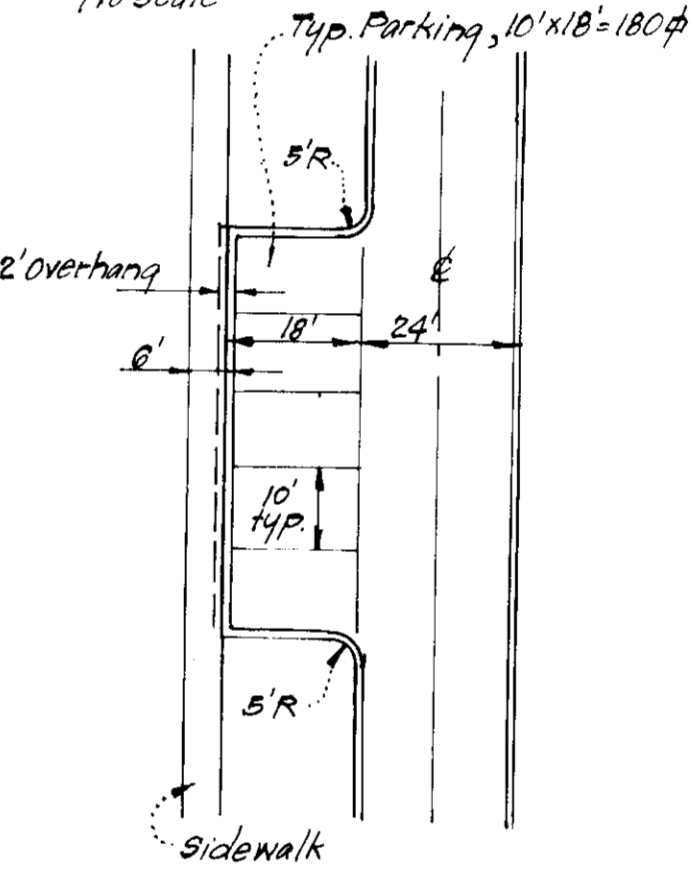


REVERSE 7" COMBINATION CURB & GUTTER  
No Scale



Clearing and Grading Article C-1  
Subgrade Article 0-2  
Base Course Article 0-31 or 0-33  
Surface Course Article 0-31  
To be constructed in accordance with the Howard County Road Construction Code and Specifications.

PAVING SECTION FOR PUBLIC ROADS AND ENTRANCES TO PUBLIC ROADS  
No Scale



TYPICAL PARKING  
No Scale

GENERAL NOTES:

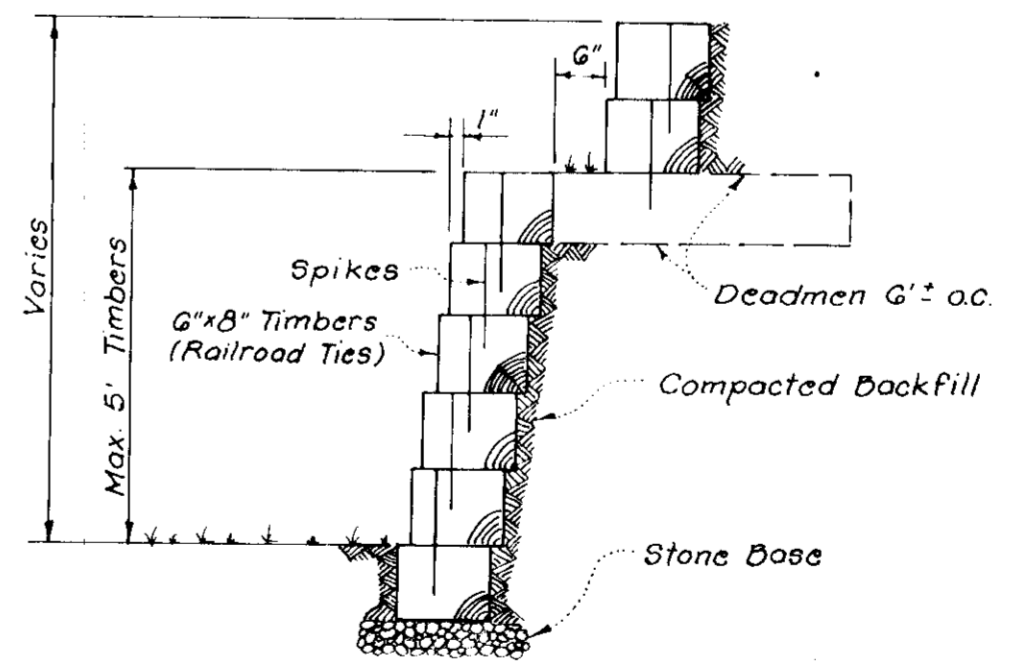
- The Land included in this plan is zoned New Town Employment Industrial.
- The lot shown on this plan is covered by Final Development Plan Phase 117 recorded in Plat Book 20, Folio 28.
- All coordinates are based on traverse controls for Columbia established by Maps Inc., in 1965 by Purdum & Jeschke in 1968 which controls were tied to Maryland Bureau of Control Survey monuments and to U.S. Coast & Geodetic Survey Monuments in the Columbia area.
- The area covered in this submission is located on Tax Map N. 36.
- The total area included in this plan is 1.473 Acres.
- All roadways are privately owned and maintained.
- Any damage to county owned rights of way or paving shall be corrected at the developer's expense.
- All materials and construction to be in accordance with Howard Co. Road Construction Code and Specs.
- Public Water and Sewer to be utilized. Water and Sewer House Connections shall be installed in accordance with Contract # 2836 D W 49 as approved by Howard Co. Bureau of Engineering.
- Installation of All Traffic Control Devices shall be in accordance with the 1971 Edition of The Manual of Uniform Traffic Control Devices.
- No Retail Area included in this plan.

SITE ANALYSIS:

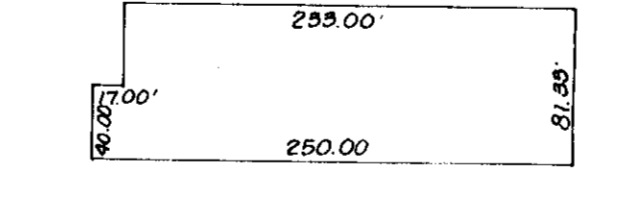
- Zoning: New Town (Industrial)
- Number of Parking Spaces Required: 8 office; 11 warehouse
- Number of Parking Spaces Provided: 18 office; 18 warehouse
- Building Coverage shown: (30% = 12,630 sq ft)
- Topography and Boundary taken from actual field survey.
- Maximum number of warehouse employees = 21
- Area of office space = 3,750 sq ft  
Area of warehouse space = 15,880 sq ft

LEGEND:

- Contour Interval 2 Ft.
- Existing Contour - - - - - 370
- Proposed Contour - - - - - 370
- Spot Elevation +70'
- Direction of Drainage
- Exist. Trees to be Retained. 15" RCP
- Prop. Storm Drainage 15" RCP
- Exist. Storm Drainage
- Std. 7" Combination Curb & Gutter
- Reverse 7" Comb. Curb & Gutter



TIMBER RETAINING WALL  
No Scale



TYPICAL BUILDING PLAN  
No Scale

APPROVED  
PLANNING BOARD  
OF HOWARD COUNTY  
DATE 3-28-79



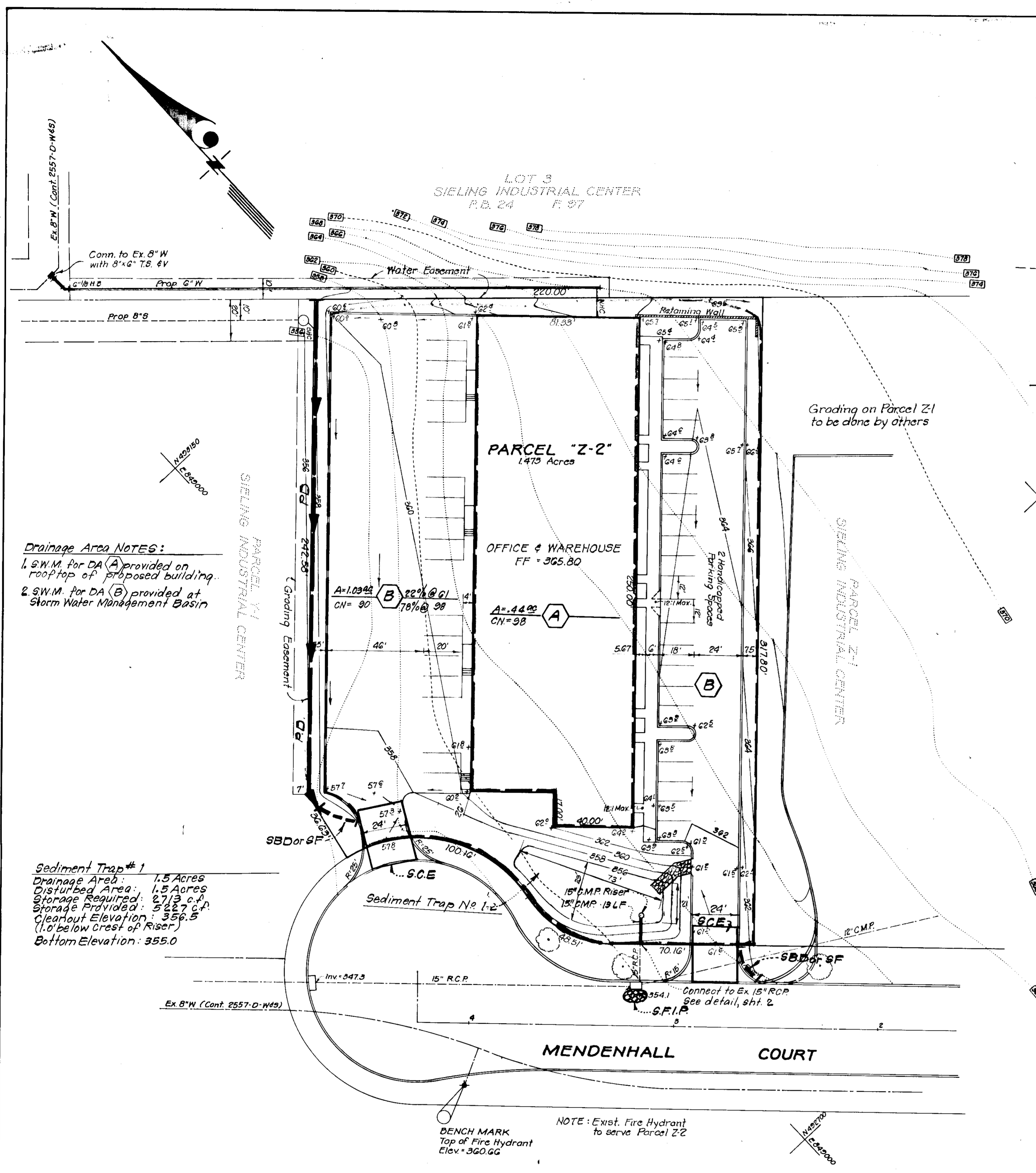
Note: For Bearings & Distances see Plat 4192.

<b>CLARK • FINEFROCK &amp; SACKETT</b> ENGINEERS • PLANNERS • SURVEYORS 11315 LOCKWOOD DRIVE SILVER SPRING, MARYLAND 20904 (301) 593-3400		
DESIGNED J.M.E.	SITE DEVELOPMENT PLAN COLUMBIA "Z-2"	SCALE 1" = 30'
DRAWN J.M.E. K.I.W.	SIELING INDUSTRIAL CENTER SECTION 1 AREA 1	DRAWING 1 of 4
CHECKED J.M.E.	6TH ELECTION DISTRICT HOWARD COUNTY, MARYLAND	JOB NO.
DATE Jan, 1979	For: QUINCY DEVELOPMENT COMPANY 5051 Wheatstone Road Columbia, Maryland 21044	FILE NO. 78-1113-X

SDP-79-98c

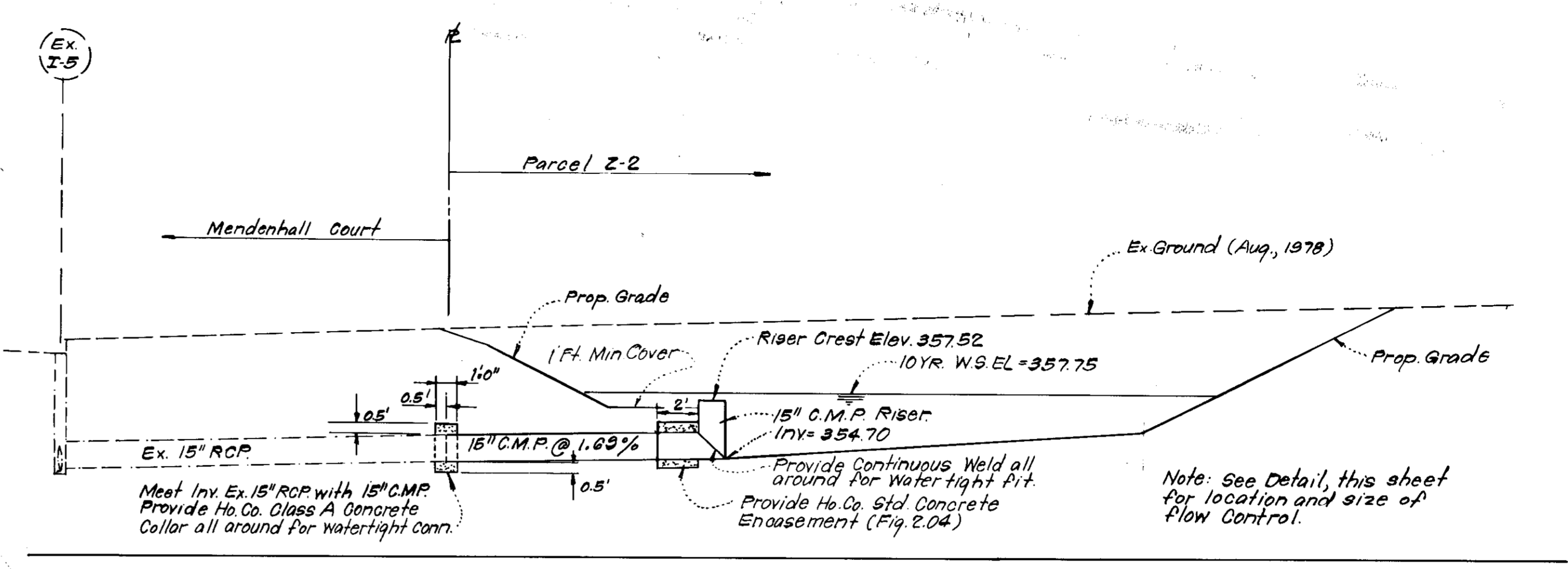
Also See H.C. 391

APPROVED FOR PUBLIC WATER AND PUBLIC SEWERAGE SYSTEMS, HOWARD COUNTY HEALTH DEPARTMENT	DATE 4-26-79
APPROVED FOR HOWARD COUNTY OFFICE OF PLANNING & ZONING	DATE 4-30-79
CHIEF DIVISION OF LAND DEVELOPMENT	DATE 1-27-79
APPROVED FOR PUBLIC WATER AND PUBLIC SEWERAGE, STORM DRAINAGE SYSTEMS AND PUBLIC ROADS HOWARD COUNTY DEPARTMENT OF PUBLIC WORKS	DATE 4-25-79
CHIEF BUREAU OF ENGINEERING	DATE 4-28-79

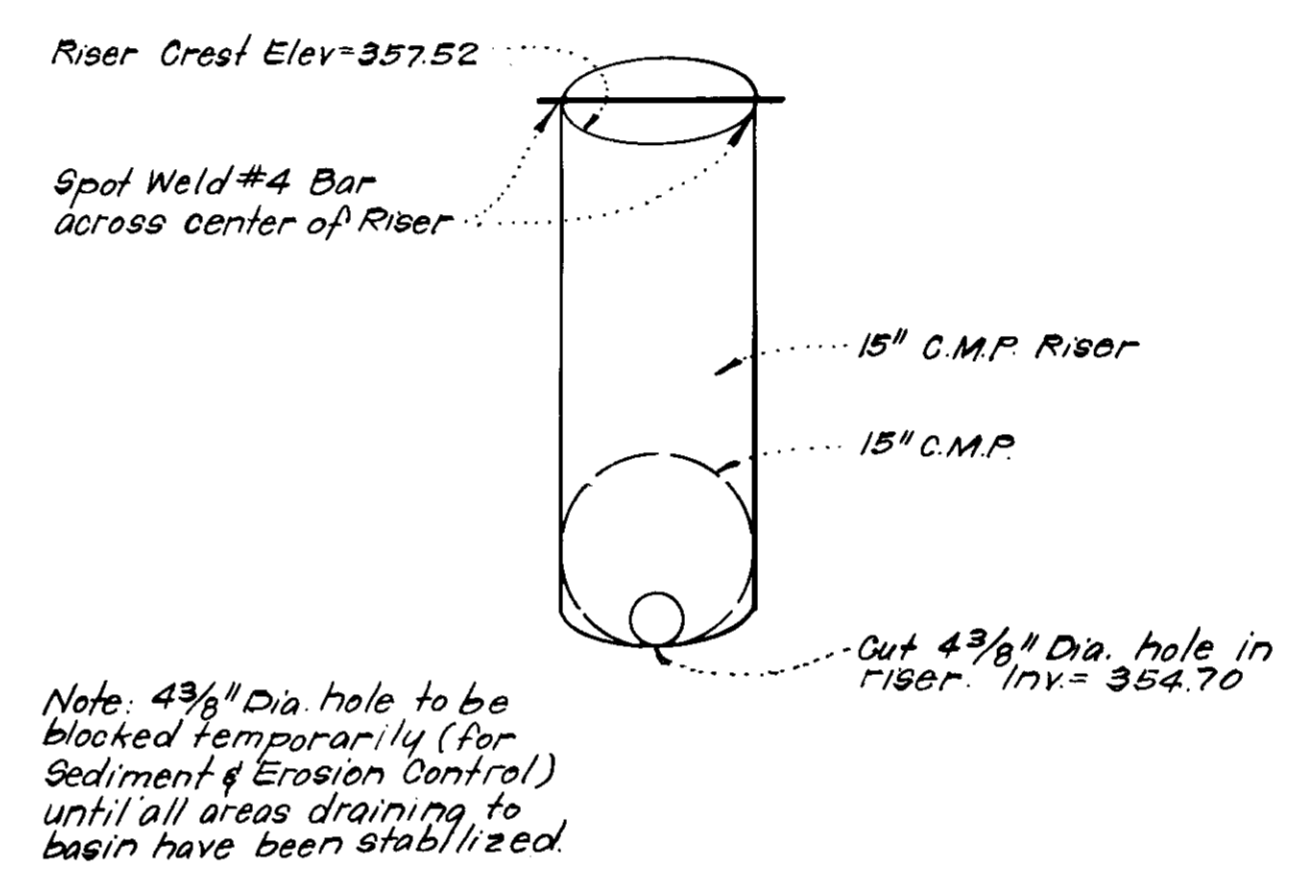


**Drainage Area NOTES:**  
 1. S.W.M. for DA (A) provided on rooftop of proposed building.  
 2. S.W.M. for DA (B) provided at Storm Water Management Basin

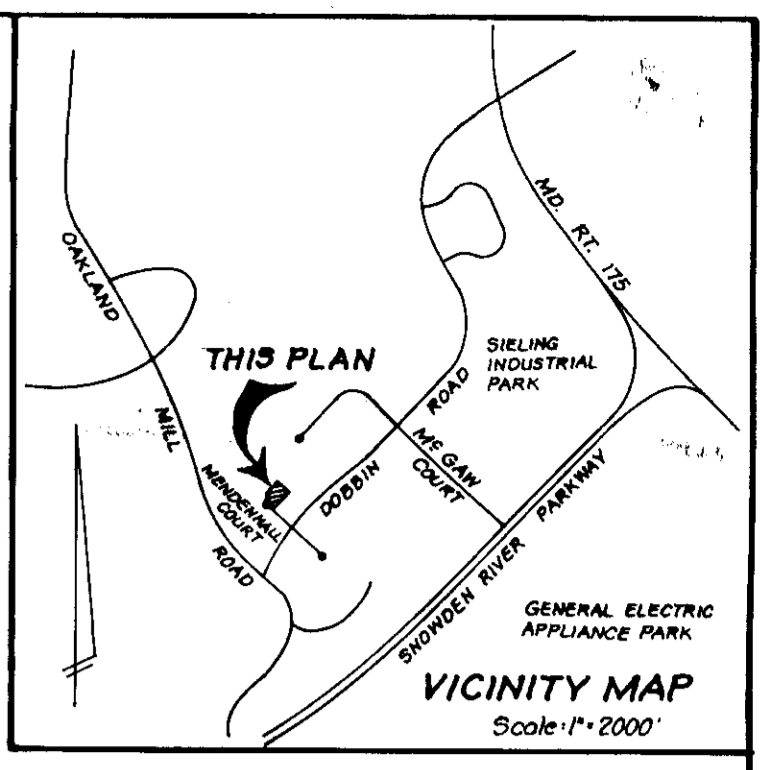
**Sediment Trap # 1**  
 Drainage Area: 1.5 Acres  
 Disturbed Area: 1.5 Acres  
 Storage Required: 5713 c.f.  
 Storage Provided: 5713 c.f.  
 Clearout Elevation: 356.5  
 (1.0' below Crest of Riser)  
 Bottom Elevation: 355.0



**STORM WATER MANAGEMENT BASIN  
 DETAIL**  
 Scale: 1"=5'



**RISER & FLOW CONTROL DETAIL**  
 No Scale



**LEGEND:**

1. Contour Interval	2 Ft.
2. Existing Contour	---
3. Proposed Contour	---
4. Spot Elevation	+708
5. Direction of Drainage	→
6. Exist. Trees to be Retained	⊙
7. Prop. Storm Drainage	---
8. Existing Storm Drainage	---
9. Std. 7" Combination Curb & Gutter	---
10. Reverse 7" Comb. Curb & Gutter	---
11. Straw Bale Dike or Silt Fence	SBD or SF
12. Stone Filter Inlet Protection	SF.I.P.
13. Stone Construction Entrance	SCE

APPROVED FOR PUBLIC WATER AND PUBLIC SEWERAGE SYSTEMS,  
 HOWARD COUNTY HEALTH DEPARTMENT  
 COUNTY HEALTH OFFICER: *Robert W. Rehm* DATE: 4-26-79

APPROVED HOWARD COUNTY OFFICE OF PLANNING & ZONING  
 PLANNING DIRECTOR: *John F. Newman* DATE: 4-25-79

APPROVED FOR PUBLIC WATER AND PUBLIC SEWERAGE,  
 STORM DRAINAGE SYSTEMS AND PUBLIC ROADS  
 HOWARD COUNTY DEPARTMENT OF PUBLIC WORKS  
 DIRECTOR: *John F. Newman* DATE: 4-25-79

Reviewed for... Howard S.C.D.  
 Name  
 and meets Technical Requirements  
*Wayne Ray* 4-11-79  
 Signature Date  
 U.S. Soil Conservation Service

THIS DEVELOPMENT PLAN IS APPROVED  
 FOR SOIL EROSION AND SEDIMENT  
 CONTROL BY THE HOWARD SOIL  
 CONSERVATION DISTRICT.

*Robert W. Rehm*  
 Approved 4-11-79  
 Date

**DEVELOPER'S CERTIFICATE**  
 I certify that all development and/or construction  
 will be done according to this plan of development  
 and plan for Erosion and Sediment Control, and I  
 authorize periodic on-site inspection by the Howard  
 Soil Conservation District or their authorized agents  
 as are deemed necessary. Deviation from this plan  
 will not be made unless authorized by the Howard  
 Soil Conservation District.

*Logan Jennings*  
 Signature 2-14-78  
 Date

**ENGINEER'S CERTIFICATE**  
 I hereby certify that this plan for Erosion and  
 Sediment Control represents a practical and workable  
 plan based on my personal knowledge of the site  
 conditions and that it was prepared in accordance  
 with the requirements of the Howard Soil Conserva-  
 tion District.

*G. Nelson Clark*  
 Signature 2-14-79  
 Date

**APPROVED**  
 PLANNING BOARD  
 OF HOWARD COUNTY  
 DATE: 3-28-79



**CLARK • FINEFROCK & SACKETT**  
 ENGINEERS • PLANNERS • SURVEYORS  
 11315 LOCKWOOD DRIVE SILVER SPRING, MARYLAND 20904 (301) 593 3400

**SITE DEVELOPMENT PLAN  
 SEDIMENT & EROSION CONTROL PLAN  
 PROFILES & DETAILS  
 PARCEL Z-2  
 COLUMBIA  
 SIELING INDUSTRIAL CENTER  
 SECTION 1  
 AREA 1  
 6TH ELECTION DISTRICT  
 HOWARD COUNTY, MARYLAND**

DESIGNED: RUS  
 DRAWN: J.M.E., K.L.W.  
 CHECKED: R.U.S.  
 DATE: Feb. 1979

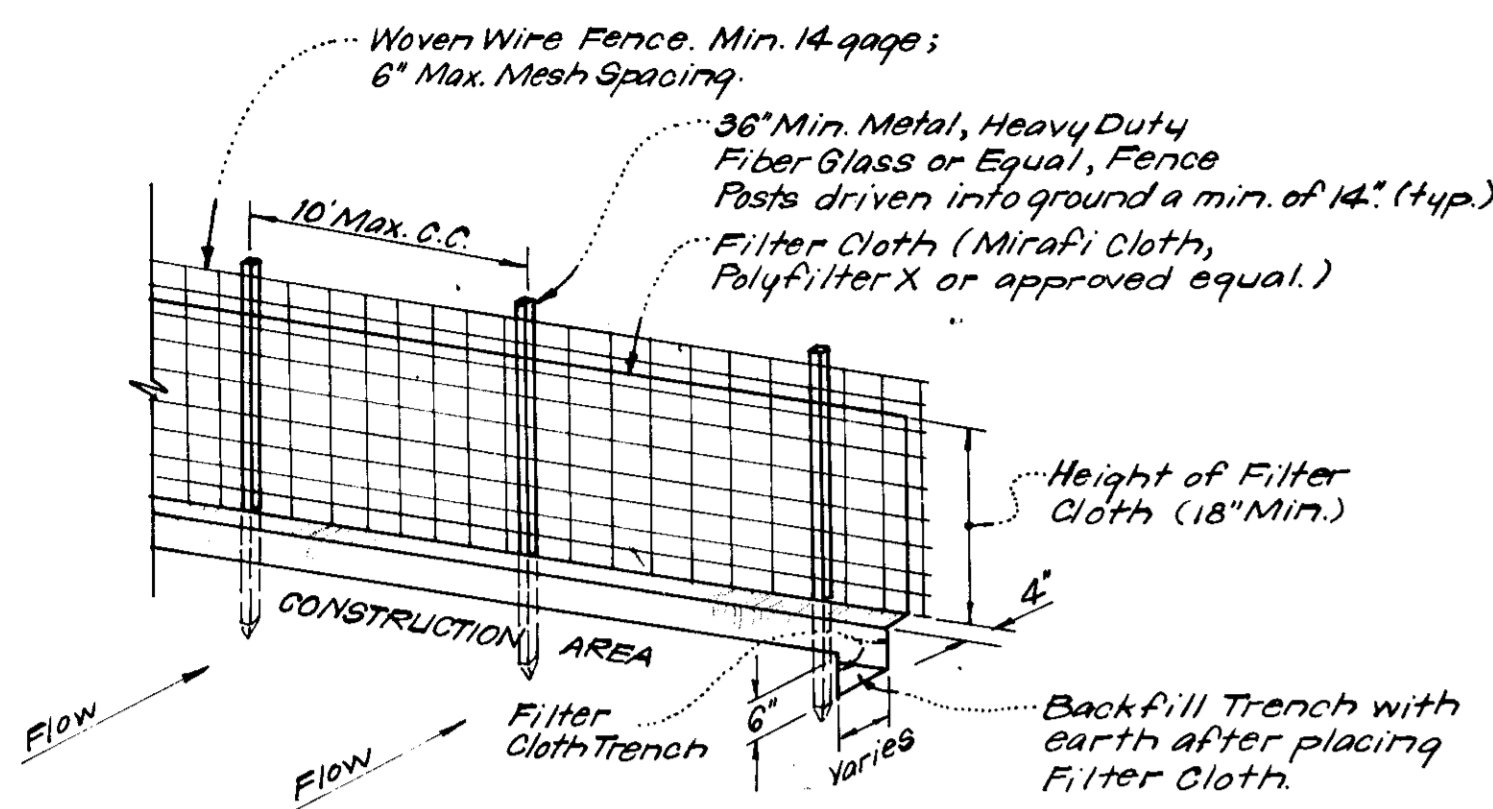
SCALE: 1"=30'  
 DRAWING: 2 of 4  
 JOB NO.:  
 FILE NO.: 78-113-X

For: QUINCY DEVELOPMENT COMPANY  
 5051 Whetstone Road  
 Columbia, Maryland 21044



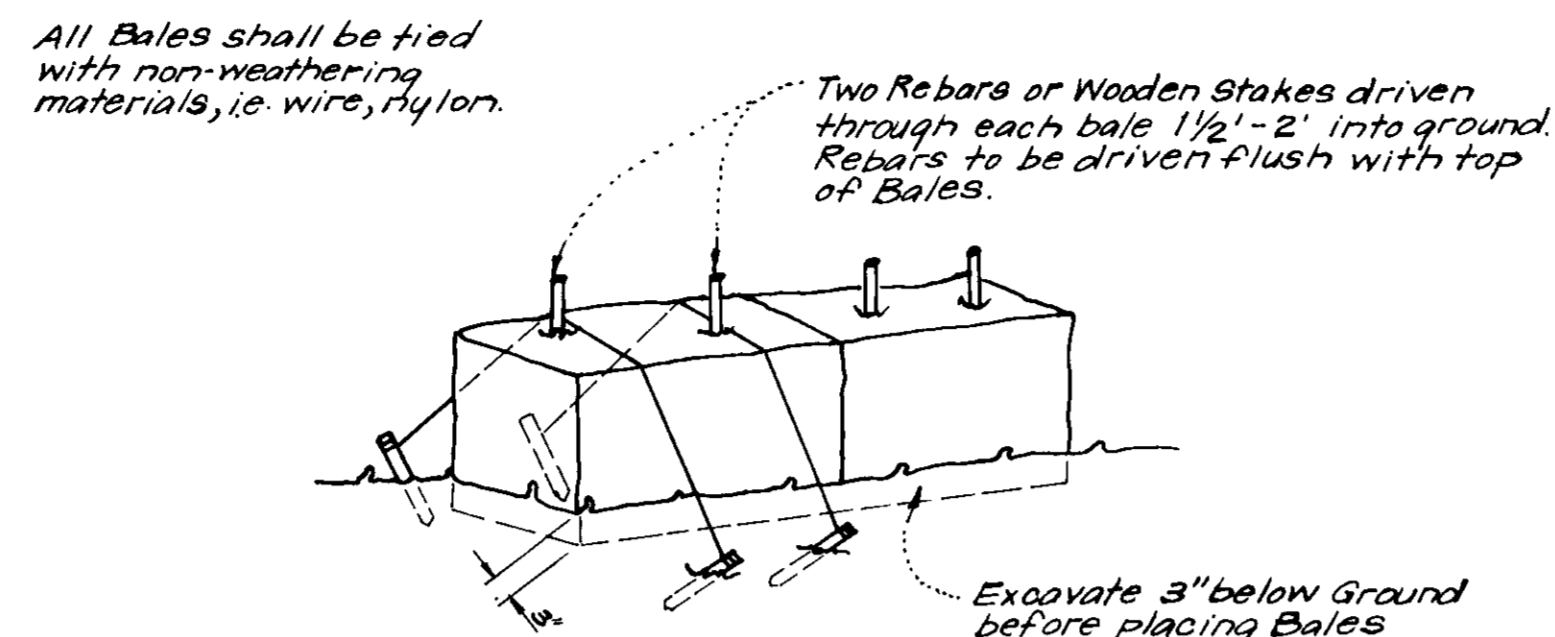
**GENERAL NOTES**

- Grading Permits shall be obtained prior to installation of Sediment Control & Grading.
- All Sediment and Erosion Control Measures will be installed and stabilized according to this plan prior to any other grading, clearing or disturbance of the existing surface of the site. See Note # 6 for stabilization except that the seed mixture will be annual rye applied at a rate of 1.4 lbs/1000 sq. ft.
- Notify the Bureau of Inspections and Permits at least 24 hours before starting any work.
- All Sediment Control Practices to conform to the "Standards and Specifications for Soil Erosion and Sediment Control in Developing Areas" and shall be adjusted to meet actual field conditions.
- Stabilization of Disturbed Ground to be done as soon after construction as possible.
- All Grading shall be treated in accordance with the following Specifications:
  - Seed - certified 85% germination applied at the rate of 3 lbs/1000 sq. ft. mixture - 40% Kentucky Blue, 20% Chewy Fescue, 20% Kentucky 31, and 20% annual rye.
  - Fertilizer - 10-10-10 applied at the rate of 23 lbs/1000 sq. ft. Ground Agricultural Lime or Dolomitic Lime applied at the rate of 46 lbs/1000 sq. ft.
  - Mulch - Weed free grain straw applied at the rate of 70 lbs/1000 sq. ft. Mulch shall be secured to the ground by any approved method i.e. asphalt tacks, chemical binder, wood chips, etc.
- All Structural Sediment Control Measures are to remain in place until permission for their removal has been obtained from the Bureau of Inspections and Permits.
- On Site Inspection and Maintenance of all Sediment Control Measures including clean out of sediment traps and dikes, and proper establishment of all planned vegetative measures will be the responsibility of the Developer or his representative on the site, on a continuing day to day basis.
- Protection of stabilized area from sediment runoff shall be provided by the use of an approved Sediment Control Device, i.e. straw bale, diversion dike, etc.
- The Contractor shall keep all public roads free of sediment deposits left from traffic leaving construction site.
- Site Analysis:
  - Total Area: 1.47 Acres
  - Area to be Roofed: 0.44 Acres
  - Area to be Paved: 0.80 Acres
  - Area to be Seeded: 0.23 Acres
  - Area Undisturbed: 0
- Construction Sequence:
  - Install Sediment & Erosion Control Measures
  - Grade for Storm Water Management Basin (Sediment Trap # 1) and install 15" C.M.P. (Pipe & Riser). Block 4 3/8" Dia Hole in Riser.
  - Rough grade site and excavate for foundations.
  - Install Utilities.
  - Erect Structure, Construct Curb & Gutter, parking & sidewalks.
  - Final Grade and Stabilize in accordance with note # 6.
  - Flush Storm Drains, pump storm water & sediment from Trap # 1.
  - Grade and Shape Trap # 1 to dimensions of Storm Water Manag. Basin.
  - Stabilize Basin and remove blocking from 4 3/8" Dia hole in Riser.
- It will be the developer's responsibility to provide additional Sediment & Erosion Control devices to protect stabilized areas during construction.
- Total Amount of Straw Bales or Silt Fence = 245LF.
- All slopes steeper than 3:1 shall be stabilized with crown vetch applied at a rate of 0.34 lbs/1000 sq. ft. in accordance with the above mentioned standards and specifications.
- All fill and spoil materials must come from or go to an area with approved sediment control.



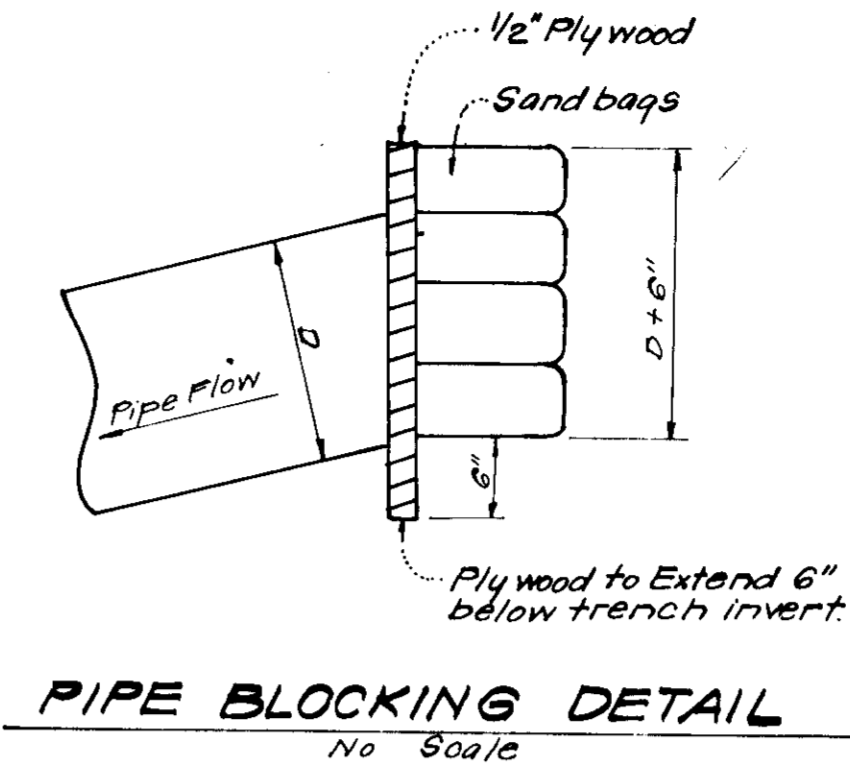
**NOTES:**  
 1. Woven Wire Fence to be fastened securely to fence posts by use of wire ties.  
 2. Filter Cloth to be fastened securely to woven wire fence by use of wire ties spaced every 24" x 24".

**SILT FENCE DETAIL (S.F.)**  
 NO SCALE

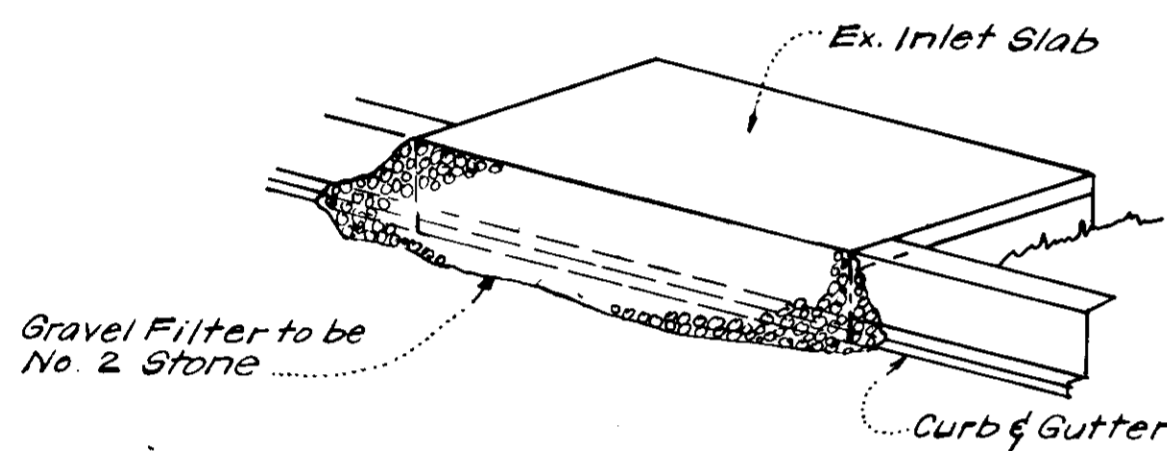


**NOTE:**  
 1. In lieu of the use of rebar each Straw Bale may be fastened to ground with pegs (4 per bale and wire or nylon as shown above).

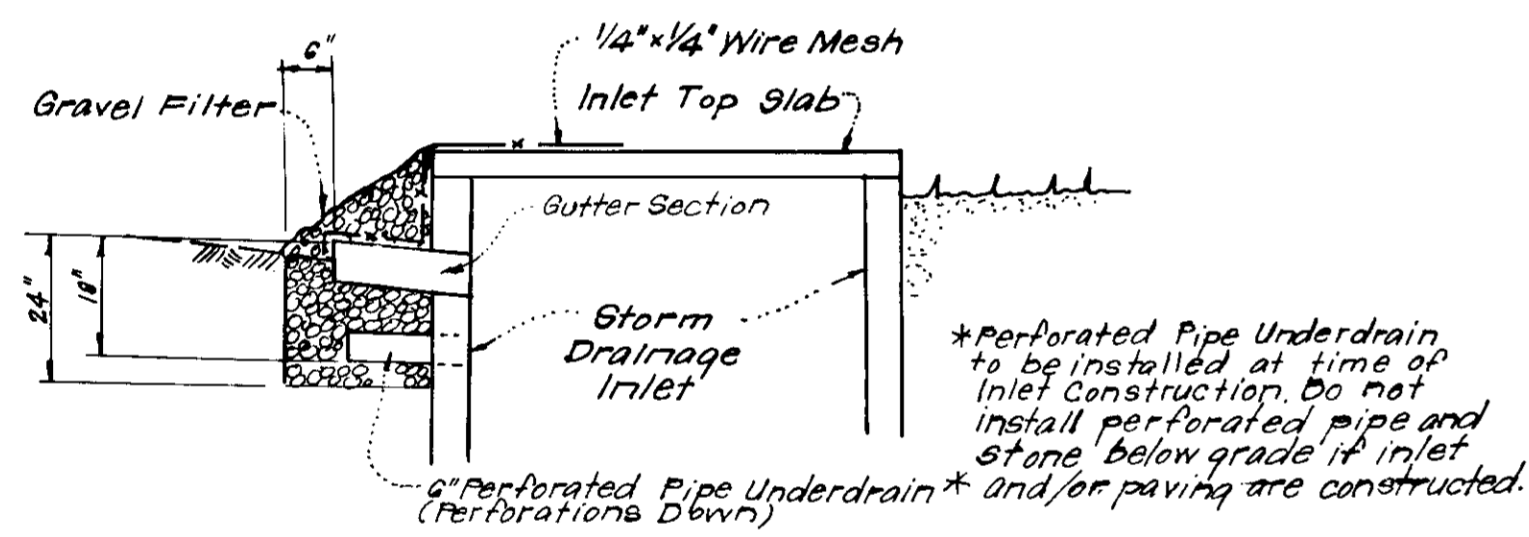
**TYPICAL STRAW BALE DETAIL (S.B.D.)**  
 NO SCALE



**PIPE BLOCKING DETAIL**  
 NO SCALE

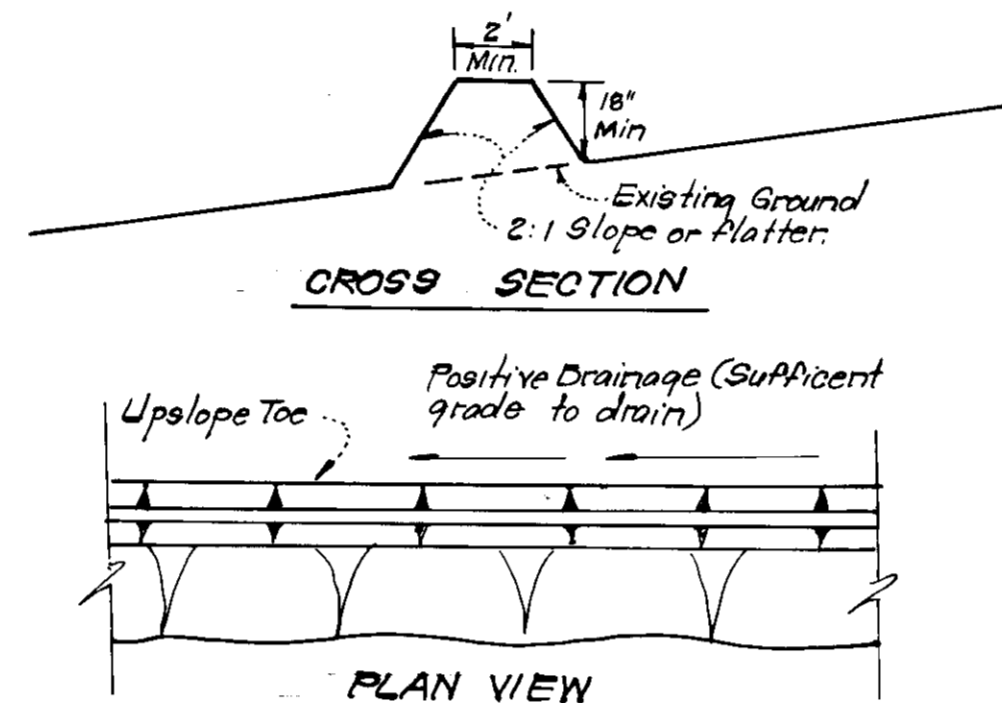


**ISOMETRIC VIEW**

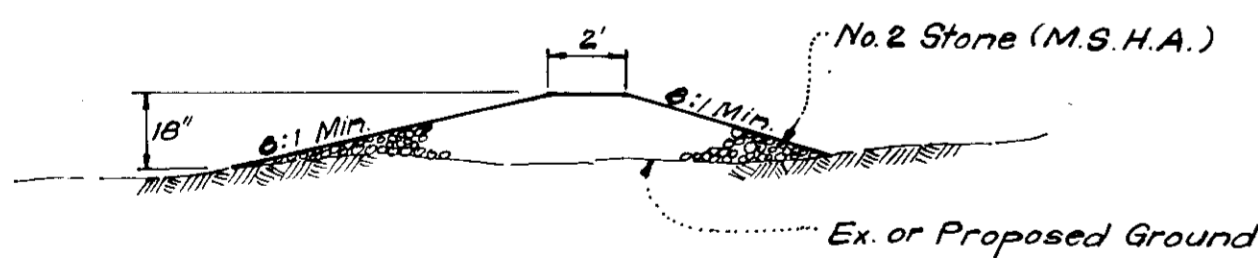


**SECTION VIEW**

**STONE FILTER INLET PROTECTION DETAIL (S.F.I.P.)**  
 NO SCALE



**TYPICAL PERIMETER DIKE DETAIL (P.D.)**  
 NO SCALE



**SECTION VIEW**

**STONE CONSTRUCTION ENTRANCE DETAIL (S.C.E.)**  
 NO SCALE

APPROVED FOR PUBLIC WATER AND PUBLIC SEWERAGE SYSTEMS, HOWARD COUNTY HEALTH DEPARTMENT	4-26-79
APPROVED: HOWARD COUNTY OFFICE OF PLANNING & ZONING	4-30-79
APPROVED FOR PUBLIC WATER AND PUBLIC SEWERAGE, STORM DRAINAGE SYSTEMS AND PUBLIC ROADS HOWARD COUNTY DEPARTMENT OF PUBLIC WORKS	4-25-79
APPROVED FOR PUBLIC WATER AND PUBLIC SEWERAGE, STORM DRAINAGE SYSTEMS AND PUBLIC ROADS HOWARD COUNTY DEPARTMENT OF PUBLIC WORKS	4-25-79

Reviewed for Howard Name S.C.D.  
 and meets Technical Requirements  
R. Wayne Ray Signature Date 4-11-79  
 U.S. Soil Conservation Service

THIS DEVELOPMENT PLAN IS APPROVED  
 FOR SOIL EROSION AND SEDIMENT  
 CONTROL BY THE HOWARD SOIL  
 CONSERVATION DISTRICT.

Robert W. Ziehm Signature Date 4-11-79

**DEVELOPER'S CERTIFICATE**

I certify that all development and/or construction  
 will be done according to this plan of development  
 and plan for Erosion and Sediment Control, and I  
 authorize periodic on-site inspection by the Howard  
 Soil Conservation District or their authorized agents  
 as are deemed necessary. Deviation from this plan  
 will not be made unless authorized by the Howard  
 Soil Conservation District.

Logan Jennings Signature Date 2-14-78

**ENGINEER'S CERTIFICATE**

I hereby certify that this plan for Erosion and  
 Sediment Control represents a practical and workable  
 plan based on my personal knowledge of the site  
 conditions and that it was prepared in accordance  
 with the requirements of the Howard Soil Conserva-  
 tion District.

G. Nelson Clark Signature Date 2-14-78

**APPROVED**  
 PLANNING BOARD  
 OF HOWARD COUNTY  
 DATE 3-28-79



<b>CLARK • FINEFROCK &amp; SACKETT</b> ENGINEERS • PLANNERS • SURVEYORS 11315 LOCKWOOD DRIVE SILVER SPRING, MARYLAND 20904 (301) 593-3400	
DESIGNED <u>R.V.S.</u>	SCALE As Shown
DRAWN <u>K.I.W.</u>	DRAWING 3 of 4
CHECKED <u>R.J.S.</u>	JOB NO.
DATE Feb, 1979	FILE NO. 78-113-X
SITE DEVELOPMENT PLAN SEDIMENT & EROSION CONTROL DETAILS PARCEL "2-2" <b>COLUMBIA</b> SIELING INDUSTRIAL CENTER SECTION 1 8TH ELECTION DISTRICT HOWARD COUNTY, MARYLAND FOR: QUINCY DEVELOPMENT CORP 5051 Whitestone Road Columbia, Maryland 21044	

SDP-79-98.



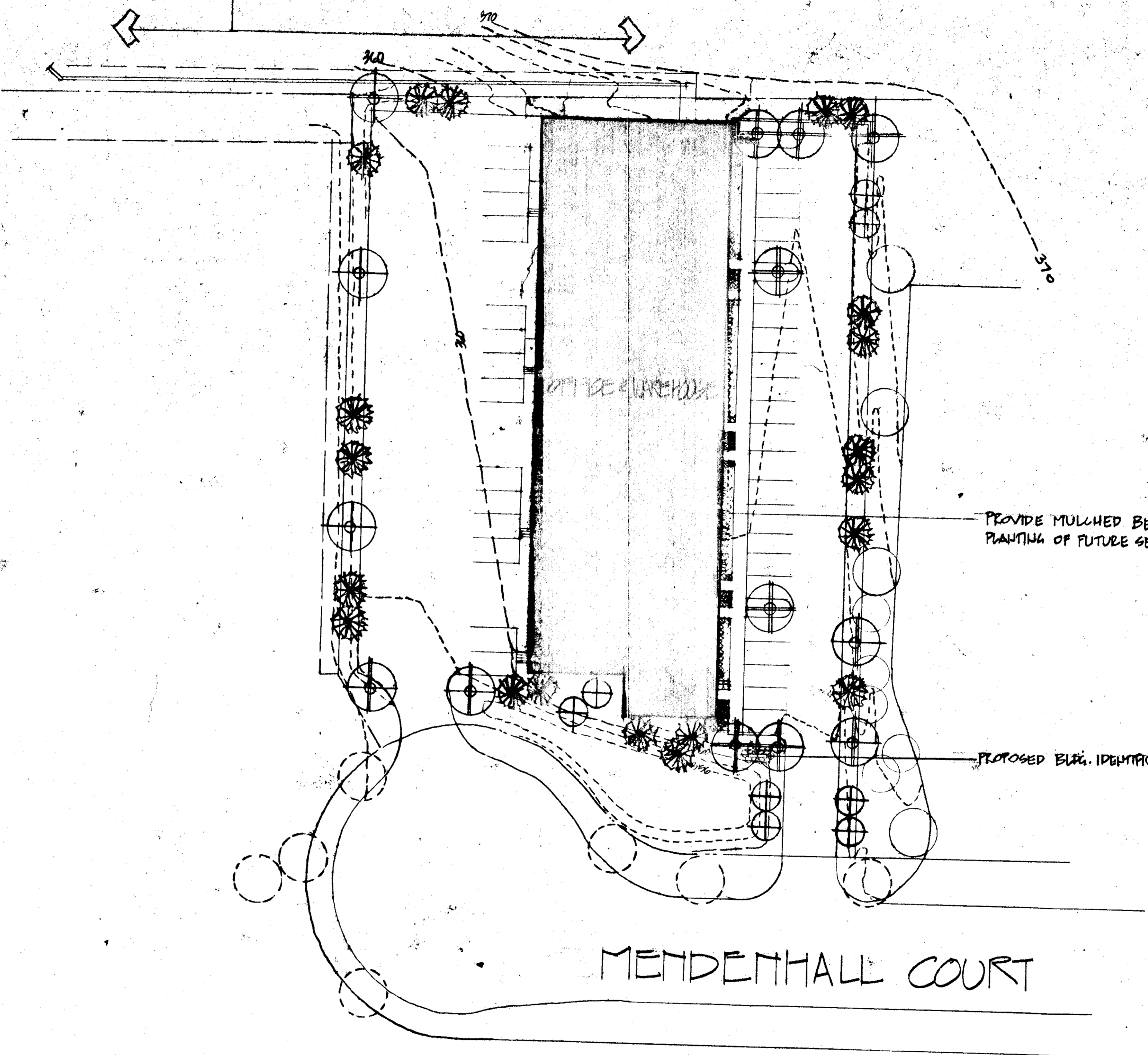
**PLANT LIST**

KEY	PLANT NAME	SIZE	QUANT.	REMARKS
<b>BUILDERS REQUIREMENTS</b>				
<b>SHADE TREES</b>				
⊙	ACER RUBRUM (RED MAPLE) (SPEC. QUANT.)	2 1/2" CAL. 12'-4" HT.	3	BAD FULL HEADS
⊙	ACER SACCHARIN (SUGAR MAPLE) (SPEC. QUANT.)	2 1/2" CAL. 12'-4" HT.	4	BAD FULL HEADS
⊙	FRAXINUS LAUREATA (GREEN ASH) (SPEC. QUANT.)	2 1/2" CAL. 12'-4" HT.	7	BAD FULL HEADS
<b>FLOWERING TREES</b>				
⊕	MALUS 'RADANT' (RED BLOSSOM) (SPEC. QUANT.)	8'-10" HT.	8	BAD FULL HEADS
<b>EVERGREEN TREES</b>				
⊗	PRUNUS NIGRA (AUSTRIAN PINE) (SPEC. QUANT.)	6'-8" HT.	20	BAD FULL HEADS
<b>BUILDERS OPTION</b>				
<b>SHRUBS</b>				
⊗	EUCOMMIS ALATIS (BURNING BUSH) (SPEC. QUANT.)	18'-24" STR. 18'-24" HT.	53	BAD FULL HEADS
⊗	SIBYRNICUS ALBODIANA (SIBYRNIC BURNING BUSH) (SPEC. QUANT.)	18'-24" STR. 18'-24" HT.	75	BAD FULL HEADS

NOTE: LOCATION AND SELECTION OF ALL PROPOSED PLANT MATERIAL IS TO BE APPROVED IN THE FIELD BY THE LANDSCAPE ARCHITECT. ALL PLANT MATERIAL IS TO BE GUARANTEED BY THE LANDSCAPE CONTRACTOR FOR ONE FULL GROWING SEASON AFTER THE LAST PLANT HAS BEEN INSTALLED AND APPROVED BY THE LANDSCAPE ARCHITECT. ALL PLANT MATERIAL AND ALL PLANTING METHODS ARE TO BE IN CONFORMANCE WITH THE "PLANTING SPECIFICATIONS" LATEST EDITION. ALL PLANT MATERIAL IS TO BE NURSERY GROWN IN ACCORDANCE WITH "THE U.S.A. STANDARD FOR NURSERY STOCK", LATEST EDITION. CONTRACTOR AND/OR OWNER IS TO VERIFY CORRECT LOCATION OF ALL UNDERGROUND UTILITIES IN THE FIELD BEFORE PROCEEDING WITH THE INSTALLATION OF ANY OF THE PROPOSED PLANT MATERIAL.

NOTE: CULTIVATE ALL BEDS TO A DEPTH OF 6" AND SPREAD A 4" LAYER OF MULCH OVER ALL BEDS. IN PREPARATION FOR THE PLANTING OF FUTURE GROUND COVERS AND SEASONAL FLOWERS.

NOTE:  
SEE H.R.D. DRAWINGS FOR LOCATIONS OF EXISTING BUFFER PLANTING / STREET TREES IN THIS AREA.



No.	Date	Per	Description
1	3-28-79	MCA	REVIEW AS PER 1143 COMM 1976

APPROVED FOR PUBLIC WATER AND PUBLIC SEWERAGE SYSTEMS,  
HOWARD COUNTY HEALTH DEPARTMENT  
*James Bodden* 4-26-79  
COUNTY HEALTH OFFICER DATE

APPROVED HOWARD COUNTY OFFICE OF PLANNING & ZONING  
*James Bodden* 4-30-79  
PLANNING DIRECTOR DATE

*John M. Mendenhall* 4-27-79  
CHIEF DIVISION OF LAND DEVELOPMENT DATE

APPROVED FOR PUBLIC WATER AND PUBLIC SEWERAGE  
STORM DRAINAGE SYSTEMS AND PUBLIC ROADS  
HOWARD COUNTY DEPARTMENT OF PUBLIC WORKS  
*John F. Neumann* 4-25-79  
DIRECTOR DATE

*W.C. Lambert* 4-26-79  
CHIEF BUREAU OF ENGINEERING DATE

APPROVED  
PLANNING BOARD  
OF HOWARD COUNTY  
DATE 3-28-79

PARCEL "2-2"  
**COLUMBIA**  
SIELING INDUSTRIAL CENTER  
SECTION I AREA I  
8th ELECTION DISTRICT  
HOWARD COUNTY, MARYLAND  
For QUINCY DEVELOPMENT COMPANY  
5051 Whetstone Road  
Columbia, Maryland 21044



**M.C. ANACKER ASSOCIATES, INC.**  
Landscape Architects  
Planners  
P.O. Box 82, Columbia, Maryland, 21044

Project: ESI-51, A.1 - QUINCY DEVELOPMENT  
PARCEL "2-2" 1.473 ACRES

Subject: LANDSCAPE DEVELOPMENT PLAN

DWG No. S.I.C./I/1, PARCEL 2-2  
4 of 4

Date: 3-15-79 Dwn By: MCA  
Scale: 1" = 30'-0" Ck By: MCA  
Des By: MCA App By: MCA  
CCF No.

SDP-79-98c