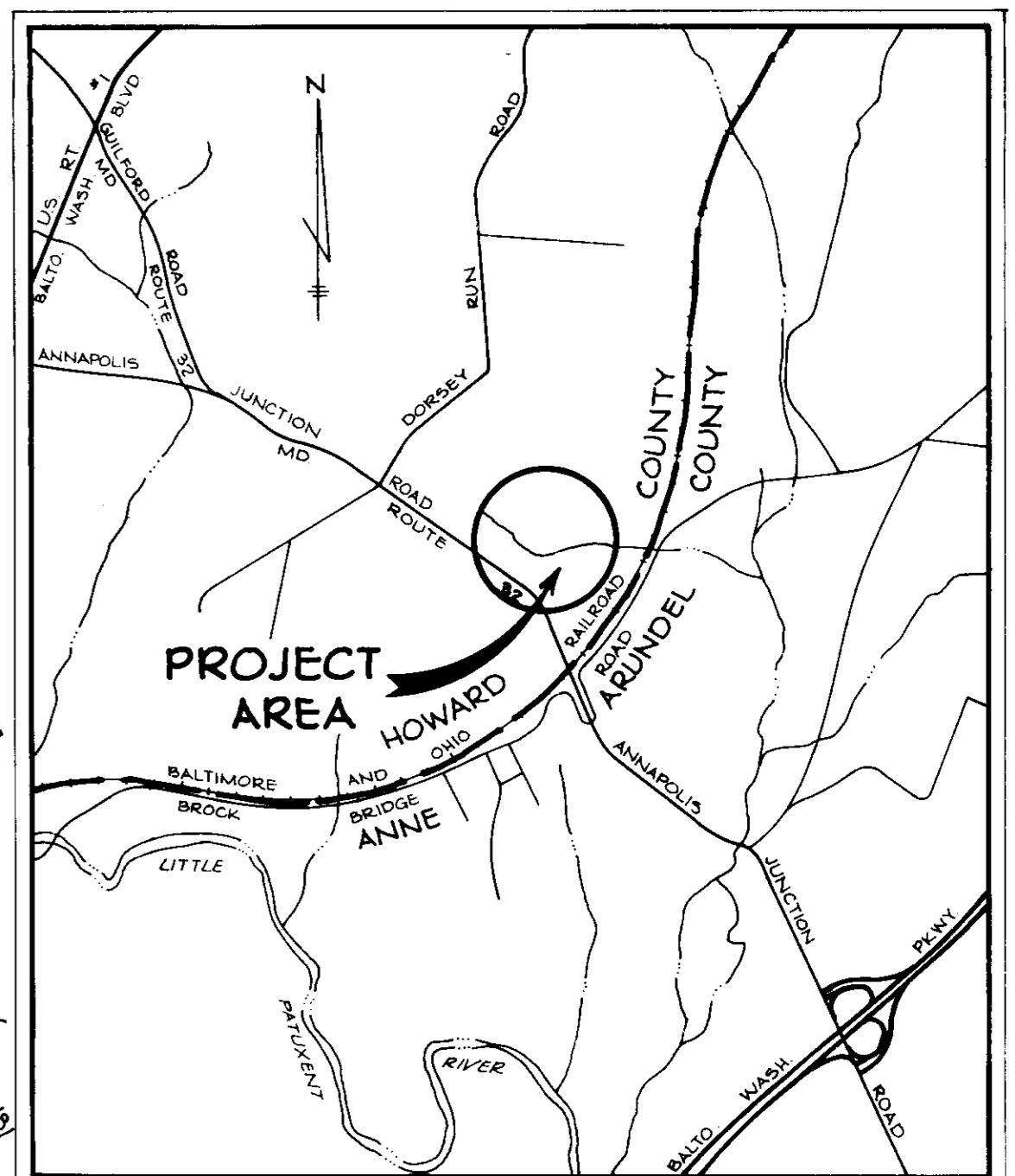


SITE ANALYSIS

AREA OF PARCEL:	6.137 AC.
PRESENT ZONING:	M-2 WAREHOUSE/OFFICE
PROPOSED USE:	
TOTAL AREA OF:	
OFFICE USE:	1506 SQ. FT.
WAREHOUSE USE:	6060 SQ. FT.
RETAIL SALES USE:	0 SQ. FT.
NUMBER OF EMPLOYEES ON MAJOR SHIFT:	
OFFICE:	8
WAREHOUSE:	4
RETAIL:	0
PARKING SPACES REQUIRED:	6
PARKING SPACES PROVIDED:	6
OPEN SPACE:	NONE



VICINITY MAP
Scale 1"=2000'
PROPERTY OF
STATE OF MARYLAND
DEPARTMENT OF CORRECTION
346/518
ZONE M-2

APPROVED: FOR PUBLIC WATER, STORM DRAINAGE SYSTEMS AND PUBLIC ROADS.

HOWARD COUNTY DEPARTMENT OF PUBLIC WORKS
John F. Nemy 2/15/79
DIRECTOR DATE
W. O. Lebot 2-20-79
CHIEF, BUREAU OF ENGINEERING DATE

APPROVED: HOWARD COUNTY OFFICE OF PLANNING AND ZONING
Thomas L. Harig 2-16-79
PLANNING DIRECTOR DATE
Abigail M. Murchison 2-16-79
CHIEF, DIVISION OF LAND DEVELOPMENT DATE

APPROVED: FOR PUBLIC WATER AND PRIVATE SEWERAGE SYSTEMS, HOWARD COUNTY HEALTH DEPARTMENT
James E. Byler 2-6-77
COUNTY HEALTH OFFICER DATE

Date	No.	Revision Description

OWNER AND DEVELOPER
HEALTH WATERS, INC.
WILLIAM D. JOHNSTON, PRESIDENT
711 W. Timonium Road
TIMONIUM, MARYLAND 21093

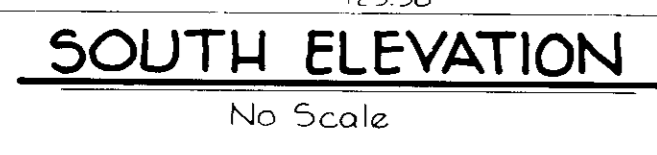
CENTURY ENGINEERING, INC.
CONSULTING ENGINEERS - PLANNERS
TOWSON, MARYLAND 21204

AREA
6th ELECTION DISTRICT, HOWARD COUNTY, MARYLAND
LIBER 432, FOLIO 365, TAX MAP 48

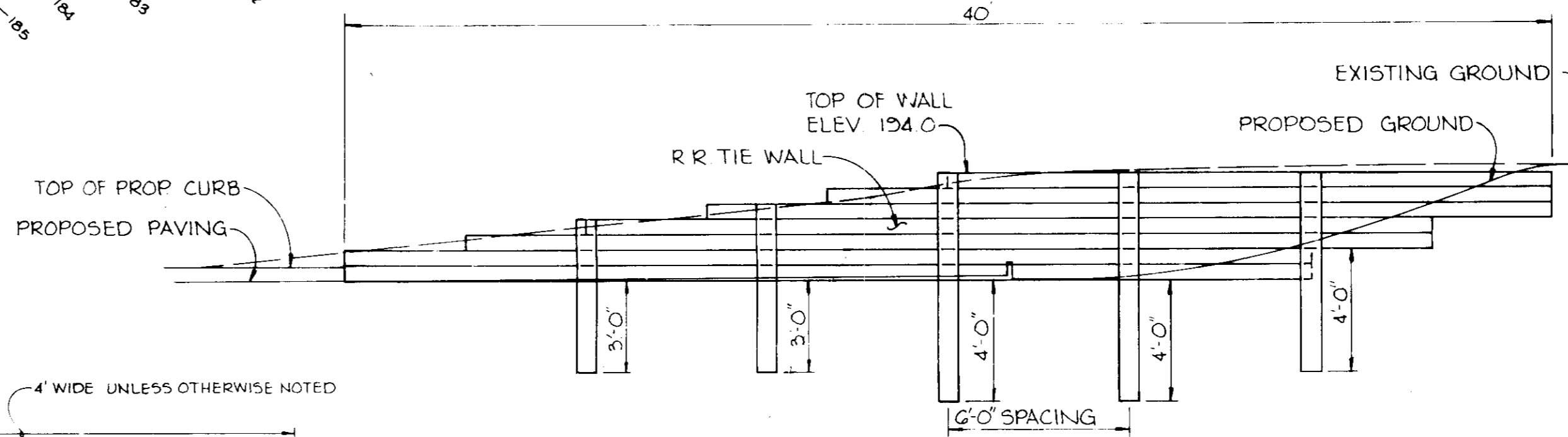
TITLE
SITE DEVELOPMENT PLAN

Des By J.B.S.	Scale AS SHOWN	Proj No 4677
Drn By F.X.T.	Date 9/21/78	Drawing No. 1 OF 2
Chk By J.K.T.	Approved	

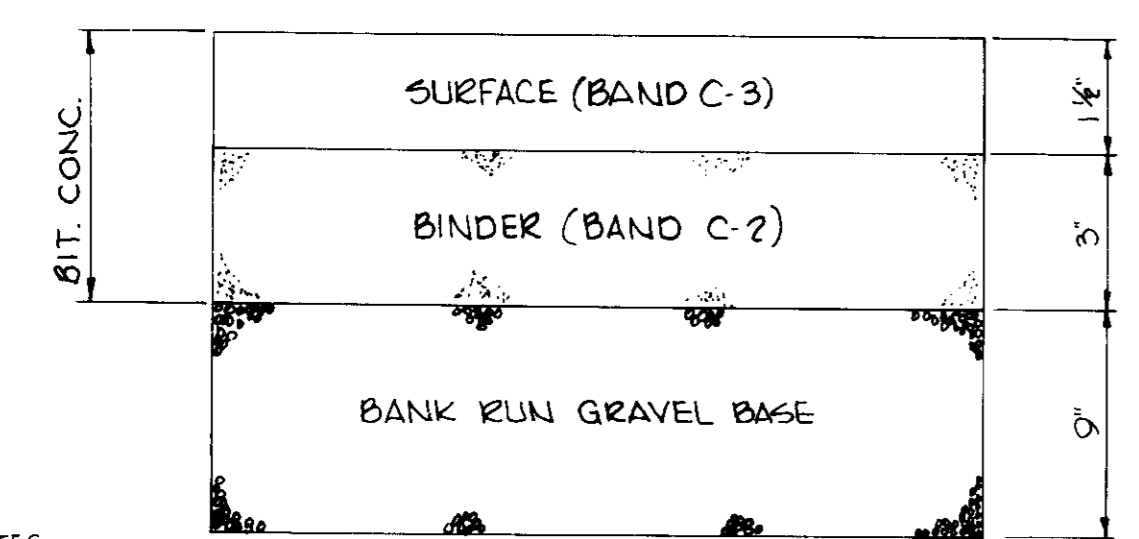
SDP-79-50 January 12, 1979



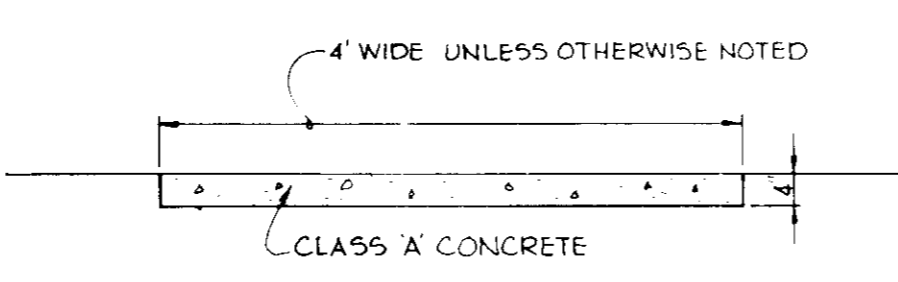
PLAN
Scale 1"=50'



DETAIL - R.R. TIE WALL

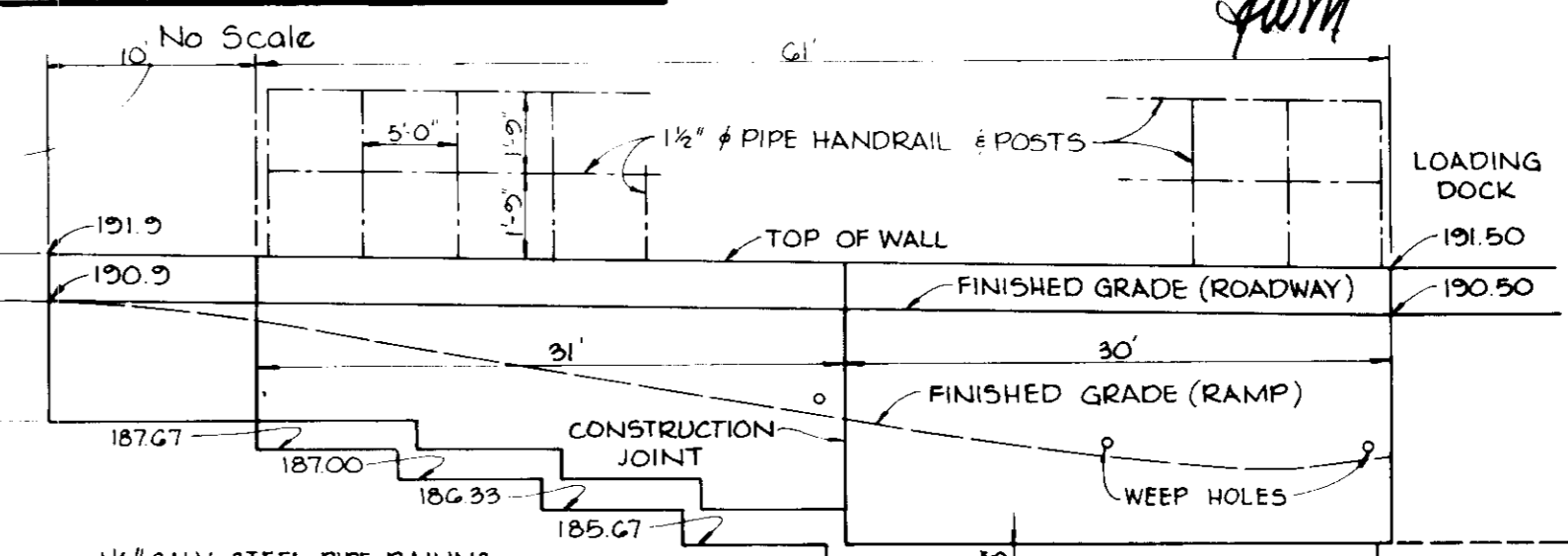


M.S.H.A. TYPE 'A' CURB AND GUTTER

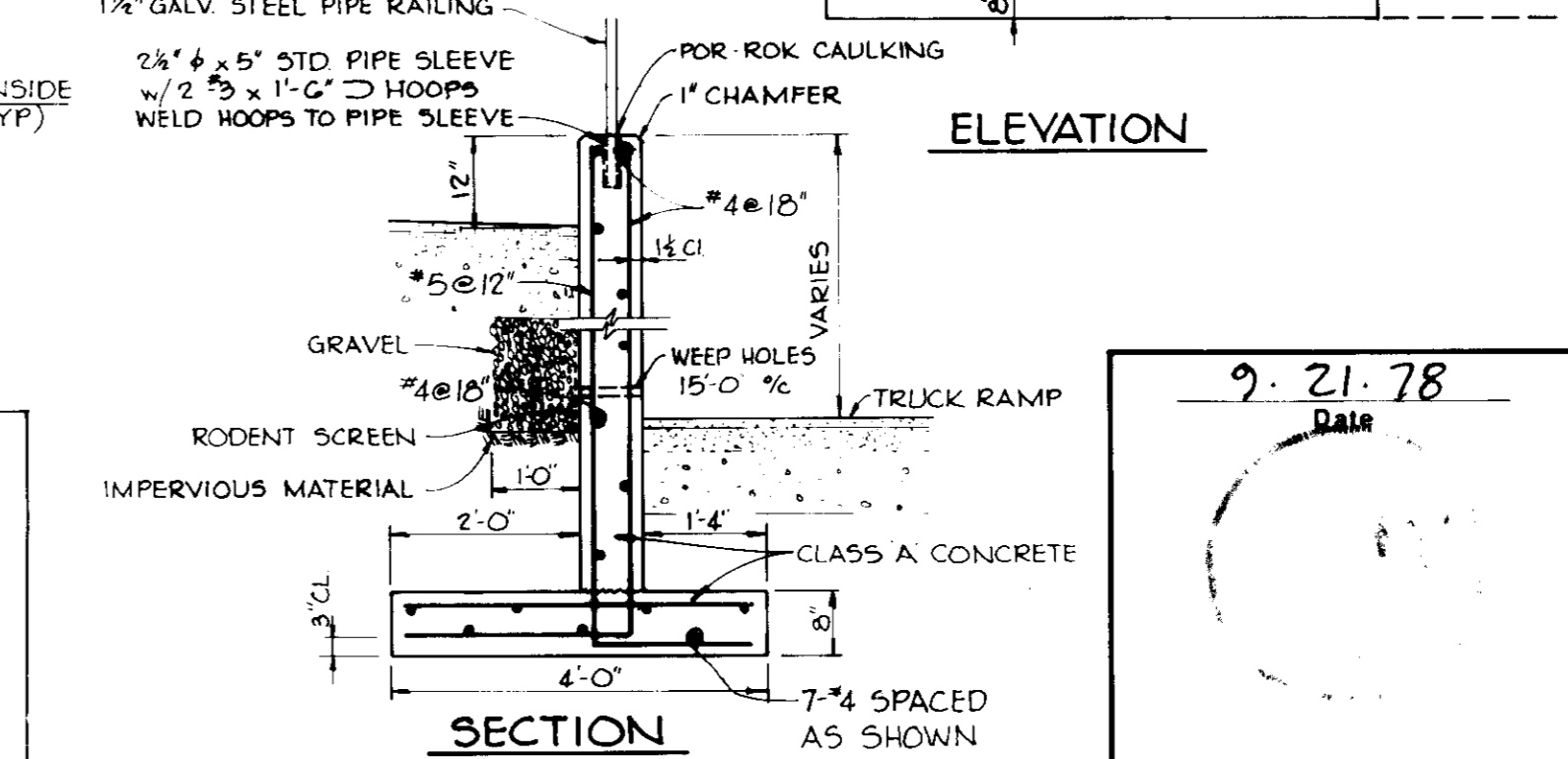


SIDEWALK DETAIL

THIS SECTION OF WALL TO BE CLASS A CONCRETE AND SIMILAR TO STANDARD BARRIER CURB



ELEVATION



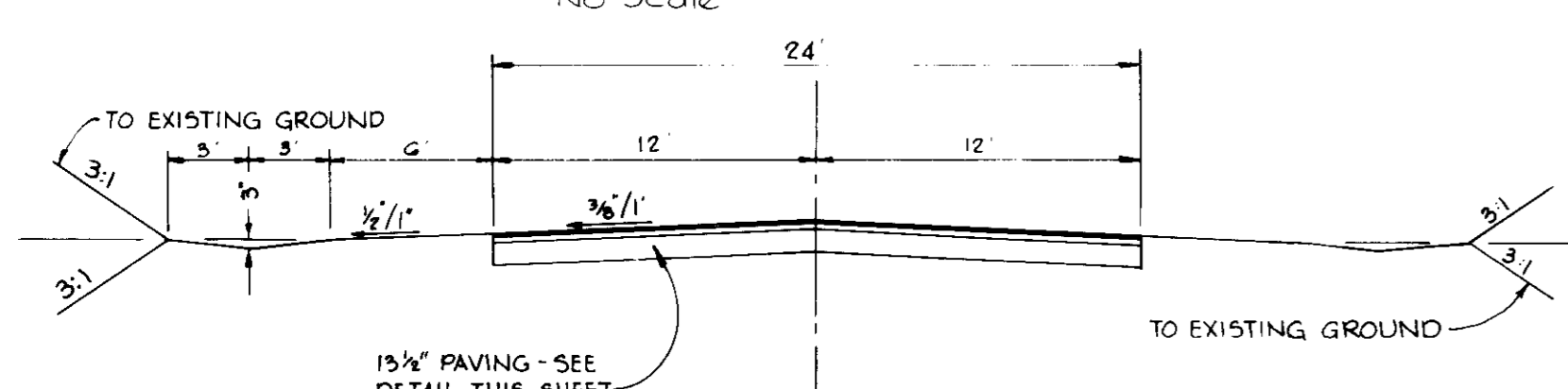
SECTION RETAINING WALL

9-21-78
Date
James K. Tracy
Professional Engr. No. 9566

- NOTES**
- THE BASE WILL BE PRIMED IN ACCORDANCE WITH SECTION C-50-3 AS PROVIDED IN THE HOWARD COUNTY ROAD CONSTRUCTION CODE AND STANDARD SPECIFICATIONS
 - A TACK COAT IS REQUIRED, IN ACCORDANCE WITH SECTION C-31-4 OF THE HOWARD COUNTY ROAD CONSTRUCTION CODE AND STANDARD SPECIFICATIONS
 - ALL CONSTRUCTION SHALL BE IN ACCORDANCE WITH THE HOWARD COUNTY ROAD CONSTRUCTION CODE AND STANDARD SPECIFICATIONS

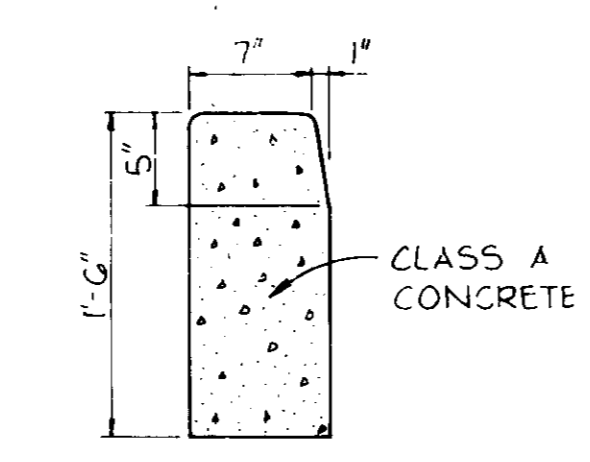
ITEM	SEC.
CLEARING AND GRUBBING	C-1
SUBGRADE	C-2
BASE COURSE	C-25
BINDER COURSE	C-31 OR 35
SURFACE COURSE	C-31

1 3/2" PAVING

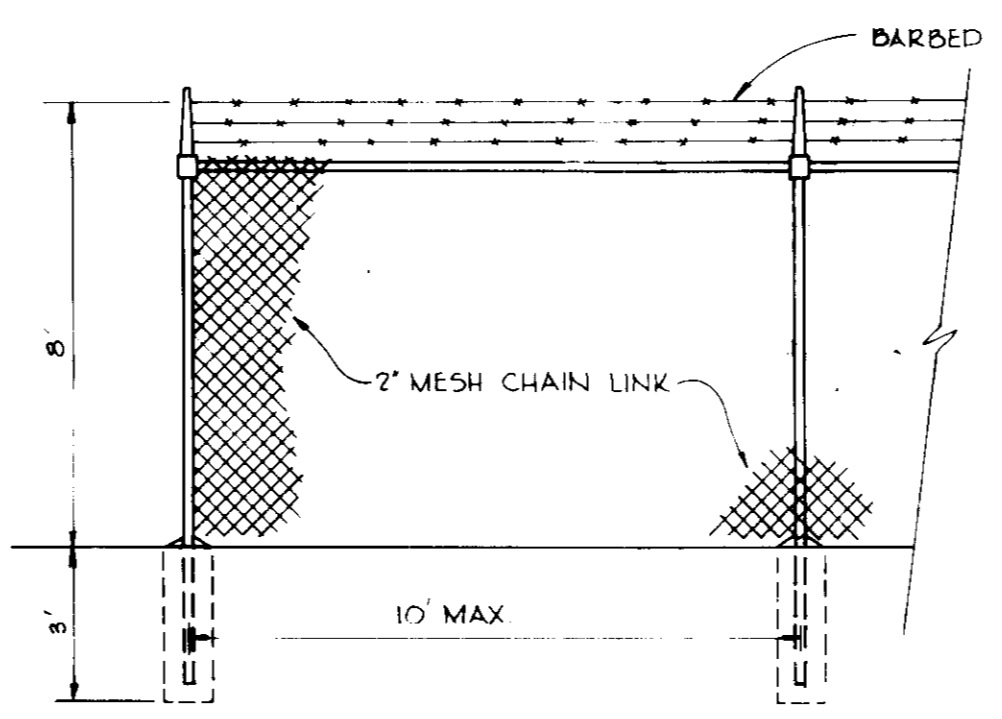


ROAD SECTION

- M.S.H.A. PAVING**
- PAVING TO CONSIST OF ONE OF THE FOLLOWING (a) OR (b).
- 3" COMPACTED BITUMINIOUS CONCRETE (6" BASE - 3" SURFACE PLACED IN 3-3" COURSES)
 - 3" (NOMINAL) BITUMINIOUS CONCRETE SURFACE PLUS 5" (NOMINAL) BITUMINIOUS CONCRETE BASE OR SAND ASPHALT BASE ON ONE OF THE FOLLOWING:
 - 4" CR. G. OR
 - 4" DENSE GRADED AGGREGATE BASE OR
 - 6" GRAVEL OR
 - 12" SELECT BORROW OR EQUIVALENT MATERIAL



STANDARD BARRIER CURB



8' FENCE