

APPROVED FOR PRIVATE WATER & PRIVATE SEWER COUNTY HEALTH DEPARTMENT  
 COUNTY HEALTH OFFICER: *James B. ...* DATE: 11-27-78

APPROVED: HOWARD COUNTY OFFICE OF PLANNING & ZONING  
 PLANNING DIRECTOR: *Thomas H. ...* DATE: 12-1-78

CHIEF DIVISION OF LAND DEVELOPMENT: *...* DATE: 12-1-78

APPROVED FOR STORM DRAIN SYSTEMS AND ROADS HOWARD COUNTY DEPARTMENT OF PUBLIC WORKS.  
 DIRECTOR: *Richard E. ...* DATE: 12/1/78

CHIEF BUREAU OF ENGINEERING: *W.O. ...* DATE: 12-1-78

ENGINEER'S CERTIFICATE.  
 I HEREBY CERTIFY THAT THIS PLAN FOR EROSION & SEDIMENT CONTROL REPRESENTS A PRACTICAL WORKABLE PLAN BASED ON MY PERSONAL KNOWLEDGE OF THE SITE CONDITIONS & THAT IT WAS PREPARED IN ACCORDANCE WITH THE REQUIREMENTS OF THE HOWARD SOIL CONSERVATION DISTRICT.

*Walter Park* 8/25/78  
 WALTER PARK

DEVELOPER'S CERTIFICATE.  
 I HEREBY CERTIFY THAT ALL DEVELOPMENT AND/OR CONSTRUCTION WILL BE DONE ACCORDING TO THIS PLAN & DEVELOPMENT AND PLAN FOR EROSION & SEDIMENT CONTROL. I WILL MAINTAIN PERIODIC ON-SITE INSPECTION BY THE HO. SOIL CONSERVATION DISTRICT. THEIR AUTHORIZED AGENTS AS ARE DEEMED NECESSARY. DEVIATION FROM THIS PLAN WILL NOT BE MADE UNLESS AUTHORIZED BY THE HO. SOIL CONSERVATION DISTRICT.

*M. Price* 8/25/1978

REVIEWED FOR HO. SOIL CONSERVATION DISTRICTS & MEETS TECHNICAL REQUIREMENTS.  
 U.S. SOIL CONSERVATION SERVICE: *W. Wayne Ray* DATE: 11/22/78

THIS DEVELOPMENT PLAN IS APPROVED FOR SOIL EROSION AND SEDIMENT CONTROL BY THE HOWARD SOIL CONSERVATION SERVICE.  
 HO. SOIL CONSERVATION DISTRICT: *Robert W. Zehm* DATE: 11/22/78

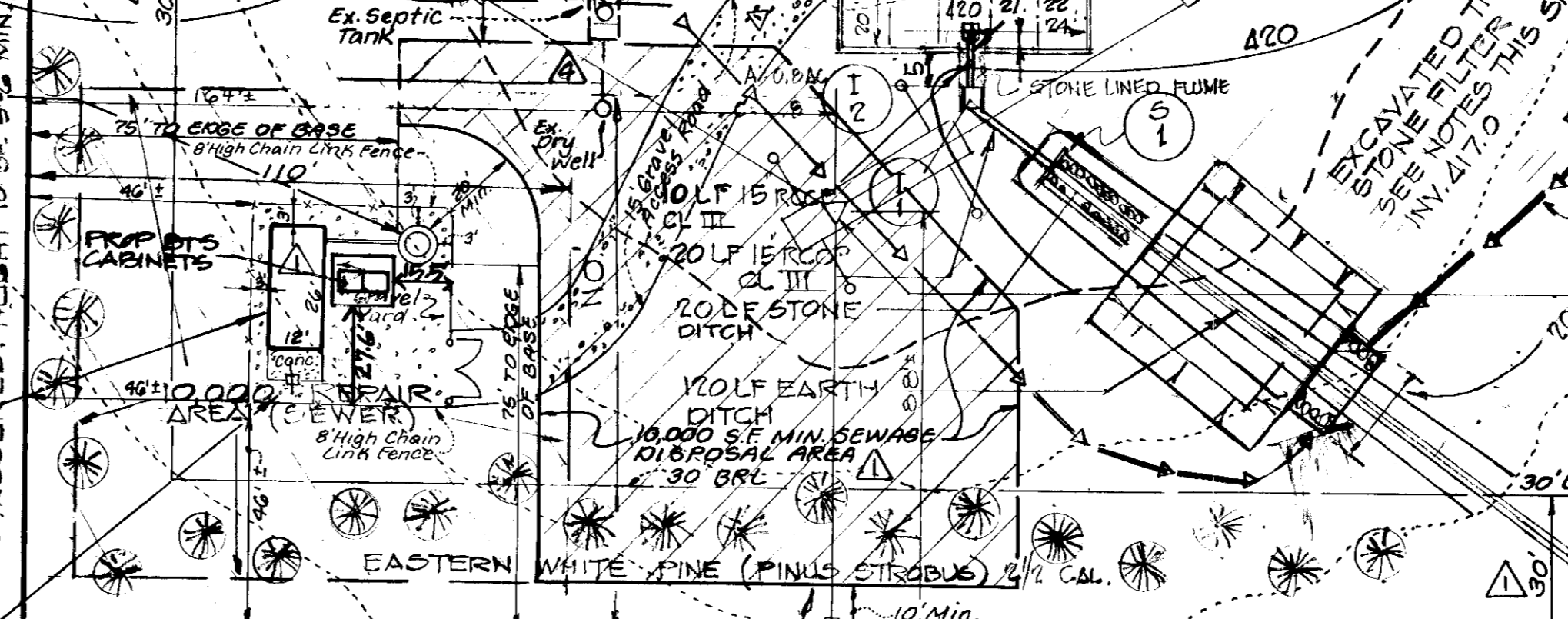
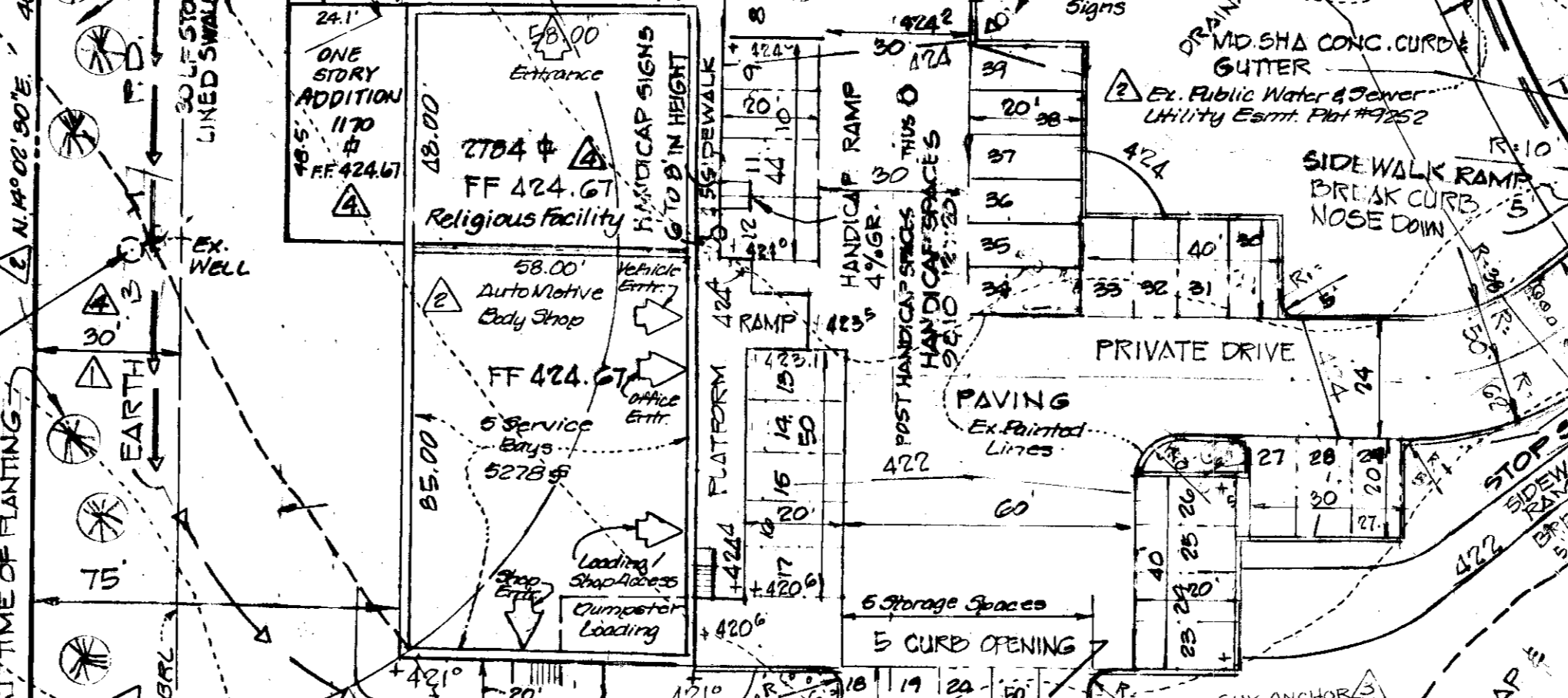
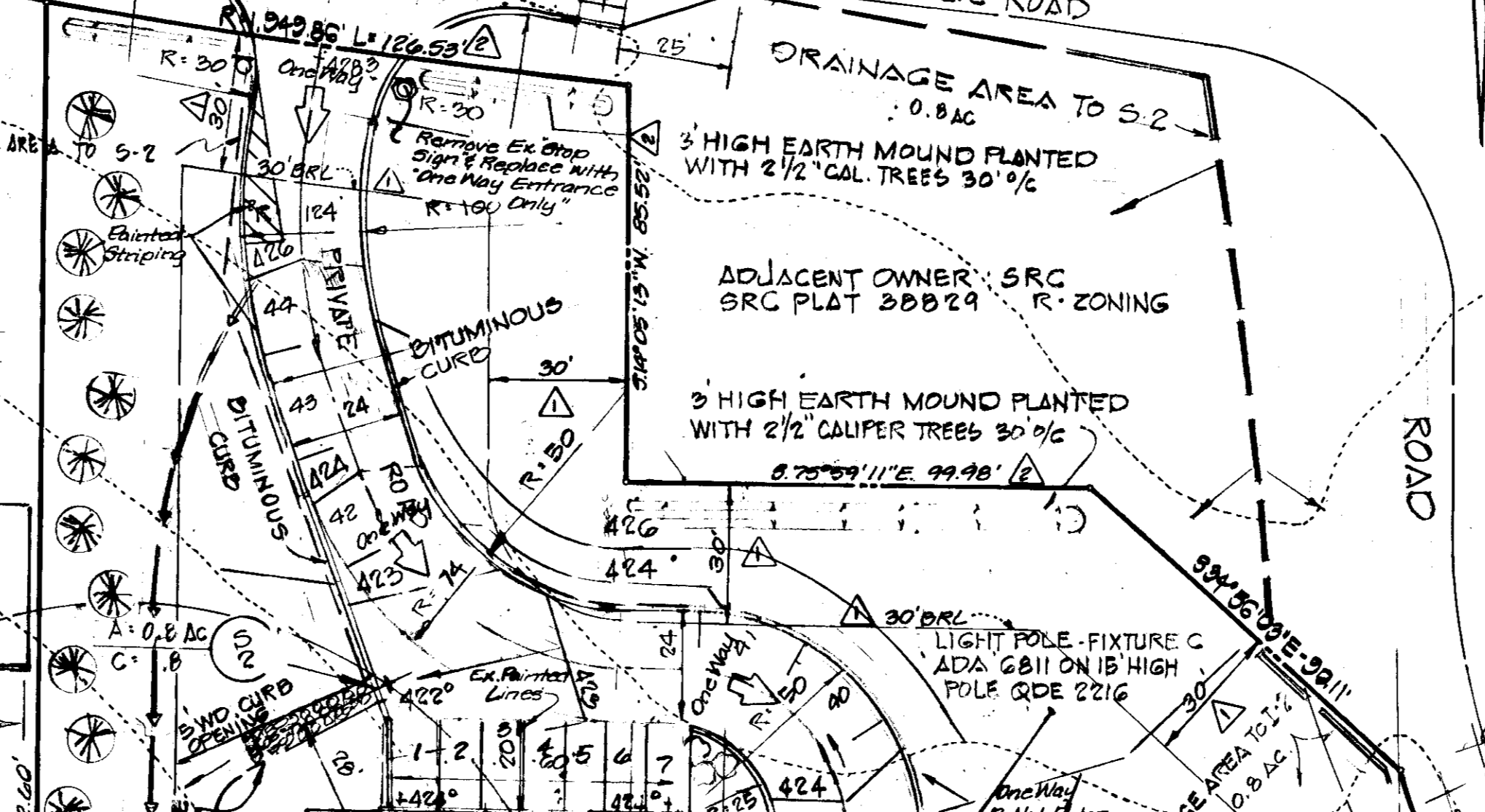
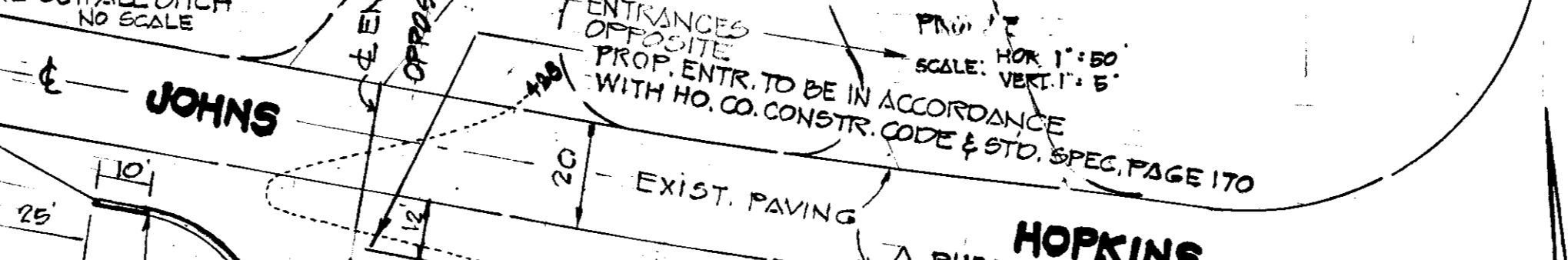
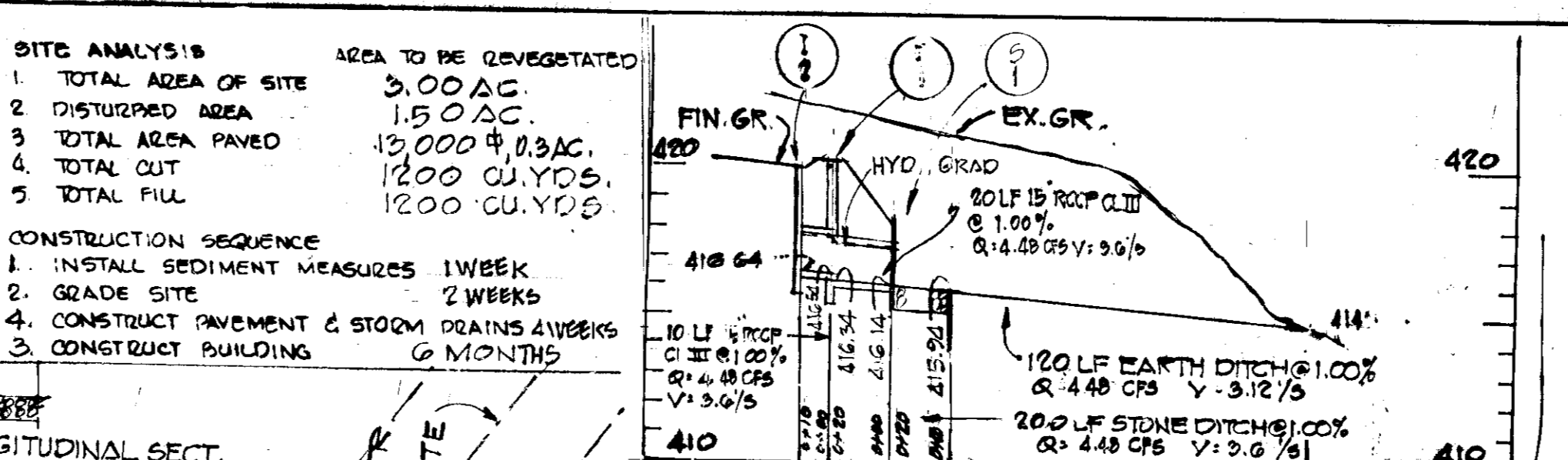
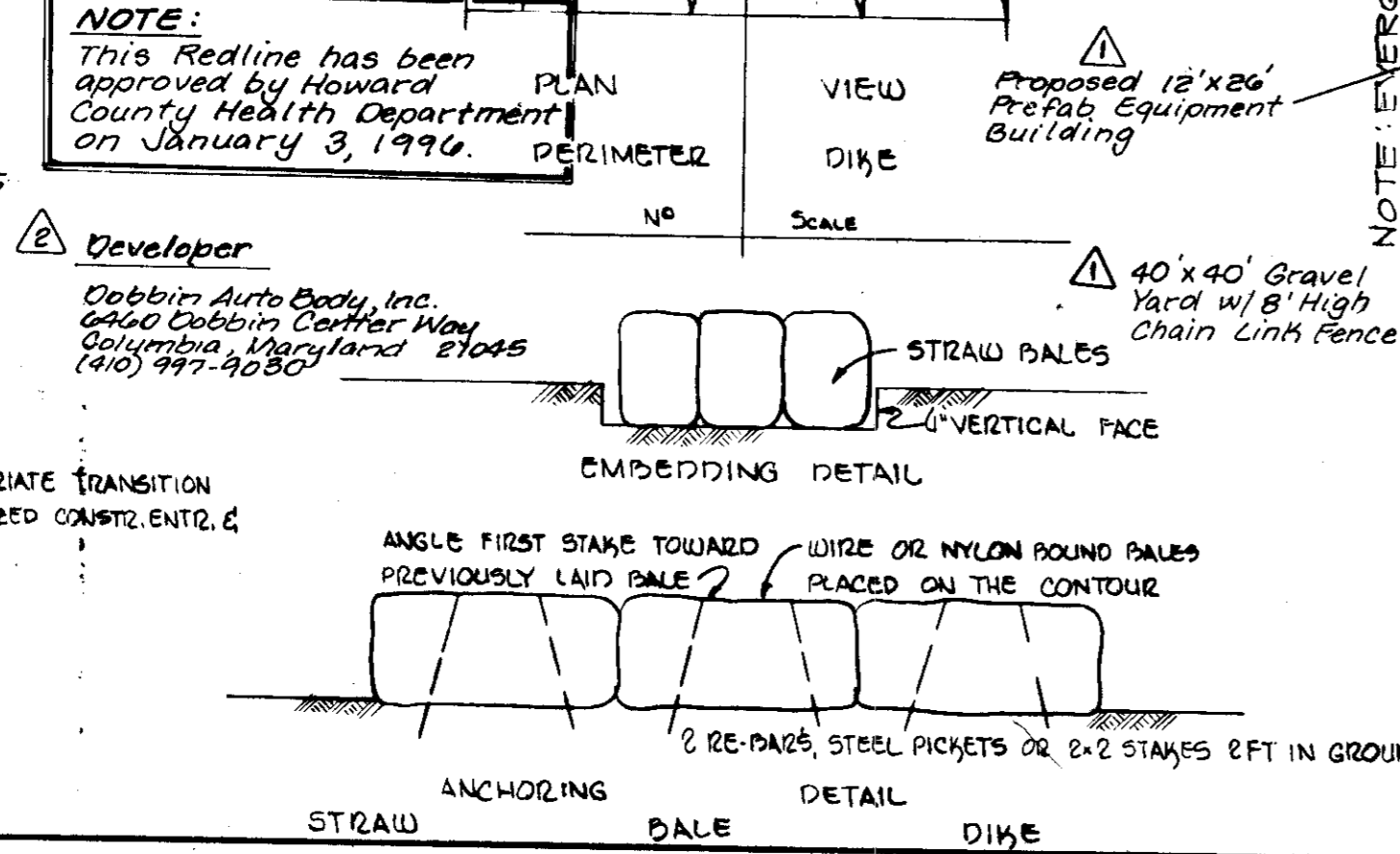
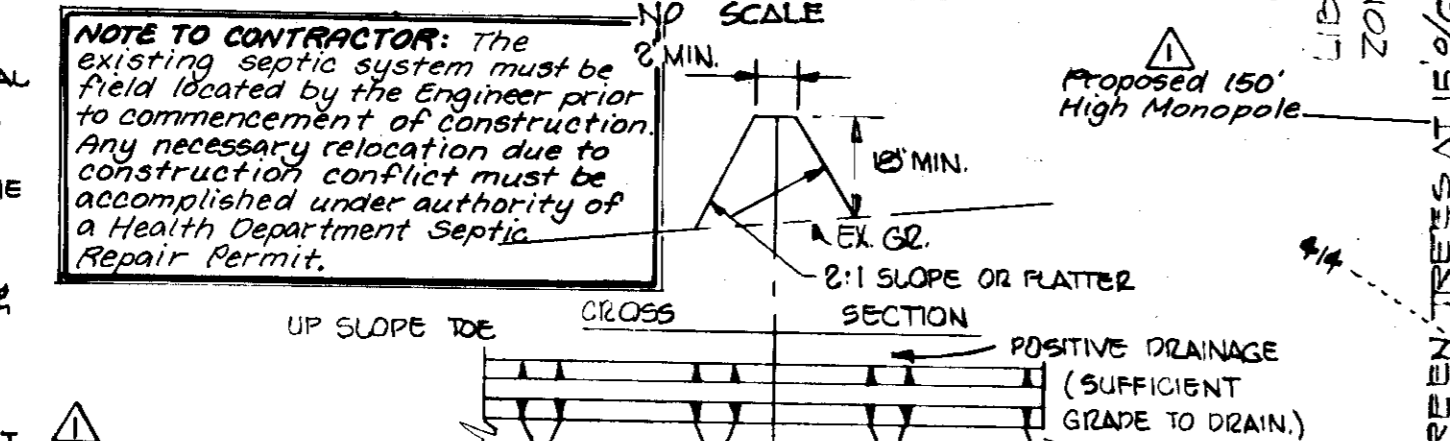
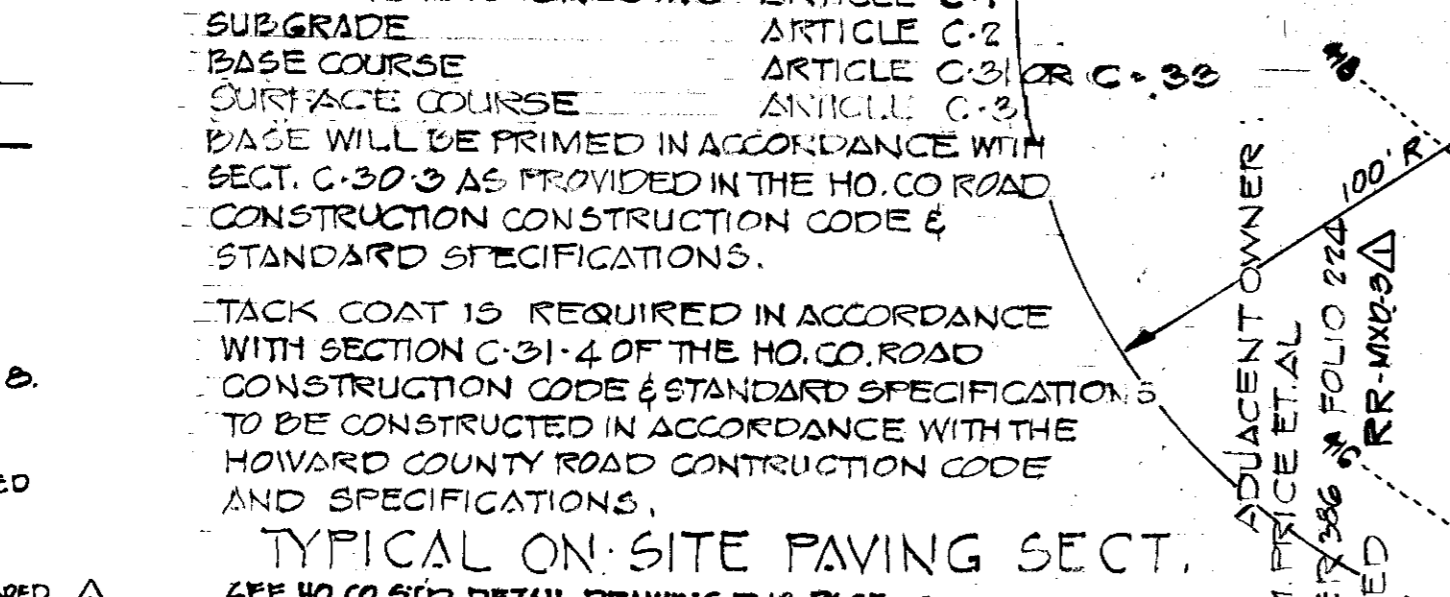
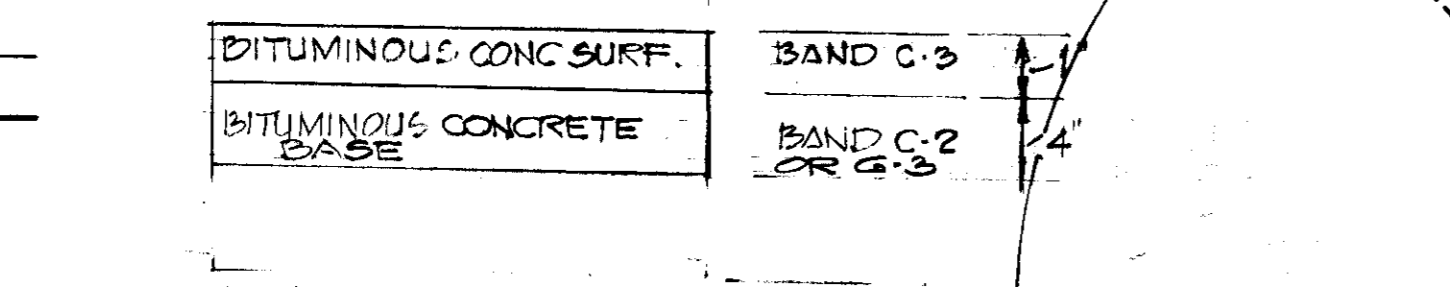
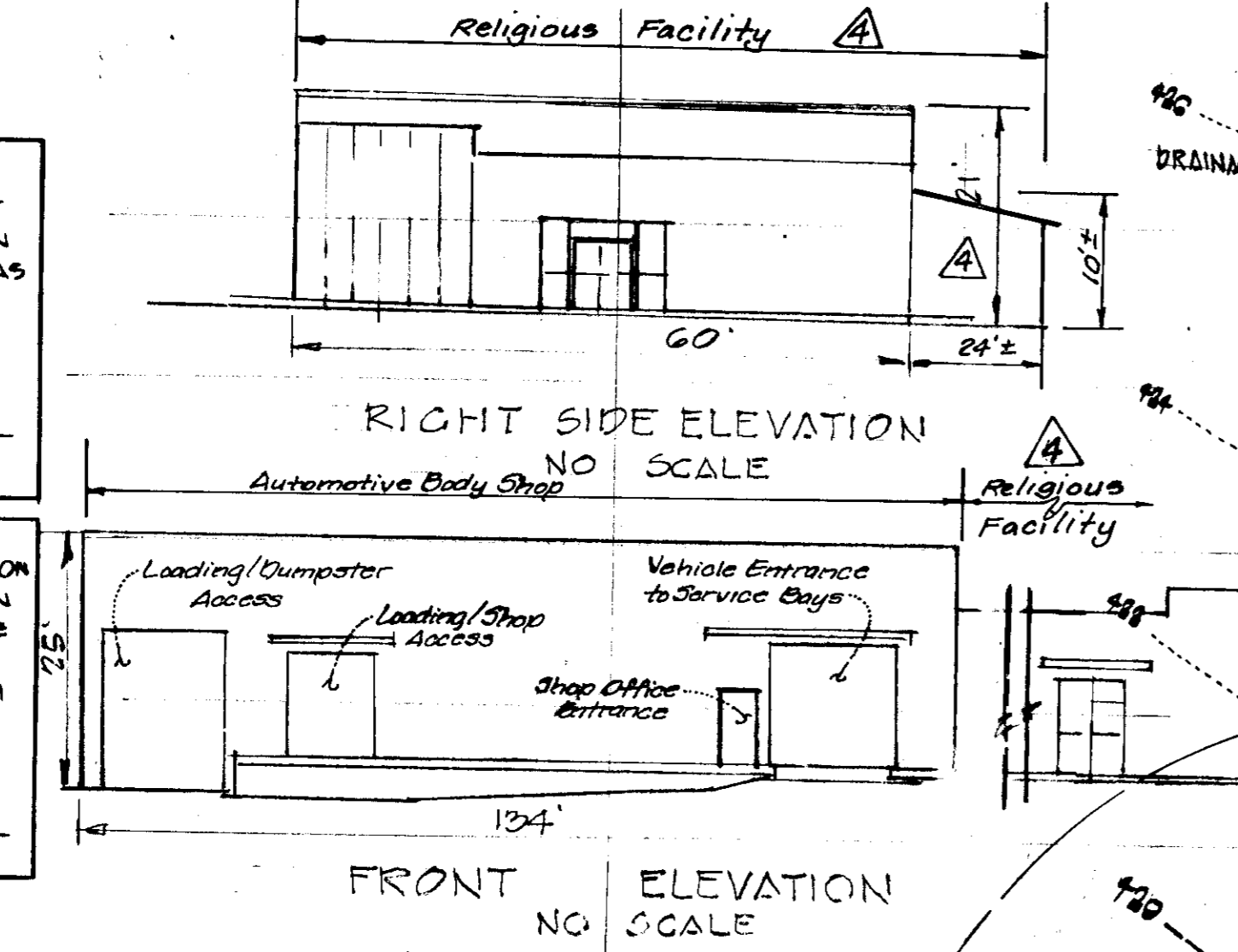
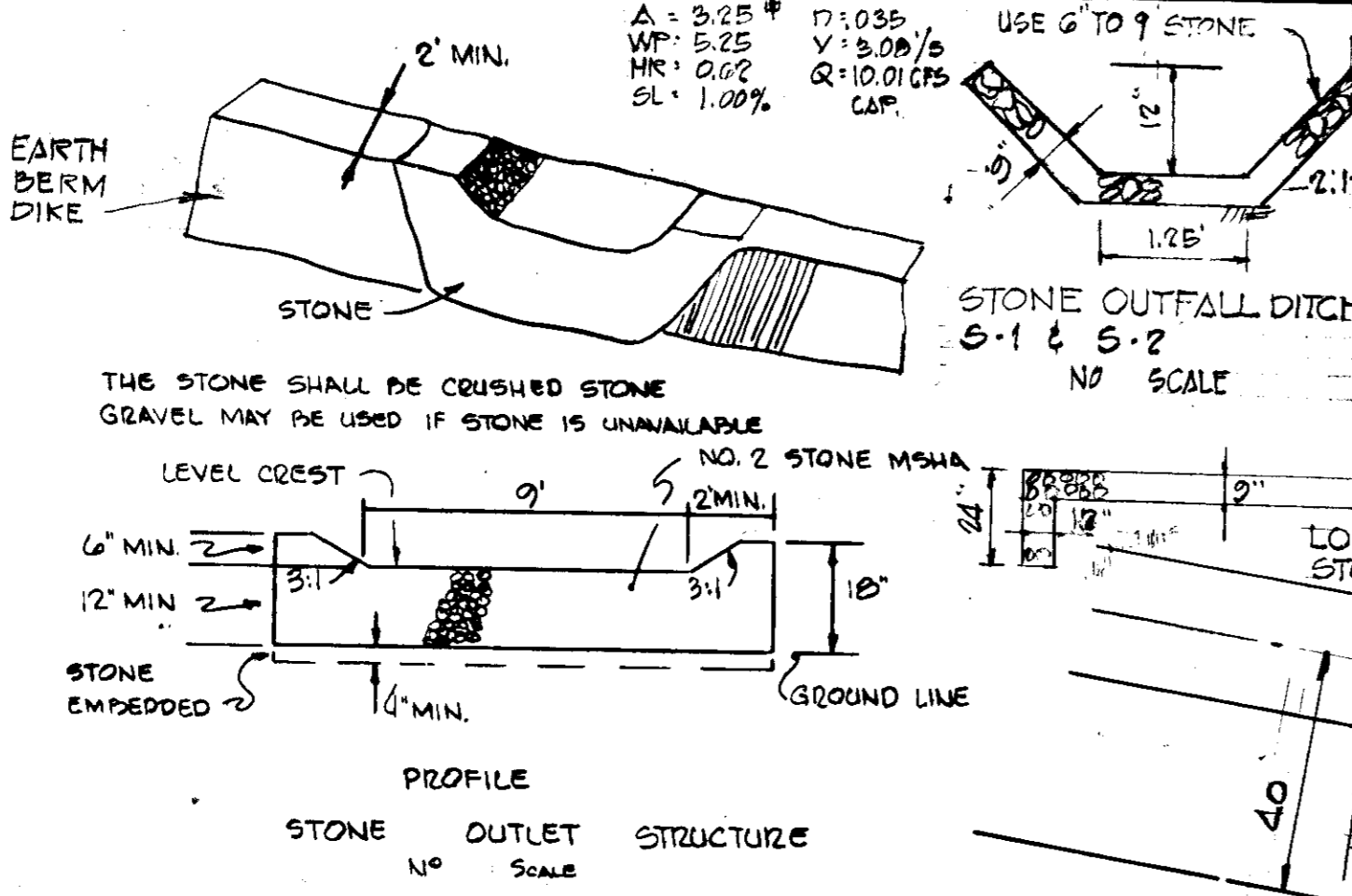
SEDIMENT CONTROL NOTES:  
 1. OBTAIN GRADING PERMIT.  
 2. THE HO. CO. BUREAU OF LICENSE, INSPECTIONS & PERMITS SHALL BE GIVEN 5 DAYS NOTICE PRIOR TO ANY GRADING.  
 3. ALL SEDIMENT CONTROL MEASURES SHOWN ON THIS PLAN UNLESS OTHERWISE SPECIFIED SHALL BE INSTALLED IN ACCORDANCE WITH NOTE 4.  
 4. ALL SLOPES SHALL BE MAX. 3 TO 1.  
 5. FOLLOWING THE STABILIZATION OF ALL AREAS TO BE UPGRADED, THE AREA OF SEDIMENT CONTROL MEASURES MAY BE REMOVED & GRADDED TO THE FINAL GRADES SHOWN & STABILIZED IMMEDIATELY.  
 6. IN THE EVENT OF EXCESS MATERIAL, EXCESS MATERIAL SHALL BE STOCKPILED WITH A MAX. SLOPE 3:1 IN AN AREA WHICH HAS BEEN CLEARED ON-SITE. STOCKPILED MATERIAL SHALL BE STABILIZED IN ACCORDANCE WITH NOTE 5.  
 7. SEDIMENT CONTROL MEASURES WILL NOT BE REMOVED UNTIL APPROVAL IS OBTAINED FROM HO. CO. BUREAU OF PERMITS, INSPECTION & LICENSE.  
 8. PERMANENT STABILIZATION:  
 APPLY: 2000 LBS. PER ACRE OF PULVERIZED DOLOMITIC LIMESTONE  
 100 LBS. PER ACRE OF 0-20-0 SUPER PHOSPHATE  
 1000 LBS. PER ACRE OF 10-10-10 FERTILIZER  
 SEED: 25 LBS. PER ACRE OF KENTUCKY 31 TALL FESCUE & 25 LBS. PER ACRE OF ANNUAL RYE GRASS.  
 NOTE: SEED BETWEEN MAR. 1 - MAY 1 OR AUG. 1 - OCT. 1 ONLY.  
 MULCH: 2 TONS PER AC. OF UNWEATHERED LIGNITE STRAW  
 TIE DOWN MULCH WITH 480 GAL. PER AC. OF LIQUID ASPHALT.

DEVELOPER: *CELLULAR ONE*  
 7150 Standard Drive  
 Parkway Center  
 Hanover, Maryland  
 21076  
 (410) 712-7719

REVISION BY: *LOE, Inc.*  
 9250 Rumsey Road  
 Suite 106  
 Columbia, MD 21045  
 (410) 715-1070

NOTE: This Redline has been approved by Howard County Health Department on January 3, 1976.

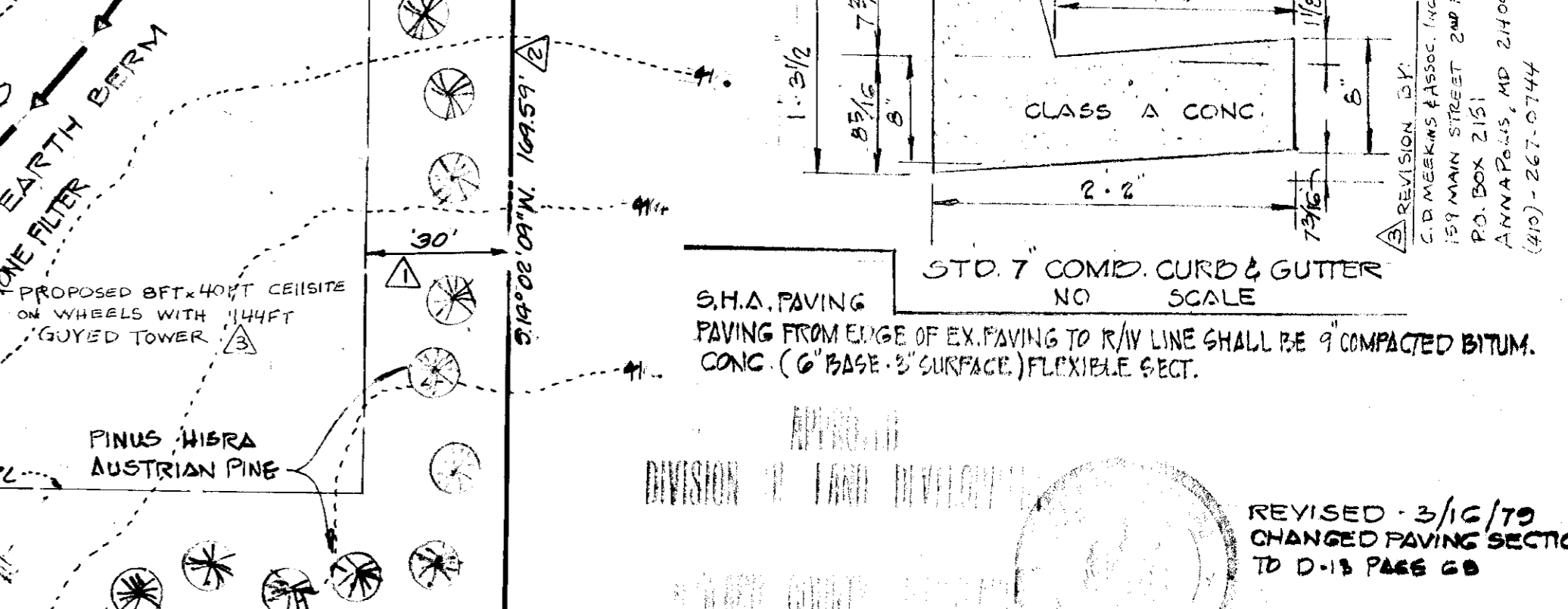
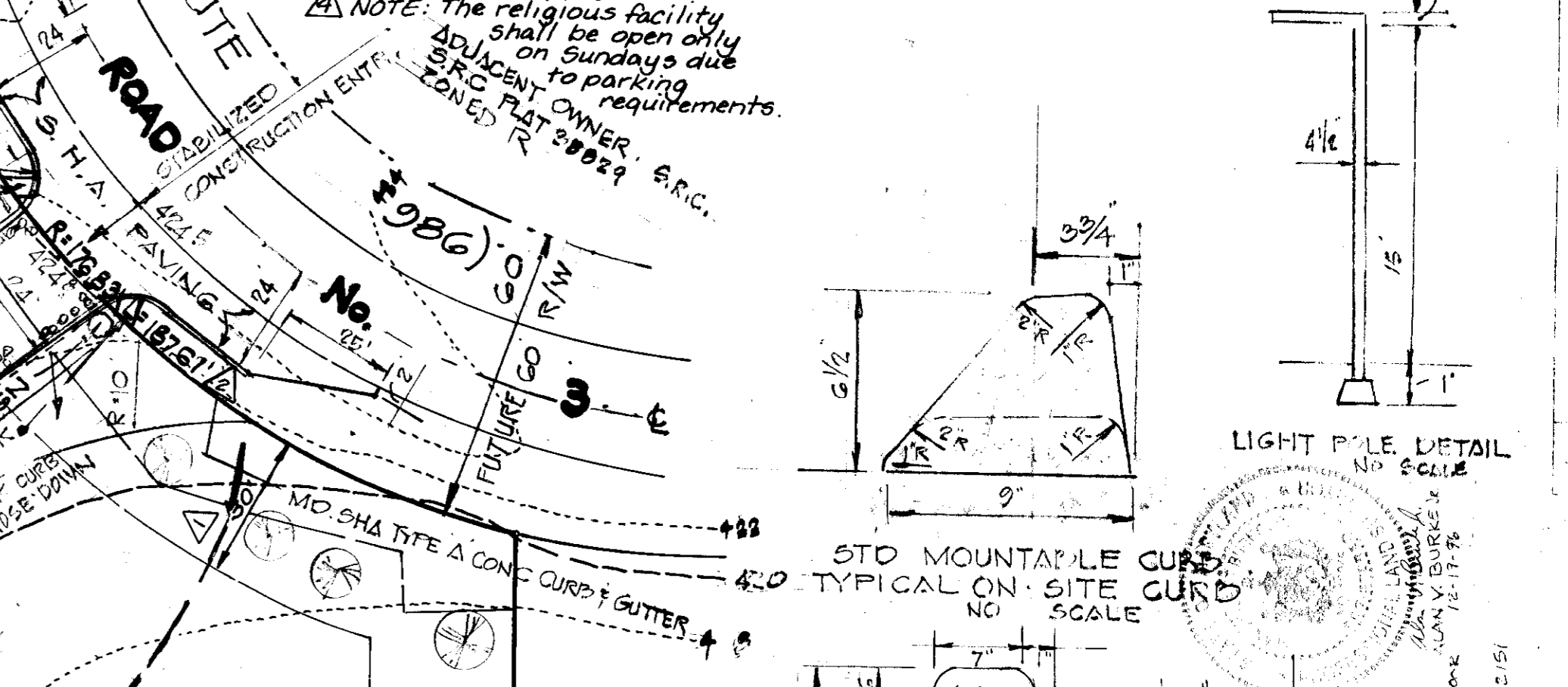
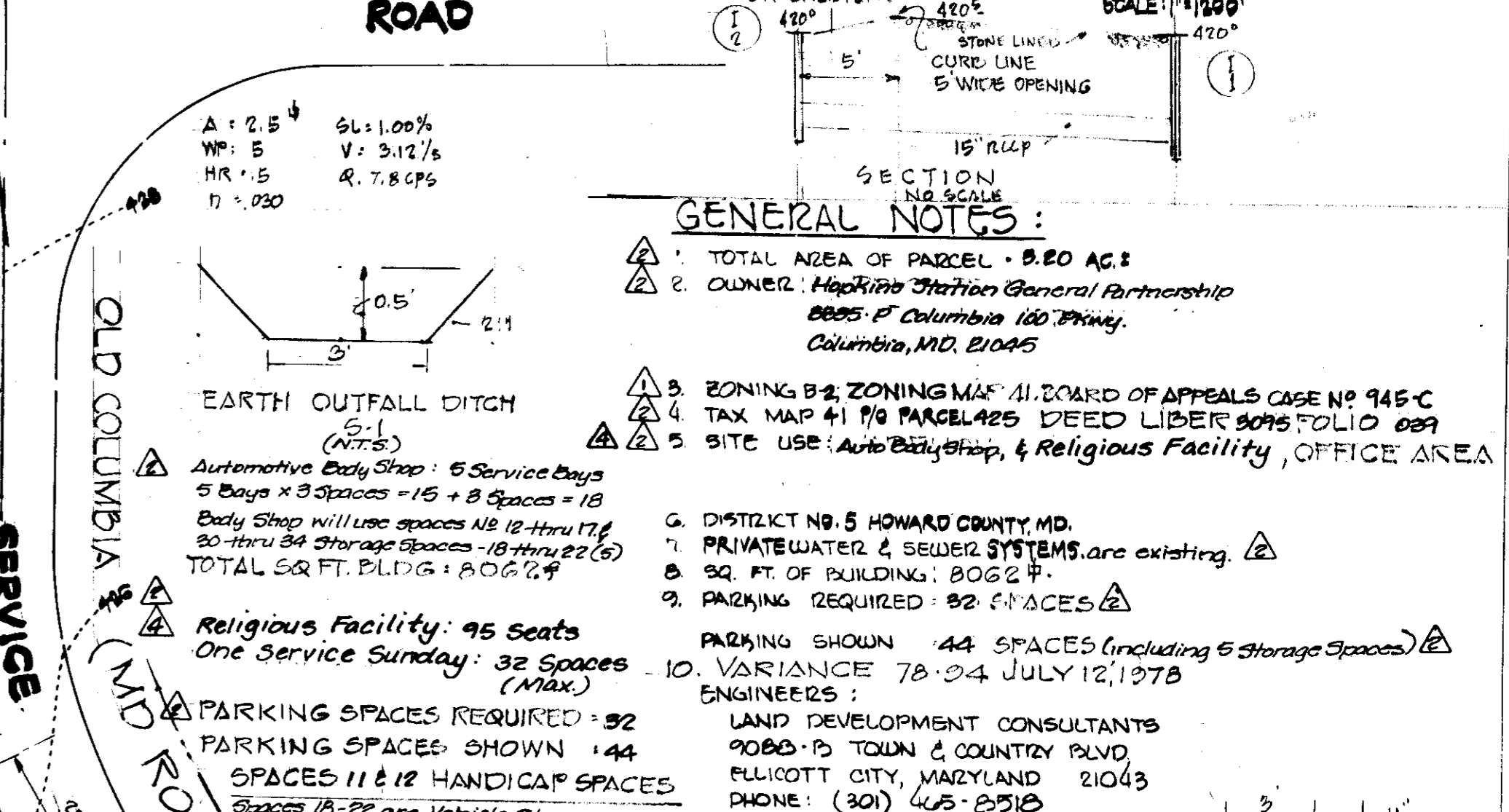
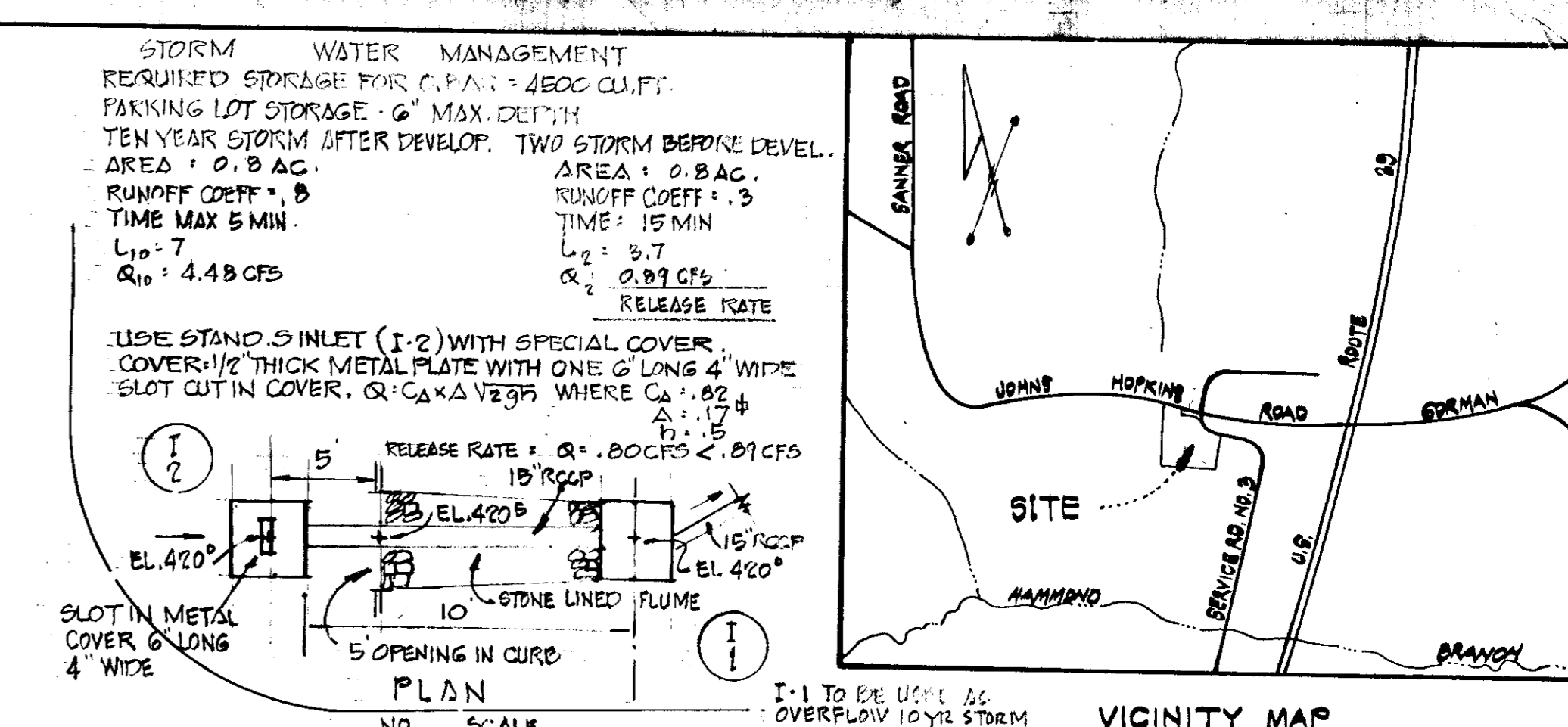
Developer: *Cobbins Auto Body, Inc.*  
 6450 Cobbins Center Way  
 Columbia, Maryland 21045  
 (410) 497-9080



NOTE: EVERGREEN TREES AT 15' ON CENTER. HEIGHT TO BE 5'-6' AT TIME OF PLANTING.

STRUCTURE		SCHEDULE		REMARKS	
NO.	TYPE	INV. IN	INV. OUT		
I-1	HO. CO. STD. CLASS 5 INLET	416.64	416.34	420.00	SEE HO. CO. STD. DETAILS DRWG. D-28 PAGE 153
S-1	HO. CO. STD. TYPE C ENDWALL	416.14	416.14	420.00	SEE HO. CO. STD. DETAILS DRWG. D-28 PAGE 107
I-2	HO. CO. STD. CLASS 5 INLET	416.64	420.00	420.00	SEE HO. CO. STD. DETAILS DRWG. D-18 PAGE 153

REVISION		DESCRIPTION
NO.	DATE	BY
1	01/04/76	LOE, Inc.
Communication Tower & Compound, 30' B.C.L. Zoning/Health Dept. Comments (12/28/75)		
2	11/18/76	LOE, Inc.
Revise use of Warehouse to Auto Body Shop & Parking Substitutions		



REVISION TO SITE DEVELOPMENT PLAN  
**PRICE FARMS**  
 LOT 1  
 RECORD PLAT RECORDING REFERENCE NO. 9252  
 TAX MAP 41 PARCEL 425  
 5<sup>TH</sup> ELECTION DISTRICT HOWARD COUNTY, MD.  
 SCALE: 1"=30' SHEET 1 OF 1 AUGUST, 1978  
 Previous Submissions: P-7-18; P-9-182