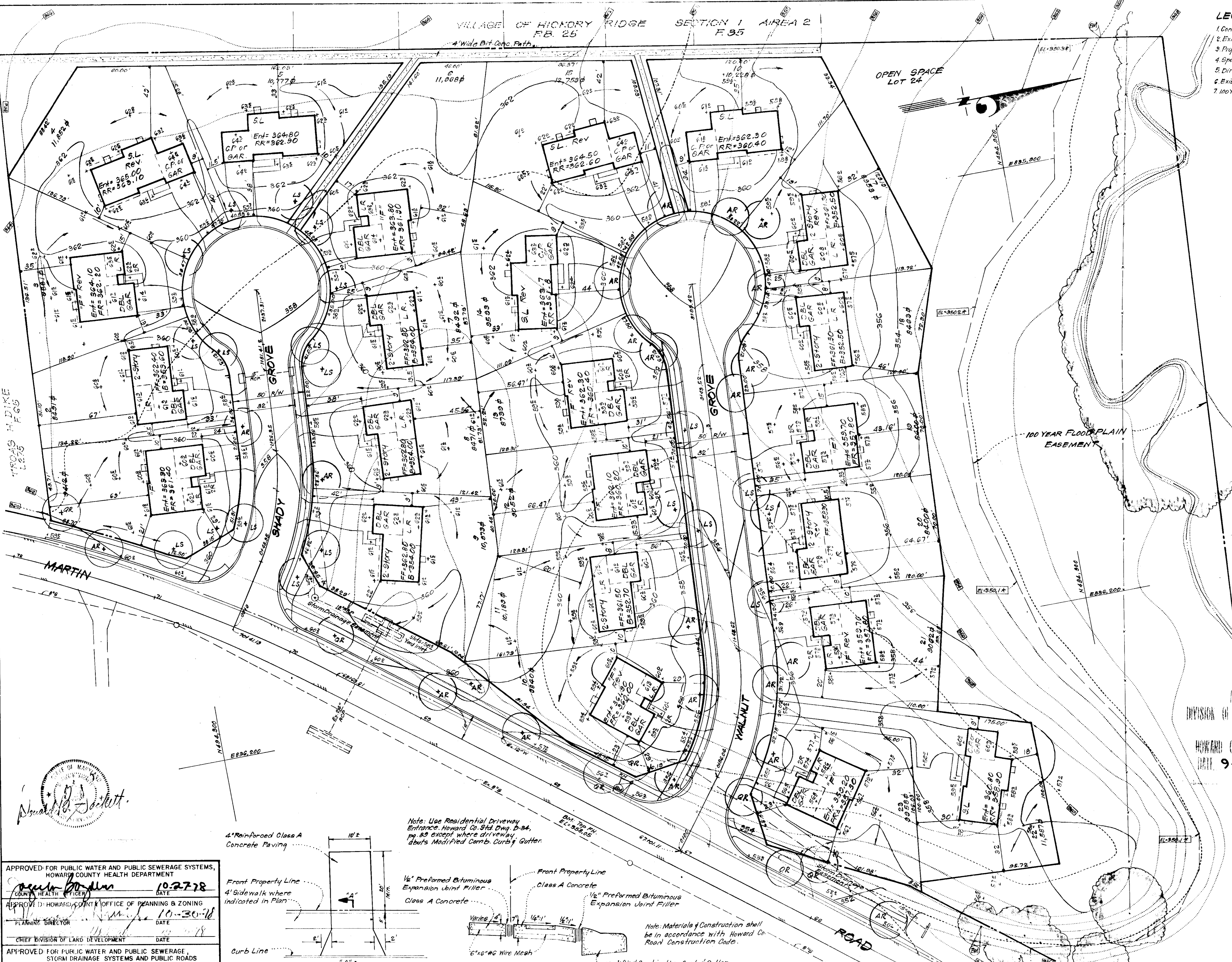
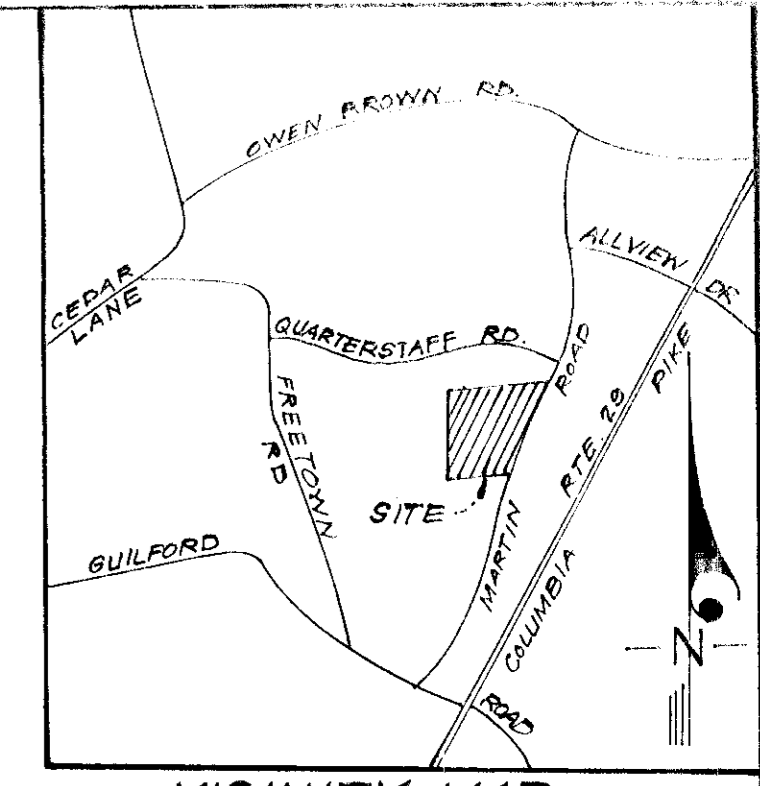


VILLAGE OF HICKORY RIDGE SECTION 1 AREA 2
F.B. 25 F.35

- LEGEND:**
- 1. Contour Interval 2 FT.
 - 2. Existing Contour
 - 3. Proposed Contour
 - 4. Spot Elevation
 - 5. Direction of Drainage
 - 6. Exist. Trees to be Retained
 - 7. 100 Year Flood Plain Elev.



GENERAL NOTES:

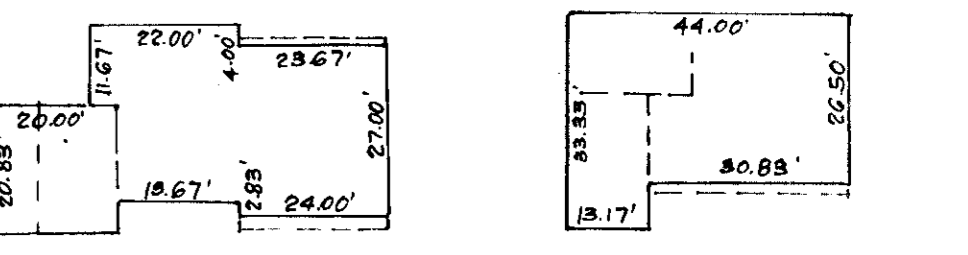
1. The Land included in this Plan is zoned: R-12
2. The plan and coordinates shown hereon are based upon traverse controls for Columbia established by Maps Inc. in 1965 and by Purdum and Jeschke in 1968, which controls were tied to Md. Bureau of Control Survey Monuments and to US Coast and Geodetic Survey Monuments in the Columbia Area.
3. The Area covered in this submission is located on Tax Map # 26.
4. The Total Area included in this plan is 5.178 Acres.
5. All Roadways are public & existing.
6. Any damage to County owned Rights of Way or Paving shall be corrected at the developer's expense.
7. The Developer/Builder shall keep a set of approved Sediment & Erosion Control Plans (F 79-18) on Site during Construction.

PLANT LIST:

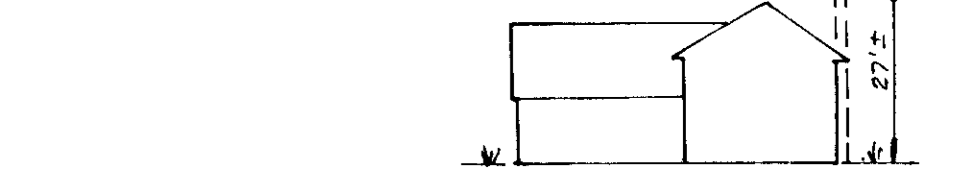
KEY	NO.	NAME	SIZE	REMARKS
AR	22	Acer Rubrum 'October Glory'	1 1/2" Cal. 8-10' Ht.	B&B Heavy Hoses
QR	7	Quercus Rubra Red Oak	1 1/2" Cal. 8-10' Ht.	" " "
LS	20	Liquidambar Styraciflua Sweet Gum	1 1/2" Cal. 8-10' Ht.	" " "



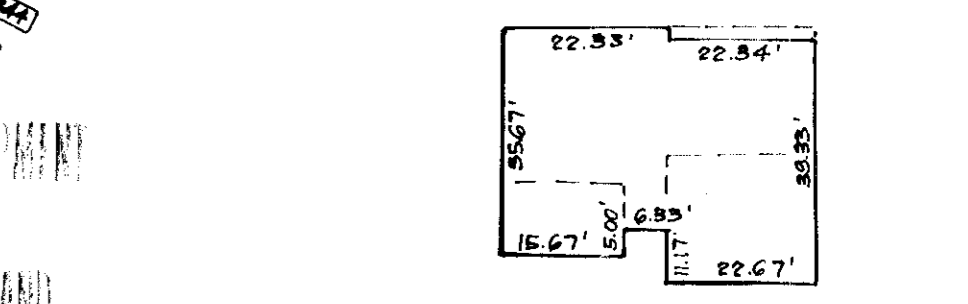
SPLIT LEVEL S.L. 2-STORY



1 1/2" SPLIT LEVEL



1 1/2" SPLIT LEVEL

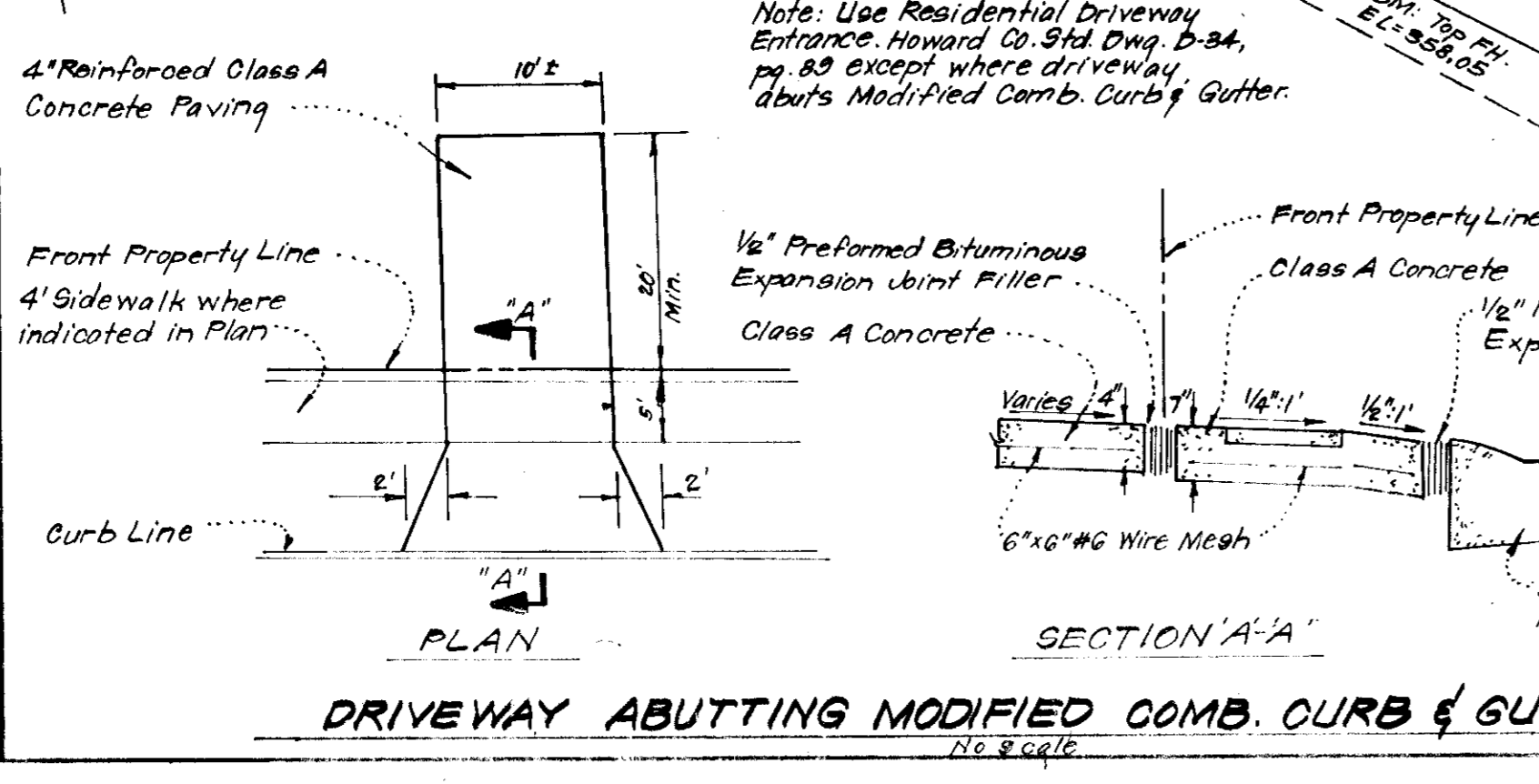


TYPICAL HOUSES NO SCALE

Note: For Bearing and Distances of Individual Lot Lines See Record Plat recorded as P.B. 4115, 10-19-78

APPROVED FOR PUBLIC WATER AND PUBLIC SEWERAGE SYSTEMS, HOWARD COUNTY HEALTH DEPARTMENT
 APPROVED FOR PUBLIC WATER AND PUBLIC SEWERAGE, STORM DRAINAGE SYSTEMS AND PUBLIC ROADS HOWARD COUNTY DEPARTMENT OF PUBLIC WORKS
 APPROVED FOR PUBLIC WATER AND PUBLIC SEWERAGE, STORM DRAINAGE SYSTEMS AND PUBLIC ROADS HOWARD COUNTY DEPARTMENT OF PUBLIC WORKS

APPROVED FOR PUBLIC WATER AND PUBLIC SEWERAGE SYSTEMS, HOWARD COUNTY HEALTH DEPARTMENT
 APPROVED FOR PUBLIC WATER AND PUBLIC SEWERAGE, STORM DRAINAGE SYSTEMS AND PUBLIC ROADS HOWARD COUNTY DEPARTMENT OF PUBLIC WORKS
 APPROVED FOR PUBLIC WATER AND PUBLIC SEWERAGE, STORM DRAINAGE SYSTEMS AND PUBLIC ROADS HOWARD COUNTY DEPARTMENT OF PUBLIC WORKS



DRIVEWAY ABUTTING MODIFIED COMB. CURB & GUTTER

CLARK • FINEFROCK & SACKETT
 ENGINEERS • PLANNERS • SURVEYORS
 11315 LICKWOOD DRIVE SILVER SPRING, MARYLAND 20904 (301) 583-3400

DESIGNED: WRME
 DRAWN: DBS
 CHECKED: DBS
 DATE: Aug, 1978

SITE DEVELOPMENT PLAN
 LOTS 1 THRU 23
CLEMENS SQUARE
 SECTION 1, AREA 1
 6TH ELECTION DISTRICT
 HOWARD COUNTY, MARYLAND
 FOR: COLUMBIA BUILDERS, INC.
 909 American City Bldg.
 Columbia, Maryland 21044

SCALE: 1" = 30'
 DRAWING: 1 of 1
 JOB NO.: 1363-X
 FILE NO.: SDP-79-24