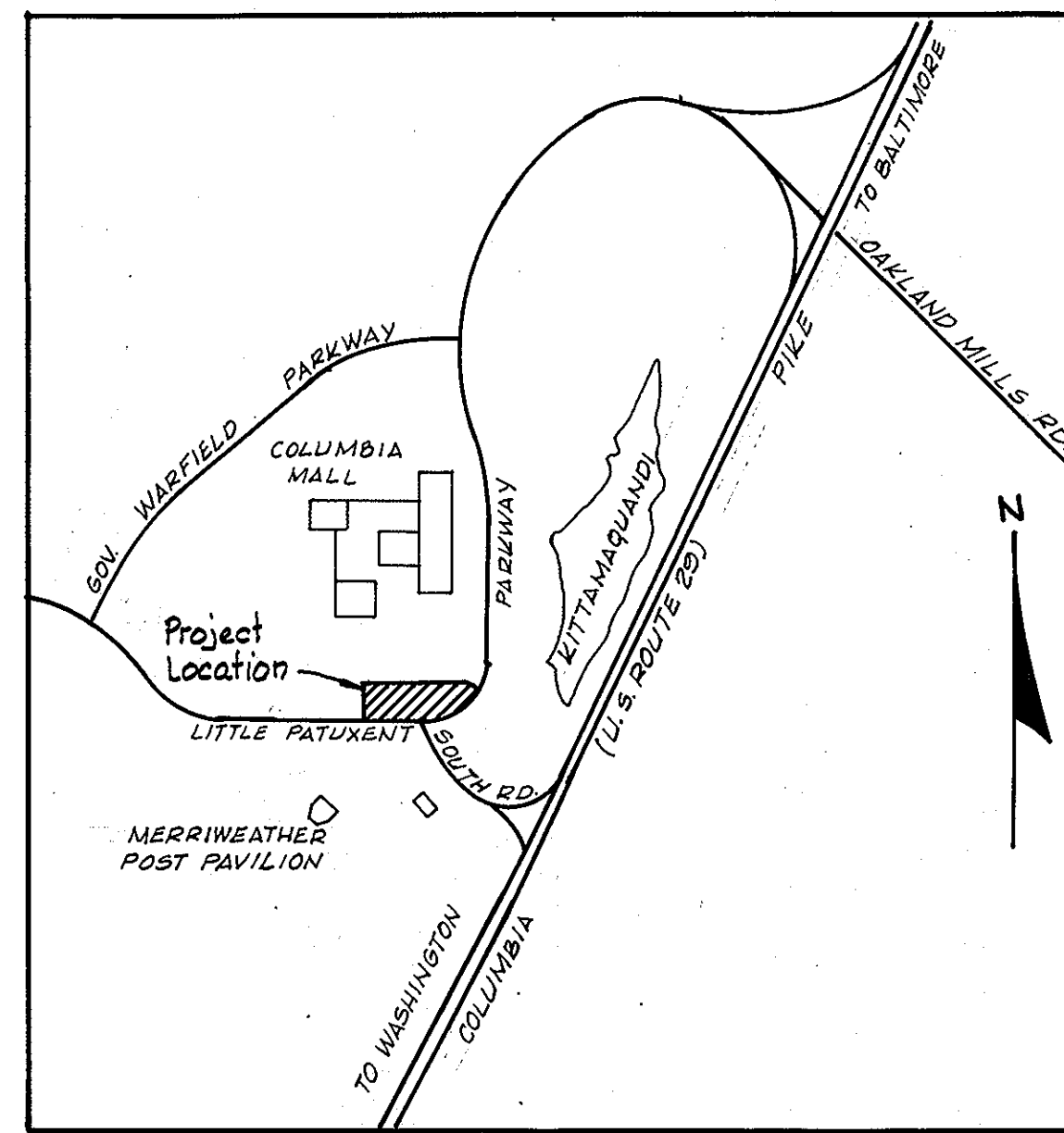


GENERAL NOTES

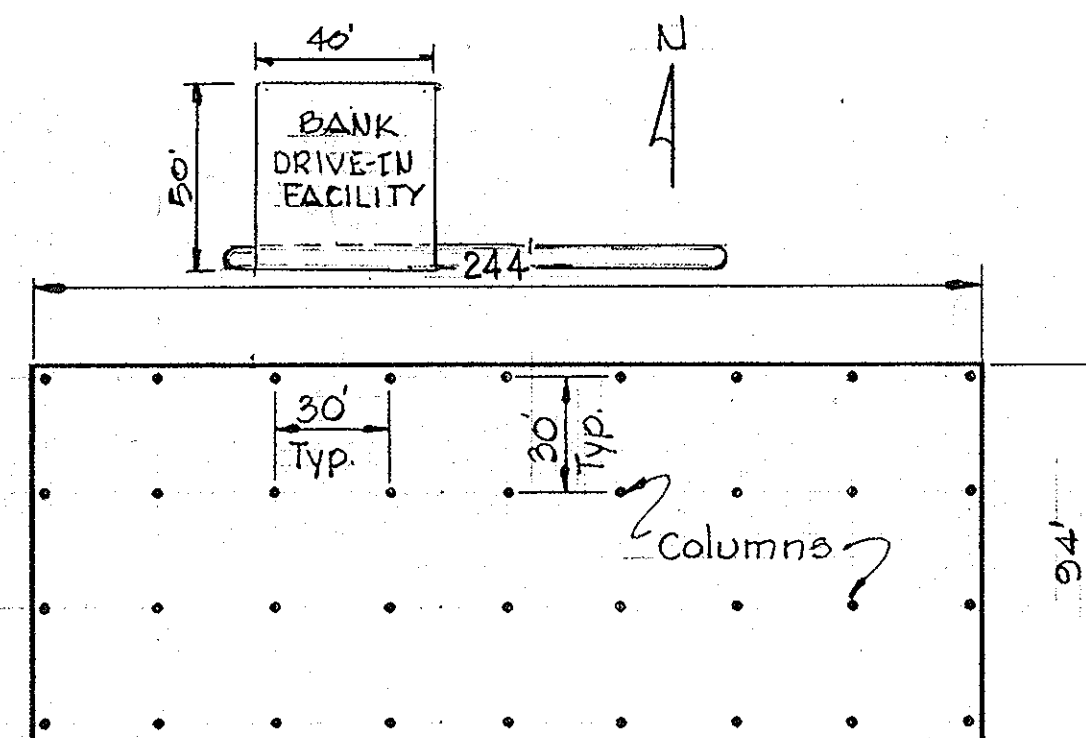
1. Topography taken from field-run topo prepared by Hudkins Associates.
2. Recording reference for Parcel "A" is Plat Book 23 Folio 12.
3. See Architectural Plans for details of proposed office building.
4. All materials and construction shall be in accordance with the Howard County Road Construction Code and Specification.
5. Public Water and Sewer facilities to be utilized.
6. Any damage to the County owned right-of-way or paving shall be corrected at the Developer's expense.
7. Grades have been established to insure positive drainage.
8. Sidewalks shall be scored or otherwise textured to indicate to blind persons the location of doors at building.



VICINITY MAP
SCALE: 1" = 2000'

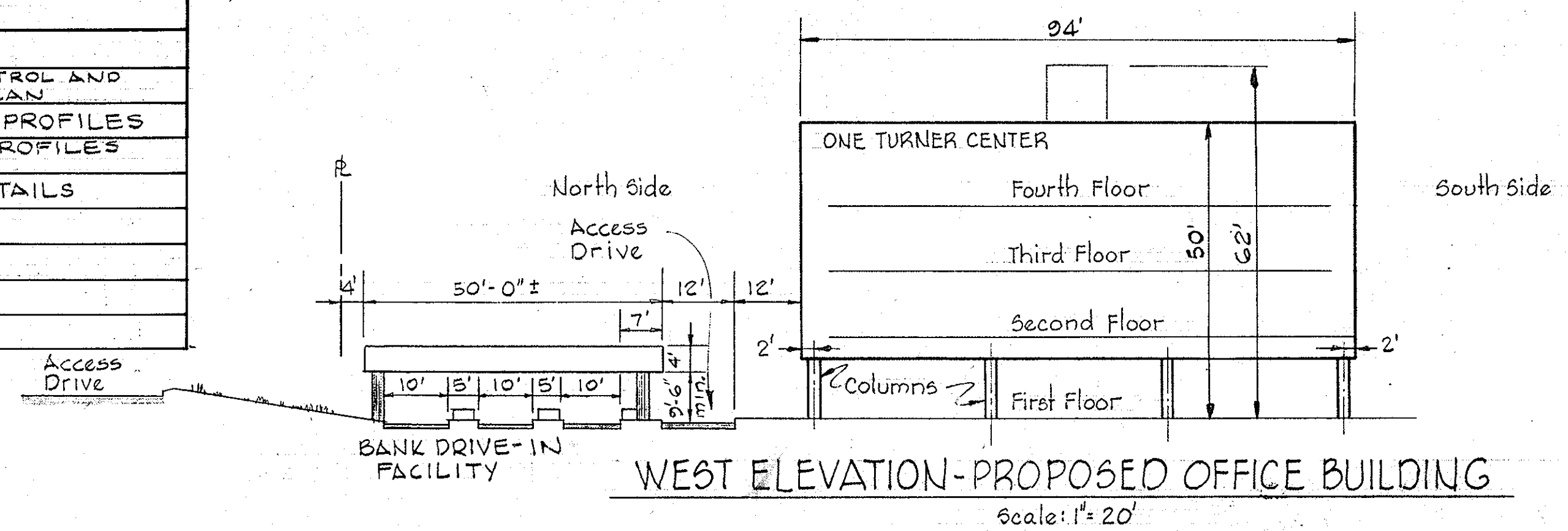
SITE ANALYSIS

Existing Zoning - New Town - Employment Center (Commerical)
 Final Development Plan - Phase 122. Plat Book 20 Folios 125 and 126
 Area of Parcel "A" - 8.258 Ac.
 Ultimate Use - Three - 4 story Office Buildings (To be built in 3 Phases)
 1st Phase Net Leasable Office Space (20,000±/Floor x 4 Floors) - 80,000±
 1st Phase Parking Spaces Required (2 per each 1000±) - 160
 1st Phase Spaces Proposed - 163
 * Ultimate Building Coverage - 19.95%
 * 1st Phase Building Coverage - 6.65%
 * Does not include future parking structure



PLAN-PROPOSED OFFICE BUILDING
Scale: 1" = 50'

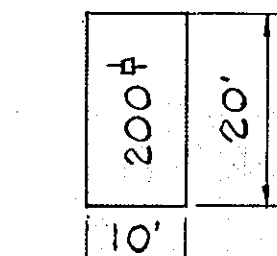
SHEET INDEX	
NO.	DESCRIPTION
1	TITLE SHEET
2	GRADING, DRAINAGE, SEDIMENT CONTROL AND STORM WATER MANAGEMENT PLAN
3	GRADING PLAN AND STORM DRAIN PROFILES
4	WATER AND SEWER PLAN AND PROFILES MISCELLANEOUS DETAILS
5	STORM WATER MANAGEMENT DETAILS
6	DRAINAGE AREA MAP
7	DRAINAGE AREA MAP AND STORM DRAIN DETAILS
8	LANDSCAPE PLAN



WEST ELEVATION-PROPOSED OFFICE BUILDING
Scale: 1" = 20'

LEGEND

- 360--- Existing Contours (2' Interval)
- 360- Proposed Contours (1' Interval)
- F.F. 358.0 Proposed Finished Floor Elevation
- 360x0 Proposed Spot Elevation
- Existing Tree Line
- T.C. Top Curb
- Concrete Walk
- 6" Oak Existing Trees to Remain
- +++ Existing Curb (To Be Removed)
- Pointed Lines
- 7" Concrete Curb & Gutter
- Concrete Barrier Curb
- Traffic Flow Direction
- "Reserved for Handicapped Persons" (Indicate with Sign)
- 12' Min.
- 20' Curb Cut for Handicapped (See Detail)
- Building Entrance



TYPICAL PARKING SPACE
No Scale

APPROVED
PLANNING BOARD
OF HOWARD COUNTY
DATE **8-30-78**

APPROVED FOR PUBLIC WATER AND PUBLIC SEWERAGE SYSTEMS, HOWARD COUNTY HEALTH DEPARTMENT
 COUNTY HEALTH OFFICER: *[Signature]* DATE: 10-9-78
 APPROVED: HOWARD COUNTY OFFICE OF PLANNING AND ZONING
 PLANNING DIRECTOR: *[Signature]* DATE: 10-10-78
 CHIEF DIVISION OF LAND DEVELOPMENT
 APPROVED FOR PUBLIC WATER, PUBLIC SEWER AND STORM DRAINAGE SYSTEMS AND ROADS, HOWARD COUNTY DEPARTMENT OF PUBLIC WORKS
 DIRECTOR: *[Signature]* DATE: 10-5-78
 CHIEF, BUREAU OF ENGINEERING

TURNER OFFICE CENTER COMPANY
 C/O Howard Res. & Develop. Corp.
 Rouse Company Building
 10275 Little Patuxent Parkway
 Columbia, Md.

WHITMAN, REQUARDT & ASSOCIATES
 ENGINEERS
 1304 ST. PAUL STREET
 BALTIMORE, MARYLAND 21202
[Signature]
 Kenneth A. McCord RE. No. 1374

TAX MAP 36
 PARCEL 35A

NO.	DATE	DESCRIPTION OF REVISIONS
1	9/13/78	As per Planning comments
2	8/28/78	As per Planning and DPW Comments

COLUMBIA SITE PLANS
 FOR TOWN CENTER SECTION 2 AREA 4 PARCEL "A"
TITLE SHEET
 SHEET 1 OF 8
 ELECTION DISTRICT NO. 5, HOWARD COUNTY, MARYLAND
 DATE: August 18, 1978
 SCALE: As Shown

APPROVED FOR PUBLIC WATER AND PUBLIC SEWERAGE SYSTEMS, HOWARD COUNTY HEALTH DEPARTMENT
 COUNTY HEALTH OFFICER DATE
 APPROVED: HOWARD COUNTY OFFICE OF PLANNING AND ZONING
 PLANNING DIRECTOR DATE
 CHIEF DIVISION OF LAND DEVELOPMENT DATE
 APPROVED FOR PUBLIC WATER, PUBLIC SEWER, AND STORM DRAINAGE SYSTEMS AND ROADS, HOWARD COUNTY DEPARTMENT OF PUBLIC WORKS
 DIRECTOR DATE
 CHIEF, BUREAU OF ENGINEERING DATE

STORM DRAIN STRUCTURE SCHEDULE				
NO.	TYPE	TOPELEV.	INVELEV.	LOCATION
I-1	Std. A-5 Inlet, Width=2.5'	353.00	349.18	See Plan and Profile
I-2	Std. A-5 Inlet, Width=2.5'	357.80	351.30	See Plan and Profile
I-3	Std. A-10 Inlet, Width=2.5'	358.80	354.55	See Plan and Profile
I-4	Std. "D" Inlet, Width=2.5'	354.93	351.66	See Plan and Profile
I-5	Std. A-5 Inlet, Width=2.5'	356.00	352.00	See Plan and Profile
MH-1	Std. Manhole	351.80	345.67	See Plan and Profile
S-1	See Spec. Detail, Sht. of		349.00	See Plan and Profile
S-2	See Spec. Detail, Sht. of		347.50	See Plan and Profile
S-3	See Spec. Detail, Sht. of		352.82	See Plan and Profile

NOTES:
 1. See Sheet 3 for Storm Drain Profiles.
 2. See Sheet 5 for Storm Water Management Details and Specifications.
 3. See Sheets 6 and 7 for Drainage Area Maps.

CERTIFICATION BY THE DEVELOPER
 I certify that the construction of this pond will be done according to this plan. I also authorize periodic on-site inspection by the Howard Soil Conservation District or their authorized agents as are deemed necessary. Deviation from this plan will not be made unless authorized by the Howard Soil Conservation District.
 I will supply the Howard Soil Conservation District Office with an as-built plan of this pond within 30 days of the ponds completion.
 Frederick W. Glassberg 7/7/78
 Frederick W. Glassberg Date

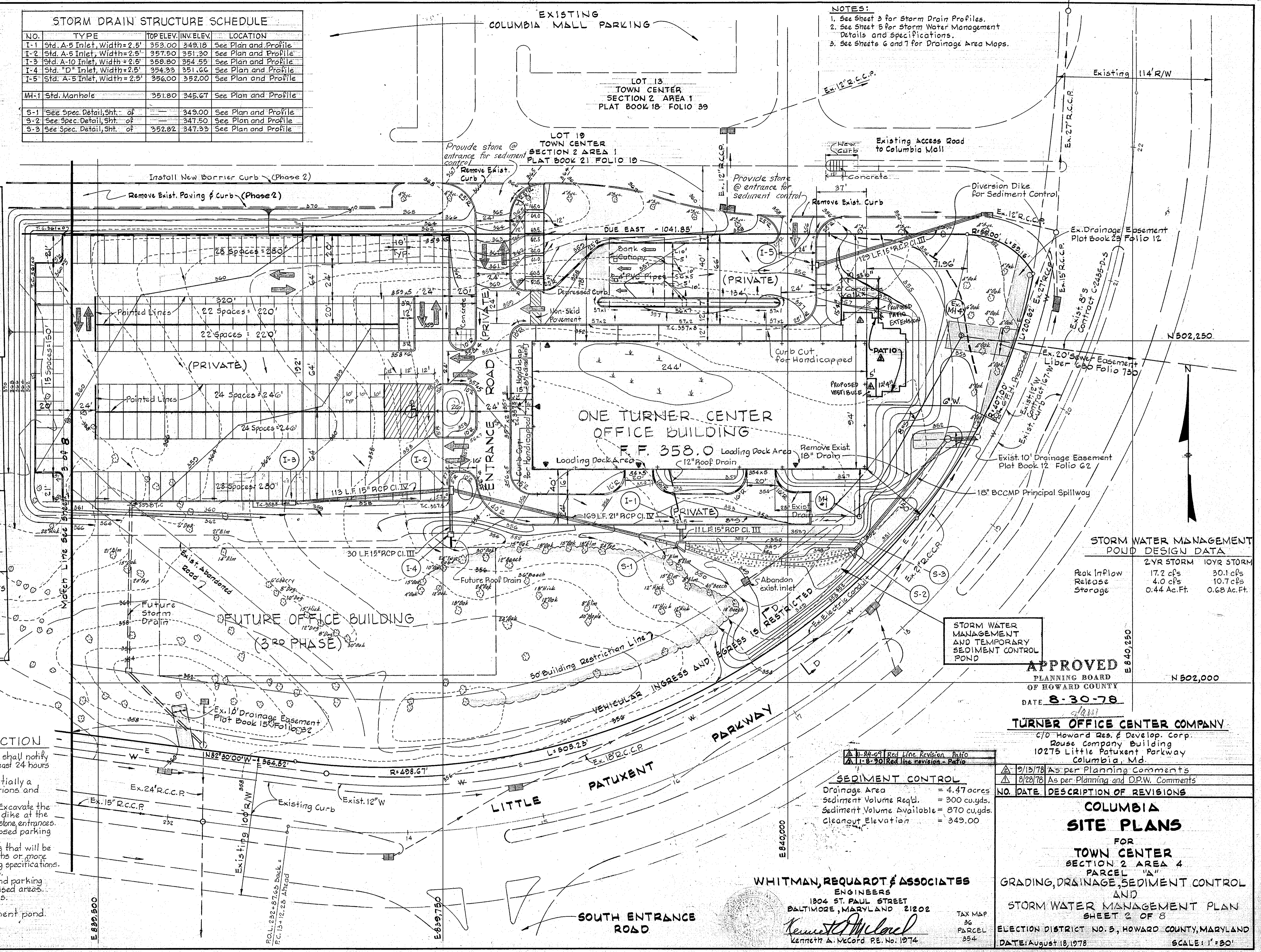
CERTIFICATION BY THE ENGINEER
 I certify that this plan for small pond construction represents a practical and workable plan based on my personal knowledge of the site conditions and that it was prepared in accordance with the requirements of the Howard Soil Conservation District.
 Kenneth A. McCord 7-18-78
 Kenneth A. McCord P.E. 1974 Date

THIS PLAN HAS BEEN REVIEWED BY THE HOWARD SOIL CONSERVATION DISTRICT AND MEETS THE TECHNICAL REQUIREMENTS FOR SMALL POND CONSTRUCTION
 Winifred Rudette 9/27/78
 U.S. SOIL CONSERVATION DISTRICT Date

THIS PLAN FOR SMALL POND CONSTRUCTION MEETS THE REQUIREMENTS OF THE HOWARD SOIL CONSERVATION DISTRICT.
 APPROVED: Robert W. Zichin 9/27/78
 HOWARD S.C.D. Date

PLAN NUMBER

- SEQUENCE OF CONSTRUCTION**
1. Prior to starting any work, the contractor shall notify the Howard Soil Conservation District at least 24 hours in advance of notice to begin.
 2. The storm water management pond is initially a sediment basin; see the pond specifications and details on sheet 5.
 3. Construct the 18-inch principal spillway. Excavate the pond, construct the earthen diversion dike at the northeast corner of the property and the stone entrances.
 4. Clear the trees that exist within the proposed parking area.
 5. Strip and grade the site. Topsoil stockpiles that will be left standing for a period of three months or more shall be stabilized. See temporary seeding specifications.
 6. Construct the storm drains and utilities.
 7. Construct the office building, roads and parking areas and stabilize the proposed grassed areas. See permanent seeding specifications.
 8. Remove the diversion dike.
 9. Refurbish the storm water management pond. See General Notes on sheet 5.



STORM WATER MANAGEMENT POND DESIGN DATA

	2YR STORM	10YR STORM
Peak Inflow	17.2 cfs	30.1 cfs
Release	4.0 cfs	10.7 cfs
Storage	0.44 Ac.Ft.	0.68 Ac.Ft.

STORM WATER MANAGEMENT AND TEMPORARY SEDIMENT CONTROL POND

APPROVED
 PLANNING BOARD OF HOWARD COUNTY
 DATE 8-30-78

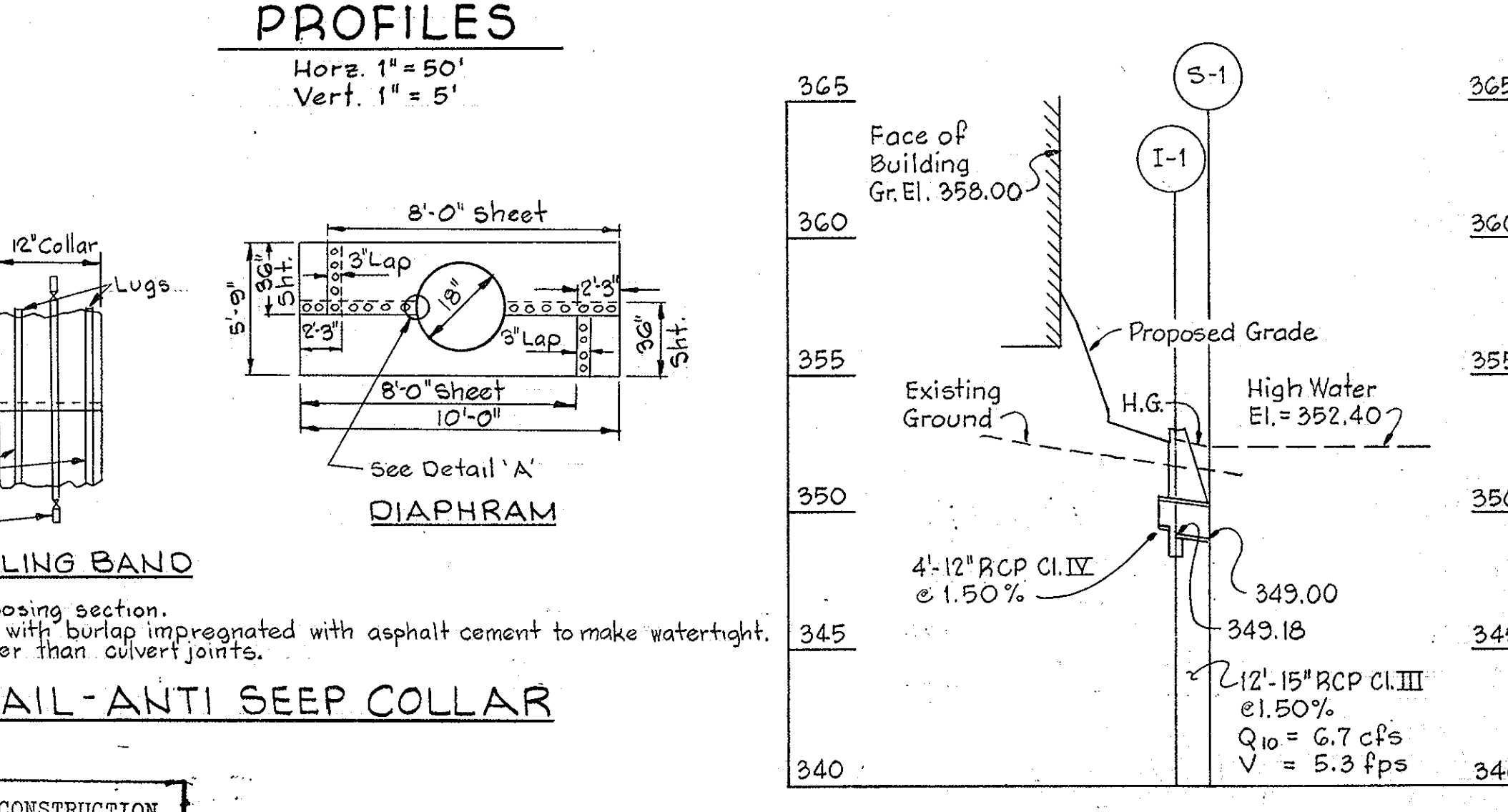
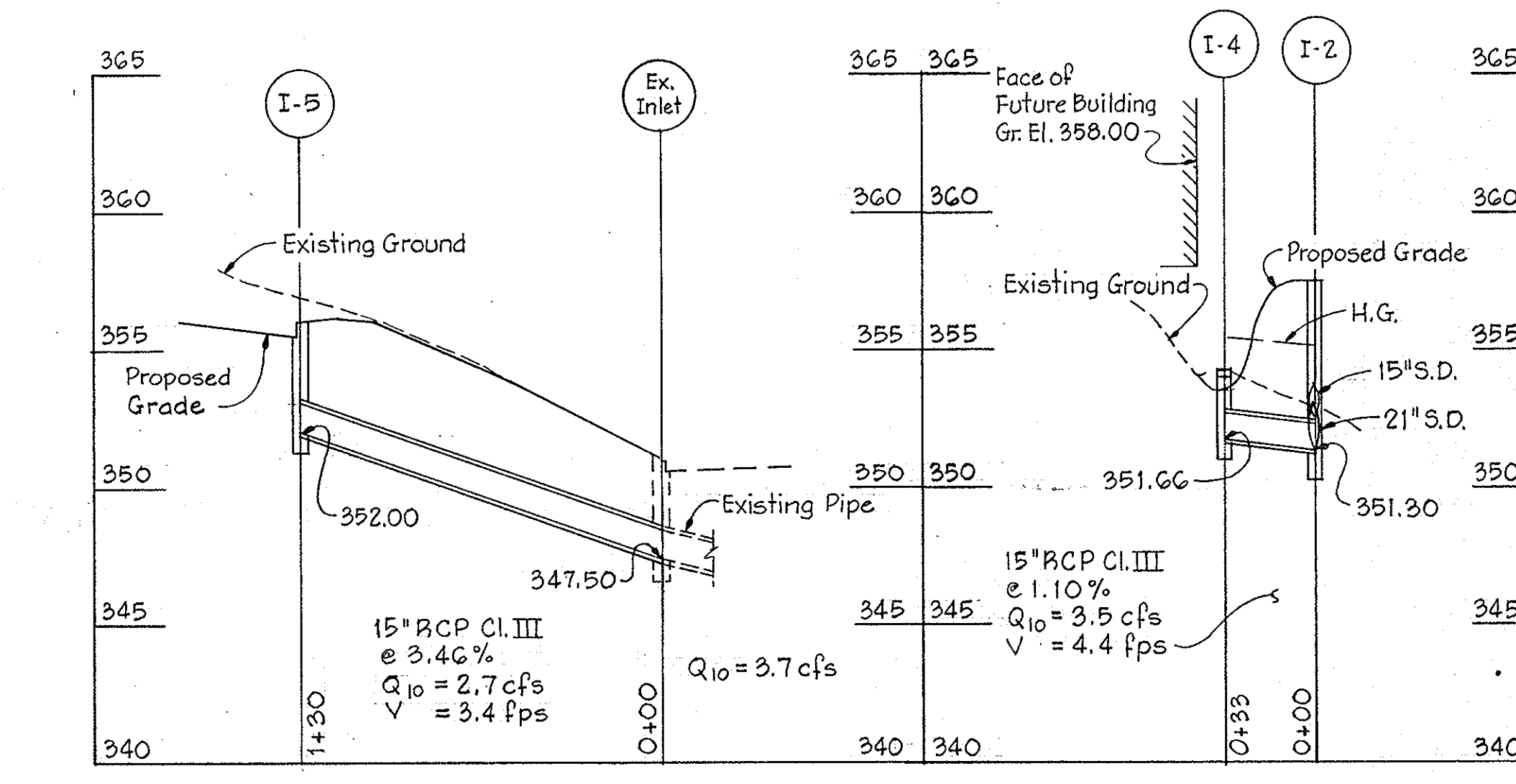
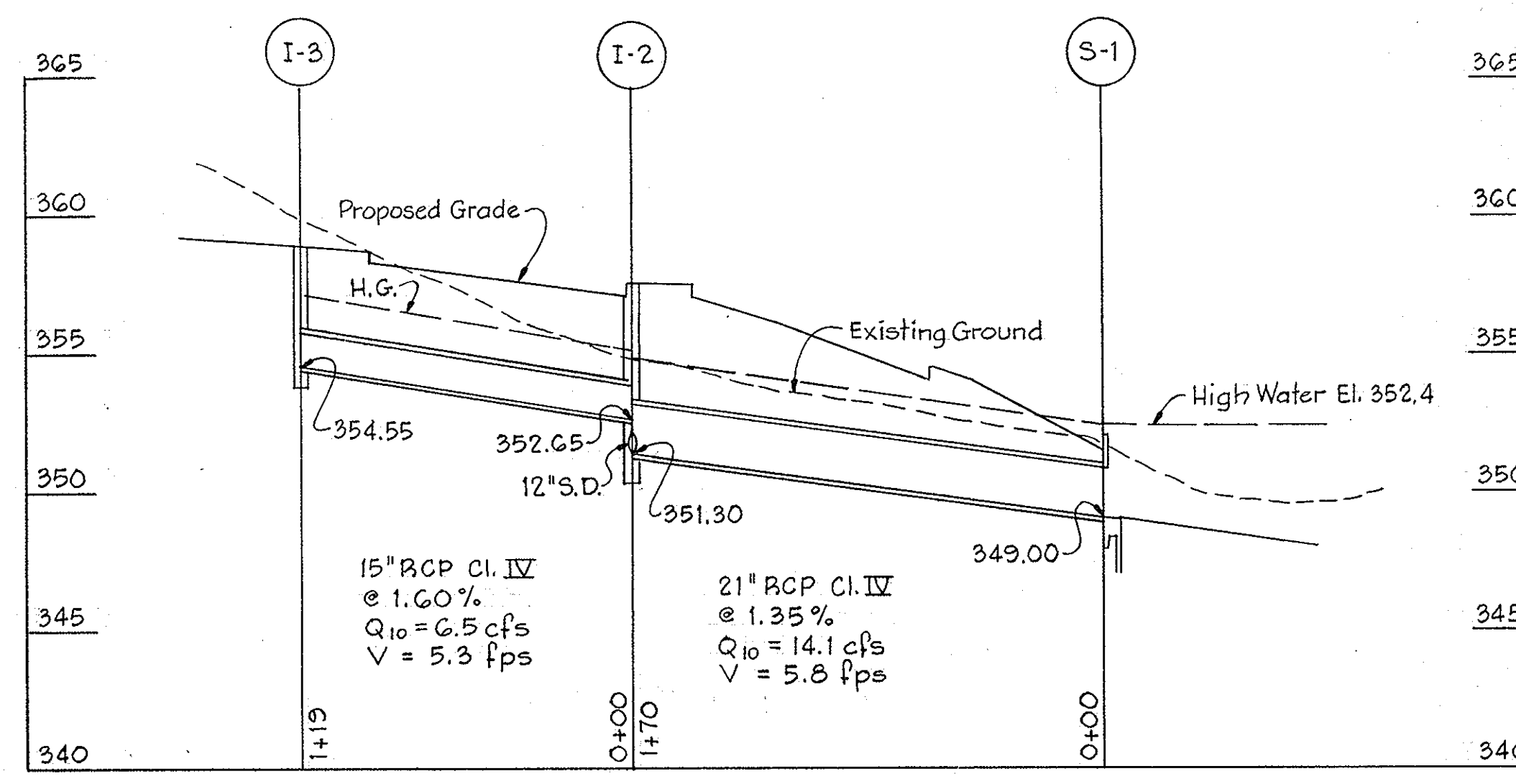
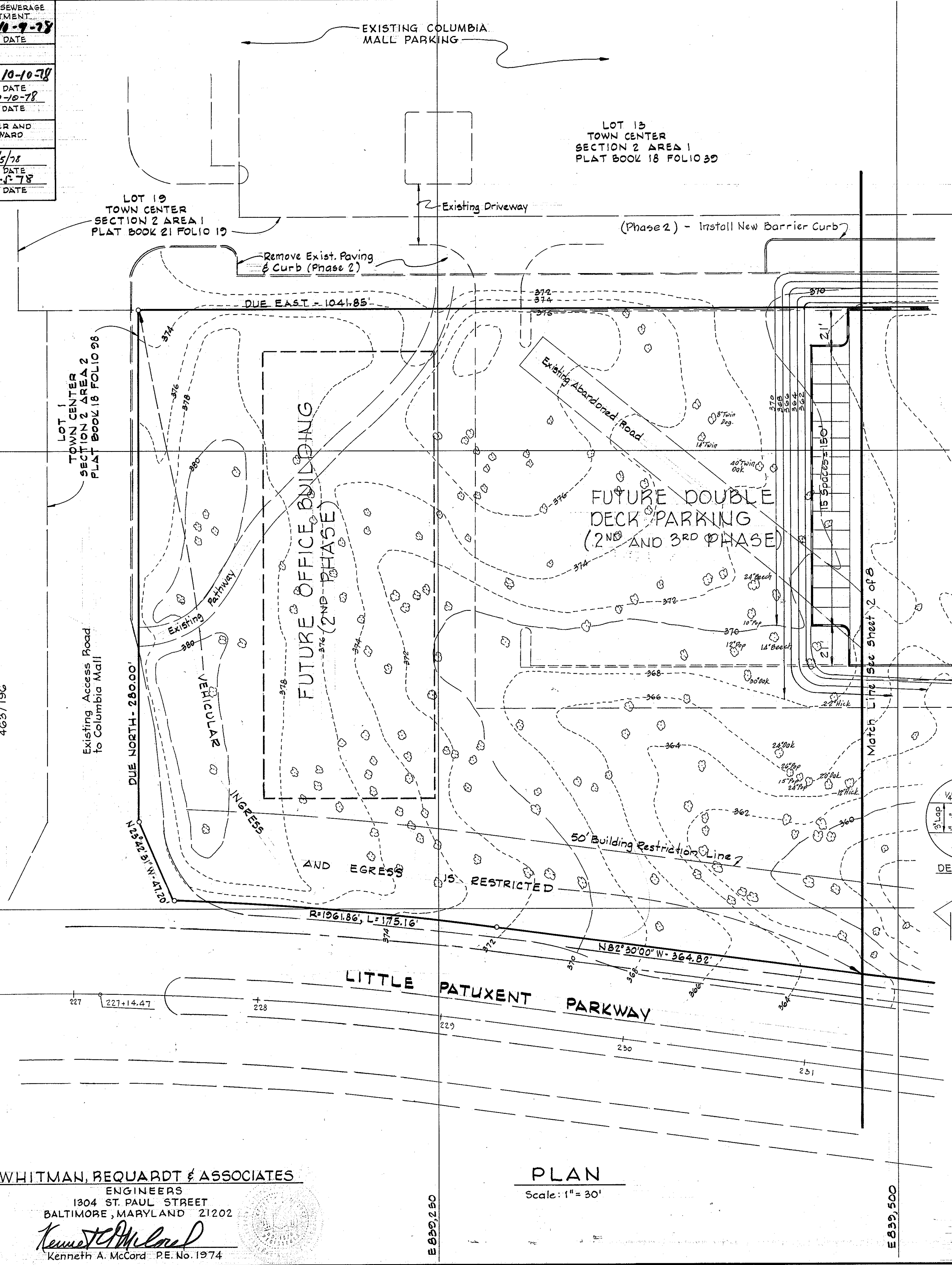
TURNER OFFICE CENTER COMPANY
 c/o Howard Res. & Develop. Corp.
 Rouse Company Building
 10275 Little Patuxent Parkway
 Columbia, Md.

SEDIMENT CONTROL
 Drainage Area = 4.47 acres
 Sediment Volume Req'd. = 300 cu.yds.
 Sediment Volume Available = 870 cu.yds.
 Cleanout Elevation = 349.00

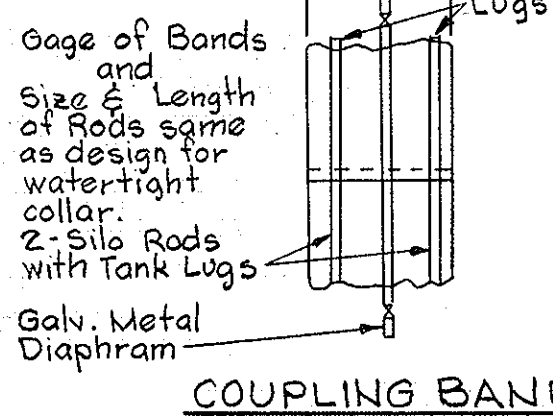
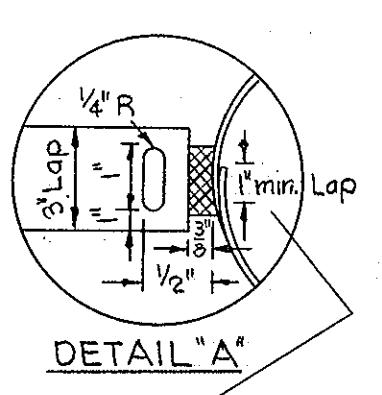
WHITMAN, REQUARDT & ASSOCIATES
 ENGINEERS
 1304 ST. PAUL STREET
 BALTIMORE, MARYLAND 21202
 Kenneth A. McCord
 Kenneth A. McCord P.E. No. 1974

COLUMBIA SITE PLANS
 FOR TOWN CENTER SECTION 2 AREA 4 PARCEL "A"
 GRADING, DRAINAGE, SEDIMENT CONTROL AND STORM WATER MANAGEMENT PLAN SHEET 2 OF 8
 ELECTION DISTRICT NO. 5, HOWARD COUNTY, MARYLAND
 DATE: August 18, 1978 SCALE: 1"=90'

APPROVED FOR PUBLIC WATER AND PUBLIC SEWERAGE SYSTEMS, HOWARD COUNTY HEALTH DEPARTMENT.
 COUNTY HEALTH OFFICER *Joseph W. Grogan* 11-9-78 DATE
 APPROVED: HOWARD COUNTY OFFICE OF PLANNING AND ZONING.
 PLANNING DIRECTOR *Thomas J. Amigo* 10-10-78 DATE
 CHIEF DIVISION OF LAND DEVELOPMENT *Tom W. Muehlen* 10-10-78 DATE
 APPROVED FOR PUBLIC WATER, PUBLIC SEWER AND STORM DRAINAGE SYSTEMS AND ROADS, HOWARD COUNTY DEPARTMENT OF PUBLIC WORKS.
 DIRECTOR *Richard C. Freudenberger* 10/5/78 DATE
 CHIEF, BUREAU OF ENGINEERING *W.O. Pickett* 10-5-78 DATE



PROFILES
 Horz. 1" = 50'
 Vert. 1" = 5'



1. Provide match for yoke of opposing section.
2. During assembly fill in open area with burlap impregnated with asphalt cement to make watertight.
3. Diaphragm to be located at other than culvert joints.

DETAIL - ANTI SEEP COLLAR

THIS PLAN FOR SMALL POND CONSTRUCTION MEETS THE REQUIREMENTS OF THE HOWARD SOIL CONSERVATION DISTRICT.
 Approved *Robert J. Zahn* date 9-27-78
 Plan Number *X*

THIS PLAN HAS BEEN REVIEWED FOR THE HOWARD SOIL CONSERVATION DISTRICT AND MEETS THE TECHNICAL REQUIREMENTS FOR SMALL POND CONSTRUCTION.
Wendell Bundette 9/27/78
 U. S. Soil Conservation Service Date

APPROVED
 PLANNING BOARD
 OF HOWARD COUNTY
 DATE **8-30-78**

TURNER OFFICE CENTER COMPANY
 C/O Howard Res. & Develop. Corp.
 Rouse Company Building
 10275 Little Patuxent Parkway
 Columbia, Md.

TAX MAP 36
 PARCEL 354

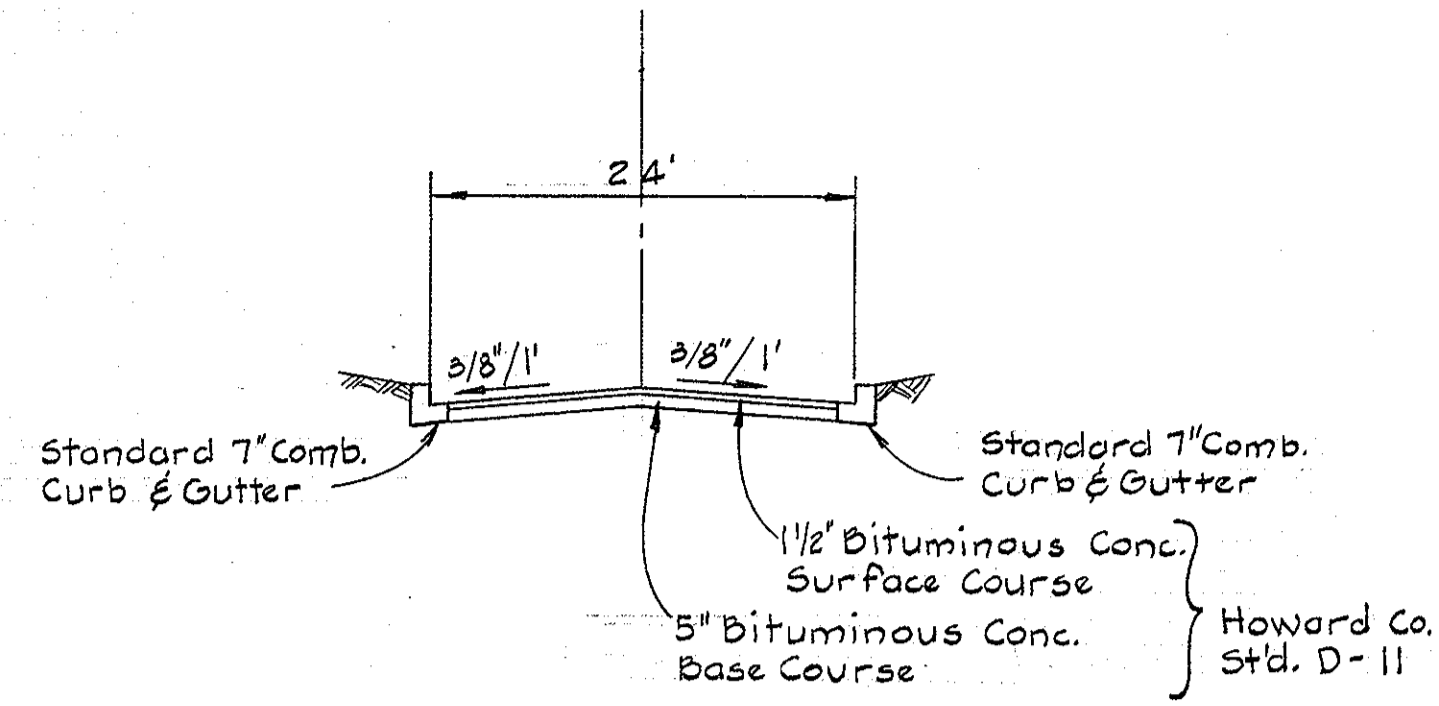
NO.	DATE	DESCRIPTION OF REVISIONS
1	9/13/78	As per Planning comments
2	8/23/78	As per Planning and DPW Comments

COLUMBIA SITE PLANS
 FOR
TOWN CENTER SECTION 2 AREA 4 PARCEL "A"
GRADING PLAN AND STORM DRAIN PROFILES
 SHEET 3 OF 8
 ELECTION DISTRICT NO. 5, HOWARD COUNTY, MARYLAND
 DATE: August 18, 1978 SCALE: As Shown

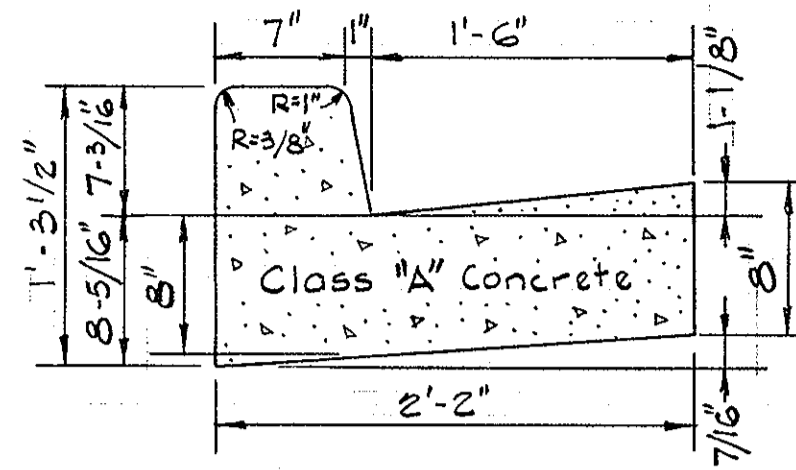
WHITMAN, REQUARDT & ASSOCIATES
 ENGINEERS
 1304 ST. PAUL STREET
 BALTIMORE, MARYLAND 21202
Kenneth A. McCord
 Kenneth A. McCord P.E. No. 1974

PLAN
 Scale: 1" = 30'

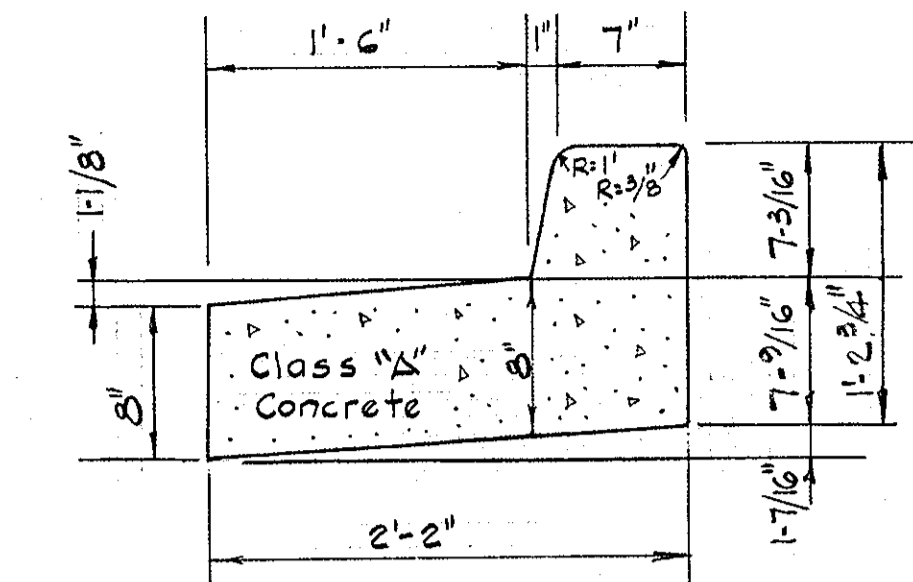
APPROVED FOR PUBLIC WATER AND PUBLIC SEWERAGE SYSTEMS, HOWARD COUNTY HEALTH DEPARTMENT
 COUNTY HEALTH OFFICE DATE 10-9-78
 APPROVED: HOWARD COUNTY OFFICE OF PLANNING AND ZONING
 PLANNING DIRECTOR DATE 10-10-78
 CHIEF DIVISION OF LAND DEVELOPMENT DATE 10-10-78
 APPROVED FOR PUBLIC WATER, PUBLIC SEWER, AND STORM DRAINAGE SYSTEMS AND ROADS, HOWARD COUNTY DEPARTMENT OF PUBLIC WORKS
 DIRECTOR DATE 10/5/78
 CHIEF BUREAU OF ENGINEERING DATE 10-10-78



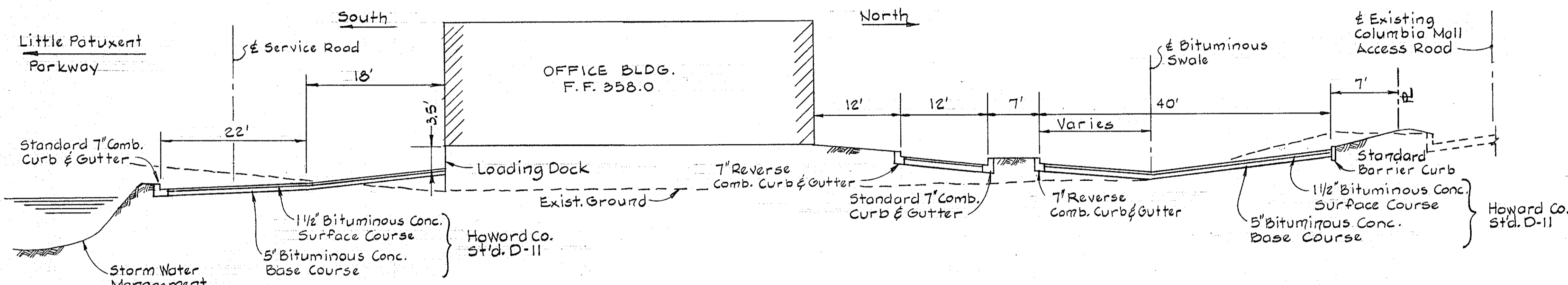
TYPICAL SECTION-ENTRANCE ROAD
 No Scale



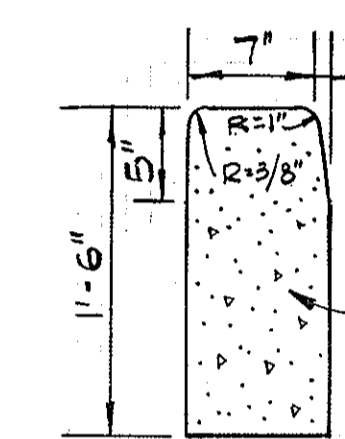
STANDARD 7" COMBINATION CURB & GUTTER
 (Howard County Standard D-40)
 No Scale



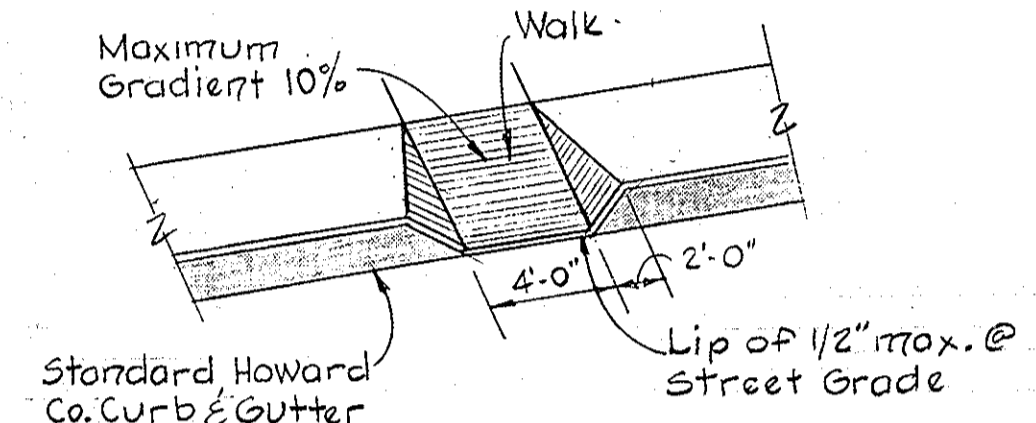
7" REVERSE COMBINATION CURB AND GUTTER
 No Scale



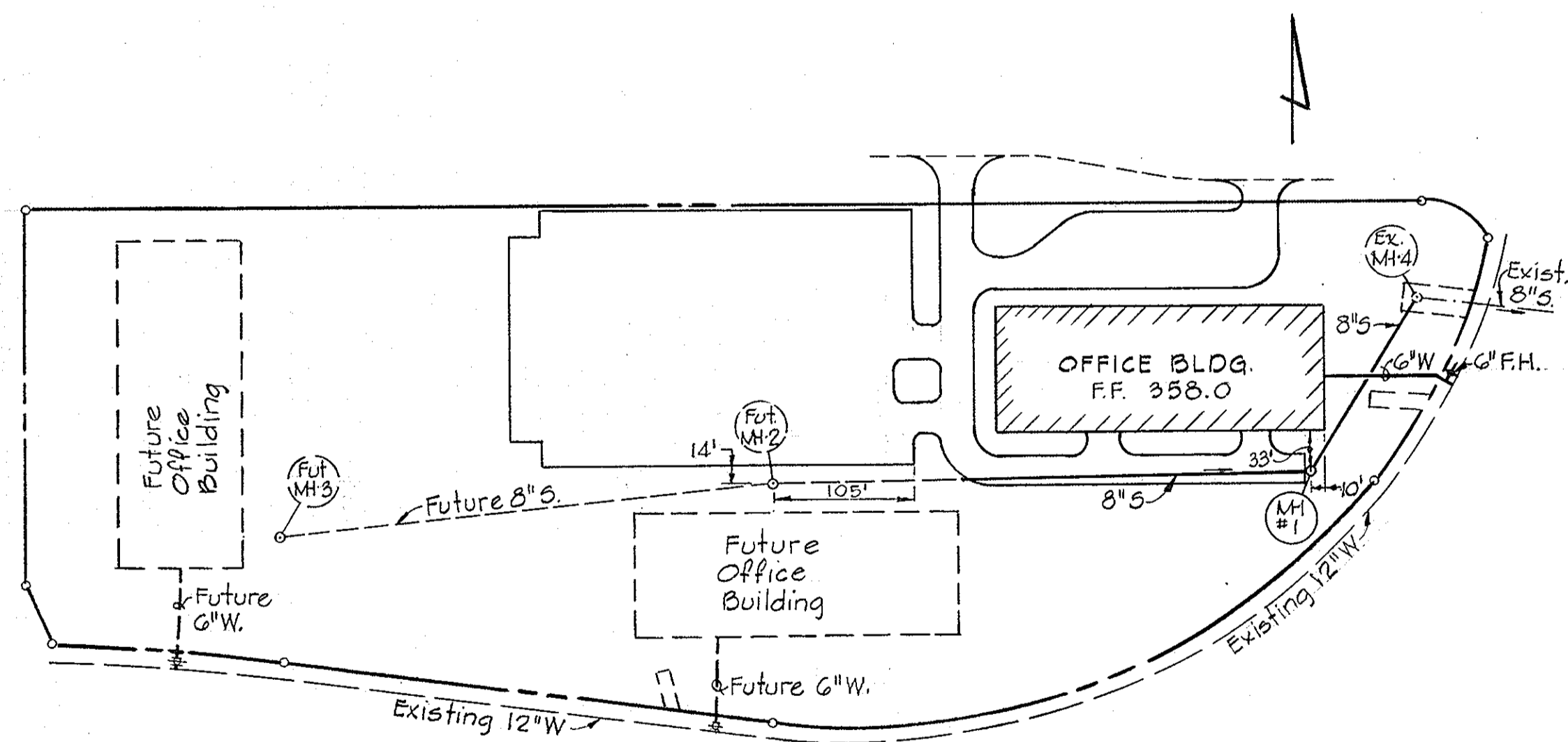
SECTION THRU PROPOSED DEVELOPMENT
 No Scale



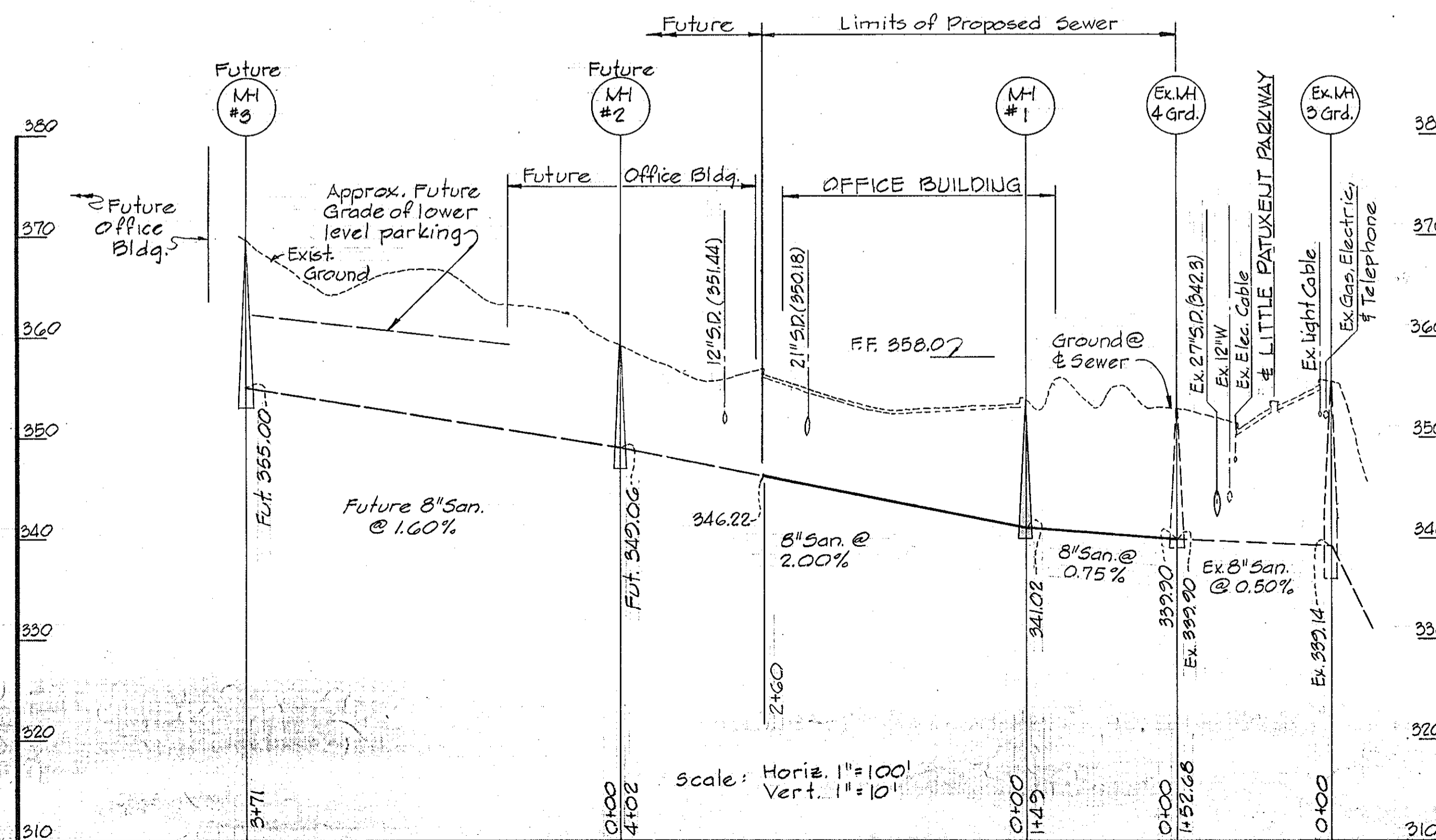
STANDARD BARRIER CURB
 (Howard County Standard D-40)
 No Scale



CURB CUT FOR HANDICAPPED
 No Scale



WATER & SEWER PLAN
 Scale: 1" = 100'



PROFILE - 8" S

APPROVED
 PLANNING BOARD
 OF HOWARD COUNTY
 DATE 8-30-78

TURNER OFFICE CENTER COMPANY
 c/o Howard Res. & Develop. Corp.
 Rouse Company Building
 10275 Little Patuxent Parkway
 Columbia, Md.

NO.	DATE	DESCRIPTION OF REVISIONS
1	9/13/78	As per Planning comments
2	8/28/78	As per Planning and DPW Comments

COLUMBIA
 SITE PLANS

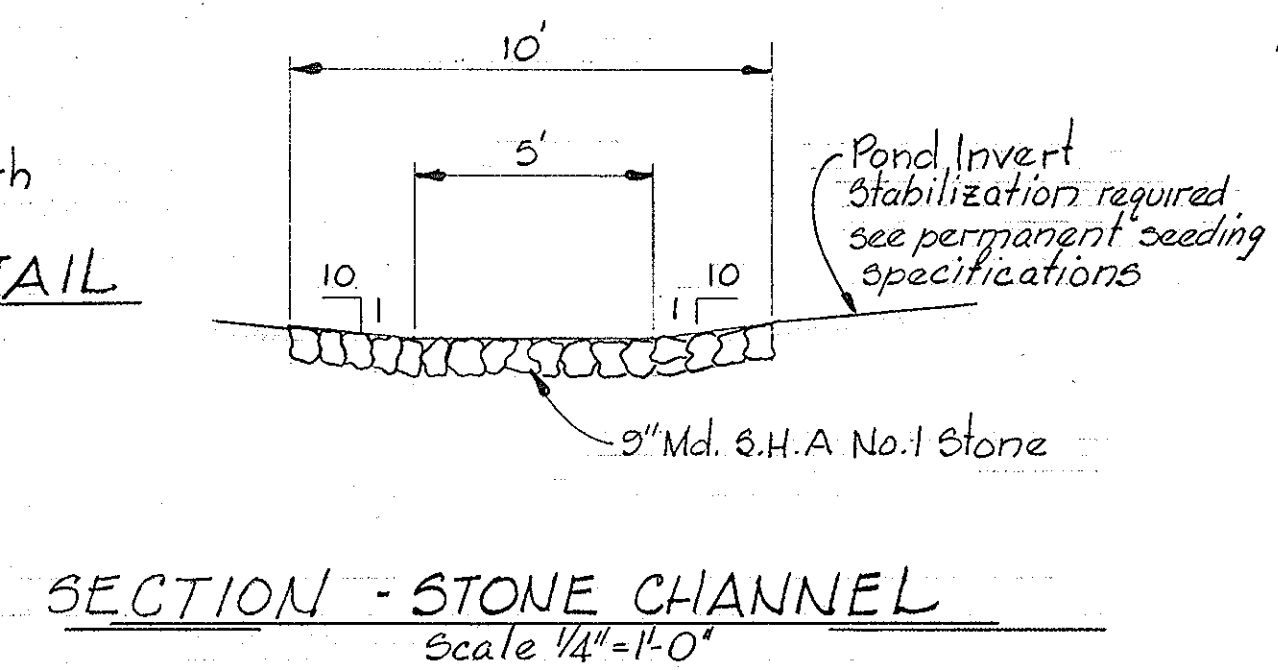
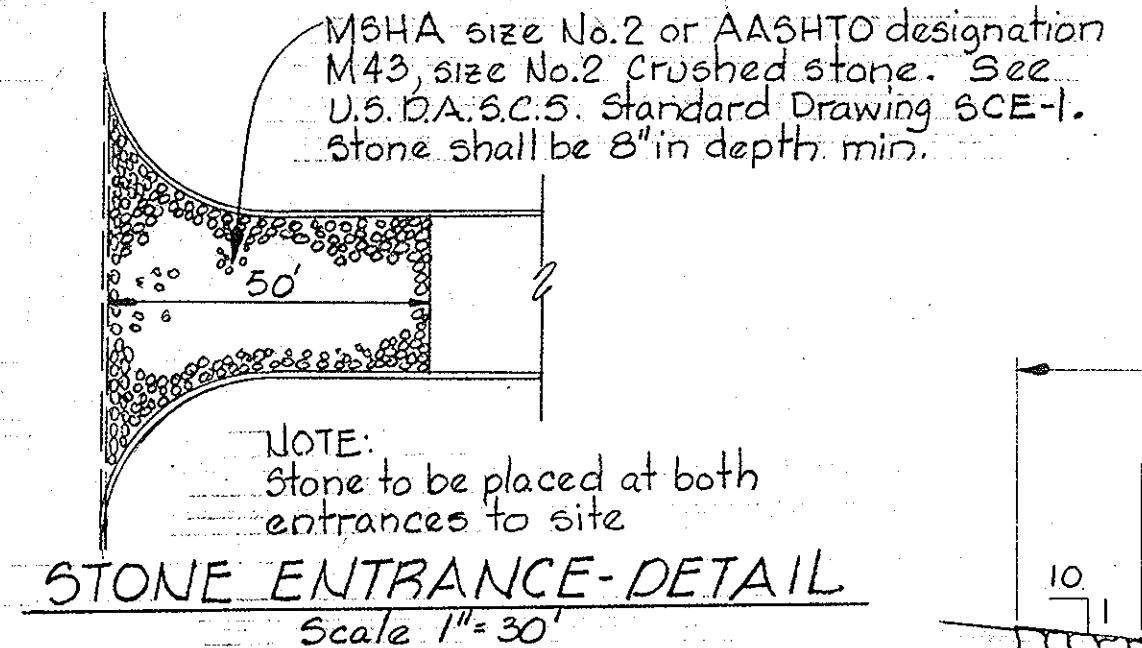
FOR
 TOWN CENTER
 SECTION 2 AREA 4
 PARCEL "A"

WATER AND SEWER PLAN AND PROFILES
 MISCELLANEOUS DETAILS
 SHEET 4 OF 8

ELECTION DISTRICT NO. 5, HOWARD COUNTY, MARYLAND
 DATE: August 18, 1978 SCALE: As Shown

WHITMAN, REQUARDT & ASSOCIATES
 ENGINEERS
 1304 ST. PAUL STREET
 BALTIMORE, MARYLAND 21202
 Kenneth A. McCord, P.E. No. 12714

APPROVED FOR PUBLIC WATER AND PUBLIC SEWERAGE SYSTEMS, HOWARD COUNTY HEALTH DEPARTMENT
 COUNTY HEALTH OFFICER: *10-9-78* DATE
 APPROVED: HOWARD COUNTY OFFICE OF PLANNING AND ZONING
 PLANNING DIRECTOR: *10-10-78* DATE
 CHIEF DIVISION OF LAND DEVELOPMENT: *10-10-78* DATE
 APPROVED FOR PUBLIC WATER, PUBLIC SEWER AND STORM DRAINAGE SYSTEMS AND ROADS, HOWARD COUNTY DEPARTMENT OF PUBLIC WORKS
 DIRECTOR: *10/5/78* DATE
 CHIEF BUREAU OF ENGINEERING: *10-5-78* DATE



GENERAL NOTES

- The Pond shall function initially as a SEDIMENT BASIN. The Pond shall be constructed prior to any construction work intended on this site.
- Initial construction shall include all the work as shown except invert seeding.
- Permanent seeding is required for all the graded surfaces within the limits of construction. Initial permanent seeding shall be applied to all cut and fill embankments from top to top of slope. The invert of the Pond shall be permanently seeded after the pond is refurbished. Refurbishing of the pond shall be done after all construction is completed and grass is established on the site. Refurbishing of the Pond shall include the removal of all sediment; the restoration of the pond to the lines and grades as shown on the Plans; the replacement of all filter cloth and rip-rap stone where necessary; permanent seeding of the pond invert; permanent re-seeding of all the disturbed graded surfaces and the cleaning of the principle spillway.
- After the Pond is completely refurbished the owner shall submit "As Built" drawings to the Howard County Soil Conservation District.
- Poly Filter-X cloth (CARBTHAGE MILLS INCORPORATED) or equal, shall be placed under all rip rap construction, full length and width of rip-rap.
- Stone shall be Maryland S.H.A. Class I medium Rip Rap unless otherwise noted.

SPECIFICATIONS

PERMANENT SEEDING (See General Notes)

Lime = 2 tons/acre agricultural ground limestone
 Fertilizer = 100 lbs/acre (10-10-10)
 Seeding = 100 lbs/acre of the following
 20% Kentucky Blue Grass
 20% Merion Blue Grass
 55% Creeping Red Fescue
 5% Redtop

Mulch required - Mulch areas with straw at the rate of 75 lbs/1000 sq. ft. or 1.5 tons/acre
 Anchor with asphalt at the rate of 480 gallons/acre.
 Stabilization of slopes steeper than 3:1 shall be planted with crownvetch including 15 lbs/acre (0.34 lbs/1000 sq. ft.) Kentucky 31 Tall Fescue 40 lbs/acre (1 lb/1000 sq. ft.)

EARTH DAM EMBANKMENT
 Pond is an excavated pond. No earth dam embankment is required.

PRINCIPLE SPILLWAY

- Backfill around BCCMP barrel shall be placed in horizontal layers not to exceed 4 inches in thickness and compacted by hand tamper or other compaction equipment. At no time during the backfilling operation, shall construction equipment be allowed to operate closer than 4 feet to any part of the BCCMP barrel. Under no circumstances shall the contractor drive equipment over any part of the BCCMP barrel unless there is a compacted fill to a depth of 24 inches or greater over the BCCMP barrel.
- The BCCMP barrel shall be firmly and uniformly bedded throughout its entire length. Where rock or other unsuitable soil is encountered under the pipe, all such material shall be removed and replaced with suitable earth compacted to provide adequate support.

CONCRETE

Concrete shall have a minimum of 6 bags of cement per cubic yard and water content not to exceed 6 gallons per bag of cement. Slump shall range 3" - 4". All concrete shall be transit mix.

TEMPORARY SEEDING

- The diversion dikes Topsoil stockpile shall be hydroseeded as follows:
 a- ground limestone (50#/1000#)
 b- fertilizer 10-10-10 (25#/1000#)
 c- Seed - Italian Ryegrass, 40#/acre
- Mulch with straw at the rate of 50#/1000# or one ton per acre. Anchor with asphalt at the rate of 480 gallons/acre

CERTIFICATION BY THE DEVELOPER

"I certify that the construction of this pond will be done according to this plan. I also authorize periodic on-site inspection by the Howard Soil Conservation District or their authorized agents as are deemed necessary. Deviation from this plan will not be made unless authorized by the Howard Soil Conservation District. I will supply the Howard Soil Conservation District Office with an as-built plan of this pond within 30 days of the ponds completion."

Frederick W. Glassberg 7/18/78
 Vice President Date

TURNER OFFICE CENTER COMPANY
 C/O Howard Res. & Develop. Corp.
 Rouse Company Building
 10275 Little Patuxent Parkway
 Columbia, Md.

CERTIFICATION BY THE ENGINEER

"I certify that this plan for small pond construction represents a practical and workable plan based on my personal knowledge of the site conditions and that it was prepared in accordance with the requirements of the Howard Soil Conservation District."

Kenneth A. McCord
 Kenneth A. McCord P.E. 1974 Date.

THIS PLAN HAS BEEN REVIEWED BY THE HOWARD SOIL CONSERVATION DISTRICT AND MEETS THE TECHNICAL REQUIREMENTS FOR SMALL POND CONSTRUCTION

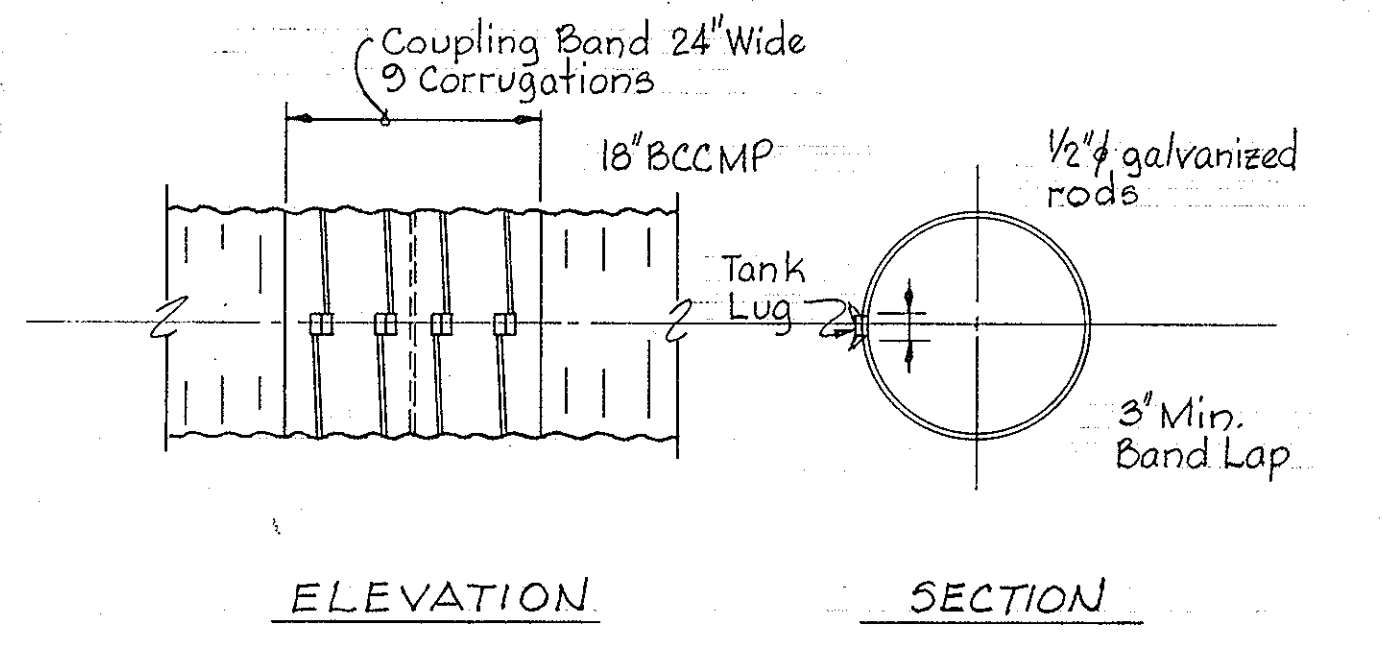
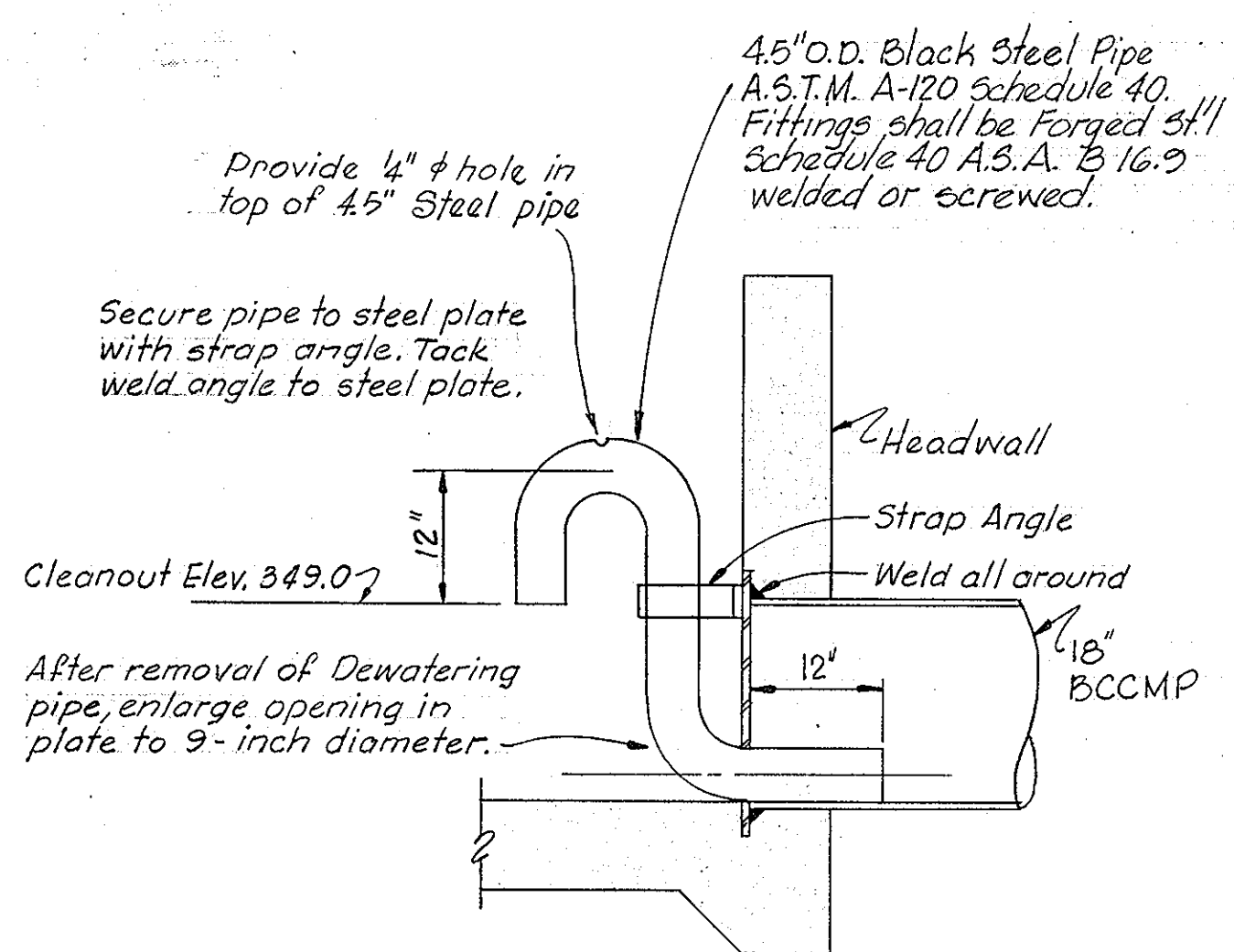
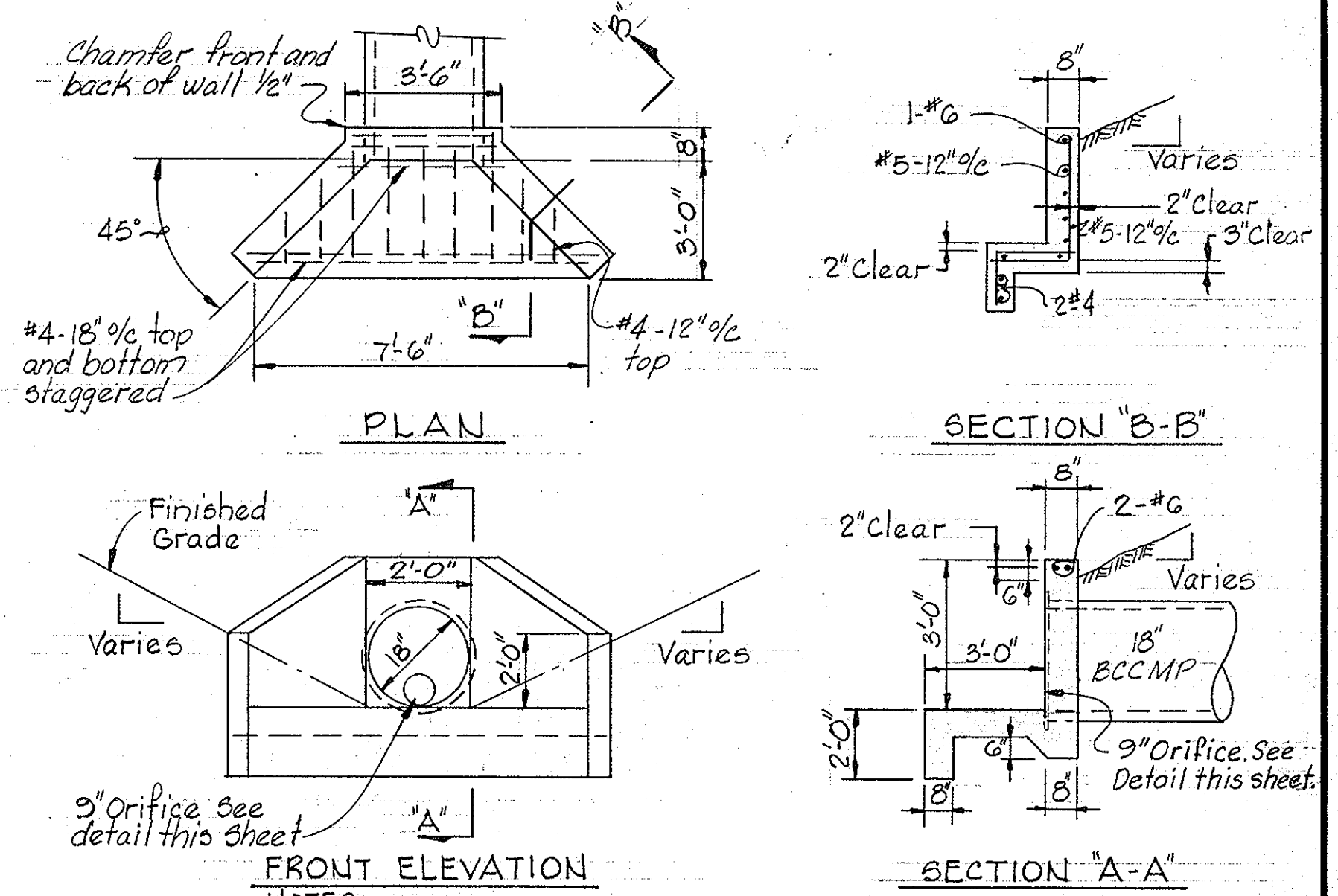
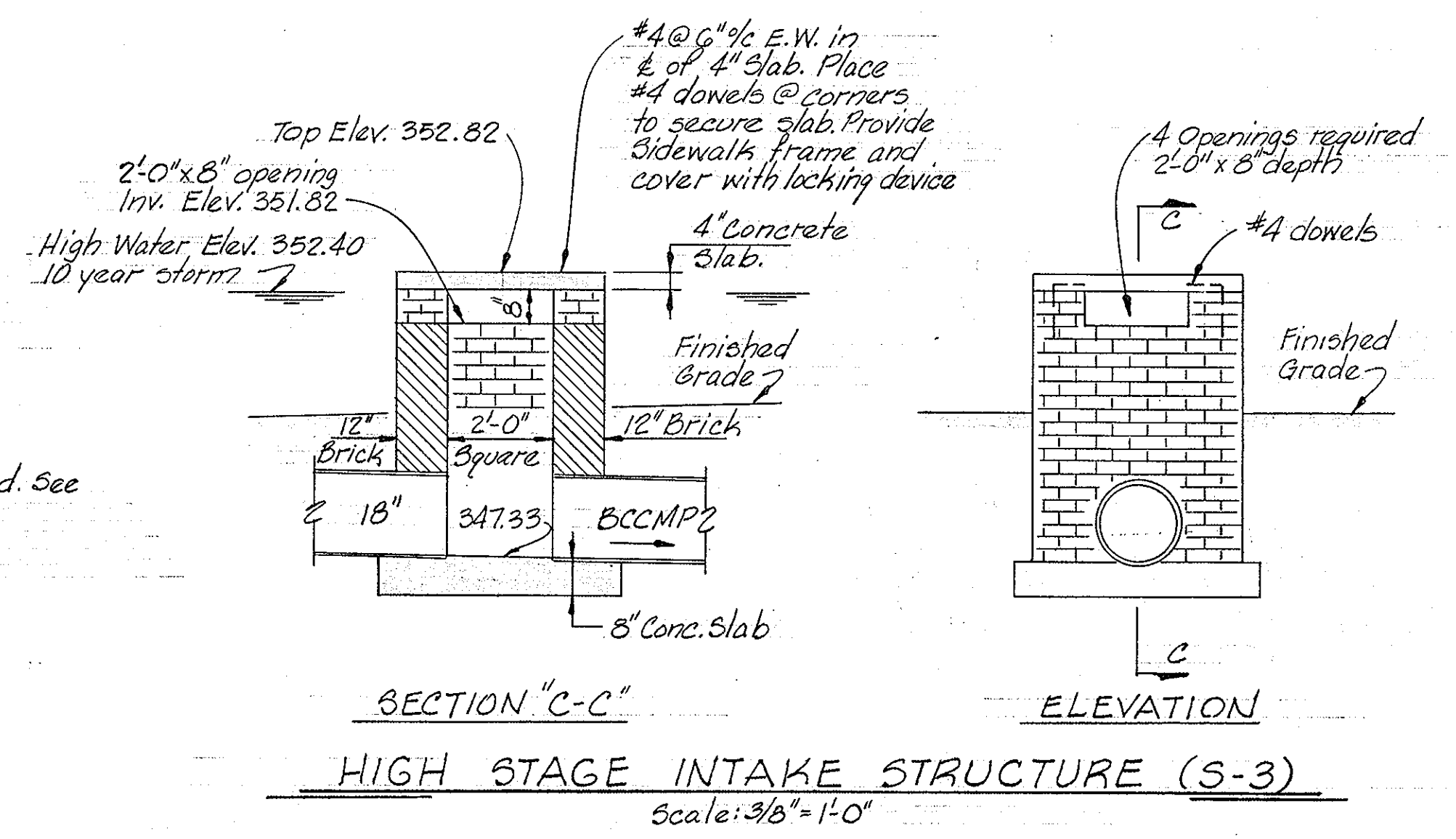
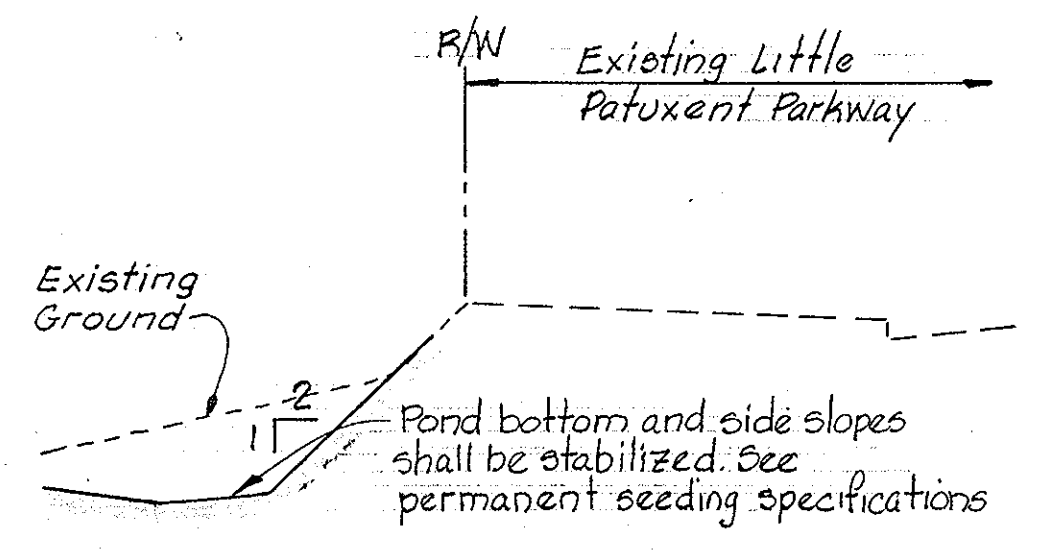
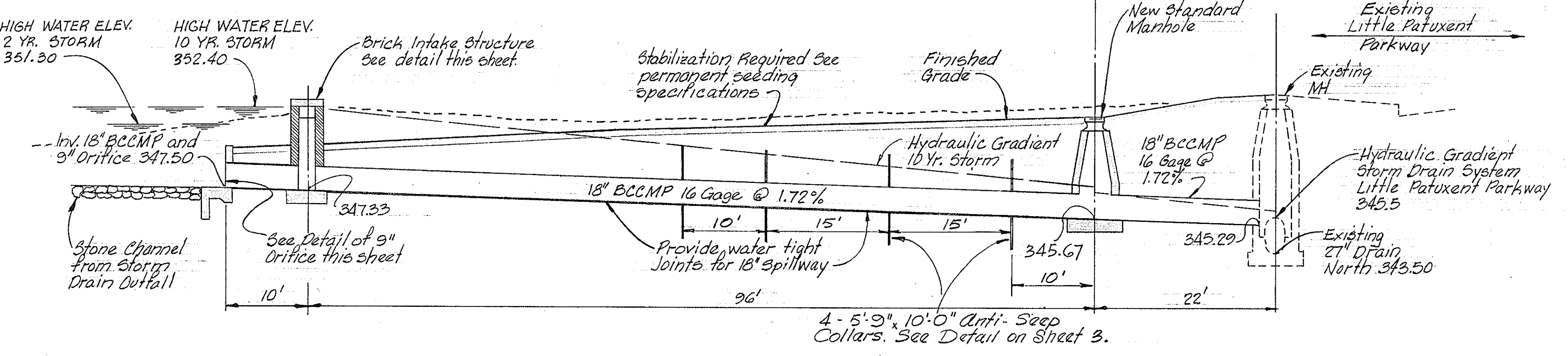
Winstead Bumbette 7/2/78
 U.S. SOIL CONSERVATION Date DISTRICT

TEMPORARY DEWATERING PIPE
 Scale: 3/4"=1'-0"

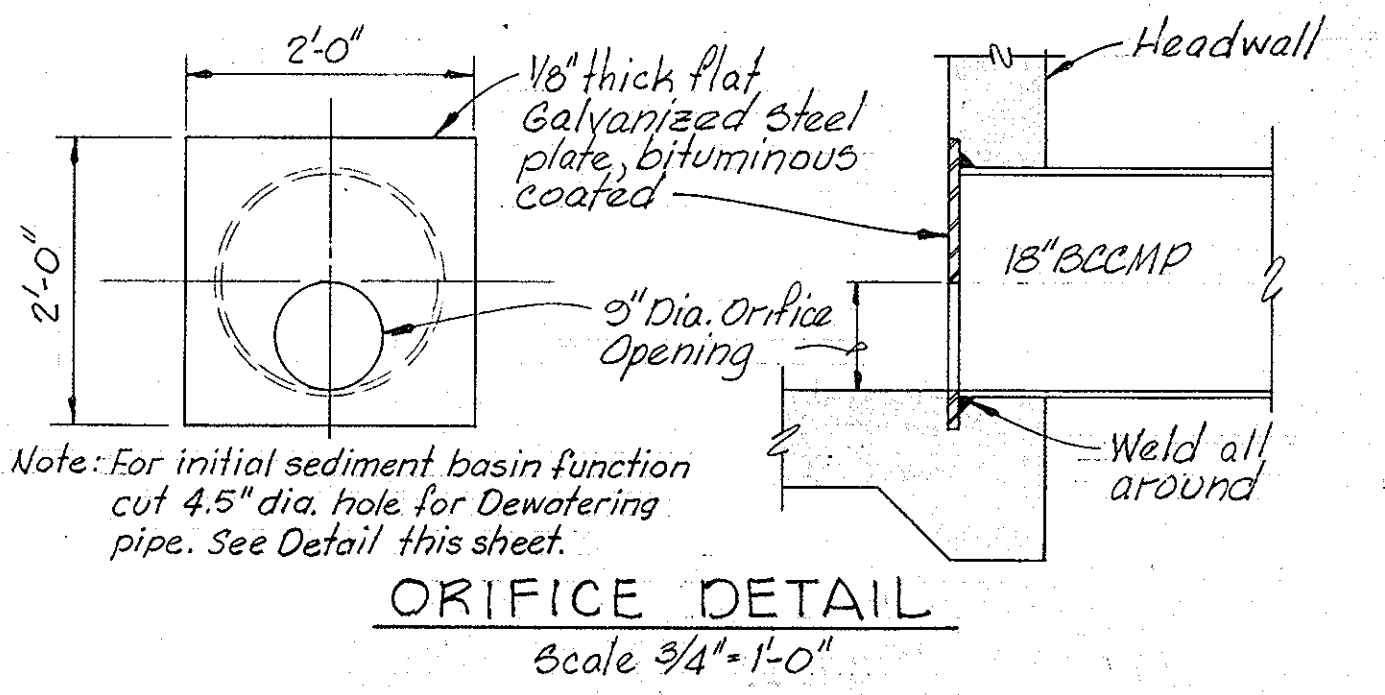
APPROVED: *Robert J. Johnson* 9-27-78
 HOWARD S.C.D. Date

PLAN NUMBER

NOTE: An 18" pipe exists between the existing manhole and the existing inlet in the S.W.M. Pond. This pipe must be located and portions removed prior to construction of the 18" BCCMP spillway.



NOTES:
 1. Galvanized rods shall be 1/2" dia. and threaded 9" at both ends. 72" long
 2. The coupling band shall have sufficient length to give a minimum 3" band lap.
 3. The coupling band shall be 16 gage.
 4. Rivets in the longitudinal seam under the collar to be omitted and seam strip welded.
 5. The coupling band shall be asphalt coated - Type A
 6. Field application of asphalt base shall be cement coated with asbestos fibers (roof cement) applied at lap of the coupling bands.



NO.	DATE	DESCRIPTION OF REVISIONS
1	9/13/78	As per Planning comments
2	8/28/78	As per Planning and DPW Comments

COLUMBIA SITE PLANS
 FOR TOWN CENTER SECTION 2 AREA 4 PARCEL "A"
 STORM WATER MANAGEMENT DETAILS
 SHEET 5 OF 8
 ELECTION DISTRICT NO. 5, HOWARD COUNTY, MARYLAND
 DATE: August 18, 1978
 SCALE: AS SHOWN

WHITMAN, REQUARDT & ASSOCIATES APPROVED
 ENGINEERS
 1304 ST. PAUL STREET
 BALTIMORE, MARYLAND 21202
Kenneth A. McCord
 Kenneth A. McCord P.E. No. 1974
 PLANNING BOARD OF HOWARD COUNTY
 DATE: 8-30-78

APPROVED FOR PUBLIC WATER AND PUBLIC SEWERAGE SYSTEMS, HOWARD COUNTY HEALTH DEPARTMENT
James W. Boyd 10-9-78
 HEALTH OFFICER DATE

APPROVED: HOWARD COUNTY OFFICE OF PLANNING AND ZONING
Donald L. Harris 10-10-78
 PLANNING DIRECTOR DATE
William W. Murchison 10-10-78
 CHIEF DIVISION OF LAND DEVELOPMENT DATE

APPROVED FOR PUBLIC WATER, PUBLIC SEWER AND STORM DRAINAGE SYSTEMS AND ROADS, HOWARD COUNTY DEPARTMENT OF PUBLIC WORKS
Robert E. Brudenbury 10/5/78
 DIRECTOR DATE
W. O. Salbeck 10-5-78
 CHIEF, BUREAU OF ENGINEERING DATE

CERTIFICATION BY THE DEVELOPER

"I certify that the construction of this pond will be done according to this plan. I also authorize periodic on-site inspection by the Howard Soil Conservation District or their authorized agents as are deemed necessary. Deviation from this plan will not be made unless authorized by the Howard Soil Conservation District. I will supply the Howard Soil Conservation District Office with an as-built plan of this pond within 30 days of the ponds completion."

Frederick W. Glassberg 7/19/78
 Date
 Frederick W. Glassberg

CERTIFICATION BY THE ENGINEER

"I certify that this plan for small pond construction represents a practical and workable plan based on my personal knowledge of the site conditions and that it was prepared in accordance with the requirements of the Howard Soil Conservation District."

Kenneth A. McCord
 Kenneth A. McCord P.E. 1974 Date

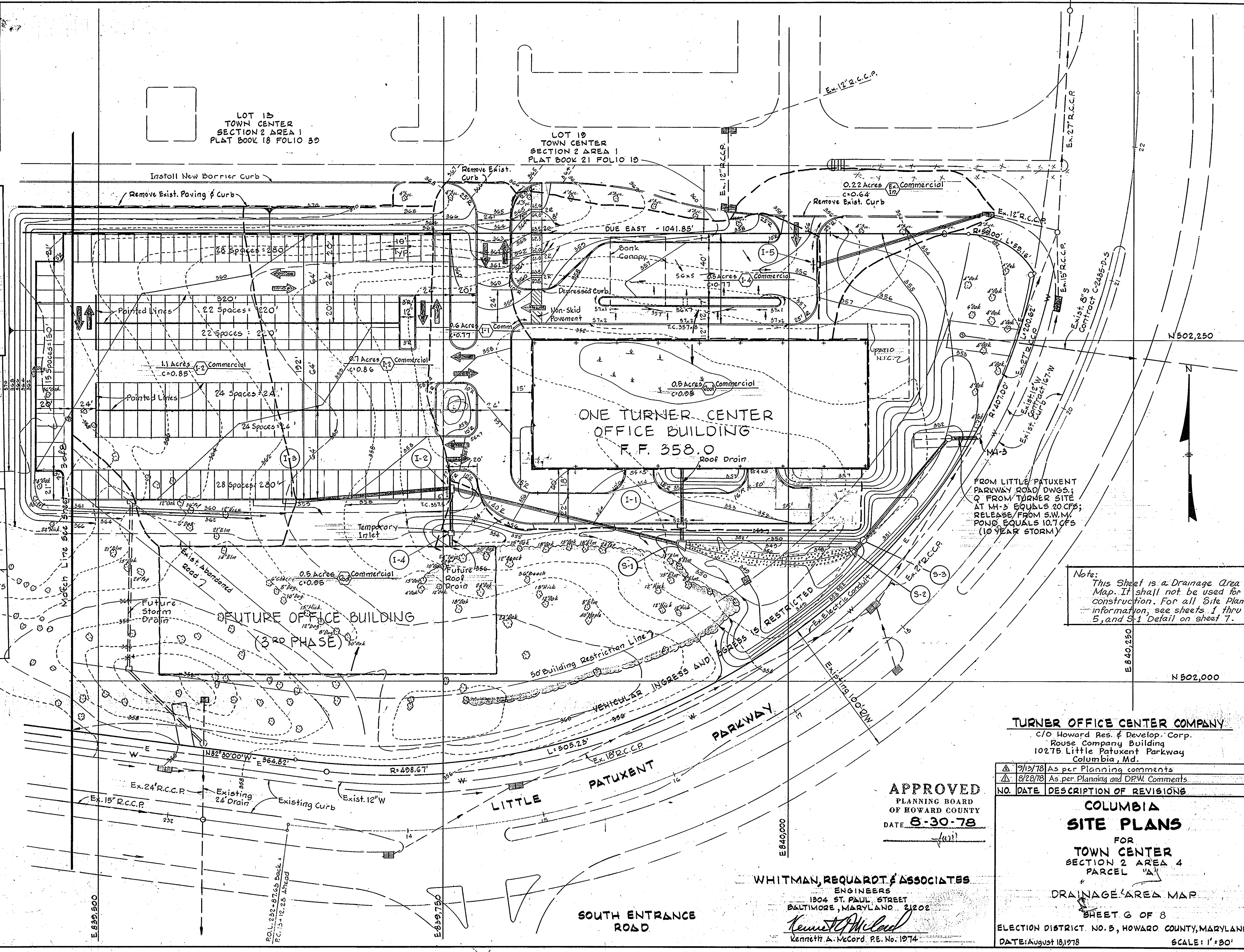
THIS PLAN HAS BEEN REVIEWED BY THE HOWARD SOIL CONSERVATION DISTRICT AND MEETS THE TECHNICAL REQUIREMENTS FOR SMALL POND CONSTRUCTION

William B. Binkley 9-28-78
 U.S. SOIL CONSERVATION DISTRICT Date

THIS PLAN FOR SMALL POND CONSTRUCTION MEETS THE REQUIREMENTS OF THE HOWARD SOIL CONSERVATION DISTRICT.

APPROVED: *Robert W. Zilman* 9-28-78
 HOWARD S.D. Date

PLAN NUMBER



Note: This Sheet is a Drainage Area Map. It shall not be used for construction. For all Site Plan information, see sheets 1 thru 5, and S-1 Detail on sheet 7.

TURNER OFFICE CENTER COMPANY
 c/o Howard Res. & Develop. Corp.
 Rouse Company Building
 10275 Little Patuxent Parkway
 Columbia, Md.

APPROVED
 PLANNING BOARD
 OF HOWARD COUNTY
 DATE 8-30-78

WHITMAN, REQUARDT & ASSOCIATES
 ENGINEERS
 1304 ST. PAUL STREET
 BALTIMORE, MARYLAND 21202
Kenneth A. McCord
 Kenneth A. McCord P.E. No. 1974

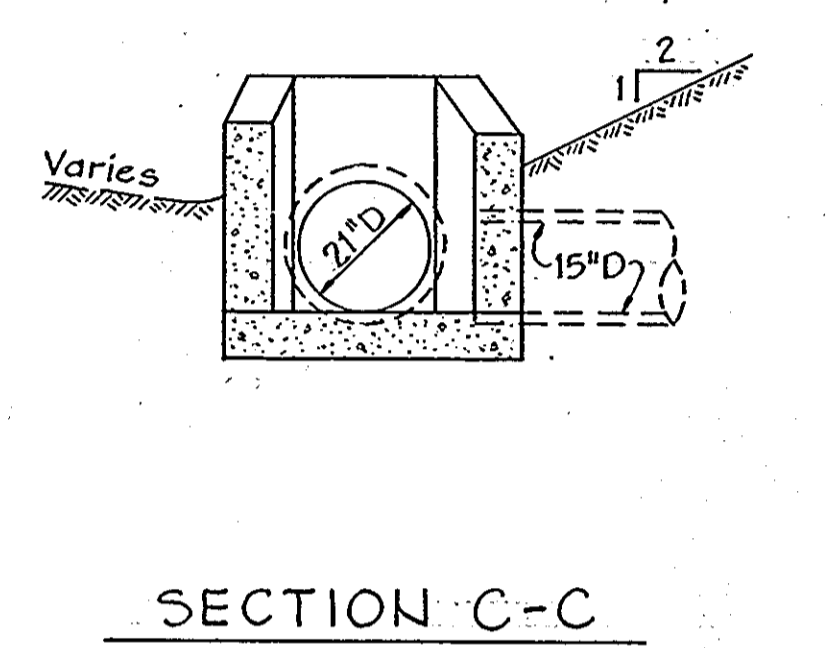
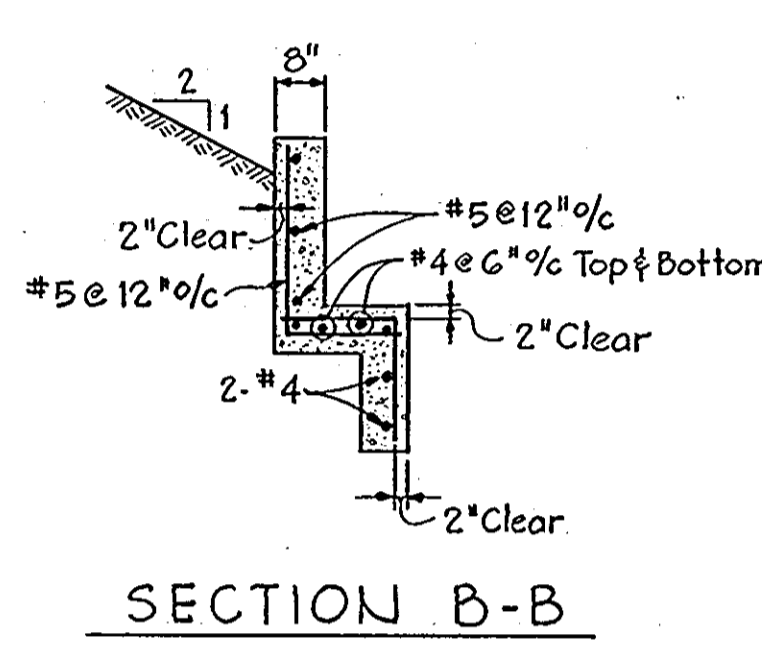
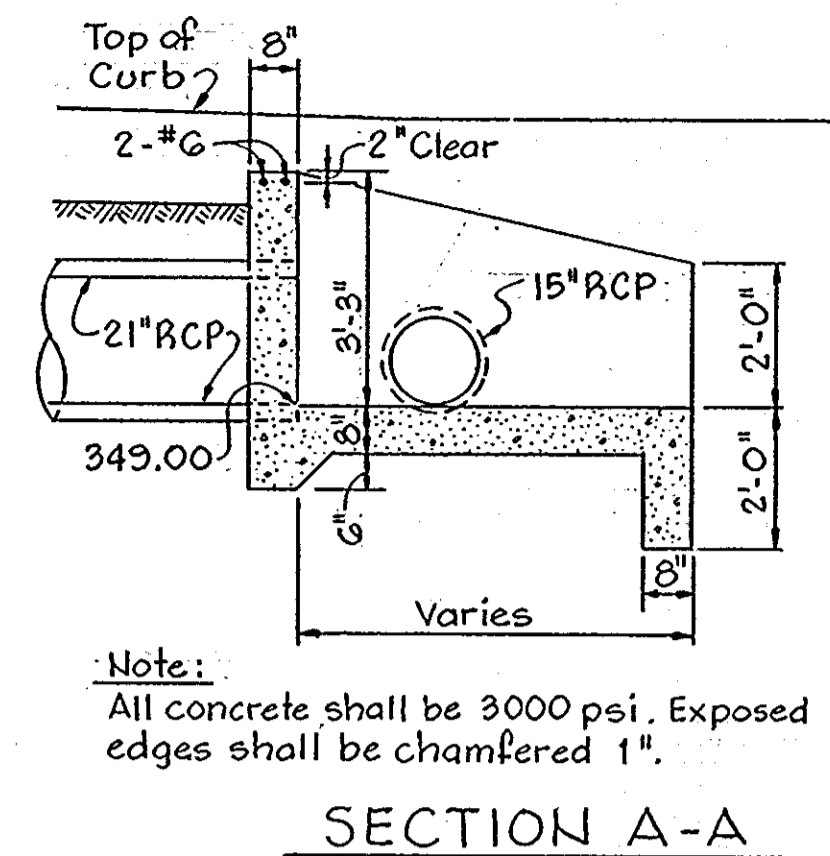
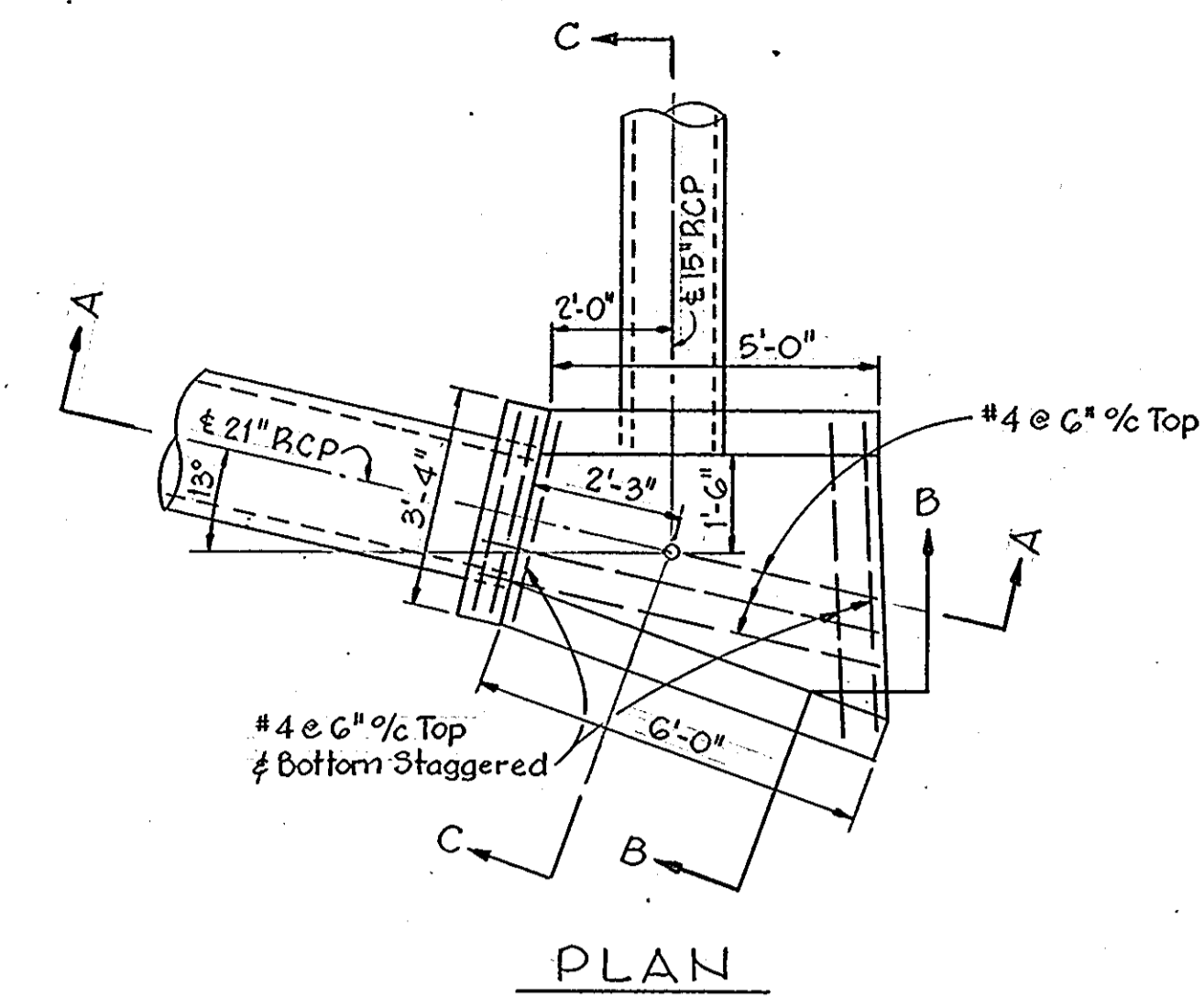
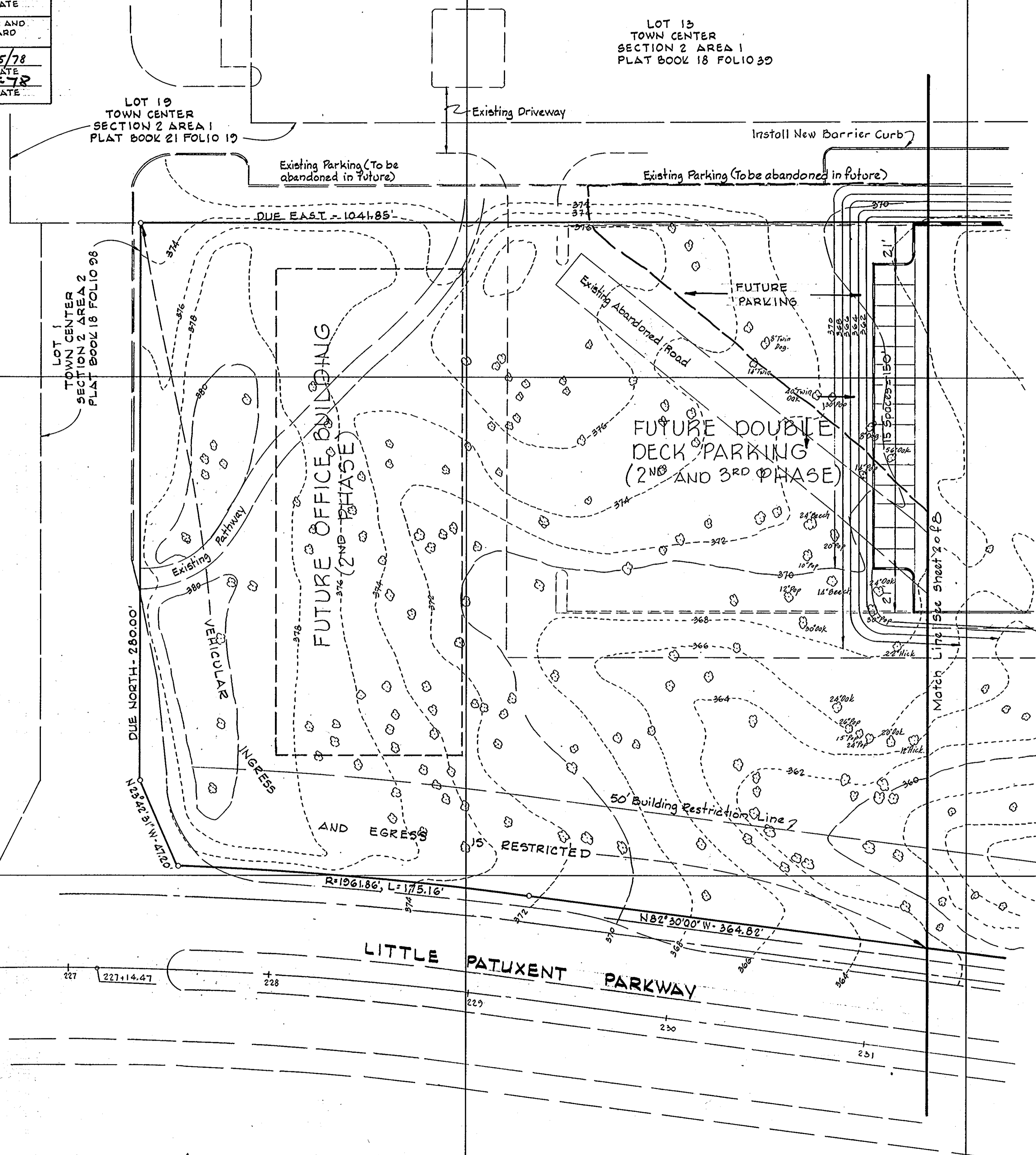
NO.	DATE	DESCRIPTION OF REVISIONS
1	7/13/78	As per Planning comments
2	8/28/78	As per Planning and DRW. Comments

COLUMBIA SITE PLANS
 FOR
 TOWN CENTER
 SECTION 2 AREA 4
 PARCEL "A"
 DRAINAGE AREA MAP
 SHEET G OF 8
 ELECTION DISTRICT NO. 5, HOWARD COUNTY, MARYLAND
 DATE: August 18, 1978
 SCALE: 1" = 80'
 SDP-79-10c

APPROVED FOR PUBLIC WATER AND PUBLIC SEWERAGE SYSTEMS, HOWARD COUNTY HEALTH DEPARTMENT
 COUNTY HEALTH OFFICER *John M. ...* 10-9-78 DATE

APPROVED: HOWARD COUNTY OFFICE OF PLANNING AND ZONING
 PLANNING DIRECTOR *Thomas J. ...* 10-10-78 DATE
 CHIEF DIVISION OF LAND DEVELOPMENT *John M. ...* 10-10-78 DATE

APPROVED FOR PUBLIC WATER, PUBLIC SEWER AND STORM DRAINAGE SYSTEMS AND ROADS, HOWARD COUNTY DEPARTMENT OF PUBLIC WORKS
 DIRECTOR *Richard E. ...* 10/5/78 DATE
 CHIEF, BUREAU OF ENGINEERING *W.O. ...* 10-5-78 DATE



OUTFALL STRUCTURE S-1
 Scale: 3/8" = 1'-0"

Note:
 Except for S-1 Detail above,
 this sheet shall not be used
 for construction.

APPROVED
 PLANNING BOARD
 OF HOWARD COUNTY
 DATE 8-30-78
[Signature]


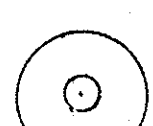

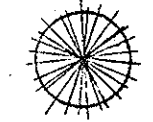
NO.	DATE	DESCRIPTION OF REVISIONS
1	9/13/78	As per Planning comments
2	8/28/78	As per Planning and DPW Comments

COLUMBIA
 SITE PLANS
 FOR
 TOWN CENTER
 SECTION 2 AREA 4
 PARCEL "A"
 DRAINAGE AREA MAP
 AND STORM DRAIN DETAILS
 SHEET 7 OF 8
 ELECTION DISTRICT NO. 5, HOWARD COUNTY, MARYLAND
 DATE: August 18, 1978 SCALE: AS SHOWN




WHITMAN, REQUARDT & ASSOCIATES
 ENGINEERS
 1304 ST. PAUL STREET
 BALTIMORE, MARYLAND 21202
Kenneth A. McCord
 Kenneth A. McCord P.E. No. 1974

TURNER OFFICE CENTER COMPANY
 C/O Howard Res. & Develop. Corp.
 Rouse Company Building
 10275 Little Patuxent Parkway
 Columbia, Md.

LEGEND

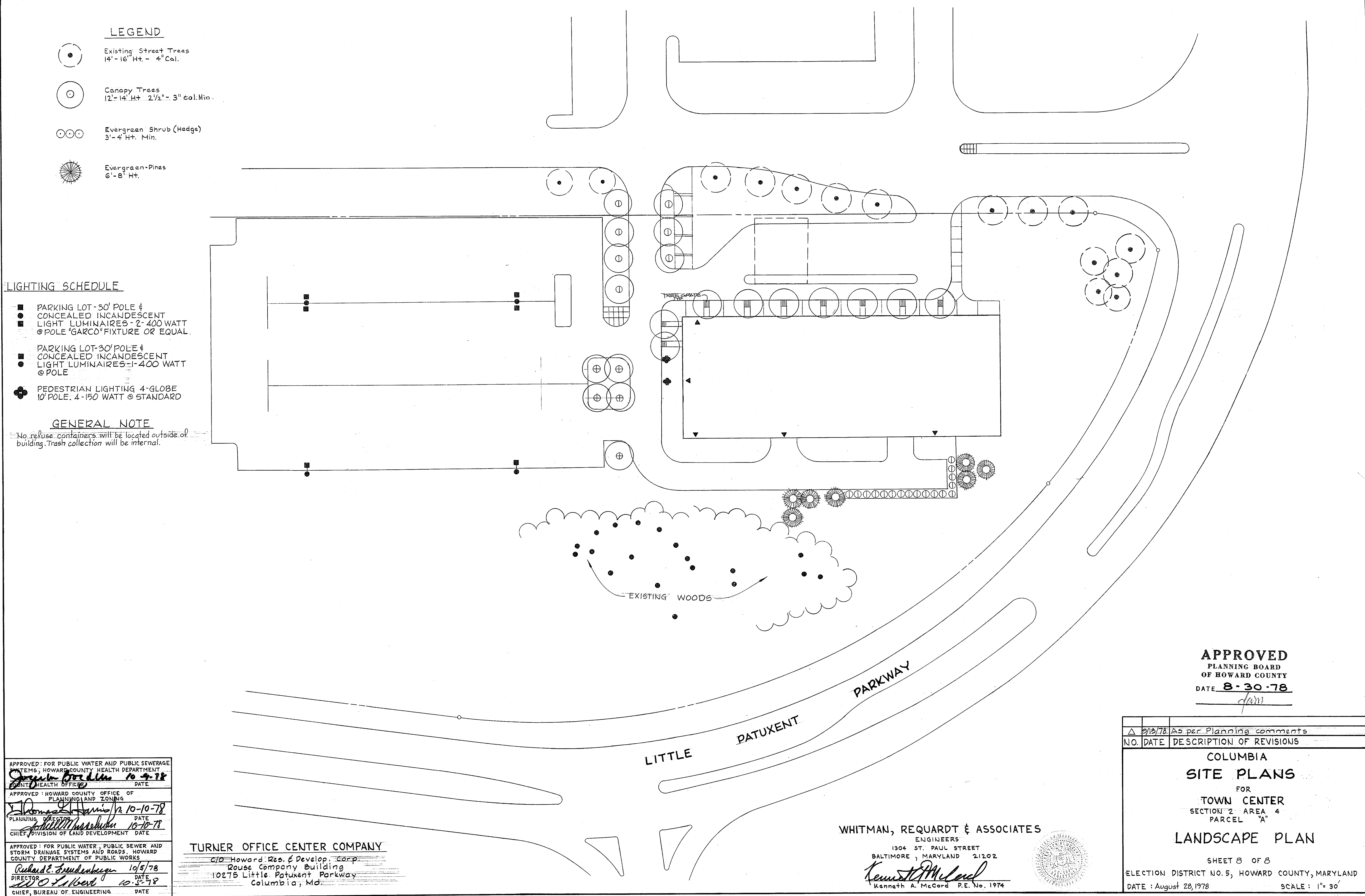
-  Existing Street Trees
14'-16' Ht. - 4" Cal.
-  Canopy Trees
12'-14' Ht. 2 1/2" - 3" cal. Min.
-  Evergreen Shrub (Hedge)
3'-4' Ht. Min.
-  Evergreen-Pines
6'-8' Ht.

LIGHTING SCHEDULE

-  PARKING LOT-30' POLE & CONCEALED INCANDESCENT LIGHT LUMINAIRES-2-400 WATT @ POLE "GARCO" FIXTURE OR EQUAL.
-  PARKING LOT-30' POLE & CONCEALED INCANDESCENT LIGHT LUMINAIRES-1-400 WATT @ POLE
-  PEDESTRIAN LIGHTING 4-GLOBE 10' POLE. 4-150 WATT @ STANDARD

GENERAL NOTE

No refuse containers will be located outside of building. Trash collection will be internal.



APPROVED
PLANNING BOARD
OF HOWARD COUNTY
DATE **8-30-78**

flam

NO.	DATE	DESCRIPTION OF REVISIONS
Δ	8/13/78	As per Planning comments

**COLUMBIA
SITE PLANS
FOR
TOWN CENTER
SECTION 2 AREA 4
PARCEL "A"
LANDSCAPE PLAN**

SHEET 8 OF 8

ELECTION DISTRICT NO. 5, HOWARD COUNTY, MARYLAND
DATE: August 28, 1978 SCALE: 1" = 30'

APPROVED: FOR PUBLIC WATER AND PUBLIC SEWERAGE SYSTEMS; HOWARD COUNTY HEALTH DEPARTMENT
Joseph Brubaker 10-9-78
COUNTY HEALTH OFFICER DATE

APPROVED: HOWARD COUNTY OFFICE OF PLANNING AND ZONING
Thomas Harris 10-10-78
PLANNING DIRECTOR DATE

Phillip Hershman 10-10-78
CHIEF, DIVISION OF LAND DEVELOPMENT DATE

APPROVED: FOR PUBLIC WATER, PUBLIC SEWER AND STORM DRAINAGE SYSTEMS AND ROADS, HOWARD COUNTY DEPARTMENT OF PUBLIC WORKS
Richard E. Sreudenberg 10/5/78
DIRECTOR DATE

W O Lambert 10-5-78
CHIEF, BUREAU OF ENGINEERING DATE

TURNER OFFICE CENTER COMPANY
610 Howard Res. & Develop. Corp.
Rouse Company Building
10275 Little Patuxent Parkway
Columbia, Md.

WHITMAN, REQUARDT & ASSOCIATES
ENGINEERS

1304 ST. PAUL STREET
BALTIMORE, MARYLAND 21202

Kenneth A. McCord
Kenneth A. McCord P.E. No. 1974

