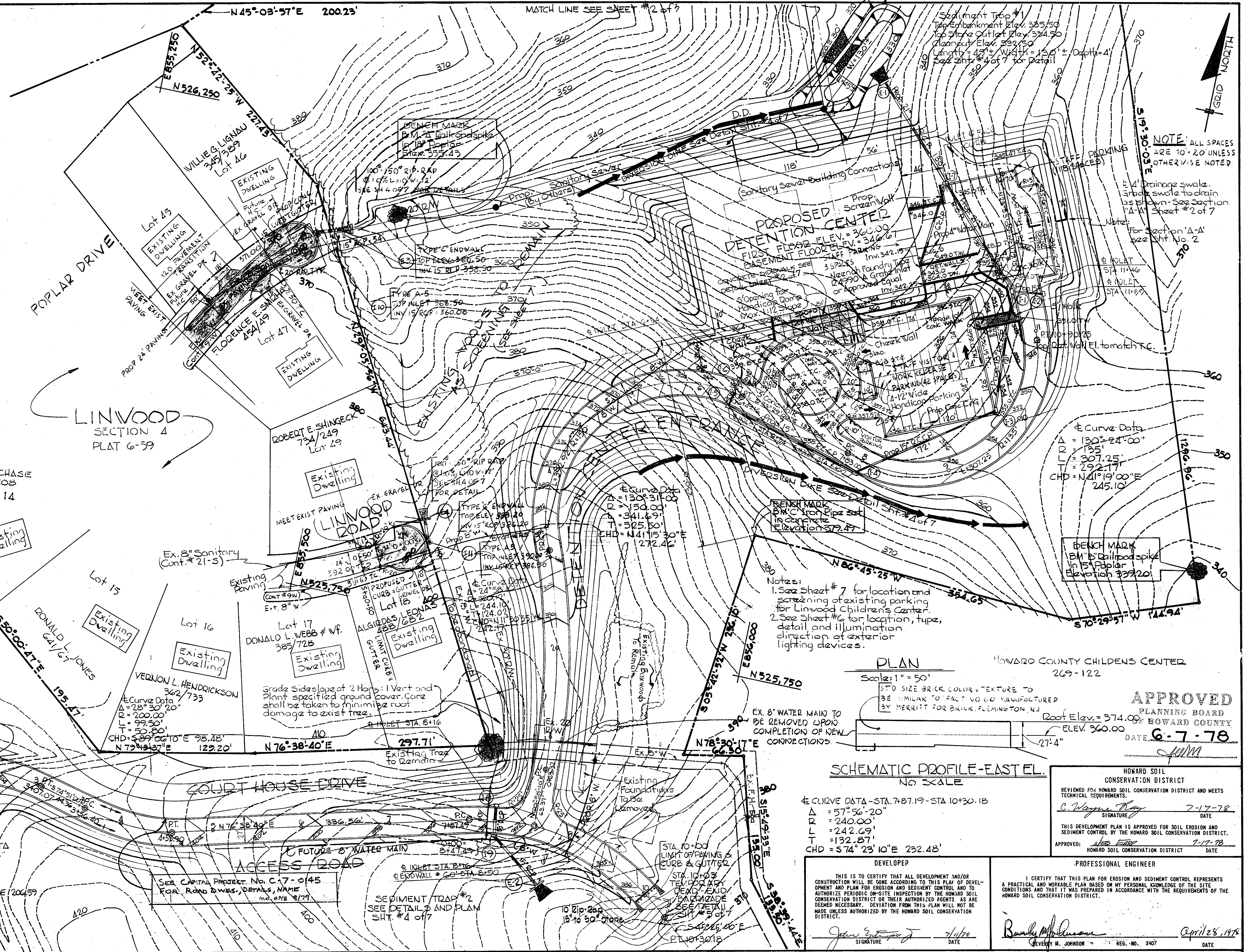


VICINITY MAP
SCALE: 1" = 600'



PLAN
Scale: 1" = 50'

STANDARD SIZE BRICK, COLOR & TEXTURE TO BE SIMILAR TO FACT NO. 60 MANUFACTURED BY MERRITT FOR BRICK, FLEMINGTON, NJ

Roof Elev. = 374.00'
ELEV. 360.00'

DATE: 6-7-78

APPROVED PLANNING BOARD
HOWARD COUNTY

SCHMATIC PROFILE - EAST EL.
NO SCALE

Curve Data - STA. 7+87.19 - STA. 10+30.18

Δ	= 57°56'-20"
R	= 240.00'
L	= 242.69'
T	= 132.87'
CHD	= 574' 23" 10"E 232.48'

HOWARD SOIL CONSERVATION DISTRICT

REVIEWED FOR HOWARD SOIL CONSERVATION DISTRICT AND MEETS TECHNICAL REQUIREMENTS.

C. Wayne Ray 7-17-78
SIGNATURE DATE

THIS DEVELOPMENT PLAN IS APPROVED FOR SOIL EROSION AND SEDIMENT CONTROL BY THE HOWARD SOIL CONSERVATION DISTRICT.

APPROVED: *Wesley E. Fisher* 7-17-78
HOWARD SOIL CONSERVATION DISTRICT DATE

DEVELOPER

THIS IS TO CERTIFY THAT ALL DEVELOPMENT AND/OR CONSTRUCTION WILL BE DONE ACCORDING TO THIS PLAN OF DEVELOPMENT AND PLAN FOR EROSION AND SEDIMENT CONTROL AND TO AUTHORIZE PERIODIC ON-SITE INSPECTION BY THE HOWARD SOIL CONSERVATION DISTRICT OR THEIR AUTHORIZED AGENTS AS ARE DEEMED NECESSARY. DEVIATION FROM THIS PLAN WILL NOT BE MADE UNLESS AUTHORIZED BY THE HOWARD SOIL CONSERVATION DISTRICT.

John E. [Signature] 7/17/78
SIGNATURE DATE

PROFESSIONAL ENGINEER

I CERTIFY THAT THIS PLAN FOR EROSION AND SEDIMENT CONTROL REPRESENTS A PRACTICAL AND WORKABLE PLAN BASED ON MY PERSONAL KNOWLEDGE OF THE SITE CONDITIONS AND THAT IT WAS PREPARED IN ACCORDANCE WITH THE REQUIREMENTS OF THE HOWARD SOIL CONSERVATION DISTRICT.

Beverly H. Johnson April 28, 1978
SIGNATURE DATE

BEVERLY H. JOHNSON REG. NO. 3407

APPROVED: FOR PUBLIC WATER, PUBLIC SEWERAGE, STORM DRAINAGE SYSTEMS AND ROADS, HOWARD COUNTY DEPARTMENT OF PUBLIC WORKS.

Richard E. [Signature] 7/25/78
DIRECTOR DATE

W. O. [Signature] 7-24-78
CHIEF, BUREAU OF HIGHWAYS DATE

APPROVED: HOWARD COUNTY OFFICE OF PLANNING AND ZONING

Thomas L. [Signature] 7-31-78
PLANNING DIRECTOR DATE

[Signature] 7-31-78
CHIEF, DIVISION OF LAND DEVELOPMENT DATE

APPROVED: FOR PUBLIC WATER AND PUBLIC SEWERAGE SYSTEMS, HOWARD COUNTY HEALTH DEPARTMENT.

Joseph [Signature] 7-22-78
COUNTY HEALTH OFFICER DATE

BEVERLY H. JOHNSON
REG. NO. 3407

PURDUM & JESCHKE
CONSULTING ENGINEERS
LAND SURVEYORS

1023 North Calvert Street
Baltimore, Maryland 21202 301/837-0194

ARCHITECT:

MEYERS, D'ALEO & PATTON INC.
PRINDLE, PATRICK & PARTNERS

SUITE 1200 - 1 NORTH CHARLES STREET
BALTIMORE, MARYLAND 21201

MECHANICAL-ELECTRICAL ENGINEERS

HENRY ADAMS INC.

SUITE 1200 - EQUITABLE BLDG.
401 WASHINGTON AVENUE
TOWSON, MARYLAND 21204

HOWARD COUNTY DEPARTMENT OF PUBLIC WORKS
PROJECT C-5-0123

HOWARD COUNTY DETENTION CENTER
SITE PLAN

ELLCOTT CITY
2ND ELECTION DISTRICT

MARYLAND

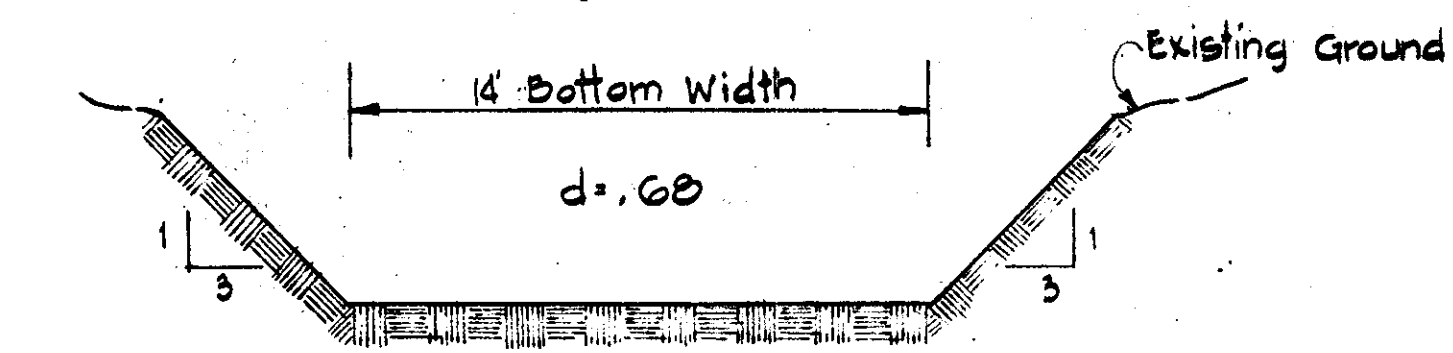
SHEET 1 OF 7

Designed By: RT
Drawn By: JFT
Checked By: RBC

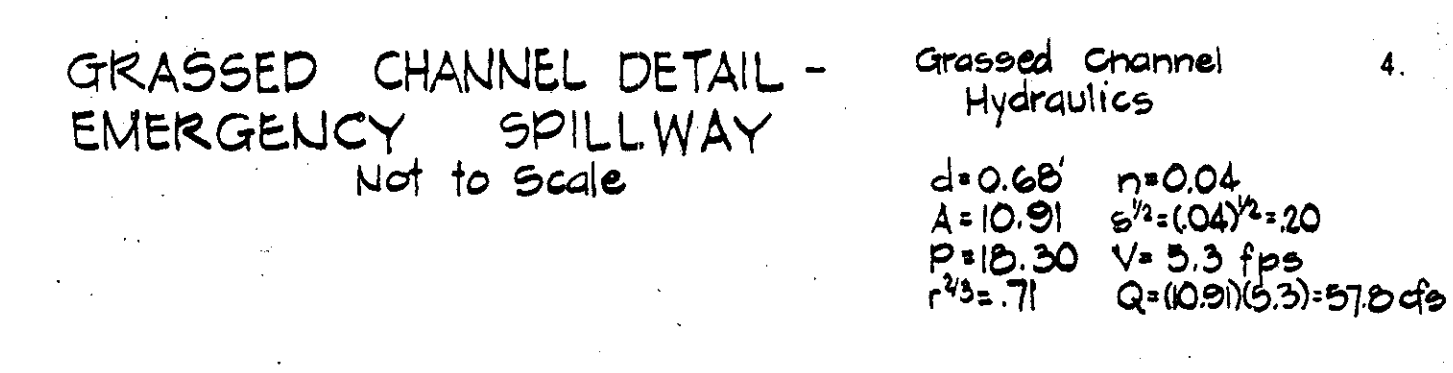
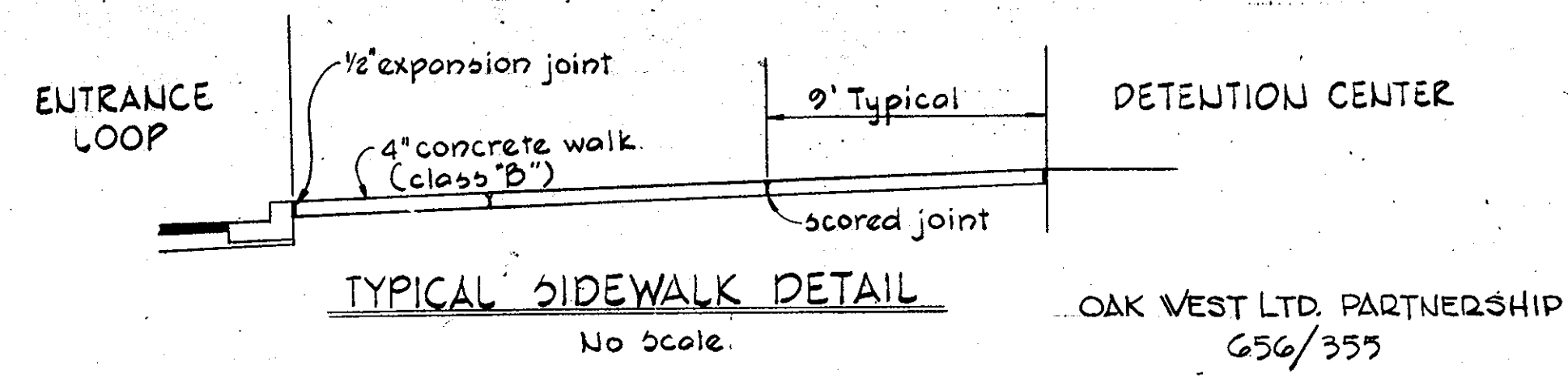
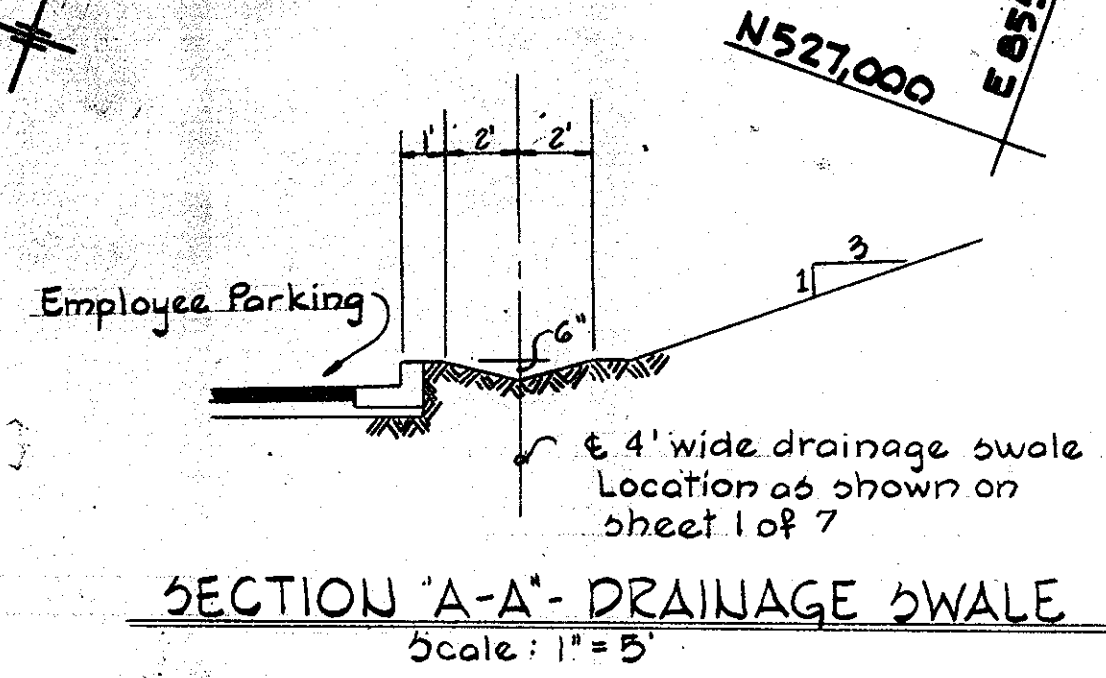
STORMWATER MANAGEMENT DETENTION POND - DESIGN INFORMATION

YEAR	RCN		RAINFALL			RUNOFF DEPTH			STORAGE		RELEASE RATE	
	CHOSR	DEV	DEPTH	UNDEV.	DEV.	REQUIRED	ACTUAL	MAX. ALLOW.	ACTUAL	C.F.S.	C.F.S.	
	(INCHES)	(INCHES)	(INCHES)	(INCHES)	(INCHES)	(Ft ³)	(Ft ³)	C.F.S.	C.F.S.			
2 Year	67	77	9.2	0.70	1.21	18,604	19,100	9.7	9.6			
10 Year	67	77	5.1	1.88	2.70	57,989	58,000	26.2	29.8			

Note: Score the concrete walk at 9 foot intervals in a square pattern as shown on sheet #1. The interval shall be 5 feet where not shown. Provide expansion joints every 45 feet.

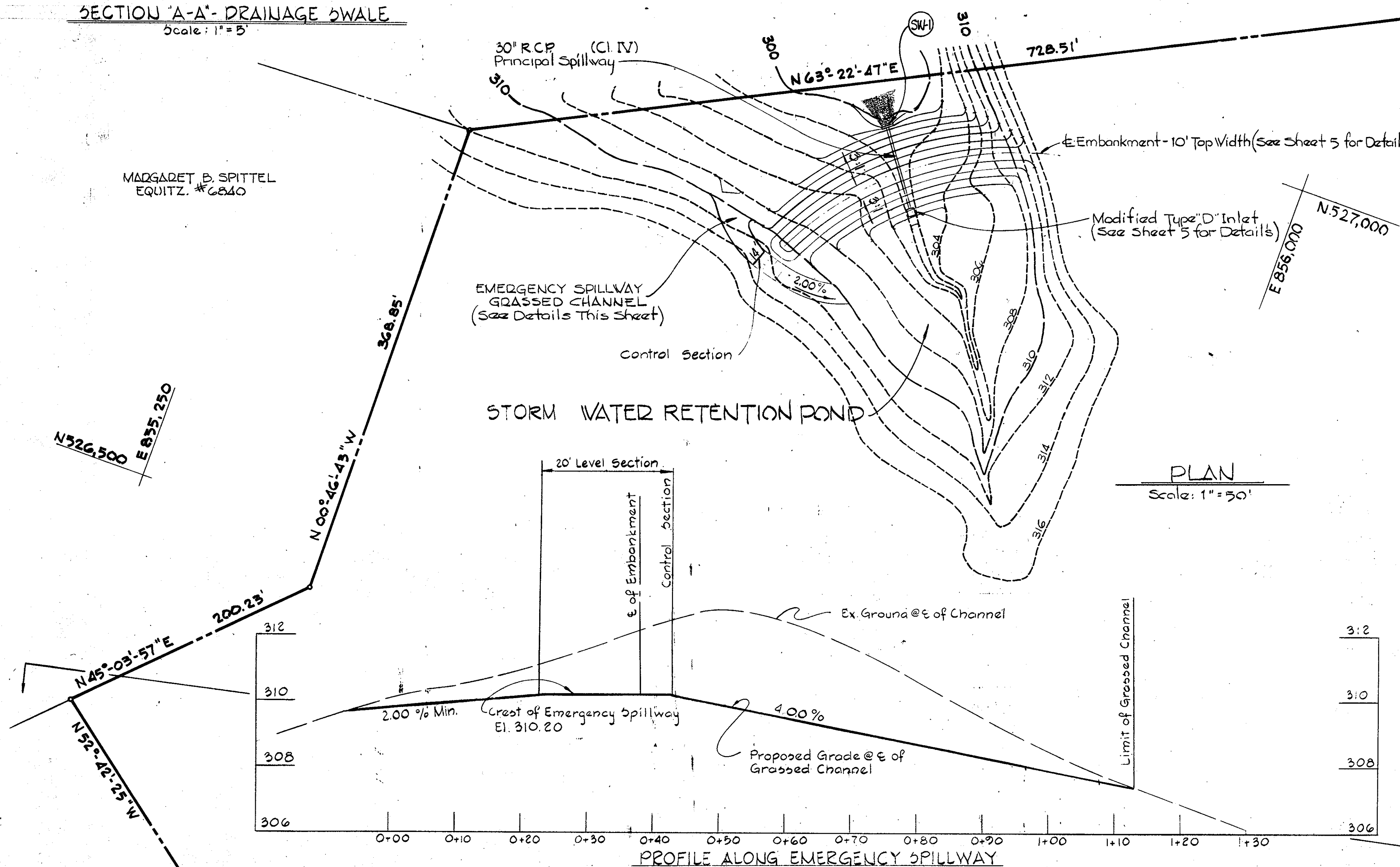


- SEDIMENT CONTROL NOTES**
- The developer shall notify the Ho. Co. Office of Inspections and Permits at least 24 hours prior to beginning any construction shown hereon. (465-5000 Ext. 365)
 - Dikes, sediment traps, etc., to be constructed prior to any onsite grading or disturbance to any existing surface material, and are to be stabilized as soon as constructed.
 - All sediment control structures to remain in-place until permission for their removal has been obtained from the Ho. Co. Office of Inspections and Permits. (465-5000 Ext. 365)
 - All graded areas not to be sodded shall be stabilized by seeding and mulching in accordance with the following:
 - Site Preparation:
 - Narrow or disc in areas proposed to be seeded with the following materials at the specified rate, to a depth of 3"
 - Pulverized limestone at 1 1/2 tons/acre
 - Commercial fertilizer 10-10-10 at 1/2 tons/acre
 - Super phosphate of 600 lbs./acre
 - Seeding:
 - Sow the following seed mixture at the rate of 200 lbs./acre with a mechanical spreader:
 - Temporary: Italian or Perennial Rye Grass
 - Permanent: 40% Marion Blue Grass, 40% South Dakota Blue Grass, & 20% Penn Lawn Creeping Red Fescue
 - The seeded area shall then be raked with a York Rake (minimum of 2 passes) covered and compacted with Cultipacker or other approved method.
 - Mulching:
 - Seeded areas shall be uniformly mulched immediately after seeding with unweathered small grain straw at the rate of 1 1/2 to 2 tons/acre.
 - Tie mulch down with liquid asphalt at 0.1 gal. s.y. or emulsified asphalt at 0.04 gal./s.y. on mulch netting.
 - Sodding:
 - Apply 10-10-10 Fertilizer @ 1000 lbs./acre (25 lbs./1000)
 - Apply Ground Agricultural Limestone @ 2000 lbs./acre (50 lbs./1000)
 - Incorporate both lime and fertilizer into soil by discing. Firm up after incorporation.
 - Lay sod to a tight fit. Roll to ensure contact with underlying soil. Water as necessary for first two weeks (in summer) to ensure establishment.
 - Critical area (2:1 slope) stabilization shall be Kentucky 31 Fescue (certified) @ 40#/acre and Crownvetch scarified and inoculated @ 15#/acre.



Grassed Channel Hydraulics

d = 0.60' n = 0.04
 A = 10.91' e² = (0.04)² = 0.0016
 P = 12.30' V = 5.3 fps
 r^{2/3} = .71 Q = (10.91)(5.3) = 57.8 cfs



SITE ANALYSIS

- Total Area of Site: 45.3 Ac.±
- Total Area Disturbed: 9.82 Ac.±
- Total Area Paved: 2.23 Ac.±
- Parking Analysis:

SHIFTS	Day (8-4)	Even. (4-12)	Night (12-8)
Correctional	9	8	7
Administrative	10	10 (til 5PM)	0
Cooks Maintenance	2	2 (til 5PM)	1
TOTAL	21	21	8

Each shift overlaps preceding by up to one hour. Worst overlap (9+10+2) + 8 = 29 Cars

B. Work Release:
50% of work release force = .5 x 16..... 8 Cars

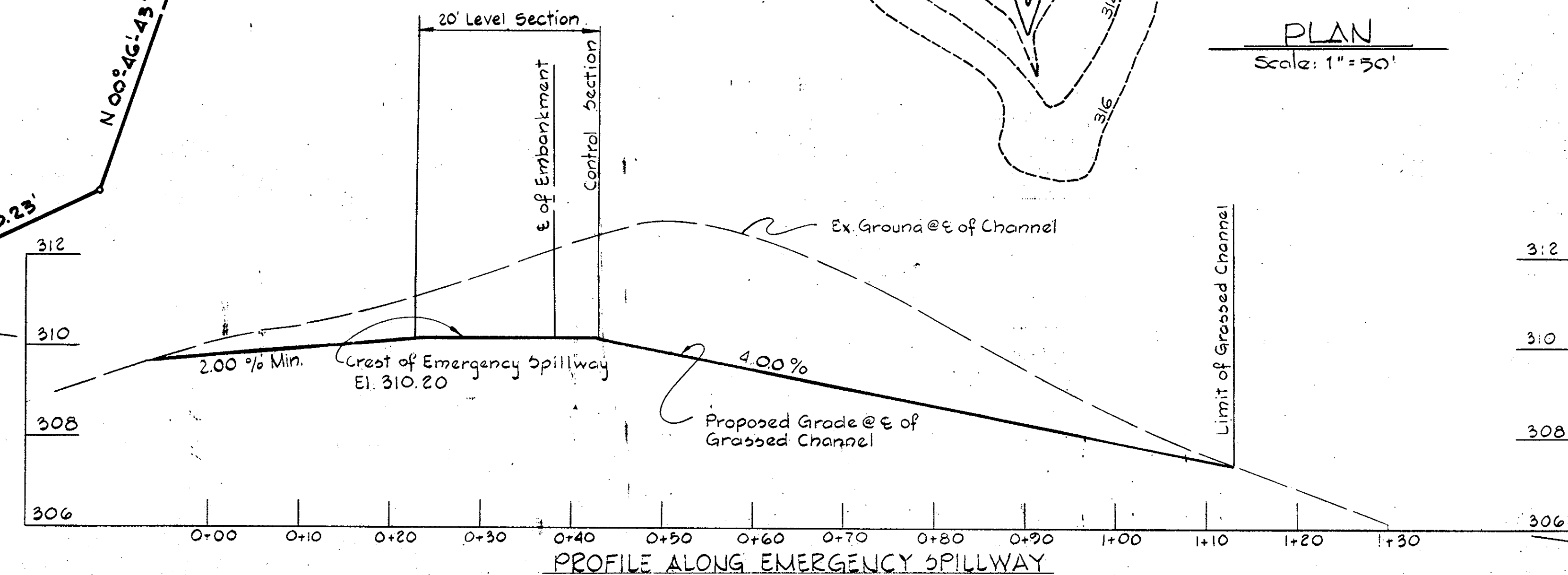
C. Visitors, Law Enforcement, Professional, Maintenance
Total typical weekday (8AM - 8 PM) = 30 Visitors etc.
Anticipated Peak Load..... 8 Cars
Weekend administrative parking (10) is available for visitors.

D. TOTAL PARKING REQUIRED: TOTAL PARKING PROVIDED:

Staff.....	29	Including 4 handicapped
Work.....	8	
Visitor etc.	8	
Transportation	2	
TOTAL	47	63

- Present Zoning: R-20
- Total Floor Space: 46,371 S.F.
- Grade Level: 31,902 S.F.
- Basement Level: 14,459 S.F.
- Owner: Howard County Maryland
- Deed Reference: Liber 728 Folio 635
- Maximum Number of Inmates = 108
- Normal Number of Inmates = 108

- CONSTRUCTION SEQUENCE**
- Obtain grading permit.
 - Construct temporary stabilized entrance.
 - Place straw bale dikes as shown on plans.
 - Construct silt fence and diversion dikes and excavate Sediment Traps to the dimensions shown on the plans.
 - Stabilize diversion dikes using "Temporary Seeding". See Sediment Control Notes.
 - Clear and rough grade Court House Drive Access Roads and Detention Center Entrance. Excess excavated material satisfactory for controlled fill shall be placed in the Detention Center and Visitor's Parking areas as directed.
 - Place controlled fill for building and parking areas, place footings, and begin building construction.
 - Construct storm drains and outlet protection apron.
 - Place roads to subgrade and lay crusher run base course of pavement.
 - Construct concrete curb and gutter pavement.
 - Final grade slopes and sodded channels.
 - Construct sidewalks.
 - Stabilize site with permanent seeding and mulching. See Sediment Control Notes.
 - Place bituminous base and surface courses of pavement.
 - Construct modified "D" inlet for storm water management and barricade temporarily.
 - Remove temporary sediment control devices, shape up storage area at modified "D" inlet and stabilize disturbed area per Sediment Control Notes.



<p>DEVELOPER</p> <p>THIS IS TO CERTIFY THAT ALL DEVELOPMENT AND/OR CONSTRUCTION WILL BE DONE ACCORDING TO THIS PLAN OF DEVELOPMENT AND PLAN FOR EROSION AND SEDIMENT CONTROL AND TO AUTHORIZE PERIODIC ON-SITE INSPECTION BY THE HOWARD SOIL CONSERVATION DISTRICT OR THEIR AUTHORIZED AGENTS, AS ARE DEEMED NECESSARY. DEVIATION FROM THIS PLAN WILL NOT BE MADE UNLESS AUTHORIZED BY THE HOWARD SOIL CONSERVATION DISTRICT.</p> <p><i>John Zepher</i> 7/1/78 SIGNATURE DATE</p>	<p>HOWARD SOIL CONSERVATION DISTRICT</p> <p>REVIEWED FOR HOWARD SOIL CONSERVATION DISTRICT AND MEETS TECHNICAL REQUIREMENTS</p> <p><i>W. Wayne Bray</i> 7-17-78 SIGNATURE DATE</p> <p>THIS DEVELOPMENT PLAN IS APPROVED FOR SOIL EROSION AND SEDIMENT CONTROL BY THE HOWARD SOIL CONSERVATION DISTRICT.</p> <p><i>Wes Egan</i> 7-17-78 APPROVED: HOWARD SOIL CONSERVATION DISTRICT DATE</p>	<p>PROFESSIONAL ENGINEER</p> <p>I CERTIFY THAT THIS PLAN FOR EROSION AND SEDIMENT CONTROL REPRESENTS A PRACTICAL AND WORKABLE PLAN BASED ON MY PERSONAL KNOWLEDGE OF THE SITE CONDITIONS AND THAT IT WAS PREPARED IN ACCORDANCE WITH THE REQUIREMENTS OF THE HOWARD SOIL CONSERVATION DISTRICT.</p> <p><i>Beverly M. Johnson</i> April 28, 78 SIGNATURE DATE</p> <p>BEVERLY M. JOHNSON REG. NO. 3407</p>
---	---	---

GENERAL NOTES

- Drawing and page numbers shown hereon are referenced to the Howard County Road Construction Code and Standard Specifications, Dated August 1968.
- The location of existing utilities shown hereon are based on the latest available information. The contractor shall however, determine the exact location before making any connections.
- The contractor shall notify "Miss Utility" at least three days prior to beginning any work shown hereon.
- All workmanship and materials shall be in accordance with the Howard County Road Construction Code and Specifications unless otherwise specified.
- Handicapped facilities to be provided.

APPROVED
PLANNING BOARD
OF HOWARD COUNTY
 DATE 6-7-78

NOTE:
 THE DEVELOPER SHALL PROVIDE THE SOIL CONSERVATION SERVICE "AS BUILT" DRAWINGS PREPARED AND SIGNED BY A CIVIL ENGINEER REGISTERED IN THE STATE OF MARYLAND WITHIN 30 DAYS FOLLOWING COMPLETION OF THE STORM WATER RETENTION STRUCTURE.

THIS PLAN FOR SMALL POND CONSTRUCTION MEETS THE REQUIREMENTS OF HOWARD SOIL CONSERVATION DISTRICT.

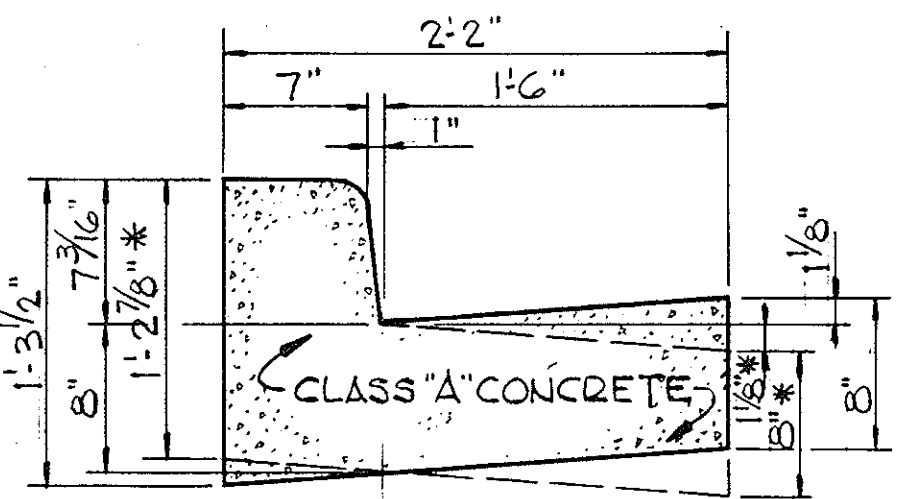
Robert Zishman 7-17-78
 DATE

THIS PLAN HAS BEEN REVIEWED FOR HOWARD SOIL CONSERVATION DISTRICT AND MEETS THE TECHNICAL REQUIREMENTS FOR SMALL POND CONSTRUCTION.

Wendell Baskette 7-17-78
 DATE

<p>APPROVED: FOR PUBLIC WATER, PUBLIC SEWERAGE, STORM DRAINAGE SYSTEMS AND ROADS. HOWARD COUNTY DEPARTMENT OF PUBLIC WORKS.</p> <p><i>Richard E. Brudenberg</i> 7/25/78 DIRECTOR DATE</p> <p><i>W.O. Libbert</i> 7-24-78 CHIEF, BUREAU OF HIGHWAYS DATE</p>	<p>APPROVED: HOWARD COUNTY OFFICE OF PLANNING AND ZONING</p> <p><i>Thomas L. Harvill</i> 7-31-78 PLANNING DIRECTOR DATE</p> <p><i>Bill W. Moore</i> 7-31-78 CHIEF, DIVISION OF LAND DEVELOPMENT DATE</p>	<p>APPROVED: FOR PUBLIC WATER AND PUBLIC SEWERAGE SYSTEMS. HOWARD COUNTY HEALTH DEPARTMENT.</p> <p><i>John B. Brown</i> 7-24-78 COUNTY HEALTH OFFICER DATE</p>	<p>PURDUM & JESCHKE CONSULTING ENGINEERS LAND SURVEYORS</p> <p>1023 North Calvert Street Baltimore, Maryland 21202 301/837-0194</p>	<p>ARCHITECT: MEYERS, D'ALEO & PATTON INC. PRINDLE, PATRICK & PARTNERS</p> <p>SUITE 1200 - 1 NORTH CHARLES STREET BALTIMORE, MARYLAND 21201</p>	<p>MECHANICAL-ELECTRICAL ENGINEERS: HENRY ADAMS INC.</p> <p>SUITE 1200 - EQUITABLE BLDG. 401 WASHINGTON AVENUE TOWSON, MARYLAND 21204</p>	<p>PROJECT C-5-0123</p> <p>HOWARD COUNTY DETENTION CENTER</p> <p>STORM WATER MANAGEMENT POND SEDIMENT CONTROL NOTES</p> <p>ELLCOTT CITY MARYLAND</p>	<p>SHEET 2 OF 7</p> <p>Designed By: RT Drawn By: JET Checked By: BBC</p>
---	--	---	--	---	--	---	--

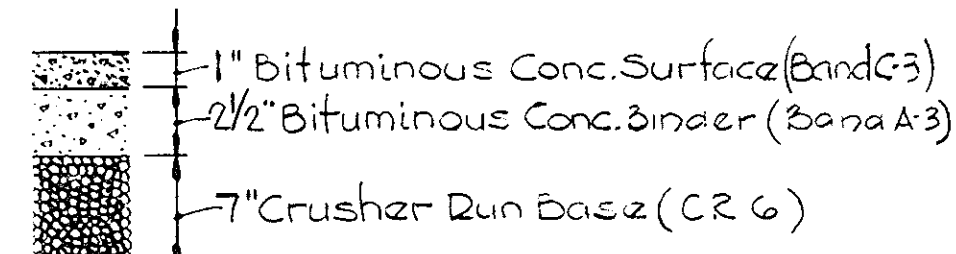
COURT HOUSE DRIVE ACCESS ROAD



Note: Dimensions marked "*" apply to section with drainage away from curb.

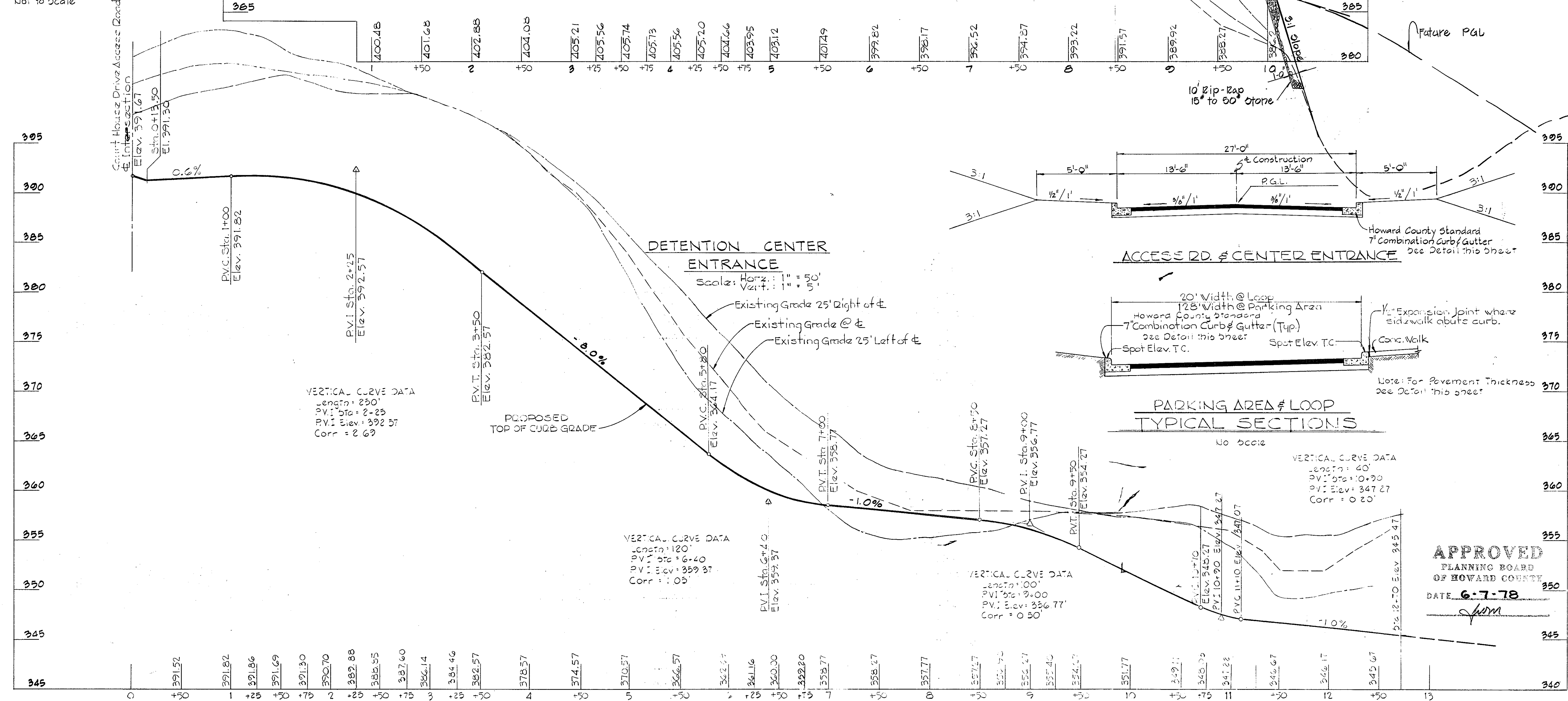
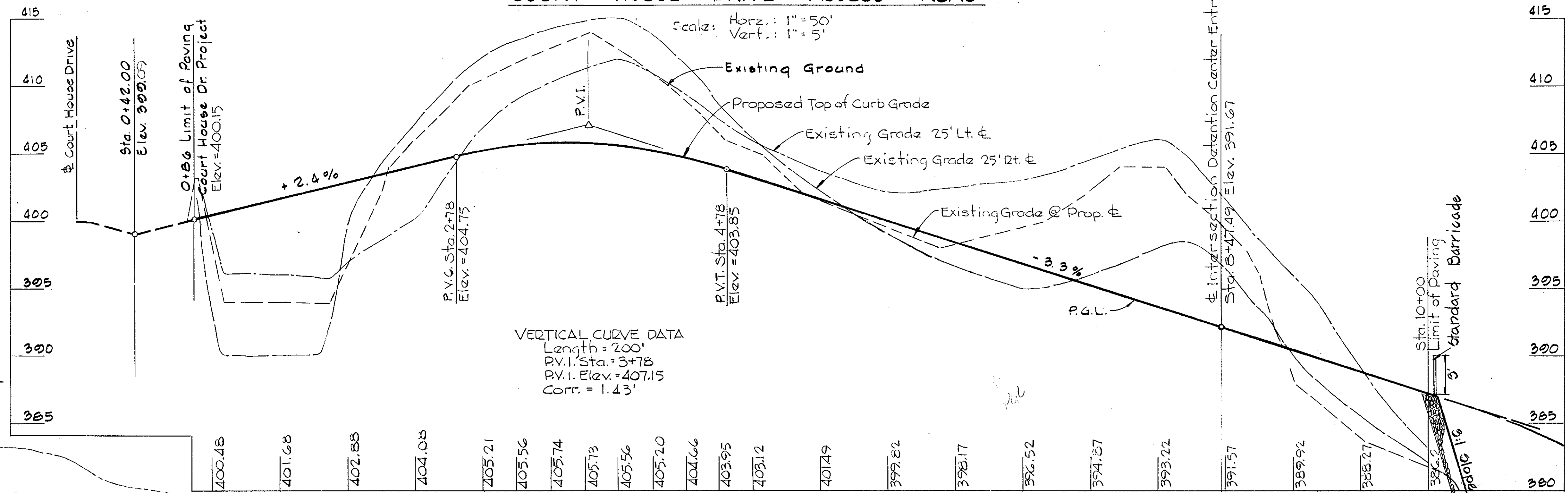
COMBINATION CURB & GUTTER

Howard County Standard Drawing D109 Pg. 16d
Not to scale



PAVEMENT DETAIL

Not to Scale

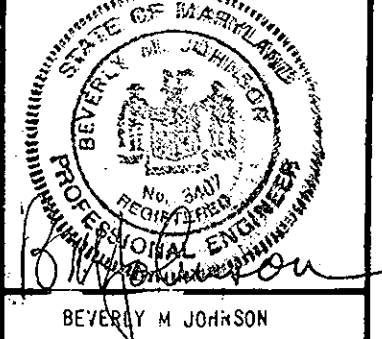


APPROVED
PLANNING BOARD
OF HOWARD COUNTY
DATE 6-7-78

APPROVED: FOR PUBLIC WATER, PUBLIC SEWERAGE, STORM DRAINAGE SYSTEMS AND ROADS, HOWARD COUNTY DEPARTMENT OF PUBLIC WORKS.
Richard E. Grendenberger 7/25/78
DIRECTOR
W.O. Libert 7-24-78
CHIEF, BUREAU OF HIGHWAYS

APPROVED: HOWARD COUNTY OFFICE OF PLANNING AND ZONING
Thomas L. Hamill 7-31-78
PLANNING DIRECTOR
Richard W. Masserman 7-31-78
CHIEF, DIVISION OF LAND DEVELOPMENT

APPROVED: FOR PUBLIC WATER AND PUBLIC SEWERAGE SYSTEMS, HOWARD COUNTY HEALTH DEPARTMENT.
James G. ... 7-25-78
COUNTY HEALTH OFFICER



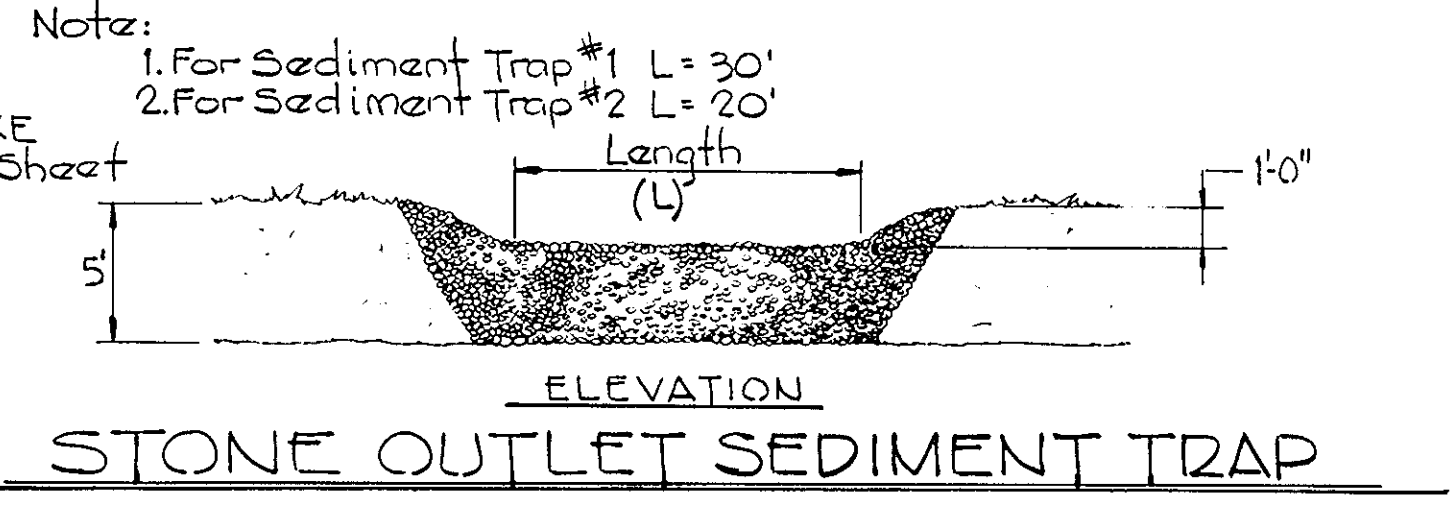
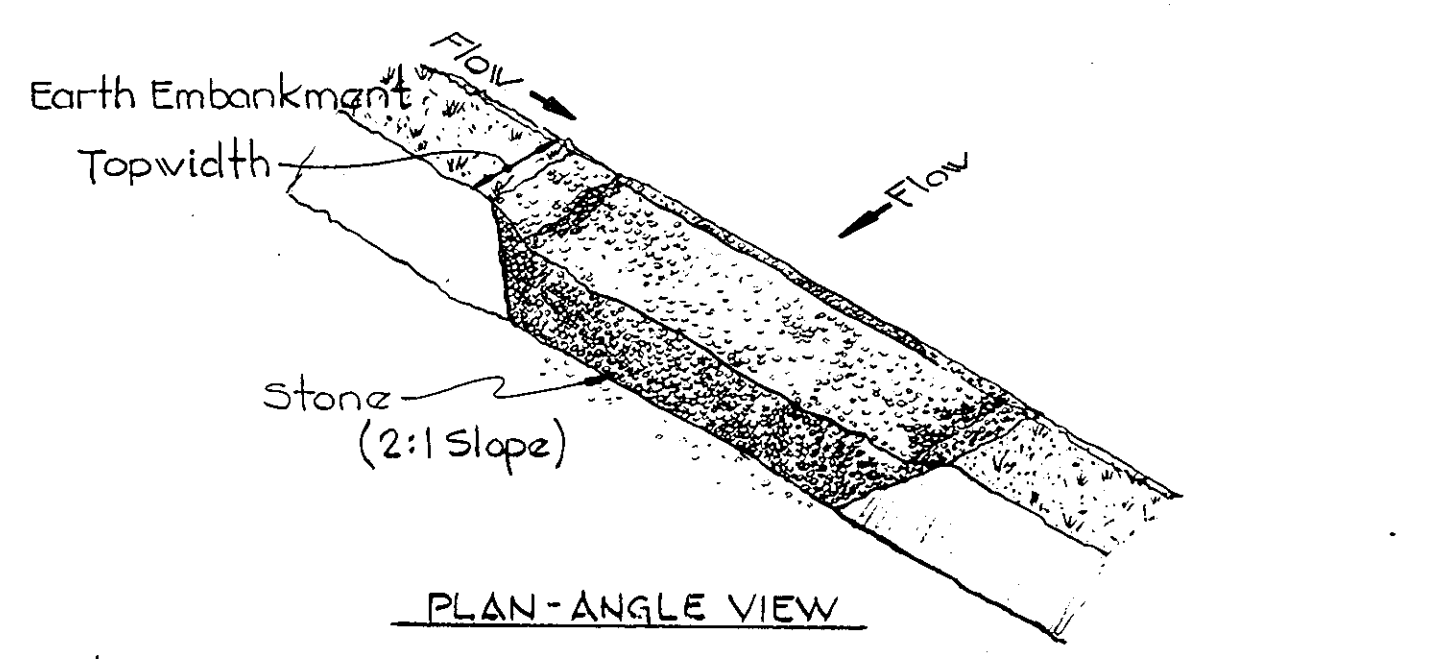
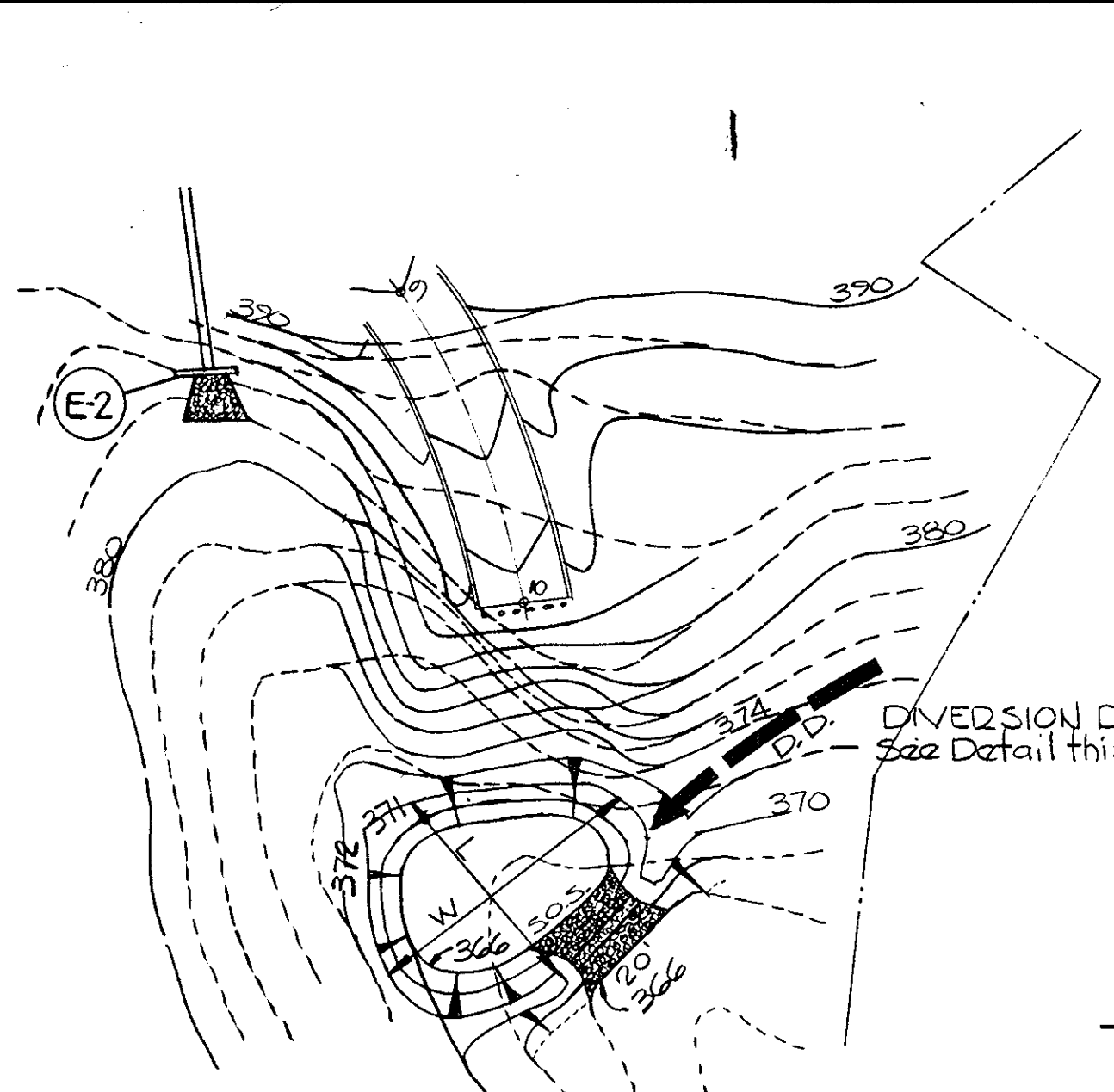
PURDUM & JESCHKE
CONSULTING ENGINEERS
LAND SURVEYORS
1023 North Calvert Street
Baltimore, Maryland 21202 301/837-0194

ARCHITECT:
MEYERS, D'ALEO & PATTON INC.
PRINDLE, PATRICK & PARTNERS
SUITE 1200 - 1 NORTH CHARLES STREET
BALTIMORE, MARYLAND 21201

MECHANICAL-ELECTRICAL ENGINEERS
HENRY ADAMS INC.
SUITE 1200 - EQUITABLE BLDG.
401 WASHINGTON AVENUE
TOWSON, MARYLAND 21284

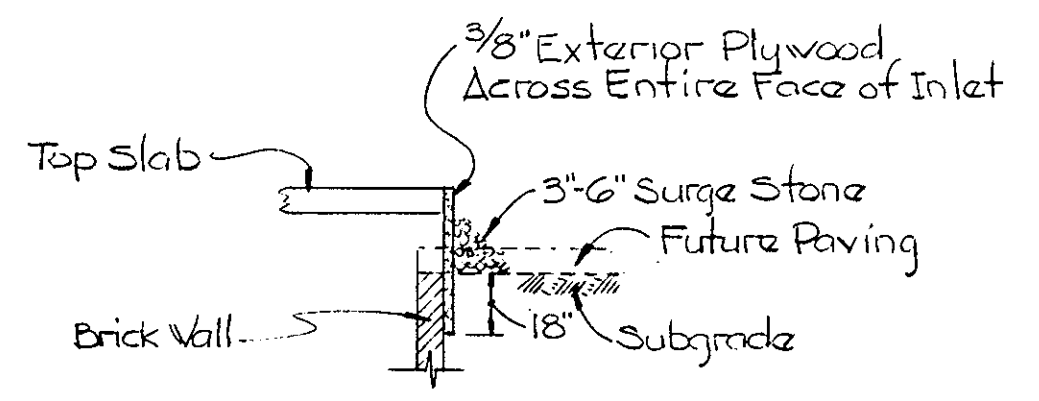
HOWARD COUNTY DEPARTMENT OF PUBLIC WORKS
PROJECT C-5-0123
HOWARD COUNTY DETENTION CENTER
ROAD PROFILES AND DETAILS
ELLCOTT CITY
2ND ELECTION DISTRICT
MARYLAND

SHEET 3 OF 7
Designed By: RT
Drawn By: JFT
Checked By: RBC



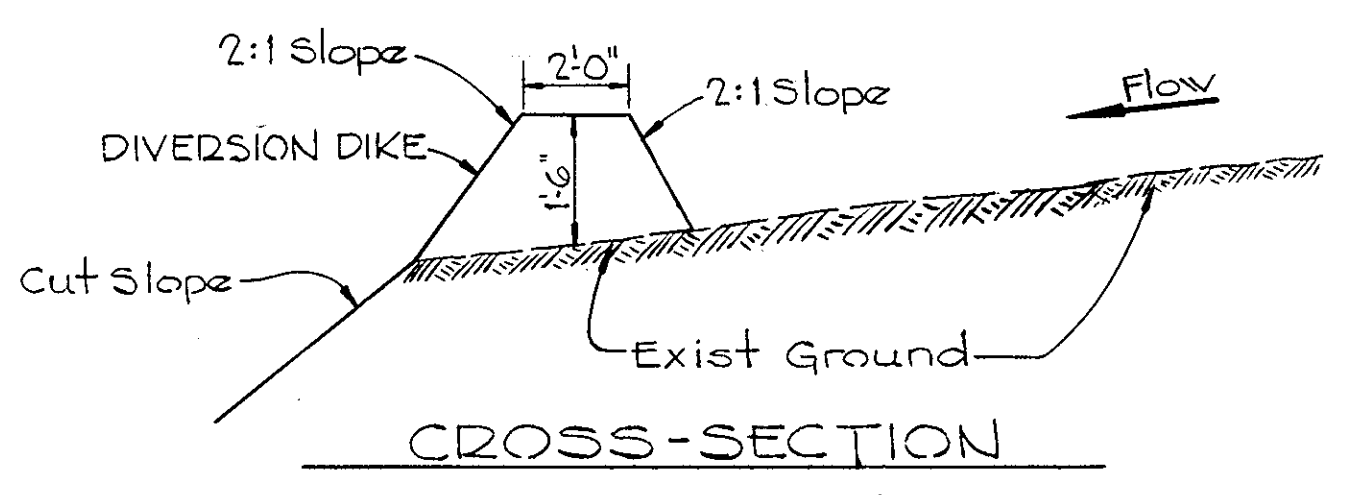
SEDIMENT TRAP #2
 TOP EMBANKMENT ELEV. = 371.00
 TOP STONE OUTLET ELEV. = 370.00
 CLEANOUT ELEV. = 368.00
 LENGTH = 70' ±
 WIDTH = 85' ±
 DEPTH = 4'

DETAIL PLAN SEDIMENT TRAP #2
 SCALE: 1" = 50'

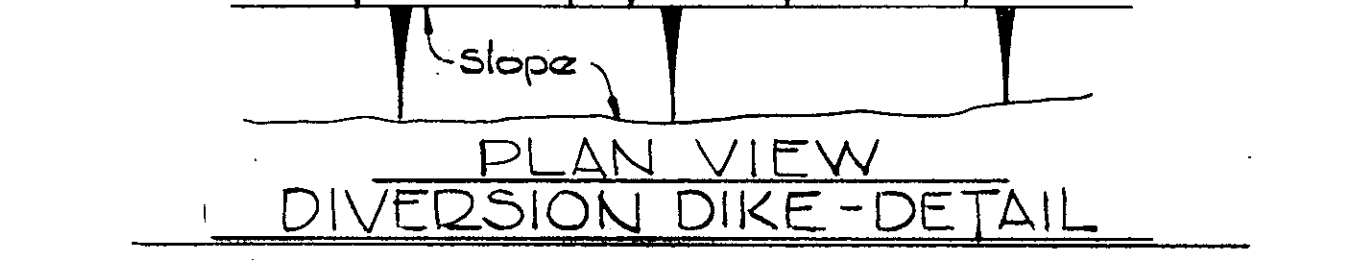


TYPE 'A' INLET PROTECTION DETAIL
 NOT TO SCALE

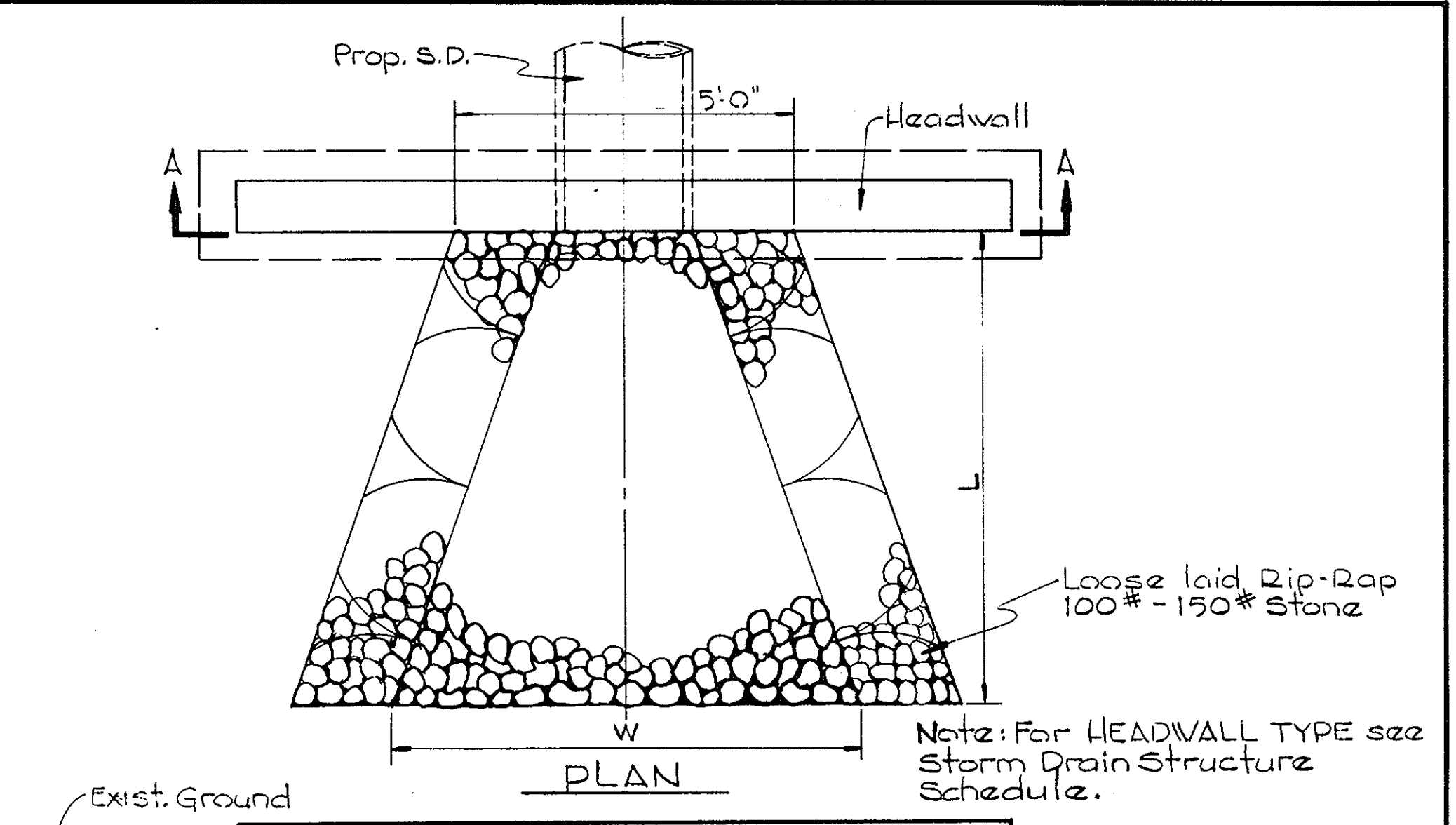
STORM DRAIN STRUCTURE SCHEDULE						
NO.	TYPE	INV. IN	INV. OUT	TOP ELEV.	PAGE # DWG NO.	OUTLET PROTECTION
I-1	"A-5"	342.40	342.15	345.93	119-A, D-4A	
I-2	"		343.01	345.80	"	
I-3	"	350.41	350.16	355.00	"	
I-4	"	354.00	353.85	357.80	"	
I-5	"	355.70	355.55	360.47	"	
I-6	"		356.00	360.47	"	
I-7	"	340.00	339.85	345.00	"	
I-8	"		389.00	392.69	"	
I-9	"		388.73	392.69	"	
E-1	"C"	330.50	333.25	107, D-52	L=10' W=11'3"	
E-2	"		382.68	384.68	"	L=14' W=14'9"
SW-1	"C"		300.50	304.00	"	L=24' W=27'



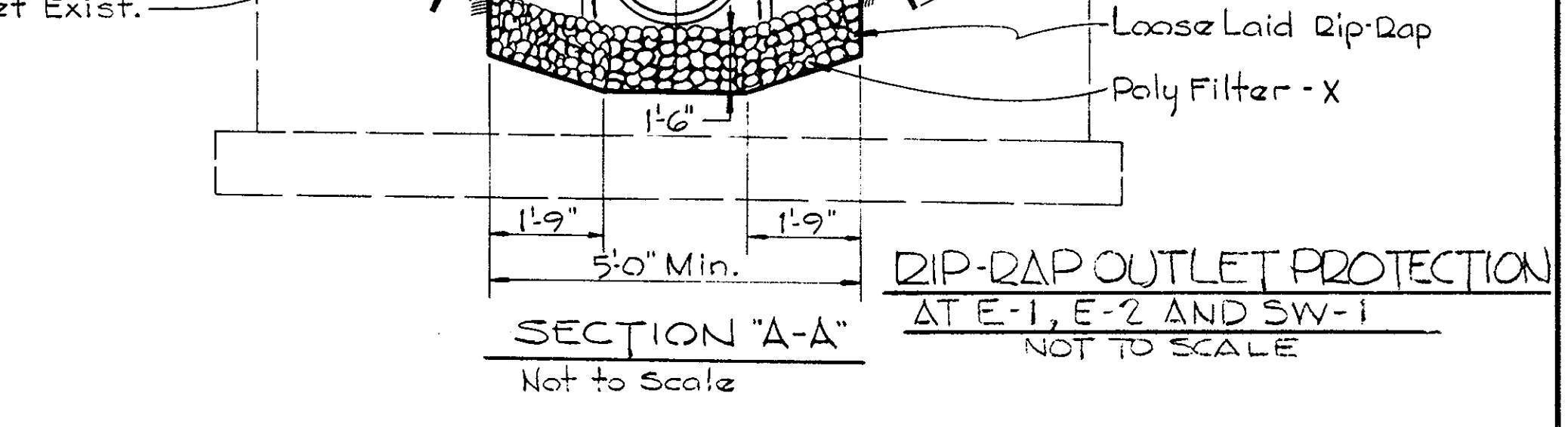
CROSS-SECTION DIVERSION DIKE



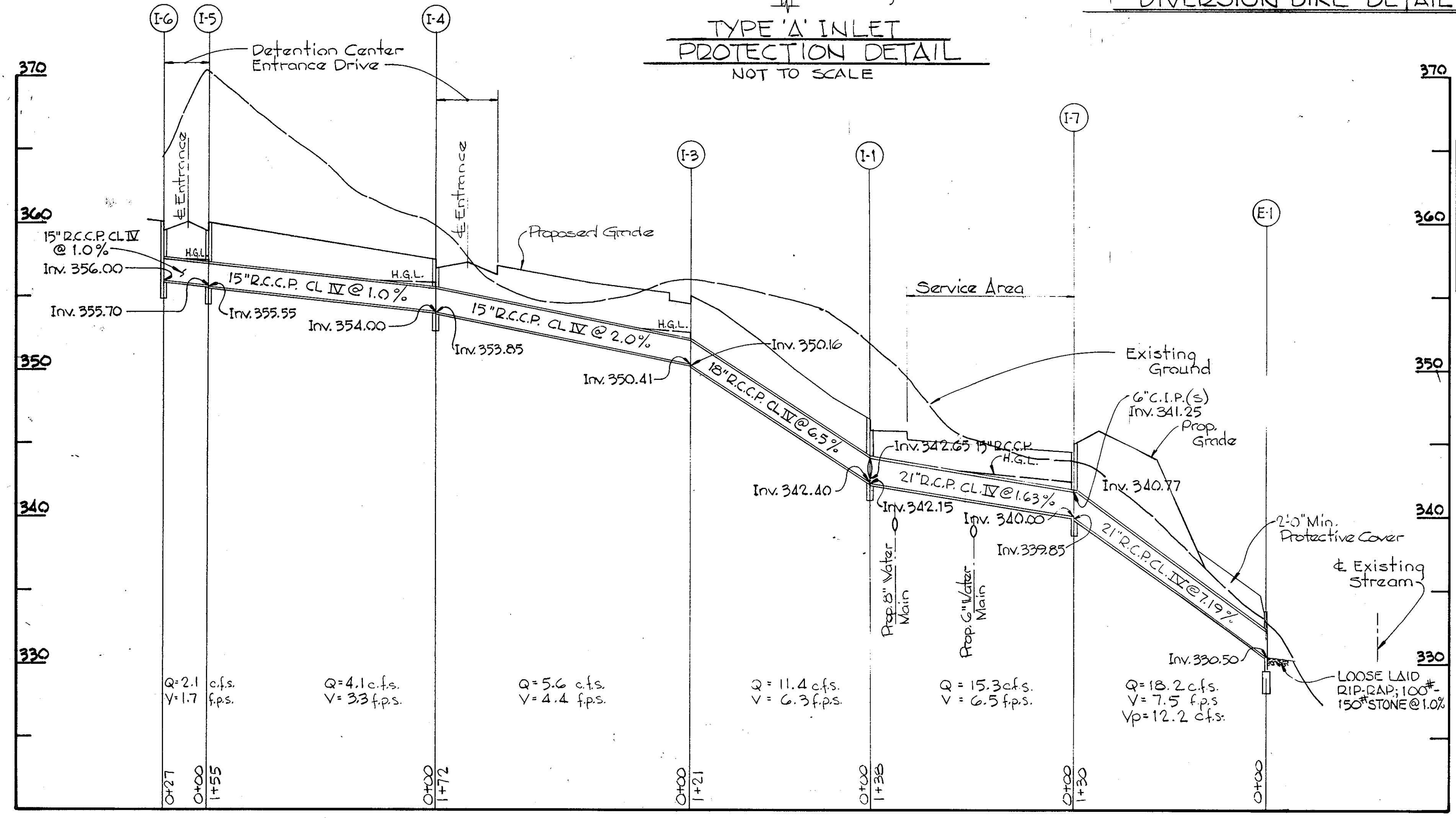
PLAN VIEW DIVERSION DIKE-DETAIL



RIP-RAP OUTLET PROTECTION AT E-1, E-2 AND SW-1
 NOT TO SCALE

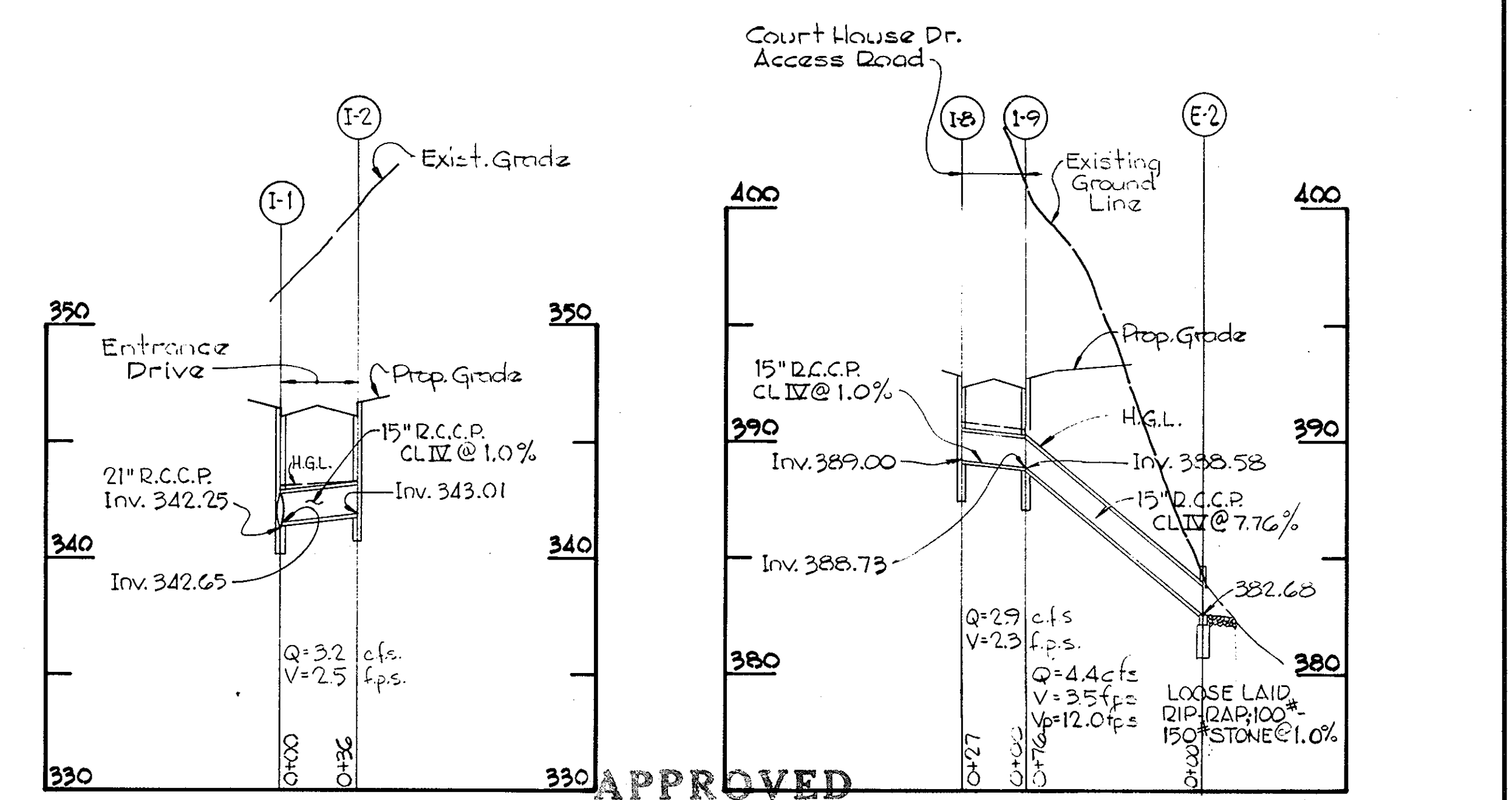


SECTION 'A-A'
 NOT TO SCALE



PROFILES
 Scale: Horiz. 1" = 50'
 Vert. 1" = 5'

<p>DEVELOPER</p> <p>THIS IS TO CERTIFY THAT ALL DEVELOPMENT AND/OR CONSTRUCTION WILL BE DONE ACCORDING TO THIS PLAN OF DEVELOPMENT AND PLAN FOR EROSION AND SEDIMENT CONTROL AND TO AUTHORIZE PERIODIC ON-SITE INSPECTION BY THE HOWARD SOIL CONSERVATION DISTRICT OR THEIR AUTHORIZED AGENTS, AS ARE DEEMED NECESSARY. DEVIATION FROM THIS PLAN WILL NOT BE MADE UNLESS AUTHORIZED BY THE HOWARD SOIL CONSERVATION DISTRICT.</p> <p><i>John S. ...</i> SIGNATURE DATE 7/16/78</p>	<p>HOWARD SOIL CONSERVATION DISTRICT</p> <p>REVIEWED FOR HOWARD SOIL CONSERVATION DISTRICT AND MEETS TECHNICAL REQUIREMENTS</p> <p><i>C. Wayne Ray</i> 7-17-78 SIGNATURE DATE</p> <p>APPROVED: <i>Wes ...</i> 7-17-78 HOWARD SOIL CONSERVATION DISTRICT DATE</p>	<p>PROFESSIONAL ENGINEER</p> <p>I CERTIFY THAT THIS PLAN FOR EROSION AND SEDIMENT CONTROL REPRESENTS A PRACTICAL AND WORKABLE PLAN BASED ON MY PERSONAL KNOWLEDGE OF THE SITE CONDITIONS AND THAT IT WAS PREPARED IN ACCORDANCE WITH THE REQUIREMENTS OF THE HOWARD SOIL CONSERVATION DISTRICT</p> <p><i>Beverly M. Johnson</i> 7-10-78 SIGNATURE DATE</p> <p>BEVERLY M. JOHNSON REG. NO. 3407 DATE</p>
--	---	---



APPROVED
 PLANNING BOARD OF HOWARD COUNTY
 DATE 6-7-78

<p>APPROVED: FOR PUBLIC WATER, PUBLIC SEWERAGE, STORM DRAINAGE SYSTEMS AND ROADS. HOWARD COUNTY DEPARTMENT OF PUBLIC WORKS.</p> <p><i>Richard C. ...</i> 7-25-78 DIRECTOR DATE</p> <p><i>W. O. ...</i> 7-24-78 CHIEF, BUREAU OF HIGHWAYS DATE</p>	<p>APPROVED: HOWARD COUNTY OFFICE OF PLANNING AND ZONING</p> <p><i>Thomas L. ...</i> 7-31-78 PLANNING DIRECTOR DATE</p> <p><i>Beverly M. Johnson</i> 7-25-78 CHIEF, DIVISION OF LAND DEVELOPMENT DATE</p>	<p>APPROVED: FOR PUBLIC WATER AND PUBLIC SEWERAGE SYSTEMS. HOWARD COUNTY HEALTH DEPARTMENT.</p> <p><i>John S. ...</i> 7-28-78 COUNTY HEALTH OFFICER DATE</p>	<p>PURDUM & JESCHKE CONSULTING ENGINEERS LAND SURVEYORS</p> <p>1023 North Calvert Street Baltimore, Maryland 21202 301/837-0194</p>	<p>ARCHITECT:</p> <p>MEYERS, D'ALEO & PATTON INC. PRINDLE, PATRICK & PARTNERS</p> <p>SUITE 1200 - 1 NORTH CHARLES STREET BALTIMORE, MARYLAND 21201</p>	<p>MECHANICAL-ELECTRICAL ENGINEERS</p> <p>HENRY ADAMS INC.</p> <p>SUITE 1200 - EQUITABLE BLDG. 401 WASHINGTON AVENUE TOWSON, MARYLAND 21204</p>	<p>HOWARD COUNTY DEPARTMENT OF PUBLIC WORKS PROJECT C-5-0123</p> <p>HOWARD COUNTY DETENTION CENTER STORM DRAIN PROFILES AND DETAILS ELLICOTT CITY MARYLAND 2ND ELECTION DISTRICT</p>	<p>SHEET 4 OF 7</p> <p>Designed By: RT Drawn By: LFT Checked By: RBC</p>
---	---	---	---	---	---	--	--

DEVELOPER
 THIS IS TO CERTIFY THAT ALL DEVELOPMENT AND/OR CONSTRUCTION WILL BE DONE ACCORDING TO THIS PLAN OF DEVELOPMENT AND PLAN FOR EROSION AND SEDIMENT CONTROL AND TO AUTHORIZE PERIODIC ON-SITE INSPECTION BY THE HOWARD SOIL CONSERVATION DISTRICT OR THEIR AUTHORIZED AGENTS, AS ARE DEEMED NECESSARY. DEVIATION FROM THIS PLAN WILL NOT BE MADE UNLESS AUTHORIZED BY THE HOWARD SOIL CONSERVATION DISTRICT.

John [Signature] 7/1/78
 SIGNATURE DATE

HOWARD SOIL CONSERVATION DISTRICT
 REVIEWED FOR HOWARD SOIL CONSERVATION DISTRICT AND MEETS TECHNICAL REQUIREMENTS.

C. Wayne Key 7-17-78
 SIGNATURE DATE

THIS DEVELOPMENT PLAN IS APPROVED FOR SOIL EROSION AND SEDIMENT CONTROL BY THE HOWARD SOIL CONSERVATION DISTRICT.

APPROVED: *[Signature]* 7/1/78
 HOWARD SOIL CONSERVATION DISTRICT DATE

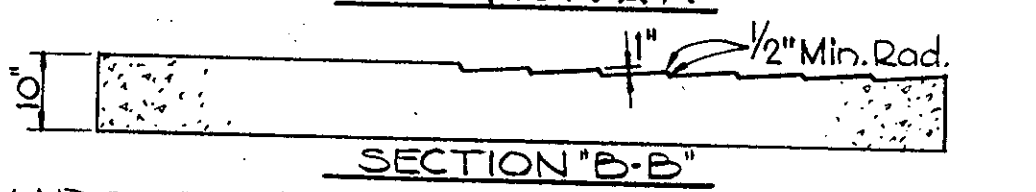
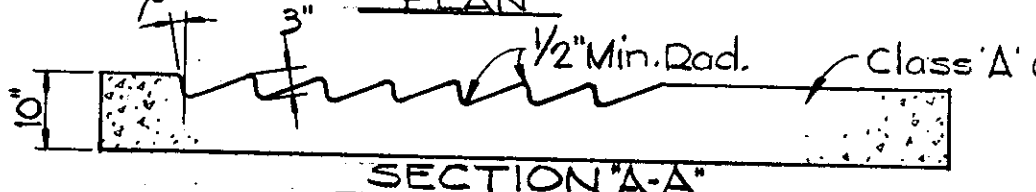
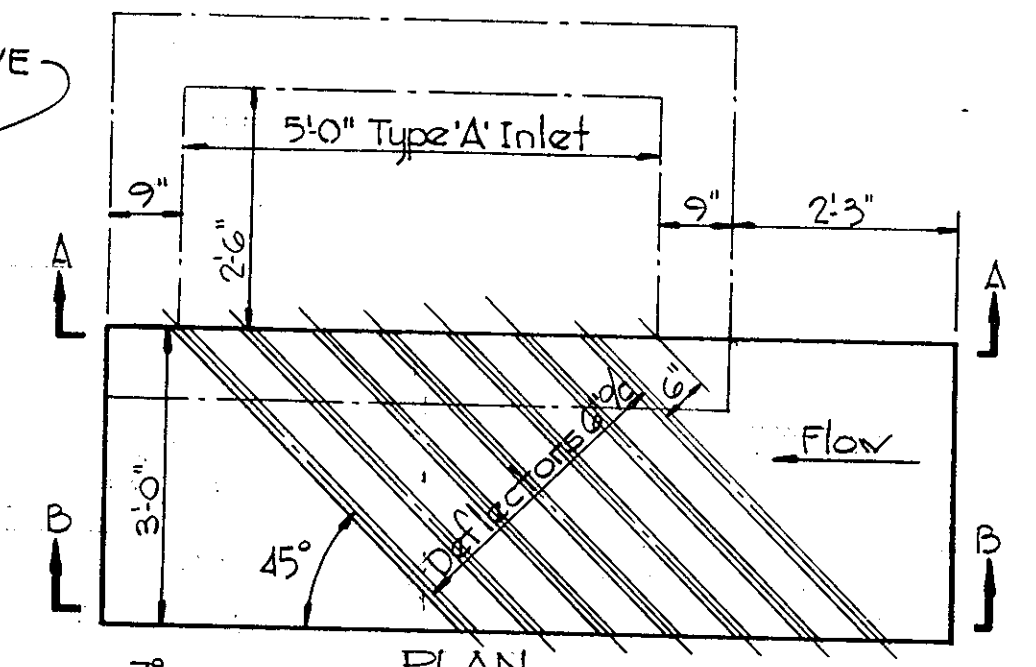
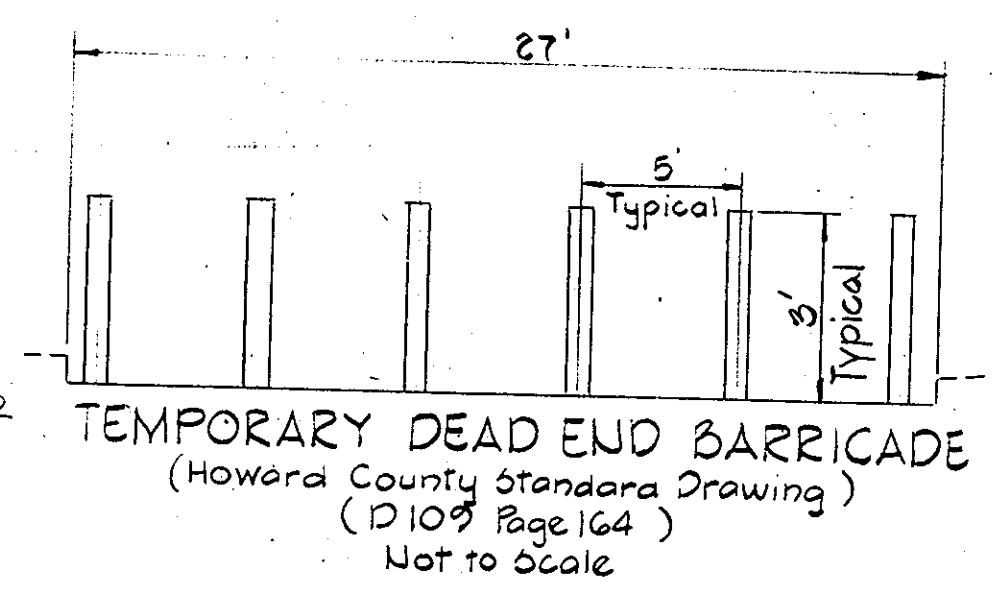
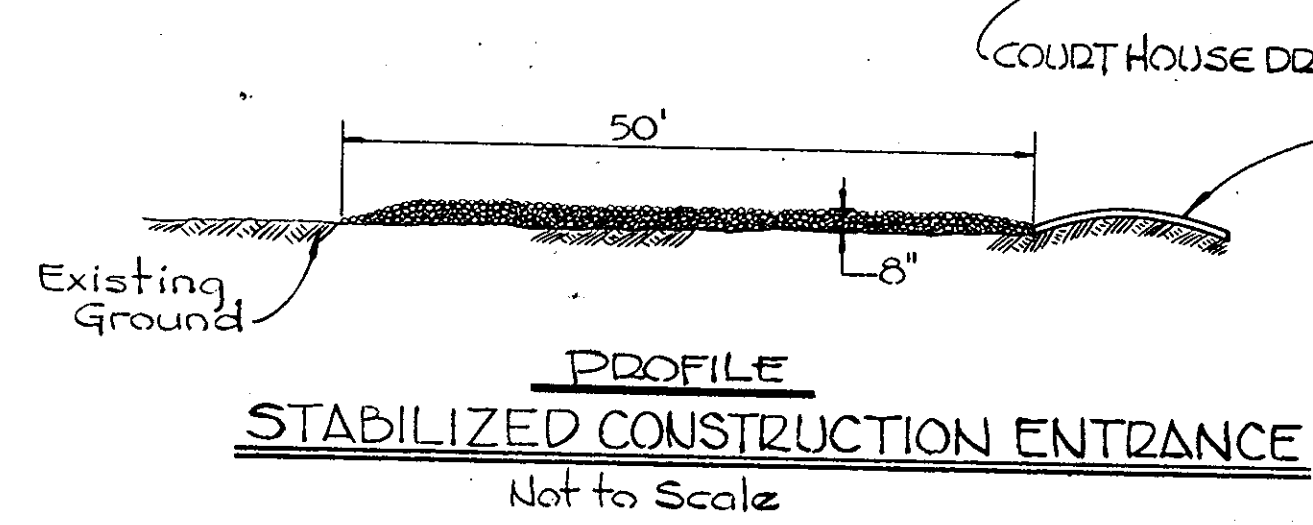
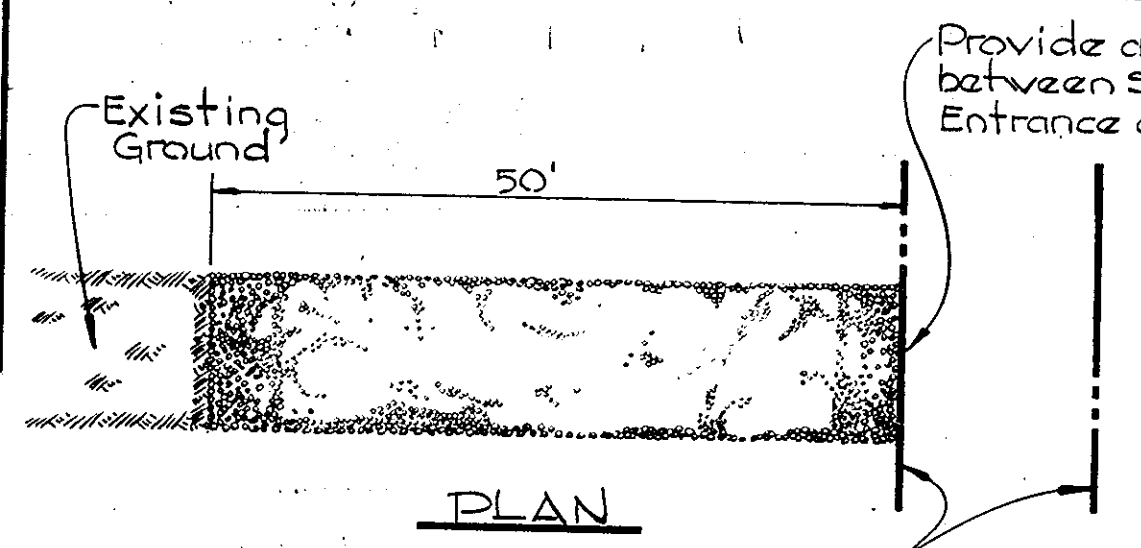
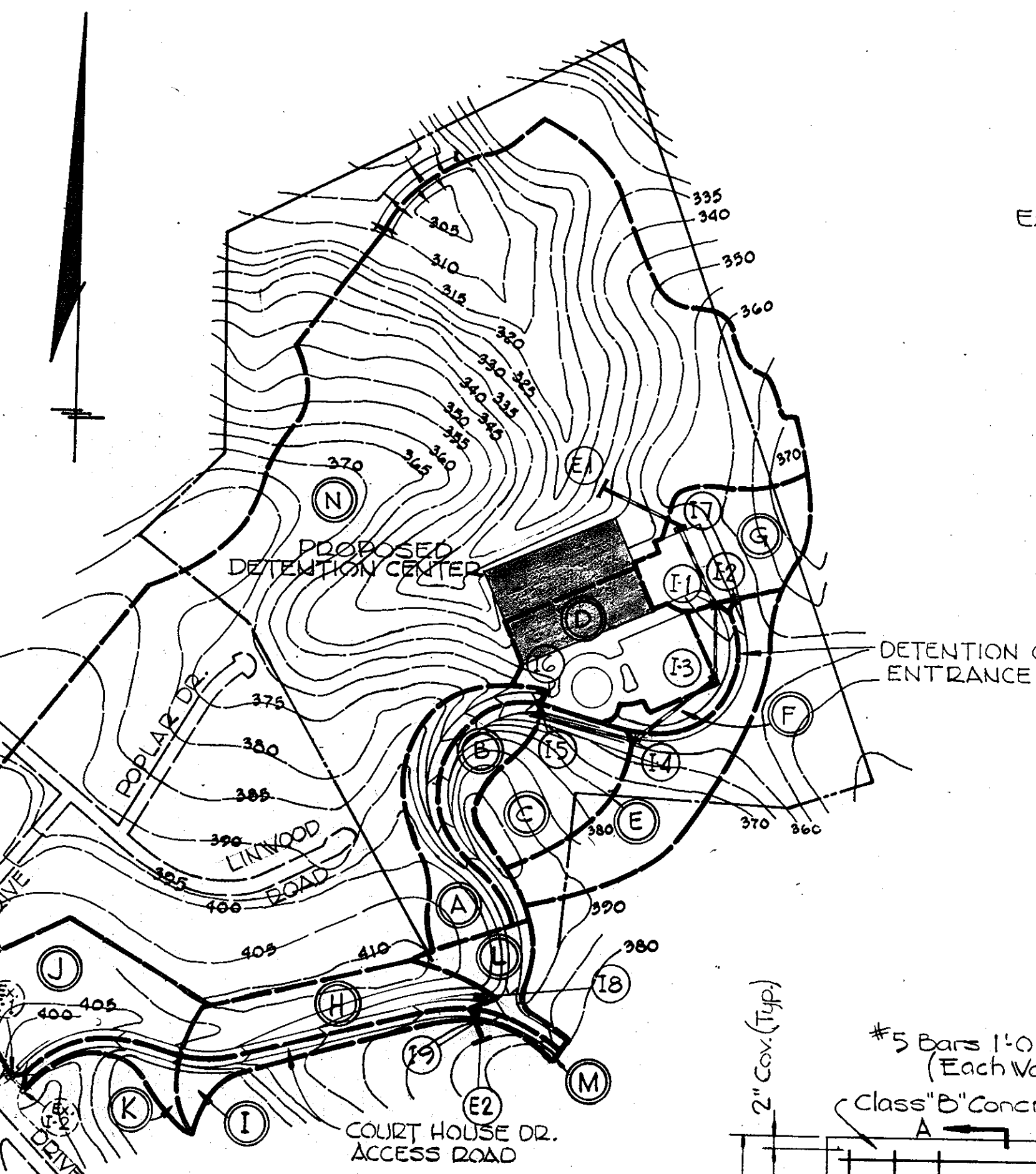
PROFESSIONAL ENGINEER

I CERTIFY THAT THIS PLAN FOR EROSION AND SEDIMENT CONTROL REPRESENTS A PRACTICAL AND FEASIBLE PLAN BASED ON MY PERSONAL KNOWLEDGE OF THE SITE CONDITIONS AND THAT IT WAS PREPARED IN ACCORDANCE WITH THE REQUIREMENTS OF THE HOWARD SOIL CONSERVATION DISTRICT.

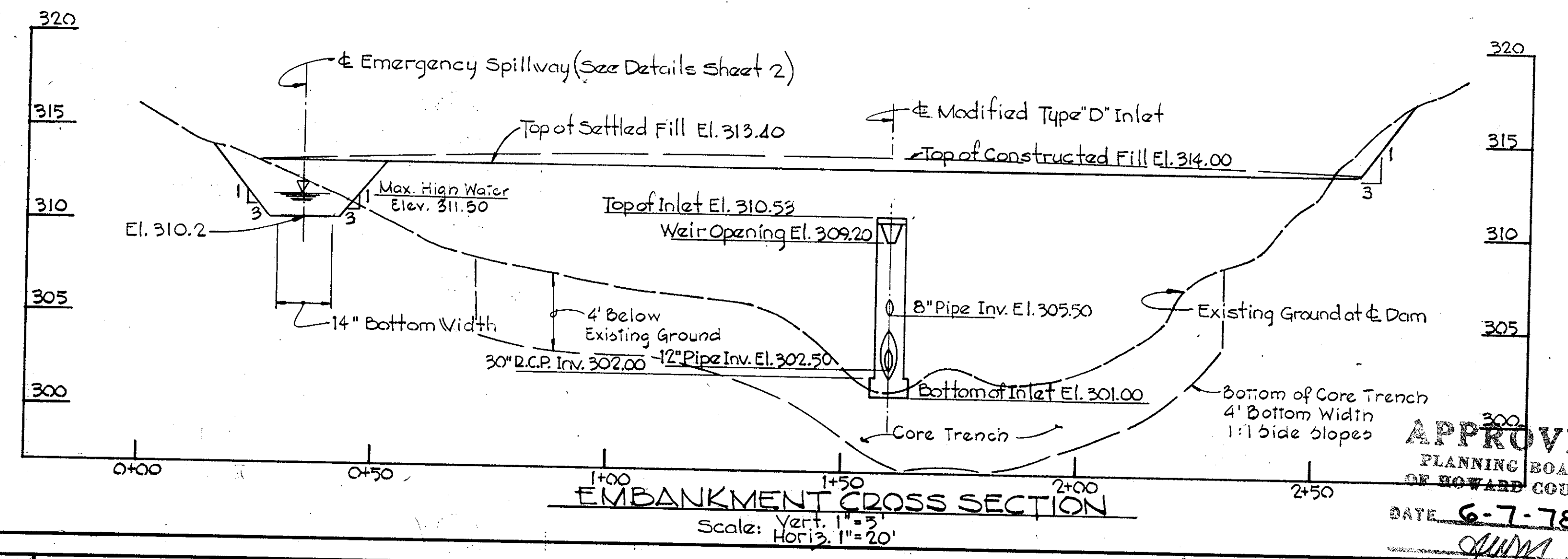
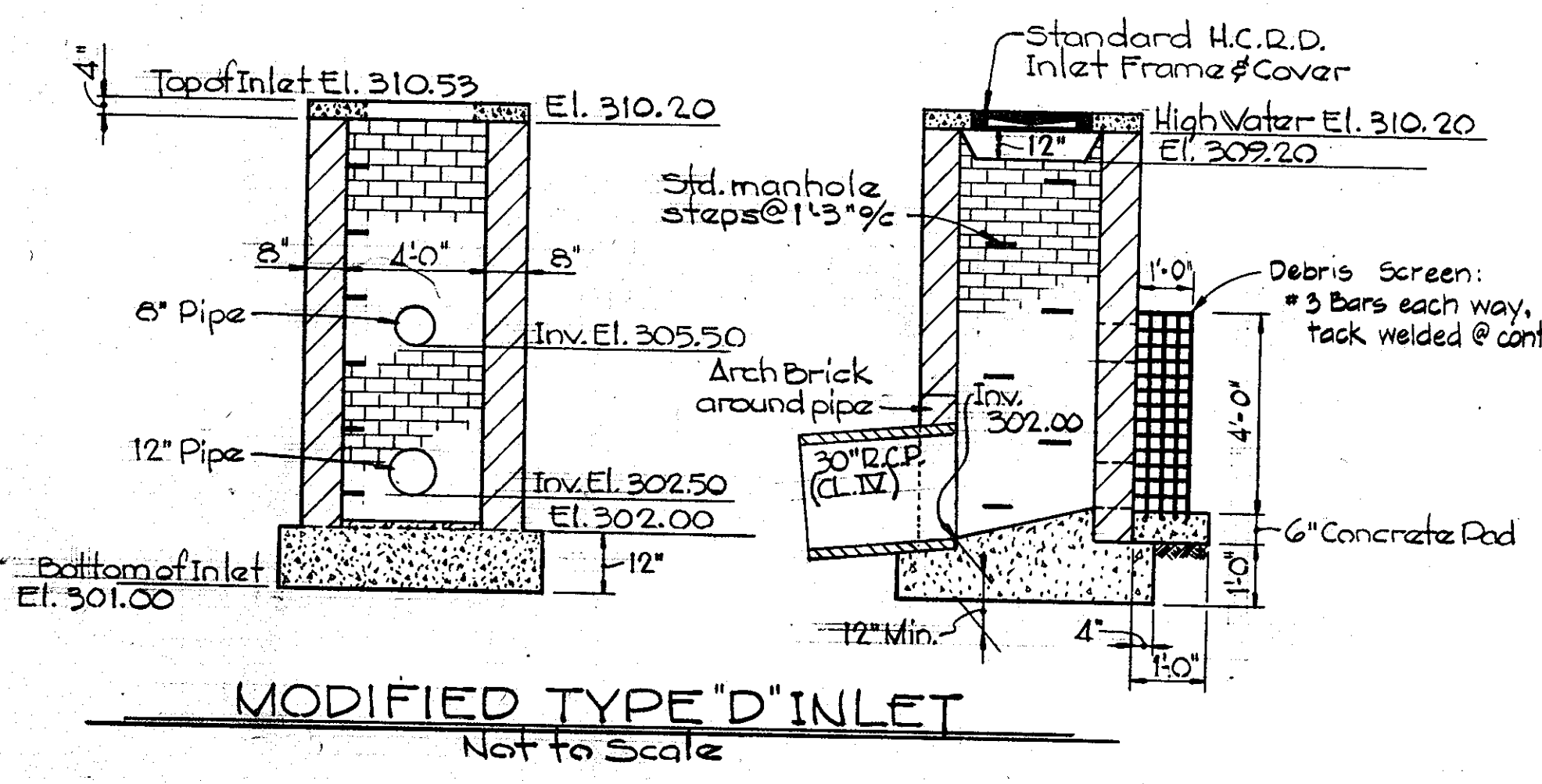
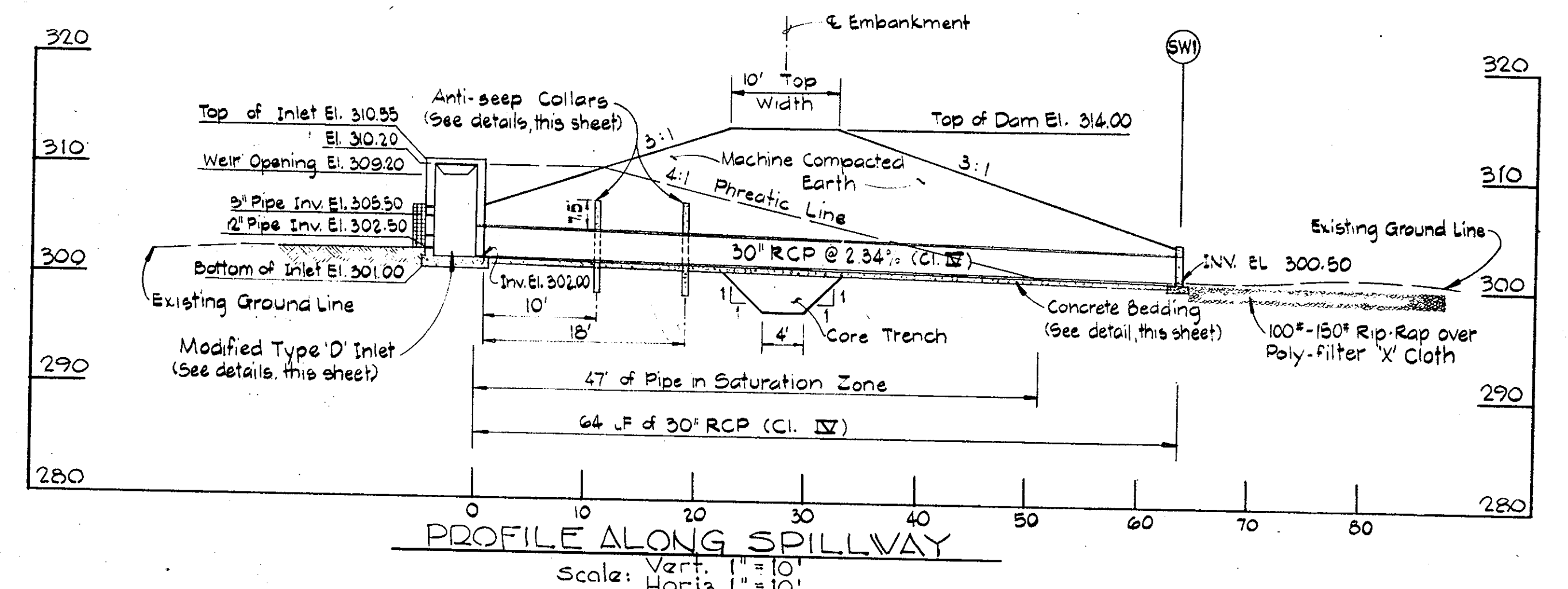
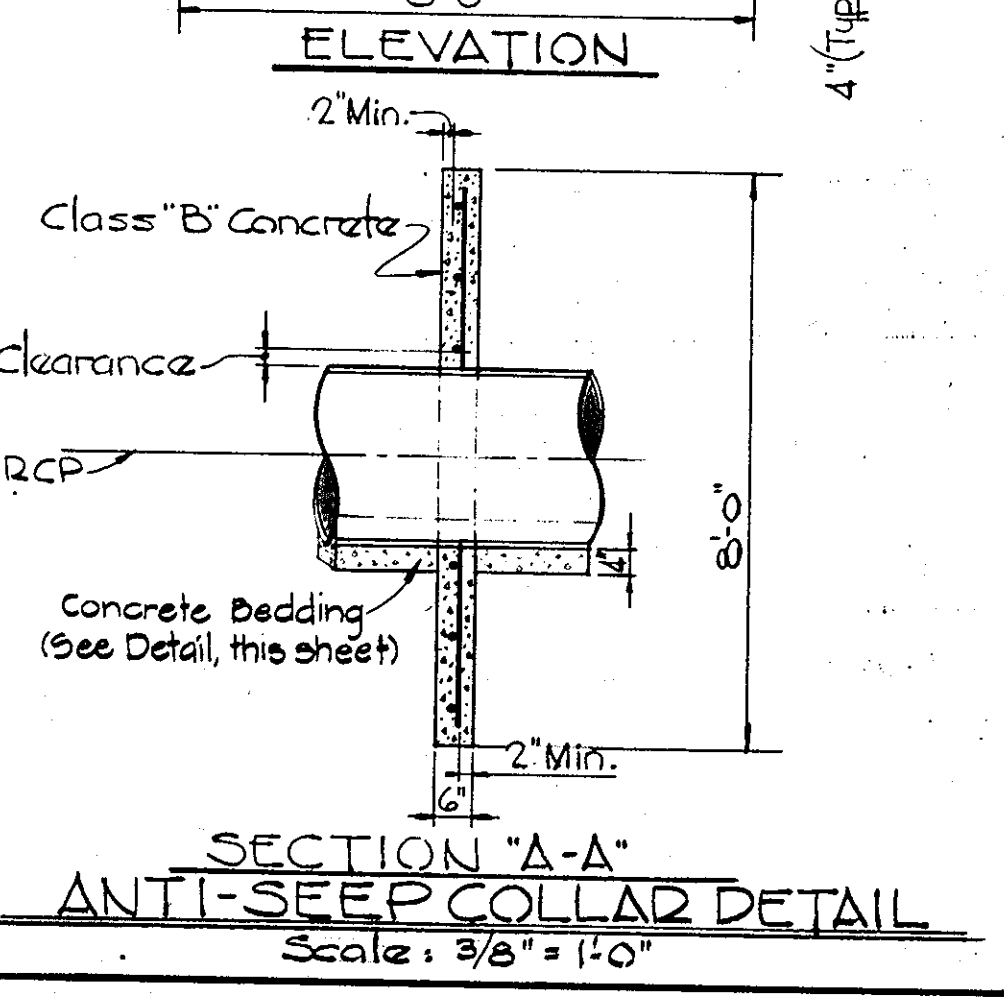
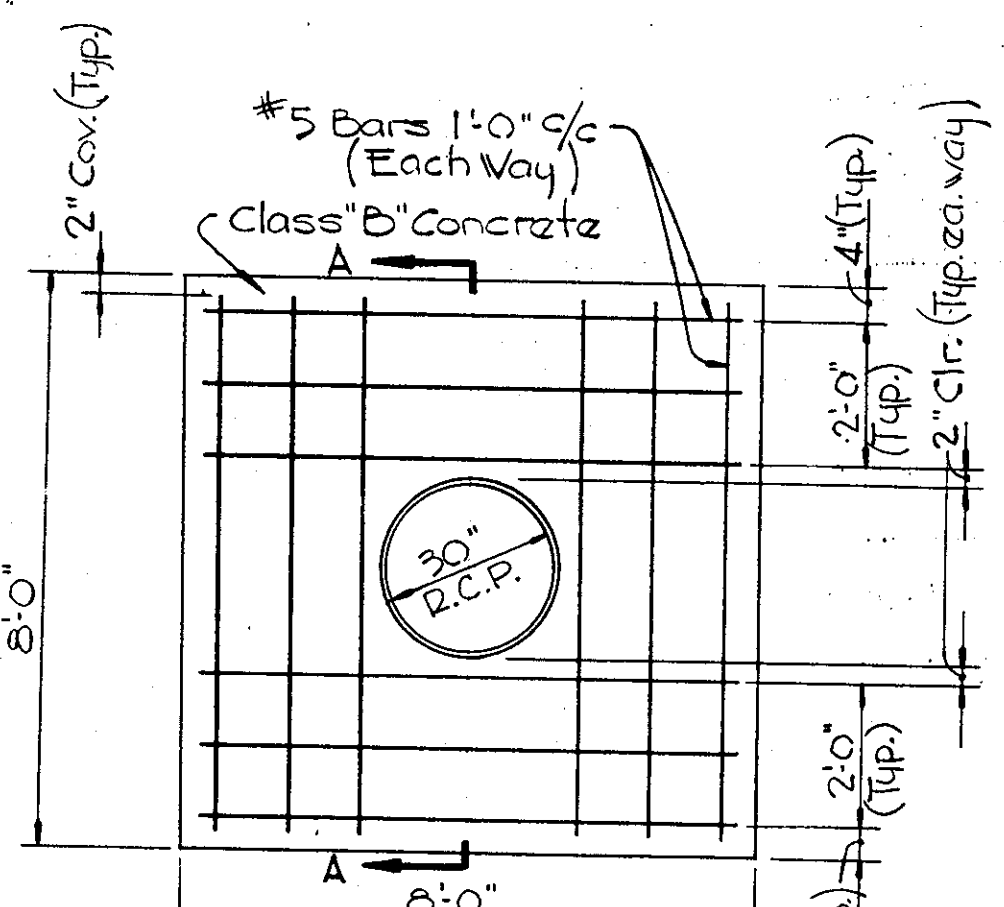
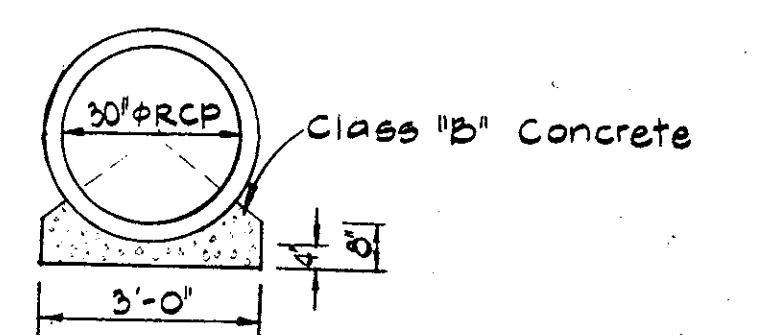
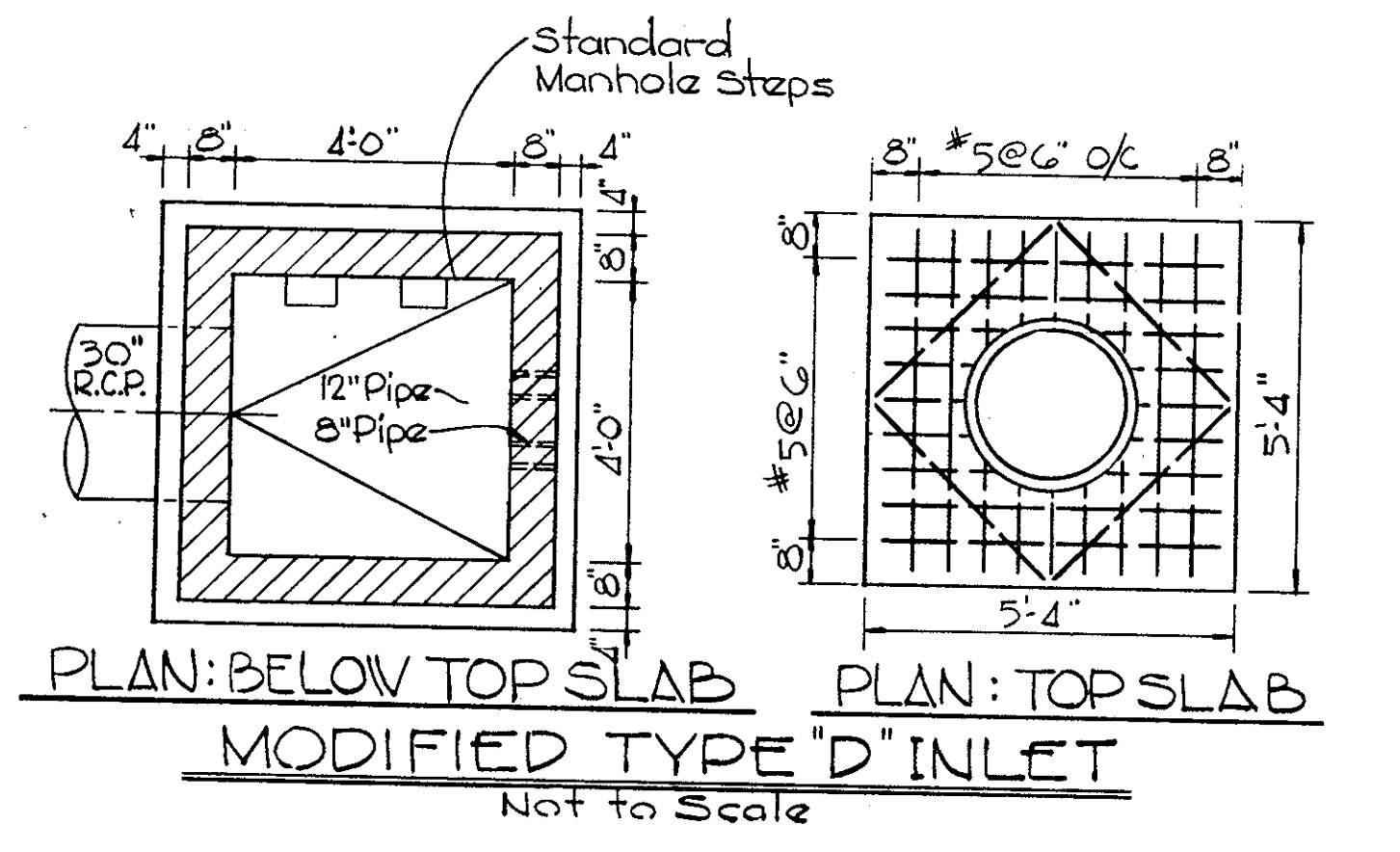
Beverly H. Johnson April 28 '78
 SIGNATURE DATE

BEVERLY H. JOHNSON REG. NO. 3407

DRAINAGE AREA	AREA (ACRES)	ZONING	RUNOFF COEF.
A	.78	R-20	.43
B	.75		.43
C	.98		.30
D	1.23		.80
E	1.46		.37
F	.43		.37
G	1.09		.45
H	.95		.50
I	.29		.95
J	1.60		.40
K	.21		.40
L	.32		.45
M	.07		.90
N	21.73		.20



CURB TYPE INLET WITH DEFLECTORS



APPROVED
 PLANNING BOARD
 OF HOWARD COUNTY
 DATE 6-7-78

PURDUM & JESCHKE
 CONSULTING ENGINEERS
 LAND SURVEYORS
 1023 North Calvert Street
 Baltimore, Maryland 21202 301/837-0194

ARCHITECT:
MEYERS, D'ALEO & PATTON INC.
 PRINDLE, PATRICK & PARTNERS
 SUITE 1200 - 1 NORTH CHARLES STREET
 BALTIMORE, MARYLAND 21201

MECHANICAL-ELECTRICAL ENGINEERS
HENRY ADAMS INC.
 SUITE 1200 - EQUITABLE BLDG.
 401 WASHINGTON AVENUE
 TOWSON, MARYLAND 21204

APPROVED: FOR PUBLIC WATER, PUBLIC SEWERAGE, STORM DRAINAGE SYSTEMS AND ROADS, HOWARD COUNTY DEPARTMENT OF PUBLIC WORKS.

Richard E. Stuedenberger 7/25/78
 DIRECTOR DATE

W. O. F. [Signature] 7-24-78
 CHIEF, BUREAU OF HIGHWAYS DATE

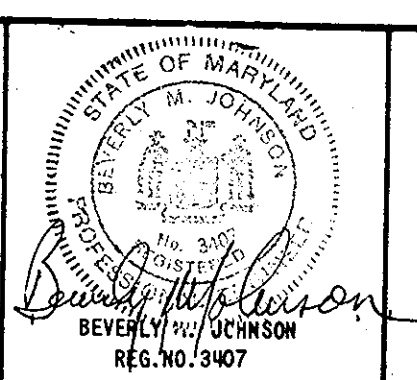
APPROVED: HOWARD COUNTY OFFICE OF PLANNING AND ZONING

Thomas G. Harris 7-31-78
 PLANNING DIRECTOR DATE

[Signature] 7-27-78
 CHIEF, DIVISION OF LAND DEVELOPMENT DATE

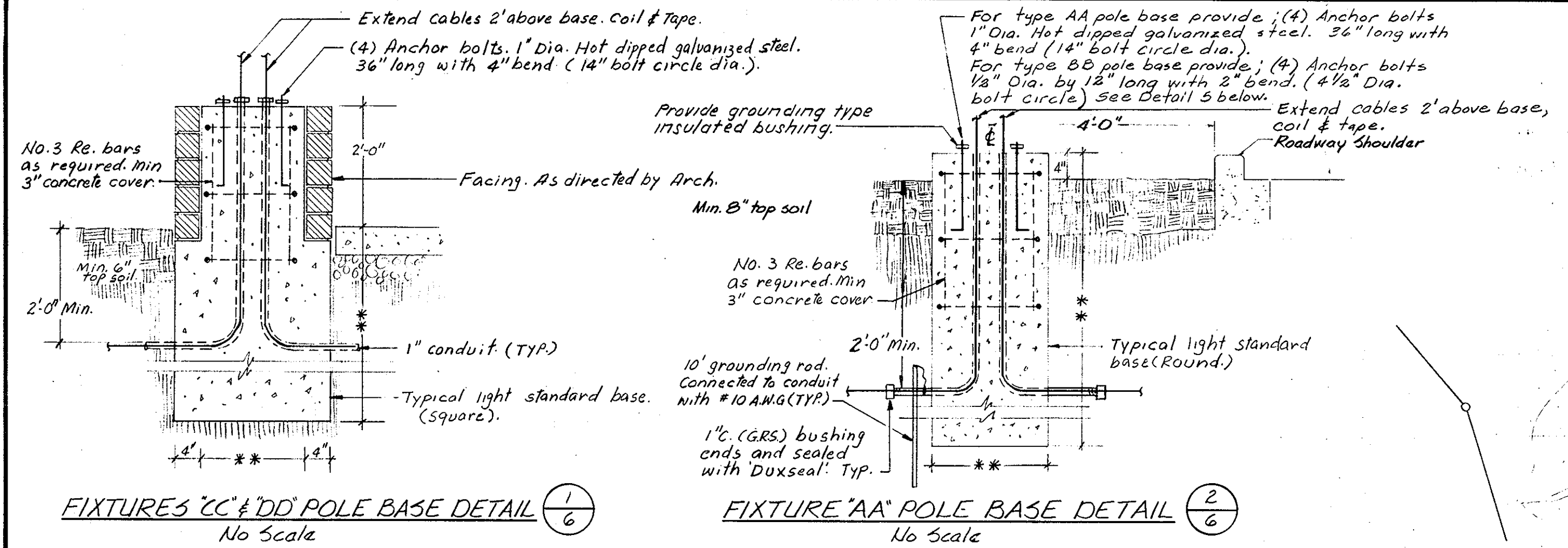
APPROVED: FOR PUBLIC WATER AND PUBLIC SEWERAGE SYSTEMS, HOWARD COUNTY HEALTH DEPARTMENT

John [Signature] 7-27-78
 COUNTY HEALTH OFFICER DATE

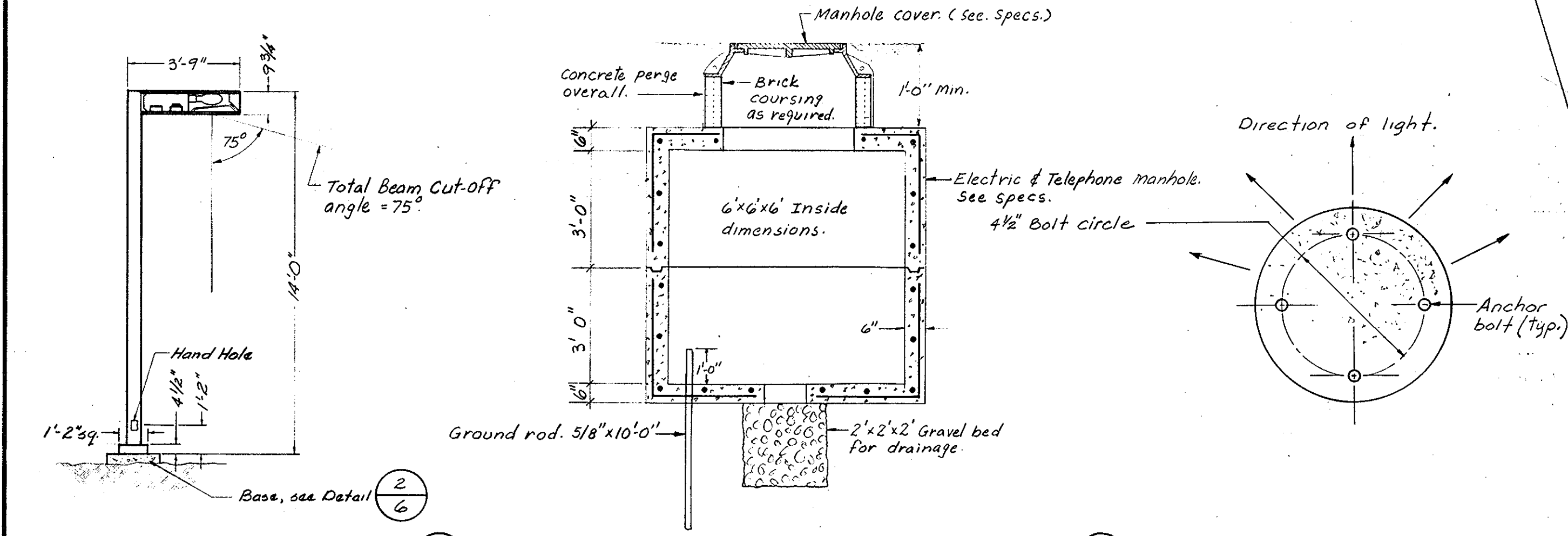


HOWARD COUNTY DEPARTMENT OF PUBLIC WORKS
 PROJECT C-5-0123
 HOWARD COUNTY DETENTION CENTER
 STORM WATER MANAGEMENT DETAILS
 DRAINAGE AREA PLAN
 ELLICOTT CITY 2ND ELECTION DISTRICT MARYLAND

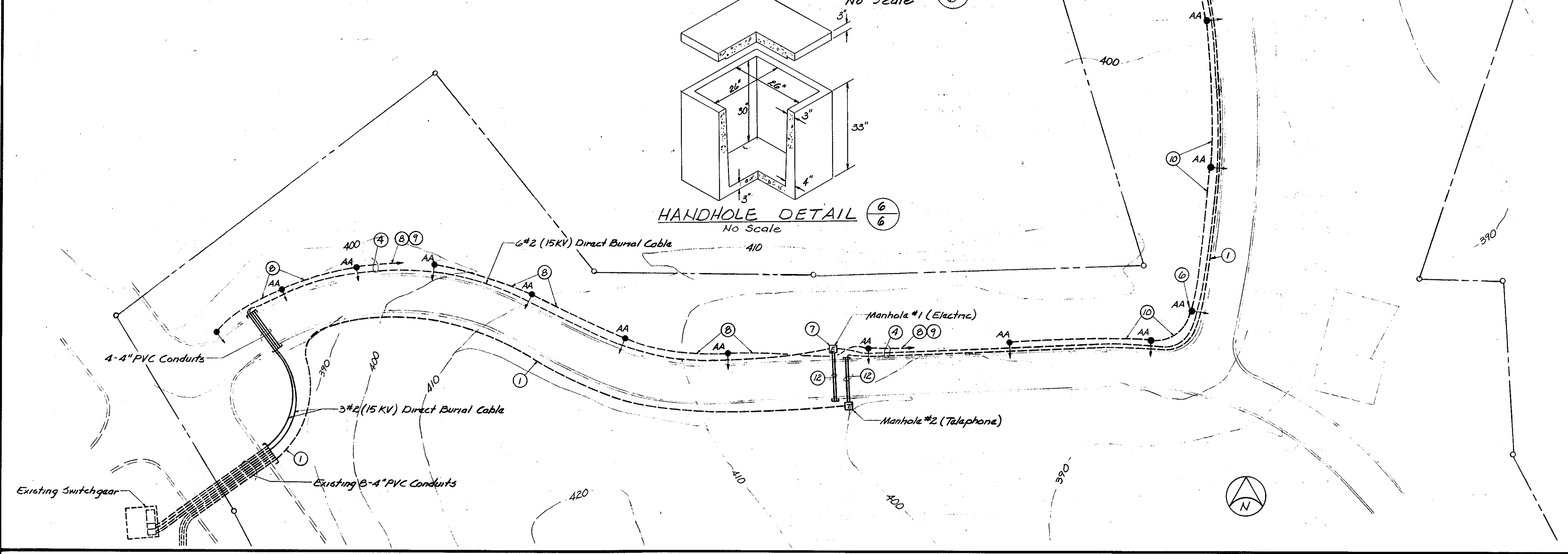
SHEET 5 OF 7
 Designed By: RT
 Drawn By: JFT
 Checked By: RBC



FIXTURES "CC" & "DD" POLE BASE DETAIL (1/6) No Scale
 FIXTURE "AA" POLE BASE DETAIL (2/6) No Scale
 ** To be determined by Engineer after soil borings are available.



FIXTURE "AA" POLE DETAIL (3/6) Scale: 1/4"=1'-0"
 TYPICAL SECTION THRU MANHOLES (4/6) No Scale
 FIXTURE "BB"-ORIENTATION DETAIL (5/6) No Scale
 HANDHOLE DETAIL (6/6) No Scale



Future location for Type-Q Fixture (TYP.)
 400 Watt High Pressure Sodium lamp
 Max. Beam Cut-off - 100' from Bldg.

- SPECIAL NOTES:**
- 1 Direct Burial Telephone Service by C&P Tele. Co. Tranching to be provided by Contractor. Coordinate with C&P Tele. Co. before starting trenching work.
 - 2 2" 10-1" C.
 - 3 Junction Box for stop lights.
 - 4 Run all wiring in same trench.
 - 5 See Base Detail (1/6) Typical for Type "CC" & "DD" bases
 - 6 See Base Detail (2/6) Typical for Type "AA" & "BB" bases.
 - 7 See Manhole Detail (4/6) Typical for Electric & Telephone.
 - 8 2" 4 + 10 G.W. Direct Burial Cable
 - 9 To Handhole #1
 - 10 2" 6 + 10 G.W. Direct Burial Cable
 - 11 2" 10 + 10 G.W. Direct Burial Cable
 - 12 2-4" Conduits (Galvanized Rigid Steel) with bushed ends & sealed with "DUXSEAL".
 - 13 1-2" Conduit (Galvanized Rigid Steel) with bushed ends & sealed with "DUXSEAL".
 - 14 2" B-1" C.

GENERAL NOTE:
 1 The maximum pole height of lighting fixtures at locations AA, CC, & DD will be 14'. Lighting fixtures at location BB are Ballards with 42' height.

APPROVED
 PLANNING BOARD
 OF HOWARD COUNTY
 DATE: 6-7-78

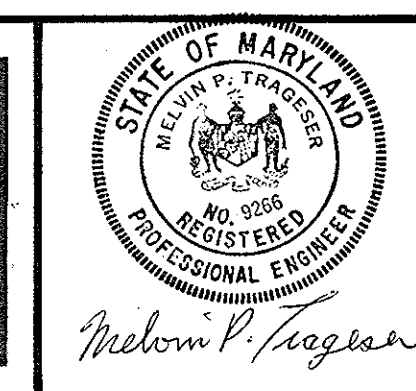
APPROVED: FOR PUBLIC WATER, PUBLIC SEWERAGE, STORM DRAINAGE SYSTEMS AND ROADS. HOWARD COUNTY DEPARTMENT OF PUBLIC WORKS.
 Richard E. Breidenbach 7/25/78
 DIRECTOR DATE

APPROVED: HOWARD COUNTY OFFICE OF PLANNING AND ZONING
 Thomas A. Haniff 7-31-78
 PLANNING DIRECTOR DATE

APPROVED: FOR PUBLIC WATER AND PUBLIC SEWERAGE SYSTEMS. HOWARD COUNTY HEALTH DEPARTMENT.
 Joseph J. Jones 7-28-78
 COUNTY HEALTH OFFICER DATE

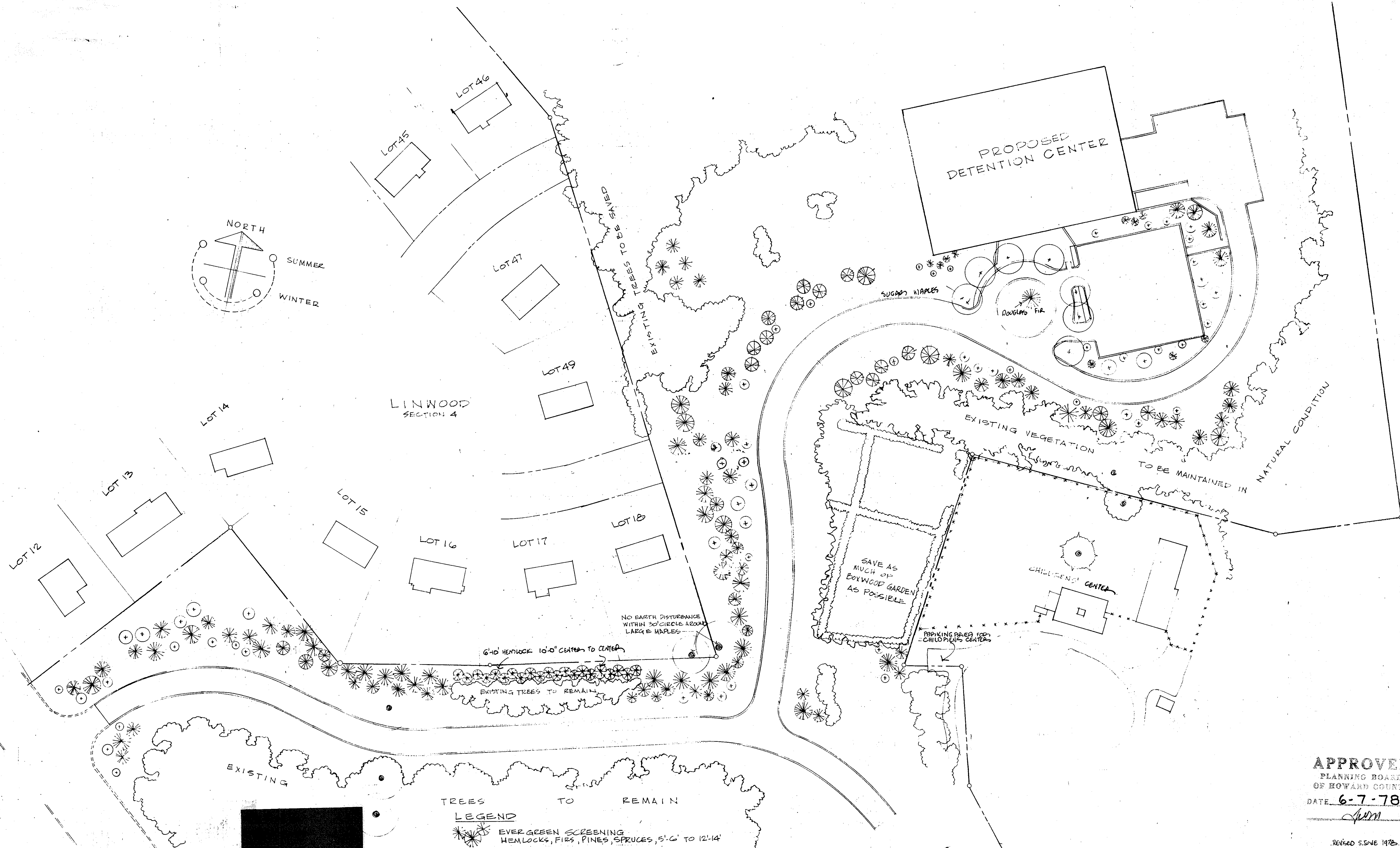
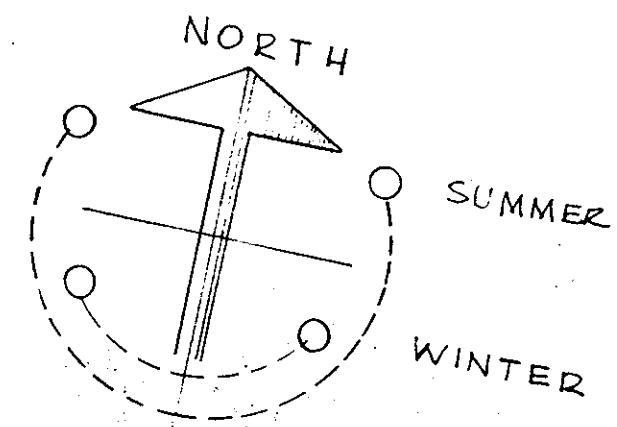
PURDUM & JESCHKE
 CONSULTING ENGINEERS
 LAND SURVEYORS
 1023 North Calvert Street
 Baltimore, Maryland 21202 301/837-0194

Henry Adams, Inc.
 Mechanical-Electrical Engineers
 401 Washington Avenue
 Annapolis, Md. 21403 (410) 266-8500



UTILITIES
 HOWARD COUNTY DETENTION CENTER
 ELLICOTT CITY, MARYLAND
 SCALE: 1" = 50'-0"

SHEET NO. 6
 6 OF 7



TREES TO REMAIN
LEGEND

EVER-GREEN SCREENING
HEMLOCKS, FIRS, PINES, SPRUCES, 5'-6" TO 12'-14"

DECIDUOUS TREES
DOGWOODS, MAPLES, OAKS, PEARS, SWEETGUMS

PLAN: 1" EQUALS 50'

APPROVED
PLANNING BOARD
OF HOWARD COUNTY
DATE 6-7-78
JWM

REVISED 5.5.78

PURDUM & JESCHKE
CONSULTING ENGINEERS
LAND SURVEYORS

1023 North Calvert Street
Baltimore, Maryland 21202 301/837-0194

APPROVED FOR PUBLIC WORKS, PUBLIC SERVICE, STORM
DRAINAGE, STREET LIGHTS, HOWARD COUNTY
DEPARTMENT OF PUBLIC WORKS

Richard E. Brudenblage 7/25/78
DIRECTOR

W. J. 1/16/78 7-24-78
CHIEF SUPERVISOR

APPROVED: HOWARD COUNTY OFFICE OF PLANNING AND ZONING

Thomas L. Hamigh 7-31-78
PLANNING DIRECTOR

John W. Mendenhall 7-31-78
CHIEF DIVISION OF LAND DEVELOPMENT

DESIGNED FOR PUBLIC WORKS, PUBLIC SERVICE, STORM
DRAINAGE, STREET LIGHTS, HOWARD COUNTY DEPARTMENT

Jayman 7-28-78
LANDSCAPE ARCHITECT

HOWARD COUNTY DEPARTMENT OF PUBLIC WORKS
PROJECT C-5-0120

HOWARD COUNTY DETENTION CENTERS
LANDSCAPE PLAN

TALCOIL ON
DISTRICT

SHEET 7 OF 7