

APPROVED FOR PUBLIC WATER & PUBLIC SEWER
COUNTY HEALTH DEPARTMENT

Jogahn Boyer 3-10-80
COUNTY HEALTH OFFICER DATE

APPROVED HOWARD COUNTY OFFICE OF PLANNING & ZONING

Donald Hamig 3-12-80
PLANNING DIRECTOR DATE

Phillip Marchman 3-11-80
CHIEF DIVISION OF LAND DEVELOPMENT DATE

APPROVED FOR PUBLIC WATER, PUBLIC SEWER, STORM DRAIN SYSTEMS & ROADS
HOWARD COUNTY DEPARTMENT OF PUBLIC WORKS

Henry F. Nemaj 3-7-80
DIRECTOR DATE

Richard A. Jones 3-7-80
CHIEF BUREAU OF ENGINEERING DATE

ENGINEER'S CERTIFICATE
I HEREBY CERTIFY THAT THIS PLAN FOR EROSION & SEDIMENT CONTROL REPRESENTS A PRACTICAL & WORKABLE PLAN BASED ON MY PERSONAL KNOWLEDGE OF THE SITE CONDITIONS & THAT IT WAS PREPARED IN ACCORDANCE WITH THE REQUIREMENTS OF THE HOWARD SOIL CONSERVATION DISTRICT.

Walter Park
WALTER PARK

DEVELOPER'S CERTIFICATE
I HEREBY CERTIFY THAT ALL DEVELOPMENT AND/OR CONSTRUCTION WILL BE DONE ACCORDING TO THIS PLAN OF DEVELOPMENT AND PLAN FOR EROSION & SEDIMENT CONTROL. I WILL MAINTAIN PERIODIC ON-SITE INSPECTION BY THE HO SOIL CONSERVATION DISTRICT OR THEIR AUTHORIZED AGENTS AS ARE DEEMED NECESSARY. DIVISION FROM THIS PLAN WILL NOT BE MADE UNLESS AUTHORIZED BY THE HO SOIL CONSERVATION DISTRICT.

RICHARD A. JONES

REVISED FOR HO SOIL CONSERVATION DISTRICT'S REVIEW & TECHNICAL RECOMMENDATIONS

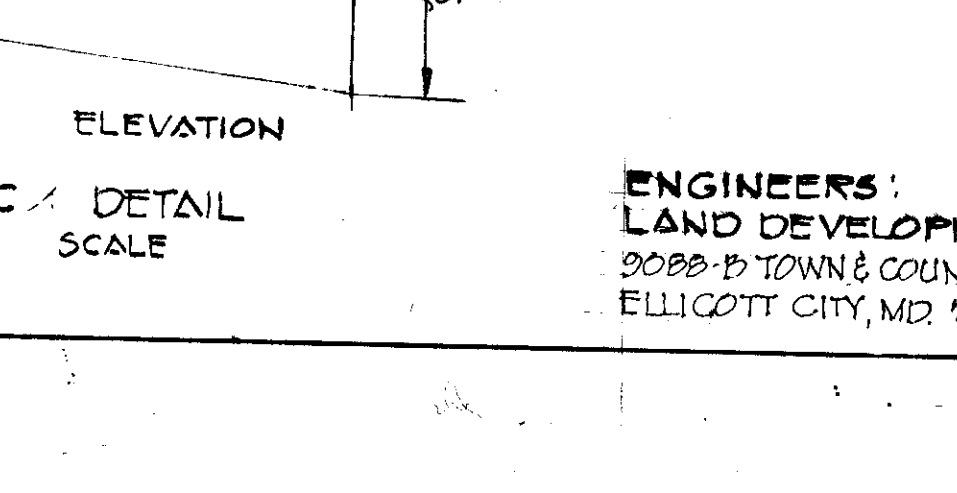
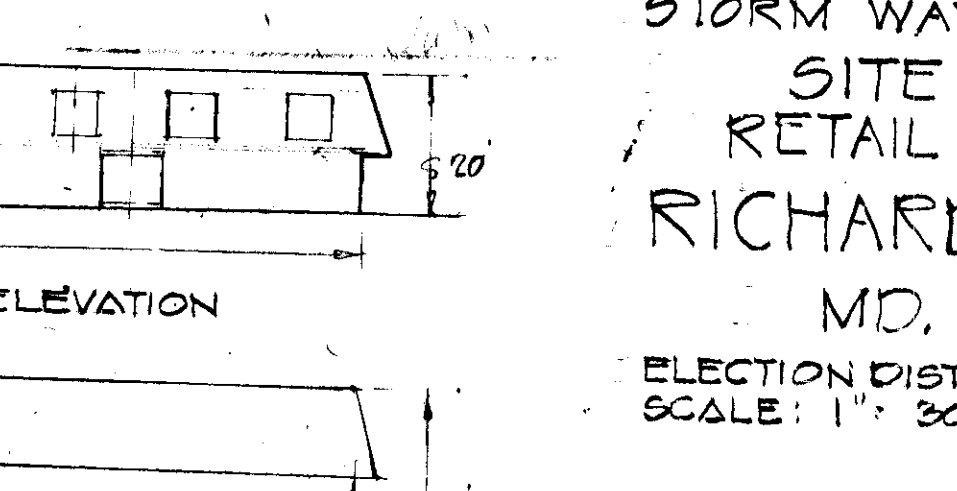
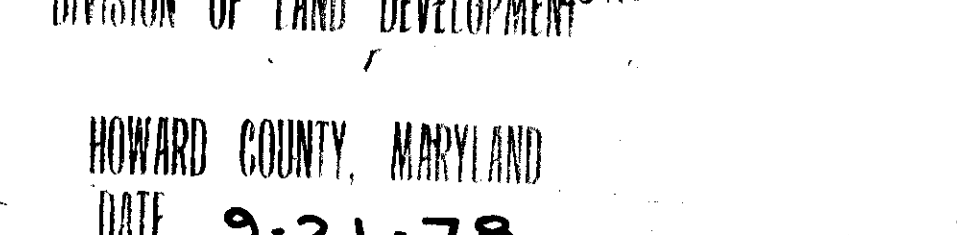
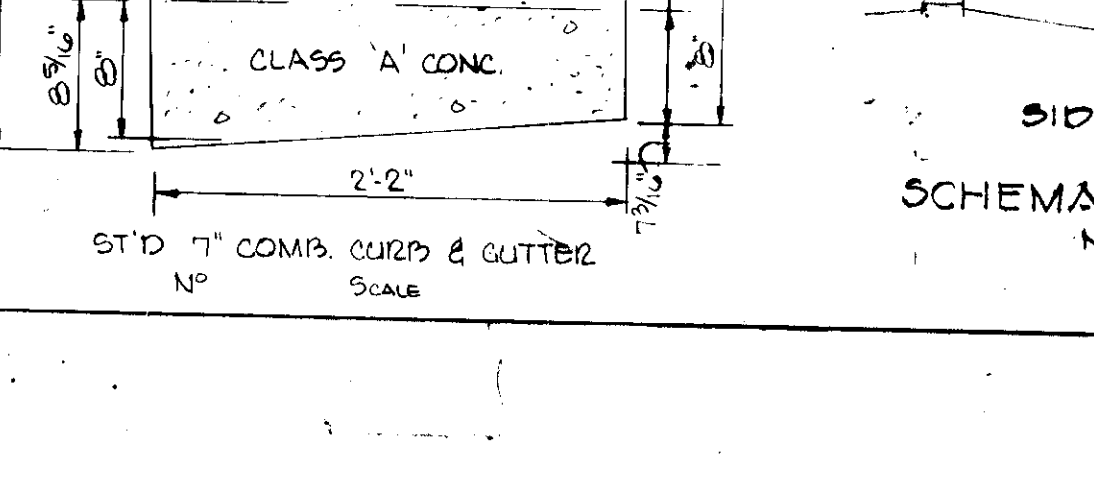
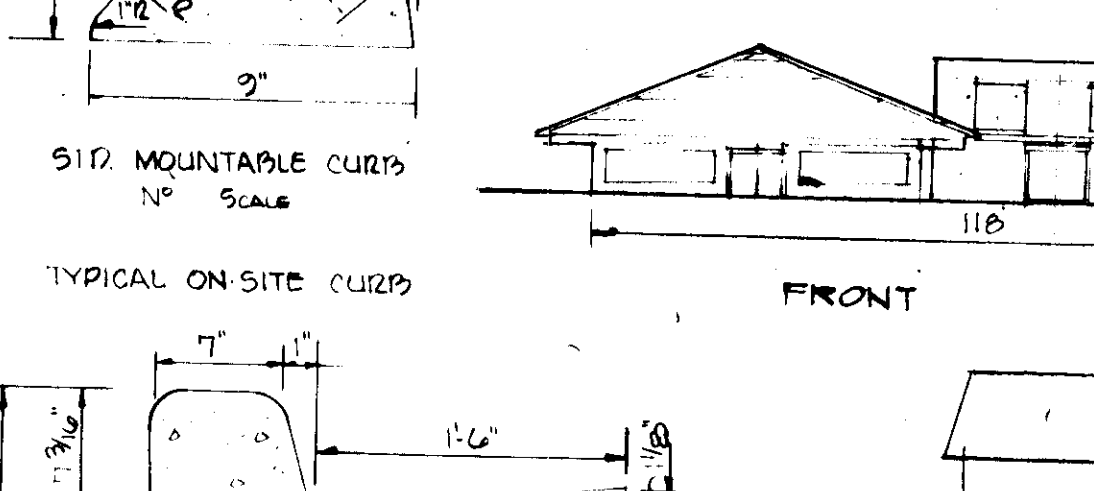
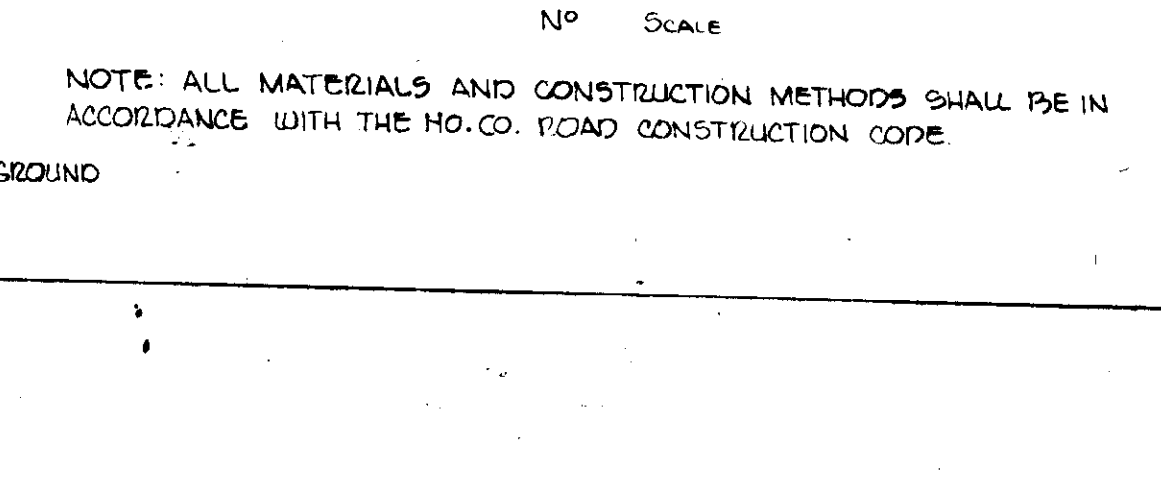
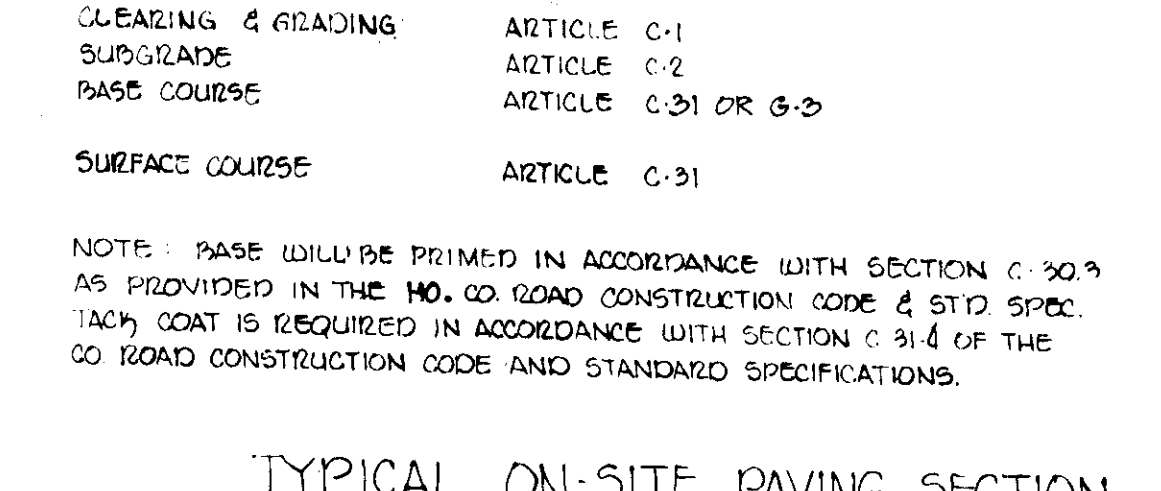
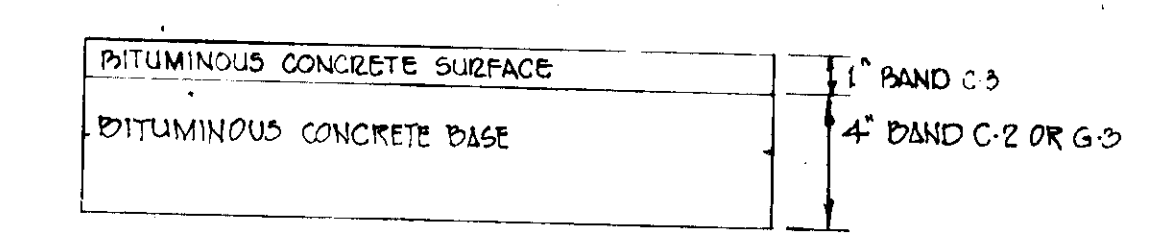
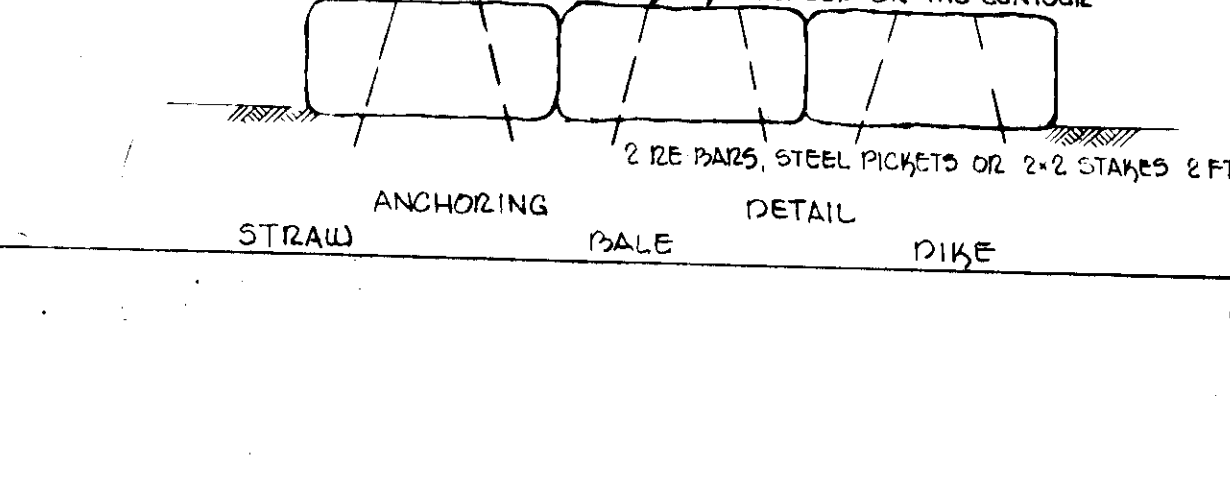
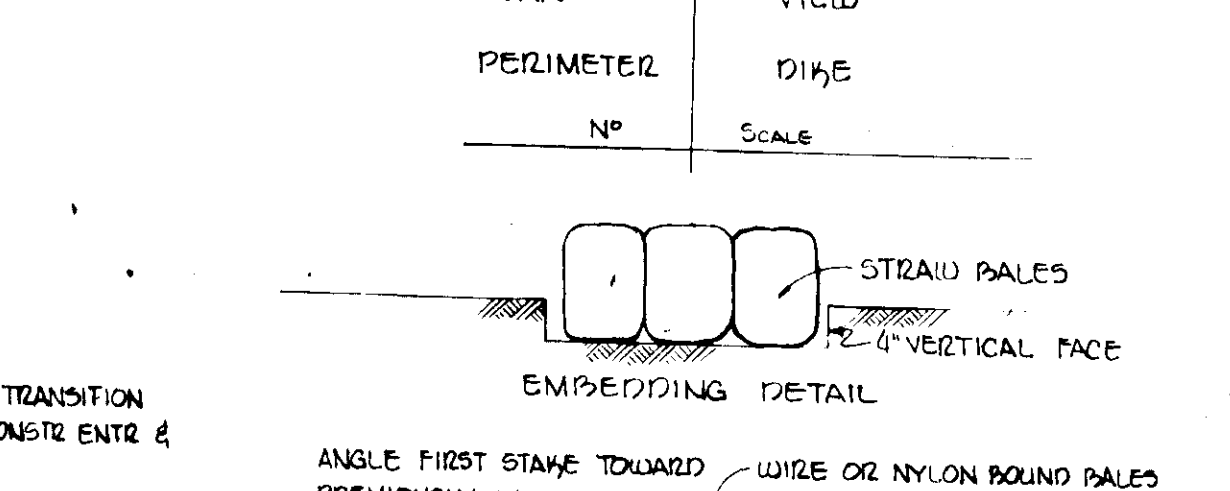
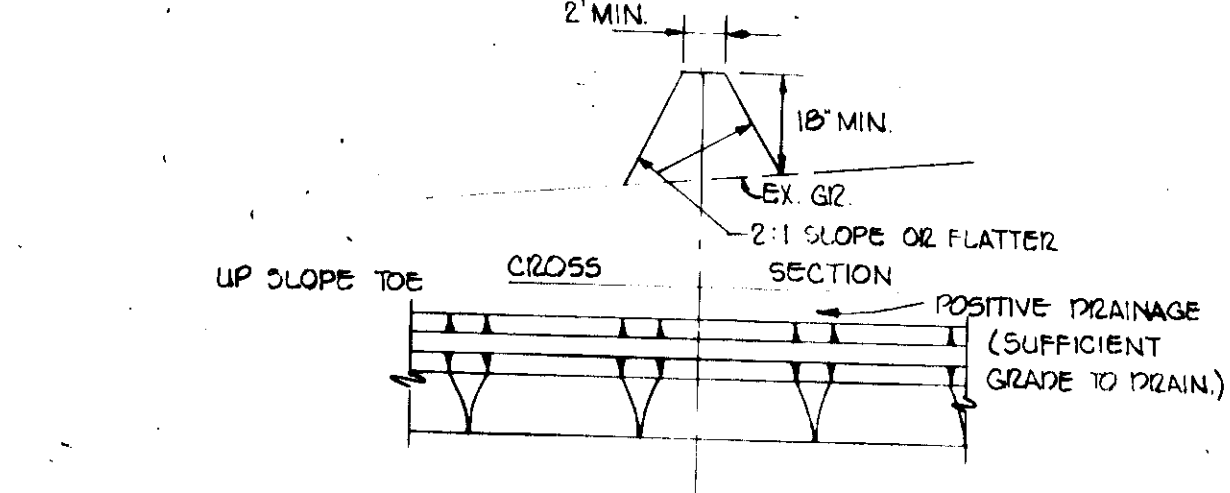
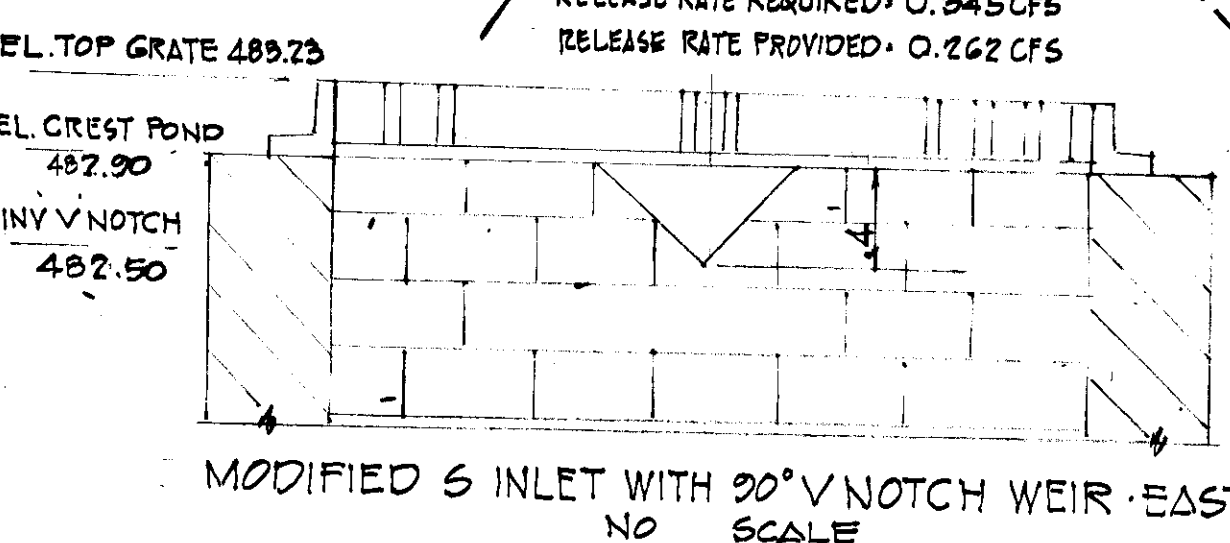
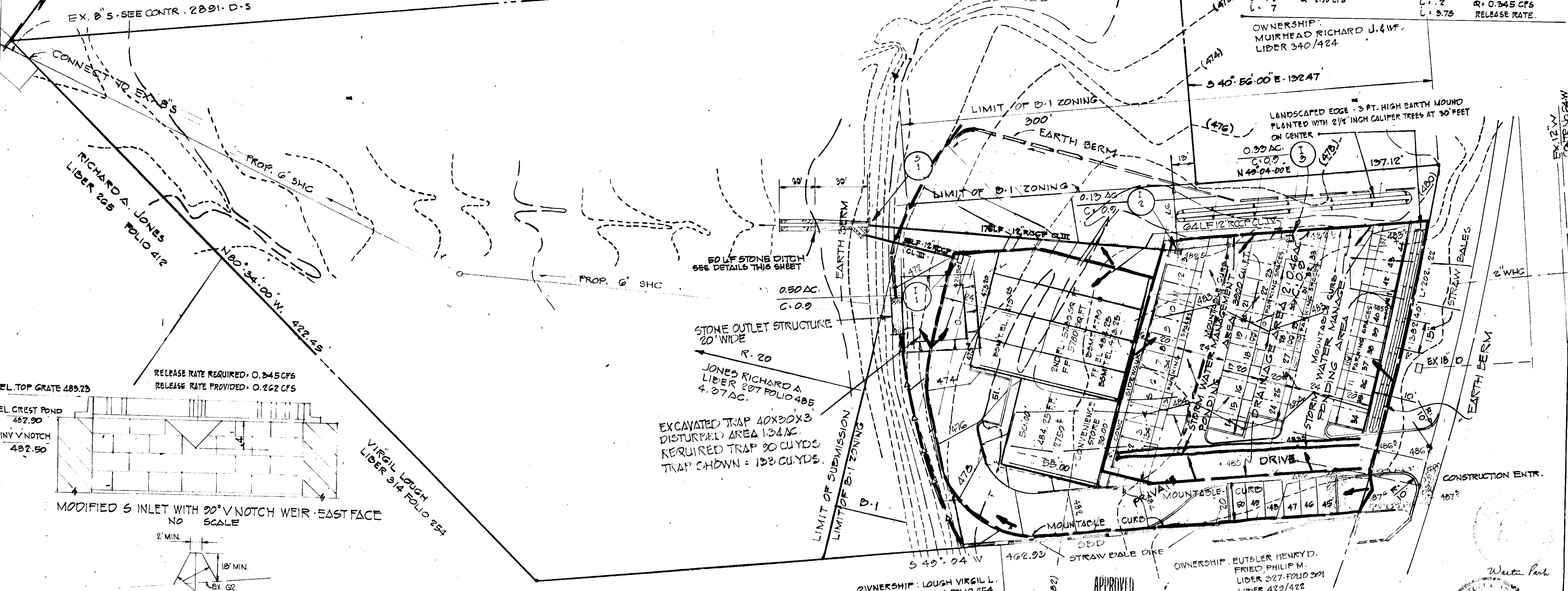
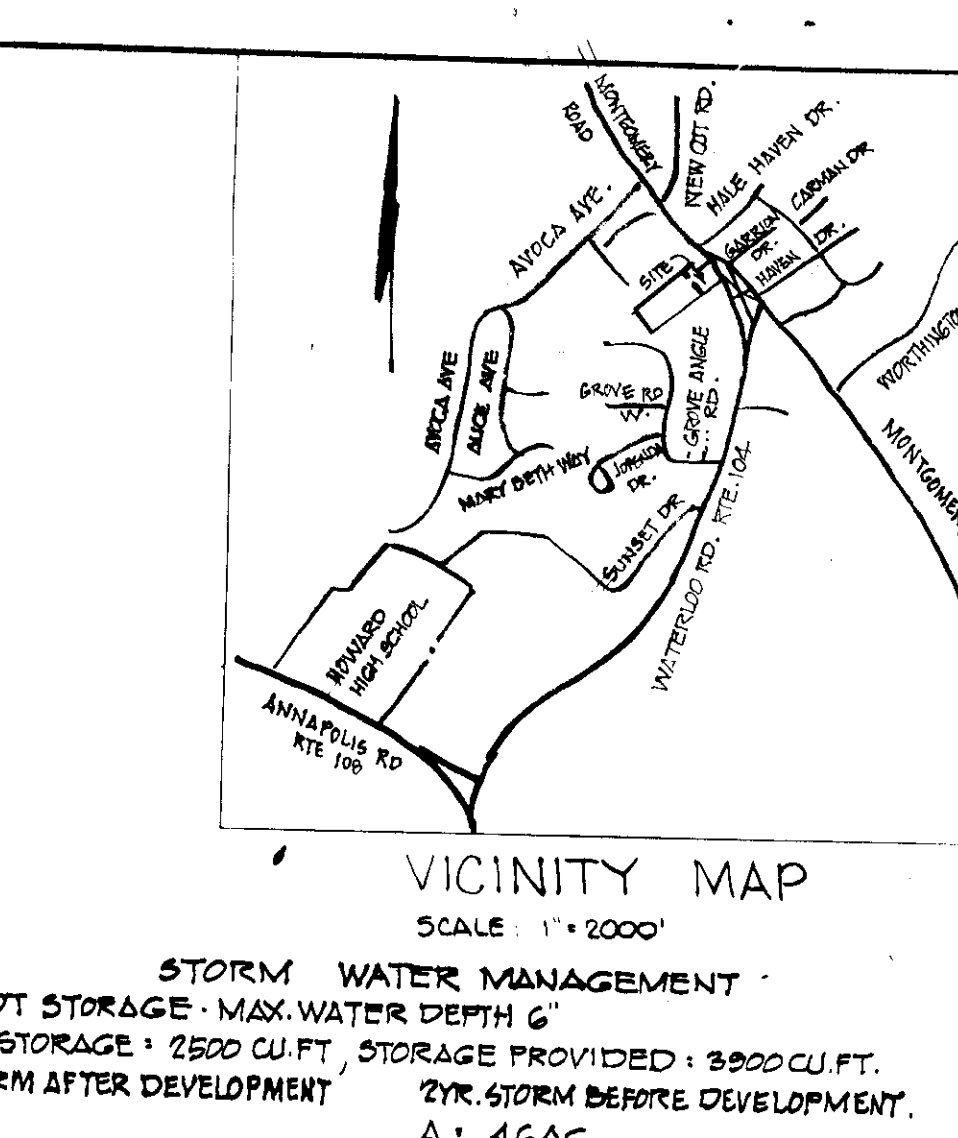
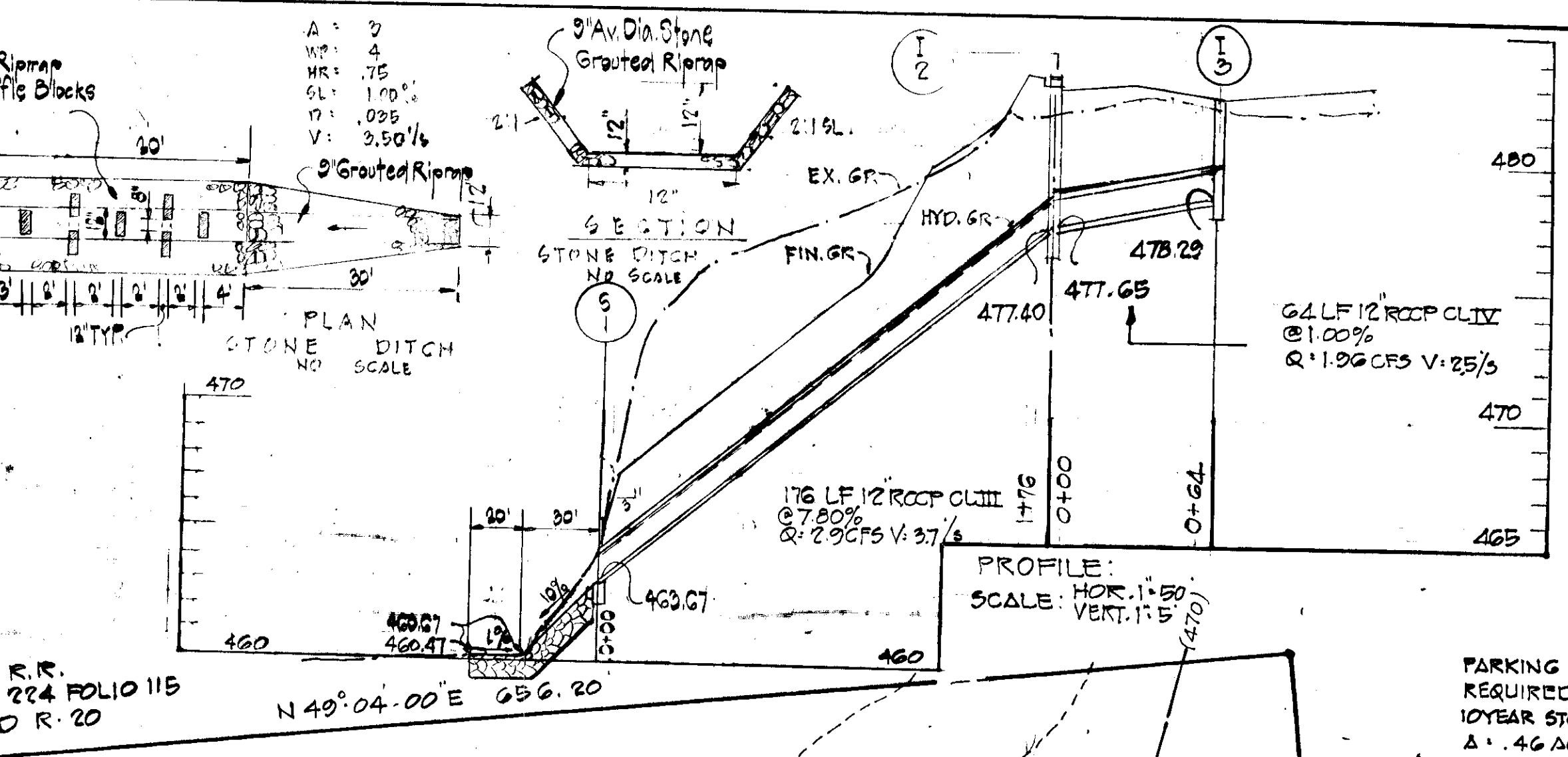
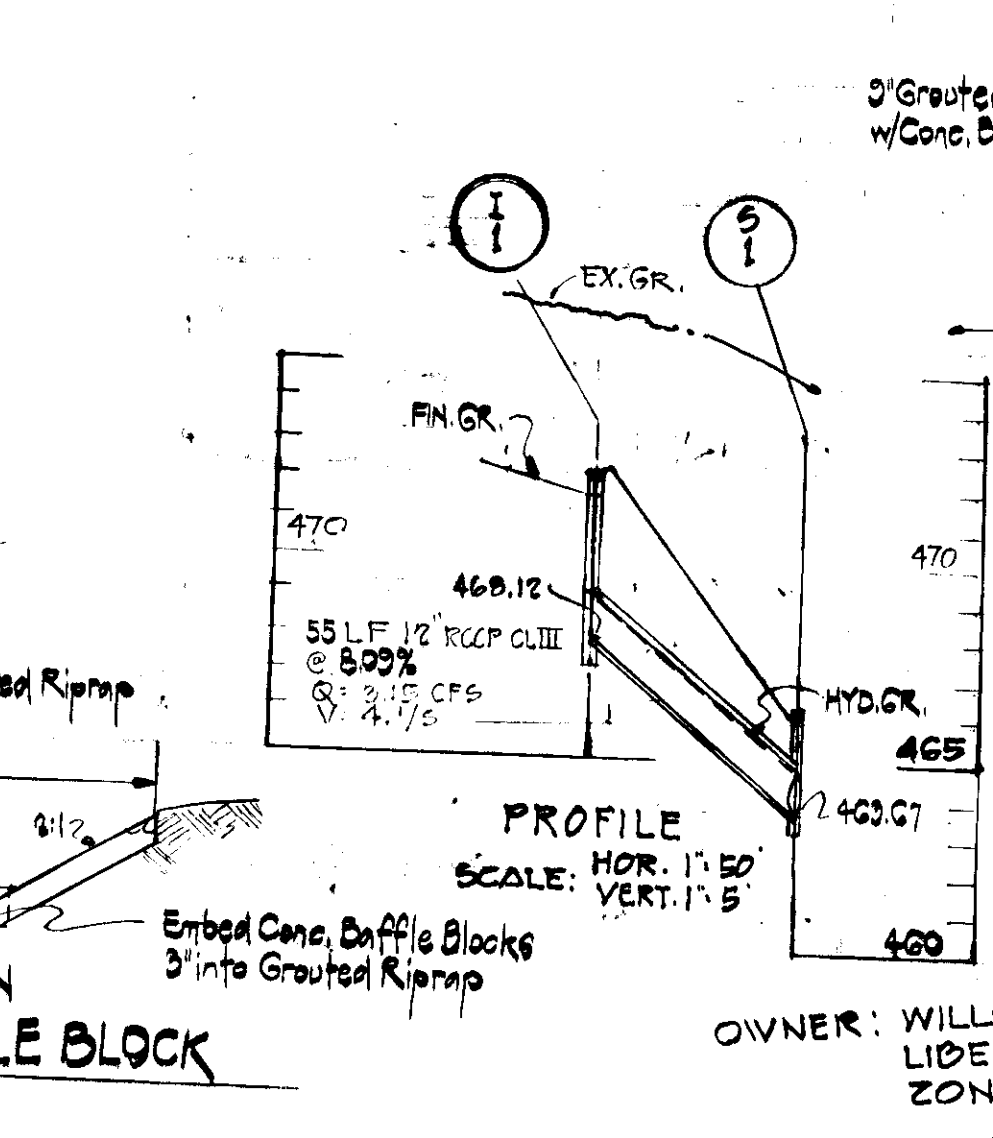
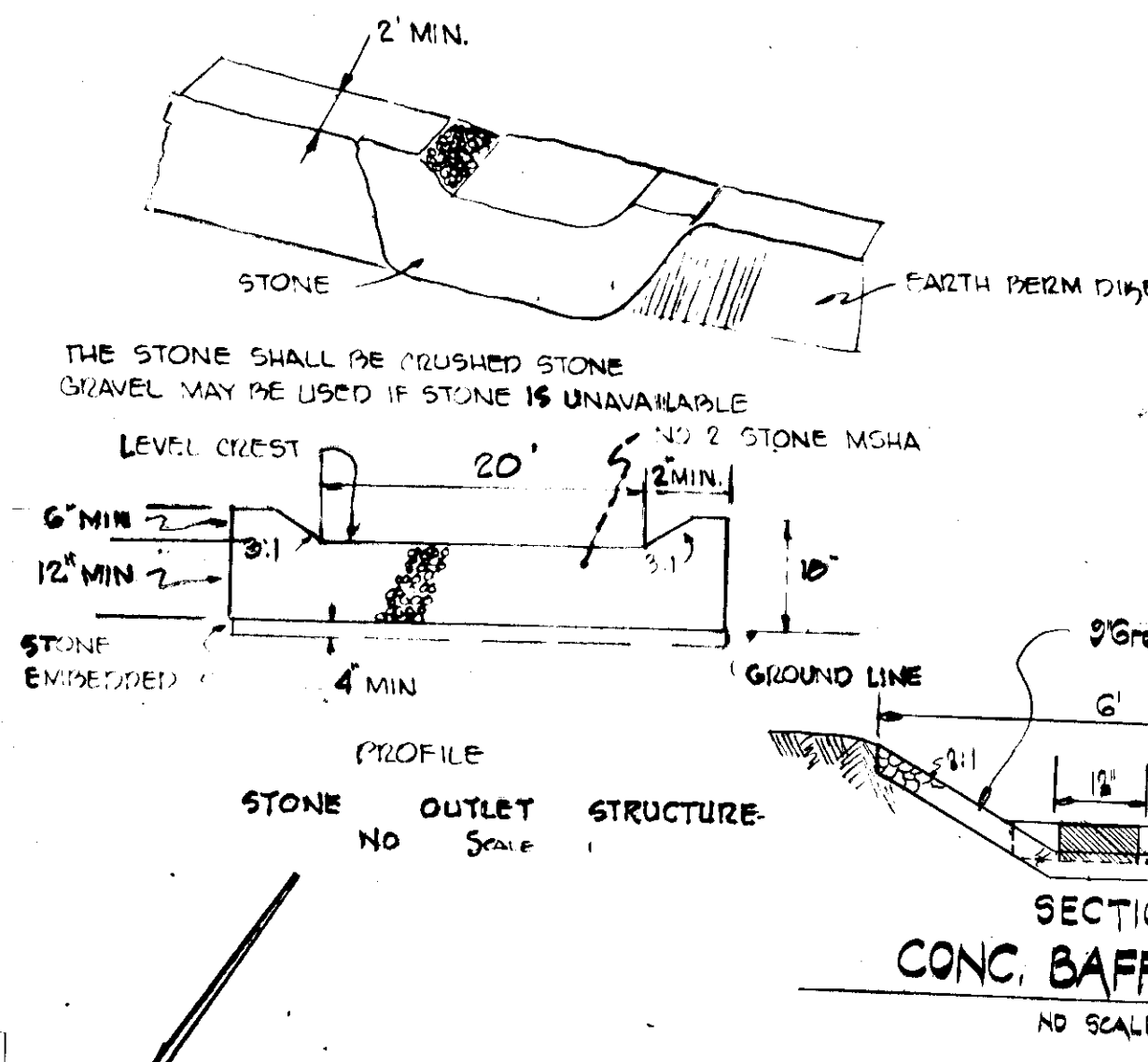
Wm. J. Bundetto 10/3/78
HO SOIL CONSERVATION SERVICE DATE

THIS DEVELOPMENT PLAN IS APPROVED FOR SOIL EROSION AND SEDIMENT CONTROL BY THE HOWARD SOIL CONSERVATION SERVICE.

Robert W. Zehn 10/3/78
HO SOIL CONSERVATION DISTRICT DATE

ORDINANCE CONTROLS NOTES:
1. OBTAIN GRADING PERMIT
2. THE HO SOIL CONSERVATION DISTRICT INSPECTIONS & PERMITS SHALL BE GIVEN PROMPT NOTICE PRIOR TO ANY GRADING.
3. ALL SEDIMENT CONTROL MEASURES SHOWN ON THIS PLAN SHALL BE OTHERWISE IDENTIFIED SHALL BE INSTALLED IN ACCORDANCE WITH THE DISTRICT'S SPECIFICATIONS.
4. ALL SLOPES SHALL BE MAX 3:1
5. GRADING: THE STABILIZATION OF ALL AREAS TO BE IMPROVED, THE AREA OF SEDIMENT CONTROL MEASURES MAY BE REMOVED & MADE TO THE FINAL GRADE SHOULD BE STABILIZED IMMEDIATELY.
6. IN THE EVENT OF EXCESS MATERIAL, EXCESS SHALL BE DISPOSED WITH A MAX SLOPE OF 3:1 IN AN AREA WHICH HAS BEEN CLEARED FOR THE SITE. EXCESS MATERIAL SHALL BE STABILIZED IN ACCORDANCE WITH DISTRICT SPECIFICATIONS.
7. SEDIMENT CONTROL MEASURES WILL NOT BE REMOVED UNTIL APPROVAL IS OBTAINED FROM HO SOIL CONSERVATION DISTRICT INSPECTION & LICENSE.
8. PERMANENT STABILIZATION SHALL APPLY

1000 LBS PER ACRE OF COVERED BY LUMINOUS LIMESTONE
1000 LBS PER ACRE OF 2:1:200 SUPER PHOSPHATE
1000 LBS PER ACRE OF 1/2:1:100 FERTILIZER
OR
1000 LBS PER ACRE OF NITROGEN FERTILIZER
OR
1000 LBS PER ACRE OF ANNUAL RYEGRASS
OR
1000 LBS PER ACRE OF AUGUST 1961 ONLY
MULCH 2 TONS PER ACRE MINIMUM HERBED WHEATSTRAW
TIE DOWN MULCH WITH 450 GAL PER ACRE OF LIQUID ASPHALT



STORM WATER MANAGEMENT
PARKING LOT STORAGE - MAX. WATER DEPTH 6"
REQUIRED STORAGE: 2800 CU. FT. STORAGE PROVIDED: 3800 CU. FT.
10 YEAR STORM AFTER DEVELOPMENT 2 YR. STORM BEFORE DEVELOPMENT
C: 1.46 AC. C: 1.46 AC.
L: 7 L: 7
Q: 1.96 CFS Q: 0.345 CFS
R: 25/3 RELEASE RATE

OWNERSHIP: MURHEAD RICHARD J. & WIFE
LIDER 340/424

LANDSCAPED EDGE - 3 FT. HIGH EARTH MOUND PLANTED WITH 2 1/2" INCH CALIPER TREES AT 30 FEET ON CENTER
0.30 AC.
C: 0.3
L: 7
N 49° 04' 00" E 192.47'

EXCAVATED TRAP 40' X 30' X 3'
DISTURBED AREA 134 AC.
REQUIRED TRAP 90 CU. YDS
TRAP CHOWN = 132 CU. YDS.

JONES RICHARD A
LIDER 207 FOLIO 485
4.27 AC.

OWNERSHIP: EUTSLER HENRY D.
FRIED, PHILIP M.
LIDER 327 FOLIO 291
LIDER 429/422

APPROVED
DIVISION OF LAND DEVELOPMENT
HOWARD COUNTY, MARYLAND
DATE 9-21-78

DRAINAGE AREA MAP
SEDIMENT CONTROL & STORM WATER MANAGEMENT PLAN
SITE DEVELOPMENT PLAN
RETAIL SALES AND OFFICES
RICHARD A. JONES PROPERTY
MD, ROUTE 104
ELECTION DISTRICT 2
SCALE: 1" = 30'
HO. CO. MD.
MARCH 21, 1978

ENGINEERS:
LAND DEVELOPMENT CONSULTANTS
3088 B TOWN & COUNTRY BLVD.
ELLCOTT CITY, MD 21043 465-8518

SHEET 2 OF 3

SDP-78-103

APPROVED FOR PUBLIC WATER AND PUBLIC SEWER
COUNTY HEALTH DEPARTMENT

John Boyer
COUNTY HEALTH OFFICER

3-10-80
DATE

APPROVED: HOWARD COUNTY OFFICE OF PLANNING AND ZONING

Thomas J. Hennigh
PLANNING DIRECTOR

3-12-80
DATE

Paul M. Mendenhall
CHIEF DIVISION OF LAND DEVELOPMENT

2-11-80
DATE

APPROVED FOR PUBLIC WATER & PUBLIC SEWER, STORM DRAIN SYSTEMS & ROADS
HOWARD COUNTY DEPARTMENT OF PUBLIC WORKS

Boyd F. Nemmy
DIRECTOR

3-7-80
DATE

William E. Ray
CHIEF BUREAU OF ENGINEERING

3-7-80
DATE

50.00	2750 RETAIL SALES	13.75 PARKING SPACES
18.0	1550 SERVICE	7.55 SPACES
18.0	1800 SERVICE	7.55 SPACES
18.0	1800 SERVICE	7.55 SPACES
18.0	1800 OFFICES	7.55 SPACES
65.00	1480 OFFICES	7.55 SPACES

PLAN 1ST FLOOR

18.0	1550 OFFICE	3 PERSONS WORKING
18.0	1800 OFFICE	3 PERSONS WORKING
18.0	1800 OFFICE	3 PERSONS WORKING
18.0	1800 OFFICE	3 PERSONS WORKING
13.0	1480 OFFICE	3 PERSONS WORKING

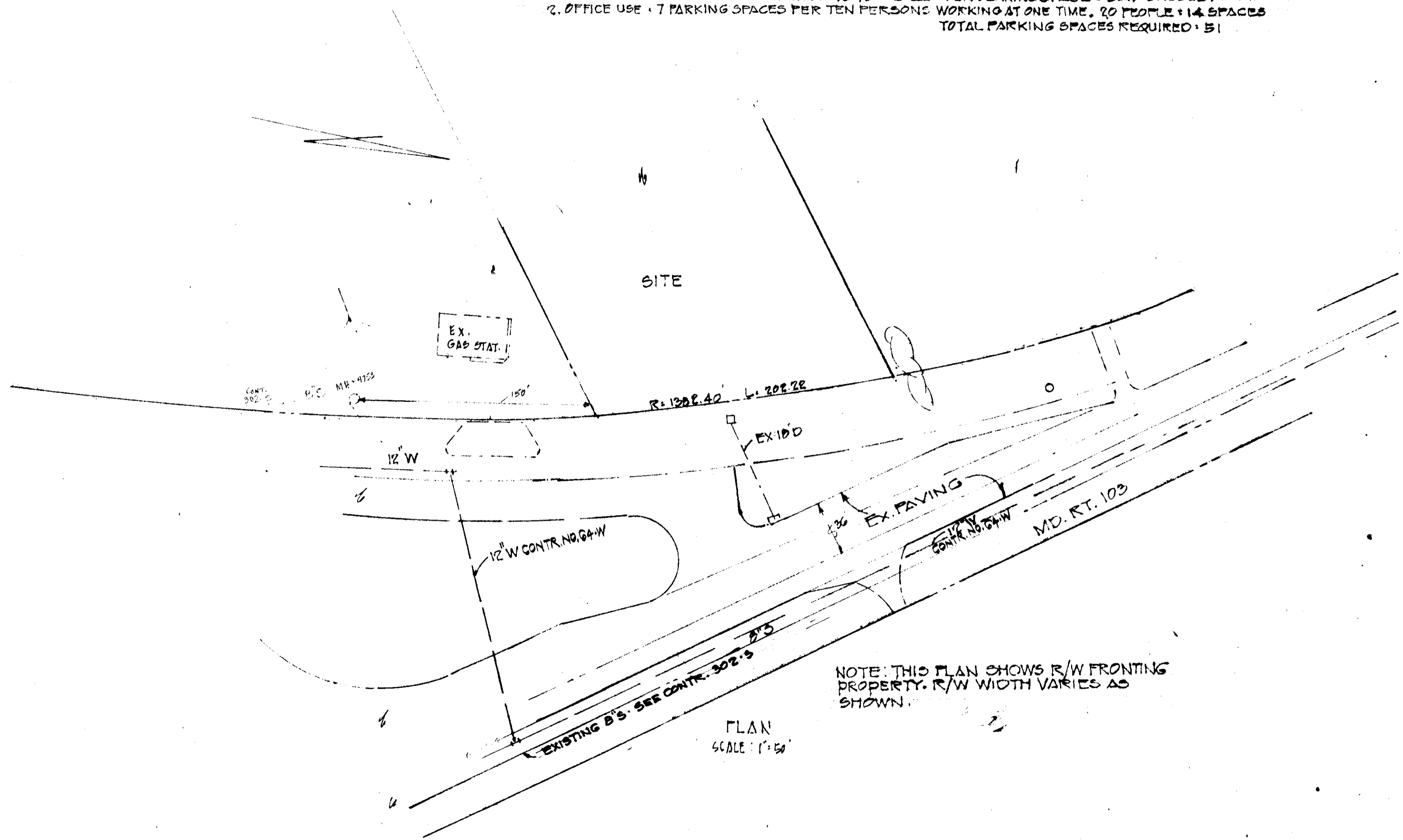
PLAN 2ND FLOOR

18.0	1800 MECH. RM.	STORAGE
18.0	1800 OFFICE	3 PERSONS
18.0	1800 OFFICE	3 PERSONS
18.0	1800 OFFICE	3 PERSONS

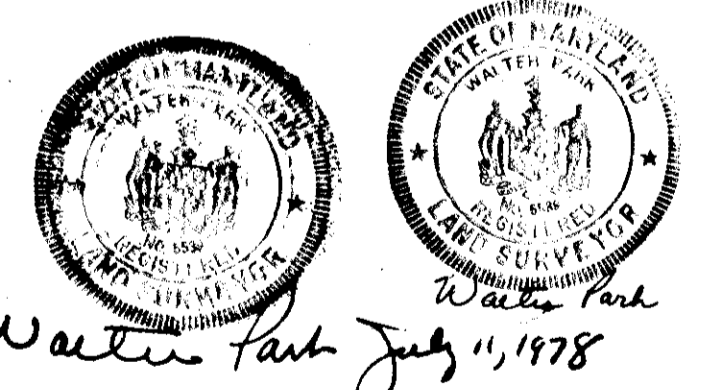
PLAN BSMT. LEVEL

FLOOR PLANS PROPOSED BUILDING
SCALE: 1" = 30'

PARKING ANALYSIS
PARKING REQUIRED
1. RETAIL SALES OR SERVICE BUSINESS 7340' x 220' PER PARKING SPACE: 25.7 SPACES.
2. OFFICE USE: 7 PARKING SPACES PER TEN PERSONS WORKING AT ONE TIME. 20 PEOPLE: 14 SPACES
TOTAL PARKING SPACES REQUIRED: 51



PLAN SCALE: 1" = 50'



APPROVED
DIVISION OF LAND DEVELOPMENT
HOWARD COUNTY, MARYLAND
DATE 9-21-78

DETAILS
RETAIL SALES AND OFFICES
RICHARD A. JONES PROPERTY
MD. ROUTE 104
ELECTION DISTR. 2 HO. CO. MD.
SCALE: 1" = 50' JUNE 23, 78

OWNER: RICHARD A. JONES
8440 GROVEANGLE RD.
ELLCOTT CITY, MD. 21043
465-0647

ENGINEERS:
LAND DEVELOPMENT CONSULTANTS
9088-D TOWN & COUNTRY BLVD.
ELLCOTT CITY, MD. 21042
465-8518

DETAILS		
SCALE: 1" = 50'	APPROVED BY:	DRAWN BY: JE
DATE: 6/20/78		REVISED:
SHEET 3 OF 3		DRAWING NUMBER: SDP-78-103