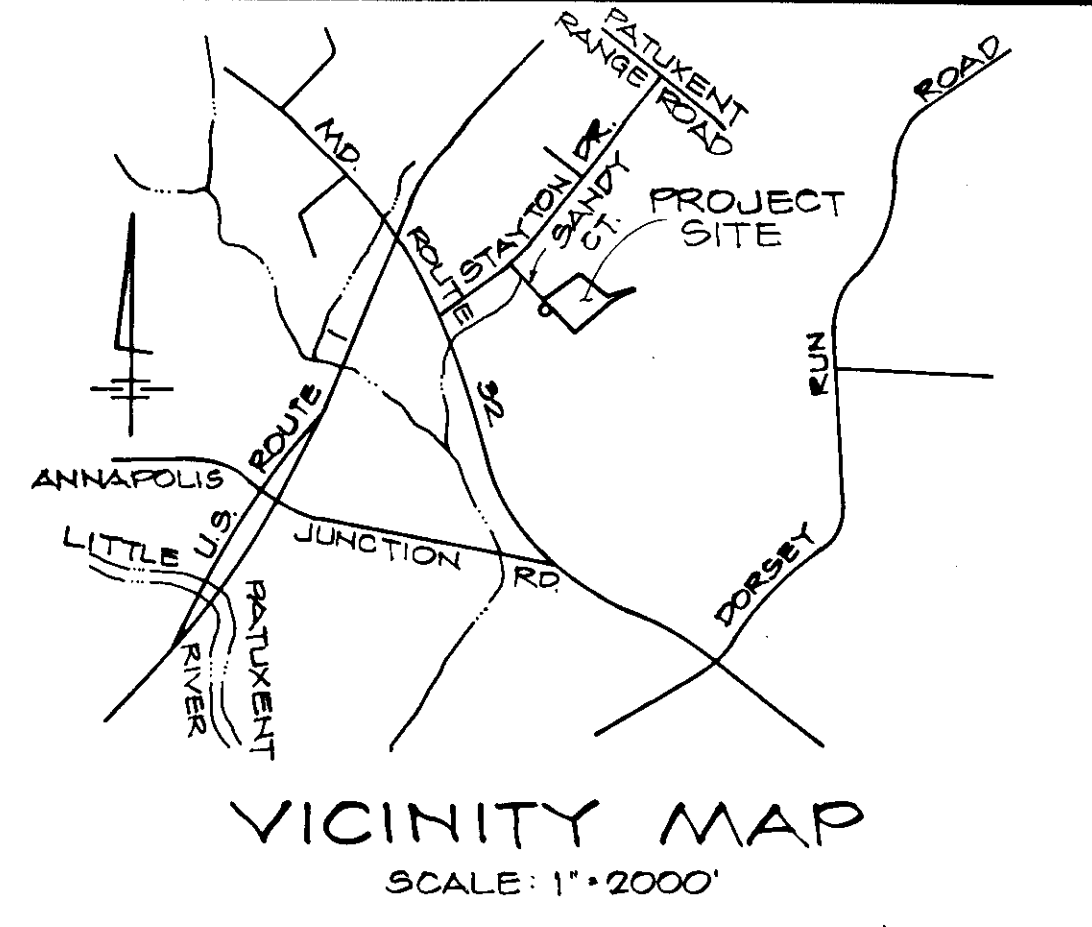


GENERAL NOTES

1. Topography furnished by others.
2. All work shall be performed in accordance with the Howard County Road Construction Code and Standard Specifications.
3. Lighting shown consists of 500 watt high pressure sodium flood lamps mounted 25 ft high and providing an average illumination of one foot candle.

SITE ANALYSIS

1. Area of parcel = 34.83 Ac. (151,719 sq. ft.)
2. Zoning = M-2
3. Phase I floor area = 49,128 sq. ft.
Phase II Future floor area = 11,600 sq. ft.
Total floor area = 60,728 sq. ft.
4. Parking required
 - Phase I
 - a. 8 warehousemen (1:2) = 2.5
 - b. 6 drivers (1:2) = 3.0
 - c. 9 office personnel (7:10) = 6.3
 - d. 11 salesmen (7:10) = 7.7
 - e. 750 sq. ft. showroom (1:200) = 3.8
 - Phase II Future
 - a. 2 warehousemen (1:2) = 1.0
5. Total parking required = 24.3 spaces
6. Parking provided = 32 spaces
7. Site coverage:
 - a. Building (Incl. future) 1.25 Ac. = 3.6%
 - b. Paving 0.60 Ac. = 20.1%
 - c. Open space 1.54 Ac. = 44.4%



APPROVED: For public water, public sewerage and storm drainage systems and roads.

HOWARD COUNTY DEPT. OF PUBLIC WORKS
 Robert E. Gruendinger 6-23-78
 DIRECTOR DATE

APPROVED: For public water and public sewerage systems.

HOWARD COUNTY HEALTH DEPARTMENT
 J. J. Brown 6-27-78
 COUNTY HEALTH OFFICER DATE

APPROVED: Howard County Office of Planning and Zoning

Thomas J. James 6-29-78
 PLANNING DIRECTOR DATE

APPROVED: Howard County Office of Planning and Zoning

John W. Mendenhall 6-29-78
 CHIEF, DIV. OF LAND DEVELOP. DATE

APPROVED
 DIVISION OF LAND DEVELOPMENT
 HOWARD COUNTY, MARYLAND
 DATE 5-29-78

CURVE DATA
 RAILROAD SIDING
 D: 18' 43.31'
 IR: 478.04'
 L: 156.34'
 T: 78.88'
 CHD: 558' 43.53" W
 153.65'

CERTIFICATION BY THE DEVELOPER

I CERTIFY THAT ALL DEVELOPMENT AND/OR CONSTRUCTION WILL BE DONE ACCORDING TO THIS PLAN OF DEVELOPMENT AND PLAN OF SILT AND SEDIMENT CONTROL AND I ALSO AUTHORIZE PERIODIC ON SITE INSPECTION BY THE HOWARD SOIL CONSERVATION DISTRICT OR THEIR AUTHORIZED AGENTS AS DEEMED NECESSARY. DEVIATION FROM THIS PLAN WILL NOT BE MADE UNLESS AUTHORIZED BY THE HOWARD SOIL CONSERVATION DISTRICT.

Signature of Developer: *Edward Attner* Pres. DATE: 3/31/78

DEVELOPER
 ACME PAPER AND SUPPLY CO. INC.
 427 SOUTH SHARP ST.
 BALTIMORE, MARYLAND 21201

OWNER
 BWIP INC.
 110 WEST ROAD
 BALTIMORE, MD. 21204

DAFT - McCUNE - WALKER INC.
 LAND PLANNING CONSULTANTS
 LANDSCAPE ARCHITECTS
 ENGINEERS
 530 EAST JOPPA ROAD
 TOWSON, MD. 21284
 TELEPHONE: 301-286-3333

ACME PAPER & SUPPLY CO. INC. WAREHOUSE
 SITE DEVELOPMENT PLAN
 BALTIMORE WASHINGTON INDUSTRIAL PARK
 BLOCK "C" PARCEL "F"
 PLAT NUMBER 3026
 TAX MAP 48
 ELECTION DISTRICT NO 6
 HOWARD COUNTY, MD
 SHEET 1 OF 4

DATE	REVISIONS
5-29-78	REVISED PLAN, COUNTY ENGINEERING

SCALE: 1" = 30'

JOB ORDER NO. B-7810

ISSUE DATE April 3, 1978

SDP-78-92

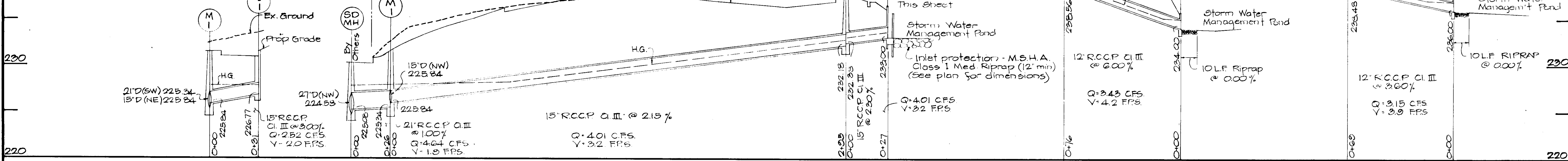
CERTIFICATION BY THE DEVELOPER
 I CERTIFY THAT ALL DEVELOPMENT AND/OR CONSTRUCTION WILL BE DONE ACCORDING TO THIS PLAN OF DEVELOPMENT AND PLAN OF SILT AND SEDIMENT CONTROL AND I ALSO AUTHORIZE PERIODIC ON-SITE INSPECTION BY THE HOWARD SOIL CONSERVATION DISTRICT OR THEIR AGENTS AS DEEMED NECESSARY. DEVIATION FROM THIS PLAN WILL NOT BE MADE UNLESS AUTHORIZED BY THE HOWARD SOIL CONSERVATION DISTRICT.

Edward Altman 5/5/78
 SIGNATURE OF DEVELOPER DATE

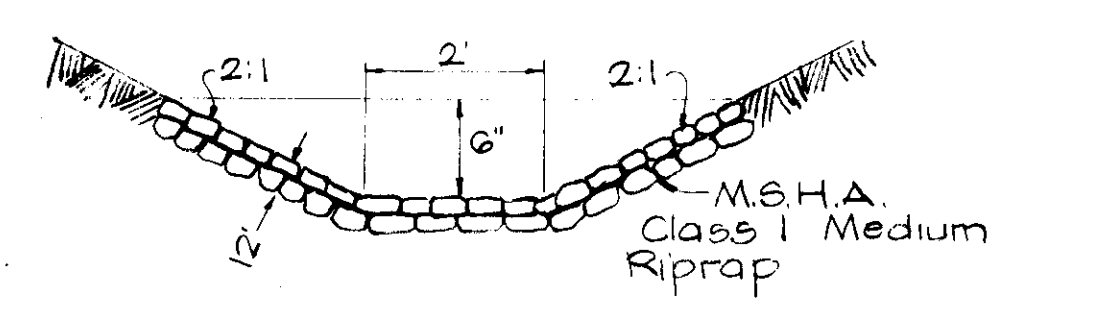
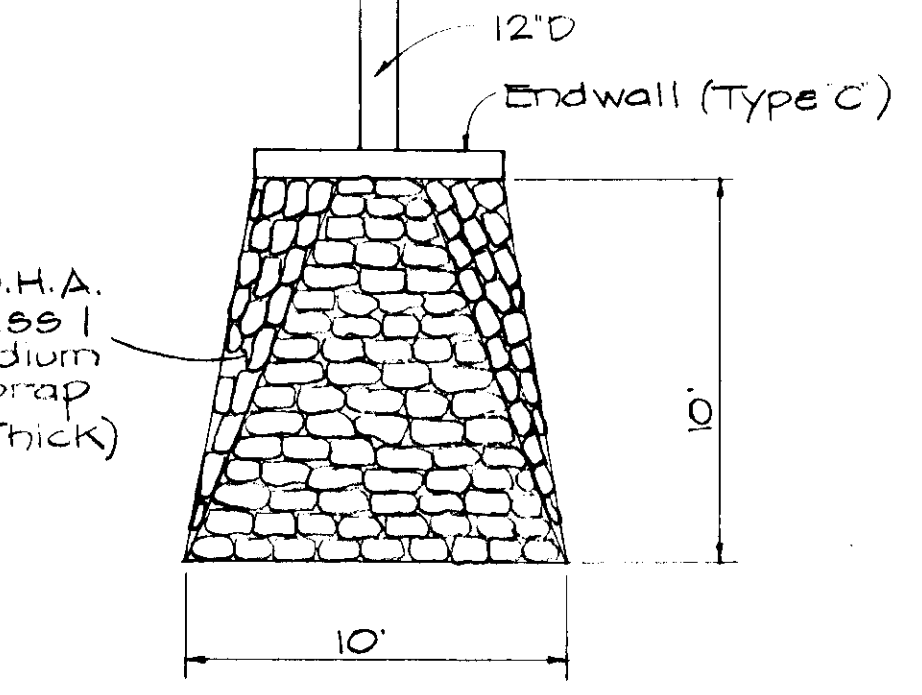
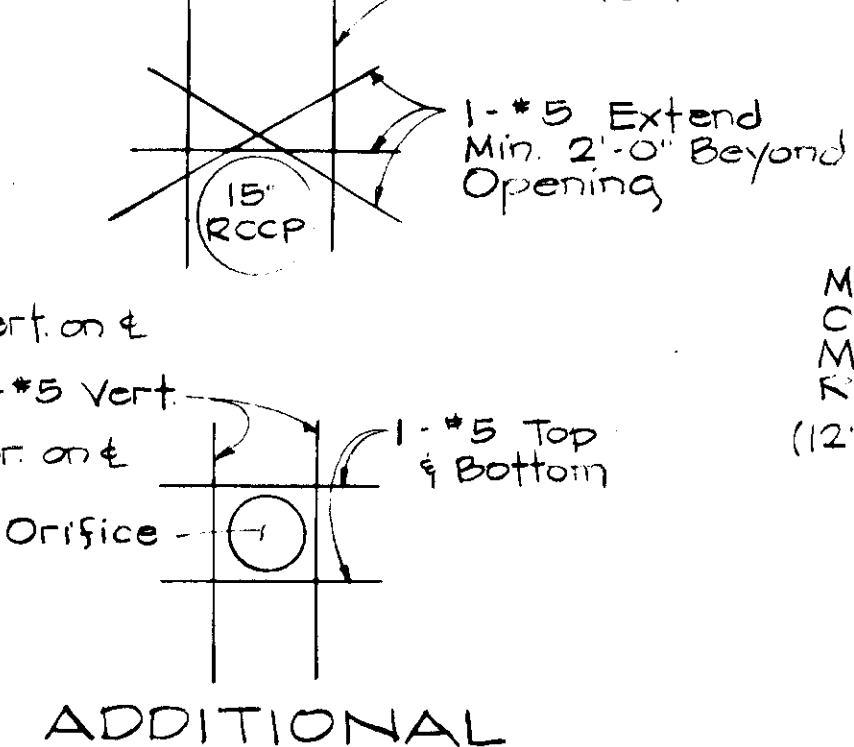
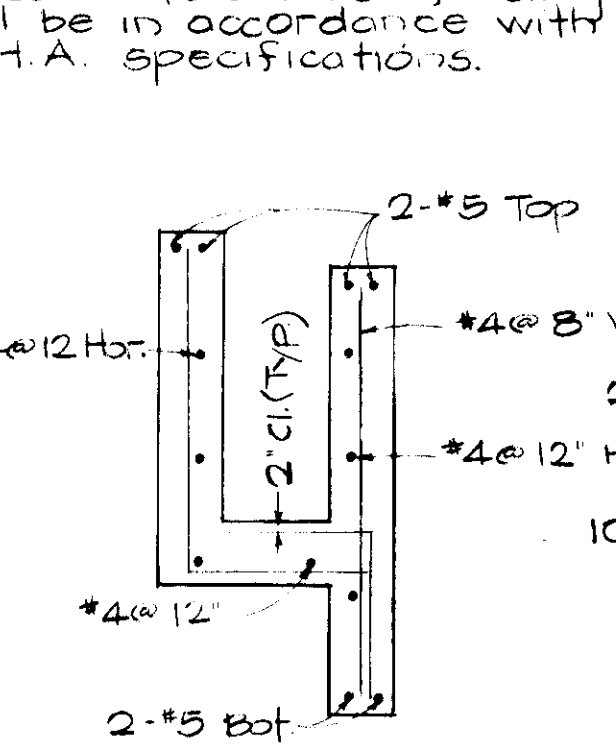
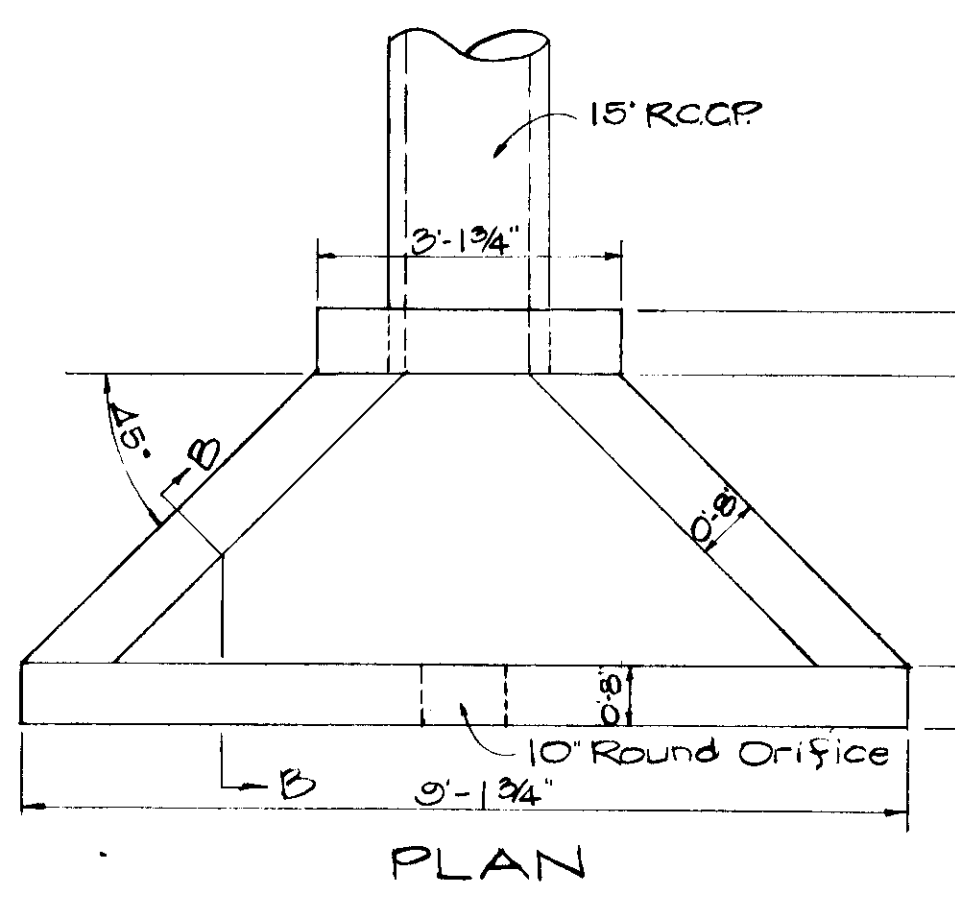
CERTIFICATION BY THE ENGINEER
 I CERTIFY THAT THIS PLAN FOR EROSION AND SEDIMENT CONTROL REPRESENTS A PRACTICAL AND WORKABLE PLAN BASED ON MY PERSONAL KNOWLEDGE OF THE SITE CONDITIONS AND THAT IT WAS PREPARED IN ACCORDANCE WITH THE REQUIREMENTS OF THE HOWARD SOIL CONSERVATION DISTRICT.

William J. Deter 5/5/78
 DATE

PROFILES
 Scale: Hor. 1"=30' Vert. 1"=5'



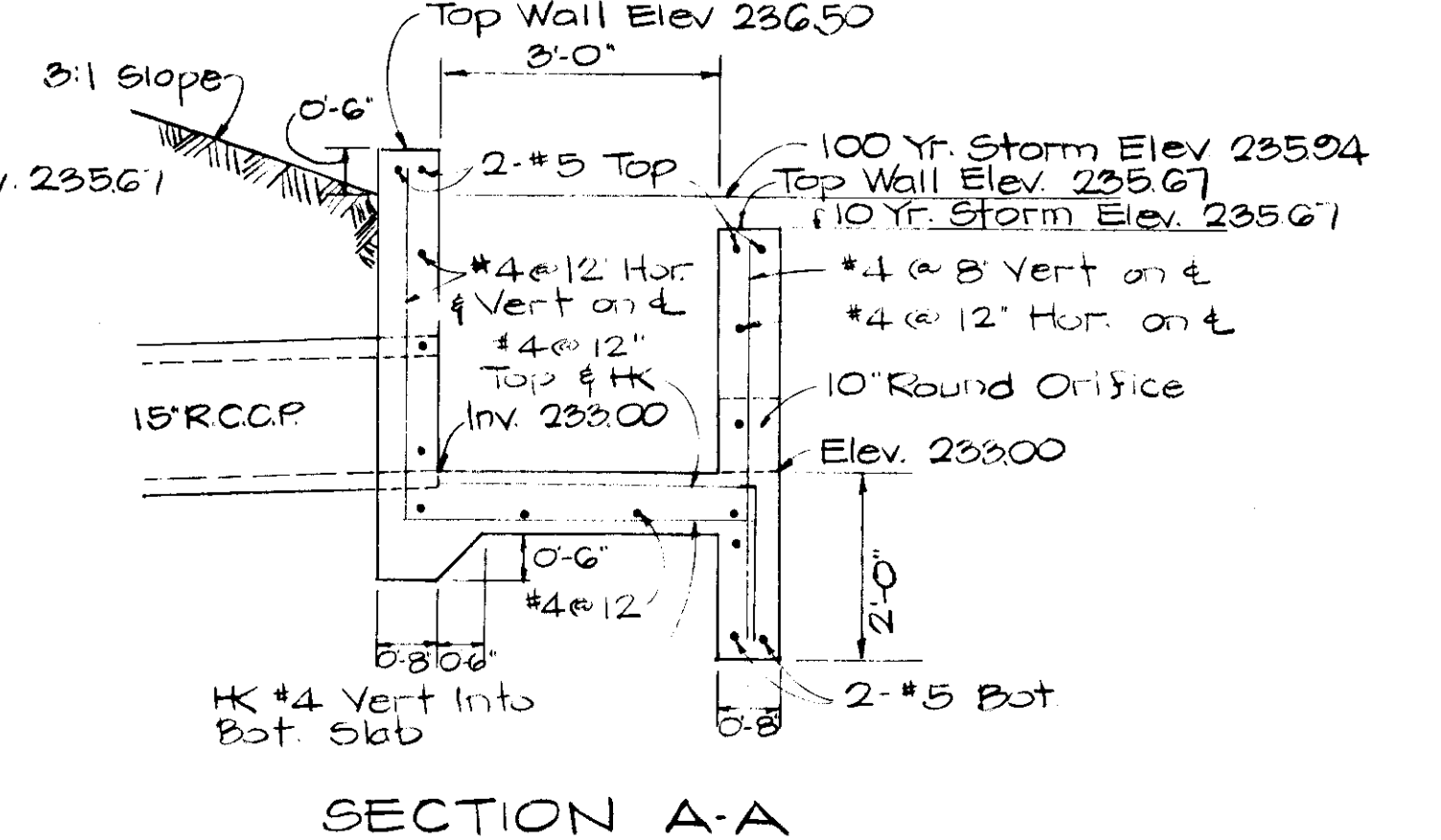
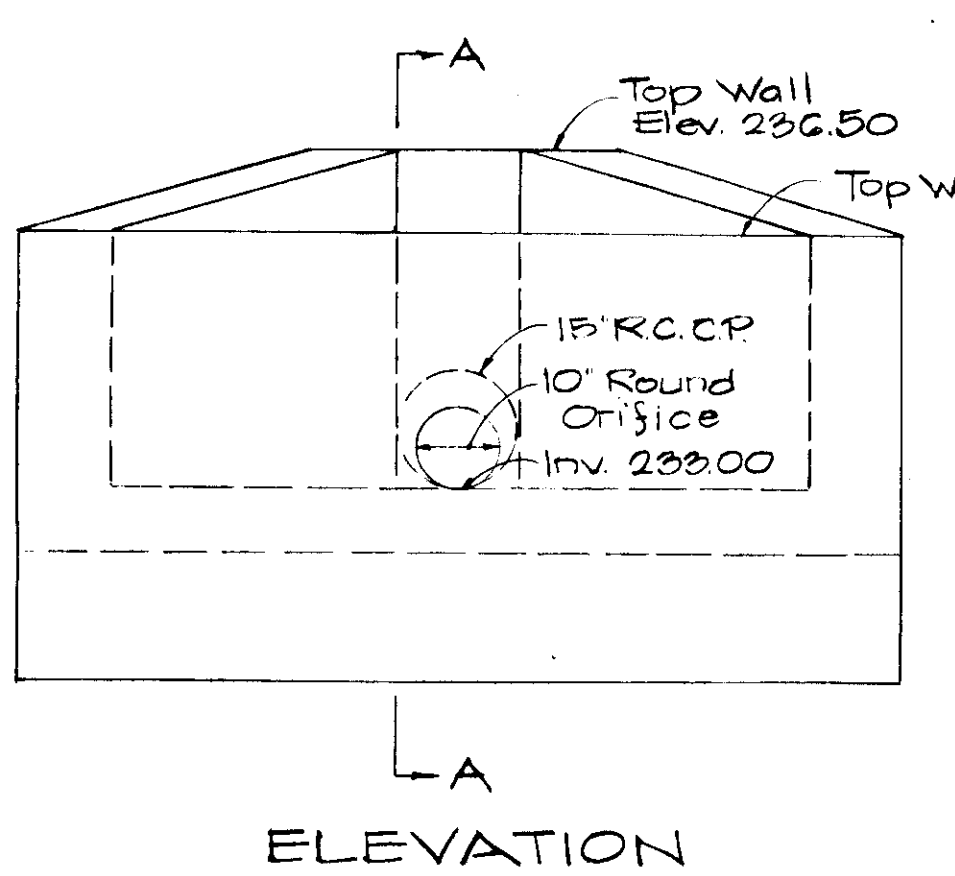
All concrete and reinforcing shall be in accordance with M.S.H.A. specifications.



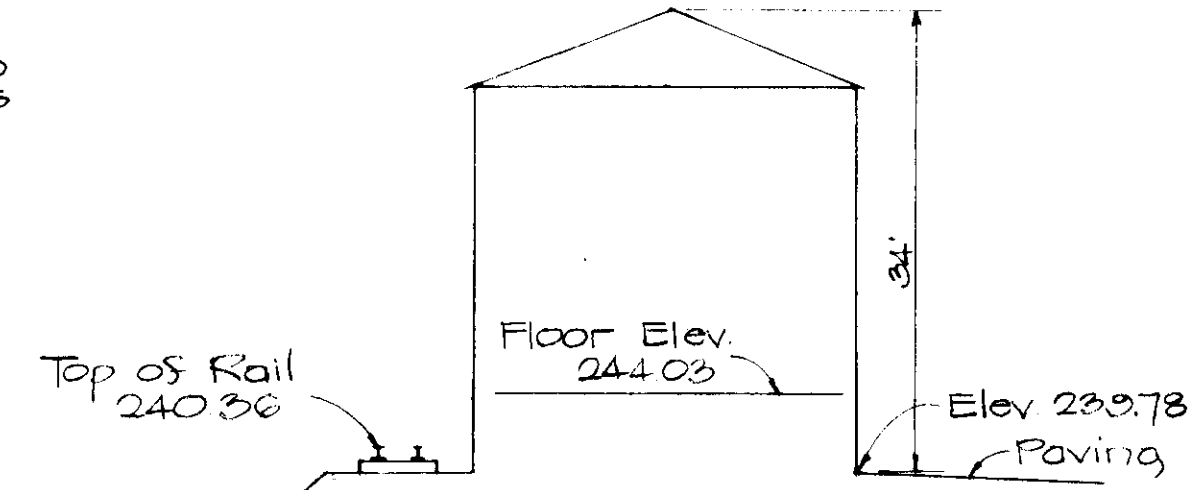
RIPRAP CHANNEL DETAIL
 No Scale

CHANNEL DATA:
 DRAINAGE AREA: 0.48
 D: 0.20
 S: 0.50
 V: 0.70
 S: 0.271
 S: 0.080
 S: 0.025
 S: 0.015
 S: 0.010

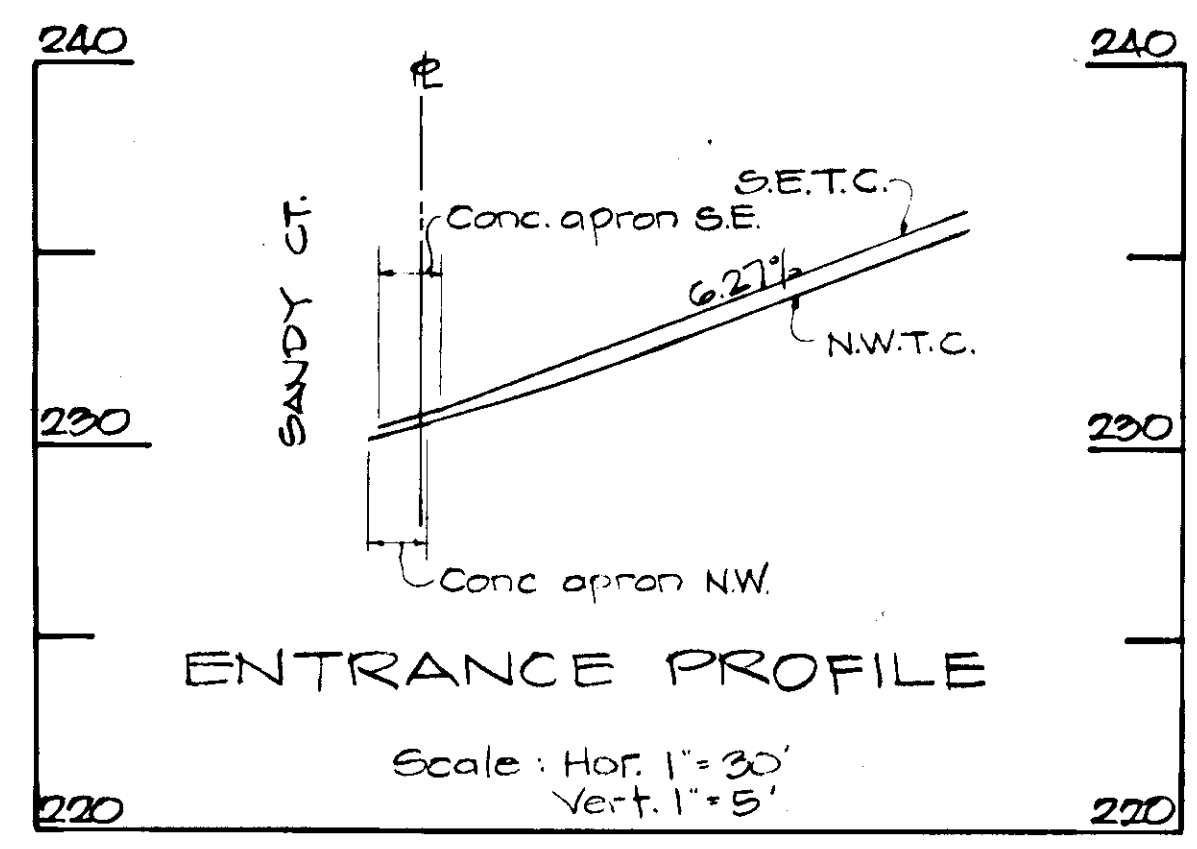
No.	Class	Inv. In	Inv. Out	Remarks	Top Elev.
M-1	Stn. Manhole	225.84	224.11	D-28 Pg. 154	224.00
M-2	Stn. Manhole	225.84	225.34	D-10 Pg. 154	224.00
M-3	Stn. Manhole	225.84	224.15	D-10 Pg. 154	224.00
E-1	Stn. Type 'C'	224.00	224.00	See Detail This Sheet	224.00
E-2	Stn. Type 'C'	224.00	224.00	D-22 Pg. 107	224.00
E-3	Stn. Type 'C'	224.00	224.00	D-22 Pg. 107	224.00



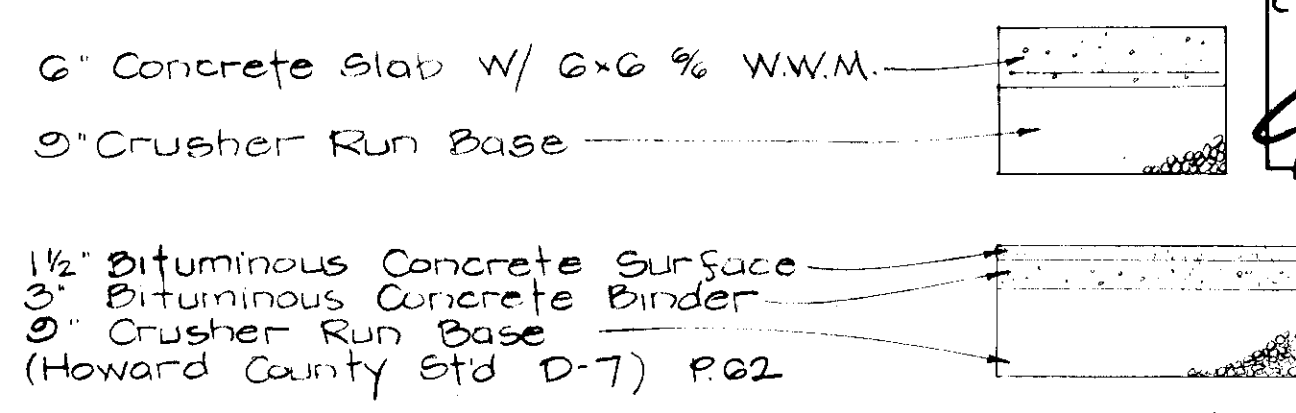
STORM WATER MANAGEMENT HEADWALL E-1
 Scale: 1/2" = 1'-0"



SCHEMATIC PROFILE OF BUILDING
 PHASE I AND PHASE II FUTURE
 No Scale



ENTRANCE PROFILE
 Scale: Hor. 1"=30' Vert. 1"=5'



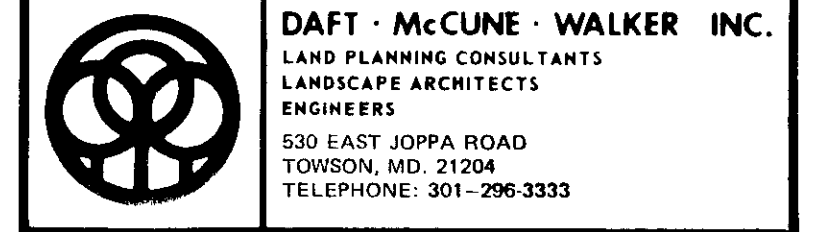
TYPICAL PAVING SECTION

PAVING NOTES
 1. THE BASE WILL BE PRIMED IN ACCORDANCE WITH SECTION C-30-3 AS PROVIDED IN THE HOWARD CO. ROAD CONST. CODE & STD. SPECIFICATIONS.
 2. A TRUCK CURB IS REQUIRED IN ACCORDANCE WITH SECTION C-31-4 OF THE HOWARD CO. ROAD CONST. CODE & STD. SPECIFICATIONS.
 3. ALL CONSTRUCTION SHALL BE IN ACCORDANCE WITH THE HOWARD COUNTY ROAD CONSTRUCTION CODE AND STANDARD SPECIFICATIONS.

APPROVED: For public water, public sewerage and storm drainage systems and roads.
 HOWARD COUNTY DEPT. OF PUBLIC WORKS
Richard E. Freudenberger 6/23/78
 DIRECTOR DATE
W.C. Fallant 6-21-78
 CHIEF, BUREAU OF ENGINEERING DATE

APPROVED: For public water and public sewerage systems.
 HOWARD COUNTY HEALTH DEPARTMENT
Joseph J. Bruno 6-27-78
 COUNTY HEALTH OFFICER DATE

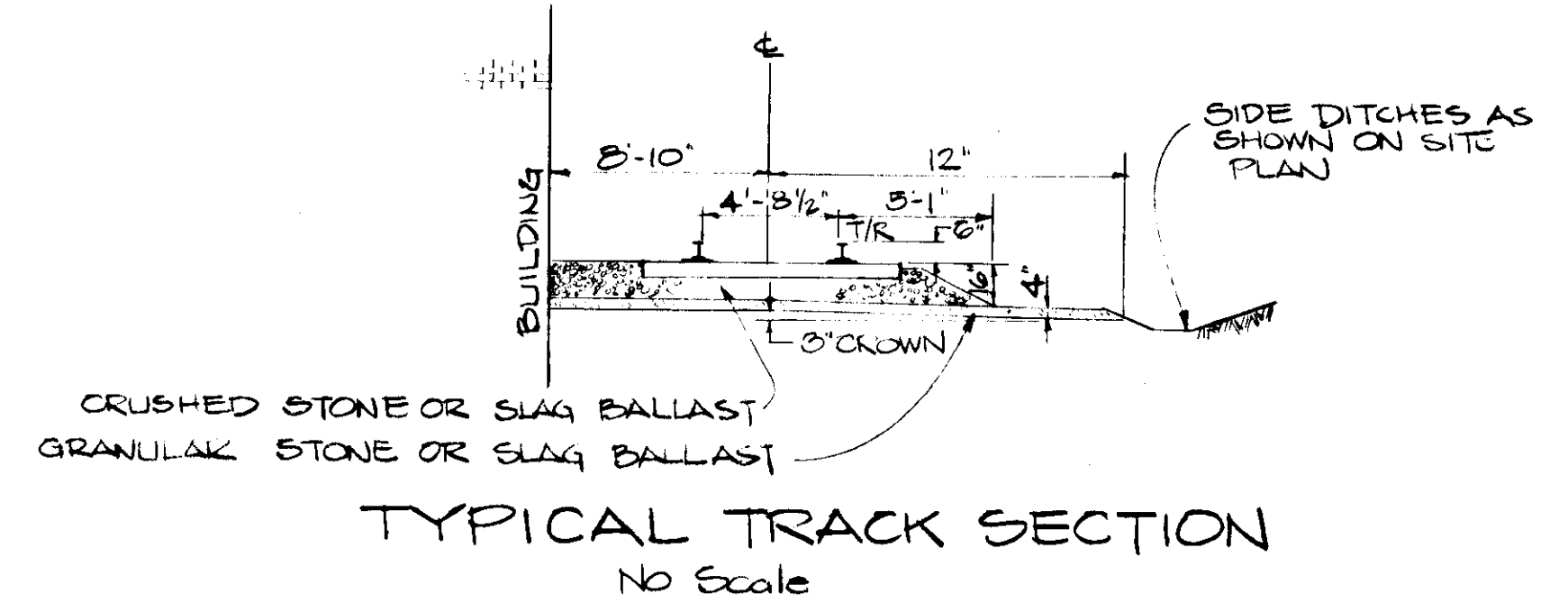
APPROVED: Howard County Office of Planning and Zoning
Thomas J. Starnes 6-29-78
 PLANNING DIRECTOR DATE
John W. Madsen 6-28-78
 CHIEF, DIV. OF LAND DEVELOPMENT DATE



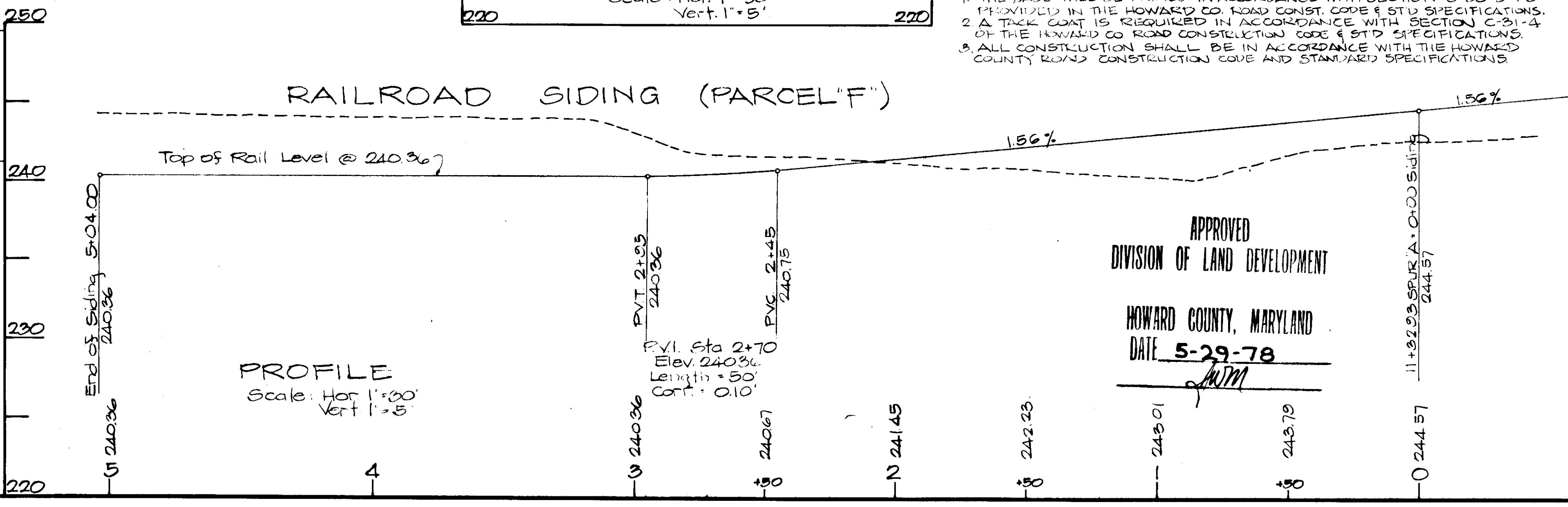
ACME PAPER & SUPPLY CO. INC. WAREHOUSE
 PROFILES & DETAILS
 BALTIMORE WASHINGTON INDUSTRIAL PARK
 BLOCK 'C' PARCEL 'F'
 PLAT NUMBER 302G
 TAX MAP 48
 ELECTION DISTRICT NO. 6
 HOWARD COUNTY, MD.
 SHEET 2 OF 4

REVIEWED FOR HOWARD SOIL CONSERVATION DISTRICT AND MEETS TECHNICAL REQUIREMENTS.
C. Wayne Ray 6-13-78
 SIGNATURE DATE
 U.S. SOIL CONSERVATION SERVICE

THIS DEVELOPMENT PLAN IS APPROVED FOR SOIL EROSION AND SEDIMENT CONTROL BY THE HOWARD SOIL CONSERVATION DISTRICT.
Wes EARP 6-13-78
 APPROVED DATE
 HOWARD S.C.D.



TYPICAL TRACK SECTION
 No Scale



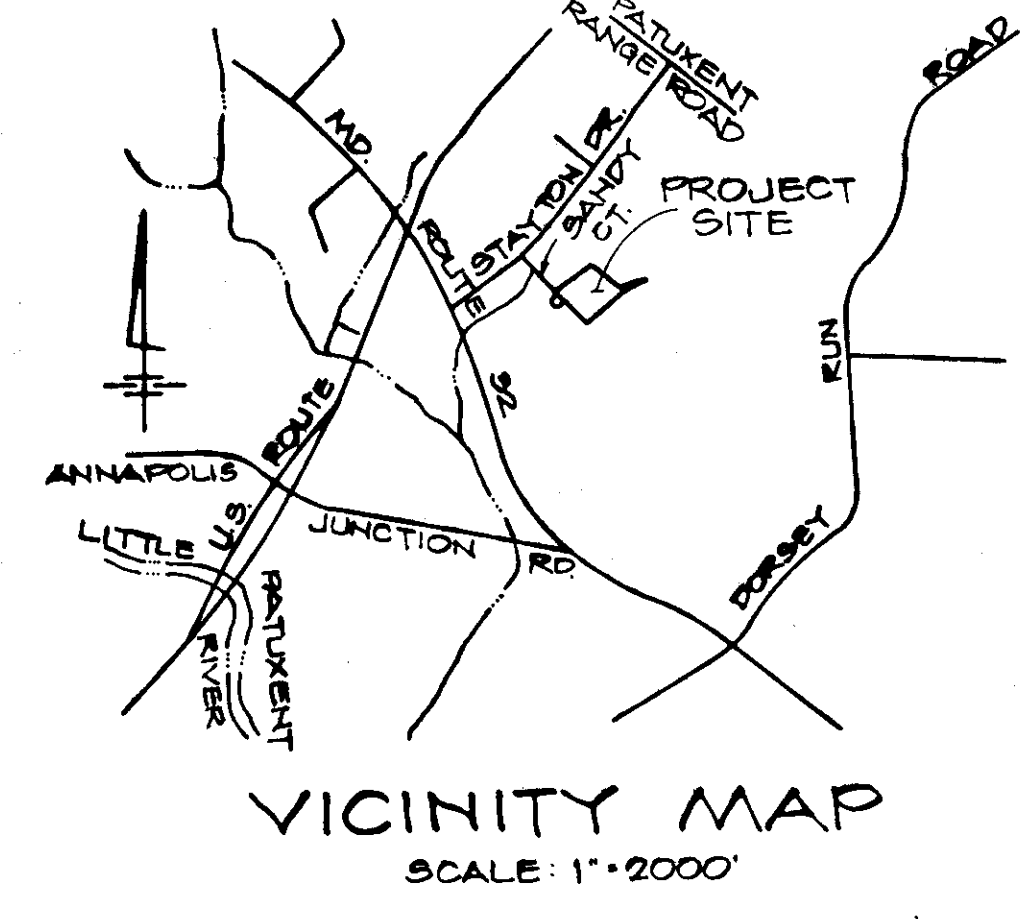
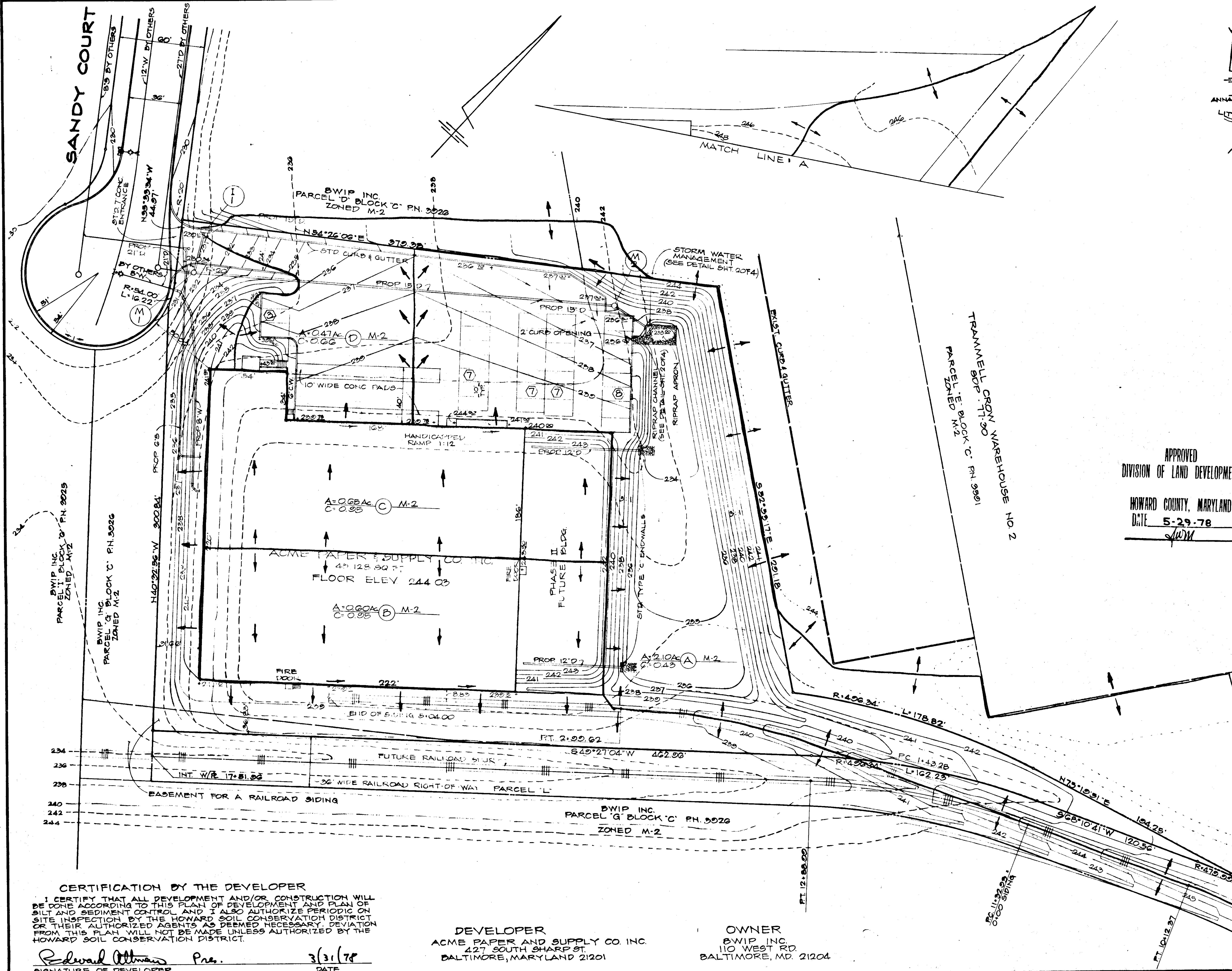
PROFILE
 Scale: Hor. 1"=30' Vert. 1"=5'

APPROVED
 DIVISION OF LAND DEVELOPMENT
 HOWARD COUNTY, MARYLAND
 DATE 5-29-78
WJM

DATE	REVISIONS
5-29-78	REV FOR COUNTY COMMISSION

SCALE: AS SHOWN
 JOB ORDER NO. B-7810
 ISSUE DATE April 3, 1978





APPROVED: For public water, public sewerage and storm drainage systems and roads.

HOWARD COUNTY DEPT. OF PUBLIC WORKS
Richard E. Prudenbeyer 6/23/78
 DIRECTOR DATE

W. F. Albert 6-21-78
 CHIEF, BUREAU OF ENGINEERING DATE

APPROVED: For public water and public sewerage systems.

HOWARD COUNTY HEALTH DEPARTMENT
Joan M. Brien 6-27-78
 COUNTY HEALTH OFFICER DATE

APPROVED: Howard County Office of Zoning and Planning
Thomas J. Hammett 6-27-78
 PLANNING DIRECTOR DATE

John W. Mansbach 6-27-78
 CHIEF, DIV. OF LAND DEVELOP. DATE

APPROVED
 DIVISION OF LAND DEVELOPMENT

HOWARD COUNTY, MARYLAND
 DATE 5-29-78
AWM

DAFT · McCUNE · WALKER INC.
 LAND PLANNING CONSULTANTS
 LANDSCAPE ARCHITECTS
 ENGINEERS
 530 EAST JOPPA ROAD
 TOWSON, MD. 21284
 TELEPHONE: 301-296-3333

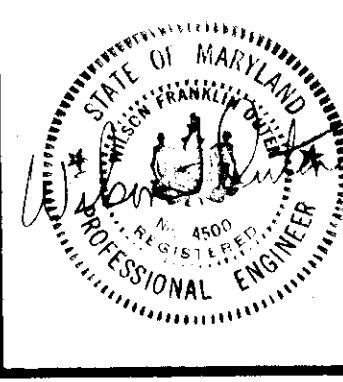
ACME PAPER & SUPPLY CO. INC.
 WAREHOUSE
 DRAINAGE AREA MAP
 BALTIMORE WASHINGTON INDUSTRIAL PARK
 BLOCK 'C' PARCEL 'F'
 PLAT NUMBER 3026
 TAX MAP 48
 ELECTION DISTRICT NO. 6
 HOWARD COUNTY, MD.
 SHEET 3 OF 4

DATE	REVISIONS

SCALE:
 1" = 30'

JOB ORDER NO.
 B-7810

ISSUE DATE
 April 3, 1978

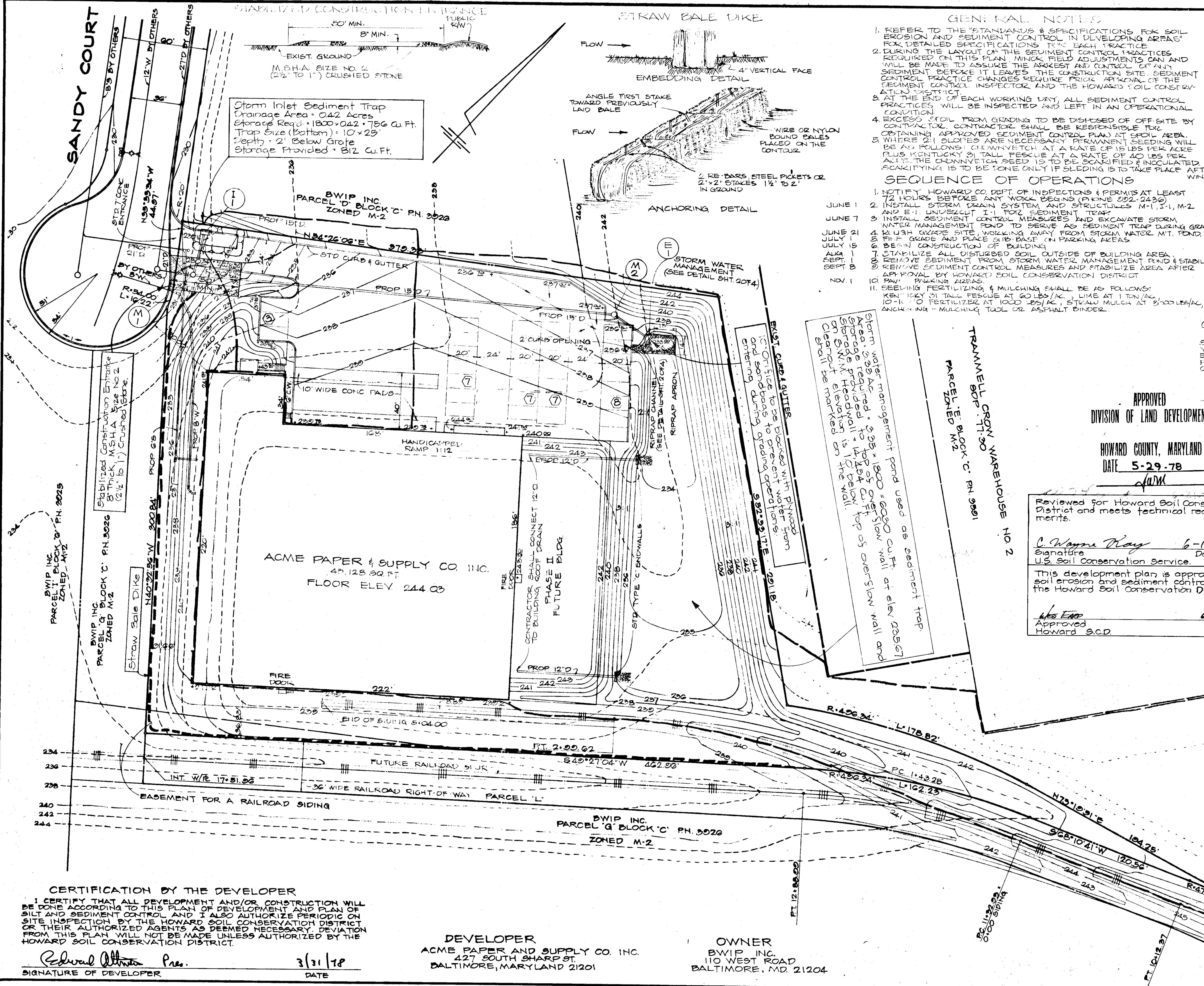


CERTIFICATION BY THE DEVELOPER
 I CERTIFY THAT ALL DEVELOPMENT AND/OR CONSTRUCTION WILL BE DONE ACCORDING TO THIS PLAN OF DEVELOPMENT AND PLAN OF SILT AND SEDIMENT CONTROL, AND I ALSO AUTHORIZE PERIODIC ON SITE INSPECTION BY THE HOWARD SOIL CONSERVATION DISTRICT OR THEIR AUTHORIZED AGENTS, AS DEEMED NECESSARY. DEVIATION FROM THIS PLAN WILL NOT BE MADE UNLESS AUTHORIZED BY THE HOWARD SOIL CONSERVATION DISTRICT.

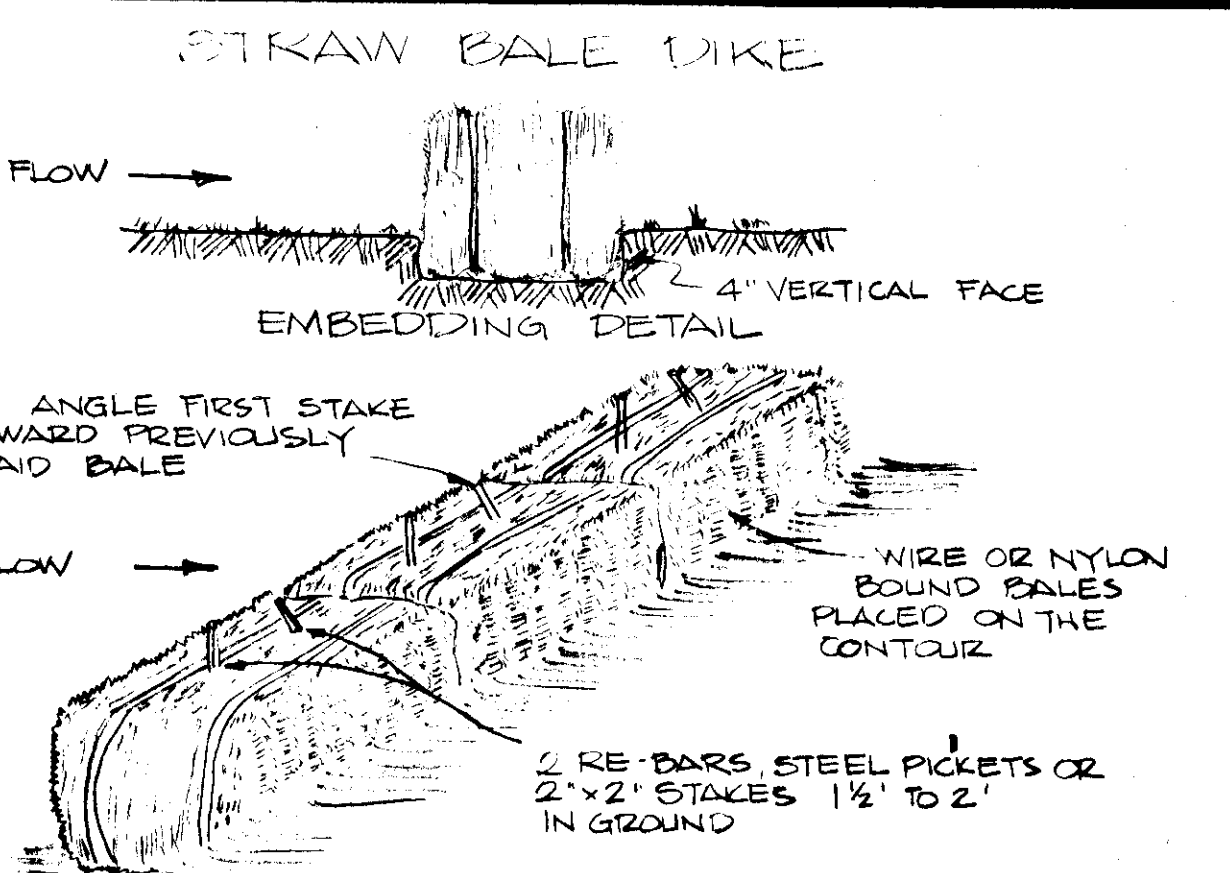
Redward Altman Pres. 3/31/78
 SIGNATURE OF DEVELOPER DATE

DEVELOPER
 ACME PAPER AND SUPPLY CO. INC.
 427 SOUTH SHARP ST.
 BALTIMORE, MARYLAND 21201

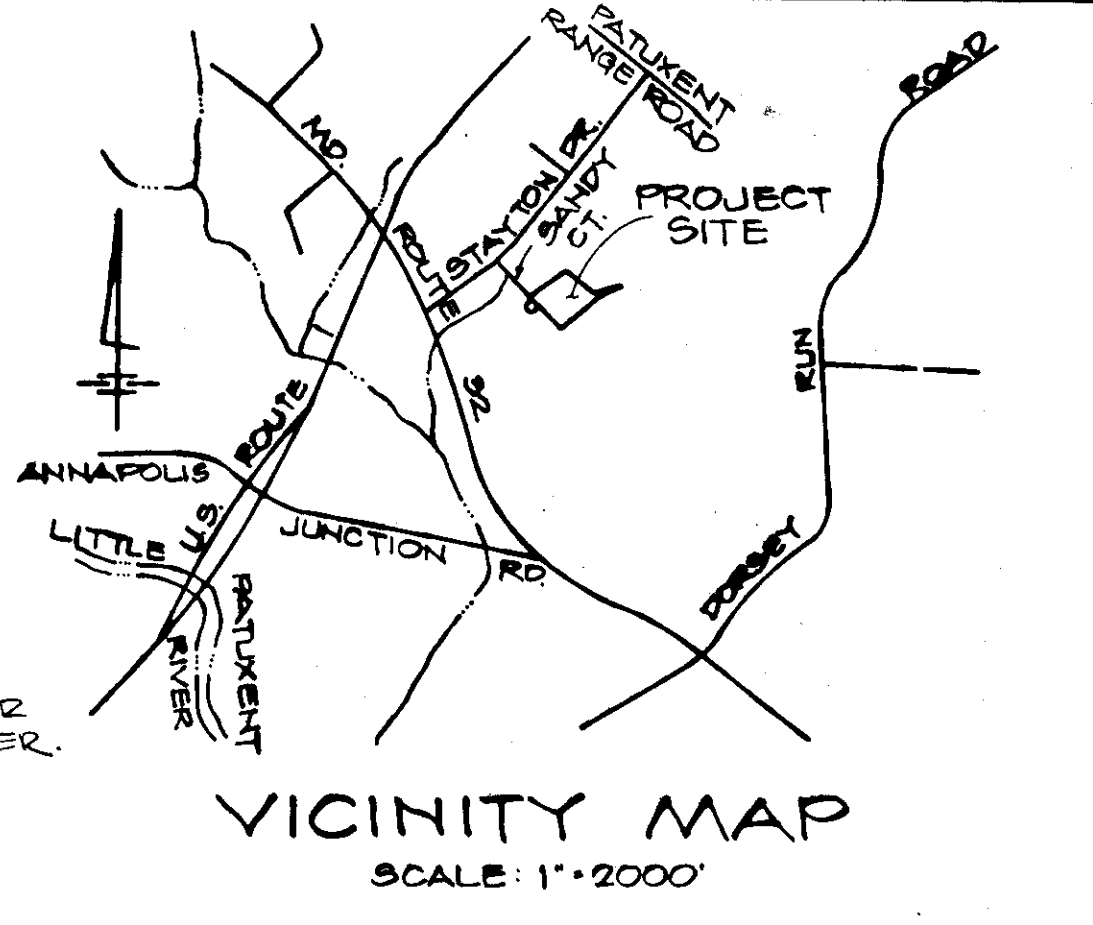
OWNER
 BWIP INC.
 110 WEST RD.
 BALTIMORE, MD. 21204



Storm Inlet Sediment Trap
 Storage Area = 0.42 Acres
 Storage Req'd = 1800 x 0.42 = 756 Cu Ft.
 Trap Size (Bottom) = 10' x 25'
 Depth = 2' Below Grade
 Storage Provided = 812 Cu Ft.



- GENERAL NOTES**
- REFER TO THE 'STANDARDS & SPECIFICATIONS FOR SOIL EROSION AND SEDIMENT CONTROL IN DEVELOPING AREAS' FOR DETAILED SPECIFICATIONS TO EACH PRACTICE.
 - DURING THE LAYOUT OF THE SEDIMENT CONTROL PRACTICES REQUIRED ON THIS PLAN, MINOR FIELD ADJUSTMENTS CAN AND WILL BE MADE TO ASSURE THE PROTECT AND CONTROL OF ANY SEDIMENT BEFORE IT LEAVES THE CONSTRUCTION SITE. SEDIMENT CONTROL PRACTICE CHANGES REQUIRE PRIOR APPROVAL OF THE SEDIMENT CONTROL INSPECTOR AND THE HOWARD SOIL CONSERVATION DISTRICT.
 - AT THE END OF EACH WORKING DAY, ALL SEDIMENT CONTROL PRACTICES WILL BE INSPECTED AND LEFT IN AN OPERATIONAL CONDITION.
 - EXCESS SOIL FROM GRADING TO BE DISPOSED OFF SITE BY CONTRACTOR. CONTRACTOR SHALL BE RESPONSIBLE FOR OBTAINING APPROVED SEDIMENT CONTROL PLAN AT SOIL AREA.
 - WHERE 2:1 SLOPES ARE NECESSARY PERMANENT SEEDING WILL BE AS FOLLOWS: GRASS SEED AT A RATE OF 15 LBS PER ACRE PLUS KENTUCKY 91 TALL FESCUE AT A RATE OF 40 LBS PER ACRE. THE GRASS SEED IS TO BE SCARIFIED & INOCULATED. SCARIFYING IS TO BE DONE ONLY IF SLEDDING IS TO TAKE PLACE AFTER WINTER.
- SEQUENCE OF OPERATIONS**
- NOTIFY HOWARD CO. DEPT. OF INSPECTIONS & PERMITS AT LEAST 72 HOURS BEFORE ANY WORK BEGINS (PHONE 282-2430).
 - INSTALL STORM DRAIN SYSTEM AND STRUCTURES M-1, J-1, M-2 AND E-1 UNDERLIFT I-1 FOR SEDIMENT TRAP.
 - INSTALL SEDIMENT CONTROL MEASURES AND EXCAVATE STORM WATER MANAGEMENT POND TO SERVE AS SEDIMENT TRAP DURING GRADING.
 - BLUSH GRADE SITE, WORKING AWAY FROM STORM WATER M.T. POND.
 - FIN. GRADE AND PLACE SUB-BASE ON PARKING AREAS.
 - BEGIN CONSTRUCTION OF BUILDING.
 - STABILIZE ALL DISTURBED SOIL OUTSIDE OF BUILDING AREA.
 - REMOVE SEDIMENT FROM STORM WATER MANAGEMENT POND & STABILIZE PERMANENT CONTROL MEASURES AND STABILIZE AREA AFTER APPROVAL BY HOWARD SOIL CONSERVATION DISTRICT.
 - PAV. PARKING AREAS.
 - SEEDING FERTILIZING & MULCHING SHALL BE AS FOLLOWS:
 KENTUCKY 91 TALL FESCUE AT 20 LBS/AC, LIME AT 1 TON/AC,
 10-10-10 FERTILIZER AT 1000 LBS/AC, STRAW MULCH AT 2000 LBS/AC,
 ANCHORING - MULCHING TOOL OR ASPHALT BINDER.



- JUNE 1
 JUNE 2
 JUNE 21
 JULY 1
 JULY 15
 AUG 1
 SEPT 1
 SEPT 8
 NOV 1

CERTIFICATION BY THE ENGINEER
 I CERTIFY THAT THIS PLAN FOR EROSION AND SEDIMENT CONTROL REPRESENTS A PRACTICAL AND WORKABLE PLAN BASED ON MY PERSONAL KNOWLEDGE OF THE SITE CONDITIONS AND THAT IT WAS PREPARED IN ACCORDANCE WITH THE REQUIREMENTS OF THE HOWARD SOIL CONSERVATION DISTRICT.

Wilson J. Oates 4/8/78
 DATE

APPROVED
 DIVISION OF LAND DEVELOPMENT
 HOWARD COUNTY, MARYLAND
 DATE 5-29-78
J.W.M.

APPROVED: For public water, public sewerage and storm drainage systems and roads.
 HOWARD COUNTY DEPT. OF PUBLIC WORKS
 Robert Breidenbeger 6/23/78
 DIRECTOR DATE

J.P.D. Lillard 6-21-78
 CHIEF, BUREAU OF ENGINEERING DATE

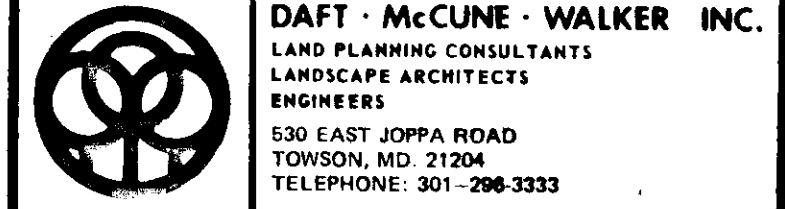
Reviewed for Howard Soil Conservation District and meets technical requirements.
C. Wayne Ray 6-13-78
 Signature Date
 U.S. Soil Conservation Service.

This development plan is approved for soil erosion and sediment control by the Howard Soil Conservation District.
Les Eard 6-13-78
 Approved Date
 Howard S.C.D.

APPROVED: For public water and public sewerage systems.
 HOWARD COUNTY HEALTH DEPARTMENT
Joyce Bryan 6-20-78
 CHIEF HEALTH OFFICER DATE

APPROVED: Howard County Office of Planning and Zoning
Thomas J. Smith 6-21-78
 PLANNING DIRECTOR DATE

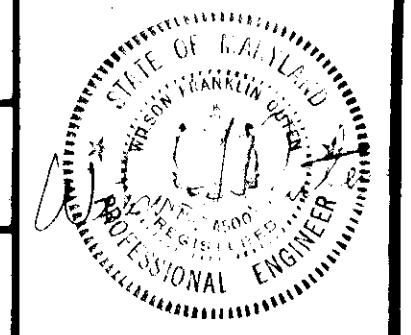
William W. Morrison 6-23-78
 CHIEF, DIV. OF LAND DEVELOPMENT DATE



ACME PAPER & SUPPLY CO. INC. WAREHOUSE SEDIMENT CONTROL PLAN
 BALTIMORE WASHINGTON INDUSTRIAL PARK
 BLOCK 'C' PARCEL 'F'
 PLAT NUMBER 302G
 TAX MAP 48
 ELECTION DISTRICT NO. 6
 HOWARD COUNTY, MD.
 SHEET 4 OF 4

DATE	REVISIONS

SCALE: 1" = 30'
 JOB ORDER NO. B-7810
 ISSUE DATE April 3, 1978



CERTIFICATION BY THE DEVELOPER
 I CERTIFY THAT ALL DEVELOPMENT AND/OR CONSTRUCTION WILL BE DONE ACCORDING TO THIS PLAN OF DEVELOPMENT AND PLAN OF SILT AND SEDIMENT CONTROL, AND I ALSO AUTHORIZE PERIODIC ON SITE INSPECTION BY THE HOWARD SOIL CONSERVATION DISTRICT OR THEIR AUTHORIZED AGENTS AS DEEMED NECESSARY. DEVIATION FROM THIS PLAN WILL NOT BE MADE UNLESS AUTHORIZED BY THE HOWARD SOIL CONSERVATION DISTRICT.

Richard Altman Pres. 3/31/78
 SIGNATURE OF DEVELOPER DATE

DEVELOPER
 ACME PAPER AND SUPPLY CO. INC.
 427 SOUTH SHARP ST.
 BALTIMORE, MARYLAND 21201

OWNER
 BWIP INC.
 110 WEST ROAD
 BALTIMORE, MD. 21204