

DRAINAGE AREA MAP
SHOWING OFF-SITE AREAS
SCALE: 1" = 200'

DRAINAGE AREA MAP
SCALE: 1" = 50'

APPROVED
PLANNING BOARD
OF HOWARD COUNTY
DATE: 4-12-78

APPROVED FOR PUBLIC WATER & SEWERAGE SYSTEMS
HOWARD COUNTY HEALTH DEPARTMENT
COUNTY HEALTH OFFICE: [Signature] DATE: 7-16-79
APPROVED HOWARD COUNTY OFFICE OF PLANNING & ZONING
DIRECTOR: [Signature] DATE: 7-16-79
CHIEF DIVISION OF LAND DEVELOPMENT DATE: 7-16-79
APPROVED FOR PUBLIC WATER SANITARY SEWER STORM DRAINAGE SYSTEM & ROADS
HOWARD COUNTY DEPARTMENT OF PUBLIC WORKS
DIRECTOR: [Signature] DATE: 7-12-79
CHIEF: BUREAU OF ENGINEERING DATE: 7-11-79

DESIGNED: NGP	ENGINEERS KIDDE CONSULTANTS INC. 1020 CROMWELL BRIDGE RD TOWSON, MD 21204 REG. PE. N° 6510	OWNER & DEVELOPER CHATHAM LIMITED PARTNERSHIP II 8650 BALTIMORE NATIONAL PIKE BELLGATE CITY, MARYLAND 21043	DATE 7/3/78	DRAINAGE AREA MAP		REVISIONS		SHEET N° 2 OF 6
DRAWN: WVB				CHATHAM GARDEN APARTMENTS		DATE	DESCRIPTION	BY
CHECKED: GL				SECTION 2 PARCEL "B" HOWARD COUNTY, MARYLAND ELECTION DISTRICT 2				DWG N°
								CONTRACT N°

SDP-78-53

STRUCTURE SCHEDULE

NO	TYPE	SIZE	INV. OUT	TOP ELEV.
1	SEE DETAIL	36" x 36"	382.03	394.8
2	SEE DETAIL	36" x 36"	385.81	396.4

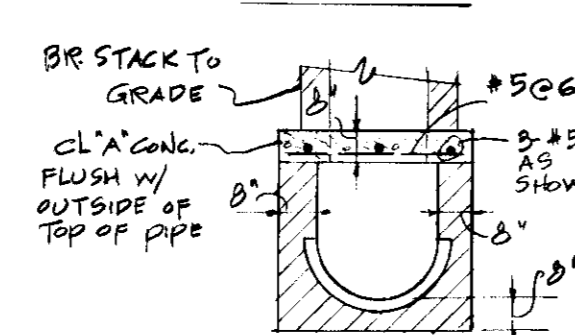
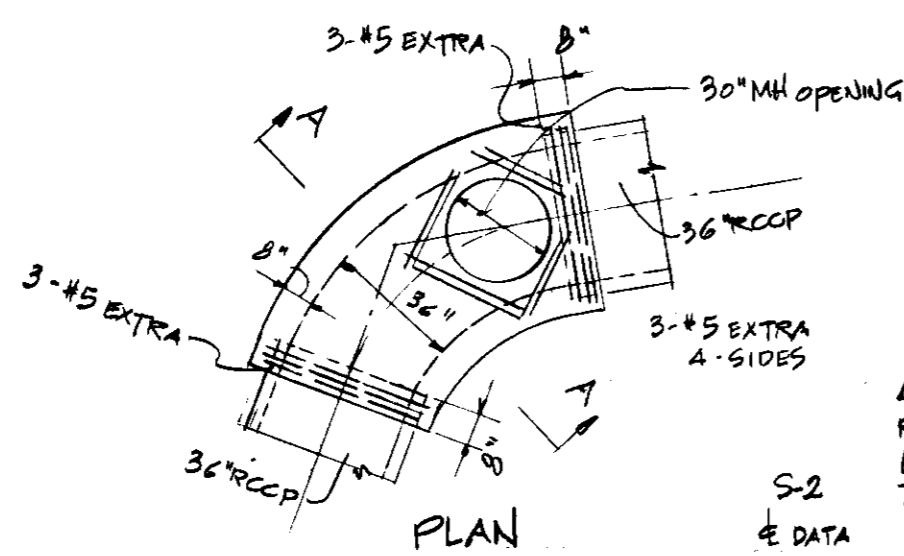
MANHOLE SCHEDULE

NO	TYPE	SIZE	INV. OUT	TOP ELEV.	REMARKS
1	STD. MH.	48"	388.14	402.60	P. 115B
2	STD. MH.	48"	390.46	397.8	P. 15B
3	STD. MH.	48"	385.30	400.8	P. 15B

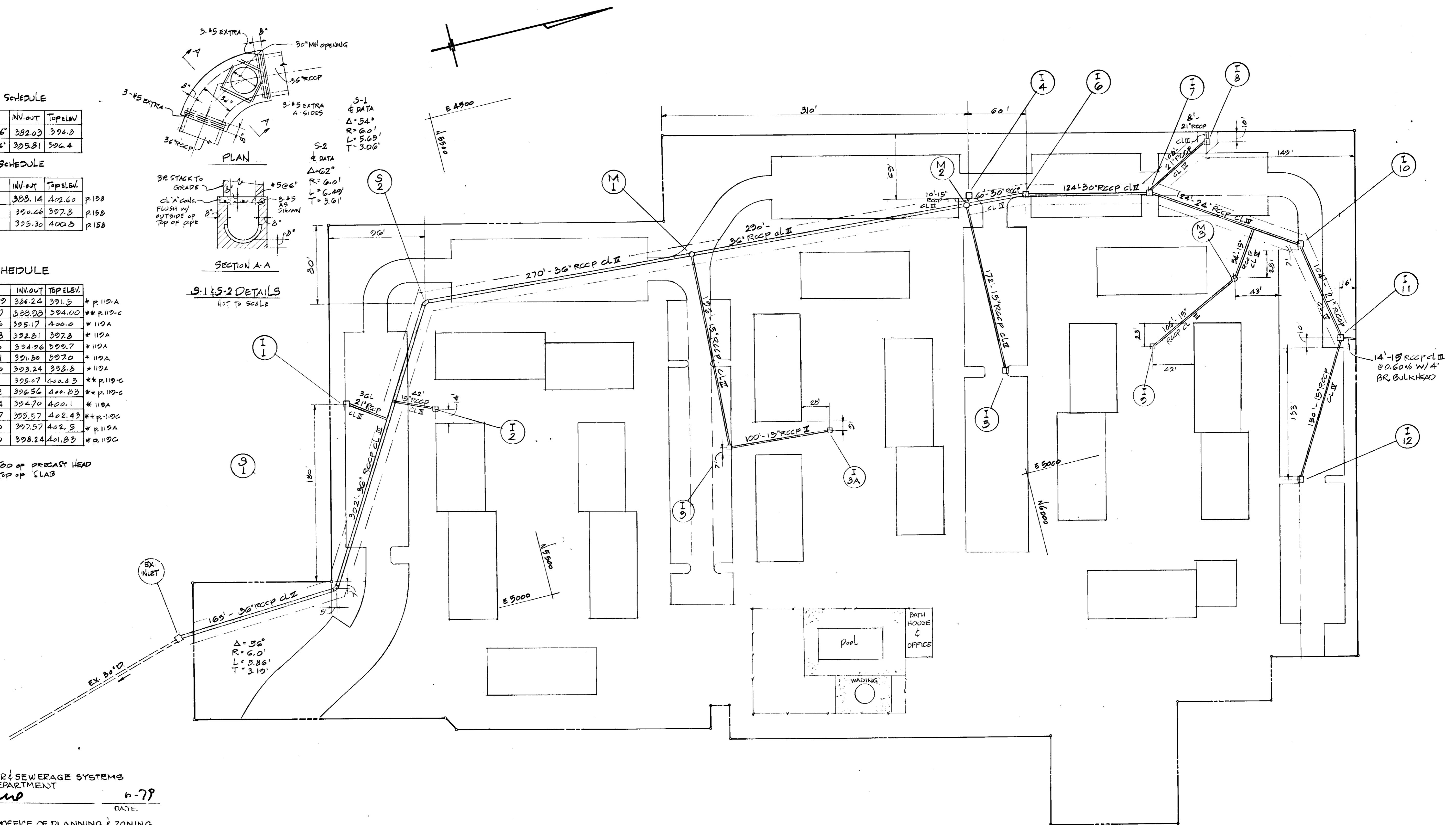
INLET SCHEDULE

NO	TYPE	Q	INV. OUT	TOP ELEV.	REMARKS
1	A-10	12.39	386.24	391.5	* P. 112A
2	CL "C"	4.77	388.98	394.00	** P. 112-C
3	A-5	7.06	385.17	400.0	* 112A
4	A-10	5.38	392.81	397.8	* 112A
5	A-10	4.90	394.98	399.7	* 112A
6	A-10	8.31	391.80	397.0	* 112A
7	A-10	4.70	393.24	398.8	* 112A
8	CL "C"	1.21	395.07	400.43	** P. 112-C
9	CL "C"	2.62	396.56	401.83	** P. 112-C
10	A-10	3.24	394.70	400.1	* 112A
11	CL "C"	3.07	395.57	402.43	** P. 112-C
12	A-10	4.03	397.57	402.8	* P. 112A
3A	CL "C"	1.83	398.24	401.83	** P. 112-C

* TOP OF PRECAST HEAD
** TOP OF SLAB



SECTION A-A
NOT TO SCALE



APPROVED FOR PUBLIC WATER & SEWERAGE SYSTEMS
HOWARD COUNTY HEALTH DEPARTMENT

[Signature] 6-79
COUNTY HEALTH OFFICER DATE

APPROVED HOWARD COUNTY OFFICE OF PLANNING & ZONING
[Signature] 7-16-79
DIRECTOR DATE

[Signature] 7-16-79
CHIEF DIVISION OF LAND DEVELOPMENT DATE

APPROVED FOR PUBLIC WATER, SANITARY SEWER, STORM DRAINAGE SYSTEM & ROADS
HOWARD COUNTY DEPARTMENT OF PUBLIC WORKS

[Signature] 7/12/79
DIRECTOR DATE

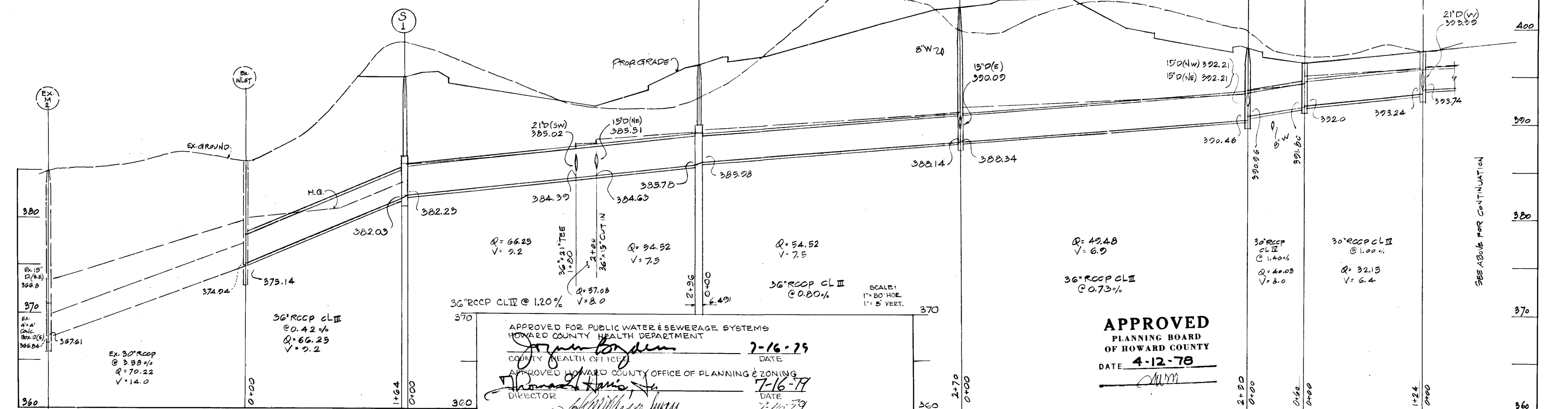
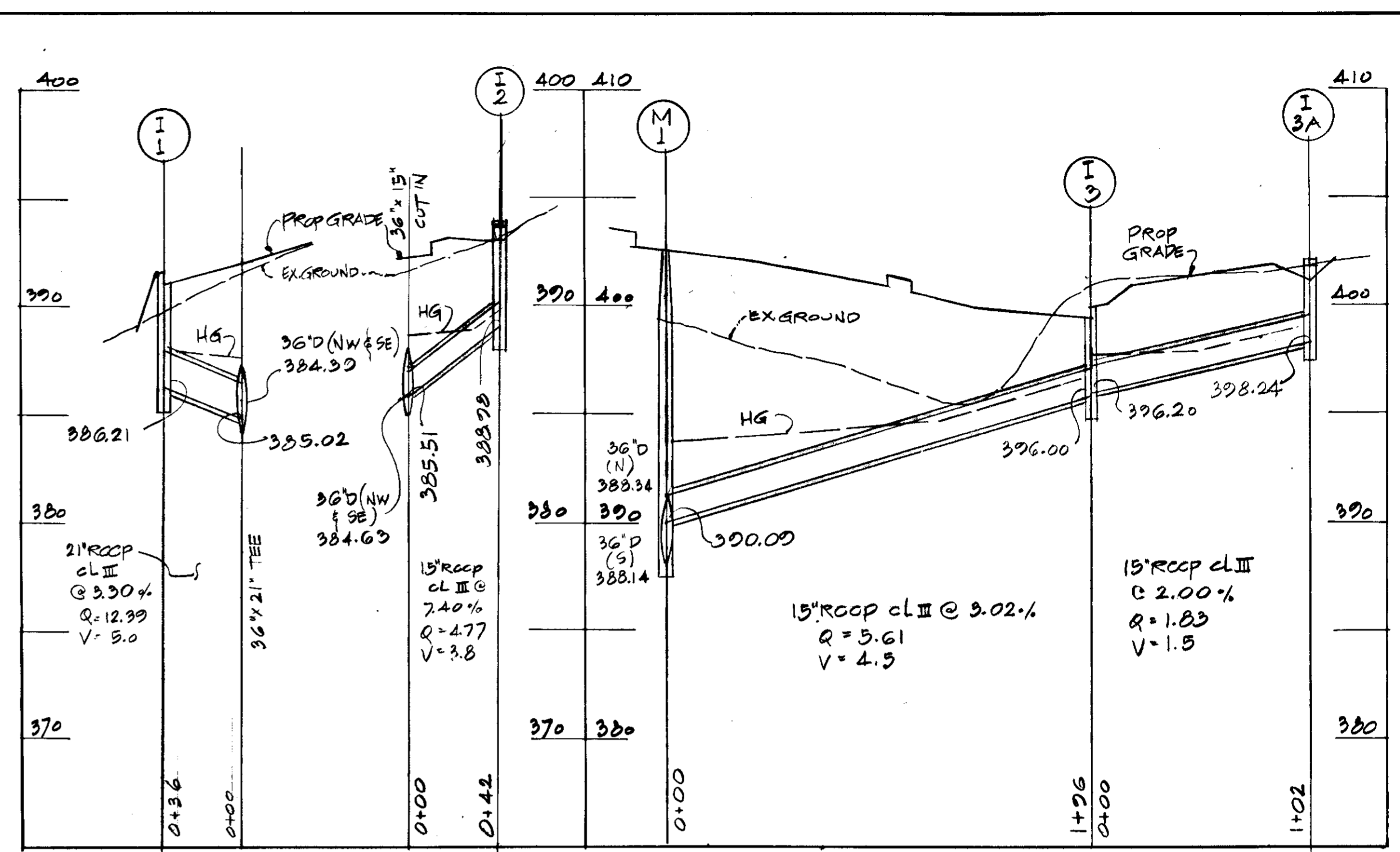
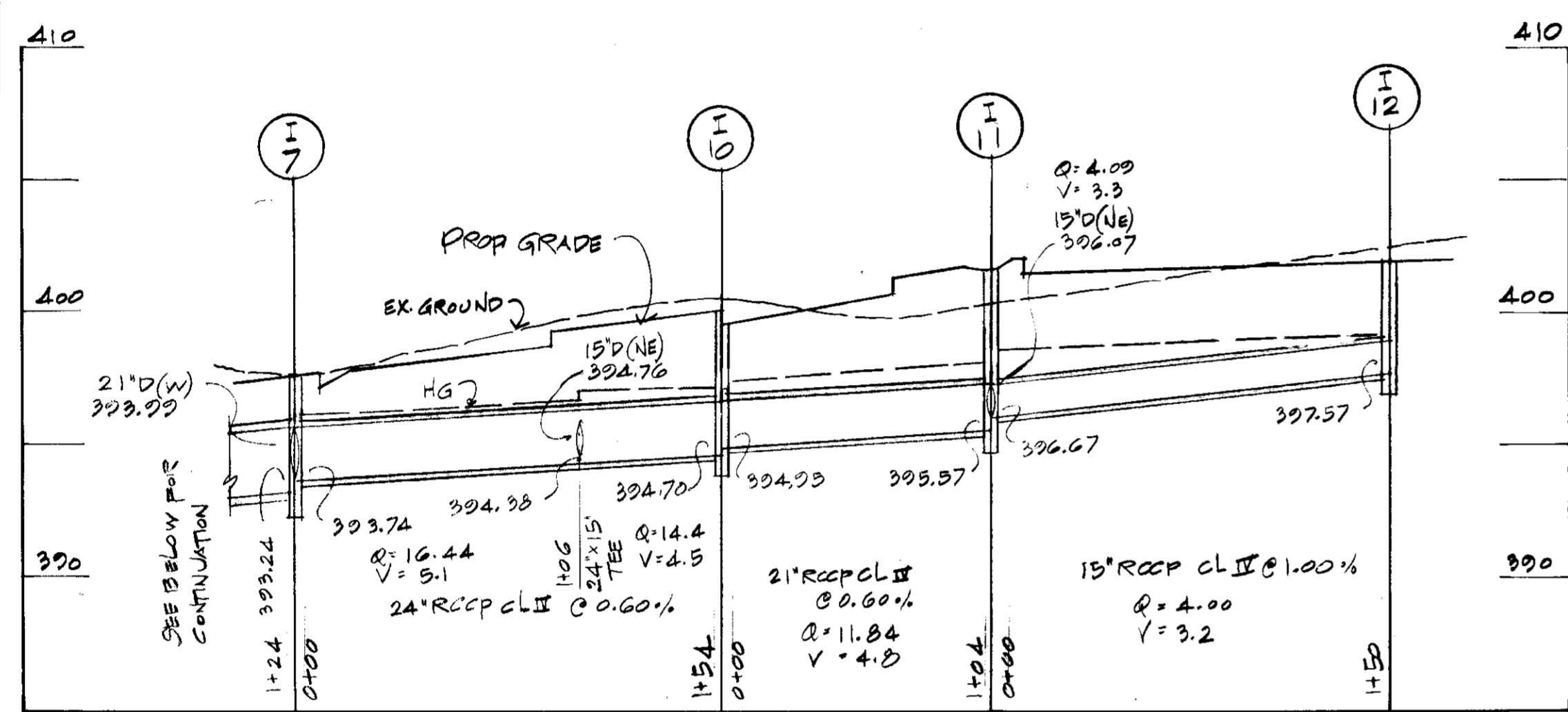
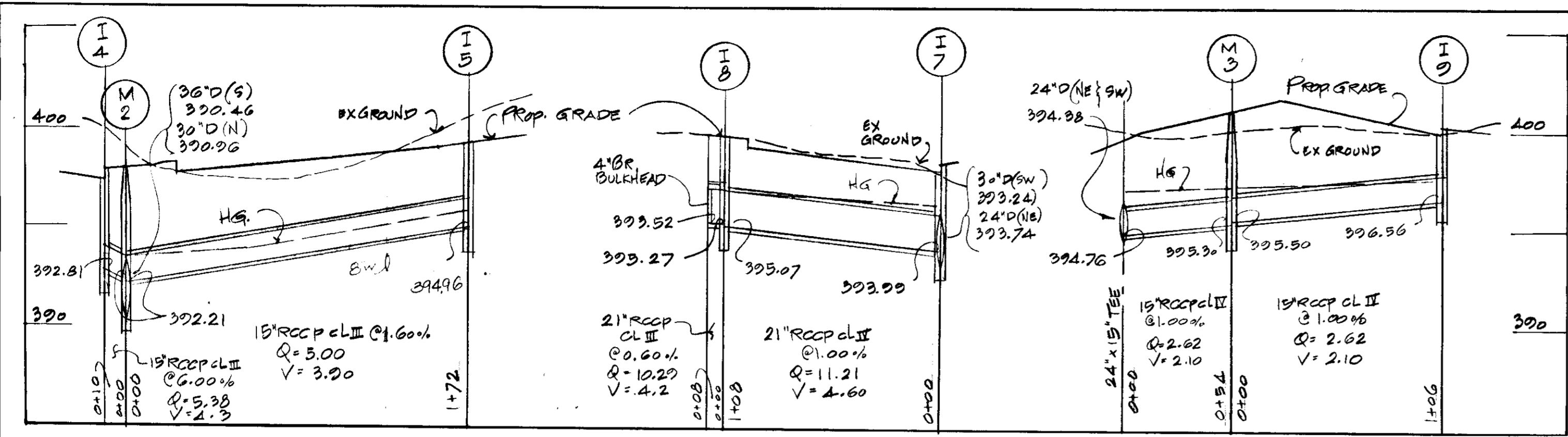
[Signature] 7/16/79
CHIEF BUREAU OF ENGINEERING DATE

PLAN
SCALE: 1" = 30'

APPROVED
PLANNING BOARD
OF HOWARD COUNTY
DATE 4-12-78

DESIGNED: NAD	ENGINEERS KIDDE CONSULTANTS INC. 1020 CROMWELL BRIDGE RR. TOWSON, MD. 21284 Reg. P.E. No. 6510	OWNER & DEVELOPER CHATHAM LIMITED PARTNERSHIP II 8650 BALTIMORE NATIONAL PIKE ELLICOTT CITY, MARYLAND 21043	STORM DRAIN PLAN	REVISIONS	SHEET NO. 2 OF 6
DRAWN: WWD			CHATHAM GARDEN APARTMENTS	DATE DESCRIPTION BY	DWG. NO.
CHECKED: GL			SECTION 2 PARCEL 'B'		CONTRACT NO.
			HOWARD COUNTY, MARYLAND P.B. 4332 ELECTION DISTRICT 2		

SDP-78-53



APPROVED FOR PUBLIC WATER & SEWERAGE SYSTEMS
 HOWARD COUNTY HEALTH DEPARTMENT
 COUNTY HEALTH OFFICER
 DATE: 7-16-79

APPROVED HOWARD COUNTY OFFICE OF PLANNING & ZONING
 DIRECTOR
 DATE: 7-16-79

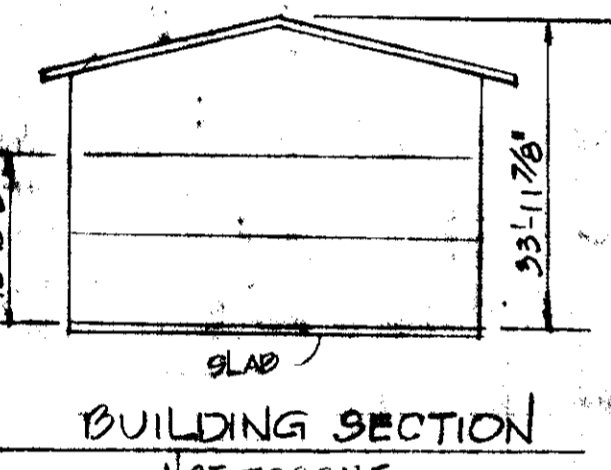
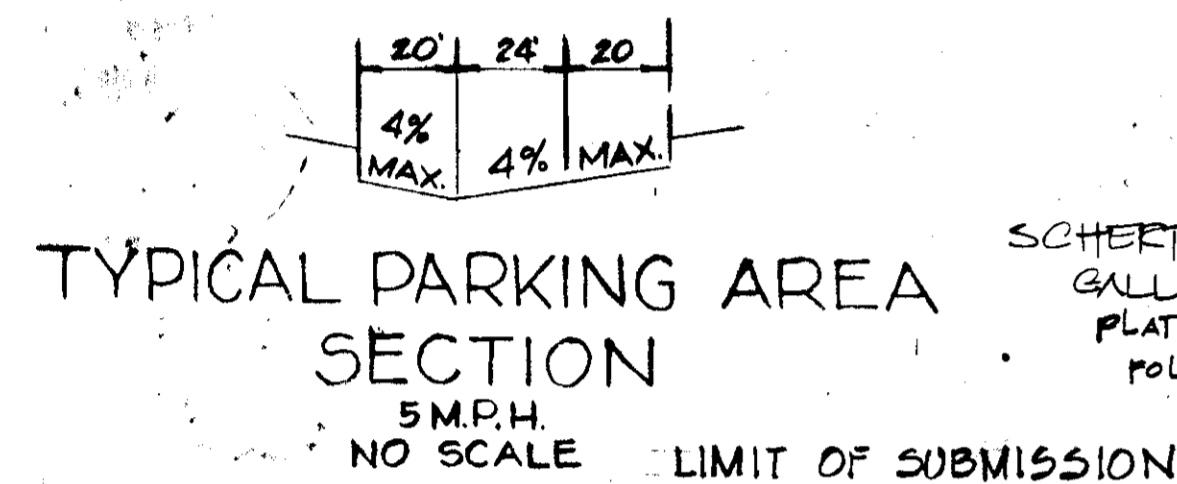
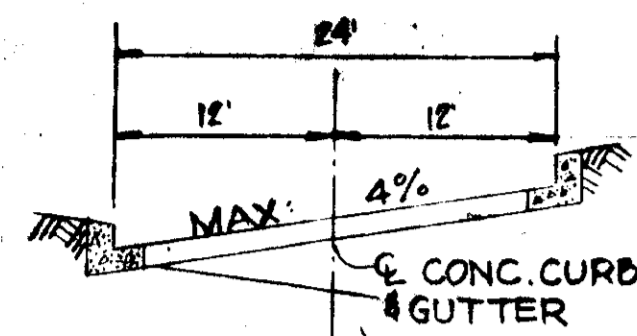
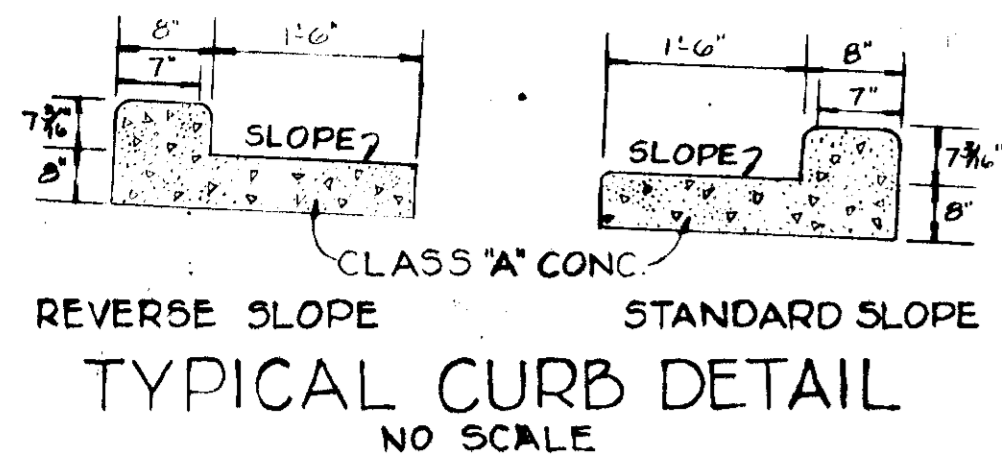
CHIEF: DIVISION OF LAND DEVELOPMENT
 DATE: 7-16-79

APPROVED FOR PUBLIC WATER, SANITARY SEWER, STORM DRAINAGE SYSTEM & ROADS
 HOWARD COUNTY DEPARTMENT OF PUBLIC WORKS
 for DIRECTOR: *William M. McNeiland* DATE: 7/12/79
 for CHIEF: BUREAU OF ENGINEERING: *Allen S. Brown* DATE: 7/17/79

APPROVED
 PLANNING BOARD
 OF HOWARD COUNTY
 DATE: 4-12-78

DESIGNED: NAD	ENGINEERS: KIDDE CONSULTANTS INC. 1020 CROMWELL BRIDGE RD. TOWSON, MD. 21284	OWNER & DEVELOPER: CHATHAM LIMITED PARTNERSHIP II 8655 BALTIMORE NATIONAL PIKE ELLICOTT CITY, MARYLAND 21043
DRAWN: WVB	DATE: 7/3/79	
CHECKED: GL		

STORM DRAIN PROFILES		REVISIONS		SHEET No: 4 OF 6
CHATHAM GARDEN APARTMENTS		DATE	DESCRIPTION	DWG No
SECTION 2 PARCEL 'B'				CONTRACT No
HOWARD COUNTY, MARYLAND				



VILLAGE GREEN Shopping Center

APPROVED FOR PUBLIC WATER & SEWERAGE SYSTEMS
HOWARD COUNTY HEALTH DEPARTMENT

Green Brown
COUNTY HEALTH OFFICER

7-16-79
DATE

APPROVED HOWARD COUNTY OFFICE OF PLANNING & ZONING

Thomas J. Lamb
DIRECTOR

7-16-79
DATE

CHIEF OF DIVISION OF LAND DEVELOPMENT

APPROVED FOR PUBLIC WATER, SANITARY SEWER DRAINAGE SYSTEM & ROADS
HOWARD COUNTY DEPARTMENT OF PUBLIC WORKS

Frankville H. Wickland (Acting)
DIRECTOR

7-12-79
DATE

CHIEF: BUREAU OF ENGINEERING

DATE

NOTE:
SLOPES STEEPER THAN 3:1 SHOWN WITH HATCHING
SHALL BE SOGGLED WITH KENTUCKY 31 TALL
FESCUE SOG & DEGGED, BEFORE APPLYING
SOD. SPREAD 100 LBS. OF 10-10-10 FERTILIZER
30 LBS. 5-0-5/1000 & SLOW RELEASE NITROGEN
2.3.5 LBS./1000, WATER AS NEEDED UNTIL
GROWTH ASSURED.

REVIEWED FOR HOWARD CO. SCS & MEETS
TECHNICAL REQUIREMENTS
William T. Rowe
6-27-79
DATE
THIS DEVELOPMENT PLAN IS APPROVED FOR
SOIL EROSION & SEDIMENT CONTROL BY THE
HOWARD CO. SOIL CONSERVATION DISTRICT
William T. Rowe
6-27-79
DATE

MODIFICATION OF TRAPS IN CONSTRUCTION SEQUENCE,
INLET SED TRAP #1 & #3 TO BE MODIFIED OR ELIMINATED AS
SHOWN UPON STABILIZATION OF PARTS OF DRAINAGE AREA &
COMPLETION OF BUILDING CONSTRUCTION EXCEPT FOR THAT
OTHERWISE PROHIBITED BY ORIGINAL DISPOSITION OF TRAPS
UPON MODIFICATION CONTRACTOR TO INSURE EFFECTIVE
DRAINAGE TO OPERATING TRAPS.
CONVERSION OF SED BASIN #1 TO INLET SED TRAP #6 TO BE
ACCOMPLISHED WHEN NECESSARY FOR BLDG CONSTRUCTION.

GENERAL NOTES

1. TAX MAP 28, PARCEL 801
2. WATER & SEWER TO BE PROVIDED FOR CONNECTIONS TO EXISTING MAINS
3. PEDESTRIAN WALKWAYS TO BE PROVIDED IN ACCORDANCE WITH HOWARD CO. REGULATIONS
4. ALL DISTURBED AREAS IF NOT PAVED TO BE STABILIZED WITH SEED OR SOD AS SOON AS POSSIBLE
5. NO FENCES OR WALLS OTHER THAN THOSE SHOWN HEREON ARE TO BE PERMITTED.
6. TYPICAL PARKING SPACES 20'x10'x200 SQ. FT.
7. ALL STOP SIGNS TO BE PLACED AS DIRECTED BY HOWARD CO. D.P.W.
8. THERE SHALL BE A 15 FT. LANDSCAPED AREA BETWEEN FRONTS OF ALL BLDGS & PARKING AREA.

Inlet silt trap data:

NO.	D.A.	Depth	sqm. needed	Start/Stop	Area
#1	1.3A	1.5'	87 sq±	370±	394.0
#2	2.6A	2.5'	174 sq±	174±	394.0
#3	2.1A	3.0'	140 sq±	171±	394.0
#4	0.8A	1.0'	62 sq±	62±	410.0
#5	1.4A	2.5'	123 sq±	141±	392.0
#6	1.2A	2.5'	83 sq±	90±	392.0

Site Area 431±
Area disturbed 14.0 AC±
Area paved & built on 5.7 AC±
Area to be stabilized 8.3 AC±

SEDIMENT CONTROL 1

REV. FEB 9, 1978

SHEET 5 OF 6

KIDDE CONSULTANTS, INC.
1020 CROMWELL BRIDGE ROAD
BALTIMORE, MARYLAND 21204

ENGINEERS
KIDDE CONSULTANTS INC.
1020 CROMWELL BRIDGE RD
TOWSON, MD. 21284
George Lamb
7/12/79
DATE

OWNER & DEVELOPER
CHATHAM LIMITED PARTNERSHIP
8600 BALTIMORE NATIONAL PIKE
BLANCKFORD CITY, MARYLAND
21043

HOWARD COUNTY, MARYLAND

CHATHAM GARDEN APARTMENTS
SECTION TWO
PARCEL 'B'

ELECTION DISTRICT NO. 2

SCALE: 1"=40'

SDP-78-53

SEQUENCE OF OPERATION:

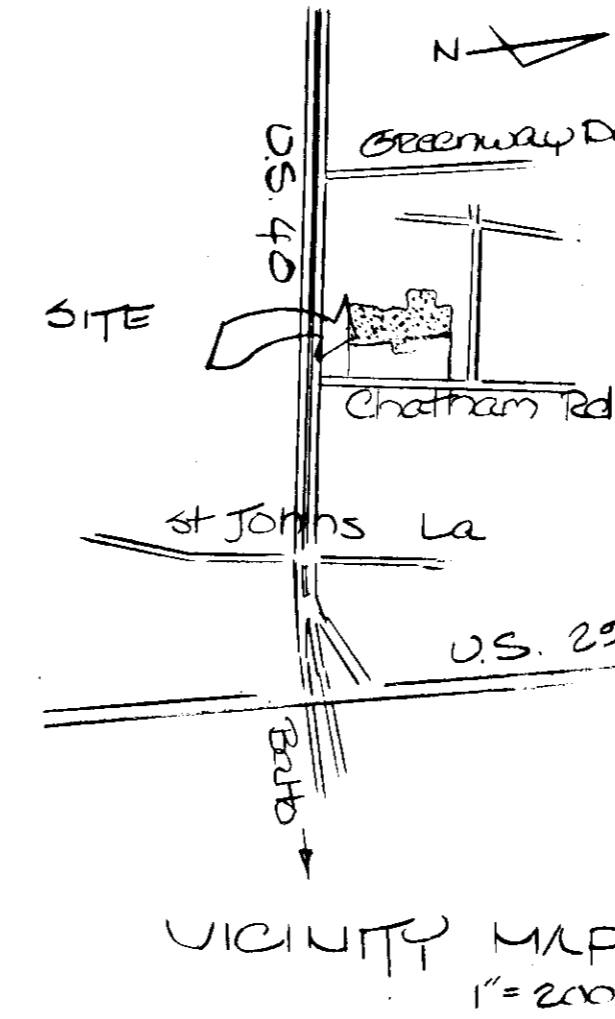
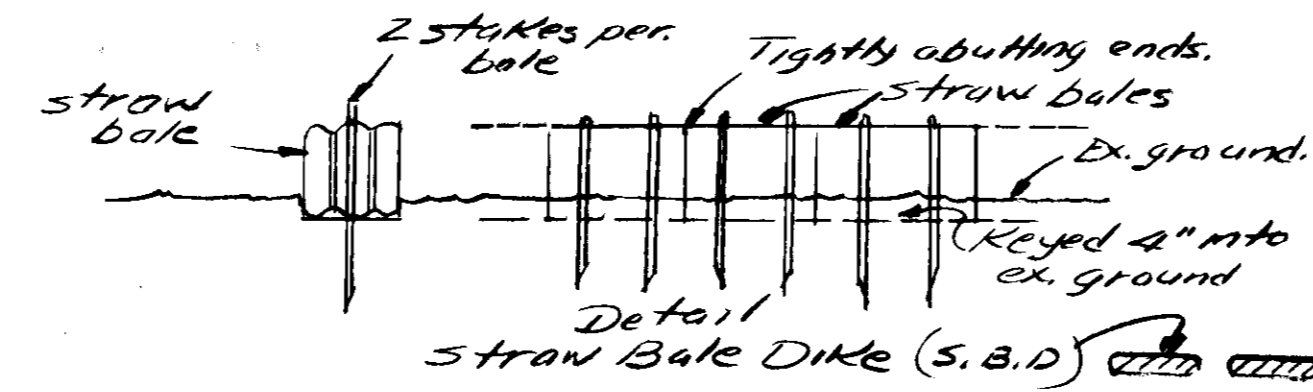
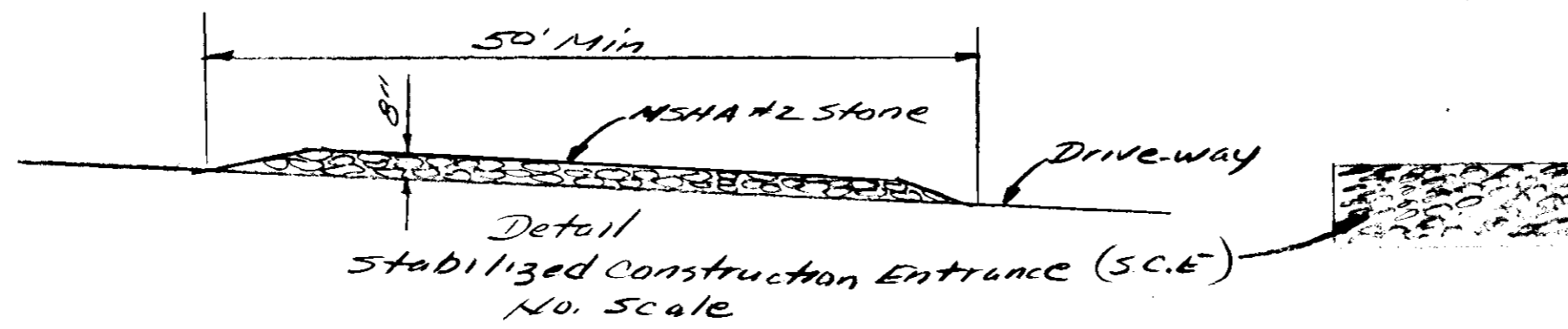
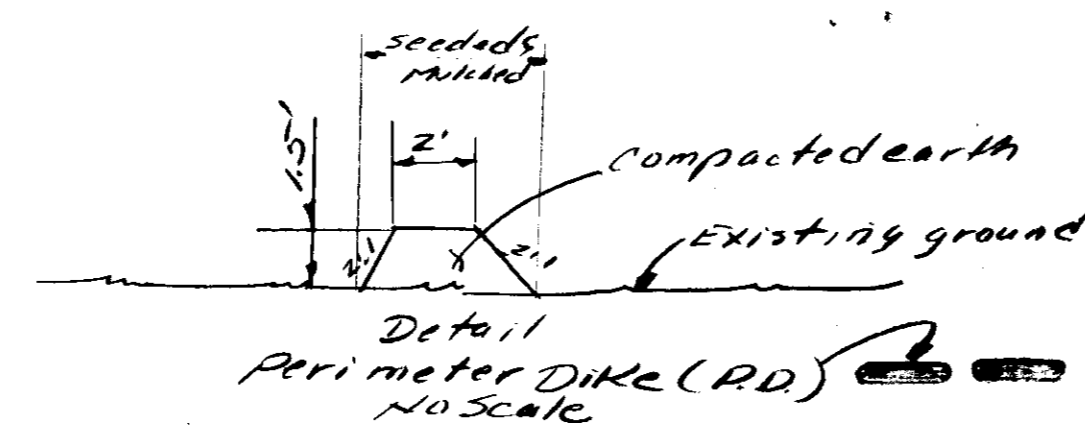
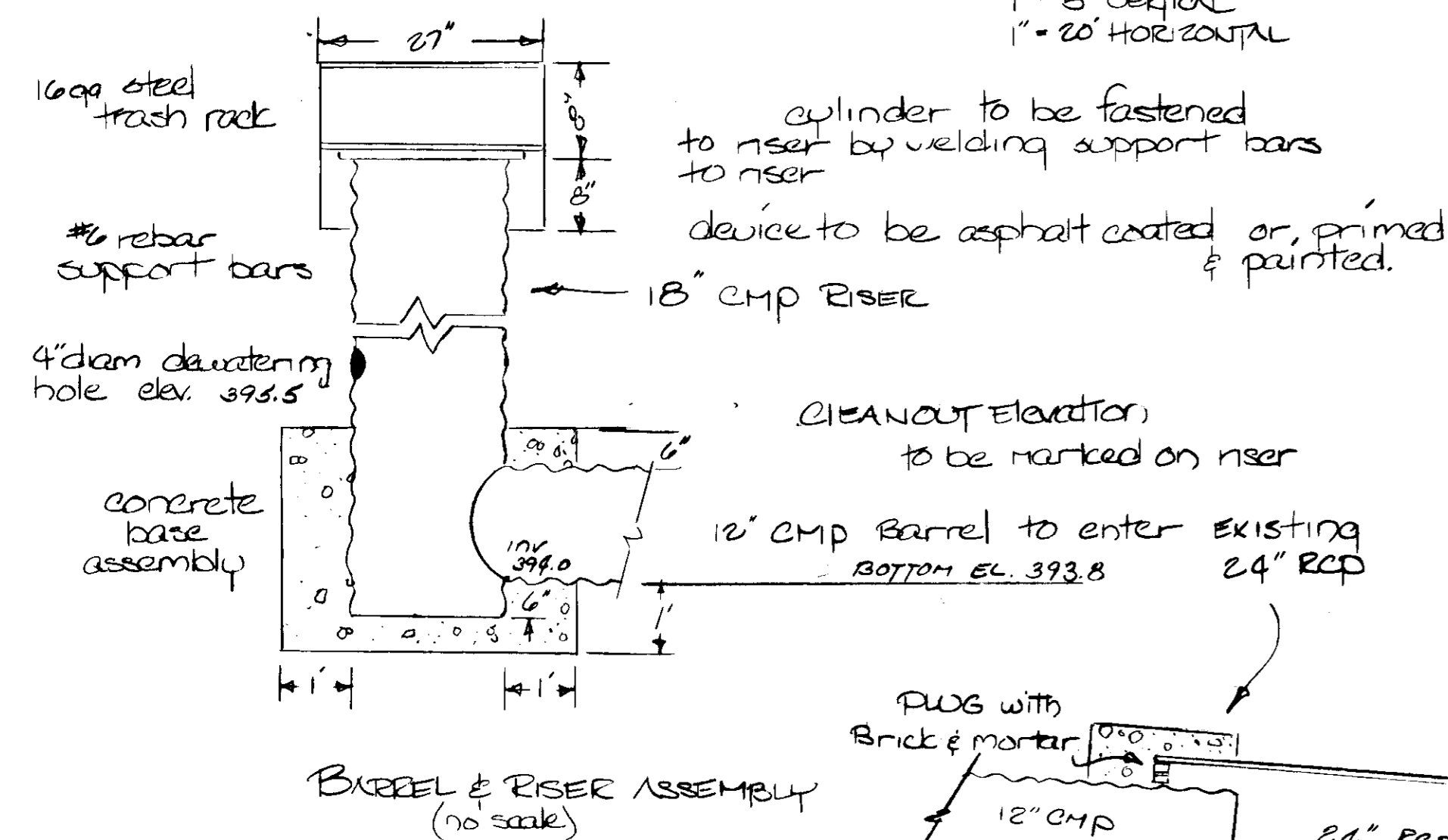
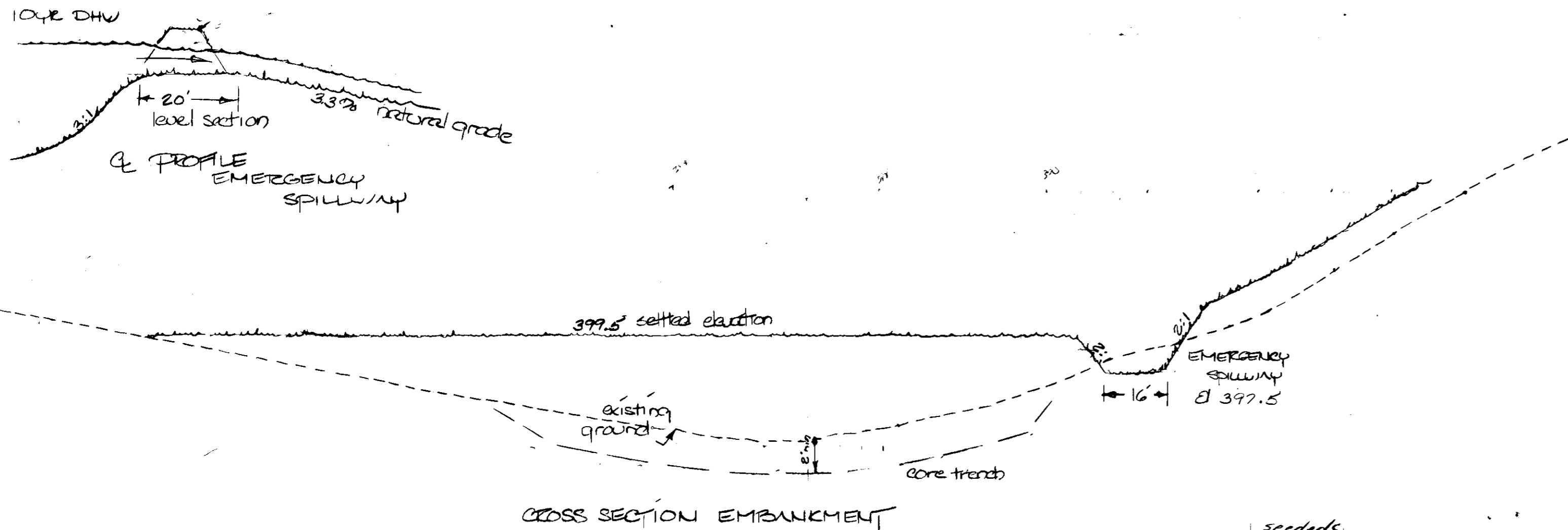
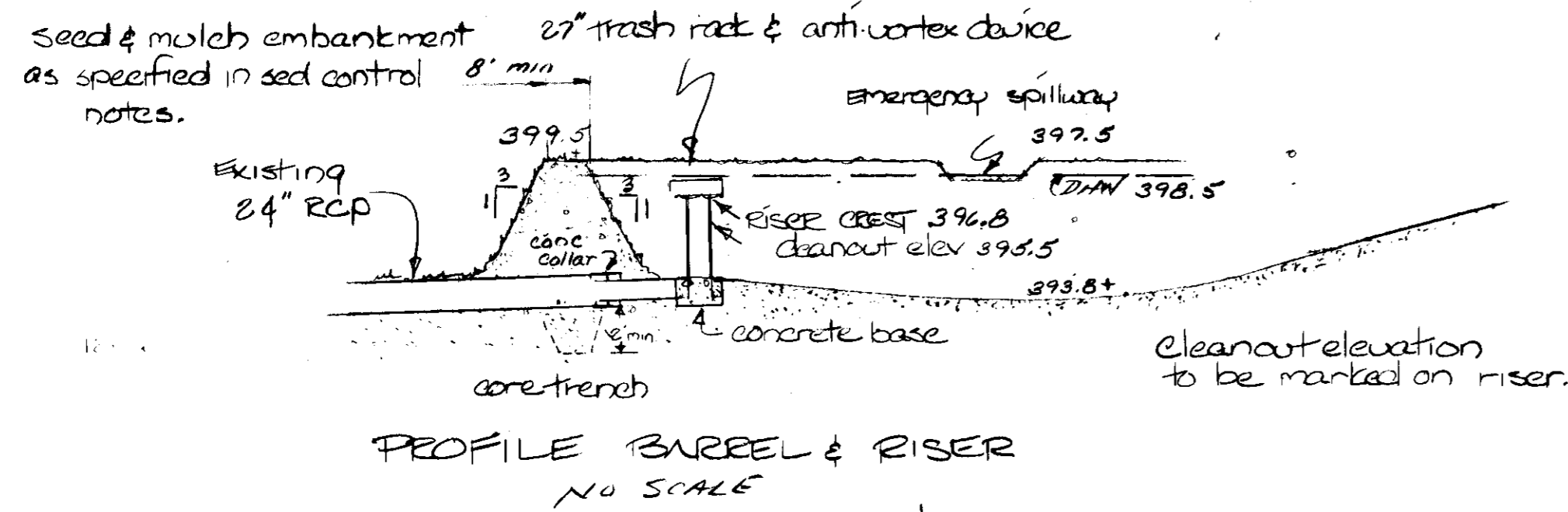
1. NOTIFY HOWARD COUNTY BUREAU OF LICENSES, INSPECTION, & PERMITS BY HD IN ADVANCE OF ANY CONSTRUCTION.
 2. CONSTRUCT & STABILIZE ALL SEDIMENT CONTROL MEASURES EXCEPT INLET TRAPS.
 3. CLEAR, STOCKPILE TOPSOIL, & GRADE SITE.
 4. ESTABLISH INLET SEDIMENT TRAPS, CONSTRUCTION OF UTILITIES, MODIFY SEDIMENT BASIN.
 5. FINAL GRADING & STABILIZATION OF DISTURBED AREAS.
 6. MAINTENANCE UPON COMPLETION. MODIFY TRAPS IN ACCORD W/ NOTE
 7. REMOVE SEDIMENT CONTROL DEVICES AFTER OBTAINING PROPER APPROVAL & STABILIZATION.
- REMOVE ALL SILT FROM SED BASIN, BACKFILL WITH SUITABLE MATERIAL AFTER REMOVING BARREL & RISER TO FINISH GRADES AS SHOWN ON SITE PLAN. STABILIZE ALL DISTURBED AREAS.
- INSTALL S.B.D. AT TOE OF OUTSLOPE OF BASIN DURING REMOVAL OF BARREL & RISER & BACKFILL OPERATION.

SEDIMENT CONTROL NOTES:

1. ALL SEDIMENT CONTROL MEASURES TO BE CONSTRUCTED ACCORDING TO THE STANDARDS & SPECIFICATIONS FOR SOIL EROSION & SEDIMENT CONTROL IN DEVELOPING AREAS.
2. FOLLOW SEQUENCE OF OPERATIONS AS GIVEN
3. CONTRACTOR TO INSURE ALL SURFACE RUNOFF IS DIRECTED TO S.B.D, PD, SEDIMENT TRAPS, OR BASIN.
4. CONTRACTOR TO INSPECT ALL SEDIMENT CONTROL MEASURES DAILY & AFTER EACH RAIN AND MAKE ANY NECESSARY REPAIRS AND/OR REPLACEMENTS AS REQUIRED.
5. AFTER CLEARING CONTRACTOR TO STRIP TOPSOIL & STOCKPILE IN AREA DESIGNATED OR AS DIRECTED BY FIELD ENGINEER. ALL STOCKPILED TOPSOIL TO REMAIN UNDISTURBED FOR 3 MO. OR LONGER. SHALL BE FERTILIZED, LIMED & SEEDED WITH ANNUAL RYE GRASS @ RATE OF 1 lb/1000sqft.
6. AS FORM DEWINS ARE CONSTRUCTED INLETS NOT USED AS SEDIMENT TRAPS SHALL BE CLOSED BY SANDBAGGING & BOARDING UNTIL CONTRIBUTING AREAS ARE STABILIZED.
7. ADDITIONAL SEDIMENT CONTROL MEASURES MAY BE NECESSARY AS INSPECTION OR CHANGING CONDITIONS REQUIRE.
8. ALL DISTURBED AREAS TO BE SEED AS FOLLOWS:

KENTUCKY BLUEGRASS	40%	130 lb/ ac
CERTIFIED PERIQUIN	40%	
RED FESCUE CERTIFIED	20%	

PREPARE SOIL:
 GROUND LIMESTONE @ 2 TONS/AC.
 COMMERCIAL FERTILIZER (10-10-10) @ 3/4 TONS/AC
 SUPERPHOSPHATE @ 600 LB/AC
 MULCH WITH SMALL GRASS STRAW @ 1.5 TONS/AC WITH ASPHALT TIEDOWN.
9. SEDIMENT CONTROL MEASURES TO BE REMOVED ONLY WITH APPROVAL OF HOWARD COUNTY INSPECTOR



PREDOMINANT SOIL TYPES:
 HANOR LOAM
 CHESTER LOAM
 GLENVILLE SILT LOAM

ENGINEERS CERTIFICATION

I CERTIFY THAT THIS PLAN FOR EROSION & SEDIMENT CONTROL REPRESENTS A PRACTICAL AND WORKABLE PLAN BASED ON MY PERSONAL KNOWLEDGE OF THE SITE CONDITIONS AND THAT IT WAS PREPARED IN ACCORDANCE WITH THE REQUIREMENTS OF THE HOWARD COUNTY SOIL CONSERVATION DISTRICT.

Paul Lee
 PAUL LEE
 11-11-77
 KIDDE CONSULTANTS INC.
 1047 CROMWELL BRIDGE RD
 TOWSON, MARYLAND 21284

DEVELOPER'S CERTIFICATION

I CERTIFY THAT ALL DEVELOPMENT AND/OR CONSTRUCTION WILL BE DONE ACCORDING TO THIS PLAN OF DEVELOPMENT & PLAN OF EROSION & SEDIMENT CONTROL, AND I ALSO AUTHORIZE PERIODIC ON-SITE INSPECTION BY HOWARD CO SOIL CONSERVATION DISTRICT OR THEIR AUTHORIZED AGENTS AS ARE DEEMED NECESSARY, ALSO DEVIATION FROM THIS PLAN ONLY IF AUTHORIZED BY THE HOWARD CO SOIL CONSERVATION DISTRICT.

J. Richard Awalt
 J. RICHARD AWALT
 11/14/77
 Gen. Manager

REVIEWED FOR HOWARD COUNTY SCS & MEETS TECHNICAL REQUIREMENTS.

William T. Rowe DATE: 6-27-79
 U.S. SOIL CONSERVATION SERVICE

THIS DEVELOPMENT PLAN IS APPROVED FOR SOIL EROSION AND SEDIMENT CONTROL BY THE HOWARD COUNTY SOIL CONSERVATION DISTRICT

William T. Rowe DATE: 6-27-79
 HOWARD COUNTY S.C.D.

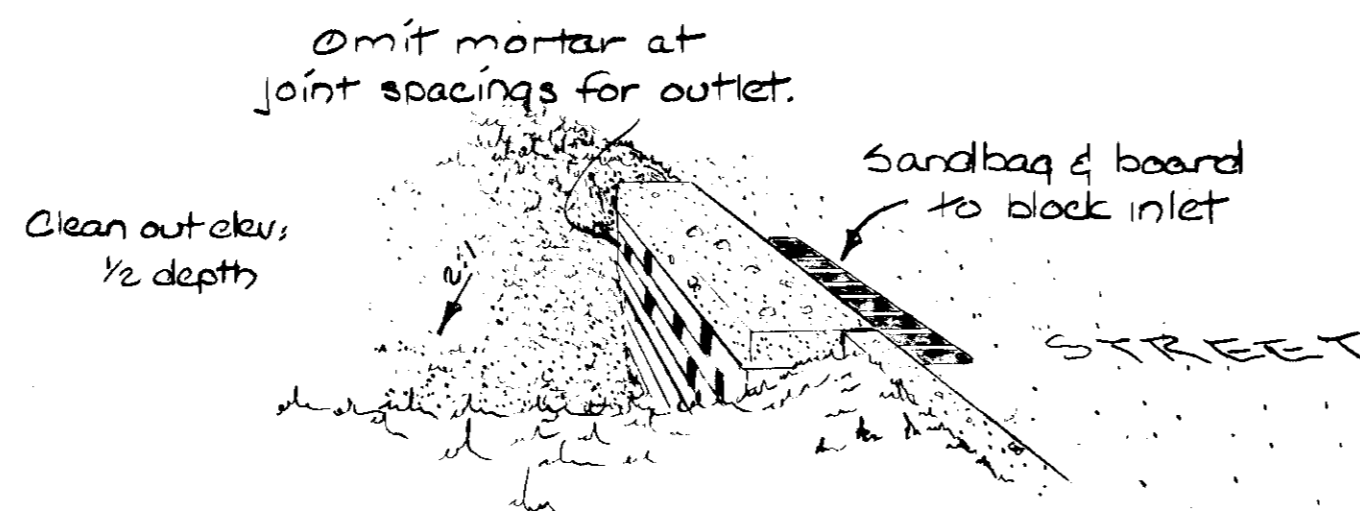
APPROVED FOR PUBLIC WATER & SEWERAGE SYSTEMS
 HOWARD COUNTY HEALTH DEPARTMENT
Spencer Gordon DATE: 7-16-79
 COUNTY HEALTH OFFICER

APPROVED HOWARD COUNTY OFFICE OF PLANNING & ZONING
Thomas Hamon DATE: 7-16-79
 DIRECTOR

CHIEF DIVISION OF LAND DEVELOPMENT
William T. Rowe DATE: 7-16-79

APPROVED FOR PUBLIC WATER SANITARY SEWER STORM DRAINAGE SYSTEM & ROADS
 HOWARD COUNTY DEPARTMENT OF PUBLIC WORKS
William T. Rowe DATE: 7-12-79
 DIRECTOR

CHIEF BUREAU OF ENGINEERING
William T. Rowe DATE: 7-11-79



OWNER & DEVELOPER
 CHATHAM LIMITED PARTNERSHIP II
 8650 BALTIMORE NATIONAL PIKE
 ELLICOTT CITY, MARYLAND
 21043

SEDIMENT CONTROL 2
 CHATHAM GARDEN APTS.

SECTION 2
 PARCEL "B"

SHEET 6 OF 6

P.B. 4332

SDP-78-53

66032B