

- STORM DRAINAGE NOTES**
- All storm drainage shall be constructed in accordance with the latest addition of the Standard Specifications of Howard County.
  - Types of structures refer to the Standard Storm Drainage Details of Howard County unless otherwise noted.
  - Where the drop in the main line thru a structure can be accommodated by an invert slope of 1/2 to 1 or flatter, a rounded channel with sewer brick on edge shall be built to the crown of the pipes.
  - All storm drainage elevations are invert elevations unless otherwise noted.
  - Information concerning underground utilities was obtained from available records, but the Contractor must determine the exact locations and elevations of the mains by digging test pits by hand at all crossings well in advance of trenching. If clearances are less than shown on plans or 12 inches, whichever is less, contact Howard County before proceeding with construction.
  - Adjustments or repair to utilities due to Contractor negligence or method of operation will be made at his expense.
- LANDSCAPE PLANS**
- PLAN A  
Screen planting of 4' evergreen trees at 5' centers along property line, with 5' high chain link fence.
- GENERAL**
- Total Acreage = 8.764 Flood Plain + 25% Slopes = 4.74 Ac.
  - Net Building Area = 4,064 Ac.
  - Total No. of Apartment Units Allowed = 60
  - Total No. of Apartment Units Provided = 60
  - Total No. of Parking Spaces required = 90 Spaces provided = 90
  - Spaces = 200 Sq. Ft. ; 10 x 20
  - All Streets and Parking Private
  - Existing Zoning = RA-1 (SEE BACASE-932.)
  - Coverage - Buildings = 21,160 Sq. Ft. = 5.5 %
  - D = Dumpster Pad - 6' x 10' Concrete Slab
  - 22 Units 1BR+1Bath Area each = 682.85 Sq. Ft. Total 15,242.7 Sq. Ft.
  - 2 Units 1BR+1Bath+Den " = 769.51 Sq. Ft. " 1,539.0 Sq. Ft.
  - 33 Units 2BR+1/2 Bath " = 939.04 Sq. Ft. " 3,048.35 Sq. Ft.
  - 3 Units 2BR+1/2 Bath+Den " = 2,015.7 Sq. Ft. " 3,047.1 Sq. Ft.
  - Paving & Sidewalks = 53,836 Sq. Ft. 14% Open Space 7,044 = 80.5%
  - 4 Units for Handicapped-Bldg #2 - 2BR + 1 1/2 Bath - Ground Floor
- PAVING NOTES**
- No construction shall be undertaken until the proper permits have been obtained from the supervising agencies.
  - All work shall be done in accordance with the Howard County Roads construction Code & Standard Specifications.
  - Trim edge of existing paving to form a clean, straight, vertical joint.
  - For typical paving sections see Howard County Roads Construction Code Drawing No. D-13, Pg. 60.
  - All parking spaces to be 10 x 20, or 12 x 20 handicapped.
  - Concrete curb and gutter shall be used throughout the area in Dwg. D-40, Pg. 95, Howard County road code.
  - D = dumpster location, 6' x 10' concrete slab (construction to match sidewalks), with 6' x 10' concrete apron.
  - For storm drainage, interrupt walk as shown in detail on sheet 2 of 8.

**APPROVED:** For public water and public sewerage, Storm Drainage, Systems and public roads Howard County Department  
*Richard J. Stuenkel* 10/6/78  
 Chief Bureau of Planning

**APPROVED:** For public water and public sewerage Systems - Howard County Health Department  
*James J. Ryan* 10-13-78  
 Chief Health Officer

**APPROVED:** Howard County Office of Planning & Zoning  
*Thomas J. Smith* 10-18-78  
 Planning Director  
*John W. Murrison* 10-18-78  
 Chief, Division of Land Development

**DEVELOPER:** BOURGHOUGH STORCH, ET AL.  
 6930 BALTIMORE STREET  
 SAVAGE, MARYLAND 20865  
 301-725-6300

**ENGINEERING:** TUDINGS - OHEIM ASSOC., INC.  
 JACK S. FEICK, ENGINEER  
 8370 COURT AVENUE  
 ELLICOTT CITY, MARYLAND  
 301-465-0660

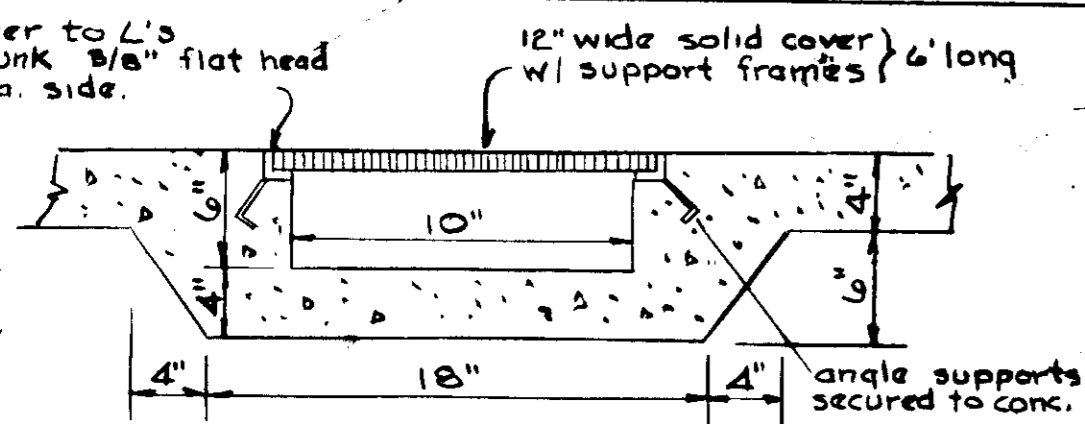
**SITE AND STORM DRAIN PLAN**  
**STORCH WOODS**  
 Section Two, Tax Map 47  
 Sixth Election District  
 Savage, Maryland  
 P.B. No. 4098

Scale: 1" = 20'  
 Date: 3-24-78  
 Drawn: JSF

SHEET 1 of 8

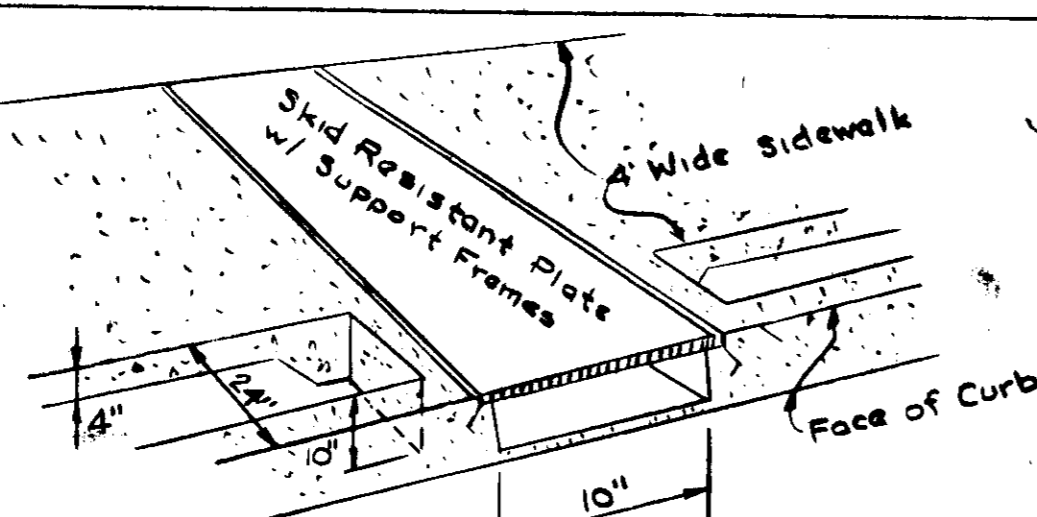
SDP-78-34 Printed 8-3-78

secure cover to L's w/ countersunk 3/8" flat head bolts - 3 ea. side.

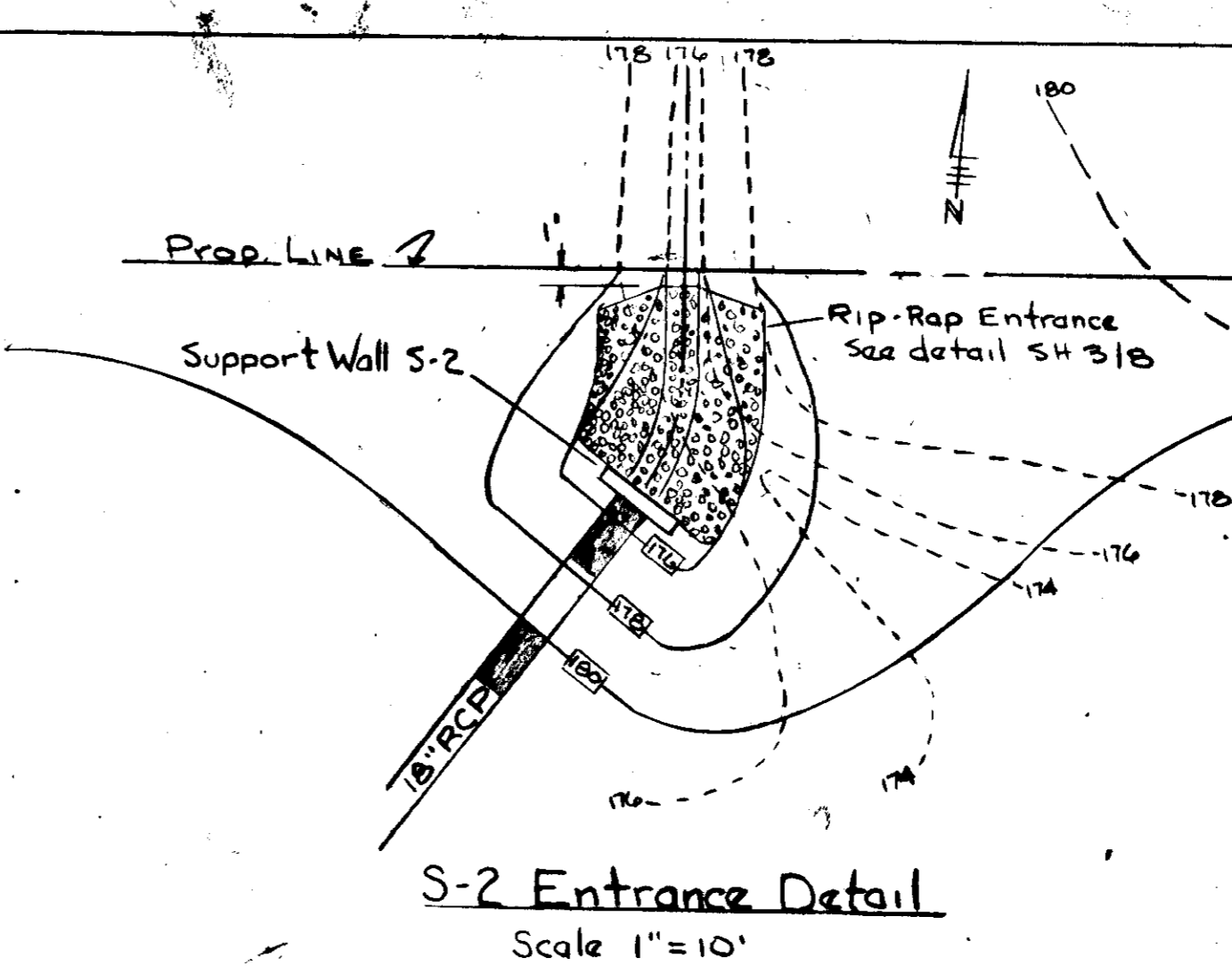
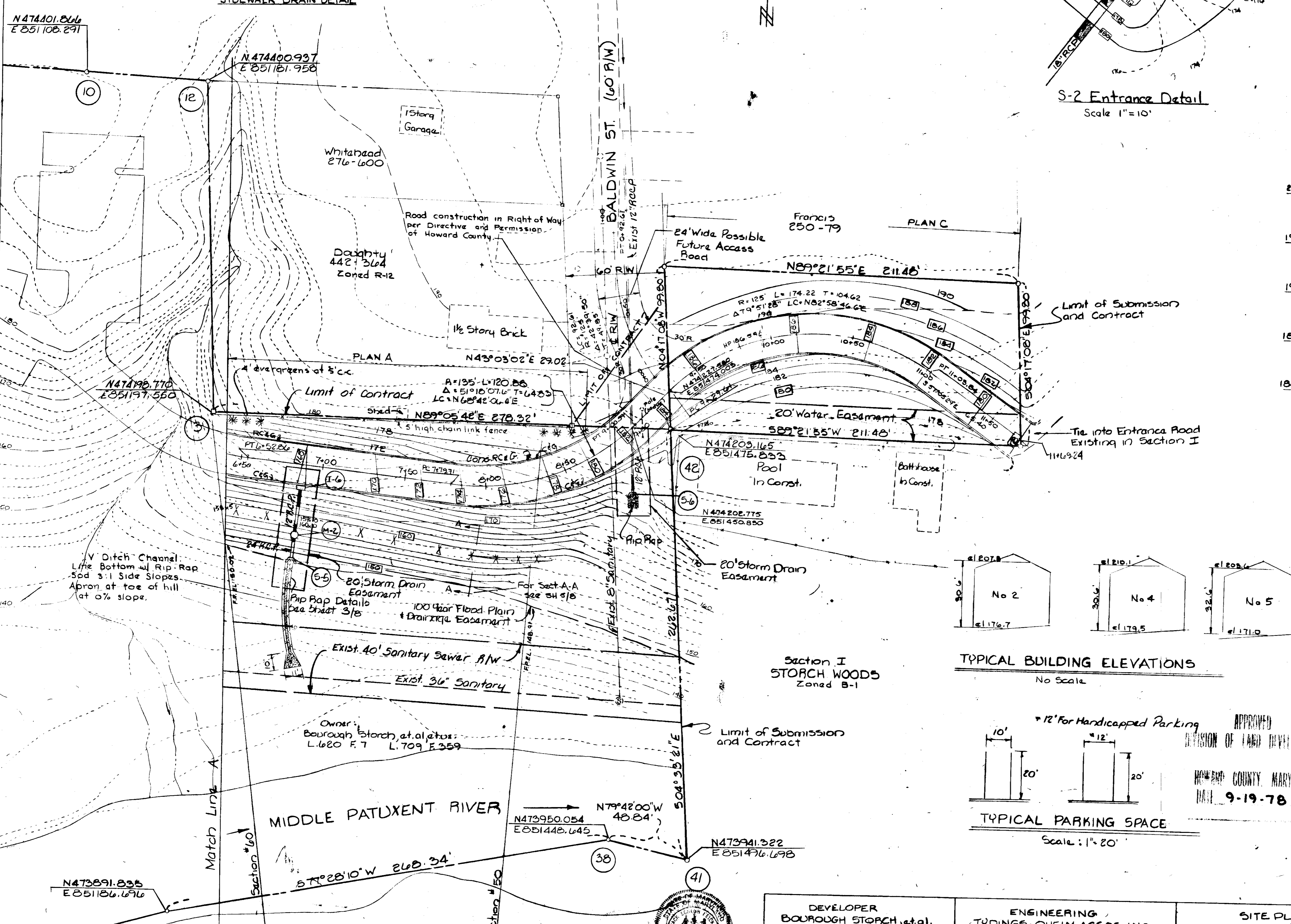


SECTION

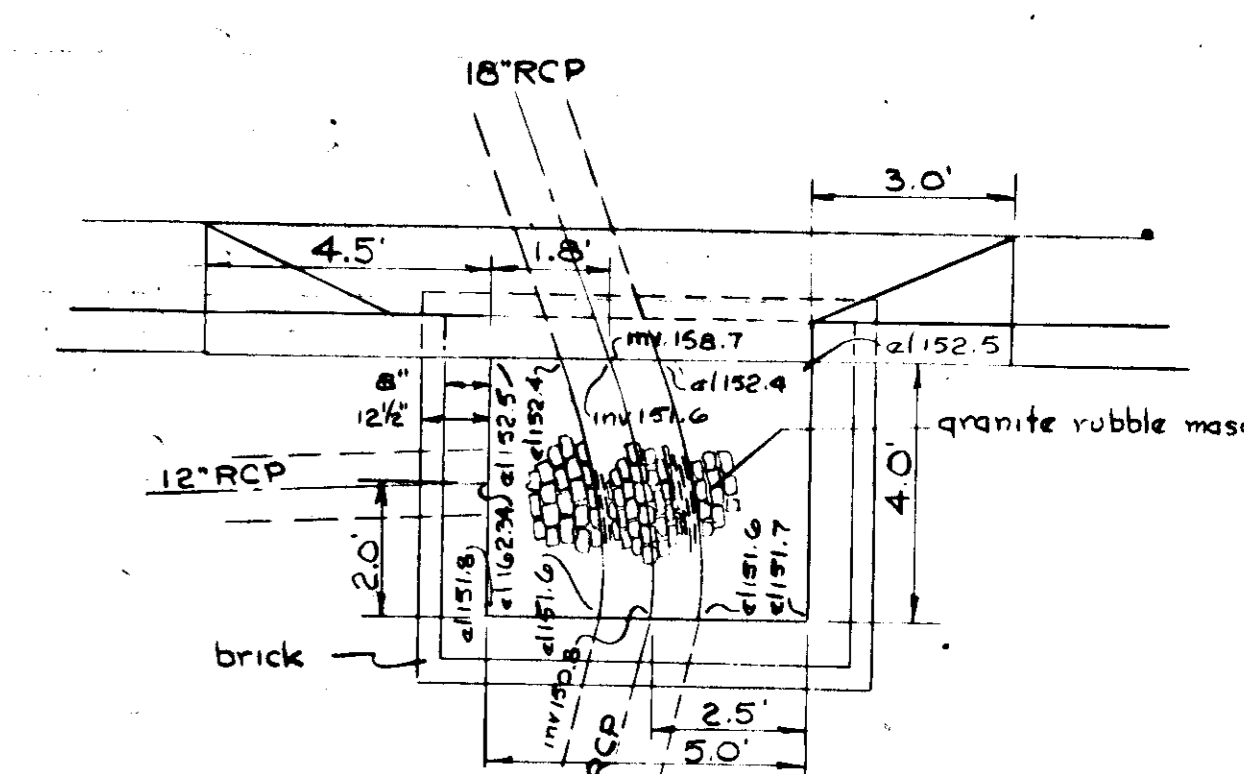
SIDEWALK DRAIN DETAIL



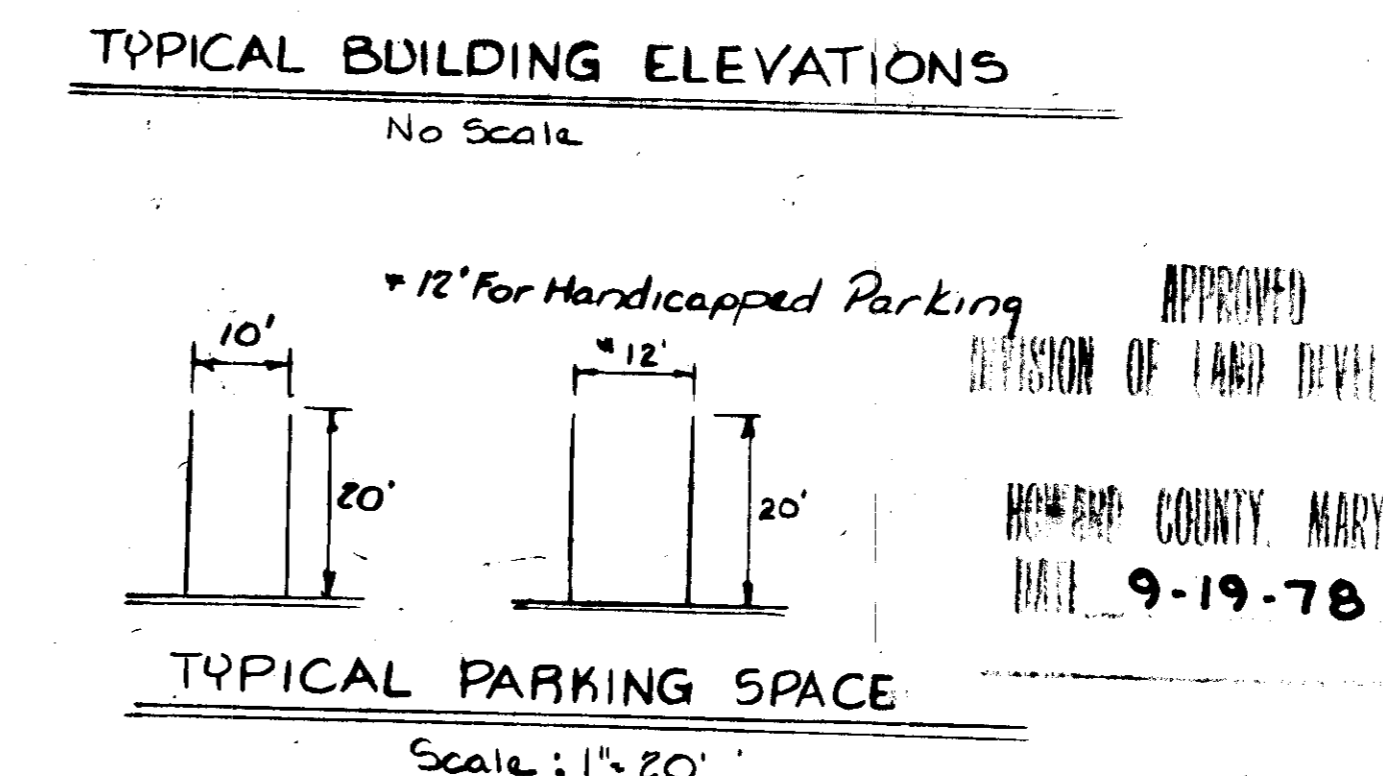
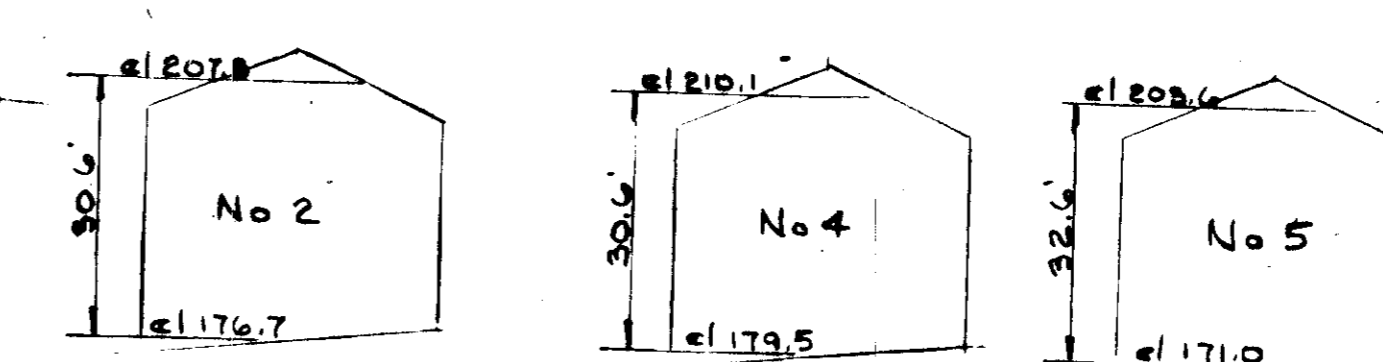
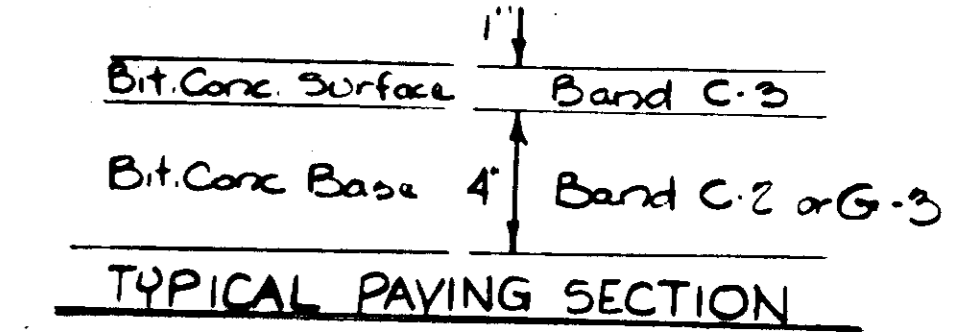
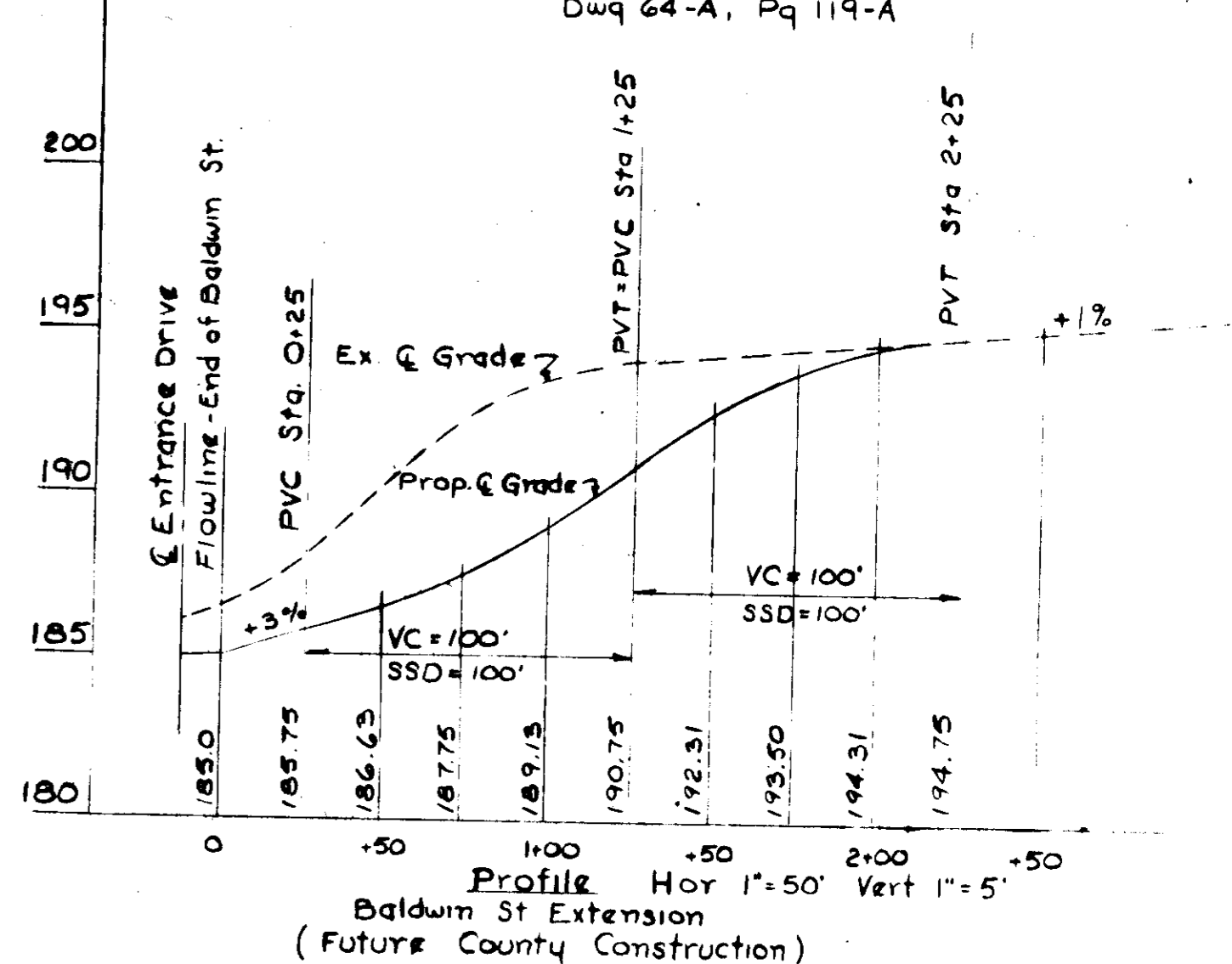
BALDWIN ST. (60' R/W)



S-2 Entrance Detail  
Scale 1"=10'

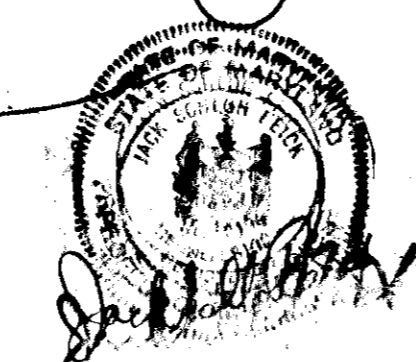


PLAN  
Detail - Inlet I-3  
Class A-5 Inlet  
Dwg 64-A, Pg 119-A



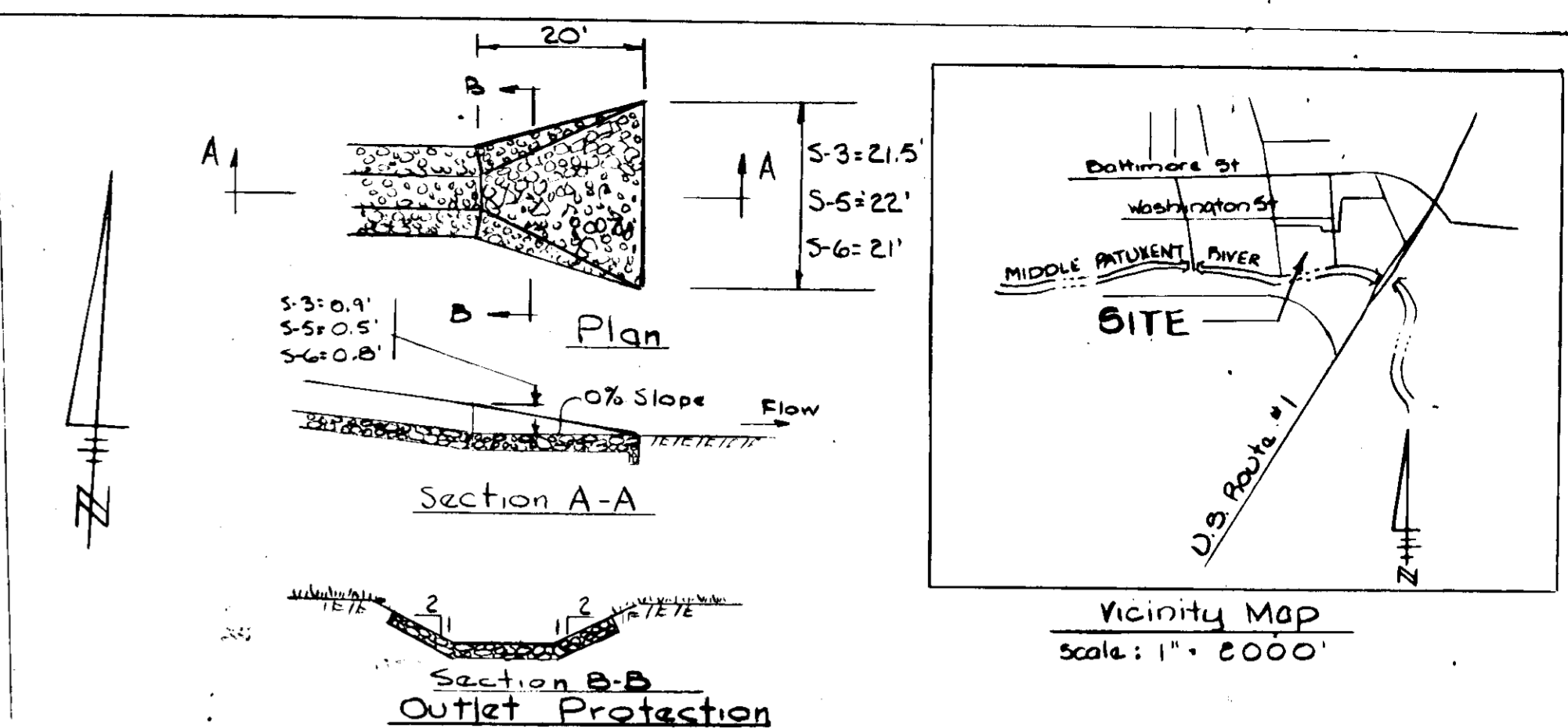
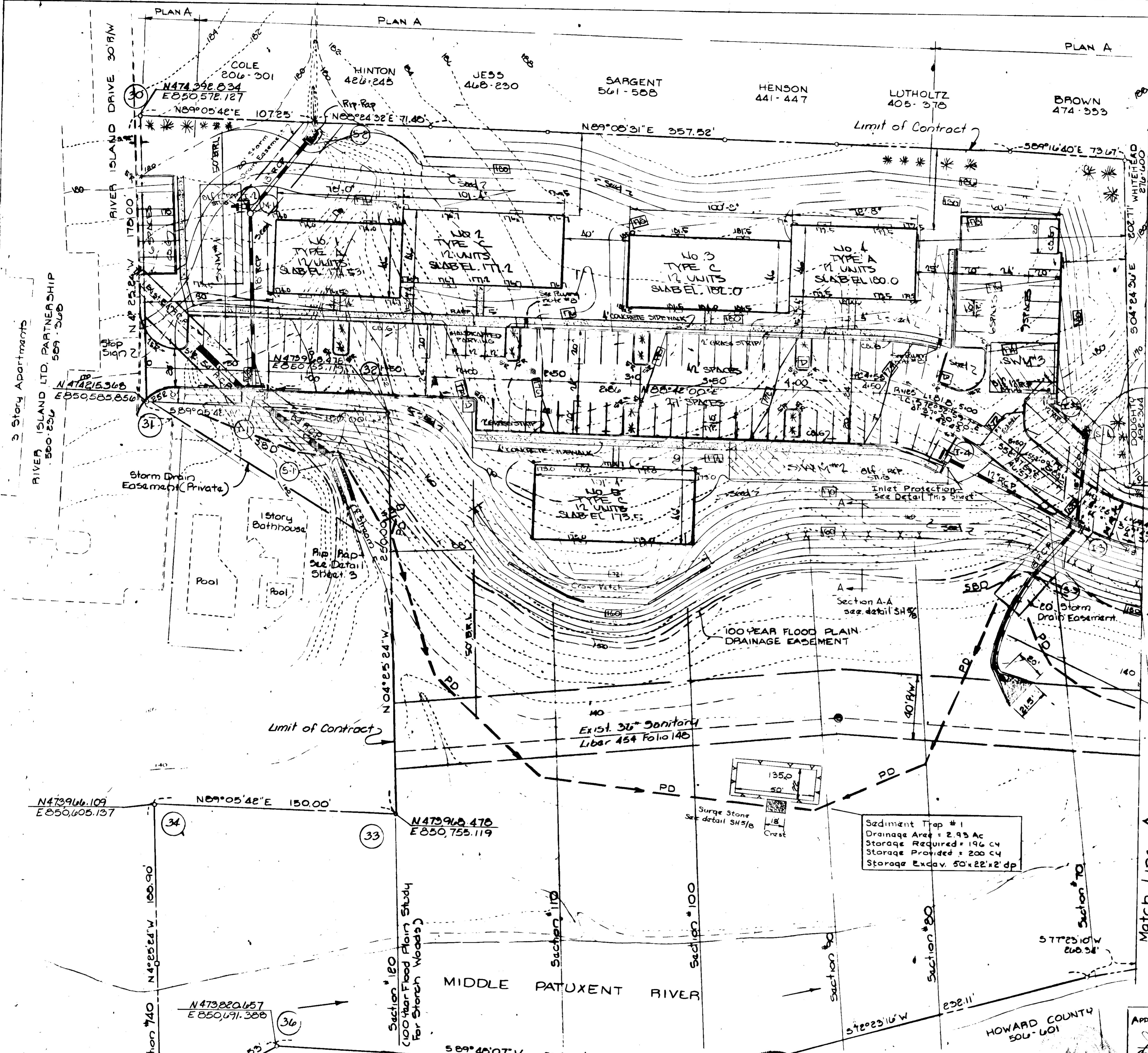
A. A tack coat is required in accordance with Section C-31.4 of the Howard County Road & Construction Code & Standard Specifications.  
B. Bases will be primed in accordance with Section C-30.3 of the Howard County Road & Construction Code & Standard Specifications.

APPROVED: For Public Water and Public Sewerage Systems, Howard County Health Department  
*Joyce Butler*  
County Health Officer  
10-13-78  
Date  
APPROVED: Howard County Office of Planning & Zoning  
*James J. Davis*  
Planning Director  
10-18-78  
Date  
*John W. Muschman*  
Chief, Division of Land Development  
10-18-78  
Date  
APPROVED: For Public Water and Public Sewerage, Storm Drainage Systems and Public Roads, Howard County Department of Public Works  
*Richard E. Freudenberger*  
Director  
10/6/78  
Date  
*W. P. Albert*  
Chief, Bureau of Engineering  
10-6-78  
Date



|   |   |   |                  |                 |
|---|---|---|------------------|-----------------|
| DEVELOPER<br>BOUROUGH STORCH, et al.<br>8950 BALTIMORE STREET<br>SAVAGE, MARYLAND 20863<br>301-725-6300 | ENGINEERING<br>TYDINGS-CHEIM ASSOC., INC.<br>JACK S. FEICK, ENGINEER<br>8370 COURT AVENUE<br>ELLCOTT CITY, MARYLAND<br>301-465-0660 | SITE PLAN AND GENERAL LAYOUT<br><b>STORCH WOODS</b><br>Section Two, Tax Map 47<br>Sixth Election District<br>Savage, Maryland<br>18, No. 4058 | Scale:<br>1"=30' | Sheet<br>2 of 8 |
|---|---|---|------------------|-----------------|





**STORM DRAINAGE NOTES**

- All storm drainage shall be constructed in accordance with the latest edition of the Standard Specifications of Howard County.
- Types of structures refer to the Standard Storm Drainage Details of Howard County unless otherwise noted.
- Where the drop in the main line thru a structure can be accommodated by an invert slope of 1% to 1 or flatter, a rounded channel with sewer brick on edge shall be built to the crown of the pipes.
- All storm drainage elevations are invert elevations unless otherwise noted.
- Information concerning underground utilities was obtained from available records, but the Contractor must determine the exact locations and elevations of the mains by digging test pits by hand at all crossings well in advance of trenching. If clearances are less than shown on plans or 12 inches, whichever is less, contact Howard County before proceeding with construction.
- Adjustments or repair to utilities due to Contractor's negligence or method of operation will be made at his expense.

Note: Traffic control devices, including location, types, styles, installation, marking, and signing shall be in accordance with the "Manual of Uniform Traffic Control Devices", 1971 Edition.

Note: Sidewalks adjacent to parking shall have 2' grass strip between curb and walk.

Note: All driveways and parking facilities within this subdivision are private.

9-19-78

**LANDSCAPE PLANS**  
 PLAN A:  
 SEE NOTE ON SHEET 1 OF 3

**GENERAL**

- Total Acreage = 8.764 Flood Plain @ 25% Slopes = 4.7Ac.
- Net Building Area = 4,064 Ac.
- Total No. of Apartment Units Allowed = 61
- Units Provided = 60
- Total No. of Parking Spaces required = 90 Spaces provided = 70
- Spaces = 200 Sq. Ft. ; 10 x 20
- All Streets and Parking Private
- Existing Zoning = RA-1
- Coverage - Buildings = 21,160 Sq. Ft. = 55 %
- D = Dumpster Pad - 6 x 10' Concrete Slab
- 22 Units 1 BR + 1 Bath Area each = 692.05 Sq. Ft. Total 15,242.7 Sq. Ft.
- 2 Units 1 BR + 1 Bath, Dan = 704.51 Sq. Ft. = 1,599.0 Sq. Ft.
- 33 Units 2 BR + 1 Bath = 9,990.2 Sq. Ft. = 30,988.35 Sq. Ft.
- 3 Units 2 BR + 1 Bath, Dan = 1015.7 Sq. Ft. = 3,047.1 Sq. Ft.
- Paving & Sidewalks = 53,836 SF = 14% Open Space 7,044 = 85.5%

**Legend**

- 20' High - Surface Mounted 250W Sodium Light

Note - See Variance Petition # BA-932-C

APPROVED: *Wendell Condotta* 10/17/78  
 U.S. Soil Conservation Service

This development plan is approved for Soil Erosion and Sediment Control by the Howard Soil Conservation District.

APPROVED: *Wes Egan* 10-3-78  
 Howard S.C.D.

I certify that this plan for erosion and sediment control represents a practical and workable plan based on my personal knowledge of the site conditions, and that it was prepared in accordance with the requirements of the Howard County Soil Conservation District.

*Jack S Feick* 9/15/78  
 Date

I certify that all development and/or construction will be done according to this plan of development and plan for erosion and sediment control, and I also a thorough periodic on-site inspection by the Howard Soil Conservation District or their authorized agents, as are deemed necessary.

Developer: *Storch Woods* 9/15/78  
 Date

APPROVED: *Howard County Office of Planning & Zoning* 10-18-78  
 Planning Director  
 Date

APPROVED: *Howard County Health Department* 10-18-78  
 County Health Officer  
 Date

APPROVED: For public water and public sewerage, Storm Drainage Systems and public roads Howard County Department of Public Works  
*Richard G. Stuber* 10/6/78  
 Director  
 Date

DEVELOPER  
 BOURBON STORCH, ET AL.  
 2930 BALTIMORE STREET  
 SAVAGE, MARYLAND 20865  
 301-725-6300

ENGINEERING  
 TUDING'S OHEIM ASSOC., INC.  
 JACK S FEICK ENGINEER  
 8370 COURT AVENUE  
 ELLICOTT CITY, MARYLAND  
 301-465-0660

EROSION & SEDIMENT CONTROL  
**STORCH WOODS**  
 Section Two, Tax Map 47  
 Sixth Elation District  
 Savage, Maryland  
**SDP-78-34**

Scale: 1" = 20'  
 Date: 9-24-78  
 Drawn: JSF

SHEET 4 of 8

Printed 9-23-78

**EROSION & SEDIMENT CONTROL NOTES**

All siltation control work to be in accordance with standards and specifications of the Howard County Soil Conservation District Sediment Control Program and U.S. Soil Conservation Service.

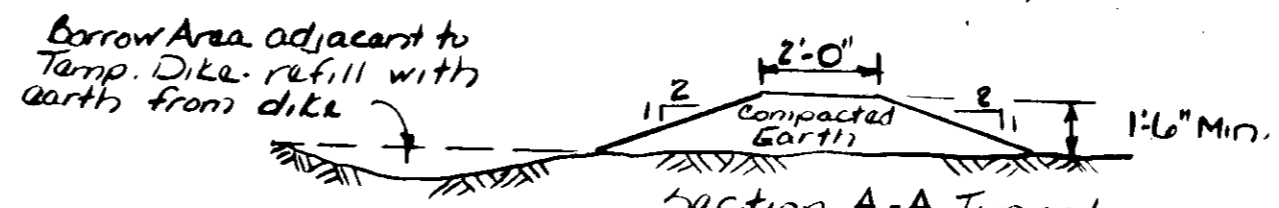
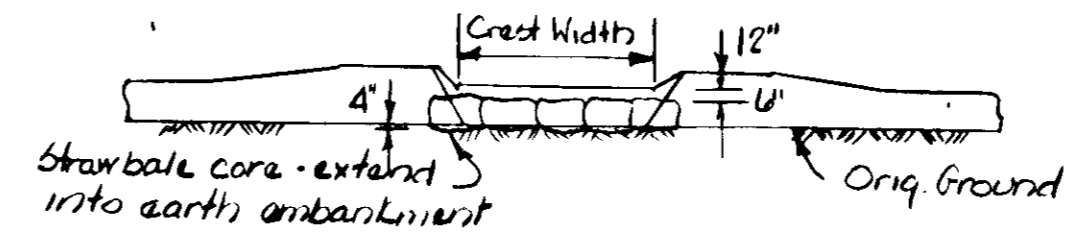
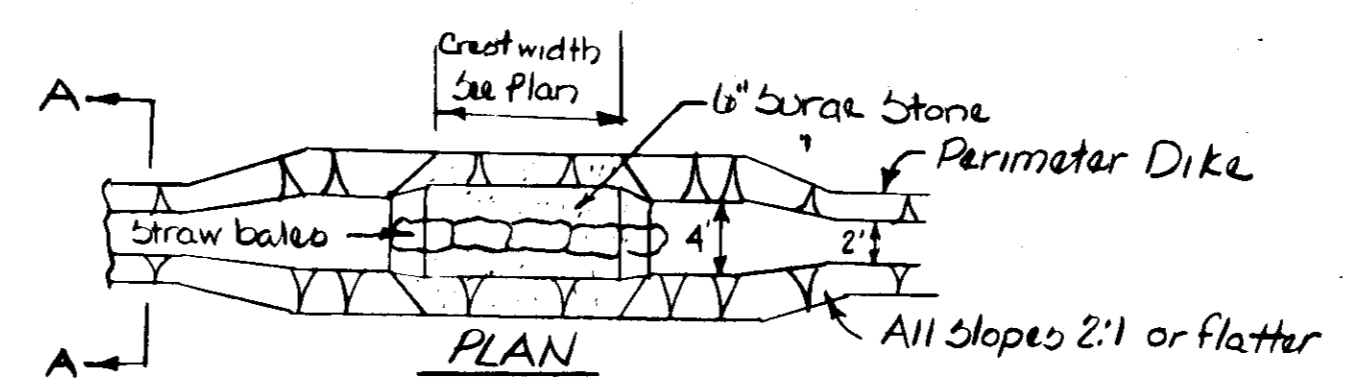
Total Disturbed Area = 3.5 Ac.

**ESTIMATED PHASING & SCHEDULING OF DEVELOPMENT**

- All sediment control measures constructed First start June 1978
- Rough grade, fine grade, vegetate, start building start July 1978
- Complete final grading, paving, vegetation Oct., November 1978
- Maintenance and cleanup After November 1978

**SEEDING & SODDING REQUIREMENTS**

- Seeded Area approx 82,200 Sq. Ft.
- Seed to be Kentucky 31 Tall Fescue with 85% germination and 98% purity, on flat to 2:1 Slopes seeding on slopes steeper than 2:1 to be Crown Vetch & Kentucky 31, with 85% germination and 98% Min. purity.
- Plates: Seed K-31 5-7 #/1000 S.F.  
K-31 Crown Vetch - 2 lb crown Vetch & 5 lb. K-31 /1000 S.F.  
Min. Rates: Fertilizer 5-10-5 25 #/1000 S.F.  
Limestone 50 #/1000 S.F.  
Straw mulch 75 #/1000 S.F.  
Asphalt tie down 0.01 gal/S.F.
- Temporary seeding - Earth berm diked Seed-Ply grass 5 #/1000 S.F.  
Follow preparation rates of #3 above.
- Top soil to be spread over area to be seeded.
- Incorporate both lime and fertilizer into soil by disking.
- Contractor to construct and maintain earth berms daily.
- Berms and other control measures to be maintained until planting and other permanent improvements are stabilized.
- Predominate soil type: Leonardtown Silt loam and Montalto and relay very stony silt loams.
- Disturbed Area = 2.55 Acres. Undisturbed Area = 6.21 Acres.



Berms to be seeded with 5.3 #/1000 Sq. Ft. of ryegrass all other seeding preparations same as seeding specifications.  
SCS Standard Dwg. PD-1  
**EROSION CONTROL**

**Sediment Control Notes (Cont)**

- Obtain grading permit.
- Notify Howard County Dept of Inspections and Permits 72 hours before grading and clearing (992-2436)
- All Sediment Control Measures must be installed prior to any clearing, grubbing, or grading.

APPROVED: For public Water and Public Sewerage Systems, Howard County Health Department.  
*James Berlin* 10-13-78  
County Health Officer Date

APPROVED: Howard County Office of Planning and Zoning  
*Thomas J. Adams* 10-18-78  
Planning Director Date

*Mark S. Feick* 10-18-78  
Chief, Division of Land Development Date

APPROVED: For public Water, Public Sewerage, and Storm Drainage Systems and Floods.  
Howard County Department of Public Works  
*Richard E. Brantley* 10-6-78  
Director Date

*Wolfe* 10-6-78  
Chief, Bureau of Engineering Date

Reviewed for Howard S.C.D. and Meats technical requirements  
*Robert Smith* 10/3/78  
U.S. Soil Conservation Service Date

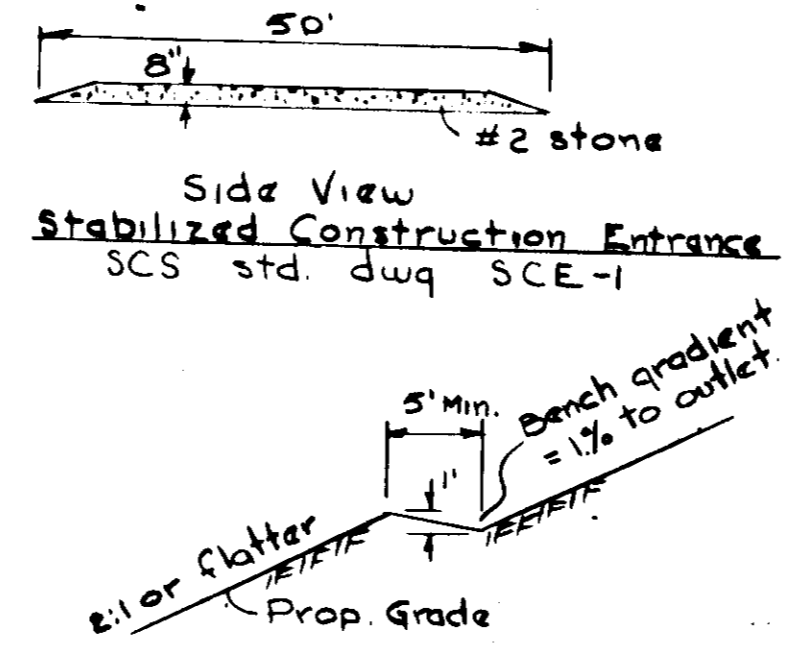
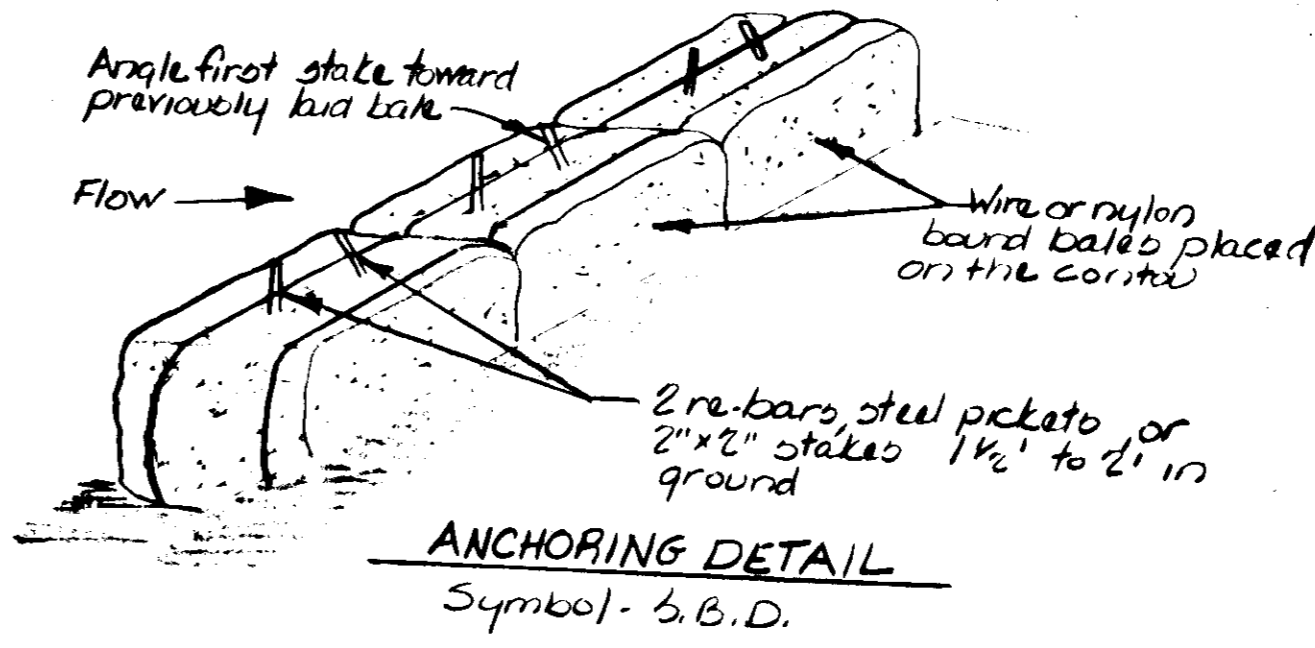
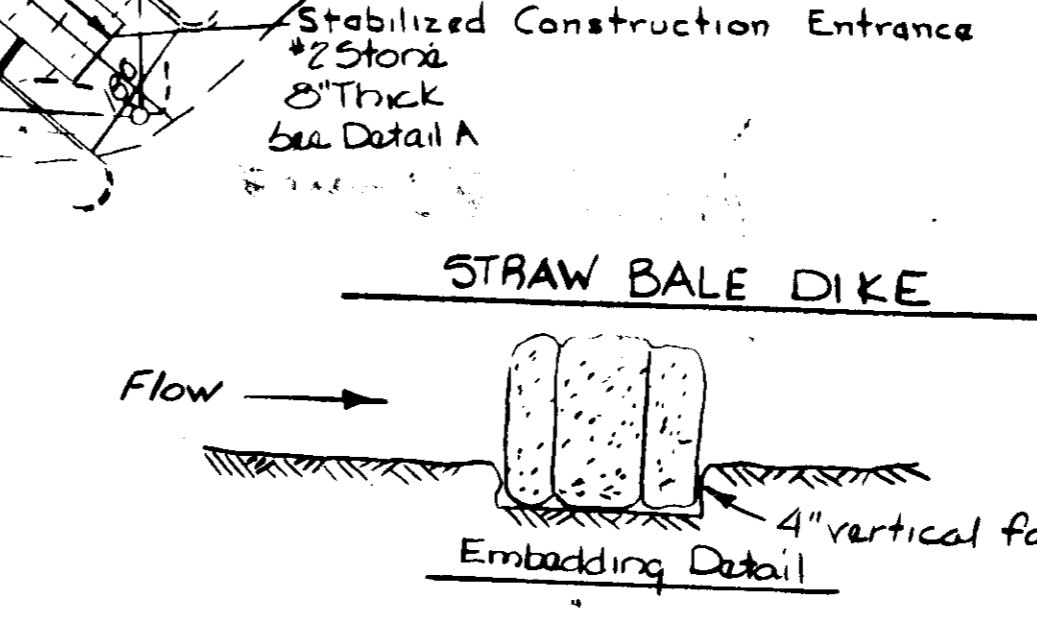
This development plan is approved for soil erosion and sediment control by the Howard Soil Conservation District.

APPROVED *Les EARP* 10-3-78  
Howard S.C.D. Date

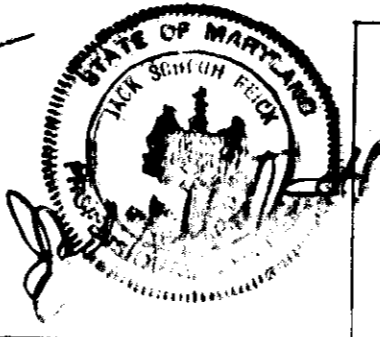
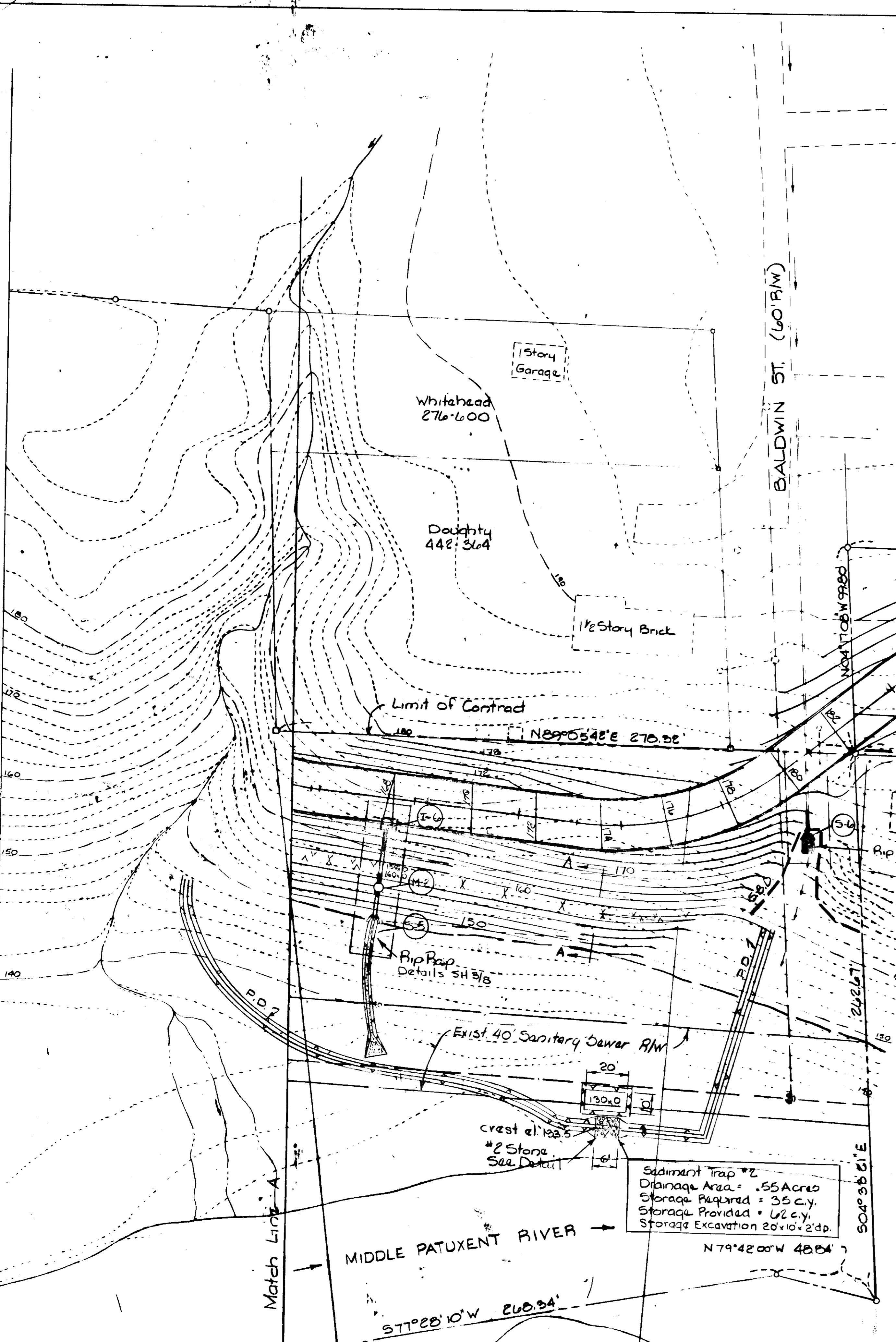
"I certify that this plan for erosion and sediment control represents a practical and workable plan based on my personal knowledge of the site conditions and that it was prepared in accordance with the requirements of the Howard County Soil Conservation District."  
*Jack S. Feick* 9-25-78  
9-11-78 Date

"I certify that all development and/or construction will be done according to this plan of development and plan for erosion and sediment control, and I also authorize periodic on-site inspection by the Howard Soil Conservation District or their authorized agents, as are deemed necessary."  
*Steven Storch* 9/25/78  
Developer Date

APPROVED  
DIVISION OF LAND DEVELOPMENT  
HOWARD COUNTY, MARYLAND  
DATE 9-19-78  
*AWP*



Section A-A  
For fills greater than 15' in height  
SCS Std Dwg LG-1

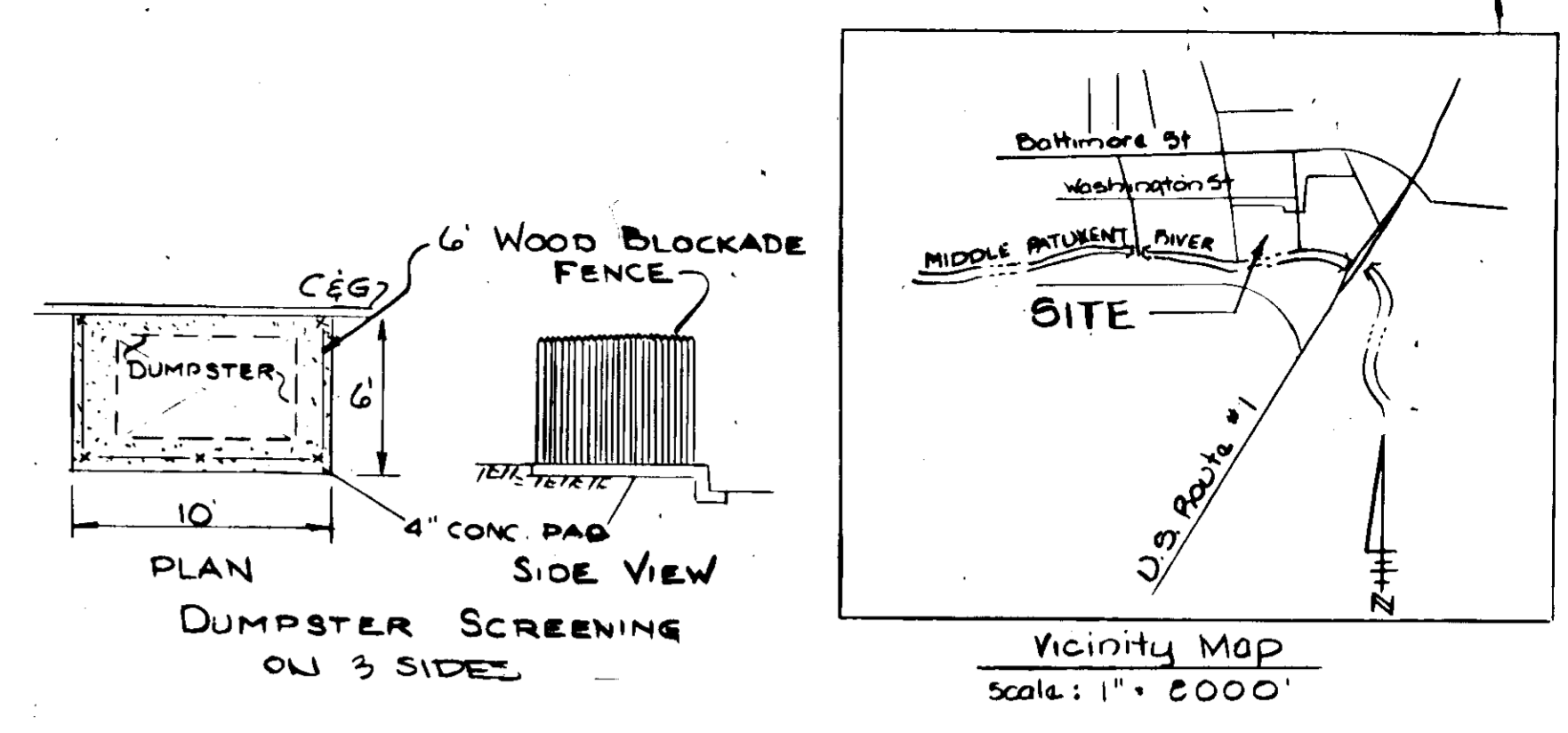


DEVELOPER  
BOUROUGH STORCH, ET AL.  
8950 BALTIMORE STREET  
SARGE, MARYLAND 20865  
301-725-6300

ENGINEERING  
TRIDINGS-OHEIM ASSOC, INC.  
JACK S. FEICK, ENGINEER  
8370 COLFAT AVENUE  
ELLCOTT CITY, MARYLAND  
301-465-0660

EROSION AND SEDIMENT CONTROL  
**STORCH WOODS**  
Section Two Tax Map 47  
Sixth Election District  
Savage, Maryland

|                  |        |
|------------------|--------|
| Scale:<br>1"=50' | SHEET  |
| Date:<br>3-24-78 | 5 of 8 |
| Drawn:<br>JSF    |        |



- ### STORM DRAINAGE NOTES
- All storm drainage shall be constructed in accordance with the latest addition of the Standard Specifications of Howard County.
  - Types of structures refer to the Standard Storm Drainage Details of Howard County unless otherwise noted.
  - Where the drop in the main line thru a structure can be accommodated by an invert slope of 1/2 to 1 or flatter, a rounded channel with sewer brick on edge shall be built to the crown of the pipes.
  - All storm drainage elevations are invert elevations unless otherwise noted.
  - Information concerning underground utilities was obtained from available records, but the Contractor must determine the exact locations and elevations of the mains by digging test pits by hand at all crossings well in advance of trenching. If clearances are less than shown on plans or 12 inches, whichever is less, contact Howard County before proceeding with construction.
  - Adjustments or repair to utilities due to Contractor's negligence or method of operation will be made at his expense.
- Note: Traffic control devices, including location, types, styles, installation, marking, and signing shall be in accordance with the "Manual of Uniform Traffic Control Devices", 1971 Edition.
- Note: Sidewalks adjacent to parking shall have 2' grass strip between curb and walk.
- Note: All driveways and parking facilities within this subdivision are private.

- ### GENERAL
- Total Acreage = 8.764 Flood Plain & 25% Slopes = 4.7 Ac.
  - Net Building Area = 4,064 Ac.
  - Total No of Apartment Units Allowed = 61
  - Total No. of Apartment Units Provided = 60
  - Total No. of Parking Spaces required = 90 Spaces provided = 70
  - Spaces = 200 Sq. Ft.; 10' x 20'
  - All Streets and Parking Private
  - Existing Zoning = RA-1
  - Coverage - Buildings = 21,600 Sq. Ft. + 5.5 %
  - D x Dumpster Pad - 6' x 10' Concrete Slab
  - 2 Units 1 BR + 1 Bath Area each = 692.85 Sq. Ft. Total 15,242.7 Sq. Ft.
  - 2 Units 1 BR + 1 Bath + Den " " = 769.51 Sq. Ft. " 1,539.0 Sq. Ft.
  - 35 Units 2 BR + 1 Bath " " = 9,390.2 Sq. Ft. " 30,988.35 Sq. Ft.
  - 3 Units 2 BR + 1 Bath + Den " " = 1,015.7 Sq. Ft. " 3,047.1 Sq. Ft.
  - Paving & Sidewalks = 53,836 Sq. Ft. 14% Open Space 7,044.8 Sq. Ft.
- ### PAVING NOTES
- No construction shall be undertaken until the proper permits have been obtained from the supervising agencies.
  - All work shall be done in accordance with the Howard County Roads Construction Code & Standard Specifications.
  - Trim edge of existing paving to form a clean, straight, vertical joint.
  - For typical paving sections see Howard County Roads Construction Code Drawing No. D-13, Pg. 60.
  - All parking spaces to be 10' x 20' or 12' x 20' handicapped.
  - Concrete curb and gutter shall be used throughout the area in Dwg. D-40, Pg. 95, Howard County road code.
  - D x dumpster location, 6' x 10' concrete slab (construction to match sidewalks)
  - For storm drainage, interrupt walk 4' width and cut top of curb 1/4" wide x 5" deep, recess edges of walks to receive 4' x 10' x 7/8" steel bridge plate with skid resistant raised pattern top face.

**Legend**  
 ◀ 20' High - Surface Mounted 250W Sodium Light

APPROVED  
 DIVISION OF LAND DEVELOPMENT  
 HOWARD COUNTY, MARYLAND  
 DATE: 9-19-78

Note: See Variance Petition #BA-72-C

APPROVED: For public water and public sewerage, Storm Drainage Systems and public roads Howard County Department of Public Works  
 Richard W. Winters  
 Chief Bureau of Engineering  
 10/6/78  
 10-6-78  
 DATE

DEVELOPER  
 BOURGHOUGH STORCH, ET AL.  
 6930 BALTIMORE STREET  
 SAVAGE, MARYLAND 20865  
 301-725-6300

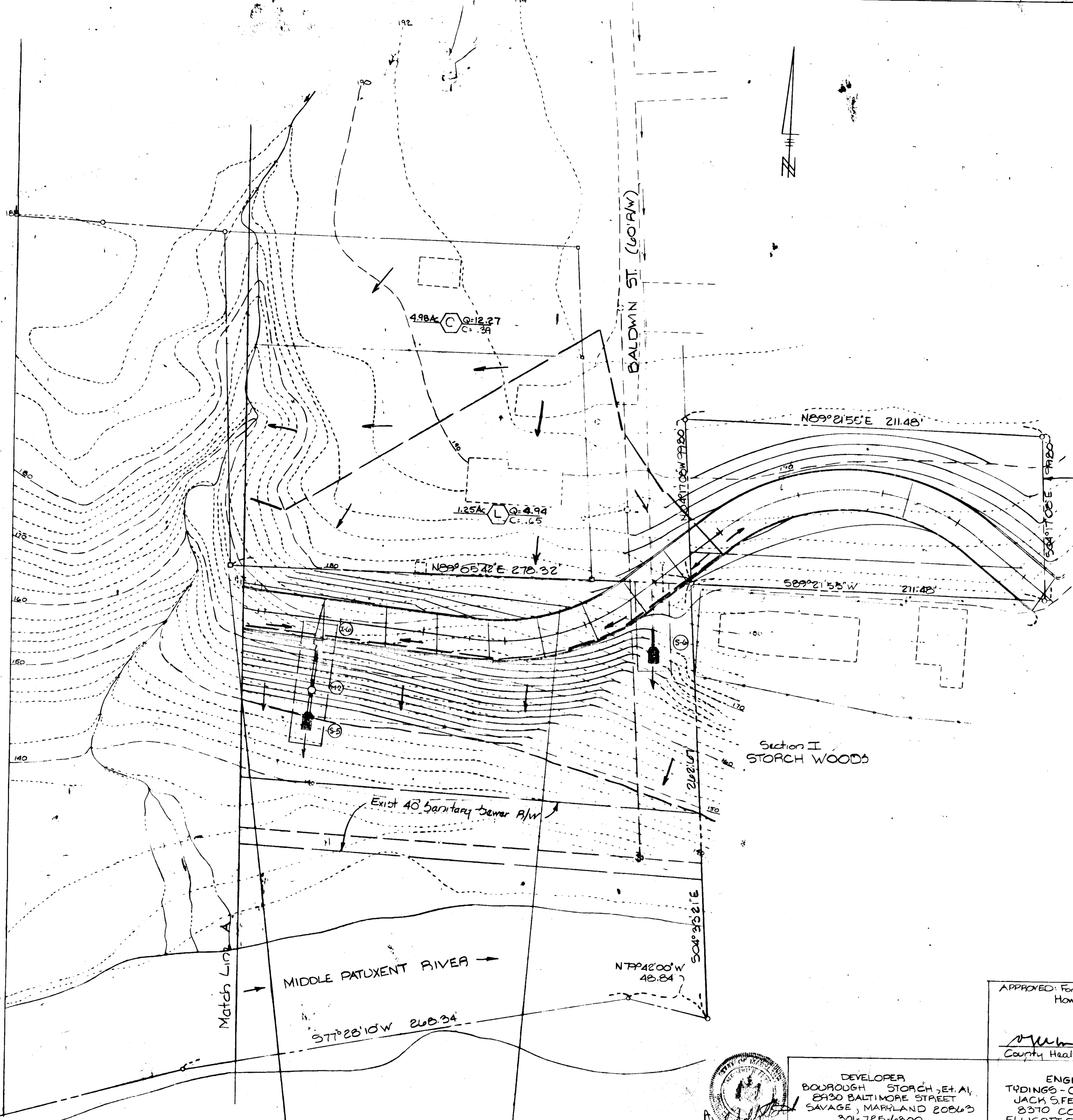
ENGINEERING  
 TYDINGS-OHEIM ASSOC. INC.  
 JACK S. FEICK, ENGINEER  
 8370 COURT AVENUE  
 ELLICOTT CITY, MARYLAND  
 301-465-0660

APPROVED: For public water and public sewerage Systems: Howard County Health Department  
 Suzanne Rogers  
 County Health Officer  
 10-13-78  
 Date

APPROVED: Howard County Office of Planning & Zoning  
 Planning Director  
 10-18-78  
 Date

DRAINAGE AREA MAP  
**STORCH WOODS**  
 Section Two, Tax Map 47  
 Sixth Election District  
 Savage, Maryland  
**SDP-78-34**

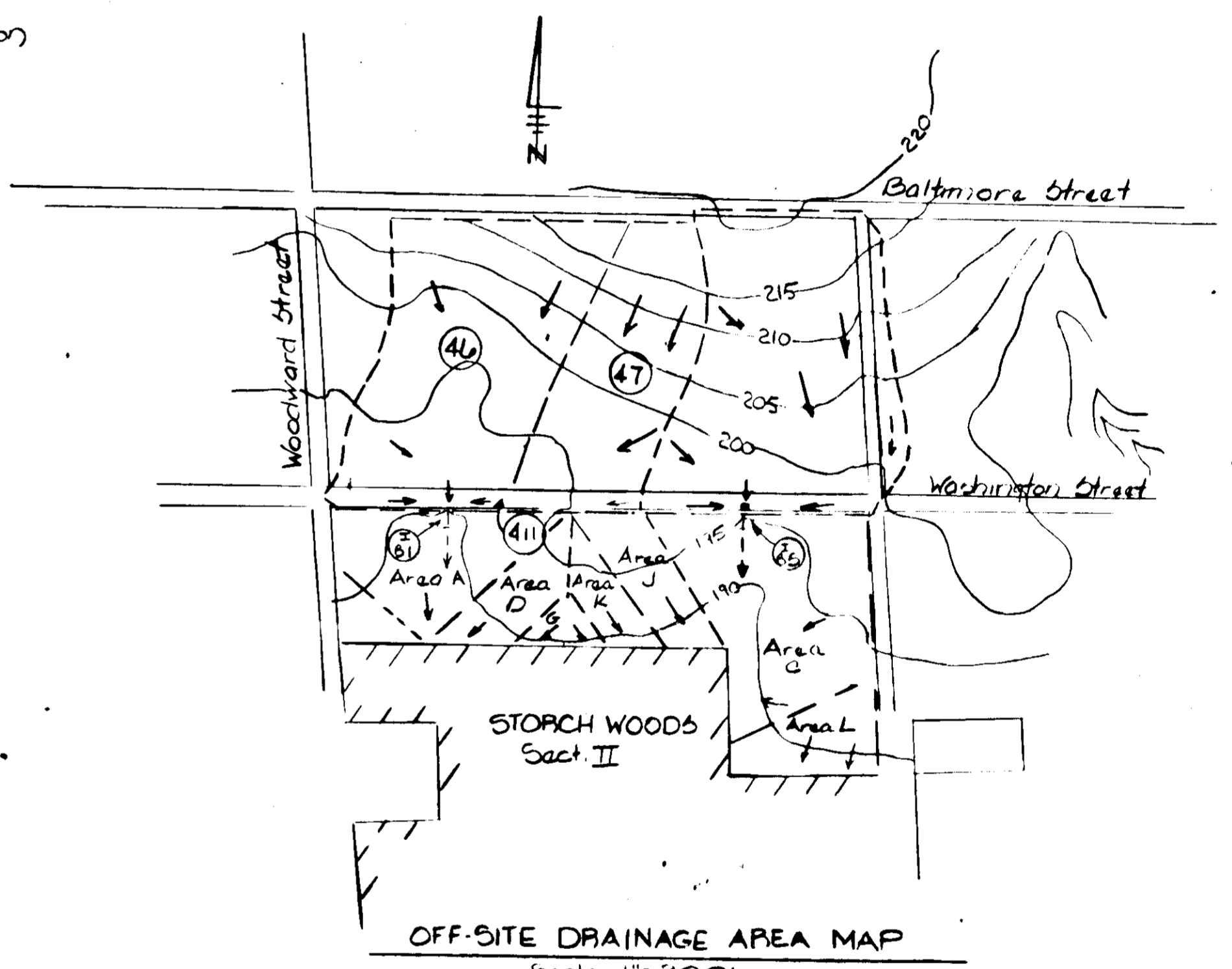
Scale: 1/2" = 1'-0"  
 Date: 3-24-78  
 Drawn: JSF  
 SHEET 6 of 8  
 Printed 8-3-78



Limit of Submission and Contract

Section I  
STORCH WOODS

MIDDLE PATUXENT RIVER



OFF-SITE DRAINAGE AREA MAP  
Scale 1"=200'  
Taken from Capitol Project D-6-1044

APPROVED  
DIVISION OF LAND DEVELOPMENT

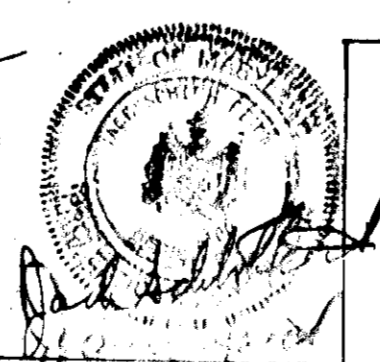
HOWARD COUNTY, MARYLAND  
Date: 9-19-78

APPROVED: Howard County Office of Planning & Zoning  
*Thomas J. Harris*  
Planning Director  
Date: 10-18-78

APPROVED: For Public Water and Public Sewerage Systems, Storm Drainage Systems and Public Roads Howard County Department of Public Works  
*Richard E. Fiedler*  
Director  
Date: 10-6-78

APPROVED: For Public Water and Public Sewerage Systems, Howard County Health Department  
*John Sullivan*  
County Health Officer  
Date: 10-13-78

APPROVED: Chief, Bureau of Engineering  
*W. J. [Signature]*  
Date: 10-6-78



DEVELOPER  
BOURROUGH STORCH, ET AL,  
2930 BALTIMORE STREET  
SAVAGE, MARYLAND 20863  
301-785-6900

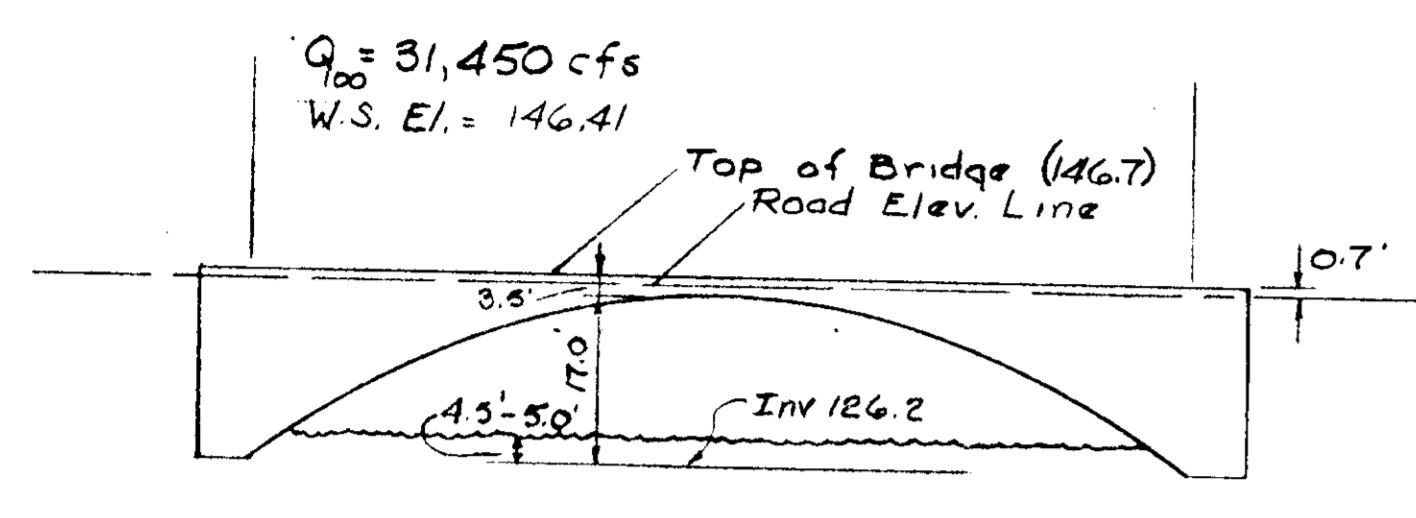
ENGINEERING  
TYDINGS-OHEIM ASSOC, INC  
JACK S. FEICK, ENGINEER  
8370 COURT AVENUE  
ELLCOTT CITY, MARYLAND  
301-465-0660

DRAINAGE AREA MAP  
**STORCH WOODS**  
Section Two, Tax Map 47  
Sixth Election District  
Savage, Maryland

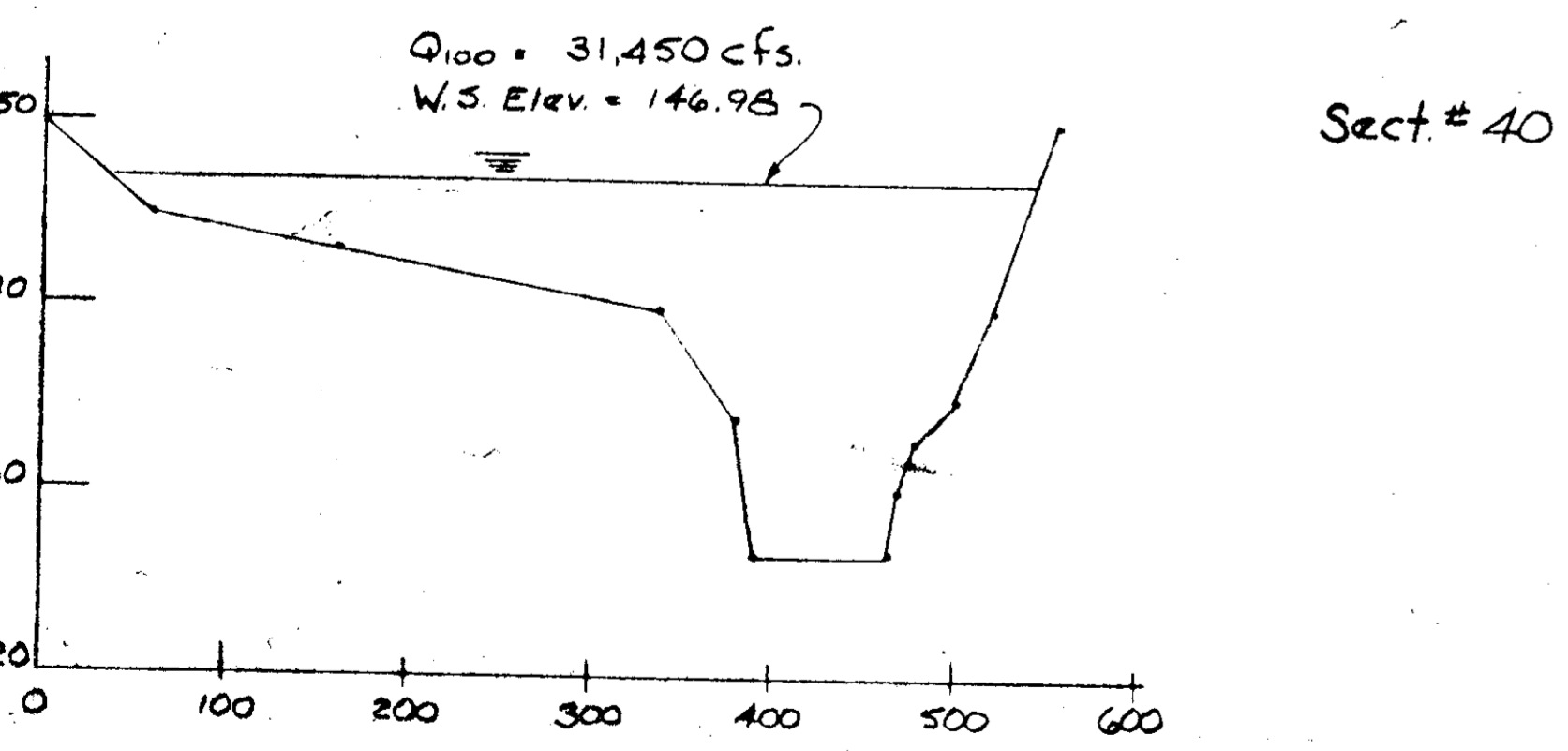
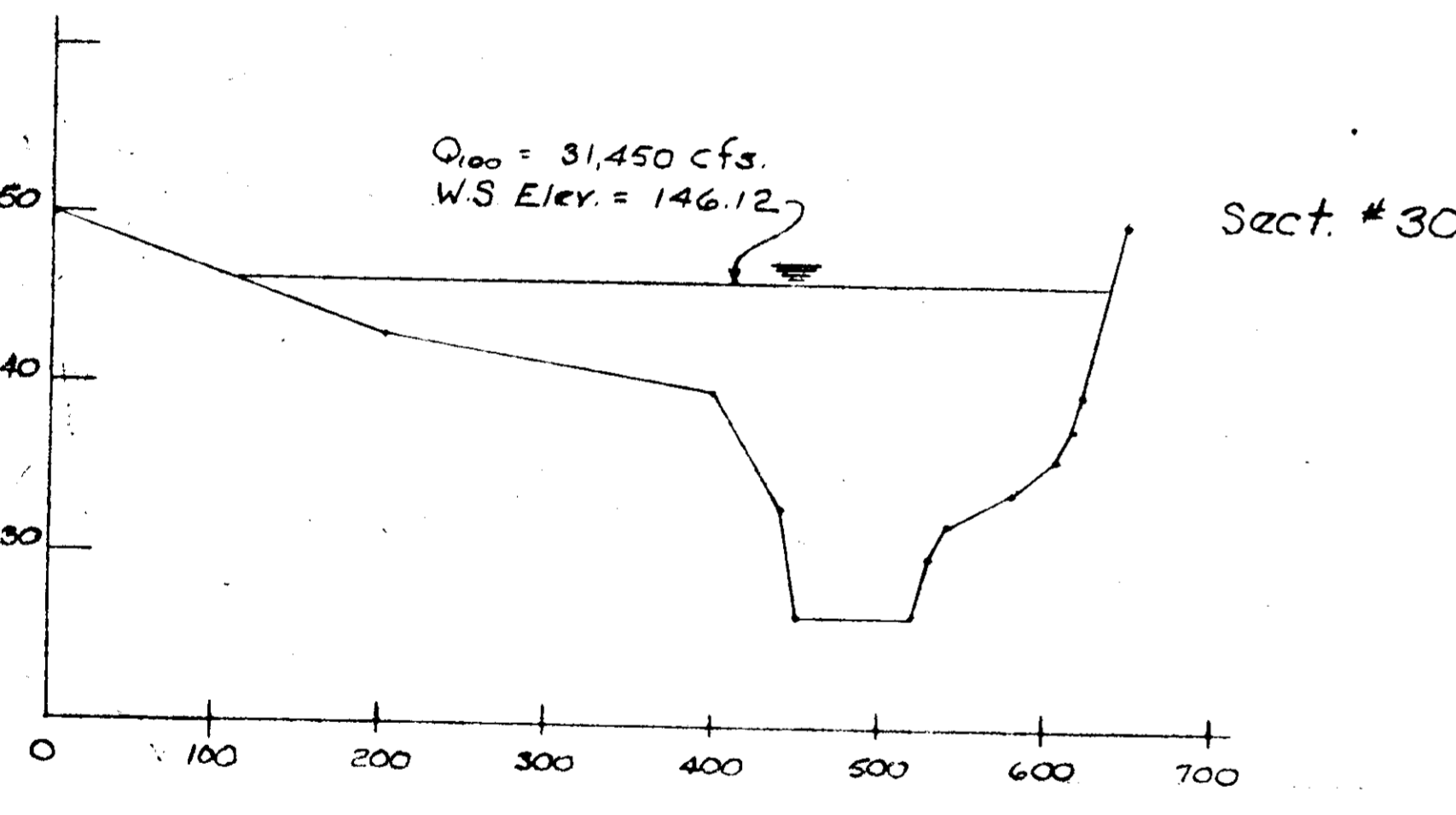
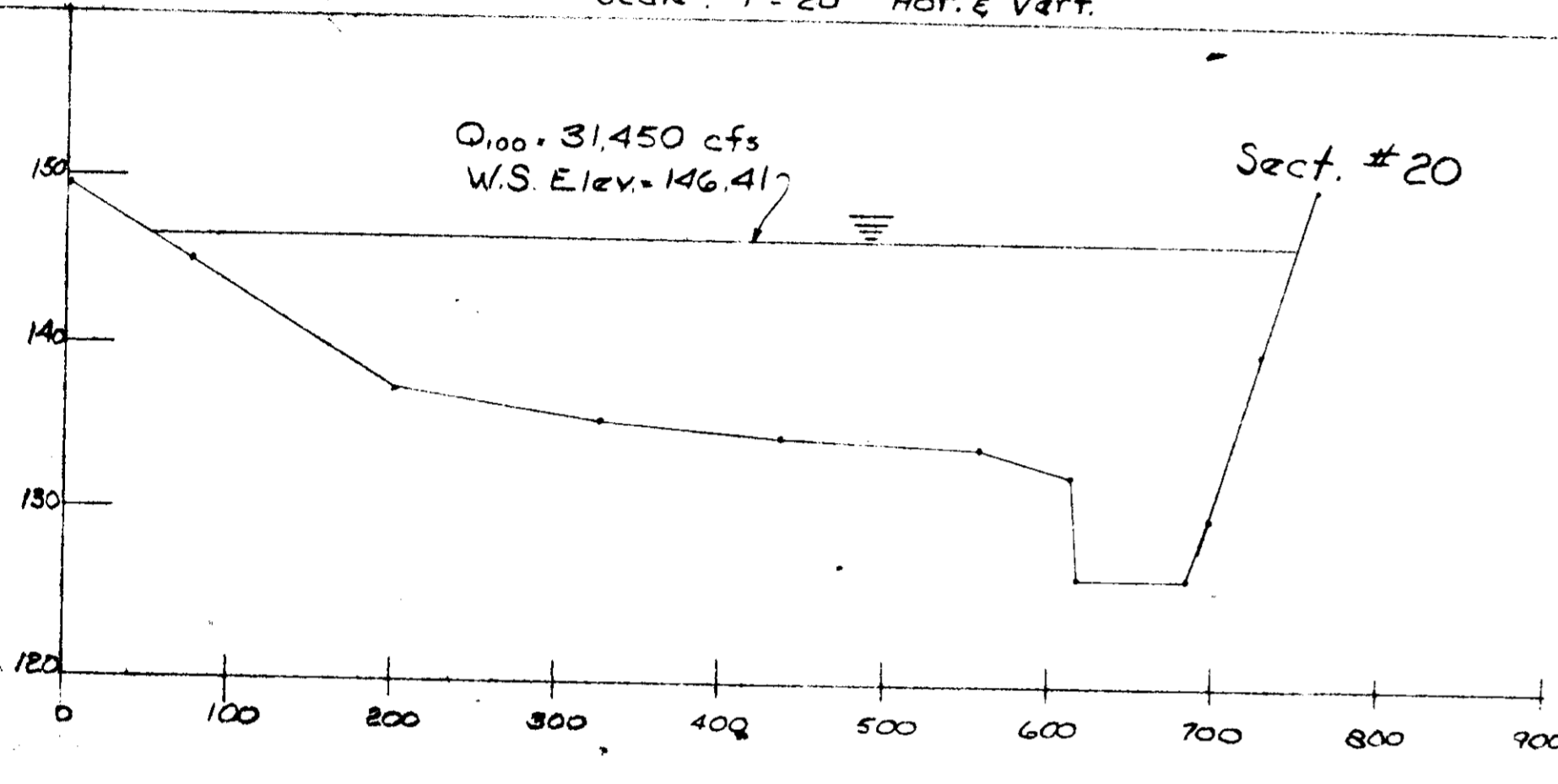
|                  |        |
|------------------|--------|
| Scale:<br>1"=30' | SHEET  |
| Date:<br>3-24-78 | 7 of 8 |
| Drawn:<br>JBF    |        |

3+47  
146.8      2+97  
145.7      2+00  
145.5      1+50  
144.1

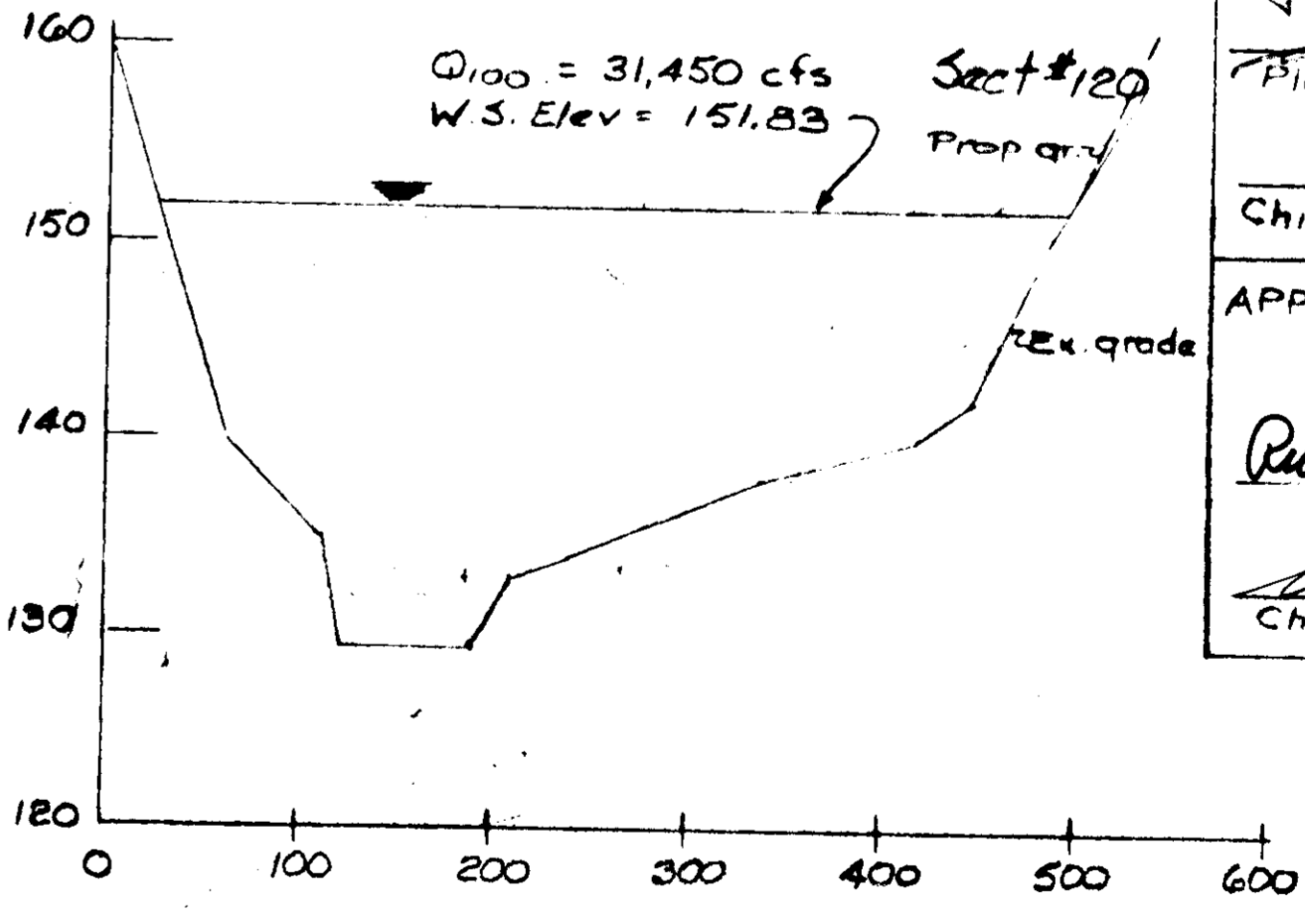
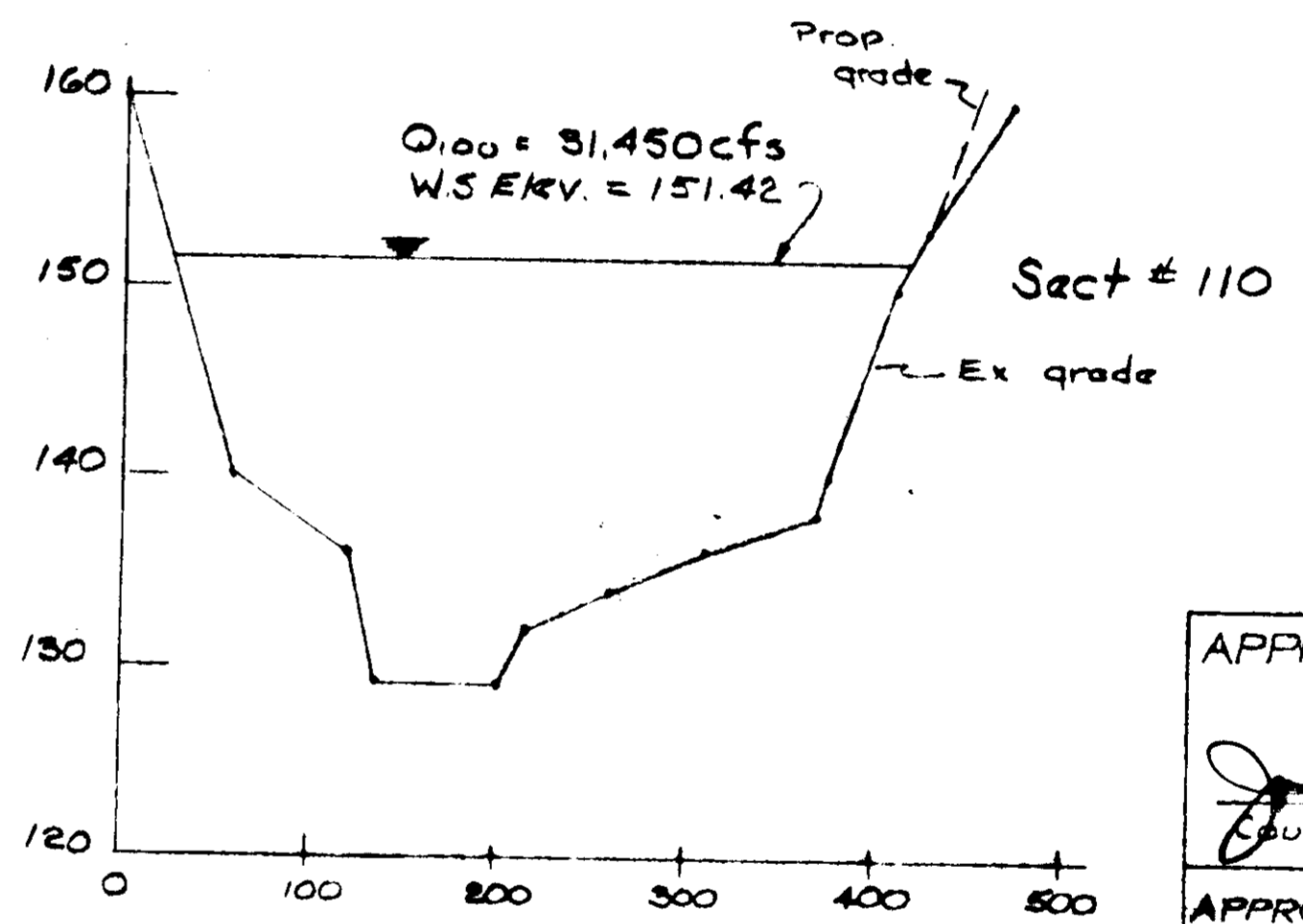
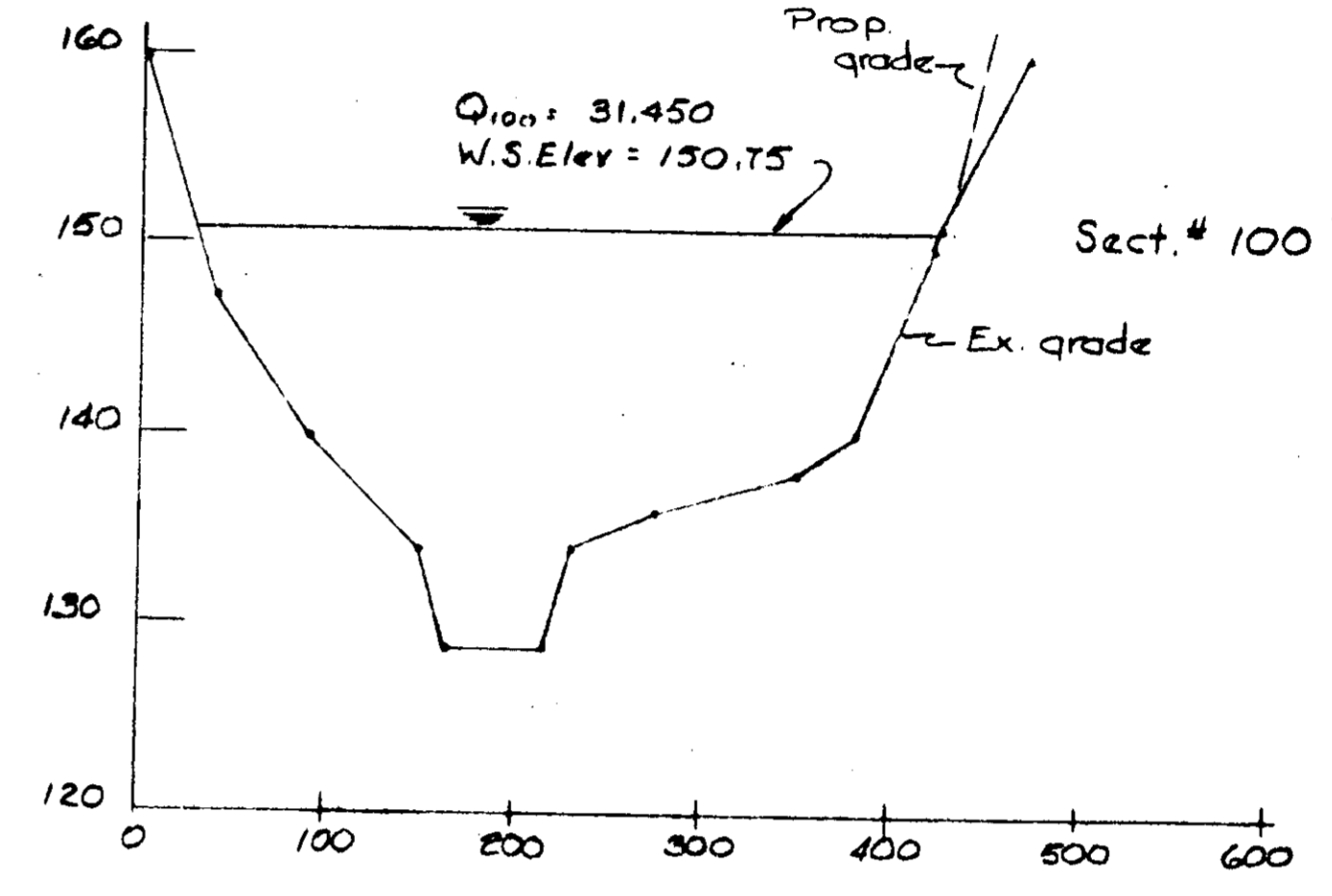
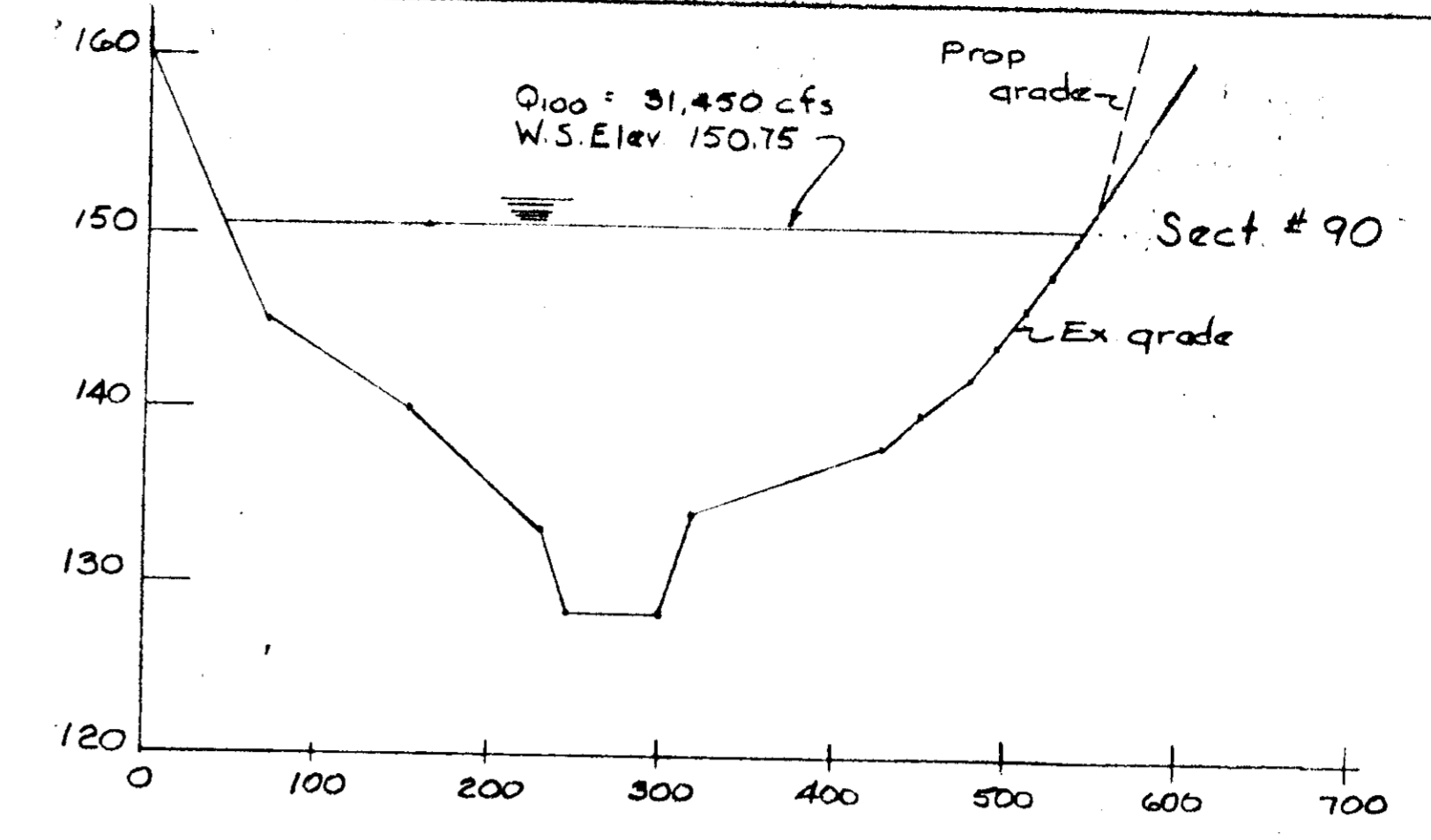
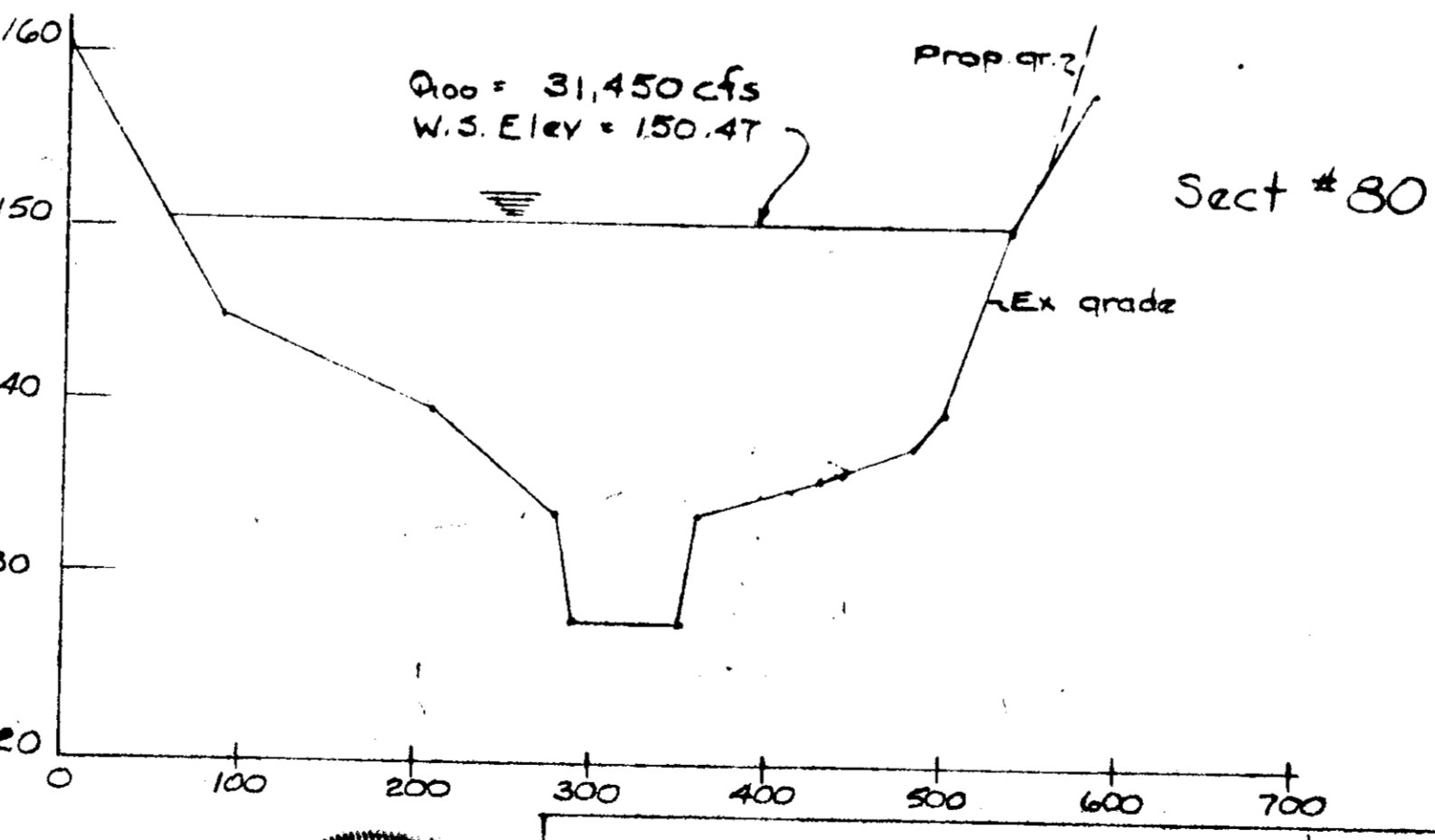
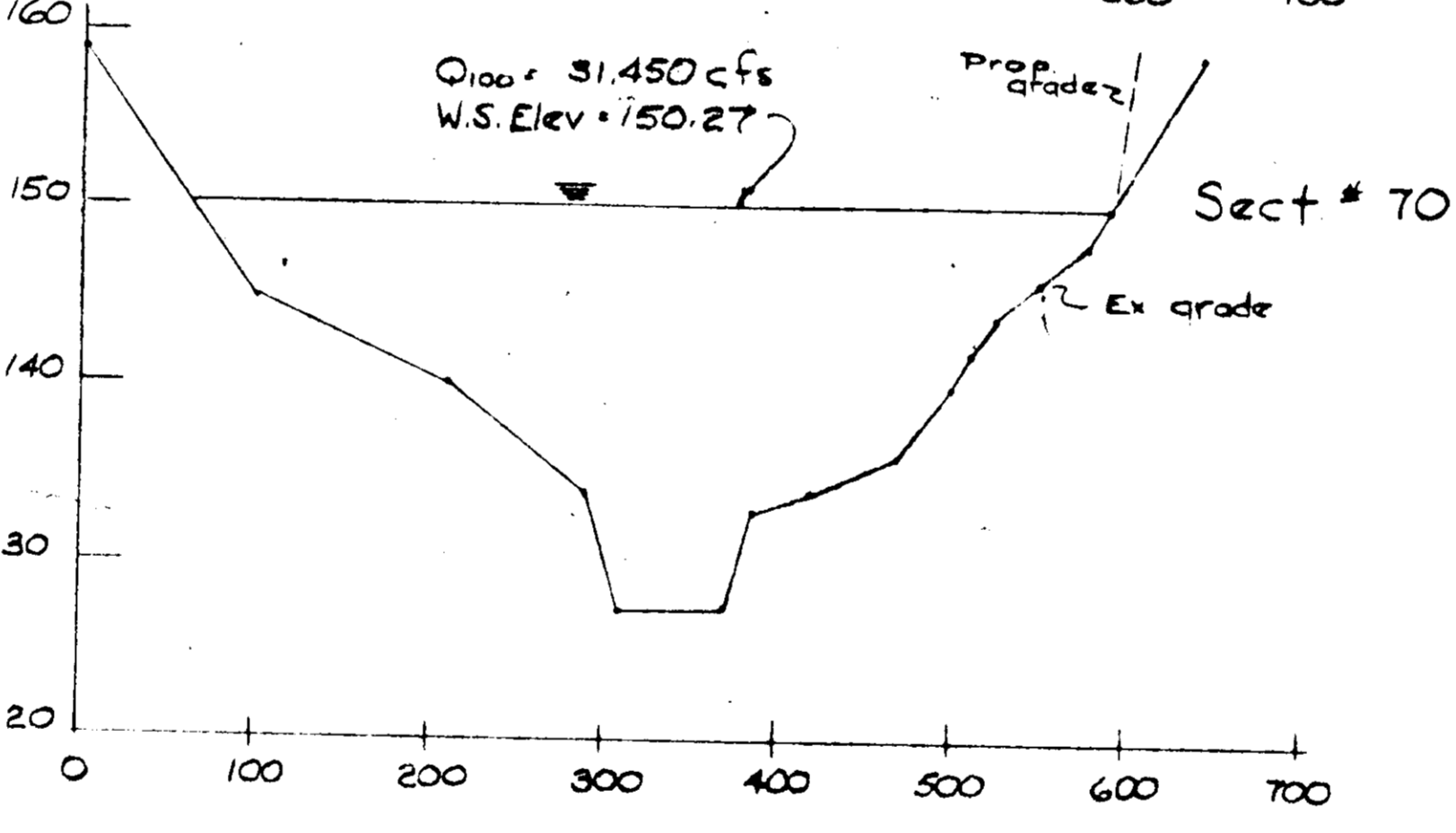
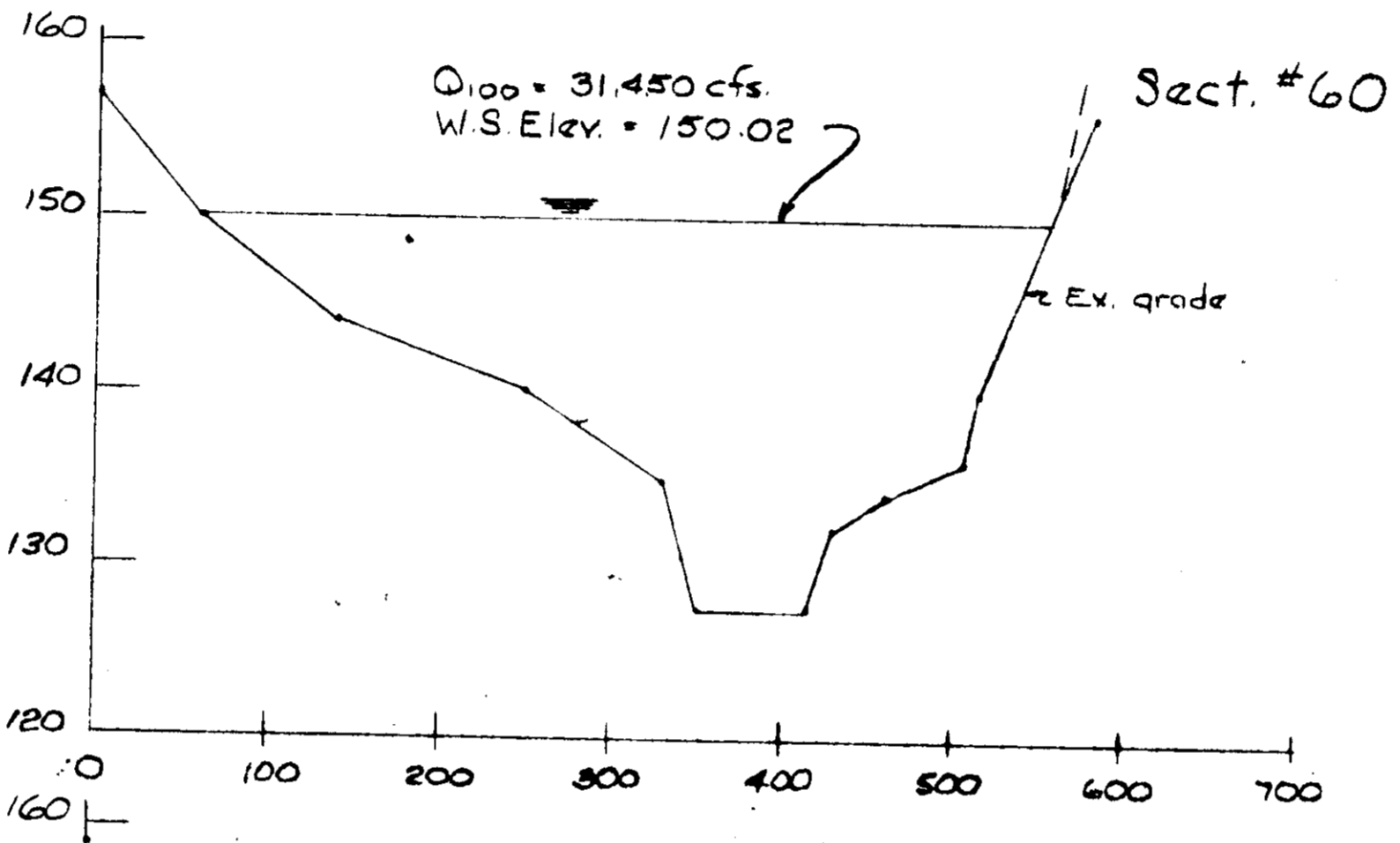
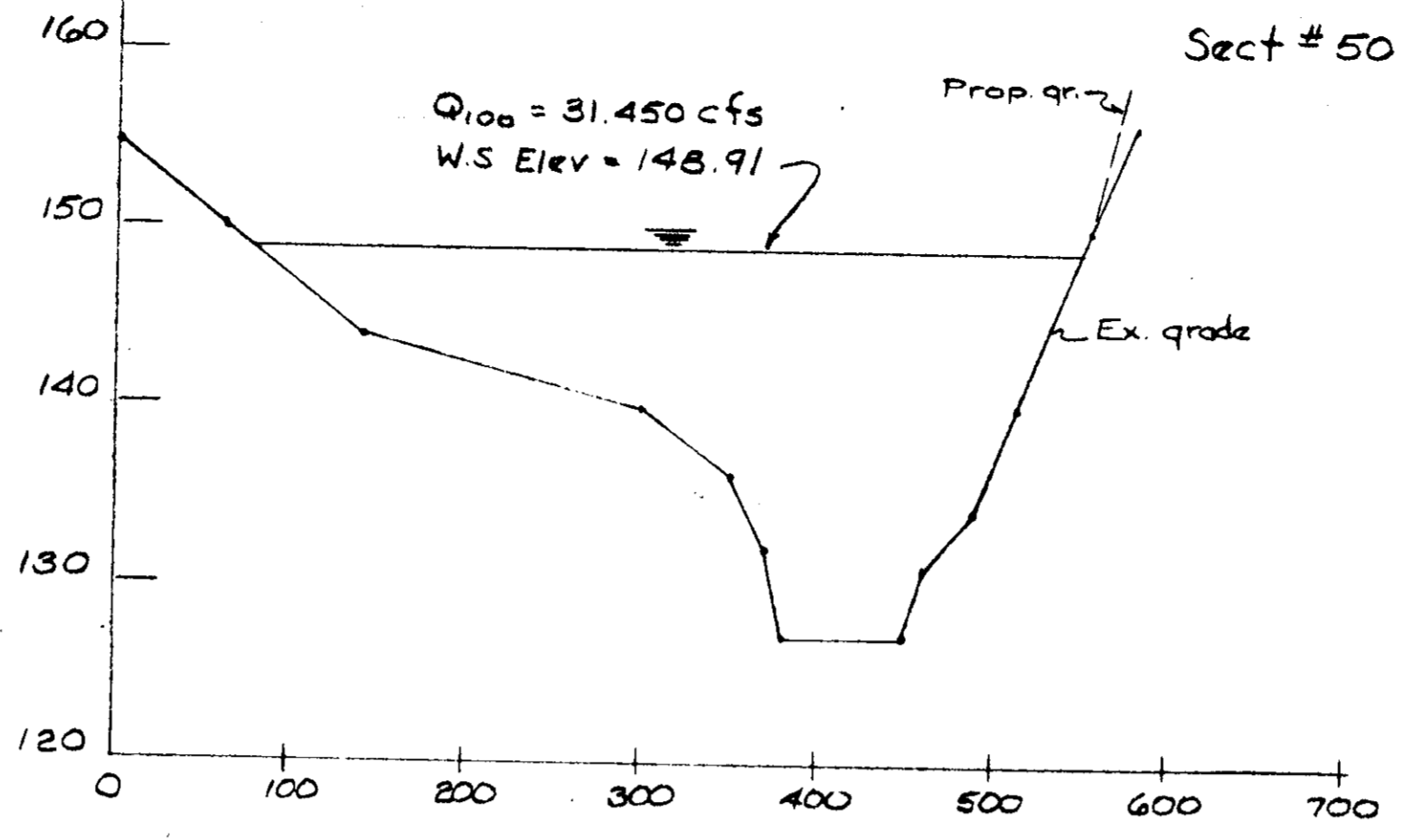
Flow  
Middle Putuxent River  
Rte #1 - South Bound Lane & Profile  
Section # 10



DETAIL FOR OLD BRIDGE @ RTE #1  
South Bound Lane  
Scale: 1" = 20' Hor. & Vert.



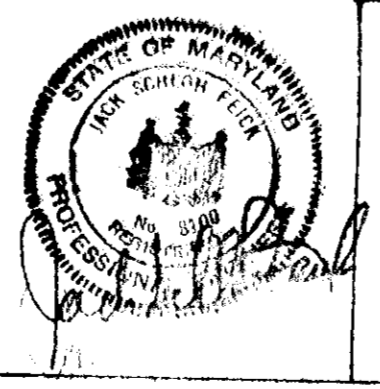
Note: For locations - See Dwg's 1 of 8 & 2 of 8



Putuxent River Crosssections  
Scale: Hor 1" = 100' Vert. 1" = 10'

APPROVED  
DIVISION OF LAND DEVELOPMENT  
HOWARD COUNTY, MARYLAND  
DATE 9-19-78

|   |   |                  |
|---|---|------------------|
| APPROVED: For public water & public sewerage systems<br>Howard County Health Department   | <i>James Bondus</i><br>County Health Officer        | 10-13-78<br>Date |
| APPROVED: Howard County Office of Planning & Zoning   | <i>Thomas L. Harnish</i><br>Planning Director       | 10-18-78<br>Date |
| APPROVED: Chief, Division of Land Development   | <i>Richard E. Brudenberg</i><br>Director            | 10-19-78<br>Date |
| APPROVED: For public water and public sewerage, storm drainage systems, and public roads<br>Howard County Department of Public Works. | <i>Richard E. Brudenberg</i><br>Director            | 10/6/78<br>Date  |
|   | <i>W. F. Albert</i><br>Chief, Bureau of Engineering | 10-6-78<br>Date  |



Developer  
BOUROUGH STORCH, et. al  
8930 Baltimore Street  
Savage, Maryland 20865  
301-725-6300

Engineering  
TYDINGS-OHEIM ASSOC., INC.  
JACK S. FEICK, ENGINEER  
18370 Court Avenue  
Ellicott City, Maryland  
301-465-0660

100 YEAR FLOOD PLAIN CROSSSECTIONS  
STORCH WOODS  
Section Two, Tax Map #47  
Sixth Election District  
Savage, Maryland

|                   |        |
|-------------------|--------|
| Scale<br>As Noted | Sheet  |
| Date<br>3-24-78   | 8 of 8 |
| Drawn<br>JSF      |        |