

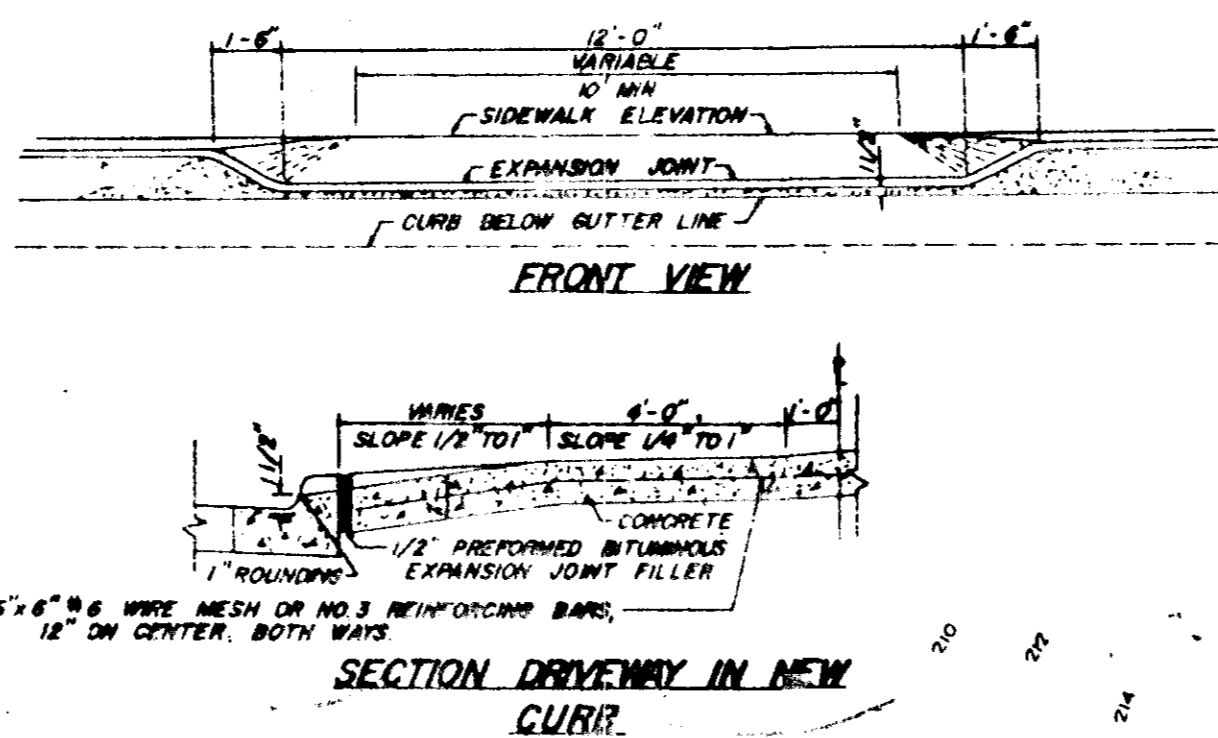
SEDIMENT CONTROL NOTES

SEDIMENT CONTROL NOTES (cont.)

- The developer shall notify the Howard Soil Conservation District and the Bureau of License, Inspection and Permits at least 24 hours prior to beginning any construction shown hereon (465-3180).
- Temporary Diversion Dikes to be constructed prior to any onsite grading or disturbance to any existing material, and are to be stabilized as soon as constructed.
- All sediment control structures to remain in place until permission for their removal has been obtained from the Howard Soil Conservation. (465-3180 or 465-5000 Ext. 291).
- All graded areas not to be sodded shall be stabilized by seeding and mulching in accordance with the following:

- Site Preparation:
 - Harrow or disc, in areas proposed to be seeded the following materials at the specified rate to a depth of 3"
 - Pulverized limestone at 1-1/2 tons/acre.
 - Commercial fertilizer 5-10-10 at 3/4 tons/acre.
 - Super phosphate at 600 lbs/acre.
- Seeding:
 - Sow the following seed mixture at the rate of 200 lbs/acre with a mechanical spreader.
 - 20% Annual Rye Grass
 - 80% Kentucky 31 Fescue
 - The seeded area shall then be raked with a York Rake (minimum of 2 passes), covered and compacted with Cultipacker or other approved method.

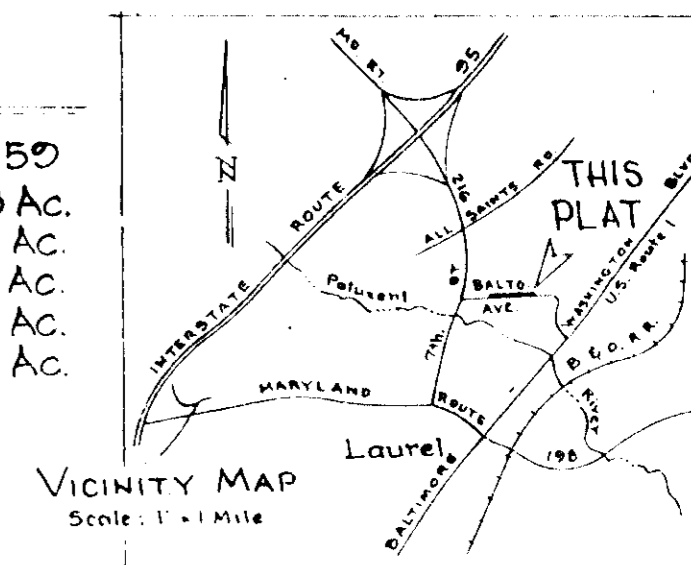
- Mulching:
 - Seeded areas shall be uniformly mulched immediately after seeding with unweathered small grain straw at the rate of 1-1/2 to 2 tons/acre.
 - The mulch down with liquid asphalt at 0.1 gal. s. y. or emulsified asphalt at 0.04 gal. s. y.
- The excess excavation material will be hauled off site, will be given to only those persons with an Approved Grading Plan.



SITE ANALYSIS - Plat No. 3665

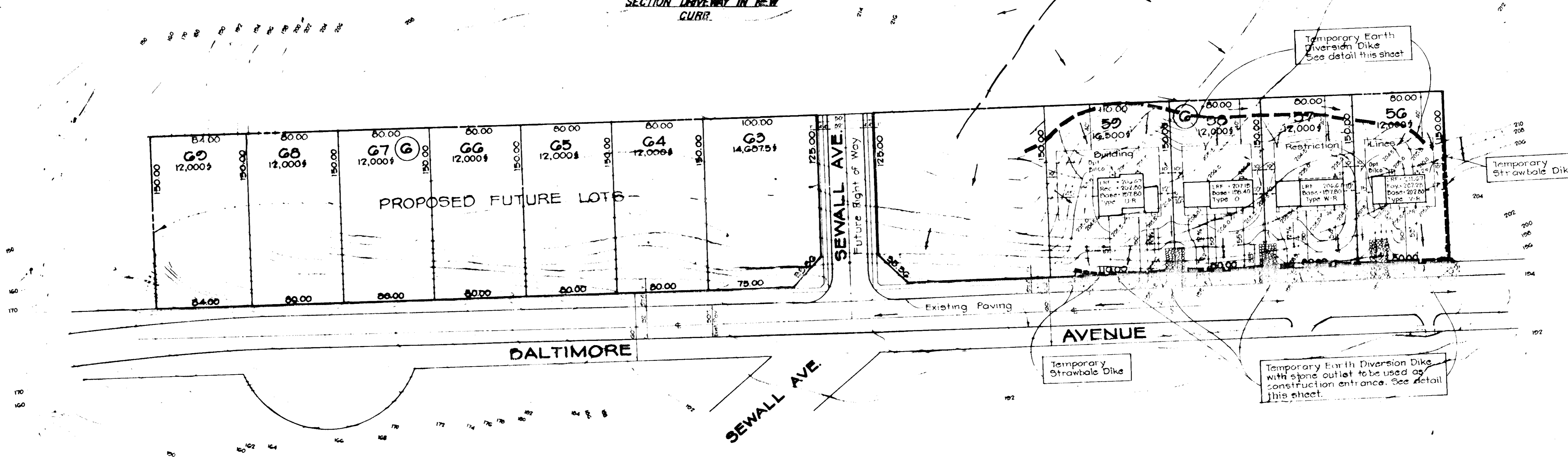
	LOT 56	LOT 57	LOT 58	LOT 59
1. Area	0.28 Ac.	0.28 Ac.	0.28 Ac.	0.38 Ac.
2. Disturbed Area	0.28 Ac.	0.25 Ac.	0.26 Ac.	0.38 Ac.
3. Undisturbed Area	0.05 Ac.	0.03 Ac.	0.02 Ac.	0.0 Ac.
4. Impervious Area	0.04 Ac.	0.05 Ac.	0.05 Ac.	0.05 Ac.
5. Area to be revegetated	0.19 Ac.	0.20 Ac.	0.21 Ac.	0.38 Ac.

Total Area of Lots = 1.205 Ac.
Zoning = R-12
Total No of Lots = 4



Sequence of Construction

Begin Sediment Control	Aug., 1977
Start Lot Grading	Aug., 1977
Begin House Construction	Aug., 1977
Construct Curb & Gutter	Oct., 1977
Final Stabilization	Nov., 1977



ENGINEER'S CERTIFICATE

I certify that this plan for erosion and sediment control represents a practical and workable plan based on my personal knowledge of the site conditions, and that it was prepared in accordance with the requirements of the Howard Soil Conservation District.

Paul R. Miller
Signature of Engineer

6-16-77
Date

Reviewed For Howard County Soil Conservation District
And Meets Technical Requirements.

C. Wayne Ray
U.S. SOIL CONSERVATION DIST. Date 8/2/77

This Development Plan is Approved For Soil Erosion And Sediment Control By The Howard Soil Conservation District.

Approved: *John D. Mlyns*
District Coordinator Date 8-2-77
Howard Soil Conservation Dist.

DEVELOPER'S CERTIFICATE

I certify that all development and/or construction will be done according to this plan of development and plan for erosion and sediment control. And I also authorize periodic on-site inspection by The Howard Soil Conservation District or their authorized agents, as are deemed necessary. Deviation from this plan will not be made unless authorized by the Howard Soil Conservation District.

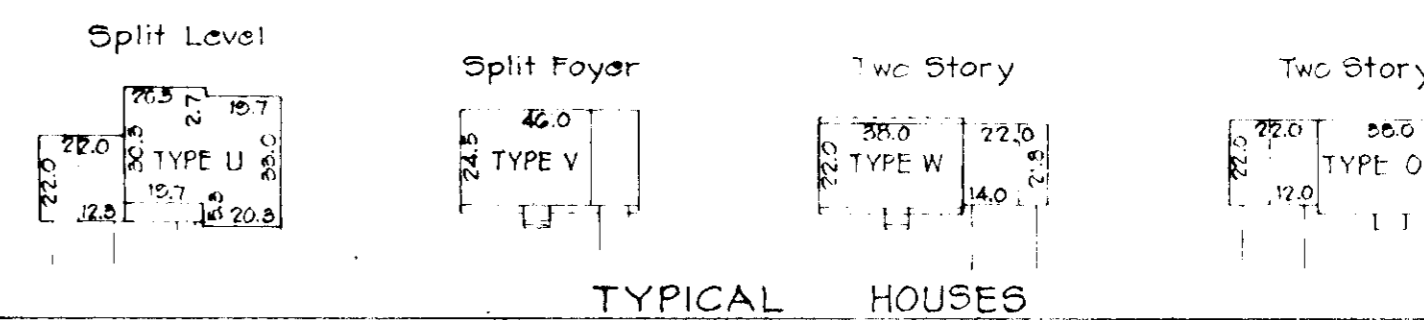
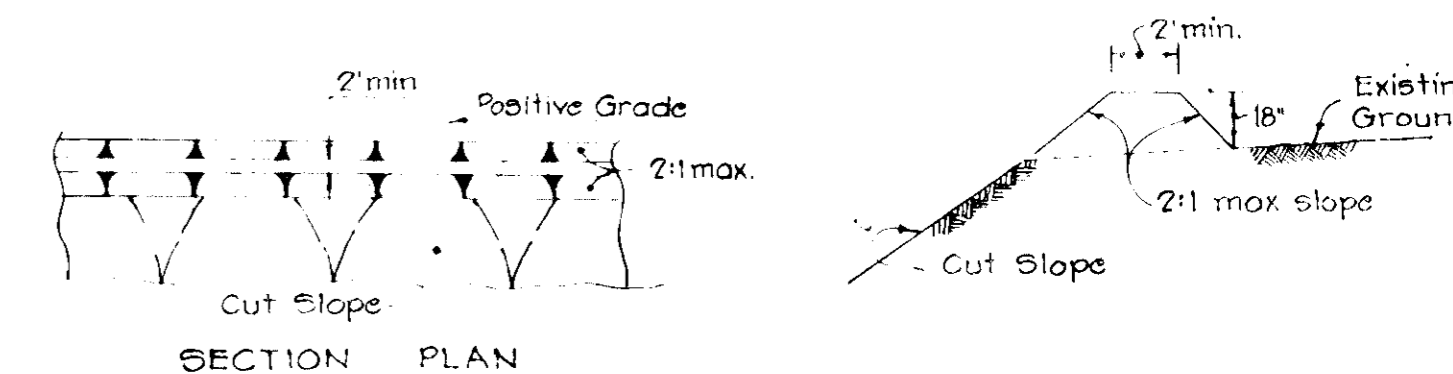
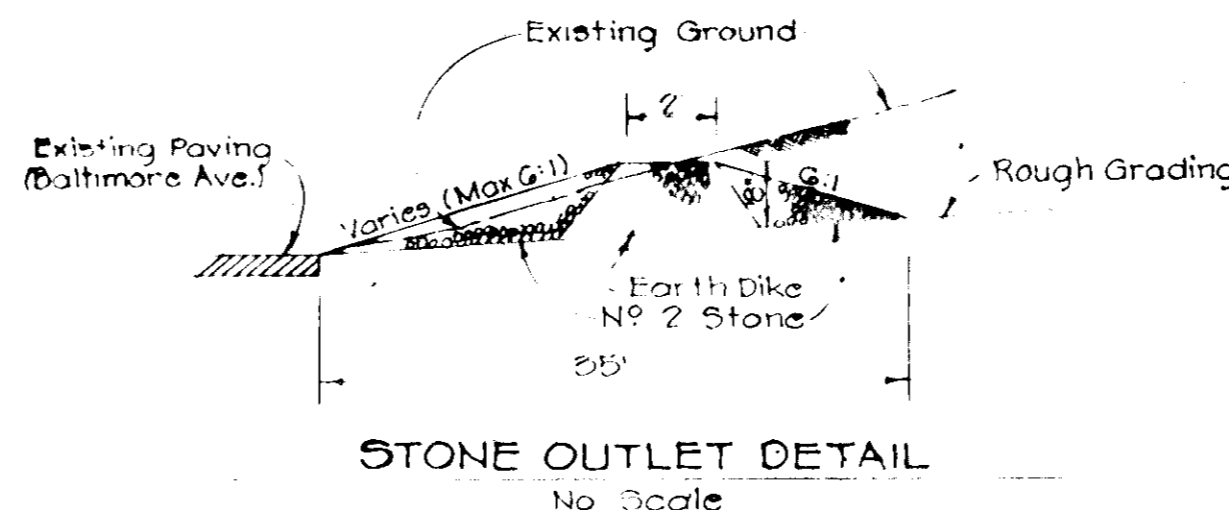
Earl W. Clive
Earl W. Clive

6-17-77
Date 6-17-77

APPROVED FOR PUBLIC WATER AND PUBLIC SEWERAGE SYSTEMS, HOWARD CO. HEALTH DEPT.
James M. Boyd
COUNTY HEALTH OFFICER Date 8-11-77

APPROVED HOWARD CO., OFFICE OF PLANNING & ZONING
John D. Mlyns
Planning Director Date 8-11-77
Chief, Division of Land Development

APPROVED FOR PUBLIC WATER, PUBLIC SEWERAGE AND STORM DRAINAGE SYSTEMS, HOWARD COUNTY DEPT. OF PUBLIC WORKS
James M. Boyd
Director Date 8-11-77
Charles W. McKeand
Chief, Bureau of Highways Date 8-11-77



PLAT # 3665 LOTS 56, 57, 58 & 59 BLOCK G
Election District No 6 Tax Map No 50
NORTH LAUREL
Howard County, Maryland

7-20-77
DATE June, 1977
SCALE 1" = 50'
JOB NO. 2073 C-2
SHEET NO. 1 of 1

DATE	REVISION	DRAFTING	CHECK	DESIGN	CHECK

Developer & Owner:
WARD DEVELOPMENT CO., INC.
1 Bank Street
Gaithersburg, Maryland 20760

CIVIL ENGINEERS LAND PLANNERS LAND SURVEYORS
OYSTER, IMUS AND PETZOLD, INC.
415 REEDS DRIVE WASHINGTON, MARYLAND 20001

Site Development Plan

SDP-77-110