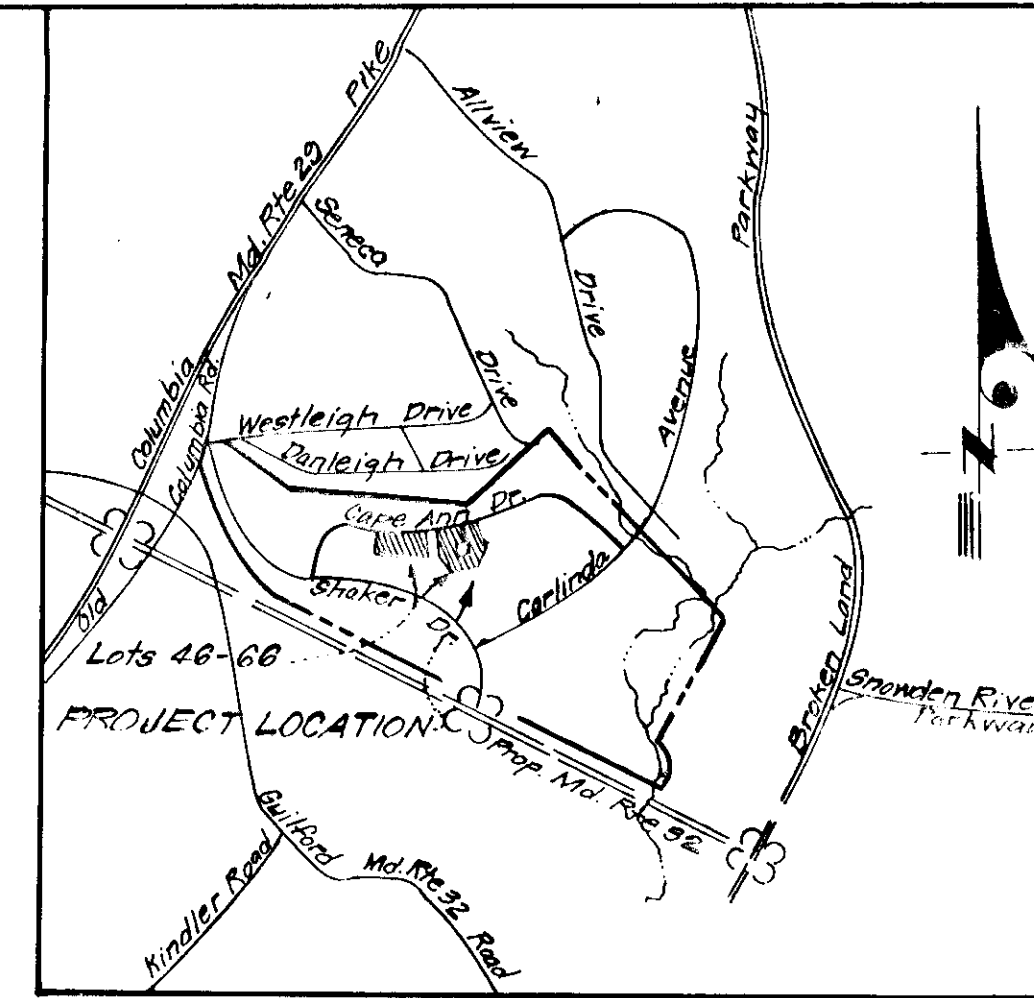
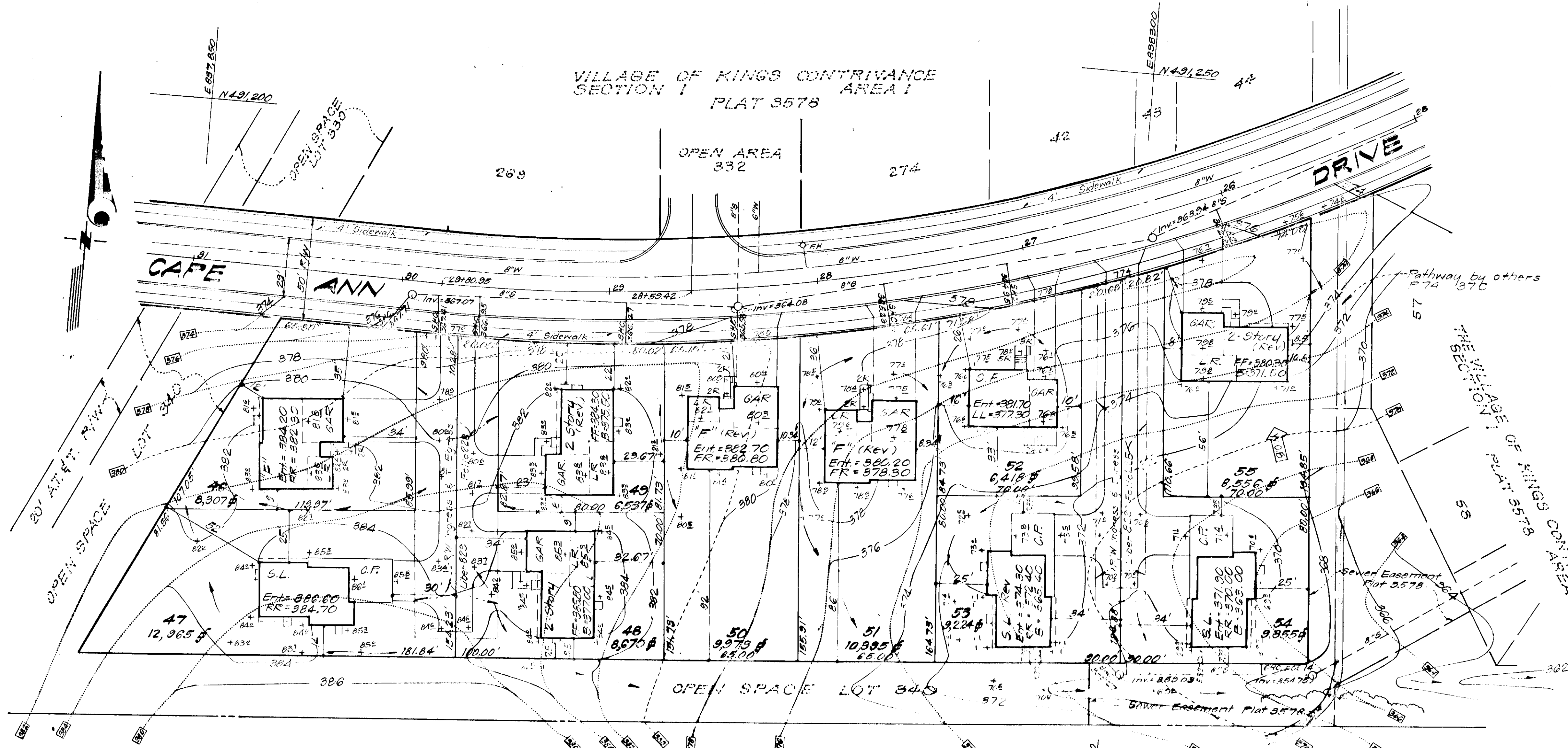


VILLAGE OF KINGS CONTRIVANCE  
SECTION 1  
PLAY 3578



VICINITY MAP  
SCALE: 1"=1000'

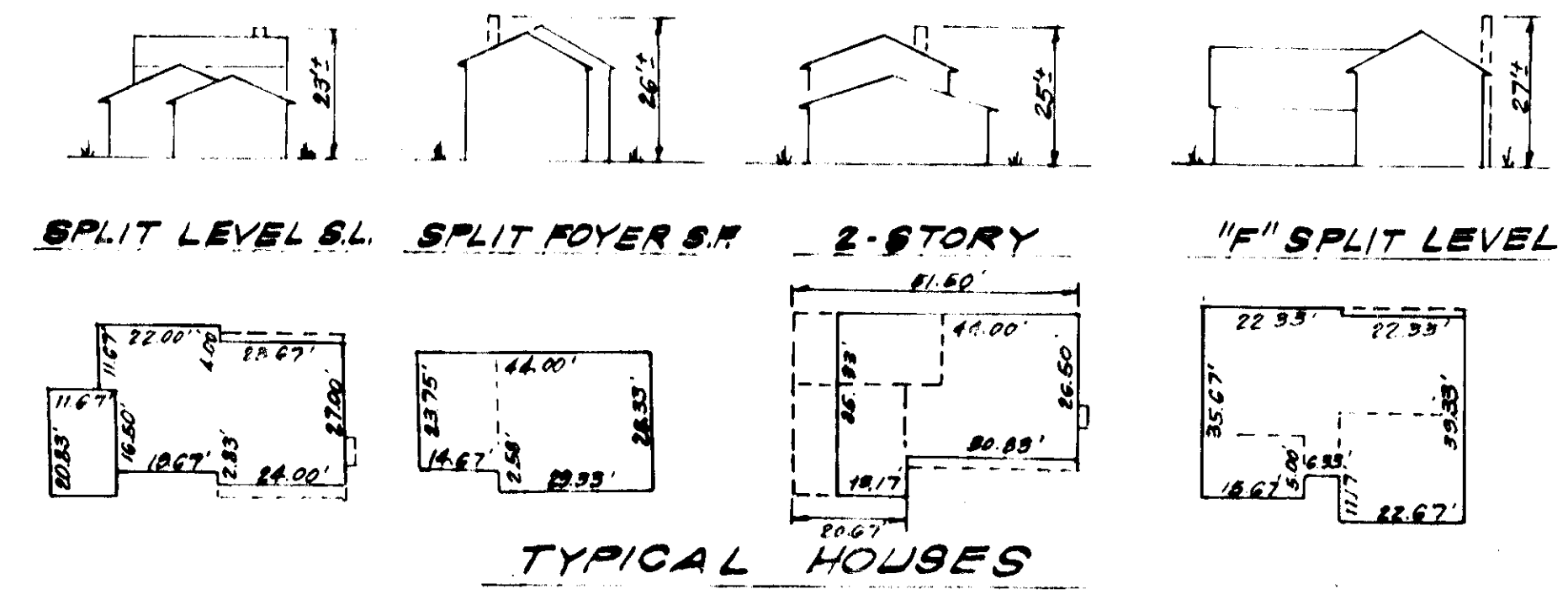
LEGEND

- 1. Contour Interval 2 FT.
- 2. Existing Contour
- 3. Proposed Contour
- 4. Spot Elevation +705
- 5. Direction of Direction
- 6. Yard Requirements: Front: 20 Ft on 50' Wide Street  
30 Ft on 60' Wide Street  
Back: 7.5 Ft (Min.)
- 7. Existing Trees to be Retained
- 8. Walk-Out Basement

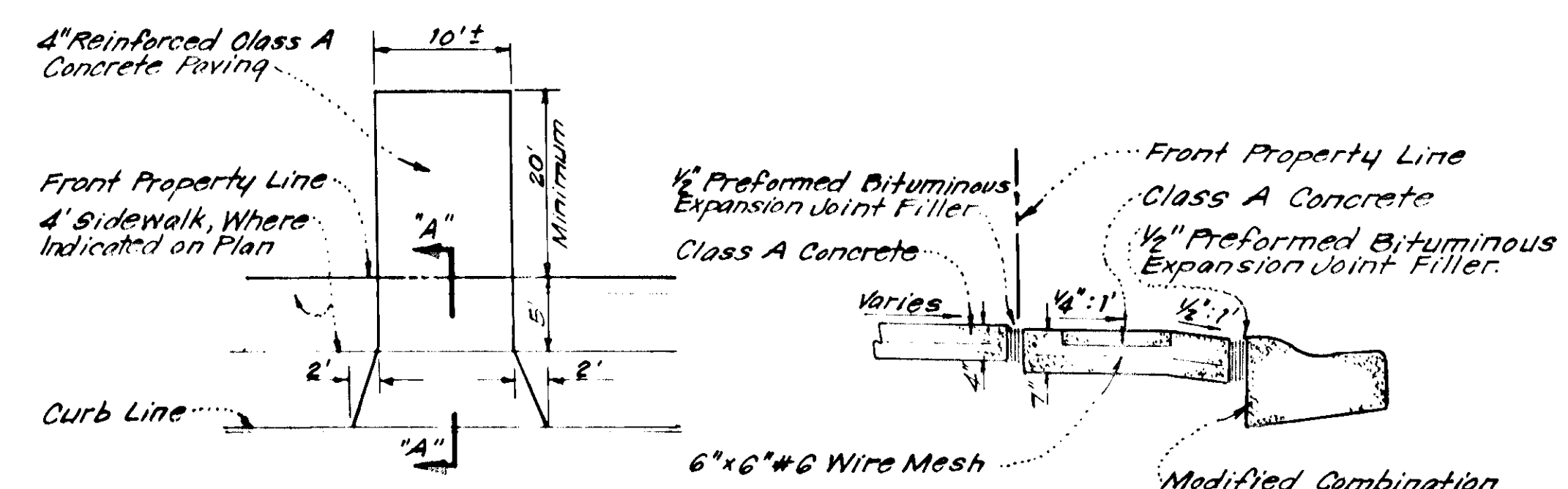
THE HOWARD RESEARCH & DEVELOPMENT CORP.  
480 / 44

GENERAL NOTES

1. The Land Included in this Plan is Zoned Newtown (S.F.M.D.)
2. The lots shown on this Plan are covered by Final Development Plan Phase 148 recorded in Plat Book 28, Folios 70 to 79.
3. All Coordinates are based on Maryland State Grid System. Elevations are based on U.S. Coast and Geodetic Survey Mean Sea Level of 1929.
4. The Area covered in this submission is located on Tax Map No. 42.
5. The total Area Included in this Plan is 4.213 Acres.
6. All Roadways are Public and Existing.
7. Any damage to County Owned Right of Ways or Paving shall be corrected at the Developers expense.



TYPICAL HOUSES



NOTE: Use Residential Driveway Entrance Howard Co. Std. Dwg. D-34, pg. 83 except Where Driveway Abuts Modified Comb. Curb & Gutter.  
NOTE: Materials and Construction shall be in accordance with Howard Co. Road Constr. Code.

DRIVEWAY ABUTTING MODIFIED COMB. CURB & GUTTER  
No Scale

APPROVED  
6-22-77

NOTE: For Bearings and Distances of Individual Lot Lines See Record Plat recorded as Plat 3578.

7-27-77

Clark Finfrock & Sackett

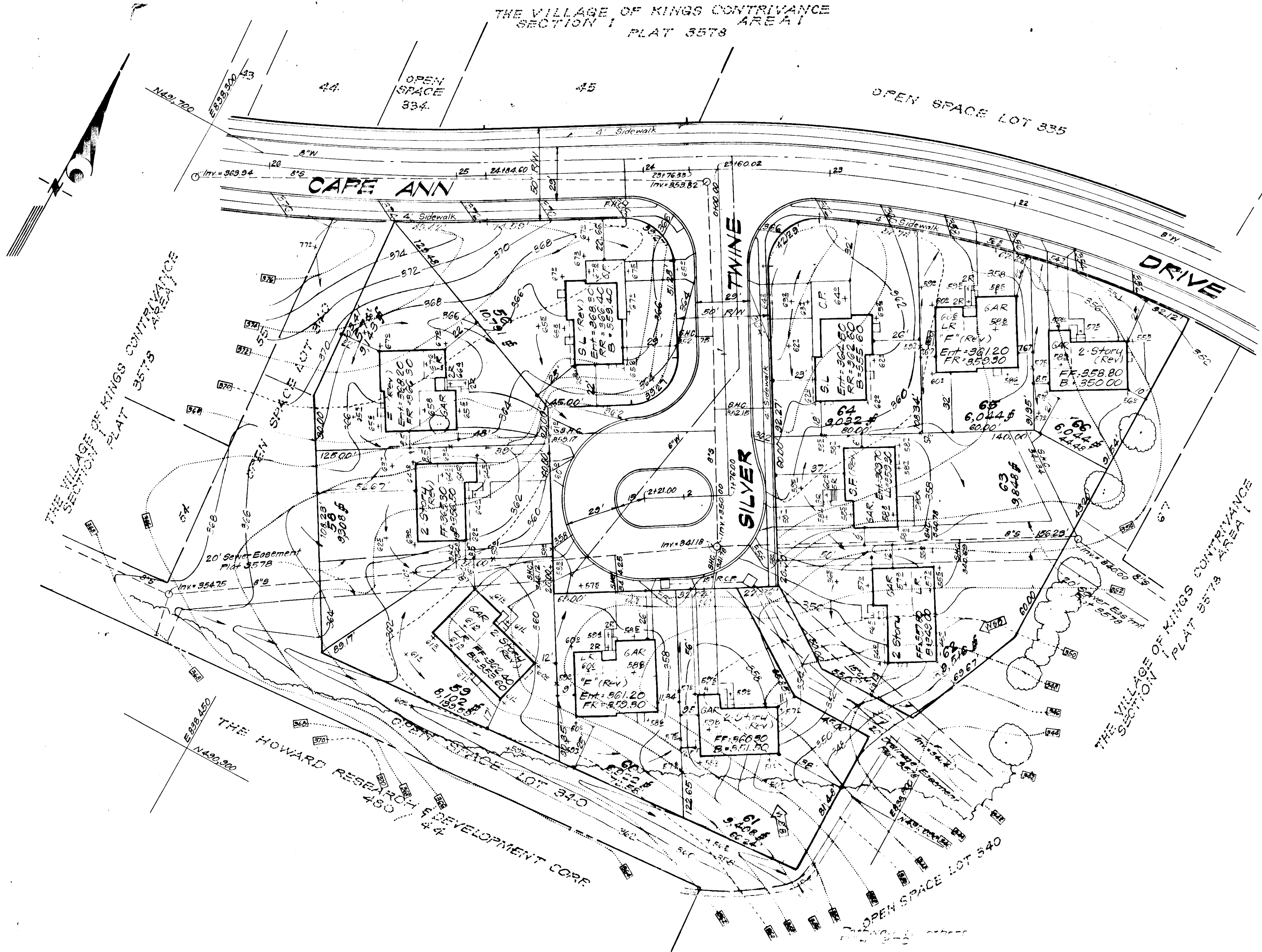
CLARK • FINFROCK & SACKETT  
ENGINEERS • PLANNERS • SURVEYORS  
1101 LOCKWOOD DRIVE SILVER SPRING, MARYLAND 20910

DESIGNED BY: W.K.M.S.  
DRAWN BY: K.I.W.  
CHECKED BY: D.E.S.  
DATE: 7-27-77

SITE DEVELOPMENT PLAN  
LOTS 46 THRU 55  
VILLAGE OF KINGS CONTRIVANCE  
SECTION 1  
ELECTION DISTRICT  
HOWARD COUNTY, MARYLAND

SDP-77-90


THE VILLAGE OF KINGS CONTRIVANCE  
SECTION I PLAT 3578 AREA I



APPROVED  
BY THE BOARD  
OF ZONING  
FALL 6-22-77

FOR PUBLIC WATER AND PUBLIC SEWERAGE  
COUNTY OF HOWARD  
Joseph Byrnes 7-27-77

*David B. Sackett*

 <b>CLARK • FINEFROCK &amp; SACKETT</b> ENGINEERS • PLANNERS • SURVEYORS <small>1515 LOCKWOOD DRIVE SILVER SPRING, MARYLAND 20901 (301) 593-9100</small>	
DESIGNED <i>R.B.S.</i>	<b>SITE DEVELOPMENT PLAN</b> <b>LOTS 56 THRU 66</b> <b>COLUMBIA</b> VILLAGE OF KINGS CONTRIVANCE SECTION I 6th ELECTION DISTRICT HOWARD COUNTY, MARYLAND FOR: COLUMBIA BUILDERS, INC. 606 American City Blvd. Columbia, Maryland 21048 <b>SDP-77-90c</b>
DRAWN <i>K.L.W.</i>	
CHECKED <i>D.B.S.</i>	
DATE Apr. 1977	