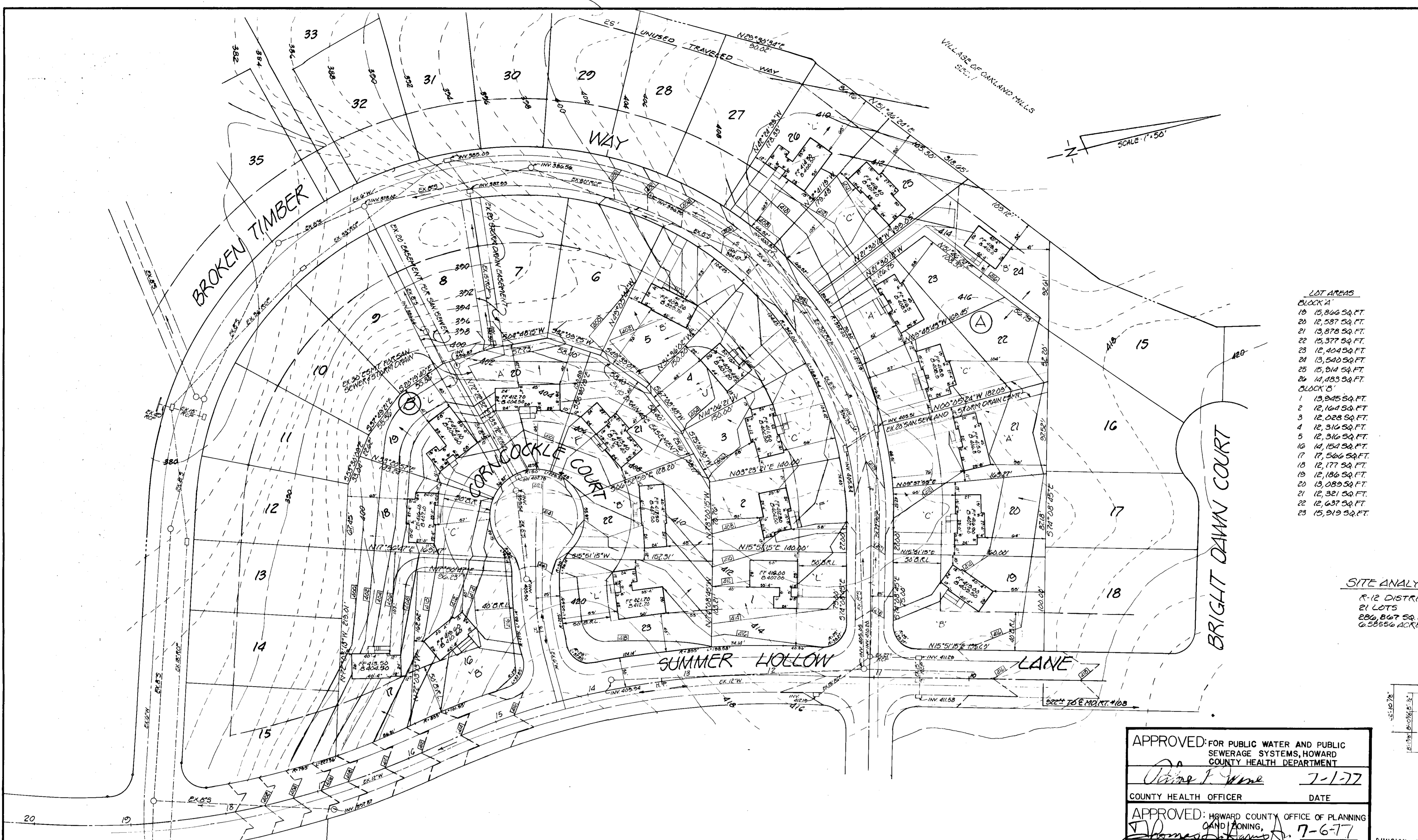
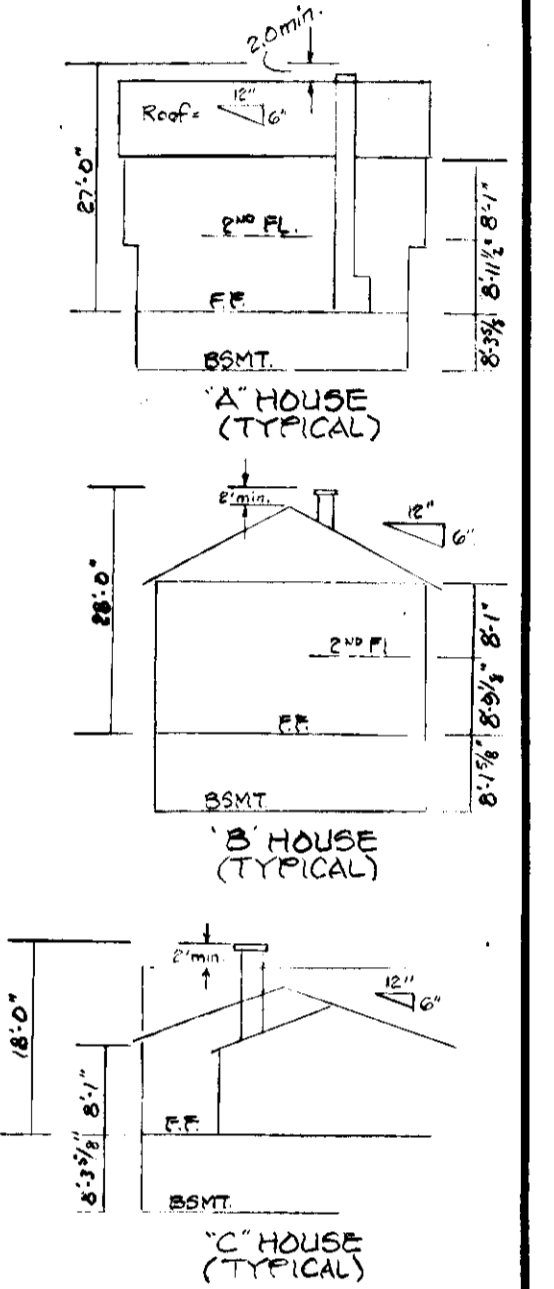


VICINITY MAP
1"=2000'

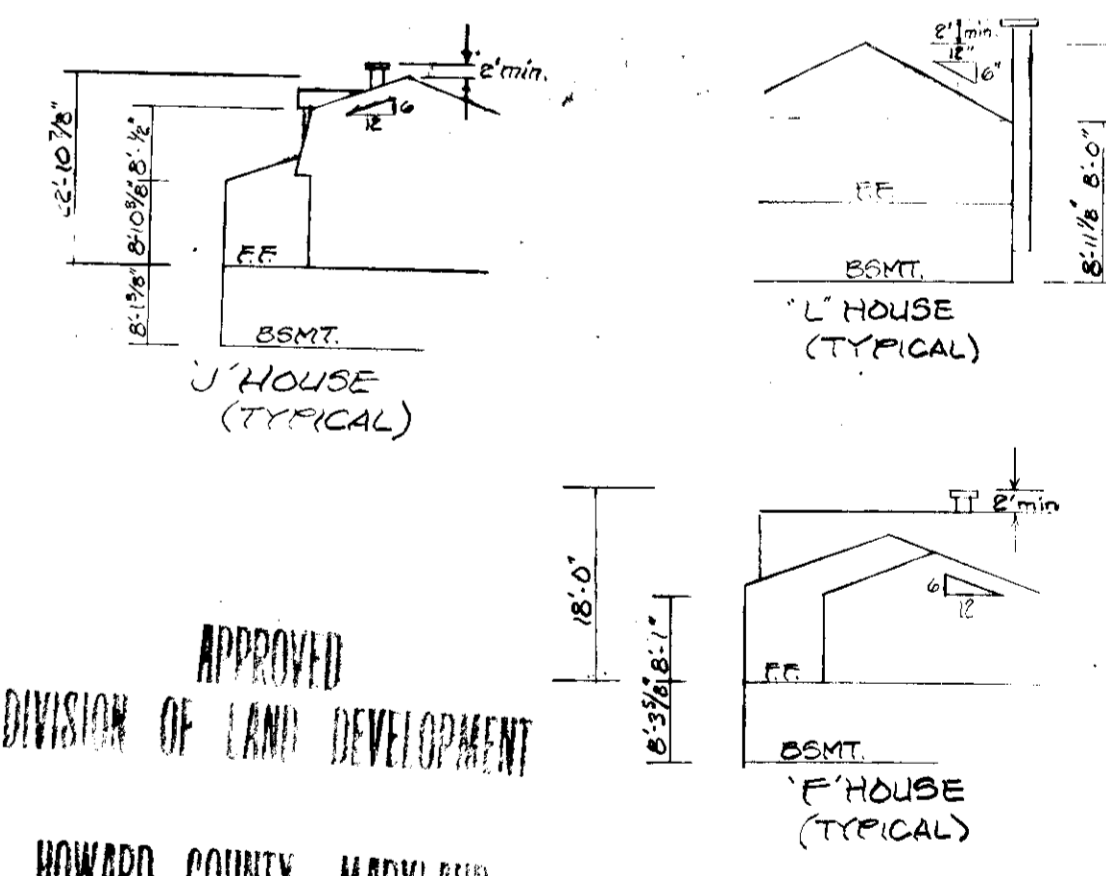


LOT AREAS

BLOCK A	
19	15,866 SQ. FT.
20	12,587 SQ. FT.
21	13,878 SQ. FT.
22	15,377 SQ. FT.
23	12,404 SQ. FT.
24	13,540 SQ. FT.
25	15,914 SQ. FT.
26	11,083 SQ. FT.
BLOCK B	
1	13,045 SQ. FT.
2	12,164 SQ. FT.
3	12,028 SQ. FT.
4	12,316 SQ. FT.
5	12,316 SQ. FT.
6	14,151 SQ. FT.
7	17,566 SQ. FT.
8	12,177 SQ. FT.
9	12,186 SQ. FT.
10	13,089 SQ. FT.
11	12,321 SQ. FT.
12	12,637 SQ. FT.
13	15,919 SQ. FT.



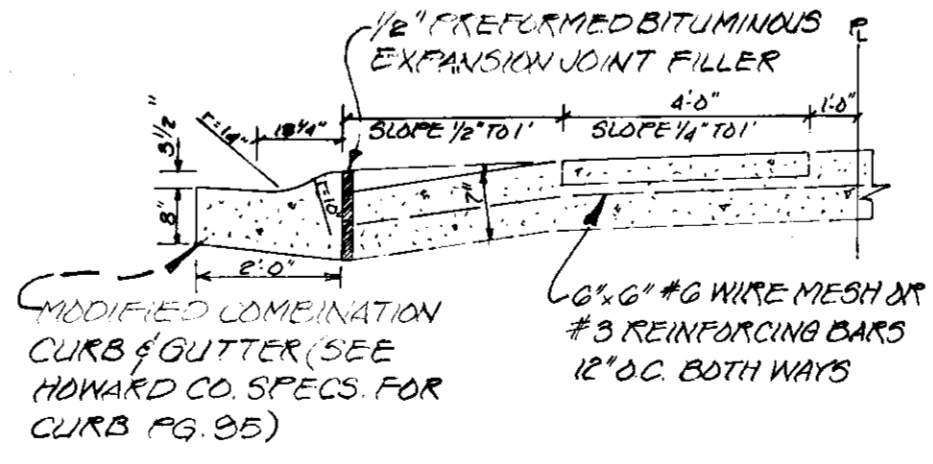
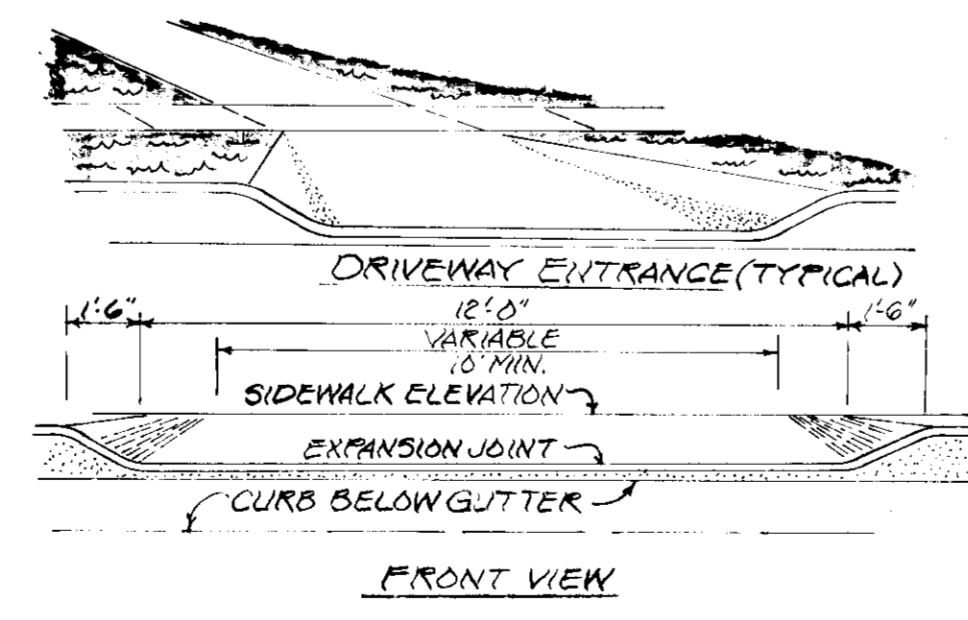
SITE ANALYSIS
R-12 DISTRICT
21 LOTS
280,867 SQ. FT. =
6.5856 ACRES



NOTE: VEHICULAR INGRESS AND EGRESS IS RESTRICTED ALONG SUMMER HOLLOW LANE.

NOTE: BROKEN TIMBER WAY, CORNCOCKLE COURT AND SUMMER HOLLOW ARE COUNTY MAINTAINED. ANY DAMAGE TO R/W'S OR PAVING MUST BE CORRECTED AT DEVELOPER'S EXPENSE.

NOTE: GIVE 24 HOUR NOTICE TO INSPECTIONS & PERMITS BEFORE STARTING ANY EXCAVATION OR CONSTRUCTION. (301-465-5000) x 365



APPROVED: FOR PUBLIC WATER AND PUBLIC SEWERAGE SYSTEMS, HOWARD COUNTY HEALTH DEPARTMENT	
<i>John T. Wynn</i>	7-1-77
COUNTY HEALTH OFFICER	DATE
APPROVED: HOWARD COUNTY OFFICE OF PLANNING AND ZONING	
<i>James H. ...</i>	7-6-77
PLANNING DIRECTOR	DATE
APPROVED: FOR PUBLIC WATER, PUBLIC SEWERAGE AND STORM DRAINAGE SYSTEMS AND ROADS	
HOWARD COUNTY DEPARTMENT OF PUBLIC WORKS	
<i>...</i>	6-25-77
DIRECTOR	DATE
<i>...</i>	DATE
CHIEF, BUREAU OF HIGHWAYS	DATE

APPROVED
DIVISION OF LAND DEVELOPMENT
HOWARD COUNTY, MARYLAND
DATE 6-8-77

OWNER AND DEVELOPER
DAVID R. MATTHIAS INC.
#22 DEVON LANE
WALKERSVILLE, MD
21785 PH-301-845-6100



SHEET 1 OF 3

SITE PLAN
PLAT THO, SECTION 1, AREA 1, BLOCK A, LOTS 19-26 AND BLOCK B, LOTS 1-5 AND 16-23
RESUBDIVISION OF WINFIELD SEC. A - PLAT 300K4 FOLIO 65
GLENMONT
ELECTION DIST. #6 HOWARD COUNTY, MARYLAND

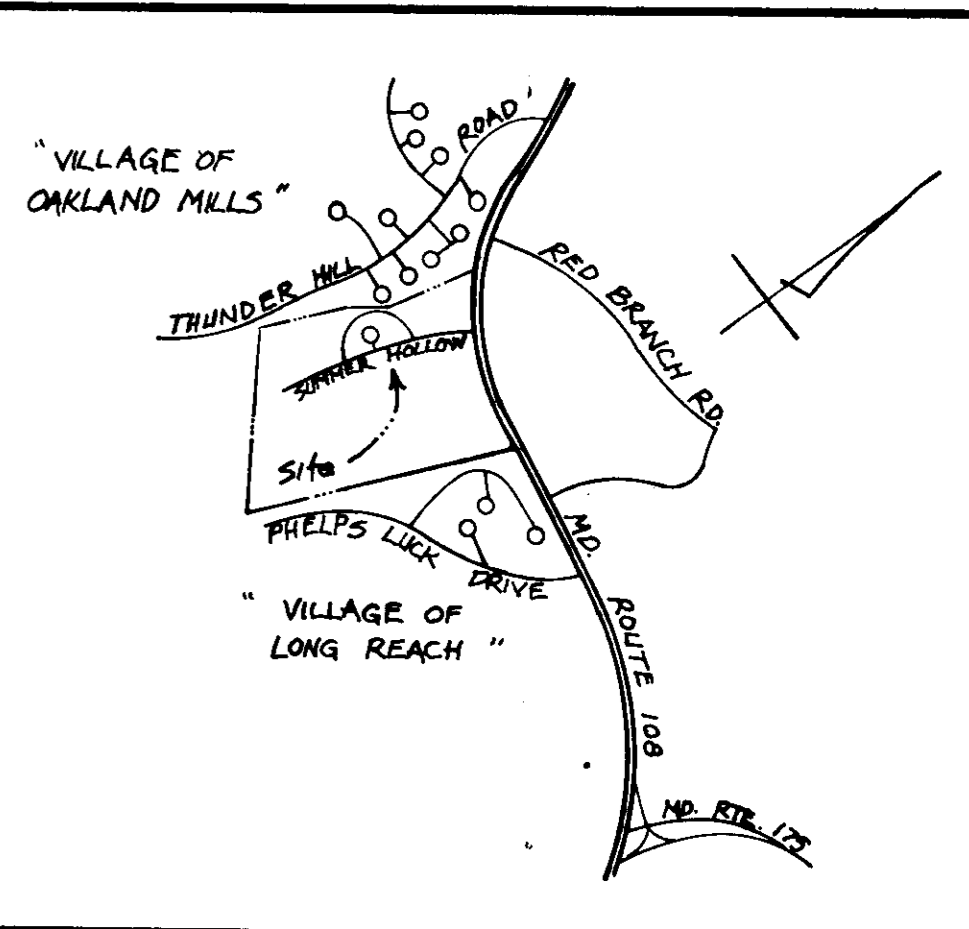
DESIGNED BY	SCALE 1"=50'	DATE APRIL 1977	PHONE: 422-6080
DRAWN BY	Light, Elliott, & Associates ENGINEERS PLANNERS SURVEYORS 8508 ADELPHI ROAD • ADELPHI MARYLAND 20783		
APPROVED BY	PLAT # 3573	JOB NO. 4008	FILE NO. 230280

REVIEWED FOR HOWARD SCD AND MEETS TECHNICAL REQUIREMENTS

Clinton G. Light
 SIGNATURE DATE
 U.S. SOIL CONSERVATION SERVICE

THIS DEVELOPMENT PLAN IS APPROVED FOR SOIL EROSION AND SEDIMENT CONTROL BY THE HOWARD SOIL CONSERVATION DISTRICT.

John Myers 6-16-77
 APPROVED DATE
 HOWARD S.C.D.



VICINITY MAP
 1" = 2000'

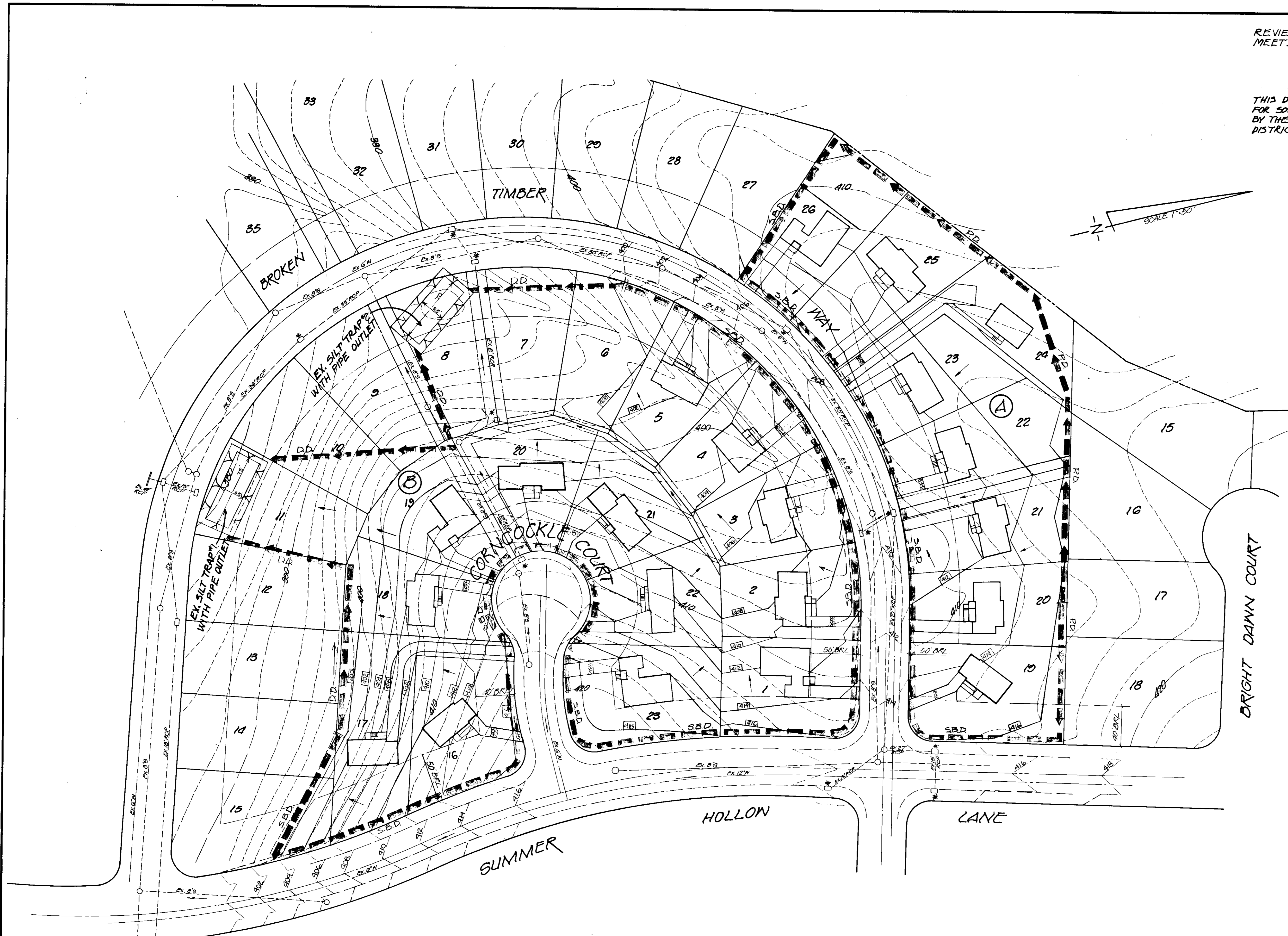
NOTE:
 FOR GENERAL NOTES AND DETAILS SEE SHEET 3 OF 3

APPROVED FOR PUBLIC WATER AND PUBLIC SEWERAGE SYSTEMS, HOWARD COUNTY HEALTH DEPARTMENT	<i>Robert F. Stone</i>	7-1-77
COUNTY HEALTH OFFICER		DATE
APPROVED HOWARD COUNTY OFFICE OF PLANNING AND ZONING	<i>Thomas F. ...</i>	7-6-77
PLANNING DIRECTOR		DATE
CHIEF, DIVISION OF LAND DEVELOPMENT		DATE
APPROVED FOR PUBLIC WATER, PUBLIC SEWERAGE AND STORM DRAINAGE SYSTEMS AND ROADS		
HOWARD COUNTY DEPARTMENT OF PUBLIC WORKS		
DIRECTOR	<i>W. W. ...</i>	6-15-77
CHIEF BUREAU OF HIGHWAYS		DATE

APPROVED
 DIVISION OF LAND DEVELOPMENT
 HOWARD COUNTY, MARYLAND
 DATE 6-8-77
MM

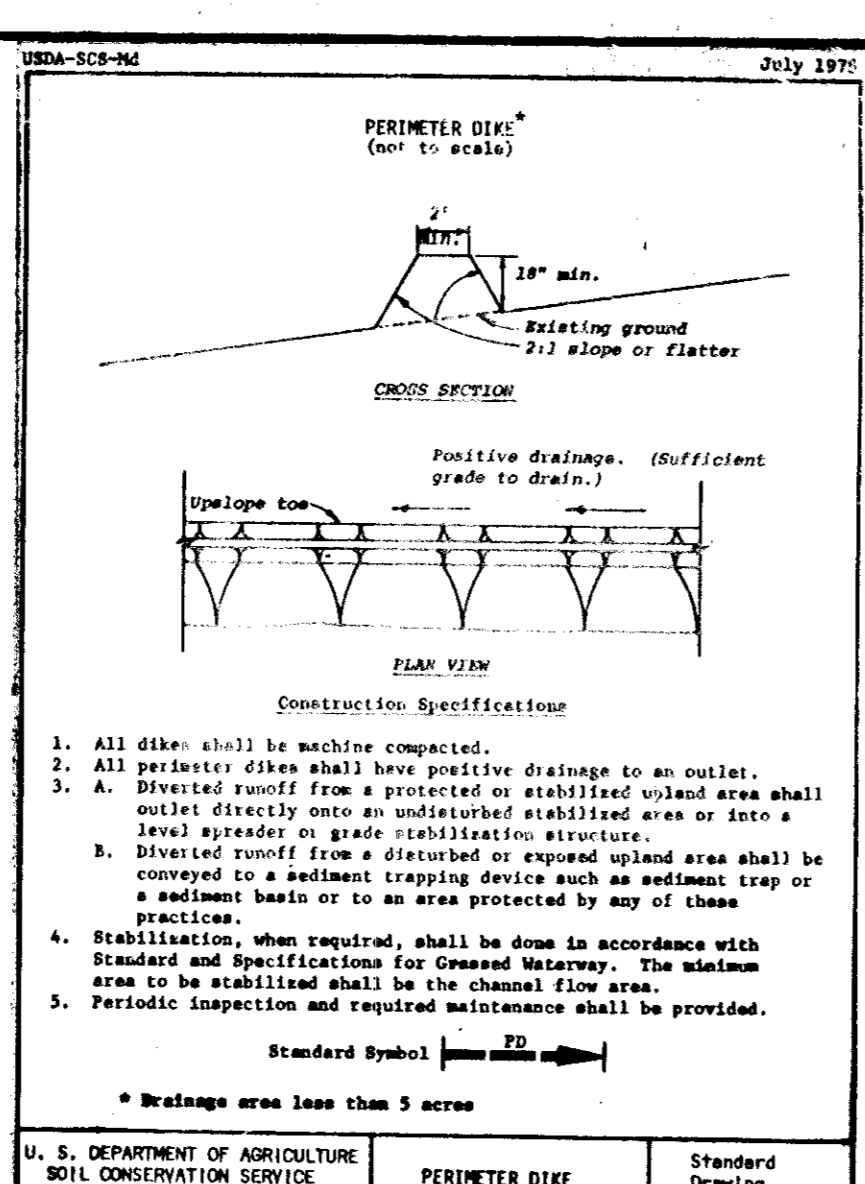
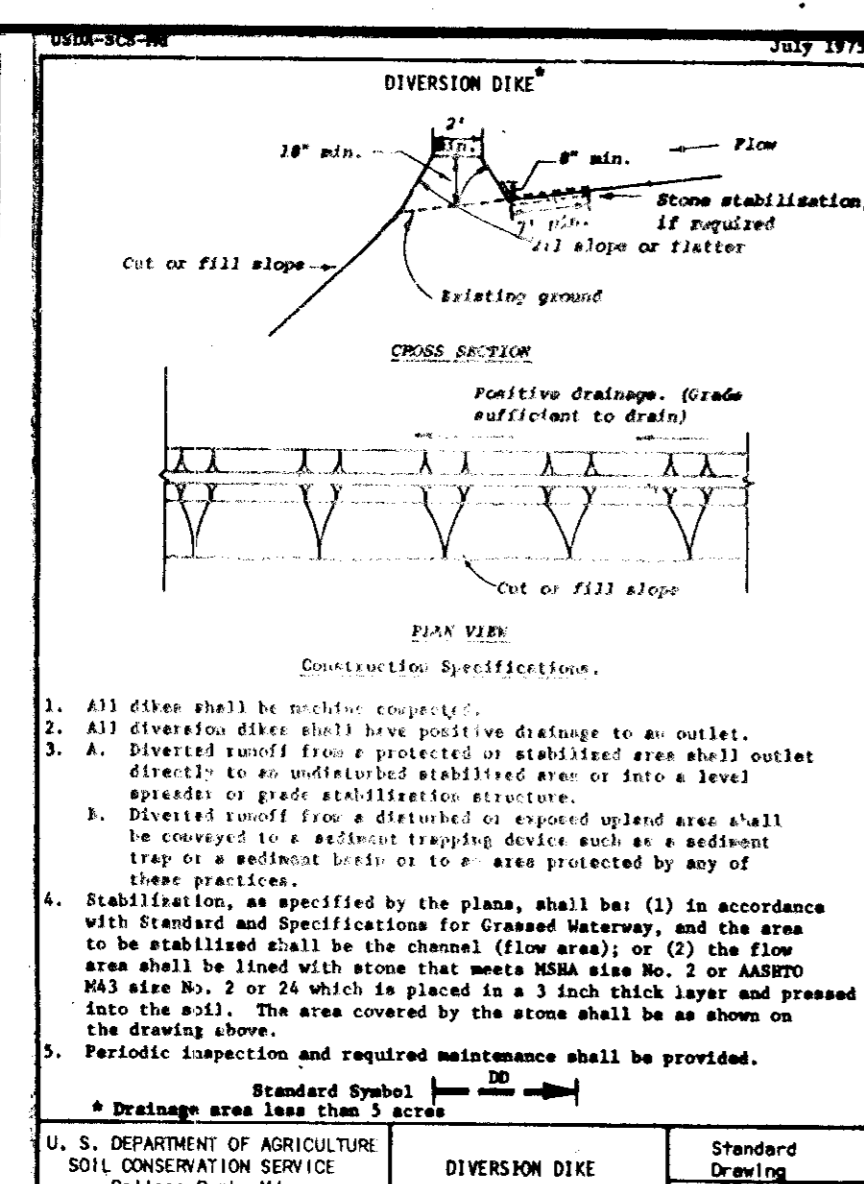
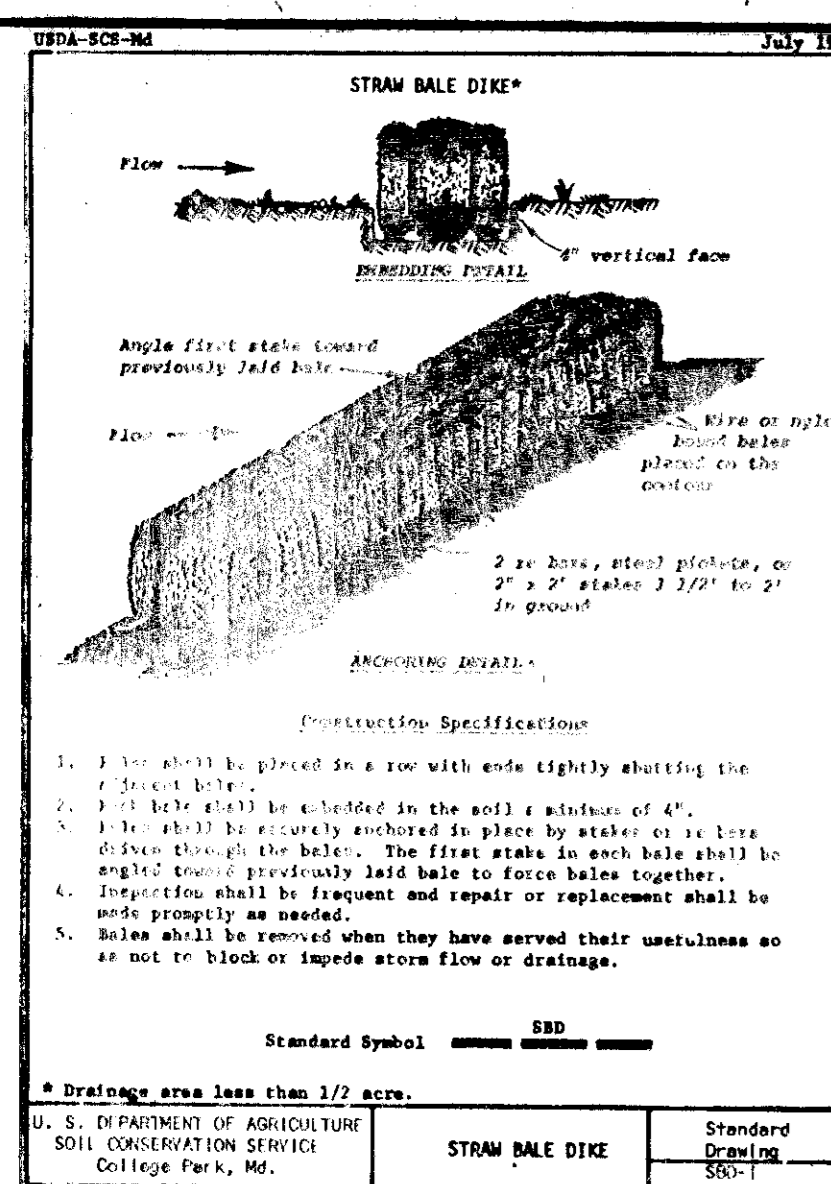
SHEET 2 OF 3

SEDIMENT CONTROL PLAN			
PLAT TWO, SECTION 1, AREA 1, BLOCK A, LOTS 19-26 AND BLOCK 'B', LOTS 1-5 AND 16-23			
RESUBDIVISION OF "WINFIELD SEC. A" PLAT BOOK A FOLIO 65			
GLENMONT			
ELECTION DIST. #6 HOWARD COUNTY, MARYLAND			
DESIGNED BY	SCALE 1" = 50'	DATE MAY 1977	PHONE 422-6080
DRAWN BY			
APPROVED BY			
Light, Elliott, & Associates		ENGINEERS PLANNERS SURVEYORS	
8508 ADELPHI ROAD · ADELPHI MARYLAND 20783			
PLAT # 3573		JOB NO. 4248	
		FILE NO. 651289	



DEVELOPER'S CERTIFICATION
 I CERTIFY THAT ALL DEVELOPMENT AND OR CONSTRUCTION WILL BE DONE ACCORDING TO THIS PLAN OF DEVELOPMENT & PLAN FOR EROSION & SEDIMENT CONTROL & I ALSO AUTHORIZE PERIODIC ONSITE INSPECTION BY THE HOWARD CO. SOIL CONSERVATION DISTRICT OR THEIR AGENTS, AS ARE DEEMED NECESSARY. DEVIATION FROM THIS PLAN WILL NOT BE MADE UNLESS AUTHORIZED BY THE HOWARD CO. SOIL CONSERVATION DISTRICT.
David R. Matthias
 OWNER AND DEVELOPER
 DAVID R. MATTHIAS
 #22 DEVON LANE
 WALKERSVILLE MD.
 2193 PH. 301-845-600

ENGINEER'S CERTIFICATION
 I CERTIFY THAT THIS PLAN FOR EROSION AND SEDIMENT CONTROL REPRESENTS A PRACTICAL & WORKABLE PLAN BASED ON MY PERSONAL KNOWLEDGE OF THE SITE CONDITIONS, AND THAT IT WAS PREPARED IN ACCORDANCE WITH THE REQUIREMENTS OF THE HOWARD CO. SOIL CONSERVATION DISTRICT.
Clinton G. Light
 CLINTON G. LIGHT P.E. #715
 REGISTERED ENGINEER & LAND SURVEYOR



UDR-SC-8C
July 1975

LIST OF STANDARD SYMBOLS

Symbol	Description	Notes
DD	Diversion Dike	2'
IS	Interceptor Dike	2'
PD	Perimeter Dike	2'
SB	Straw Bale Dike	2'
SD	Stabilized Construction Entrance	2'
SO	Stone Outlet Structure	2'
GS	Grassed Waterway	2'
LE	Level Spreader	2'
UB	Subsurface Drain	2'

Notes:
1. Arrow point downsize or to the outlet.
2. Dike and diversion symbols shall have a cross mark to clearly show where the structure begins and ends.

U. S. DEPARTMENT OF AGRICULTURE
SOIL CONSERVATION SERVICE
College Park, Md.

UDR-SC-8D
July 1975

PERMANENT SEEDINGS AND SEEDING DATES (continued)

(a) Use the seeding tolerance to provide a stand of grass for erosion control during summer.

(b) Use hollow seed.

(c) Preferable to seed in fall with seed from current year's crop.

(d) "South Indiana" certified or "Kentucky" Kentucky bluegrass are the only acceptable varieties for use in these areas.

(e) Mixture: 1:2.4:5.6:7.8:10:11:12:13 and 14 may be seeded during winter months in an emergency if 2 tons per acre of a well-balanced nutrient is used.

(f) Do not seed during this period if irrigation water is used, the 5 tons per acre of mulch.

(g) Use use 10 percent Kentucky bluegrass.

Notes:
1. Scientific names of these plants are in appendix B-10 and B-11.
2. Approved State Highway Administration mixtures may be used.

UDR-SC-8E
July 1975

TABLE 51-2
Maintenance Fertilization for Permanent Seedings
Use Soil Test Recommendations or Rates Shown Below

Mixture No.	Seeding Rate (lb./acre)	Population (per 1000 sq. ft.)	Time	Mowing
1,2,3,7,8,10,11	2-1/2 to 3	500 or more	11.5 Fall	Yearly, or as needed or if occasional mowing is desired.
4,5,6,7,9	2-1/2 to 3	400 or more	9.2 Fall	Yearly, or as needed or if occasional mowing is desired.
4,5	2-1/2 to 3	500 or more	11.5 Fall	Year following establishment and every 4-5 yrs. thereafter. Do not mow crown-vech.
9	2-1/2 to 3	500 or more	11.5 Spring	Year following establishment and every 3-4 yrs. thereafter. Not required. Not closer than 4" if occasional mowing is desired, & show in fall after seed has matured.
12,13,14	2-1/2 to 3	250 or more	5.8 September	How no closer than 2" for red fescue & Ry. bluegrass & no closer than 3" for tall fescue.

Notes:
1. Fertilization schedule applies alike to mixtures 12, 13 and 14.
2. Mowing schedule applies alike to mixtures 12, 13 and 14.

- SEQUENCE OF CONSTRUCTION**
1. OBTAIN GRADING PERMIT, NOTIFY HOWARD CO. BUREAU OF LICENSES, INSPECTIONS AND PERMITS 24 HOURS IN ADVANCE OF STARTING CONSTRUCTION.
 2. PROVIDE CONSTRUCTION ENTRANCES AT THE LOTS INDICATED ON PLAN.
 3. CONSTRUCT TEMPORARY PERIMETER DIKE.
 4. CONSTRUCT TEMPORARY DIVERSION DIKE.
 5. CONSTRUCT TEMPORARY STRAW BALE DIKE & UPGRADE TRAPS
 6. ROUGH GRADE LOTS.
 7. EXCAVATE BASEMENTS.
 8. CONSTRUCT HOUSES.
 9. FINISH GRADE LOTS, PAVE SIDEWALKS & DRIVEWAYS.
 10. INSTALL SODDING, SEEDING AND MULCH. (SEE SPECIFICATIONS THIS SHEET).
 11. DENY WATER AT TRAPS AND DISCHARGE INTO NATURAL DRAINAGE WAY.
 12. REMOVAL OF SEDIMENT CONTROL DEVICES AND STABILIZE ANY REMAINING DISTURBED AREAS WITH THE PERMISSION OF HOWARD COUNTY.
 13. MAINTENANCE: IMMEDIATELY FOLLOWING STABILIZATION UNTIL GROWTH IS ESTABLISHED.

U. S. DEPARTMENT OF AGRICULTURE
SOIL CONSERVATION SERVICE
College Park, Md.

Standard Drawing	Symbol
STRAW BALE DIKE	SB
DIVERSION DIKE	DD
PERIMETER DIKE	PD

U. S. DEPARTMENT OF AGRICULTURE
SOIL CONSERVATION SERVICE
College Park, Md.

Standard Drawing	Symbol
STRAW BALE DIKE	SB
DIVERSION DIKE	DD
PERIMETER DIKE	PD

SEDIMENT CONTROL NOTES

1. CONTRACTOR TO NOTIFY HOWARD COUNTY BUREAU OF LICENSES, INSPECTIONS AND PERMITS 24 HOURS PRIOR TO STARTING GRADING PLANS.
2. AFTER CLEARING, CONTRACTOR TO STRIP TOP SOIL WITHIN THE R/W AND ADDITIONAL AREA BEYOND R/W FOR SLOPES AND STOCKPILE TOP SOIL IN THE AREA DESIGNATED ON PLAN OR OTHER LOCATIONS AS DIRECTED BY THE FIELD ENGINEER. ALL TOPSOIL STOCKPILED SHALL BE SURROUNDED WITH PERIMETER DIKE WITH STONE FILTERS PLACED EVERY 100' (10' LENGTH) ALL STOCKPILES LEFT UN-DISTURBED FOR 3 MONTHS OR LONGER SHALL IMMEDIATELY BE FERTILIZED, LIMED, AND SEEDED WITH ANNUAL RYE GRASS AT RATE OF 1 1/2 TONS PER ACRE.
3. BEFORE GRADING OPERATIONS START, CONTRACTOR TO CONSTRUCT PERIMETER DIKES, SILT TRAPS WITH STONE FILTERS IN SWALES AND STONE CONSTRUCTION ENTRANCE.
4. AS GRADING OPERATIONS BEGIN, CONTRACTOR TO CONSTRUCT STONE FILTER BERMS AND STABILIZED CONSTRUCTION ENTRANCE ACROSS ROADWAY IN LOCATION SHOWN, AS EACH SECTION OR AREA IS BROUGHT TO SUBGRADE THESE STONE FILTER BERMS ARE TO BE LEFT IN PLACE AND MAINTAINED UNTIL STORM DRAINAGE SYSTEM HAS BEEN CONSTRUCTED AND ALL DISTURBED AREAS STABILIZED IN EACH AREA AFFECTED STONE CONSTRUCTION ENTRANCE TO BE LEFT IN PLACE UNTIL SUB-BASE HAS BEEN LAID ON ROADWAYS.
5. AS STORM DRAINAGE SYSTEM IS CONSTRUCTED EACH INLET SHALL BE USED AS A TEMPORARY SILT TRAP AS DETAILED ON THIS SHEET AT THIS TIME ANY STONE FILTER BERM ABOVE SAID CONSTRUCTED INLET MAY BE REMOVED AND THIS STONE PLACED AT OTHER LOCATIONS AS SHOWN ON PLAN. THE INLET SILT TRAPS SHALL REMAIN IN OPERATION, WITH PROPER MAINTENANCE UNTIL ROAD BED SUB-BASE HAS BEEN LAID AND ALL DISTURBED SHOULDERS AND SIDE SLOPES HAVE BEEN STABILIZED WITH SEED AND MULCHED. PLYWOOD TO BE PLACED OVER THE OPEN END OF ANY UNFINISHED STORM DRAIN AT THE END OF EACH WORKING DAY.
6. SHOULDERS AND SLOPES SHALL IMMEDIATELY BE SEEDED AND MULCHED AS EACH SECTION OR AREA HAS BEEN BROUGHT TO GRADE: SEEDBED PREPARATION (PER ACRE)
2 TONS LIMESTONE
600 LBS. 0-20-20 WORKED TO 3" DEPTH
400 LBS. 38-0-0 AREA FARM FERTILIZER
500 LBS. 10-20-20
SEED USED SHALL BE PREDOMINATELY KENTUCKY 31 TALL FESCUE @ 60 LBS./AC. APPLIED TO A FIRM MOIST SEED BED. AFTER SEEDING UNIFORMLY MULCH THESE AREAS WITH UNWEATHERED SMALL GRAIN STRAW (PREFERABLY WHEAT) @ THE RATE OF 1.5 TONS/ACRE. AFTER MULCHING USE ASPHALT TIE DOWN (LIQUID ASPHALT) RAPID-CURING (KC 70, KC 250 OR KC 800) APPLIED @ 0.1 GAL./SQ. YD. SEEDING AREAS TO BE WATERED AS NECESSARY UNTIL PLANT GROWTH HAS BEEN FIRMLY ESTABLISHED.
7. OTHER SEDIMENT CONTROL MEASURES MAY BE NECESSARY IN ADDITION TO THOSE OUTLINED AND IF INSPECTION SO DEEMS.
8. ALL SEDIMENT CONTROL MEASURES TO BE BUILT ACCORDING TO THE "STANDARDS AND SPECIFICATIONS FOR SOIL EROSION AND SEDIMENT CONTROL IN DEVELOPING AREAS".
9. NO SLOPES SHALL BE GREATER THAN 3:1.
- * 10. STRAW BALES TO BE PLACED AROUND ALL EXISTING INLETS AT THE TIME GRADING BEGINS.

UDR-SC-8F
July 1975

TABLE 51-3
Permanent Seedings and Seeding Dates

Mixture No.	Seeding Rate (lb./acre)	Population (per 1000 sq. ft.)	Time	Mowing
1,2,3,7,8,10,11	2-1/2 to 3	500 or more	11.5 Fall	Yearly, or as needed or if occasional mowing is desired.
4,5,6,7,9	2-1/2 to 3	400 or more	9.2 Fall	Yearly, or as needed or if occasional mowing is desired.
4,5	2-1/2 to 3	500 or more	11.5 Fall	Year following establishment and every 4-5 yrs. thereafter. Do not mow crown-vech.
9	2-1/2 to 3	500 or more	11.5 Spring	Year following establishment and every 3-4 yrs. thereafter. Not required. Not closer than 4" if occasional mowing is desired, & show in fall after seed has matured.
12,13,14	2-1/2 to 3	250 or more	5.8 September	How no closer than 2" for red fescue & Ry. bluegrass & no closer than 3" for tall fescue.

Notes:
1. Fertilization schedule applies alike to mixtures 12, 13 and 14.
2. Mowing schedule applies alike to mixtures 12, 13 and 14.

UDR-SC-8G
July 1975

TABLE 51-4
Permanent Seedings and Seeding Dates

Mixture No.	Seeding Rate (lb./acre)	Population (per 1000 sq. ft.)	Time	Mowing
1,2,3,7,8,10,11	2-1/2 to 3	500 or more	11.5 Fall	Yearly, or as needed or if occasional mowing is desired.
4,5,6,7,9	2-1/2 to 3	400 or more	9.2 Fall	Yearly, or as needed or if occasional mowing is desired.
4,5	2-1/2 to 3	500 or more	11.5 Fall	Year following establishment and every 4-5 yrs. thereafter. Do not mow crown-vech.
9	2-1/2 to 3	500 or more	11.5 Spring	Year following establishment and every 3-4 yrs. thereafter. Not required. Not closer than 4" if occasional mowing is desired, & show in fall after seed has matured.
12,13,14	2-1/2 to 3	250 or more	5.8 September	How no closer than 2" for red fescue & Ry. bluegrass & no closer than 3" for tall fescue.

Notes:
1. Fertilization schedule applies alike to mixtures 12, 13 and 14.
2. Mowing schedule applies alike to mixtures 12, 13 and 14.

SILT TRAP DATA

SILT TRAP #1	SILT TRAP #2
TOTAL DRAINAGE AREA = 1.26 AC.	TOTAL DRAINAGE AREA = 3.3 AC.
VOLUME REQUIRED = 126 x 67 = 85 CU. YDS.	VOLUME REQUIRED = 3.3 x 67 = 221 CU. YDS.
VOLUME AVAILABLE = 259 CU. YDS.	VOLUME AVAILABLE = 259 CU. YDS.
CLEANOUT ELEV. = 1/2 CAPACITY	CLEANOUT ELEV. = 1/2 CAPACITY

SEEDING SCHEDULE

Mixture No.	Seeding Rate (lb./acre)	Population (per 1000 sq. ft.)	Time	Mowing
1,2,3,7,8,10,11	2-1/2 to 3	500 or more	11.5 Fall	Yearly, or as needed or if occasional mowing is desired.
4,5,6,7,9	2-1/2 to 3	400 or more	9.2 Fall	Yearly, or as needed or if occasional mowing is desired.
4,5	2-1/2 to 3	500 or more	11.5 Fall	Year following establishment and every 4-5 yrs. thereafter. Do not mow crown-vech.
9	2-1/2 to 3	500 or more	11.5 Spring	Year following establishment and every 3-4 yrs. thereafter. Not required. Not closer than 4" if occasional mowing is desired, & show in fall after seed has matured.
12,13,14	2-1/2 to 3	250 or more	5.8 September	How no closer than 2" for red fescue & Ry. bluegrass & no closer than 3" for tall fescue.

SEEDING SCHEDULE

Mixture No.	Seeding Rate (lb./acre)	Population (per 1000 sq. ft.)	Time	Mowing
1,2,3,7,8,10,11	2-1/2 to 3	500 or more	11.5 Fall	Yearly, or as needed or if occasional mowing is desired.
4,5,6,7,9	2-1/2 to 3	400 or more	9.2 Fall	Yearly, or as needed or if occasional mowing is desired.
4,5	2-1/2 to 3	500 or more	11.5 Fall	Year following establishment and every 4-5 yrs. thereafter. Do not mow crown-vech.
9	2-1/2 to 3	500 or more	11.5 Spring	Year following establishment and every 3-4 yrs. thereafter. Not required. Not closer than 4" if occasional mowing is desired, & show in fall after seed has matured.
12,13,14	2-1/2 to 3	250 or more	5.8 September	How no closer than 2" for red fescue & Ry. bluegrass & no closer than 3" for tall fescue.

DEVELOPERS CERTIFICATION
I CERTIFY THAT ALL DEVELOPMENT AND/OR CONSTRUCTION WILL BE DONE ACCORDING TO THIS PLAN OF DEVELOPMENT & PLAN FOR EROSION AND SEDIMENT CONTROL & I ALSO AUTHORIZE PERIODIC ON-SITE INSPECTION BY THE HOWARD CO. SOIL CONSERVATION DIST. OR THEIR AUTHORIZED AGENTS, AS ARE DEEMED NECESSARY. DEVIATION FROM THIS PLAN WILL NOT BE MADE UNLESS AUTHORIZED BY THE HOWARD CO. SOIL CONSERVATION DISTRICT.

David R. Matthias, Inc.
DAVID R. MATTHIAS, INC.
#22 DEVON LANE
WALKERSVILLE, MD. 21783

ENGINEER'S CERTIFICATION
I CERTIFY THAT THIS PLAN FOR EROSION & SEDIMENT CONTROL REPRESENTS A PRACTICAL & WORKABLE PLAN BASED ON MY PERSONAL KNOWLEDGE OF THE SITE CONDITIONS, AND THAT IT WAS PREPARED IN ACCORDANCE WITH THE REQUIREMENTS OF THE HOWARD CO. SOIL CONSERVATION DISTRICT.

Clinton G. Light, Jr.
CLINTON G. LIGHT, JR. E.L.S. MD. #715

REVIEWED FOR HOWARD S.C.D. AND MEETS TECHNICAL REQUIREMENTS.

Wendell Bundelle
SIGNATURE DATE
U.S. SOIL CONSERVATION SERVICE

THIS DEVELOPMENT PLAN IS APPROVED FOR SOIL EROSION AND SEDIMENT CONTROL BY THE HOWARD CO. SOIL CONSERVATION DISTRICT.

John D. Myers
APPROVED DATE 6-16-77
HOWARD S.C.D.

APPROVED FOR PUBLIC WATER AND PUBLIC SEWERAGE SYSTEMS, HOWARD COUNTY HEALTH DEPARTMENT

Country Health Officer DATE 7-7-77

APPROVED: HOWARD COUNTY OFFICE OF PLANNING AND ZONING

PLANNING DIRECTOR DATE 7-8-77

CHIEF, DIVISION OF LAND DEVELOPMENT DATE

APPROVED FOR PUBLIC WATER, PUBLIC SEWERAGE AND STORM DRAINAGE SYSTEMS AND ROADS

HOWARD COUNTY DEPARTMENT OF PUBLIC WORKS

DIRECTOR DATE 7-10-77
CHIEF, BUREAU OF HIGHWAYS DATE

APPROVED

HOWARD COUNTY, MARYLAND
DATE 6-8-77

SHEET 3 OF 3

SEDIMENT CONTROL DETAILS
FLAT TWO, SECTION 1, AREA 1, BLOCK 'A', LOTS 19-26
AND BLOCK 'B', LOTS 15 AND 16-23
RESUBDIVISION OF "WINFIELD SEC. A" PLOT BOOK A FOLIO 85

GLENMONT
ELECTION DIST #6 HOWARD COUNTY, MARYLAND

DESIGNED BY SCALE DATE MAY 1977 PHONE: 422-6808

DRAWN BY Light, Elliott, & Associates ENGINEERS PLANNERS SURVEYORS 8308 ADELPHI ROAD - ADELPHI MARYLAND 20785

APPROVED BY PLAT #3573 JOB NO. LR 99 FILE NO. LR 99

SDP-77-81