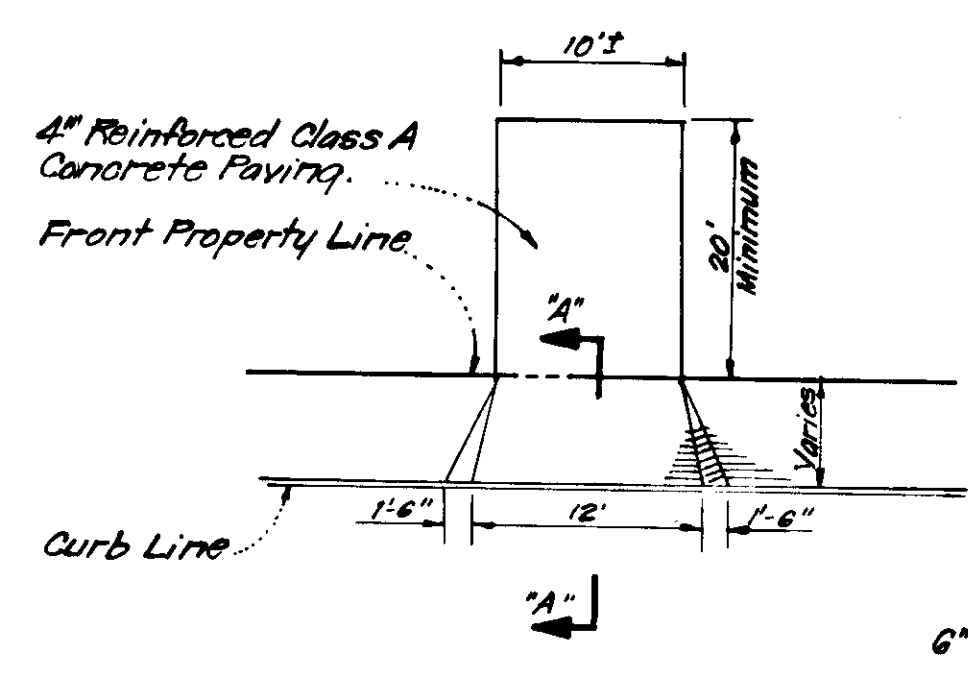
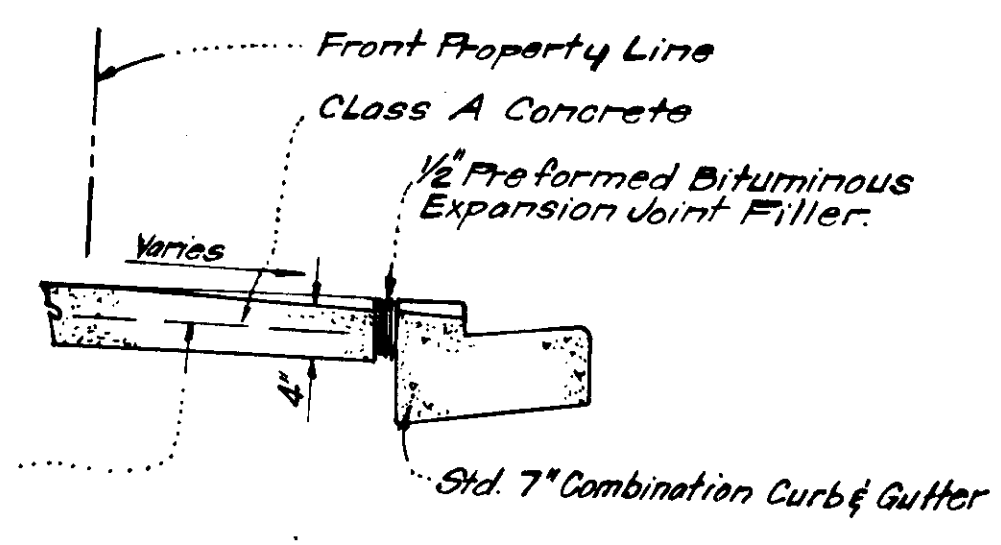


THE HOWARD RESEARCH & DEVELOPMENT CORPORATION
463/196



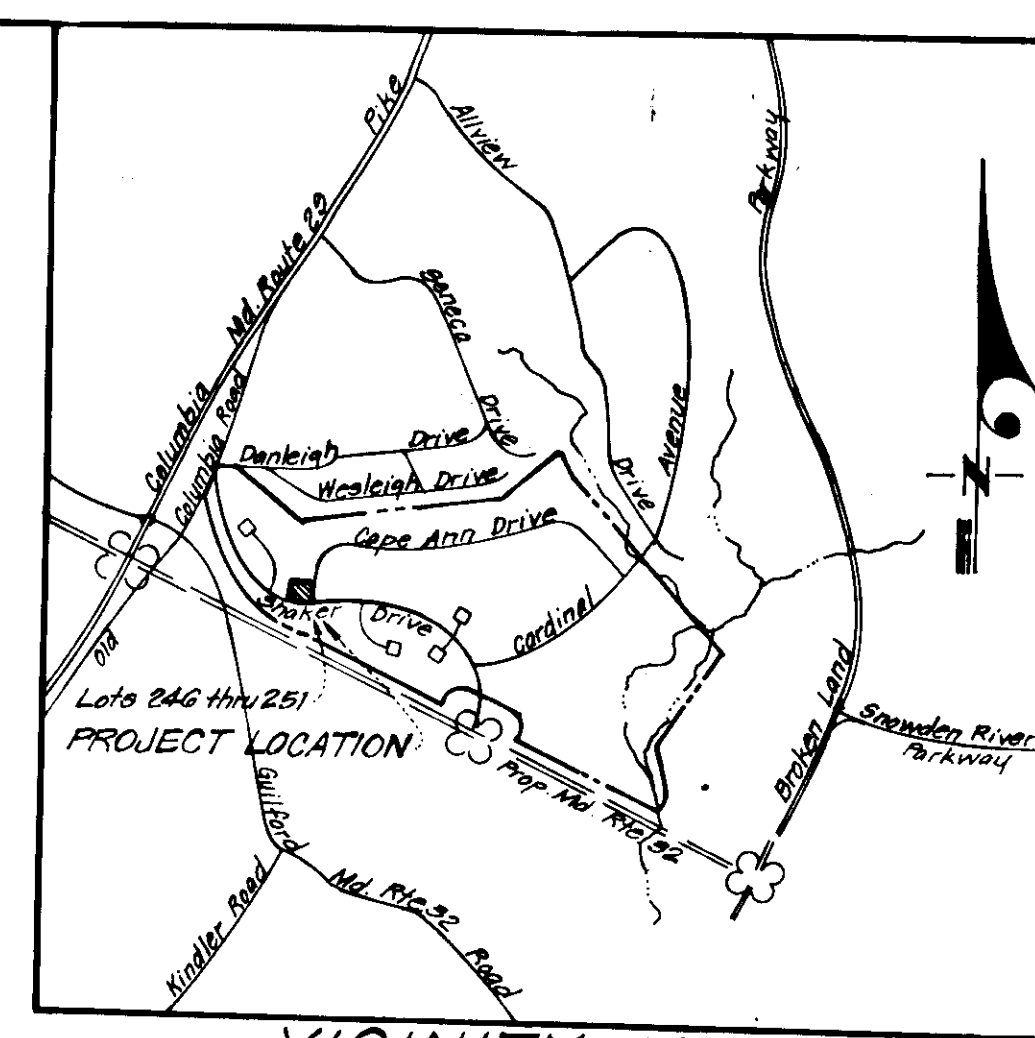
NOTE: Use Residential Driveway Entrance, Howard Co. Dwg. D-54, pg. 89, Except where driveway abuts Modified Combination Curb & Gutter.

PLAN
DRIVEWAY ENTRANCE DETAIL
No Scale

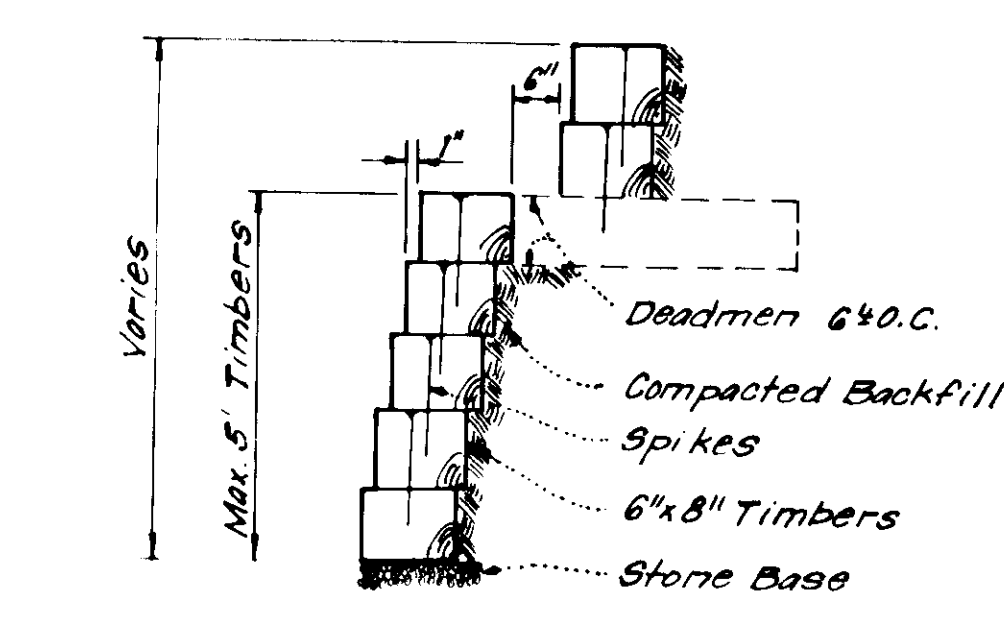


NOTE: All Materials & Construction shall be in accordance with Howard Co. Road Construction Code.

SECTION A-A



VICINITY MAP
SCALE: 1" = 2,000'



TIMBER RETAINING WALL
No Scale

LEGEND

- 1. Contour Interval 2 Ft.
- 2. Existing Contour - - - - -
- 3. Proposed Contour - - - - -
- 4. Spot Elevation + 62.5
- 5. Direction of Drainage - - - - -
- 6. Existing Trees to be Retained (Symbol)
- 7. Yard Requirements: Front: 20 Ft. on 50' Wide Street
50 Ft. on 60' Wide Street
Side: 7.5' Ft. (Min.)
- 8. Timber Retaining Wall (Symbol)

GENERAL NOTES

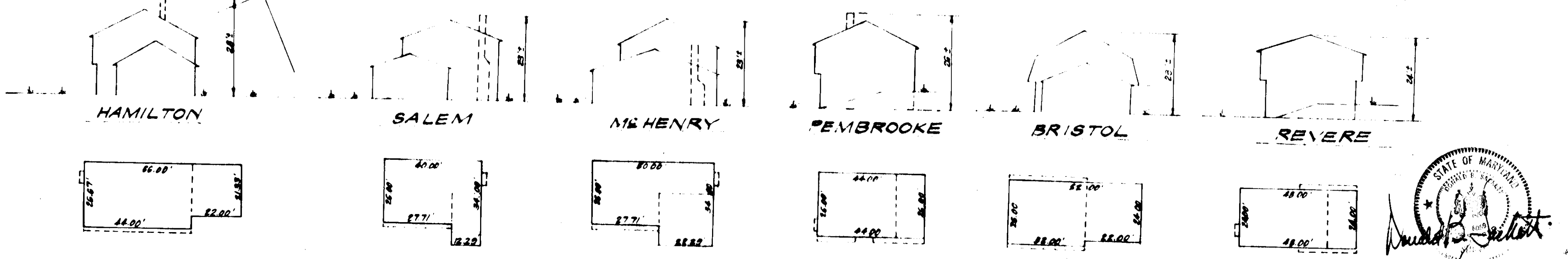
- 1. The Land included in this Plan is zoned New Town (S.F.M.D.)
- 2. The Lots shown on this Plan are covered by Final Development Plan Phase 14.8 recorded in Plat Book 28, Folios 70 to 79.
- 3. All Coordinates are based on Maryland State Grid System. Elevations are based on U.S. Coast and Geodetic Survey Mean Sea Level Datum of 1929.
- 4. The Area covered in this submission is located on Tax Map No. 42.
- 5. The Total Area included in this plan is 1.131 Acres.
- 6. Cape Ann Drive & Shaker Drive are public and existing.
- 7. Any damage to County Owned Right of Ways or Paving shall be corrected at the developer's expense.
- 8. The Ingress and Egress and Maintenance Documents for Common Open Area Lot 318 were recorded in Liber B-4 at Folio 518.

APPROVED
DIVISION OF LAND DEVELOPMENT
HOWARD COUNTY, MARYLAND
DATE 3-7-77
[Signature]

APPROVED FOR PUBLIC WATER AND PUBLIC SEWERAGE SYSTEMS, HOWARD COUNTY HEALTH DEPARTMENT
DATE 4-19-77

APPROVED FOR PUBLIC WATER AND PUBLIC SEWERAGE SYSTEMS AND PUBLIC ROADS, HOWARD COUNTY DEPARTMENT OF PUBLIC WORKS
DATE 4-20-77

APPROVED FOR PUBLIC WATER AND PUBLIC SEWERAGE SYSTEMS AND PUBLIC ROADS, HOWARD COUNTY DEPARTMENT OF PUBLIC WORKS
DATE 4-18-77



TYPICAL HOUSES

NOTE: For bearings and distances of individual lot lines, see record plat recorded as plat 3577.

CLARK • FINEROCK & SACKETT
ENGINEERS • PLANNERS • SURVEYORS

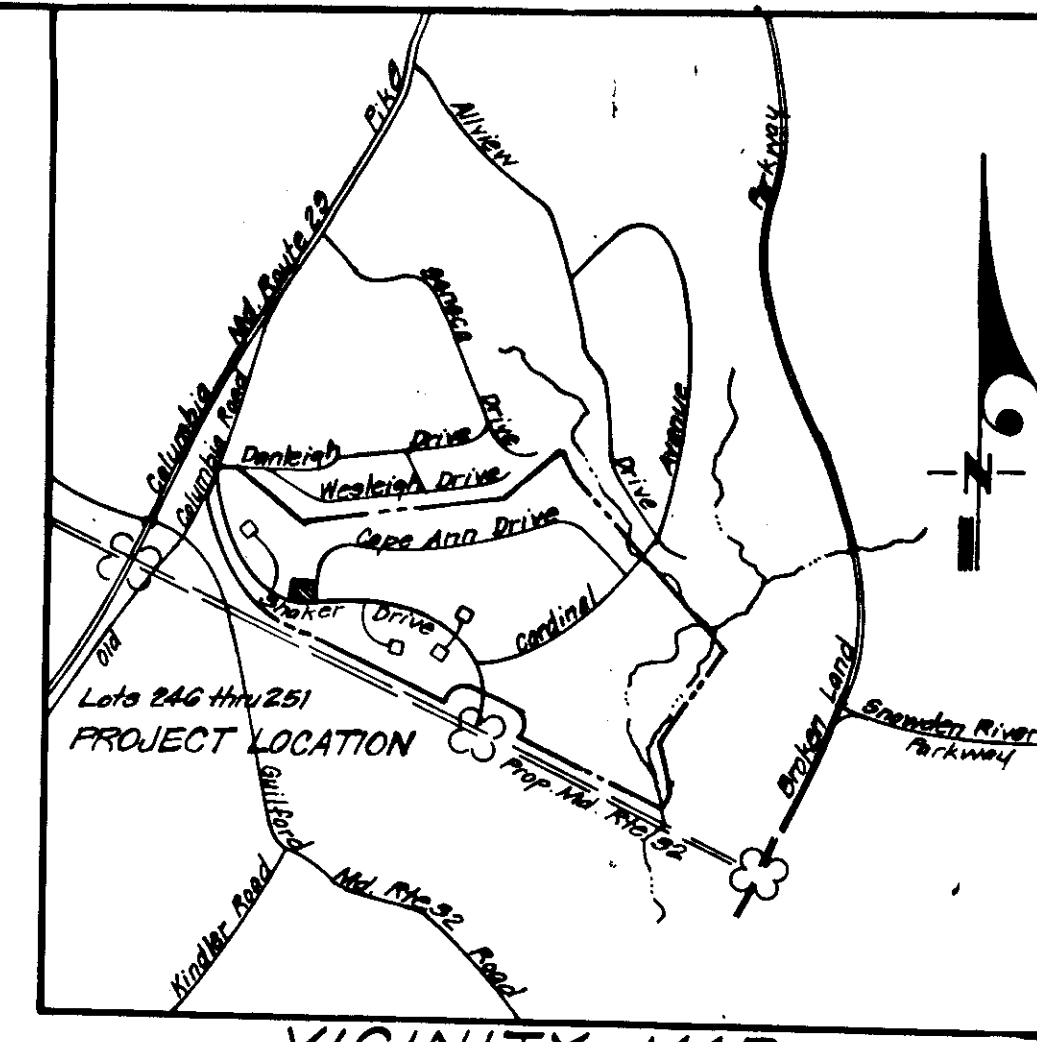
DESIGNED: DBS. SITE DEVELOPMENT PLAN
DRAWN: K.I.W. LOTS 246 THRU 251
CHECKED: DBS. COLUMBIA
DATE: Feb. 1977

VILLAGE OF KINGS CONTRIVANCE
SECTION 1 AREA 1
6th ELECTION DISTRICT
HOWARD COUNTY, MARYLAND

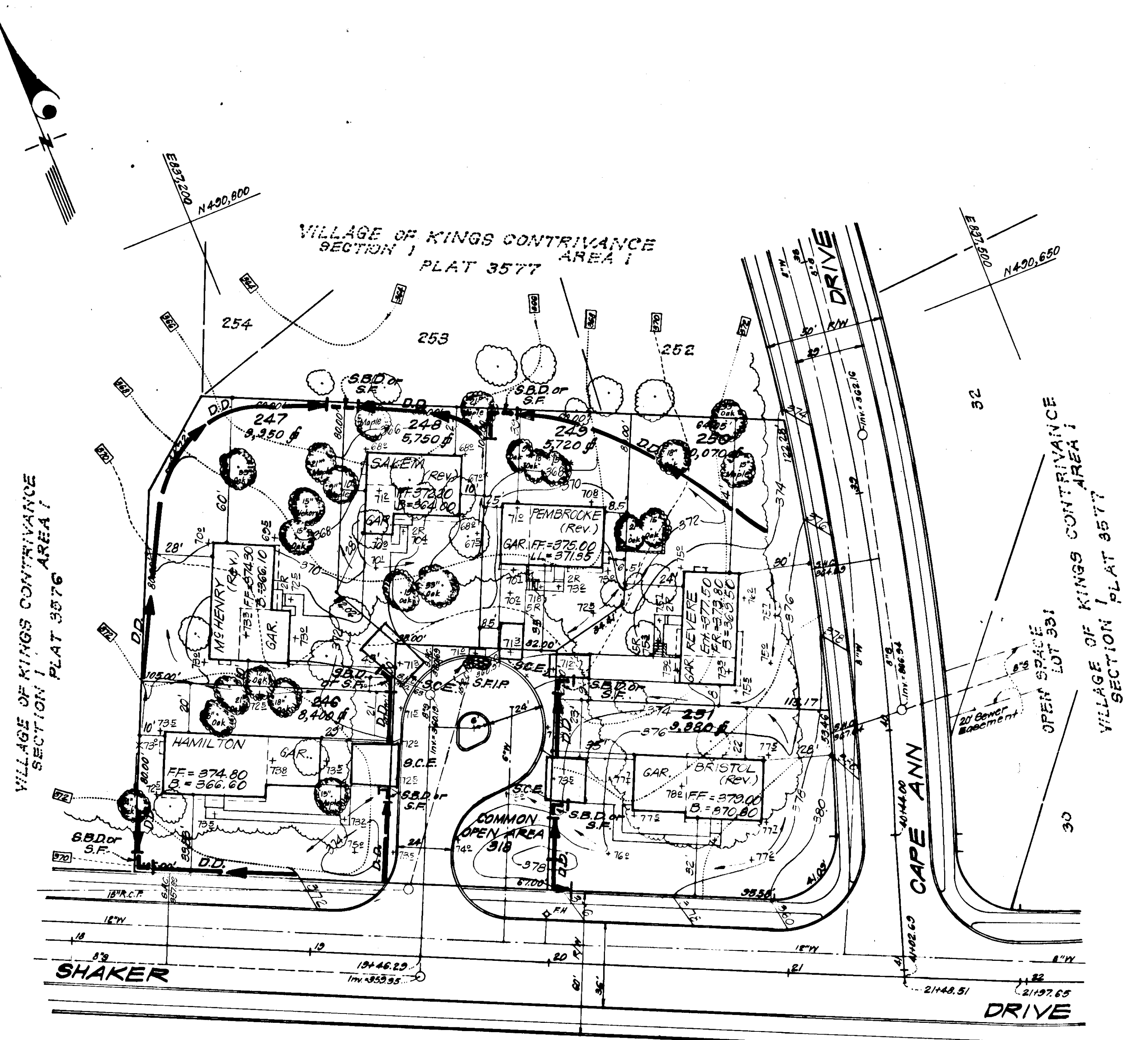
FOR: THE RYLAND GROUP INC., Col. Division
Suite 200 I.O.M. Office Bldg.
Columbia, Maryland 21045

SCALE: 1" = 20'
DRAWING: 1 of 3
JOB NO.:
FILE NO.: 1238-X

SDP-77-59. See Also P.C. 856 1228-51.



VICINITY MAP
SCALE: 1" = 200'



THE HOWARD RESEARCH & DEVELOPMENT CORPORATION
463/126

LEGEND

1. Contour Interval 2 Ft.
2. Existing Contour - - - - - 662
3. Proposed Contour ————— 662
4. Spot Elevation + 62.5
5. Direction of Drainage —————>
6. Existing Trees to be Retained (O)
7. Yard Requirements: Front: 20 Ft. on 50' Wide Street
80 Ft. on 60' Wide Street
Side: 7.5' Ft. (Min.)
8. Diversion Dike ————— D.D. —————>
9. Straw Bale Dike or Silt Fence ————— S.B.D. or S.F.
10. Stone Filter Inlet Protection (S.F.I.P.)
11. Stone Construction Entrance [] S.C.E.

APPROVED
DIVISION OF LAND DEVELOPMENT
HOWARD COUNTY, MARYLAND
DATE 3-7-77
[Signature]

NOTE: For bearings and distances of individual lot lines, see record plat recorded as plat 3577.

APPROVED FOR PUBLIC WATER AND PUBLIC SEWERAGE SYSTEMS, HOWARD COUNTY HEALTH DEPARTMENT
COUNTY HEALTH OFFICER *[Signature]* 4-19-77
DATE
APPROVED FOR PLANNING & ZONING
PLANNING DIRECTOR *[Signature]* 4-20-77
DATE
CHIEF DIVISION OF LAND DEVELOPMENT
DATE 4-11-77
APPROVED FOR PUBLIC WATER AND PUBLIC SEWERAGE, STORM DRAINAGE SYSTEMS AND PUBLIC ROADS, HOWARD COUNTY DEPARTMENT OF PUBLIC WORKS
DIRECTOR *[Signature]* 4-11-77
DATE
CHIEF BUREAU OF HIGHWAYS
DATE 4-18-77

Reviewed for HOWARD S.C.D.
and most recent amendments
E. H. Hanna 4-9-77
U.S. Soil Conservation Service

THIS DEVELOPMENT PLAN IS APPROVED FOR SOIL EROSION AND SEDIMENT CONTROL BY THE HOWARD SOIL CONSERVATION DISTRICT.

[Signature] 4-4-77
Date

DEVELOPER'S CERTIFICATE

I certify that all development and/or construction will be done according to this plan of development and plan for Erosion and Sediment Control, and I also authorize periodic on-site inspection by the Howard Soil Conservation District or their authorized agents as are deemed necessary. Deviation from this plan will not be made unless authorized by the Howard Soil Conservation District.

ENGINEER'S CERTIFICATE

I hereby certify that this plan for Erosion and Sediment Control represents a practical and workable plan based on my personal knowledge of the site conditions and that it was prepared in accordance with the requirements of the Howard Soil Conservation District.

[Signature] 4-11-77
G. Nelson Clark, P.E., Date



CLARK • FINEFROCK & SACKETT ENGINEERS • PLANNERS • SURVEYORS 11315 LOCKWOOD DRIVE SILVER SPRING, MARYLAND 20904 (301) 593 3400		
DESIGNED D.B.S.	SITE DEVELOPMENT PLAN SEDIMENT & EROSION CONTROL PLAN LOTS 246 THRU 251 COLUMBIA VILLAGE OF KINGS CONTRIVANCE SECTION 1 6TH ELECTION DISTRICT HOWARD COUNTY, MARYLAND FOR: THE RYLAND GROUP, INC., Cbl. Division Suite 200 V.O.M. Office Bldg. Columbia, Maryland 21045	SCALE 1" = 30'
DRAWN K.I.W.		DRAWING 2d-3
CHECKED G.N.C.		JOB NO.
DATE Feb. 1977		FILE NO. J2285E
		SDP-77-59

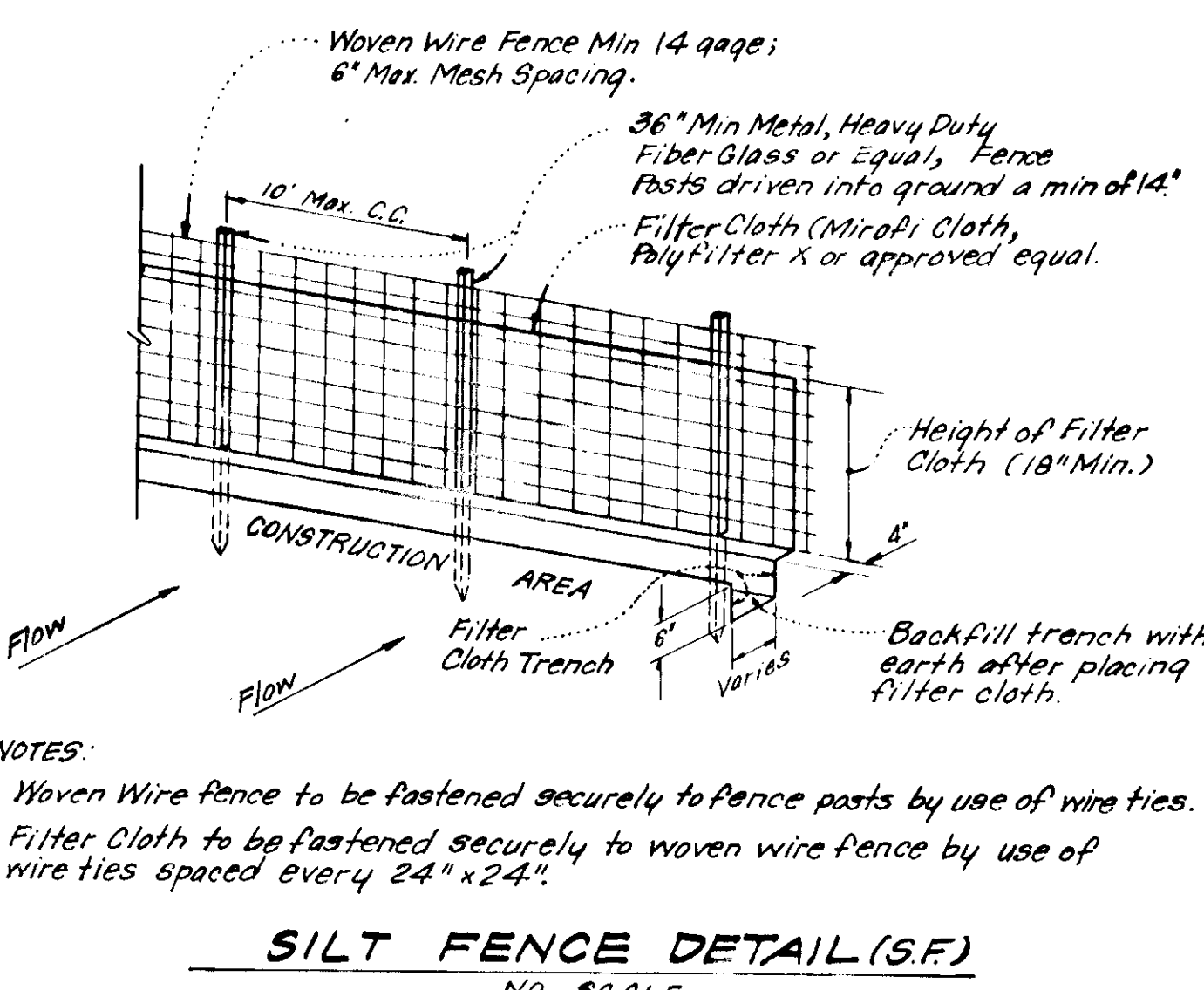
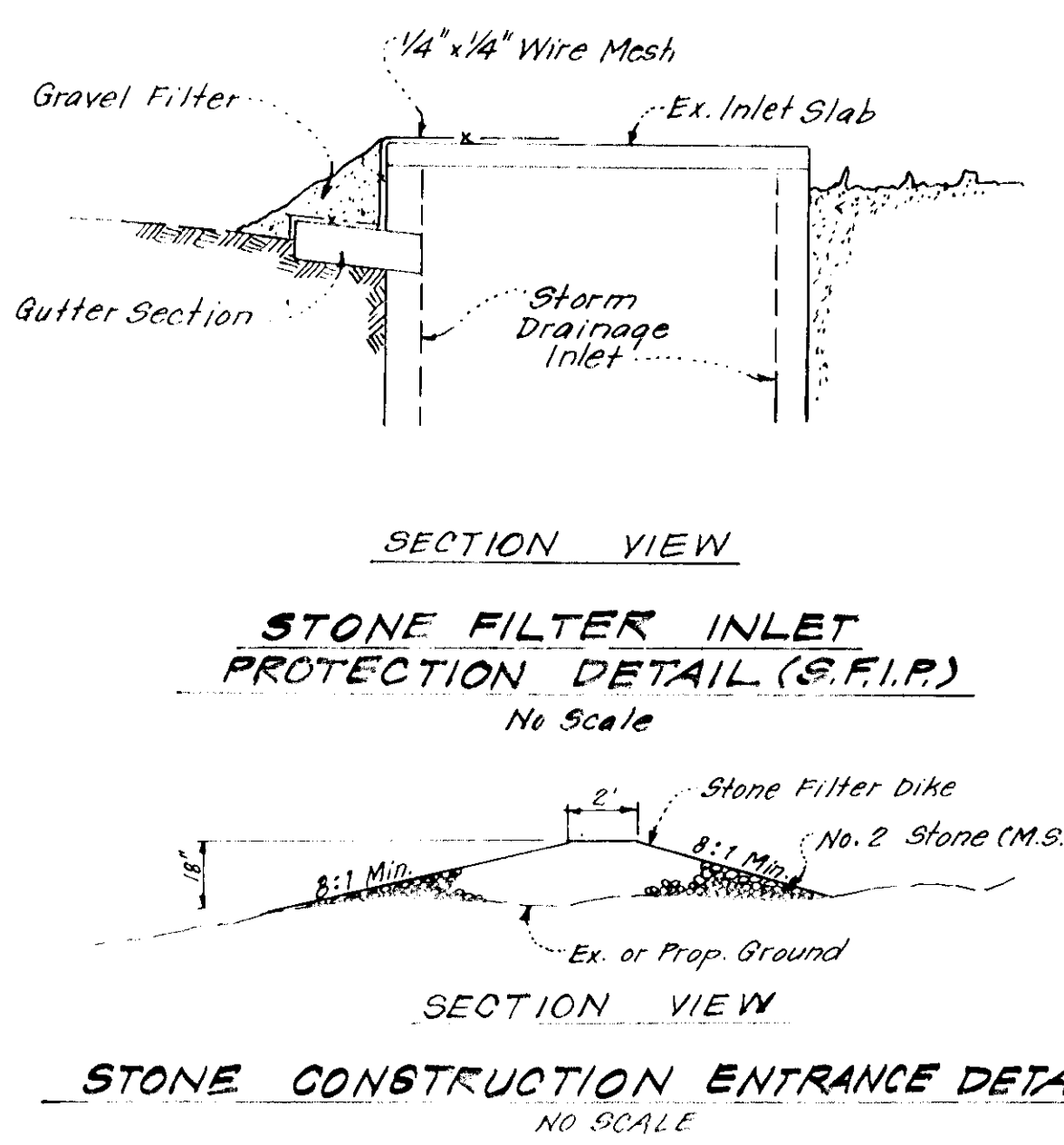
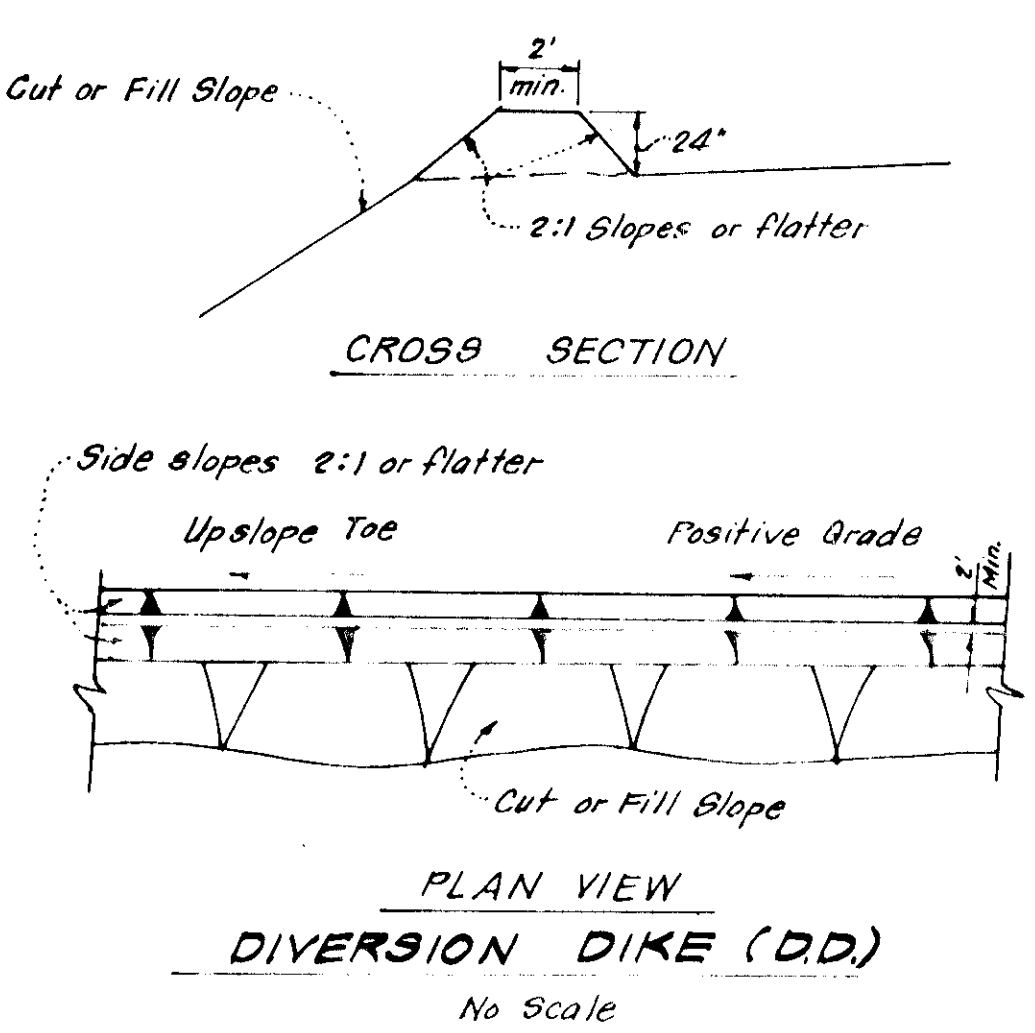
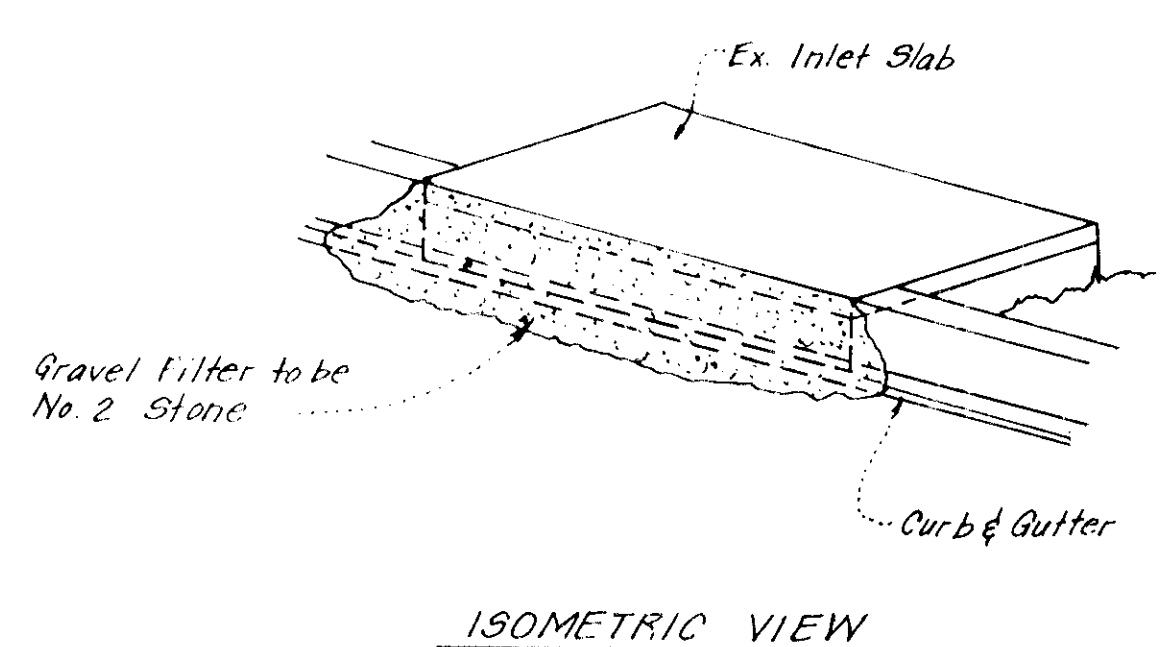
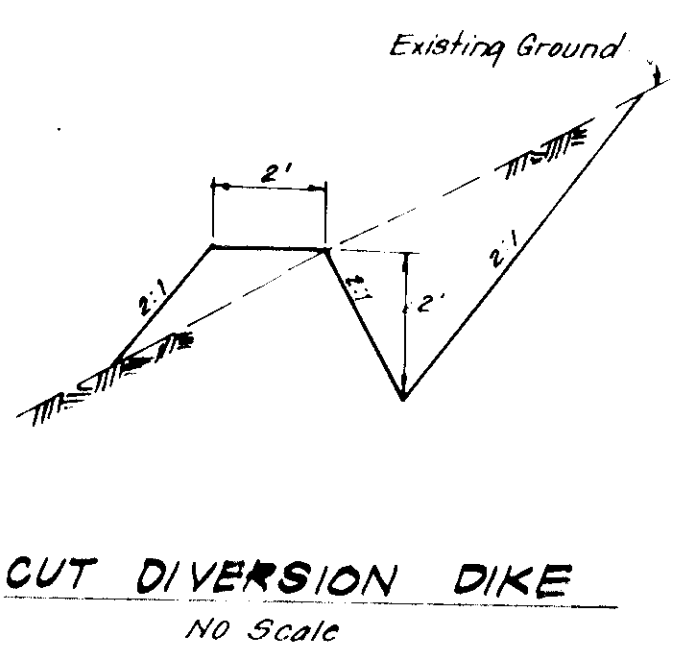
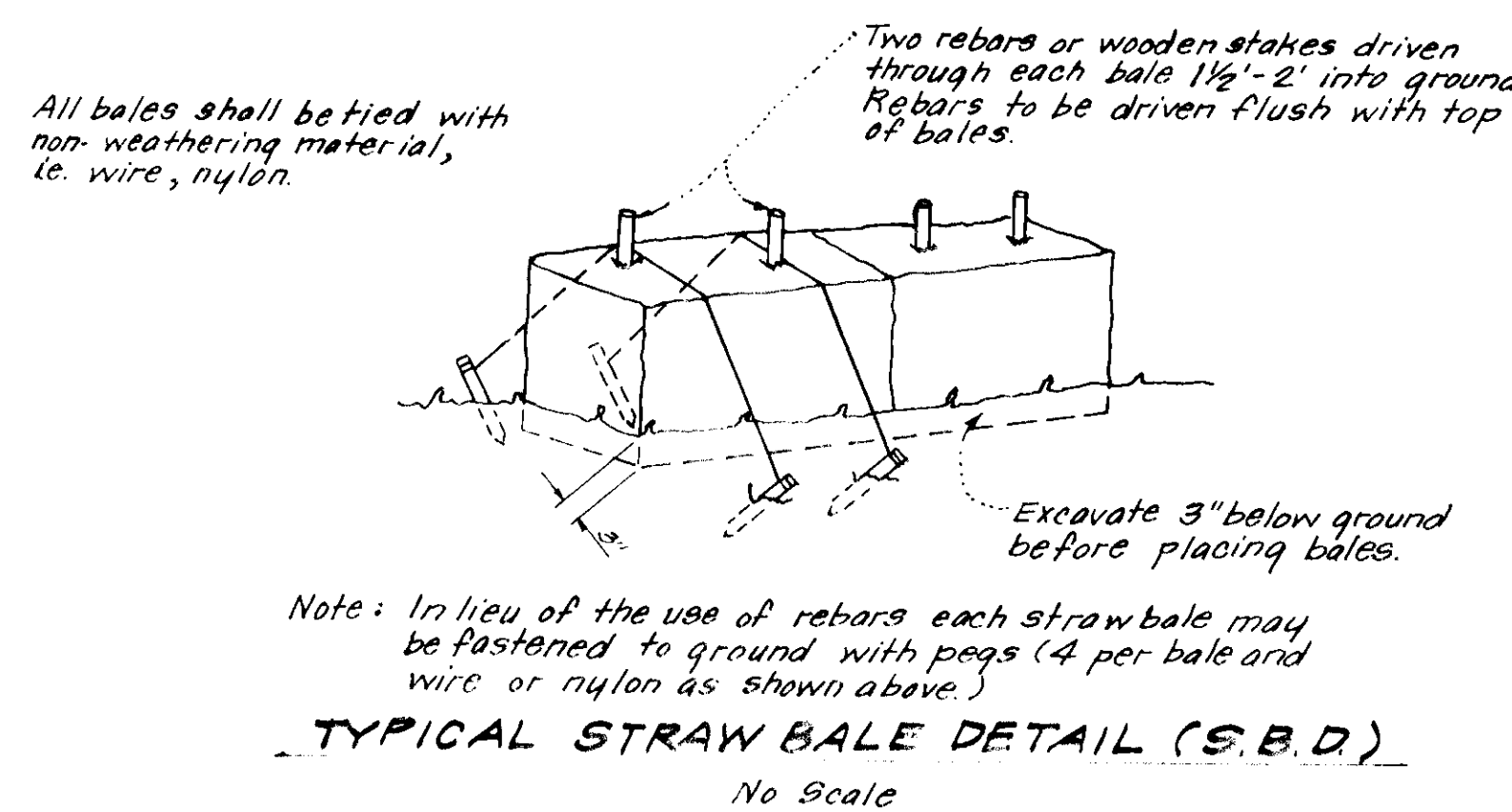
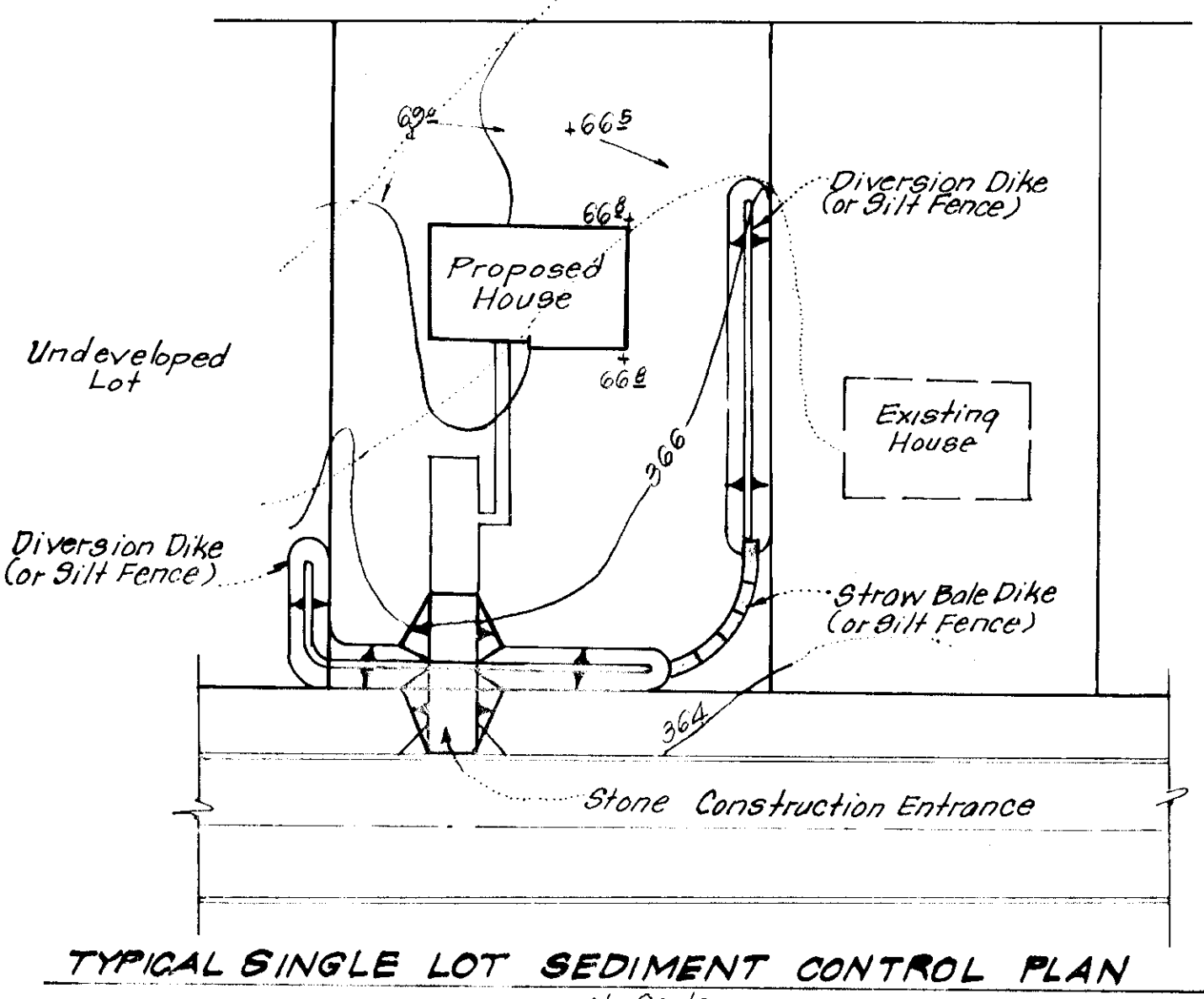
GENERAL NOTES

- All Sediment and Erosion Control Measures will be installed and stabilized according to this plan prior to any other grading, clearing, or disturbance of the existing surface of the site. See Note #5 for stabilization except that the seed mixture will be annual rye applied at the rate of 1.4 lbs/1000 sq.ft.
- Notify the Bureau of Inspections and Permits at least 24 hrs before starting any work.
- All Sediment Control Practices to conform to the Standards and Specifications for Soil Erosion and Sediment Control in Developing Areas and shall be adjusted to meet actual field conditions.
- Stabilization of disturbed ground to be done as soon after construction as possible.
- All grading shall be treated in accordance with the following Specifications:
 - Seed - certified 85% germination applied at the rate of 3lbs/1000 sq.ft. mixture - 40% Kentucky Blue, 20% Chewing Fescue, 20% Kentucky 31, and 20% Annual Rye.
 - Fertilizer - 10-10-10 applied at the rate of 23 lbs/1000 sq.ft. Ground agricultural lime or dolomitic lime applied at the rate of 46 lbs/1000 sq.ft.
 - Mulch - Weed free grain straw applied at the rate of 70 lbs/1000 sq.ft. Mulch shall be secured to the ground by any approved method i.e. asphalt tacks, chemical binder, wood chips, etc.
- All Structural Sediment Control Measures are to remain in place until permission for their removal has been obtained from the Bureau of Inspections and Permits.
- On site inspection and maintenance of all sediment control measures including cleanout of sediment traps and dikes, and proper establishment of all planned vegetative measures will be the responsibility of the Developer or his representative on the site, on a continuing day to day basis.
- Protection of stabilized area from sediment runoff shall be provided by the use of an approved sediment control device, i.e. straw bales, diversion dikes, etc.

9. Site Analysis:

Total Area:	1.131 Ac.
Area to be Roofed:	0.207 Ac.
Area to be Paved:	0.077 Ac.
Area to be Seeded:	0.420 Ac.
Area Undisturbed:	0.427 Ac.

- The Contractor shall keep all public roads free of sediment deposits left from traffic leaving construction site.
- Stabilized Construction Entrances shall be constructed at all construction entrances.
- CONSTRUCTION SEQUENCE:**
 - Install Sediment and Erosion Control Devices and stabilize Diversion Dikes.
 - Excavate for foundations and rough grade.
 - Erect structures, drive ways and sidewalks.
 - Final grade and stabilize in accordance with General Note #5.
- If Houses are to be constructed on an "As-Sold" basis at random, Single Lot Sediment Control, as shown on this sheet shall be implemented.
- It will be the Developer's responsibility, to provide additional Sediment and Erosion Control Devices to protect stabilized areas during construction.
- Total Amount of Straw Bales or Silt Fence = 70LF



- NOTES:**
- Woven Wire Fence to be fastened securely to fence posts by use of wire ties.
 - Filter Cloth to be fastened securely to woven wire fence by use of wire ties spaced every 24" x 24".

APPROVED
DIVISION OF LAND DEVELOPMENT
DATE 3-7-77

APPROVED FOR PUBLIC WATER AND PUBLIC SEWERAGE SYSTEMS, HOWARD COUNTY HEALTH DEPARTMENT.
DATE 4-19-77
APPROVED FOR PLANNING AND ZONING, HOWARD COUNTY DEPARTMENT OF PLANNING AND ZONING.
DATE 4-19-77
APPROVED FOR PUBLIC WATER AND PUBLIC SEWERAGE STORM DRAINAGE SYSTEMS & PUBLIC ROADS, HOWARD COUNTY DEPARTMENT OF PUBLIC WORKS.
DATE 4-19-77

Reviewed for HOWARD COUNTY S.C.D. and meets Technical Requirements
Signature: Eve V. Harman
Date: 4/4/77
U.S. Soil Conservation Service

THIS DEVELOPMENT PLAN IS APPROVED FOR SOIL EROSION AND SEDIMENT CONTROL BY THE HOWARD COUNTY CONSERVATION DISTRICT.

Approved: John D. Meyer
Date: 4-4-77

DEVELOPER'S CERTIFICATE
I certify that all development and construction will be done according to the plan, specifications and plan for Erosion and Sediment Control, and I authorize periodic on-site inspection by the Howard County Conservation District or their authorized agents at an agreed-upon time. Deviation from this plan will not be made unless authorized by the Howard County Conservation District.

Signature: Jeffrey Carpenter
Date: 3/14/77

ENGINEER'S CERTIFICATE
I hereby certify that this plan, Erosion and Sediment Control represents a true and accurate plan based on my personal knowledge of the site conditions and that I am a duly licensed engineer with the registration number 10000 in the State of Maryland.

Signature: G. Nelson Clark
Date: 2-14-77



CLARK • FINEFROCK & SACKETT
ENGINEERS • PLANNERS • SURVEYORS
11315 LOCKWOOD DRIVE SILVER SPRING, MARYLAND 20904 (301) 593-3400

DESIGNED BY D.B.S.	SITE DEVELOPMENT PLAN SEDIMENT & EROSION CONTROL PLAN LOTS 240 THRU 251 COLUMBIA	SCALE As Shown
DRAWN BY K.I.W.		3 of 3
CHECKED BY G.N.C.	VILLAGE OF KING'S CONTRIVANCE SECTION 1 AREA 1 6th ELECTION DISTRICT HOWARD COUNTY, MARYLAND	JOB NO.
DATE Feb, 1977	FOR THE RYLAND GROUP, INC. Col. Division Suite 200 V.O.M. Office Bldg. Columbia, Md. 21045	FILE NO. 1228-5E

SDP-77-59c