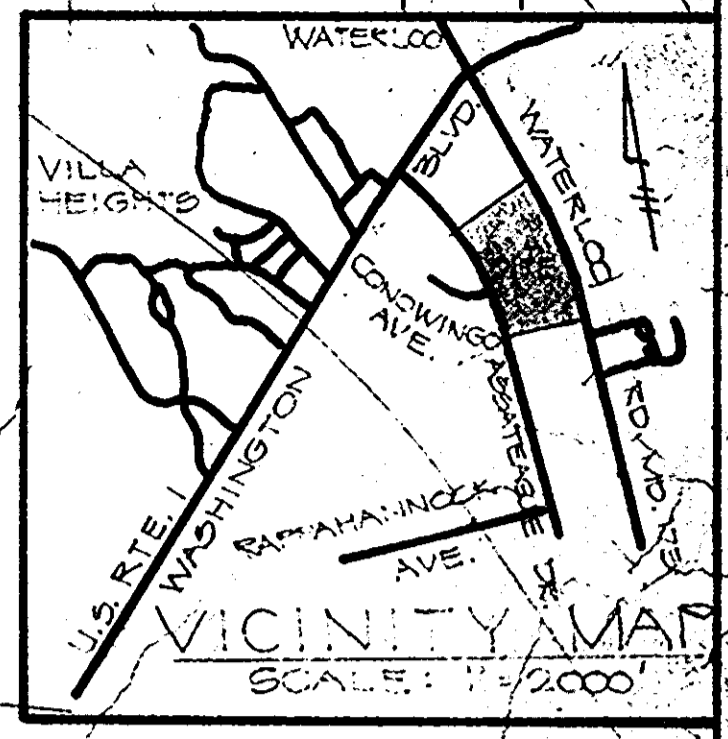


REVISIONS				
ISSUE	BY & DATE	DESCRIPTION	CHECK	APPROVED & DATE
JJB	12-6-76	REVISED STORM DRAINS, GRADING, BUILDING, CURBS & UTILITIES		
W.H.N.	1/3/77	REV. GRADING, SAN. G.O.'S & I-6	R.M.	1/3/77
	3/7/77	REV. PONDS AND NOTES		



- GENERAL NOTES:**
- AREA OF PARCEL: 10,000 ACRES
 - ZONING OF PROPERTY: M-2 BOARD OF APPEALS CASE - 896-C 11-29-76
 - DEED REFERENCE: PLAT NUMBER 3565
 - TAX MAP: 48 PARCEL 11 BLOCK: C
 - PARKING TABULATION:

	PARKING SPACES REQUIRED
MOTEL/RESTAURANT	
A. NO. OF EMPLOYEES: 124	144
B. TOTAL NO. OF HOTEL UNITS: 144	41
C. RETAIL SALES/RESTAURANT/BARBER SHOP: 4027 SQ. FT.	38
D. LOUNGE/BANQUET HALLS: CAPACITY 150 PERSONS	35
SERVICE FACILITY	
A. NO. OF EMPLOYEES: 10	35
B. COFFEE SHOP: CAPACITY 70	230
TOTAL PARKING SPACES REQUIRED	271
TOTAL PARKING SPACES PROVIDED	271
 - FLOOR SPACE TABULATION:

MOTEL:	RESTAURANT:
1ST FLOOR 8768	3RD FLOOR 7600
2ND FLOOR 7600	4TH FLOOR 7600
5TH FLOOR 7600	BASEMENT 15,176
TOTAL 42,536	TOTAL 24,376
 - GUTTERS, DOWNSPOUTS, RAINLEADERS, OR CONDUCTORS SHALL BE PROVIDED ON ALL BUILDINGS TO PROPERLY CONDUCT STORM WATER TO PLACE OF POSITIVE DISPOSAL. STORM WATER SHALL NOT DISCHARGE ACROSS FOOTWAYS, WALKWAYS OR PEDESTRIAN AREAS OR SO AS TO CREATE A NUISANCE
 - CARS SHALL USE TRUCK PARKING SPACES AS NEEDED

APPROVED FOR PUBLIC WATER AND PUBLIC SEWERAGE SYSTEM,
HOWARD COUNTY HEALTH DEPARTMENT.

Joyce M. Bond, MS
COUNTY HEALTH OFFICER
4-26-77
DATE

APPROVED: HOWARD COUNTY OFFICE OF PLANNING AND ZONING.

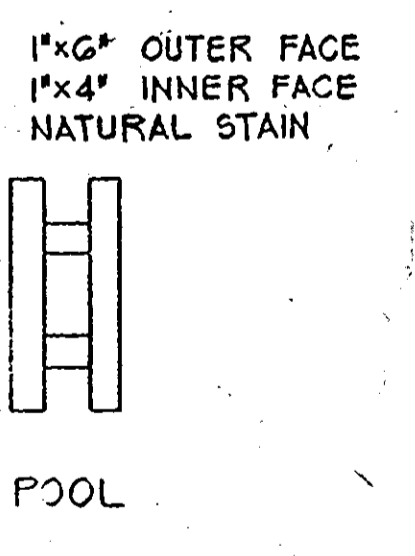
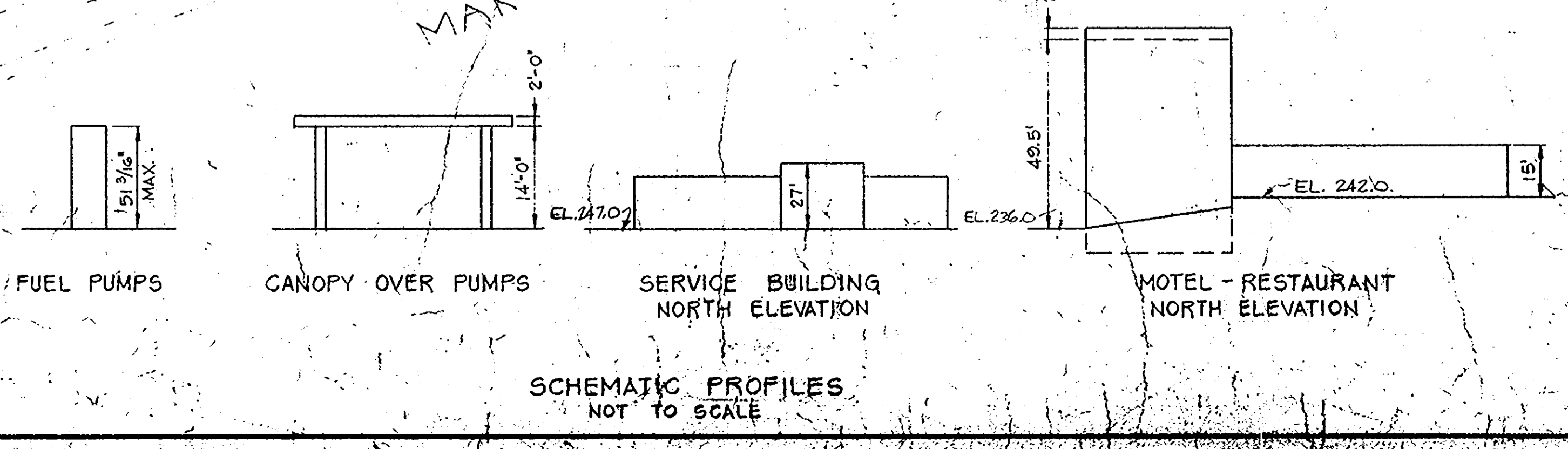
Thomas J. Hannah
PLANNING DIRECTOR
4-27-77
DATE

Richard M. Miskin
CHIEF, DIVISION OF LAND DEVELOPMENT
4-1-77
DATE

APPROVED: FOR PUBLIC WATER, PUBLIC SEWERAGE AND STORM
DRAINAGE SYSTEMS AND ROADS.

W. O. Lillard
DIRECTOR, DEPARTMENT OF PUBLIC WORKS
4-21-77
DATE

W. O. Lillard
CHIEF, BUREAU OF HIGHWAYS
4-21-77
DATE



APPROVED
PLANNING BOARD
OF HOWARD COUNTY
DATE 3-30-77

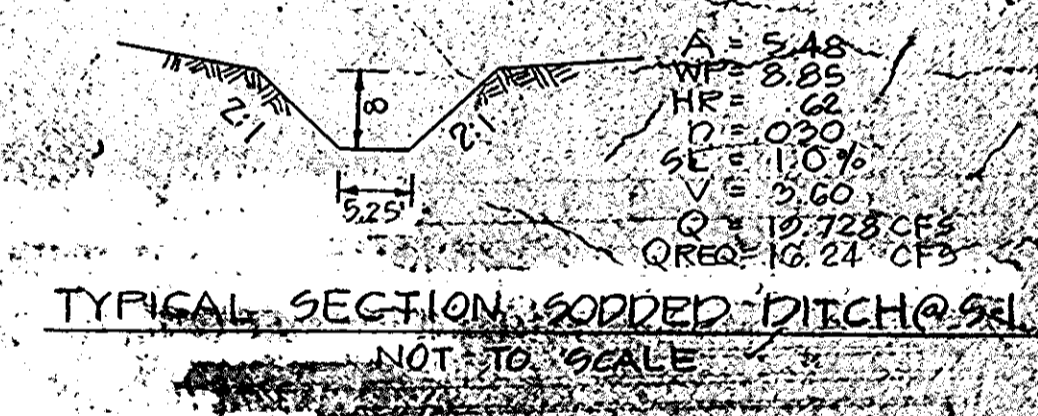
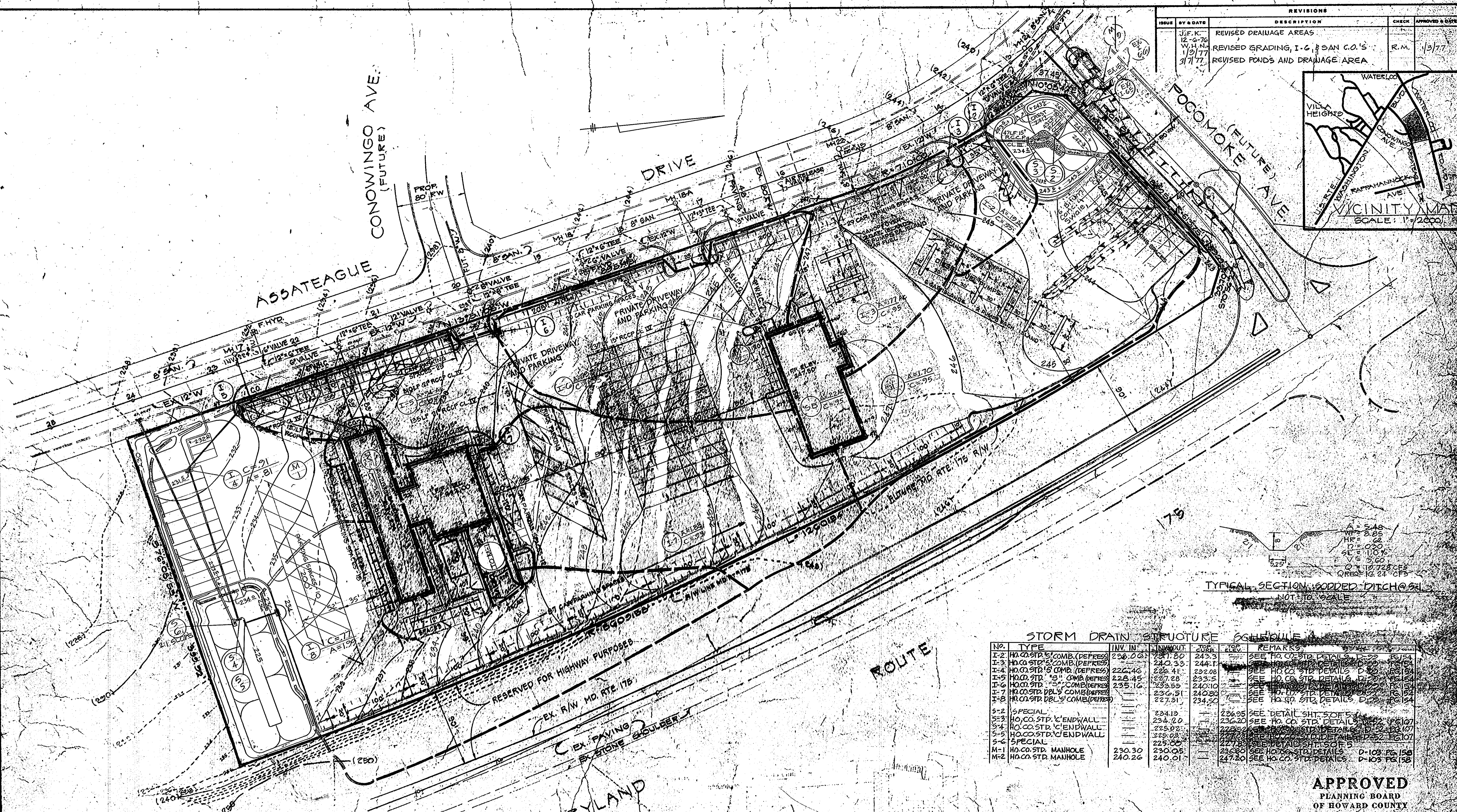
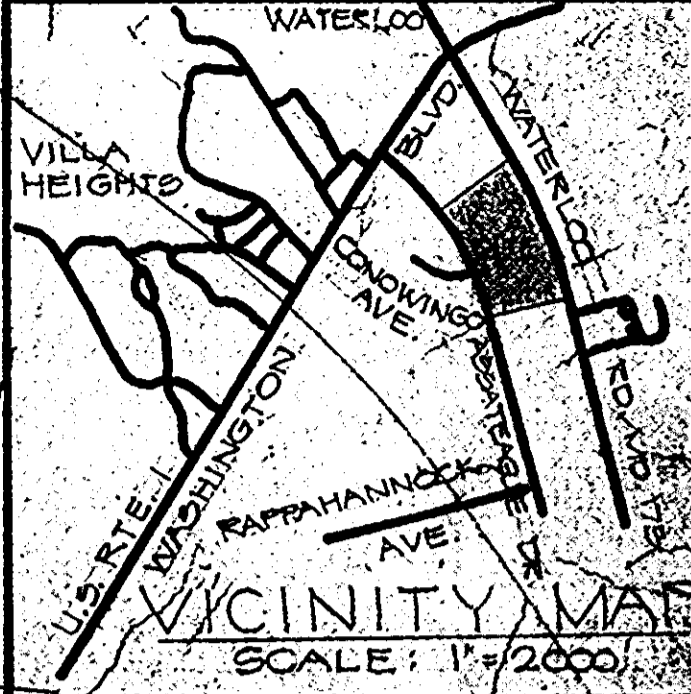
JWM

OWNER
MARYLAND WHOLESALE FOOD CENTER AUTHORITY
201 WEST FREESTON STREET
BALTIMORE, MARYLAND 21204

DEVELOPER
BORING & DAVIS ASSOCIATES
BOX 925
ELLCOTT CITY, MD 21049

TITLE: SITE PLAN			BOENDER ASSOCIATES INC. ENGINEERING PLANNING SURVEYING 3-31-77 BALTIMORE, MD 21202 WESTMINSTER, MD 21157
PROJECT: TRAVELERS INN, GREATER BALTO. CONSOLIDATED WHOLESALE FOOD MARKET, BLOCK 'C', PARCEL 'H'	LOCATION: GTH ELECTION DISTRICT, HOWARD CO., MD		
DATE: 6/26/76	DES. BY: B.A.L.S.	DRAWN BY: MS	CHECKED BY: R.M.M.
SCALE: 1/4" = 50'	JOB NO.: 76149A	DRWG. NO.: 1	OF 2

REVISIONS			
ISSUE	BY & DATE	DESCRIPTION	CHECK APPROVED & DATE
J.F.K.	12-6-76	REVISED DRAINAGE AREAS	
W.H.N.	1/2/77	REVISED GRADING, I-G, & SAN C.O.'S	R.M. 1/3/77
	3/7/77	REVISED PONDS AND DRAINAGE AREA	



STORM DRAIN STRUCTURE SCHEDULE

No.	TYPE	INV. IN	FIN. OUT.	20% CIP	REMARKS
I-2	HO. CO. STD. 18" COMB. (DEPRESS)	236.00	243.3		SEE HO. CO. STD. DETAILS, D-22, PG. 154
I-3	HO. CO. STD. 18" COMB. (DEPRESS)	240.33	244.1		SEE HO. CO. STD. DETAILS, D-22, PG. 154
I-4	HO. CO. STD. 18" COMB. (DEPRESS)	222.46	226.41		SEE HO. CO. STD. DETAILS, D-22, PG. 154
I-5	HO. CO. STD. 18" COMB. (DEPRESS)	227.28	233.5		SEE HO. CO. STD. DETAILS, D-22, PG. 154
I-6	HO. CO. STD. 18" COMB. (DEPRESS)	235.16	233.55	240.10	SEE HO. CO. STD. DETAILS, D-22, PG. 154
I-7	HO. CO. STD. 18" COMB. (DEPRESS)	236.51	240.83		SEE HO. CO. STD. DETAILS, D-22, PG. 154
I-8	HO. CO. STD. 18" COMB. (DEPRESS)	227.31	234.50		SEE HO. CO. STD. DETAILS, D-22, PG. 154
S-2	SPECIAL		234.19	224.95	SEE DETAIL SHIT. 5 OF 5
S-3	HO. CO. STD. C'ENDWALL		234.20	224.20	SEE HO. CO. STD. DETAILS, D-103, PG. 156
S-4	HO. CO. STD. C'ENDWALL		225.02	225.02	SEE HO. CO. STD. DETAILS, D-103, PG. 156
S-5	HO. CO. STD. C'ENDWALL		225.02	225.02	SEE HO. CO. STD. DETAILS, D-103, PG. 156
S-6	SPECIAL		225.02	225.02	SEE DETAIL SHIT. 5 OF 5
M-1	HO. CO. STD. MANHOLE	230.30	230.05	236.80	SEE HO. CO. STD. DETAILS, D-103, PG. 156
M-2	HO. CO. STD. MANHOLE	240.26	240.01	247.20	SEE HO. CO. STD. DETAILS, D-103, PG. 156

APPROVED FOR PUBLIC WATER AND PUBLIC SEWERAGE SYSTEM,
HOWARD COUNTY HEALTH DEPARTMENT.

Joyce M. Boyd MD 4-26-77
COUNTY HEALTH OFFICER DATE

APPROVED HOWARD COUNTY OFFICE OF PLANNING AND ZONING.

Thomas G. Harris Jr. 4-27-77
PLANNING DIRECTOR DATE

John W. Marshall 4-11-77
CHIEF, DIVISION OF LAND DEVELOPMENT DATE

APPROVED FOR PUBLIC WATER, PUBLIC SEWERAGE AND STORM
DRAINAGE SYSTEMS AND ROADS.

Ed. P. ... 4-21-77
DIRECTOR, DEPARTMENT OF PUBLIC WORKS DATE

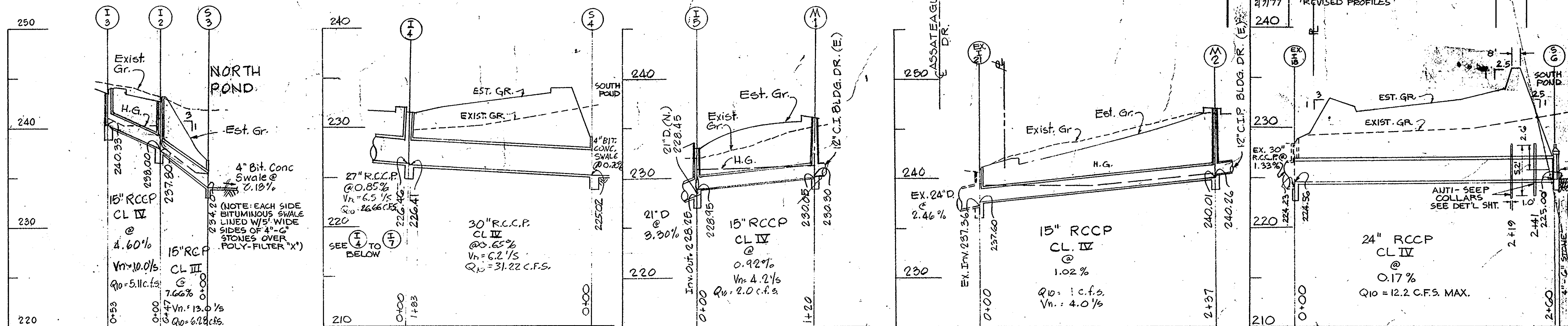
W.O. ... 4-21-77
CHIEF, BUREAU OF HIGHWAYS DATE

APPROVED
PLANNING BOARD
OF HOWARD COUNTY
DATE 3-30-77
JWM

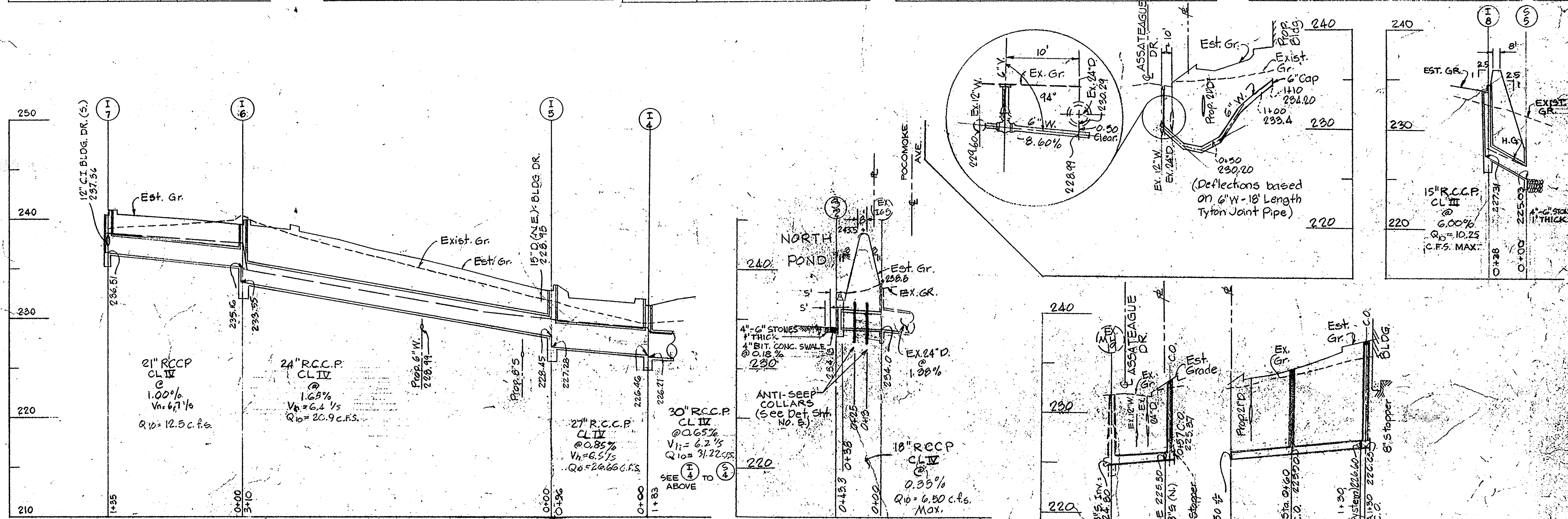
OWNER
MARYLAND WHOLESALE FOOD CENTER AUTHORITY
201 WEST FREIGHTON STREET
BALTIMORE, MARYLAND 21201

DEVELOPER
BORING & DAVIS ASSOCIATES
1001 ...
BETHESDA, MD 20814

TITLE DRAINAGE AREA MAP			BOENDER ASSOCIATES, INC. ENGINEERING PLANNING SURVEYING 1001 ... BETHESDA, MD 20814
PROJECT TRAVELERS ...	DATE 4/27/77		
LOCATION GITH ELECTRON DISTRICT, HOWARD CO., MD	DESIGNED BY J.F.K.	DRAWN BY M.S.	CHECKED BY R.M.
SCALE 1"=200'	JOB NO. 2761-23	DATE 4/27/77	DATE 4/27/77



ISSUE	BY & DATE	DESCRIPTION	CHECK	APPROVED & DATE
240	W.H.N. 1/3/77 2/7/77	Revised 8's. From 2.0% to 1.00% & Placement of C.O.'s, REVISED PROFILES	R.M.	1/3/77



APPROVED: FOR PUBLIC WATER AND PUBLIC SEWERAGE SYSTEM
HOWARD COUNTY HEALTH DEPARTMENT

James M. Brock
COUNTY HEALTH OFFICER

DATE: 4-26-77

APPROVED: HOWARD COUNTY OFFICE OF PLANNING AND ZONING

James A. Harris
PLANNING DIRECTOR

DATE: 4-27-77

CHIEF, DIVISION OF LAND DEVELOPMENT

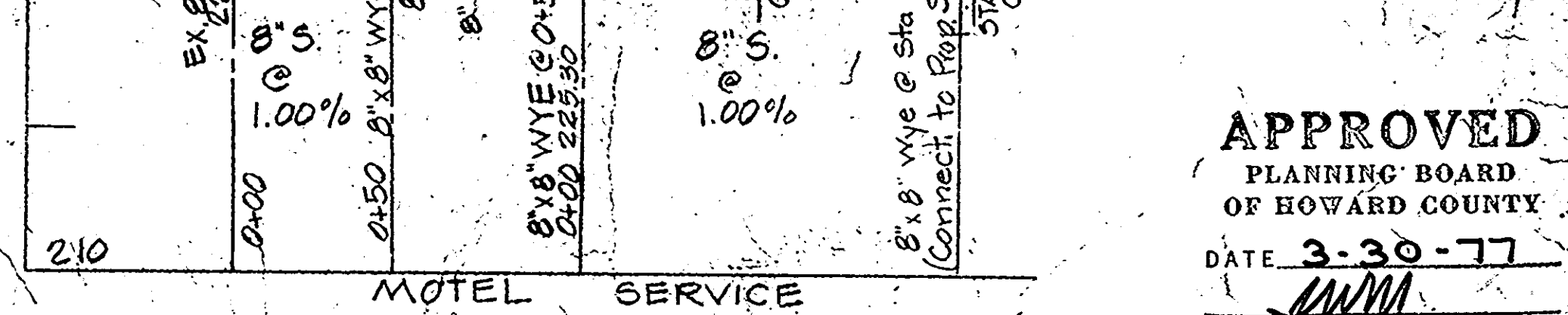
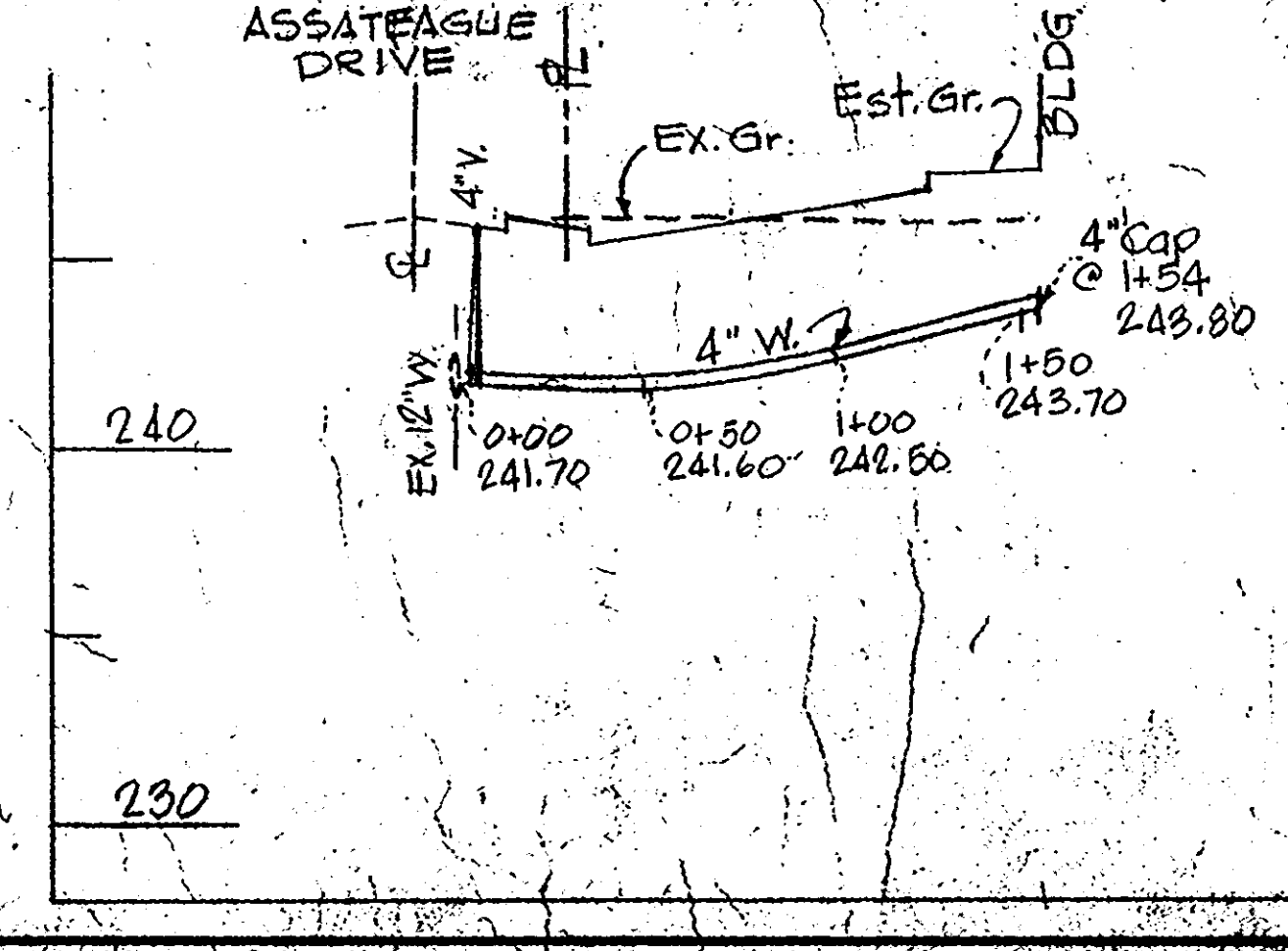
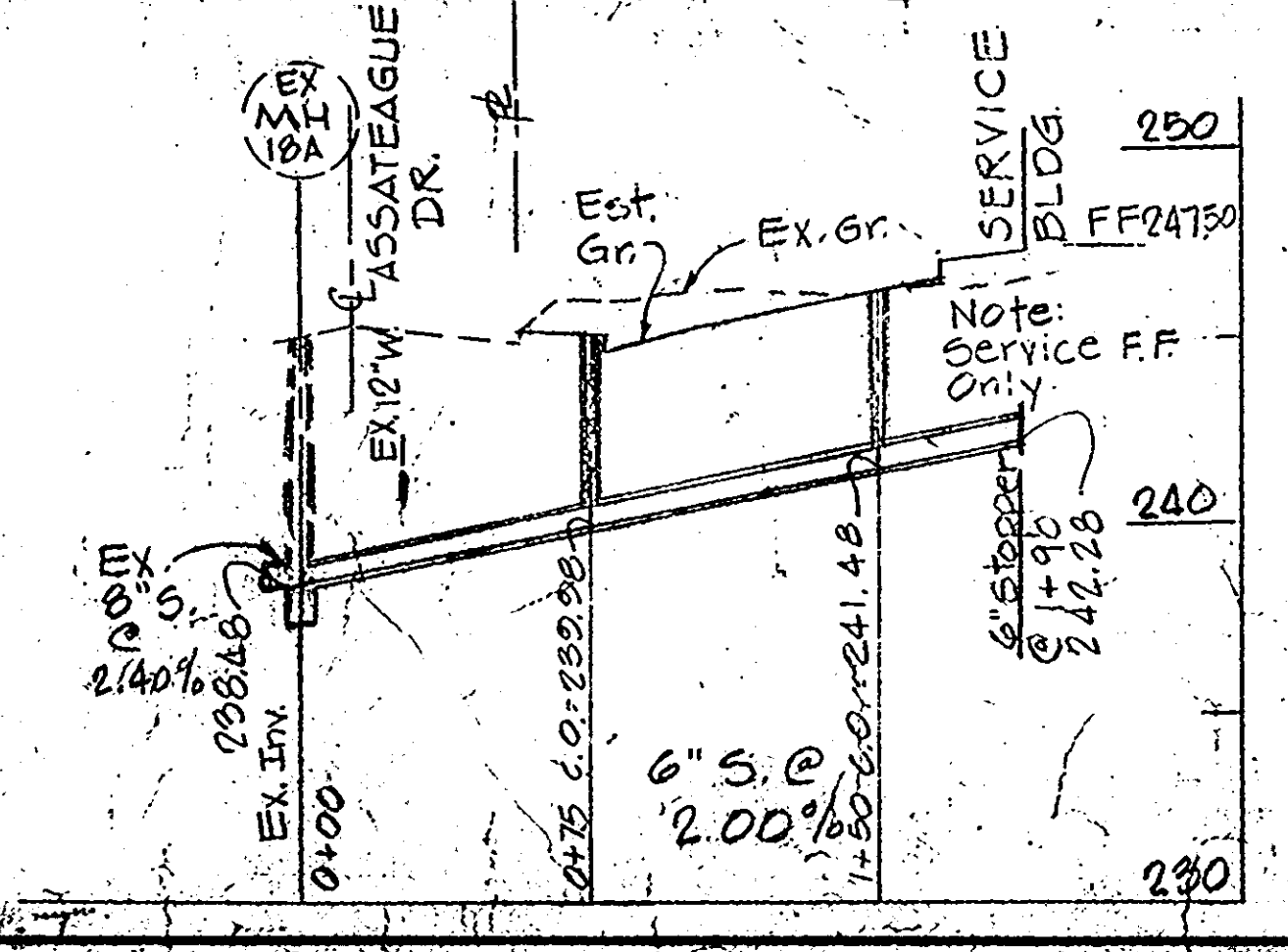
John W. Mason
DATE: 4-11-77

APPROVED: FOR PUBLIC WATER, PUBLIC SEWERAGE AND STORM DRAINAGE SYSTEMS AND ROADS

W. O. Talbot
DIRECTOR, DEPARTMENT OF PUBLIC WORKS

DATE: 4-21-77

CHIEF, BUREAU OF HIGHWAYS



APPROVED
PLANNING BOARD OF HOWARD COUNTY
DATE: 3-30-77

PROFILES
STORM DRAIN, WATER, SEWER

TITLE: STORM DRAIN, WATER, SEWER

PROJECT: TRAVELERS INN / GREATER BALTO. CONSOLIDATED WHOLESALE FOOD MARKET / BLOCK 'C' PARCEL 'H'

LOCATION: 6TH ELECTION DISTRICT, HOWARD CO., MD.

DATE: 12/6/76. DES. BY: W.N. DRAWN BY: W.N. CHD. BY: R.M. DATE: 3-31-77

SCALE: 1" = 50'. JOB NO.: 72143. DRWG. NO.: 3 OF 5.

STATE OF MARYLAND PROFESSIONAL ENGINEER

ENGINEERING PLANNING SURVEYING BY: **BOENDER ASSOCIATES INC.**

BOENDER ASSOCIATES INC. 1777 WESTMINSTER, MD. 21157

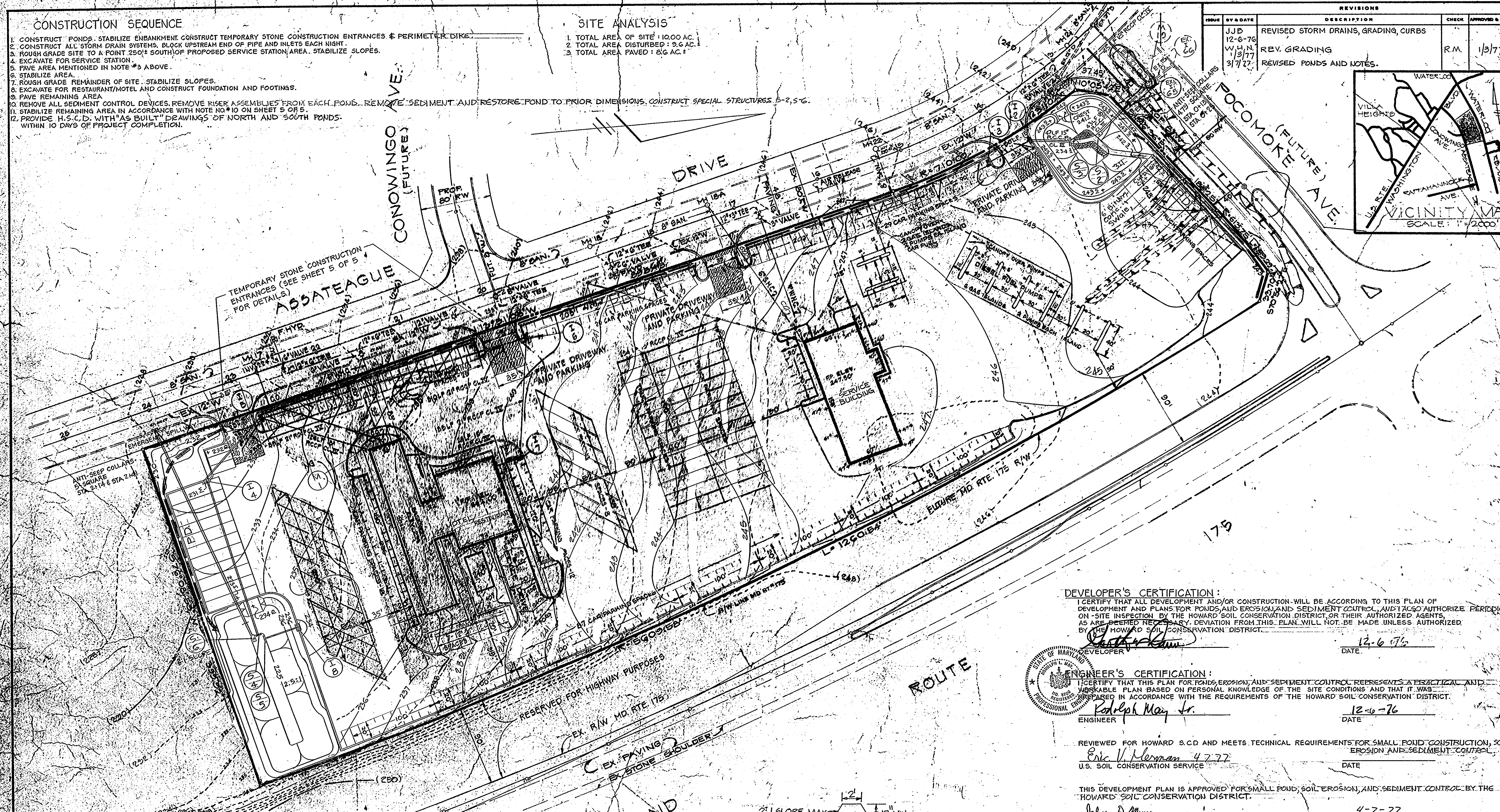
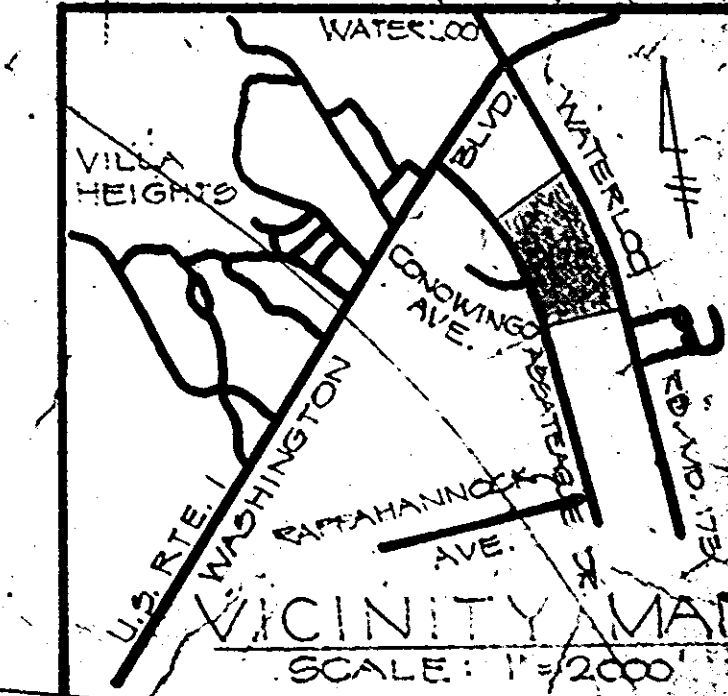
CONSTRUCTION SEQUENCE

1. CONSTRUCT PONDS, STABILIZE ENBANKMENT, CONSTRUCT TEMPORARY STONE CONSTRUCTION ENTRANCES & PERIMETER DIKE.
2. CONSTRUCT ALL STORM DRAIN SYSTEMS, BLOCK UPSTREAM END OF PIPE AND INLETS EACH NIGHT.
3. ROUGH GRADE SITE TO A POINT 250' SOUTH OF PROPOSED SERVICE STATION AREA, STABILIZE SLOPES.
4. EXCAVATE FOR SERVICE STATION.
5. PAVE AREA MENTIONED IN NOTE #3 ABOVE.
6. STABILIZE AREA.
7. ROUGH GRADE REMAINDER OF SITE, STABILIZE SLOPES.
8. EXCAVATE FOR RESTAURANT/MOTEL AND CONSTRUCT FOUNDATION AND FOOTINGS.
9. PAVE REMAINING AREA.
10. REMOVE ALL SEDIMENT CONTROL DEVICES, REMOVE RISER ASSEMBLIES FROM EACH POND, REMOVE SEDIMENT AND RESTORE POND TO PRIOR DIMENSIONS, CONSTRUCT SPECIAL STRUCTURES B-2, 5, 6.
11. STABILIZE REMAINING AREA IN ACCORDANCE WITH NOTE #10 ON SHEET 5 OF 5.
12. PROVIDE H.S.C.D. WITH "AS BUILT" DRAWINGS OF NORTH AND SOUTH PONDS, WITHIN 10 DAYS OF PROJECT COMPLETION.

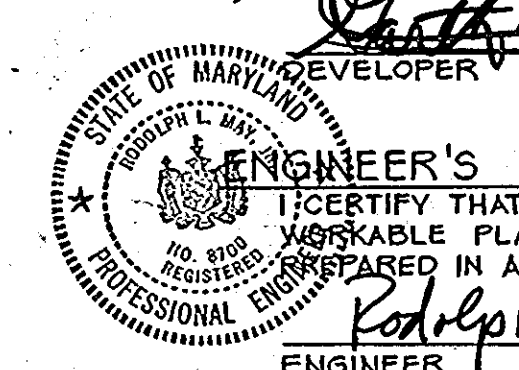
SITE ANALYSIS

1. TOTAL AREA OF SITE: 10.00 AC.
2. TOTAL AREA DISTURBED: 9.6 AC.
3. TOTAL AREA PAVED: 8.6 AC.

ISSUE	BY & DATE	DESCRIPTION	CHECK	APPROVED & DATE
JJD	12-6-76	REVISED STORM DRAINS, GRADING, CURBS		
W.H.N.	1/3/77	REV. GRADING	R.M.	1/3/77
	3/7/77	REVISED PONDS AND NOTES.		



DEVELOPER'S CERTIFICATION:
 I CERTIFY THAT ALL DEVELOPMENT AND/OR CONSTRUCTION WILL BE ACCORDING TO THIS PLAN OF DEVELOPMENT AND PLANS FOR PONDS, EROSION, AND SEDIMENT CONTROL, AND I ALSO AUTHORIZE PERIODIC ON-SITE INSPECTION BY THE HOWARD SOIL CONSERVATION DISTRICT OR THEIR AUTHORIZED AGENTS, AS ARE DEEMED NECESSARY. DEVIATION FROM THIS PLAN WILL NOT BE MADE UNLESS AUTHORIZED BY THE HOWARD SOIL CONSERVATION DISTRICT.



ENGINEER'S CERTIFICATION:
 I CERTIFY THAT THIS PLAN FOR PONDS, EROSION, AND SEDIMENT CONTROL REPRESENTS A PRACTICAL AND WORKABLE PLAN BASED ON PERSONAL KNOWLEDGE OF THE SITE CONDITIONS AND THAT IT WAS PREPARED IN ACCORDANCE WITH THE REQUIREMENTS OF THE HOWARD SOIL CONSERVATION DISTRICT.

REVIEWED FOR HOWARD S.C.D. AND MEETS TECHNICAL REQUIREMENTS FOR SMALL POND CONSTRUCTION, SOIL EROSION AND SEDIMENT CONTROL.

THIS DEVELOPMENT PLAN IS APPROVED FOR SMALL POND, SOIL EROSION, AND SEDIMENT CONTROL BY THE HOWARD SOIL CONSERVATION DISTRICT.

APPROVED
 PLANNING BOARD
 OF HOWARD COUNTY
 DATE 3-30-77

OWNER: MARYLAND WHOLESALE FOOD CENTER AUTHORITY
 201 WEST FREDSON STREET
 BALTIMORE, MARYLAND 21204

DEVELOPER: BORING & DAVIS ASSOCIATES
 BOX 22B
 ELLICOTT CITY, MD 21045

APPROVED FOR PUBLIC WATER AND PUBLIC SEWERAGE SYSTEM,
 HOWARD COUNTY HEALTH DEPARTMENT.

Joyce M. Boed
 COUNTY HEALTH OFFICER
 DATE 4-26-77

APPROVED HOWARD COUNTY OFFICE OF PLANNING AND ZONING.

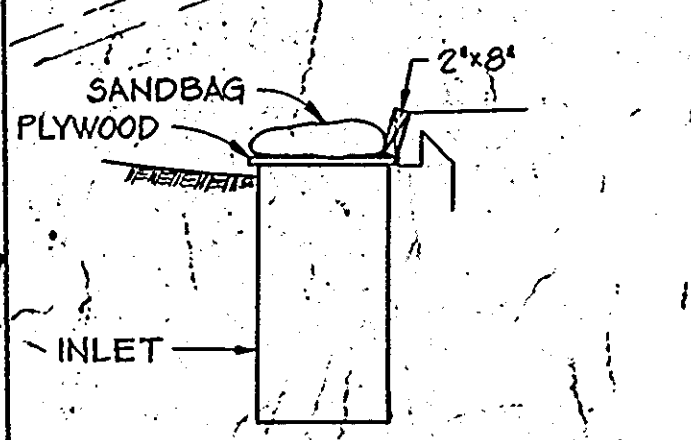
D. L. Harris
 PLANNING DIRECTOR
 DATE 4-27-77

John W. Muschman
 CHIEF, DIVISION OF LAND DEVELOPMENT
 DATE 4-11-77

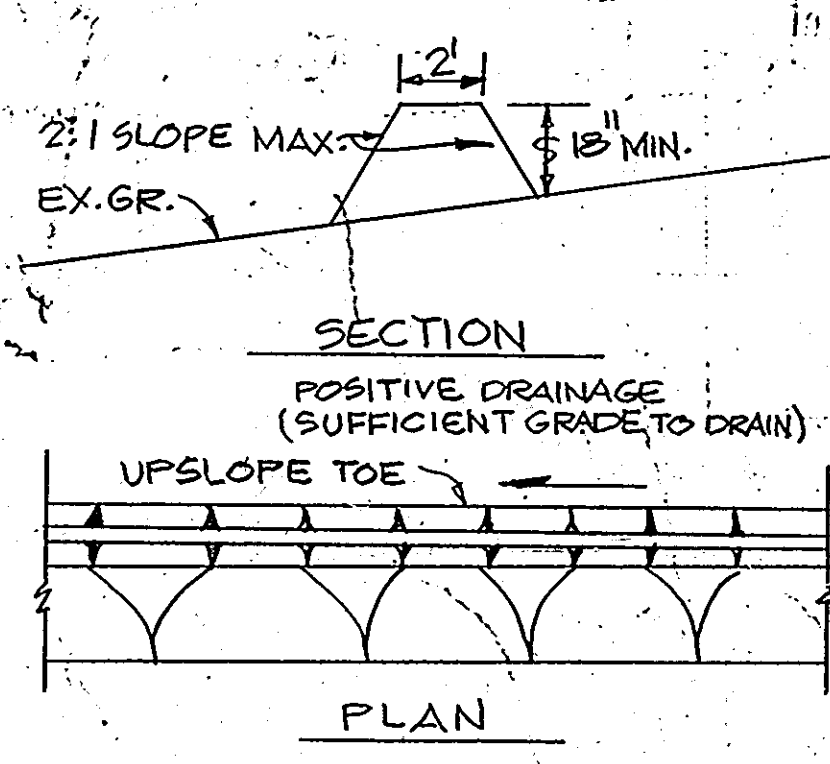
APPROVED FOR PUBLIC WATER, PUBLIC SEWERAGE AND STORM DRAINAGE SYSTEMS AND ROADS.

D. Pagan
 DIRECTOR, DEPARTMENT OF PUBLIC WORKS
 DATE 4-21-77

W. O. Lambert
 CHIEF, BUREAU OF HIGHWAYS
 DATE 4-21-77



NOTE: ALL INLETS TO BE CAPPED WITH FLYWOOD & SANDBAGS AT THE END OF EACH WORKING DAY.

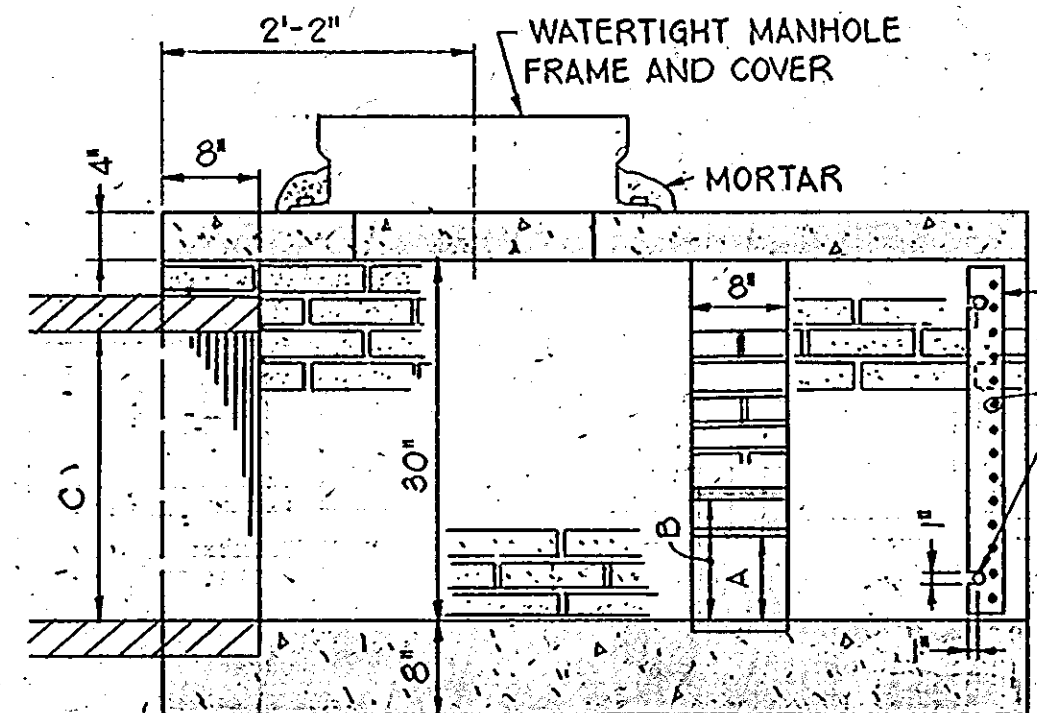


STD. SYMBOL = PD

TITLE: SEDIMENT CONTROL PLAN		STATE OF MARYLAND PROFESSIONAL ENGINEER SEAL FOR Rodolph May Jr.	ENGINEERING PLANNING SURVEYING BY BOENDER ASSOCIATES INC. BALTIMORE, MD. 405-7777 SALESBURY, MD. 746-1258 WESTMINSTER, MD. 845-5588
PROJECT: TRAVELERS INN GREATER BALTO. CONSOLIDATED WHOLESALE FOOD MARKET BLOCK 'C' PARCEL 'H'	LOCATION: 6TH ELECTION DISTRICT HOWARD CO., MD.		
DATE: 8/26/76	DES. BY: TBLLS	DRAWN BY: MS	CHECKED BY:
SCALE: 1/4" = 50'	JOB NO.: 76142	DRWS. NO.: 4 OF 5	

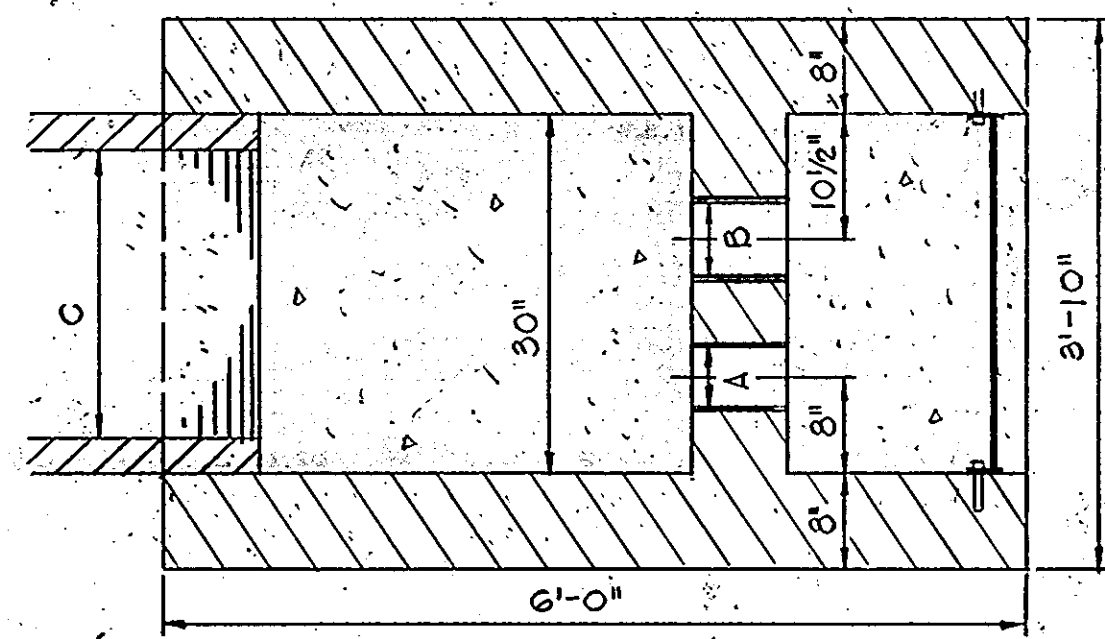
SEDIMENT CONTROL NOTES

- 1) WILL BE GIVEN 24 HRS. NOTICE PRIOR TO ANY GRADING.
- 2) ALL SEDIMENT CONTROL STRUCTURES SHOWN ON THIS PLAN, UNLESS OTHERWISE SPECIFIED, WILL BE INSTALLED AND STABILIZED IN ACCORDANCE WITH NOTE #9 PRIOR TO ANY GRADING OR EARTH DISTURBANCE ON THIS SITE.
- 3) AS SOON AS ROUGH GRADING IS COMPLETED, AREA TO BE PAVED WILL BE STABILIZED WITH BASE MATERIAL.
- 4) ALL CUT AND FILL SLOPES WILL BE A MAXIMUM OF 2:1.
- 5) FOLLOWING THE STABILIZATION OF ALL AREAS, UPGRADE THE AREA OF THE SEDIMENT CONTROL. MEASURES MAY BE REMOVED AND GRADED TO THE FINAL GRADES PLANNED AND STABILIZED IMMEDIATELY.
- 6) ELEVATIONS MARKED THIS (X) ARE FINISHED GRADES.
- 7) IN THE EVENT OF EXCESS OF MATERIAL, THE WASTE WILL BE STOCKPILED WITH A MAXIMUM 2:1 SLOPE ON AN AREA WHICH HAS BEEN CLEARED ON THE SITE. STOCKPILED MATERIAL WILL BE STABILIZED IN ACCORDANCE WITH NOTE #9.
- 8) SEDIMENT CONTROL MEASURES WILL NOT BE REMOVED UNTIL APPROVAL IS OBTAINED FROM THE H.S.C.D.
- 9) TEMPORARY STABILIZATION: APPLY: 2000 LBS./AC. OF 46 LBS./1000 SQ.FT. OF PULVERIZED DOLOMITIC LIMESTONE TO RYEGRASS @ 40 LBS./AC.
- 10) PERMANENT STABILIZATION: APPLY: 2000 LBS./AC. OF PULVERIZED DOLOMITIC LIMESTONE TO RYEGRASS @ 40 LBS./AC.
- 11) SEED: 700 LBS./AC. OF 0-20-0 SUPER PHOSPHATE
1000 LBS./AC. OF 10-10-10 FERTILIZER
25 LBS./AC. OF KENTUCKY 31 TALL FESCUE
25 LBS./AC. OF KENTUCKY BLUE GRASS
25 LBS./AC. OF ANNUAL RYE GRASS
NOTE: SEEDS MAY BE DONE BETWEEN MARCH 1-MAY 1, OR AUG. 1-OCT. 1 ONLY.
MULCH: 2 TONS/AC. OF UNWEATHERED WHEATSTRAW, TIE MULCH DOWN WITH 250 GAL./AC. OF LIQUID ASPHALT.
- 12) PERMANENT STABILIZATION FOR SLOPES STEEPER THAN 3:1 TREATMENT WILL BE SAME AS NOTE 10 EXCEPT OF 40% OF KENTUCKY 31 TALL FESCUE/AC. AND 15% OF CROWN VETCH (INNOCULATED & SCARIFIED) WILL BE USED.

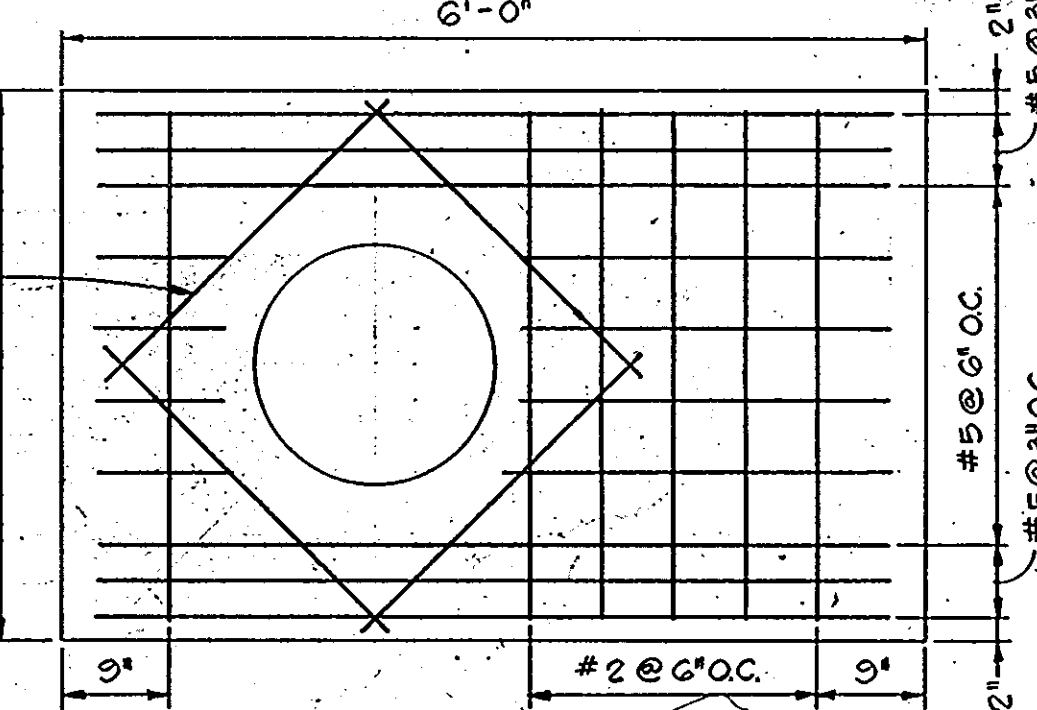


PIPE AND ORIFICE SCHEDULE

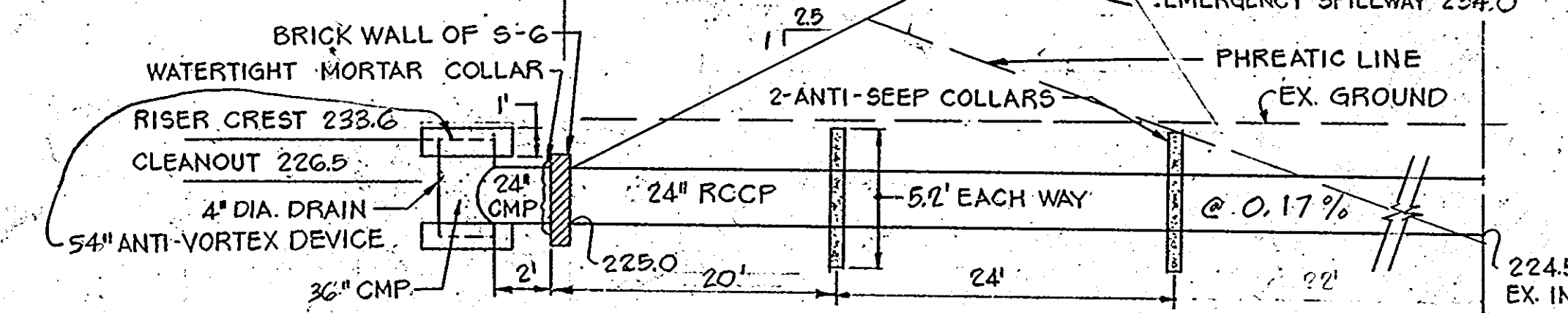
PIPE	S-2	S-6
A	6"	6"
B	8"	10"
C	18"	24"
INV.	234.13	225.00



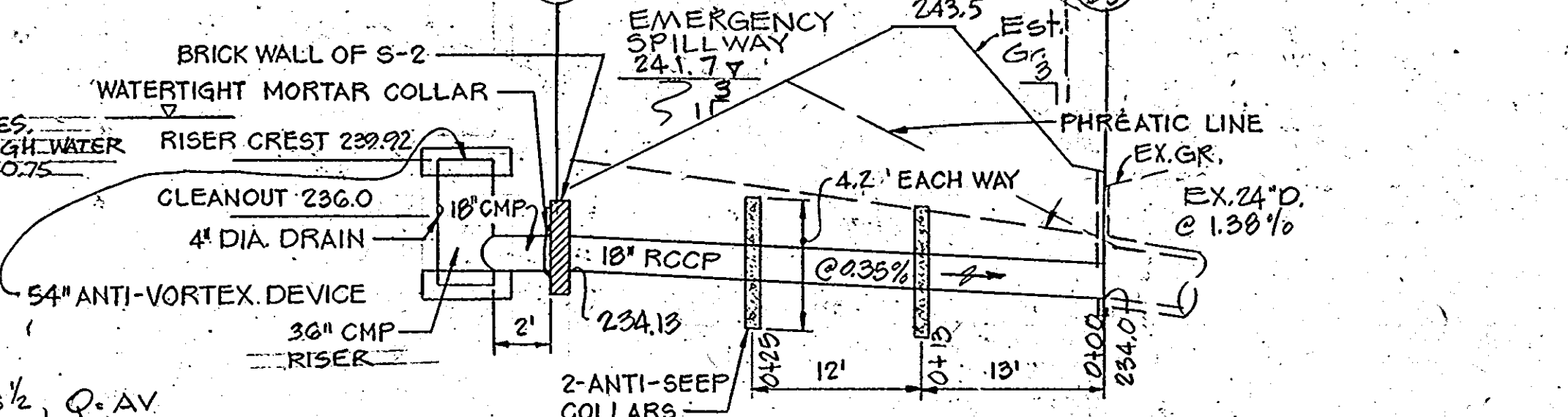
PLAN BELOW SLAB
SLAB
5-6/5-2
POND OUTLET STRUCTURE
SCALE: 3/4" = 1'-0"



SLAB
SCALE: 3/4" = 1'-0"



RISER DETAIL - SOUTH POND
NOT TO SCALE



RISER DETAIL - NORTH POND
NOT TO SCALE

DEVELOPER'S CERTIFICATION:
I CERTIFY THAT ALL DEVELOPMENT AND/OR CONSTRUCTION WILL BE ACCORDING TO THIS PLAN FOR PONDS, EROSION AND SEDIMENT CONTROL, AND I ALSO AUTHORIZE PERIODIC ON-SITE INSPECTION BY THE HOWARD SOIL CONSERVATION DISTRICT OR THEIR AUTHORIZED AGENTS, AS ARE DEEMED NECESSARY. DEVIATION FROM THIS PLAN WILL NOT BE MADE UNLESS AUTHORIZED BY THE HOWARD SOIL CONSERVATION DISTRICT.

Garth V. Davis
DEVELOPER
9/2/74
DATE

ENGINEER'S CERTIFICATION:
I CERTIFY THAT THIS PLAN FOR PONDS, EROSION AND SEDIMENT CONTROL REPRESENTS A PRACTICAL AND WORKABLE PLAN BASED ON MY PERSONAL KNOWLEDGE OF THE SITE CONDITIONS AND THAT IT WAS PREPARED IN ACCORDANCE WITH THE REQUIREMENTS OF THE HOWARD SOIL CONSERVATION DISTRICT.

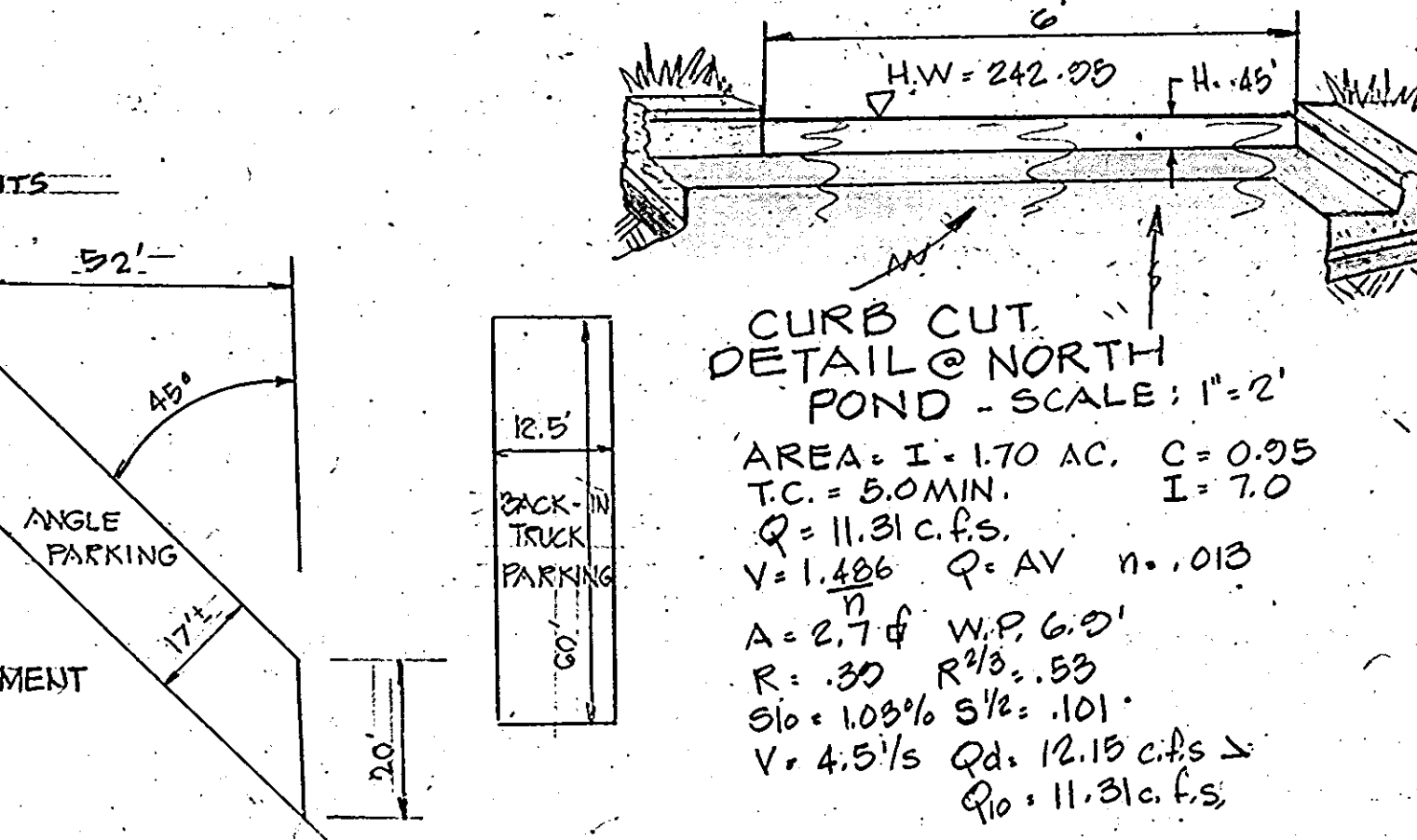
Richard May Jr.
ENGINEER
12-1-76
DATE

REVIEWED FOR HOWARD S.C.D. AND MEETS TECHNICAL REQUIREMENTS FOR SMALL POND CONSTRUCTION, SOIL EROSION, AND SEDIMENT CONTROL.

Eric V. Herman 4777
U.S. SOIL CONSERVATION SERVICE
DATE

THIS DEVELOPMENT PLAN IS APPROVED FOR SMALL POND, SOIL EROSION, AND SEDIMENT CONTROL BY THE HOWARD SOIL CONSERVATION DISTRICT.

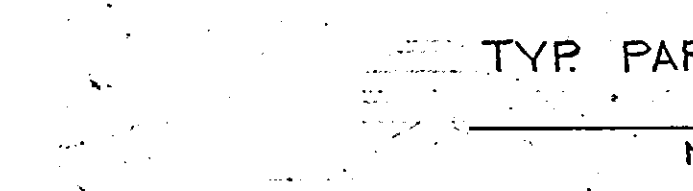
John D. Myers
HOWARD SOIL CONSERVATION DISTRICT
4-7-77
DATE



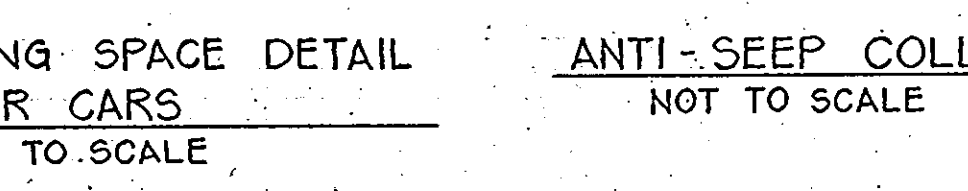
CURB CUT DETAIL @ NORTH POND - SCALE: 1" = 2'
AREA = 1.170 AC. C = 0.95
T.C. = 5.0 MIN. I = 7.0
Q = 11.31 c.f.s.
V = 1.486 Q/A V = 11.013
A = 2.7 ft W.P. 6.0'
R = 30 R^2 = .53
S10 = 1.05% S^1/2 = .101
V = 4.5/5 Qd = 12.15 c.f.s.
Q10 = 11.31 c.f.s.



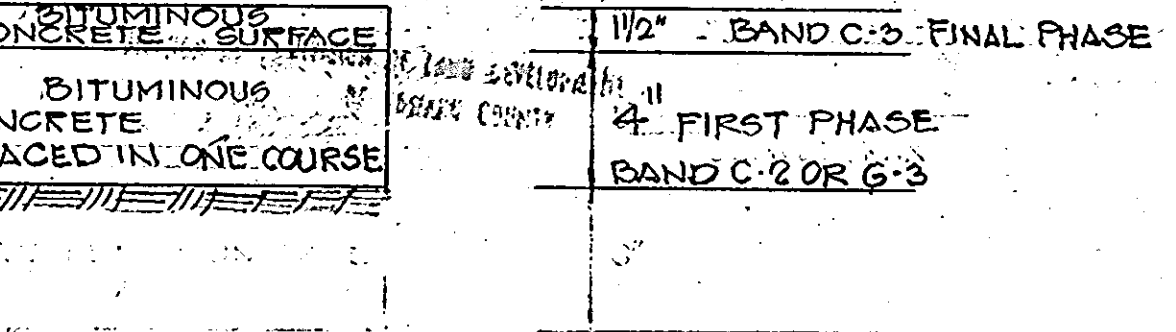
TYP. PARKING SPACE DETAILS FOR DIESEL TRUCKS
NOT TO SCALE



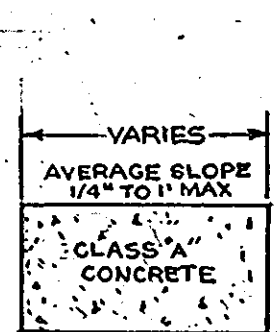
TYP. PARKING SPACE DETAIL FOR CARS
NOT TO SCALE



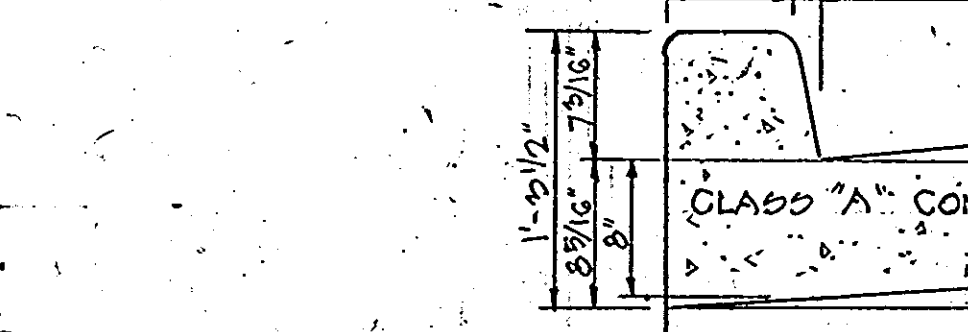
ANTI-SEEP COLLAR
NOT TO SCALE



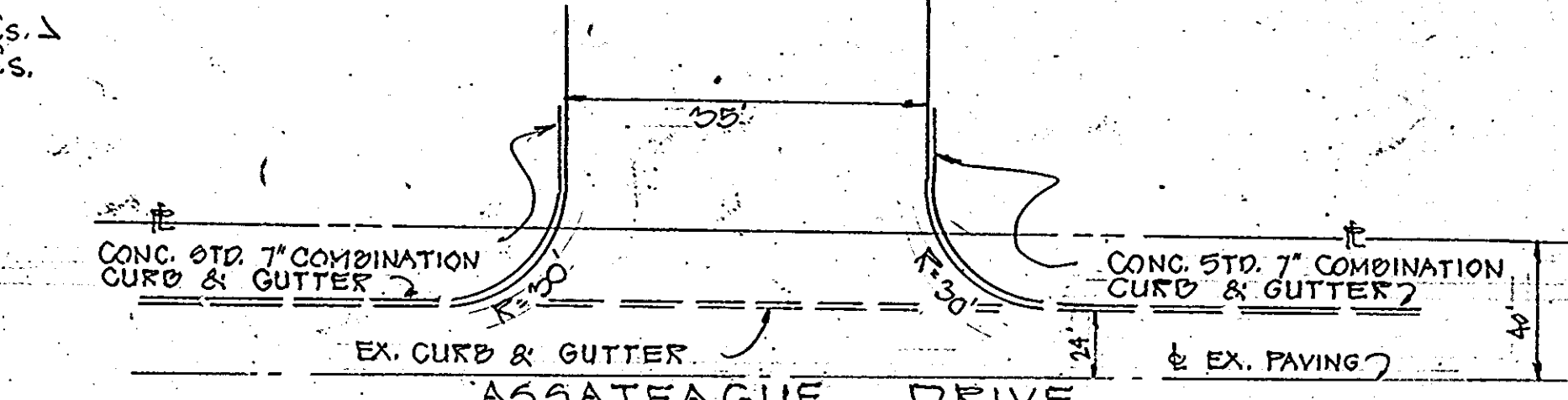
TYPICAL ON-SITE PAVING SECTION
NOT TO SCALE



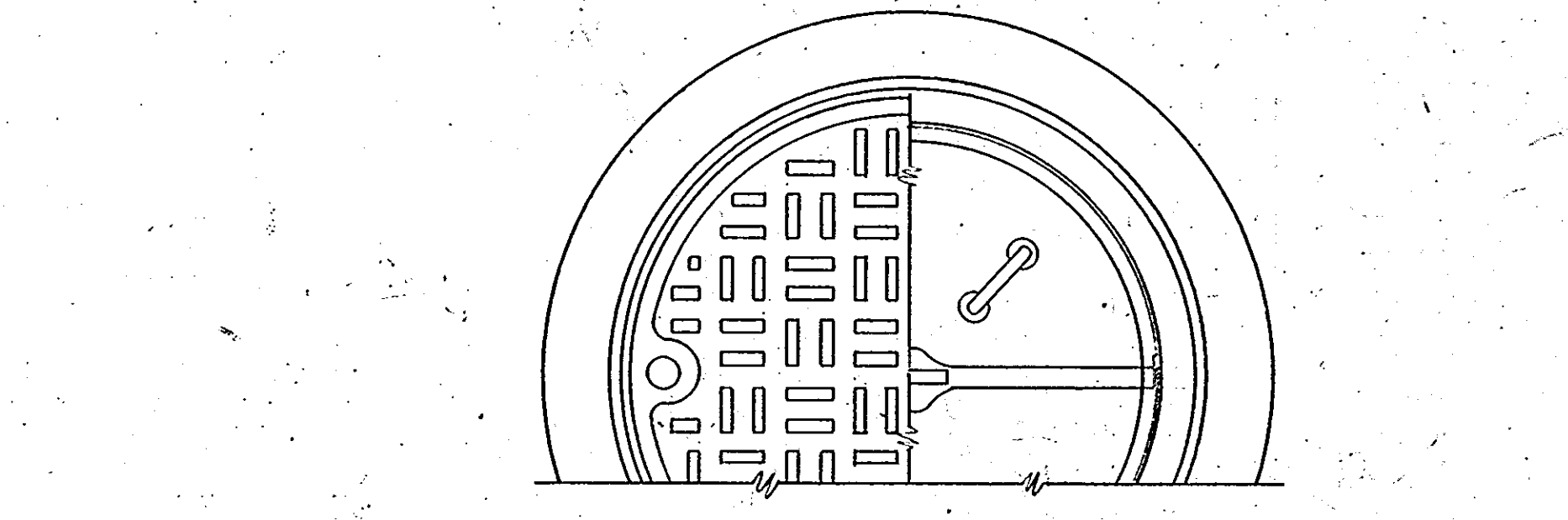
TYPICAL SIDEWALK SECTION
NOT TO SCALE



ST'D. 7" COMBINATION CURB & GUTTER
NO. SCALE



STANDARD ENTRANCE DETAIL
NOT TO SCALE



WATERTIGHT MANHOLE (RCR-61) FRAME AND COVER
NOT TO SCALE

APPROVED: FOR PUBLIC WATER AND PUBLIC SEWERAGE SYSTEMS, HOWARD COUNTY HEALTH DEPARTMENT.

James M. Boyd 4-26-77
COUNTY HEALTH OFFICER
DATE

APPROVED: HOWARD COUNTY OFFICE OF PLANNING AND ZONING

Thomas A. Harris Jr. 4-27-77
PLANNING DIRECTOR
DATE

John W. Muehlman 4-11-77
CHIEF, DIVISION OF LAND DEVELOPMENT
DATE

APPROVED: FOR PUBLIC WATER, PUBLIC SEWERAGE AND STORM DRAINAGE SYSTEMS AND ROADS.

W. O. Lambert 4-21-77
DIRECTOR OF PUBLIC WORKS
DATE

TO BE CONSTRUCTED IN ACCORDANCE WITH THE SOIL AND FOUNDATION INVESTIGATION FOR TRUCKERS INN BY ATEC ASSOCIATES, OCTOBER, 1976.

TYPICAL ON-SITE PAVING SECTION

TO BE CONSTRUCTED IN ACCORDANCE WITH THE HOWARD COUNTY ROAD CONSTRUCTION CODE SPECIFICATIONS.

TYPICAL SIDEWALK SECTION

APPROVED PLANNING BOARD OF HOWARD COUNTY
DATE 3-30-77
JMM

TITLE: DETAIL SHEET

PROJECT: TRAVELER'S INN
GREATER BALTO. CONSOLIDATED WHOLESALE FOOD MARKET BLOCK 'C' PARCEL 'H'

LOCATION: 6TH ELECTION DISTRICT HOWARD CO., MD.

DATE: 8/30/76 DES. BY: - DRAWN BY: TD CHKD. BY: -

SCALE: AS SHOWN JOB NO. 76140 DRWG. NO. 5 OF 5

ENGINEERING PLANNING SURVEYING BY: BOENDER ASSOCIATES INC.
BALTIMORE, MD. 465-7777
SALISBURY, MD. 749-1266
WESTMINSTER, MD. 848-5588