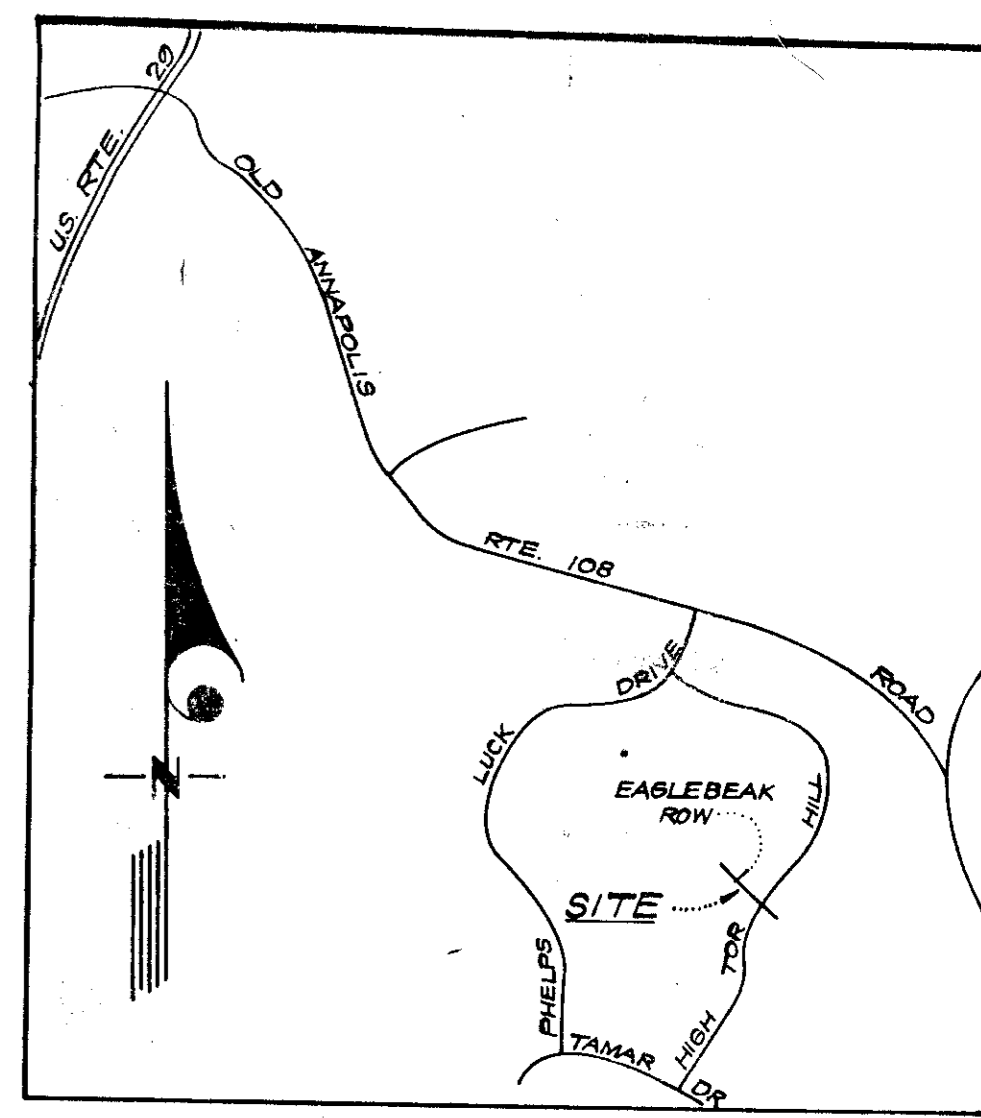


NOTE: Use Residential Driveway Entrance, Howard Co. Drawing #D-34, Pg. 89, Except Where Driveway Abuts Modified Combination Curb & Gutter. All materials and construction shall be in accordance with Howard County Road Construction Code.

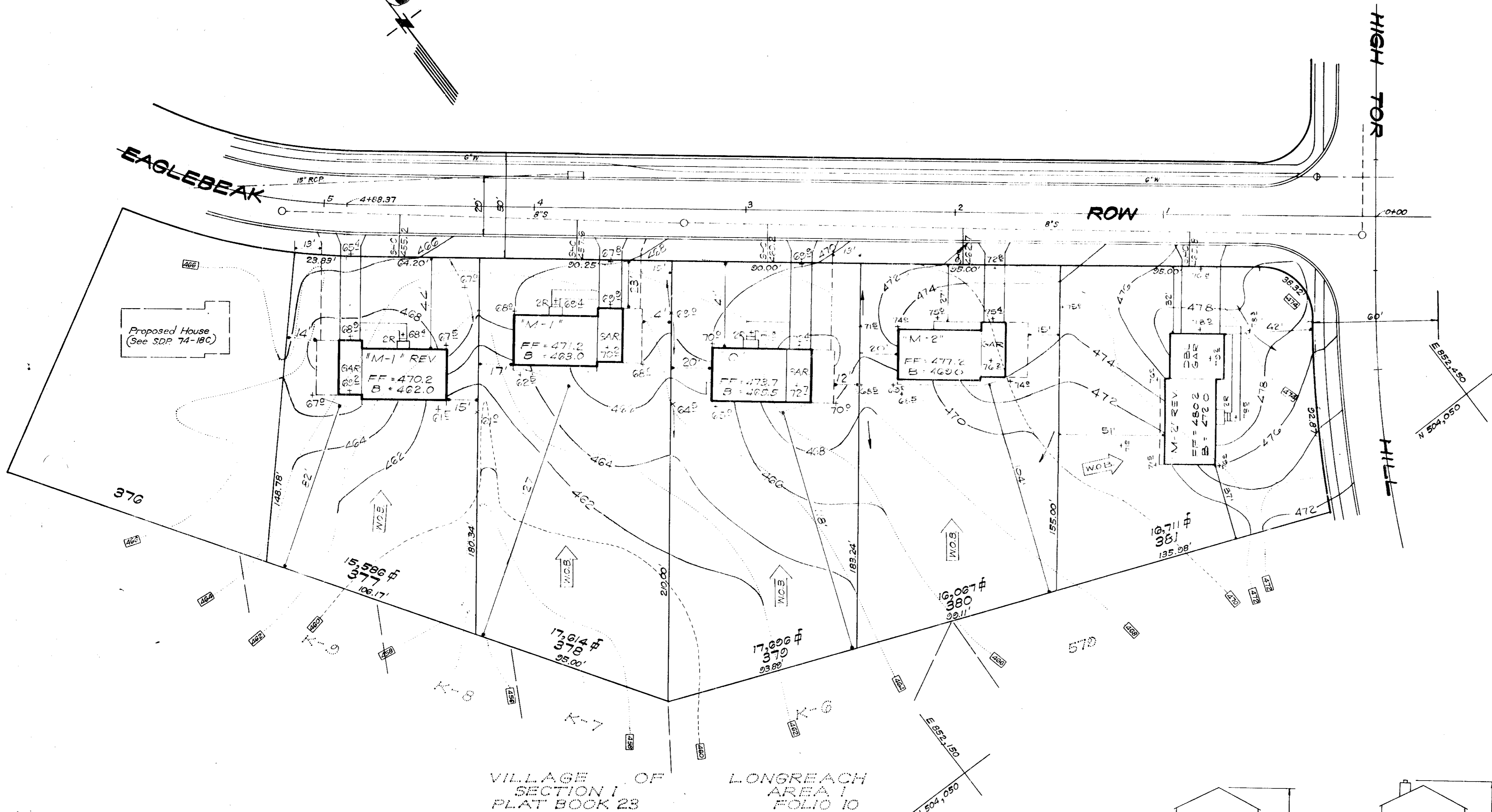


LEGEND

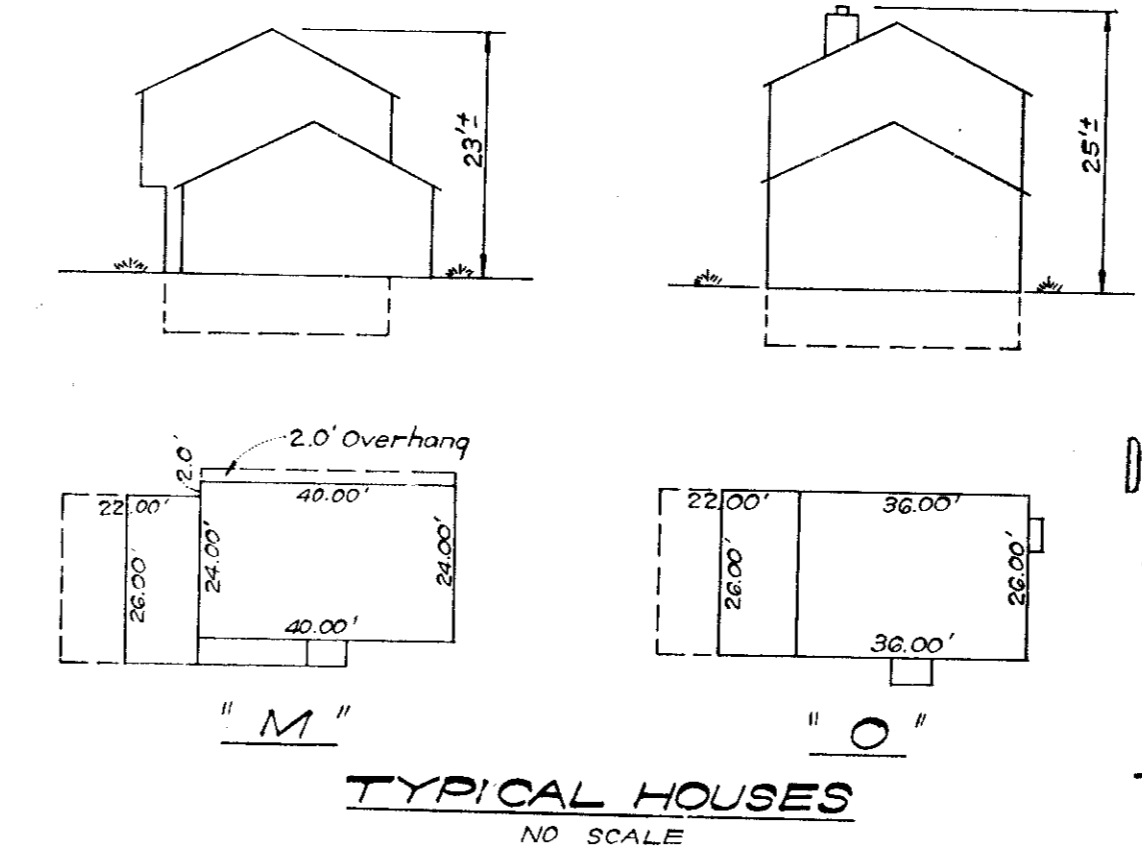
- 1. Contour Interval 2 Ft.
- 2. Existing Contours 340
- 3. Proposed Contours 340
- 4. Spot Elevations +40±
- 5. Direction Of Drainage
- 6. Yard Requirements: Front-20', Side - 7.5' (Min.)
- 7. Walk-Out Basement

GENERAL NOTES

- 1. All coordinates are based on Maryland State Grid System. Elevations are based on the U.S. Coast and Geodetic Survey Mean Sea Level Datum of 1929.
- 2. The Lots shown on this plan are covered by Final Development Plan Phase 77-A2 recorded in Plat Book 20 Folios 96 and 97.
- 3. The Area covered in this submission is located on Tax Maps No. 30436.
- 4. The total area included in this plan is 1.02 Acres.
- 5. The land included in this plan is zoned New Town (S.F.N.D.).
- 6. Eaglebeak Row & High Tor Hill are existing roadways.
- 7. Any damage to right of way or paving must be corrected at the Developer's expense.



VILLAGE OF SECTION I PLAT BOOK 23
LONGREACH AREA I FOLIO 10



APPROVED FOR PUBLIC WATER AND PUBLIC SEWERAGE SYSTEMS, HOWARD COUNTY HEALTH DEPARTMENT
COUNTY HEALTH OFFICER
DATE 12/16/75

APPROVED HOWARD COUNTY, OFFICE OF PLANNING & ZONING
PLANNING DIRECTOR
DATE 12-17-75

CHIEF DIVISION OF LAND DEVELOPMENT AND TRANSPORTATION PLANNING
DATE 12/17/75

APPROVED FOR PUBLIC WATER AND PUBLIC SEWERAGE, STORM DRAINAGE SYSTEMS AND PUBLIC ROADS, HOWARD COUNTY, DEPARTMENT OF PUBLIC WORKS
DIRECTOR
DATE 12-9-75

CHIEF BUREAU OF HIGHWAYS
DATE 12/8/75

NOTE: A grading permit (serial #26185) has been issued for these lots in accordance with previously approved plan #S.D.P. 74-18-C.



APPROVED
DIVISION OF LAND DEVELOPMENT AND TRANSPORTATION PLANNING
HOWARD COUNTY, MARYLAND
DATE 11-21-75

CLARK • FINEFROCK & SACKETT ENGINEERS • PLANNERS • SURVEYORS 11115 LICKWOOD DRIVE SILVER SPRING, MARYLAND 20904 (301) 593-3400		
DESIGNED DBS	SITE DEVELOPMENT PLAN LOTS 377 THRU 381	SCALE 1" = 30'
DRAWN CCM	COLUMBIA	DRAWING 1 OF 1
CHECKED DBS	VILLAGE OF LONGREACH SECTION I AREA 1 6TH ELECTION DISTRICT HOWARD COUNTY, MARYLAND	JOB NO.
DATE Oct, 1975	FOR: QUINCY DEVELOPMENT CO. 5051 Whetstone Road Columbia, Maryland 21043	FILE NO. 1167-X