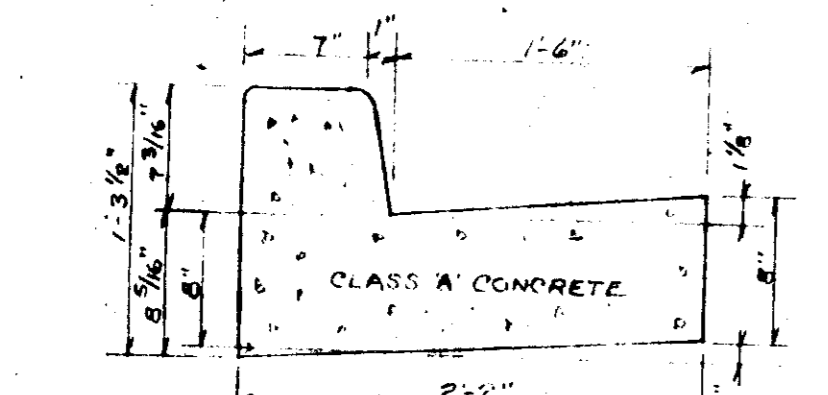


PARKING LOT AND STORAGE AREA
 BITUMINOUS CONCRETE SURFACE 1" BAND C-3
 BITUMINOUS CONCRETE BASE 4" BAND C-2
 C-2 OR C-3

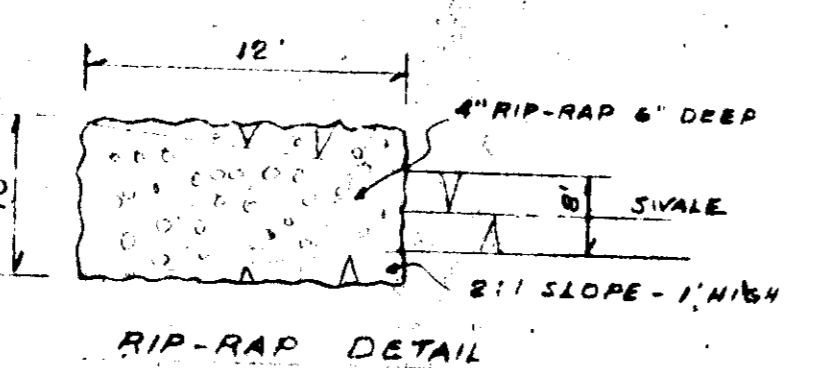
ROAD WIDENING AND ENTRANCE ROAD
 BITUMINOUS CONCRETE SURFACE 1 1/2" BAND C-3
 BITUMINOUS CONCRETE BINDER 5" GRAVEL MIX
 CRUSHER RUN BASE 6"

GRADING - ARTICLE C-1
 SUBGRADE - ARTICLE C-2
 BASE PRIME SECT C-30-3
 TASK COAT SECT C-31-4

PAVING DETAILS - HOWARD COUNTY
 ALL CONSTRUCTION TO BE IN ACCORDANCE WITH THE HOWARD COUNTY ROAD CONSTRUCTION CODE AND STANDARD SPECIFICATIONS.

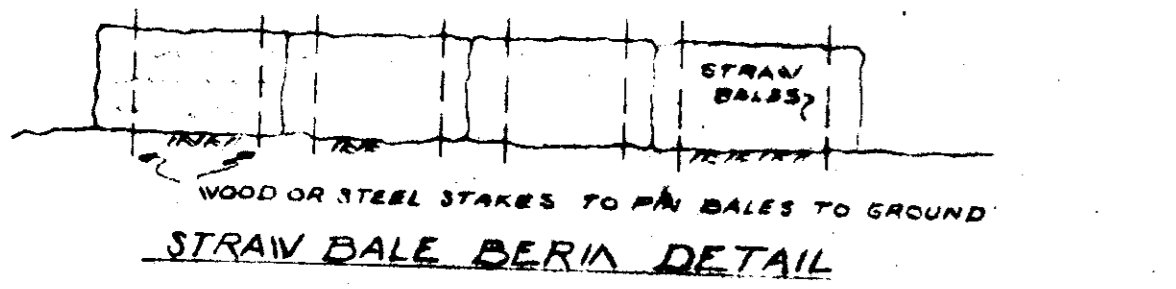


HOW. CTY. STANDARD 7" CURB & GUTTER

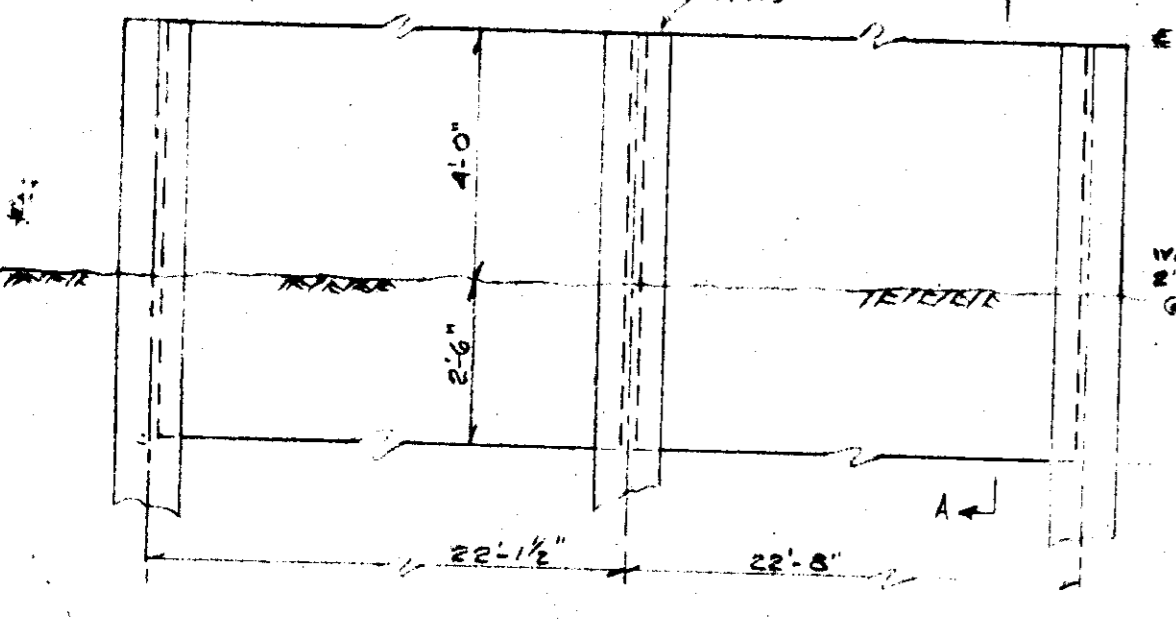


RIP-RAP DETAIL

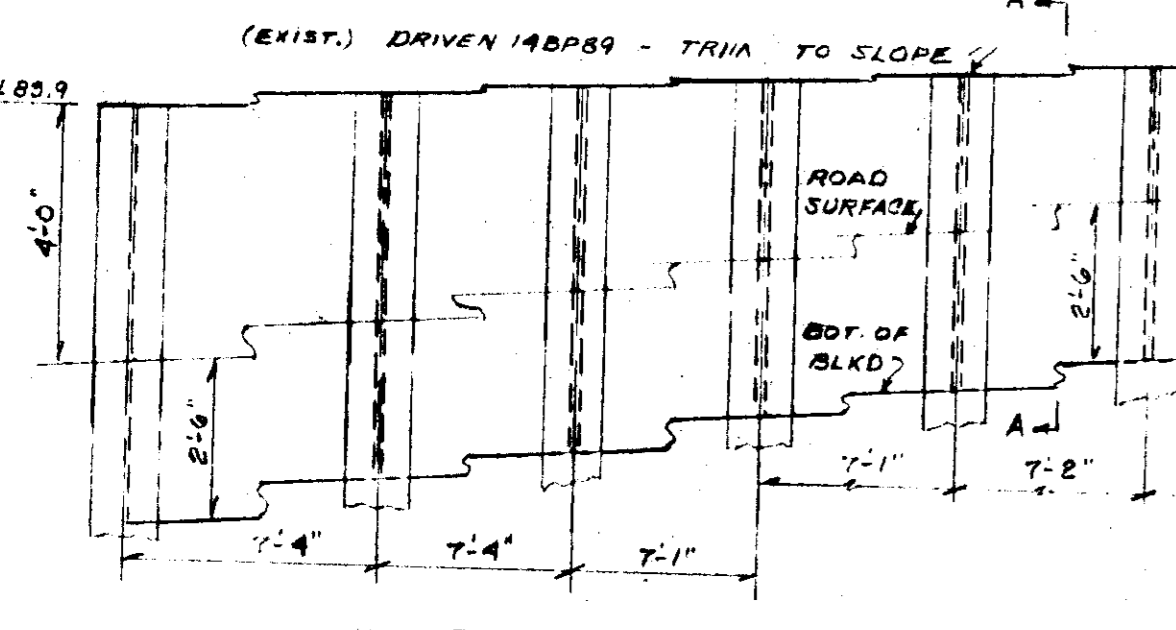
SEE PARALLEL DWGS ON FILE AT HOWARD COUNTY D.R.W. DEPTD 1974 FOR HEALTH DEPT APPROVAL



STRAW BALE BERM DETAIL

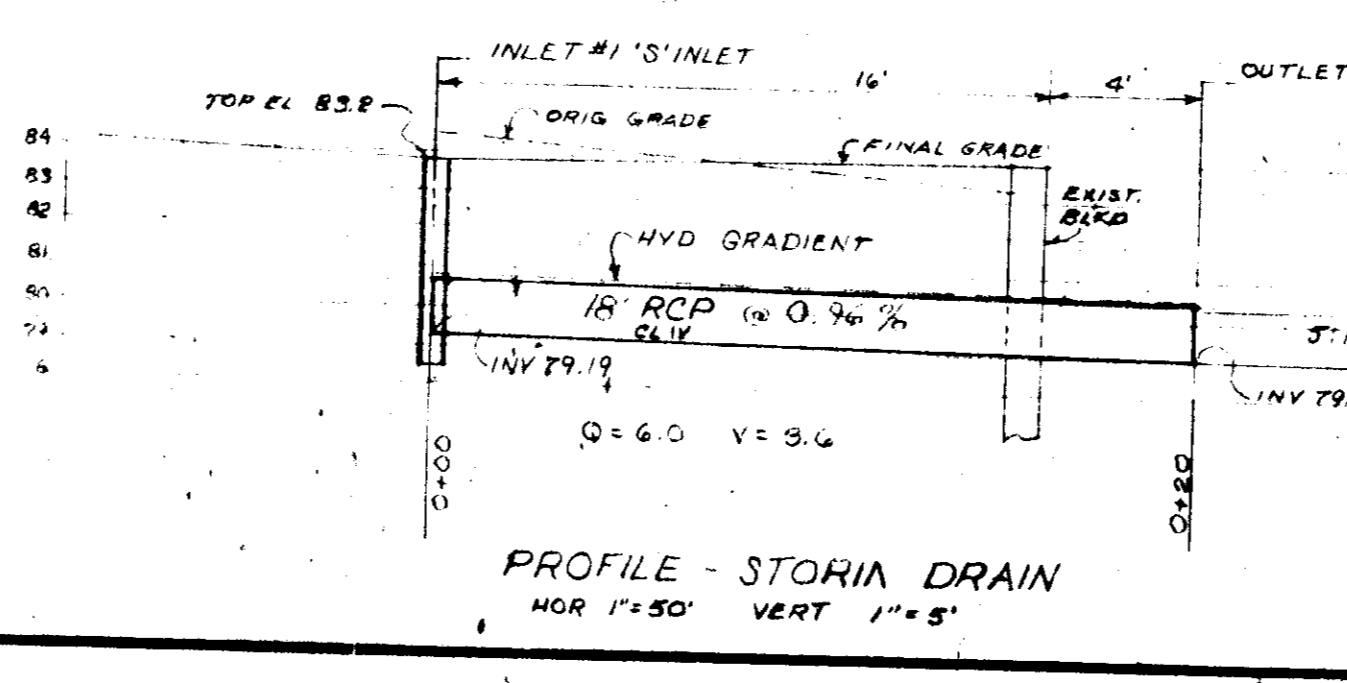


BULKHEAD 'A' - 8" REINFC CONG.

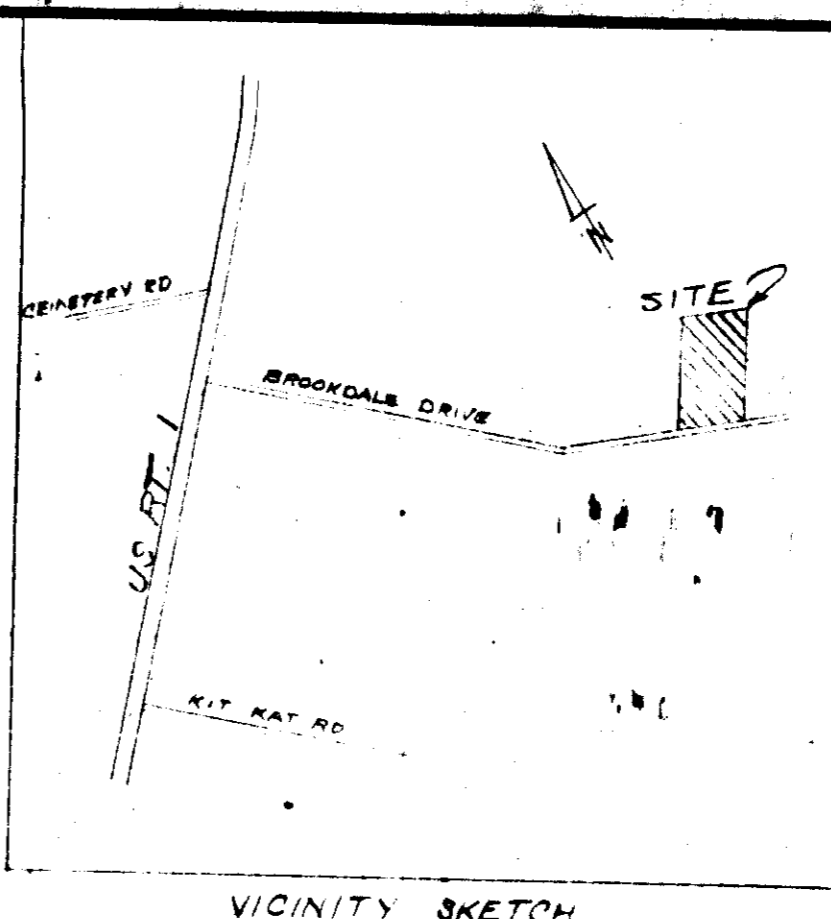
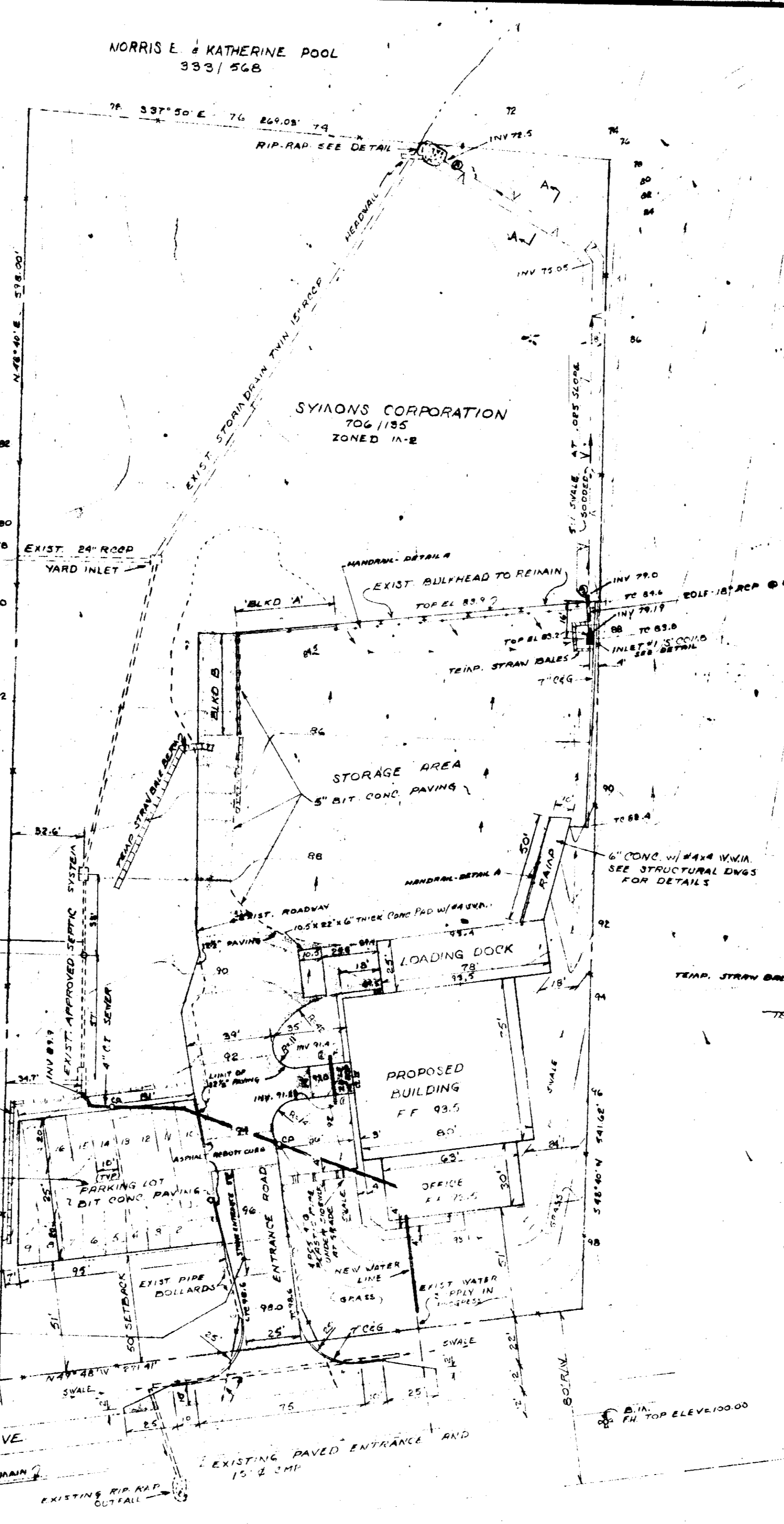


BULKHEAD B - 8" REINFC CONG. SECT A-A SAME AS BLKD A

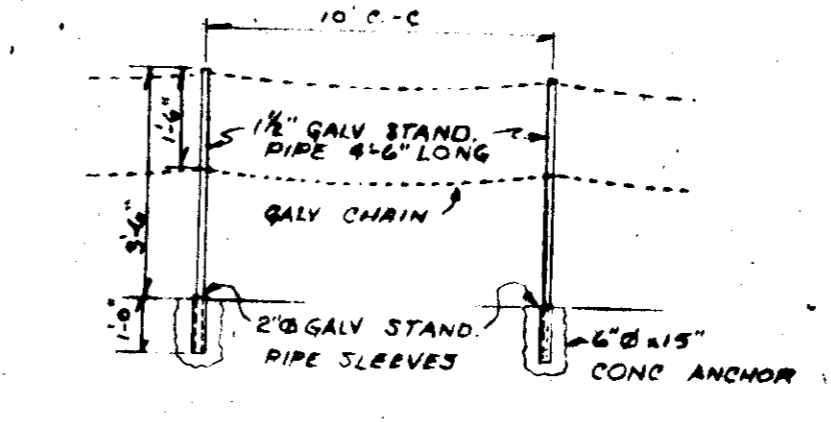
STRUCTURE		SCHEDULE		HOW. CTY. STAND DETAIL	
INLET #1	(S/SUMP)	TYPE	INVTN	INV OUT	TOP EL.
-	-	-	78.18	82.2	PAGE 153, DWG D-08



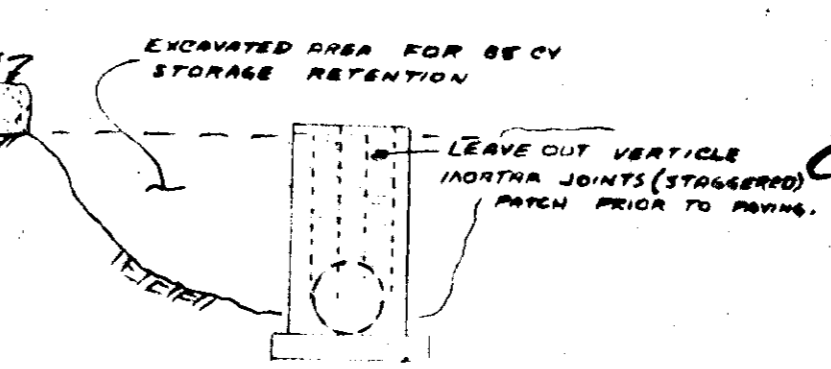
PROFILE - STORM DRAIN
 HOR 1"=50' VERT 1"=5'



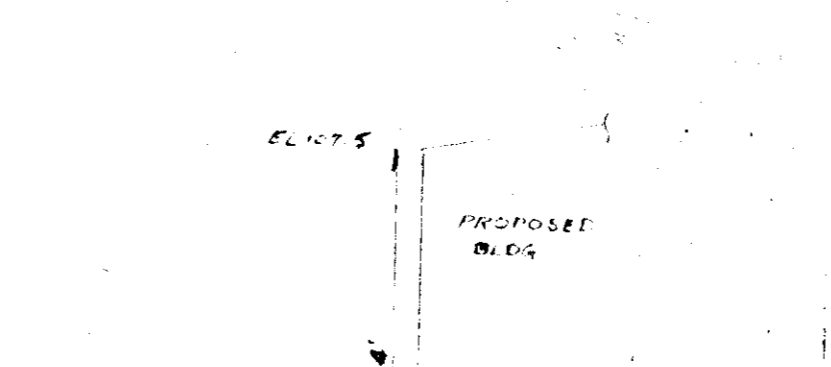
VICINITY SKETCH 1"=600'



MANHOLE DETAIL 'A'



INLET #1 - SILT TRAP



SCHEMATIC PROFILE

EROSION AND SEDIMENT CONTROL NOTES
 All siltation control work to be in accordance with standards and specifications of the Howard County Soil Conservation District Sediment Control Program and U.S. Soil Conservation Service. Total disturbed area = 1.5 ac.

ESTIMATED PHASING AND SCHEDULING OF DEVELOPMENT
 I. INSTALL STORM ENTRANCE, INLET #1, SILT TRAP AND PIPE, AND temporary straw bale berms to be built first. Start June 15, 1975.
 II. Rough Grading Start June 15, 1975
 III. Final Grading and vegetation + July to Sept. 1975.
 IV. Maintenance and Cleanup - After Sept. 1975.

SEED AND SOD REQUIREMENTS
 1. Seeded area approx. 16,700 sq ft, sodded area approx. 2000 sq ft.
 2. Sod to be Kentucky 31 Tall Fescue, or equal.
 3. Seed to be Kentucky 31 Tall Fescue, or equal, with 85% germination and 98% min. purity.
 4. Rates:
 Seeding: 5-7#/1000 sq ft
 Fertilizer: 10-10-10 25#/1000 sq ft
 Limestone: 50#/1000 sq ft
 Mulch: 75#/1000 sq ft
 Asphalt tie down: .01 Gal/sq ft
 5. Top soil to be spread over the areas to be seeded after it has been fine graded.
 6. Contractor to construct and maintain straw berms daily.
 7. Berms and other control measures to be maintained until planting and other permanent improvements are stabilized.

GENERAL NOTES
 1. Total area of property = 3.53 Ac. Zoned M-2
 2. Building = 7850 sq ft. Paving = 36,800 sq ft +-
 3. Orig. grade = 92 proposed grade = 94
 4. Entrance and parking are private. Public water is on the site, and the sewer system is private and approved.
 5. 10 employees. 17 parking spaces provided at 200 sq ft each.
 6. Use - office and warehouse for concrete forms.

I certify that all development or construction will be done according to this plan of Erosion and sediment control.

Signature of Developer: *Carl E. Cookerly*
 Date: 7/16/75

APPROVED: For Public water and Private Sewerage Systems, Howard County Health Department.
 Signature: *J. J. ...*
 Date: 7/17/75

APPROVED: Howard County Office of Planning and Zoning.
 Signature: *Thomas J. ...*
 Date: 7-31-75

APPROVED: For Public Water, Private Sewerage, and Storm Drainage Systems and Roads, Howard County Department of Public Works.
 Signature: *W. O. ...*
 Date: 7-28-75

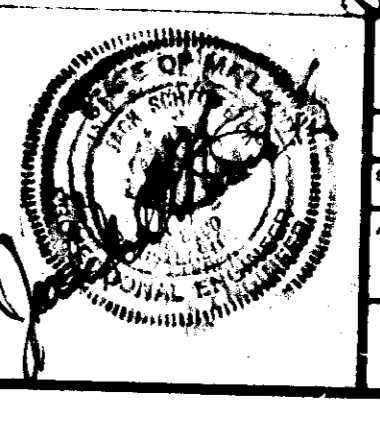
Reviewed for Howard S.C.D. and meets Technical Requirements.
 Signature: *C. ...*
 Date: 7-15-75

This development plan is approved for Soil Erosion and sediment Control by the Howard Soil Conservation District.
 APPROVED: *Blair ...*
 DATE: 7-15-75

I certify that this plan for Sediment Control represents a practical and workable plan based on my personal knowledge of the site conditions and that it was prepared in accordance with the requirements of the Howard Soil Conservation District.
 Signature of Engineer: *J. ...*
 Date: 7/16/75

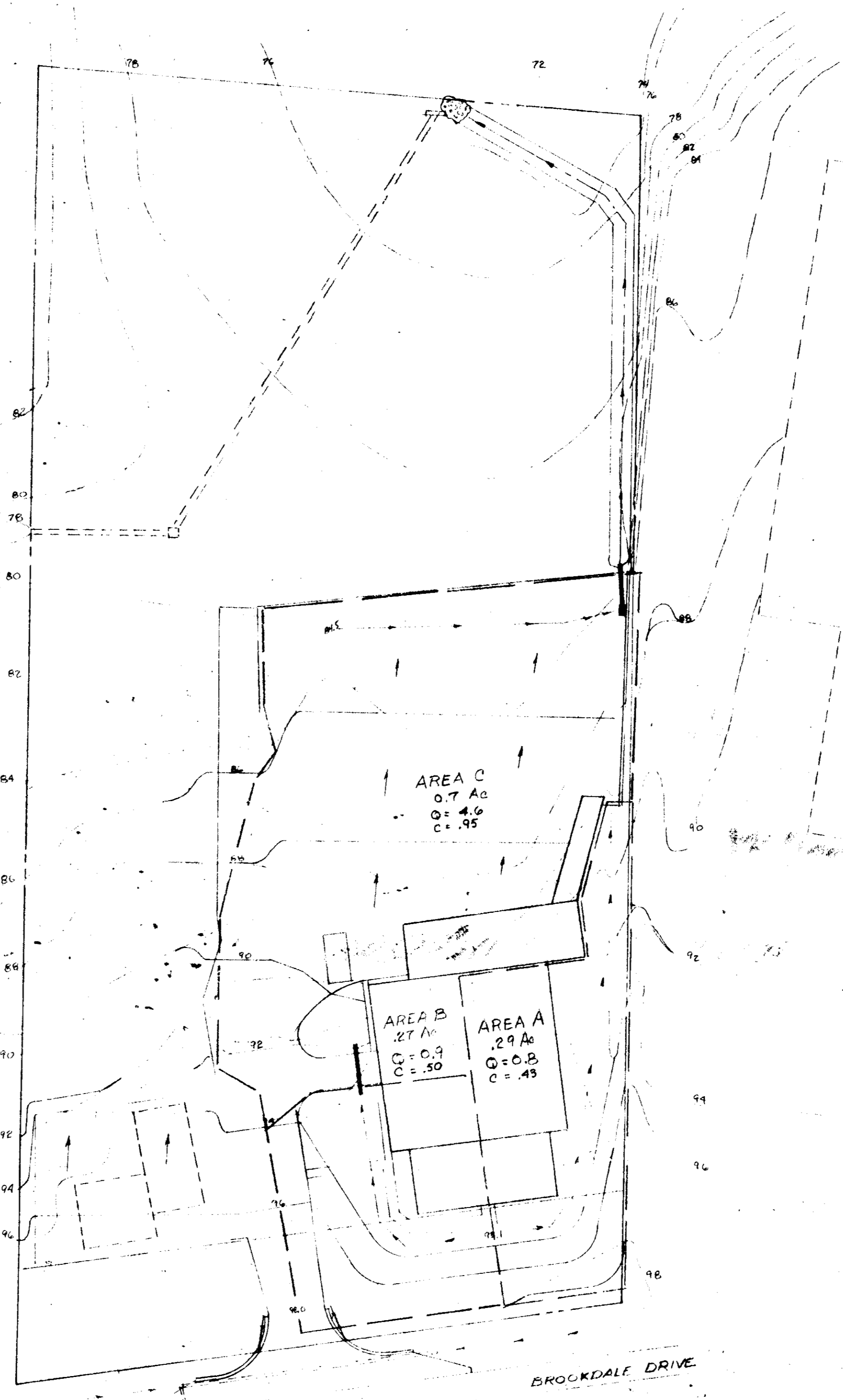
I certify that all development and/or construction will be done according to this plan of development and plan for Erosion and sediment control, and I also authorize periodic onsite inspection by the Howard Soil Conservation District or their authorized agents, as are deemed necessary.
 Deviation from this plan will not be made unless authorized by the Howard Soil Conservation District.
 Signature of Developer: *Carl E. Cookerly*
 Date: 7/16/75

APPROVED
 DIVISION OF LAND DEVELOPMENT AND TRANSPORTATION PLANNING
 HOWARD COUNTY, MARYLAND
 DATE: 7/3/75



SYMONS CORPORATION 7053 BROOKDALE DRIVE, ELK RIDGE, MARYLAND	
DATE: 4-14-75	DRAWN BY: J.S.F.
SCALE: 1"=40'	REVISED:
ENGINEER: JACK S. FELIX 430 WHITE PLAINS CT. SEVERNA PARK, MD 21745	REGISTERED PROFESSIONAL ENGINEER 174 ELECT. DIST. MARYLAND
SITE PLAN AND SEDIMENT CONTROL	DRAWING NUMBER: SP-1002

SDP-75-95



APPROVED FOR PUBLIC WATER AND PRIVATE SEWERAGE SYSTEM
HOWARD COUNTY HEALTH DEPARTMENT

C. Wayne Ray 7/17/75
COUNTY HEALTH OFFICER DATE

APPROVED HOWARD COUNTY OFFICE OF PLANNING AND ZONING
PLANNING DIRECTOR DATE 7-31-75
CHIEF, DIVISION OF LAND DEVELOPMENT AND TRANSPORTATION PLANNING DATE 7/24/75

APPROVED FOR PUBLIC WATER, PRIVATE SEWERAGE, AND STORM DRAINAGE SYSTEMS AND ROADS
HOWARD COUNTY DEPARTMENT OF PUBLIC WORKS

W. O. Pelham 7-28-75
DIRECTOR DATE
CHIEF, BUREAU OF HIGHWAYS DATE 7/27/75

REVIEWED FOR HOWARD S.C.D. AND MEETS TECHNICAL REQUIREMENTS
C. Wayne Ray 7-15-75
SIGNATURE DATE
U.S. SOIL CONSERVATION SERVICE

THIS DEVELOPMENT PLAN IS APPROVED FOR SOIL EROSION AND SEDIMENT CONTROL BY THE HOWARD SOIL CONSERVATION DISTRICT

APPROVED Robert J. Zehm 7-15-75
HOWARD S.C.D. DATE

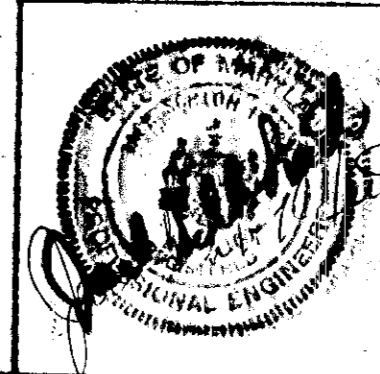
I CERTIFY THAT THIS PLAN FOR SEDIMENT CONTROL REPRESENTS A PRACTICAL AND WORKABLE PLAN BASED ON MY PERSONAL KNOWLEDGE OF THE SITE CONDITIONS AND THAT IT WAS PREPARED IN ACCORDANCE WITH THE REQUIREMENTS OF THE HOWARD SOIL CONSERVATION DISTRICT

Carl E. Cooney 7/9/75
SIGNATURE OF ENGINEER DATE

I CERTIFY THAT ALL DEVELOPMENT AND/OR CONSTRUCTION WILL BE DONE ACCORDING TO THIS PLAN OF DEVELOPMENT AND PLAN FOR EROSION AND SEDIMENT CONTROL, AND I AUTHORIZE PERIODIC ON-SITE INSPECTION BY THE HOWARD SOIL CONSERVATION DISTRICT OR THEIR AUTHORIZED AGENTS, AS ARE DEEMED NECESSARY. DEVIATION FROM THIS PLAN WILL NOT BE MADE UNLESS AUTHORIZED BY THE HOWARD SOIL CONSERVATION DISTRICT.

Carl E. Cooney July 14, 1975
SIGNATURE OF DEVELOPER DATE
CARL E. COONEY DISTRICT MGR.

APPROVED
DIVISION OF LAND DEVELOPMENT
AND TRANSPORTATION PLANNING
HOWARD COUNTY, MARYLAND
DATE 7/13/75
JFK



SYMONS CORPORATION
7055 BROOKDALE DRIVE, ELKBRIDGE, MARYLAND

DATE 4-14-75 DRAWN BY J.S.F. APPROVED BY
SCALE 1"=40' REVISED
ENGINEER: JACK S. FEICK HOWARD COUNTY
380 WHITE PLAINS CT. CIVIL ENGR. 107,663
SEVERNA PARK, MD 207-6835
DRAWING NUMBER
DRAINAGE AREA SP. 2 of 2

SDP-75-95