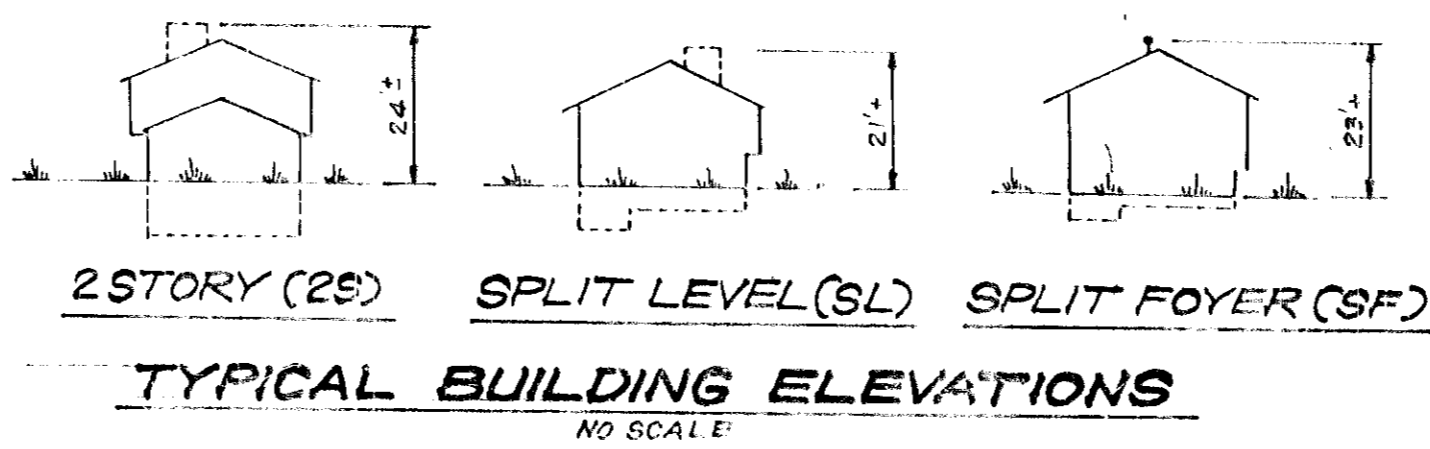
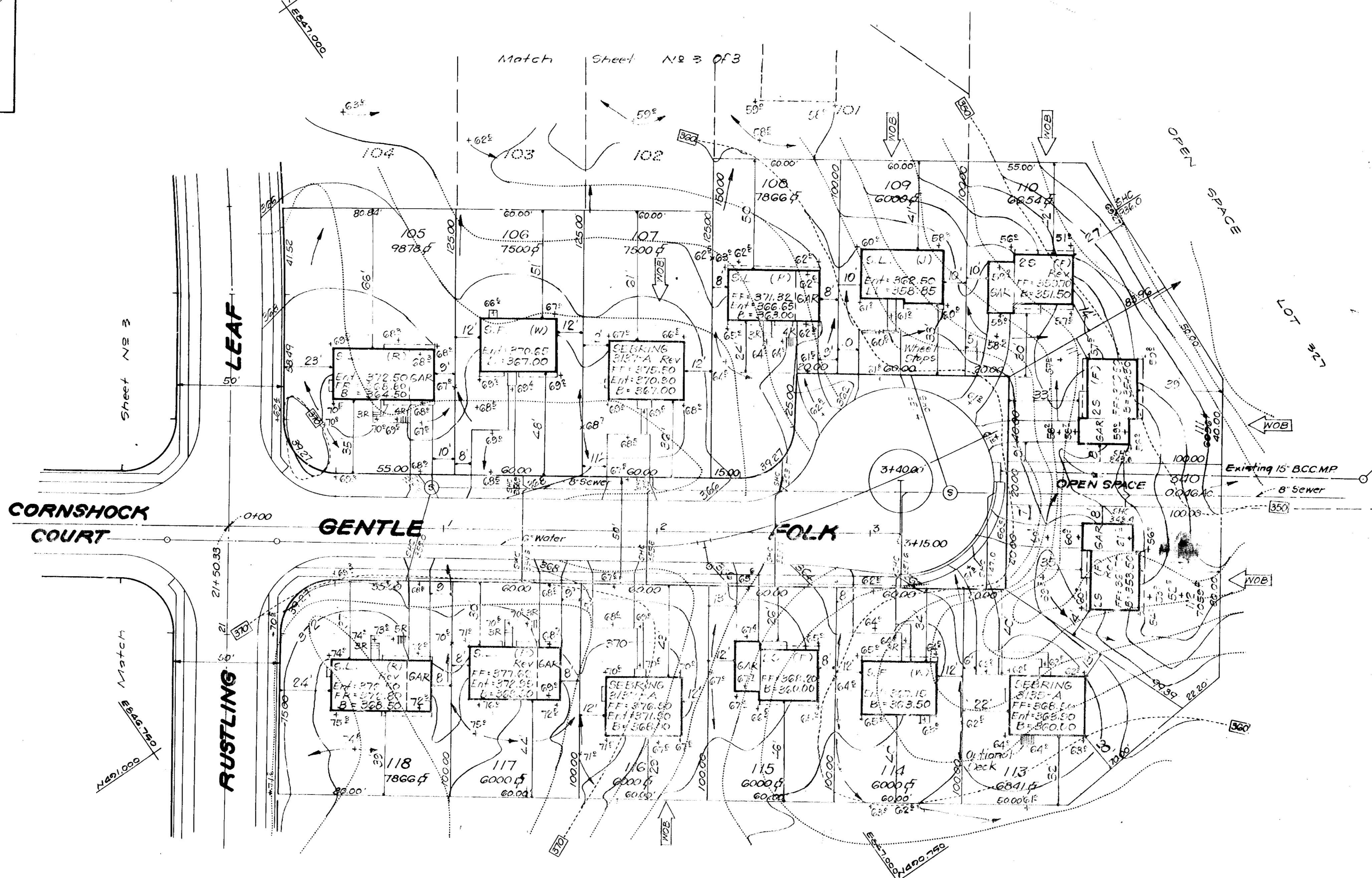


VICINITY MAP
SCALE: 1" = 3000'

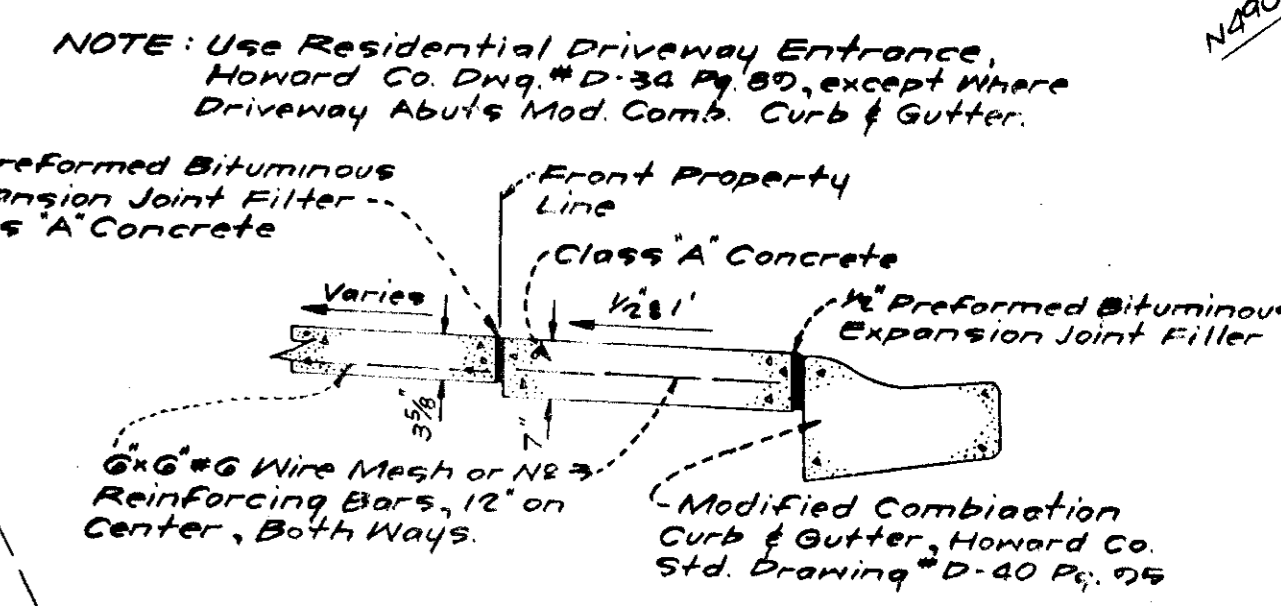
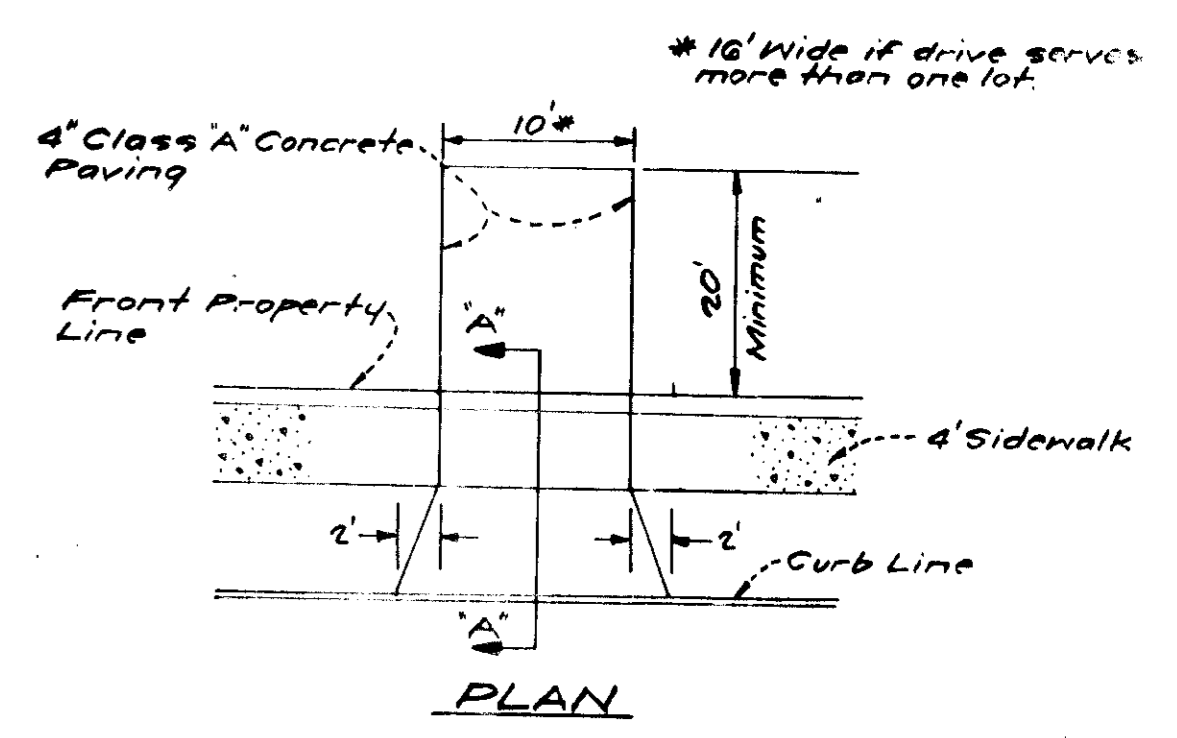


VILLAGE OF OWEN BROWN
SECTION 2
AREA 3



LEGEND

- Contour Interval 2 Ft.
- Existing Contours [360]
- Proposed Contours 360
- Spot Elevations +60.5
- Direction Of Drainage [Arrow]
- Retaining Wall [Symbol]
- Yard Requirements:
Front-20' On 50' Wide Streets
30' On 60' Wide Streets
Side 75' (Min.)
- Walk Out Basement [WOB]



NOTE: Use Residential Driveway Entrances, Howard Co. Dwg. # D-34 Pg. 60, except where Driveway Abuts Mod. Comb. Curb & Gutter.

THE HOWARD RESEARCH AND DEVELOPMENT CORP.
Liber 463 Folio 196

SURVEYOR'S CERTIFICATION

I hereby certify that the information contained hereon is the same as that shown on previously approved S.D.P. # 74-40C, with the following exceptions:
1. House types and grading have been revised on Lots 105, 106, 108-112, 114, 115, 117 and 118.
I further certify that the Sediment and Erosion Control measures, as previously approved, will not be effected; the grading remains substantially the same as originally planned; the building setbacks comply with those established in F.O.P. Ord. 118 Part III; and the L&I configurations are geometrically the same as shown on the respective recorded subdivision plat.

5/16/75
DATE

Donald B. Sackett
DONALD B. SACKETT
Registered Land Surveyor
Md. No. 6059

APPROVED: FOR PUBLIC WATER AND PUBLIC SEWERAGE SYSTEMS, HOWARD COUNTY HEALTH DEPARTMENT	DATE
COUNTY HEALTH OFFICER	
APPROVED: HOWARD COUNTY OFFICE OF PLANNING & ZONING	DATE
PLANNING DIRECTOR	
CHIEF DIVISION OF LAND DEVELOPMENT & TRANSPORTATION PLANNING	DATE
APPROVED: FOR PUBLIC WATER AND PUBLIC SEWERAGE, STORM DRAINAGE SYSTEMS AND PUBLIC ROADS, HOWARD COUNTY DEPARTMENT OF PUBLIC WORKS	DATE
DIRECTOR	
CHIEF BUREAU OF HIGHWAYS	DATE

NOTE: For bearings and distances of individual lot lines, see record plat recorded in Plat Book 25 Folio 30. For Houses not effected by these revisions, see S.D.P. # 74-40C, Sheet 1 of 6.

CLARK • FINEROCK & SACKETT
ENGINEERS • PLANNERS • SURVEYORS
11315 LOCKWOOD DRIVE SILVER SPRING, MARYLAND 20904 (301) 583-3400

DESIGNED	REVISED SITE DEVELOPMENT PLAN	SCALE
D.B.S.	LOTS 29, 58, 59, 40, 48, 52, 55, 71, 78, 79, 76, 97, 98, 104-106, 108-112, 114, 115, 117 & 118	1" = 30'
DRAWN		DRAWING
K.W.C.		101 B
CHECKED		JOB NO.
D.B.S.		
DATE	APRIL 1975	FILE NO.
		1136-X

FOR: RYLAND HOMES, COLUMBIA DIVISION
Suite 200 V.O.M. Office Building
Columbia, Maryland 21043

LEGEND

1. Contour Interval 2 Ft.
2. Existing Contours 360
3. Proposed Contours 360
4. Spot Elevations +60.5
5. Direction Of Drainage
6. Retaining Wall
7. Yard Requirements:
Front-20' On 50' Wide Streets
30' On 60' Wide Streets
Side 7.5' (Min.)
8. Walk Out Basement
9. Existing Trees To Be Retained

SURVEYOR'S CERTIFICATION

I hereby certify that the information contained hereon is the same as that shown on previously approved S.D.P. # 74-40C, with the following exceptions:

1. House types and grading have been revised on Lots 23, 33, and 35-40.

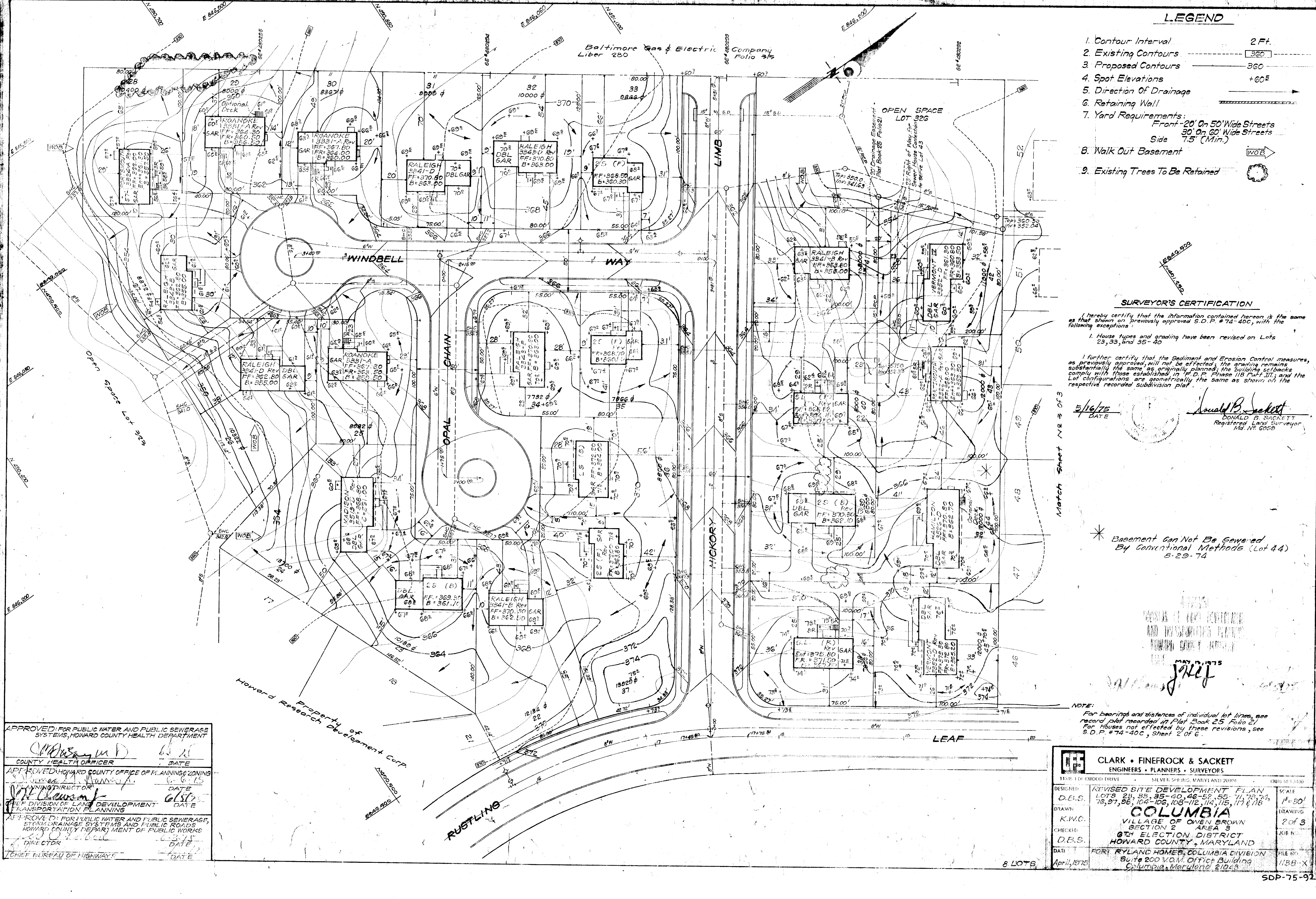
I further certify that the Sediment and Erosion Control measures, as previously approved, will not be effected; the grading remains substantially the same as originally planned; the building setbacks comply with those established in F.D.P. Phase 118 Part III; and the Lot configurations are geometrically the same as shown on the respective recorded subdivision plat.

5/16/75
DATE

Donald B. Sackett
DONALD B. SACKETT
Registered Land Surveyor
Md. No. 6058

* Basement Can Not Be Sewered By Conventional Methods (Lot 44) 5-29-74

NOTE:
For bearings and distances of individual lot lines, see record plat recorded in Plat Book 25 Folio 21 for houses not effected by these revisions, see S.D.P. #74-40C, Sheet 2 of 6.



APPROVED FOR PUBLIC WATER AND PUBLIC SEWERAGE SYSTEMS, HOWARD COUNTY HEALTH DEPARTMENT

[Signature] 6/15/75
COUNTY HEALTH OFFICER DATE

APPROVED HOWARD COUNTY OFFICE OF PLANNING & ZONING

[Signature] 6/15/75
PLANNING DIRECTOR DATE

CHIEF DIVISION OF LAND DEVELOPMENT & TRANSPORTATION PLANNING

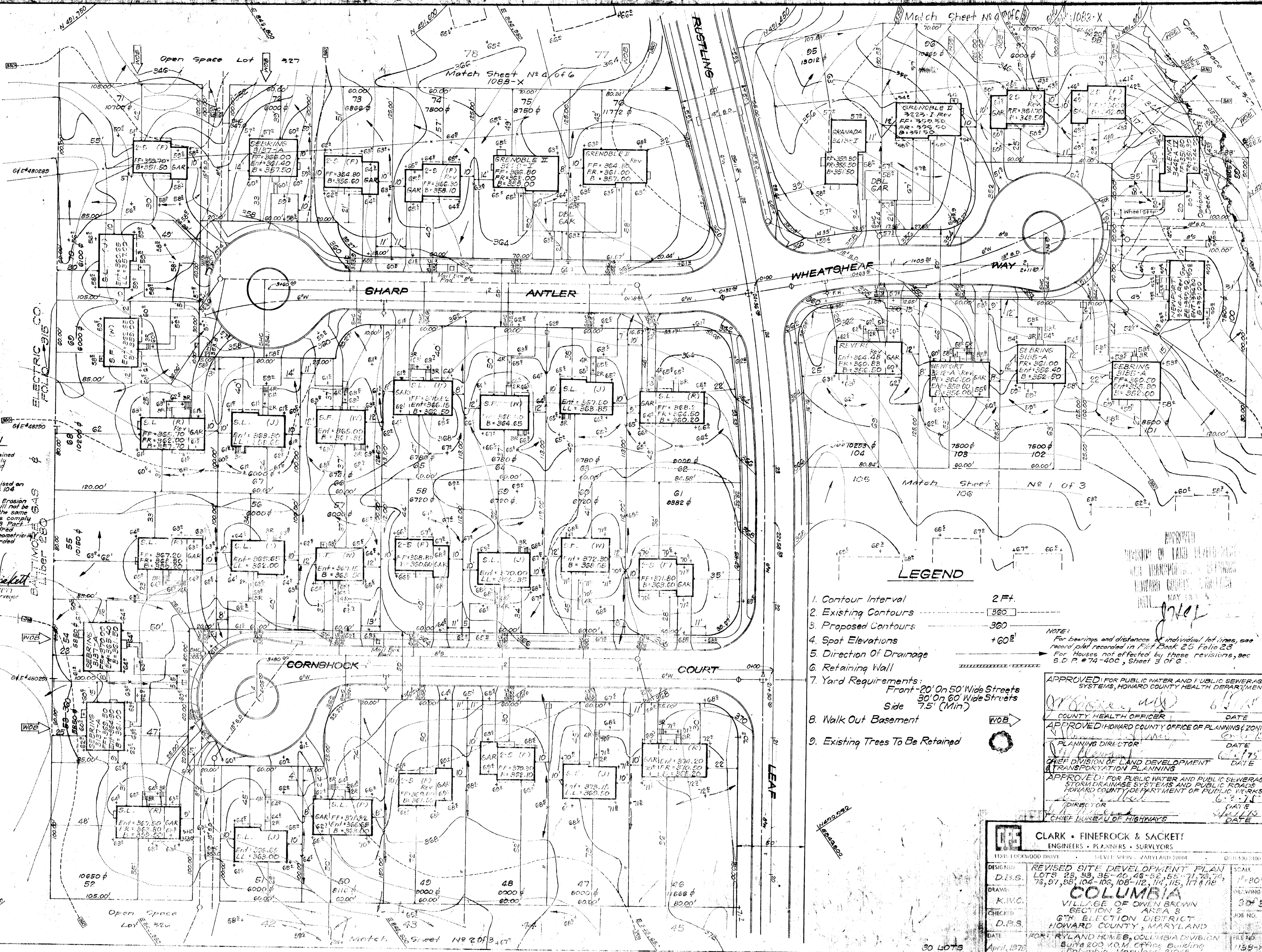
[Signature] 6/15/75
DIRECTOR DATE

APPROVED FOR PUBLIC WATER AND PUBLIC SEWERAGE, STORM DRAINAGE SYSTEMS AND PUBLIC ROADS, HOWARD COUNTY DEPARTMENT OF PUBLIC WORKS

[Signature] 6/15/75
DIRECTOR DATE

CHIEF BUREAU OF HIGHWAYS

CLARK • FINEROCK & SACKETT ENGINEERS • PLANNERS • SURVEYORS		
1133 E. OF RYLAND DRIVE SILVER SPRING, MARYLAND 20906 (301) 581-3100		
DESIGNED	REVISED SITE DEVELOPMENT PLAN LOTS 23, 35, 40, 46-52, 55, 71, 73, 74, 78, 87, 96, 104-106, 108-112, 114, 115, 117 & 118	SCALE 1" = 30'
DRAWN	COLUMBIA	DRAWING 2 of 3
K.W.C.	VILLAGE OF OWEN BROWN SECTION 2 AREA 3	JOB NO.
CHECKED	6TH ELECTION DISTRICT HOWARD COUNTY, MARYLAND	FILE NO.
D.B.S.	FOR RYLAND HOMES, COLUMBIA DIVISION Suite 200 V.O.M. Office Building Columbia, Maryland 21043	DATE April, 1975
DATE	8 LOTS	SDP-75-92



SURVEYOR'S CERTIFICATION

I hereby certify that the information contained hereon is the same as that shown on previously approved S.D.P. # 74-40C, with the following exceptions:

- House types and grading have been revised on Lots 46, 52, 55-71, 73, 74, 76, 77, 98 & 104.
- Further certify that the Sediment and Erosion Control measures, as previously approved, will not be effected; the grading remains substantially the same as originally planned; the building setbacks comply with those established in F.D.P. # 118 Part III, with certain approved variances for parked garages; and the Lot configurations are geometrically the same as shown on the respective recorded subdivision plans.

5/16/75
 DATE
 Donald P. Sackett
 DONALD P. SACKETT
 Registered Land Surveyor
 No. A. 6053

- LEGEND**
- Contour Interval 2 Ft.
 - Existing Contours 360
 - Proposed Contours 360
 - Spot Elevations +60'
 - Direction Of Drainage
 - Retaining Wall
 - Yard Requirements:
 Front - 20' On 50' Wide Streets
 30' On 60' Wide Streets
 Side 7.5' (Min)
 - Walk Out Basement
 - Existing Trees To Be Retained

NOTE:
 Footings and distances of individual lot lines, see Record Plat recorded in S.D.P. # 25 Folio 23
 For Houses not affected by these revisions, see S.D.P. # 74-40C, Sheet 3 of 6.

APPROVED: FOR PUBLIC WATER AND PUBLIC SEWERAGE SYSTEMS, HOWARD COUNTY HEALTH DEPARTMENT
 COUNTY HEALTH OFFICER DATE
 APPROVED: PLANNING DIRECTOR OFFICE OF PLANNING & ZONING
 PLANNING DIRECTOR DATE
 CHIEF DIVISION OF LAND DEVELOPMENT & TRANSPORTATION PLANNING
 APPROVED: FOR PUBLIC WATER AND PUBLIC SEWERAGE, STORM DRAINAGE SYSTEMS AND PUBLIC ROADS, HOWARD COUNTY DEPARTMENT OF PUBLIC WORKS
 DIRECTOR DATE
 CHIEF BUREAU OF HIGHWAYS DATE

CLARK • FINEPROCK & SACKETT
 ENGINEERS • PLANNERS • SURVEYORS
 11111 LOCKWOOD DRIVE SUITE 200 WASHINGTON, MARYLAND 20904 (301) 591-1300

DESIGNED BY: REVISED SITE DEVELOPMENT PLAN
 DRAWN BY: D.B.S.
 CHECKED BY: K.M.C.
 DATE: APRIL 1975

LOTS 23, 53, 35-40, 46-52, 55-71, 73, 74, 76, 77, 98, 99, 104-106, 108-112, 114, 115, 117 & 118

COLUMBIA
 VILLAGE OF OWEN BROWN SECTION 2 AREA 3
 6TH ELECTION DISTRICT
 HOWARD COUNTY, MARYLAND

SCALE: 1" = 20'
 DRAWING: 307 B
 SHEET NO.: 113 B-K
 FILE NO.: SDP-75-92C