

Reviewed for *Howard* S.C.D. Name
 and meets Technical Requirements
 Signature
 U. S. Soil Conservation Service
 THIS DEVELOPMENT PLAN IS APPROVED FOR SOIL EROSION AND SEDIMENT CONTROL BY THE HOWARD SOIL CONSERVATION DISTRICT
 Approved *[Signature]* Date *2-10-75*
 Howard S.C.D.
 VICINITY MAP
 NO SCALE

SITE INFORMATION
 OWNER: BOARD OF EDUCATION
 RTE. 32, CLARKSVILLE, MD.
 LOCATION: WORTHINGTON SUBDIVISION
 ELECTION DISTRICT: #2
 TAX MAP: 31
 PARCEL #: 121
 AREA OF PROPERTY: 857782.84 SQ. FT. = 19.6920 ACRES
 ZONING: R-20
 PROPERTY RECORDED IN LIBER _____ FOLIO _____

CO. COMM. OF HOW. CTY. 100/339
 PLAY EQUIPMENT IN SAND PLAY AREA
 1- Magic Carpet Climber
 2- Bunker Hill - 2 Way
 3- Slide
 4- Overhead Ladder
 5- Cargo Net
 6- Triple Climbing Bar
 For all above, refer to Specs.
 COMPLETE SET OF SITE DEVELOPMENT DRAWINGS CONSISTS OF:
 G-1, G-2 LAYOUT PLAN
 G-3, G-4 GRADING PLAN AND SEDIMENT CONTROL PLAN
 G-5, G-6 STORM SEWER PROFILES AND DETAILS
 DD-1, DD-2 DRAINAGE DIVIDES
 9 PAGES OF STORE SEWER COMPUTATIONS

ASSOCIATED ENGINEERS, INC.
 SITE ENGINEERS
 8005 SPRING WALK ROAD
 SILVER SPRING, MARYLAND 20910
 TEL. 301-588-2311
 REV. DATE - 12/16/74 TO MEET COUNTY REQUIREMENTS

APPROVED FOR PUBLIC WATER AND PUBLIC SEWERAGE SYSTEMS, HOWARD COUNTY HEALTH DEPARTMENT
 COUNTY HEALTH OFFICER _____ DATE _____
 APPROVED, HOWARD COUNTY OFFICE OF PLANNING AND ZONING
[Signature] DATE 2/20/75
 PLANNING DIRECTOR
[Signature] DATE 2/20/75
 CHIEF DIVISION OF LAND DEVELOPMENT
 TRANSPORTATION PLANNING
 APPROVED FOR PUBLIC WATER PUBLIC SEWER AND STORM DRAINAGE SYSTEMS AND ROADS HOWARD COUNTY DEPARTMENT OF PUBLIC WORKS
[Signature] DATE 2/20/75
 DIRECTOR
 CHIEF BUREAU OF HIGHWAYS
 DRIVeways AND PARKING AREA ARE PRIVATE

SCALE: 1" = 40'
 SHEET NO. G-1

- GENERAL NOTES**
- See Building Dimensions and Additional Details refer to Architectural Drawings.
 - For Sanitary Sewer, Gas, Water and Roof Drain connections to Storm sewers refer to Mechanical Plans.
 - For all electrical work refer to Electrical Plans.
 - All disturbed, unpaved areas to be topsoiled, fertilized, limed, seeded and mulched, unless shown sodded. All slopes 3:1 or steeper shall be sodded.
 - All construction and materials shall be in accordance with Howard County Road Construction Code, and applicable provisions of the Maryland State Highway Administration "Specification for Materials, Highways, Bridges and Incidental Structures".
 - All existing utilities are based on available records and were field-checked where possible. Contractor must dig test pits by hand at all utility crossings and connection points to verify exact location and invert well in advance of construction. If clearances are not as shown or if a conflict is anticipated, Architect shall be notified before proceeding with trenching.
 - All exposed portions of channels, frames and gates of storm drainage structures shall receive two coats of an approved paint.
 - All structures having a depth of 3 feet or more shall have C.I. manhole steps, staggered at 15" O.C.
 - Standard Curb and Gutter for drives and parking area on site to be Howard County S-1d 7" Combination curb and gutter as shown on Drawing D-40, page 95 of the County Standards.
 - All existing paving, curbs, walks and seeded areas, disturbed by this construction shall be repaired as necessary to meet Architect's and Owner's approval.
 - Contact "MISS UTILITY" AT LEAST 24 HOURS PRIOR TO COMMENCING EXCAVATION.
 - No Storm Sewers to be installed until cut and fill is balanced and totally compacted (See Grading Notes #2 and #3 - Drawing G-3).
 - Horizontal control and grid system are based on assumed datum.

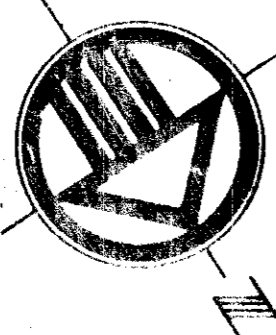
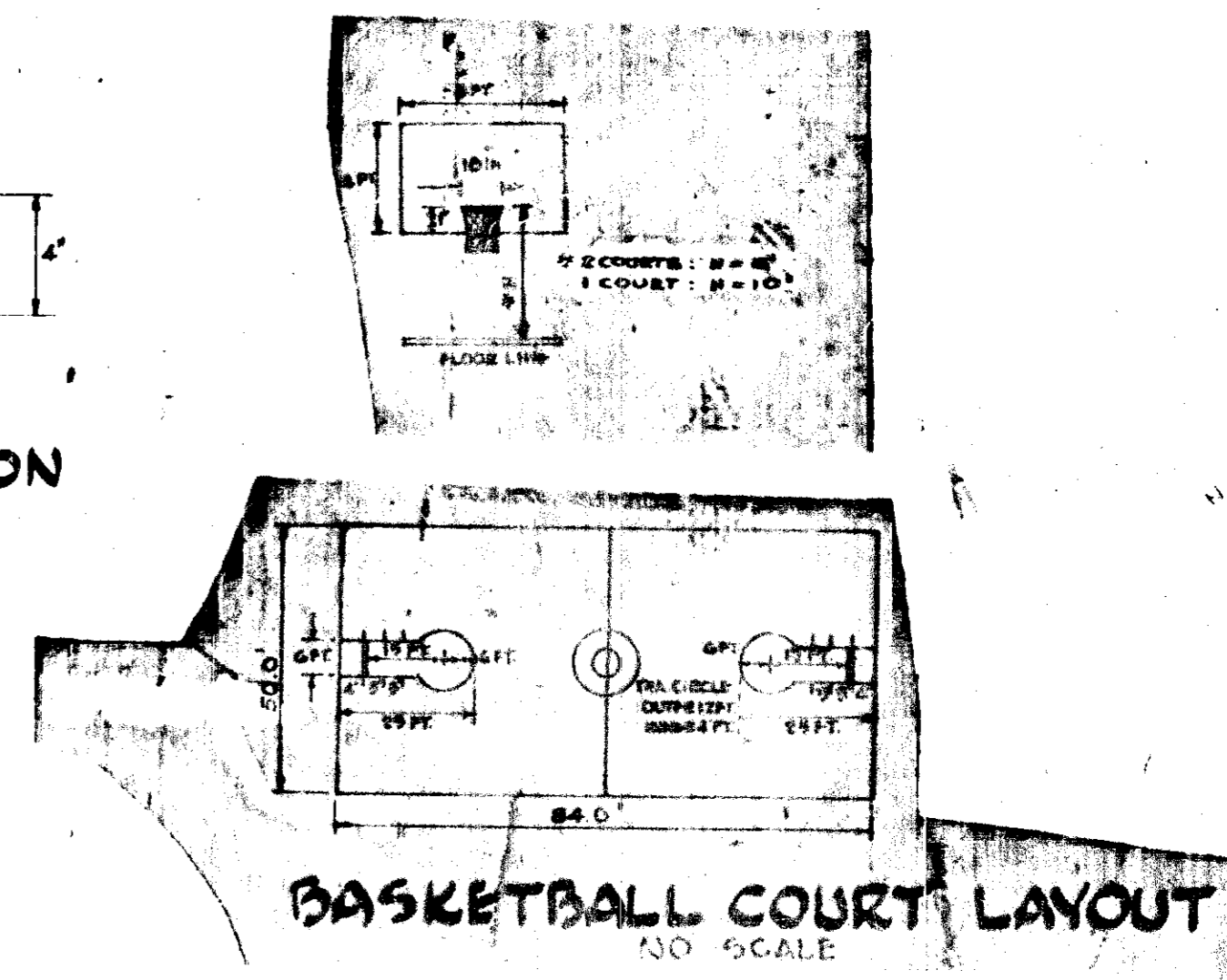
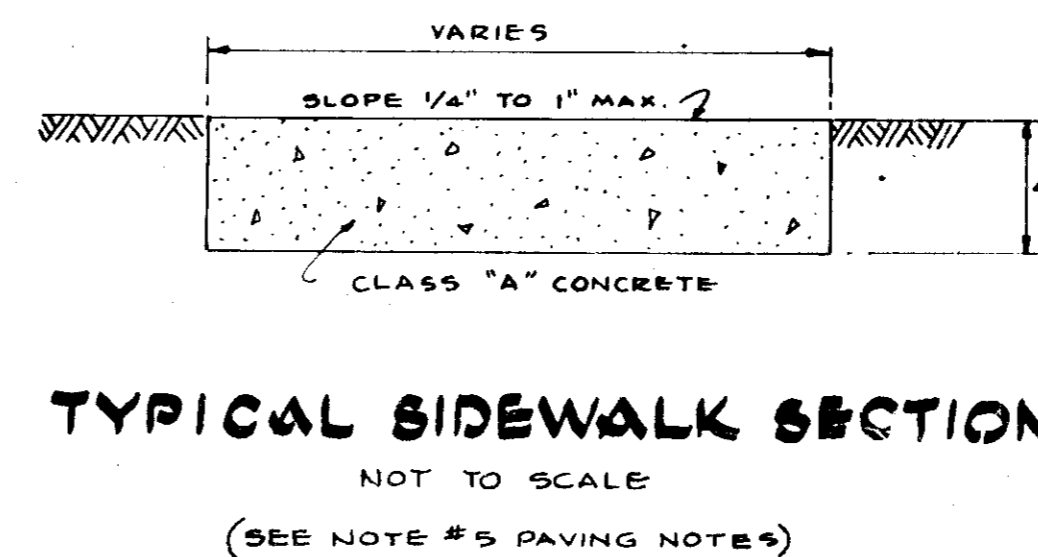
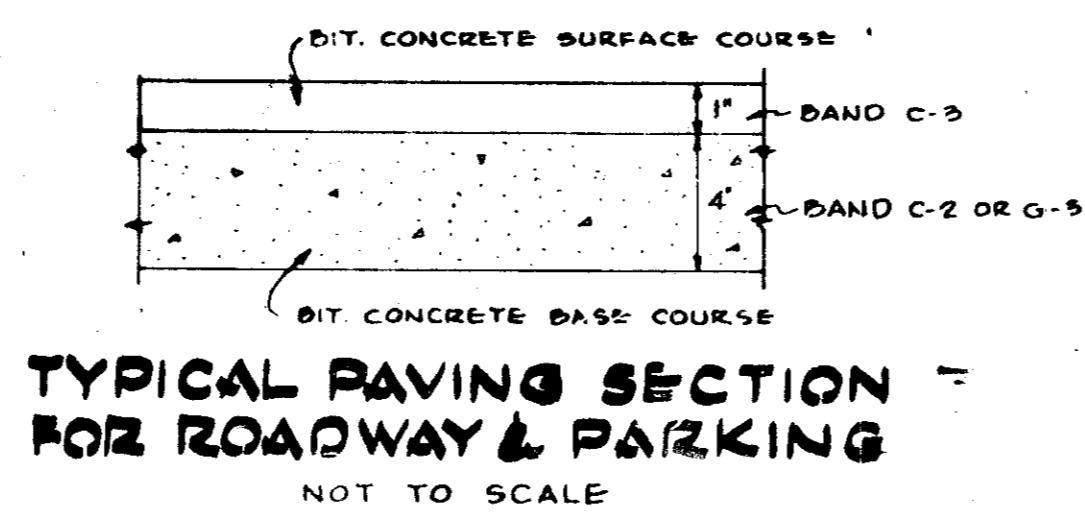
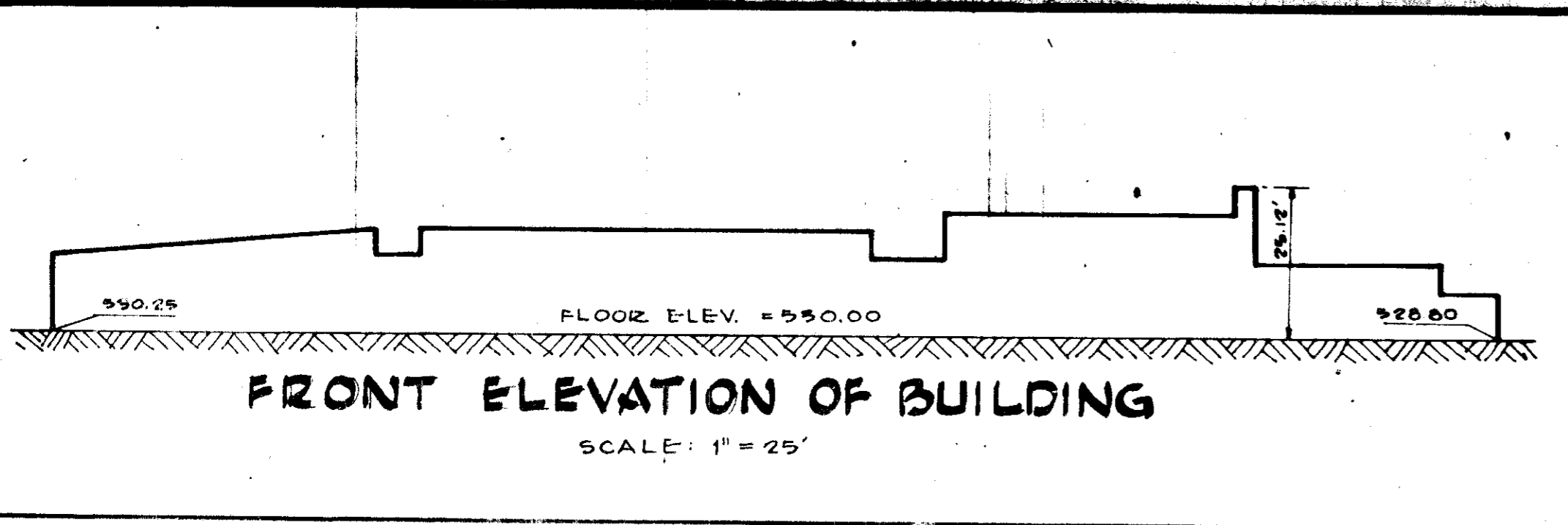
CURVE TABLE

CURVE	RADIUS	A	ARC	TAN.	CHD.	CHD. BEARING
(A)	215.00'	10° 21' 00"	38.84'	19.47'	38.79'	N 62° 15' 30" W
(B)	50.00'	35° 45' 55"	31.18'	16.12'	30.68'	S 74° 56' 55" E
(C)	55.00'	35° 45' 55"	21.85'	11.26'	21.48'	S 74° 56' 55" E

- LEGEND**
- [Symbol] NEW BUILDING
 - [Symbol] EXISTING BUILDING
 - [Symbol] NEW CONCRETE CURB & GUTTER
 - [Symbol] NEW ASPHALT PAVING
 - [Symbol] EXISTING PAVING
 - [Symbol] NEW CONCRETE WALKS OR SLABS
 - [Symbol] PAINTED PARKING LINES
 - [Symbol] ROOF DRAIN CONNECTION
 - [Symbol] PROPERTY LINE
 - [Symbol] NEW STORM SEWER PIPE AND TREE
 - [Symbol] EXISTING SANITARY SEWER PIPE AND MANHOLE
 - [Symbol] EXISTING WATER (W) AND GAS (G) PIPES
 - [Symbol] CONSTRUCTION FENCE

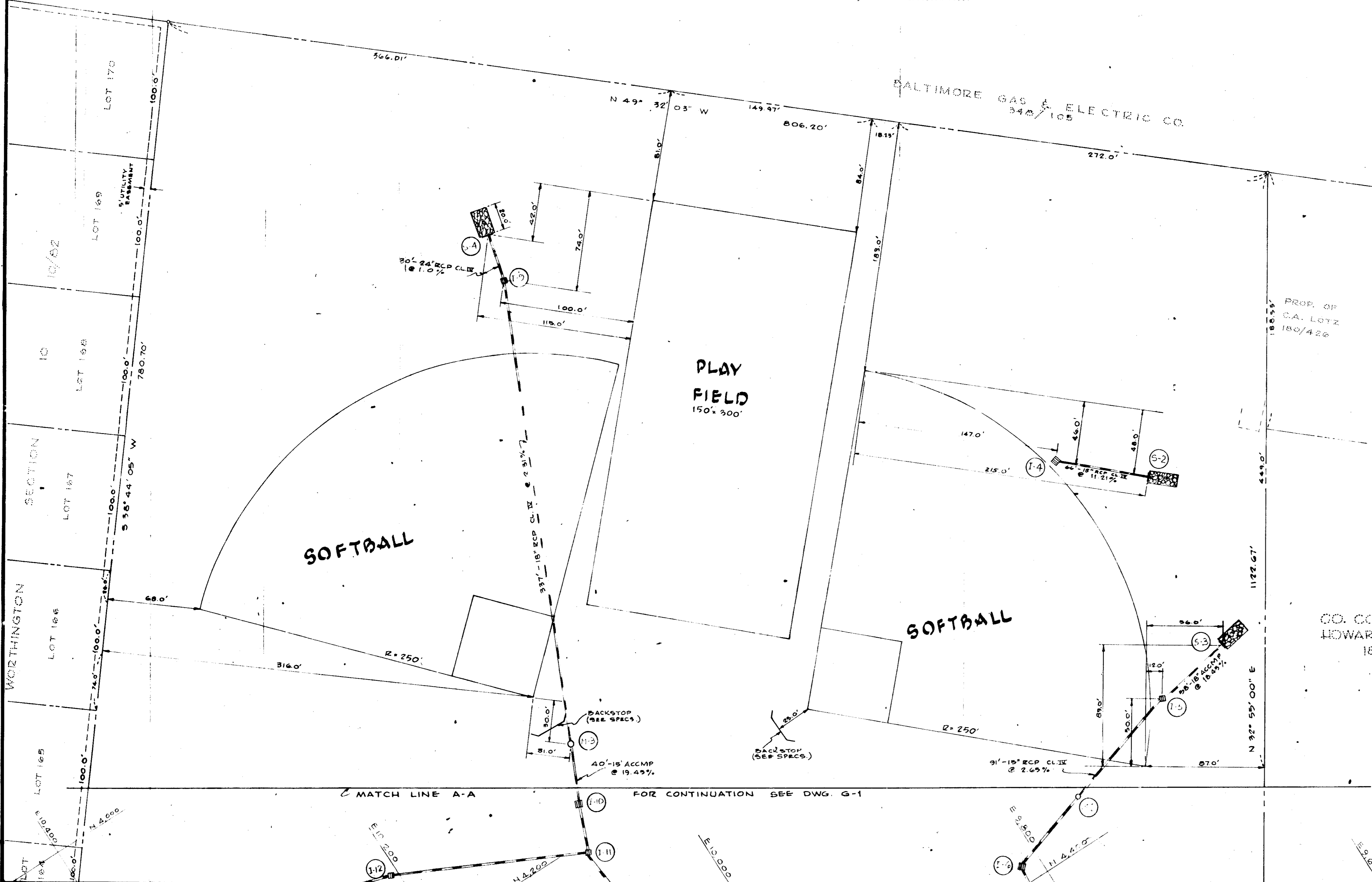
WORTHINGTON ELEMENTARY SCHOOL
 LAYOUT PLAN
 HOWARD COUNTY, MARYLAND
 SHEET NO. G-1
 OF SHEETS

1967 ASDP 75-41



PAVING NOTES

1. All paving to be constructed in accordance with the Howard County Road Construction Code and Specifications.
2. Subgrade shall be primed in accordance with Section C-30-3 of the Howard County Road Construction Code.
3. Bituminous Concrete Base Course shall receive a Tack Coat in accordance with Section C-31-4 of the Howard County Road Construction Code.
4. Paved Play Areas shall be similar to the above, but with a 3 inch (3") Bituminous Concrete Base Course in lieu of 4".
5. Concrete Sidewalks to be constructed in accordance with Article C-35 of the Howard County Road Construction Code.



Reviewed for H. S. C.D. Name
 and meets Technical Requirements
 Signature [Signature] Date 2-27-75
 M. S. Soil Conservation Service
 THIS DEVELOPMENT PLAN IS APPROVED
 FOR SOIL EROSION AND SEDIMENT
 CONTROL BY THE HOWARD SOIL
 CONSERVATION DISTRICT
 Approved [Signature] Date 2-27-75
 Howard S.C.D.

APPROVED FOR PUBLIC WATER AND PUBLIC SEWERAGE SYSTEMS, HOWARD COUNTY HEALTH DEPARTMENT	
COUNTY HEALTH OFFICER	DATE
APPROVED, HOWARD COUNTY OFFICE OF PLANNING AND ZONING	DATE
PLANNING DIRECTOR	DATE
CHIEF DIVISION OF LAND DEVELOPMENT AND TRANSPORTATION PLANNING	DATE
APPROVED FOR PUBLIC WATER PUBLIC SEWER AND STORM DRAINAGE SYSTEMS AND ROADS HOWARD COUNTY DEPARTMENT OF PUBLIC WORKS	DATE
DIRECTOR	DATE
CHIEF BUREAU OF HIGHWAYS	DATE

CO. COMM. OF HOWARD COUNTY
 180/339

SCALE: 1" = 40'

REFER TO DWGS G-1 FOR LEGEND

REV. DATE - 12/16/74 - TO MEET COUNTY REQUIREMENTS

ASSOCIATED ENGINEERS, INC.
 SITE ENGINEERS
 8555 SILVER SPRING STREET
 SILVER SPRING, MARYLAND 20910
 TEL. 301-5827311

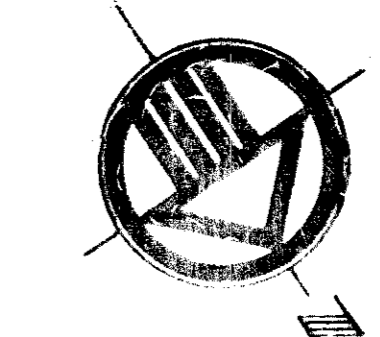
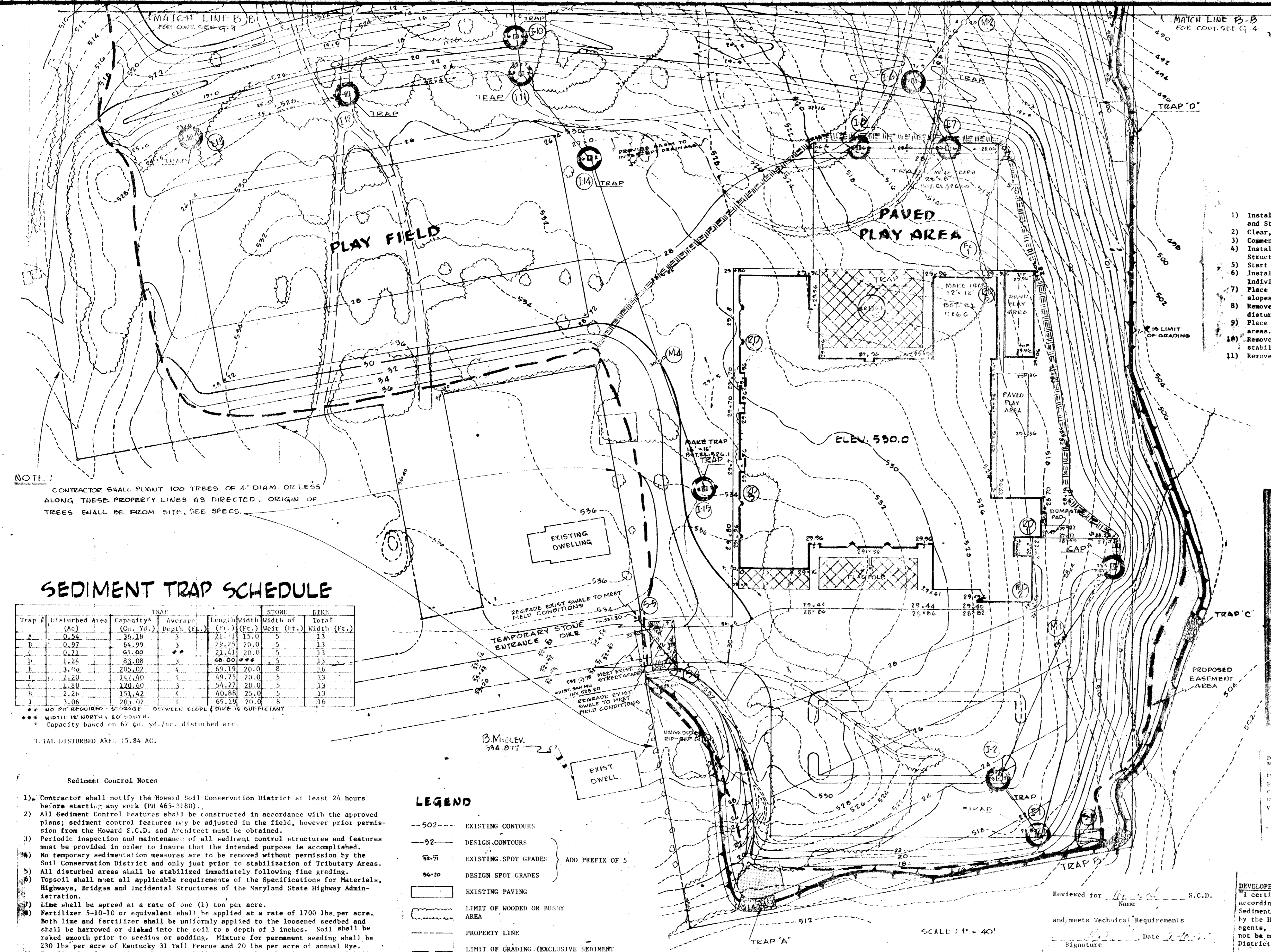
BOARD OF EDUCATION
 HOWARD COUNTY, MD.
 8054 Route 32
 CLARKSVILLE, MD. 21029

**WORTHINGTON
 ELEMENTARY SCHOOL
 2ND ELECTION DISTRICT
 HOWARD COUNTY,
 MARYLAND**

COMD No. 1826
 DRAWN BY: A.P.
 CHECKED BY: H.E.
 DATE: 11-11-74
 SHEET No. **G-2**
 OF SHEETS

LAYOUT PLAN

1967 A



- Construction Schedule
- 1) Install Stone Entrance and Earth Perimeter Dikes. Compact Earth Dikes and Stabilize. Install Sediment Traps A through I.
 - 2) Clear, Grub and Strip Topsoil.
 - 3) Commence Grading Operations.
 - 4) Install Storm Drainage and provide individual Structure Traps or Cap Structure as required.
 - 5) Start Building Construction.
 - 6) Install Curb and Gutter and place Base Course for paving after removing Individual Traps of Structures affected.
 - 7) Place temporary Straw Bales and begin stabilization of play area and slopes.
 - 8) Remove Dikes and Traps serving stabilized play area and stabilize areas disturbed.
 - 9) Place paving Surface Course and stabilize all remaining disturbed unpaved areas.
 - 10) Remove remaining Traps and Dikes after all tributary areas are stabilized, stabilize disturbed Trap and Dike areas and clean up construction area.
 - 11) Remove Straw Bales and stabilize disturbed areas.

NOTE:
CONTRACTOR SHALL PLANT 100 TREES OF 4" DIAM. OR LESS ALONG THESE PROPERTY LINES AS DIRECTED. ORIGIN OF TREES SHALL BE FROM SITE. SEE SPECS.

SEDIMENT TRAP SCHEDULE

Trap #	Disturbed Area (Ac)	Capacity* (Cu. Yd.)	TRAP	STONE	DIKE
			Average Depth (Ft.)	Length (Ft.)	Width of Total (Ft.)
A	0.54	36.18	3	21.71	15.0
B	0.97	64.99	3	29.25	20.0
C	0.71	41.06	3	22.43	20.0
D	1.25	83.08	4	40.00	20.0
E	3.52	235.02	4	65.19	20.0
F	2.20	147.40	4	49.75	20.0
G	1.80	120.60	3	54.27	20.0
H	2.26	151.42	4	40.88	25.0
I	2.00	135.02	3	65.19	20.0

* Capacity based on 67 cu. yd./ac. disturbed area.
TOTAL DISTURBED AREA 15.84 AC.

Sediment Control Notes

- 1) Contractor shall notify the Howard Soil Conservation District at least 24 hours before starting any work (PH 465-3180).
- 2) All Sediment Control Features shall be constructed in accordance with the approved plans; sediment control features may be adjusted in the field, however prior permission from the Howard S.C.D. and Architect must be obtained.
- 3) Periodic inspection and maintenance of all sediment control structures and features must be provided in order to insure that the intended purpose is accomplished.
- 4) No temporary sedimentation measures are to be removed without permission by the Soil Conservation District and only just prior to stabilization of Tributary Areas.
- 5) All disturbed areas shall be stabilized immediately following fine grading.
- 6) Topsoil shall meet all applicable requirements of the Specifications for Materials, Highways, Bridges and Incidental Structures of the Maryland State Highway Administration.
- 7) Lime shall be spread at a rate of one (1) ton per acre.
- 8) Fertilizer 5-10-10 or equivalent shall be applied at a rate of 1700 lbs. per acre. Both lime and fertilizer shall be uniformly applied to the loosened seedbed and shall be harrowed or disked into the soil to a depth of 3 inches. Soil shall be raked smooth prior to seeding or sodding. Mixture for permanent seeding shall be 230 lbs per acre of Kentucky 31 Tall Fescue and 20 lbs per acre of annual Rye.
- 9) Immediately after seeding the areas shall be uniformly mulched at a rate of 3000 lbs/acre, anchored with 480 gal/acre, Swales having a grade steeper than 2% the mulch shall be overlaid with plastic or fiber netting stapled to the ground according to the manufacturer's recommendations.
- 10) For sodded areas the sod shall be laid to a tight fit and rolled in order to knit to the soil. Sodded areas shall be watered for up to 2 weeks to ensure rooting to the soil below. Sod on slopes 3 to 1 and steeper shall be pegged.
- 11) Temporary berms and dikes shall be compacted by several passes with the construction equipment. Berms and dikes shall be stabilized immediately by using the following rates: 1 ton of lime per acre, 500 lbs of 5-10-10 fertilizer per acre, 1.5 tons of mulch and 40 lbs of Rye grass per acre.

LEGEND

- 502- EXISTING CONTOURS
- 32- DESIGN CONTOURS
- 21.71 EXISTING SPOT GRADES ADD PREFIX OF 5
- 29.25 DESIGN SPOT GRADES
- EXISTING PAVING
- LIMIT OF WOODED OR BUSHY AREA
- PROPERTY LINE
- LIMIT OF GRADING (EXCLUSIVE SEDIMENT CONTROL)
- TEMP. EARTH INTERCEPTOR DIKE -SEE DETAIL G-4
- TEMP. STONE OUTFALL -SEE DETAIL G-4
- TEMP. SEDIMENT TRAP -SEE DETAIL G-4
- TRAP FOR STRUCTURE -SEE DETAIL G-4
- CAP FOR STRUCTURE -SEE DETAIL G-4
- SOD; ALSO SEE NOTE #4 GENERAL NOTES - G-1
- STRAW BALES TO BE SECURELY ANCHORED
- TEMPORARY STONE ENTRANCE DIKE

GRADING NOTES

1. Existing contours based on Aerial Survey flown by Photo Science, Inc., on Jan. 13, 1974. Control points set by Associated Engineers, Inc., B. M. used: S. E. Corners of first step of side door of House #4575 on lot 175 at N. W. end of Round Hill Road. Elev. 534.877.
2. The level of the play fields may be adjusted in order to balance all suitable fill material on site. Cross slope of fields, however, must be maintained as shown and Architect's approval must be obtained prior to adjusting levels of fields. (See Specs.).
3. All fill to be compacted in accordance with Specs.
4. Fitch gutter away from curb where required by drainage pattern of adjacent paving.

Reviewed for _____ S.C.D.
Name _____
and meets Technical Requirements
Signature _____ Date _____
U. S. Soil Conservation Service

THIS DEVELOPMENT PLAN IS APPROVED FOR SOIL EROSION AND SEDIMENT CONTROL BY THE HOWARD SOIL CONSERVATION DISTRICT
Approved _____ Date _____
Howard S.C.D.

DEVELOPER'S CERTIFICATION
"I certify that this plan for Erosion and Sediment Control represents a practical and workable plan based on my personal knowledge of the site conditions and that it was prepared in accordance with the requirements of the Howard Soil Conservation District."
Date _____

TOTAL AREA OF SITE = 19.7³ AC.
AREA PAVED OR ROOFED = 2.9³ AC.
AREA TO BE SEEDED OR SODDED = 130³ AC.
AREA TO REMAIN UNDISTURBED = 3.8 AC.

APPROVED BY THE BOARD OF PUBLIC WORKS AND PUBLIC UTILITIES
HOWARD COUNTY HEALTH DEPARTMENT
HEALTH OFFICER
APPROVED BY THE BOARD OF PUBLIC WORKS AND PUBLIC UTILITIES
HOWARD COUNTY HEALTH DEPARTMENT
HEALTH OFFICER
APPROVED BY THE BOARD OF PUBLIC WORKS AND PUBLIC UTILITIES
HOWARD COUNTY HEALTH DEPARTMENT
HEALTH OFFICER

ASSOCIATED ENGINEERS, INC.
1655 SIXTEENTH STREET
SILVER SPRING, MARYLAND 20910
TEL. 901-6887311

REVISIONS
REVISED TRAP CAP 2-11-75
REVISED SEDIMENT CONTROL 11-26-74

DATE 11-15-74

PROJECT No. G-3

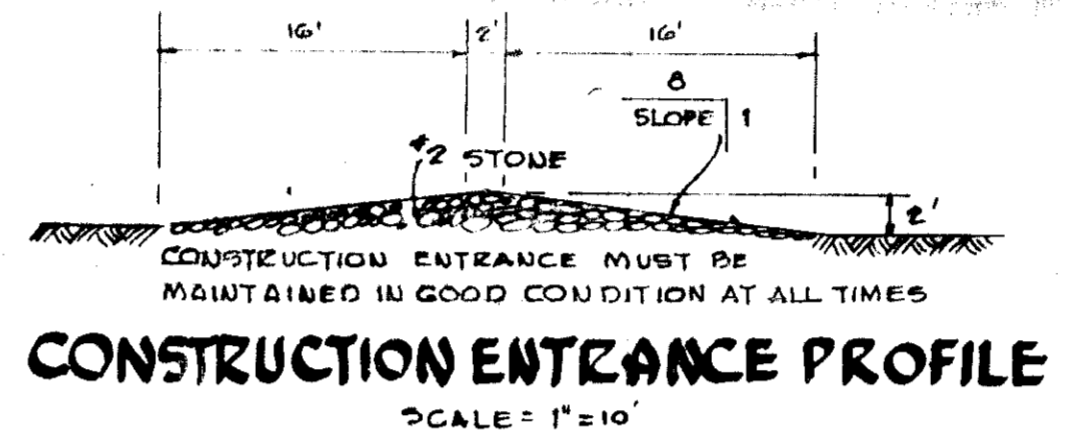
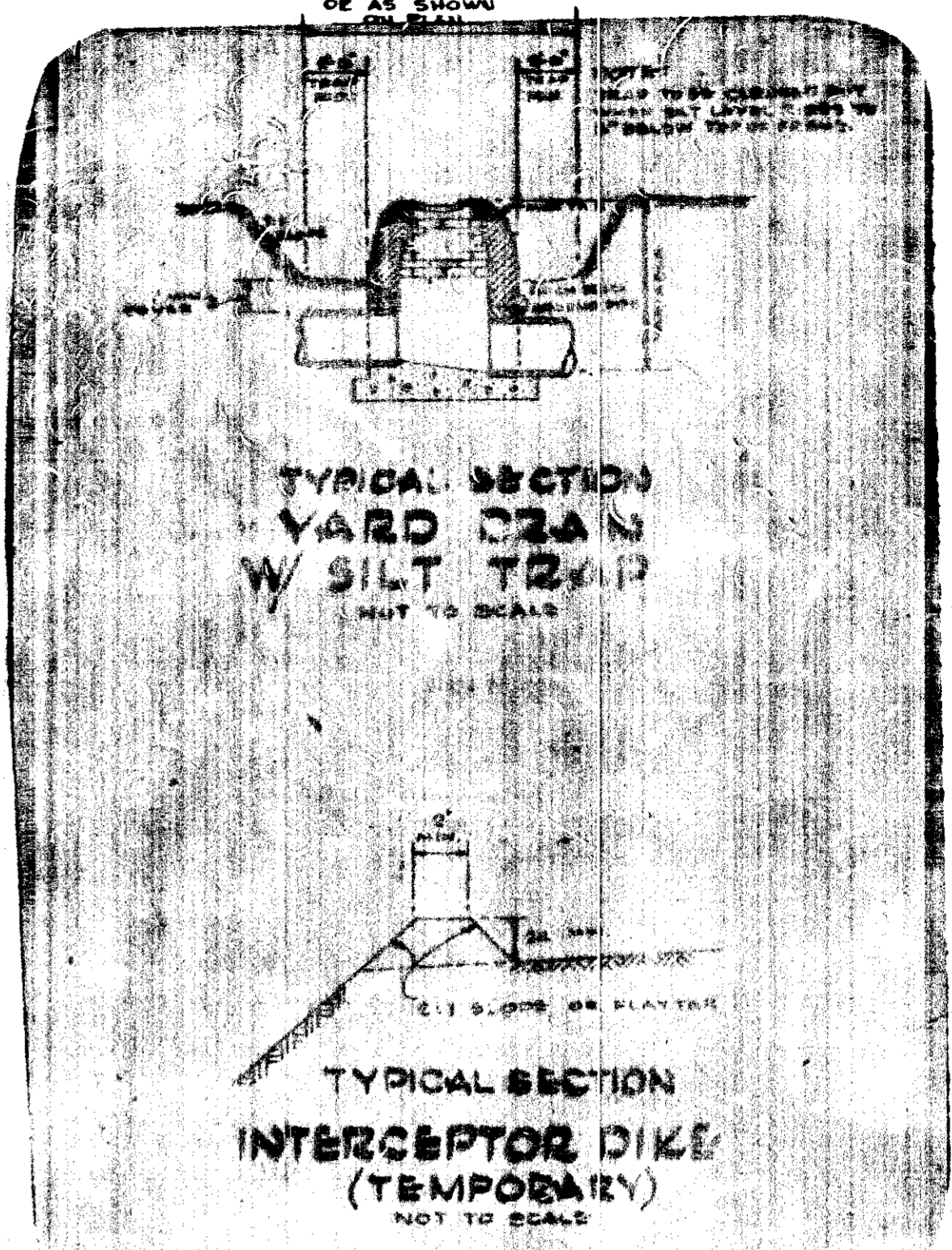
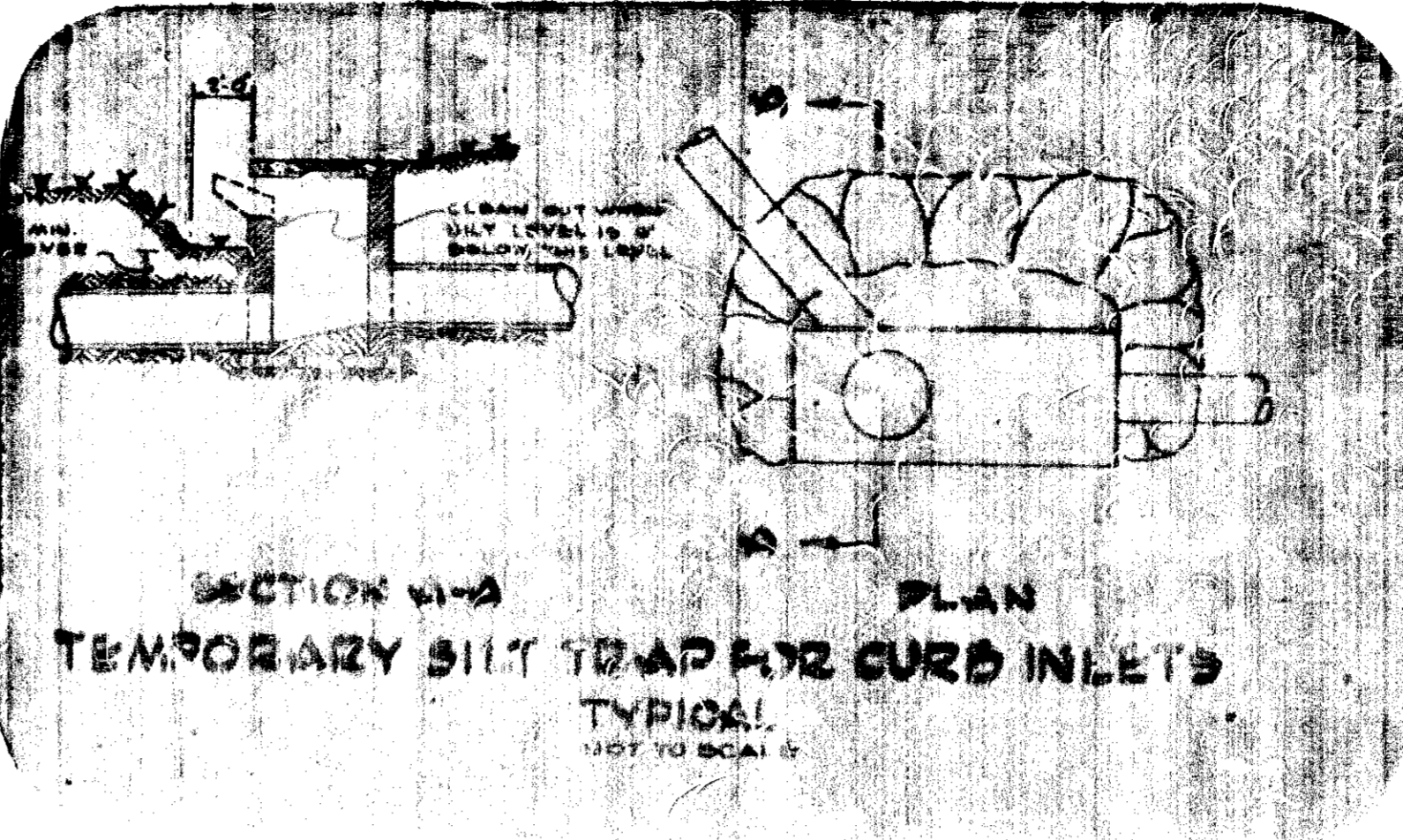
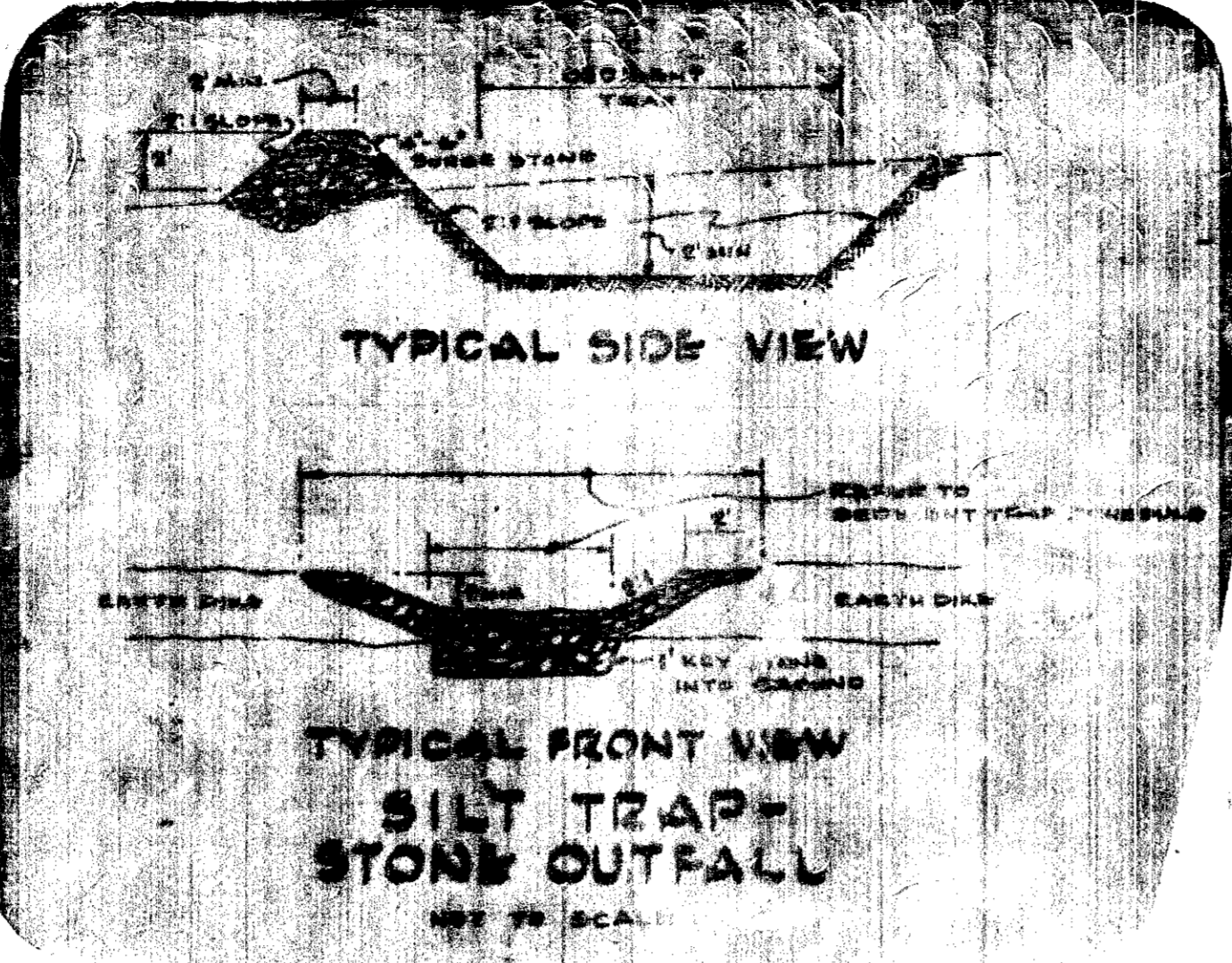
OF 3 SHEETS

ADDENDUM NO. 3

GRADING PLAN AND SEDIMENT CONTROL PLAN

WORTHINGTON ELEMENTARY SCHOOL
2ND ELECTION DISTRICT
HOWARD COUNTY, MARYLAND

ERIC TORRERA, ENGINEER
CHARTERED PROFESSIONAL ENGINEER
STATE OF MARYLAND



Reviewed For: *Howard S.C.D.*
Name: _____
and Meets Technical Requirements
[Signature] Date: *2-10-75*
Signature: _____
U. S. Soil Conservation Service
APPROVED
DIVISION OF LAND DEVELOPMENT AND RECONSTRUCTION PLANNING
APPROVED FOR SOIL EROSION AND SEDIMENT CONTROL BY THE HOWARD SOIL CONSERVATION DISTRICT
Approved: *[Signature]* Date: *2-10-75* Date: *2/21/75*
Howard S.C.D.

APPROVED FOR PUBLIC WATER AND PUBLIC SEWER SYSTEMS - HOWARD COUNTY HEALTH DEPARTMENT	DATE
COUNTY HEALTH OFFICER	DATE
APPROVED, HOWARD COUNTY OFFICE OF PLANNING AND ZONING	DATE
PLANNING DIRECTOR	DATE
OFFICE DIVISION OF LAND DEVELOPMENT AND RECONSTRUCTION PLANNING	DATE
APPROVED FOR PUBLIC WATER, PUBLIC SEWER AND OTHER TREATMENT SYSTEMS AND LEADS BONDARD COUNTY DEPARTMENT OF PUBLIC WORKS	DATE
DIRECTOR	DATE
CHIEF FOREMAN OF ALIQUANTS	DATE

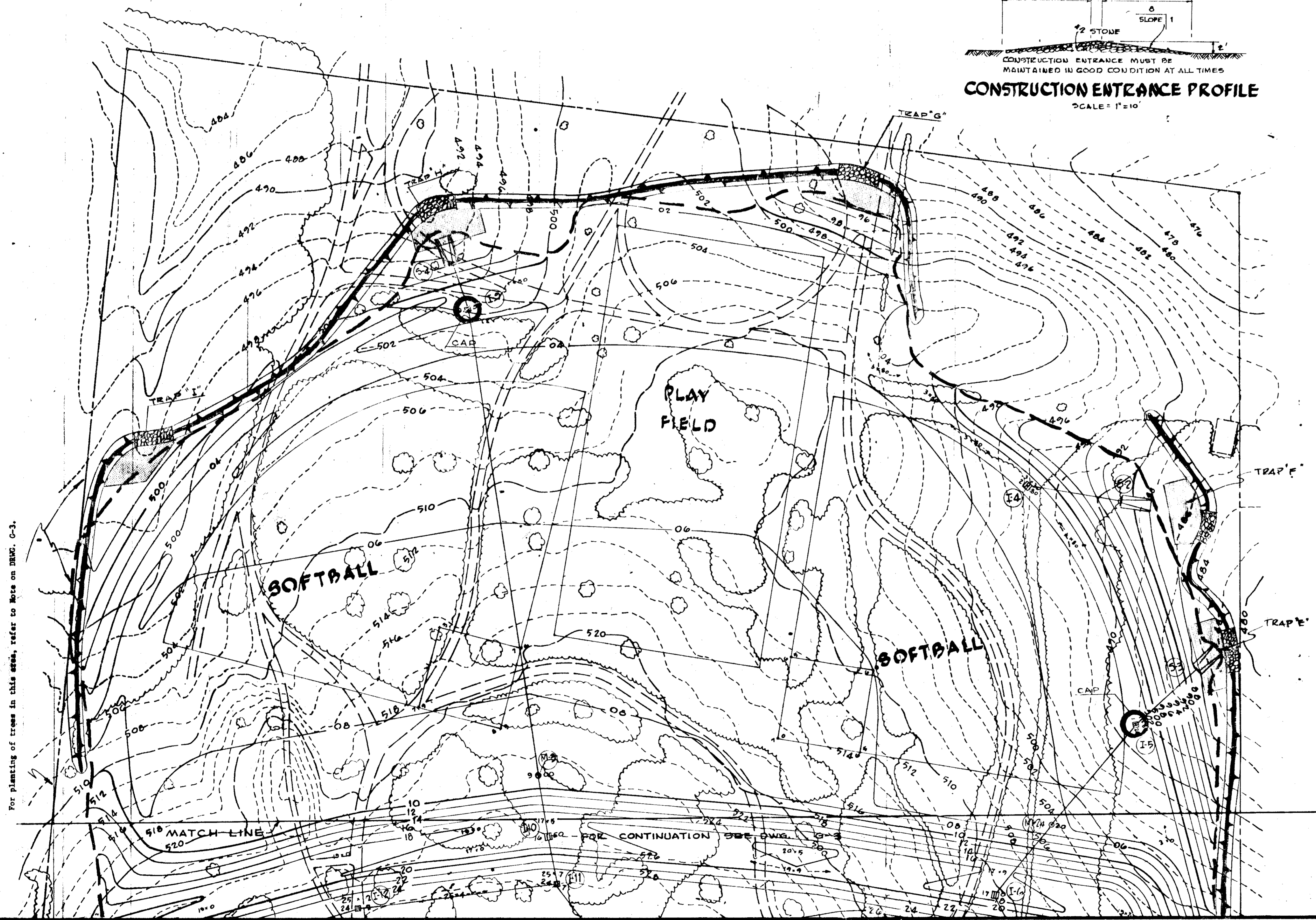
DESIGN CERTIFICATION
I certify that this plan for Erosion and Sediment Control represents a practical and workable plan based on my personal knowledge of the site conditions and that it was prepared in accordance with the requirements of the Howard Soil Conservation District.
[Signature] Date: *10-23-74*

DEVELOPER'S CERTIFICATION
I certify that all development and/or construction will be done according to this plan of development and plan for Erosion and Sediment Control and I also authorize periodic on-site inspection by the Howard County Soil Conservation District or their authorized agents, as are deemed necessary. Deviation from this plan will not be made unless authorized by the Howard Soil Conservation District.
Date: _____

SCALE: 1"=40'

REFER TO DWG G-3 FOR LEGEND

[Handwritten Signature]



For planting of trees in this area, refer to Note on DWG. G-3.

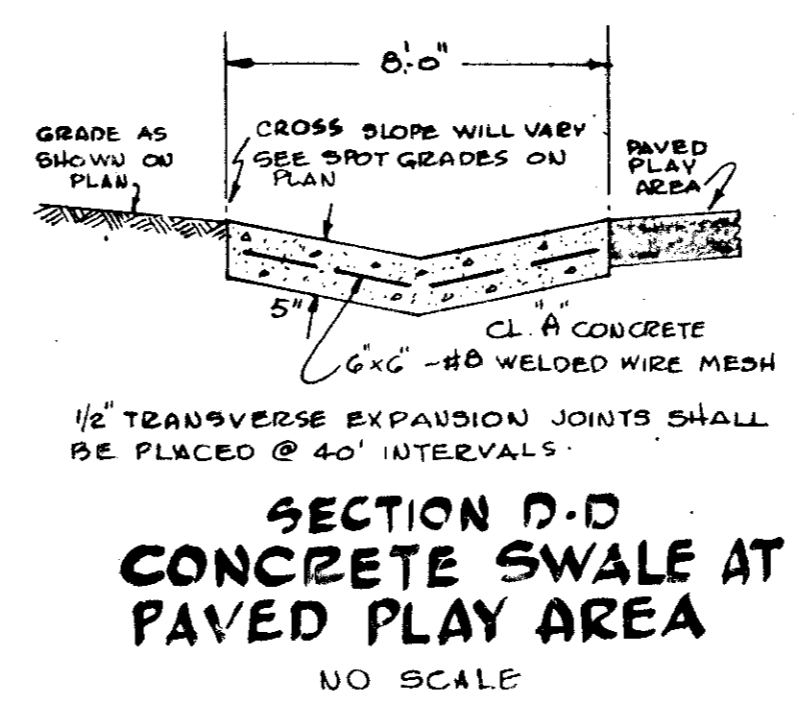
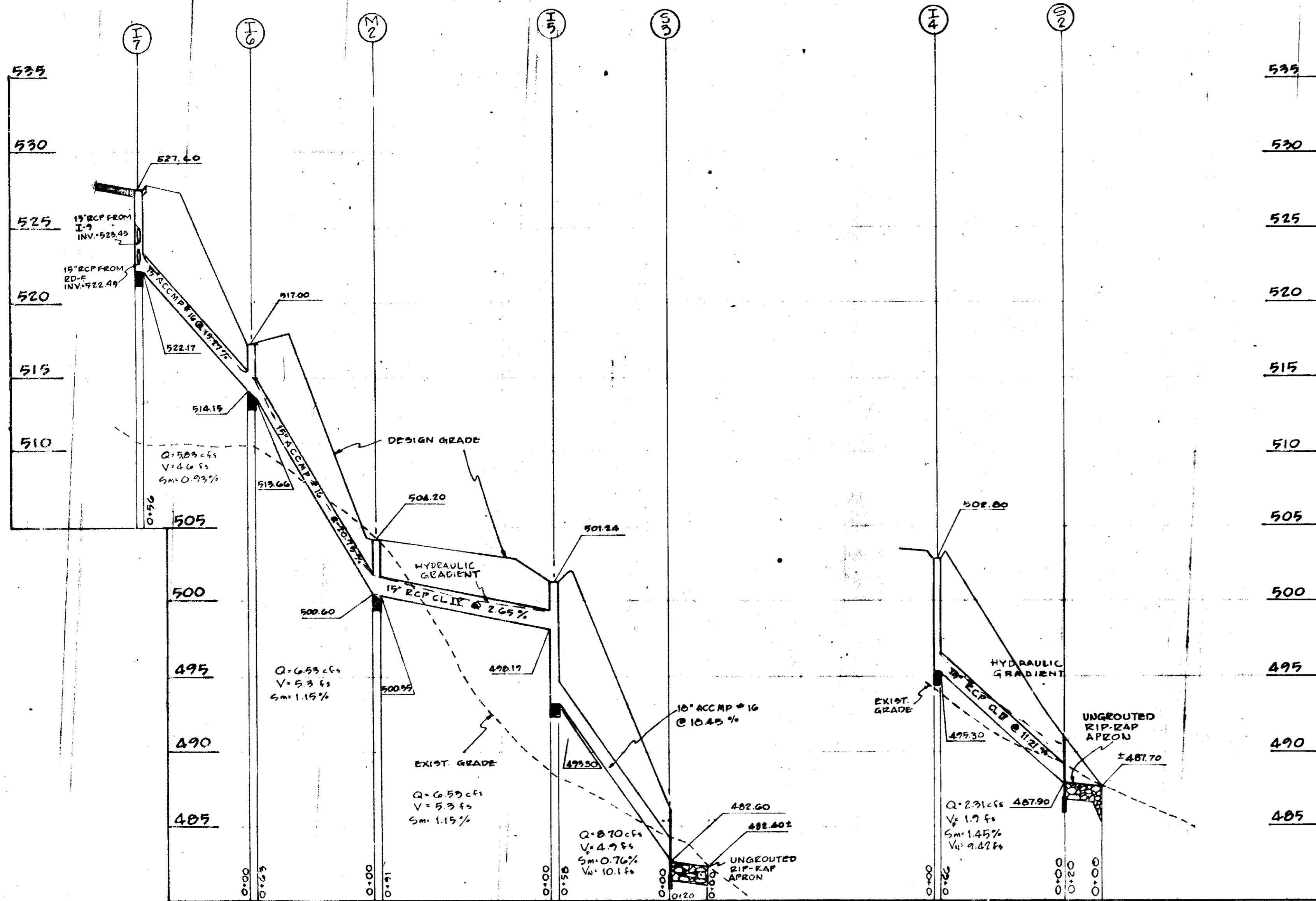
ASSOCIATED ENGINEERS, INC.
1000 SILVER SPRING STREET
SILVER SPRING, MARYLAND 20910
TEL. 301-581-1100

GRADING PLAN AND SEDIMENT CONTROL PLAN

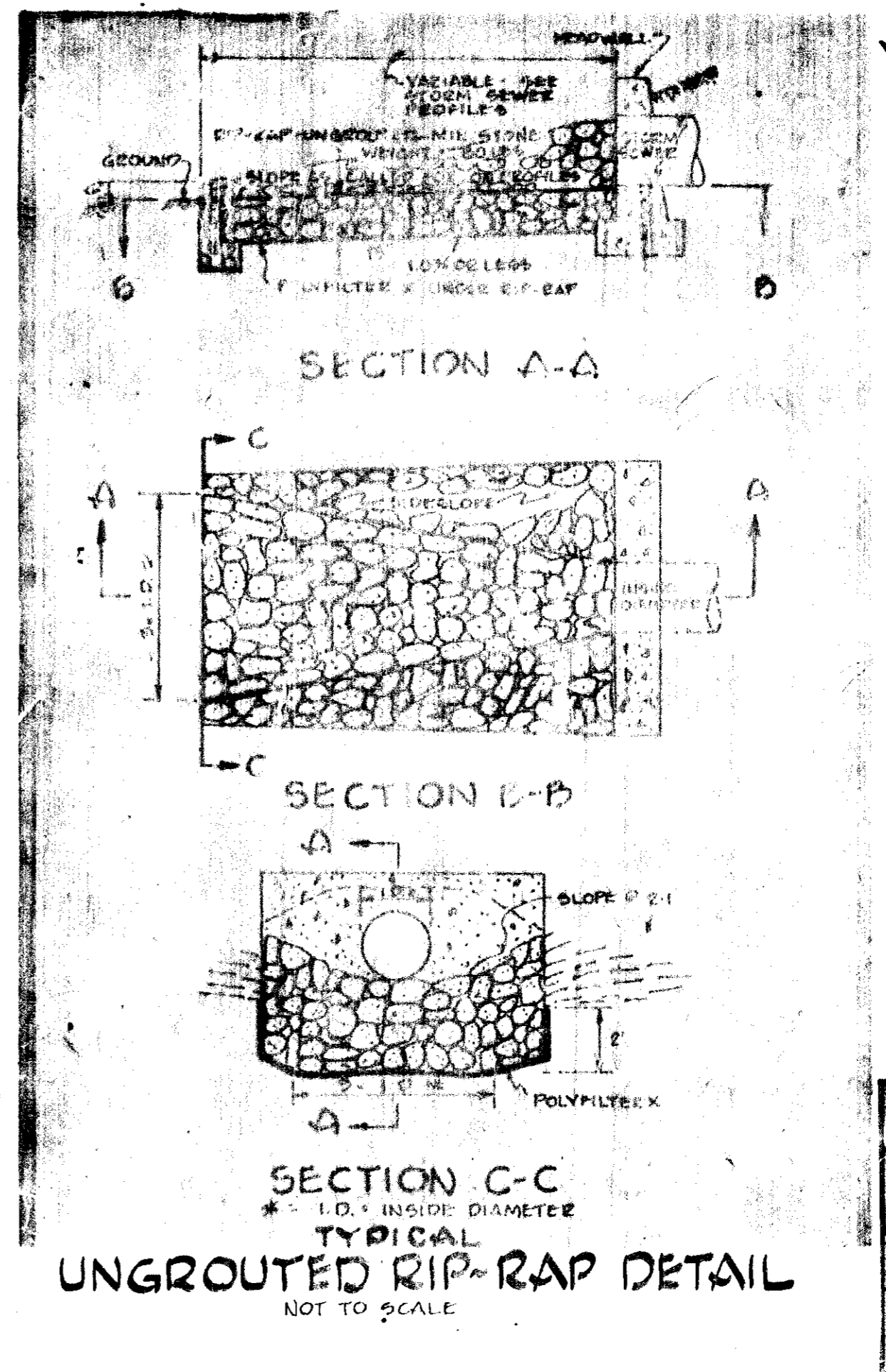
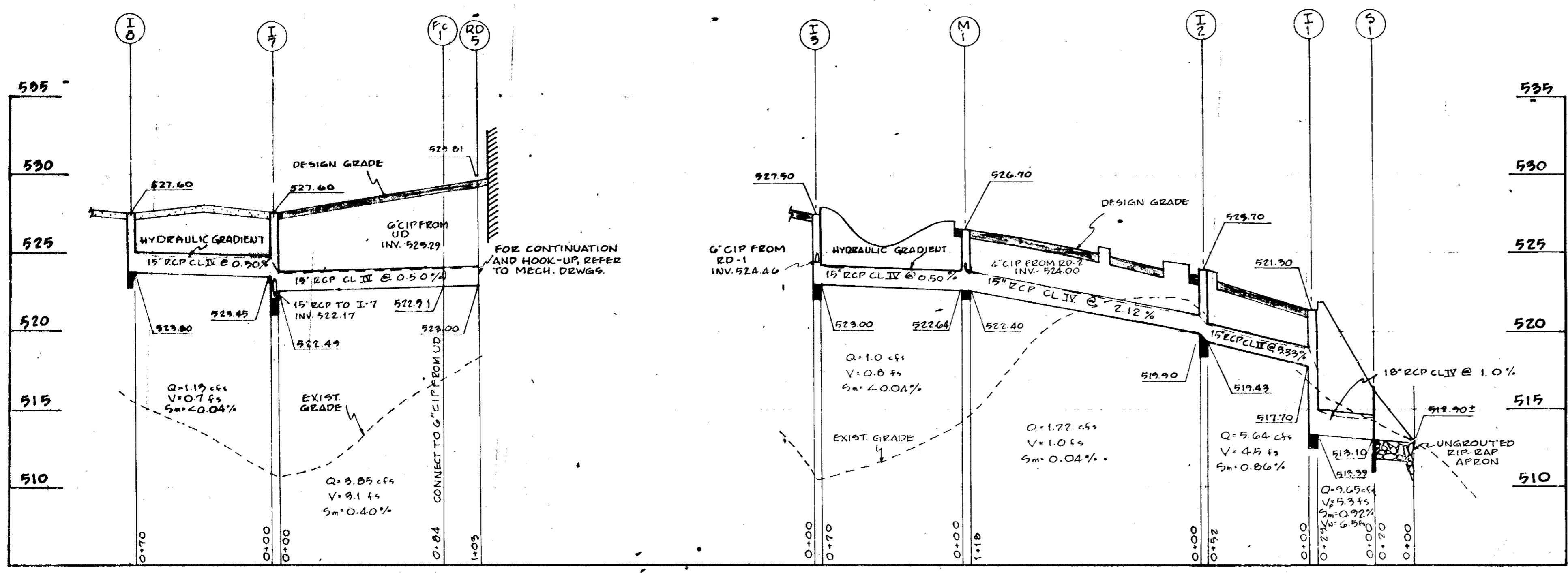
WORTHINGTON SCHOOL ELEMENTARY SCHOOL
2ND ELECTION DISTRICT
HOWARD COUNTY, MARYLAND

COMD No. 731P
DRAWN BY: A. D.
CHECKED BY: H. R.
DATE: 11-11-74
SHEET No. G-4 OF SHEETS

50075-11



STRUCTURE TABLE				
N°	TYPE	TOP ELEV.	INV. OUT.	REMARKS
S-1	B HEADWALL **	-	515.10	D.P.W. STD. SDD-21 FOR 18" PIPE
1-1	E COMB. INLET	521.30	515.59	D.P.W. STD. SDD-36
1-2	A-1 INLET	523.70	519.76	D.P.W. STD. SDD-29
M-1	A-3 MANHOLE	526.70	522.64	D.P.W. STD. SDD-8
1-3	E INLET	527.50	523.00	MSHA STD. MD-376.11
S-2	B HEADWALL **	-	487.90	D.P.W. STD. SDD-21 FOR 15" PIPE
1-4	YARD DRAIN	502.80	495.30	SEE DETAIL
S-3	B HEADWALL *	-	482.60	D.P.W. STD. SDD-21 FOR 18" PIPE
1-5	YARD DRAIN	501.24	495.90	SEE DETAIL
M-2	A-3 MANHOLE	504.20	500.35	D.P.W. STD. SDD-8
1-6	YARD DRAIN	517.00	513.66	SEE DETAIL
1-7	YARD DRAIN	527.60	522.59	SEE DETAIL
1-8	YARD DRAIN	527.60	523.80	SEE DETAIL
S-4	B HEADWALL **	-	495.80	D.P.W. STD. SDD-21 FOR 24" PIPE
1-9	S INLET	500.30	495.50	MSHA STD. MD-379.01
M-3	A-3 MANHOLE	509.00	504.77	D.P.W. STD. SDD-8
1-10	YARD DRAIN	516.50	512.55	SEE DETAIL
1-11	YARD DRAIN	524.70	519.02	SEE DETAIL
1-12	YARD DRAIN	524.20	520.09	SEE DETAIL
1-13	YARD DRAIN	524.00	520.95	SEE DETAIL
1-14	YARD DRAIN	526.20	521.15	SEE DETAIL
M-4	A-3 MANHOLE	530.00	522.94	D.P.W. STD. SDD-8
1-15	YARD DRAIN	528.25	523.86	SEE DETAIL
S-5	*HEADWALL	-	551.50	D.P.W. STD. SDD-25
S-6	FLARED END SECT.	-	529.60	MSHA STD. MD. 371.01



Received for Howard S.C.D.
 Name
 and meets Technical Requirements
 Date 2-10-75
 Signature
 H. S. Soil Conservation Service
 THIS DEVELOPMENT PLAN IS APPROVED FOR SOIL EROSION AND SEDIMENT CONTROL BY THE HOWARD SOIL CONSERVATION DISTRICT
 Approved Howard S.C.D. Date 2-10-75
 Howard S.C.D.

APPROVED FOR PUBLIC HEALTH AND PUBLIC BEVERAGE SYSTEMS, HOWARD COUNTY HEALTH DEPARTMENT
 COUNTY HEALTH OFFICER
 APPROVED, HOWARD COUNTY OFFICE OF PLANNING AND ZONING
 PLANNING DIRECTOR
 CHIEF DIVISION OF LAND DEVELOPMENT AND TRANSPORTATION PLANNING
 APPROVED FOR PUBLIC HEALTH, PUBLIC BEVERAGE AND STORM DRAINAGE SYSTEMS AND LOCAL BOARD COUNTY DEPARTMENT OF PUBLIC WORKS
 DIRECTOR
 CHIEF BUREAU OF HIGHWAYS

WORTHINGTON ELEMENTARY SCHOOL
 2ND ELECTION DISTRICT
 HOWARD COUNTY, MARYLAND

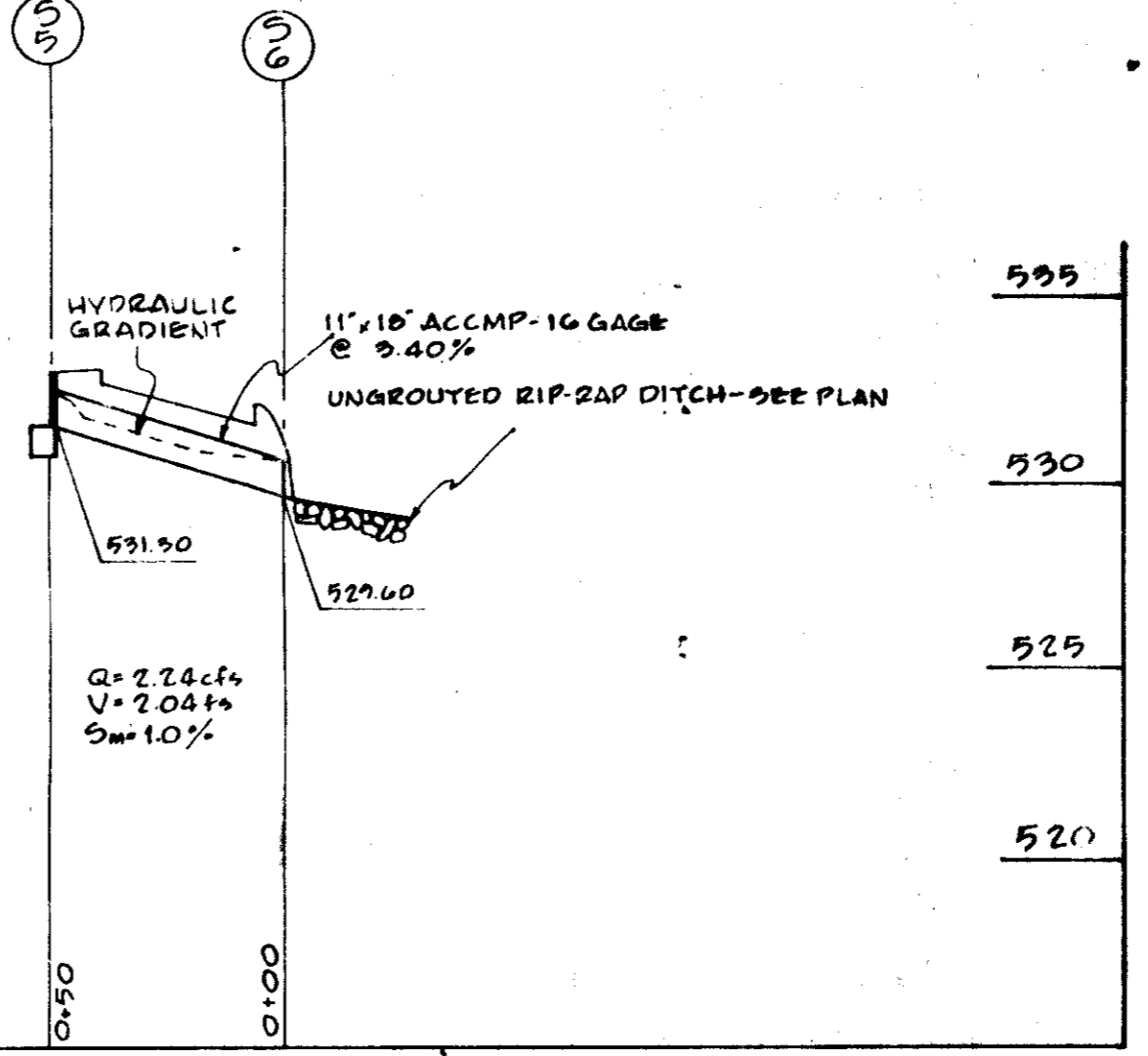
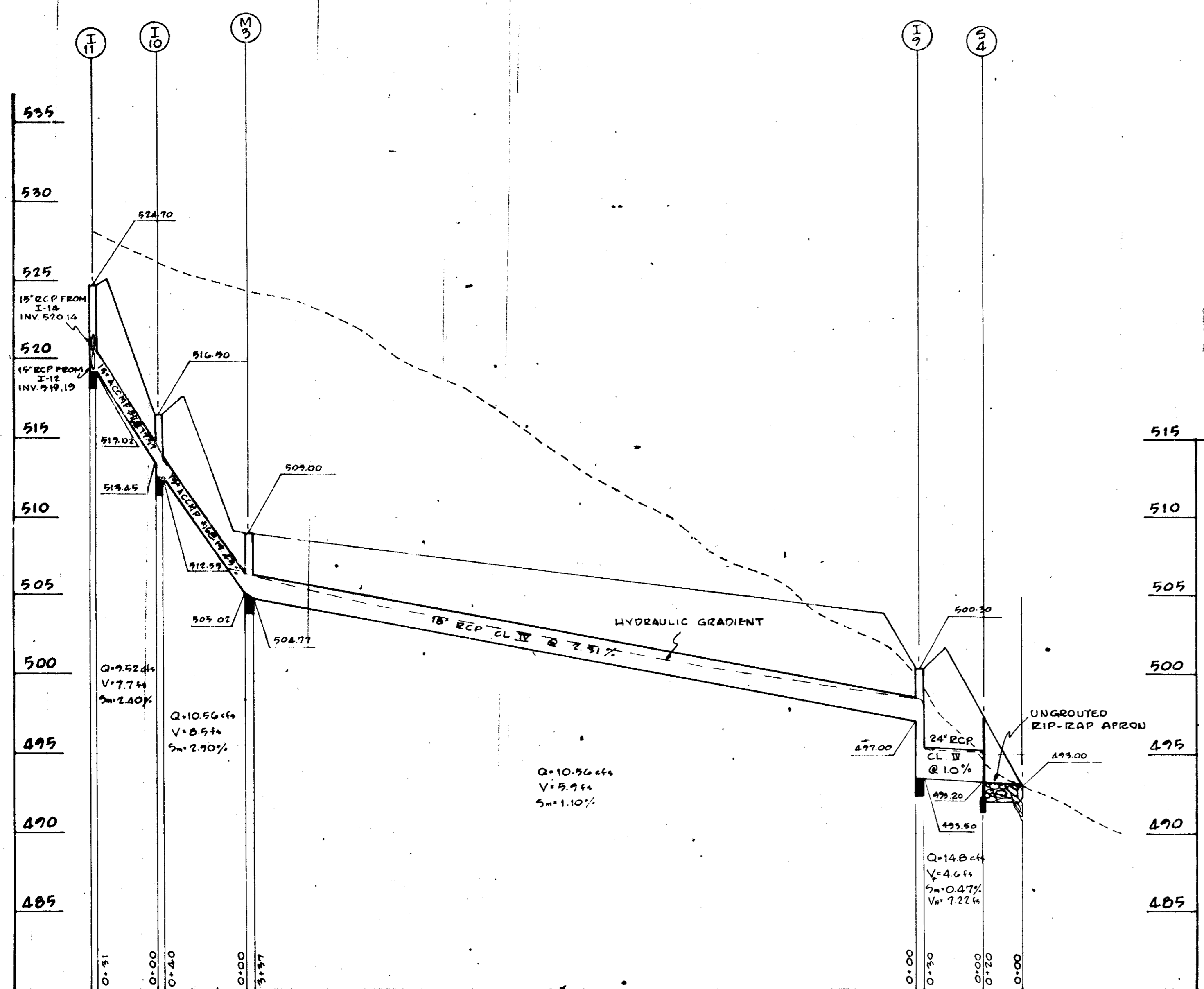
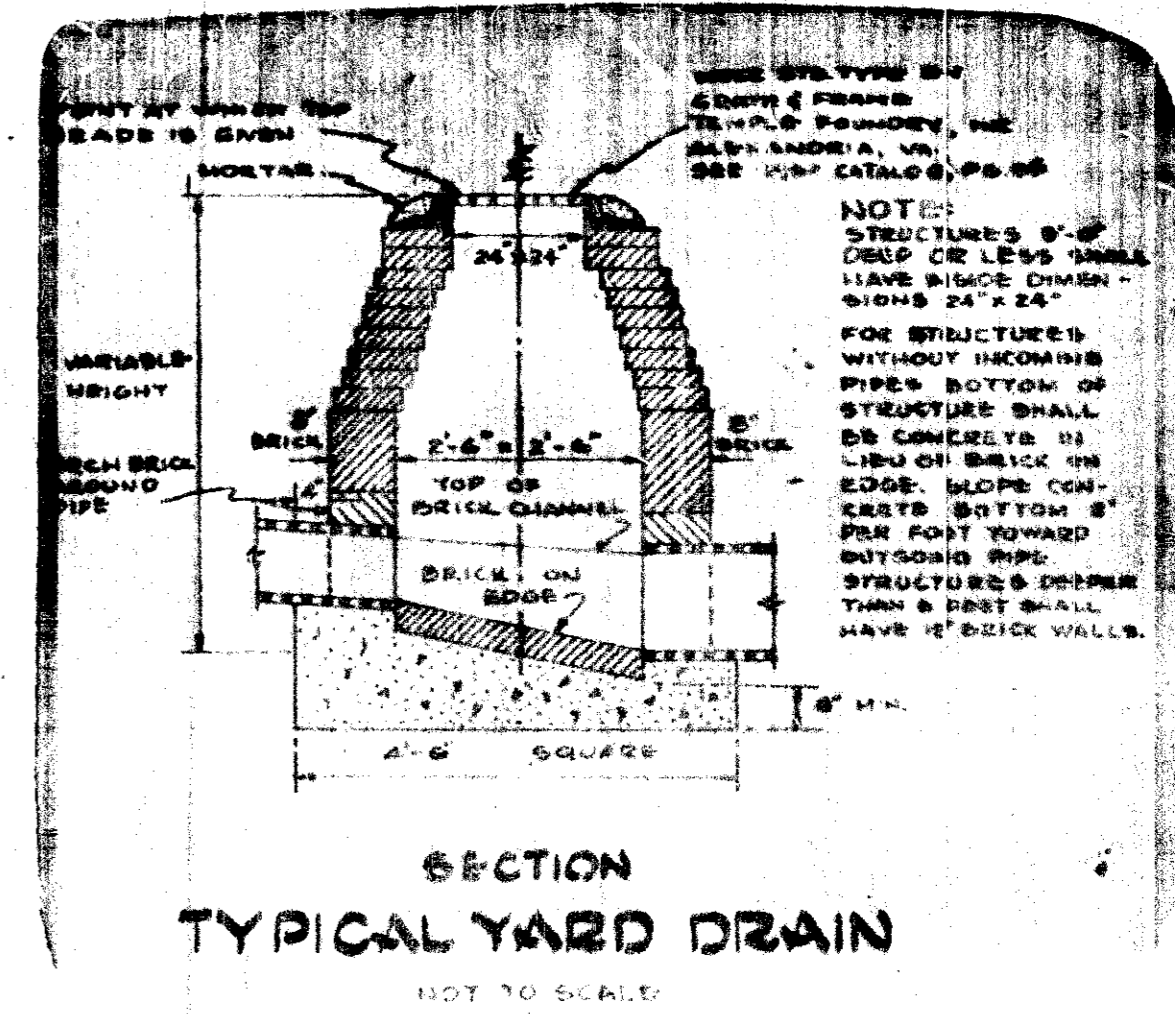
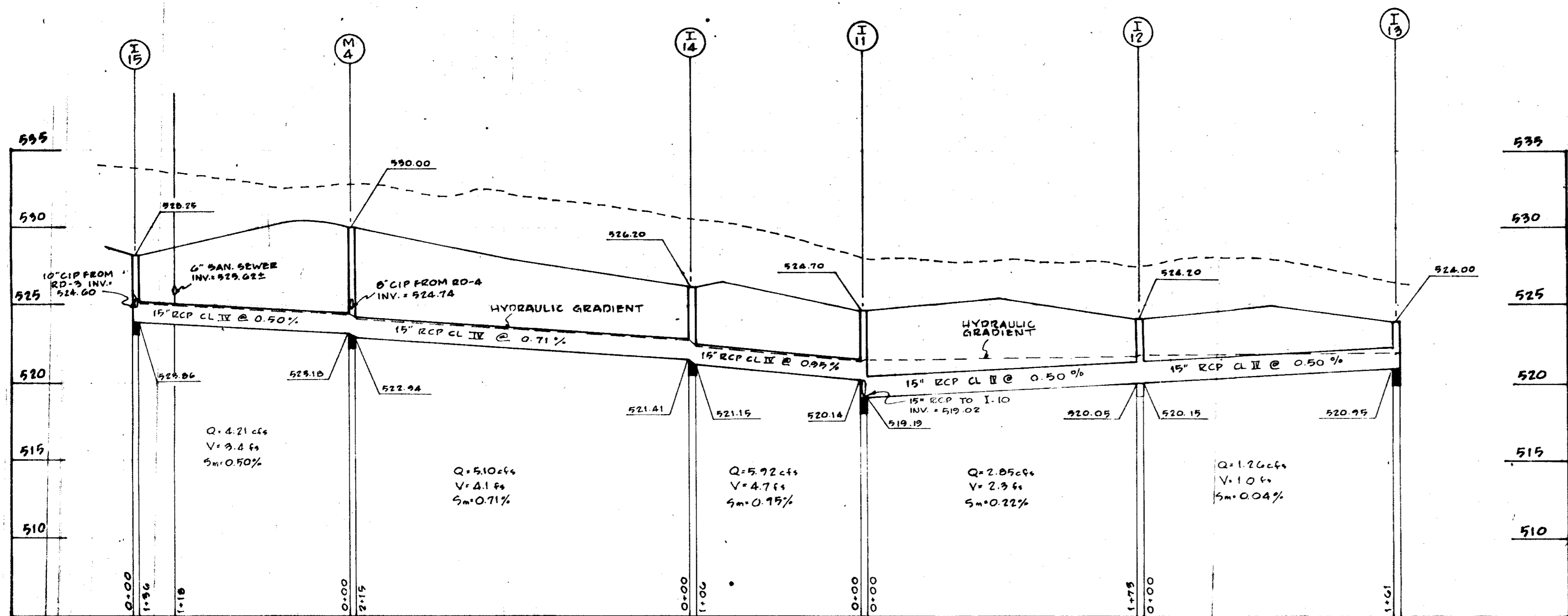
STORM SEWER PROFILES & DETAILS

REV. DATE - 12/14/74 TO MEET COUNTY REQUIREMENTS

MCLEOD FERRARA, ENSIGN ARCHITECTS
 301 1687 - 2778
 STRUCTURAL ENGINEERS
 ELECTRICAL ENGINEERS
 CIVIL ENGINEERS

SCALE: HOR - 1" = 40'
 VER - 1" = 5'

1967 A



SCALE: HOR. - 1" = 40'
VER. - 1" = 5'

APPROVED FOR PUBLIC WATER AND PUBLIC SEWERAGE SYSTEMS, HOWARD COUNTY HEALTH DEPARTMENT	DATE
COUNTY HEALTH OFFICER	DATE
APPROVED, HOWARD COUNTY OFFICE OF PLANNING AND ZONING	DATE
PLANNING DIRECTOR	DATE
CHIEF DIVISION OF LAND DEVELOPMENT AND TRANSPORTATION PLANNING	DATE
APPROVED FOR PUBLIC WATER PUBLIC SEWER AND STORM DRAINAGE SYSTEMS AND HOWARD COUNTY DEPARTMENT OF PUBLIC WORKS	DATE
CHIEF BUREAU OF HIGHWAYS	DATE

Reviewed for Health S.C.D.
Name
and meets Technical Requirements
Signature Howard S. Goff Date 2-10-75
U. S. Soil Conservation Service
THIS DEVELOPMENT PLAN IS APPROVED FOR SOIL EROSION AND SEDIMENT CONTROL BY THE HOWARD SOIL CONSERVATION DISTRICT
Approved Howard S. Goff Date 2-10-75
Howard S. Goff

McLEOD, FERRARA, ENSIGN
ARCHITECTS
STRUCTURAL ENGINEERS
MECHANICAL & ELECTRICAL ENGINEERS
SITE ENGINEERS

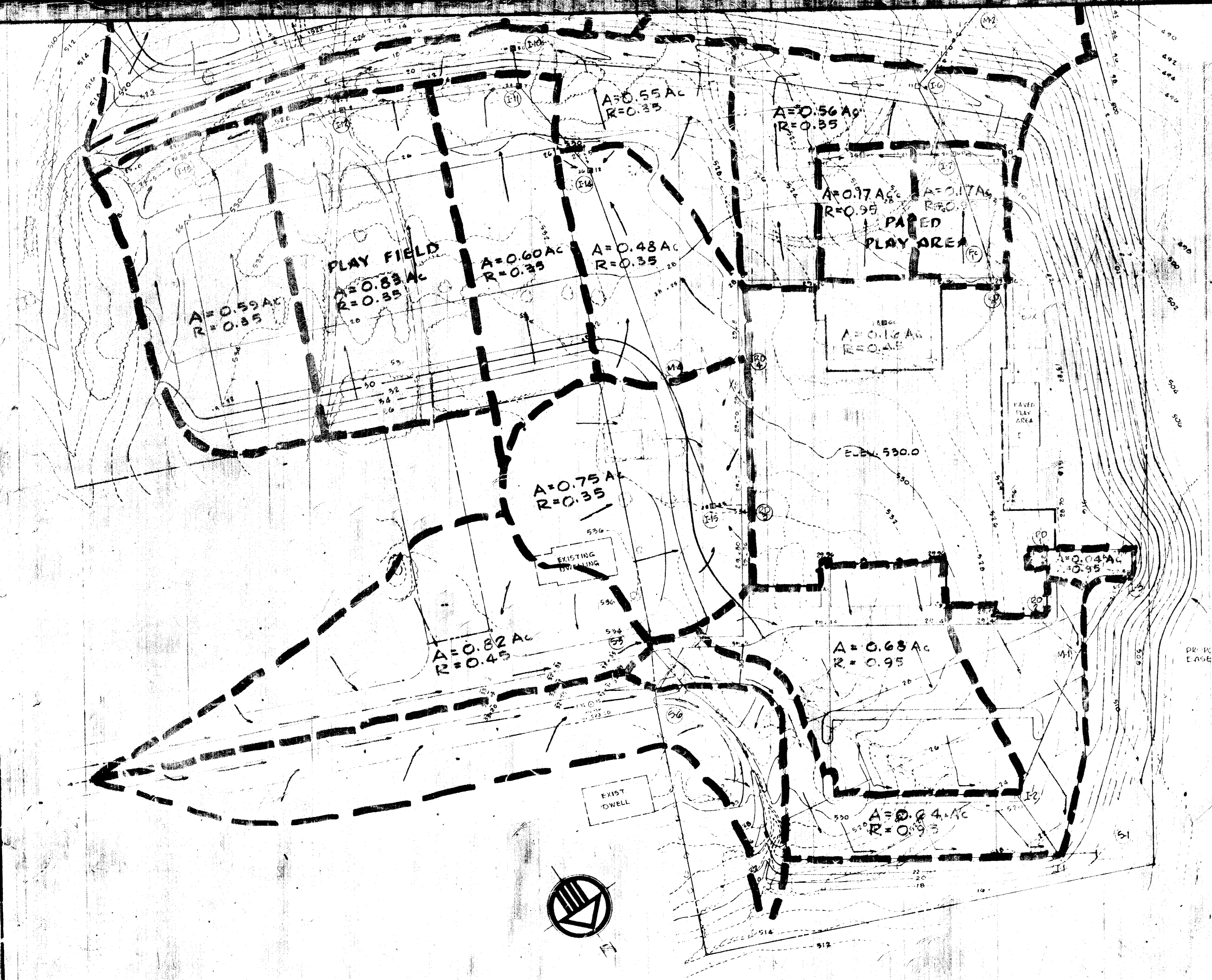
STORM SEWER PROFILES
& DETAILS

WORTHINGTON
ELEMENTARY SCHOOL
2ND ELECTION DISTRICT
HOWARD COUNTY, MARYLAND

COMM. No. 7518
DRAWN BY: A.D.
CHECKED BY: H.R.
DATE: 11-11-74
SHEET No. G-6
OF SHEETS

1967 A

SDP75-41



THIS DEVELOPMENT PLAN IS APPROVED FOR SOIL EROSION & SEDIMENT CONTROL BY THE HOWARD SOIL CONSERVATION DIST.
 REVIEWED: *[Signature]* DATE: 2-10-75
 DIST. CONSERVATIONIST
 APPROVED: *[Signature]* DATE: 2-13-75
 HOWARD SOIL CONSERVATION DIST.

APPROVED FOR PUBLIC WATER AND PUBLIC SEWERAGE SYSTEMS, HOWARD COUNTY HEALTH DEPARTMENT
[Signature] DATE: *[Signature]*
 COUNTY HEALTH OFFICER
 APPROVED, HOWARD COUNTY OFFICE OF PLANNING AND ZONING
Thomas J. Harris DATE: 2-27-75
 PLANNING DIRECTOR
[Signature] DATE: 2/27/75
 CHIEF DIVISION OF LAND DEVELOPMENT TRANSPORTATION PLANNING
 APPROVED FOR PUBLIC WATER, PUBLIC SEWER AND STORM DRAINAGE SYSTEMS AND ROADS, HOWARD COUNTY DEPARTMENT OF PUBLIC WORKS
[Signature] DATE: 2-20-75
 DIRECTOR
[Signature] DATE: 2/18/75
 CHIEF BUREAU OF HIGHWAYS

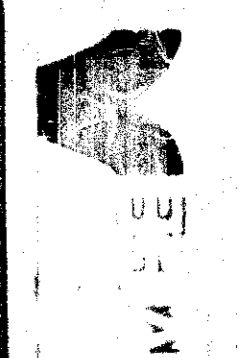
ASSOCIATED ENGINEERS, INC.
 6339 SIXTY-NINTH STREET
 SILVER SPRING, MARYLAND 20916
 TEL. 301-988-7311

DEPARTMENT OF LAND DEVELOPMENT AND TRANSPORTATION PLANNING
[Signature] DATE: 2/27/75

SCALE: 1"=40'

[Signature]

MCLEOD FERRARA ENSIGN
 3447 WOODBURN AVENUE, APT. 2016
 CHEVY CHASE, MARYLAND 20815
 301-942-2775

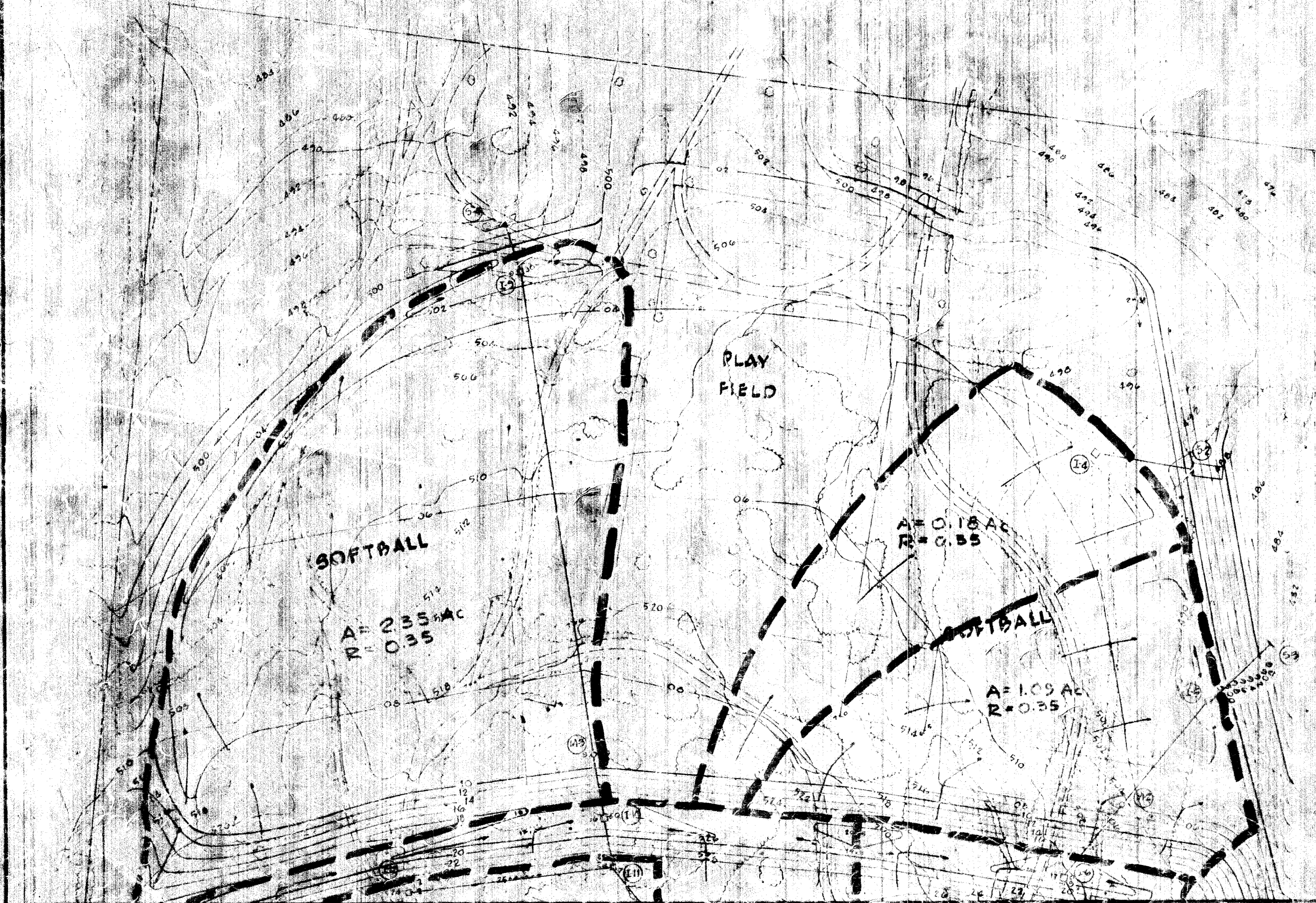


DRAINAGE DIVIDES

WORTHINGTON ELEMENTARY SCHOOL
 HOWARD COUNTY, MARYLAND

DATE: _____
 DRAWN BY: _____
 CHECKED BY: _____
 SHEET NO. DD-1

SDP 75-41



THIS DEVELOPMENT PLAN IS APPROVED FOR SOIL EROSION & SEDIMENT CONTROL BY THE HOWARD SOIL CONSERVATION DIST.
 REVIEWED: *[Signature]* DATE: 2-10-75
 DIST. CONSERVATIONIST
 APPROVED: *[Signature]* DATE: 2-10-75
 HOWARD SOIL CONSERVATION DIST.

APPROVED FOR PUBLIC WATER AND PUBLIC SEWERAGE UTILITIES, HOWARD COUNTY HEALTH DEPARTMENT
 COUNTY HEALTH OFFICE
 APPROVED, HOWARD COUNTY OFFICE OF PLANNING AND ZONING
 PLANNING DIRECTOR DATE: 2-27-75
 CHIEF DIVISION OF LAND DEVELOPMENT DATE: 2/27/75
 TRANSPORTATION PLANNING
 APPROVED FOR PUBLIC WATER, PUBLIC SEWER AND STORM DRAINAGE SYSTEMS AND ROADS, HOWARD COUNTY DEPT. OF PUBLIC WORKS
 DIRECTOR DATE: 2-28-75
 CHIEF BUREAU OF HIGHWAYS DATE: 2-11-75

APPROVED
 DIVISION OF LAND DEVELOPMENT AND TRANSPORTATION PLANNING
 HOWARD COUNTY
 DATE: 2/27/75

ASSOCIATED ENGINEERS, INC.
 4538 SILVER SPRING HYPERBOLIC
 SILVER SPRING, MARYLAND 20910
 REGISTERED PROFESSIONAL ENGINEERS
 LICENSE NO. 11109

WORTHINGTON
 ELEMENTARY SCHOOL
 HOWARD COUNTY, MARYLAND

DATE: DD-2

DRAINAGE
 DIVIDES

McLEOD, FERRARA, ENSIGN
 CHARTERED
 ARCHITECTS
 1101 E. SEAGRAM
 BETHESDA, MARYLAND 20814
 STRUCTURAL ENGINEERS
 ELECTRICAL ENGINEERS
 MECHANICAL ENGINEERS
 CIVIL ENGINEERS