

APPROVED FOR PUBLIC WATER AND PUBLIC SEWERAGE SYSTEMS BY HOWARD COUNTY HEALTH DEPARTMENT.

*W. J. Adams* 4/30/75  
COUNTY HEALTH OFFICER DATE

APPROVED: HOWARD COUNTY OFFICE OF PLANNING AND ZONING.

*Thomas L. Harris* 5-1-75  
PLANNING DIRECTOR DATE

*J. H. Claron* 5/1/75  
CHIEF DIVISION OF LAND DEVELOPMENT AND TRANSPORTATION DATE

DEPARTMENT OF PUBLIC WORKS APPROVED: FOR PUBLIC WATER, PUBLIC SEWERAGE AND STORM DRAINAGE SYSTEMS AND ROADS.

*Will. A. Oltm* 4/28/75  
DIRECTOR DATE

*B. M. Pehel* 4/22/75  
CHIEF, BUREAU OF HIGHWAYS DATE

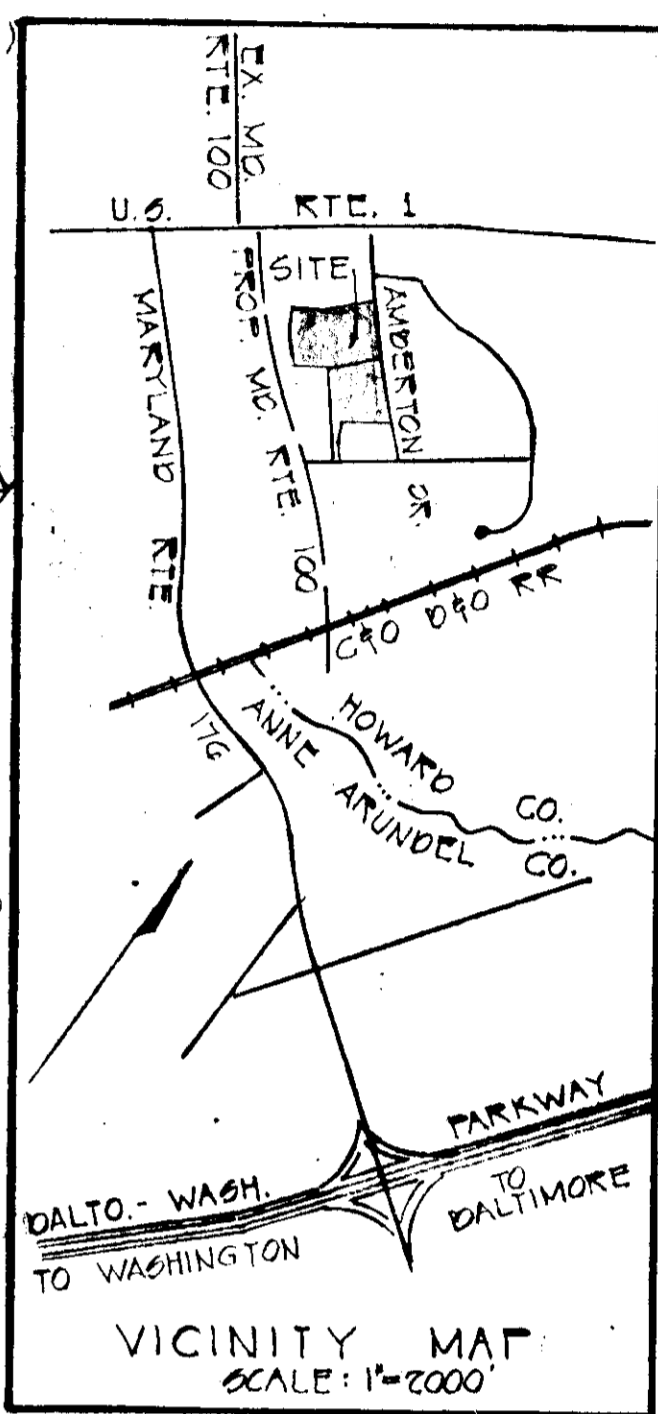
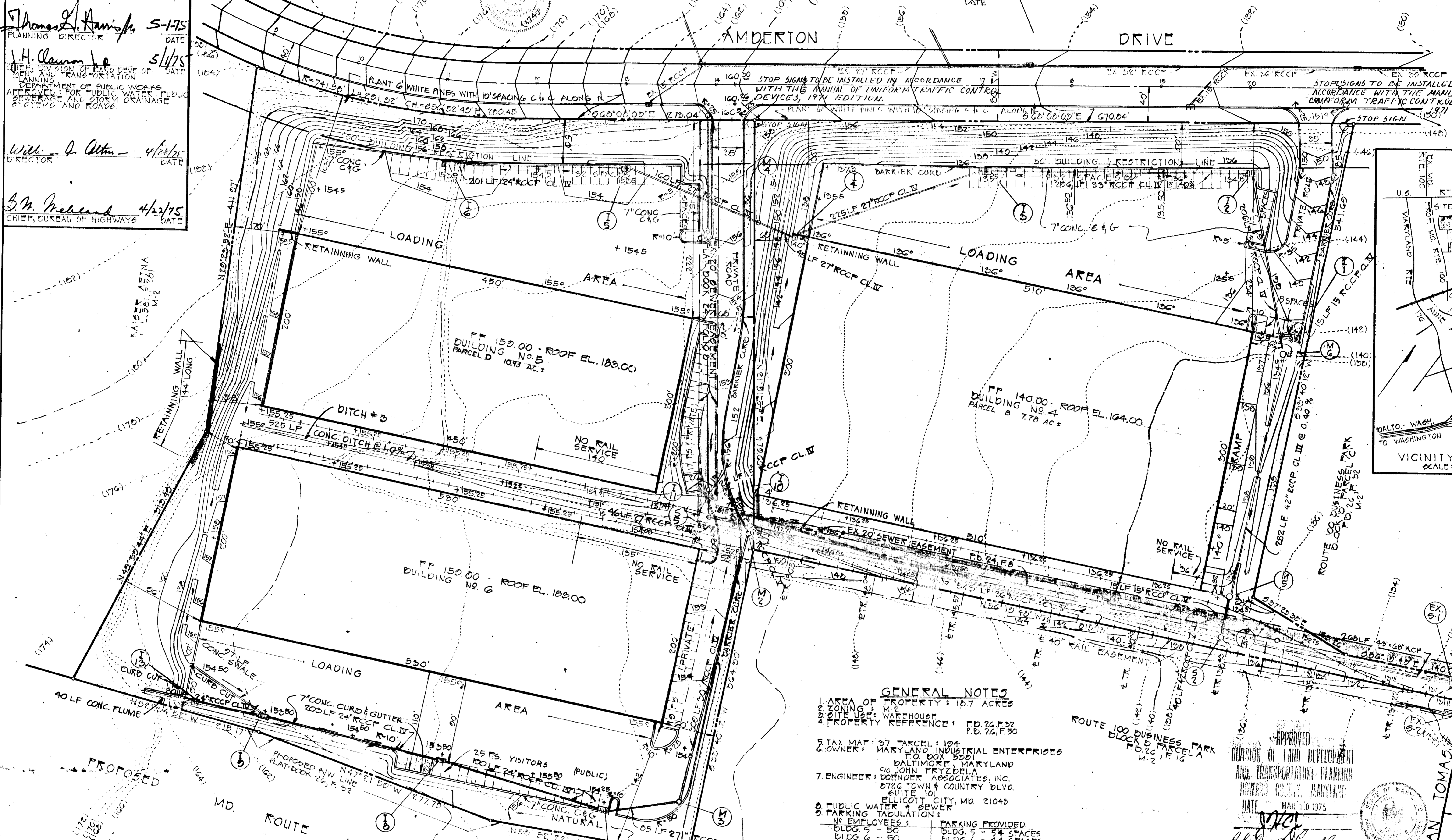
ENGINEER'S STATEMENT  
I CERTIFY THAT THIS PLAN FOR EROSION AND SEDIMENT CONTROL REPAIRS TO A PRACTICAL AND WORKABLE PLAN BASED ON MY PERSONAL KNOWLEDGE OF THE SITE CONDITIONS AND THAT IT WAS PREPARED IN ACCORDANCE WITH THE REQUIREMENTS OF THE HOWARD SOIL CONSERVATION DISTRICT.

*John L. Schmitt* 4/11/75  
DATE

DEVELOPER'S STATEMENT  
I CERTIFY THAT ALL THE DEVELOPMENT AND/OR CONSTRUCTION WILL BE DONE ACCORDING TO THIS PLAN OF DEVELOPMENT AND PLAN FOR EROSION AND SEDIMENT CONTROL AND I ALSO AUTHORIZED PERIODIC ON-SITE INSPECTION BY THE HOWARD SOIL CONSERVATION DISTRICT OR THEIR AUTHORIZED AGENTS. ANY DAMAGE TO NEIGHBORLY OR ADJACENT PROPERTY FROM THIS PLAN WILL NOT BE MADE UNLESS AUTHORIZED BY THE HOWARD SOIL CONSERVATION DISTRICT.

*Philip A. Nappola* 4/11/75  
DATE

ISSUE	BY & DATE	DESCRIPTION	CHECK	APPROVED & DATE



**GENERAL NOTES**

- AREA OF PROPERTY: 16.71 ACRES
- ZONING: M-2
- SITE USE: WAREHOUSE
- PROPERTY REFERENCE: FD 26, P. 32
- TAX MAP: 37 PARCEL: 124
- OWNER: MARYLAND INDUSTRIAL ENTERPRISES TO BOX 5501 BALTIMORE, MARYLAND
- ENGINEER: DOENDER ASSOCIATES, INC. 0726 TOWN & COUNTRY BLVD. SUITE 101 ELICOTT CITY, MD. 21040
- PUBLIC WATER & SEWER
- PARKING TABULATION:
 

NO EMPLOYEES:	PARKING PROVIDED:
BLDG. 5 - 50	BLDG. 5 - 24 SPACES
BLDG. 6 - 50	BLDG. 6 - 44 SPACES
BLDG. 4 - 50	BLDG. 4 - 43 SPACES
TOTAL PARKING PROVIDED: 141 SPACES	TOTAL PARKING REQUIRED: 75 SPACES

**SITE ANALYSIS**

PARCEL 'D'	7.18A AC.	PARCEL 'D'	10.03 AC.
AREA OF BUILDING	2.51 AC.	AREA OF BUILDING	4.50 AC.
AREA OF DRIVEWAY & PARKING LOT	1.76 AC.	AREA OF DRIVEWAY & PARKING LOT	3.23 AC.
GREEN AREA	2.51 AC.	GREEN AREA	3.20 AC.

**NOTE:**  
ALL ROOF DRAINS NOT OUTLETING DIRECTLY ONTO ASPHALT PAVING WHICH IS SERVED BY A SURFACE INLET INTO THE STORM DRAINAGE SYSTEM, OR PIPED TO OUTFALL DIRECTLY INTO THE CONCRETE DITCH (DITCH #2), SHALL BE PIPED DIRECTLY INTO THE CLOSEST STORM DRAINAGE PIPE IN ACCORDANCE WITH ALL APPROPRIATE HO. CO. STDS. FOR STORM DRAINAGE AND THE HO. CO. PLUMBING CODE.

APPROVED  
DIVISION OF LAND DEVELOPMENT AND TRANSPORTATION  
HOWARD COUNTY, MARYLAND  
DATE: MAR 10 1975  
*Philip A. Nappola* 4/9/75

**SITE PLAN**

PROJECT: ROUTE 100 BUSINESS PARK BLOCK 'B' PARCELS 'B' & 'D' TAX MAP 37 P. 104

LOCATION: 10<sup>th</sup> ELECTION DISTRICT HOWARD CO., MD.

DATE: 7/2/74 DES. BY: TS DRAWN BY: T.D. CHKD. BY: TS

SCALE: 1"=50' JOB NO: 7403 DRWG. NO: 1076

STATE OF MARYLAND REGISTERED PROFESSIONAL LAND SURVEYOR  
**BOENDER ASSOCIATES INC.**  
BALTIMORE, MD. 405-7777  
SALISBURY, MD. 740-1286  
WESTMINSTER, MD. 8-8-5588

APPROVED FOR PUBLIC WATER AND PUBLIC DRAINAGE SYSTEMS, HOWARD COUNTY HEALTH DEPARTMENT.

*Robert W. Zuehl* 4/30/75  
COUNTY HEALTH OFFICER DATE

*Donald J. Hamish* 5-1-75  
PLANNING DIRECTOR DATE

*J. H. Clavon* 5/1/75  
DEPT. DIVISION OF LAND DEVELOPMENT, PLANNING AND TRANSPORTATION DATE

*Will - O. Act* 4/4/75  
DIRECTOR DATE

*S. B. Woodard* 4/22/75  
CHIEF, BUREAU OF HIGHWAYS DATE

NOTES: EXCESS DIRT TO BE REMOVED FROM SITE WILL BE TRUCKED TO AN APPROVED FILL SITE IN ANNE ARUNDEL COUNTY.

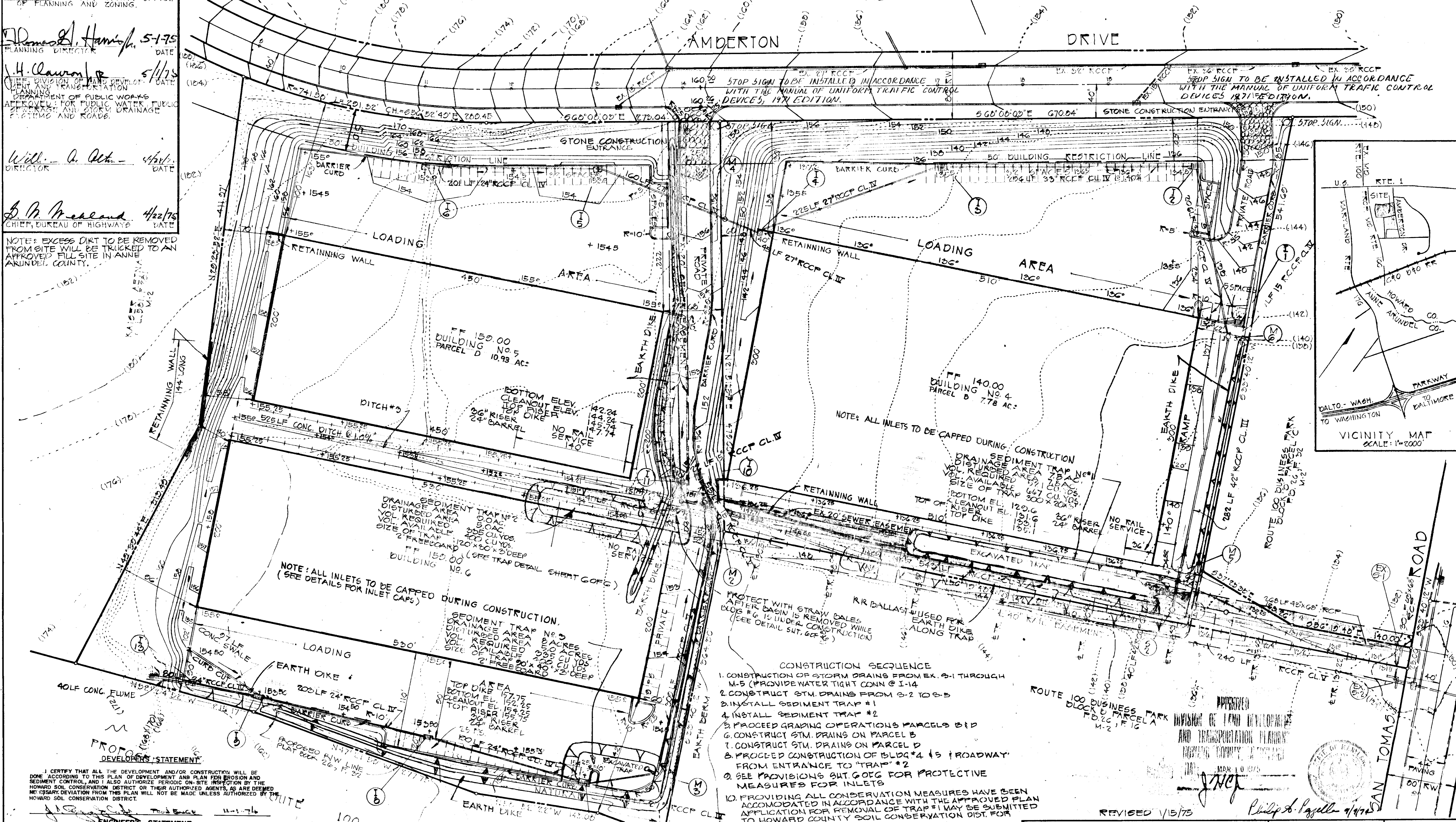
REVIEWED FOR HOWARD S.C.D. AND MEETS TECHNICAL REQUIREMENTS.

*Robert W. Zuehl* 4-21-75  
U.S. SOIL CONSERVATION SERVICE DATE

THIS DEVELOPMENT PLAN IS APPROVED FOR SOIL EROSION AND SEDIMENT CONTROL BY THE HOWARD COUNTY SOIL CONSERVATION DISTRICT.

*Robert W. Zuehl* 4-21-75  
HOWARD SOIL CONSERVATION DISTRICT DATE

REVISIONS			
ISSUE	BY	DATE	DESCRIPTION



NOTE: ALL INLETS TO BE CAPPED DURING CONSTRUCTION. (SEE DETAILS FOR INLET CAPS)

NOTE: ALL INLETS TO BE CAPPED DURING CONSTRUCTION. SEDIMENT TRAP NO. 1 DISTURBED AREA 78 AC. VOL. REQUIRED 1271 CU YDS. VOL. AVAILABLE 667 CU YDS. SIZE OF TRAP 300 X 20 X 20. BOTTOM ELEV. 120.16 CLEANOUT ELEV. 120.16 TOP OF RISE 125.1

PROTECT WITH STRAW BALES AFTER CASING IS REMOVED WHILE BLDG # 6 IS UNDER CONSTRUCTION (SEE DETAIL SHT. 606)

- CONSTRUCTION SEQUENCE**
1. CONSTRUCTION OF STORM DRAINS FROM EX. 5-1 THROUGH M-5 (PROVIDE WATER TIGHT CONN @ I-14)
  2. CONSTRUCT STM. DRAINS FROM S-2 TO S-5
  3. INSTALL SEDIMENT TRAP #1
  4. INSTALL SEDIMENT TRAP #2
  5. PROCEED GRADING OPERATIONS PARCELS B & D
  6. CONSTRUCT STM. DRAINS ON PARCEL B
  7. CONSTRUCT STM. DRAINS ON PARCEL D
  8. PROCEED CONSTRUCTION OF BLDG #4 & 5 (ROADWAY FROM ENTRANCE TO "TRAP" #2)
  9. SEE PROVISIONS BUT GOFG FOR PROTECTIVE MEASURES FOR INLETS
  10. PROVIDING ALL CONSERVATION MEASURES HAVE BEEN ACCOMMODATED IN ACCORDANCE WITH THE APPROVED PLAN APPLICATION FOR REMOVAL OF TRAP #1 MAY BE SUBMITTED TO HOWARD COUNTY SOIL CONSERVATION DIST. FOR APPROVAL
  11. CONSTRUCT STM. DRAINS M-2 THRU M-3
  12. INSTALL TRAP #3 AS SHOWN ON PLAN
  13. COMPLETE GRADING FOR PARCEL C & BLDG #6
  14. TRAP #2 MAY BE REMOVED (SEE NOTE #10)
  15. TRAP #3 MAY BE REMOVED (SEE NOTE #10)
  16. REMOVE ALL PROTECTIVE DEVICES FROM INLETS

DEVELOPER'S STATEMENT  
I CERTIFY THAT ALL THE DEVELOPMENT AND/OR CONSTRUCTION WILL BE DONE ACCORDING TO THIS PLAN OF DEVELOPMENT AND PLAN FOR EROSION AND SEDIMENT CONTROL, AND I ALSO AUTHORIZE PERIODIC ON-SITE INSPECTION BY THE HOWARD SOIL CONSERVATION DISTRICT OR THEIR AUTHORIZED AGENTS, AS ARE DEEMED NECESSARY. DEVIATION FROM THIS PLAN WILL NOT BE MADE UNLESS AUTHORIZED BY THE HOWARD SOIL CONSERVATION DISTRICT.

ENGINEER'S STATEMENT  
I CERTIFY THAT THIS PLAN FOR EROSION AND SEDIMENT CONTROL REPRESENTS A PRACTICE AND WORKABLE PLAN BASED ON MY PERSONAL KNOWLEDGE OF THE SITE CONDITIONS AND THAT IT WAS PREPARED IN ACCORDANCE WITH THE REQUIREMENTS OF THE HOWARD SOIL CONSERVATION DISTRICT.

SITE ANALYSIS		TOTAL AREAS	
PARCEL "B"	7.78 AC.	PARCEL "D"	10.93 AC.
AREA OF BUILDING	3.51 AC.	AREA OF BUILDING	4.50 AC.
AREA OF DRIVEWAY AND PARKING PAVING	1.76 AC.	AREA OF DRIVEWAY AND PARKING PAVING	3.23 AC.
GREEN AREA	2.51 AC.	GREEN AREA	3.20 AC.
		TOTAL BLDG. AREA	8.01 ACRES
		TOTAL DRIVEWAY	4.90 ACRES
		TOTAL GREEN AREA	8.71 ACRES

TITLE: SEDIMENT CONTROL PLAN  
PROJECT: ROUTE 100 BUSINESS PARK BLOCK "B" PARCELS "B" & "D" TAX MAP: 57 E 104  
LOCATION: COLLECTION DISTRICT HOWARD CO., MD.  
DATE: 7/2/74 DES. BY: J.S. DRAWN BY: T.D. CHKD. BY: J.S.  
SCALE: 1"=50' JOB NO. 1403 DRWG. NO. 2076

APPROVED  
DIRECTOR OF LAND DEVELOPMENT AND TRANSPORTATION PLANNING  
HOWARD COUNTY, MARYLAND  
MAY 10 1975  
*Richard S. Lippell* 4/17/75

STATE OF MARYLAND  
PROFESSIONAL LAND SURVEYOR  
BOENDER ASSOCIATES INC.  
BALTIMORE, MD. 466-7777  
SALISBURY, MD. 740-1288  
WESTMINSTER, MD. 848-5888

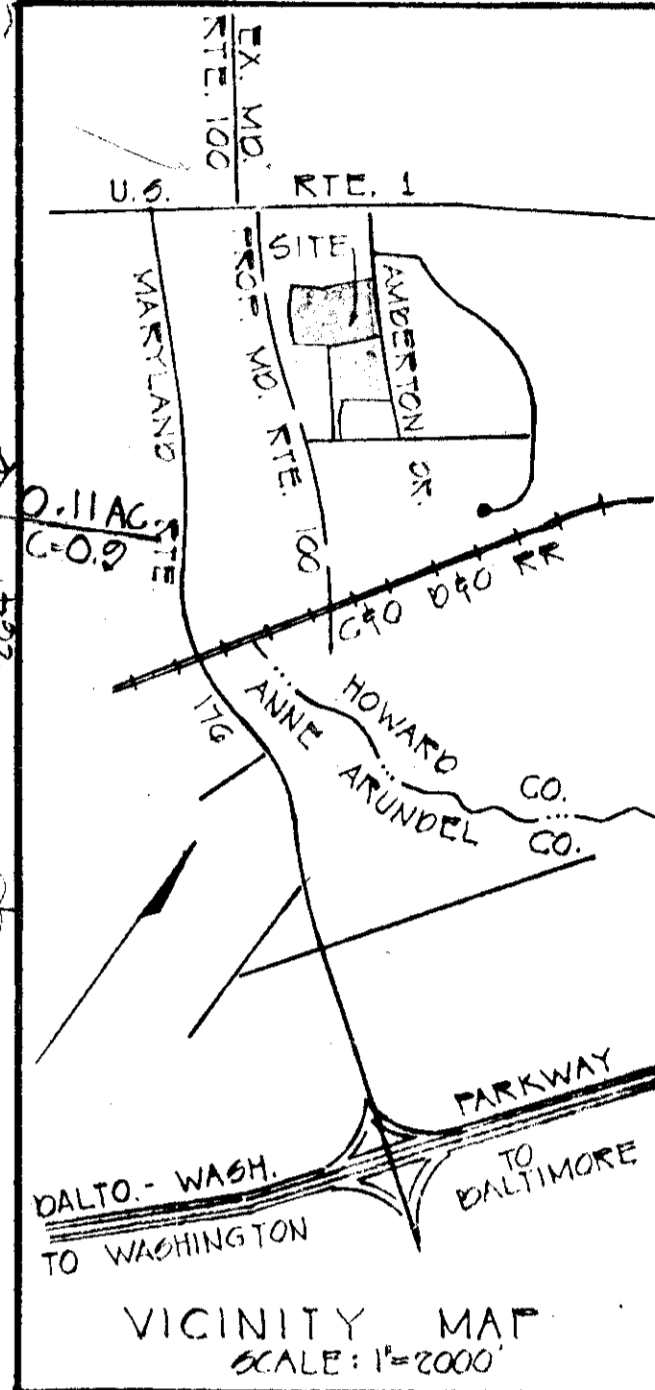
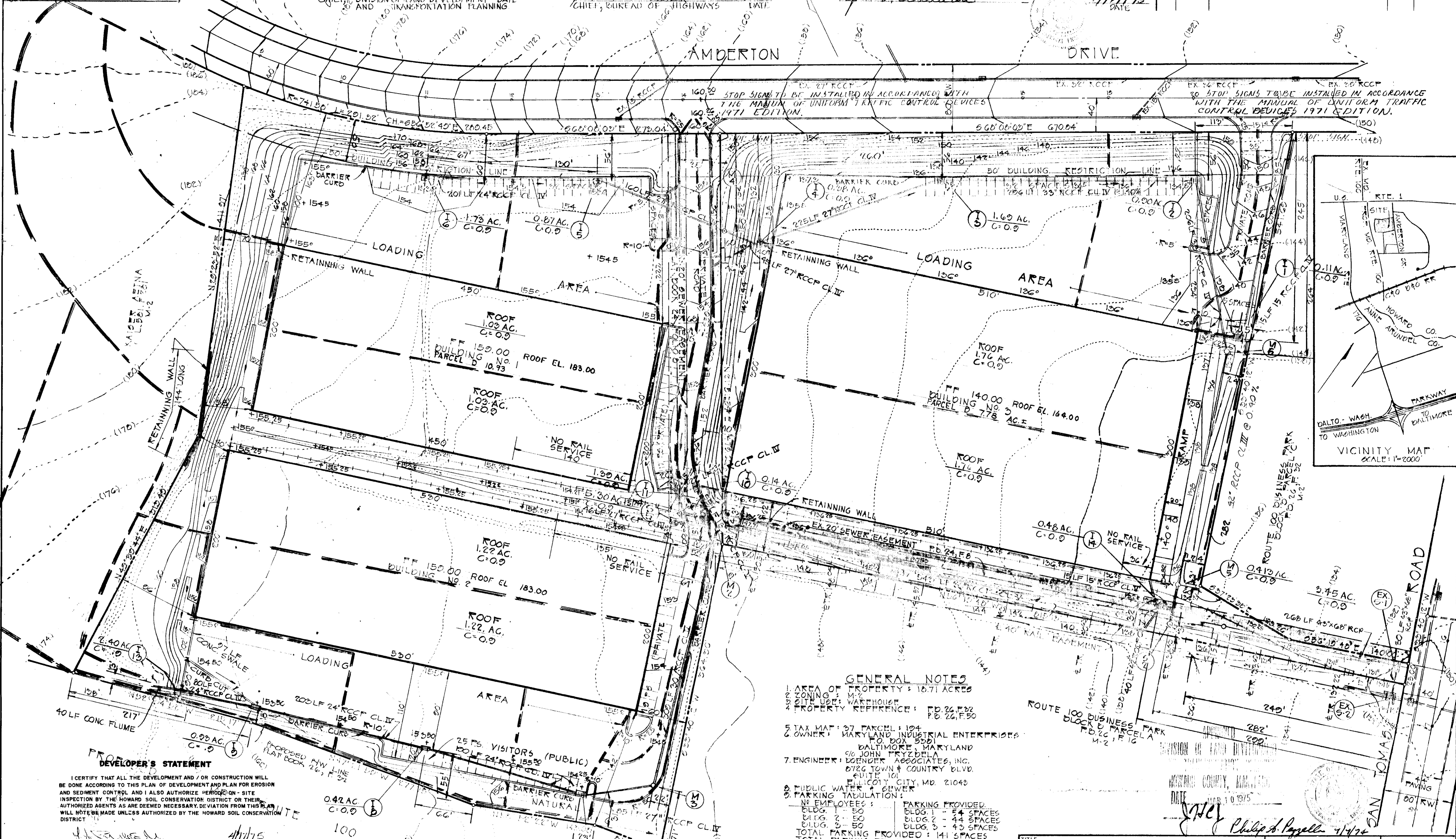
APPROVED FOR PUBLIC WATER AND PUBLIC SEWERAGE SYSTEMS, HOWARD COUNTY HEALTH DEPARTMENT.  
 APPROVED: HOWARD COUNTY OFFICE OF PLANNING AND ZONING.  
 APPROVED FOR PUBLIC WATER, PUBLIC SEWERAGE AND STORM DRAINAGE SYSTEMS AND ROADS.

DATE: 1-75  
 PLANNING DIRECTOR: H. Claxton  
 CHIEF, DIVISION OF LAND DEVELOPMENT AND TRANSPORTATION PLANNING

DATE: 4/22/75  
 DIRECTOR: J. H. McLean  
 CHIEF, BUREAU OF HIGHWAYS

DATE: 4/17/75  
 ENGINEER'S STATEMENT: I CERTIFY THAT THIS PLAN FOR EROSION AND SEDIMENT CONTROL REPRESENTS A PRACTICAL AND WORKABLE PLAN BASED ON MY PERSONAL KNOWLEDGE OF THE SITE CONDITIONS AND THAT IT WAS PREPARED IN ACCORDANCE WITH THE REQUIREMENTS OF THE HOWARD SOIL CONSERVATION DISTRICT.

REVISIONS			
ISSUE	BY	DATE	DESCRIPTION



**GENERAL NOTES**

1. AREA OF PROPERTY: 12.71 ACRES
2. ZONING: M-2
3. SITE USE: WAREHOUSE
4. PROPERTY REFERENCE: PD 26.F.52, PD 26.F.50
5. TAX MAP: 37 PARCEL: 194
6. OWNER: MARYLAND INDUSTRIAL ENTERPRISES, P.O. BOX 5201, BALTIMORE, MARYLAND
7. ENGINEER: DOENDER ASSOCIATES, INC., c/o JOHN PRYZDELA, 8726 TOWN & COUNTRY BLVD., SUITE 101, ELICOTT CITY, MD. 21042
8. PUBLIC WATER & SEWER: SEE TADULATION
9. PARKING TABULATION:
 

NO EMPLOYEES:	PARKING PROVIDED:
BLDG. 1 - 50	BLDG. 1 - 54 SPACES
BLDG. 2 - 50	BLDG. 2 - 44 SPACES
BLDG. 3 - 50	BLDG. 3 - 43 SPACES
TOTAL PARKING PROVIDED: 141 SPACES	TOTAL PARKING REQUIRED: 75 SPACES

NOTE: TOPO FIELD RUN BY DOENDER ASSOCIATES, INC.

**DEVELOPER'S STATEMENT**

I CERTIFY THAT ALL THE DEVELOPMENT AND / OR CONSTRUCTION WILL BE DONE ACCORDING TO THIS PLAN OF DEVELOPMENT AND PLAN FOR EROSION AND SEDIMENT CONTROL AND I ALSO AUTHORIZE PERIODIC ON-SITE INSPECTION BY THE HOWARD SOIL CONSERVATION DISTRICT OR THEIR AUTHORIZED AGENTS AS ARE DEEMED NECESSARY. DEVIATION FROM THIS PLAN WILL NOT BE MADE UNLESS AUTHORIZED BY THE HOWARD SOIL CONSERVATION DISTRICT.

DATE: 4/17/75

**TITLE: DRAINAGE AREA MAP**

PROJECT: ROUTE 100 BUSINESS PARK, BLOCK 'D' PARCELS 'B' & 'D', TAX MAP: 37 F. 194

LOCATION: 16th ELECTION DISTRICT, HOWARD CO., MD.

DATE: 7/2/74 DES. BY: J.S. DRAWN BY: T.L. CHKD. BY: J.S.

SCALE: 1"=50' JOB NO. 1405 DRWG. NO. 3016

DATE: 4/17/75

Philip A. Payella

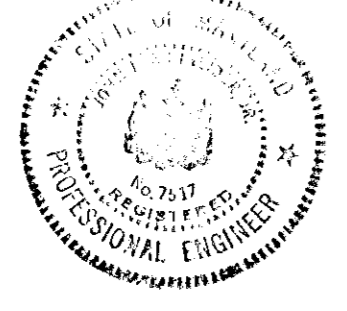
STATE OF MARYLAND PROFESSIONAL ENGINEER

**BOENDER ASSOCIATES INC.**

BALTIMORE, MD. 485-7777  
 SALISBURY, MD. 749-1286  
 WESTMINSTER, MD. 848-5588

ENGINEER'S STATEMENT  
 I CERTIFY THAT THIS PLAN FOR EROSION AND SEDIMENT CONTROL REPRESENTS A PRACTICAL AND WORKABLE PLAN BASED ON MY PERSONAL KNOWLEDGE OF THE SITE CONDITIONS AND THAT IT WAS PREPARED IN ACCORDANCE WITH THE REQUIREMENTS OF THE HOWARD SOIL CONSERVATION DISTRICT.

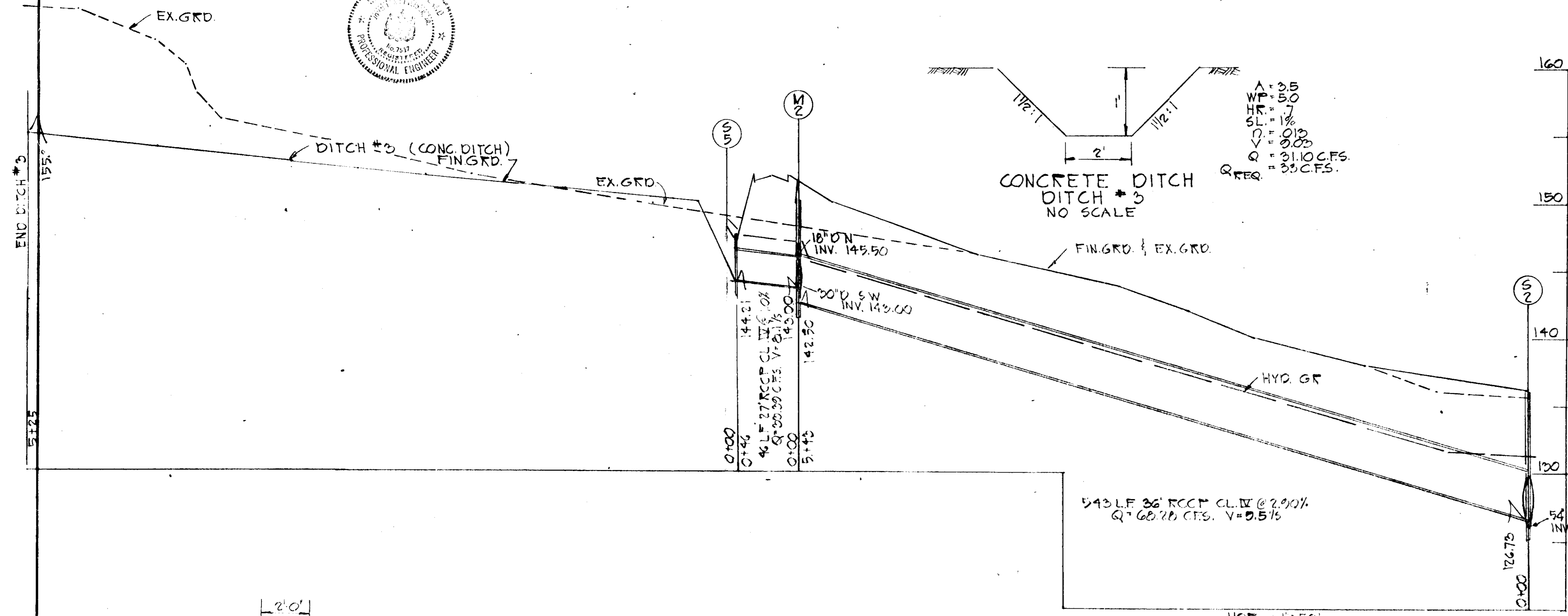
John J. Schuler  
 4/17/75  
 DATE



DEVELOPER'S STATEMENT  
 I CERTIFY THAT ALL THE DEVELOPMENT AND/OR CONSTRUCTION WILL BE DONE ACCORDING TO THIS PLAN OF DEVELOPMENT AND PLAN FOR EROSION AND SEDIMENT CONTROL AND I ALSO AUTHORIZE PERIODIC ON SITE INSPECTION BY THE HOWARD SOIL CONSERVATION DISTRICT OR THEIR AUTHORIZED AGENTS AS ARE DEEMED NECESSARY. DEVIATION FROM THIS PLAN WILL NOT BE MADE UNLESS AUTHORIZED BY THE HOWARD SOIL CONSERVATION DISTRICT.

J.P. Hagg  
 4/17/75  
 DATE

REVISIONS			
ISSUE	BY	DATE	DESCRIPTION



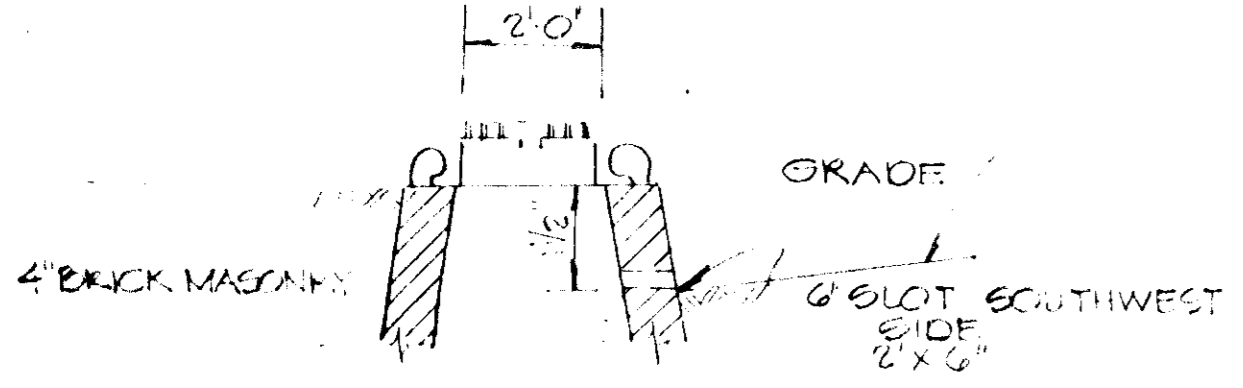
54\"/>

SCALE: HOR. 1\"/>

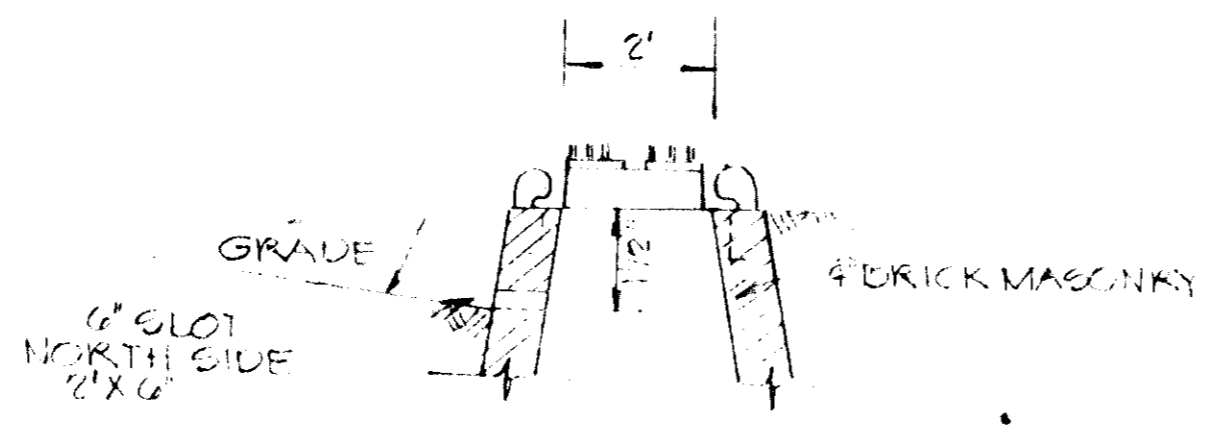
STRUCTURE SCHEDULE						
NO.	TYPE	INV. IN	INV. OUT	TOP EL.	LOCATION	REMARKS
I-1	HO. CO. STD. 'S' COMB.	-	131.00	134.5	AS SHOWN	SEE HO. CO. STD. DETAILS DRWG. 99, P.154.
I-2	HO. CO. STD. 'S' INLET	127.04	127.04	134.2	"	SEE HO. CO. STD. DETAILS DRWG. 99, P.153.
I-3	HO. CO. STD. DBL. 'S' INLET	129.62	129.12	135.5	"	SEE HO. CO. STD. DETAILS DRWG. 99, P.153.
I-4	HO. CO. STD. 'C' INLET	139.00	130.52	140.63	"	SEE HO. CO. STD. DETAILS DRWG. 64, P.110C
I-5	HO. CO. STD. 'S' COMB.	140.00	146.64	150.5	"	SEE HO. CO. STD. DETAILS DRWG. 99, P.153
I-6	HO. CO. STD. DBL. 'S' INLET	-	149.69	153.5	"	SEE HO. CO. STD. DETAILS DRWG. 99, P.153
I-7	HO. CO. STD. 'S' INLET	145.57	145.17	154.25	"	SEE HO. CO. STD. DETAILS DRWG. 99, P.153
I-8	HO. CO. STD. 'S' INLET	146.39	146.19	153.5	"	SEE HO. CO. STD. DETAILS DRWG. 99, P.153
I-9	HO. CO. STD. 'S' INLET	146.50	146.30	153.5	"	SEE HO. CO. STD. DETAILS DRWG. 99, P.153
I-10	HO. CO. STD. 'S' INLET	146.50	146.05	150.5	"	SEE HO. CO. STD. DETAILS DRWG. 99, P.153
I-11	HO. CO. STD. DBL. 'S' INLET	-	146.52	150.5	"	SEE HO. CO. STD. DETAILS DRWG. 99, P.153
I-12	HO. CO. STD. 'C' INLET	-	149.36	156.83	"	SEE HO. CO. STD. DETAILS DRWG. 64, P.110C
I-14	HO. CO. STD. 'C' ENDWALL	132.60	-	-	"	SEE HO. CO. STD. DETAILS DRWG. 48, P.103
S-1	'C' MANHOLE	124.60	124.00	SET	"	SEE DETAIL
S-2	'C' MANHOLE	126.75	125.75	IN	"	SEE DETAIL
M-5	HO. CO. STD. MANHOLE	-	-	127.02	FIELD	SEE HO. CO. STD. DETAILS DRWG. 103, P.158
M-6	HO. CO. STD. MANHOLE	-	-	144.71	"	SEE HO. CO. STD. DETAILS DRWG. 103, P.158
M-2	HO. CO. STD. MANHOLE	143.00	142.50	-	"	SEE HO. CO. STD. DETAILS DRWG. 103, P.158
M-3	HO. CO. STD. MANHOLE	144.71	144.24	155.0	"	SEE HO. CO. STD. DETAILS DRWG. 103, P.158
M-4	HO. CO. STD. MANHOLE	142.0	147.80	154.5	"	SEE HO. CO. STD. DETAILS DRWG. 103, P.158

NOTE:

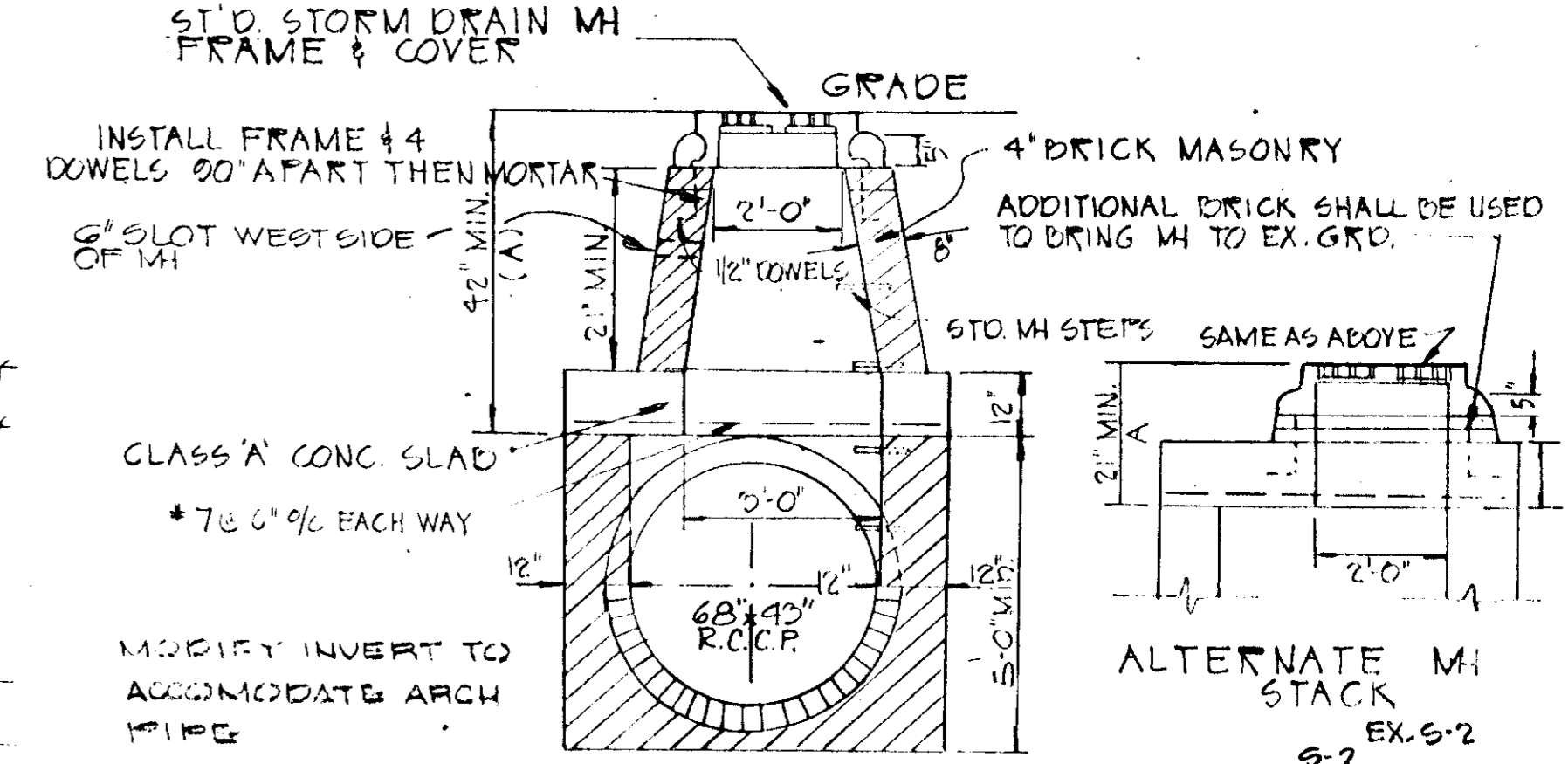
ALL ROOF DRAINING NOT OUTLETING DIRECTLY ONTO ASPHALT PAVING WHICH IS SERVED BY A SURFACE INLET INTO THE STORM DRAINAGE SYSTEM OR PIPED TO OUTFALL DIRECTLY INTO THE CLOSEST STORM DRAINAGE PIPE IN ACCORDANCE WITH ALL APPROPRIATE HO. CO. STD. FOR STORM DRAINAGE AND THE HO. CO. PLUMBING CODE.



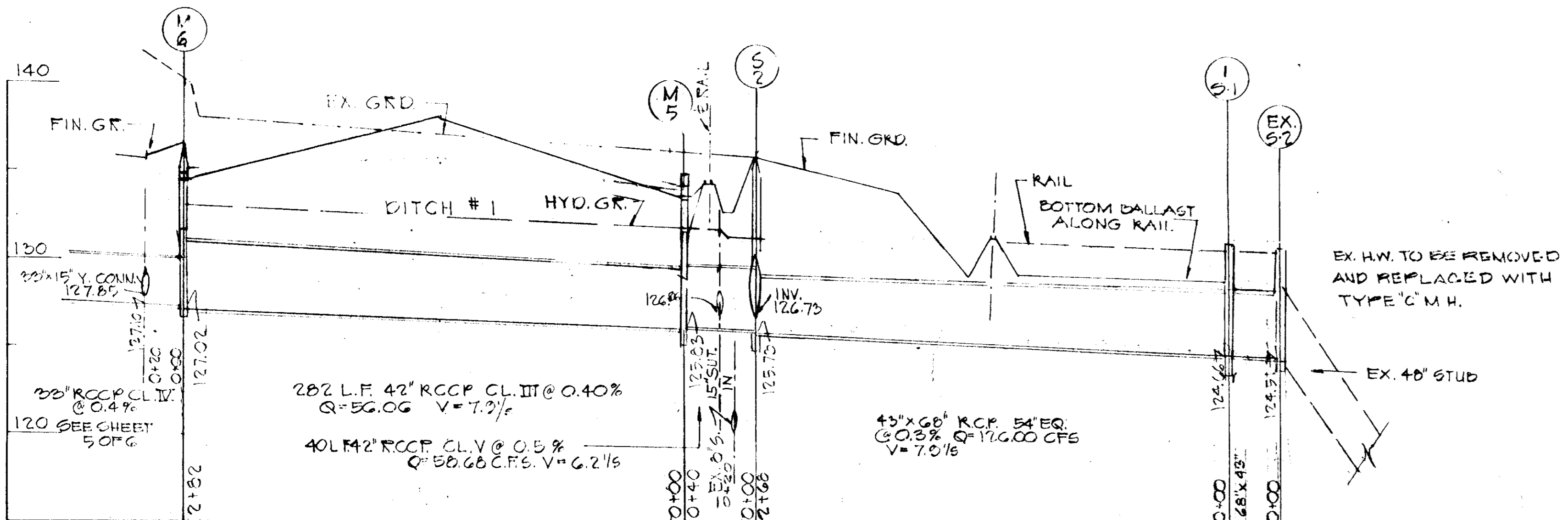
HO. CO. STD. MANHOLE WITH 6\"/>



HO. CO. STD. MANHOLE WITH 6\"/>

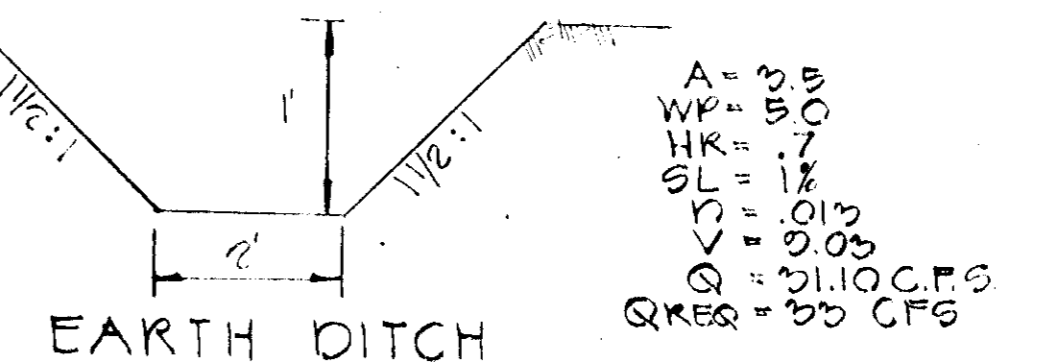


TYPE 'C' M.H. NO SCALE EX. 5-1 & 5-2



PROFILE

SCALE: HOR. 1\"/>



EARTH DITCH DITCH NO. #2 NO SCALE

DEPARTMENT OF PUBLIC WORKS  
 APPROVED FOR PUBLIC WATER, PUBLIC SEWERAGE AND STORM DRAINAGE SYSTEMS AND ROADS.  
 DIRECTOR \_\_\_\_\_ DATE \_\_\_\_\_

DEPARTMENT OF PUBLIC WORKS  
 S. P. McNeel 4/22/75  
 CHIEF BUREAU OF HIGHWAY DATE  
 OFFICE OF PLANNING AND ZONING  
 H. Clawson 5/1/75  
 CHIEF DIVISION OF LAND DEVELOPMENT AND TRANSPORTATION PLANNING DATE

APPROVED  
 DIVISION OF LAND DEVELOPMENT AND TRANSPORTATION PLANNING  
 HOWARD COUNTY, MARYLAND  
 DATE: MAR 10 1975  
 J.P.C.

TITLE STORM DRAIN PROFILES			
PROJECT ROUTE 100 BUSINESS PARK BLOCK 'D' PARCELS 'D' & 'D' TAX MAP 87, P.104			
LOCATION 1ST ELECTION DISTRICT HOWARD CO., MD.			
DATE: 01/6/74	DES. BY: I.S.	DRAWN BY: T.D.	CHKD. BY: T.S.
SCALE: AS SHOWN	JOB NO. 74621	DRWG. NO. 4 OF 6	

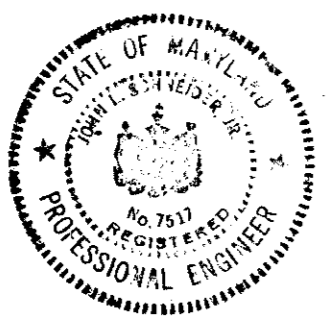


ENGINEERING PLANNING SURVEYING BY  
**BOENDER ASSOCIATES INC.**  
 BALTIMORE, MD. 486-7777  
 SALISBURY, MD. 740-7266  
 WESTMINSTER, MD. 848-5588

ENGINEER'S STATEMENT

I CERTIFY THAT THIS PLAN EROSION AND SEDIMENT CONTROL REPRESENTS A PRACTICAL AND WORKABLE PLAN BASED ON MY PERSONAL KNOWLEDGE OF THE SITE CONDITIONS AND THAT IT WAS PREPARED IN ACCORDANCE WITH THE REQUIREMENTS OF THE HOWARD SOIL CONSERVATION DISTRICT.

*John Schneider* 4/17/75



DEVELOPER'S STATEMENT

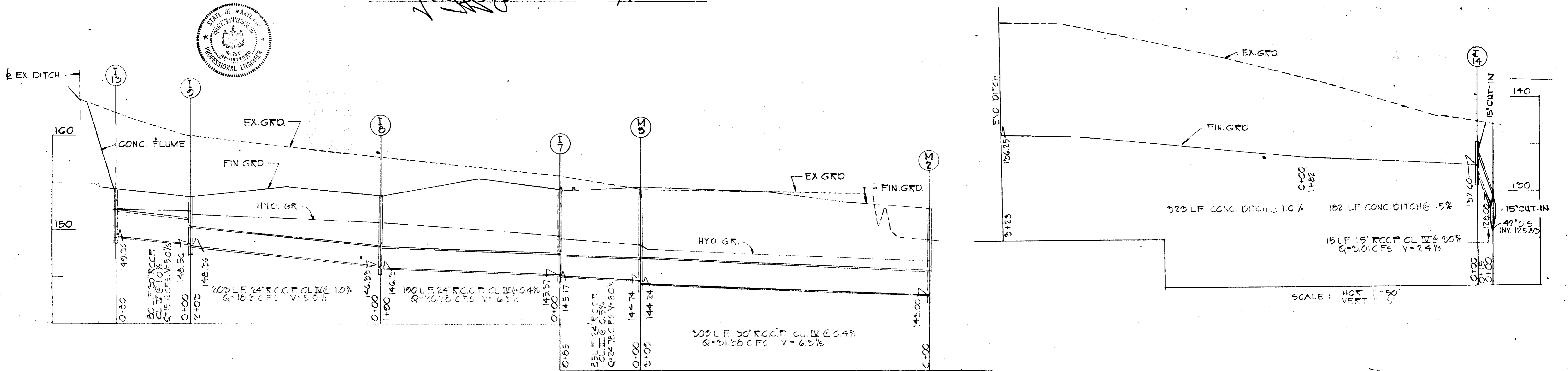
I CERTIFY THAT ALL THE DEVELOPMENT AND/OR CONSTRUCTION WILL BE DONE ACCORDING TO THIS PLAN OF DEVELOPMENT AND PLAN FOR EROSION AND SEDIMENT CONTROL, AND I ALSO AUTHORIZE PERIODIC ON-SITE INSPECTION BY THE HOWARD SOIL CONSERVATION DISTRICT OR THEIR AUTHORIZED AGENTS, AS ARE DEEMED NECESSARY, DEVIATION FROM THIS PLAN WILL NOT BE MADE UNLESS AUTHORIZED BY THE HOWARD SOIL CONSERVATION DISTRICT.

*John Schneider* 4/17/75

NOTE:

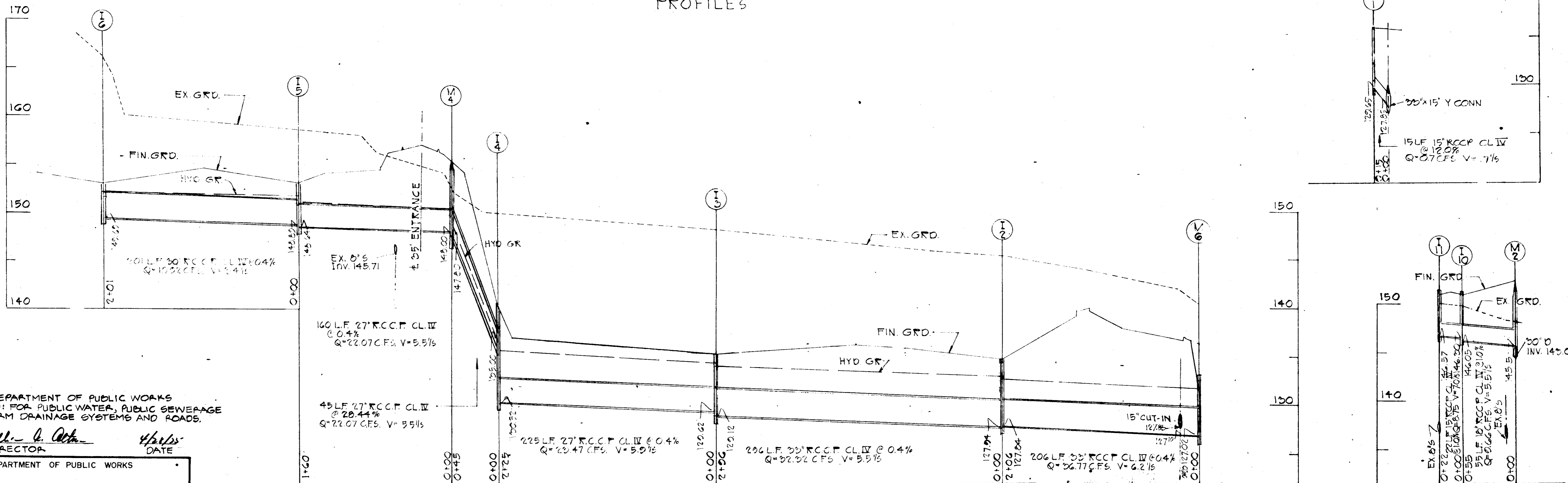
ALL ROOF DRAINING NOT OUTLETING DIRECTLY ONTO ASPHALT PAVING WHICH IS SEAVED BY A SURFACE INLET INTO THE STORM DRAINAGE SYSTEM, OR PIPED TO OUTFALL DIRECTLY INTO THE CONCRETE DITCH (DITCH #2), SHALL BE PIPED DIRECTLY INTO THE CLOSEST STORM DRAINAGE PIPE IN ACCORDANCE WITH ALL APPROPRIATE HO. CO. STDS. FOR STORM DRAINAGE AND THE HO. CO. PLUMBING CODE.

REVISIONS				
ISSUE	BY	DATE	DESCRIPTION	APPROVED & DATE



SCALE: HOR 1"=50'  
VERT 1"=5'

PROFILES



SCALE: HOR 1"=50'  
VERT 1"=5'

PROFILES

DEPARTMENT OF PUBLIC WORKS  
APPROVED FOR PUBLIC WATER, PUBLIC SEWERAGE  
AND STORM DRAINAGE SYSTEMS AND ROADS.

*William A. Calkins* 4/17/75  
DIRECTOR DATE

DEPARTMENT OF PUBLIC WORKS  
*B. M. Mendenhall* 4/22/75  
CHIEF BUREAU OF HIGHWAYS DATE  
*V. H. Dawson* 5/1/75  
CHIEF DIVISION OF LAND DEVELOPMENT AND  
TRANSPORTATION PLANNING DATE

APPROVED  
DIVISION OF LAND DEVELOPMENT  
AND TRANSPORTATION PLANNING  
HOWARD COUNTY, MARYLAND  
DATE MAR 1 0 1975  
*John*

TITLE <b>STORM DRAIN PROFILES</b>			ENGINEERING PLANNING SURVEYING BY <b>BOENDER ASSOCIATES INC.</b> BALTIMORE, MD. 485-7777 SALISBURY, MD. 745-1206 WESTMINSTER, MD. 848-5588
PROJECT ROUTE ONE HUNDRED BUSINESS FARM PARCELS	LOCATION 1ST ELECTION DISTRICT HOWARD CO., MD.		
DATE 01/07/74	DES. BY S.	DRAWN BY TD	CHKD. BY S.
SCALE AS SHOWN	JOB NO. 7402	DRWG. NO. 5 OF 6	DATE <i>Philip A. Lyell</i> 4/17/75

**SEDIMENT CONTROL NOTES**

- 1) THE H. S. C. D. AND BUREAU OF LICENSE, INSPECTION, AND PERMITS WILL BE GIVEN 24 HOURS NOTICE PRIOR TO ANY GRADING.
- 2) ALL SEDIMENT CONTROL STRUCTURES SHOWN ON THIS PLAN, UNLESS OTHERWISE SPECIFIED, WILL BE INSTALLED AND STABILIZED IN ACCORDANCE WITH NOTE #9 PRIOR TO ANY OTHER GRADING OR EARTH DISTURBANCE ON THIS SITE.
- 3) AS SOON AS ROUGH GRADING IS COMPLETED, AREA TO BE PAVED WILL BE STABILIZED WITH BASE MATERIAL.
- 4) ALL CUT AND FILL SLOPES WILL BE A MAXIMUM OF 3:1.
- 5) FOLLOWING THE STABILIZATION OF ALL AREAS, UPGRADE THE AREA OF THE SEDIMENT CONTROL MEASURES MAY BE REMOVED AND GRADED TO THE FINAL GRADES PLANNED AND STABILIZED IMMEDIATELY.
- 6) ELEVATIONS MARKED THUS (X) ARE FINISHED GRADES.
- 7) IN THE EVENT OF EXCESS OF MATERIAL, THE WASTE WILL BE STOCKPILED WITH A MAXIMUM 2:1 SLOPE ON AN AREA WHICH HAS BEEN CLEARED ON THE SITE. STOCKPILED MATERIAL WILL BE STABILIZED IN ACCORDANCE WITH NOTE #9.
- 8) SEDIMENT CONTROL MEASURES WILL NOT BE REMOVED UNTIL APPROVAL IS OBTAINED FROM THE H. S. C. D..
- 9) **TEMPORARY STABILIZATION:**  
APPLY: 2000 LBS. / ACRE OR 46 LBS. / SQ. FT. OF PULVERIZED DOLOMITIC LIMESTONE.  
500 LBS. / ACRE OR 11.5 LBS. / 1000 SQ. FT. OF 5-5-5 FERTILIZER. PLANT TO REVEGETASS @ 40 LBS. / ACRE. FERTILIZE WITH 5-10-10, AND MULCH WITH STRAW @ 1 1/2 TONS / ACRE.
- 10) **PERMANENT STABILIZATION:**  
APPLY: 2000 LBS. / ACRE OF PULVERIZED DOLOMITIC LIMESTONE.  
700 LBS. / ACRE OF 0-20-0 SUPER PHOSPHATE.  
1000 LBS. / ACRE OF 5-10-10 FERTILIZER.  
SEED: 85 LBS. / ACRE OF KENTUCKY 31 TALL FESCUE.  
40 LBS. / ACRE OF KENTUCKY BLUE GRASS.  
25 LBS. / ACRE OF ANNUAL RYE GRASS.  
NOTE: SEEDING MAY BE DONE BETWEEN MARCH 1 - MAY 1, OR AUGUST 1 - OCTOBER 1 ONLY.  
MULCH: 2 TONS / ACRE OF UNWEATHERED WHEATSTRAW, TIE MULCH DOWN WITH 480 GAL. / ACRE OF LIQUID ASPHALT.

REVIEWED FOR Howard S. C. D. AND MEETS TECHNICAL REQUIREMENTS. DATE: 4-21-75  
Charles W. Nelson U. S. SOIL CONSERVATION SERVICE

THIS DEVELOPMENT PLAN IS APPROVED FOR SOIL EROSION AND SEDIMENT CONTROL BY THE HOWARD SOIL CONSERVATION DISTRICT. APPROVED: Robert W. Johnson DATE: 4-21-75  
HOWARD SOIL CONSERVATION DIST.

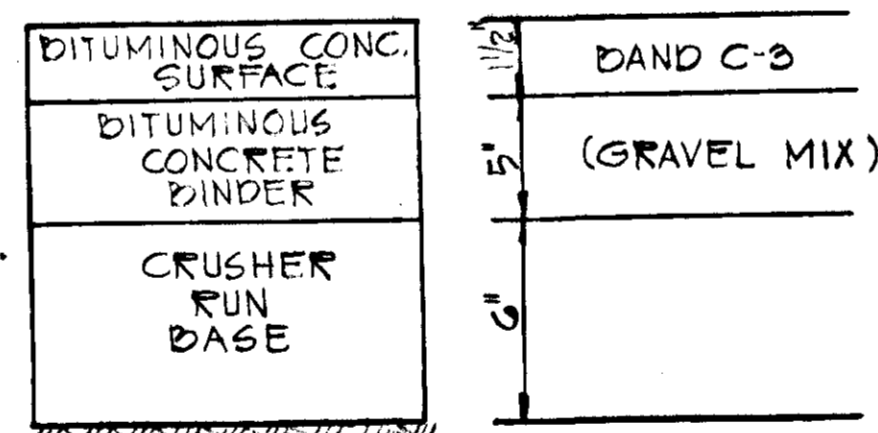
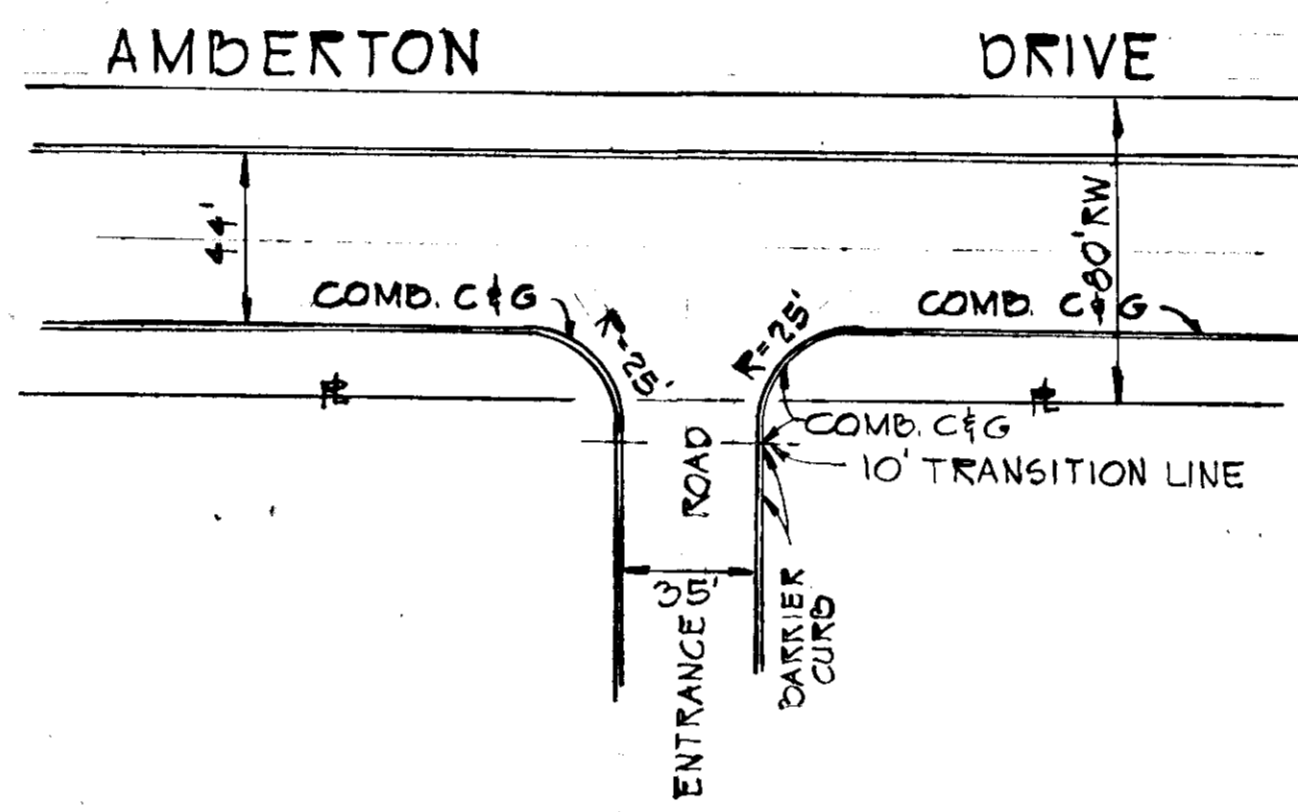
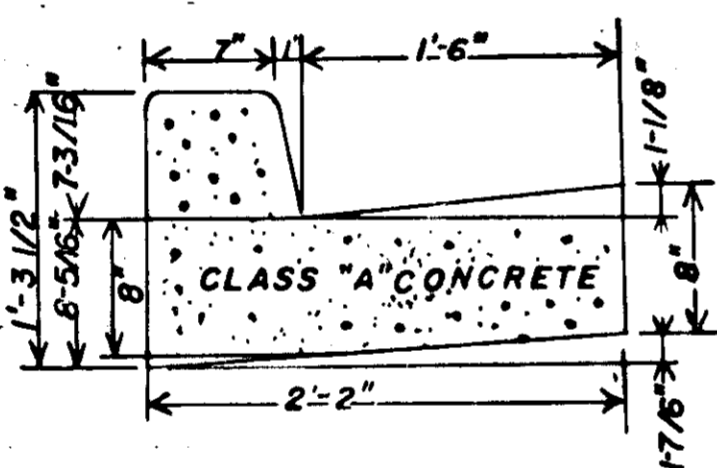
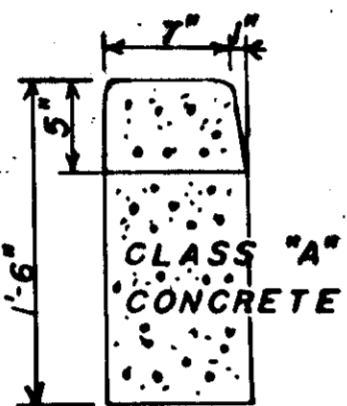
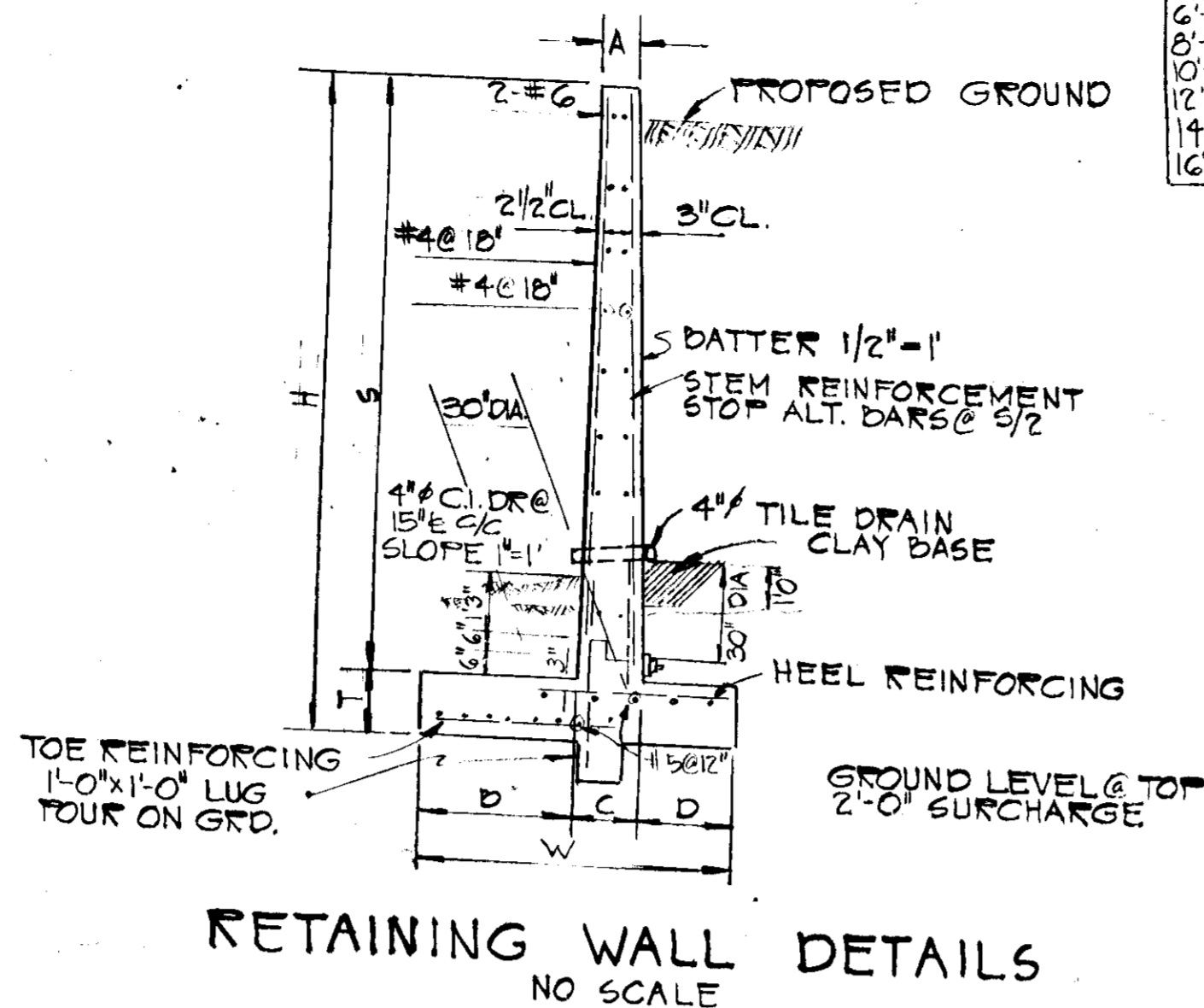
**ENGINEER'S STATEMENT**

I CERTIFY THAT THIS PLAN FOR EROSION AND SEDIMENT CONTROL REPRESENTS A PRACTICAL AND WORKABLE PLAN BASED ON MY PERSONAL KNOWLEDGE OF THE SITE CONDITIONS AND THAT IT WAS PREPARED IN ACCORDANCE WITH THE REQUIREMENTS OF THE HOWARD SOIL CONSERVATION DISTRICT. DATE: 4/17/75  
John Z. Schmitt

**DEVELOPER'S STATEMENT**

I CERTIFY THAT ALL THE DEVELOPMENT AND / OR CONSTRUCTION WILL BE DONE ACCORDING TO THIS PLAN OF DEVELOPMENT AND PLAN FOR EROSION AND SEDIMENT CONTROL, AND I ALSO AUTHORIZE PERIODIC ON-SITE INSPECTION BY THE HOWARD SOIL CONSERVATION DISTRICT OR THEIR AUTHORIZED AGENTS, AS AND DEEMED NECESSARY. DEVIATION FROM THIS PLAN WILL NOT BE MADE UNLESS AUTHORIZED BY THE HOWARD SOIL CONSERVATION DISTRICT. DATE: 4/17/75

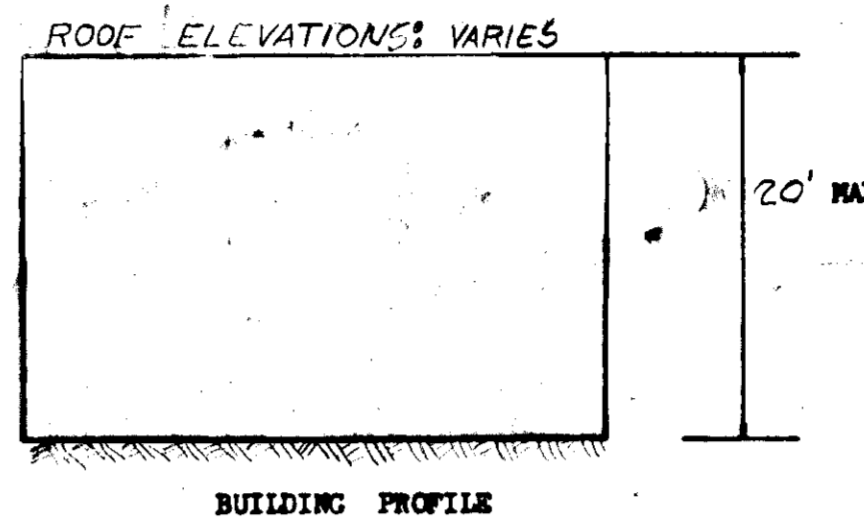
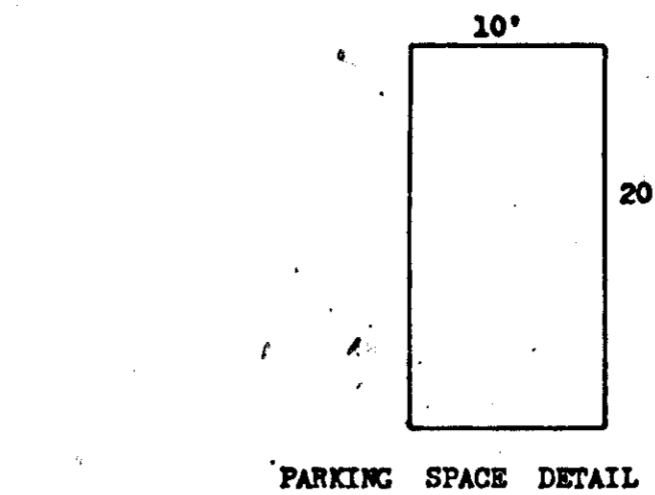
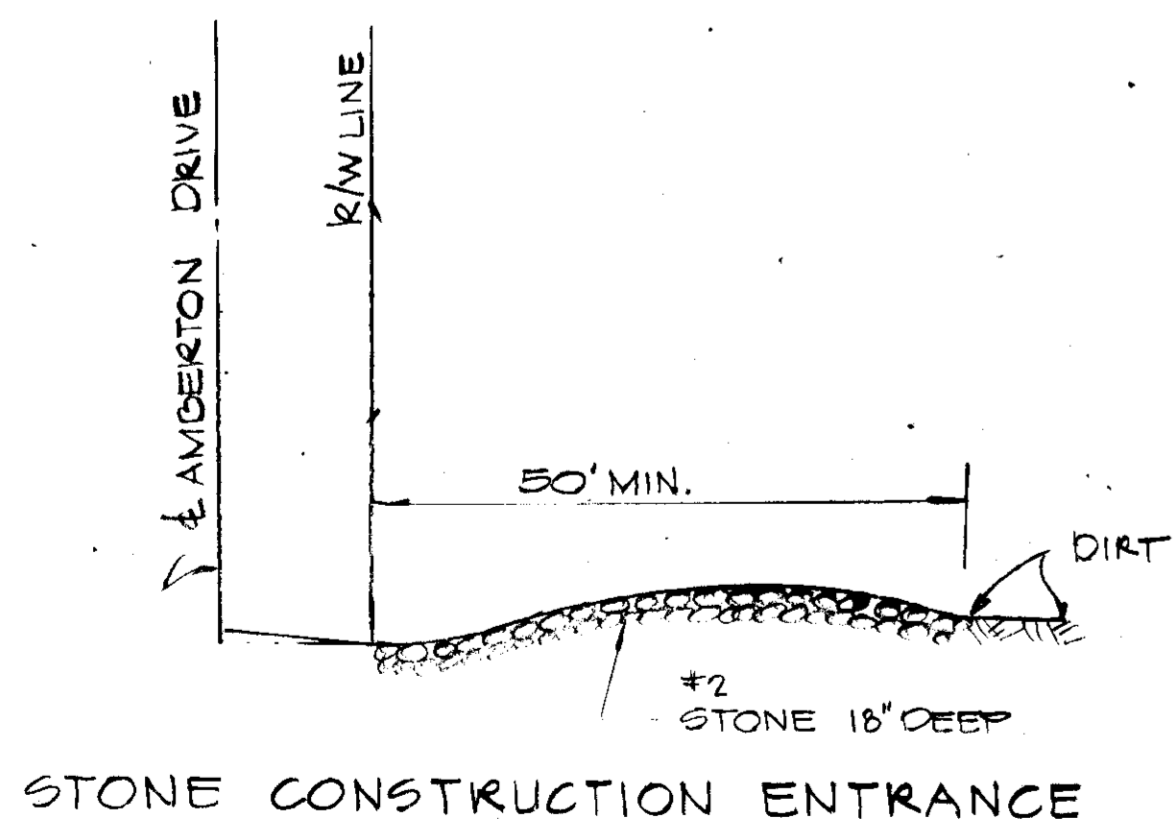
H	A	B	C	D	S	T	W	STEM REIN.	HEEL REIN.
6'-0"	1'-0"	1'-0"	1'-0"	1'-0"	4'-0"	1'-0"	2'-0"	1/2" @ 12" c/c	1/2" @ 12" c/c
8'-0"	1'-0"	2'-0"	1'-0"	1'-0"	4'-0"	1'-0"	2'-0"	1/2" @ 12" c/c	1/2" @ 12" c/c
10'-0"	1'-0"	2'-0"	1'-0"	1'-0"	4'-0"	1'-0"	2'-0"	1/2" @ 12" c/c	1/2" @ 12" c/c
12'-0"	1'-0"	2'-0"	1'-0"	1'-0"	4'-0"	1'-0"	2'-0"	1/2" @ 12" c/c	1/2" @ 12" c/c
14'-0"	1'-0"	2'-0"	1'-0"	1'-0"	4'-0"	1'-0"	2'-0"	1/2" @ 12" c/c	1/2" @ 12" c/c
16'-0"	1'-0"	2'-0"	1'-0"	1'-0"	4'-0"	1'-0"	2'-0"	1/2" @ 12" c/c	1/2" @ 12" c/c



CLEARING + GRADING ARTICLE C-1  
SUBGRADE ARTICLE C-2  
BASE COURSE ARTICLE C-25  
BINDER COURSE ARTICLE C-21 OR C-23  
SURFACE COURSE ARTICLE C-31

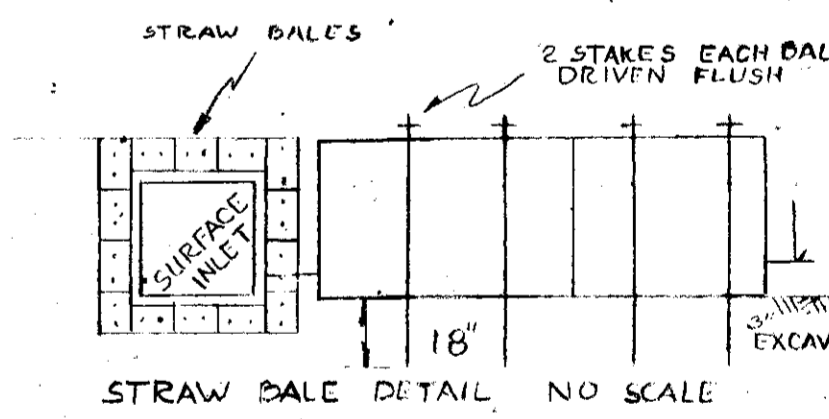
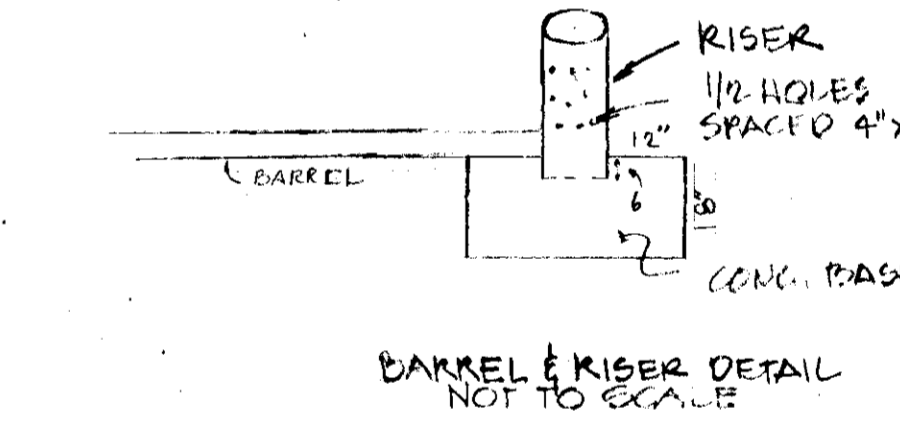
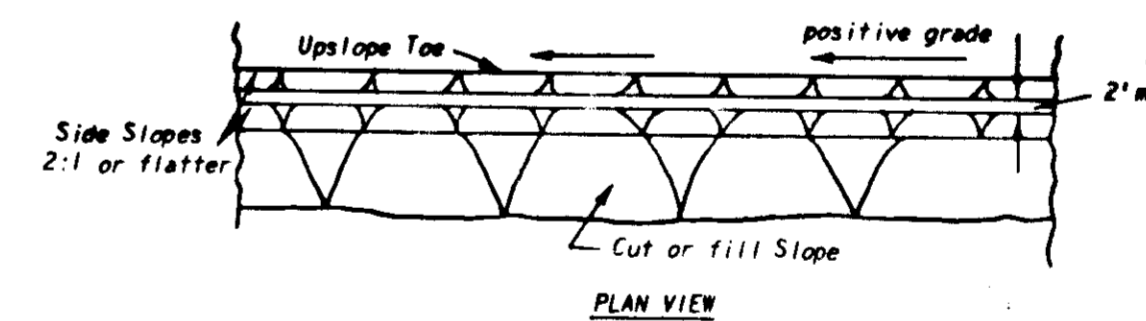
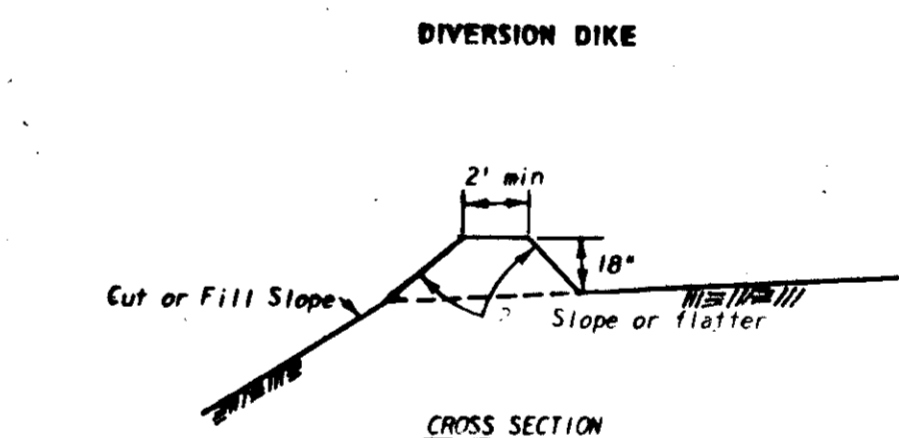
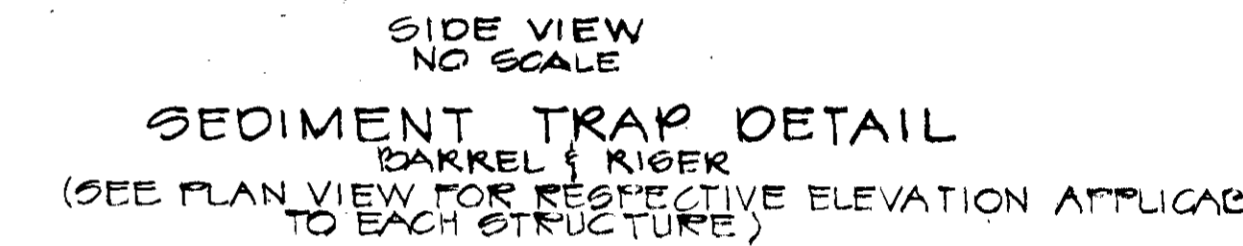
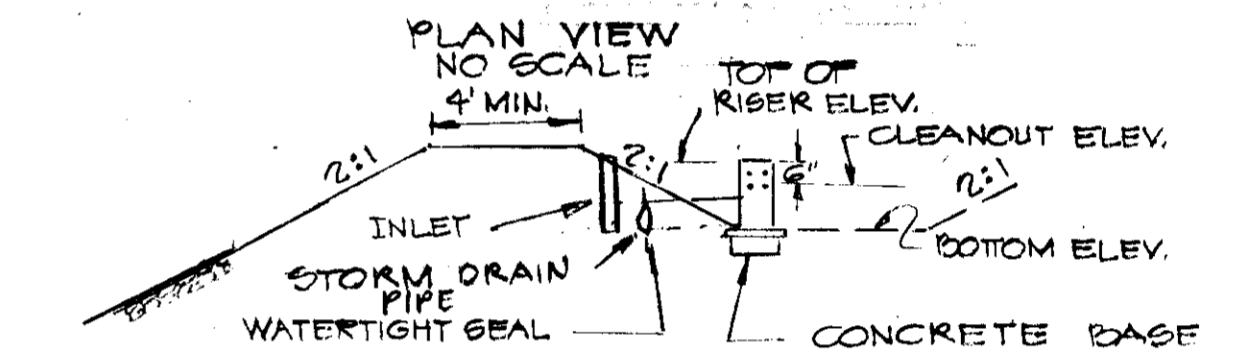
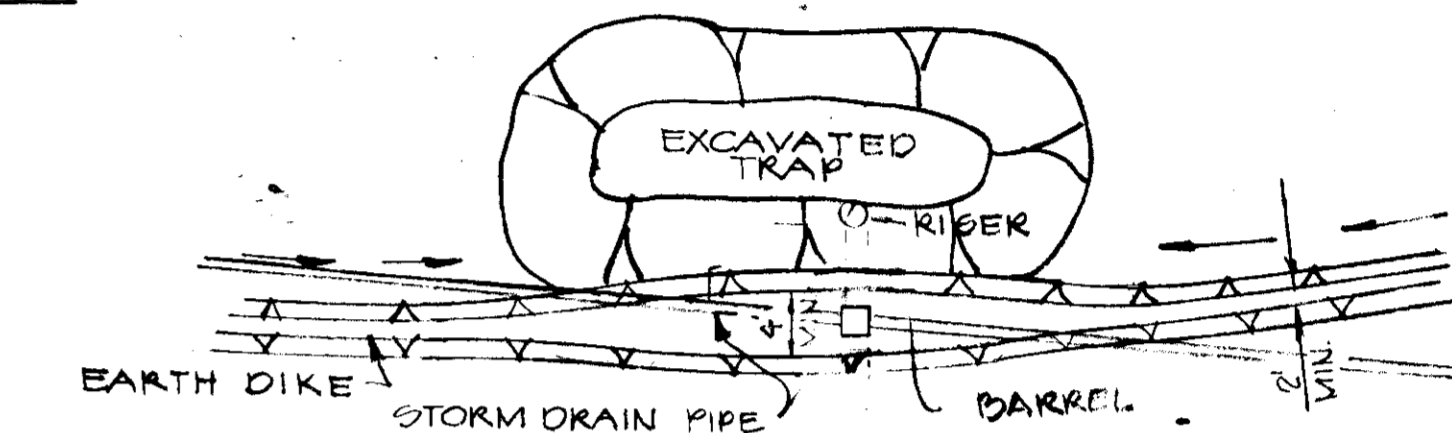
TO BE CONSTRUCTED IN ACCORDANCE WITH THE HOWARD COUNTY ROAD CONSTRUCTION CODE AND SPECIFICATIONS.

- PAVING SPECIFICATION**
- 1) BASE WILL BE PRIMED IN ACCORDANCE WITH SECTION C-31-3 AS PROVIDED IN THE HOWARD COUNTY ROAD CONSTRUCTION CODE AND STANDARD SPECIFICATIONS.
  - 2) TACK COAT IS REQUIRED IN ACCORDANCE WITH SECTION C-31-4 OF THE HOWARD COUNTY ROAD CONSTRUCTION CODE AND STANDARD SPECIFICATIONS.



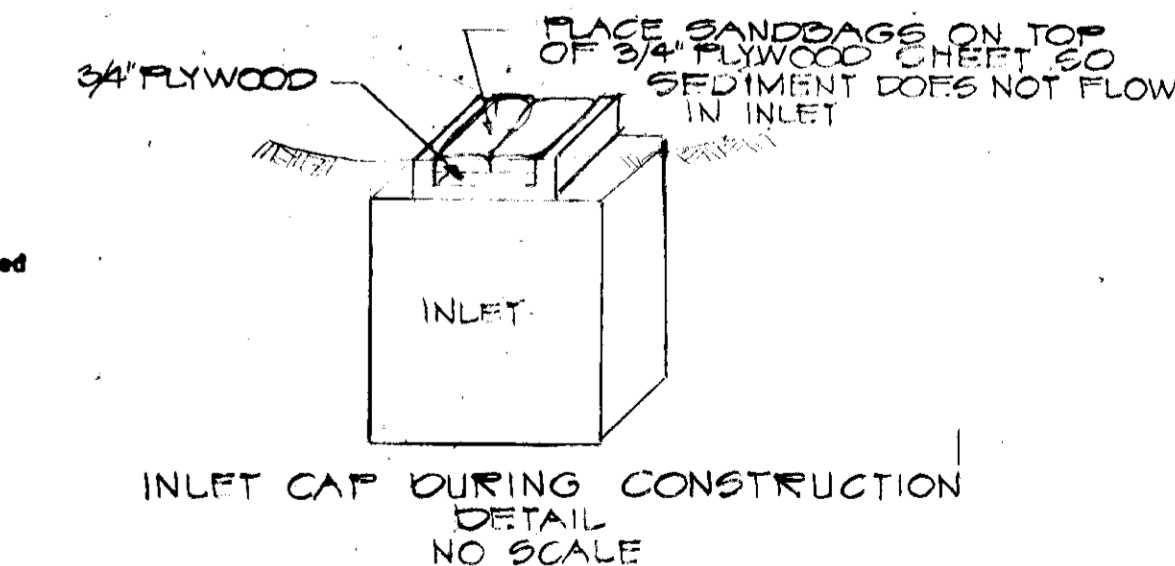
**ROOF ELEVATIONS**

BLDG 4	164.00
BLDG 5	183.00
BLDG 6	183.00



**General Notes:**

1. All drawings Not to Scale.
2. All dikes must be machine compacted.
3. All diversion dikes must have positive grade draining to a stabilized outlet.
4. Diverted runoff will outlet onto a stabilized undisturbed area, a prepared level spreader, or into a grade stabilization structure.
5. Periodic inspection and required maintenance must be provided.



APPROVED: John Z. Schmitt  
ENGINEER OF LAND DEVELOPMENT AND TRANSPORTATION PLANNING  
HOWARD COUNTY, MARYLAND  
DATE: 4/17/75

TITLE: <b>DETAIL SHEET</b>		ENGINEERING PLANNING SURVEYING BY: <b>BOENDER ASSOCIATES INC.</b>
PROJECT: ROUTE 100 BUSINESS PARK BLOCK 'B' PARCELS 'B' & 'D' TAX MAP 37, P. 124		ELLICOTT CITY, MD. 21043
LOCATION: 1ST ELECTION DISTRICT	HOWARD CO., MD.	301-486-7777
DATE: 8/23/74	DES. BY: —	DRAWN BY: TD
SCALE: AS SHOWN	JOB NO.: 7463	DRWG. NO.: 60FG