

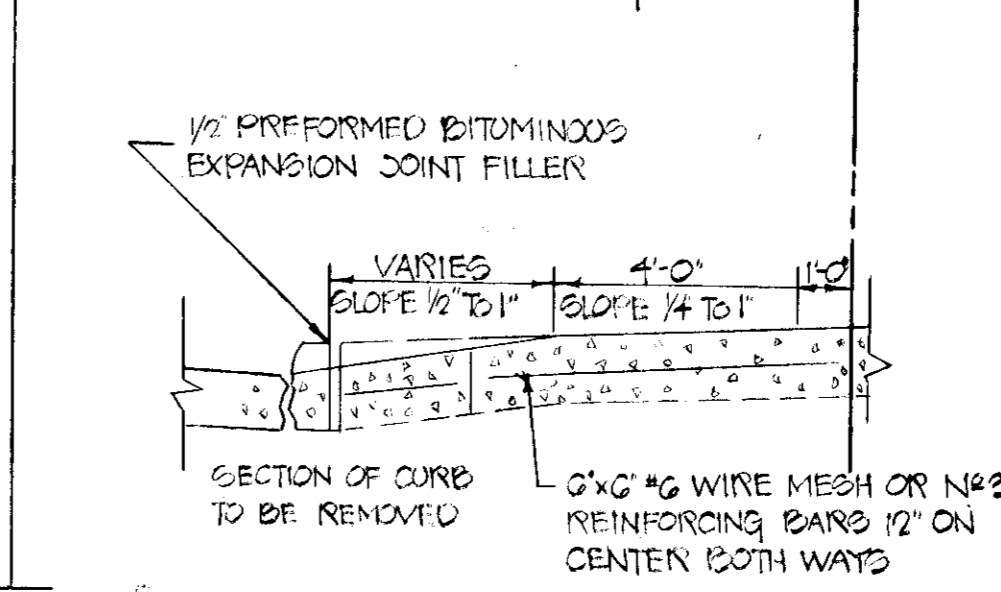
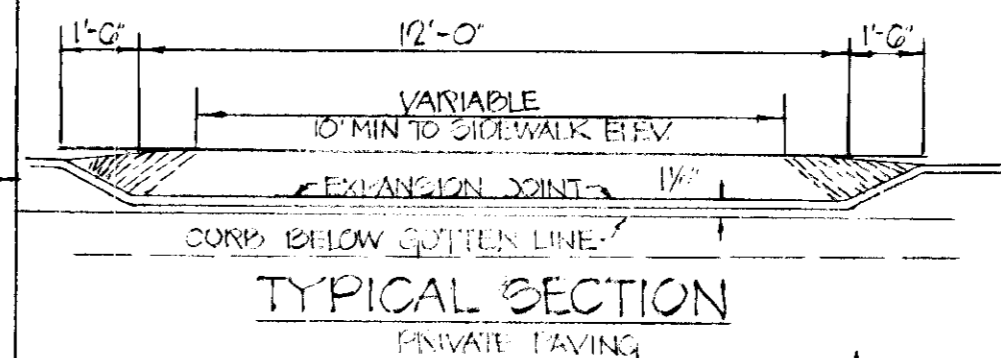
DENSITY CALCULATIONS

TOTAL NO OF RESIDENTIAL LOTS - 2
 TOTAL ACREAGE OF LOTS - 0.70 Ac ±
 TOTAL ACREAGE OF SUBMISSION - 0.70 Ac ±
 % COVERAGE - 15%

GENERAL NOTES

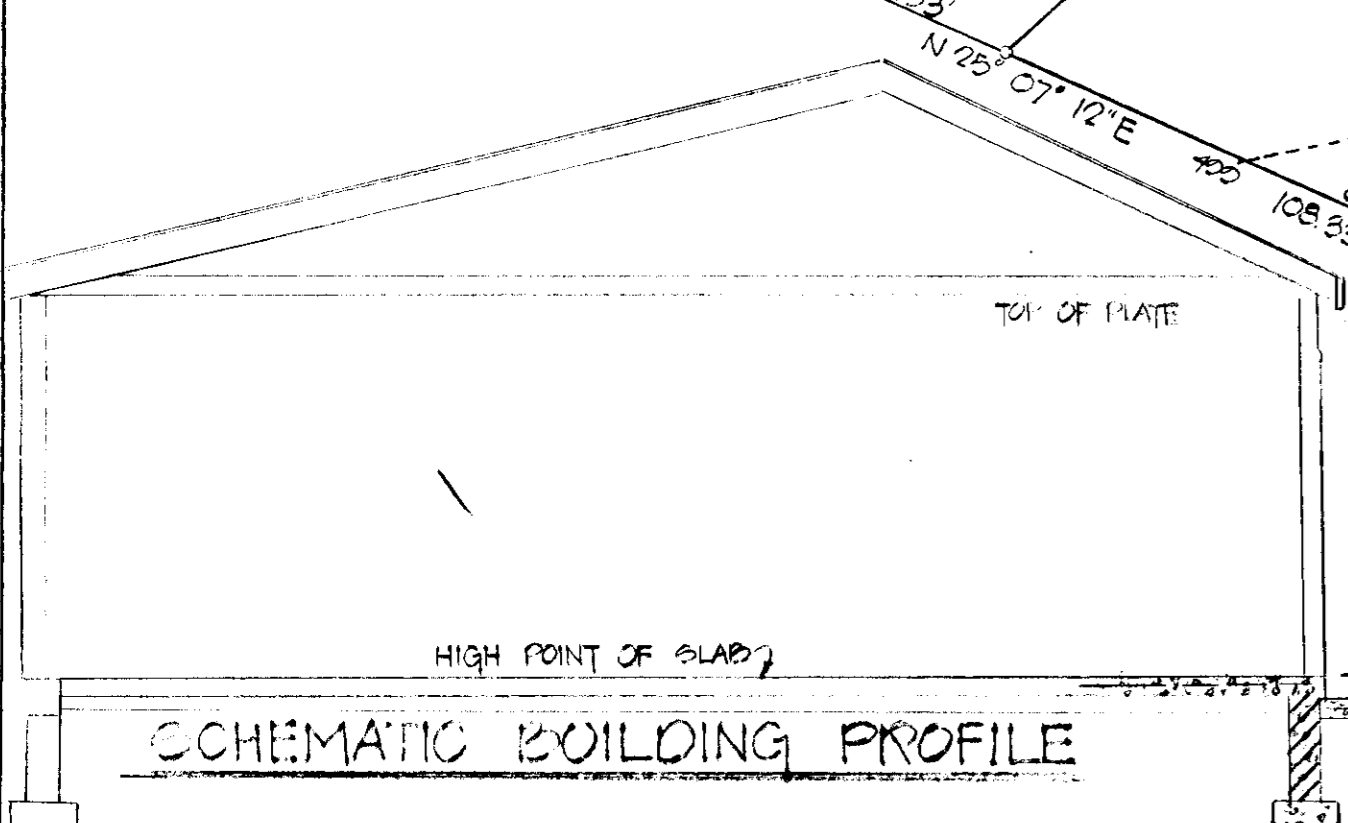
1. ALL MATERIALS AND CONSTRUCTION WILL BE IN ACCORDANCE WITH HOWARD COUNTY ROAD CONSTRUCTION CODE AND STANDARD SPECIFICATIONS.
2. BASE WILL BE PRIMED IN ACCORDANCE WITH SECTION C-30-3 AS PROVIDED IN THE HOWARD COUNTY ROAD CODE AND STANDARD SPECIFICATIONS.
3. TACK COAT IS REQUIRED IN ACCORDANCE WITH SECTION C-31-4 OF THE HOWARD COUNTY ROAD CONSTRUCTION CODE AND STANDARD SPECIFICATIONS.
4. PORTION OF DRIVEWAY BETWEEN CURB & RIGHT OF WAY LINE WILL BE MAINTAINED BY LAND OWNER OF LOT TO BE SERVED.
5. PRESENT ZONING - NEW TOWN - SINGLE FAMILY.
6. PROPOSED ZONING - NEW TOWN - SINGLE FAMILY.

NOTE: BUILDING PERMITS ON ENTIRE SITE INCLUDING LOTS 521 & 522 HAVE BEEN APPROVED AND ISSUED AND EROSION CONTROL HAS BEEN APPROVED BY HOWARD COUNTY (S.D.P. 73-125C). THIS PLAN TO CHANGE HOUSE TYPES ONLY ON LOTS 521 & 522 AND ADD GARAGE TO LOT 522.



**SITE PLAN
 "VILLAGE OF LONGFLEACH
 SECTION I - AREA I
 COLUMBIA
 LOTS 521 & 522
 PLAT BOOK 18 FOLIO 52
 6TH ELECTION DISTRICT HOWARD COUNTY MARYLAND
 SCALE 1"=20'**

APPROVED
 DIVISION OF LAND DEVELOPMENT
 AND TRANSPORTATION PLANNING
 HOWARD COUNTY, MARYLAND
 DATE 11/30/74



DATE 10/31/74
 S.B. Co.

APPROVED FOR PUBLIC WATER AND PUBLIC SEWERAGE SYSTEMS
 HOWARD COUNTY HEALTH DEPARTMENT
 COUNTY HEALTH OFFICER DATE 11/21/74
 APPROVED BY PLANNING COMMISSION DATE 11/21/74
 APPROVED FOR PUBLIC WATER, PUBLIC SEWERAGE AND STORM DRAINAGE SYSTEMS AND PUBLIC HOWARD COUNTY DEPARTMENT OF PUBLIC WORKS
 WILLIAM A. [Signature] DATE 11/19/74
 DIRECTOR
 CHIEF BUREAU OF HIGHWAYS

PROFESSIONAL ENGINEER
 I CERTIFY THAT THE PLAN FOR DESIGN AND CONSTRUCTION CONTROL IN PRESENTING A PRACTICAL AND WORKABLE PLAN BASED ON MY PERSONAL KNOWLEDGE OF THE SITE CONDITIONS AND THAT IT WAS PREPARED IN ACCORDANCE WITH THE REQUIREMENTS OF THE HOWARD COUNTY CONSERVATION DISTRICT
 SIGNATURE DATE

DEVELOPER
 I CERTIFY THAT ALL DEVELOPMENT AND/OR CONSTRUCTION WILL BE DONE ACCORDING TO THIS PLAN OF DEVELOPMENT AND PLAN FOR EROSION AND EQUIPMENT CONTROL AND I AUTHORIZE PERIODIC ON-SITE INSPECTION BY THE HOWARD COUNTY CONSERVATION DISTRICT OR THEIR AUTHORIZED AGENTS AS ARE FURNISHED HEREIN. ANY DEVIATION FROM THIS PLAN WILL NOT BE MADE UNLESS AUTHORIZED BY THE HOWARD COUNTY SOIL CONSERVATION DISTRICT
 SIGNATURE DATE

HOWARD SOIL CONSERVATION DISTRICT
 THIS DEVELOPMENT PLAN IS APPROVED BY SOIL EROSION AND EQUIPMENT CONTROL BY THE HOWARD SOIL CONSERVATION DISTRICT
 James M. [Signature] DATE 11-18-74
 Robert W. [Signature] DATE 11-18-74
 HOWARD COUNTY CONSERVATION DISTRICT

BART BUILDERS INC.
 225 1/2 EAST 80TH STREET
 BALTIMORE MARYLAND 21215
 REVISIONS:
 1. 11-21-74
 2. 11-21-74
 3. 11-21-74
 4. 11-21-74

PREPARED BY:
 HODKINS ASSOCIATES INC
 308 FIFTH SQUARE
 COLUMBIA MARYLAND
 21044