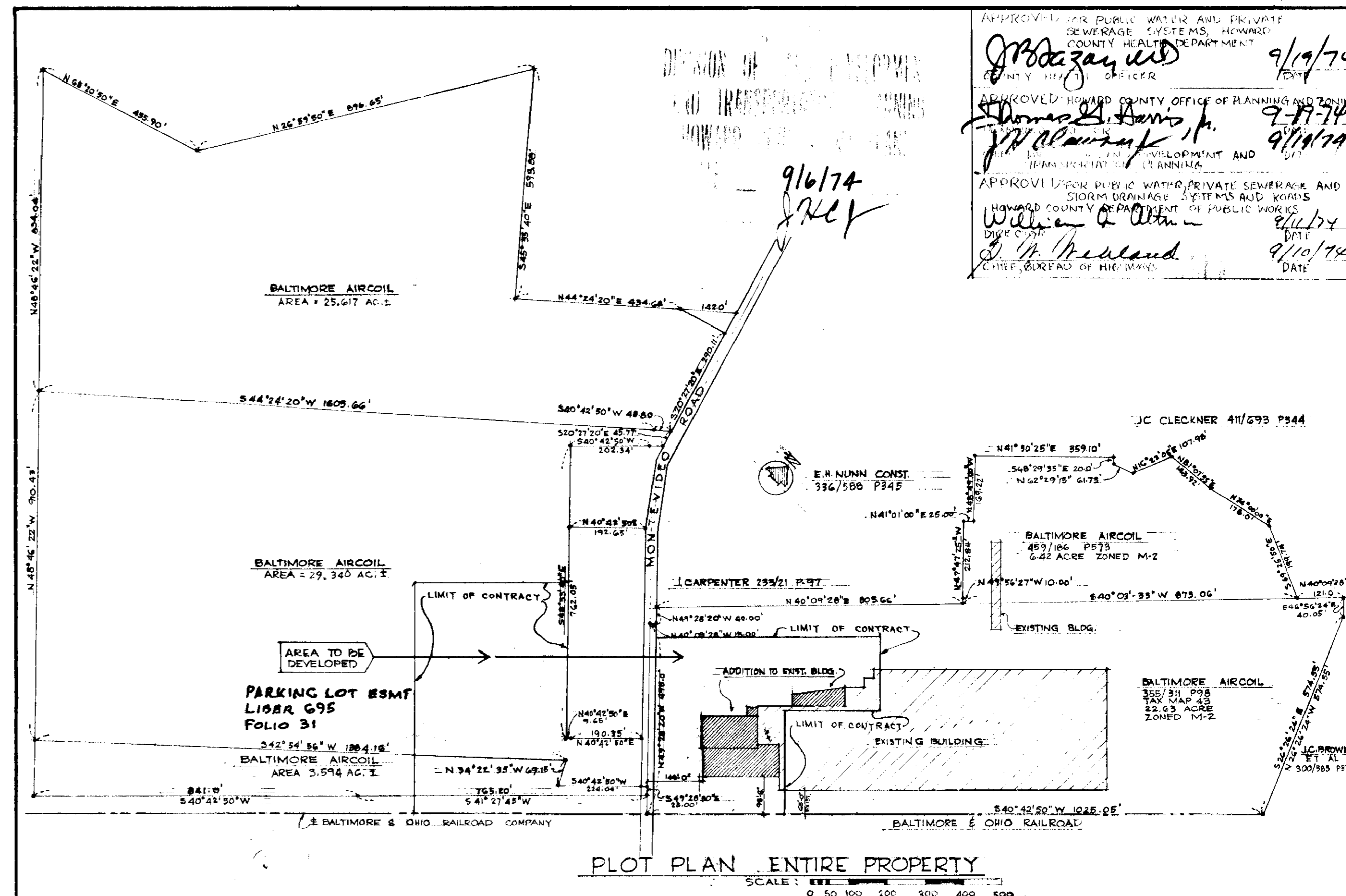


**NOTES**

PARKING REQUIRED = 1 SPACE PER TWO EMPLOYEES  
 EMPLOYEES = 300 PER SHIFT - MANUFACTURING  
 200 OFFICE STAFF  
 TOTAL = 500 EMPLOYEES  
 PARKING SPACES REQUIRED = 250  
 SPACES AVAILABLE = 300

AREA OF NEW CONSTRUCTION  
 TESTING LABS. 15,400 SQ. FT.  
 OFFICE = 12,000 PER FLOOR 3 FLOORS TOTAL = 36,000 SQ. FT.  
 RECEIVING = 5,500 SQ. FT.

SITE OF BUILDING ZONED M-2  
 AREA OF SITE BEING DEVELOPED OR GRADED:  
 NORTHEAST SIDE OF MONTEVIDEO ROAD 200,000 SQ. FT. = 4.65 ACRES  
 SOUTHWEST SIDE OF MONTEVIDEO ROAD 240,000 SQ. FT. = 5.50 ACRES  
 TOTAL NEW DEVELOPED AREA = 10.15 ACRES



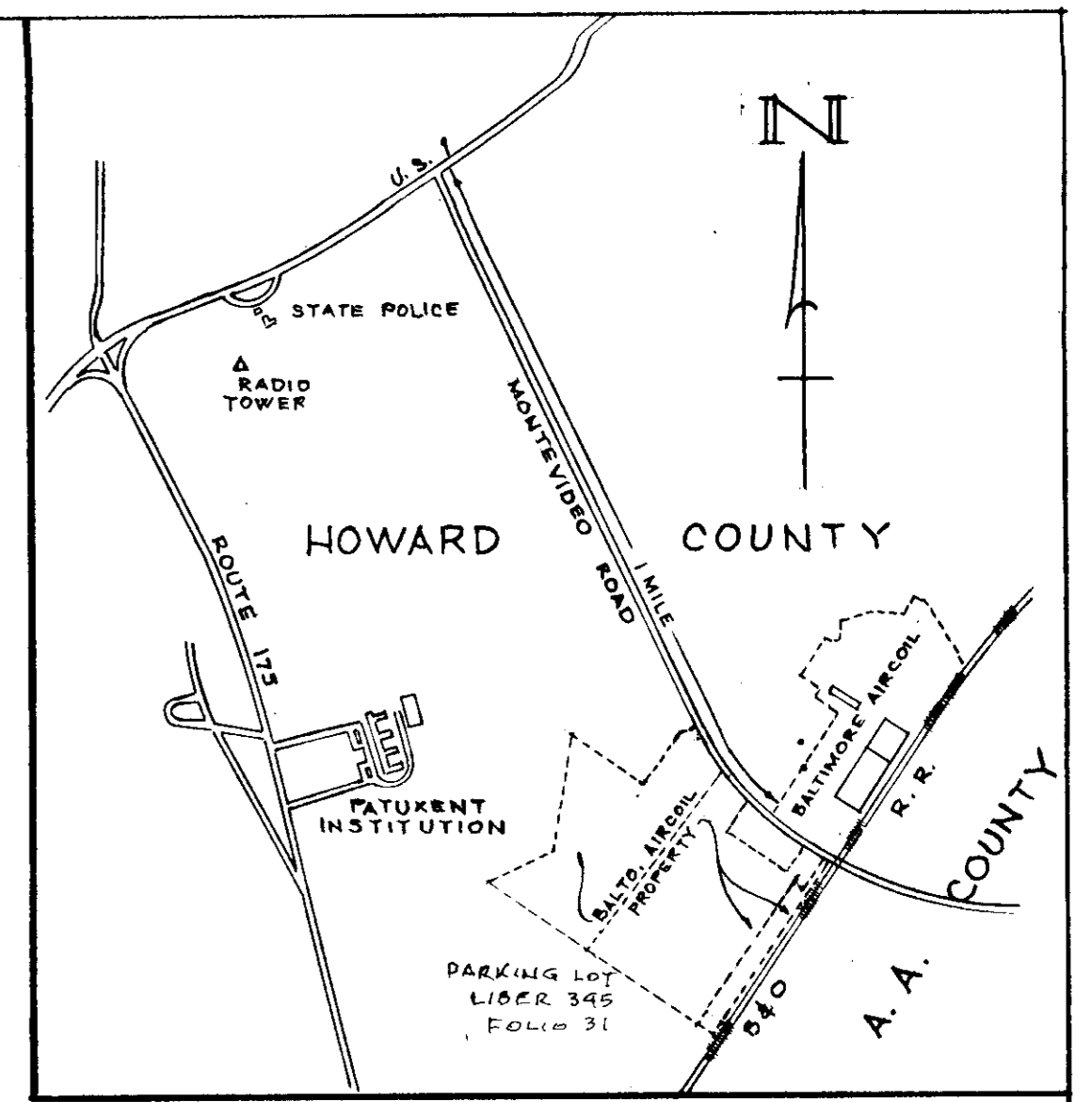
APPROVED FOR PUBLIC WATER AND SEWERAGE SYSTEMS, HOWARD COUNTY HEALTH DEPARTMENT  
 APPROVED FOR PUBLIC OFFICE OF PLANNING AND ZONING  
 APPROVED FOR PUBLIC WATER, PRIVATE SEWERAGE AND HOWARD COUNTY DEPARTMENT OF PUBLIC WORKS  
 APPROVED FOR PUBLIC WATER, PRIVATE SEWERAGE AND HOWARD COUNTY DEPARTMENT OF PUBLIC WORKS  
 DATE: 9/16/74

**PARTIAL PLOT PLAN**

**ADDITION TO OFFICE AND TESTING FACILITIES**  
 FOR  
**BALTIMORE AIRCOIL CO. INC.**  
 MONTEVIDEO ROAD  
 1ST ELECTION DISTRICT TAX MAP 45 MARYLAND

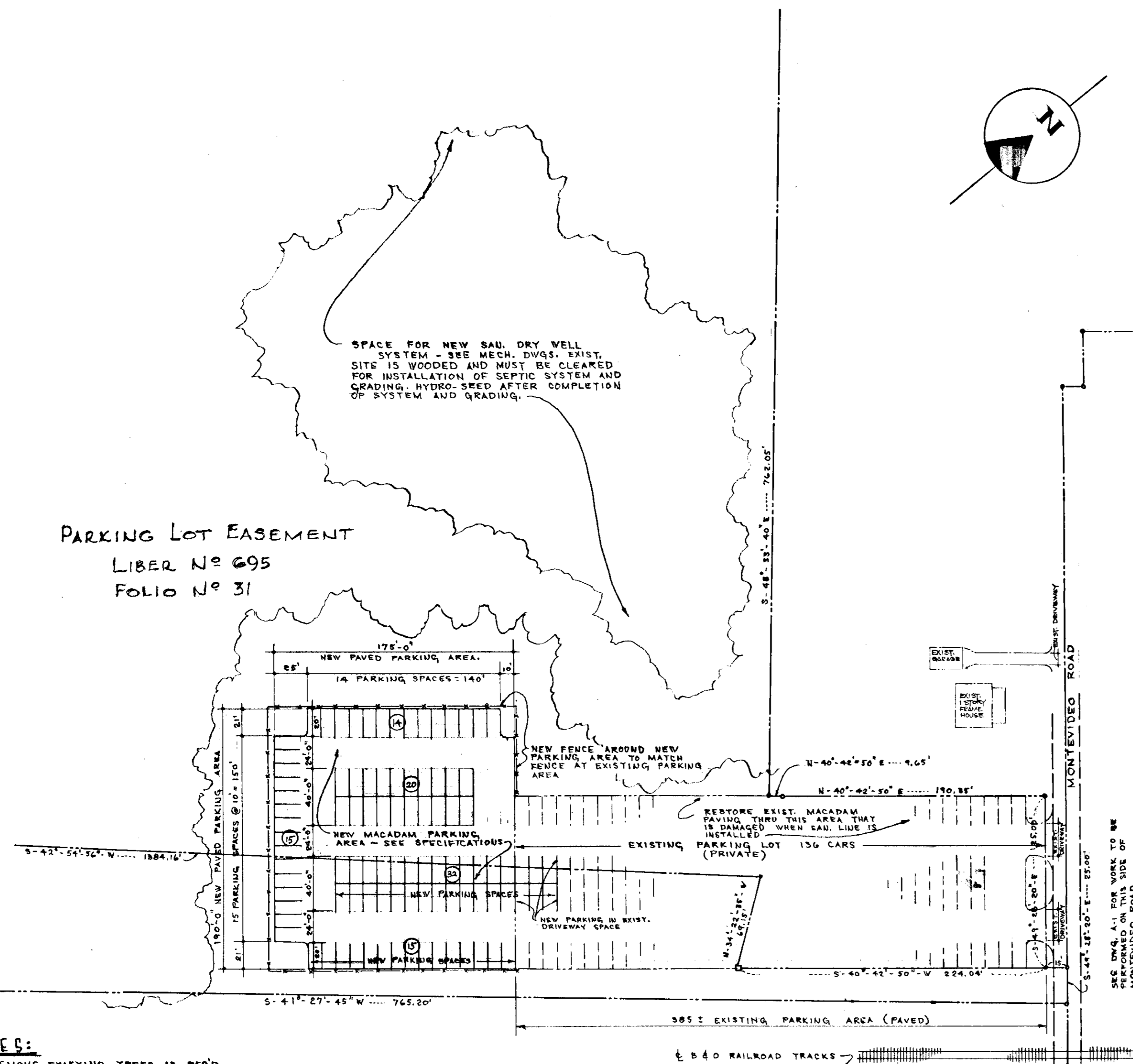
**BONNETT and BRANDT**  
 ARCHITECTS and ENGINEERS  
 515 PARK AVENUE  
 BALTIMORE, MARYLAND

SCALE: AS INDICATED  
 JOB NO. 682  
 DRAWING NO. A-1  
 OF 4

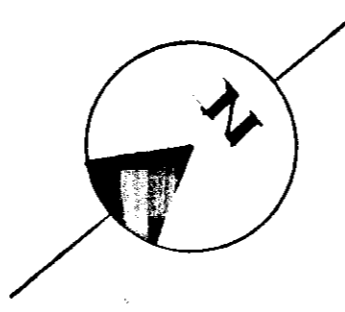


VICINITY MAP  
SCALE: 0 500 1000 1500

PARKING LOT EASEMENT  
LIBER N° 695  
FOLIO N° 31



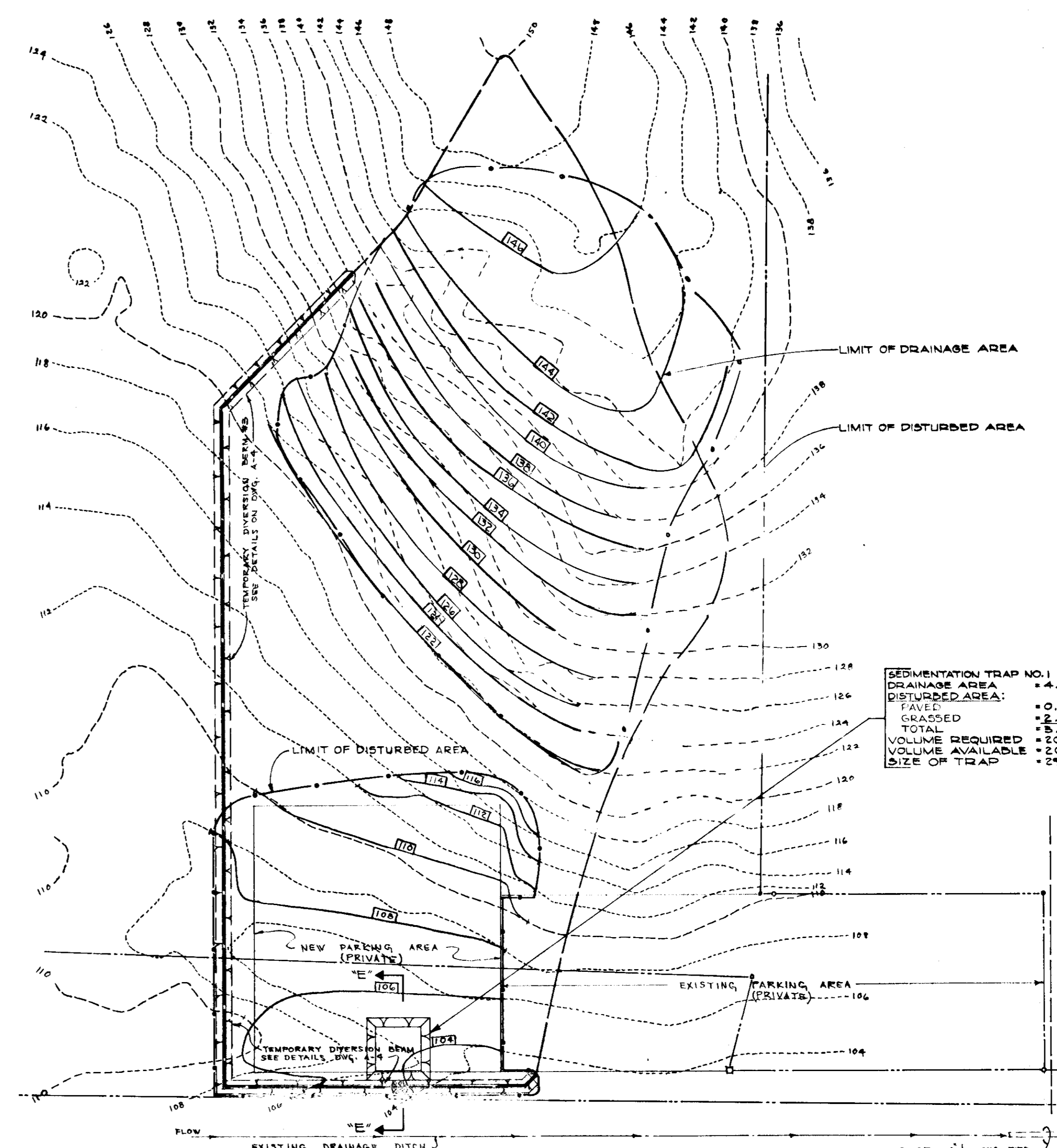
SPACE FOR NEW SAND DRY WELL SYSTEM - SEE MECH. DWGS. EXIST. SITE IS WOODED AND MUST BE CLEARED FOR INSTALLATION OF SEPTIC SYSTEM AND GRADING. HYDRO-SBED AFTER COMPLETION OF SYSTEM AND GRADING.



- NOTES:**
- 1) REMOVE EXISTING TREES AS REQ'D. IN THE AREA OF SEPTIC FIELD AND NEW PARKING AREA.
  - 2) HYDRO-SBED ALL EXPOSED EARTH AREAS WHEN PAVING AND UNDERGROUND UTILITY WORK IS COMPLETE.
  - 3) SEE DWG. A-1 FOR PLAT OF ENTIRE PROPERTY.

**ADDITION TO EXISTING PARKING LOT  
SOUTHWEST SIDE OF MONTEVIDEO ROAD**

SCALE: 0 10 20 40 60 80 100



SEDIMENTATION TRAP NO. 1	
DRAINAGE AREA	= 4.21 AC.
DISTURBED AREA:	
PAVEMENT	= 0.70 AC.
GRADED	= 2.25 AC.
TOTAL	= 3.05 AC.
VOLUME REQUIRED	= 202 CY.
VOLUME AVAILABLE	= 205 CY.
SIZE OF TRAP	= 24" x 27" x 4'

APPROVED FOR PUBLIC WATER AND PRIVATE SEWERAGE SYSTEMS, HOWARD COUNTY HEALTH DEPARTMENT  
*J. P. ...* 9/19/74

APPROVED HOWARD COUNTY OFFICE OF PLANNING AND ZONING  
*J. ...* 9-19-74

APPROVED FOR PUBLIC WATER PRIVATE SEWERAGE AND STORM DRAINAGE SYSTEMS AND ROADS, HOWARD COUNTY DEPARTMENT OF PUBLIC WORKS  
*W. ...* 9/19/74

DIVISION OF LAND DEVELOPMENT AND TRANSPORTATION PLANNING  
HOWARD COUNTY DEPARTMENT OF PUBLIC WORKS  
9/16/74  
*J. ...*

NOTE: SEE DWG. NO. A-4 FOR SEDIMENTATION CONTROL DETAILS, NOTES, CONSTRUCTION SEQUENCE ETC.

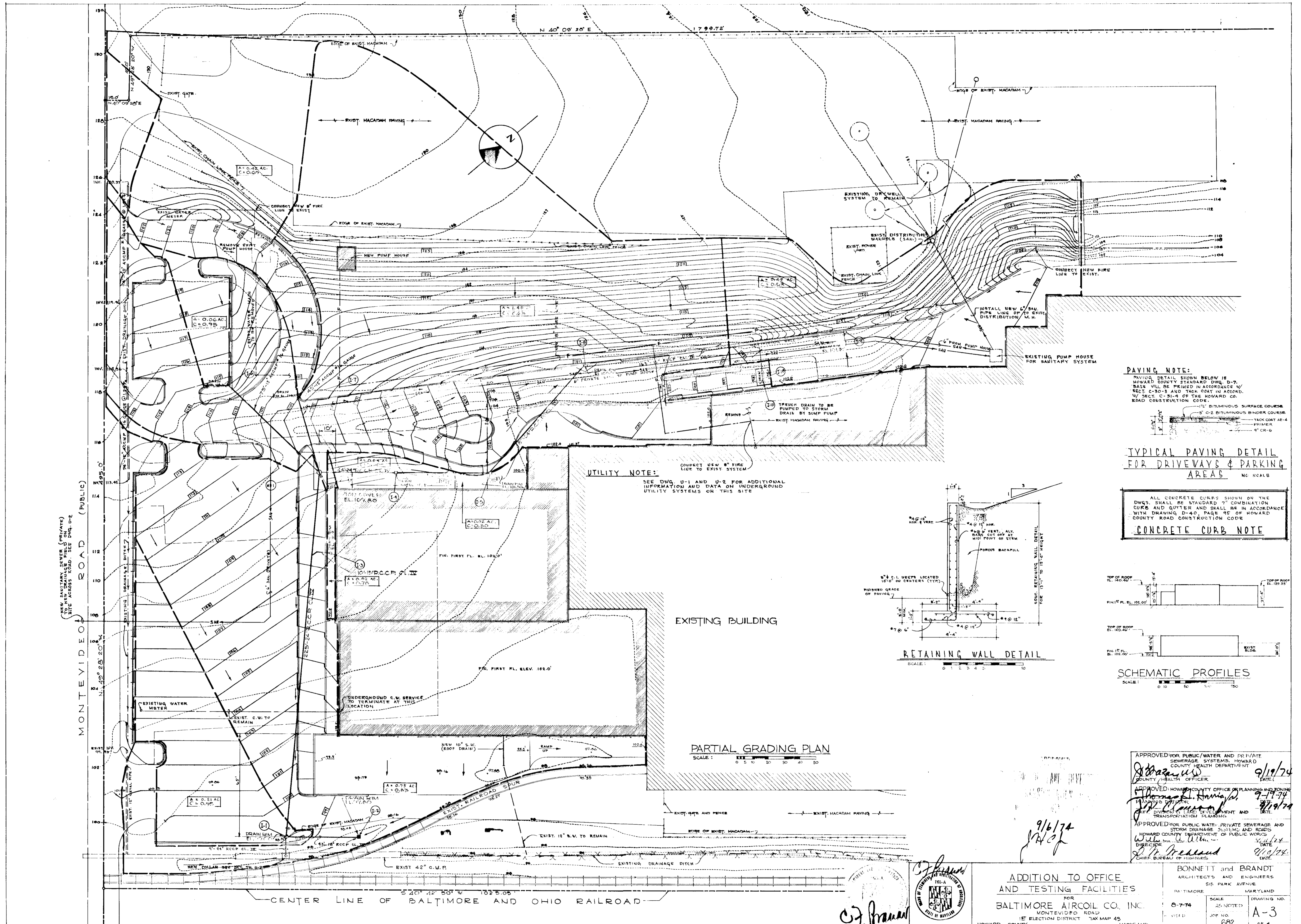
**PARTIAL GRADING PLAN  
SOUTHWEST SIDE OF MONTEVIDEO ROAD**

SCALE: 0 10 20 40 60 80 100

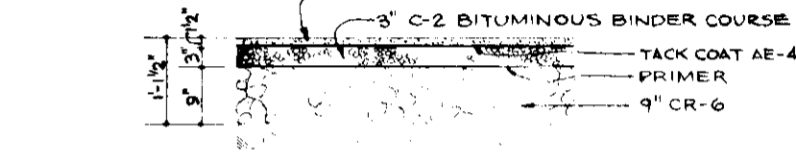


ADDITION TO OFFICE AND TESTING FACILITIES  
FOR  
BALTIMORE AIRCOIL CO INC.  
1ST ELECTION DISTRICT TAX MAP 43  
HOWARD COUNTY MARYLAND

BONNETT and BRANDT  
ARCHITECTS and ENGINEERS  
515 PARK AVENUE  
BALTIMORE MARYLAND  
DATE: JUNE 11, 1974  
SCALE: AS INDICATED  
DRAWING NO. A-2  
REVISED: JGR 11/82  
OF 4

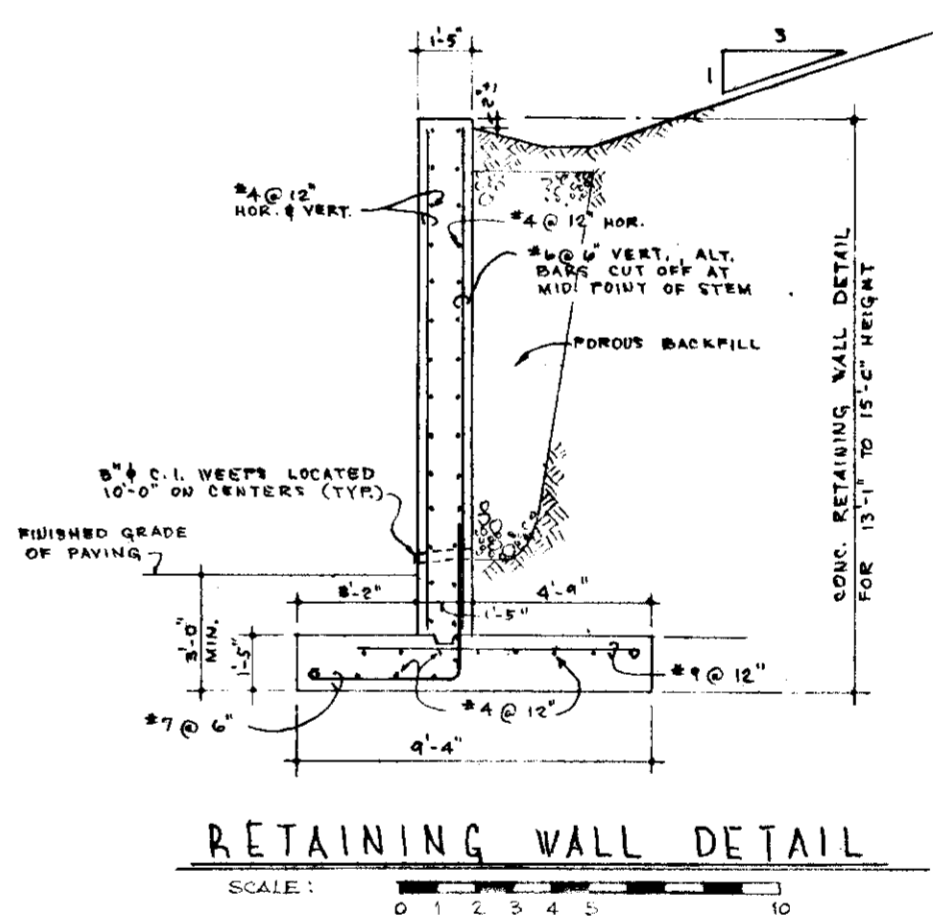


**PAVING NOTE:**  
 PAVING DETAIL SHOWN BELOW IS HOWARD COUNTY STANDARD DWG. D-7. BASE WILL BE PRIMED IN ACCORDANCE W/ SECT. C-30-3 AND TACK COAT IN ACCORD. W/ SECT. C-31-4 OF THE HOWARD CO. ROAD CONSTRUCTION CODE.

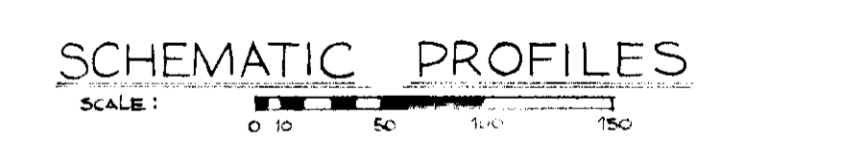


**TYPICAL PAVING DETAIL FOR DRIVEWAYS & PARKING AREAS**  
 NG SCALE

**CONCRETE CURB NOTE**  
 ALL CONCRETE CURBS SHOWN ON THE DWG'S SHALL BE STANDARD 7" COMBINATION CURB AND GUTTER AND SHALL BE IN ACCORDANCE WITH DRAWING D-40, PAGE 95 OF HOWARD COUNTY ROAD CONSTRUCTION CODE



**RETAINING WALL DETAIL**  
 SCALE: 1" = 10'



**SCHEMATIC PROFILES**  
 SCALE: 1" = 10'

**PARTIAL GRADING PLAN**  
 SCALE: 1" = 10'

APPROVED FOR PUBLIC WATER AND PRIVATE SEWERAGE SYSTEMS, HOWARD COUNTY HEALTH DEPARTMENT  
 COUNTY HEALTH OFFICER  
 DATE: 9/19/74

APPROVED: HOWARD COUNTY OFFICE OF PLANNING AND ZONING  
 PLANNING OFFICER  
 DATE: 9-19-74

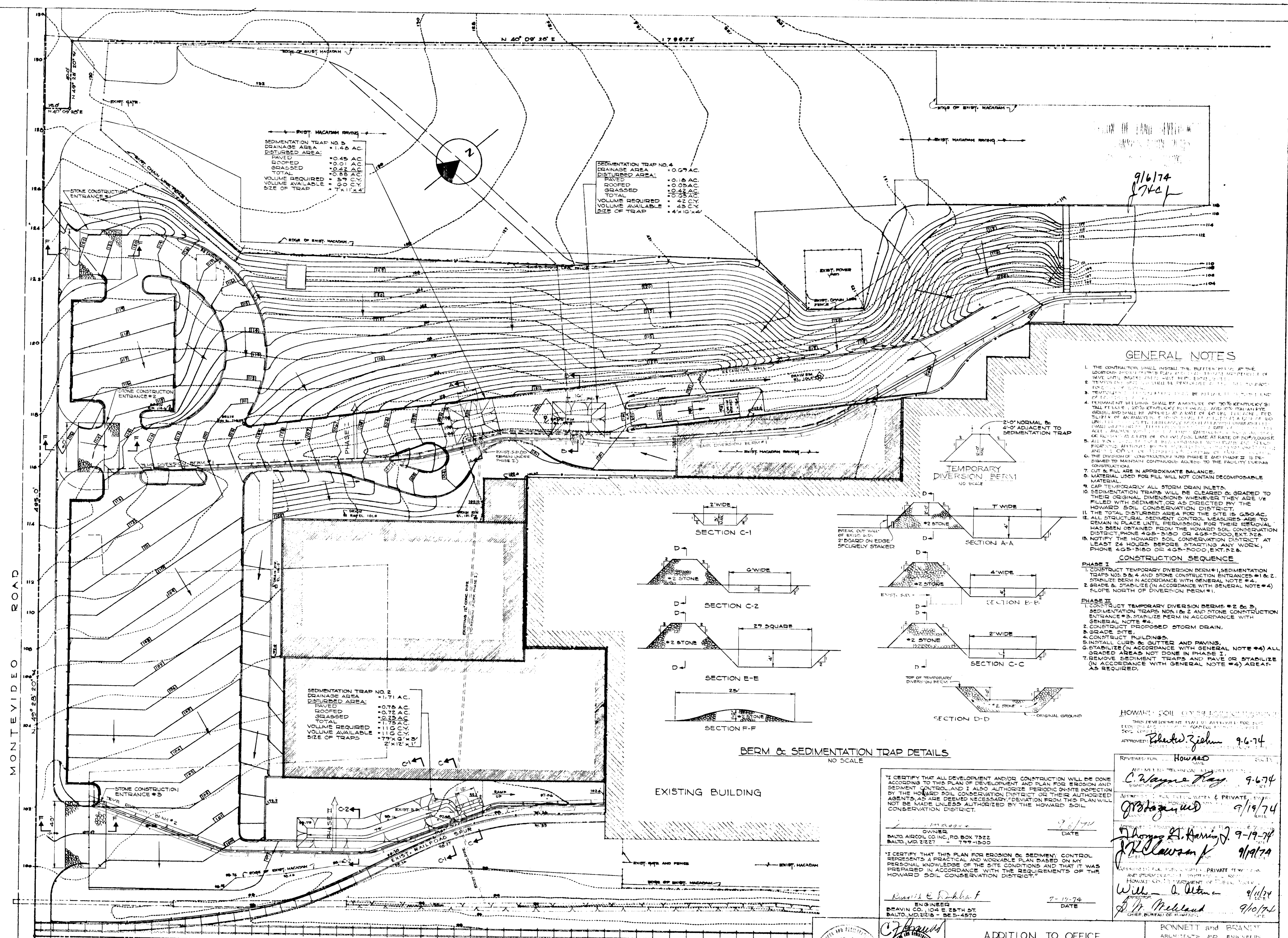
APPROVED FOR PUBLIC WATER, PRIVATE SEWERAGE AND STORM DRAINAGE SYSTEMS AND ROADS  
 HOWARD COUNTY DEPARTMENT OF PUBLIC WORKS  
 DIRECTOR  
 DATE: 9/19/74

APPROVED FOR PUBLIC WATER, PRIVATE SEWERAGE AND STORM DRAINAGE SYSTEMS AND ROADS  
 HOWARD COUNTY DEPARTMENT OF PUBLIC WORKS  
 CHIEF BUREAU OF HIGHWAYS  
 DATE: 9/19/74

**BONNETT and BRANDT**  
 ARCHITECTS and ENGINEERS  
 515 PARK AVENUE  
 BALTIMORE, MARYLAND

**ADDITION TO OFFICE AND TESTING FACILITIES**  
 FOR  
**BALTIMORE AIRCOIL CO. INC.**  
 1<sup>ST</sup> ELECTION DISTRICT TAK MAP 43  
 HOWARD COUNTY, MARYLAND

SCALE: AS NOTED  
 JOB NO. 682  
 DRAWING NO. A-3  
 OF 4



SEDIMENTATION TRAP NO. 3  
 DRAINAGE AREA: 1.66 AC.  
 DISTURBED AREA:  
 PAVED: 0.45 AC.  
 ROOFED: 0.01 AC.  
 GRASSED: 0.44 AC.  
 TOTAL: 0.90 AC.  
 VOLUME REQUIRED: 68 C.Y.  
 VOLUME AVAILABLE: 71 C.Y.  
 SIZE OF TRAP: 7' x 12' x 4'

SEDIMENTATION TRAP NO. 4  
 DRAINAGE AREA: 0.97 AC.  
 DISTURBED AREA:  
 PAVED: 0.18 AC.  
 ROOFED: 0.05 AC.  
 GRASSED: 0.42 AC.  
 TOTAL: 0.65 AC.  
 VOLUME REQUIRED: 42 C.Y.  
 VOLUME AVAILABLE: 45 C.Y.  
 SIZE OF TRAP: 4' x 10' x 4'

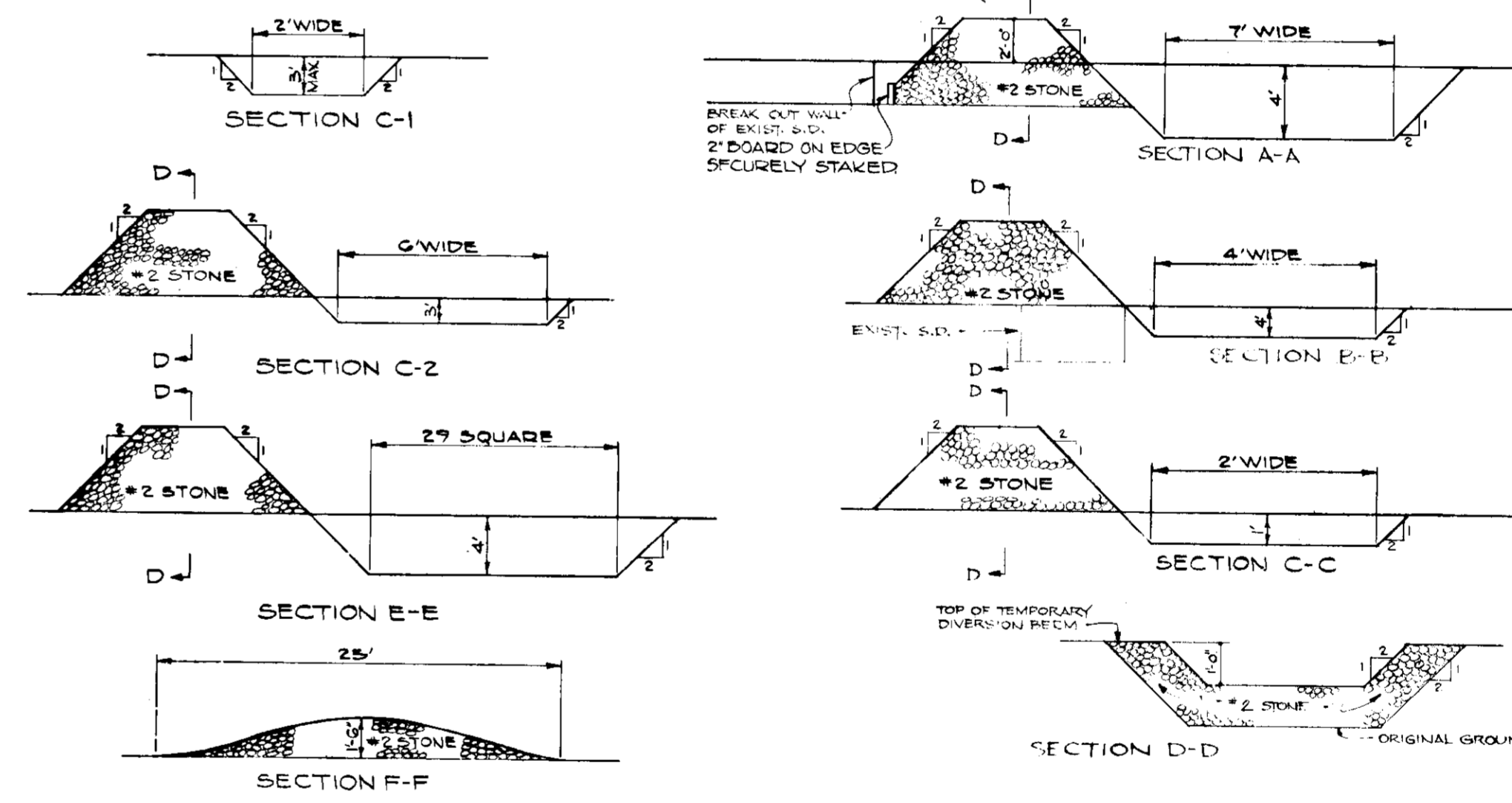
SEDIMENTATION TRAP NO. 2  
 DRAINAGE AREA: 1.71 AC.  
 DISTURBED AREA:  
 PAVED: 0.75 AC.  
 ROOFED: 0.75 AC.  
 GRASSED: 0.21 AC.  
 TOTAL: 1.71 AC.  
 VOLUME REQUIRED: 110 C.Y.  
 VOLUME AVAILABLE: 77 C.Y.  
 SIZE OF TRAPS: 7' x 12' x 4'

**GENERAL NOTES**

1. THE CONTRACTOR SHALL INSTALL THE BERM AT THE LOCATION SHOWN ON THIS PLAN AND SHALL MAINTAIN IT UNTIL THE DISTURBED AREA IS RESTORED TO ORIGINAL CONDITION.
2. TEMPORARY DIVERSION BERMS SHALL BE CONSTRUCTED TO MAINTAIN EXISTING DRAINAGE PATTERNS.
3. TEMPORARY DIVERSION BERMS SHALL BE CONSTRUCTED TO MAINTAIN EXISTING DRAINAGE PATTERNS.
4. TEMPORARY DIVERSION BERMS SHALL BE CONSTRUCTED TO MAINTAIN EXISTING DRAINAGE PATTERNS.
5. ALL STRUCTURAL SEDIMENT CONTROL MEASURES ARE TO REMAIN IN PLACE UNTIL PERMISSIVE FOR THEIR REMOVAL HAS BEEN OBTAINED FROM THE HOWARD SOIL CONSERVATION DISTRICT AT LEAST 24 HOURS BEFORE STARTING ANY WORK.

**CONSTRUCTION SEQUENCE**

- PHASE I**
1. CONSTRUCT TEMPORARY DIVERSION BERM #1, SEDIMENTATION TRAP NO. 1 & 2 AND STONE CONSTRUCTION ENTRANCES #1 & 2.
  2. STABILIZE BERM IN ACCORDANCE WITH GENERAL NOTE #4.
  3. GRADE & STABILIZE IN ACCORDANCE WITH GENERAL NOTE #4.
  4. GRADE NORTH OF DIVERSION BERM #1.
- PHASE II**
1. CONSTRUCT TEMPORARY DIVERSION BERMS #2 & 3.
  2. CONSTRUCT SEDIMENTATION TRAP NO. 3 AND STONE CONSTRUCTION ENTRANCE #3.
  3. STABILIZE BERM IN ACCORDANCE WITH GENERAL NOTE #4.
  4. GRADE SITE.
  5. GRADE SITE.
  6. CONSTRUCT BUILDINGS.
  7. INSTALL CURB & GUTTER AND PAVING.
  8. STABILIZE (IN ACCORDANCE WITH GENERAL NOTE #4) ALL GRADED AREAS NOT DONE IN PHASE I.
  9. REMOVE SEDIMENTATION TRAPS AND PAVE OR STABILIZE (IN ACCORDANCE WITH GENERAL NOTE #4) AREAS AS REQUIRED.



**BERM & SEDIMENTATION TRAP DETAILS**  
 NO SCALE

EXISTING BUILDING

I CERTIFY THAT ALL DEVELOPMENT AND/OR CONSTRUCTION WILL BE DONE ACCORDING TO THIS PLAN OF DEVELOPMENT AND PLAN FOR EROSION AND SEDIMENT CONTROL, AND I ALSO AUTHORIZE PERIODIC ON-SITE INSPECTION BY THE HOWARD SOIL CONSERVATION DISTRICT OR THEIR AUTHORIZED AGENTS, AS ARE DEEMED NECESSARY, DEVIATION FROM THIS PLAN WILL NOT BE MADE UNLESS AUTHORIZED BY THE HOWARD SOIL CONSERVATION DISTRICT.

OWNER  
 BALTO AIRCOOL CO. INC., PO BOX 7522  
 BALTO, MD. 21227

DATE: 9/6/74

ENGINEER  
 Russell E. Dickhaut  
 BRAVIN CO., 1104 E 25TH ST.  
 BALTO, MD. 21218 - BE 5-4570

DATE: 7-17-74

HOWARD SOIL CONSERVATION DISTRICT  
 THIS DEVELOPMENT PLAN IS APPROVED FOR THE DISTRICT'S SOIL CONSERVATION DISTRICT.

APPROVED: Robert Ziehm 9-6-74

REVIEWED BY: HOWARD SOIL CONSERVATION DISTRICT

APPROVED: C. Wayne Ray 9-6-74

APPROVED: J. St. James 9-19-74

APPROVED: J. H. Lawson 9/19/74

APPROVED: Will A. Utner 9/19/74

APPROVED: J. H. McLeod 9/10/74

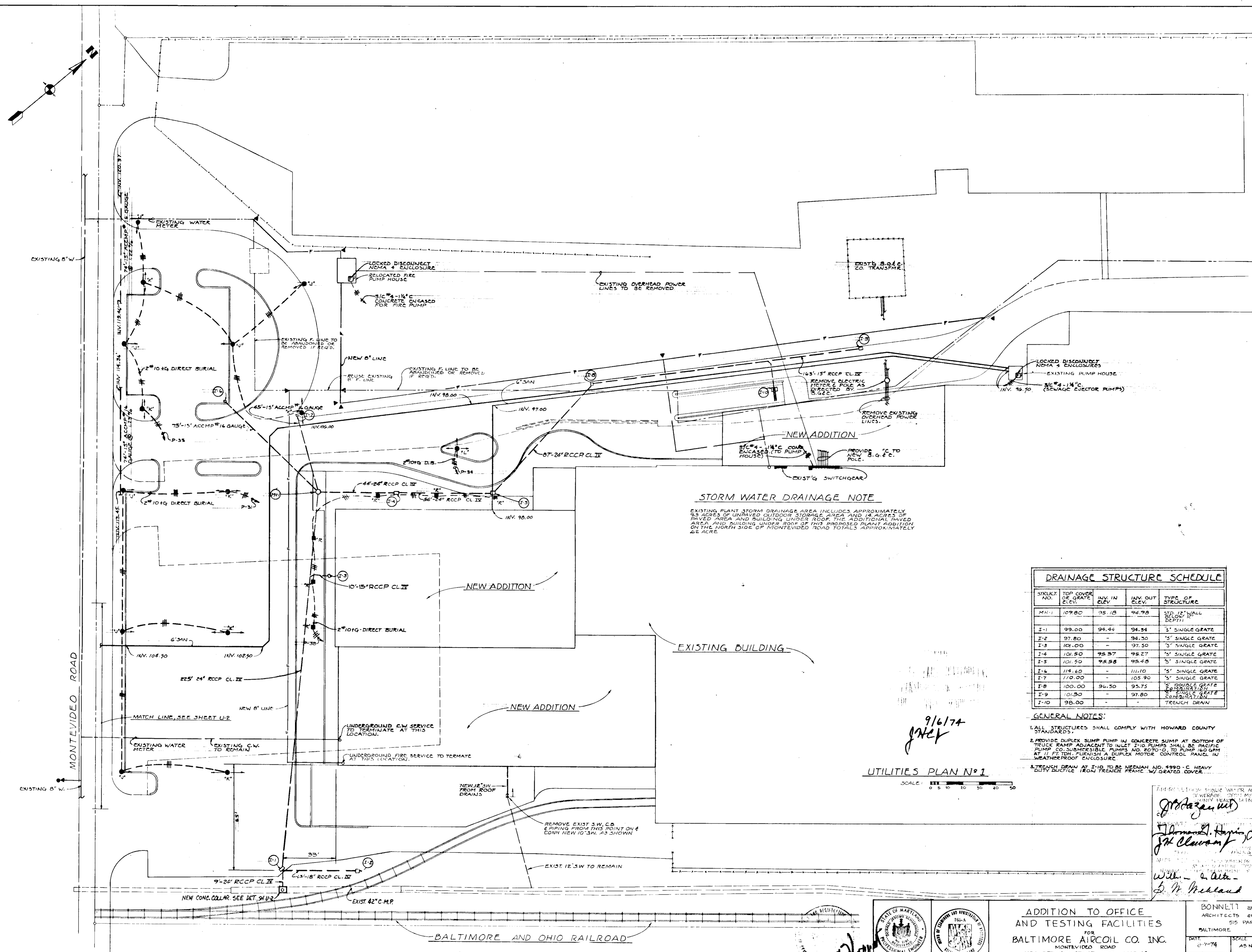
ADDITION TO OFFICE AND TESTING FACILITIES  
 FOR  
 BALTIMORE AIRCOOL CO. INC.  
 187 ELECTION DISTRICT TAK MAP 48  
 HOWARD COUNTY MARYLAND

REVISIONS:  
 NO. 1: 8-7-74  
 NO. 2: 9-10-74

DATE: 9/10/74

BY: [Signature]

SCALE: 1" = 20'



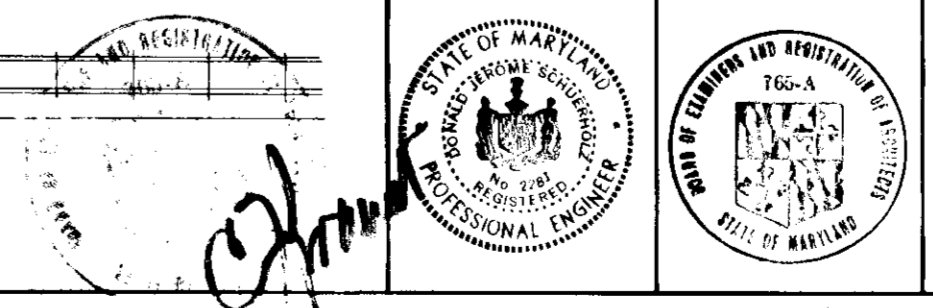
**STORM WATER DRAINAGE NOTE**  
 EXISTING PLANT STORM DRAINAGE AREA INCLUDES APPROXIMATELY 9.3 ACRES OF UNPAVED OUTDOOR STORAGE AREA AND 14 ACRES OF PAVED AREA AND BUILDING UNDER ROOF. THE ADDITIONAL PAVED AREA AND BUILDING UNDER ROOF OF THIS PROPOSED PLANT ADDITION ON THE NORTH SIDE OF MONTEVIDEO ROAD TOTALS APPROXIMATELY 26 ACRE.

STRUCT. NO.	TOP COVER OR GRATE ELEV.	INV. IN	INV. OUT	TYPE OF STRUCTURE
MH-1	109.80	95.18	94.98	STD. 12" WALL BELOW 12" DEPTH
I-1	99.00	94.44	94.54	5' SINGLE GRATE
I-2	97.80	-	94.30	5' SINGLE GRATE
I-3	108.00	-	97.50	5' SINGLE GRATE
I-4	101.50	95.97	95.27	5' SINGLE GRATE
I-5	101.50	95.98	95.48	5' SINGLE GRATE
I-6	114.60	-	111.10	5' SINGLE GRATE
I-7	110.00	-	105.90	5' SINGLE GRATE
I-8	100.00	96.50	95.75	5' DOUBLE GRATE
I-9	101.50	-	97.80	5' SINGLE GRATE
I-10	98.00	-	-	TRENCH DRAIN

**GENERAL NOTES:**  
 1. ALL STRUCTURES SHALL COMPLY WITH HOWARD COUNTY STANDARDS.  
 2. PROVIDE DUPLEX SUMP PUMP IN CONCRETE SUMP AT BOTTOM OF TRENCH RAMP ADJACENT TO INLET. 3-10 PUMPS SHALL BE PACIFIC PUMP CO. SUBMERSIBLE PUMPS NO. 8070-0. TO PUMP 160 GPM AT 11 FT. TDH. FURNISH A DUPLEX MOTOR CONTROL PANEL IN WEATHERPROOF ENCLOSURE.  
 3. TRENCH DRAIN AT I-10 TO BE MEEHAN NO. 4990 - C HEAVY DUTY DUCTILE IRON TRENCH FRAME W/ GRATED COVER.

**UTILITIES PLAN #1**  
 SCALE: 1" = 10'

9/6/74  
 JHC  
 J. H. HARRIS, JR. 9/19/74  
 J. H. HARRIS, JR. 9/19/74  
 W. H. ALLEN 9/11/74  
 S. H. MEEHAN 9/10/74

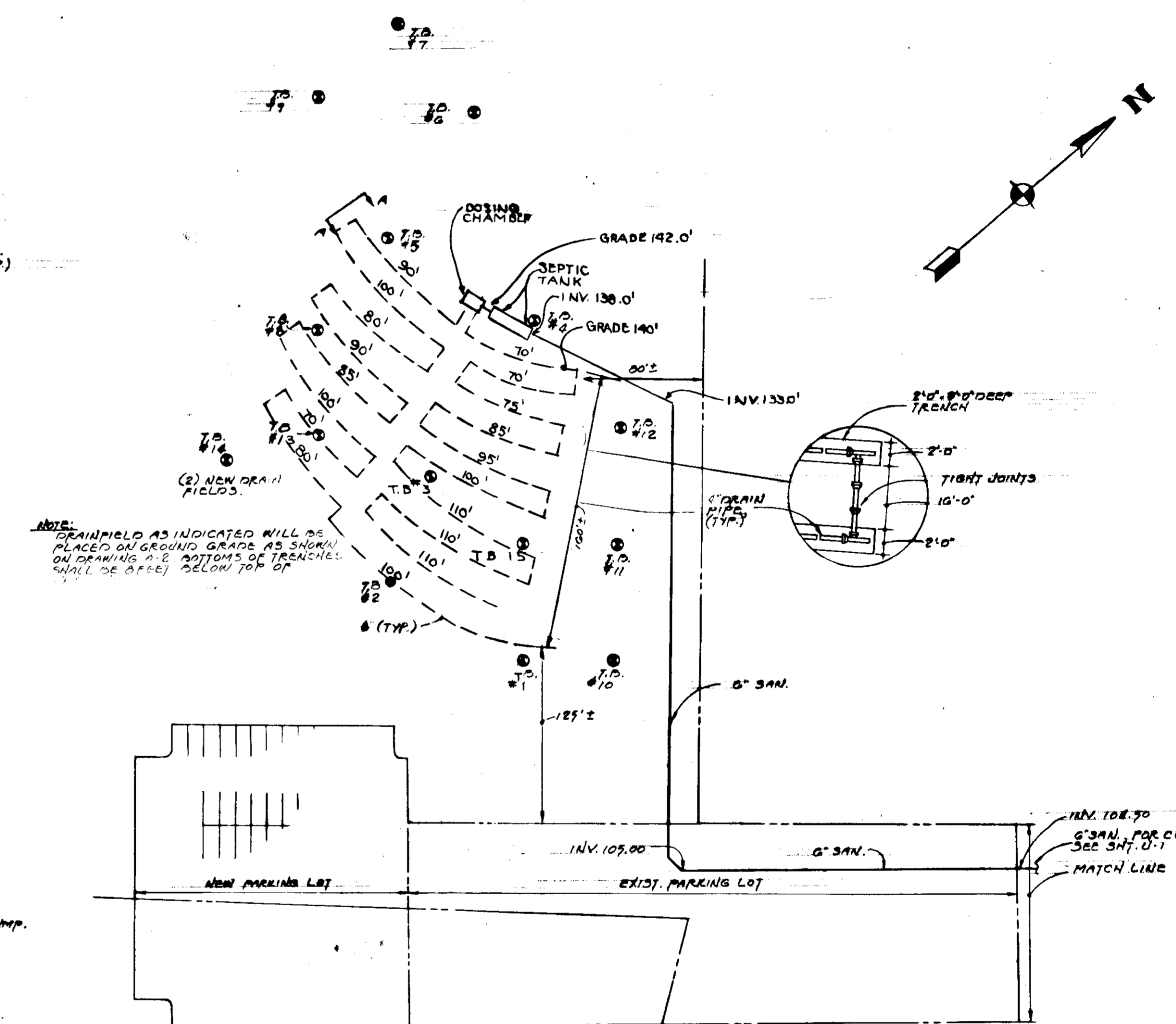
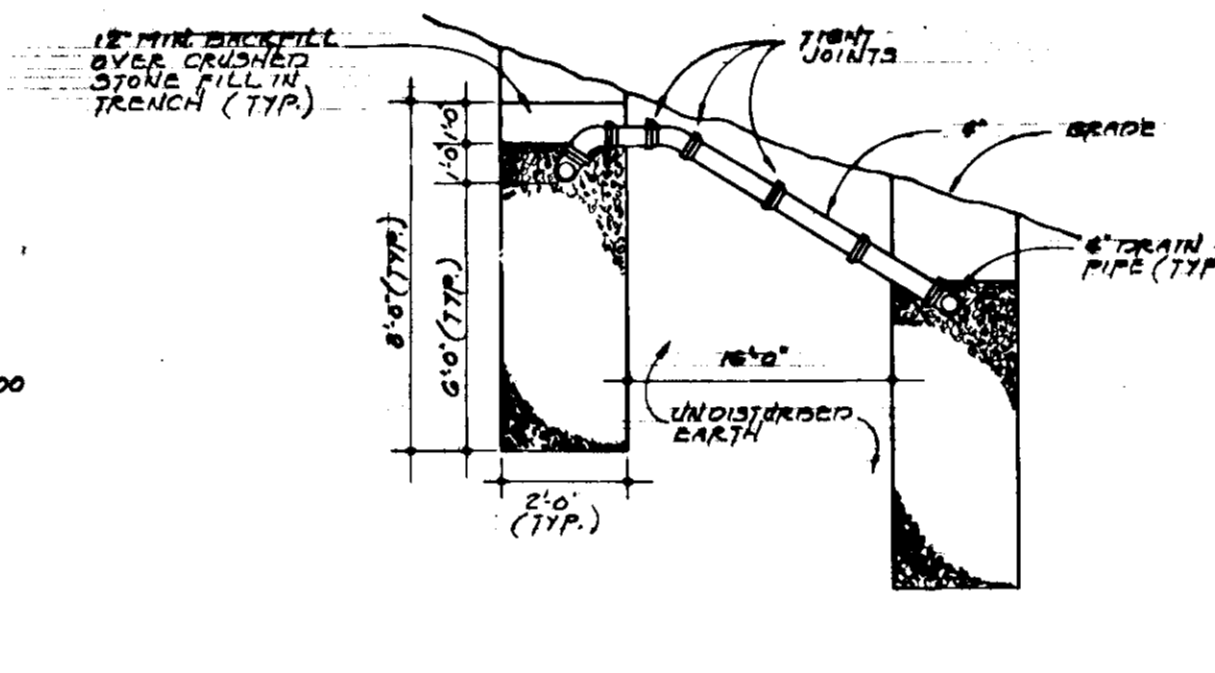
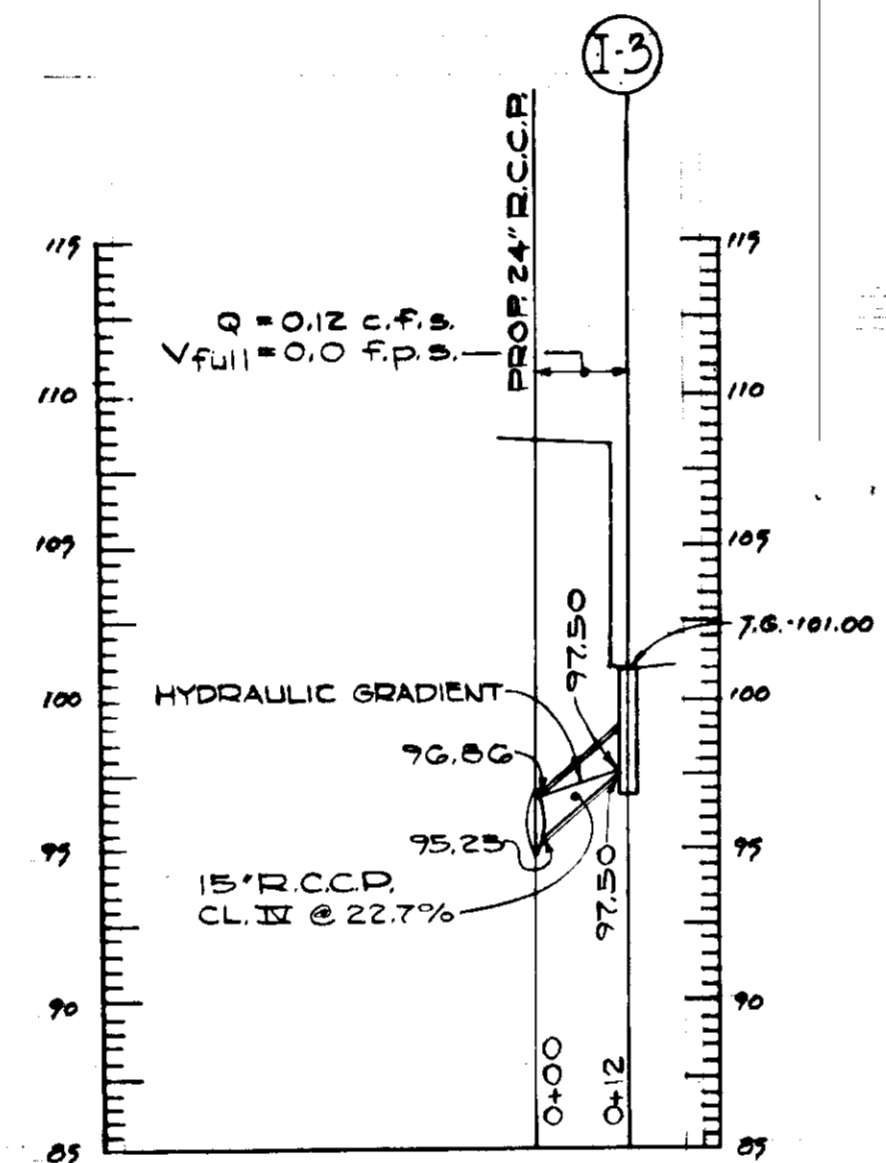
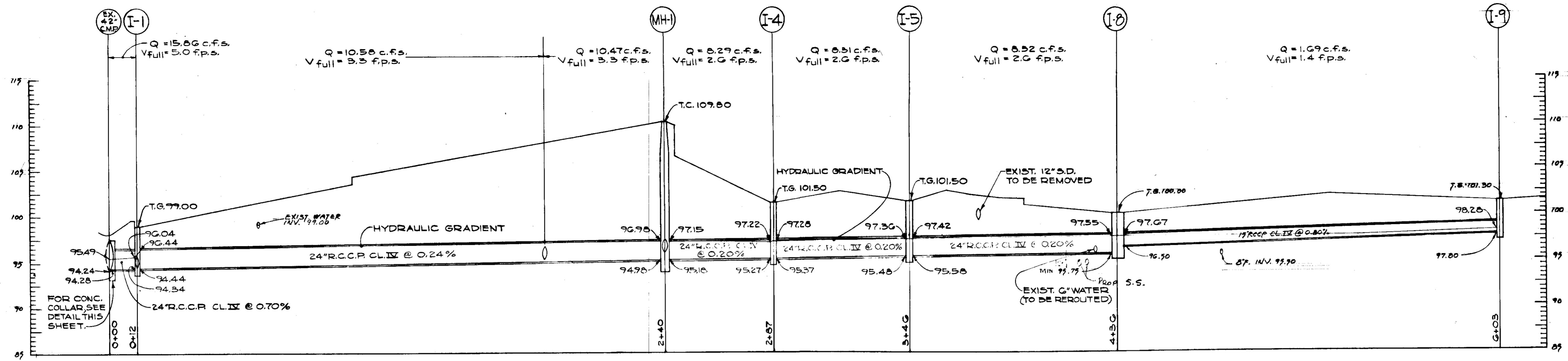


**ADDITION TO OFFICE AND TESTING FACILITIES**  
 FOR  
**BALTIMORE AIRCOIL CO. INC.**  
 MONTEVIDEO ROAD  
 HOWARD COUNTY, MARYLAND

**BONNETT and BRANDT**  
 ARCHITECTS and ENGINEERS  
 515 PARK AVENUE  
 BALTIMORE, MARYLAND

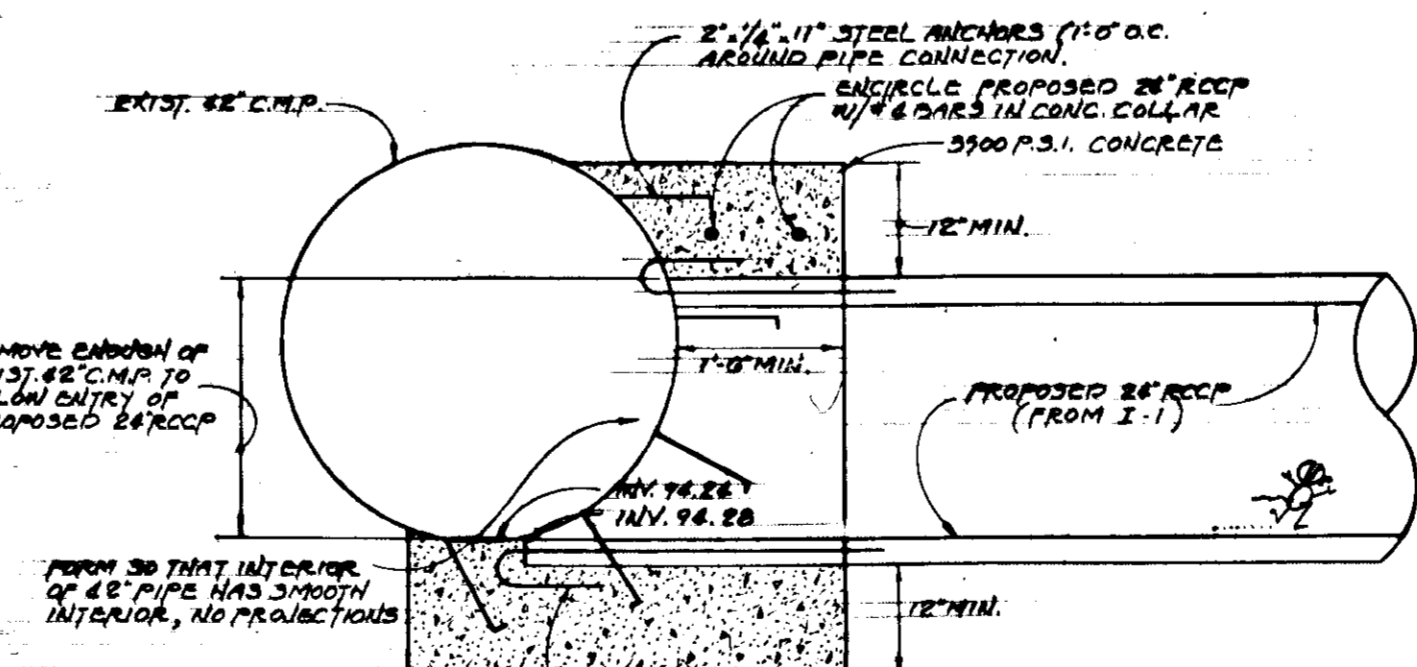
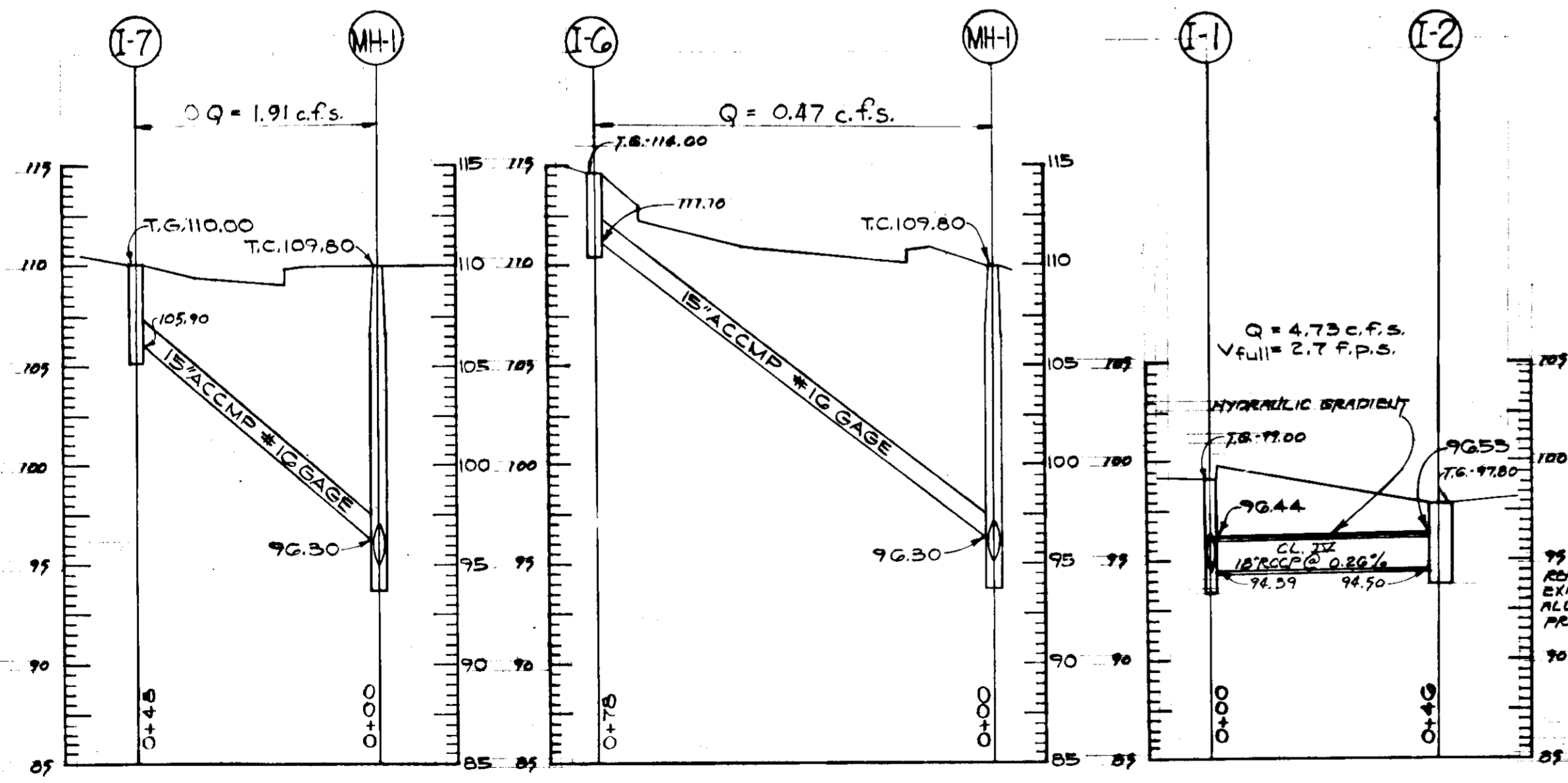
DATE: 8-7-74 SCALE: AS NOTED DRAWING NO.: 4-1  
 REVISED: WORKING JOB NO.: 682

SDP-74-116



**NOTES**

1. THE SEPTIC TANK, APPROXIMATELY 7000 GALLON CAPACITY, SHALL BE A REINFORCED CONCRETE STRUCTURE APPROXIMATELY 8 FT. LONG BY 8 FT. HIGH. TANK SHALL BE EQUIPPED WITH A DRAIN CHAMBER AND ALTERNATING SAPHONS EACH DISCHARGING TO ITS OWN 8\"/>
2. THE TWO (2) DRAIN FIELDS SHALL EACH CONSIST OF APPROXIMATELY 800 LINEAR FEET OF TWO FT. WIDE BY EIGHT FT. DEEP TRENCH. THE TRENCH WILL BE FILLED WITH CRUSHED STONE COVERED WITH ALUM. SAND AND SAND. THE DISTRIBUTION PIPING WILL BE 4\"/>
3. THE EXISTING PUMPING STATION SHALL BE REMOVED AND REPLACED WITH A NEW STATION CONSISTING OF TWO (2) 1700 RPM SEWAGE EJECTORS EACH CAPABLE OF PUMPING 350 GPM AGAINST A TOTAL HEAD OF 108 FT. 30 HP MOTOR. 6 3/4\"/>
4. PROVIDE CLEANOUTS EVERY 100 FT. ON ALL SANITARY LINES OUTSIDE THE BLDG.
5. SANITARY SERVICE SHALL BE STANDARD WEIGHT IRON ON FORCE MAIN.



**STORM WATER PROFILES**

SCALE: HOR.: 1\"/>

**CONC. COLLAR AT EXIST. 42\"/>**

SCALE: 1\"/>

**UTILITIES PLAN No 2**

SCALE: 1\"/>

APPROVED FOR PUBLIC WATER AND PRIVATE SEWERAGE SYSTEMS, HOWARD COUNTY HEALTH DEPARTMENT  
 COUNTY HEALTH OFFICER  
 APPROVED: HOWARD COUNTY OFFICE OF PLANNING AND ZONING  
 PLANNING AND ZONING DEPARTMENT  
 APPROVED FOR PUBLIC WATER PRIVATE SEWERAGE AND STORM DRAINAGE SYSTEMS AND LEADS  
 HOWARD COUNTY DEPARTMENT OF PUBLIC WORKS  
 CHIEF, BUREAU OF HIGHWAY



ADDITION TO OFFICE AND TESTING FACILITIES FOR BALTIMORE AIRCOL CO. INC.  
 118 ELECTION DISTRICT - TAX MAP 42  
 HOWARD COUNTY MARYLAND

BONNETT and BRANDT ARCHITECTS and ENGINEERS  
 515 PARK AVENUE BALTIMORE MARYLAND  
 DATE: 8-7-74 SCALE: AS NOTED DRAWING NO.: 4-2  
 REVISED: JOB NO.: 682