

APPROVED FOR PUBLIC WATER AND PUBLIC SEWERAGE SYSTEMS
 HOWARD COUNTY HEALTH DEPARTMENT
 COUNTY HEALTH OFFICER DATE
 APPROVED HOWARD COUNTY OFFICE OF PLANNING AND ZONING
 PLANNING DIRECTOR DATE
 CHIEF DIVISION OF LAND DEVELOPMENT AND TRANSPORTATION PLANNING

APPROVED FOR PUBLIC WATER, PUBLIC SEWERAGE AND STORM DRAINAGE SYSTEMS AND ROADS
 DIRECTOR DATE
 CHIEF, BUREAU OF HIGHWAYS DATE



LEGEND
 ORIGINAL LOCATION OF RECREATIONAL FACILITY

Scale: 1:30'

NOTE: ALL TREES DISTURBED IN GRADING WILL BE REPLACED WITH PROPER LANDSCAPING PARTICULARLY ALONG THE PARK & SCHOOL SITE.

DATE	REVISION TYPE
7-28-74	REVISION OF RECREATION AREA
4-26-74	ADJUSTMENT IN PARKING AREA
6-12-74	ADJUSTMENT IN PARKING AREA

Owner-Developer
 WHISKEY BOTTOM, SECTION FOUR
 A Limited Partnership
 1720 Wisconsin Avenue, N.W.
 Washington, D.C. 20007

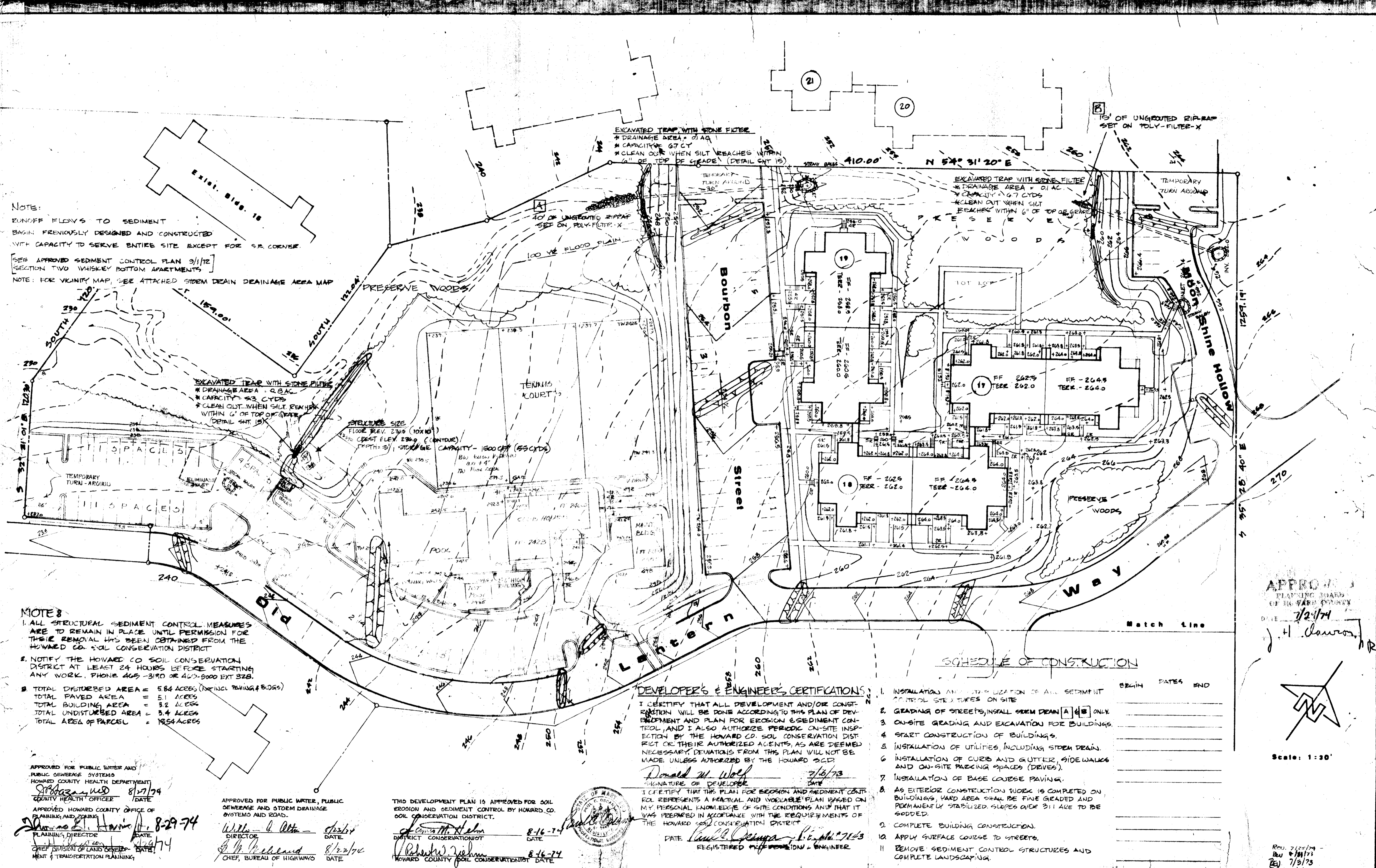
REVISIONS:
 4/1/74
 AS BUILT PLAN ADD 3/2/74
 8/27/74
 8/27/74
 8/27/74
 8/27/74

IPDS
 800 5100 AVENUE, SUITE 200
 SILVER SPRING, MARYLAND 20910
 TELEPHONE (301) 585 8445
 PLANNING & DESIGN STUDIO, LTD.
 PROFESSIONAL ARCHITECTS, ENGINEERS, PLANNERS

WHISKEY BOTTOM APARTMENTS
 REVISED RECREATION AREA
 sixth election district howard county, md.

SECTION FOUR
 Site and Grading Plan

sheet
S 1 of 3



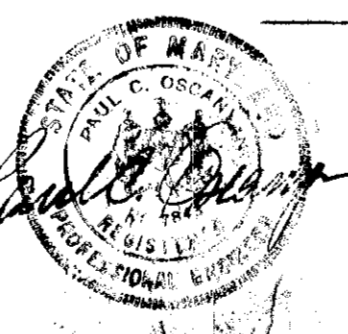
NOTE:
 RUNOFF FLOWS TO SEDIMENT
 BASIN PREVIOUSLY DESIGNED AND CONSTRUCTED
 WITH CAPACITY TO SERVE ENTIRE SITE EXCEPT FOR S.E. CORNER.
 [SEE APPROVED SEDIMENT CONTROL PLAN 9/1/72
 SECTION TWO WHISKEY BOTTOM APARTMENTS]
 NOTE: FOR VICINITY MAP, SEE ATTACHED SIDEM DRAIN DRAINAGE AREA MAP

NOTES:
 1. ALL STRUCTURAL SEDIMENT CONTROL MEASURES
 ARE TO REMAIN IN PLACE UNTIL PERMISSION FOR
 THEIR REMOVAL HAS BEEN OBTAINED FROM THE
 HOWARD CO. SOIL CONSERVATION DISTRICT
 2. NOTIFY THE HOWARD CO. SOIL CONSERVATION
 DISTRICT AT LEAST 24 HOURS BEFORE STARTING
 ANY WORK. PHONE 465-3190 OR 465-3000 EXT 328.
 3. TOTAL DISTURBED AREA = 5.84 ACRES (NOT INCL PAVING & BUDGS)
 TOTAL PAVED AREA = 5.1 ACRES
 TOTAL BUILDING AREA = 3.2 ACRES
 TOTAL UNDISTURBED AREA = 3.4 ACRES
 TOTAL AREA OF PARCEL = 10.54 ACRES

APPROVED FOR PUBLIC WATER AND
 PUBLIC SEWERAGE SYSTEMS
 HOWARD COUNTY HEALTH DEPARTMENT
 [Signature] 8/27/74
 COUNTY HEALTH OFFICER
 APPROVED HOWARD COUNTY OFFICE OF
 PLANNING AND ZONING
 [Signature] 8-29-74
 PLANNING DIRECTOR
 CHIEF DIVISION OF LAND DEVELOPMENT
 & TRANSPORTATION PLANNING

APPROVED FOR PUBLIC WATER, PUBLIC
 SEWERAGE AND STORM DRAINAGE
 SYSTEMS AND ROAD.
 [Signature] 8/22/74
 DIRECTOR
 CHIEF, BUREAU OF HIGHWAYS

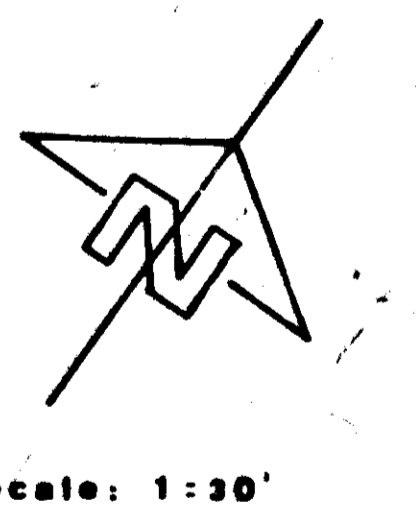
THIS DEVELOPMENT PLAN IS APPROVED FOR SOIL
 EROSION AND SEDIMENT CONTROL BY HOWARD CO.
 SOIL CONSERVATION DISTRICT.
 [Signature] 8-16-74
 DISTRICT CONSERVATIONIST
 [Signature] 8-16-74
 HOWARD COUNTY SOIL CONSERVATIONIST



DEVELOPER'S & ENGINEER'S CERTIFICATIONS
 I CERTIFY THAT ALL DEVELOPMENT AND/OR CONST-
 RUTION WILL BE DONE ACCORDING TO THIS PLAN OF DEV-
 ELOPMENT AND PLAN FOR EROSION & SEDIMENT CON-
 TROL, AND I ALSO AUTHORIZE PERIODIC ON-SITE INSPE-
 CTION BY THE HOWARD CO. SOIL CONSERVATION DIST-
 RICT OR THEIR AUTHORIZED AGENTS, AS ARE DEEMED
 NECESSARY DEVIATIONS FROM THIS PLAN WILL NOT BE
 MADE UNLESS AUTHORIZED BY THE HOWARD SCD.
 [Signature] 7/6/73
 SIGNATURE OF DEVELOPER
 I CERTIFY THAT THIS PLAN FOR EROSION AND SEDIMENT CON-
 TROL REPRESENTS A PRACTICAL AND WORKABLE PLAN BASED ON
 MY PERSONAL KNOWLEDGE OF SITE CONDITIONS AND THAT IT
 WAS PREPARED IN ACCORDANCE WITH THE REQUIREMENTS OF
 THE HOWARD CO. CONSTRUCTION DISTRICT.
 [Signature] 8-16-74
 REGISTERED PROFESSIONAL ENGINEER

- SCHEDULE OF CONSTRUCTION
- | NO. | DESCRIPTION | BEGIN | DATES | END |
|-----|---|-------|-------|-----|
| 1. | INSTALLATION AND STABILIZATION OF ALL SEDIMENT CONTROL STRUCTURES ON SITE | | | |
| 2. | GRADING OF STREETS, INSTALL SIDE DRAIN [A] ONLY | | | |
| 3. | ON-SITE GRADING AND EXCAVATION FOR BUILDINGS | | | |
| 4. | START CONSTRUCTION OF BUILDINGS | | | |
| 5. | INSTALLATION OF UTILITIES, INCLUDING STORM DRAIN. | | | |
| 6. | INSTALLATION OF CURBS AND GUTTER, SIDEWALKS AND ON-SITE PARKING SPACES (DRIVES). | | | |
| 7. | INSTALLATION OF BASE COURSE PAVING. | | | |
| 8. | AS EXTERIOR CONSTRUCTION WORK IS COMPLETED ON BUILDINGS, YARD AREA SHALL BE FINE GRADED AND PERMANENTLY STABILIZED. SLOPES OVER 3:1 ARE TO BE SODDED. | | | |
| 9. | COMPLETE BUILDING CONSTRUCTION. | | | |
| 10. | APPLY SURFACE COURSE TO STREETS. | | | |
| 11. | REMOVE SEDIMENT CONTROL STRUCTURES AND COMPLETE LANDSCAPING. | | | |

APPROVED
 PLANNING BOARD
 OF HOWARD COUNTY
 DATE 7/2/74
 [Signature]

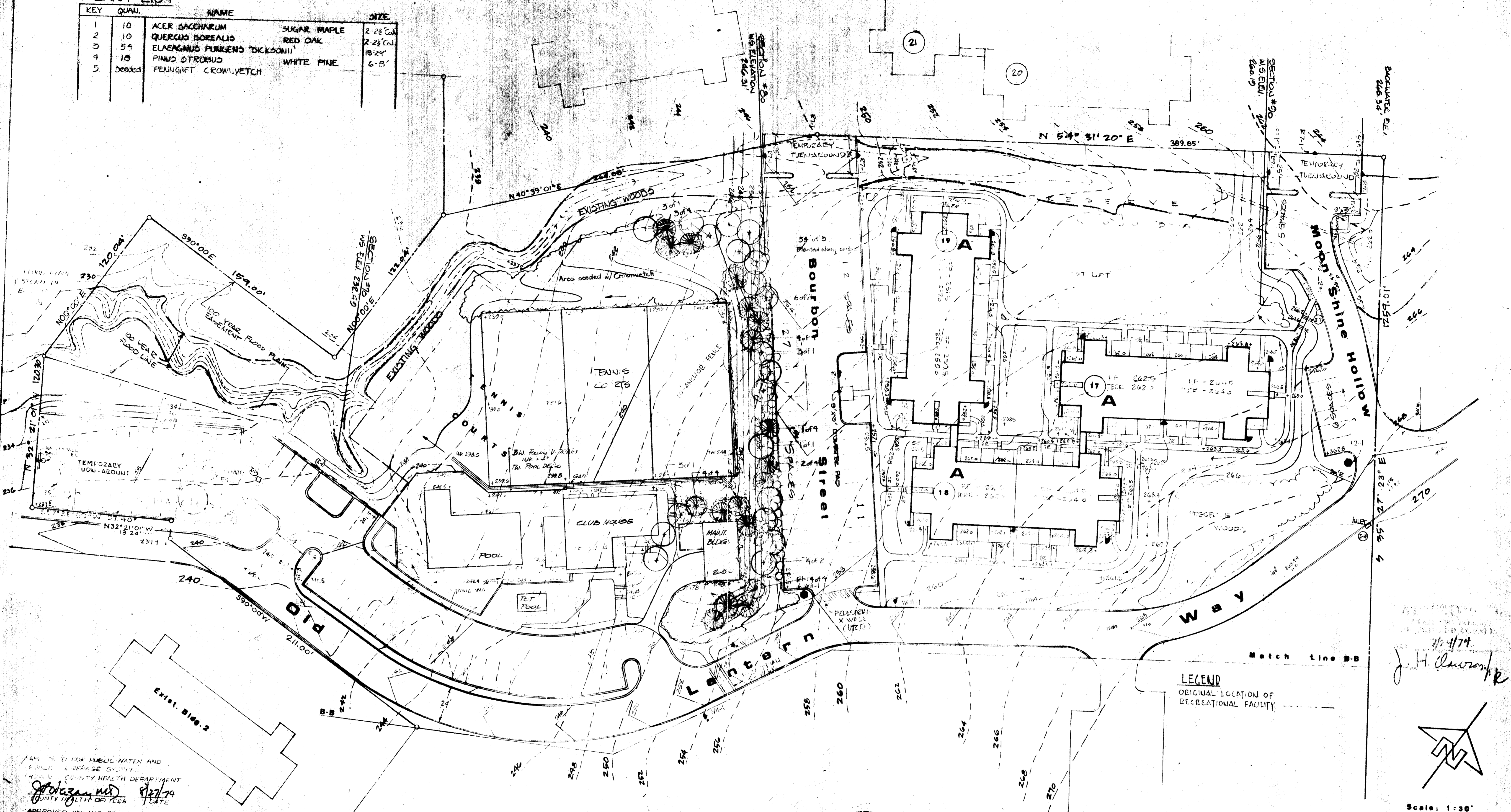


Scale: 1"=30'

REV. 7/25/74
 REV. 8/11/73
 REV. 7/9/73
 REV. 6/17/73

PLANT LIST

KEY	QUAN.	NAME	SIZE
1	10	ACER SACCHARUM	SUGAR MAPLE 2-28 Cal
2	10	QUERCUS BOREALIS	RED OAK 2-28 Cal
3	54	ELAENAGNUS FUNKENS 'DICKSONII'	18-24'
4	18	PINUS STROBUS	WHITE PINE 6-8'
5	Seeded	PENICILLATA CROWWEY VETCH	



LEGEND
 ORIGINAL LOCATION OF RECREATIONAL FACILITY

Scale: 1" = 30'

NOTE: ALL TREES DISTURBED IN GRADING WILL BE REPLACED WITH TROPIC LANDSCAPING PARTICULARLY ALONG THE PARK & SCHOOL SITE.

● = LIGHTS

APPROVED FOR PUBLIC WATER AND SEWERAGE SYSTEMS
 HOWARD COUNTY HEALTH DEPARTMENT
 COUNTY HEALTH OFFICER
 J. H. Clowry
 DATE 8/27/74

APPROVED FOR PUBLIC WATER, PUBLIC SEWERAGE AND STORM DRAINAGE SYSTEMS AND ROADS
 William L. Allen
 DATE 8/23/74

THIS DEVELOPMENT PLAN IS APPROVED FOR SOIL EROSION AND SEDIMENT CONTROL BY HOWARD CO. SOIL CONSERVATION DISTRICT.
 James M. Nelson
 DATE 8-16-74



APPROVED HOWARD COUNTY OFFICE OF PLANNING AND ZONING
 Director
 J. H. Clowry
 DATE 8/29/74

APPROVED FOR PUBLIC WATER, PUBLIC SEWERAGE AND STORM DRAINAGE SYSTEMS AND ROADS
 Chief Bureau of Highways
 DATE 8/22/74

District Conservationist
 Robert J. Velasco
 DATE 8-16-74

Owner-Developer
 WHISKEY BOTTOM, SECTION FOUR
 A Limited Partnership
 1720 Wisconsin Avenue, N.W.
 Washington, D.C. 20007

REVISIONS:
 1. AS BUILT PLAN ADD 8/24/74

IPDS
 800 51100 AVENUE, SUITE 500
 11718 SPONG HARTSHORN RD
 TELEPHONE (301) 582 8445

WHISKEY BOTTOM APARTMENTS
 REVISIONED RECREATION AREA
 sixth election district
 howard county, md.

SECTION FOUR
 Screen Planting Plan
 sheet
 83 of 3

DATE	REVISION	TYPE
8-27-74	1	ADJUSTMENT IN PARKING AREA
8-27-74	2	ADJUSTMENT IN PARKING AREA
8-27-74	3	ADJUSTMENT IN PARKING AREA

801-47-100

50P74-10