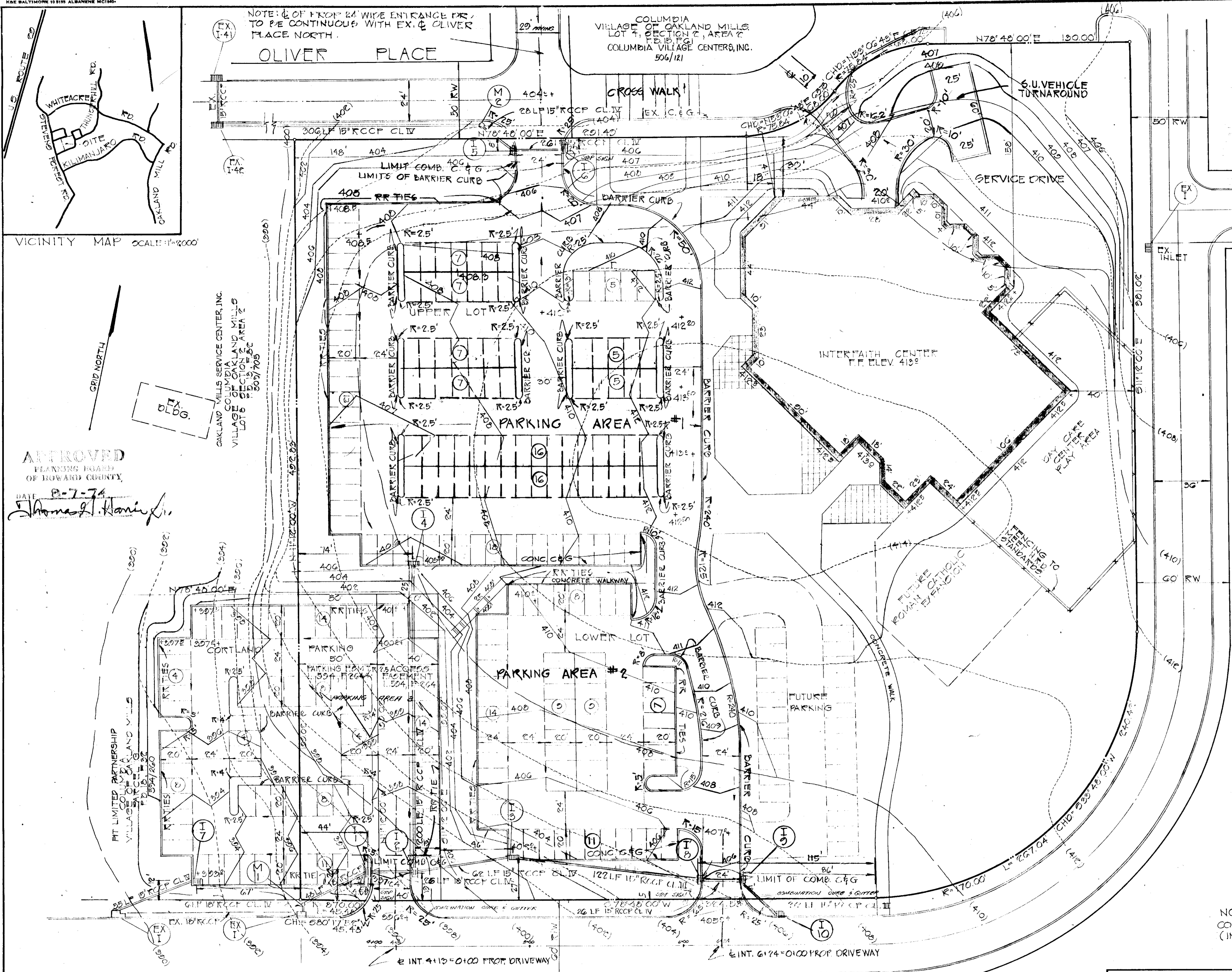


ISSUE	BY & DATE	DESCRIPTION	CHECK	APPROVED & DATE
		REVIEWED FOR HOWARD S.C.D. AND MEETS TECHNICAL REQUIREMENTS.		
		U.S. SOIL CONSERVATION SERVICE		11-25-74 DATE
		THIS DEVELOPMENT PLAN IS APPROVED FOR SOIL EROSION AND SEDIMENT CONTROL BY THE HOWARD COUNTY SOIL CONSERVATION DISTRICT.		11-25-74 DATE
		HOWARD COUNTY SOIL CONSERVATION DISTRICT		



VICINITY MAP SCALE: 1"=2000'

APPROVED
PLANNING BOARD
OF HOWARD COUNTY
DATE: 8-7-74
Thomas J. Harris, Jr.

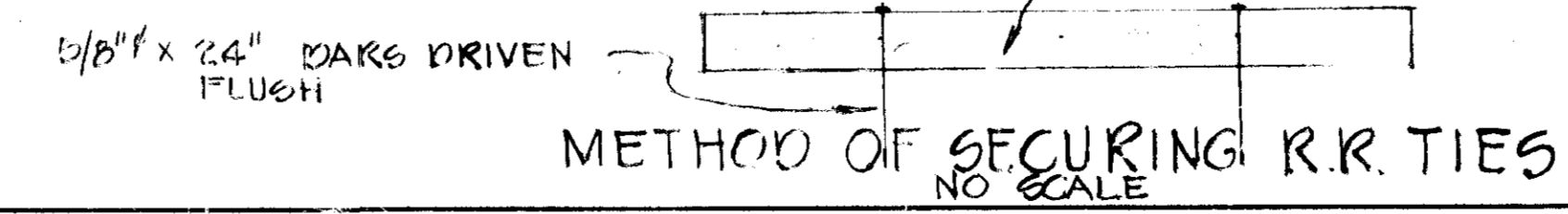
APPROVED FOR PUBLIC WATER AND PUBLIC SEWERAGE SYSTEMS, HOWARD COUNTY HEALTH DEPARTMENT.
12/11/74 DATE
Howard County Health Officer
APPROVED: HOWARD COUNTY OFFICE OF PLANNING AND ZONING.
12-12-74 DATE
Planning Director
12/12/74 DATE
Division of Land Development & Transportation Planning
APPROVED FOR PUBLIC WATER AND PUBLIC SEWERAGE AND STORM DRAINAGE SYSTEMS AND ROADS.
12/22/74 DATE
Director
12/22/74 DATE
Chief, Bureau of Highways

- GENERAL NOTES**
- TOTAL AREA OF SITE: 6.222 ACRES
 - BUILDING USE: RELIGIOUS FACILITY
 - PARKING SPACES: 239 P.S.
 - TAX MAP: 56
 - PROPERTY REFERENCE: P.D. 15, P. 02
 - PARCEL NO. 296
 - ZONING: NEW TOWN
 - PUBLIC WATER & PUBLIC SEWER
 - SEATING CAPACITY: 500
 - OWNER & DEVELOPER:
COLUMBIA RELIGIOUS FACILITY CORP.
INTERFAITH FACILITY
WILD LAKE VILLAGE GREEN
COLUMBIA, MD. 21044
 - PARKING REQUIRED: 206
 - MARYLAND STATE GRID SYSTEM
 - SIDEWALKS TO BE CONCRETE
 - ISLANDS TO BE GRASS
 - PARKING TABULATION:
PARKING AREA #1 114 P.S.
PARKING AREA #2 58 P.S.
PARKING AREA #3 67 P.S.
TOTAL SPACES 209 P.S.

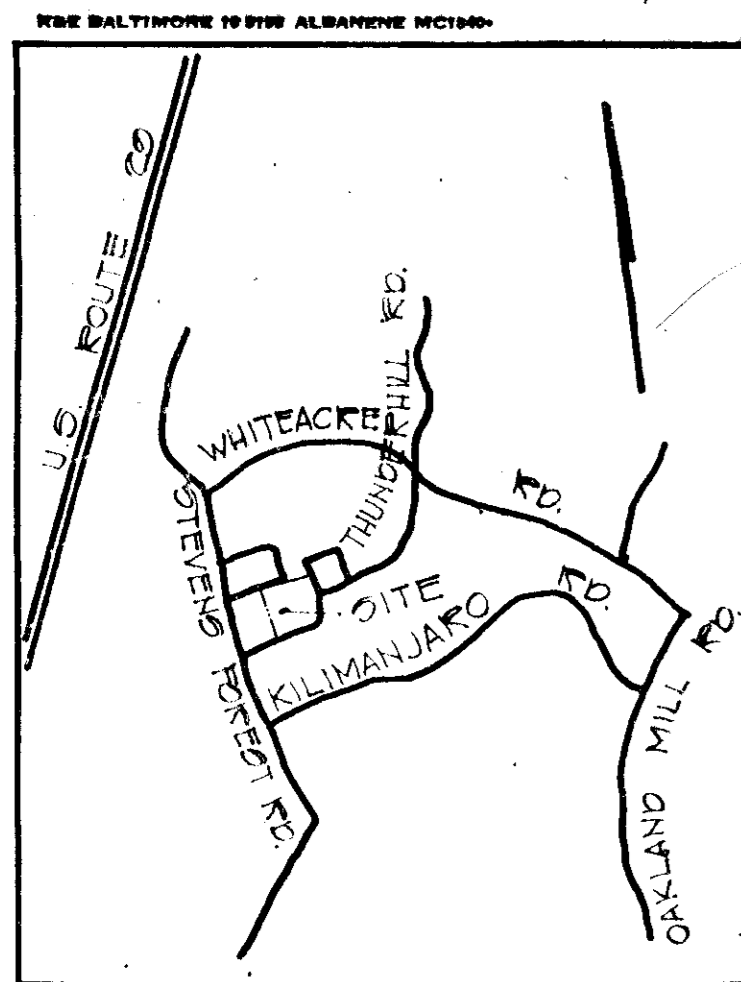
LEGEND
---(400)--- PROPOSED CONTOURS
---(400)--- EXISTING CONTOURS
400.0+ SPOT ELEVATIONS

NOTE: PLANTING WILL NOT BE ALLOWED WITHIN ANY COUNTY RIGHTS-OF-WAY.
NOTE: CONCRETE SIDEWALK ALONG SANTIAGO ROAD (IN RIGHT-OF-WAY) SHALL BE MAINTAINED.

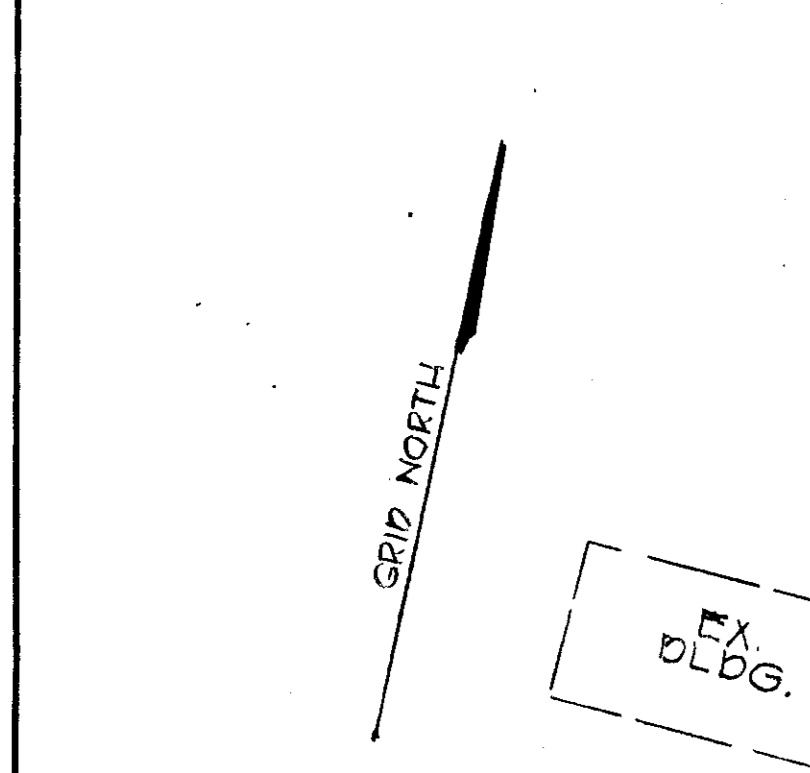
NOTE: THE PARCEL SHOWN ON THIS PLAN IS SUBJECT TO THE SUPPLEMENTAL ORDER NO. 11 AND OF CONSTRUCTION CAPABLE OF SECTION 19.311.9 OF THE HANOVER COUNTY ZONING AND EXECUTIVE ORDER NO. 72-9.



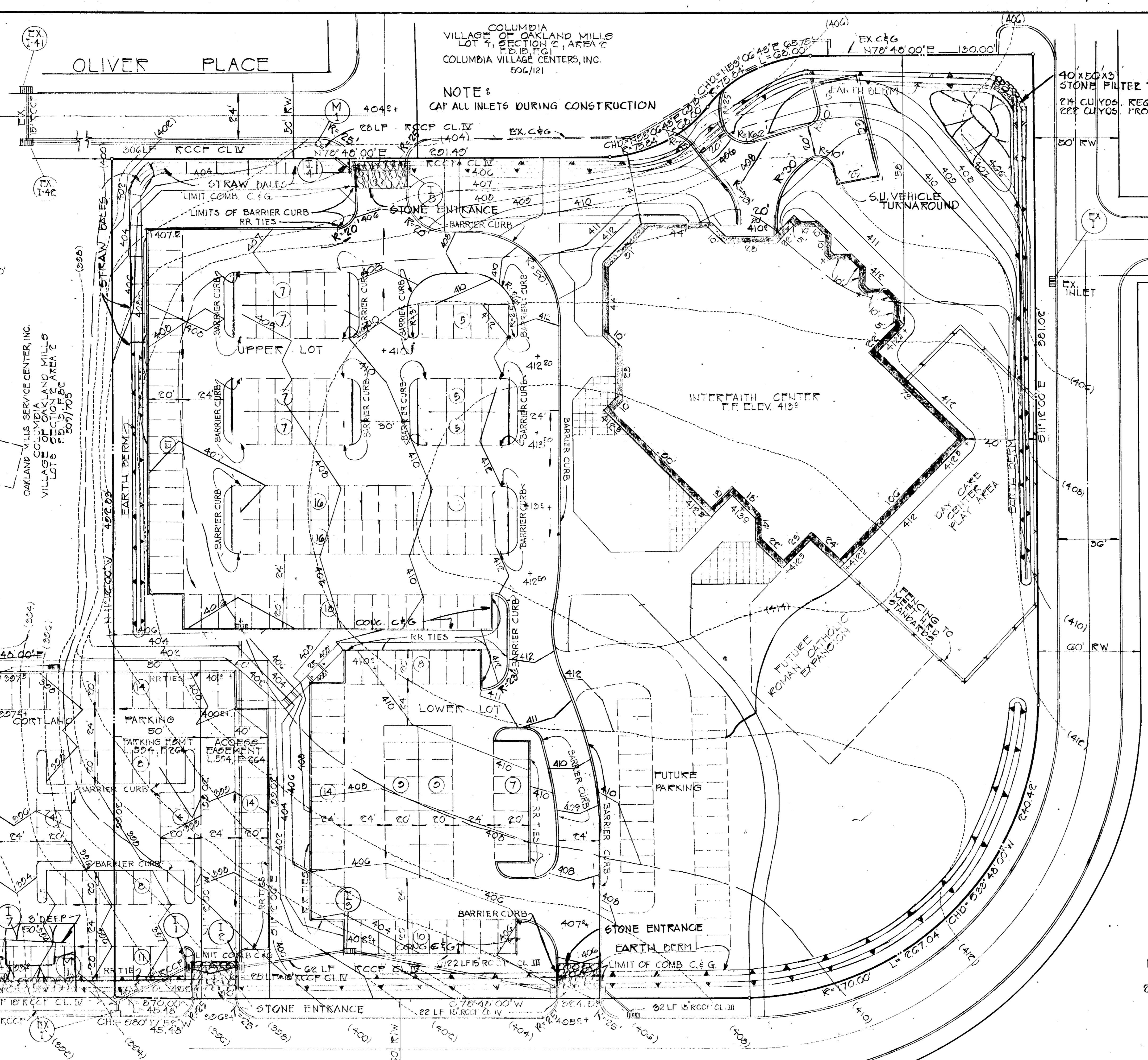
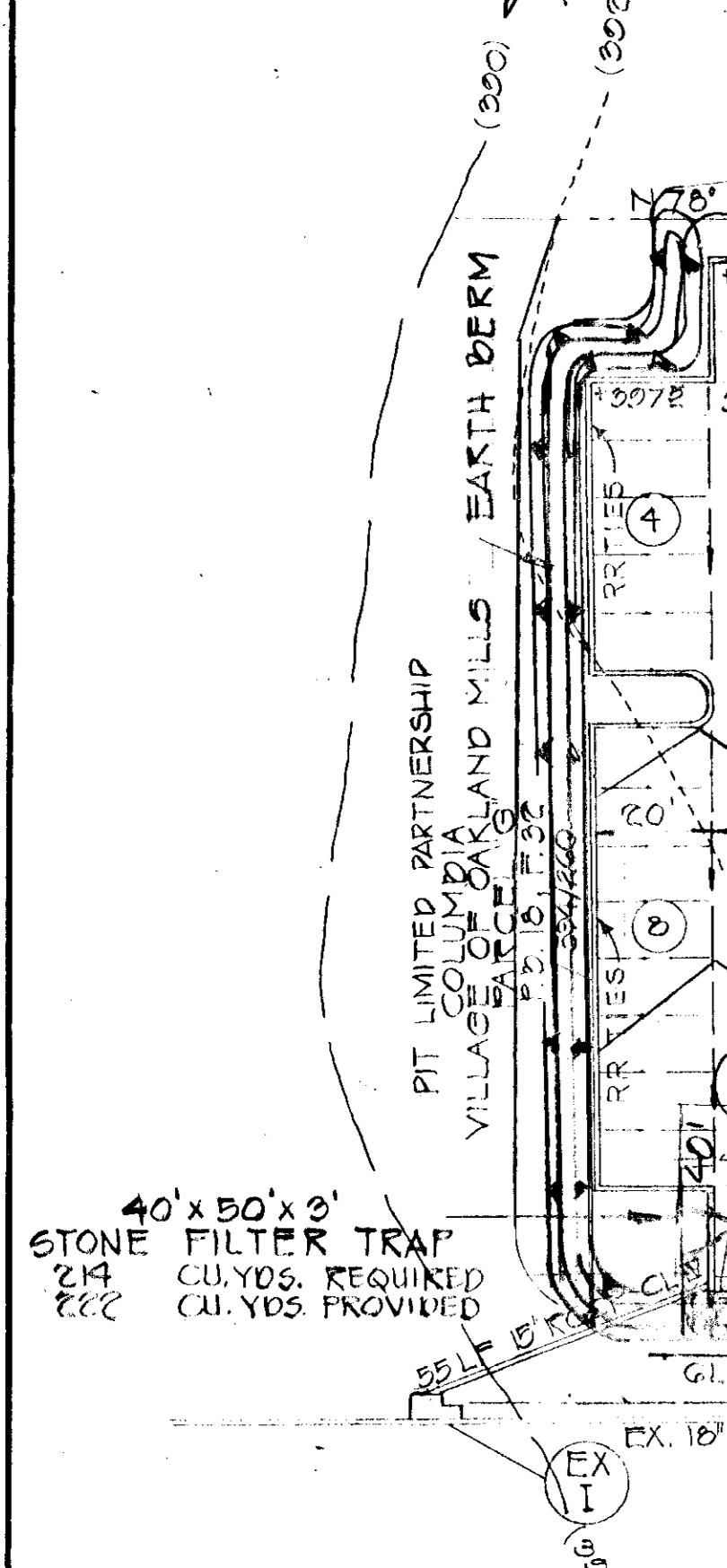
TITLE: SITE PLAN		STATE OF MARYLAND REGISTERED PROFESSIONAL LAND SURVEYOR	ENGINEERING PLANNING SURVEYING BY BOENDER ASSOCIATES INC.
PROJECT: COLUMBIA RELIGIOUS FACILITIES CORP. VILLAGE OF OAKLAND MILLS, ETC. 2, AREA 2, LOT 7			
LOCATION: G# ELECTION DISTRICT	HOWARD CO., MD.	BALTIMORE, MD. 466-7777 SALISBURY, MD. 740-1786 WESTMINSTER, MD. 840-9888	DATE: 5/23/74 DES. BY: TKO DRAWN BY: T.D. CHKD. BY: TKO SCALE: 1"=50' JOB NO. 1410 DRWG. NO. 1015
METHOD OF SECURING R.R. TIES NO SCALE			



VICINITY MAP SCALE: 1"=1000'



APPROVED
PLANNING BOARD
OF HOWARD COUNTY
DATE: 8-1-74
Thomas L. Harris



REVISIONS			
ISSUE	BY & DATE	DESCRIPTION	CHECK APPROVED & DATE

REVIEWED FOR HOWARD S.C.D. AND METS TECHNICAL REQUIREMENTS
James Smith 11-25-74
U.S. SOIL CONSERVATION SERVICE - DATE

THIS DEVELOPMENT PLAN IS APPROVED FOR SOIL EROSION AND SEDIMENT CONTROL BY THE HOWARD COUNTY SOIL CONSERVATION DISTRICT
Robert J. Zeman 11-25-74
HOWARD SOIL CONSERVATION DIST. DATE

APPROVED FOR PUBLIC WATER AND PUBLIC SEWERAGE SYSTEMS, HOWARD COUNTY HEALTH DEPARTMENT.
John Stazay 12/11/74
HOWARD COUNTY HEALTH OFFICER DATE

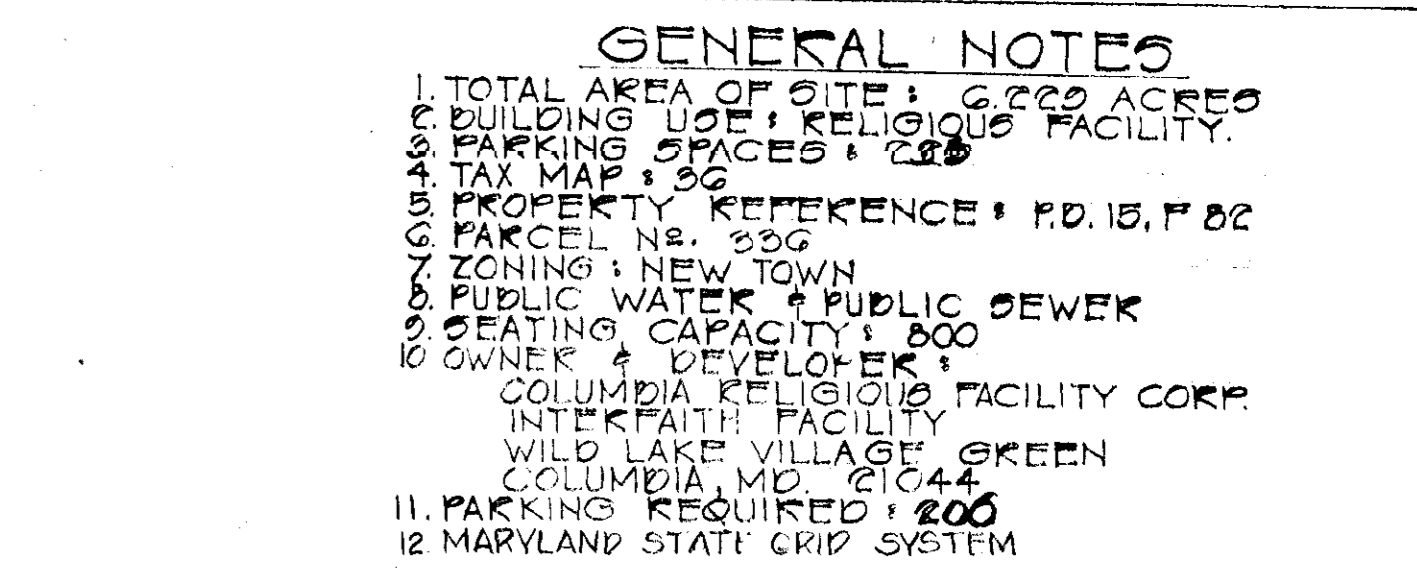
APPROVED FOR HOWARD COUNTY OFFICE OF PLANNING AND ZONING
Thomas L. Harris 12-12-74
PLANNING DIRECTOR DATE

APPROVED FOR PUBLIC WATER AND PUBLIC SEWERAGE AND STORM DRAINAGE SYSTEMS AND ROADS.
William A. Quinn 12/12/74
DIRECTOR DATE

J. M. Weiland 12/21/74
CHIEF, BUREAU OF HIGHWAYS DATE

GENERAL NOTES

- TOTAL AREA OF SITE: 6.222 ACRES
- BUILDING: 106' x RELIGIOUS FACILITY.
- PARKING SPACES: 228
- TAX MAP: 56
- PROPERTY REFERENCE: P.D. 15, P. 22
- PARCEL NO.: 256
- ZONING: NEW TOWN
- PUBLIC WATER & PUBLIC SEWER
- SEATING CAPACITY: 800
- OWNER & DEVELOPER: COLUMBIA RELIGIOUS FACILITY CORP. INTERFAITH FACILITY WILD LAKE VILLAGE GREEN COLUMBIA, MD. 21044
- PARKING REQUIRED: 200
- MARYLAND STATE GRID SYSTEM



LEGEND

- (400) PROPOSED CONTOURS
- 400 EXISTING CONTOURS
- 400.0+ SPOT ELEVATIONS

NOTES:

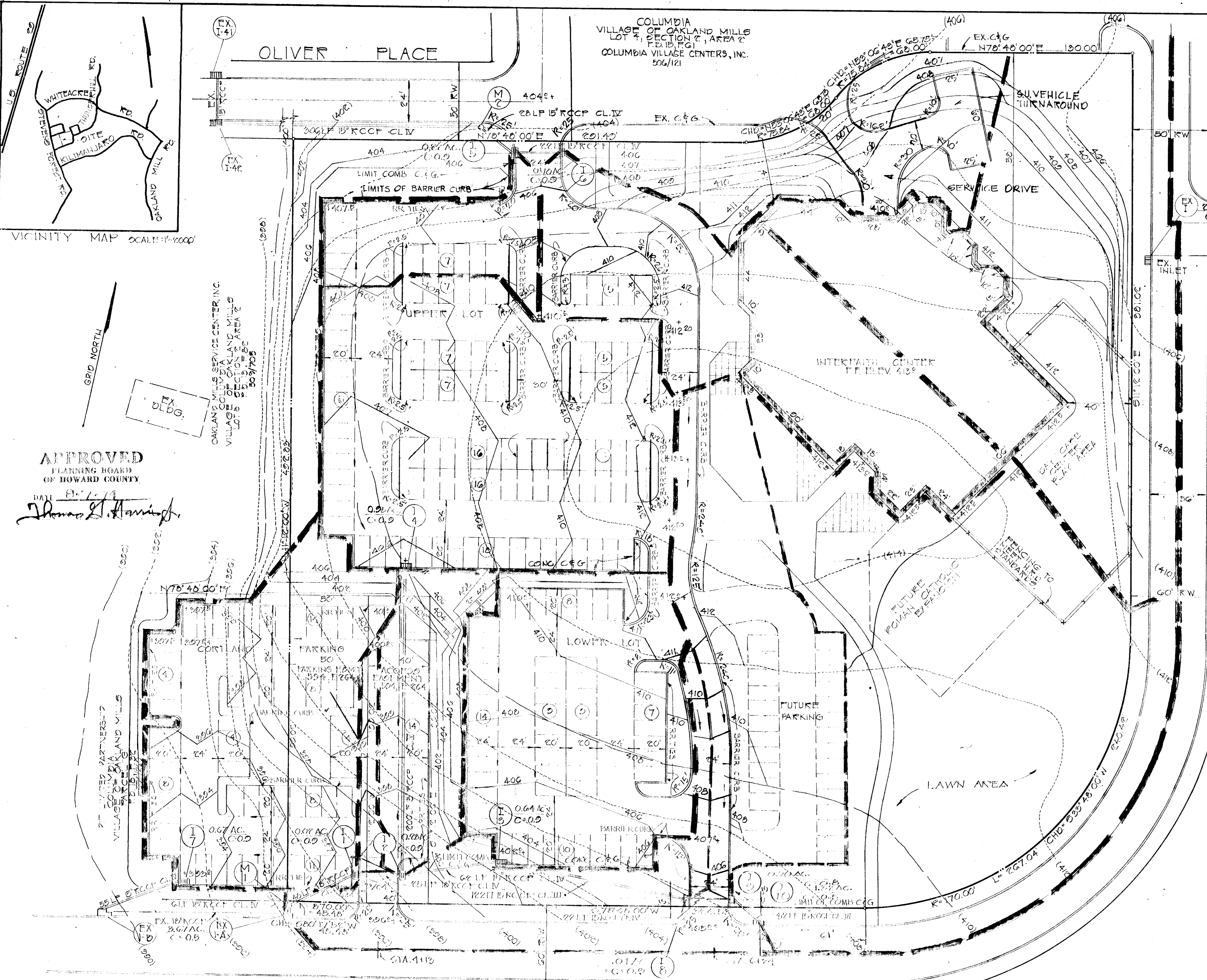
- STONE FILTER TO BE CLEANED AND MAINTAINED EVERY THREE (3) MONTHS
- CONSTRUCTION ENTRANCE TO BE #2 STONE 18" HIGH W/6:1 SIDE SLOPES.

SANTIAGO ROAD

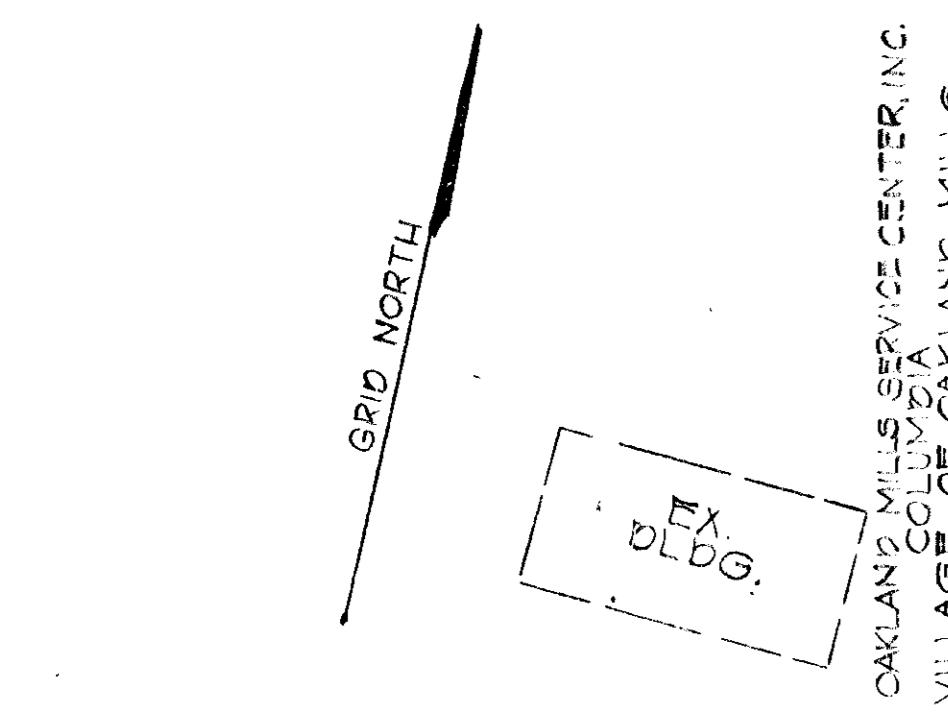
NOTE: CAP ALL INLETS DURING CONSTRUCTION.

TITLE SEDIMENT CONTROL PLAN			
PROJECT COLUMBIA RELIGIOUS FACILITIES CORP. VILLAGE OF OAKLAND MILLS, SEC. 2, AREA 4, LOT 7			
LOCATION GTH COLLECTION DISTRICT HOWARD CO., MD.			
DATE:	DES. BY: T.K.E.	DRAWN BY: T.D.	CHECK BY: T.K.E.
SCALE: 1"=50'	JOB NO. 7419	DRWG. NO. 2015	DATE

BOENDER ASSOCIATES INC.
BALTIMORE, MD. 466-7777
SALISBURY, MD. 749-1266
WESTMINSTER, MD. 846-5588



VICINITY MAP SCALE 1/4"=1000'



APPROVED PLANNING BOARD OF HOWARD COUNTY
DATE 11-1-74
Thomas J. Manning

VILLAGE OF OAKLAND MILLS
LOT 7, SECTION 2, AREA 2
COLUMBIA VILLAGE CENTERS, INC.
506/121

REVISIONS			
ISSUE	BY & DATE	DESCRIPTION	CHECK APPROVED & DATE
		REVIEWED FOR HOWARD S.C.D. AND MEETS TECHNICAL REQUIREMENTS.	
		U.G. SOIL CONSERVATION SERVICE	11-25-74 DATE
		THIS DEVELOPMENT PLAN IS APPROVED FOR SOIL EROSION AND SEDIMENT CONTROL BY THE HOWARD COUNTY SOIL CONSERVATION DISTRICT.	
		Robert W. Ziehm	11-25-74 DATE
		HOWARD COUNTY SOIL CONSERVATION DISTRICT	

APPROVED FOR PUBLIC WATER AND PUBLIC SEWERAGE SYSTEMS. HOWARD COUNTY HEALTH DEPARTMENT.	
Howard S. D. (Signature)	12/11/74 DATE
HOWARD COUNTY HEALTH OFFICER	
APPROVED HOWARD COUNTY OFFICE OF PLANNING AND ZONING.	
Thomas J. Manning (Signature)	12-12-74 DATE
PLANNING DIRECTOR	
APPROVED FOR PUBLIC WATER AND PUBLIC SEWERAGE AND STORM DRAINAGE SYSTEMS AND ROADS.	
W. Lawson (Signature)	12/12/74 DATE
CHIEF, DIVISION OF LAND DEVELOPMENT & TRANSPORTATION PLANNING	
APPROVED FOR PUBLIC WATER AND PUBLIC SEWERAGE AND STORM DRAINAGE SYSTEMS AND ROADS.	
Willis A. O'Brien (Signature)	12/12/74 DATE
DIRECTOR	
J. B. McLeod (Signature)	12/12/74 DATE
CHIEF, BUREAU OF HIGHWAYS	

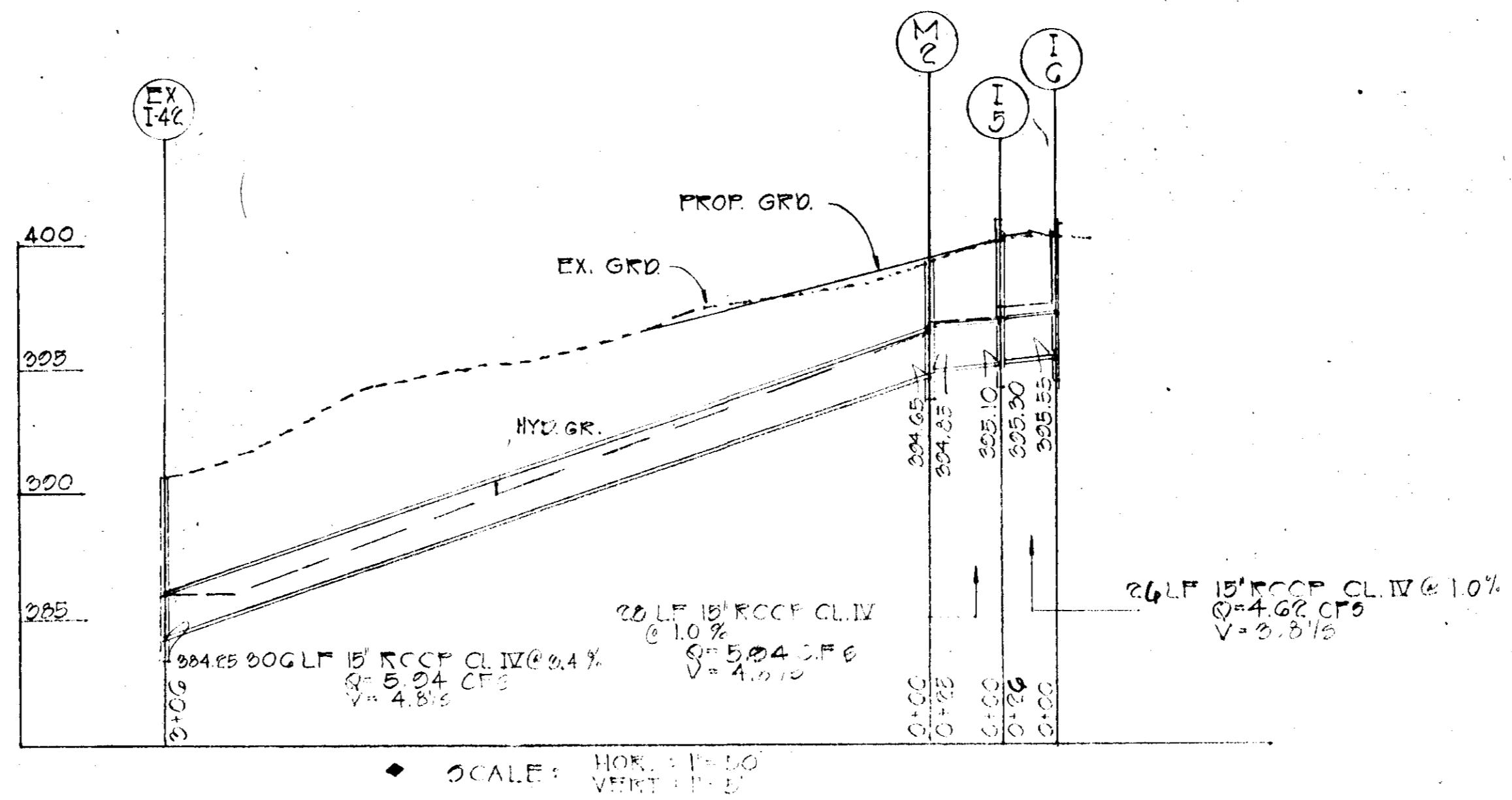
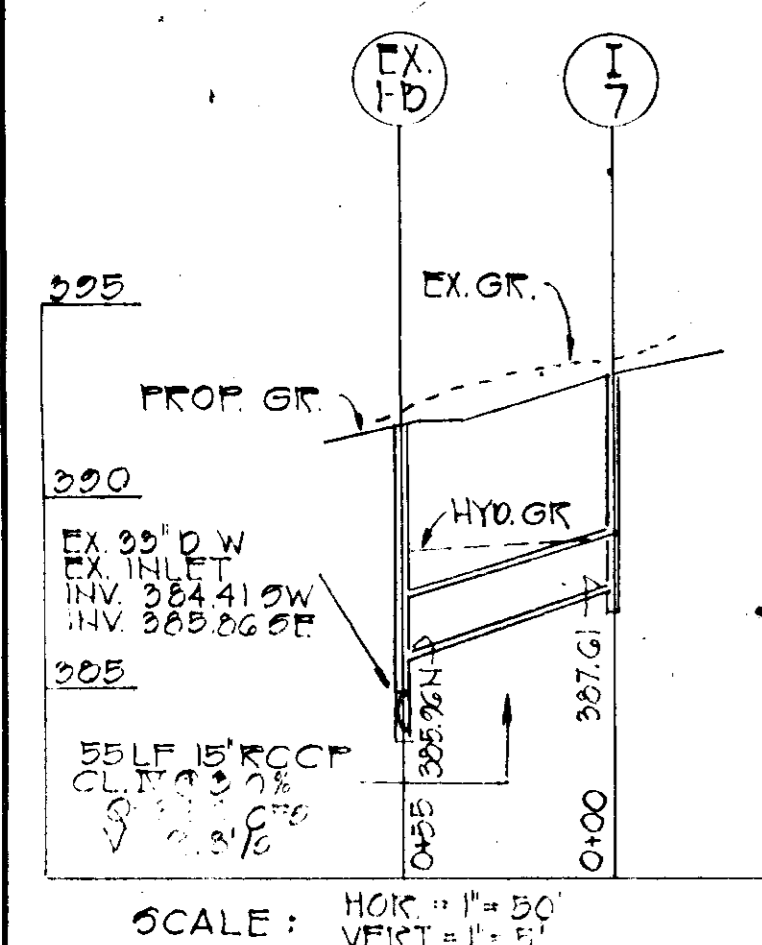
- GENERAL NOTES**
- TOTAL AREA OF SITE: 6.222 ACRES
 - BUILDING FOOTPRINT RELIGIOUS FACILITY
 - PARKING SPACES: 200
 - TAX MAP: 52
 - PARCEL REFERENCE: RD. 15, F. 82
 - ZONING: NEW TOWN
 - PUBLIC WATER & PUBLIC SEWER
 - SEATING CAPACITY: 200
 - OWNER & DEVELOPER: COLUMBIA RELIGIOUS FACILITY CORP. INTERFAITH FACILITY WILD LAKE VILLAGE GREEN COLUMBIA, MD. 21044
 - PARKING REQUIRED: 200
 - MARYLAND STATE GRID SYSTEM

LEGEND

- (400)--- PROPOSED CONTOURS
- 400--- EXISTING CONTOURS
- 400.0+ SPOT ELEVATIONS

TITLE: DRAINAGE AREA MAP			ENGINEERING PLANNING SURVEYING BY BOENDER ASSOCIATES INC. BALTIMORE, MD. 405-7777 SALISBURY, MD. 749-1286 WESTMINSTER, MD. 848-6588
PROJECT: COLUMBIA RELIGIOUS FACILITIES CORP. VILLAGE OF OAKLAND MILLS, SEC. 2, AREA 1, LOT 7	LOCATION: COLLECTION DISTRICT HOWARD CO., MD.		
DATE: 11-1-74	DES. BY: T.K.O.	DRAWN BY: T.P.	CHECK BY: T.K.O.
SCALE: 1/4"=50'	JOB NO. 1410	DRWG. NO. 3015	DATE: 11-1-74

REVISIONS			
ISSUE	BY & DATE	DESCRIPTION	CHECK APPROVED & DATE



STRUCTURE SCHEDULE						
NO.	TYPE	INV. IN.	INV. OUT.	TOP EL.	LOCATION	REMARKS
I-1	HO. CO. STD. CL. A-5 INLET	391.40	391.30	397.50	AS SHOWN	SEE HO. CO. STD. DETAILS DRWG. D64A PG 10A
I-2	HO. CO. STD. CL. A-10 INLET	391.15	391.26	397.50	AS SHOWN	SEE HO. CO. STD. DETAILS DRWG. D64A PG 10A
I-3	HO. CO. STD. 15" CORR.	-	395.31	402.50	AS SHOWN	SEE HO. CO. STD. DETAILS DRWG. D-38 PG 15B
I-4	HO. CO. STD. 15" CORR.	-	397.05	406.00	AS SHOWN	SEE HO. CO. STD. DETAILS DRWG. D-38 PG 15B
I-5	HO. CO. STD. CL. A-10 INLET	395.30	395.10	405.50	AS SHOWN	SEE HO. CO. STD. DETAILS DRWG. D64A PG 10A
I-6	HO. CO. STD. CL. A-10 INLET	-	395.55	405.50	AS SHOWN	SEE HO. CO. STD. DETAILS DRWG. D64A PG 10A
I-7	HO. CO. STD. 15" CORR.	-	397.51	397.50	AS SHOWN	SEE HO. CO. STD. DETAILS DRWG. D-38 PG 15B
M-1	HO. CO. STD. MANHOLE	390.40	388.20	"	AS SHOWN	SEE HO. CO. STD. DETAILS DRWG. D-38 PG 15B
M-2	HO. CO. STD. MANHOLE	394.85	394.65	"	AS SHOWN	SEE HO. CO. STD. DETAILS DRWG. D-38 PG 15B
I-8	HO. CO. STD. CL. A-5 INLET	399.50	399.30	406.00	AS SHOWN	" " " " " " D64A PG 10A
I-9	HO. CO. STD. CL. A-10 INLET	400.50	400.30	406.00	"	" " " " " " D64A PG 10A
I-10	HO. CO. STD. CL. A-10 INLET	400.50	401.66	406.00	"	" " " " " " D64A PG 10A

REVIEWED FOR Howard S.C.D. AND MEETS TECHNICAL REQUIREMENTS.

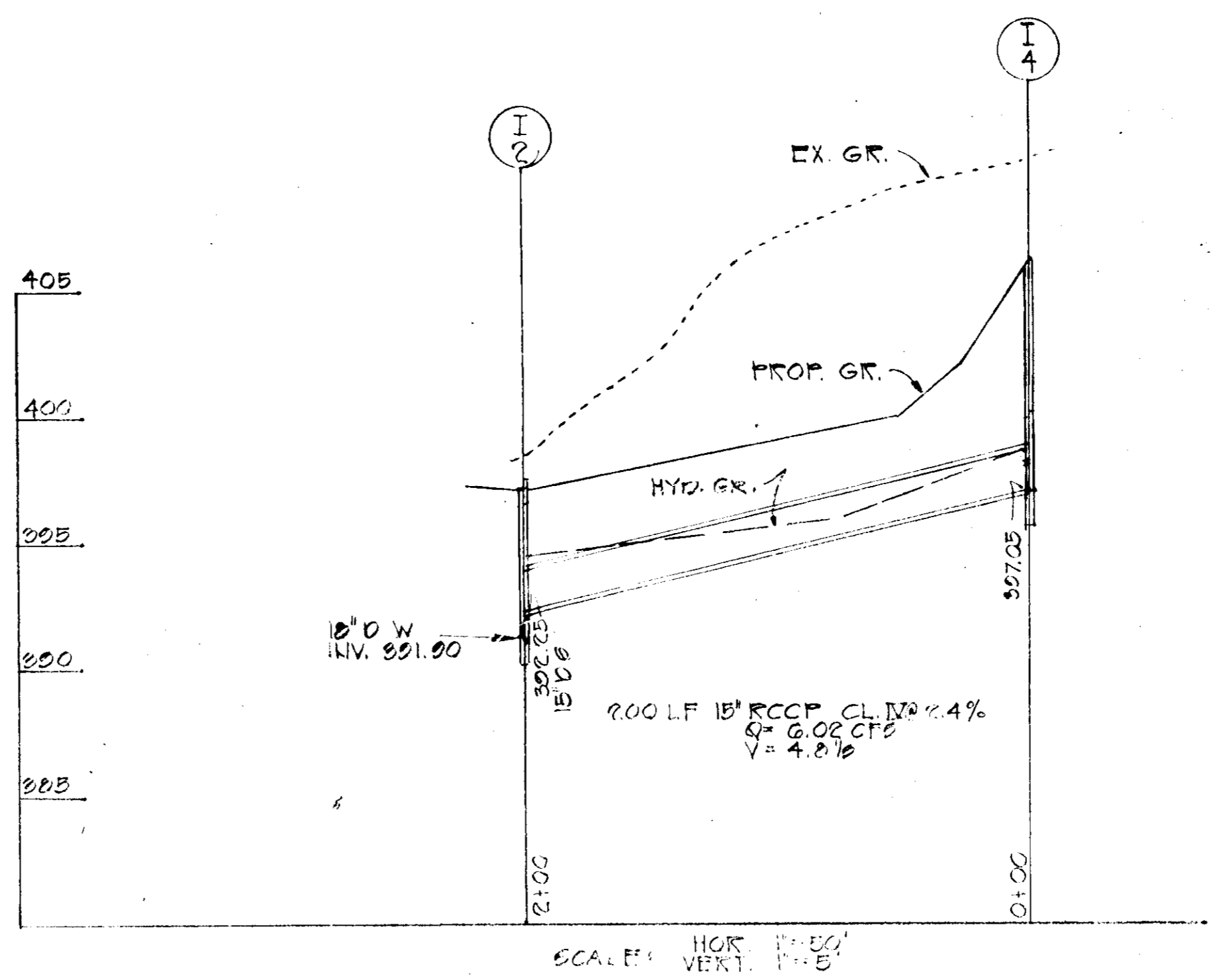
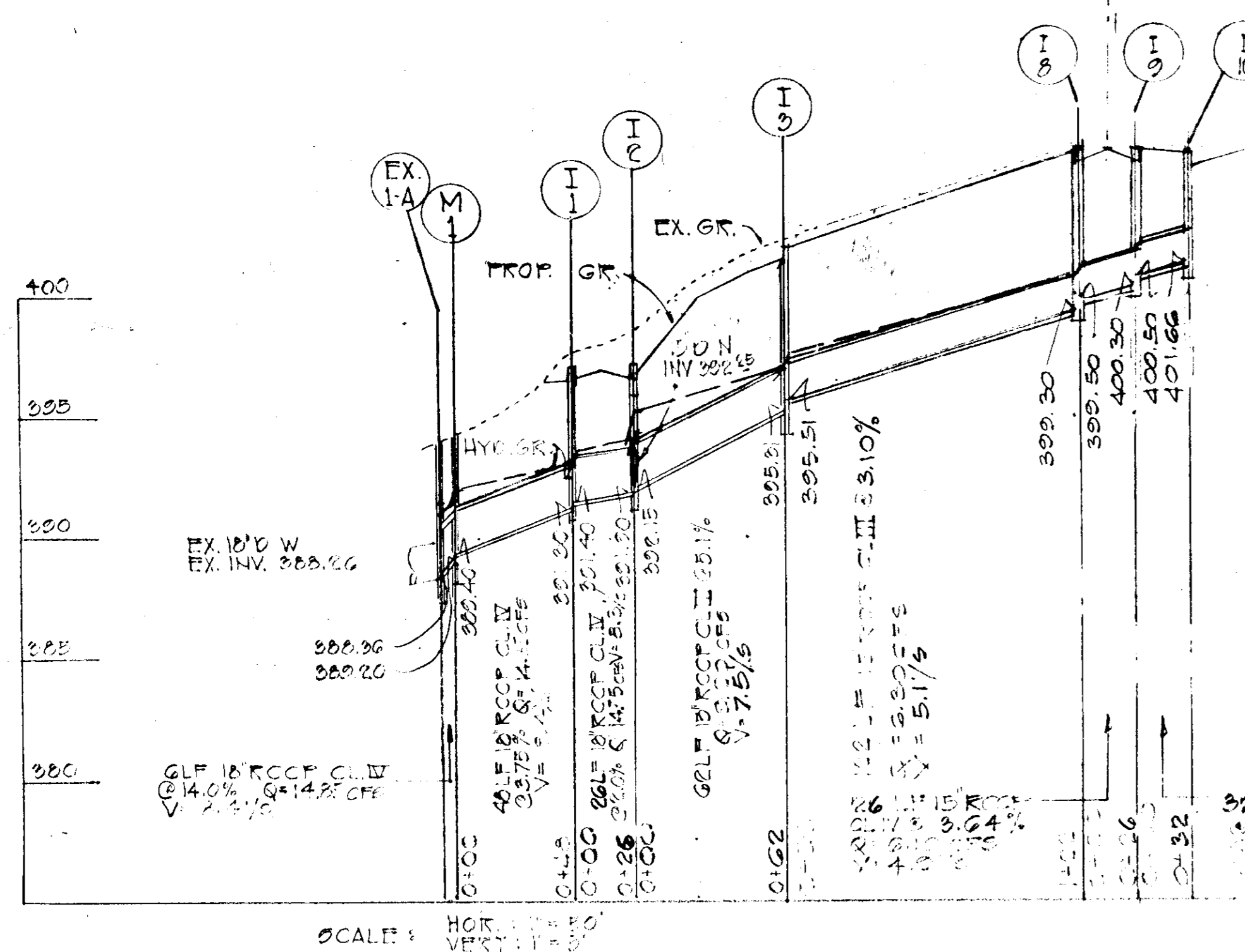
James M. Nelson
U.S. SOIL CONSERVATION SERVICE. DATE: 11-25-74

THIS DEVELOPMENT PLAN IS APPROVED FOR SOIL EROSION AND SEDIMENT CONTROL BY THE HOWARD COUNTY SOIL CONSERVATION DISTRICT.

Robert W. Ziehm
HOWARD COUNTY SOIL CONSERVATION DISTRICT. DATE: 11-25-74

APPROVED
PLANNING BOARD
OF HOWARD COUNTY

DATE: 8-7-74
Thomas L. Harris



APPROVED FOR PUBLIC WATER AND PUBLIC SEWERAGE SYSTEMS
HOWARD COUNTY HEALTH DEPARTMENT.

J. Stacey MD 12/11/74
HOWARD COUNTY HEALTH OFFICER DATE
APPROVED HOWARD COUNTY OFFICE OF PLANNING AND ZONING.
Thomas L. Harris 12-12-74
PLANNING DIRECTOR DATE

J. H. Clawson 12/12/74
CHIEF DIVISION OF LAND DEVELOPMENT AND TRANSPORTATION PLANNING. DATE
APPROVED FOR PUBLIC WATER AND PUBLIC SEWERAGE AND STORM DRAINAGE SYSTEMS AND ROADS.

Will - A. Oster 12/2/74
DIRECTOR DATE

J. M. Mclelland 12/2/74
CHIEF, BUREAU OF HIGHWAYS DATE



Philip A. Pappalardo
11/18/74

TITLE STORM DRAIN PROFILES			
PROJECT COLUMBIA RELIGIOUS FACILITIES CORP. VILLAGE OF OAKLAND MILLS SEC. 4, AREA 4007			
LOCATION 6 TH ELECTION DISTRICT, HOWARD CO., MD.		DATE: 5/20/74	
DES. BY: J.E.	DRAWN BY: J.D.	CHKD. BY: J.E.	DATE: 11/18/74
SCALE: AS SHOWN	JOB NO: 1410	DRWG. NO: 4	DATE: 11/18/74

ENGINEERING
PLANNING
SURVEYING
BY
BOENDER ASSOCIATES INC.
BALTIMORE, MD. 466-7777
SALISBURY, MD. 749-1286
WESTMINSTER, MD. 548-9588

SEDIMENT CONTROL NOTES

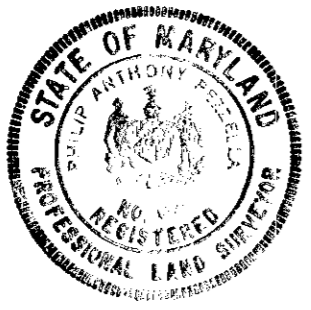
- 1) THE H. S. C. D. AND BUREAU OF LICENSE, INSPECTION, AND PERMITS WILL BE GIVEN 24 HOURS NOTICE PRIOR TO ANY GRADING.
- 2) ALL SEDIMENT CONTROL STRUCTURES SHOWN ON THIS PLAN, UNLESS OTHERWISE SPECIFIED, WILL BE INSTALLED AND STABILIZED IN ACCORDANCE WITH NOTE #9 PRIOR TO ANY OTHER GRADING OR EARTH DISTURBANCE ON THIS SITE.
- 3) AS SOON AS ROUGH GRADING IS COMPLETED, AREA TO BE PAVED WILL BE STABILIZED WITH BASE MATERIAL.
- 4) ALL CUT AND FILL SLOPES WILL BE A MAXIMUM OF 3 : 1.
- 5) FOLLOWING THE STABILIZATION OF ALL AREAS, UPGRADE THE AREA OF THE SEDIMENT CONTROL MEASURES TO BE REMOVED AND GRADED TO THE FINAL GRADES PLANNED AND STABILIZED IMMEDIATELY.
- 6) ELEVATIONS MARKED THUS (X) ARE FINISHED GRADES.
- 7) IN THE EVENT OF EXCESS OF MATERIAL, THE WASTE WILL BE STOCKPILED WITH A MAXIMUM 2:1 SLOPE ON AN AREA WHICH HAS BEEN CLEARED ON THE SITE. STOCKPILED MATERIAL WILL BE STABILIZED IN ACCORDANCE WITH NOTE #9.
- 8) SEDIMENT CONTROL MEASURES WILL NOT BE REMOVED UNTIL APPROVAL IS OBTAINED FROM THE H. S. C. D..
- 9) **TEMPORARY STABILIZATION:**
APPLY: 2000 LBS. / ACRE OR 46 LBS. / SQ. FT. OF PULVERIZED DOLOMITIC LIMESTONE.
500 LBS. / ACRE OR 11.5 LBS. / 1000 SQ. FT. OF 5-5-5 FERTILIZER. PLANT TO RYEGRASS @ 40 LBS. / ACRE. FERTILIZE WITH 5-10-10, AND MULCH WITH STRAW @ 1 1/2 TONS / ACRE.
- 0) **PERMANENT STABILIZATION:**
APPLY: 2000 LBS. / ACRE OF PULVERIZED DOLOMITIC LIMESTONE.
700 LBS. / ACRE OF 0-20-0 SUPER PHOSPHATE.
1000 LBS. / ACRE OF 5-10-10 FERTILIZER.
SEED: 85 LBS. / ACRE OF KENTUCKY 31 TALL FESCUE.
40 LBS. / ACRE OF KENTUCKY BLUE GRASS.
25 LBS. / ACRE OF ANNUAL RYE GRASS.
NOTE: SEEDING MAY BE DONE BETWEEN MARCH 1 - MAY 1, OR AUGUST 1 - OCTOBER 1 ONLY.
MULCH: 2 TONS / ACRE OF UNWEATHERED WHEATSTRAW, TIE MULCH DOWN WITH 480 GAL. / ACRE OF LIQUID ASPHALT.

REVIEWED FOR Howard S. C. D. AND MEETS TECHNICAL REQUIREMENTS.
U. S. SOIL CONSERVATION SERVICE 11-25-74 DATE

THIS DEVELOPMENT PLAN IS APPROVED FOR SOIL EROSION AND SEDIMENT CONTROL BY THE HOWARD SOIL CONSERVATION DISTRICT
APPROVED: Charles J. Seaman 11-25-74 DATE
HOWARD SOIL CONSERVATION DIST.

ENGINEER'S STATEMENT

I CERTIFY THAT THIS PLAN FOR EROSION AND SEDIMENT CONTROL REPRESENTS A PRACTICAL AND WORKABLE PLAN BASED ON MY PERSONAL KNOWLEDGE OF THE SITE CONDITIONS AND THAT IT WAS PREPARED IN ACCORDANCE WITH THE REQUIREMENTS OF THE HOWARD SOIL CONSERVATION DISTRICT.
Philip A. Koyell 3/14/74 DATE

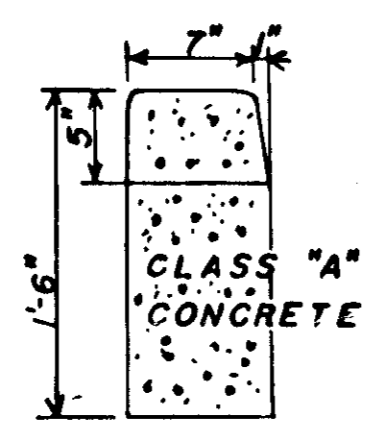
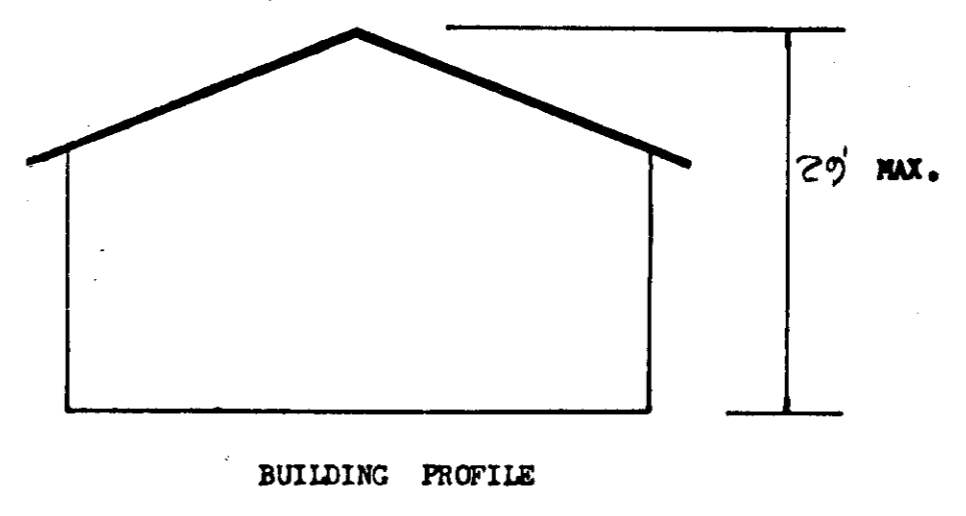
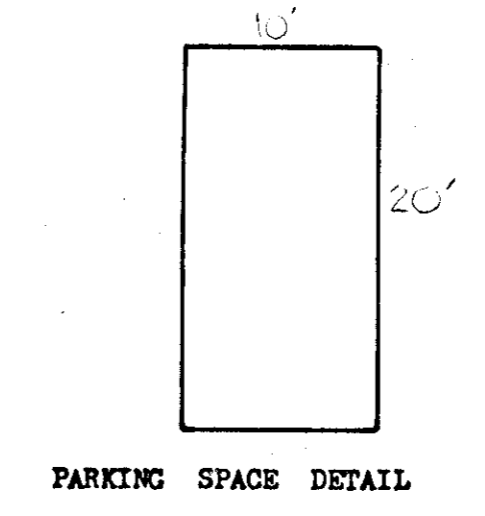
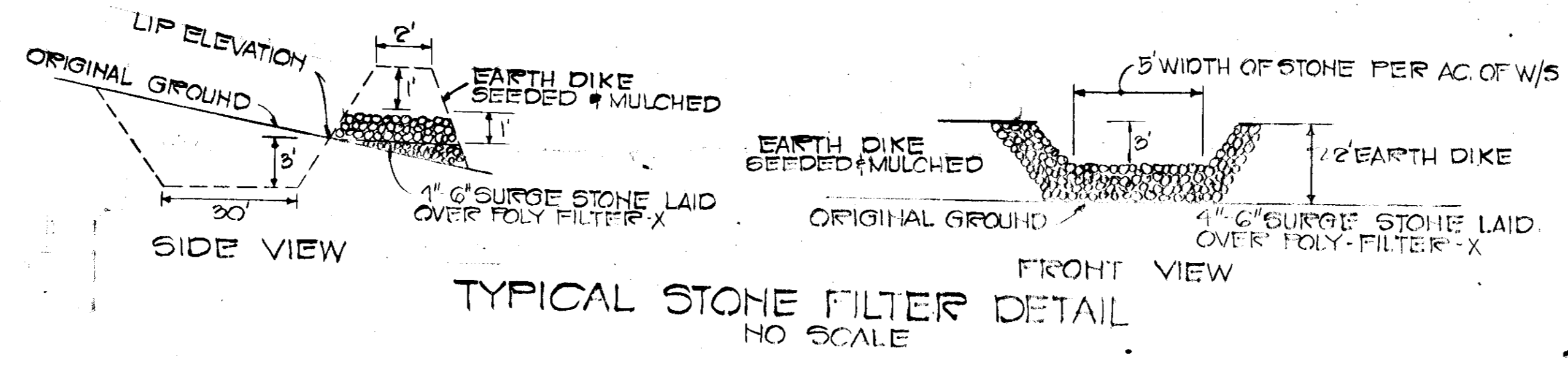


DEVELOPER'S STATEMENT

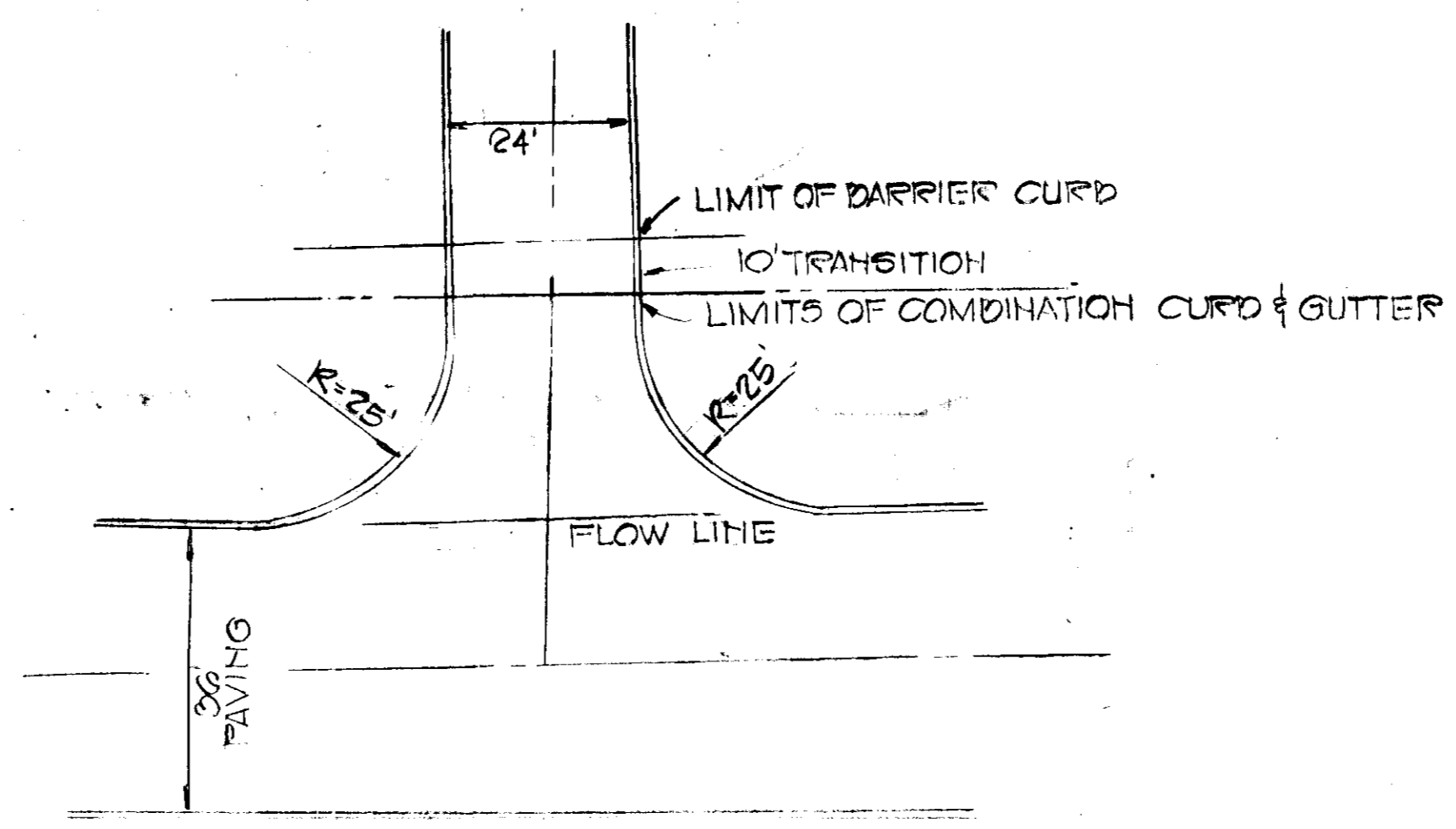
I CERTIFY THAT ALL THE DEVELOPMENT AND / OR CONSTRUCTION WILL BE DONE ACCORDING TO THIS PLAN OF DEVELOPMENT AND PLAN FOR EROSION AND SEDIMENT CONTROL, AND I ALSO AUTHORIZE PERIODIC ON - SITE INSPECTION BY THE HOWARD SOIL CONSERVATION DISTRICT OR THEIR AUTHORIZED AGENTS, AS ARE DEEMED NECESSARY. DEVIATION FROM THIS PLAN WILL NOT BE MADE UNLESS AUTHORIZED BY THE HOWARD SOIL CONSERVATION DISTRICT.
John Ambs 3/14/74 DATE

APPROVED
PLANNING BOARD
OF HOWARD COUNTY

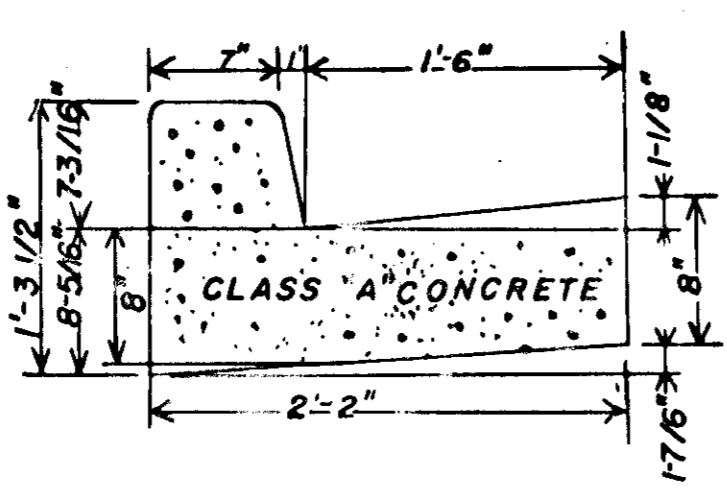
DATE 3/14/74
Thomas G. Harris



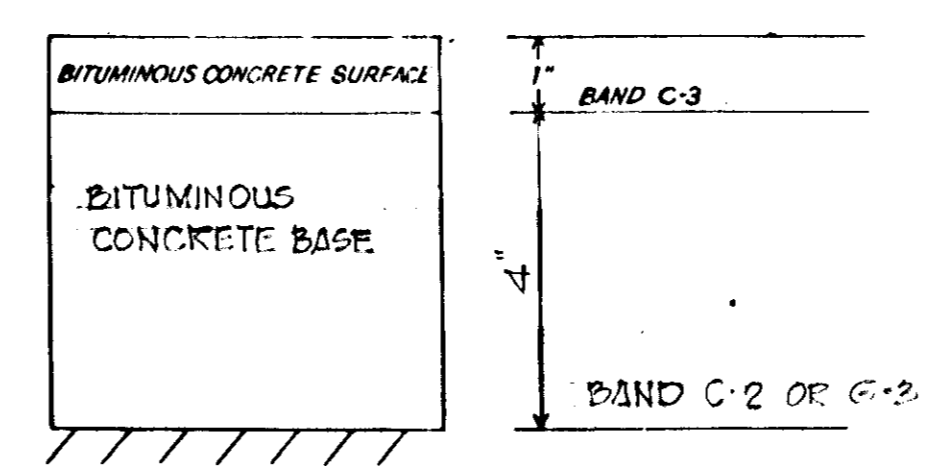
BARRIER CURB DETAIL



ENTRANCE DETAIL
NO SCALE



COMBINATION CURB & GUTTER DETAIL



CLEARING and GRADING: ARTICLE C-1
SUBGRADE: ARTICLE C-2
BASE COURSE: ARTICLE C-21 OR C-2B
SURFACE COURSE: ARTICLE C-31
TO BE CONSTRUCTED IN ACCORDANCE WITH THE HOWARD COUNTY ROAD CONSTRUCTION CODE AND SPECIFICATIONS

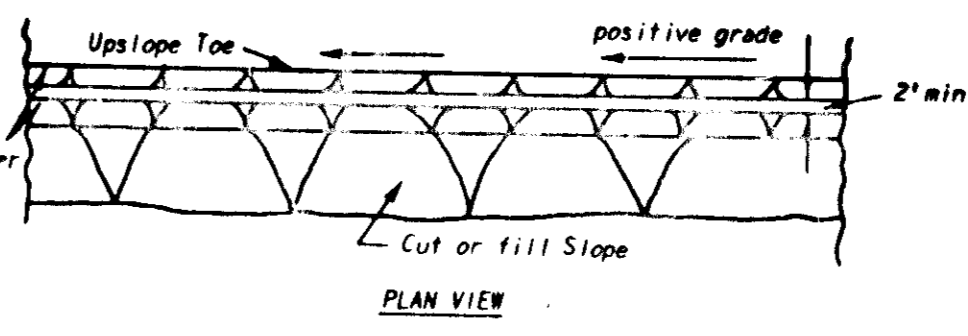
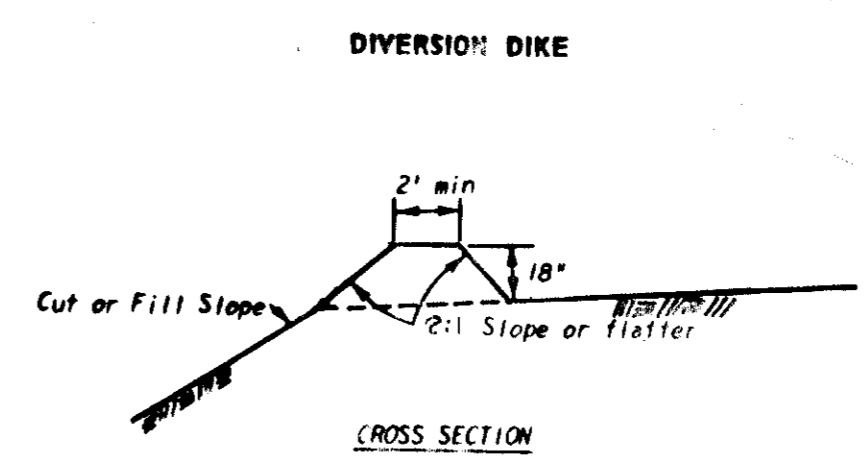
ON SITE PAVING

- PAVING SPECIFICATION**
- 1) BASE WILL BE PRIMED IN ACCORDANCE WITH SECTION C-30-3 AS PROVIDED IN THE HOWARD COUNTY ROAD CONSTRUCTION CODE AND STANDARD SPECIFICATIONS.
 - 2) TACK COAT IS REQUIRED IN ACCORDANCE WITH SECTION C-31-4 OF THE HOWARD COUNTY ROAD CONSTRUCTION CODE AND STANDARD SPECIFICATIONS.

BITUMINOUS CONCRETE SURFACE	1 1/2\"/>	
BITUMINOUS CONCRETE BASE (PLACED IN ONE COURSE)	1\"/>	
	BAND C-2 OR C-2B	
		FINAL PHASE
		FIRST PHASE

CLEARING & GRADING: ARTICLE C-1
SUBGRADE: ARTICLE C-2
BASE COURSE: ARTICLE C-21 OR C-2B
SURFACE COURSE: ARTICLE C-31
TO BE CONSTRUCTED IN ACCORDANCE WITH THE HOWARD COUNTY ROAD CONSTRUCTION CODE AND SPECIFICATIONS.

PAVING OF DRIVEWAY WITHIN RIGHT OF WAY



- General Notes:**
1. All drawings Not to Scale.
 2. All dikes must be machine compacted.
 3. All diversion dikes must have positive grade draining to a stabilized outlet.
 4. Diverted runoff will outlet onto a stabilized undisturbed area, a prepared level spreader, or into a grade stabilization structure.
 5. Periodic inspection and required maintenance must be provided.

TITLE	DETAIL SHEET		ENGINEERING PLANNING SURVEYING BY
PROJECT	COLUMBIA RELIGIOUS FACILITIES CORP. VILLAGE OF OAKLAND MILLS, SEC 2, AREA 4, LOT 7		BOENDER ASSOCIATES INC.
LOCATION	GIBBLETON DISTRICT, HOWARD COUNTY, MD.		ELLCOTT CITY, MD. 21043
DATE:	2/21/74	DES. BY: T.K.G.	SALESBURY, MD. 21801
SCALE:	1\"/>		
JOE NO.:	7410	DRWG. NO.:	5015