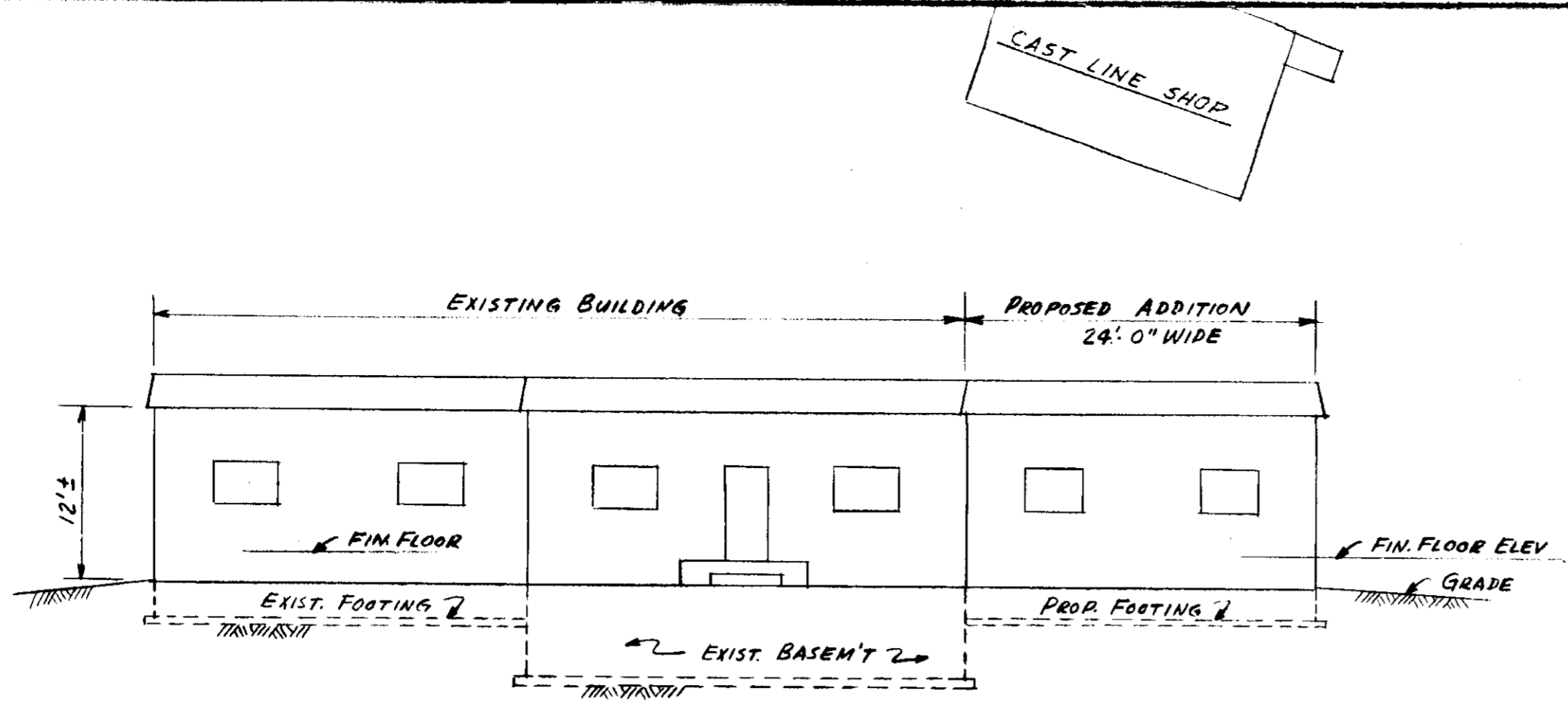
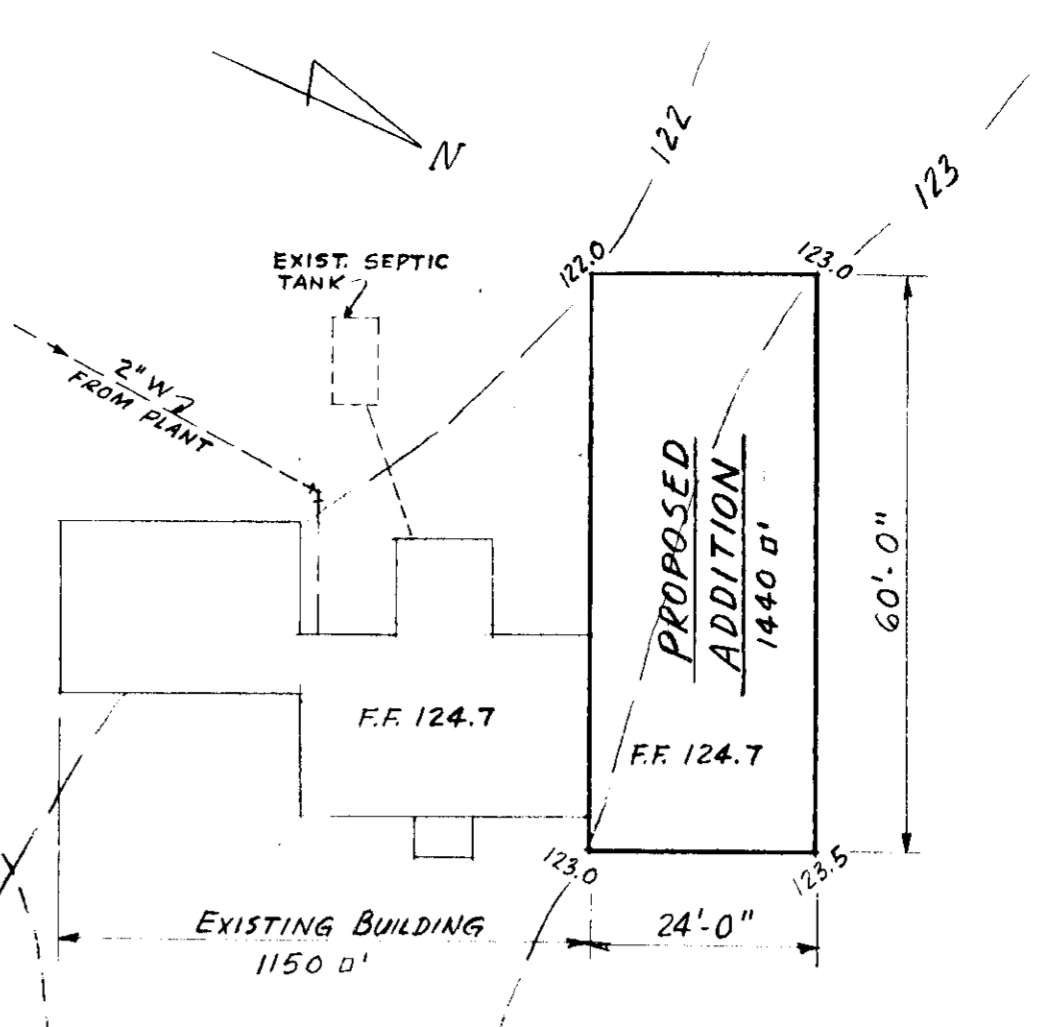


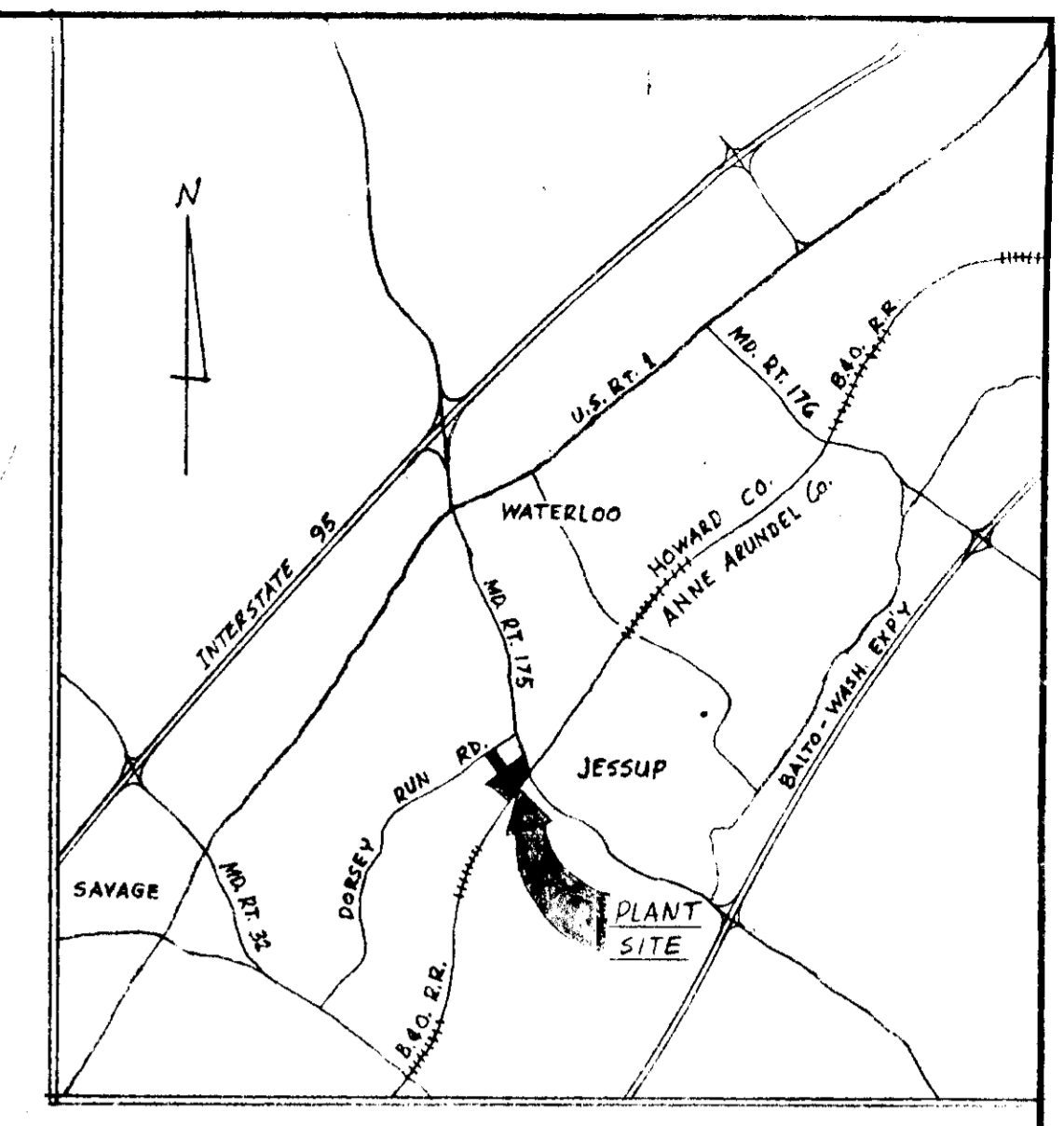
MAIN LINE - B. & O. RAILROAD



NORTHEAST ELEVATION - PROPOSED ADDITION
SCALE: 1" = 10'

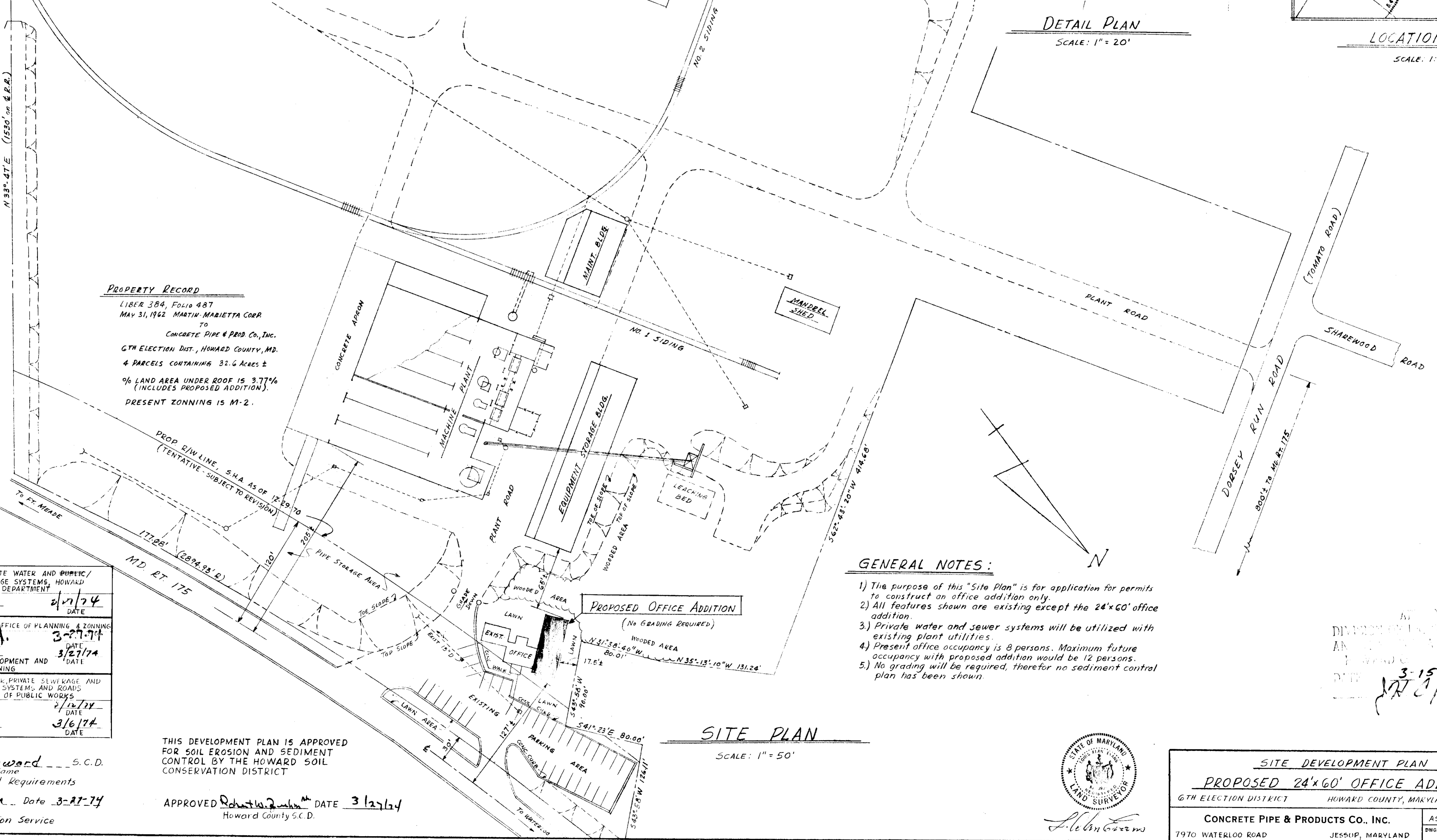


DETAIL PLAN
SCALE: 1" = 20'



LOCATION PLAN
SCALE: 1:62500

PROPERTY RECORD
LIBER 384, Folio 487
MAY 31, 1962 MARTIN MARIETTA CORP
TO
CONCRETE PIPE & PROD. CO., INC.
6TH ELECTION DIST., HOWARD COUNTY, MD.
4 PARCELS CONTAINING 32.6 Acres ±
% LAND AREA UNDER ROOF IS 3.77%
(INCLUDES PROPOSED ADDITION)
PRESENT ZONING IS M-2.



SITE PLAN
SCALE: 1" = 50'

GENERAL NOTES:

- 1) The purpose of this "Site Plan" is for application for permits to construct an office addition only.
- 2) All features shown are existing except the 24'x60' office addition.
- 3) Private water and sewer systems will be utilized with existing plant utilities.
- 4) Present office occupancy is 8 persons. Maximum future occupancy with proposed addition would be 12 persons.
- 5) No grading will be required, therefore no sediment control plan has been shown.

APPROVED FOR PUBLIC PRIVATE WATER AND SEWERAGE SYSTEMS, HOWARD COUNTY HEALTH DEPARTMENT
William M. O'Neil 2/27/74
COUNTY HEALTH OFFICER DATE

APPROVED HOWARD COUNTY OFFICE OF PLANNING & ZONING
William L. ... 3-27-74
PLANNING DIRECTOR DATE

APPROVED FOR PRIVATE WATER, PRIVATE SEWERAGE AND STORM DRAINAGE SYSTEMS AND ROADS
HOWARD COUNTY DEPARTMENT OF PUBLIC WORKS
William A. ... 2/12/74
DIRECTOR DATE

William A. ... 3/6/74
CHIEF BUREAU OF HIGHWAYS DATE

THIS DEVELOPMENT PLAN IS APPROVED FOR SOIL EROSION AND SEDIMENT CONTROL BY THE HOWARD SOIL CONSERVATION DISTRICT

APPROVED *Robert W. ...* DATE 3/27/74
Howard County S.C.D.

Reviewed for Howard S.C.D. Name
and meets Technical Requirements
William A. ... Date 3-27-74
Signature
S. Soil Conservation Service



SITE DEVELOPMENT PLAN
PROPOSED 24'x60' OFFICE ADDITION
6TH ELECTION DISTRICT HOWARD COUNTY, MARYLAND TAX MAP NO. 43
CONCRETE PIPE & PRODUCTS CO., INC. SCALE AS SHOWN DRAWN BY G.D.R. DATE 12-31-73
7970 WATERLOO ROAD JESSUP, MARYLAND DWG NO. J74-0102

DATE 3-15-74
William A. ...