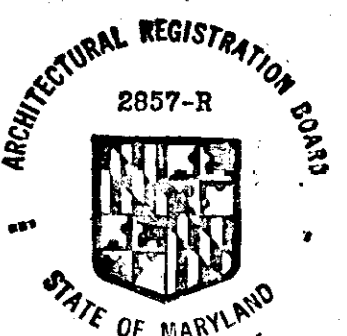


OPEN SPACE LOT NO. 45  
OPEN SPACE AREA - 1.88  
VILLAGE OF WATERS CHOICE  
SECTION 3  
AREA IN  
13<sup>TH</sup> ELECTION DISTRICT  
HOWARD COUNTY MD

DATE Jan 9, 1974  
NOTE: Thomas St. Haning  
THE LIMIT OF THE 100 YR FLOOD PLAIN IS  
NOT WHERE NEAR THE PROJECT AREA AND  
THEREFORE IS NOT A CONSIDERATION.



REVIEWED FOR HOWARD CO. CD  
AND MEETS TECHNICAL REQUIREMENTS  
James M. Lela 2-1-74  
SIGNATURE DATE  
U.S. SOIL CONSERVATION SERVICE

THIS DEVELOPMENT PLAN IS  
APPROVED FOR SOIL EROSION  
AND SEDIMENT CONTROL BY  
THE SOIL CONSERVATION DISTRICT  
APPROVED  
Robert W. Ziehm 2-1-74  
DATE

OWNER:  
COLUMBIA PARK & RECREATION  
1000 CENTURY TRAIL  
10630 LITTLE PATENT PARKWAY  
7206-20

**COLUMBIA MARYLAND**

**COLUMBIA ASSOCIATION**

APPROVED For Public Water, Public Sewerage  
and Storm Drainage Systems and Roads  
Howard County Department of Public Works  
William Q. Altman 2/1/74  
Director Date  
G. P. Brabant 2/1/74  
Chief, Bureau of Highways Date

APPROVED Howard County Office of Planning & Zoning  
Thomas St. Haning 4-3-74  
Planning Director Date  
J. H. Clavon 4/2/74  
Chief, Division of Land Development and  
Transportation Planning Date

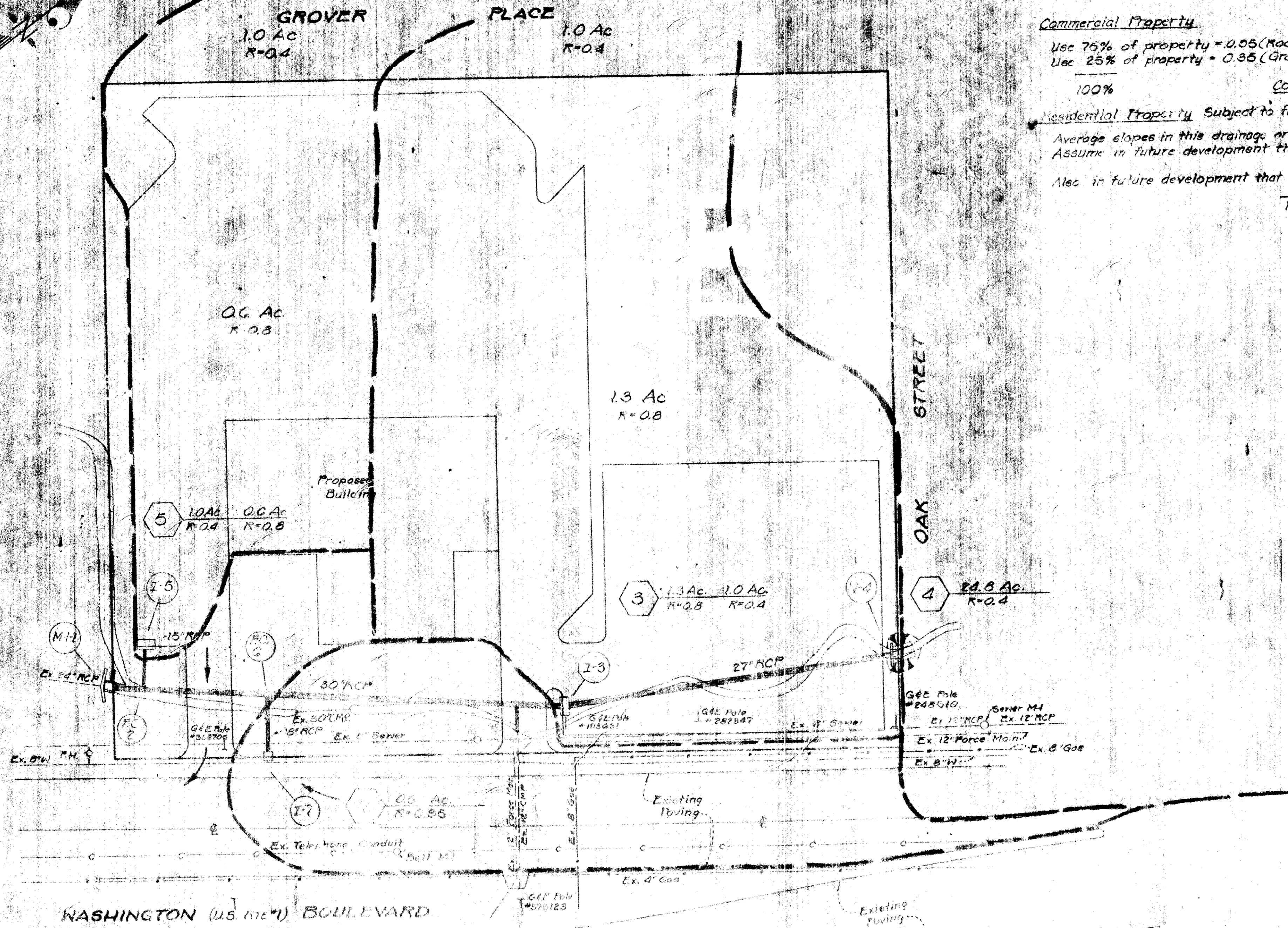
PROJECT TITLE:  
MILLBANK ROW TOT LOT

SUBJECT:  
SITE DEVELOPMENT PLAN

SCALE 1"=100'  
DATE 4-20-73  
DES. BY D.E.  
DWN. BY D.E.  
CK. BY OF 2  
APP. BY CAF NO.

# SITE DEVELOPMENT PLAN

See 1"=200' Scale Drawing N-5004-P for this Area



Derivation of Runoff Coefficients (C factors)  
Refer to Table A of County Design Criteria

Commercial Property

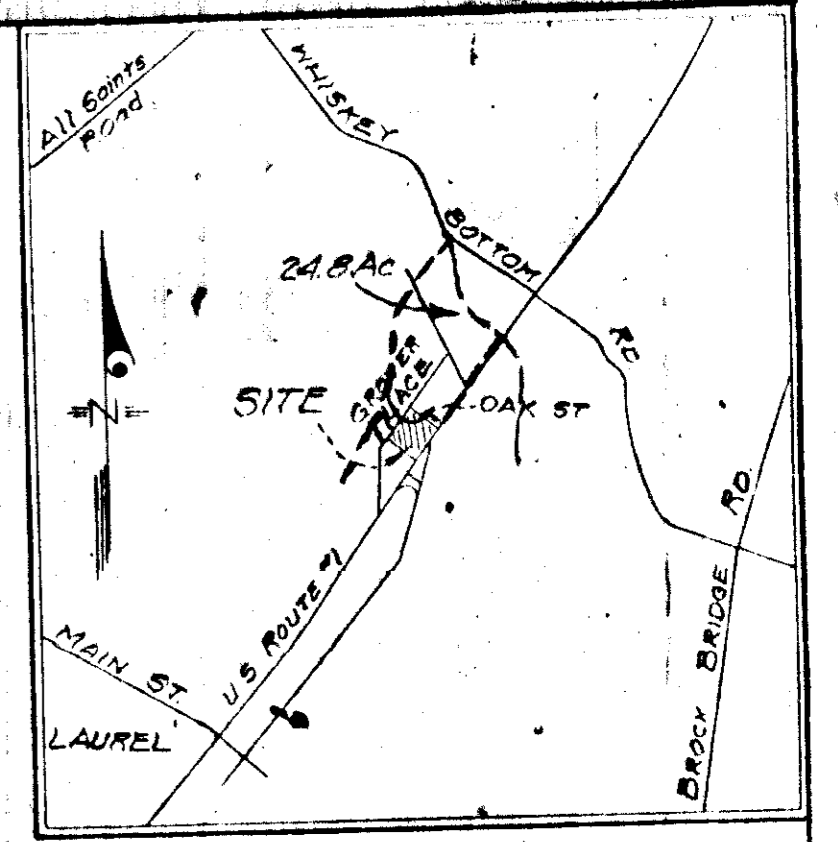
Use 75% of property = 0.05 (Roofs, Parking Lots, etc.) = 0.71  
Use 25% of property = 0.05 (Grass areas, etc.) = 0.09

100% Commercial C factor = 0.80

Residential Property Subject to future development

Average slopes in this drainage area are between 2% & 7%  
Assume in future development that 70% Residential are lots less than 20,000 sq. ft.  
R=0.45 = 0.32  
Also in future development that 30% Residential are lots greater than 20,000 sq. ft.  
R=0.80 = 0.09  
100% Residential C factor = 0.41

Use 0.4



APPROVED FOR PUBLIC USE WATER AND PUBLIC/ SEWERAGE SYSTEMS, HOWARD COUNTY, MARYLAND

*J. H. Clewson* 3/5/74

CITY ENGINEER

AND COUNTY ENGINEER OF PLANNING

*J. H. Clewson* 3/6/74

INVESTIGATED AND FOUND TO BE CORRECT AND ACCURATE

*W. H. D. ...* 2/17/74

*J. M. ...* 2/16/74

DRAINAGE AREA MAP  
LAUREL AMG/JEEP  
LOTS 8-14 & 17-23, BLOCK 7  
NORTH LAUREL PARK  
6TH ELECTION DISTRICT  
HOWARD COUNTY, MARYLAND

APPROVED  
DIVISION OF LAND DEVELOPMENT  
AND TRANSPORTATION PLANNING  
HOWARD COUNTY, MARYLAND  
DATE 1/22/74  
*J. H. Clewson*

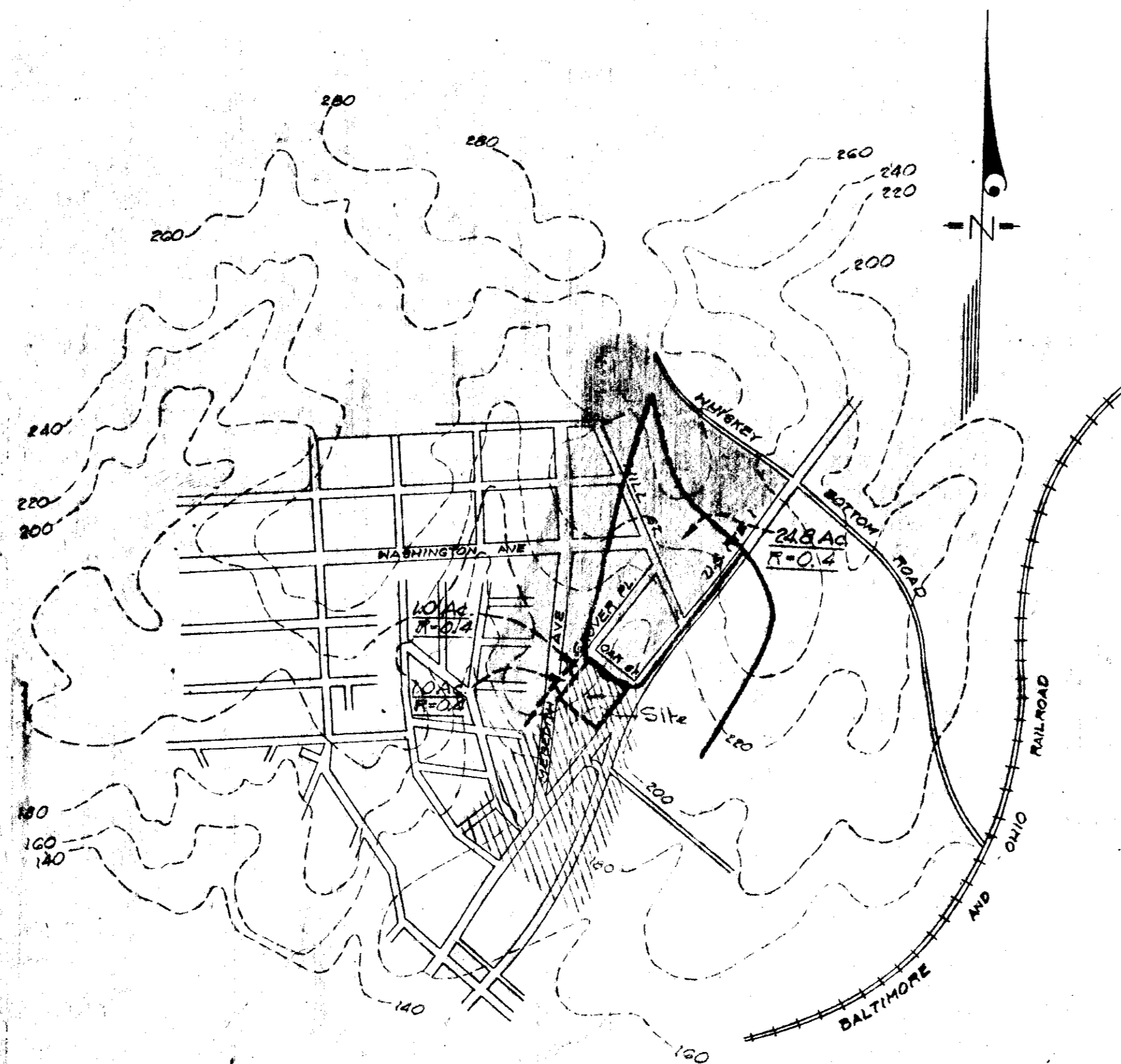


REVISIONS		
DATE	DESCRIPTION	BY
12/22/73	As Co. & M.S. & S. ...	...

2222 CUMMINGS ROAD, BETHESDA, MARYLAND 20814  
BEN DYER ASSOCIATES, INC.  
ENGINEERS, SURVEYORS, PLANNERS  
TELEPHONE 770-8500

DRAWN BY: J. H. Clewson  
SCALE: 1"=200'  
DATE: NOVEMBER 1973  
SDP 14-52

SHEET 2 OF 5 (50)



APPROVED FOR PUBLIC WATER AND PUBLIC SEWERAGE SYSTEMS, HOWARD COUNTY HEALTH DEPARTMENT  
 COUNTY OFFICER J. H. ... DATE 2/1/74

APPROVED BY HOWARD COUNTY OFFICE OF PLANNING AND ZONING  
 COUNTY PLANNING AND ZONING OFFICER J. H. Clauson DATE 3-5-74

APPROVED FOR LAND DEVELOPMENT AND MUNICIPAL PLANNING  
 COUNTY PLANNING AND ZONING OFFICER J. H. Clauson DATE 3/6/74

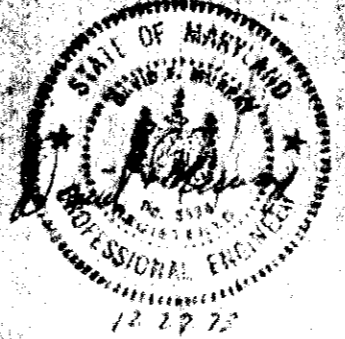
APPROVED FOR PUBLIC WATER, PUBLIC SEWERAGE AND STORM DRAINAGE SYSTEMS AND ROADS  
 HOWARD COUNTY DEPARTMENT OF PUBLIC WORKS  
 DIRECTOR W. B. ... DATE 2/1/74

APPROVED FOR HIGHWAYS  
 COUNTY BUREAU OF HIGHWAYS  
 DIRECTOR D. M. ... DATE 2/16/74

Commercial, R-0.8  
 Residential, R-0.4

OVER-ALL  
 DRAINAGE AREA MAP  
 LAUREL AMC JEEP  
 LOTS 8-14 #17-23, BLOCK 7  
**NORTH LAUREL PARK**  
 6<sup>TH</sup> ELECTION DISTRICT  
 HOWARD COUNTY, MARYLAND

APPROVED  
 DIVISION OF LAND DEVELOPMENT  
 AND TRANSPORTATION PLANNING  
 HOWARD COUNTY, MARYLAND  
 DATE 1/22/74  
J. H. Clauson



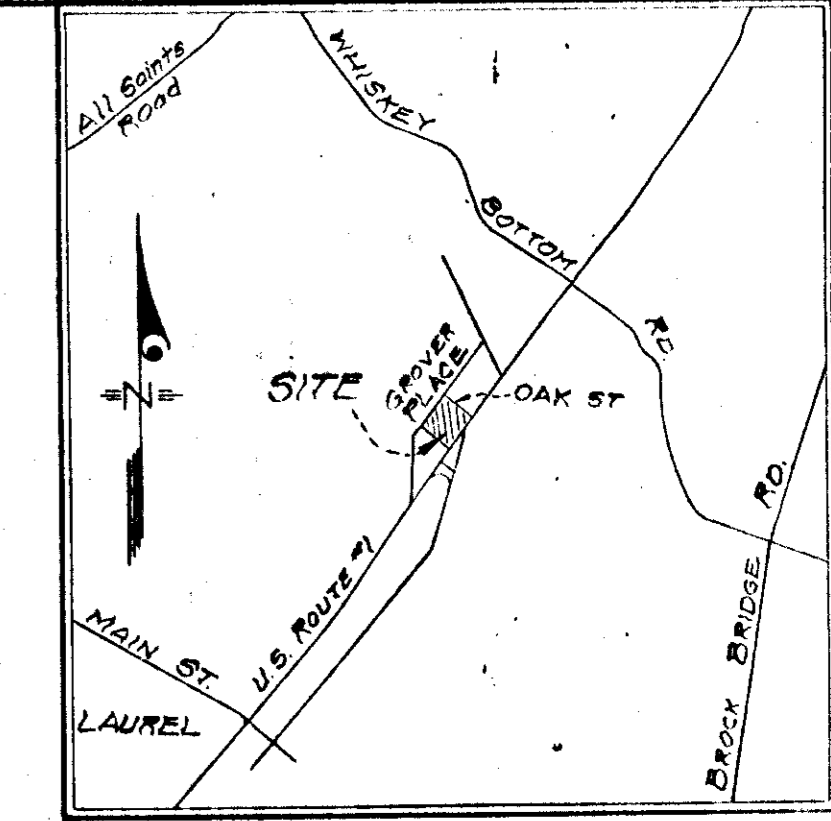
REVISIONS		
DATE	DESCRIPTION	BY

4205 QUEENSBURY ROAD RIVERDALE, MARYLAND 20840  
**BEN DYER ASSOCIATES, INC.**  
 ENGINEERS SURVEYORS PLANNERS  
 TELEPHONE 779-8500

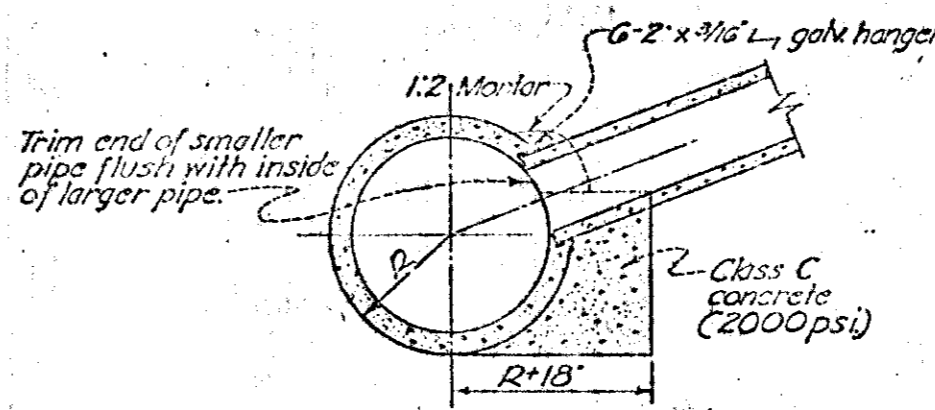
DRAWN BY WFM CHECKED BY JECF RECORD NO. J-73084  
 SCALE 1" = 800'  
 DATE December, 1973 DRAWN NO. 8004-F

STRUCTURE SCHEDULE					
No	TYPE	TOP ELEVATION UPPER	TOP ELEVATION LOWER	INVERT ELEV IN	REMARKS
M-1	Manhole	182.0	176.0	176.80	Howard Co. Std. 1' Dia. 10' dia
FC-2	Field Conn.	---	177.4	176.3	See Detail
I-3	Double 6' Comb. Inlet	180.0	181.3	180.0	Howard Co. Std. D-30 Log 18" dia
W-4	Endwall 27" dia.	---	180.0	---	Ho. Co. Std. Type C D-52 pg 127
I-5	Double 6' Comb. Inlet	185.5	---	175.7	Ho. Co. Std. D-30 pg 154
FC-6	Field Conn.	---	178.4	177.46	See Detail this sheet
I-7	11' Comb. Inlet	185.5	---	183.8	MDOT Std. 11' Dia. 10' dia

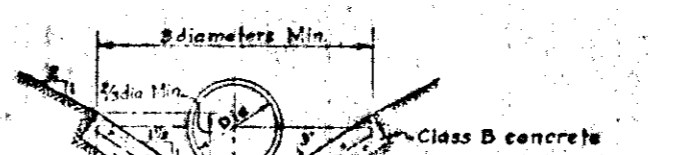
PIPE SCHEDULE		
SIZE	TYPE	LENGTH
12"	CMP 1200'	11'
18"	RCP cl IV	25'
18"	RCP cl IV	20'
27"	RCP cl IV	142'
30"	RCP cl IV	200'



Note: (1) Elev for top of structure given at top of curb section.  
 (2) Existing 24" RCP



15' x 30' FIELD CONNECTION DETAIL  
 No SCALE

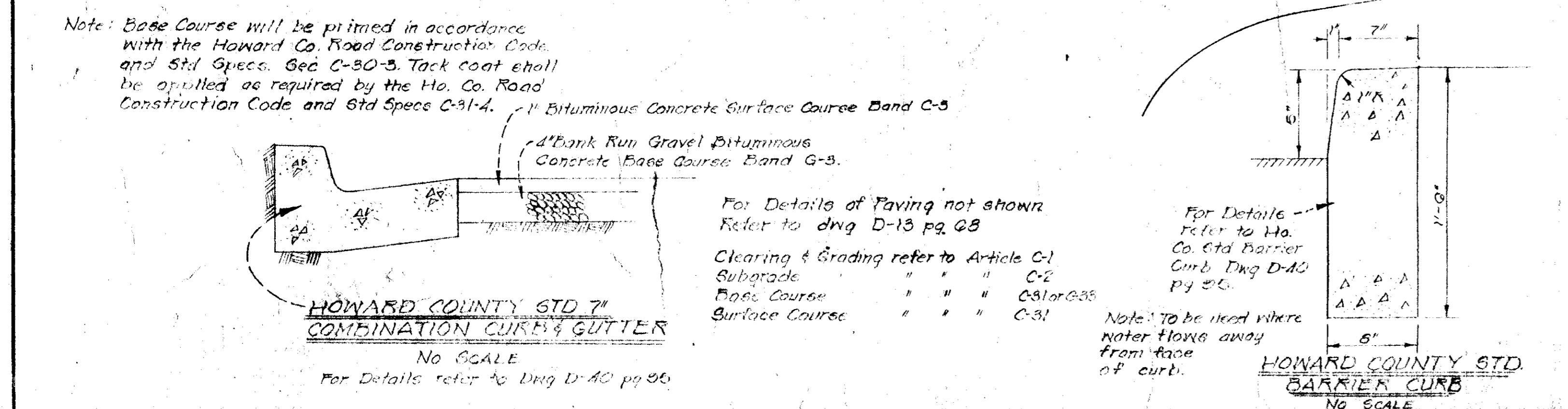
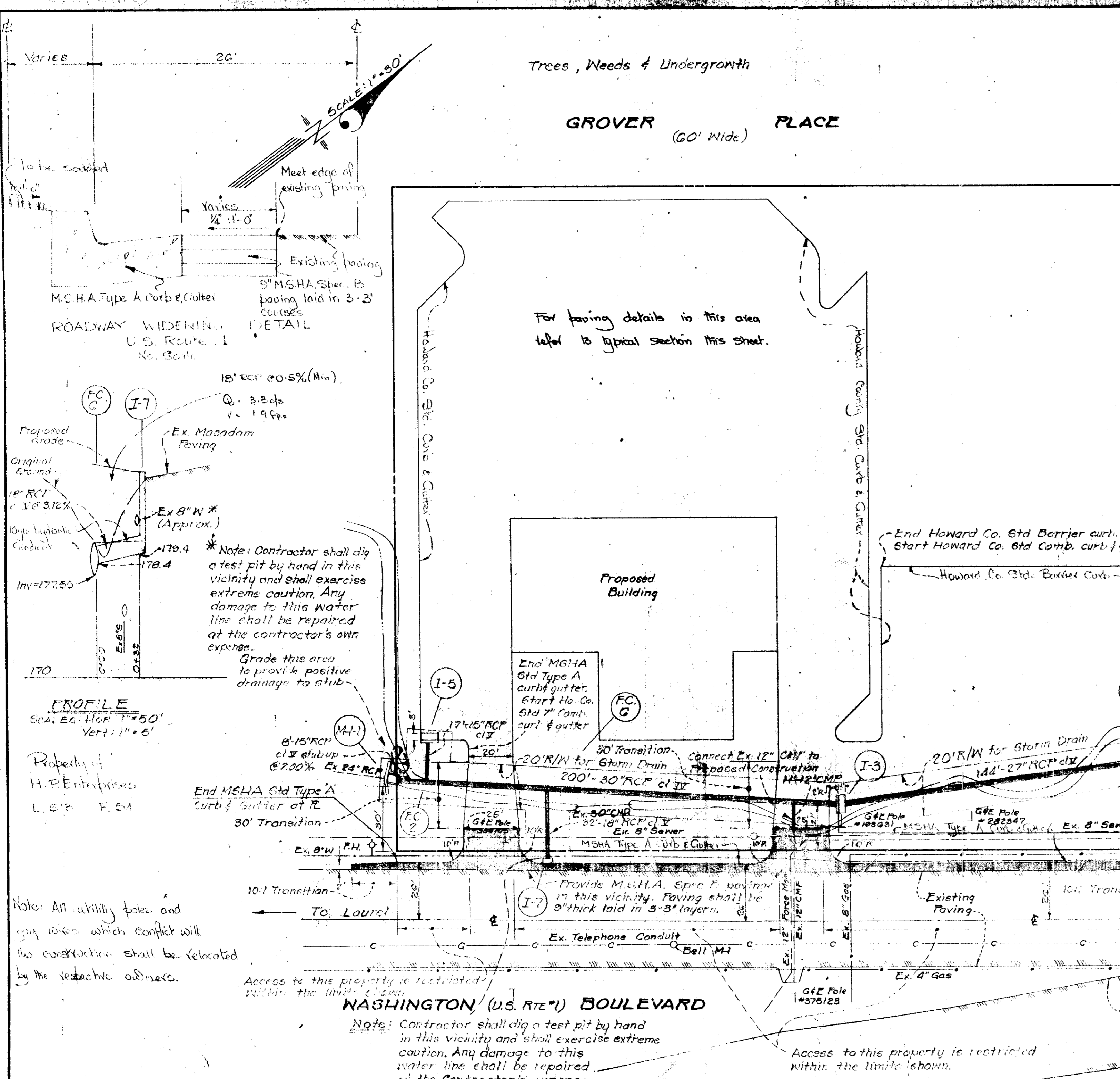


6" CONCRETE PAVING DETAIL  
 No SCALE

\* Pipe to be Asphalt coated and paved.

VICINITY MAP  
 SCALE: 1" = 2000'

Use Arma (or Approved equal) fabric placed all over to cover existing RCP. Use Hydraulic Choker. 11" - 18" Comp. 10 ga. Asphalt Coating 2" dia.



APPROVED FOR PUBLIC WATER AND PUBLIC SEWERAGE SYSTEMS, HOWARD COUNTY, MARYLAND

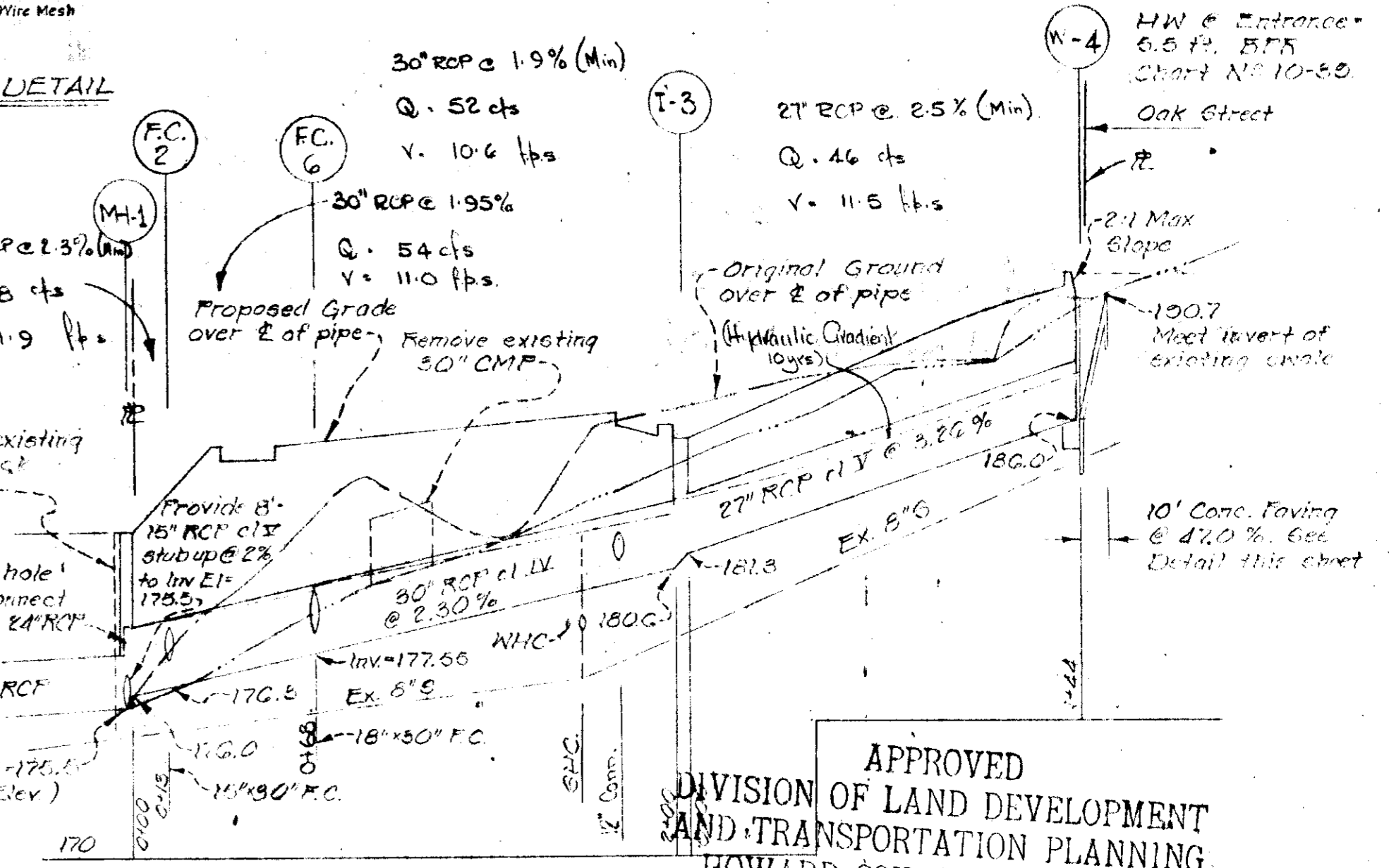
*John J. Harbaugh* 3/5/74  
 COUNTY ENGINEER

*John J. Harbaugh* 3/5/74  
 COUNTY ENGINEER

*John J. Harbaugh* 3/6/74  
 COUNTY ENGINEER

*John J. Harbaugh* 3/6/74  
 COUNTY ENGINEER

*John J. Harbaugh* 3/6/74  
 COUNTY ENGINEER



PROFILES  
 SCALE: HOR 1" = 50' VERT 1" = 5'

APPROVED  
 DIVISION OF LAND DEVELOPMENT AND TRANSPORTATION PLANNING  
 HOWARD COUNTY, MARYLAND  
 DATE 6/22/74  
*J. J. Harbaugh*

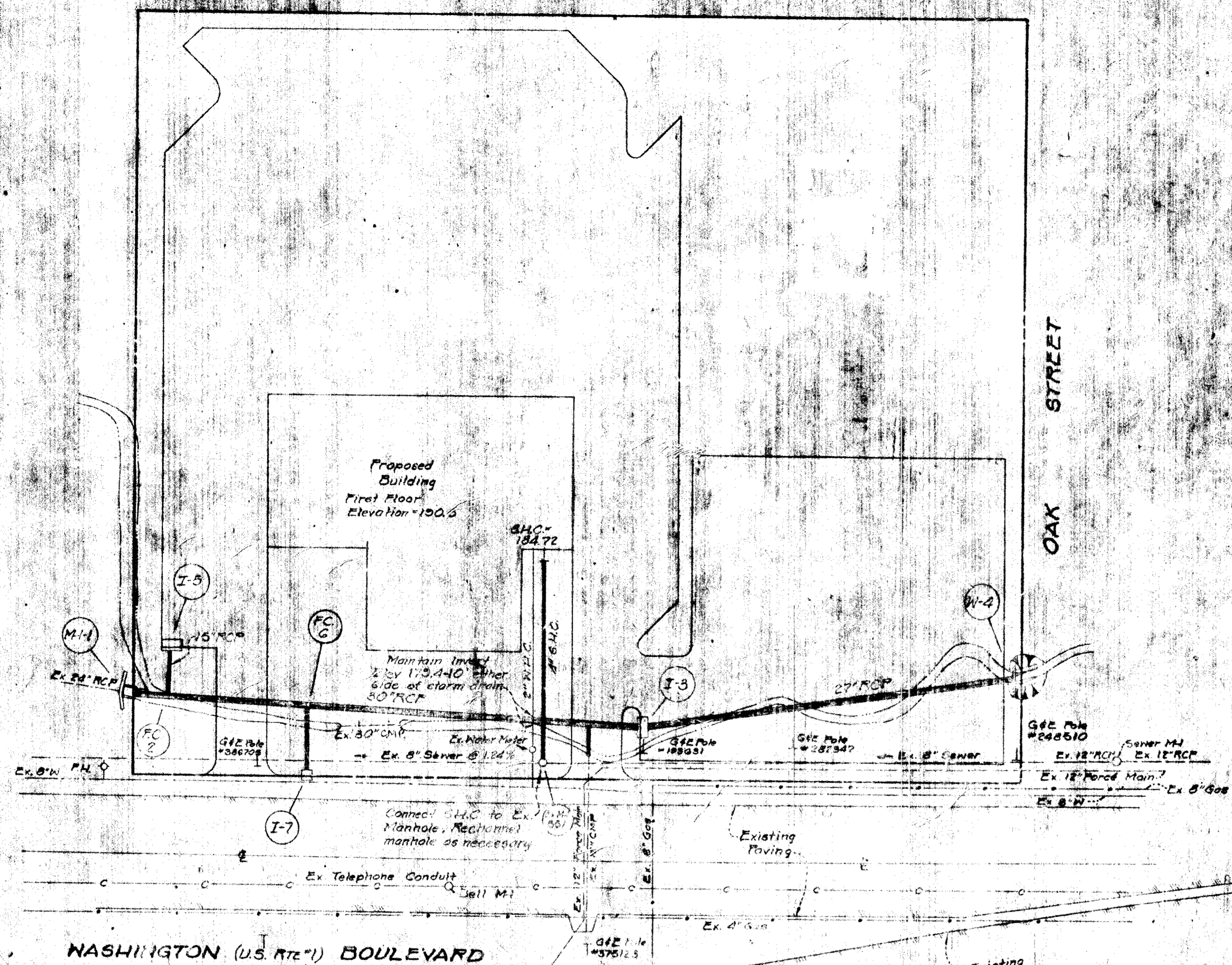
STORM DRAINAGE, PAVING & DRIVEWAY ENTRANCE PLAN  
 LAUREL AMC/JEEP  
 LOTS 8-14 & 17-23, BLOCK 7  
 NORTH LAUREL PARK  
 6TH ELECTION DISTRICT  
 HOWARD COUNTY, MARYLAND

SHEET 4 OF 5

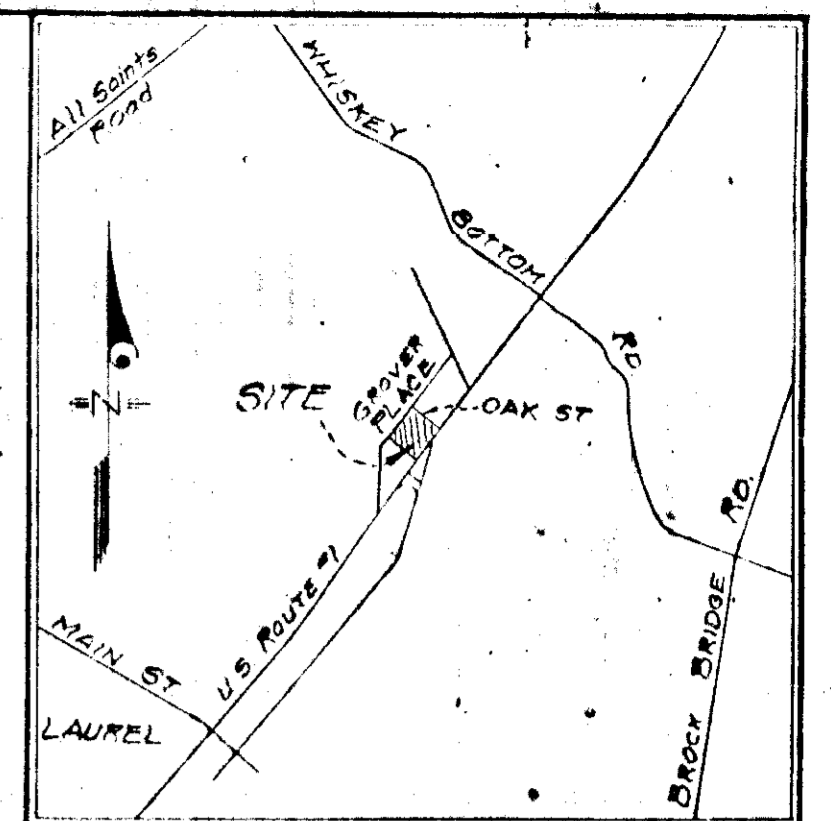
REVISIONS		
DATE	DESCRIPTION	BY
11-2-74	As Shown	JCH
11-2-74	As Shown	JCH
11-2-74	As Shown	JCH

SDP 74-52

GROVER PLACE



- ON SITE WATER & SEWER NOTES
1. Approximate location of existing utilities is shown. The Contractor shall take all necessary precautions to protect existing utilities and to maintain uninterrupted service. Any damage incurred shall be repaired immediately to the satisfaction of the Engineer by the Contractor at the Contractor's expense.
  2. The Contractor shall locate existing utilities a minimum of two weeks in advance of construction operations in vicinity of utilities. Cost shall be included in the unit prices bid for excavation.
  3. Clear all utilities by a minimum of 6". Clear all poles 2'-0" minimum, or tunneling or hacing at poles shall be included in the unit prices bid for excavation.
  4. All pipe elevations shown are invert elevations.
  5. The Contractor shall provide a pipe joint in each sewer main within 2'-0" of the exterior of manhole walls.
  6. For details not shown on the Contract Drawings see Standard Details.
  7. Trees are to be protected from damage to the maximum extent.
  8. Place regulation "Men Working" and warning signs as required to comply with Maryland State Highway Administration Manual of Traffic Control for Highway Construction and Maintenance Operations.
  9. Horizontal and Vertical controls are based on the Maryland State Grid Coordinate System.
  10. All sewer pipe shall be CSEK, VCPK or Asbestos Cement Pipe Class 2400.



VICINITY MAP  
SCALE: 1"=2000'

APPROVED FOR PUBLIC WATER AND PUBLIC SEWERAGE SYSTEMS, HOWARD COUNTY HEALTH DEPARTMENT

*John G. ...* 2/5/74  
 COUNTY HEALTH OFFICER

*Thomas A. ...* 3-5-74  
*J. H. ...* 3/6/74  
 COUNTY OFFICE OF PLANNING AND ZONING

*Walt - O. ...* 2/1/74  
*W. O. ...* 2-21-74  
 COUNTY DEPARTMENT OF PUBLIC WORKS

WATER & SEWER  
 HOUSE CONNECTIONS  
 LAUREL AMC/JEEP  
 LOTS 8-14, 17-23, BLOCK 7  
 NORTH LAUREL PARK  
 6TH ELECTION DISTRICT  
 HOWARD COUNTY, MARYLAND

APPROVED  
 DIVISION OF LAND DEVELOPMENT  
 AND TRANSPORTATION PLANNING  
 HOWARD COUNTY, MARYLAND  
 DATE 6/22/74  
*J. H. ...*



SHEET 3 OF 5 (50)

REVISIONS		
DATE	DESCRIPTION	BY

BEN DYER ASSOCIATES, INC.  
 REGISTERED SURVEYORS & ENGINEERS  
 TELEPHONE 779-8500

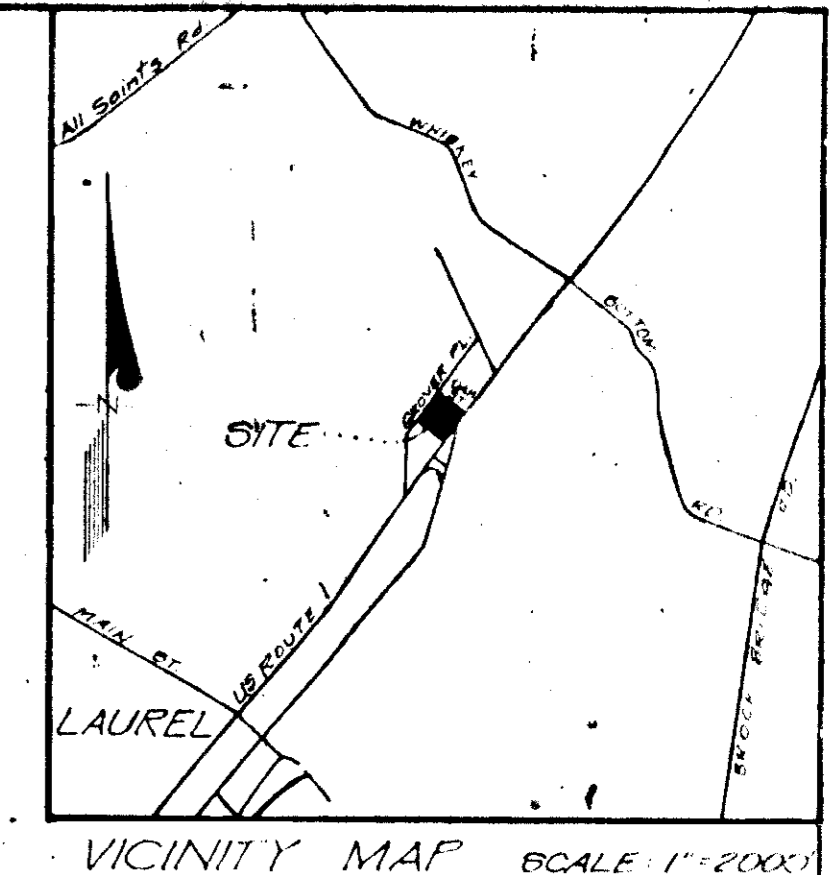
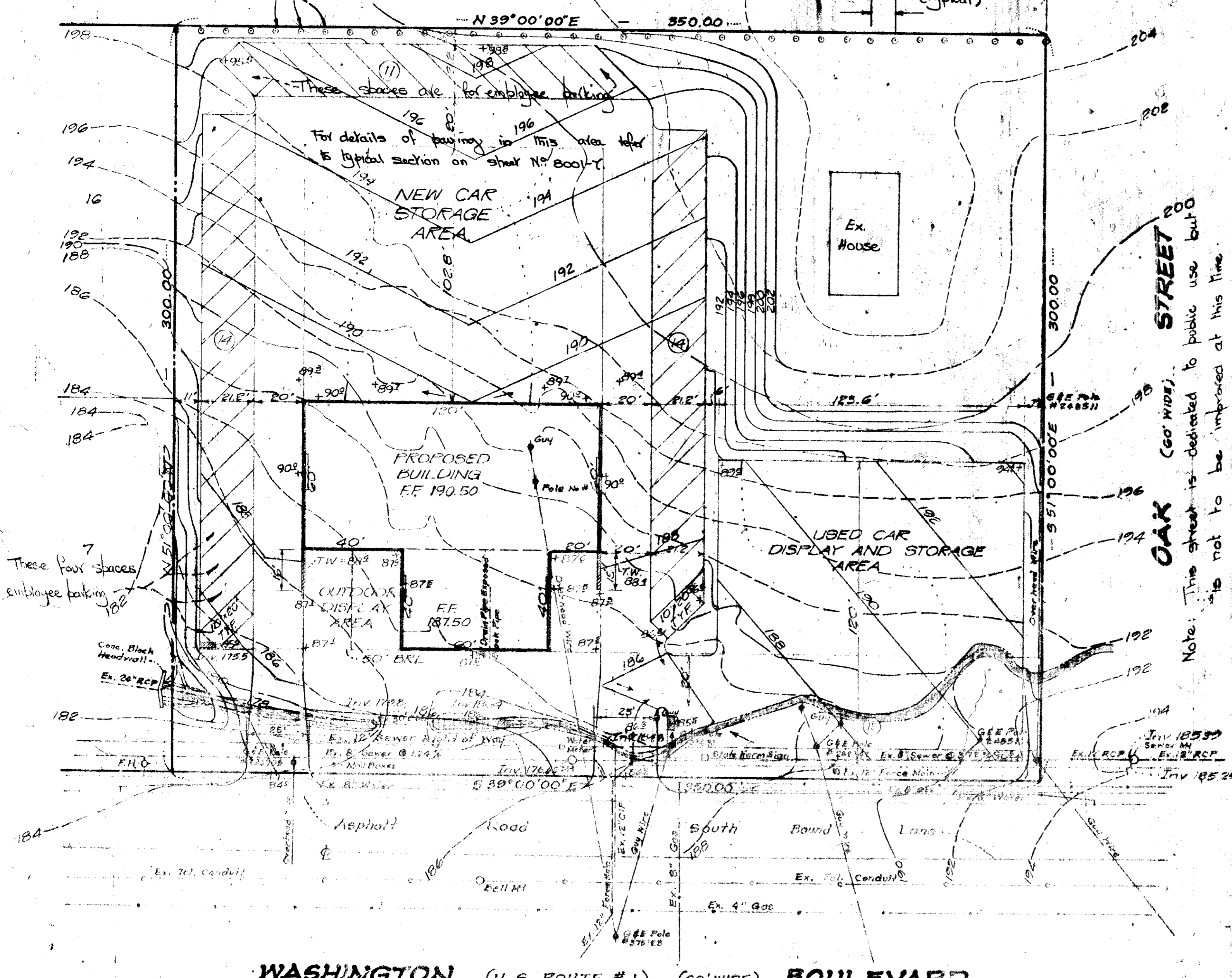
NOVEMBER 1973  
 SDP 74-52

**GROVER**

**PLACE**

Plant 6 high Canadian Hemlock (Thuja  
pandurica) 16' o.c. along property line.  
This street is dedicated to public use but is not  
improved at this time.

10' (typical)



**ZONED B-2**

USE:	Required	Permitted	Provided
Height: 40' Max.			20'
Area: No Min.		2.41 Ac.	105,000 S.F.
Front Yard: 50' Feet			50 Feet
Side Yard: None Required			75' Min.
Rear Yard: None Required			65' Min.
Coverage: BLDG. + Access BLDG. 50% Max.			65 Min.
			BLDG. = 9600 S.F. (9.1%)

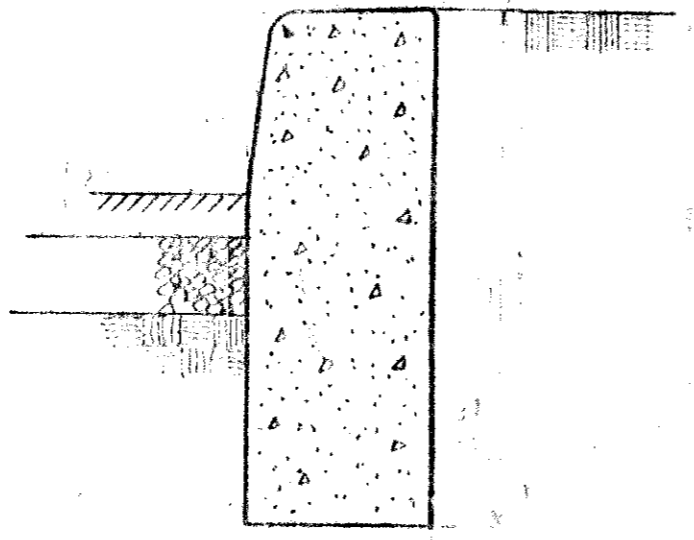
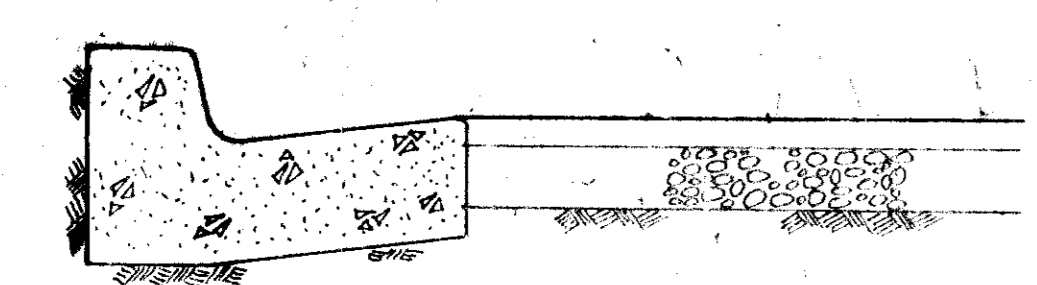
**Off-Street Parking:**

Aisle = 20'  
Space = Min. 200 S.F. Min. 9' wide  
Retail = 100 S.F. \* 2400 S.F. = 24 spaces  
Employees = 15 Spaces  
Total Required = Provided = 39 Spaces (10' x 20')

- NOTES:**
1. See Architectural Drawings for Retaining Wall details.
  2. For details of curb and gutter and paving see drawing number 8001-Y.

**WASHINGTON (U.S. ROUTE #1) (60' WIDE) BOULEVARD**

Note: For details of curb, curb & gutter and paving refer to drawing # 8001-Y



APPROVED FOR PUBLIC WATER AND PUBLIC/PRIVATE SEWERAGE SYSTEMS, HOWARD COUNTY HEALTH DEPARTMENT

*Jeffrey M.D.* 2/17/74  
COUNTY HEALTH OFFICER

*Thomas G. Horn* 3-5-74  
PLANNING AND ZONING OFFICER

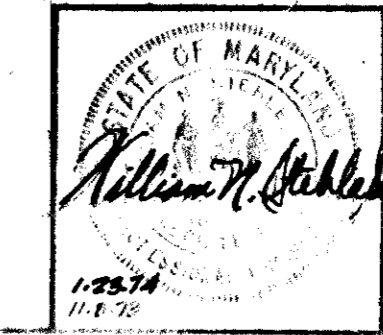
*J.H. Clawson* 3/16/74  
ENGINEER

WILLIAM A. WILKINSON  
DATE 2/16/74

**SITE PLAN**  
**LAUREL AMC/JEEP**  
LOTS 8-14 & 17-23, BLOCK 7  
**NORTH LAUREL PARK**  
6TH ELECTION DISTRICT  
HOWARD COUNTY, MARYLAND

Owner:  
Charles A. Swanson  
Eisinger Construction Co.  
11420 Rockville Pike  
Rockville, Maryland 20852  
861-7980

APPROVED  
DIVISION OF LAND DEVELOPMENT  
AND TRANSPORTATION PLANNING  
HOWARD COUNTY, MARYLAND  
DATE 1/22/74  
*J.H. Clawson*



REVISIONS		
DATE	DESCRIPTION	BY
1-22-74	CHANGING TO 60' WIDE	J.H.C.
1-22-74	CHANGING TO 60' WIDE	J.H.C.
1-22-74	CHANGING TO 60' WIDE	J.H.C.

4215 OPIENTERS ROAD, BETHESDA, MARYLAND 20814

**GEN DYER ASSOCIATES, INC.**  
LANDSCAPE ARCHITECTS AND PLANNERS  
TELEPHONE 729-8800

PROJECT NO. J-13084  
DATE: October 1973  
6004-Y

SDP 74-52