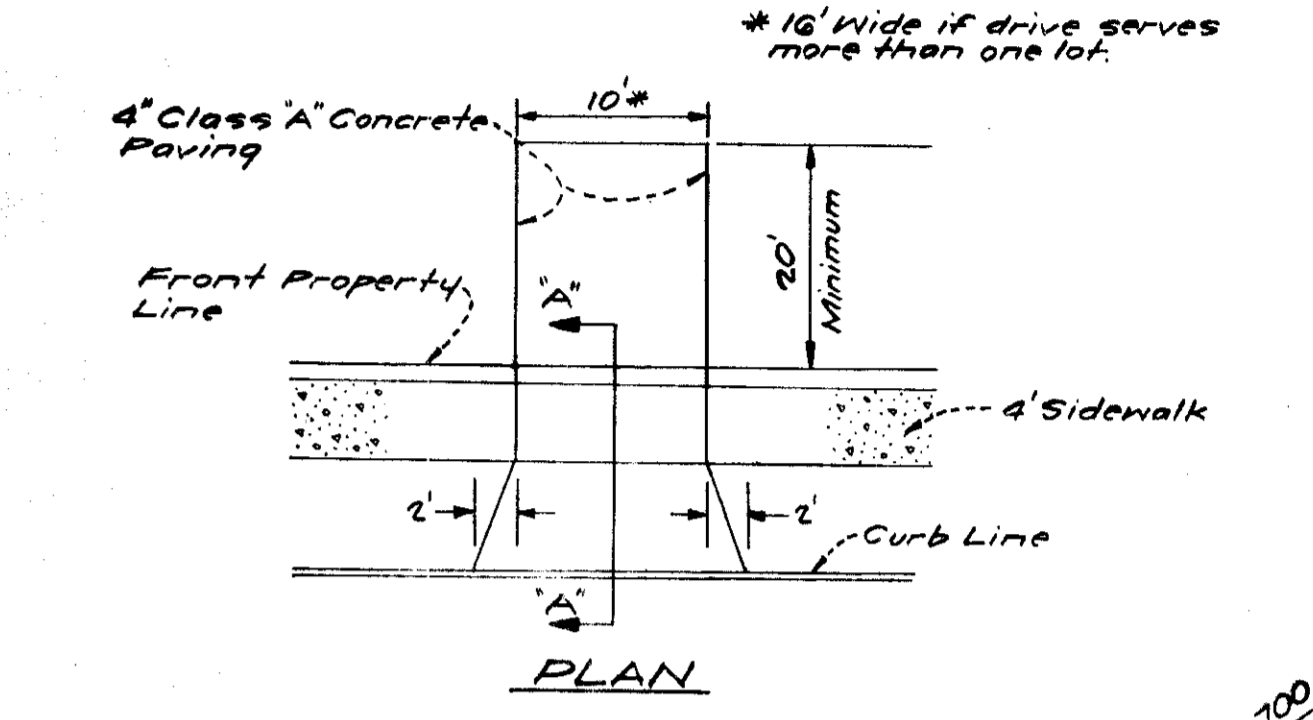
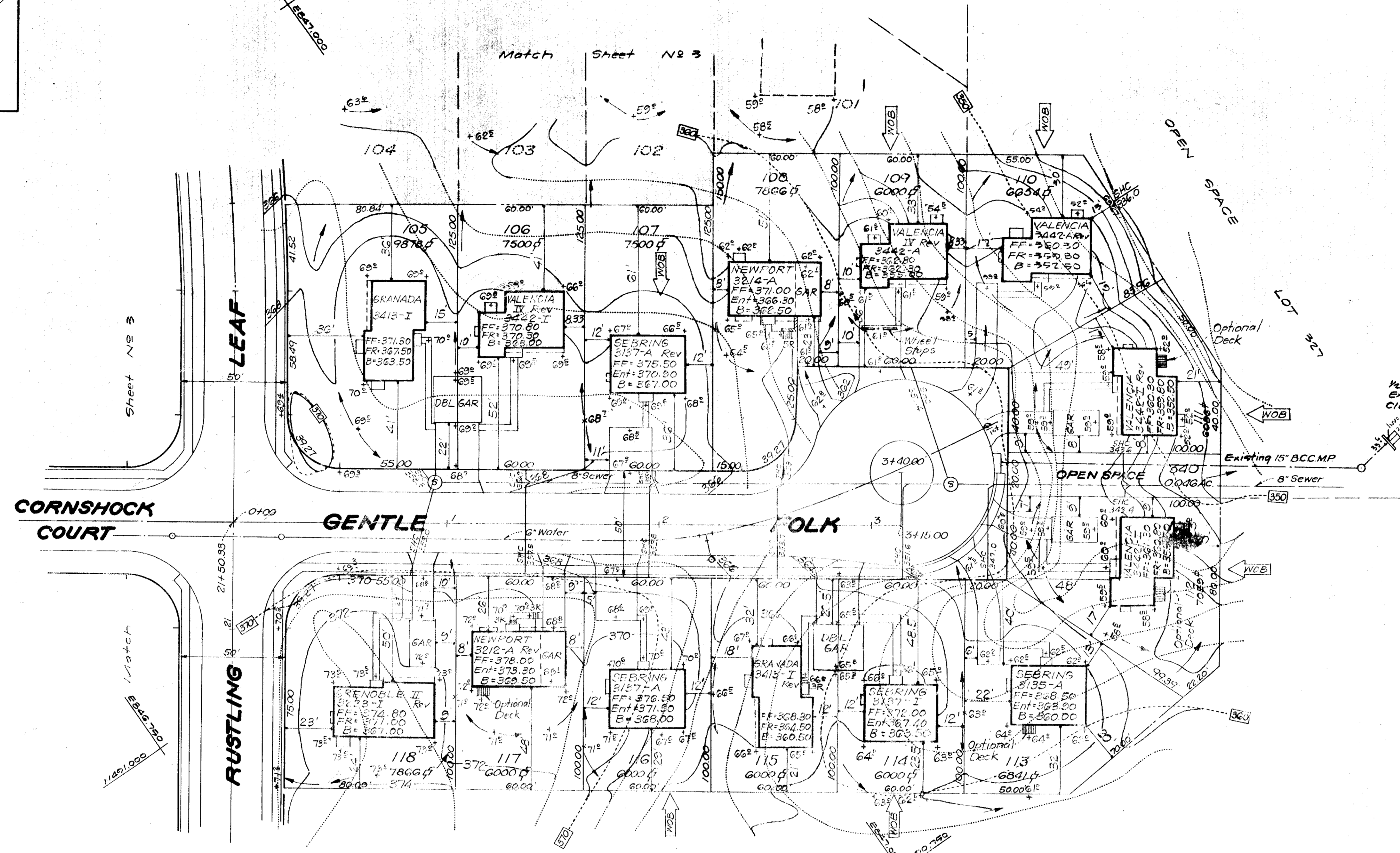


VICINITY MAP  
SCALE: 1" = 3000'

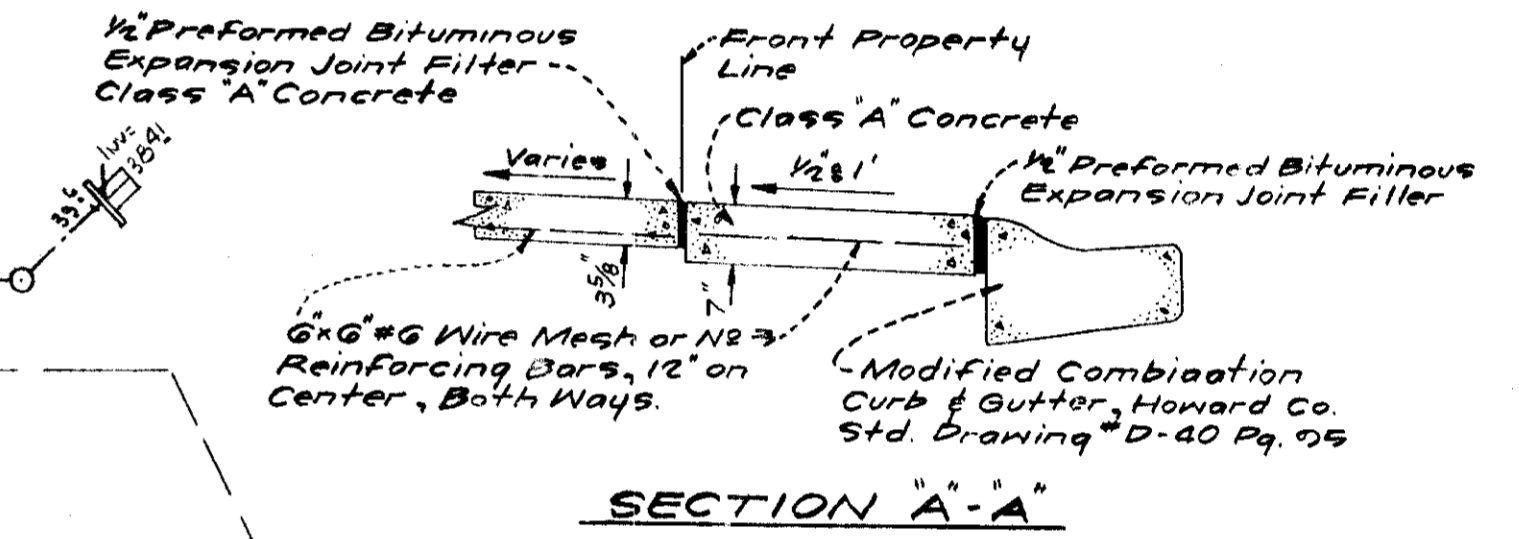
**LEGEND**

1. Contour Interval 2 FT.
2. Existing Contours  360
3. Proposed Contours  360
4. Spot Elevations +60.5
5. Direction Of Drainage
6. Retaining Wall
7. Yard Requirements:  
Front - 20' On 50' Wide Streets  
30' On 60' Wide Streets  
Side 7.5' (Min.)
8. Walk Out Basement  WOB

VILLAGE OF OWEN BROWN  
SECTION 2  
AREA 3



NOTE: Use Residential Driveway Entrance, Howard Co. Drug #P 33 Pg. 89, except Where Driveway Abuts Mod. Comb. Curb & Gutter.



SECTION A-A  
DRIVEWAY ABUTTING MOD. COMB. CURB & GUTTER

NO	REVISIONS	DATE
1	House & Grading on Lot 110 Revised	12-17-72

THE HOWARD RESEARCH AND DEVELOPMENT CORP.  
Liber 463 Folio 196

Feb. 9, 1974  
NOTE: For bearings and distances of individual lot lines, see record plat recorded in Plat Book 25 Folio 39

APPROVED FOR PUBLIC WATER AND PUBLIC SEWERAGE SYSTEMS, HOWARD COUNTY HEALTH DEPARTMENT  
*[Signature]* 2/27/74  
COUNTY HEALTH OFFICER DATE

APPROVED HOWARD COUNTY OFFICE OF PLANNING & ZONING  
*[Signature]* 3-1-74  
PLANNING DIRECTOR DATE

APPROVED FOR PUBLIC WATER AND PUBLIC SEWERAGE, STORM DRAINAGE SYSTEMS, AND PUBLIC ROADS, HOWARD COUNTY DEPARTMENT OF PUBLIC WORKS  
*[Signature]* 3/1/74  
SUPERVISOR DATE

APPROVED  
*[Signature]* 2/14/74  
CHIEF BUREAU OF HIGHWAYS DATE

**CLARK • FINEPROCK & SACKETT**  
ENGINEERS • PLANNERS • SURVEYORS  
11315 LOCKWOOD DRIVE SILVER SPRING, MARYLAND 20904 (301) 583-3400

DESIGNED WRMC  
DRAWN JM  
CHECKED WRMC  
DATE Aug. 1973

**DEVELOPMENT PLAN**  
LOTS 105 TO 118  
**COLUMBIA**  
VILLAGE OF OWEN BROWN  
SECTION 2 AREA 3  
6TH ELECTION DISTRICT HOWARD COUNTY, MARYLAND  
FOR: RYLAND HOMES, COLUMBIA DIVISION  
Suite 200 V.O.M. Office Building  
Columbia, Maryland 21043

SCALE 1" = 30'  
DRAWING 1 OF 6  
JOB NO.  
FILE NO. 1083-X

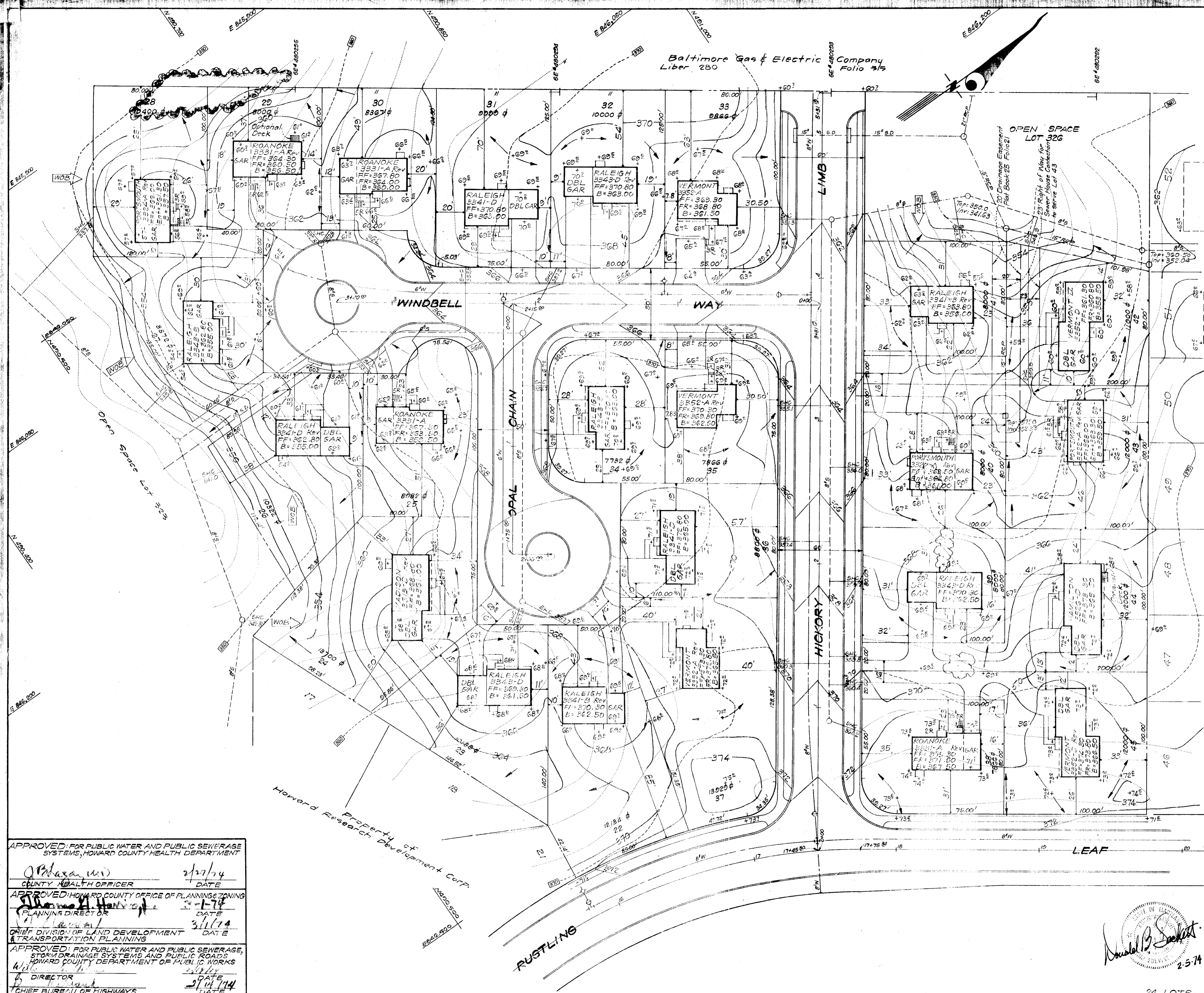
14 LOTS



SDP 74-40X

**LEGEND**

1. Contour Interval 2 Ft.
2. Existing Contours 360
3. Proposed Contours 360
4. Spot Elevations +60<sup>±</sup>
5. Direction Of Drainage
6. Retaining Wall
7. Yard Requirements:  
 Front - 20' On 50' Wide Streets  
 30' On 60' Wide Streets  
 Side 7.5' (Min.)
8. Walk Out Basement
9. Existing Trees To Be Retained



Match Sheet No. 3

2/4/74  
JHC

NOTE: For bearings and distances of individual lot lines, see record plat recorded in Plat Book 25 Folio 21

APPROVED FOR PUBLIC WATER AND PUBLIC SEWERAGE SYSTEMS, HOWARD COUNTY HEALTH DEPARTMENT

*[Signature]* 2/27/74  
COUNTY HEALTH OFFICER DATE

APPROVED: HOWARD COUNTY OFFICE OF PLANNING & ZONING

*[Signature]* 3/1/74  
PLANNING DIRECTOR DATE

CHIEF DIVISION OF LAND DEVELOPMENT & TRANSPORTATION PLANNING

APPROVED: FOR PUBLIC WATER AND PUBLIC SEWERAGE, STORM DRAINAGE SYSTEMS AND PUBLIC ROADS, HOWARD COUNTY DEPARTMENT OF PUBLIC WORKS

*[Signature]* 2/14/74  
DIRECTOR DATE

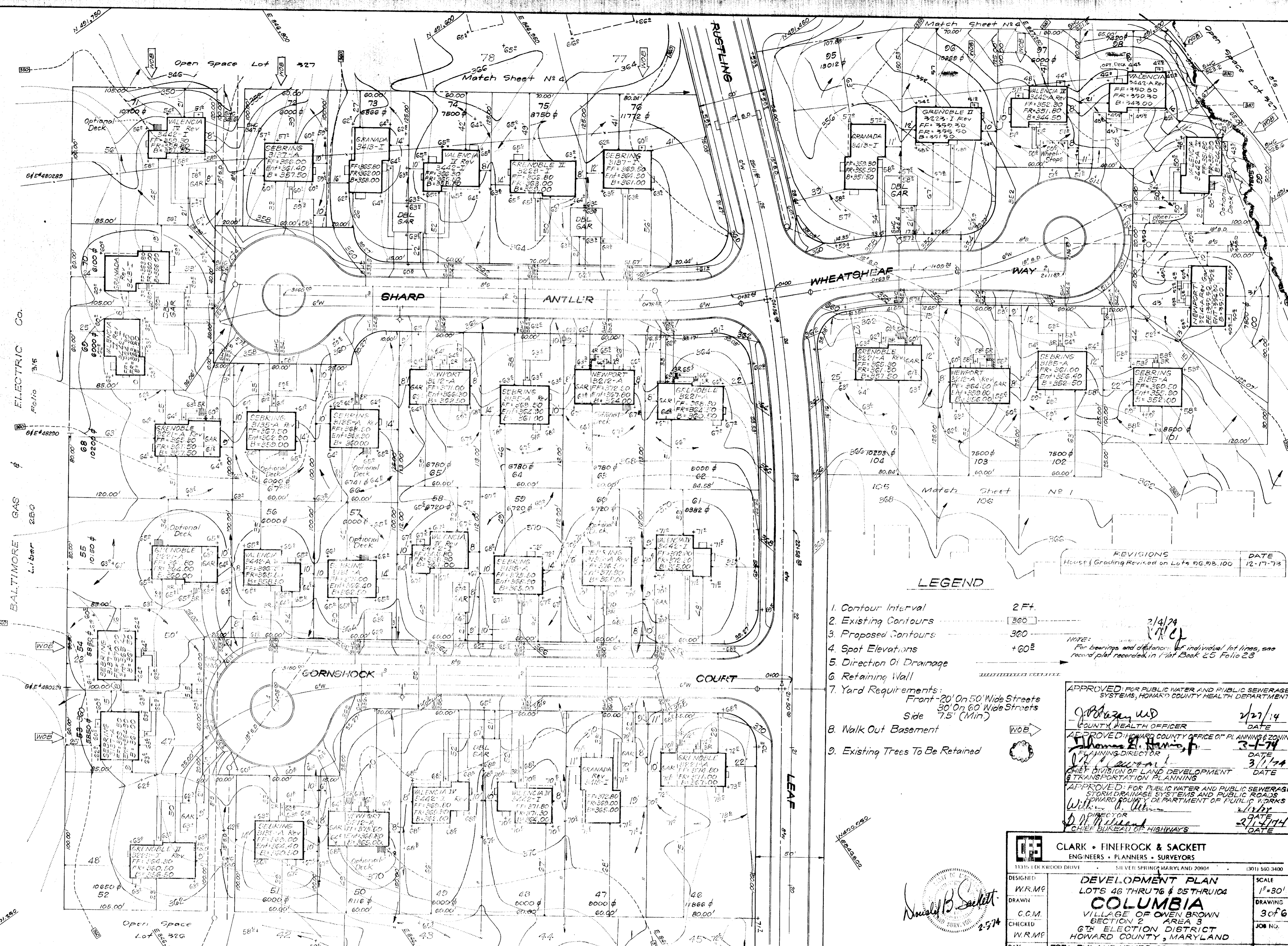
CHIEF BUREAU OF HIGHWAYS

	<b>CLARK • FINEPROCK &amp; SACKETT</b> ENGINEERS • PLANNERS • SURVEYORS	
	11315 LOCKWOOD DRIVE SILVER SPRING, MARYLAND 20904	(301) 693-3400
DESIGNED W.R.M.P.	<b>DEVELOPMENT PLAN</b> LOTS 22 THRU 45 <b>COLUMBIA</b> VILLAGE OF OWEN BROWN SECTION 2 AREA B 6TH ELECTION DISTRICT HOWARD COUNTY, MARYLAND	
DRAWN C.C.M.	FOR: RYLAND HOMES, COLUMBIA DIVISION SUITE 200 V.O.M. OFFICE BUILDING Columbia, Maryland 21045	
CHECKED W.R.M.P.	SCALE 1"=30'	
DATE JULY, 1973	DRAWING 2 OF 6	
	JOB NO. 1083-X	
	FILE NO. 1083-X	

24 LOTS

*[Signature]* 2-5-74

SDP74-400



REVISIONS	DATE
House & Grading Revised on Lots 96, 98, 100	12-17-73

**LEGEND**

1. Contour Interval 2 Ft.
2. Existing Contours 360
3. Proposed Contours 360
4. Spot Elevations +60<sup>±</sup>
5. Direction Of Drainage
6. Retaining Wall
7. Yard Requirements:  
Front - 20' On 50' Wide Streets  
Side 7.5' (Min)
8. Walk Out Basement
9. Existing Trees To Be Retained

NOTE: For bearings and distances of individual lot lines, see record plat recorded in Plat Book 25 Folio 23

APPROVED FOR PUBLIC WATER AND PUBLIC SEWERAGE SYSTEMS, HOWARD COUNTY HEALTH DEPARTMENT

*J. P. ...* 2/27/14  
COUNTY HEALTH OFFICER DATE

APPROVED HOWARD COUNTY OFFICE OF PLANNING & ZONING

*Thomas E. ...* 3-1-74  
PLANNING DIRECTOR DATE

*...* 3/1/74  
CHIEF DIVISION OF LAND DEVELOPMENT & TRANSPORTATION PLANNING DATE

APPROVED FOR PUBLIC WATER AND PUBLIC SEWERAGE, STORM DRAINAGE SYSTEMS AND PUBLIC ROADS

*Will ...* 2/18/74  
DIRECTOR DATE

*D. W. ...* 2/27/74  
CHIEF BUREAU OF HIGHWAYS DATE

**CLARK • FINFROCK & SACKETT**  
ENGINEERS • PLANNERS • SURVEYORS

11315 LICKWOOD DRIVE SILVER SPRING, MARYLAND 20904 (301) 593-3400

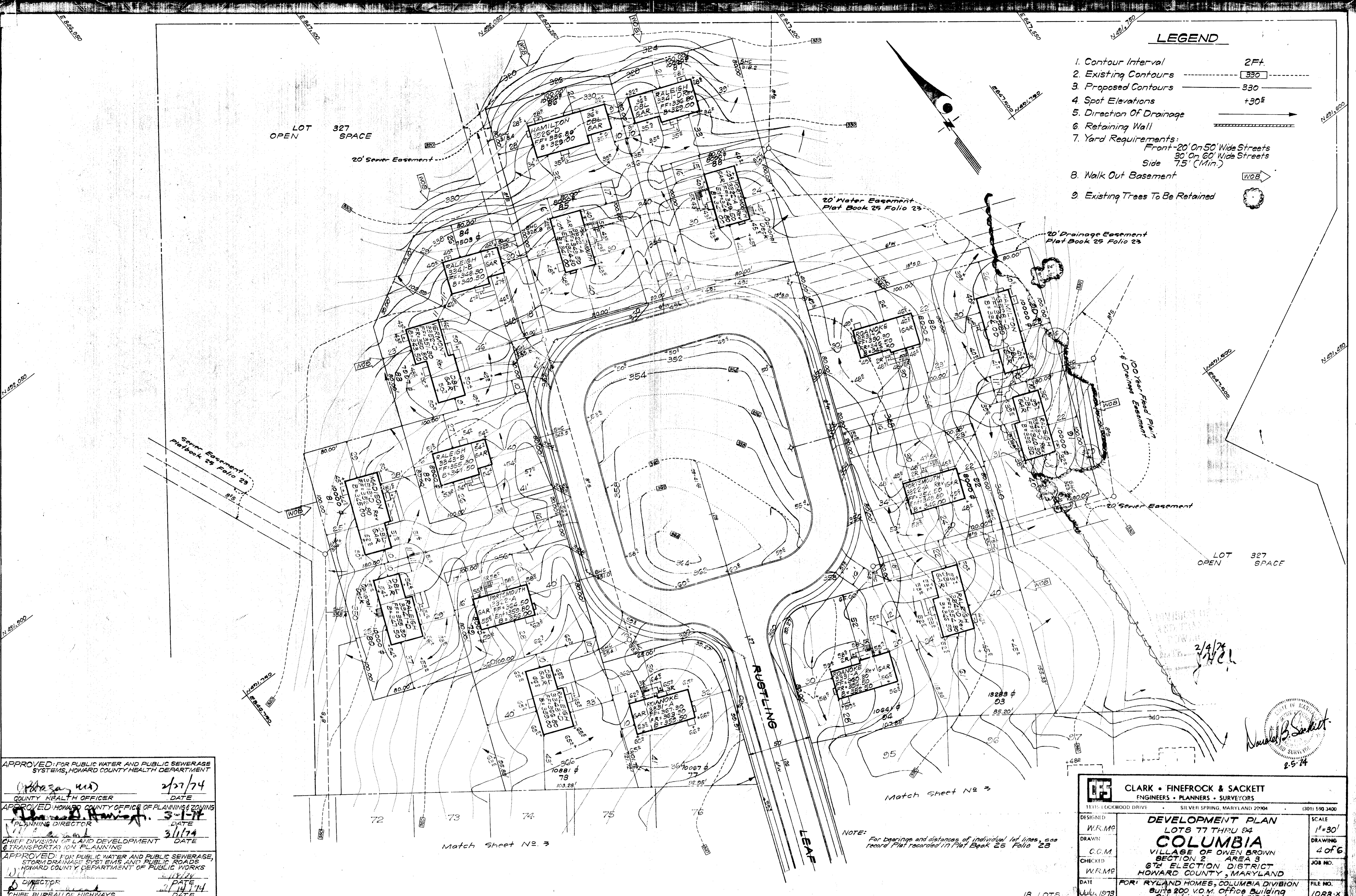
DESIGNED BY	DEVELOPMENT PLAN	SCALE
W.R.M.P.	LOTS 46 THRU 76 & 25 THRU 104	1" = 30'
DRAWN BY	<b>COLUMBIA</b>	DRAWING
C.C.M.	VILLAGE OF OWEN BROWN	3 OF 6
CHECKED BY	SECTION 2 - AREA 3	JOB NO.
W.R.M.S.	6TH ELECTION DISTRICT	
DATE	HOWARD COUNTY, MARYLAND	FILE NO.
July, 1973	FOR: RYLAND HOMES, COLUMBIA DIVISION	1223-X
	Suite 200 V.O.M. Office Building	SDR 74-40
	Columbia, Maryland 21045	

*Donald B. Sackett*  
2-5-74

41 LOTS

**LEGEND**

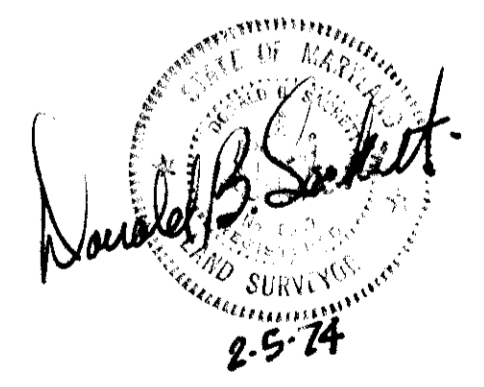
1. Contour Interval 2 Ft.
2. Existing Contours 330
3. Proposed Contours 330
4. Spot Elevations +30±
5. Direction Of Drainage
6. Retaining Wall
7. Yard Requirements:  
Front - 20' On 50' Wide Streets  
30' On 60' Wide Streets  
Side 7.5' (Min.)
8. Walk Out Basement
9. Existing Trees To Be Retained



APPROVED FOR PUBLIC WATER AND PUBLIC SEWERAGE SYSTEMS, HOWARD COUNTY HEALTH DEPARTMENT  
 COUNTY HEALTH OFFICER *[Signature]* DATE 2/27/74  
 APPROVED HOWARD COUNTY OFFICE OF PLANNING & ZONING  
 PLANNING DIRECTOR *[Signature]* DATE 3-1-74  
 CHIEF DIVISION OF LAND DEVELOPMENT & TRANSPORTATION PLANNING  
 CHIEF DIVISION OF LAND DEVELOPMENT & TRANSPORTATION PLANNING  
 APPROVED FOR PUBLIC WATER AND PUBLIC SEWERAGE, STORM DRAINAGE SYSTEMS AND PUBLIC ROADS, HOWARD COUNTY DEPARTMENT OF PUBLIC WORKS  
 DIRECTOR *[Signature]* DATE 2/14/74  
 CHIEF BUREAU OF HIGHWAYS

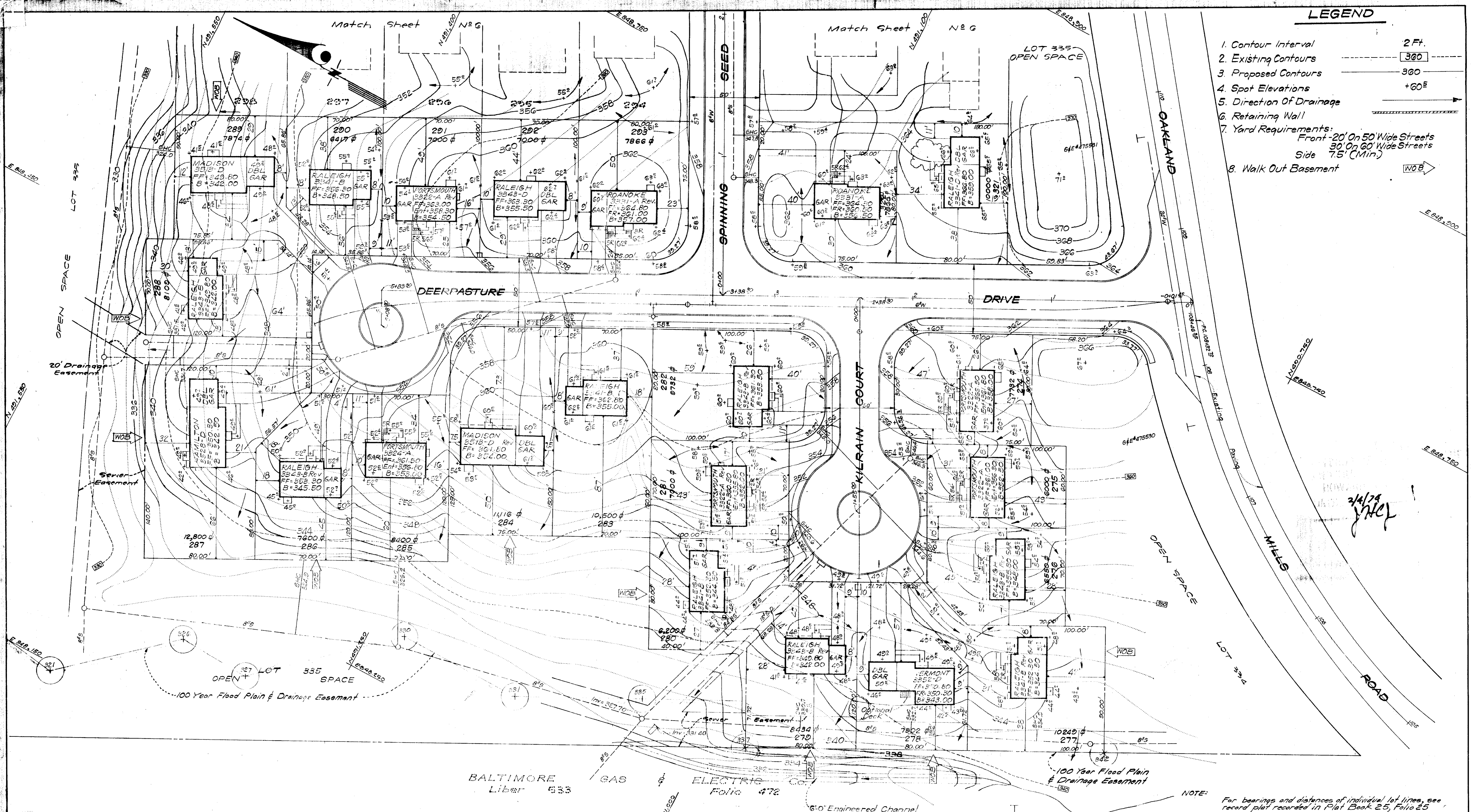
NOTE: For bearings and distances of individual lot lines, see record Plat recorded in Plat Book 25 Folio 23

<b>CLARK • FINEFROCK &amp; SACKETT</b> ENGINEERS • PLANNERS • SURVEYORS		SCALE 1"=30'
DESIGNED W.R.M.	<b>DEVELOPMENT PLAN</b> LOTS 77 THRU 84	
DRAWN C.O.M.	<b>COLUMBIA</b>	
CHECKED W.R.M.	VILLAGE OF OWEN BROWN SECTION 2 AREA 3 8TH ELECTION DISTRICT HOWARD COUNTY, MARYLAND	
DATE July, 1973	FOR: RYLAND HOMES, COLUMBIA DIVISION Bldg 200 V.O.M. Office Building Columbia, Maryland 21045	JOB NO. 1088-X



**LEGEND**

- 1. Contour Interval 2 Ft.
- 2. Existing Contours 360
- 3. Proposed Contours 360
- 4. Spot Elevations +60<sup>E</sup>
- 5. Direction Of Drainage →
- 6. Retaining Wall [Symbol]
- 7. Yard Requirements:  
 Front - 20' On 50' Wide Streets  
 30' On 60' Wide Streets  
 Side 7.5' (Min.)
- 8. Walk Out Basement [Symbol]



APPROVED: FOR PUBLIC WATER AND PUBLIC SEWERAGE SYSTEMS, HOWARD COUNTY HEALTH DEPARTMENT  
 COUNTY HEALTH OFFICER [Signature] DATE 2/27/74  
 APPROVED: HOWARD COUNTY OFFICE OF PLANNING & ZONING  
 PLANNING DIRECTOR [Signature] DATE 3-1-74  
 CHIEF DIVISION OF LAND DEVELOPMENT & TRANSPORTATION PLANNING  
 DATE 2/11/74  
 APPROVED: FOR PUBLIC WATER AND PUBLIC SEWERAGE, STORM DRAINAGE SYSTEMS AND PUBLIC ROADS, HOWARD COUNTY DEPARTMENT OF PUBLIC WORKS  
 DIRECTOR [Signature] DATE 2/17/74  
 CHIEF BUREAU OF HIGHWAYS DATE

NOTE: For bearings and distances of individual lot lines, see record plat recorded in Plat Book 25, Folio 25

<b>CLARK • FINEFROCK &amp; SACKETT</b> ENGINEERS • PLANNERS • SURVEYORS		11315 LOCKWOOD DRIVE SILVER SPRING, MARYLAND 20904 (301) 593 3400
DESIGNED W.R.M.P.	<b>DEVELOPMENT PLAN</b> LOTS 274 THRU 295, 321 & 322	SCALE 1"=30'
DRAWN C.C.M.	<b>COLUMBIA</b> VILLAGE OF OWEN BROWN SECTION 2	DRAWING 5 OF 6
CHECKED W.R.M.P.	6TH ELECTION DISTRICT HOWARD COUNTY, MARYLAND	JOB NO.
DATE July, 1973	FOR: RYLAND HOMES, COLUMBIA DIVISION Suite 200 W.O.M. Office Building Columbia, Maryland 21045	FILE NO. 1085 X

22 LOTS  
2-5-74  
[Seal]

**LEGEND**

1. Contour Interval 2 FT.
2. Existing Contours 360
3. Proposed Contours 360
4. Spot Elevations +60±
5. Direction Of Drainage
6. Retaining Wall
7. Yard Requirements:  
Front-20' On 50' Wide Streets  
30' On 60' Wide Streets  
Side 7.5' (Min.)
8. Walk Out Basement



2/4/74  
W.C.L.

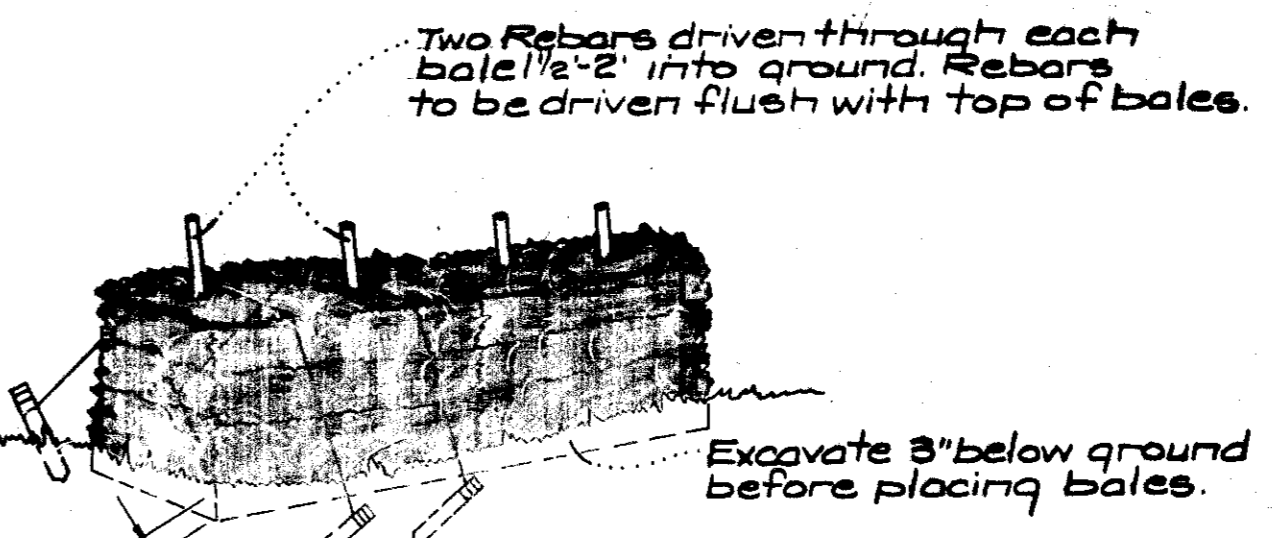
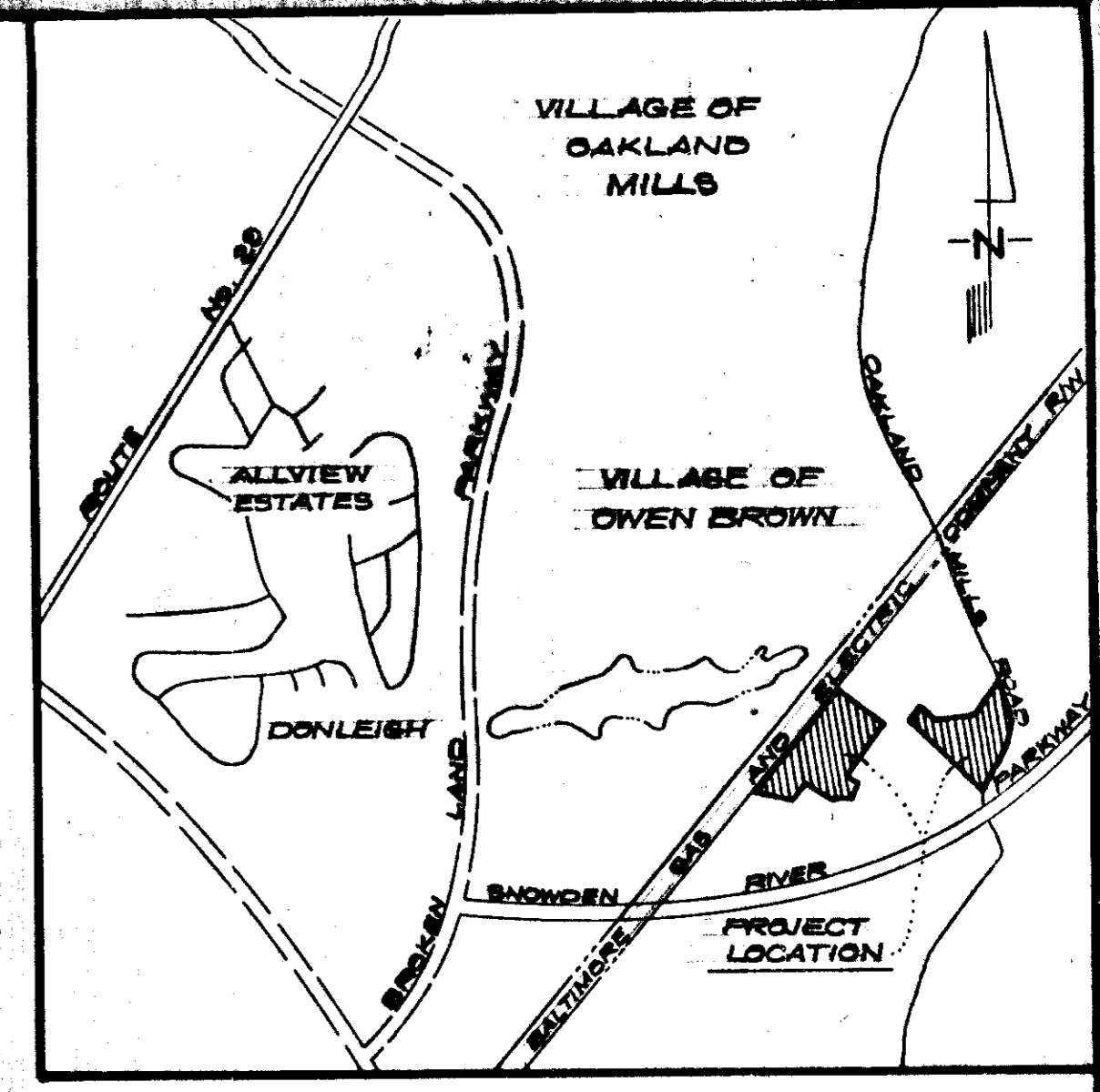


NOTE: For bearings and distances of individual lot lines, see record Plat recorded in Plat Book 25 Page 25

APPROVED: FOR PUBLIC WATER AND PUBLIC SEWERAGE SYSTEMS, HOWARD COUNTY HEALTH DEPARTMENT  
 COUNTY HEALTH OFFICER *[Signature]* DATE 2/27/74  
 APPROVED: HOWARD COUNTY OFFICE OF PLANNING & ZONING  
 PLANNING DIRECTOR *[Signature]* DATE 3-1-74  
 CHIEF DIVISION OF LAND DEVELOPMENT AND TRANSPORTATION PLANNING  
 CHIEF *[Signature]* DATE 3/11/74  
 APPROVED: FOR PUBLIC WATER AND PUBLIC SEWERAGE STORM DRAINAGE SYSTEMS AND PUBLIC ROADS, HOWARD COUNTY DEPARTMENT OF PUBLIC WORKS  
 DIRECTOR *[Signature]* DATE 2/19/74  
 CHIEF BUREAU OF HIGHWAYS *[Signature]* DATE 2/17/74

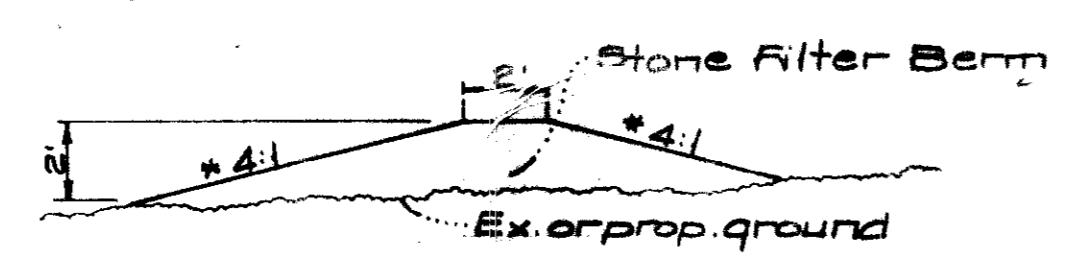
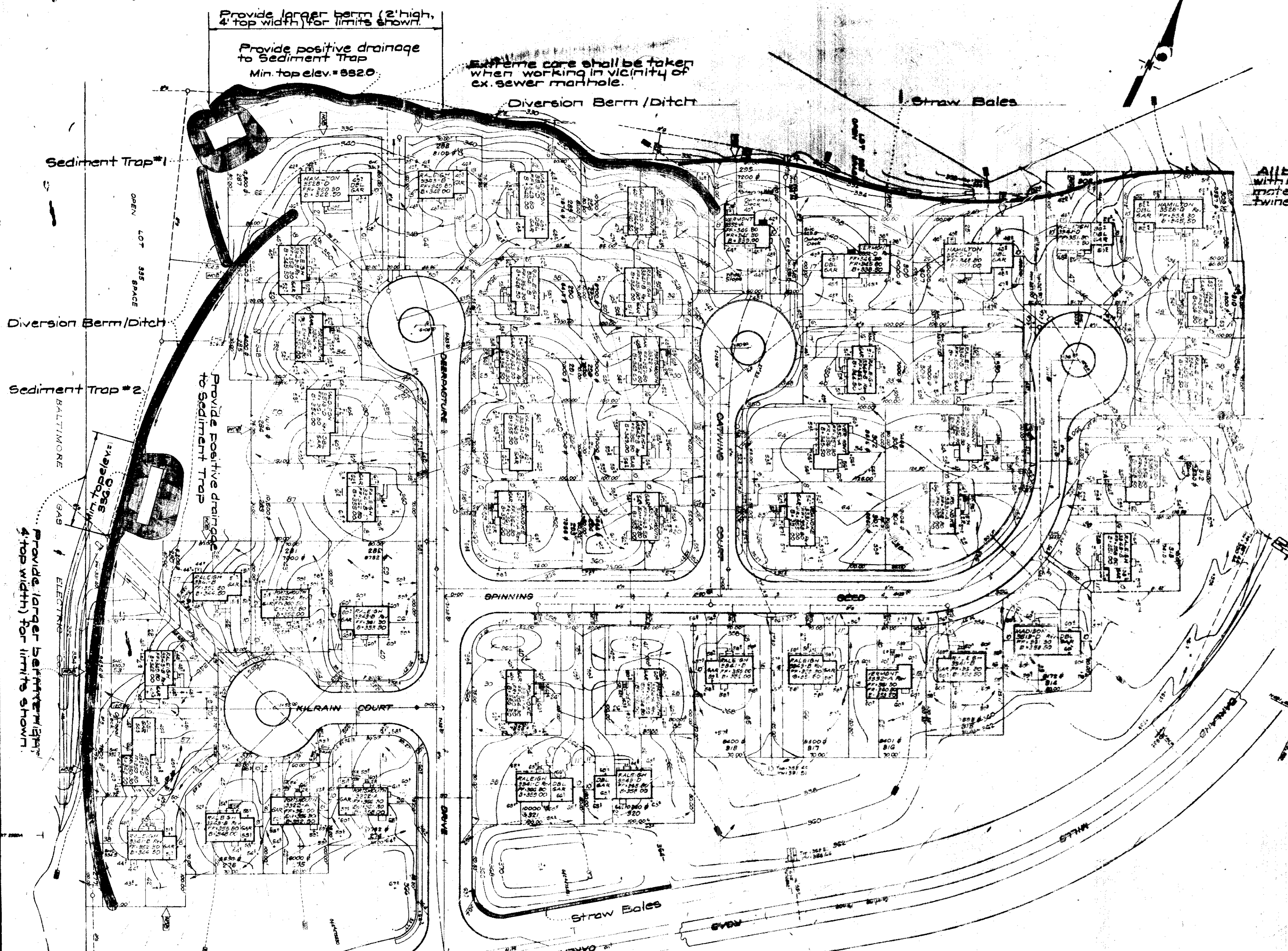
<b>CLARK • FINEPROCK &amp; SACKETT</b> ENGINEERS • PLANNERS • SURVEYORS 11110 LOCKWOOD DRIVE SILVER SPRING, MARYLAND 20904 (301) 593-3000		SCALE 1" = 30' DRAWING G of G JOB NO. SHEET NO. 1053 X
DESIGNED W.R.M.P. DRAWN C.C.M. CHECKED W.R.M.P. DATE July, 1973	<b>DEVELOPMENT PLAN</b> LOTS 294 THRU 320 <b>COLUMBIA</b> VILLAGE OF OWEN BROWN SECTION 2, AREA 3 6 <sup>th</sup> ELECTION DISTRICT HOWARD COUNTY, MARYLAND FOR: RYLAND HOMES, COLUMBIA DIVISION SUITE 200 V.O.M. OFFICE Building Columbia, Maryland 21048	

APPROVED FOR PUBLIC WATER AND PUBLIC SEWERAGE,  
STORM DRAINAGE SYSTEMS AND PUBLIC ROADS  
HOWARD COUNTY DEPARTMENT OF PUBLIC WORKS  
Director: *William H. Wilson* DATE: 2/19/74  
DATE: 2-14-74  
CHIEF BUREAU OF HIGHWAYS



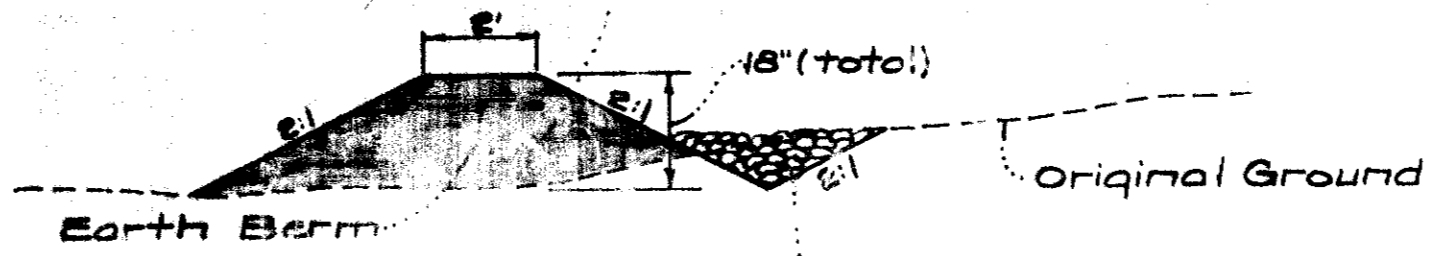
All bales shall be tied with non-weathering material, i.e. wire, nylon, twine, etc.

NOTE: In lieu of the use of rebar each straw bale, may be fastened to ground with pegs (4 per bale & nylon twine as shown above)



\* Slopes to be flat enough to accommodate construction vehicles without damaging berm.  
NOTE: Stone shall be 4" to 6" Surge Stone.

STONE FILTER BERM DETAIL  
No Scale



NOTE: Ditch to be used in conjunction with berm only where needed to provide positive drainage to Sediment Basins/Traps

Use Md. No. 2 Stone for full width of all construction entrances in lieu of earth berms where shown on plans. Slopes to be flat enough to accommodate construction vehicles.

Md. No. 2 Stone to be placed in ditch to level of original ground, for full width of all construction entrances.

GENERAL NOTES

- All Sediment and Erosion Control Measures will be installed and stabilized according to this plan prior to any other grading, clearing, or disturbance of the existing surface of the site.
- Notify the Howard Soil Conservation District at least 24 hours before starting any work.
- All Sediment Control Practices to conform to the Standards and Specifications for Soil Erosion and Sediment Control in Urbanizing Areas and shall be adjusted to meet actual field conditions.
- Stabilization of disturbed ground to be done as soon after construction as possible.
- Stone filter berms shall be used at construction entrances to lots in lieu of straw bales where shown on plans.
- All graded areas shall be treated in accordance with the following specifications:
  - Seed-certified 85% germination applied at the rate of 3 lbs./1000 sq. ft.; mixture - 40% Kentucky Blue, 20% Chewung Fescue, 20% Kentucky 31, and 20% Annual Ry.
  - Fertilizer - 5-10-10 applied at the rate of 25 lbs./1000 sq. ft. and ground agricultural lime or dolomitic lime applied at the rate of 40 lbs./1000 sq. ft.
  - Mulch - Weed free grain straw applied at the rate of 70 lbs./1000 sq. ft. Mulch shall be secured to the ground by any approved method, i.e. asphalt tacks, chemical binder, wood chips, etc.
- All structural sediment control measures are to remain in place until permission for their removal has been obtained from the Howard Soil Conservation District, phone 465-8180 or 465-5000, ext. 828.
- All ex. storm drain inlets, to be sand bag shut until all areas draining to the inlets are stabilized. All trapped sediment shall be removed from paved areas and placed in a suitable location upstream of Sediment Control Facilities.
- Onsite inspection and maintenance of all sediment control measures, including cleanout of sediment traps and berms, and proper establishment of all planned vegetative measures will be the responsibility of the Developer or his representative on the site, on a continuing day to day basis.
- Protection of stabilized lots from sediment runoff shall be provided by the use of an approved sediment control device, i.e. stone filter berms, straw bales, etc.
- See sht. 3 for location of ex. Sediment Basins in area of this construction.

Reviewed for: Howard S.C.D.  
Signature: *David M. Hahn* Date: 2-8-74  
Signature: \_\_\_\_\_ Date: \_\_\_\_\_  
U.S. Soil Conservation Service

THIS DEVELOPMENT PLAN IS APPROVED FOR SOIL EROSION AND SEDIMENT CONTROL BY THE HOWARD SOIL CONSERVATION DISTRICT.

Approved: *Robert W. Zimm* Date: 2-8-74

DEVELOPER'S CERTIFICATE  
I certify that all development and/or construction will be done in accordance with the plan and specifications shown on this plan and that I am also providing for the installation of the Howard Soil Conservation District's sediment control devices as are shown on this plan. If any changes to this plan will not be made unless authorized by the Howard Soil Conservation District.

1-22-74 Date: *Anna S. Stalder* Signature

ENGINEER'S CERTIFICATE  
I hereby certify that this plan for Erosion and Sediment Control is a true and correct and workable plan based on my personal knowledge of the site conditions and that it was prepared in accordance with the requirements of the Howard Soil Conservation District.

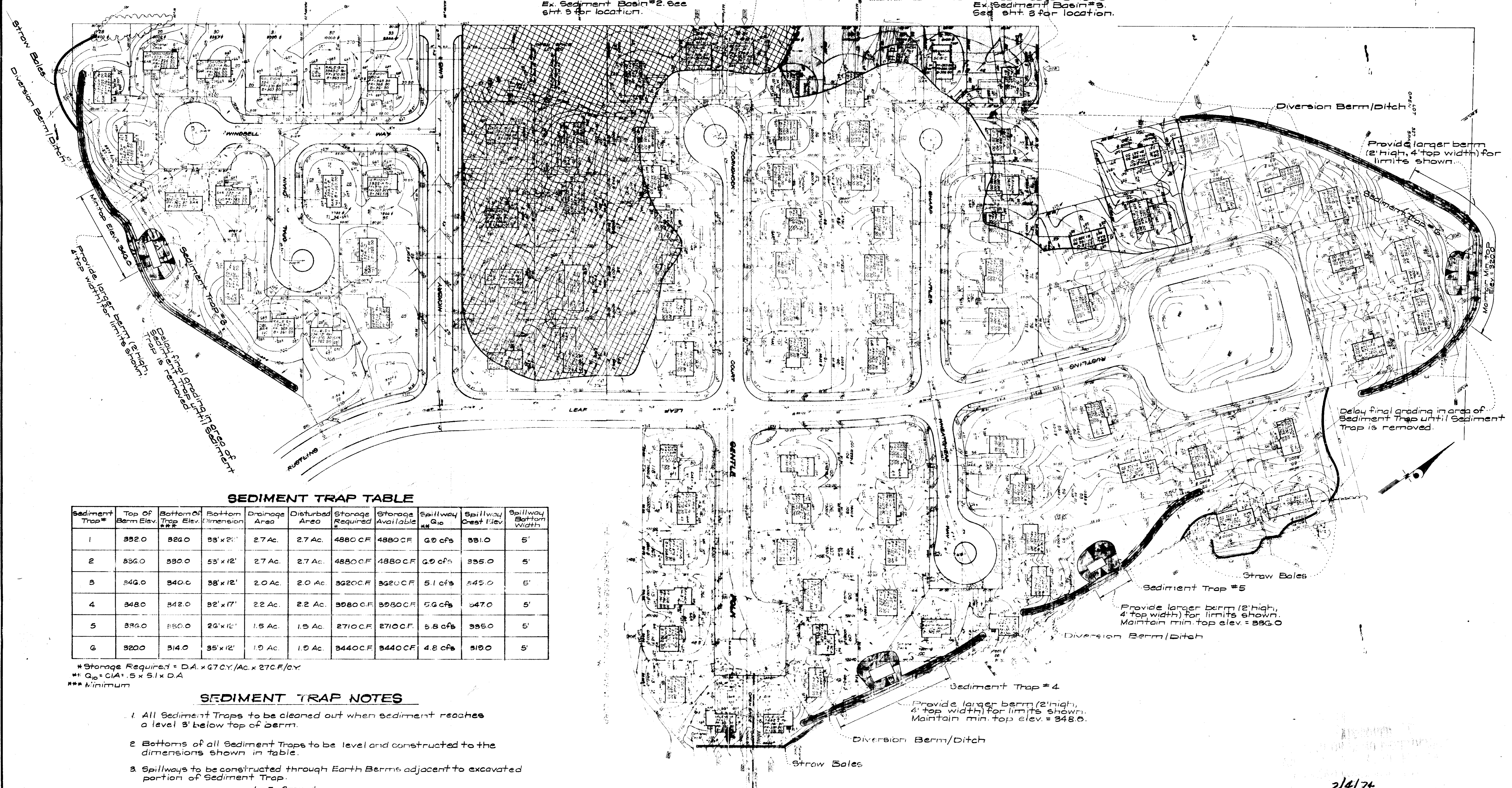
1-18-74 Date: *G. Nelson Clark* Signature



<b>CLARK • FINEROCK &amp; SACKETT</b> ENGINEERS • PLANNERS • SURVEYORS 11315 LOCKWOOD DRIVE SILVER SPRING, MARYLAND 20904 (301) 593-3400		
DESIGNED R.J.G.	<b>BEDMENT &amp; EROSION CONTROL PLAN</b> LOTS 274 THRU 522 <b>COLUMBIA</b> VILLAGE OF OWEN BROWN SECTION 2 AREA B 4TH ELECTION DISTRICT HOWARD COUNTY, MARYLAND	SCALE As Shown DRAWING 10F3
DRAWN		JOB NO.
SUZAN CHECKED		FILE NO.
G.N.C.		FOR: RYLAND HOMES COLUMBIA DIVISION SUITE 200 V.O.M. OFFICE Bldg. Columbia, Md. 21043
DATE Jan., 1974		

Note: Cross hatched area drains to Ex. Sediment Basin #2. See Sht. 3 for location.

Note: Shaded area drains to Ex. Sediment Basin #3. See Sht. 3 for location.



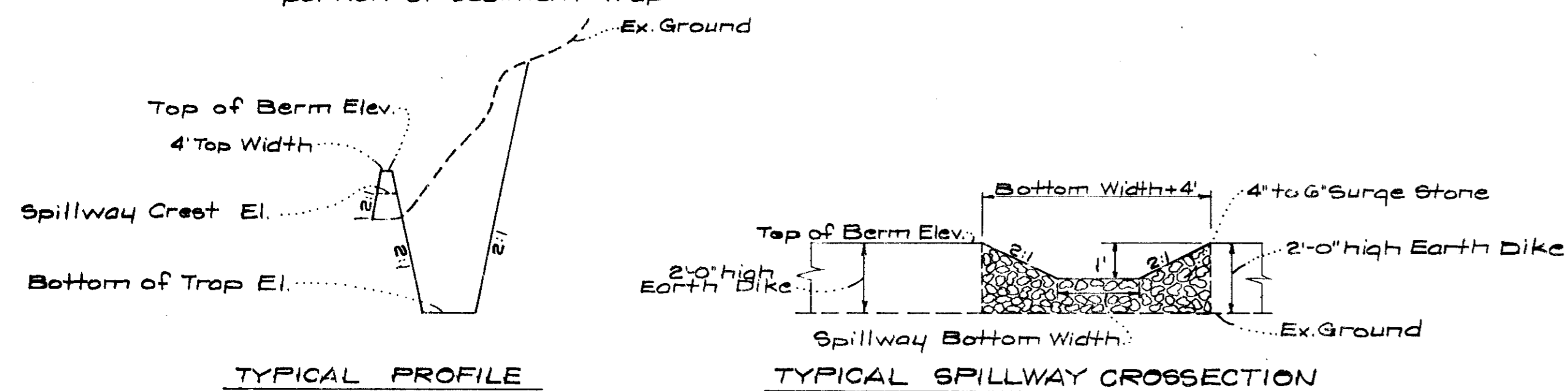
**SEDIMENT TRAP TABLE**

Sediment Trap #	Top Of Berm Elev.	Bottom Of Trap Elev.	Bottom Dimension	Drainage Area	Disturbed Area	Storage Required	Storage Available	Spillway Q <sub>10</sub>	Spillway Crest Elev.	Spillway Bottom Width
1	332.0	326.0	23' x 20'	2.7 Ac.	2.7 Ac.	4880 C.F.	4880 C.F.	6.0 cfs	331.0	5'
2	336.0	330.0	53' x 12'	2.7 Ac.	2.7 Ac.	4880 C.F.	4880 C.F.	6.0 cfs	335.0	5'
3	346.0	340.0	38' x 12'	2.0 Ac.	2.0 Ac.	3620 C.F.	3620 C.F.	5.1 cfs	345.0	5'
4	348.0	342.0	32' x 17'	2.2 Ac.	2.2 Ac.	3080 C.F.	3080 C.F.	5.6 cfs	347.0	5'
5	336.0	330.0	26' x 12'	1.5 Ac.	1.5 Ac.	2710 C.F.	2710 C.F.	3.8 cfs	335.0	5'
6	320.0	314.0	35' x 12'	1.0 Ac.	1.0 Ac.	3440 C.F.	3440 C.F.	4.8 cfs	310.0	5'

\* Storage Required = D.A. x 70% / Ac. x 270 C.F./Ac.  
 \*\* Q<sub>10</sub> = CIA<sup>0.5</sup> x S<sup>1</sup> x D.A.  
 \*\*\* Minimum

**SEDIMENT TRAP NOTES**

- All Sediment Traps to be cleaned out when sediment reaches a level 3' below top of berm.
- Bottoms of all Sediment Traps to be level and constructed to the dimensions shown in table.
- Spillways to be constructed through Earth Berms adjacent to excavated portion of Sediment Trap.



**SEDIMENT TRAP DETAILS**

No Scale

PLAN  
Scale: 1" = 60'



G. Nelson Clark  
1-18-74

<b>CLARK • FINEFROCK &amp; SACKETT</b> ENGINEERS • PLANNERS • SURVEYORS 11315 LOCKWOOD DRIVE • SILVER SPRING, MARYLAND 20904 • (301) 593-3400		SCALE As Shown DRAWING 20F 3 JOB NO. FILE NO. 1118-0E
DESIGNED R.J.S. DRAWN G.U.Z. CHECKED G.N.C. DATE Jan., 1974	<b>SEDIMENT EROSION CONTROL PLAN</b> LOTS 22 THRU 118 <b>COLUMBIA</b> VILLAGE OF OWEN BROWN, SECTION 2 AREA B 6TH ELECTION DISTRICT HOWARD COUNTY, MARYLAND FOR: RYLAND HOMES COLUMBIA DIVISION Suite 200 V.O.M. Office Bldg. Columbia, Md. 21048	



THE HOWARD RESEARCH AND  
DEVELOPMENT CORPORATION

SEDIMENT BASIN N<sup>o</sup> 1

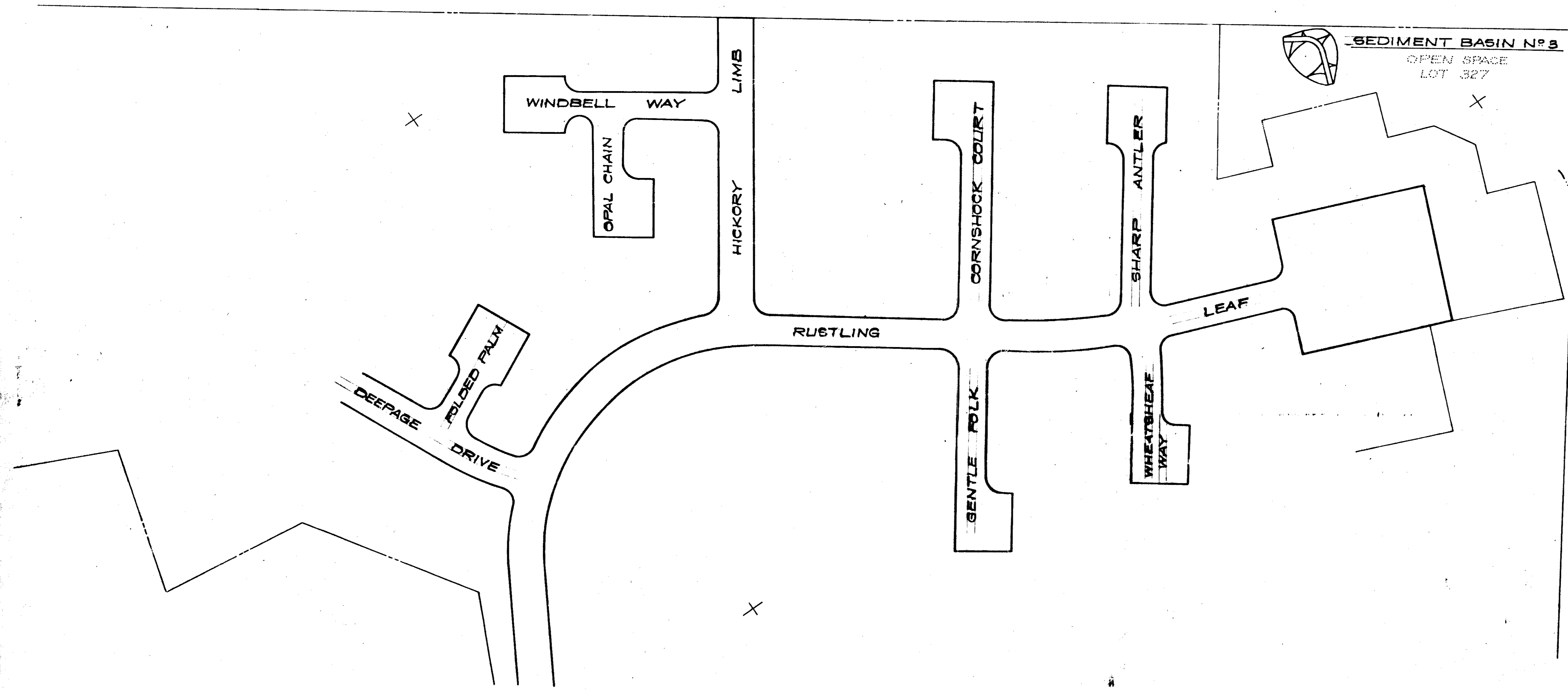
SEDIMENT BASIN N<sup>o</sup> 2

BALTIMORE GAS AND ELECTRIC COMPANY

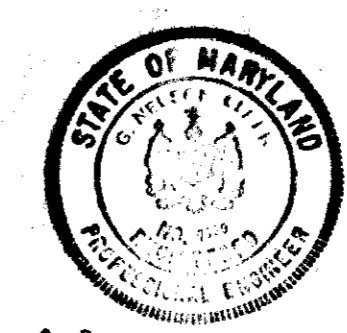
SEDIMENT BASIN N<sup>o</sup> 3

OPEN SPACE  
LOT 327

SEDIMENT BASIN N<sup>o</sup> 4



THE HOWARD RESEARCH AND  
DEVELOPMENT CORPORATION



*W. V. Clark*  
1-18-74

*2/19/74  
J. N. C.*

<b>CLARK • FINE ROCK &amp; SACKETT</b> ENGINEERS • PLANNERS • SURVEYORS 11311 LOCKWOOD DRIVE • SILVER SPRING, MARYLAND 20904 • (301) 593-3400		
DESIGNED BY	R.J.S.	SEDIMENT & EROSION CONTROL PLAN
DRAWN BY	SUZAN	LOCATION OF EX SEDIMENT BASINS
CHECKED BY	G.N.C.	<b>COLUMBIA</b> VILLAGE OF OWEN BROWN SECTION 2 AREA 3 4 <sup>TH</sup> ELECTION DISTRICT HOWARD COUNTY, MARYLAND
DATE	Jan, 1974	FOR: RYLAND HOMES COLUMBIA DIVISION Suite 200 V.O.M. Office Bldg. Columbia, Md. 21048
SCALE	1" = 100'	DRAWING NO. 30FS
JOB NO.		FILE NO. 1118-GE

1074-30C