

VICINITY MAP
Scale: 1"=800'

LEGEND

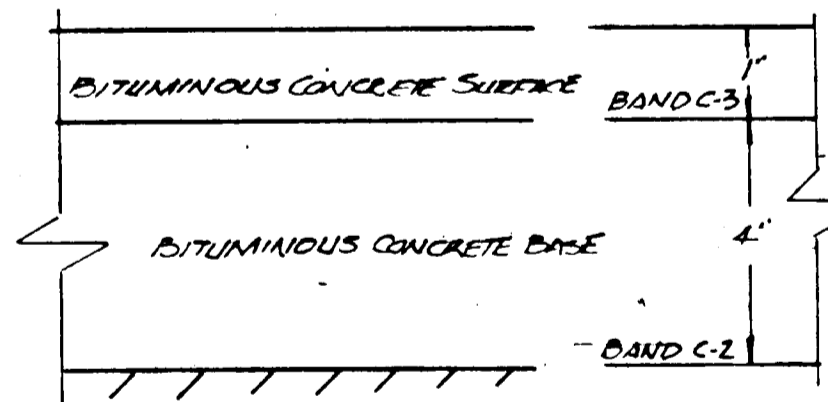
- Contours:
Existing - - - - - (1' interval)
Proposed - - - - - (1' interval)
- Proposed Storm Drains
- Bituminous Concrete Paving Section
- Concrete Paving

GENERAL NOTES

- Total Area: 2.863 Ac. ±
- Zoned: B-2
- Use: Automobile Dealership
- Total Number of Employees: 40
- Proposed grades contours represent finished grades, contractor shall make allowances to subgrade for topsoil, paving and other surface finishes as required.
- Contours & elevations are controls only. All grading is to be smooth and continuous.
- Limits of work for excavation, grading, seeding and mulching shall be represented by undisturbed contours.
- Report all discrepancies to the engineer immediately.
- Minimum building set back restrictions from property lines and the R/W line of any public road or street to be in accordance with Howard County Zoning Regulations.
- All on site roads and parking facilities shall be privately owned.
- All construction materials and details shall be in accordance with the latest revisions of the Howard County Road Construction Code and Standard Specifications.
- See architectural drawings for building dimensions.
- Location of existing utilities is approximate only and is obtained from recorded drawings. Contractor shall notify all utility companies involved and locate all existing utilities to his own satisfaction before any connections are made.
- Public water and sanitary sewer facilities are available.
- Water and sewer layout shown on this plan is schematic only.
- All parking lot paving shall consist of 4" Bituminous Concrete Base, Band C-2 or C-3 and 1" Bituminous Concrete Surface Course, Band C-3.
- Base will be primed in accordance with C-30-3 as provided in the Howard County Road Construction Code and Standard Specifications.
- Tack Coat is required in accordance with Section C-31-4 of the Howard County Road Construction Code and Standard Specifications.
- All curbs to be Howard County Standard 7" Combination Curb & Gutter.
- Existing curbs at entrances A & B, to be removed; Tie proposed curblines to existing curb.
- All sidewalks to be 4'-0" wide concrete.
- Paving within MARYLAND STATE HIGHWAY 455E R/W will be 9" Compacted Bituminous Concrete (6" Base - 3" Surface)

AREA TABULATION

- TOTAL AREA = 124,712 sq ft
- Maximum allowance coverage = 62,356 sq ft
- Proposed Coverage = 22,500 sq ft
- TOTAL FLOOR AREA = 23,742 sq ft

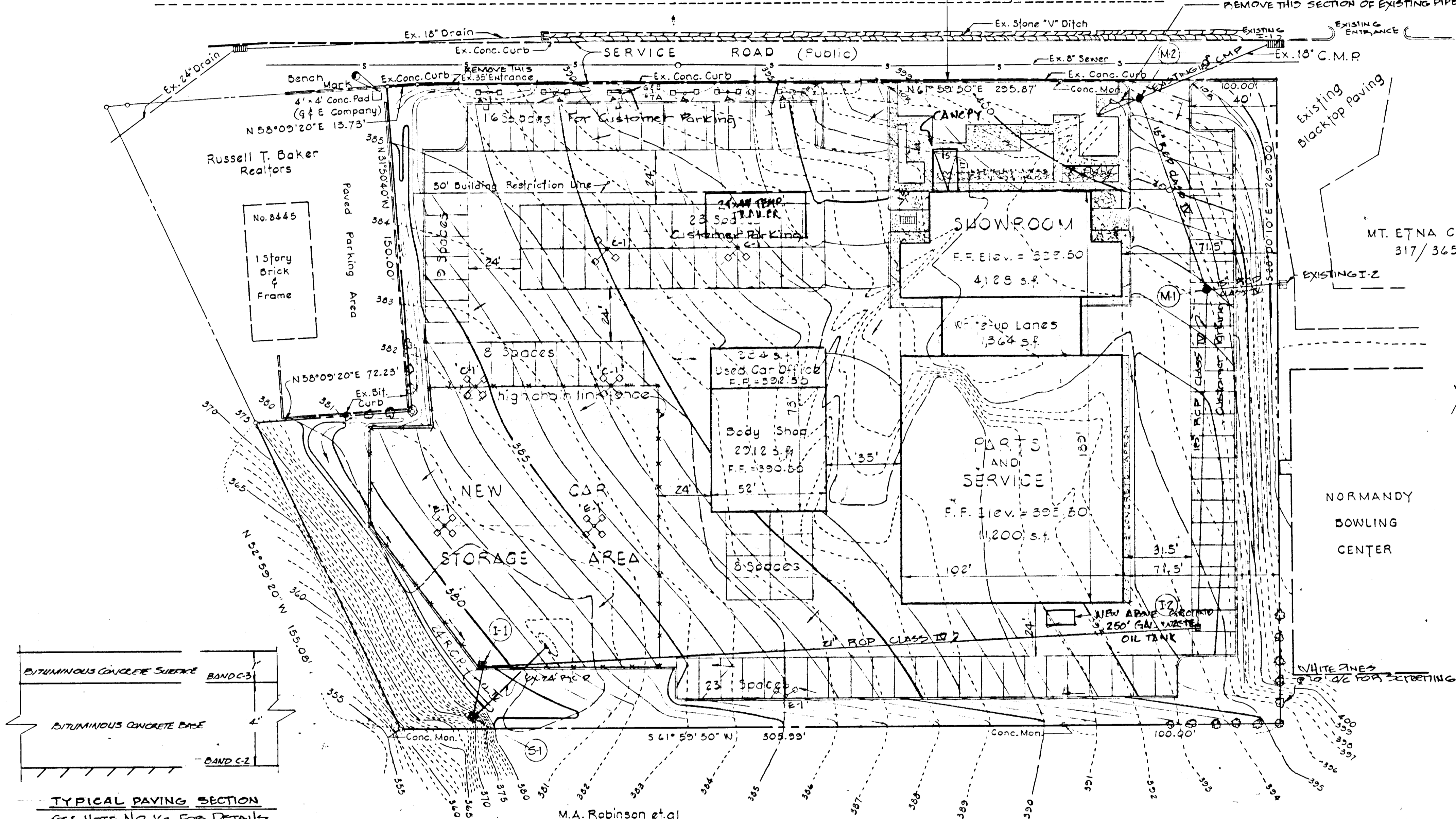


TYPICAL PAVING SECTION

SEE NOTE NO 16 FOR DETAILS

PARKING TABULATION

- Sales Area
Car Sales 4392 sq ft
Parts Dept. 144 sq ft
Total 4536 sq ft of retail sales area.
- No. of spaces required @ 1 space per 100 sq ft of retail sales area = 45
- No. of spaces required @ 1 space per 2 employees = 20
- Total no. of spaces required = 65
- No. of spaces provided = 1
- All spaces 10' x 20'



PLAN

Scale: 1"=30'

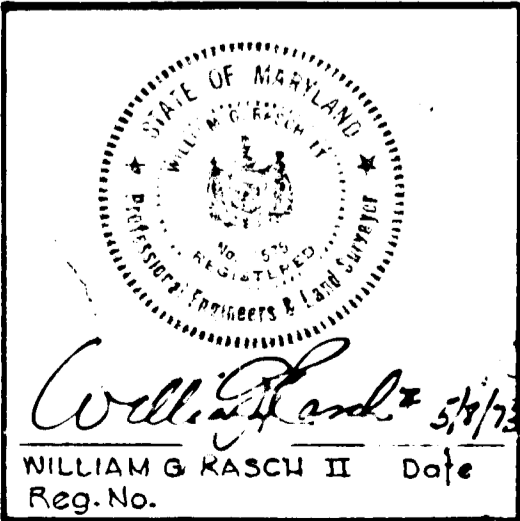
APPROVED
DIVISION OF LAND DEVELOPMENT
AND TRANSPORTATION PLANNING
HOWARD COUNTY, MARYLAND
DATE 6/26/73
V.L. 31

Des. MME
Orav. MM/RC
CHK.
APPROVED: For public water, public sewerage, storm drainage systems and public roads. HOWARD COUNTY DEPARTMENT OF PUBLIC WORKS.
W. G. [Signature] 8/12/73
Director Date
S. H. [Signature] 8/17/73
Chief, Bureau of Highways Date

APPROVED: HOWARD COUNTY OFFICE OF PLANNING AND ZONING.
D. [Signature] 8-28-73
Planning Director Date
V. [Signature] 8-22-73
Chief, Division of Land Development and Transportation Planning Date
APPROVED: For public water and public sewerage systems. HOWARD COUNTY HEALTH DEPARTMENT
G. [Signature] 8/27/73
County Health Officer Date

AMERICAN MOTORS
2nd. ELECTION DIST. HOWARD CO. MD.
SCALE: AS SHOWN APR. 4, 1973
TAX MAP # 16

PURDUM & JESCHKE
CONSULTING ENGINEERS
AND LAND SURVEYORS
1023 N. CALVERT ST.
BALTIMORE, MARYLAND



PROJECT DATA

BUILDING			
ITEM	NEW	EXIST	GUIDE
SHOWROOM			
OFFICE (1)			
OFFICE (2)			
PARTS (1)			
PARTS (2)			
SERVICE			
BODY SHOP			
TOTALS			

OPTIONS			
ITEM	NEW	EXIST	TOTAL
U.C. OFFICE			
CANOPES			
TOTALS			

STALLS / UNITS			
ITEM	NEW	EXIST	GUIDE
SERVICE			
BODY SHOP			
USED CAR			
TOTALS			

LAND			
CLASS	NEW	EXIST	TOTAL
GUIDE			
PRIMARY			
OFF-SITE			
STOCKPILE			
TOTALS			

EQUIPMENT LIST		TOTAL
LIFTS		
COMP.		
P. BOOTH		
TOTALS		

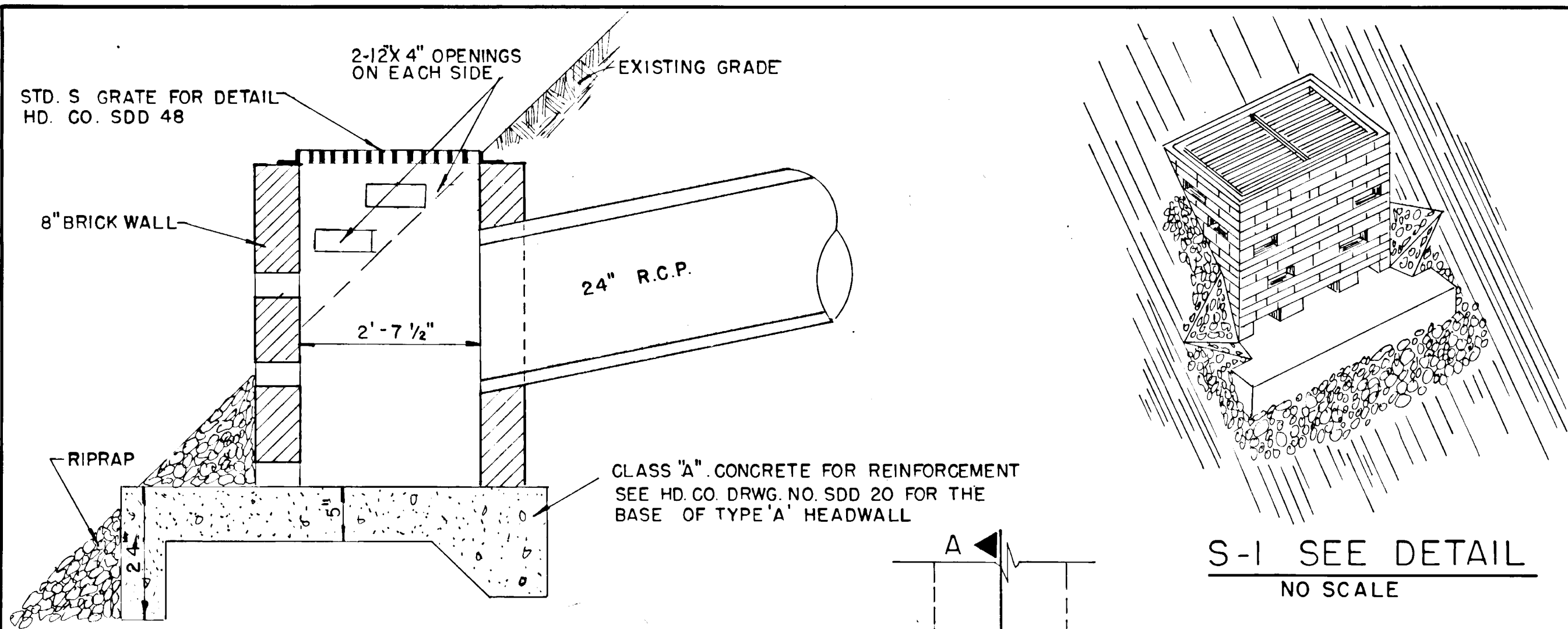
REVISIONS			
NO.	DATE	BY	DESCRIPTION
1.	6/10/73	D.S.	REVISED ZONING
2.	7-14-73	D.W.	ADD WASTE OIL TANK, ASH PIT, SAILER.

APPROVALS	
DI.	DATE:
ZONE	DATE:
D.I.R.	DATE:

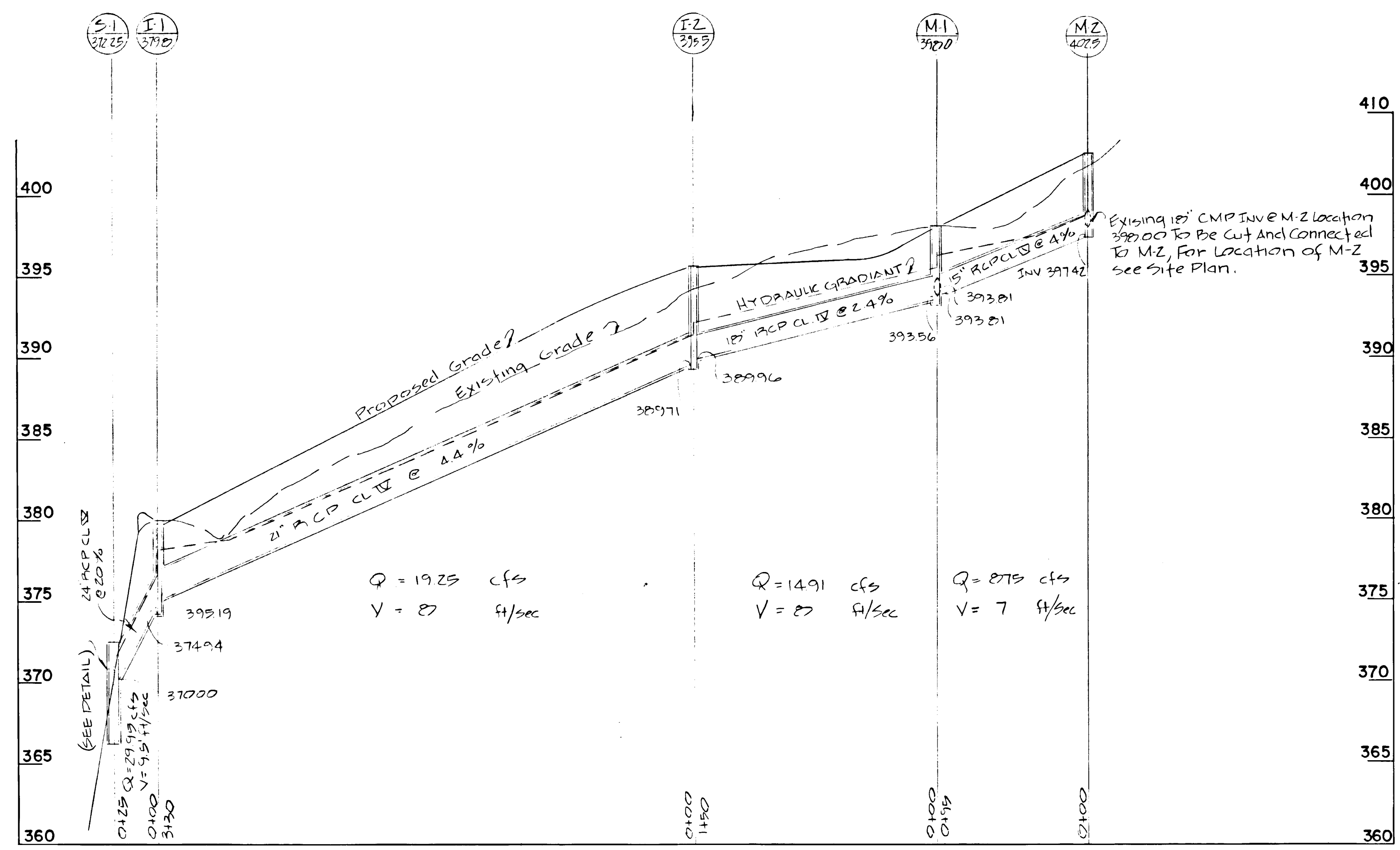
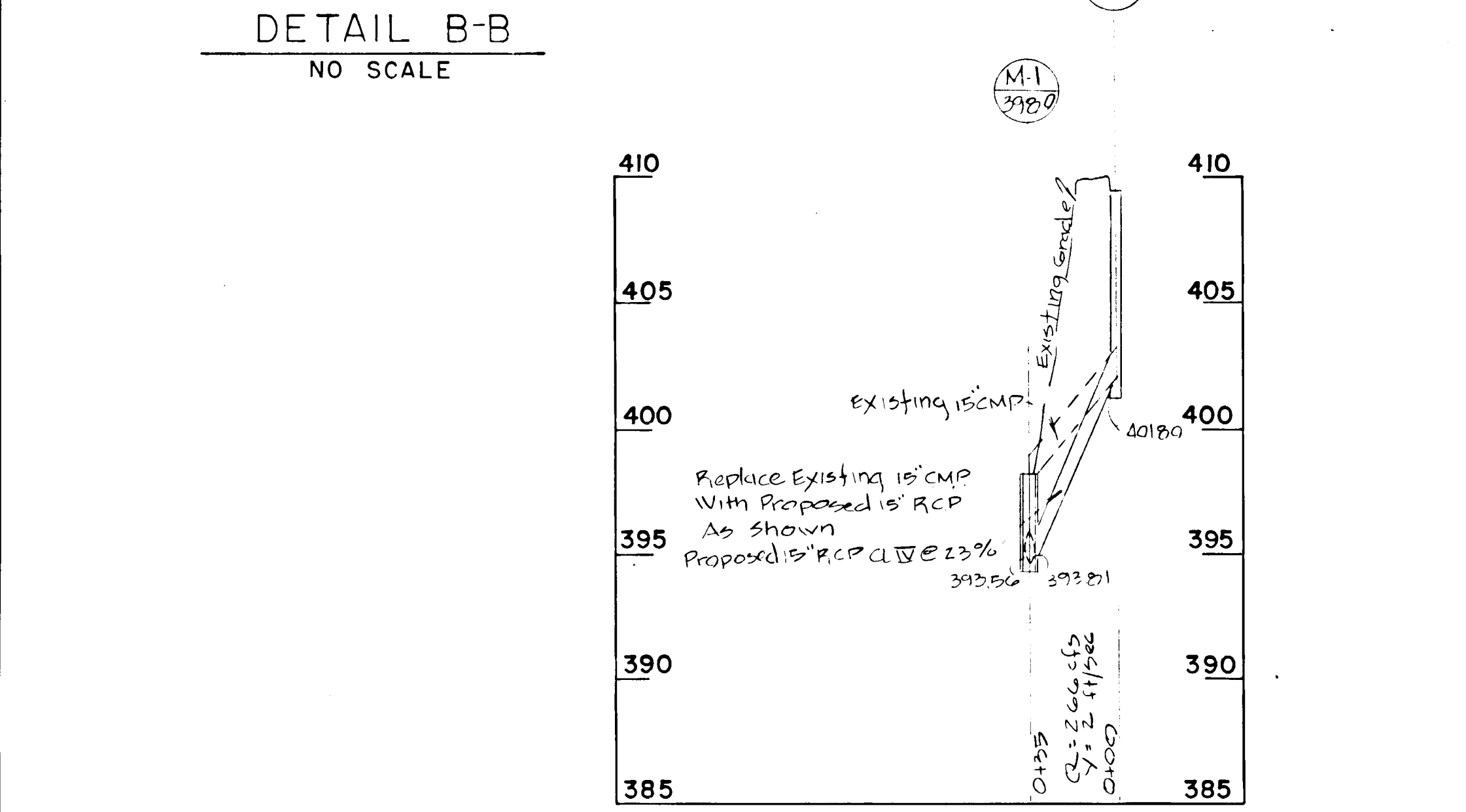
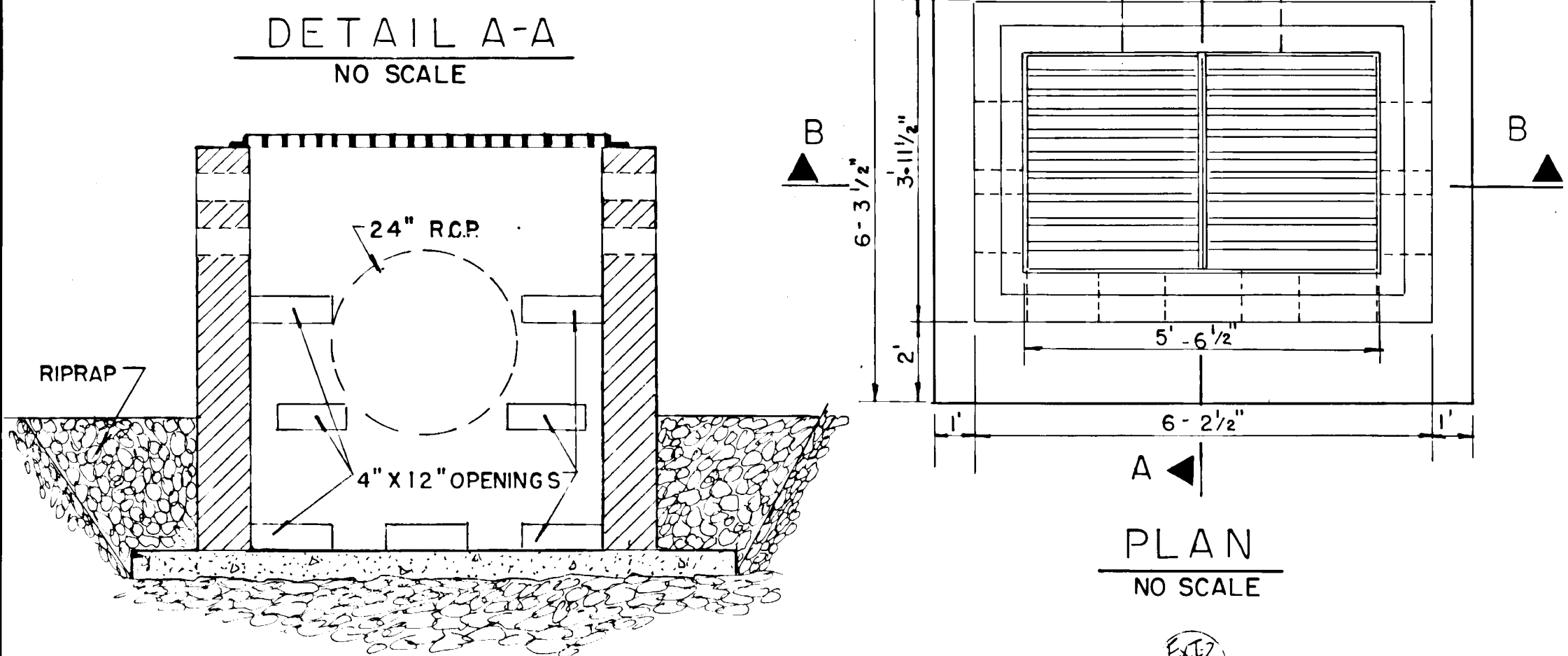


American Motors

FACILITY	
DEPT:	
SHEET TITLE:	
DR. BY:	PROJ. NO.
DATE:	SHEET NO.
	1 OF 4



STRUCTURE		SCHEDULE			
NO	TYPE	INV.IN	INV.OUT	TOP ELEV.	REMARKS
S-1	SEE DETAIL		3700		
I-1	"E" INLET	375.19	374.94	379.80	HD. CO. SDD 35
I-2	"E" INLET	389.96	389.71	395.50	HD. CO. SDD 35
M-1	A-1	393.81	393.56	398.00	HD. CO. SDD 7
M-2	A-1	397.59	397.42	402.50	HD. CO. SDD 7



STORM DRAIN PROFILE

SCALE:
 HORZ. 1"=50'
 VERT. 1"=5'

APPROVED
 DIVISION OF LAND DEVELOPMENT
 AND TRANSPORTATION PLANNING
 HOWARD COUNTY, MARYLAND
 DATE: 6/26/73

APPROVALS	
DI.	DATE:
ZONE	DATE:
DLR.	DATE:



PURDUM & JESCHKE
 CONSULTING ENGINEERS
 AND LAND SURVEYORS
 1023 N. CALVERT ST.
 BALTIMORE, MARYLAND

APPROVED: For public water, public sewerage, Storm Drainage Systems and public roads. Howard County Department of Public Works.

William G. Altman 8/17/73
 Director Date

Chief: Bureau of Highways Date

APPROVED: Howard County Office of Planning and Zoning

Thomas A. Hanigh 8-28-73
 Planning Director Date

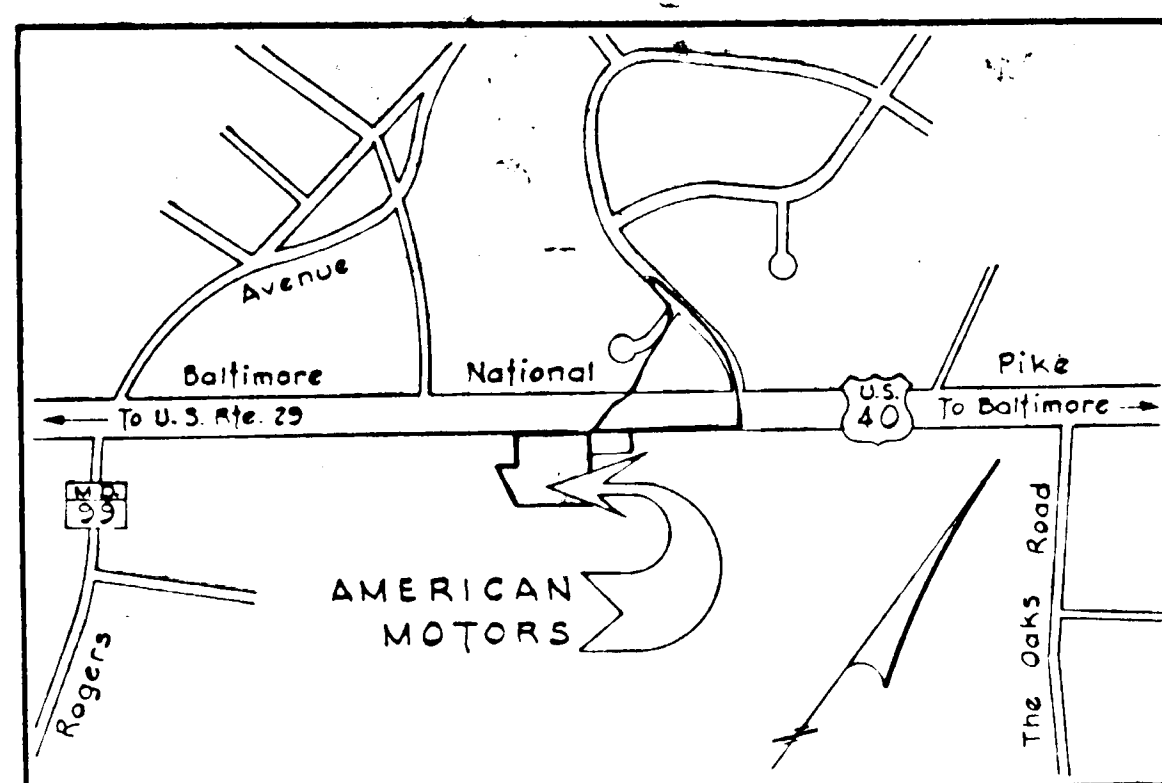
Chief: Division of Land Development: Date

APPROVED: For public water and public sewerage systems. Howard County Health Department

Joseph M. D. 5/27/73
 County Health Officer Date

AMERICAN MOTORS
 2ND. ELECTION DIST. HOWARD CO. MD.
 SCALE AS SHOWN MAY 7, 1973

FACILITY	
DEPT.	
SHEET TITLE:	
STORM DRAINS	P.P.
DR BY D.S.	PROJ NO
DATE 5/7/73	DES. MME
SHEET NO. 2 OF 4	



VICINITY MAP
Scale: 1" = 800'

LEGEND

- Contours:
Existing (1' interval)
Proposed (1' interval)
- Proposed Storm Drains
- Bituminous Concrete Paving Section
- Concrete Paving

GENERAL NOTES

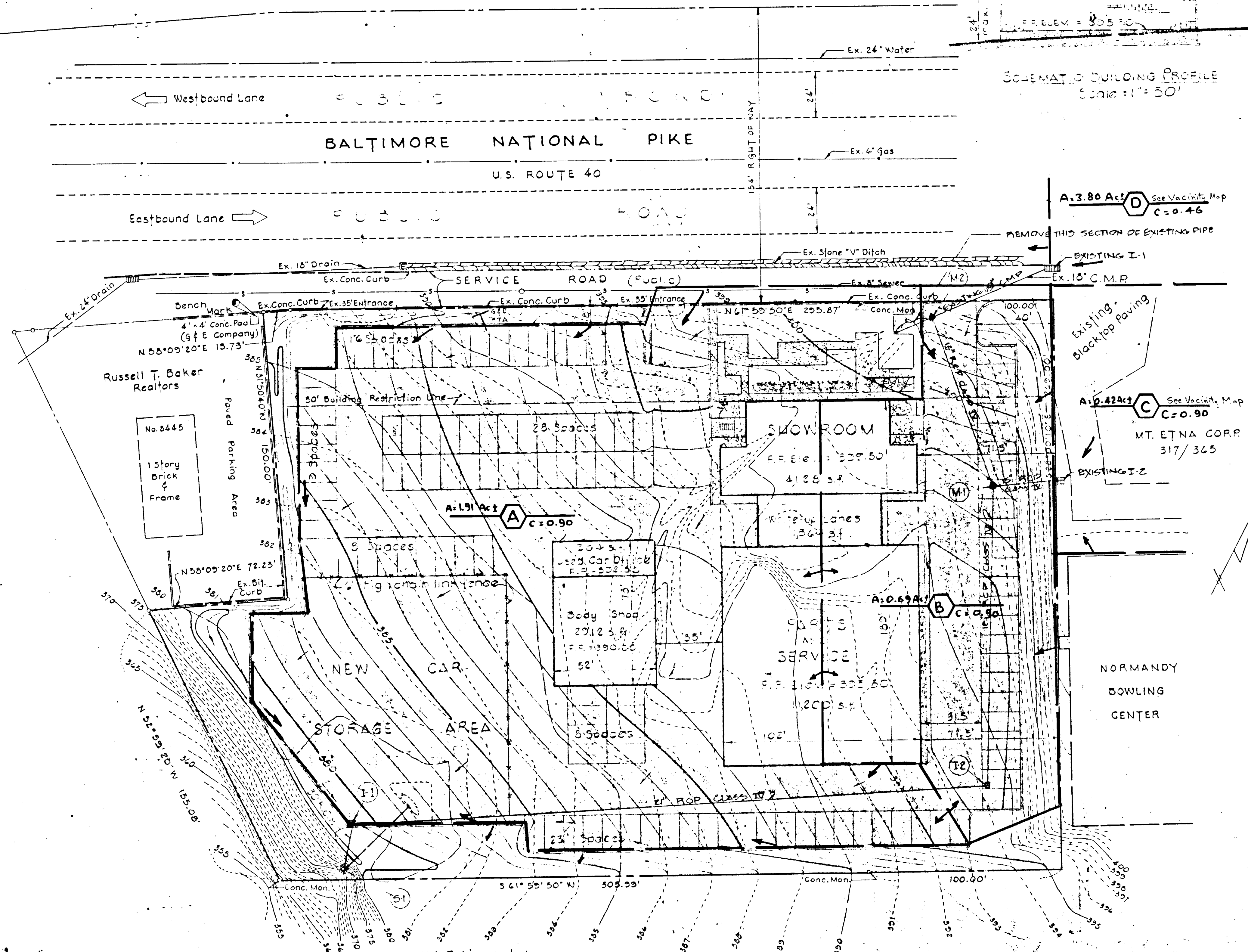
- Total Area: 2.863 Ac. ±
- Zoned: B-2
- Use: Automobile Dealership
- Total Number of Employees: 40
- Proposed grades contours represent finished grades, contractor shall make allowances to subgrade for topsoil, paving and other surface finishes as required.
- Contours & elevations are controls only. All grading is to be smooth and continuous.
- Limits of work for excavation, grading, seeding and mulching shall be represented by undisturbed contours.
- Report all discrepancies to the engineer immediately.
- Minimum building set back restrictions from property lines and the R/W line of any public road or street to be in accordance with Howard County Zoning Regulations.
- All on site roads and parking facilities shall be privately owned.
- All construction materials and details shall be in accordance with the latest revisions of the Howard County Road Construction Code and Standard Specifications.
- See architectural drawings for building dimensions.
- Location of existing utilities is approximate only and is obtained from recorded drawings. Contractor shall notify all utility companies involved and locate all existing utilities to his own satisfaction before any connections are made.
- Public water and sanitary sewer facilities are available.
- Water and sewer layout shown on this plan is schematic only.
- All parking lot paving shall consist of 4" Bituminous Concrete, Base, Band C-2 or C-3 and 1" Bituminous Concrete Surface Course, Band C-3.
- Raise will be primed in accordance with C-30-3 as provided in the Howard County Road Construction Code and Standard Specifications.
- Tack Coat is required in accordance with Section C-31.4 of the Howard County Road Construction Code and Standard Specifications.
- All curbs to be Howard County Standard 7" Combination Curb & Gutter.
- Existing curbs at entrances A & B, to be removed; Tie proposed curblines to existing curb.
- All sidewalks to be 4'-0" wide concrete.

AREA TABULATION

- Total Area = 124,712 sq ft
- Maximum allowable coverage = 62,356 sq ft
- Proposed coverage = 20,588 sq ft
- Total Floor Area = 23,742 sq ft

PARKING TABULATION

- Sales Area
Car Sales 4392 sq ft
Car Dept. 144 sq ft
Total 4536 sq ft of retail sales area.
- No. of spaces required @ 1 space per 100 sq ft of retail sales area = 45
- No. of spaces required @ 1 space per 2 employees = 20
- Total no. of spaces required = 65
- No. of spaces provided = 1
- All spaces 10' x 20'



PLAN
Scale: 1" = 30'

APPROVED
DIVISION OF LAND DEVELOPMENT
AND TRANSPORTATION PLANNING
HOWARD COUNTY, MARYLAND
DATE 6/26/73

PURDUM & JESCHKE
CONSULTING ENGINEERS
AND LAND SURVEYORS
1023 N. CALVERT ST.
BALTIMORE, MARYLAND



APPROVED: For public water, public sewerage, storm drainage systems and public roads. HOWARD COUNTY DEPARTMENT OF PUBLIC WORKS.
William J. Altman 8/17/73
Director

APPROVED: HOWARD COUNTY OFFICE OF PLANNING AND ZONING.
Thomas G. Harris 8-28-73
Planning Director
6/28/73
Director
Development and Transportation Planning
APPROVED: For public water and public sewerage systems. HOWARD COUNTY HEALTH DEPARTMENT.
John T. M. D. 7/27/73

AMERICAN MOTORS
2nd. ELECTION DIST. HOWARD CO. MD.
SCALE: AS SHOWN
TAX MAP # 13

PROJECT DATA

BUILDING			
ITEM	NEW	EXIST	GUIDE
SHOWROOM			
OFFICE (1)			
OFFICE (2)			
PARTS (1)			
PARTS (2)			
SERVICE			
BODY SHOP			
TOTALS			

OPTIONS			
ITEM	NEW	EXIST	TOTAL
U.C. OFFICE			
CANOPES			
TOTALS			

STALLS/UNITS			
ITEM	NEW	EXIST	GUIDE
SERVICE			
BODY SHOP			
USED CAR			
TOTALS			

LAND			
CLASS	NEW	EXIST	TOTAL
GUIDE			
PRIMARY			
OFF SITE			
STOCKPILE			
TOTALS			

EQUIPMENT LIST		TOTAL
LIFTS		
COMP.		
P. BOOTH		
TOTALS		

REVISIONS			
NO.	DATE	BY	DESCRIPTION

APPROVALS	
DL	DATE
ZONE	DATE
DLR	DATE

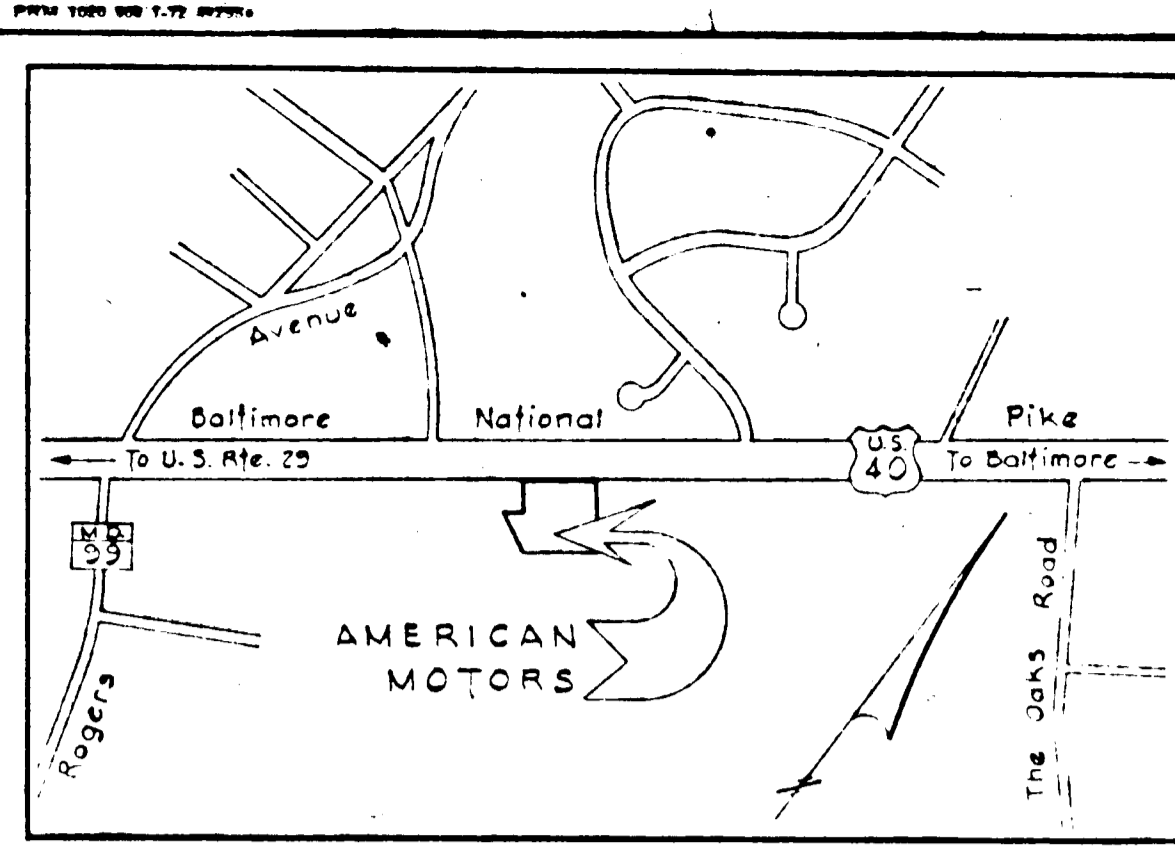


AMERICAN MOTORS

FACILITY
DEPT.

SHEET TITLE: DRAINAGE AREA MAP		P.P.
DR BY:	PROJ. NO.	SHEET NO.
DATE:		3 of 4

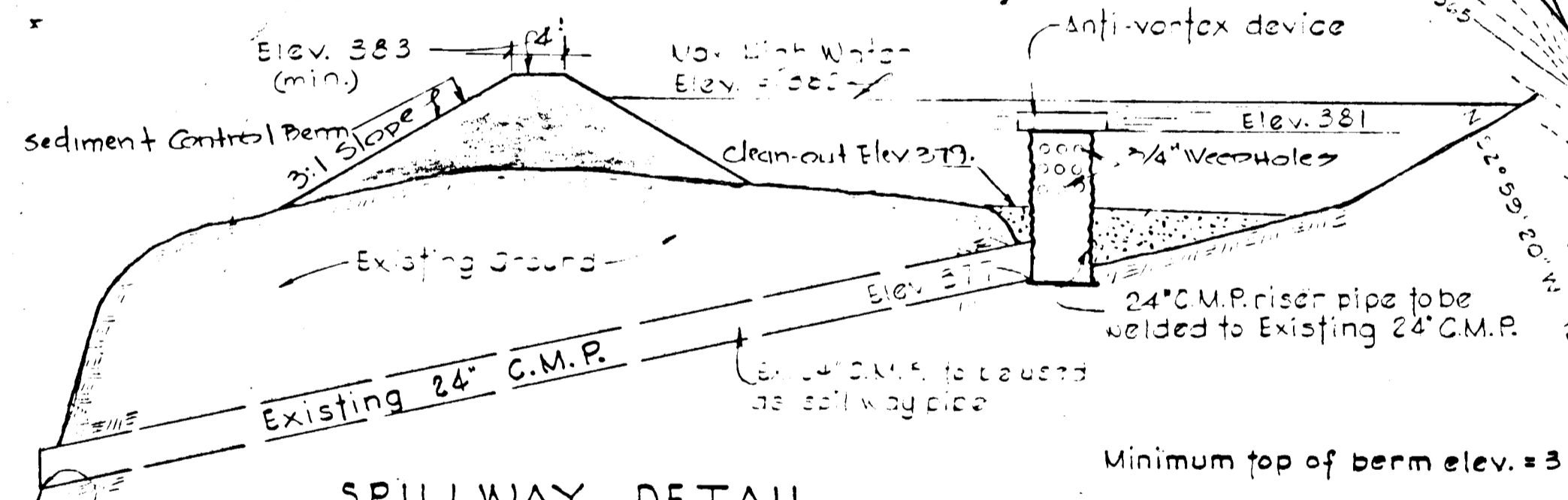
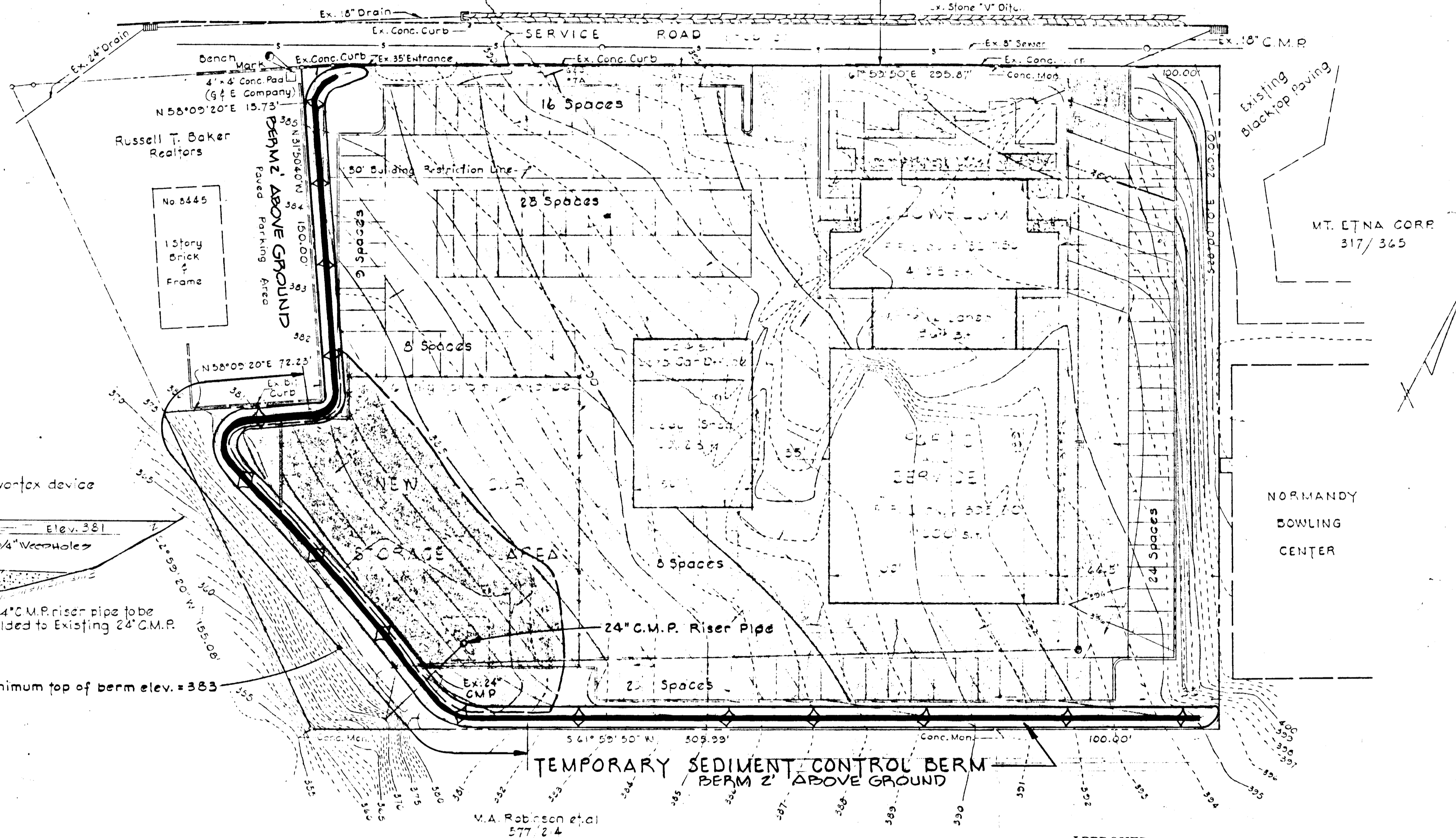
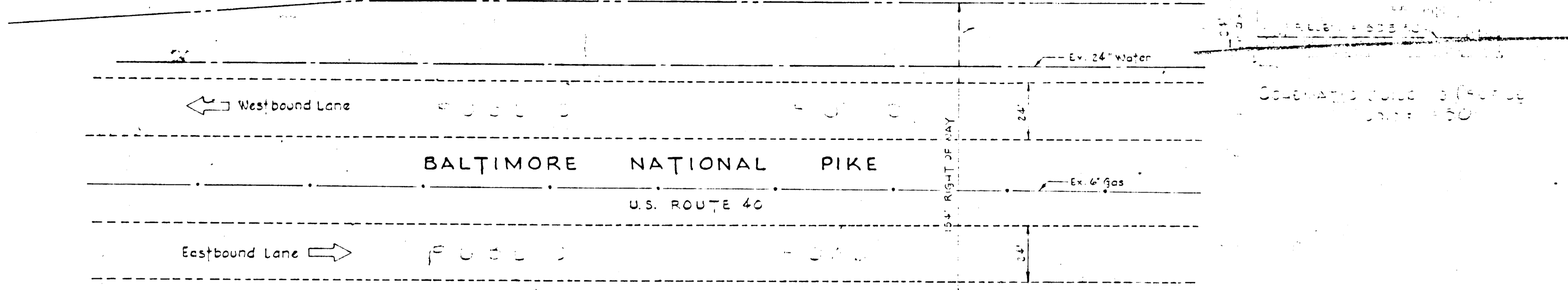
SDP 73-101



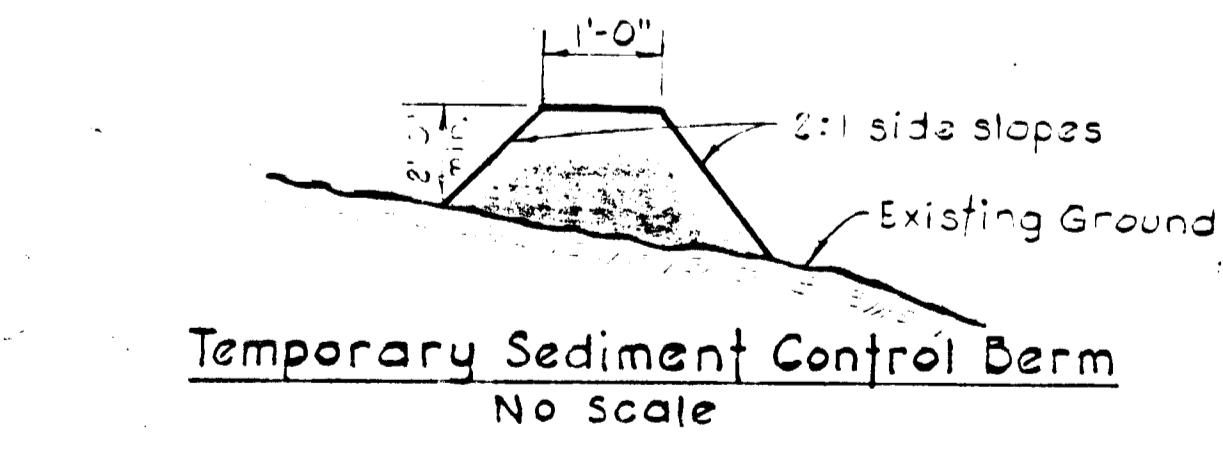
VICINITY MAP
Scale: 1"=600'

SEDIMENT CONTROL NOTES

- The developer shall notify the Howard County Soil Conservation District at least 24 hours prior to beginning any construction shown hereon.
- Sediment control measures must be installed and stabilized prior to any grading operations.
- All disturbed areas shall be stabilized by seeding and/or sodding in accordance with standards and specifications for soil erosion and sediment control in urbanizing areas for critical area stabilization immediately following earthwork operations.
- Sediment control measures shown on plan are not to be removed except with permission of Soil Conservation District.
- All areas disturbed by grading or contractor's operations not being paved shall be topsoiled, seeded and mulched in accordance with the following:
 - Place 3" (inch) compacted layer of topsoil to finished grade.
 - Spread pulverized dolomitic limestone at the rate of 1 ton/acre.
 - Spread 10-10-10 commercial grade fertilizer at the rate of 1000 lbs./acre and immediately disc into topsoil to a depth of 3 inches.
 - Seed prepared areas at the rate of 200 lbs./acre, using Kentucky Fescue 31.
 - Mulch all areas immediately after seeding with unweathered small grain straw or hay at the rate of 1.5 tons/acre; spray mulch with emulsified asphalt at the rate of 0.24 gal./sq.yd.
- No slopes steeper than 2:1 shall be created.
- All slopes steeper than 3:1 shall be topsoiled, seeded and mulched as in 5) above except seed with Crown Vetch or approved equivalent. Mulch shall be anchored with plastic netting and staples.



SPILLWAY DETAIL
No Scale



Temporary Sediment Control Berm
No Scale

PLAN
Scale: 1"=30'

APPROVED
DIVISION OF LAND DEVELOPMENT
AND TRANSPORTATION PLANNING
HOWARD COUNTY, MARYLAND
DATE 6/26/73

PROJECT DATA			
BUILDING			
ITEM	NEW	EXIST	GRADE
SHOWROOM			
OFFICE (1)			
OFFICE (2)			
PARTS (1)			
PARTS (2)			
REPAIR			
HOOD SHOP			
TOTALS			

OPTIONS			
ITEM	NEW	EXIST	TOTAL
U.C. OFFICE			
PARKING			

STALLS/UNITS			
ITEM	NEW	EXIST	GRADE
SERVICE			
BODY SHOP			
USED CAR			

LAND			
CLASS	NEW	EXIST	TOTAL
URB			
PRIMARY			
OFF SITE			
STOCKPILE			

EQUIPMENT LIST		TOTAL
LIFTS		
COMP.		
P. ROOMS		

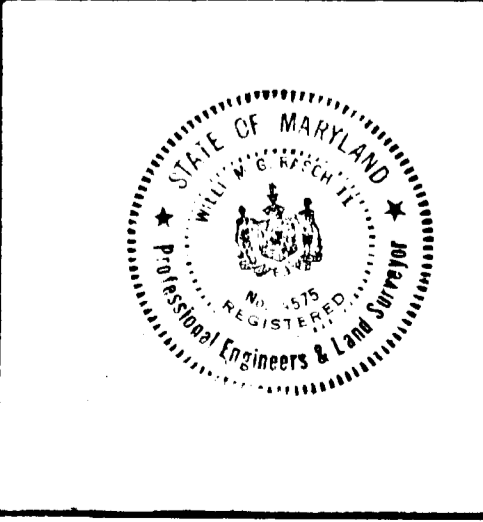
REVISIONS			
NO.	DATE	BY	DESCRIPTION

APPROVALS	
DL	DATE
ZONE	DATE
DLR	DATE



American Motors

PURDUM & JESCHKE
CONSULTING ENGINEERS
AND LAND SURVEYORS
1023 N. CALVERT ST.
BALTIMORE, MARYLAND



PROFESSIONAL ENGINEER
"I certify that this plan for Erosion and Sediment Control represents a practical and workable plan based on my personal knowledge of the site conditions and that it was prepared in accordance with the requirements of the Howard Soil Conservation District."
William G. Rasch, II
William G. Rasch, II
Reg. No. 4575

APPROVED: For public water, public sewerage Storm Drainage Systems and public roads. Howard County Department of Public Works.
William A. Alt 6/17/73
Director
John W. Mealand 8/17/73
Chief: Bureau of Highways

HOWARD SOIL CONSERVATION DISTRICT
Reviewed for *Howard* S.C.D. and meets Name
and meets Technical Requirements *Charles F. Nulley* Date 8/13/73
Signature
THIS DEVELOPMENT PLAN IS APPROVED FOR SOIL EROSION AND SEDIMENT CONTROL BY THE HOWARD SOIL CONSERVATION DISTRICT
Approved *Robert W. Ziel* Date 8-13-73
Howard S.C.D.

DEVELOPER
"I certify that all development and/or construction will be done according to this plan of development and plan for Erosion and Sediment Control, and I also authorize periodic on-site inspection by the Howard Soil Conservation District or their authorized agents, as are deemed necessary." Derivation from this plan will not be made unless authorized by the Howard Soil Conservation District.
By: *Harold A. Adell* 7/25/73
Signature Date
152 AMERICAN MOTORS CORP.

SEDIMENT CONTROL PLAN
AMERICAN MOTORS
2nd. ELECTION DIST. HOWARD CO. MD.
SCALE: AS SHOWN APR 1, 1973
TAX MAP # 13

FACILITY	
DEPT.	
SHEET TITLE	
PP.	
DR. BY	PROJ. NO.
DATE	SHEET NO.
	4 OF 4