

VICINITY MAP
SCALE 1"=1000'



ST. JOHN'S LANE

- NOTES:
- COORDINATES AND BEARINGS SHOWN ARE BASED ON THIS PLAN AND REFERRED TO STATE BOARD COMMISSIONERS' PLAN 5344
 - ELEVATIONS SHOWN ARE BASED ON HOWARD COUNTY CLERMONT
 - UTILITIES AND OTHER OBSTRUCTIONS AS SHOWN HEREON HAVE BEEN MADE BY ACTUAL FIELD MEASUREMENTS SUPPLEMENTED BY INFORMATION OBTAINED FROM THE VARIOUS AGENCIES INVOLVED. HOWEVER, WE DO NOT GUARANTEE THE ACCURACY OR THE COMPLETENESS OF THE INFORMATION GIVEN. THE CONTRACTOR MUST VERIFY ALL SUCH INFORMATION TO HIS OWN SATISFACTION AND MUST NOTIFY THE UTILITY COMPANIES INVOLVED PRIOR TO COMMENCING WORK.
 - THE LINES AND GRADES OF THE PROPOSED ROADS SHOWN HAVE BEEN OBTAINED FROM PLANS OF THE LOCAL HIGHWAY AGENCIES. THEY ARE SUBJECT TO CHANGE UNTIL ACTUAL CONSTRUCTION.
 - UTILITY COMPANIES:
CHESAPEAKE & POTOMAC TELEPHONE COMPANY
320 ST. PAUL STREET, BALTO., MD. 21202
BALTIMORE GAS & ELECTRIC COMPANY
LEXINGTON & LIBERTY STREETS, BALTIMORE, MD. 21202

- GENERAL NOTES
- Total area of site = 22,013 sq. ft.
 - Existing Zoning = B2
 - Tax Map No. 24 Parcel 759
 - Total number of employees = 4
 - Total sales area needed for retail sales of supplies and equipment = 1,900 sq. ft.
 - Total parking spaces required at one (1) per two (2) employees and one (1) per hundred square feet of retail sales area = 4
 - Total parking provided at 10' x 20' = 6
 - Divid reference: EUM 264/227 LEASED FROM ST. JOHN'S CEMETERY
 - Maximum height of any structure 16'-0"

APPROVED FOR PUBLIC USE	DATE
7/13/74	
APPROVED HOWARD COUNTY OFFICE OF PLANNING AND ZONING	DATE
7-5-74	
APPROVED FOR PUBLIC USE, PUBLIC UTILITIES AND ROADS	DATE
7/15/74	
APPROVED FOR PUBLIC USE, PUBLIC UTILITIES AND ROADS	DATE
1/28/74	
REVIEWED FOR HOWARD COUNTY	DATE
1-25-74	

BY THE DEVELOPER:

I HEREBY CERTIFY THAT ALL DEVELOPMENT AND/OR CONSTRUCTION WILL BE DONE ACCORDING TO THE PLAN OF DEVELOPMENT AND PLAN FOR EROSION AND SEDIMENT CONTROL, AND I ALSO HEREBY CERTIFY THAT I AM A MEMBER OF THE HOWARD SOIL CONSERVATION DISTRICT OR THAT I AM AUTHORIZED BY THE HOWARD SOIL CONSERVATION DISTRICT TO SIGN THIS PLAN. THIS PLAN WILL NOT BE MADE UNLESS AUTHORIZED BY THE HOWARD SOIL CONSERVATION DISTRICT.

The American Oil Co. W. W. Harrison Project Eng'r 1-21-74

BY THE ENGINEER:

I HEREBY CERTIFY THAT THIS PLAN AND EROSION AND SEDIMENT CONTROL REPRESENTS A PRACTICAL AND WORKABLE PLAN BASED ON MY PERSONAL KNOWLEDGE OF THE SITE CONDITIONS AND THAT IT WILL BE KEPT IN ACCORDANCE WITH THE REQUIREMENTS OF THE HOWARD SOIL CONSERVATION DISTRICT.

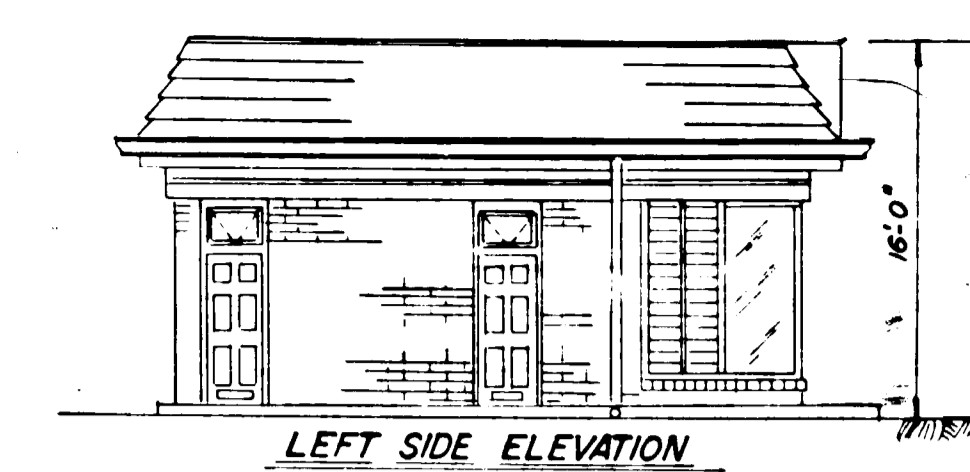
1-21-74

- GRADED & SEEDING AREA
- LIME - ADD LIME TO SOIL FOR PH VALUE OF NOT LESS THAN 6.0.
 - FERTILIZING - FERTILIZE SOIL WITH COMMERCIAL FERTILIZER OF AN ANALYSIS 8-10-8 APPLIED AT THE RATE OF 35 POUNDS PER 1000 SQUARE FEET.
 - SEED - FLAT AREAS - 45% KENTUCKY BLUE GRASS
35% RED CHESTNUT FESCUE
10% FANCY RED CLEANED RED TOP
5% PERENNIAL RYE
SLOPED AREAS - 65% KENTUCKY SI PEGCUB
15% LADINOGRASS KORMAN
15% RED TOP
5% PERENNIAL RYE
- APPLY SEED BY HYDRO SEED METHOD AT THE RATE 2 1/2 TO 3 POUNDS PER 1000 SQ. FT.
- D. MULCH - MULCH AT THE RATE OF 1 1/2 POUNDS PER 1000 SQ. FT. AND SECURE WITH ASPHALT SPRAY.

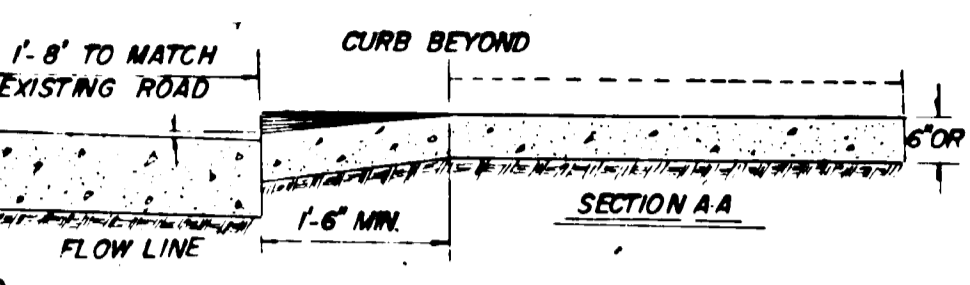
BALTIMORE NATIONAL PIKE

u.s. route 40

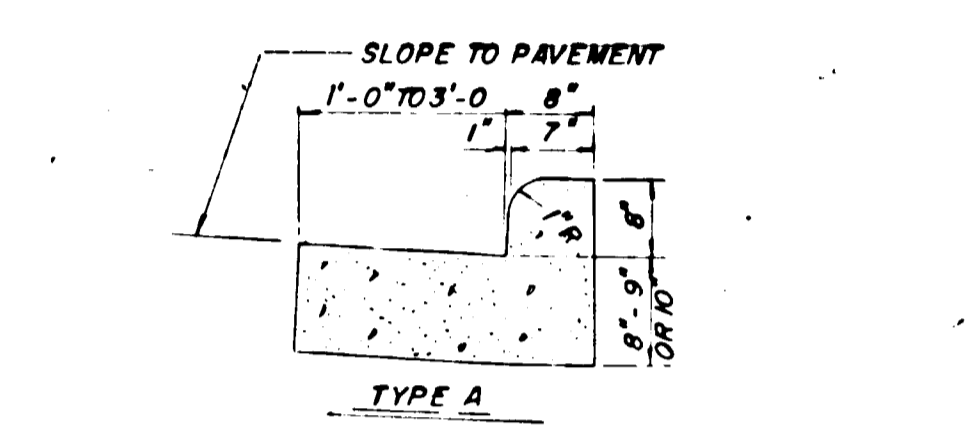
- GENERAL NOTES
- AREA OF BUILDING = 1,977 sq. ft.
 - AREA OF LOT = 22,013 sq. ft. or 0.605 AC.
 - PERCENT OF LOT COVERED = 8.98%
 - AREA OF SIGN FACE = 97 sq. ft.
 - HEIGHT OF SIGN = 26'-0"
 - ELECTRICAL SERVICE - 200AMPS MINIMUM
 - CONTRACTOR SHALL FURNISH AND INSTALL STEEL CURB FORMS PERMO OR EQUAL
 - CONTRACTOR SHALL INSPECT SITE FOR STRUCTURES, POLES, BUILDINGS, TREES, ETC. REQUIRING REMOVAL TO OBTAIN THE END RESULT. THE AMERICAN OIL COMPANY ASSUMES NO RESPONSIBILITY FOR OMISSIONS.
 - GRADING LEGEND - 200.00 EXISTING GRADE 200.00 PROPOSED FINISHED GRADE
 - C/D DRAWING "STANDARD DETAILS" NOS. 1, 2, 3, 4, 5, 6, 7, 8, 9, 10, 11, 12 APPLICABLE TO THIS PROJECT.
 - LAND LEASED FROM ST. JOHN'S CEMETERY OF HOWARD COUNTY TO THE AMERICAN OIL COMPANY
 - APPLICANT: AMERICAN OIL COMPANY, 10000 WOODBURN ROAD, BALTIMORE, MD. 21202
 - PAVING WITHIN ST. JOHN'S LANE SHALL COMPLY WITH DRAWING D-13 PAGE 405 HOWARD CO. ROAD CORP. & STANDARD SPEC. BASE COAT TO BE FRIED TO ACCORDANCE WITH SET 20-B HOWARD CO. ROAD CORP. & STANDARD SPEC. (SEE SECT. 2.0)
 - ON SITE ASPHALT PAVING TO COMPLY WITH DRAWING D-13 PAGE 405 HOWARD CO. ROAD CORP. & STANDARD SPEC. (SEE SECT. 2.0)
 - STORM RUN OFF CALCULATIONS BASED ON 10 YEAR STORM OF 6.2" RAINFALL PER HOUR.



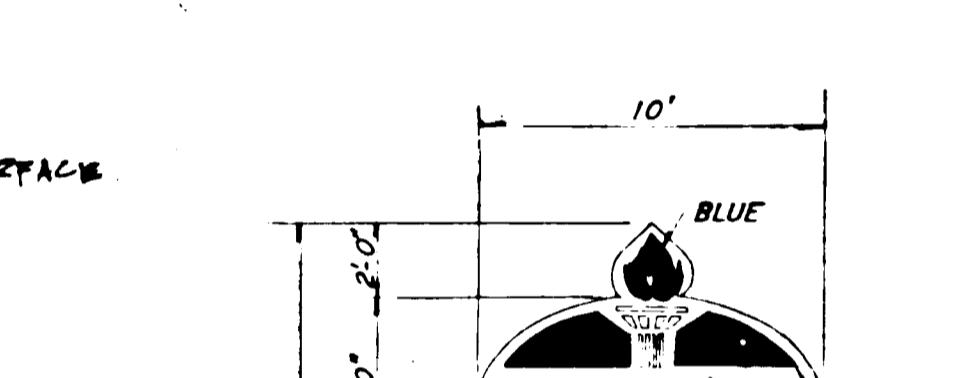
LEFT SIDE ELEVATION



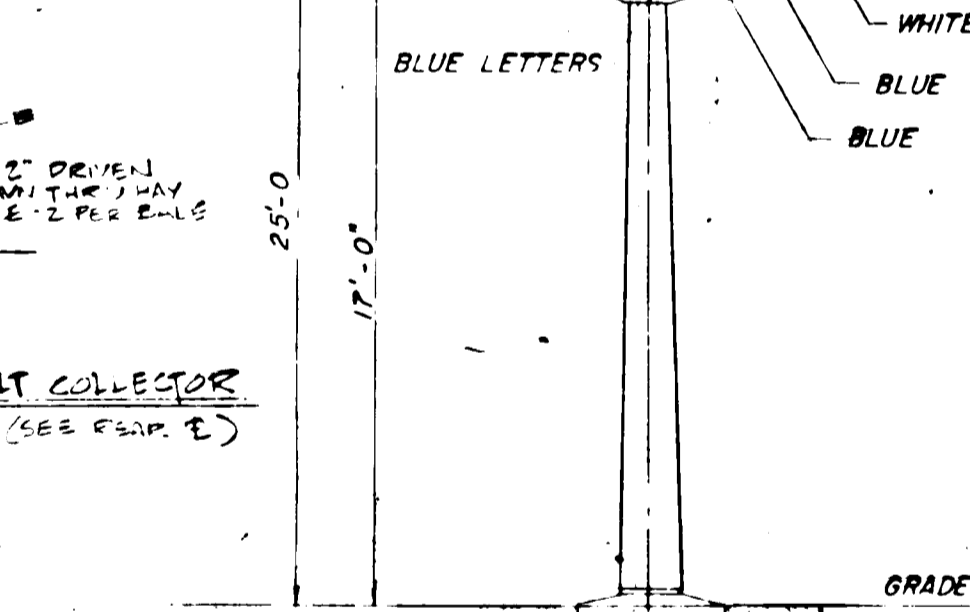
SECTION A-A



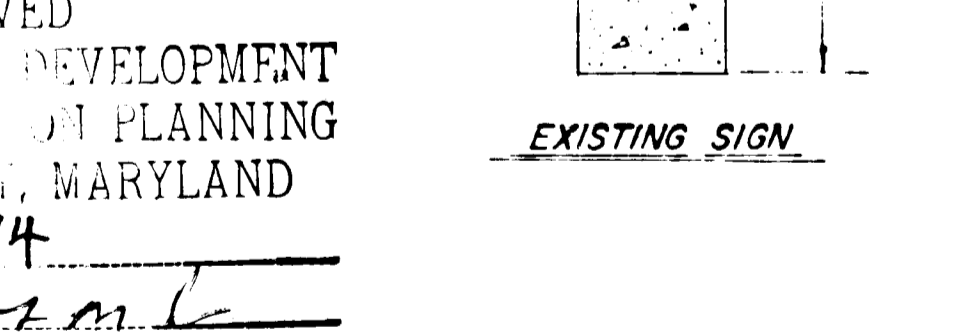
SECTION D-B



SECTION D-13



DETAIL OF HAY PALE SILT COLLECTOR FOR EROSION CONTROL (SEE SECT. E) NOT SCALE



EXISTING SIGN

APPROVED
DIVISION OF LAND DEVELOPMENT
AND TRANSPORTATION PLANNING
HOWARD COUNTY, MARYLAND
DATE: Jan 7, 74

W. W. Harrison

DATE	NO.	REVISION	BY
1-17-74	1	REVISED PER A.O.C. ENGINEER	W.S.
1-20-74	2	REVISED PER A.O.C. ENGINEER	W.S.
7-27-74	3	REVISED PER A.O.C. ENGINEER	W.S.
5-24-74	4	REVISED PER A.O.C. ENGINEER	PAJ
4-27-74	1	REVISED PER A.O.C. ENGINEER	PAJ

NOTE: MAINTENANCE OF NEW LANDSCAPING TO BE INCORPORATED IN DEALER LEASE

AMERICAN OIL STATION TAX MAP 24 PARCEL 759 ELECTION DISTRICT 2 HOWARD COUNTY MD.	PROPOSED SERVICE STATION US RTE. 40 & ST. JOHN'S LANE HOWARD COUNTY, MARYLAND
---	---

SCALE: 1"=10'-0"	BALTIMORE REGION
DRAWN BY: W. W. HARRISON	HOWARD DISTRICT
CHECKED: G. L. B.	NET USABLE FRONTAGE
APPROVED:	DATE: NOVEMBER 9, 1972
NO. 55-612	DO NOT SCALE. USE DIMENSIONS ONLY.

NG	TYPE	QUANT
A	UPRIGHT TAXUS (NEW)	40
B	JUNIPER HORIZONTALIS 25P	22