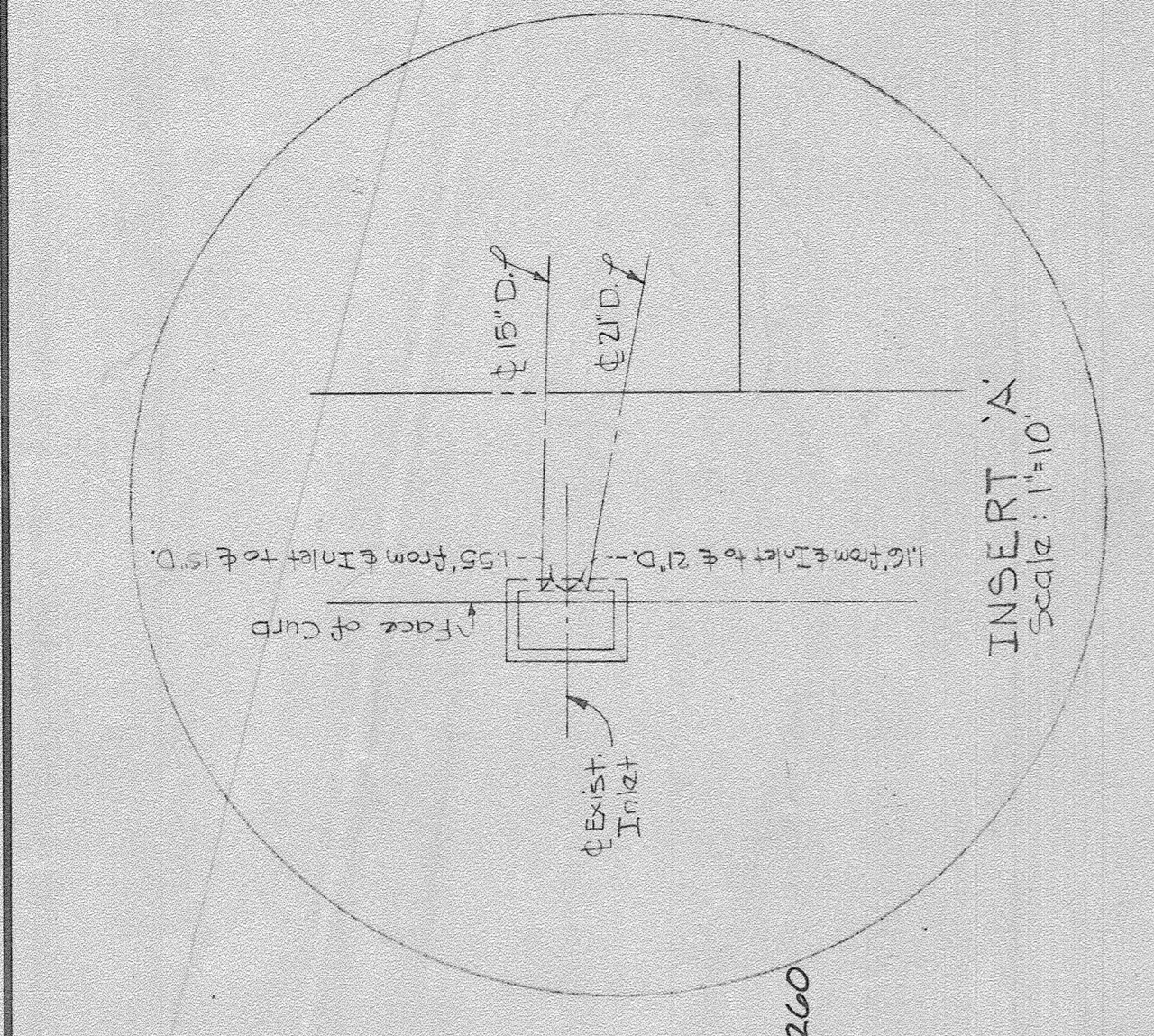
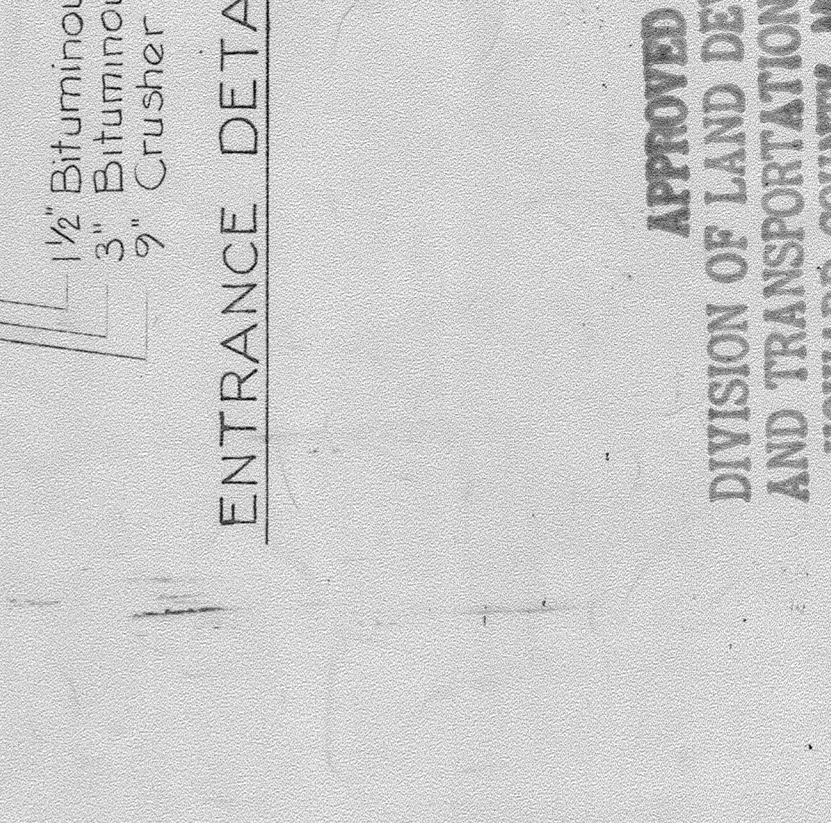
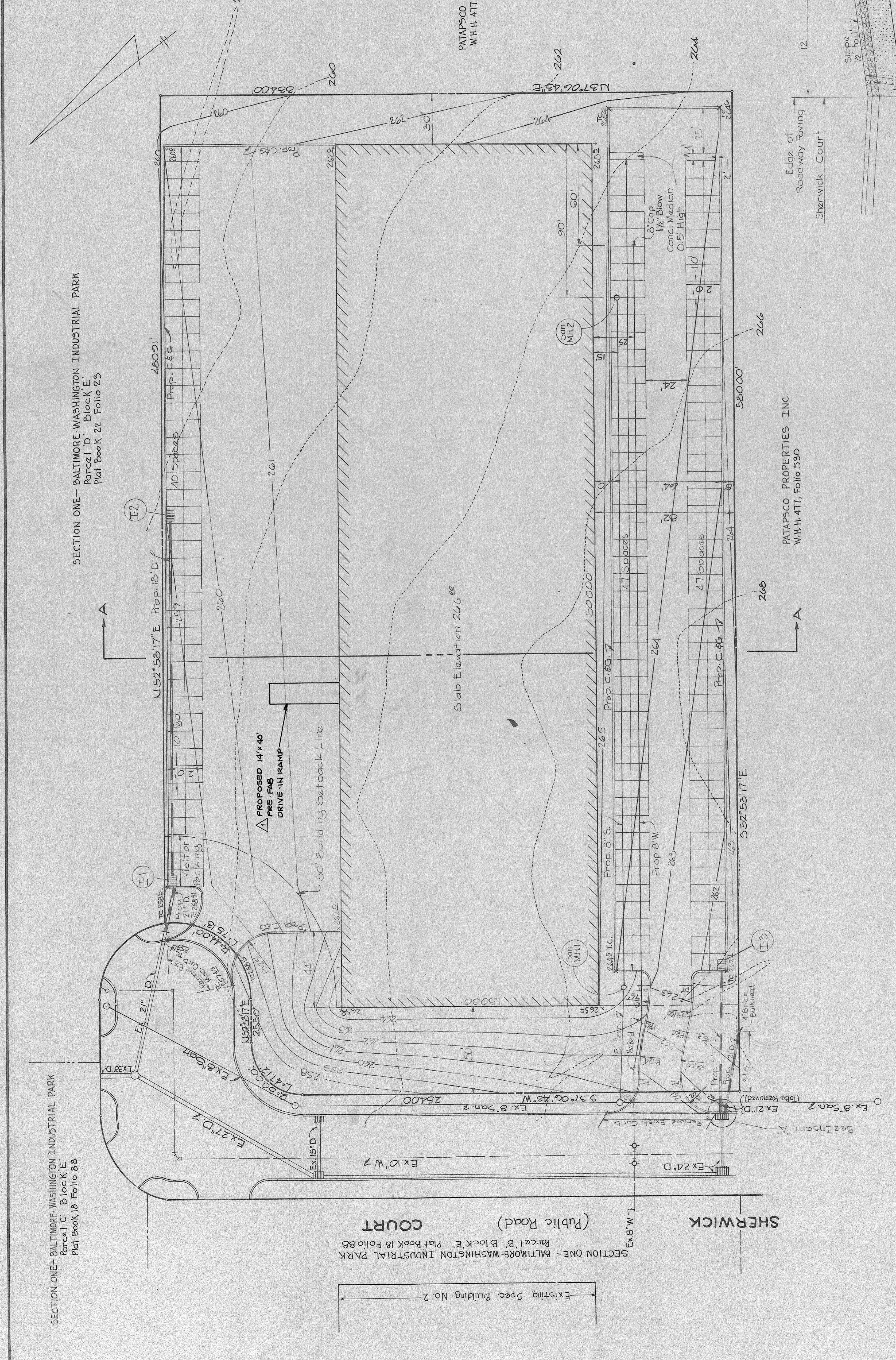


- GENERAL NOTES**
- 1) All disturbed areas to be Seeded in Conjunction With Howard County Soil Conservation Service And Howard County Planning Commission.
  - 2) No Fences, Walls or Signs.
  - 3) Typical Raving Section:
    - Parking Areas South of Bldg.
      - 1" Bituminous Concrete
      - 2" Bituminous Concrete
      - 3" Bituminous Concrete
      - 4" Black Base (Band B-1)
      - 5" Black Base (Band B-1)
    - \* See Section C-3-A of the Howard Co. Rd. Const. Code & Sid. Spaces.
  - 4) Legend:
    - Existing Gravel
    - Proposed Gravel
    - Proposed Grubbs
  - 5) All Curbs to be Howard Co. Standard T/Combination C&G.



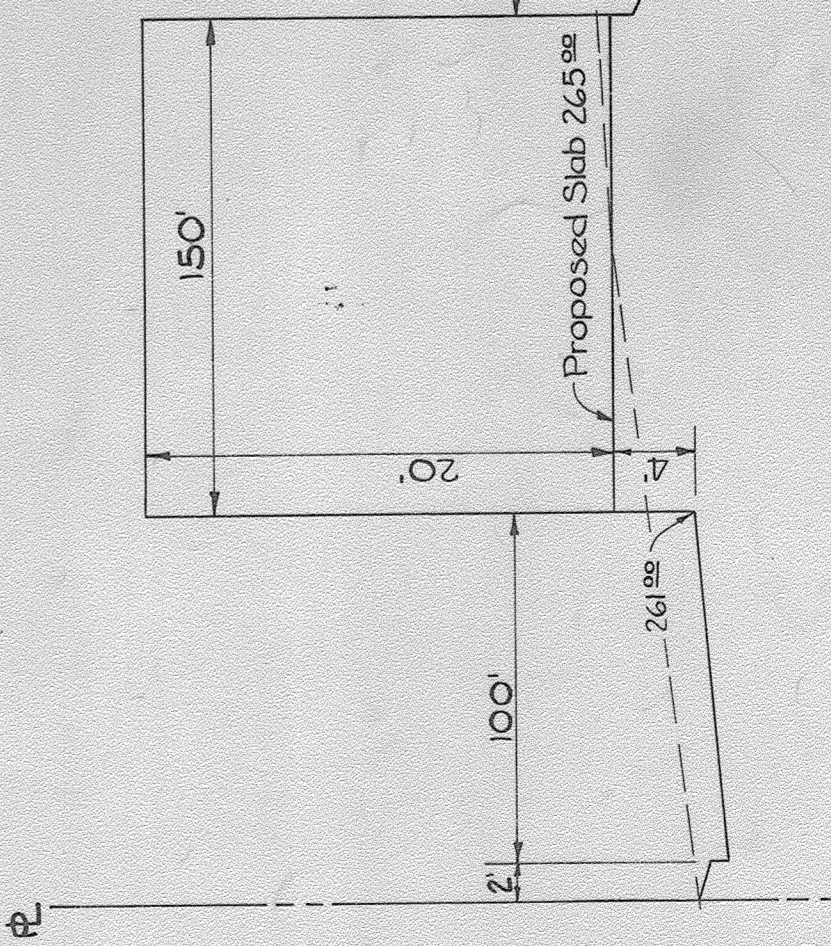
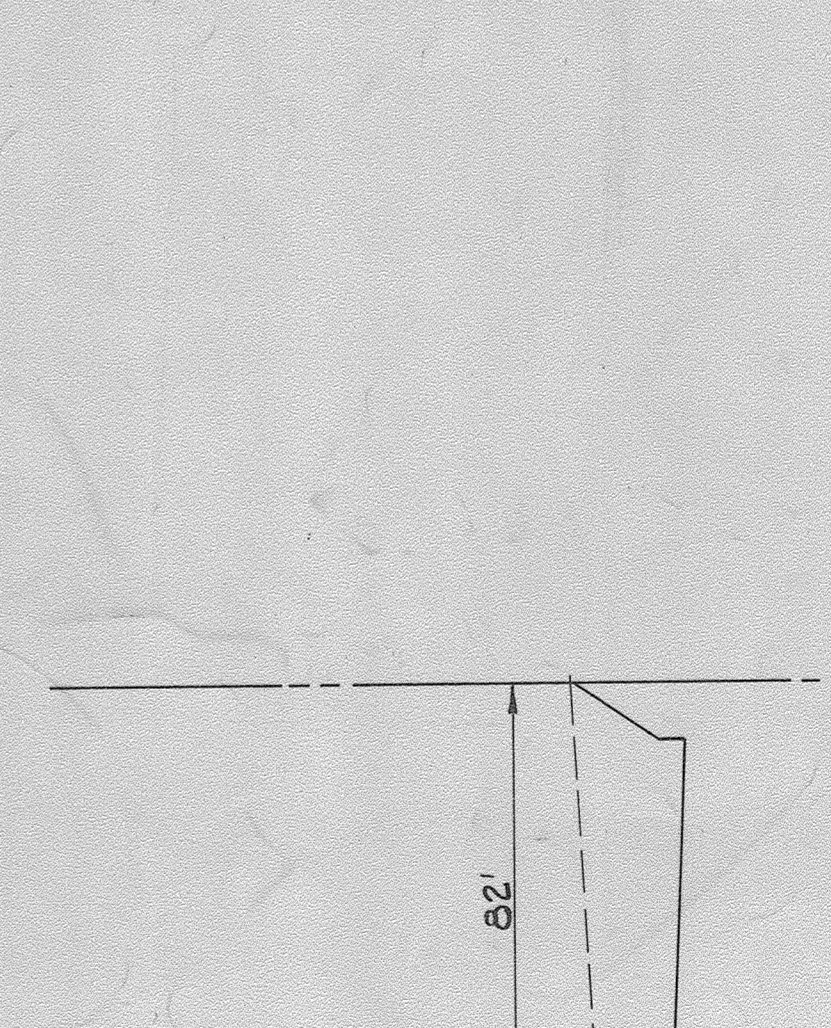
PATAPSCO PROPERTIES INC.  
W.H.H. 411, Folio 590

NUMBER	STRUCTURE TYPE	DATE	BY		
I-1	S. Comb. D-99	Page 154	253.50	251.32	251.07
I-2	S. Comb. D-99	Page 154	253.50	251.32	251.07
I-3	S. Comb. D-99	Page 154	253.50	251.32	251.07
S&M.H. 1	Standard	D-105	Page 155	262.43	251.32
S&M.H. 2	Standard	D-105	Page 155	262.43	251.32



**SITE DATA**

- 1) Total Area of Tract ..... 4.34 Ac. ±
- 2) Existing Zoning ..... M-2
- 3) Total Floor Area ..... 75000 FT<sup>2</sup>
- 4) Tax Map No. .... 48
- 5) Total Parking Spaces Provided ..... 137
  - a. Customer & Visitor Parking ..... 3
  - b. Employee Parking @ 2 Employees/Space ..... 134
  - c. Maximum No. of Employees Allowed ..... 268
- 6) Total Acres Aired ..... None @ Present
- 7) Proposed Use of Building ..... Warehouse



I CERTIFY THAT THESE DOCUMENTS WERE PREPARED OR APPROVED BY ME OR AN ENGINEER UNDER THE LAWS OF THE STATE OF MARYLAND. LICENSE NO. 18650. EXP. DATE 1/12/2020

PROFESSIONAL ENGINEER  
STATE OF MARYLAND

REVISION BY: NUS ENGINEERING INC.  
210 GREENACRES COURT  
TOWSON, MARYLAND 21286  
(410) 832-7091

Charles E. Frank 6/20/72 Date  
Reg. No. 5048

APPROVED FOR PUBLIC WATER AND PRIVATE SEWERAGE SYSTEMS, HOWARD COUNTY HEALTH DEPARTMENT

APPROVED-HOWARD COUNTY OFFICE OF PLANNING AND ZONING

APPROVED FOR PUBLIC WATER, PUBLIC SEWERAGE AND STORM DRAINAGE SYSTEMS AND ROADS HOWARD COUNTY DEPARTMENT OF PUBLIC WORKS

**SITE PLAN**  
SPEC. BLDG #5  
PARCEL E BLOCK E

**BALTIMORE-WASHINGTON INDUSTRIAL PARK**  
HOWARD CO., MD.  
ELECTION DIST. #6  
DATE: APRIL 10, 1972

OWNER & DEVELOPER  
PATAPSCO PROPERTIES INC.  
501 ST. PAUL STREET  
BALTIMORE, MARYLAND 21202

GEORGE WILLIAM STEPHENS, JR.  
AND ASSOCIATES, INC.  
303 ALLEN ST.  
TOWSON 4, MARYLAND

APPROVED  
DIVISION OF LAND DEVELOPMENT  
AND TRANSPORTATION PLANNING  
HOWARD COUNTY, MARYLAND  
DATE AUG 22 1972

528-72-127