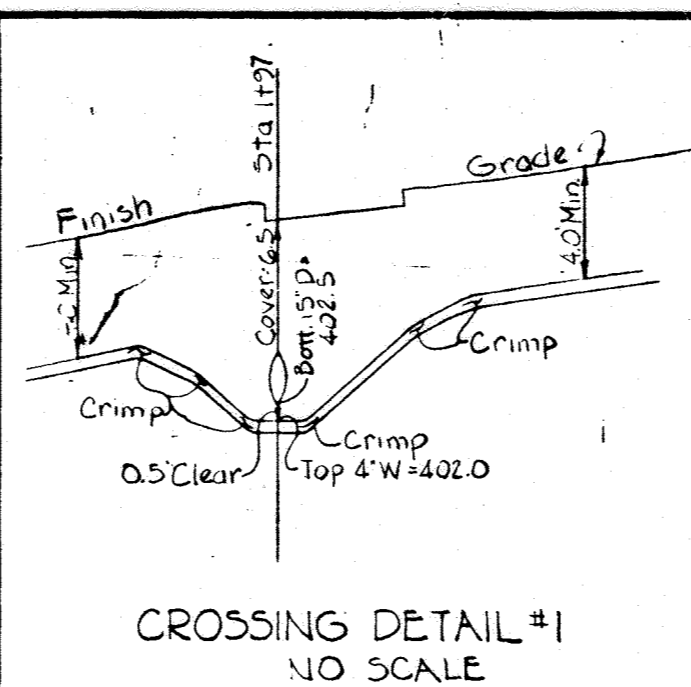
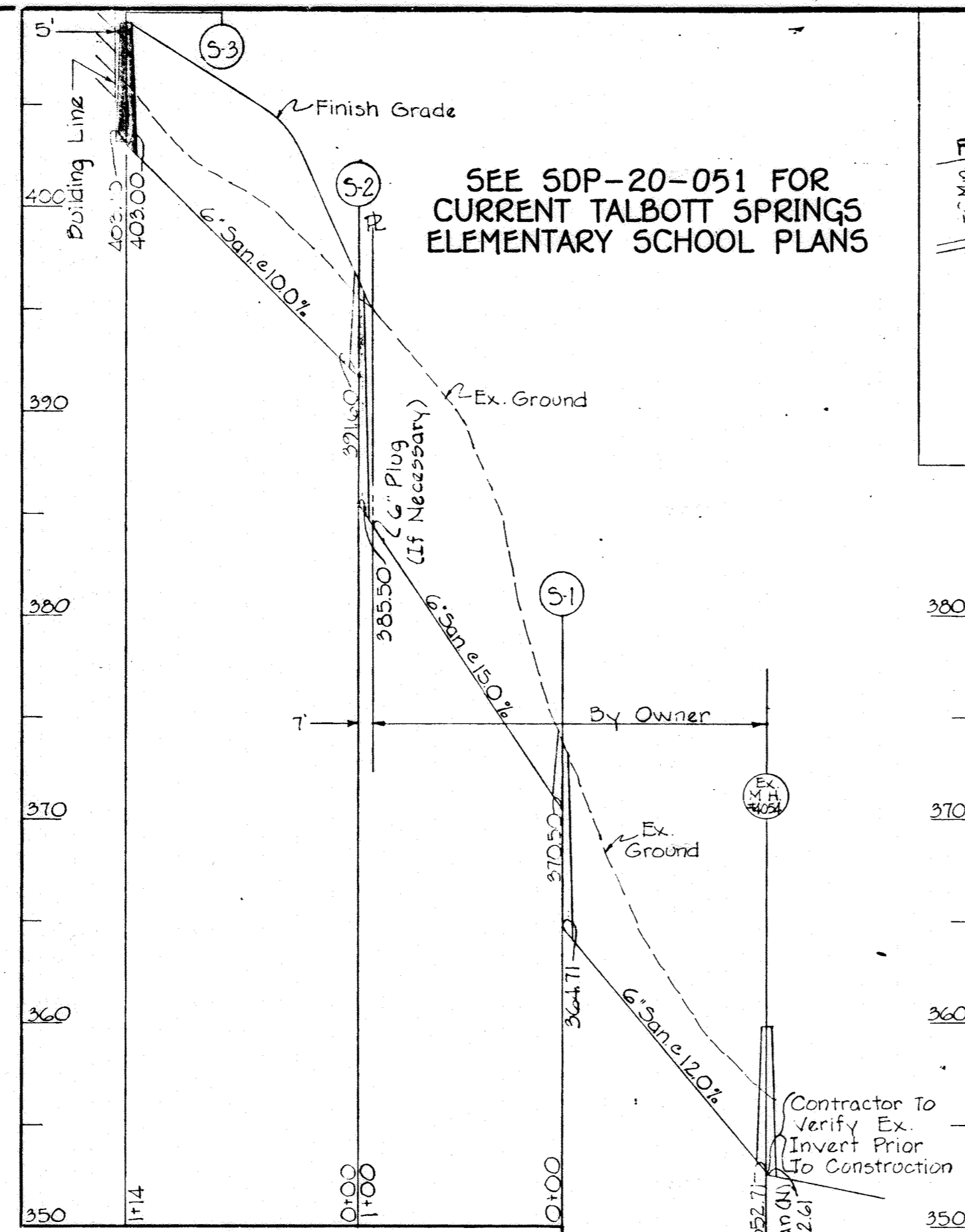
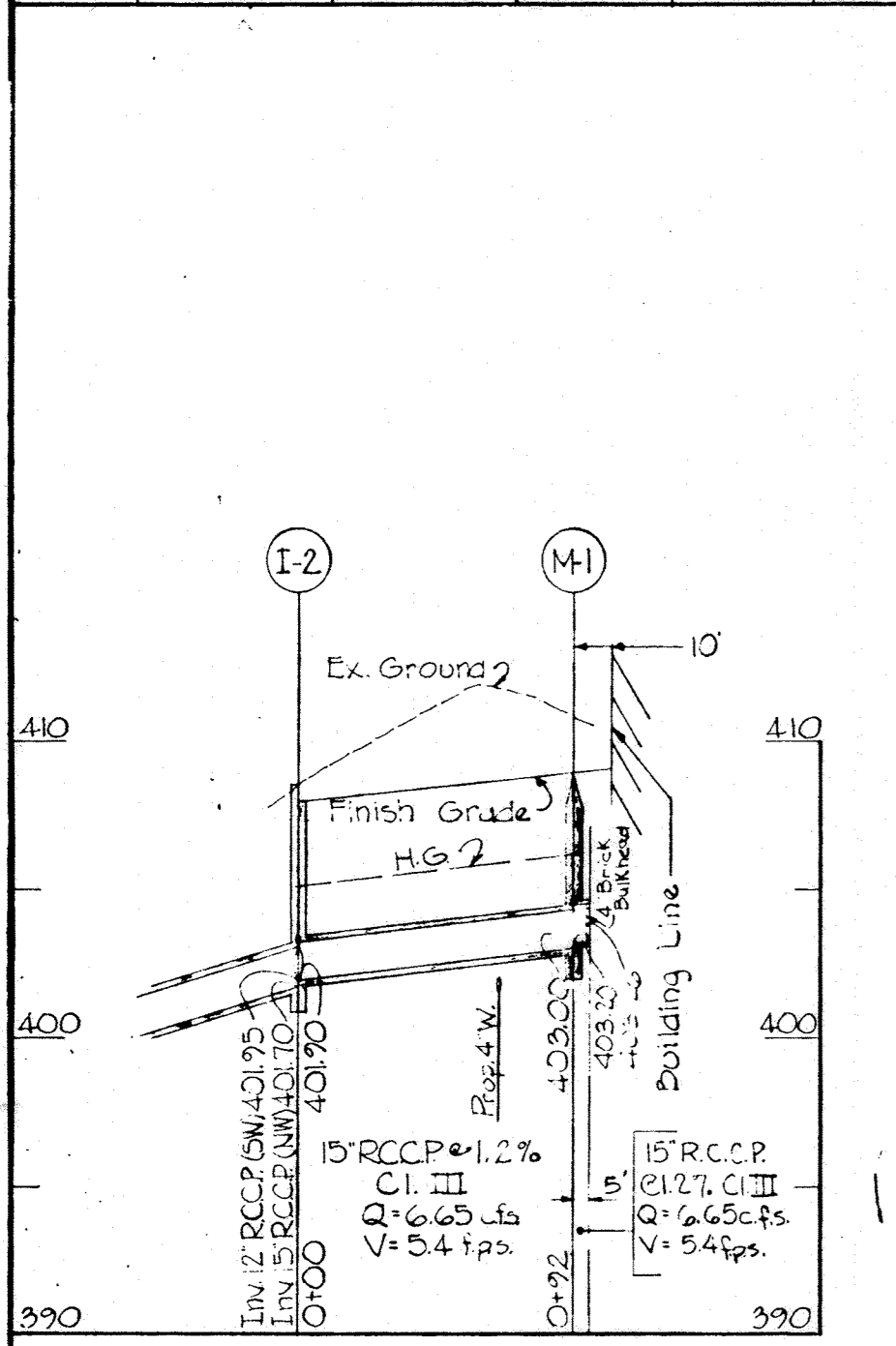


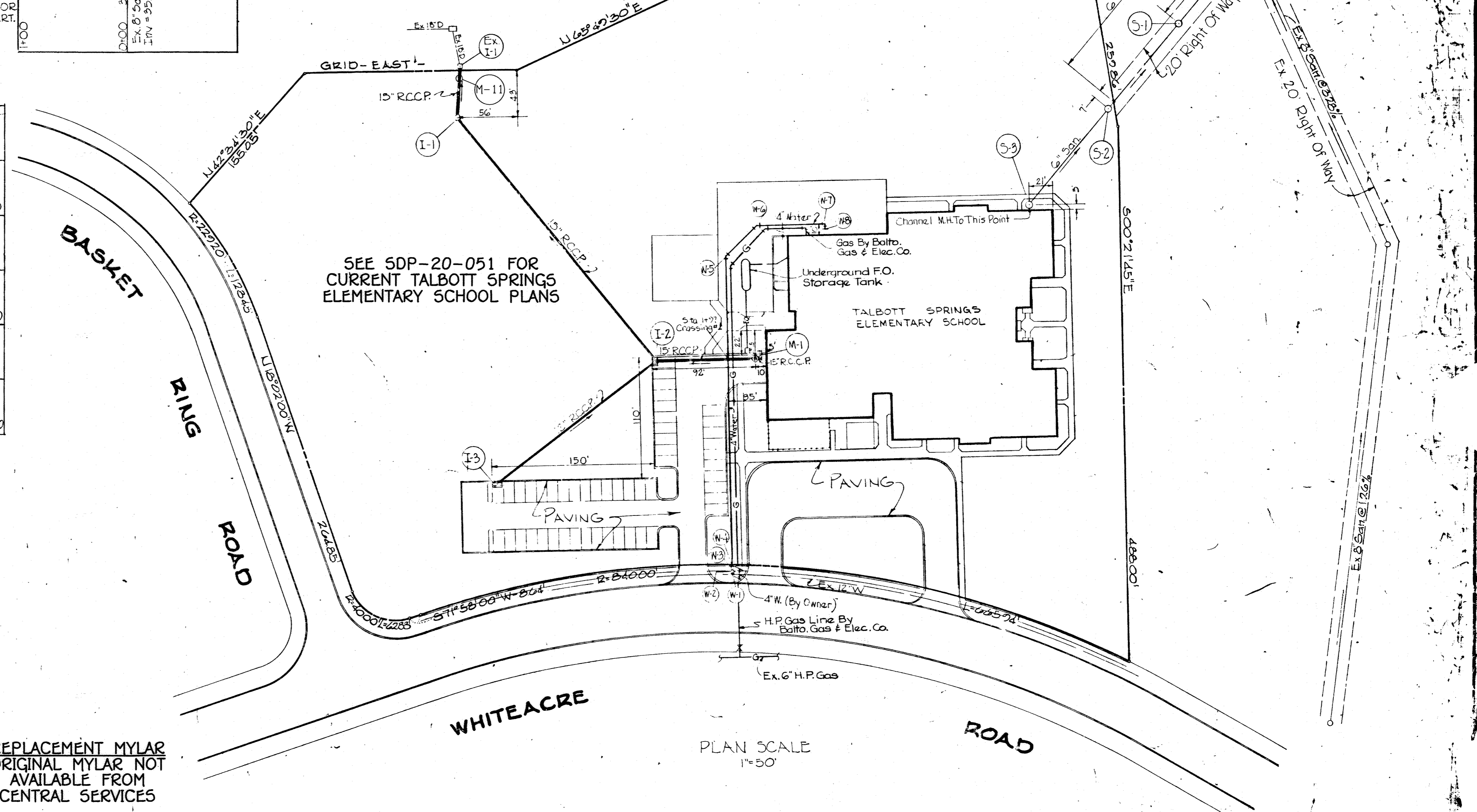
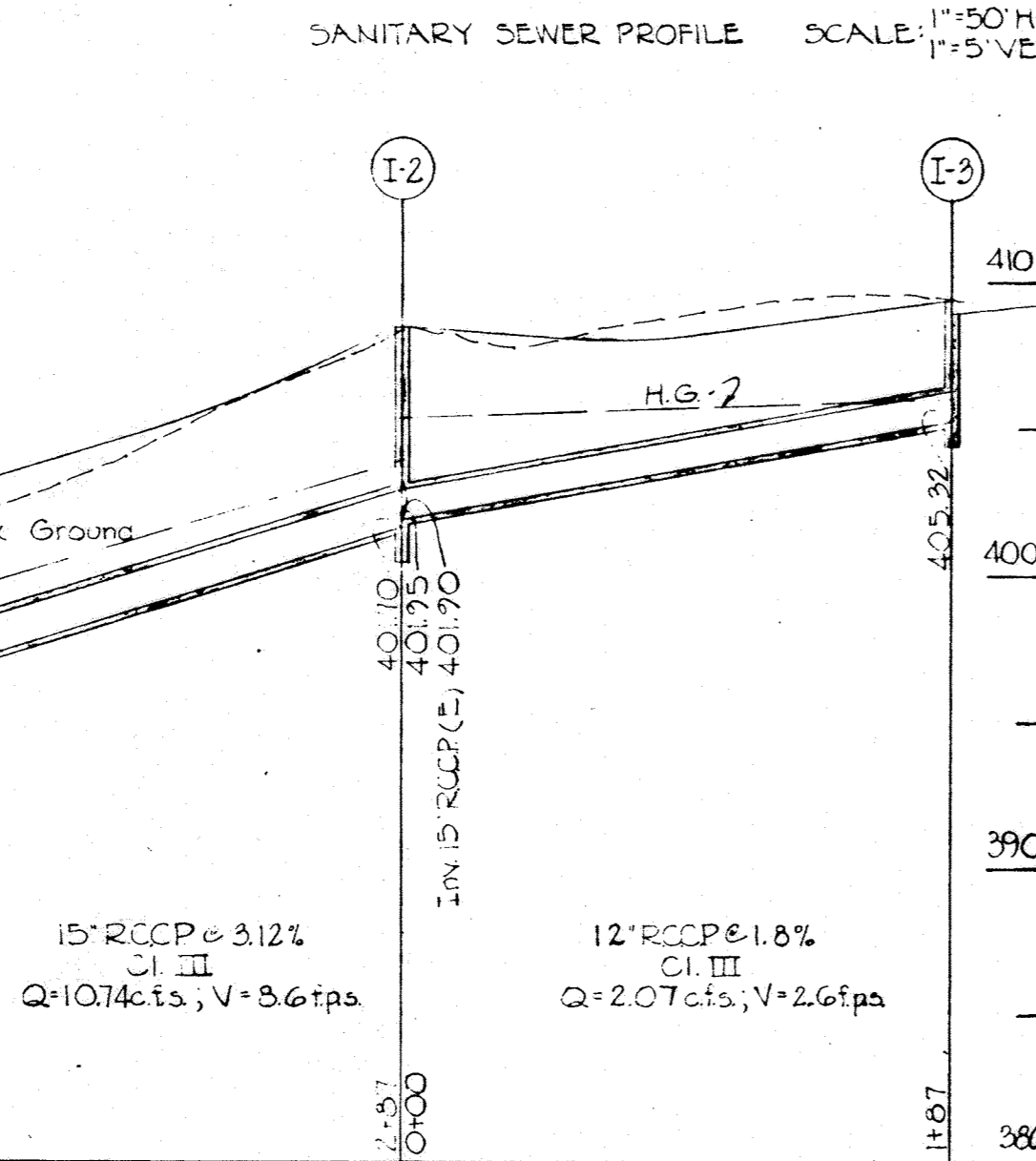
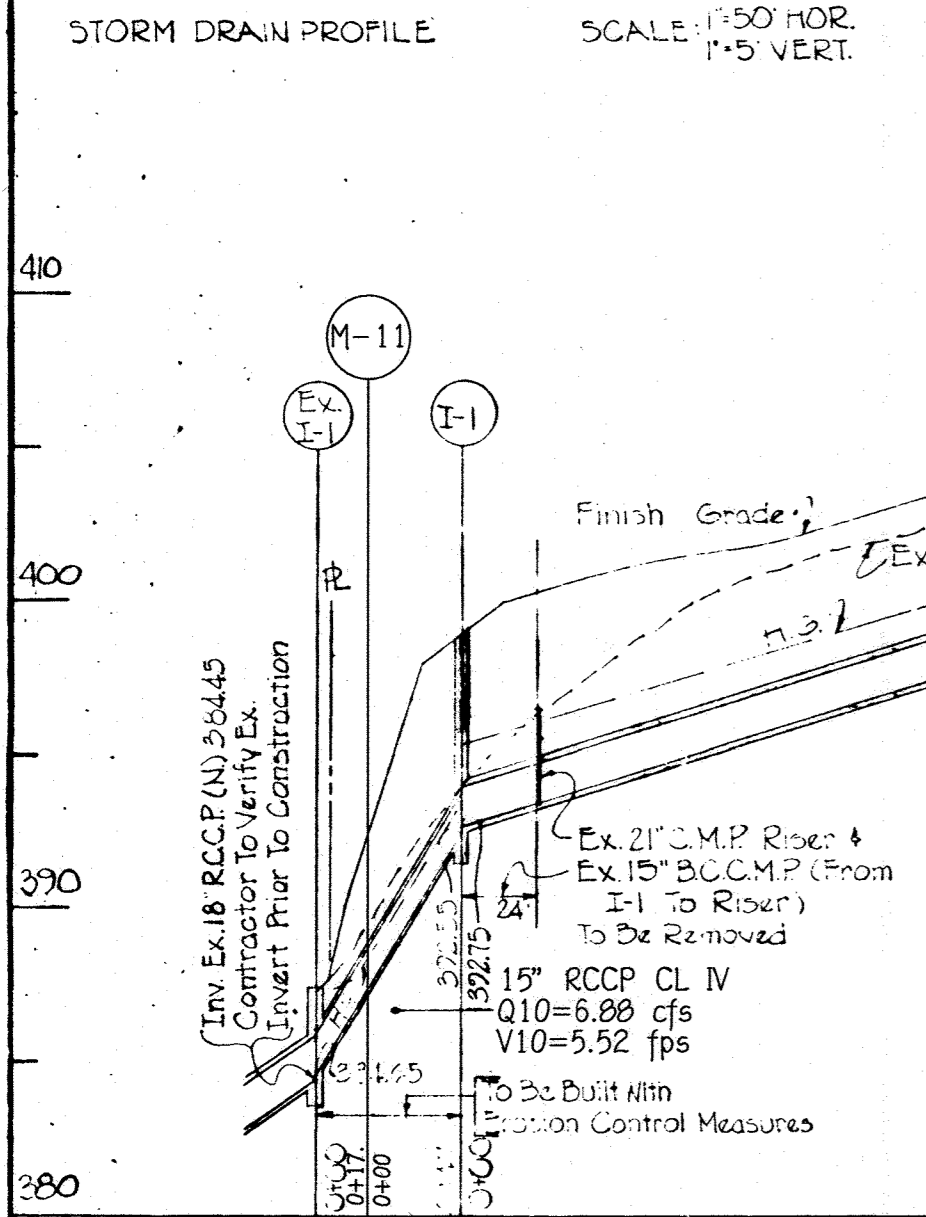
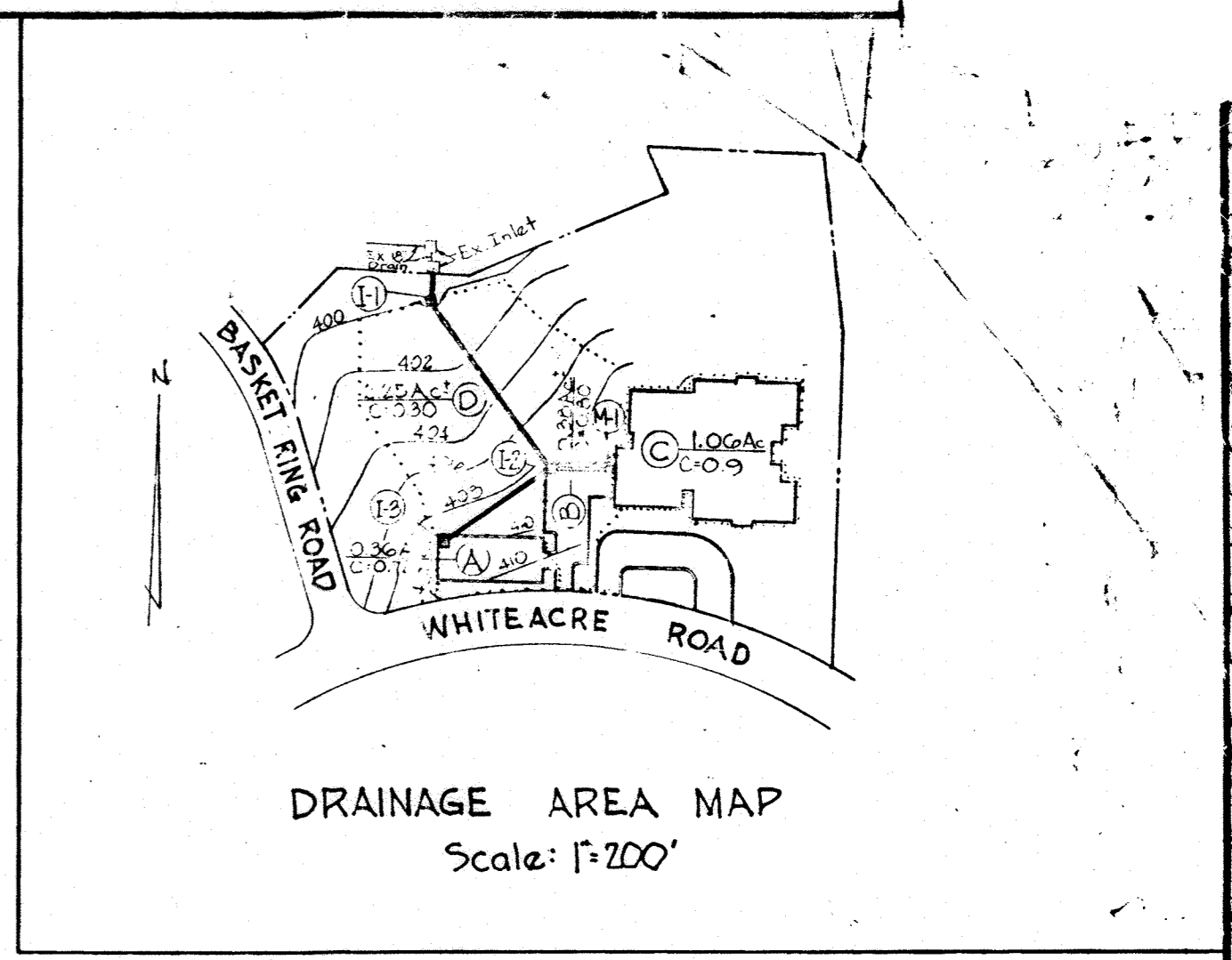




STRUCTURE		SCHEDULE				
NO.	TYPE	STD. HOW. CO. DET.	INVERT	OUT	TOP ELEV.	Q.
S-1	8" DROP MH	S-6	364.71	373.50		
S-2	8" DROP MH	S-6	385.50	376.50		
S-3	STD. LINE MH	S-2	403.00	408.75		
M-1	STD. MANHOLE	D-103	403.00	407.00		
I-1	"	D-4-C	392.55	397.00	4.01	
I-2	"	D-97	401.70	408.50	2.37	
I-3	"	D-97	403.32	407.50	2.03	



- GENERAL NOTES**
- Contractor Shall Verify All Information Indicated on This Plan To His Complete Satisfaction.
  - See Site Plan (DWG. #A1B) For Grading And Dimensions Locating Drives, Building, Etc.
  - All Storm Drains Shall Be Constructed In Accordance With Howard County Standard Details And Specifications, Dated November 27, 1962, Revised August 1968, Or Latest Revision.
  - All Water And Sanitary Sewer Shall Be Constructed In Accordance With The Standard Specifications And Details For Water Mains And Sanitary Sewers, Howard County, Maryland, Department Of Public Works, As Adopted March 2, 1970 And Any Subsequent Addendum Thereto.
  - All Drains To Be Constructed Under Pre-Site Contract.
  - See Drawing No. A1B For All Paving And Curbing Details.



SEE SDP-20-051 FOR CURRENT TALBOTT SPRINGS ELEMENTARY SCHOOL PLANS

4" WATER CONSTRUCTION CHART						
Station	Structure#	Description	Std. How. Co. Det.	Finish Grd.	Ex. Ground	Top Water*
0+00	W-1	12" x 4" Tee	W-7	411.20	411.2	407.2
0+02	W-2	4" Valve		411.28	411.4	407.28
0+06	W-3	4" Domestic Meter		411.45	411.7	407.45
0+09	W-4	4" Elbows & Spacer Or 4" Cap (If Necessary)	W-8	411.58	411.7	407.58
2+90	W-5	1/2 Bend	W-8	407.70	407.1	403.70
3+75	W-6	1/2 Bend	W-8	408.30	405.5	404.30
3+93	W-7	4" Tee	W-8	408.70	406.0	404.70
3+98	W-8	4" Elbows & Spacer Or 4" Cap (If Necessary)	W-8	408.70	406.0	404.70

\* All Stations Are Scaled Along & Proposed Water.  
 † 4" Water To Have A Minimum Ultimate Cover, To Top of Pipe, Of 4.0'

REPLACEMENT MYLAR ORIGINAL MYLAR NOT AVAILABLE FROM CENTRAL SERVICES

DATE	REVISIONS
5/25/22	REVISED STORM DRAINS NEAR OUTFALL AND NOTED SEE SDP-20-051 FOR CURRENT SCHOOLS

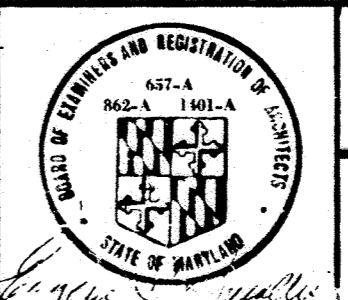
ENGINEERS  
 GEORGE WILLIAM STEPHENS JR. ASSOCIATES INC.  
 205 A. Allingway Ave.  
 Towson 4, Maryland

Charles E. Lick 6/5/22  
 Associate Reg. No. 5018 Date

# TALBOTT SPRINGS ELEMENTARY SCHOOL

COLUMBIA MARYLAND

FOR THE BOARD OF EDUCATION OF HOWARD COUNTY CLARKSVILLE, MARYLAND



UTILITY PLAN  
 P56-18-007.73.CE

SMEALLIE, ORRICK AND JANNA, LTD.  
 ARCHITECTS PLANNERS  
 5820 FORK ROAD BALTIMORE MD 21212

DATE AUG. 31, 1972  
 JOB NO. 71-268