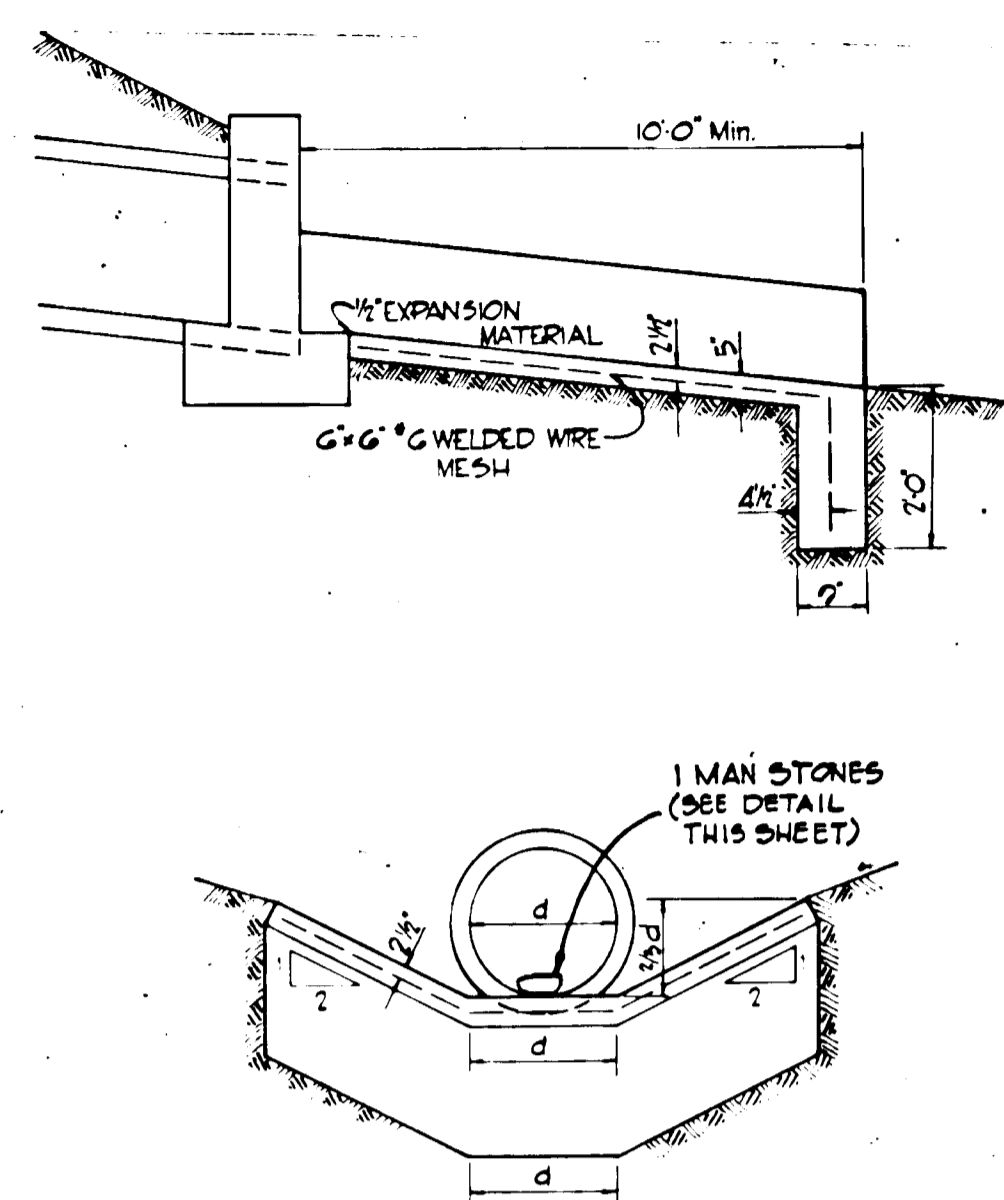
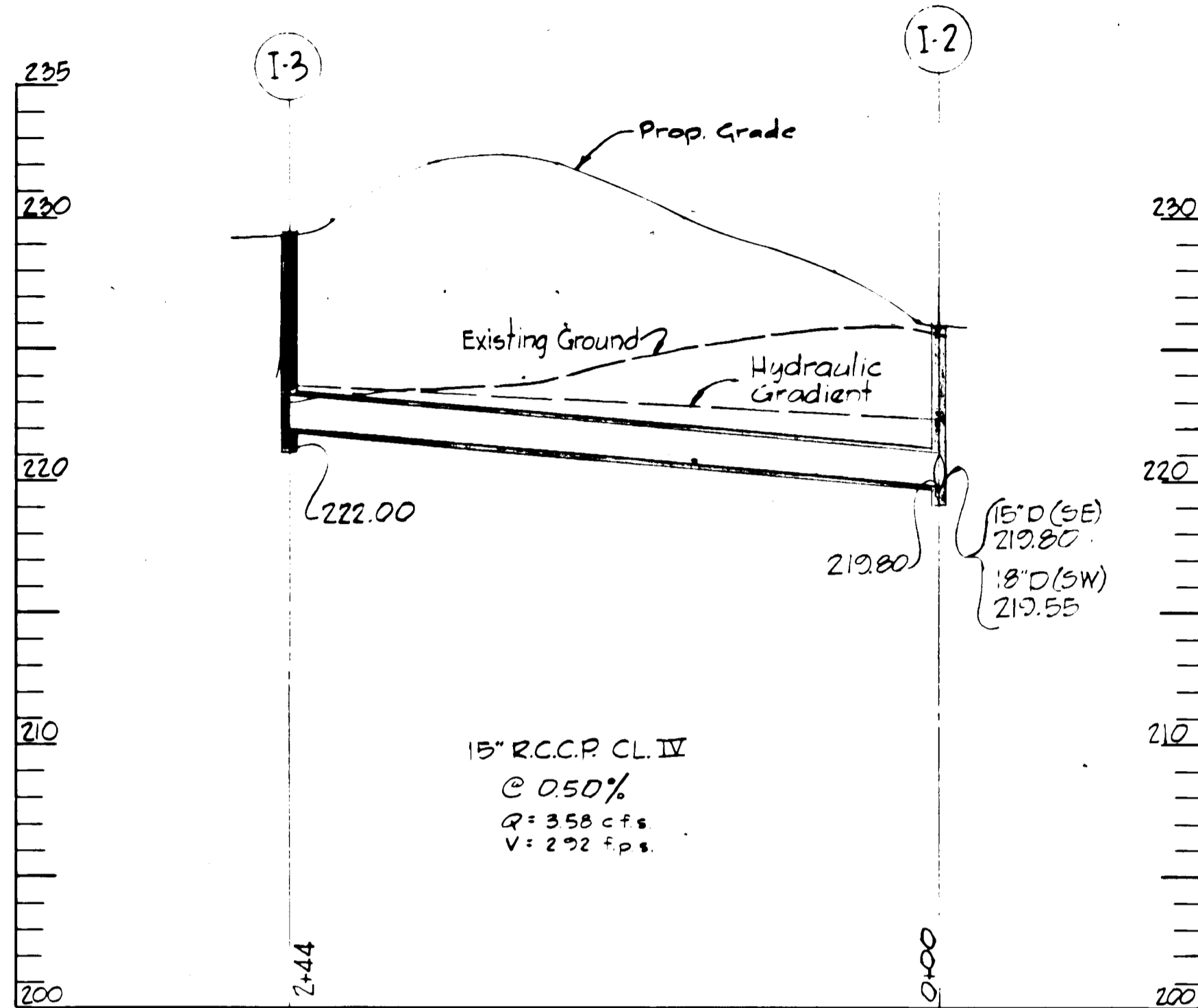
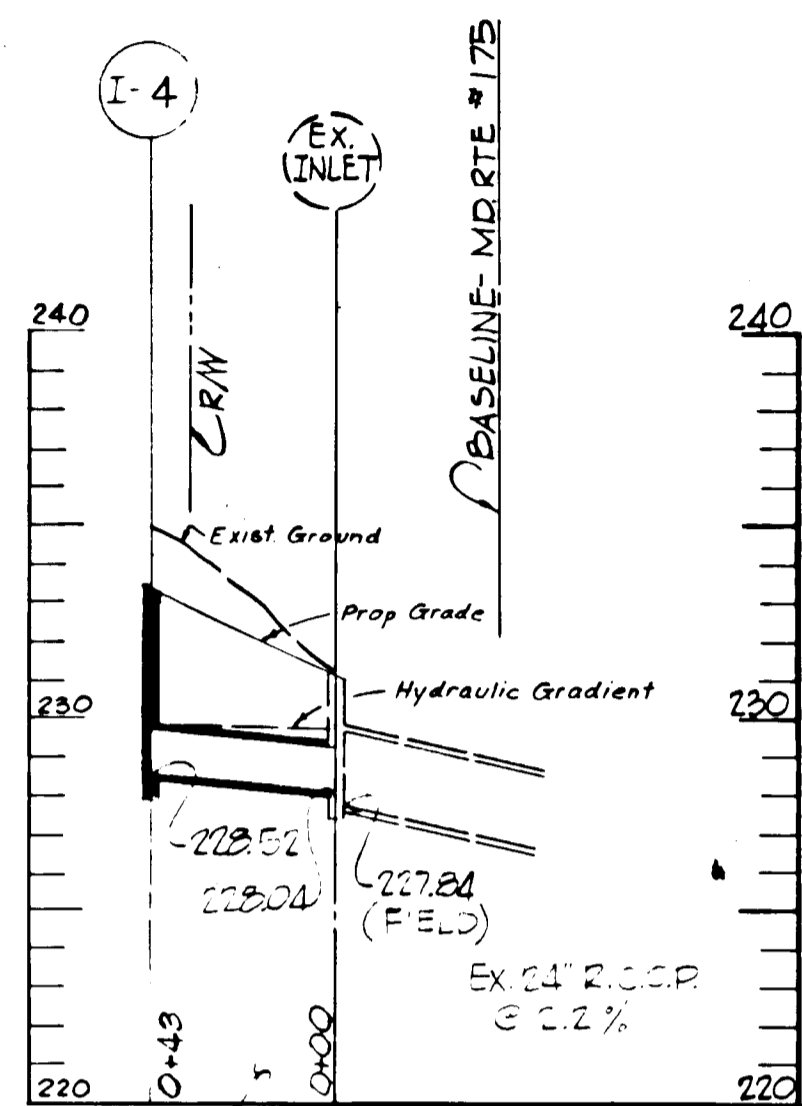
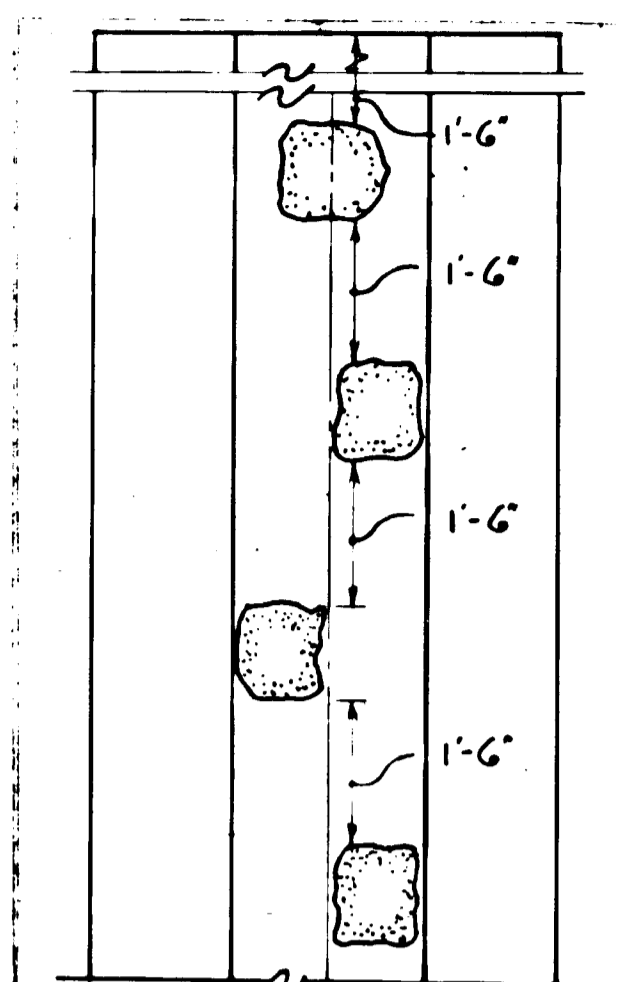


STORM DRAINAGE STRUCTURE SCHEDULE

NO.	TYPE	LOCATION	INV. IN	INV. OUT	TOP ELEV.	REMARKS
-1	A-4 INLET	SEE PLAN	222.06	225.5	225.5	HO, CO, STD, Dwg. 64A
-2	A-5 INLET	" "	219.55	225.8	225.8	" " " " " "
-3	A-5 INLET	" "	221.05	229.5	229.5	" " " " " "
-4	A-5 INLET	" "	228.47	233.5	233.5	" " " " " "
M-1	ST'D. MANHOLE	SEE PLAN	203.45	203.20	209.20	HO, CO, ST'D. D-103
E-1	ST'D. "C" WALL			194.51		HO, CO, ST'D. D-52

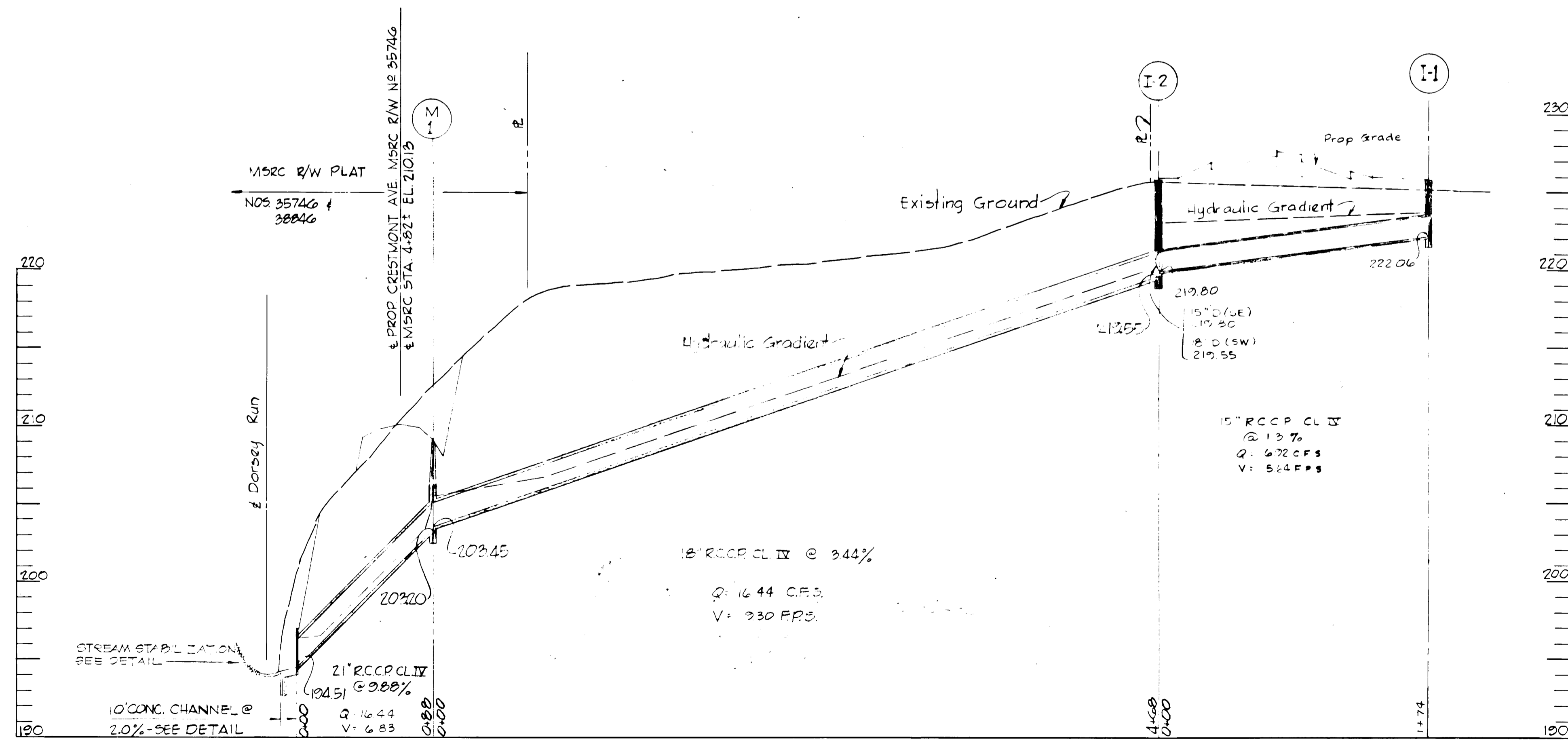


TYPICAL CONCRETE CHANNEL AND CUTOFF WALL
NO SCALE

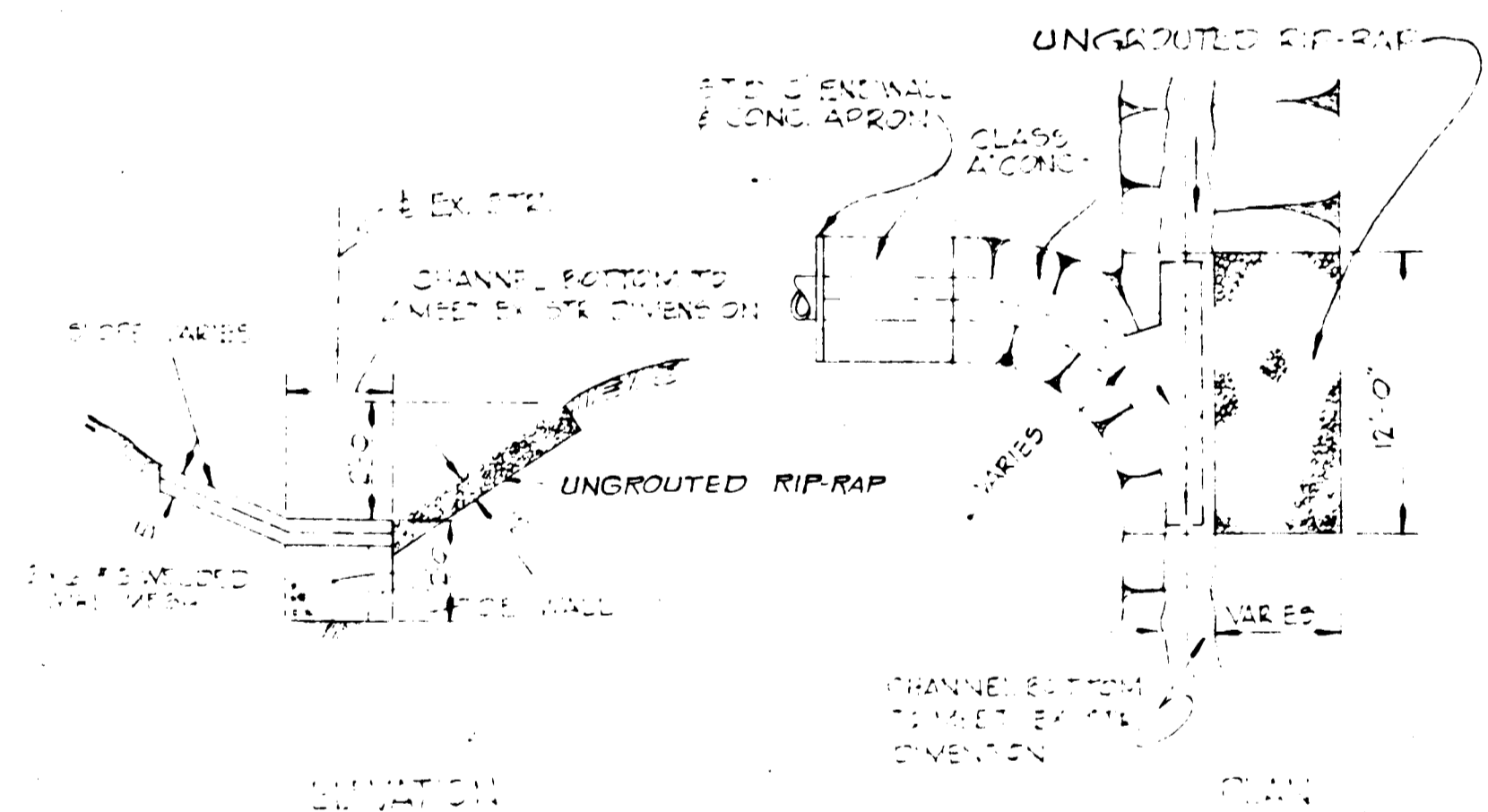


VELOCITY CHECK DETAIL
NO SCALE

15" RCCP CL. III
@ 0.12 %
Q: 2.80 CFS
V: 2.22 FPS



PROFILES
Scale: Vert. 1" = 5'
Horiz. 1" = 50'



DETAILS OF STRUCTURE
SCALE

APPROVED: For Public Water and Public Sewerage Systems, Howard County Health Department
[Signature] Date: 5-20-73
County Health Officer

APPROVED: Howard County Office of Planning and Zoning
[Signature] Date: 5-31-73
Planning Director

APPROVED: For Public Water, Public Sewerage and Storm Drainage Systems and Roads, Howard County Dept of Public Works
[Signature] Date: 5-25-73
Director

[Signature] Date: 5-25-73
Chief, Bureau of Highways

APPROVED
DIVISION OF LAND DEVELOPMENT AND TRANSPORTATION PLANNING
HOWARD COUNTY, MARYLAND
DATE: 4/27/73

Rev Date	Rev No	Revision Description

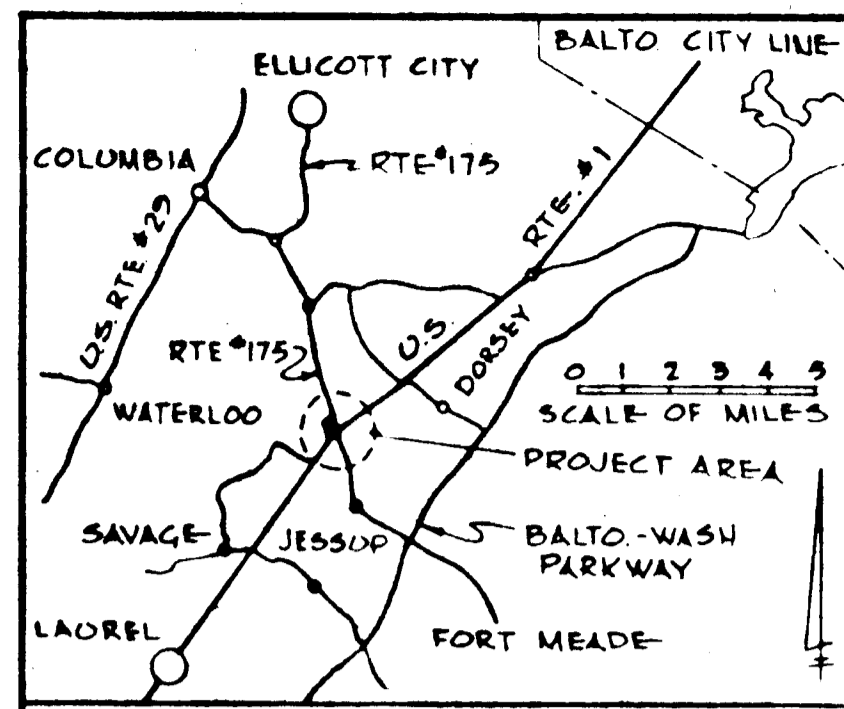
RICHARD P. BROWNE ASSOCIATES
Columbia, Maryland

ENGINEERS PLANNERS ARCHITECTS
Wayne, New Jersey

HOLIDAY INN
STORM DRAIN PROFILES AND DETAILS
6th Election District, Howard Co., Md
Parcel 154 Tax Map 45

Des By EC	Scale GS	Dwg No 2 of 5
Drn By	Date Apr 27, 1973	Proj No 3314
Chk By	Approved	

F. Denis Light Reg. No. 7617 DATE: 4/27/73



Note:
Final grading shall be in accordance with site plan See sheet 1 of 5. As each phase of development is being constructed the remaining phases shall remain graded as shown on this plan. Phases are numbered for reference only and are not intended to influence construction methods.

SEDIMENT & SOIL EROSION CONTROL NOTES

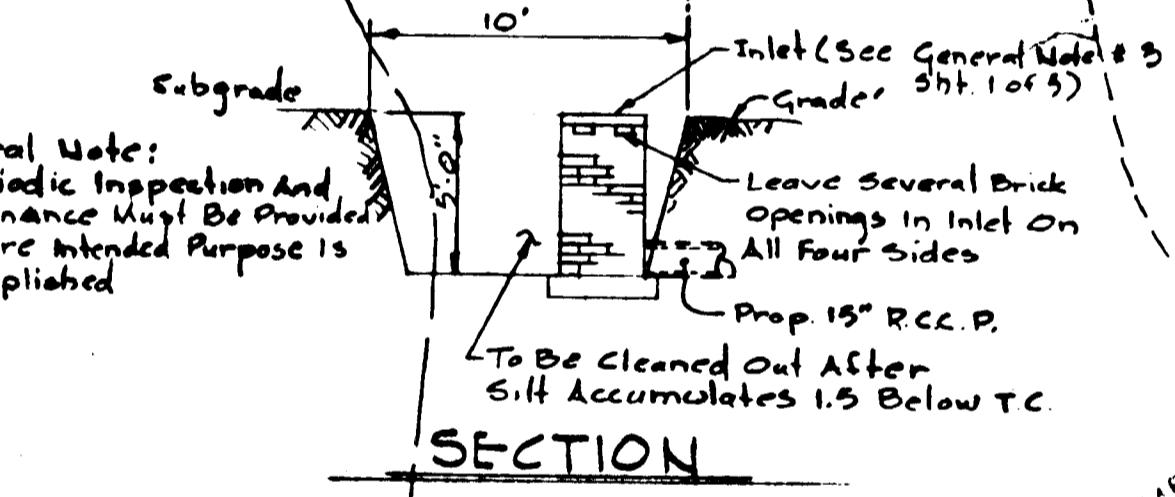
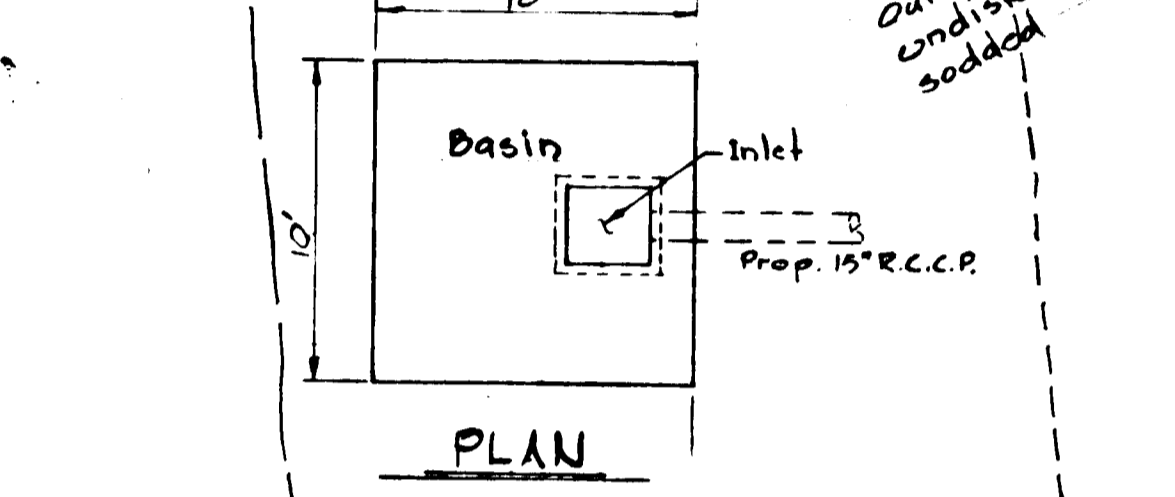
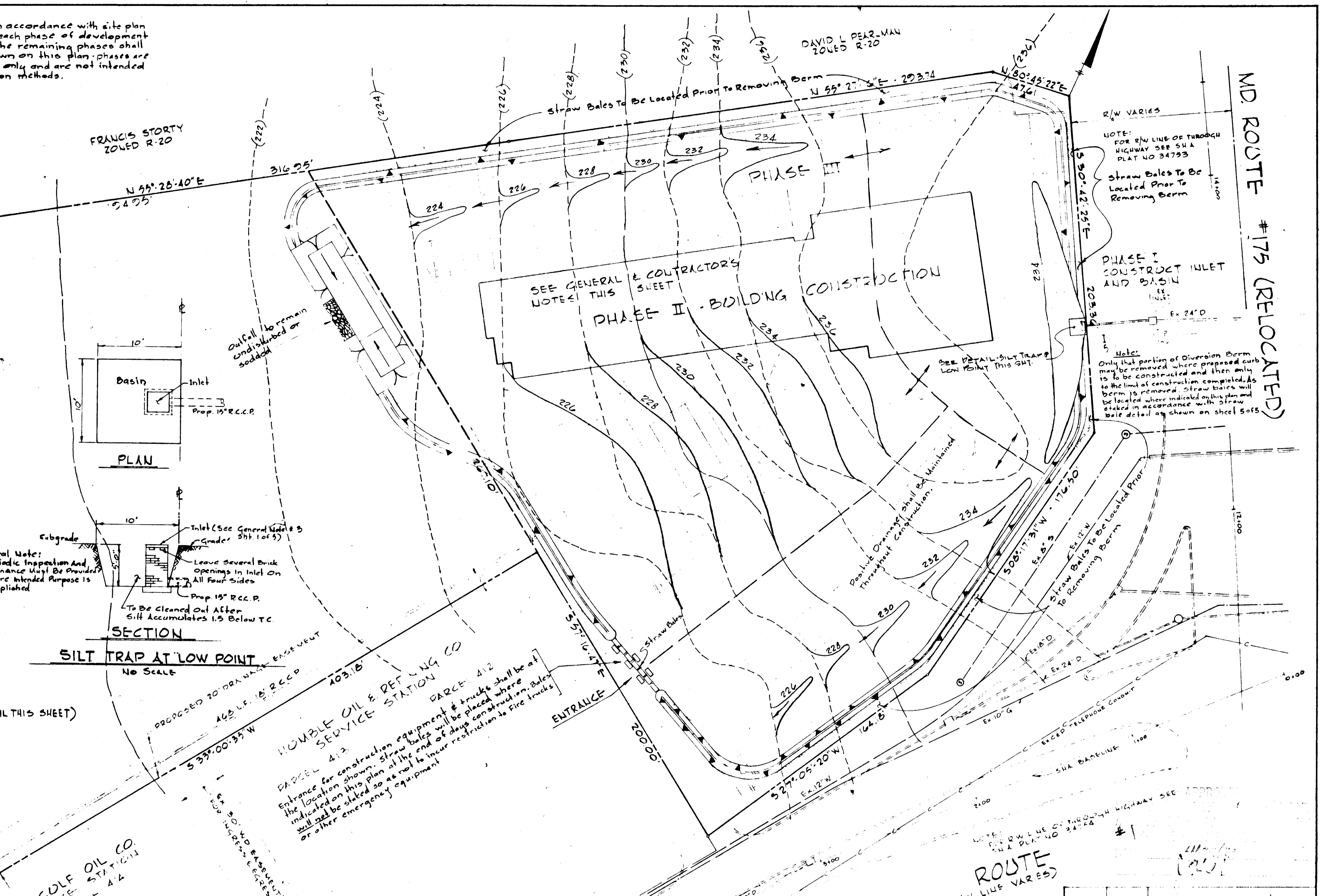
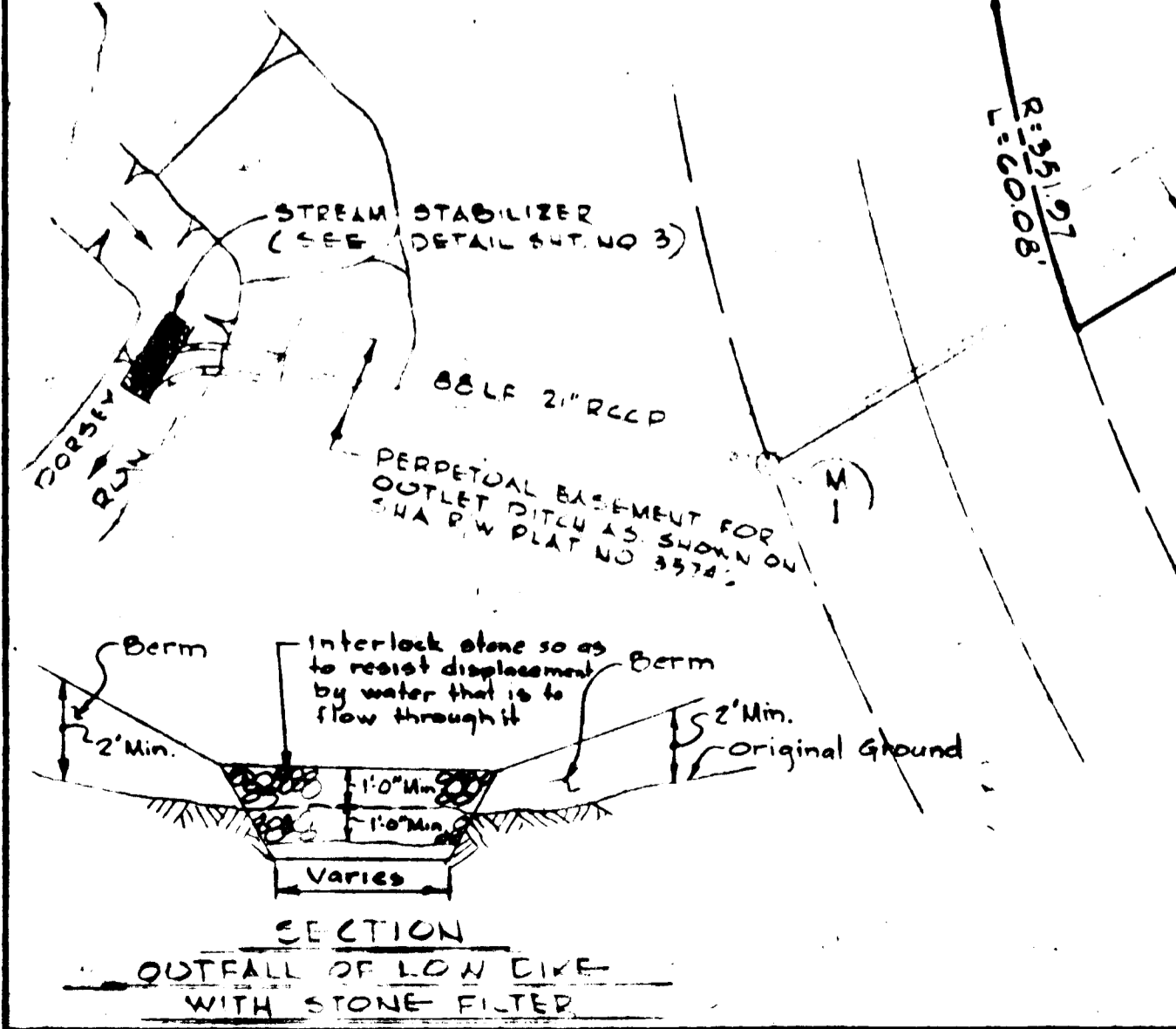
- All Sediment control measures to be adjusted to meet field conditions at time of construction and to be constructed prior to any grading or disturbance of existing surface material.
- All sediment measures shall be undertaken in strict accordance with the approved plans and the criteria and specifications approved by the Howard County Soils Conservation District.
- All seeding on sediment control facilities to be done in accordance with the Howard County Soils Conservation District.
- Periodic inspection and maintenance of all sediment control structures must be provided to insure the intended purpose is accomplished.
- Contractor installing the above shall obtain and follow the standards and specifications for soil erosion in urbanizing areas as distributed by the Howard County Soils Conservation District.
- All sediment control measures are to remain in place until permission for their removal has been obtained from the Howard County Soils Conservation District.
- Notify the Howard County Soils Conservation District of site prior to starting any work.
- On site inspection and maintenance of all sediment control measures, including cleaning of all sediment traps and berms, and proper establishment of all vegetation measures will be the responsibility of the Contractor or his representative on the site on a continuing day to day basis.

GENERAL NOTES

- Diversion Terraces (or Furrows) will be utilized to reduce slope lengths where possible, during land grading operations.
- Permanent vegetation will be established as rapidly as possible on all exposed faces of cuts and fills, and other areas, following grading operations.
- Temporary vegetation will be applied upon completion of rough grading on all other disturbed areas where such areas will not be built on within a period of ninety (90) days.
- Storm sewer inlets located below high silt producing areas will be protected by the use of adequate silt traps during construction.

CONTRACTOR'S NOTES (SEE LOW DIKE DETAIL THIS SHEET)

- Stone is to be "keyed" 1" min. into original ground.
- Stone is to be of irregular shape with min. wt. of 50.
- Provide vegetated outfall, either natural or sodded.
- Cleanout when silt reaches 6" below original grade.
- All construction shall be done in accordance with the Howard County Soils Conservation District.



SILT TRAP AT LOW POINT
No Scale

APPROVED: For Public Water and Public Sewerage Systems, Howard County Health Department <i>[Signature]</i> County Health Officer Date: 5-27-73	APPROVED: Howard County Office of Planning and Zoning <i>[Signature]</i> Planning Director Date: 5-27-73	APPROVED: For Public Water, Public Sewerage and Storm Drainage Systems and Roads, Howard County Dept. of Public Works <i>[Signature]</i> Director Date: 5-27-73
Chief, Div. of Land Devel. and Transport. Planning Date: 5/25/73	Chief, Bureau of Highways Date: 5/25/73	Chief, Bureau of Highways Date: 5/25/73

Certification By Registered Land Surveyor:
I hereby certify that the plan of development & the plan of silt & erosion meets requirements, standards & specializations of the Howard County soil conservation District.
[Signature]
Richard P. Browne No. 5238
Date: Apr 27, 1973

Certification By The Developer:
I hereby certify that all development and/or construction will be done according to this plan of Development & plan of silt & sediment control.
[Signature]
Date: Apr 27, 1973

Howard Soil Conservation District:
"This Development Plan is approved for soil erosion & sediment control by the Howard Soil Conservation District."
[Signature]
Date: 5/10/73

Reviewed: *[Signature]*
Date: 5/10/73

Approved: *[Signature]*
Date: 5/25/73



F. Denis Light PE NO. 7617
DATE: 4/27/73

Rev. Date	Rev. No.	Revision Description

RICHARD P. BROWNE ASSOCIATES
ENGINEERS SURVEYORS PLANNERS ARCHITECTS
PEACHTREE CITY, GEORGIA
COLUMBIA, MD WAYNE, N.J.

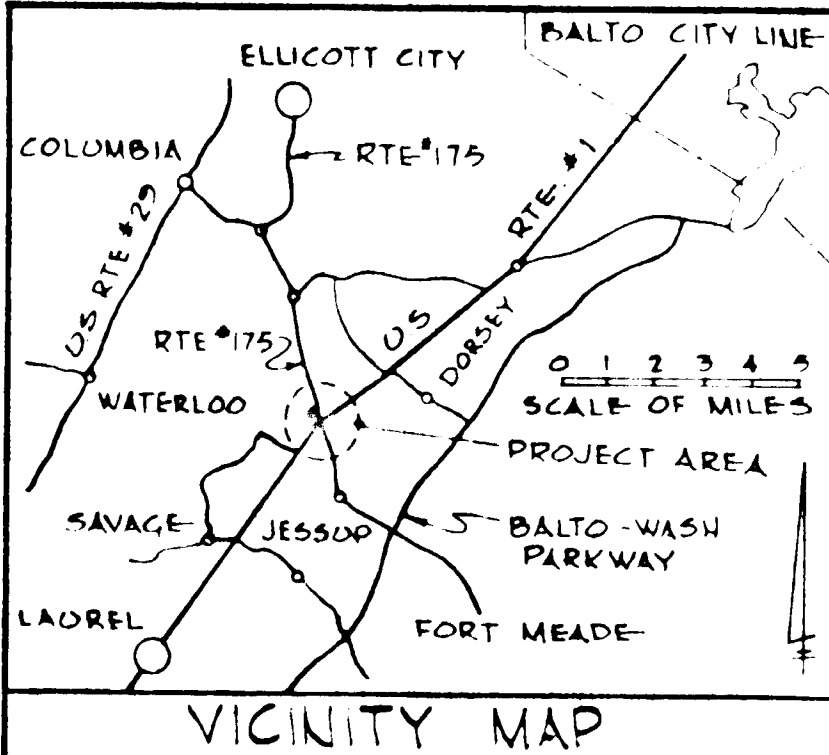
SEDIMENT CONTROL MAP
HOLIDAY INN
6th Election District, Howard Co., Md.
Parcel 134 Tax Map 43

Drawn By: E.C. Scale: 1" = 30'
Date: Apr 27, 1973
Checked By: J.J.B. Date: Apr 27, 1973
Approved By: F.D.L.

MD. ROUTE #175 (RELOCATED)

ROUTE (R/W LINE VARIES)

U.S.



APPROVED: For Public Water and Public Sewerage Systems Howard County Health Department

County Health Officer _____ Date _____

APPROVED: Howard County Office of Planning and _____ Date _____

Planning Director _____

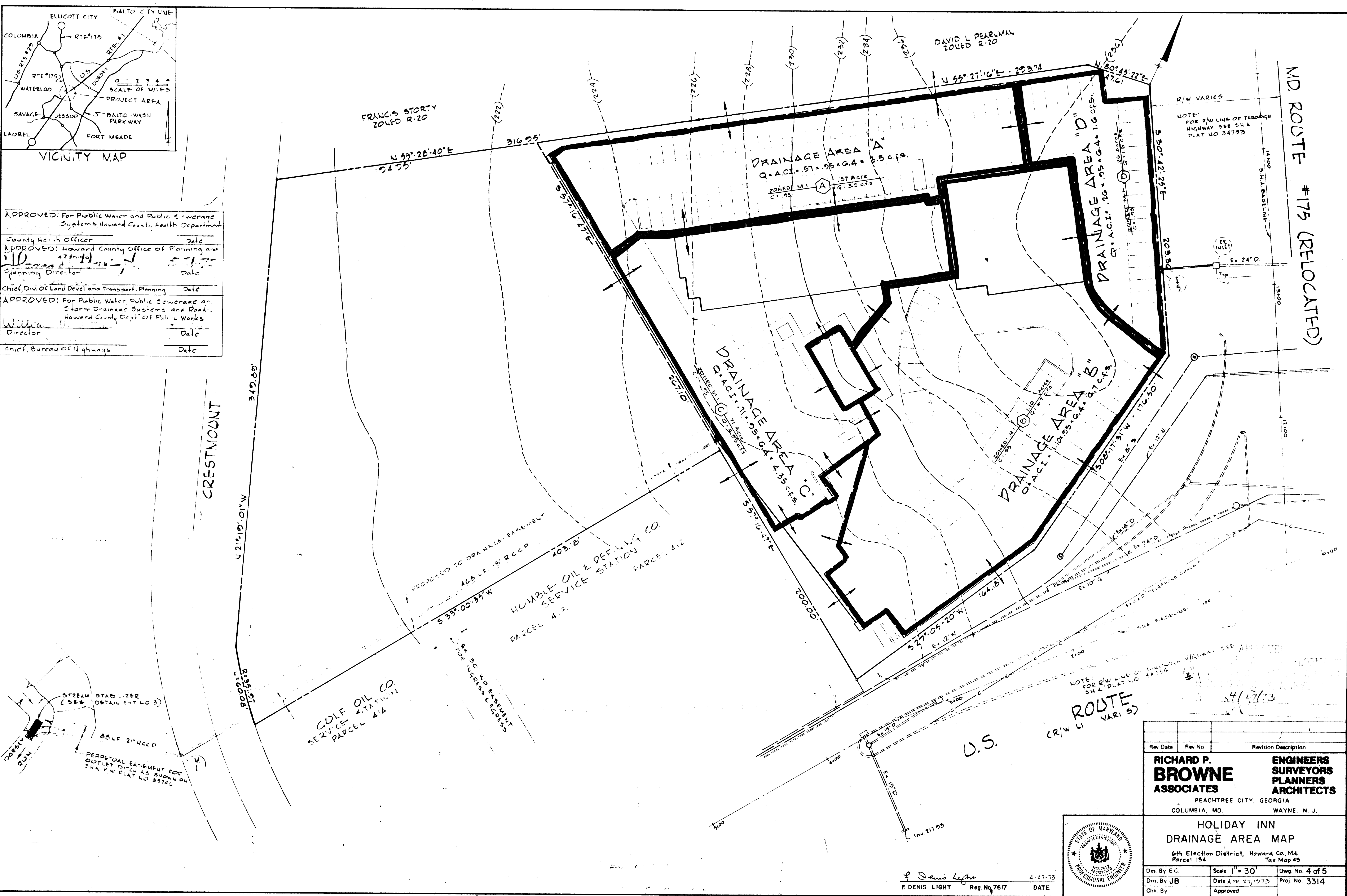
Chief, Div. of Land Devel. and Transport. Planning _____ Date _____

APPROVED: For Public Water, Public Sewerage and Storm Drainage Systems and Road _____

Howard County Dept. of Public Works _____

Director _____ Date _____

Chief, Bureau of Highways _____ Date _____



Rev. Date	Rev. No.	Revision Description

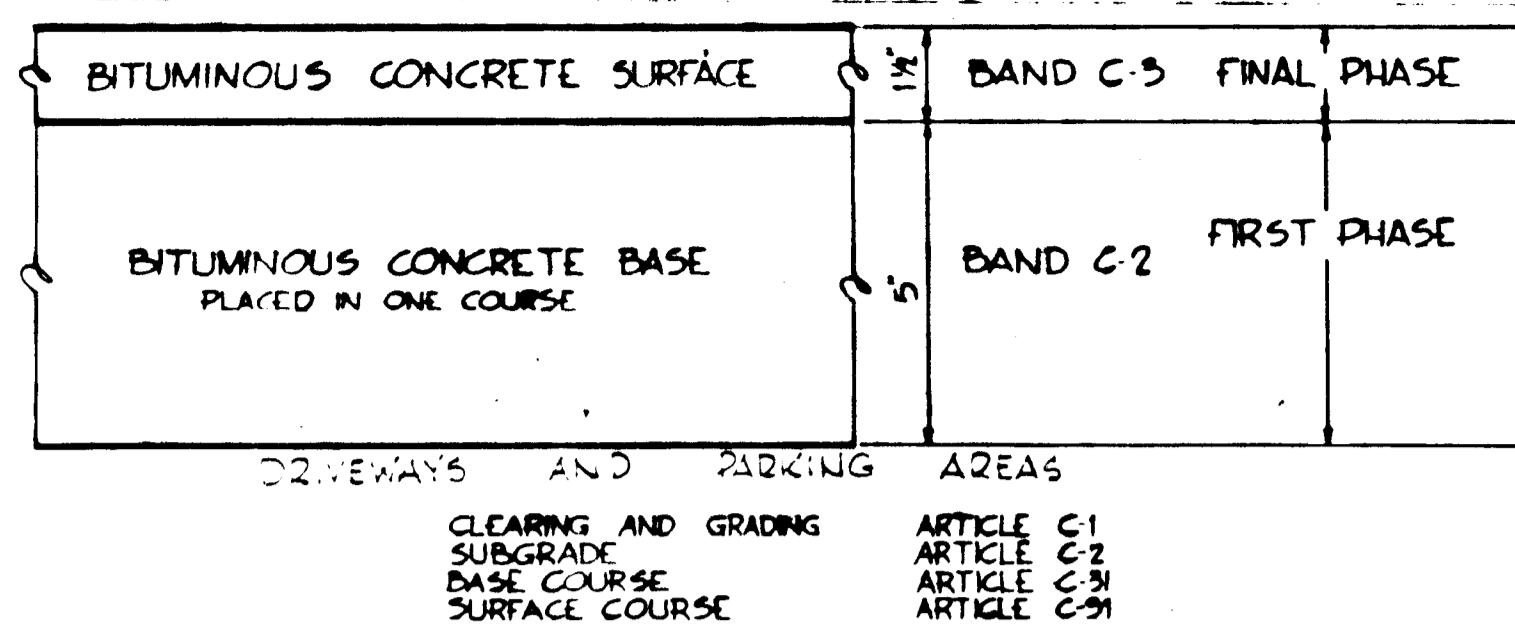
RICHARD P. BROWNE ASSOCIATES
 ENGINEERS SURVEYORS PLANNERS ARCHITECTS
 PEACHTREE CITY, GEORGIA
 COLUMBIA, MD. WAYNE, N. J.

HOLIDAY INN DRAINAGE AREA MAP
 6th Election District, Howard Co., Md.
 Parcel 154 Tax Map 49

Des. By EC	Scale 1" = 30'	Dwg. No. 4 of 5
Drn. By JB	Date APR. 27, 1973	Proj. No. 3314
Chk. By	Approved	

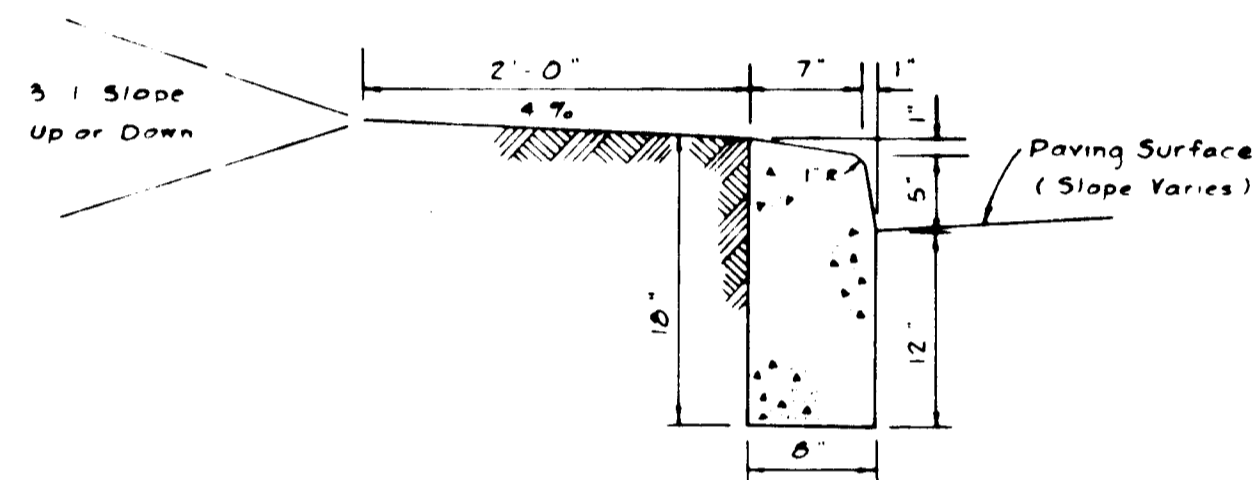


F. Denis Light 4-27-73
 F DENIS LIGHT Reg. No. 7617 DATE

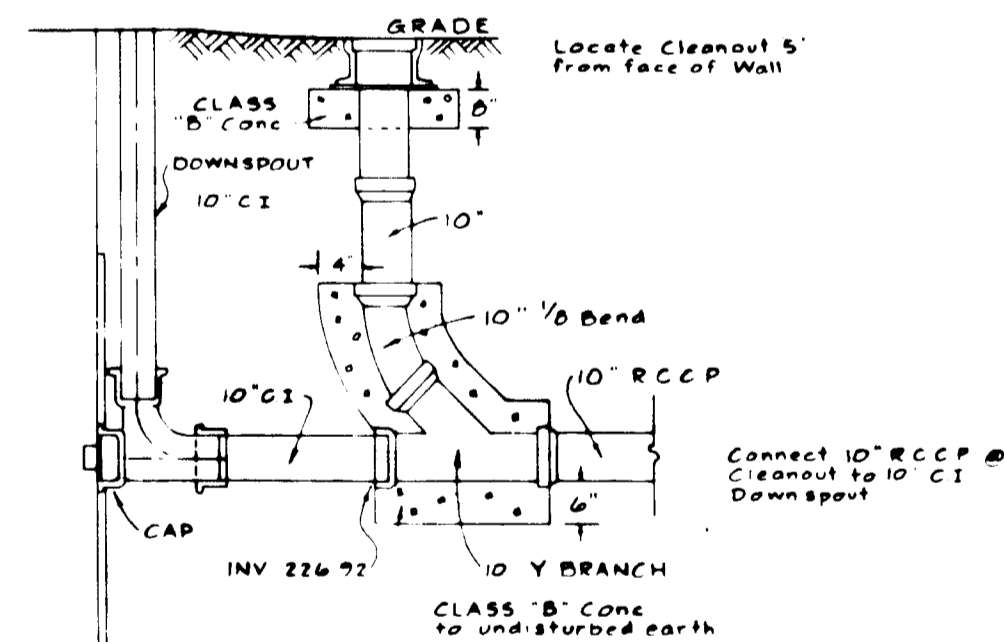


NOTE:
MATERIAL IN ALL DRIVEWAYS AND PARKING AREAS TO THE TOP 1 FOOT OF SUBGRADE SHALL BE COMPACTED TO NOT LESS THAN 92% OF THE MAXIMUM DENSITY. ALL MATERIAL IN THE TOP 1 FOOT OF SUBGRADE SHALL BE COMPACTED TO NOT LESS THAN 95% OF THE MAXIMUM DENSITY. CONSTRUCTION METHODS SHALL ADHERE TO THE HOWARD COUNTY ROAD CONSTRUCTION CODE STANDARD SPECIFICATION DIVISION 101.

6" PAVEMENT DETAIL
NO SCALE

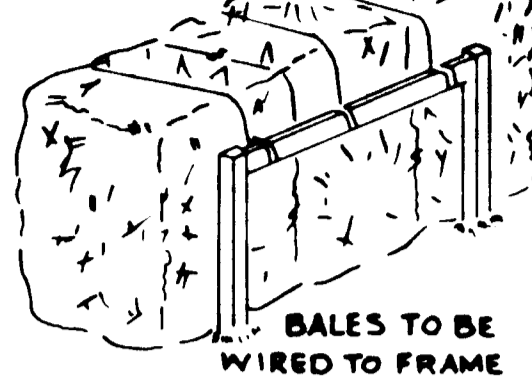


CURB DETAIL
No Scale



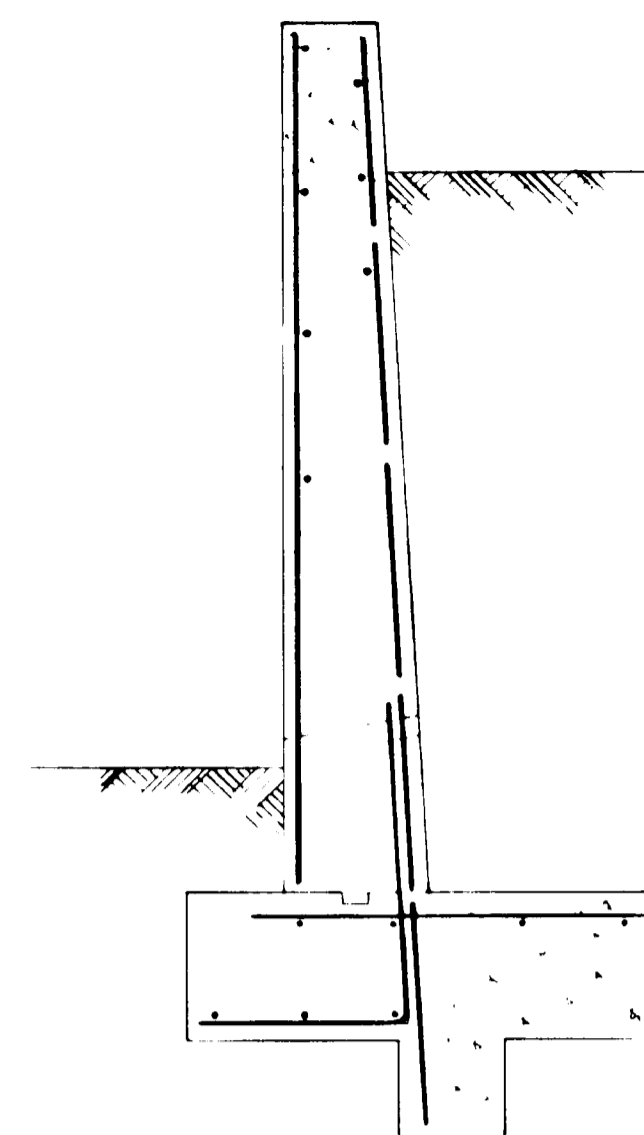
SECTION SHOWING STORM DRAIN CONNECTION TO ROOF DRAIN DOWNSPOUT
NO SCALE

STRAW BALE

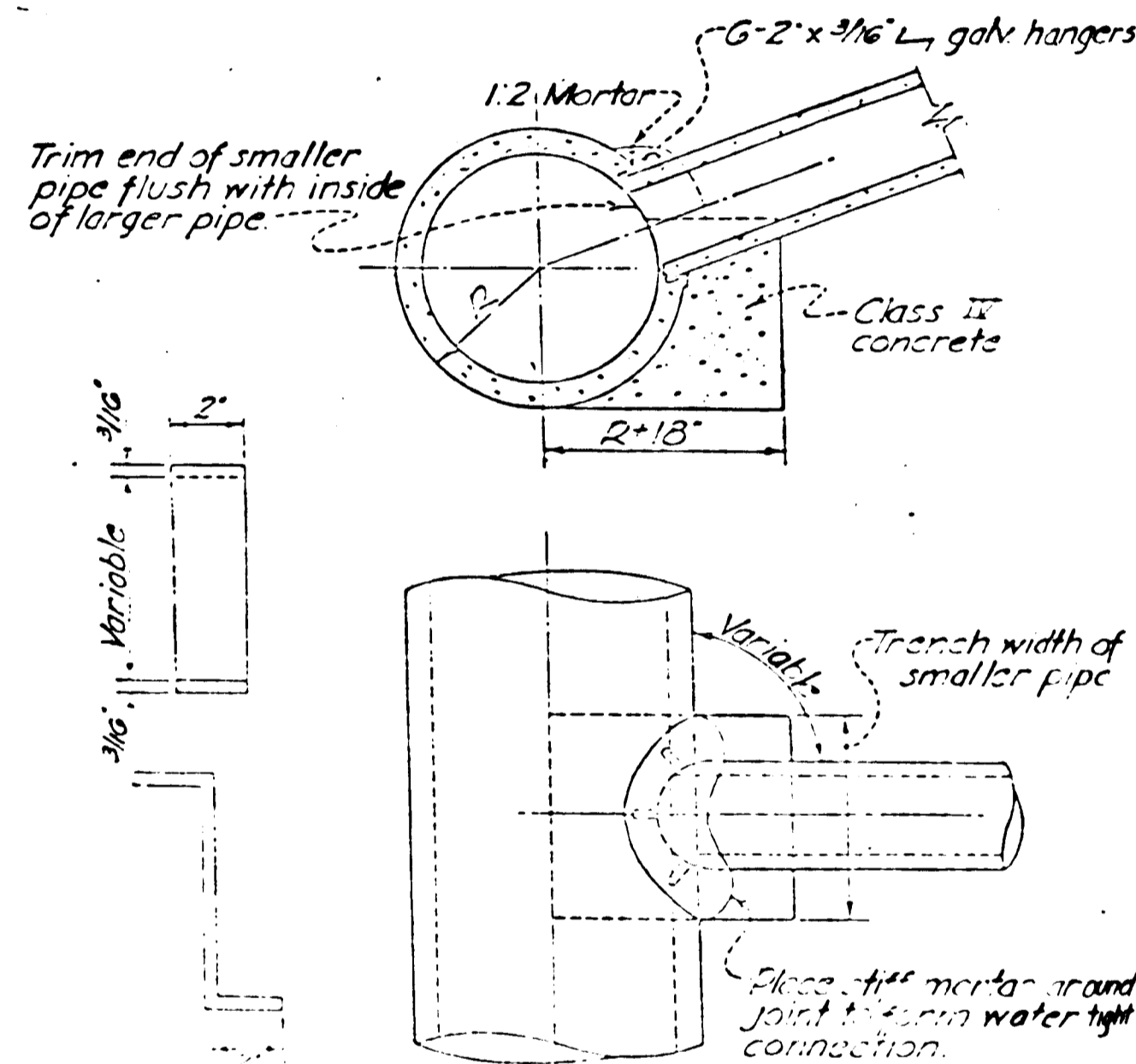


DETAILS

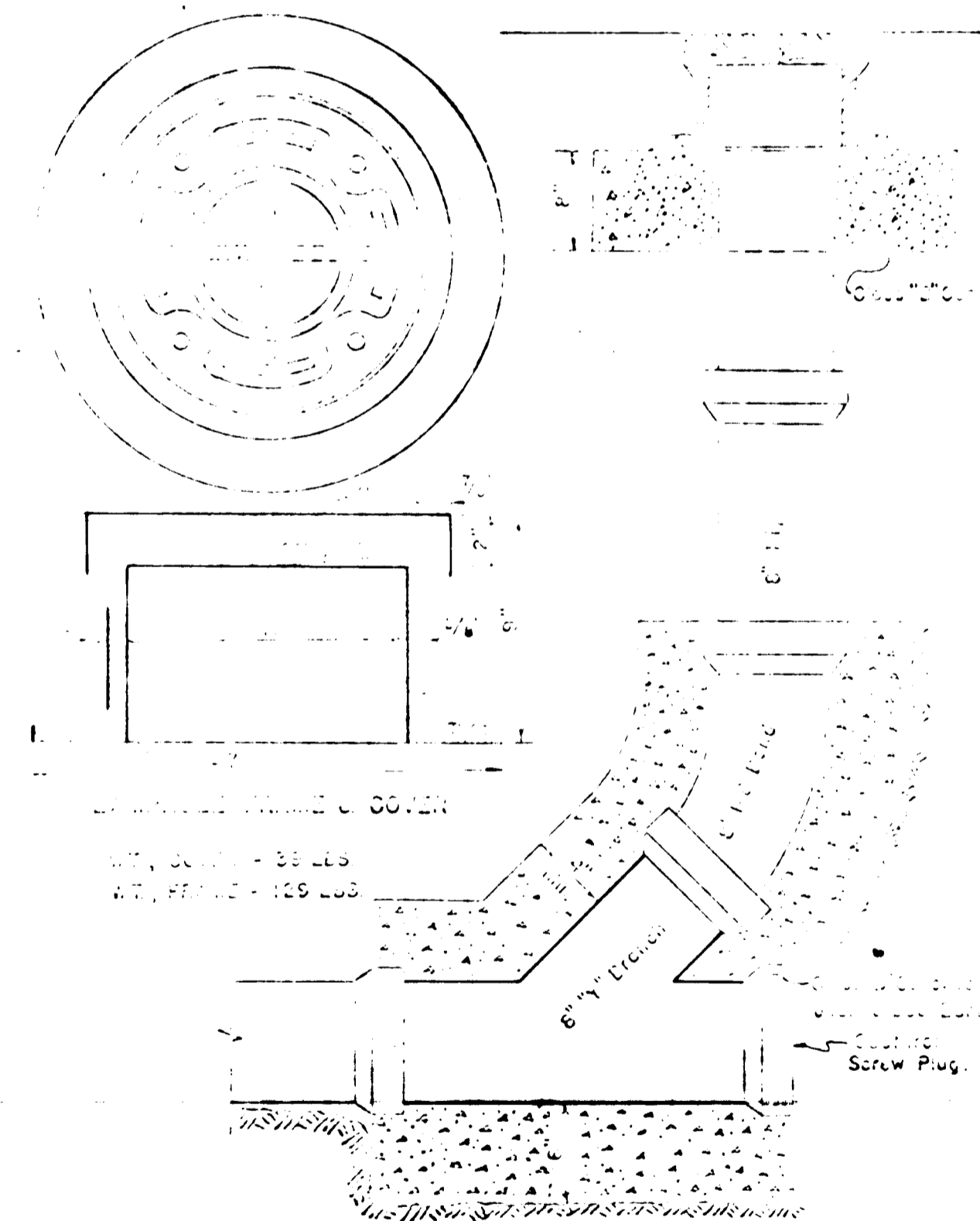
METHOD OF ANCHORING STRAW BALES TO CONTROL EROSION & SILTATION DURING CONSTRUCTION.
2 x 2 minimum posts 4' oc 16" above grade and minimum 12" in ground; 1 x 4" minimum cross-pieces nailed to post
Alternatives: metal angle or channel fence posts with cross-piece wired, or 2" minimum diameter round posts (or rebar)



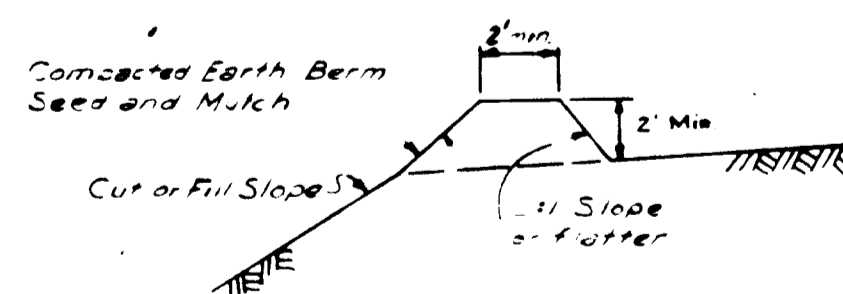
TYPICAL SECTION RETAINING WALL
NO SCALE



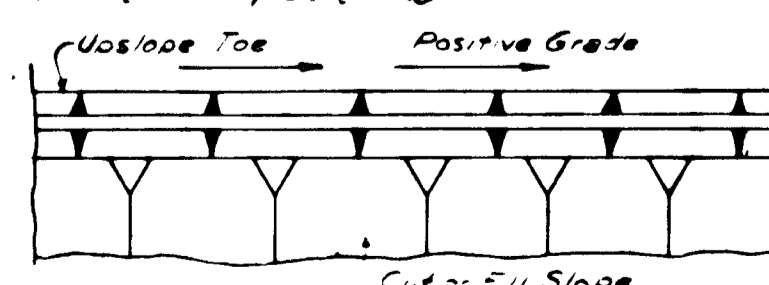
PIPE HANGER
FIELD CONNECTION



MAIN LINE CLEANOUT



INTERCEPTOR BERM



APPROVED: For Public Water and Public Sewerage Systems, Howard County Health Department
County Health Officer Date

APPROVED: Howard County Office of Planning and Zoning
Planning Director Date

Chief, Div of Land Devel. and Transport Planning Date

APPROVED: For Public Water, Public Sewerage and Storm Drainage Systems and Roads, Howard County Dept of Public Works
Director Date

Chief, Bureau of Highways Date

APPROVED
DATE 4/27/13

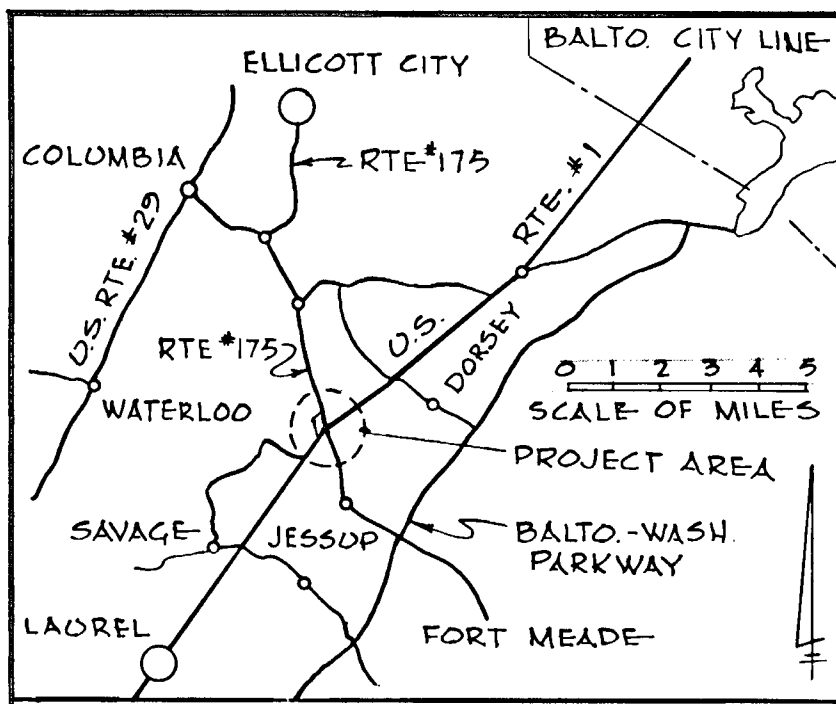
Rev Date	Rev No.	Revision Description

RICHARD P. BROWNE ASSOCIATES
ENGINEERS SURVEYORS PLANNERS ARCHITECTS
PEACHTREE CITY, GEORGIA
COLUMBIA, MD. WAYNE, N. J.

HOLIDAY INN
SECTIONS & DETAILS
6th Election District, Howard Co., Md.
Parcel 134 Tax Map 45

Des. By E.C. Scale AS SHOWN Dwg. No. 5 of 5
Drn. By J.B., M.K. Date Apr 27, 2013 Proj. No. 3314
Chk. By Approved

f. S. Lewis
4/27/13
DATE



GENERAL NOTES

- These plans and the contract specifications shall be mutually supplementary.
- It shall be the Contractor's responsibility to perform the work in such a manner as to prevent the washing of any topsoil, silt or debris onto adjacent properties and he shall be held responsible for any damage incurred.
- Tops of structures shall not be set until finish grade is completed to avoid unnecessary adjustments.
- All finish grading and pouring shall be done in such a manner as to preclude the ponding of water.
- Lengths shown for sewers are measured between centers of structures and are not to be used for horizontal stationing. Upon stakeout, hold inverts and adjust the percents of grade to reflect any differences between scaled and computed.
- The Permittee shall provide adequate means of cleaning trucks and other equipment of mud prior to entering Maryland State Roads Right-of-Way, and it is the permittee's responsibility to clean street and alley dust, and take whatever measures are necessary to insure that the road is maintained in a clean, mud and dust free condition at all times.
- The Contractor shall obtain a permit from the Howard County Dept. of Public Works to make the sewer tap to existing manhole.
- Sediment Control as shown on plan shall conform with the Howard County Soils Conservation District See sheet 3 of 5.
- Existing utilities are shown from the best available plans. Contractor shall verify location and elevations of all existing structures before proceeding with construction.
- Water Meters to be compound meters.
- All construction shall conform with Howard County and M.S.R.C. standards and specifications.

Reviewed for Howard S.C.D.
NAME
and meets Technical Requirements.
Charles E. Muller Date 5/18/73
Signature
U.S. Soil Conservation Service

This Development Plan is Approved For Soil Erosion And Sediment Control By The Howard Soil Conservation District.

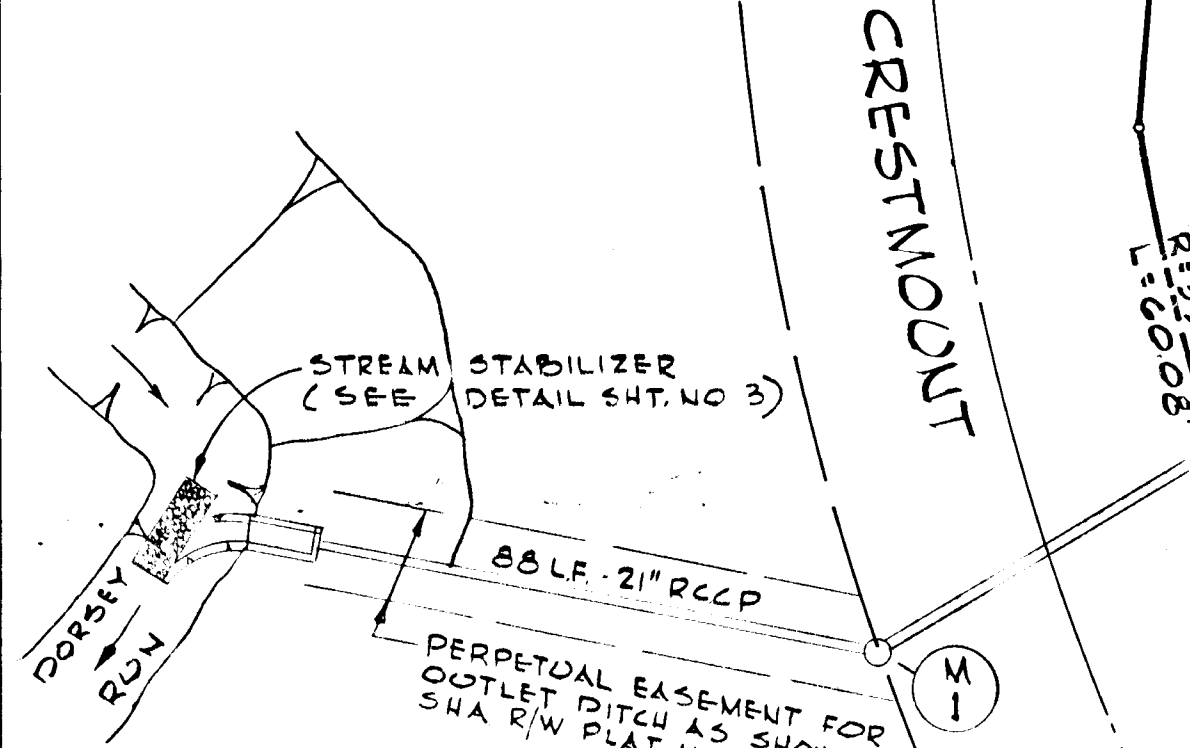
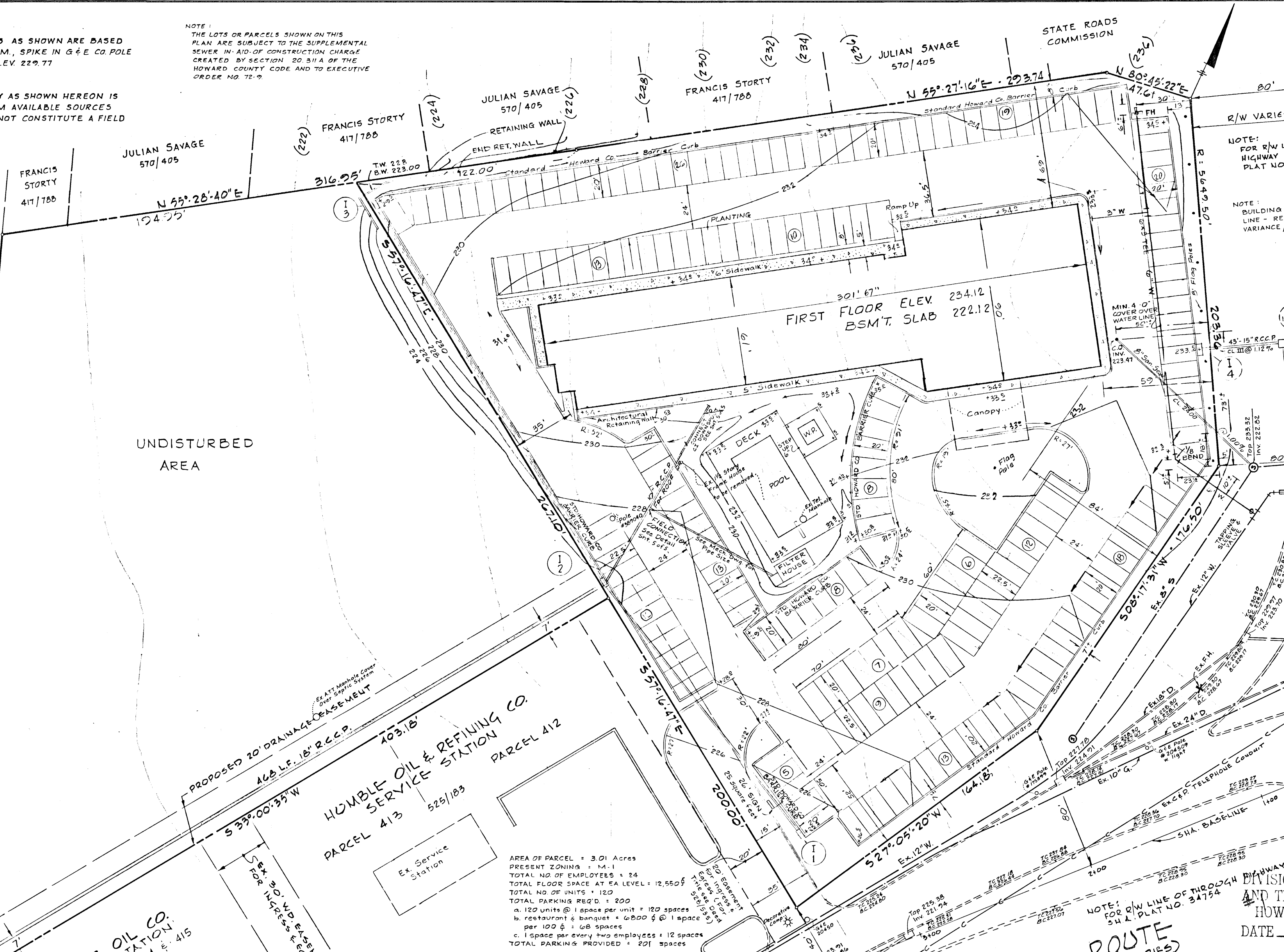
Approved Robert W. Ziehm Date 5/18/73
Howard S.C.D.

NOTE: ELEVATIONS AS SHOWN ARE BASED ON S.R.C. B.M., SPIKE IN G & E CO. POLE #204511 ELEV. 229.77

NOTE: TOPOGRAPHY AS SHOWN HEREON IS TAKEN FROM AVAILABLE SOURCES AND DOES NOT CONSTITUTE A FIELD SURVEY.

NOTE: ALL RADII ON CURVE RETURNS IN PARKING AREA ARE 5' UNLESS OTHERWISE NOTED.

NOTE: THE LOTS OR PARCELS SHOWN ON THIS PLAN ARE SUBJECT TO THE SUPPLEMENTAL SEWER IN AID OF CONSTRUCTION CHARGE CREATED BY SECTION 20.311A OF THE HOWARD COUNTY CODE AND TO EXECUTIVE ORDER NO. 72-9.



LEGEND

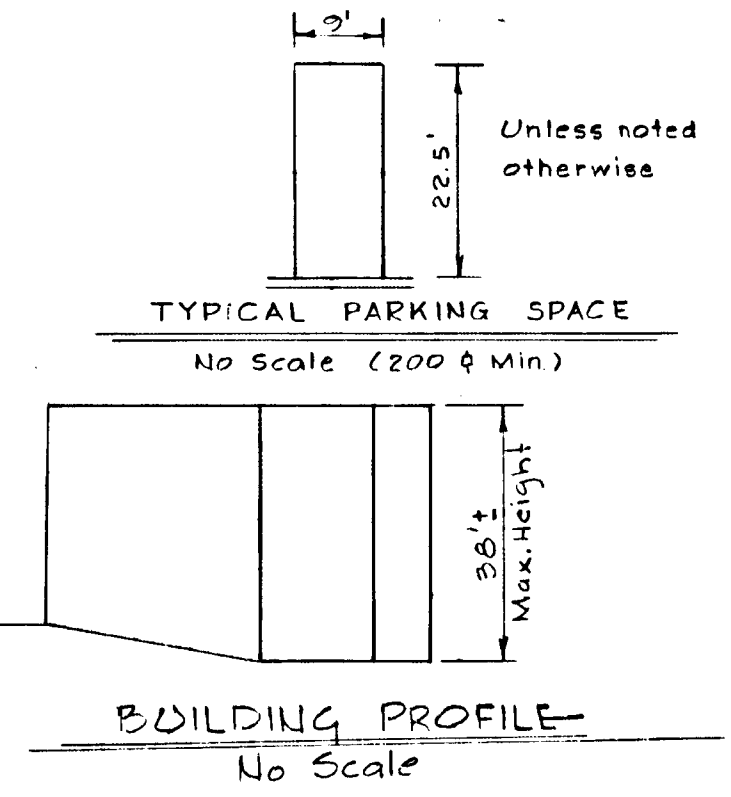
EXISTING CONTOURS	(230)
FINISHED CONTOURS	230
FIRST FLOOR ELEVATION	F.F. 235.92
TOP SLAB ELEVATION	T.S. 223.92
SPOT ELEVATION	289
DIRECTION OF DRAINAGE	

APPROVED: For Public Water and Public Sewerage Systems, Howard County Health Department
John F. Wind County Health Officer Date 5-30-73

APPROVED: Howard County Office of Planning and Zoning
John M. Hines Planning Director Date 5-31-73

APPROVED: For Public Water, Public Sewerage and Storm Drainage Systems and Roads Howard County Dept. of Public Works.
William A. Alt Director Date 5/25/73

Joseph L. Head Chief, Bureau of Highways Date 5-25-73



AREA OF PARCEL = 3.01 Acres
PRESENT ZONING = M-1
TOTAL NO. OF EMPLOYEES = 24
TOTAL FLOOR SPACE AT EA LEVEL = 12,550 sq ft
TOTAL NO. OF UNITS = 120
TOTAL PARKING REQ'D = 200
a. 120 units @ 1 space per unit = 120 spaces
b. restaurant & banquet = 6,000 sq ft @ 1 space per 100 sq ft = 60 spaces
c. 1 space per every two employees = 12 spaces
TOTAL PARKING PROVIDED = 201 spaces



Richard P. Browne
RICHARD P. BROWNE Reg No. 5238 DATE
F. Denis Light
F. DENIS LIGHT Reg No. 7617 DATE 4/27/73

OWNER: JULIAN SAVAGE
1000 SULLY RD.
STERLING, VA 22170
703-471-7484

DEVELOPER: COLUMBIA MOTEL ASSOC.
JULIAN SAVAGE - GENERAL PARTNER
1000 SULLY RD.
STERLING, VA 22170
703-471-7484



Rev Date	Rev No.
RICHARD P. BROWNE ASSOCIATES	
PEACHT COLUMBIA, MD	
HOL SITE DEVE	
6th Election Parcel 134	
Des. By E.C.	Sc
Drn. By JB	Da
Chk. By	Ap