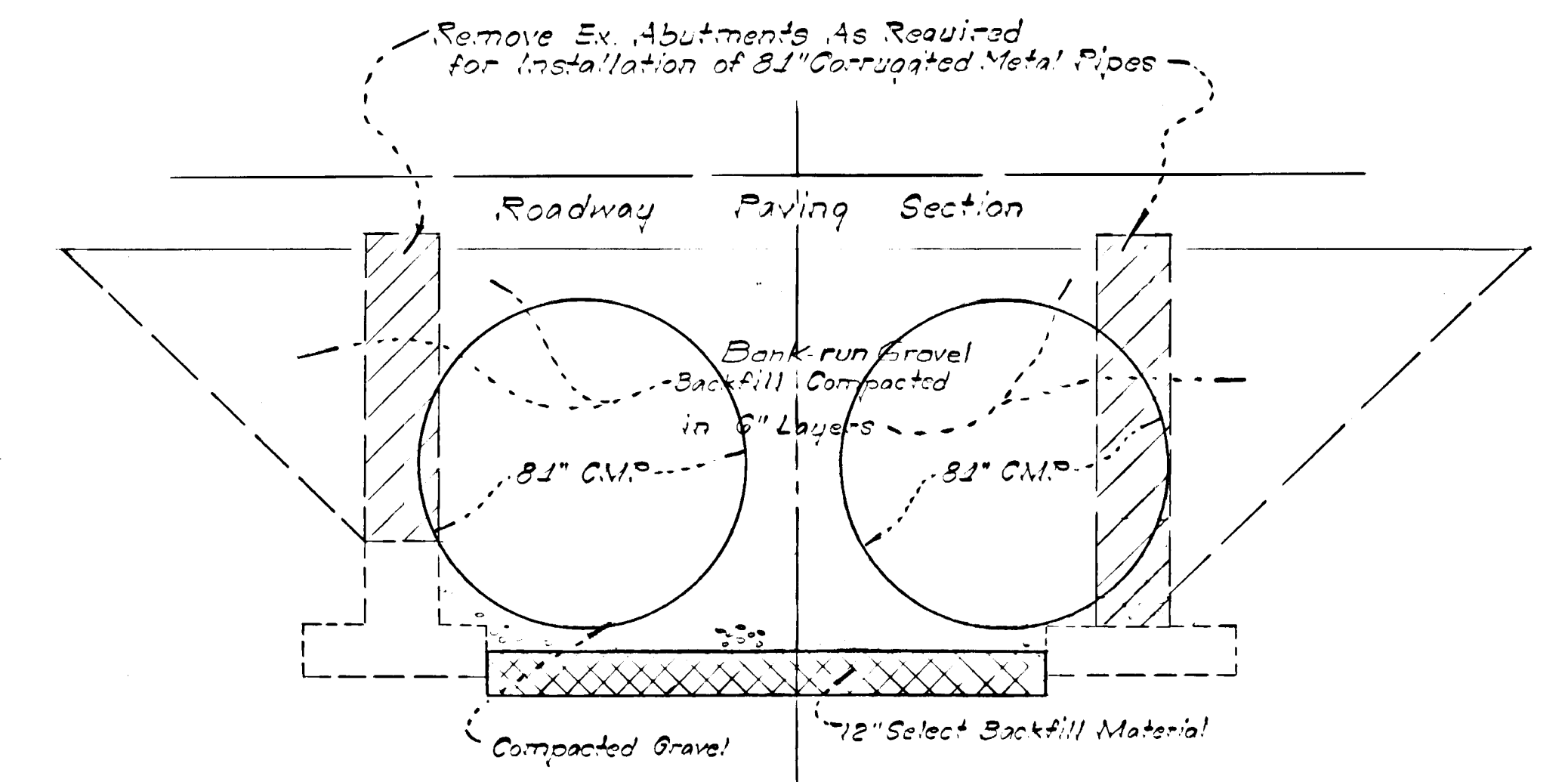
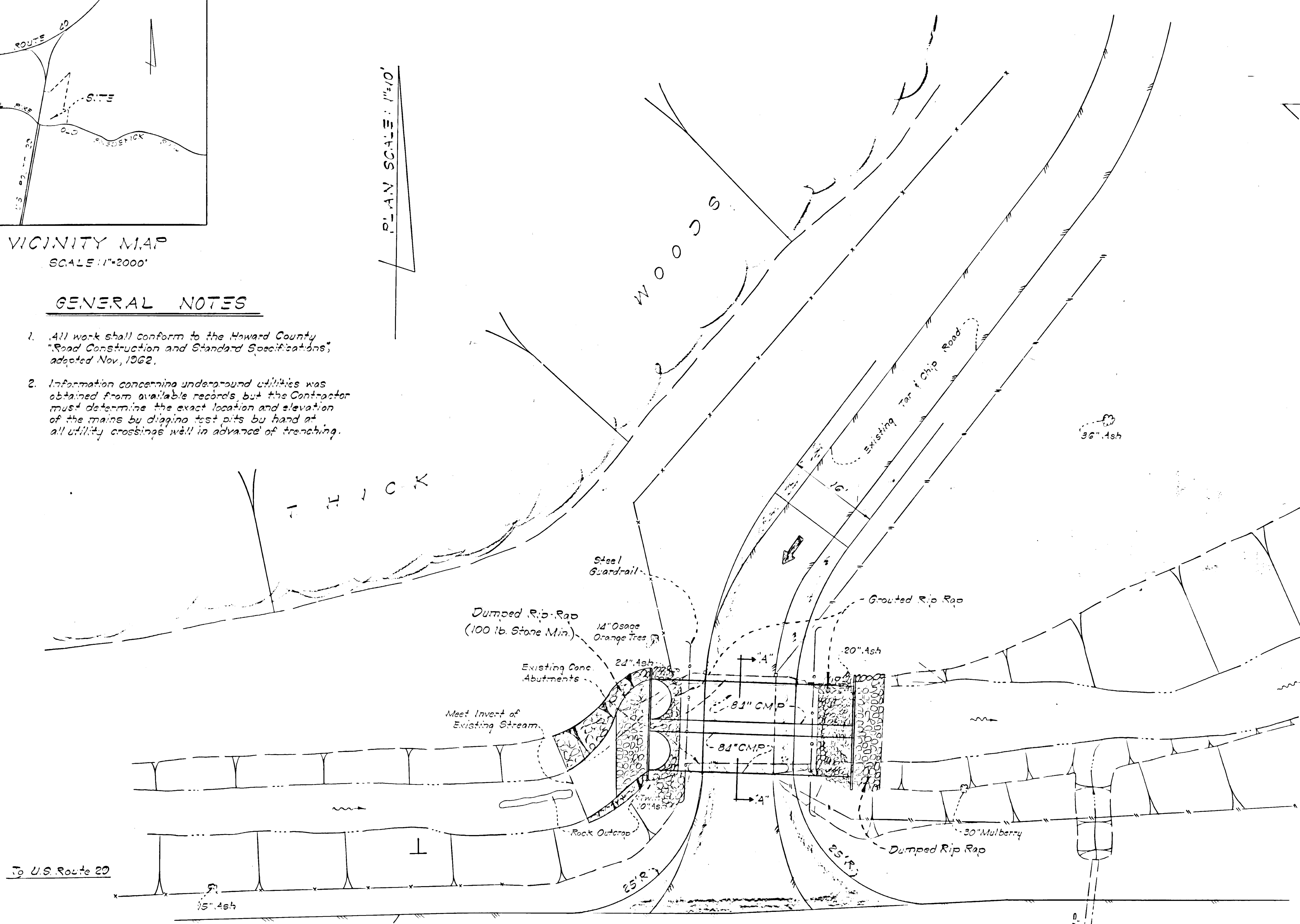


VICINITY MAP
SCALE: 1"=2000'

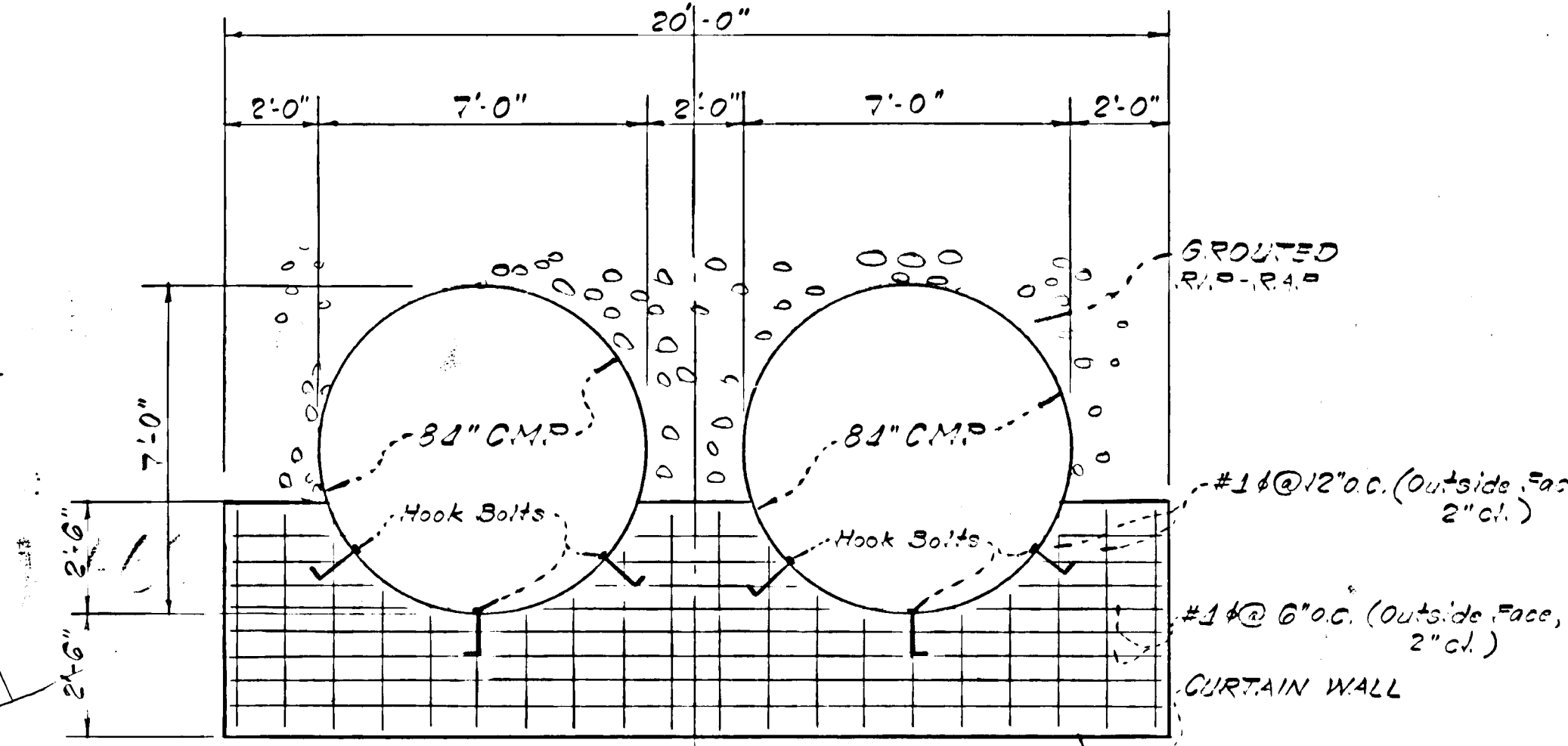
GENERAL NOTES

- All work shall conform to the Howard County "Road Construction and Standard Specifications", adopted Nov, 1962.
- Information concerning underground utilities was obtained from available records, but the Contractor must determine the exact location and elevation of the mains by digging test pits by hand at all utility crossings well in advance of trenching.

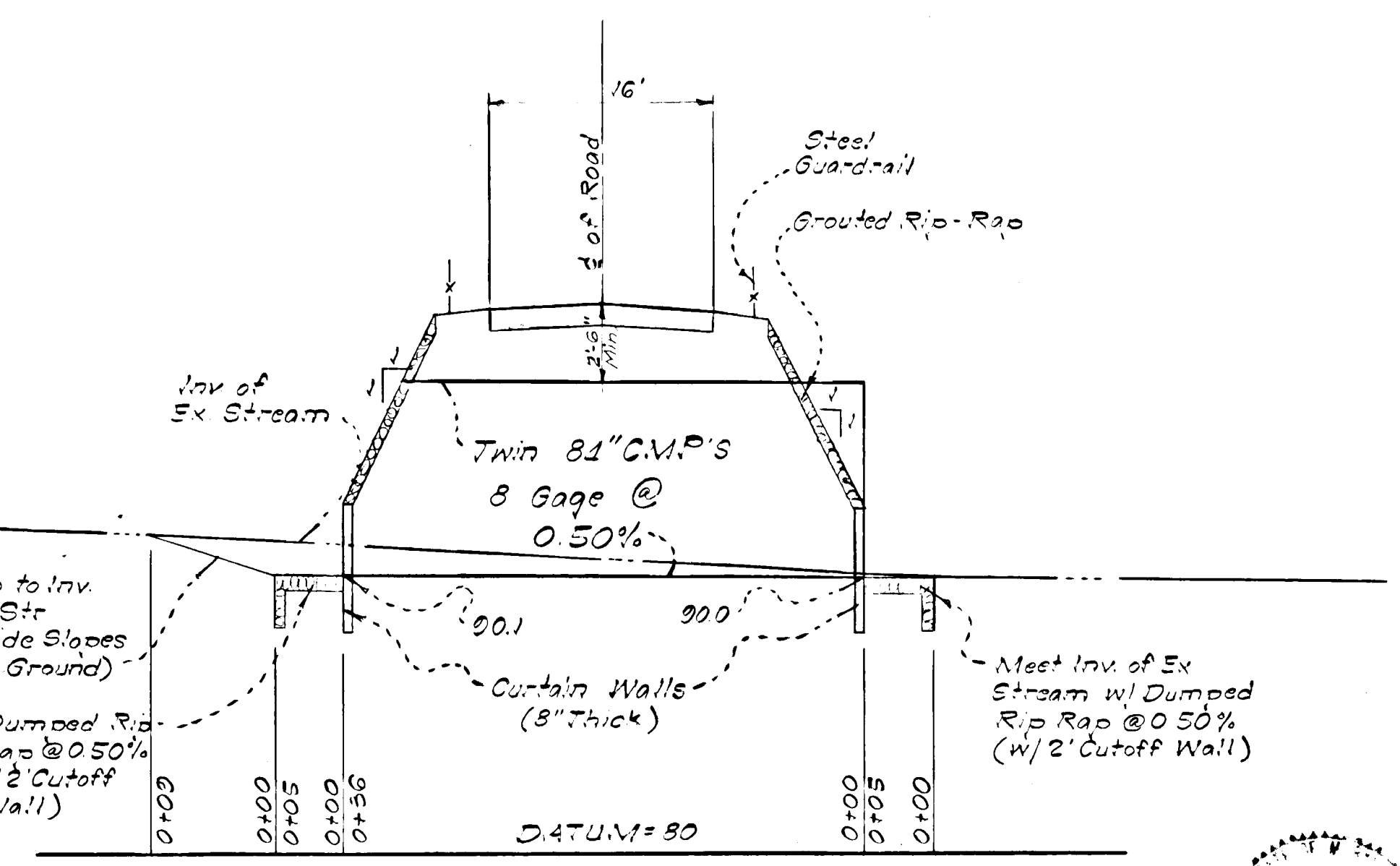
PLAN SCALE: 1"=10'



SECTION "A-A"
NO SCALE



DETAIL OF CONCRETE CURTAIN WALL & GROUDED RIP-RAP
NO SCALE



Profile Scales:
HOR: 1"=10'
VERT: 1"=5'

APPROVED FOR PUBLIC WATER AND PUBLIC SEWERAGE SYSTEMS, HOWARD COUNTY HEALTH DEPARTMENT

Heather P... 9-13-72
COUNTY HEALTH OFFICER DATE

APPROVED: HOWARD COUNTY OFFICE OF PLANNING & ZONING
Thomas L. Hamist 9-15-72
PLANNING DIRECTOR DATE

W. Cleveland 9/19/72
CHIEF, DIVISION OF LAND DEVELOPMENT DATE

APPROVED FOR PUBLIC WATER AND PUBLIC SEWERAGE, STORM DRAINAGE SYSTEMS AND PUBLIC ROADS, HOWARD COUNTY DEPARTMENT OF PUBLIC WORKS

William G. Ott 9/19/72
DIRECTOR DATE

B. W. Heilbrunn 9/10/72
CHIEF BUREAU OF HIGHWAYS DATE

DEVELOPER	NO.	REVISIONS	DATE
INVESTORS ROUTE 20 LIMITED PARTNERSHIP c/o ROBERT W. KEATS 5530 Wisconsin Ave., Ste. 160 Chevy Chase, Md., 20015			

OLD FREDERICK ROAD

R. WAYNE KEELER & ASSOCIATES INC.
CONSULTING ENGINEERS
416 HUNGERFORD DR. ROCKVILLE, MARYLAND 20850
301 762-9200

TEMPORARY STREAM CROSSING
PART OF THE PROPERTY OF THE
INVESTORS ROUTE 20 LIMITED PARTNERSHIP
2ND ELECTION DISTRICT
HOWARD COUNTY, MARYLAND

SCALE AS SHOWN	SHEET
DATE AUG, 1972	10-1
DESIGN HEV	FILE NO. 72023
DRAWN WEF	