

# COLUMBIA

HOWARD COUNTY, MARYLAND  
6th ELECTION DISTRICT

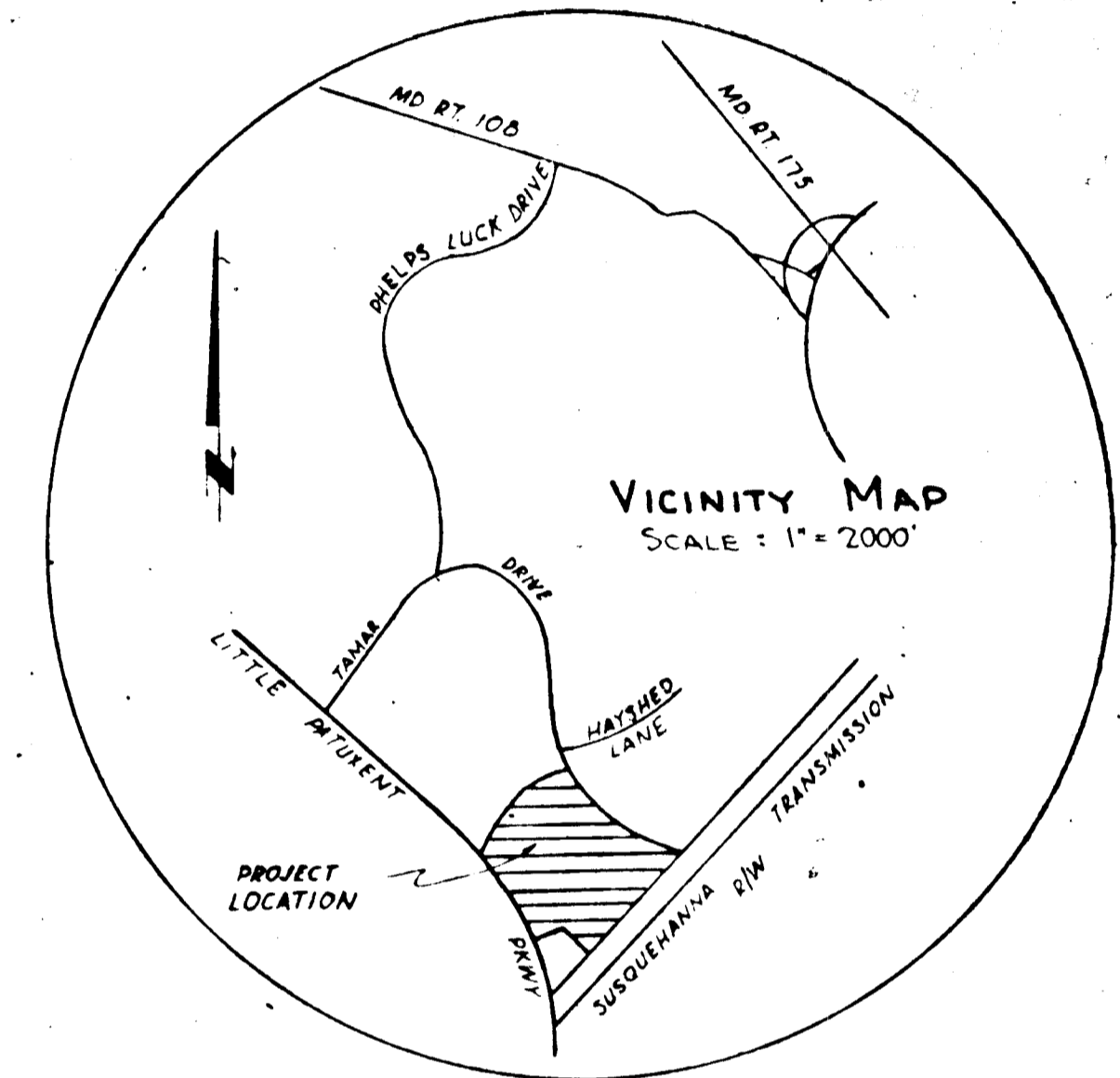
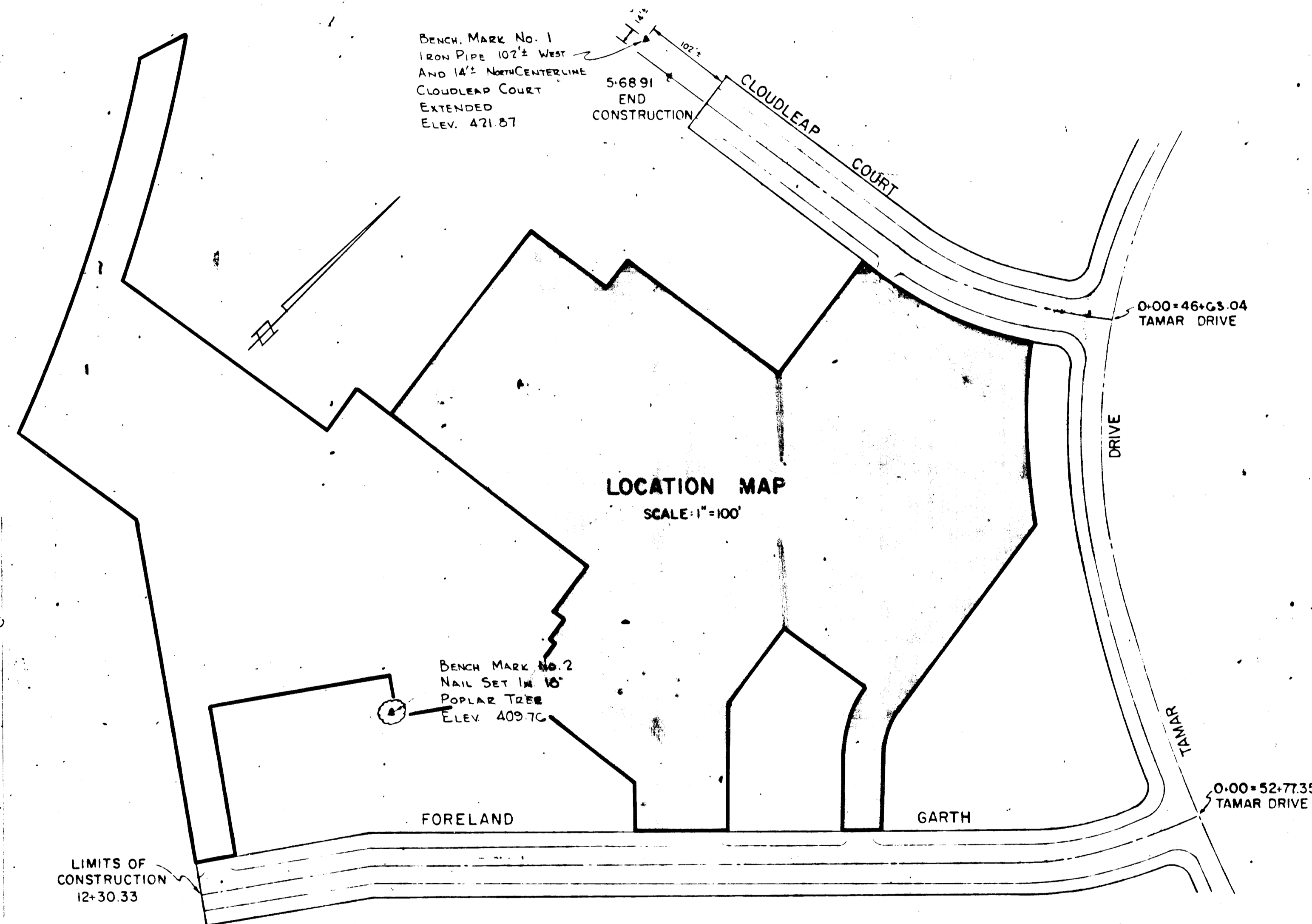
## VILLAGE OF LONGREACH SECT. 1 AREA 5

### GENERAL NOTES

- NO ON-SITE GRADING SHALL BE DONE UNTIL SEDIMENT BASINS PREVIOUSLY APPROVED BY THE SOIL CONSERVATION SERVICE ARE COMPLETED. SEE FILE F-71-65.
- EXCEPT WHERE OTHERWISE NOTED ALL CONSTRUCTION MATERIALS AND DETAILS SHALL BE IN ACCORDANCE WITH THE LATEST REVISIONS OF THE HOWARD COUNTY ROAD CONSTRUCTION CODE AND STANDARD SPECIFICATIONS.
- PUBLIC WATER AND SANITARY SEWER FACILITIES ARE AVAILABLE AND ADEQUATE.
- PROPOSED GRADE CONTOURS REPRESENT FINISHED GRADES. CONTRACTOR SHALL MAKE REQUIRED ALLOWANCES TO SUBGRADE FOR TOPSOIL, PAVING AND OTHER SURFACE FINISHES AS REQUIRED.
- LOCATION OF EXISTING UTILITIES IS APPROXIMATE ONLY AND IS OBTAINED FROM RECORDED DRAWINGS.
- PARKING LOT CURBS TO BE HOWARD COUNTY STANDARDS D-40 PG 95.
- PARKING LOT PAVING SHALL CONSIST OF 4" BITUMINOUS CONCRETE BASE (BAND C-2 OR G-3) AND 1" BITUMINOUS CONCRETE SURFACE (BAND C-3).
- ALL PARKING LOT RADII TO BE 4' EXCEPT WHERE OTHERWISE NOTED.
- ALL PARKING SPACES 10x20'
- CONTOURS EXISTING 460' INTERVAL PROPOSED 460' INTERVAL
- CONTRACTOR SHALL NOTIFY FOLLOWING UTILITY COMPANIES PRIOR TO COMMENCING WORK:  
BELL TELEPHONE SYSTEM 393 3649  
LONG DISTANCE CABLE DIV 393 3553  
BALTO GAS AND ELECTRIC CO 539 3000 EXT 691
- ALL AREAS DISTURBED BY GRADING OR CONTRACTORS OPERATIONS NOT BEING PAVED, SHALL BE TOPSOILED, SEEDED AND MULCHED IN ACCORDANCE WITH THE FOLLOWING:  
A. PLACE 8" LAYER OF TOPSOIL TO FINISHED GRADE.  
B. SPREAD PULVERIZED DOLOMITIC LIMESTONE AT RATE OF ONE TON PER ACRE.  
C. SPREAD 10-10-10 COMMERCIAL GRADE FERTILIZER @ RATE OF 600 LBS PER ACRE AND IMMEDIATELY DISC INTO TOPSOIL TO THE DEPTH OF 3".  
D. SEED PREPARED AREAS AT RATE OF 70 LBS PER ACRE USING KENTUCKY FESCUE 31.  
E. MULCH ALL AREAS IMMEDIATELY AFTER SEEDING WITH UNWEATHERED SMALL GRAIN, STRAW OR HAY AT RATE OF 15 TONS/ACRE. SPRAY MULCH WITH EMULSIFIED ASPHALT (25-1 OR 2) AT RATE OF 0.24 GAL / 50 TD.
- GRADE AT ALL INLETS TO PROVIDE POSITIVE FLOW TO INLETS. ALL INLETS TO BE CAPPED PRIOR TO CONSTRUCTION. CAP SHALL BE 1/2" THICK METAL PLATE OR EQUIVALENT AND SHALL BE A SIZE TO EXTEND 6" BEYOND EACH SIDE OF INLET AND 6" INTO THE GROUND.
- SEE SHEETS FOR ROAD AND STORM DRAINAGE PROFILES AND OTHER STORM DRAINAGE INFORMATION AND OTHER DETAILS.
- SEE ARCHITECTURAL DRAWINGS FOR BUILDING DIMENSIONS AND TIES TO PROPERTY LINE.
- FOR WATER, SANITARY SEWER AND DRAINAGE CONNECTIONS SEE MECHANICAL PLANS.
- PARKING REQUIREMENTS  

USE	AREA	RATIO	REQUIRED
RETAIL SPACE	30,750*	3 CARS/1000*	155 CARS
OFFICE SPACE	15,000*	1 CAR PER 250*	50 CARS
SUPERMARKET	27,850*	5 CARS / 1000*	140 CARS

TOTAL CARS REQUIRED 345 CARS  
TOTAL CARS PROVIDED 345 CARS
- FOR SEWER AND WATER PLANS SEE CONTRACTS 452-D-W#5.
- STORM SEWERS AND CURBS SHOWN AS EXISTING ARE AS SHOWN ON ROAD CONSTRUCTION PLANS FOR CLOUDLEAP COURT AND FORELAND GARTH FILED WITH HOWARD COUNTY, MARYLAND.
- VILLAGE OF LONGREACH SECTION 1 AREA 5 RECORDED PLAT BOOK 21 FOLIOS 81 TO 83.
- A. SPREAD PULVERIZED DOLOMITIC LIMESTONE AT RATE OF ONE TON PER ACRE  
B. SPREAD 500 LB 5-10-10 FERTILIZER PER ACRE  
C. SEED WITH ITALIAN RYEGRASS AT RATE OF 35 LBS PER ACRE  
D. MULCH AT RATE OF ONE AND ONE HALF TONS PER ACRE
- THERE ARE NO SIGNS, WALLS OR FENCES ON THIS SITE PLAN.
- COVERAGE: 15%
- AREA OF PARCEL: 7.302 AC.
- INSTALLATION OF ALL TRAFFIC CONTROL DEVICES SHALL BE IN ACCORDANCE WITH THE "MANUAL OF UNIFORM TRAFFIC CONTROL DEVICES" 1971 EDITION.



### SHEET INDEX

- C-1 COVER SHEET
- C-2 SITE PLAN
- C-3 STORM DRAINAGE AREAS
- C-4 PROFILES AND DETAILS

OWNER & DEVELOPER  
COLUMBIA DEVELOPMENT CORPORATION  
COLUMBIA, MARYLAND

WALTER L. PHILLIPS  
INCORPORATED  
CERTIFIED CIVIL ENGINEER & LAND SURVEYOR  
901 WEST BROAD STREET, FALLS CHURCH, VIRGINIA

**PROFESSIONAL ENGINEER**

I CERTIFY THAT THE PLAN OF DEVELOPMENT AND PLAN FOR CONTROL OF SILT AND EROSION MEETS THE REQUIREMENTS, STANDARDS AND SPECIFICATIONS OF THE HOWARD SOIL CONSERVATION DISTRICT.

*Walter L. Phillips*  
SIGNATURE

7/18/72  
DATE

**DEVELOPER**

I CERTIFY THAT ALL DEVELOPMENT AND/OR CONSTRUCTION WILL BE DONE ACCORDING TO THE PLAN OF DEVELOPMENT AND PLAN OF SILT AND SEDIMENT CONTROL.

\_\_\_\_\_  
SIGNATURE

\_\_\_\_\_  
DATE

**HOWARD SOIL CONSERVATION DISTRICT**

THIS DEVELOPMENT PLAN IS APPROVED FOR SOIL EROSION AND SEDIMENT CONTROL BY THE HOWARD SOIL CONSERVATION DISTRICT.

REVIEWED *James M. Nelson* 8/18/72  
DISTRICT CONSERVATIONIST DATE

APPROVED *Robert D. Zorum* 8/29/72  
HOWARD SOIL CONSERVATION DISTRICT DATE

APPROVED FOR PUBLIC WATER AND PUBLIC SEWERAGE SYSTEMS  
HOWARD COUNTY HEALTH DEPARTMENT

*William A. Artman* 8/25/72  
COUNTY HEALTH OFFICER DATE

APPROVED HOWARD COUNTY OFFICE OF PLANNING AND ZONING  
*William A. Artman* 8-25-72  
PLANNING DIRECTOR DATE

APPROVED DIVISION OF LAND DEVELOPMENT  
TRANSPORTATION PLANNING  
*W. O. Hall* 8-25-72  
DATE

APPROVED FOR PUBLIC WATER, PUBLIC SEWERAGE AND STORM  
DRAINAGE SYSTEMS AND ROADS  
HOWARD COUNTY DEPARTMENT OF PUBLIC WORKS  
*William A. Artman* 8/25/72  
DIRECTOR DATE

*W. O. Hall* 8-25-72  
CHIEF, BUREAU OF HIGHWAYS DATE

SDP 72-98

DRAWN DATE 7-10-72 SCALE  
REV 8-13-72 2-872 AS SHOWN  
4-19-72

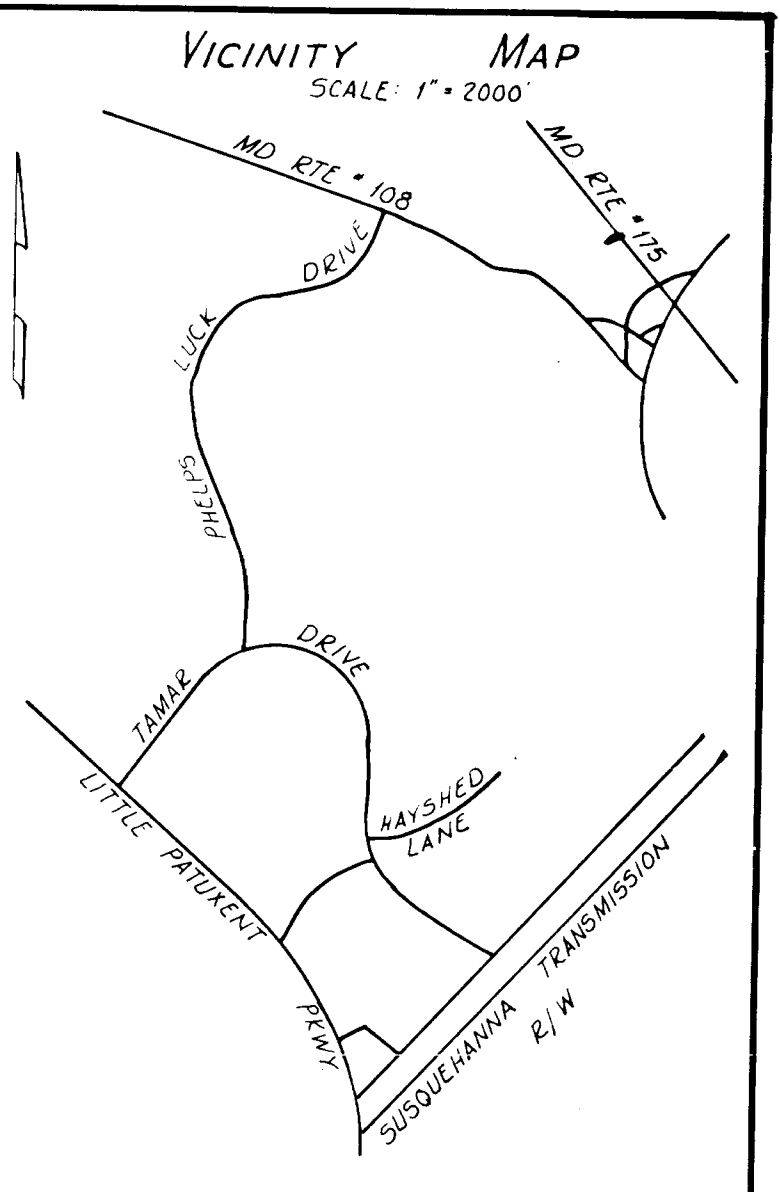
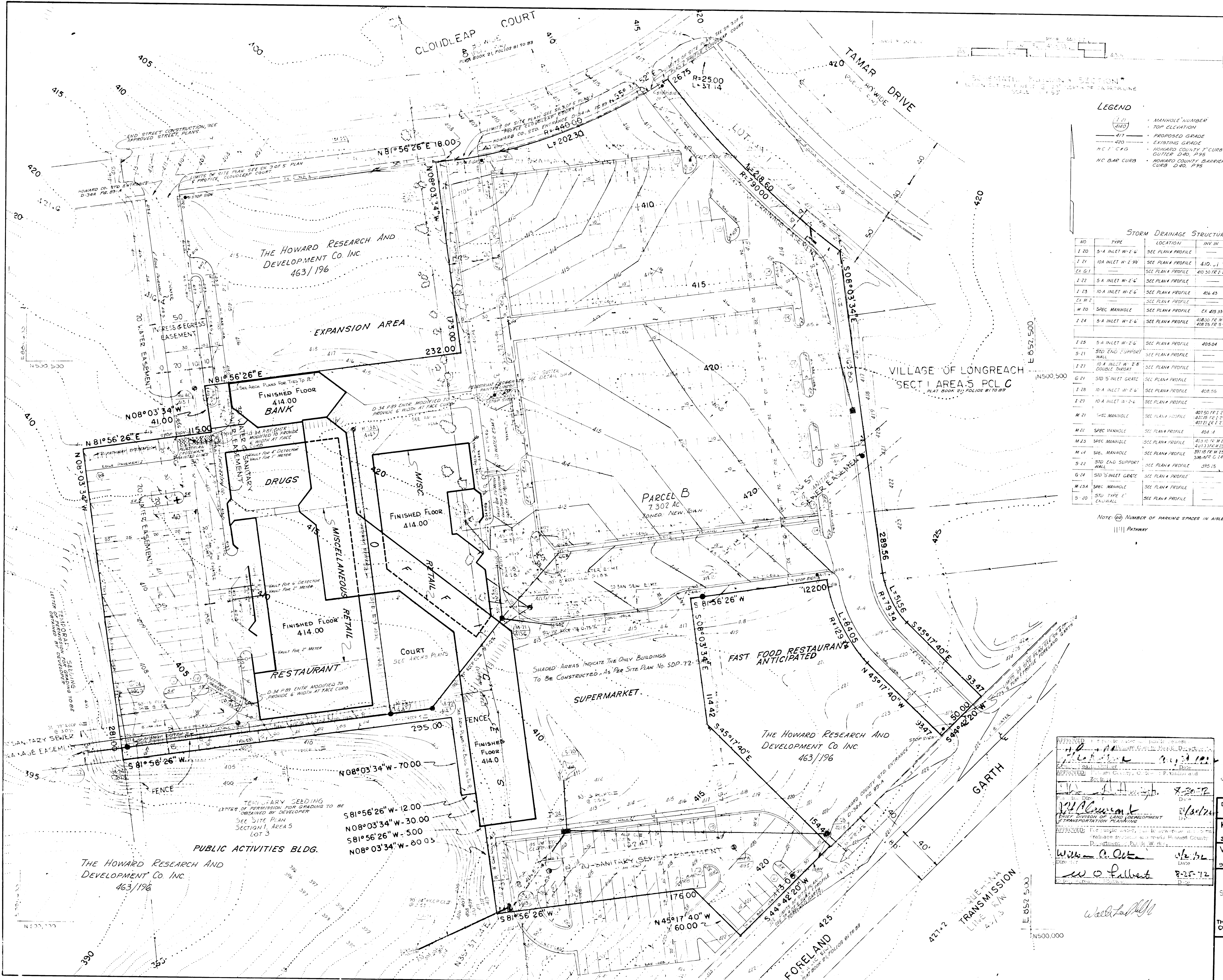
**KENT COOPER & ASSOCIATES**  
ARCHITECTS  
3203 GRACE ST. N.W. WASHINGTON D.C.

**WALTER L. PHILLIPS, INC.**  
CIVIL ENGINEERS  
901 W. BROAD ST. FALLS CHURCH, VA.

COVER SHEET  
SECTION 1 - AREA 5 - PARCEL B  
**LONG REACH VILLAGE CENTER**  
THE COLUMBIA DEVELOPMENT CORPORATION  
COLUMBIA, HOWARD COUNTY, MARYLAND  
6th ELECTION DISTRICT

**C-1**





**LEGEND**

- MANHOLE NUMBER
- TOP ELEVATION
- PROPOSED GRADE
- EXISTING GRADE
- HC 1' C&G
- HOWARD COUNTY 1' CURB & GUTTER D. 20, P. 95
- HOWARD COUNTY BARRIER CURB D. 40, P. 95

**STORM DRAINAGE STRUCTURE SCHEDULE**

NO	TYPE	LOCATION	INV IN	INV OUT	TOP ELEV	REMARKS
1-20	5" INLET W-2'6"	SEE PLANA PROFILE	---	410.71	410.60	HD CO STD DWG D. 444 P. 119A
1-21	10" INLET W-2'6"	SEE PLANA PROFILE	410.71	---	410.36	HD CO STD DWG D. 444 P. 119A
1-22	5" INLET W-2'6"	SEE PLANA PROFILE	410.30 (E-21)	---	406.68	HD CO STD DWG D. 444 P. 119A
1-23	10" INLET W-2'6"	SEE PLANA PROFILE	406.43	---	406.12	HD CO STD DWG D. 444 P. 119A
1-24	5" INLET W-2'6"	SEE PLANA PROFILE	406.04	---	406.04	HD CO STD DWG D. 444 P. 119A
M-20	SPEC MANHOLE	SEE PLANA PROFILE	414.33	---	414.84	SEE SHEET 3 ROAD PLANS
1-24	5" INLET W-2'6"	SEE PLANA PROFILE	408.00 (E-14)	---	406.57	HD CO STD DWG D. 444 P. 119A
1-25	5" INLET W-2'6"	SEE PLANA PROFILE	405.04	---	400.00	HD CO STD DWG D. 444 P. 119A
S-21	STD END SUPPORT WALL	SEE PLANA PROFILE	---	---	394.82	HD CO STD DWG D. 444 P. 101
1-21	10" INLET W-2'8" DOUBLE THROAT	SEE PLANA PROFILE	---	---	408.65	HD CO STD DWG D. 444 P. 119A
G-21	STD 5" INLET GRATE	SEE PLANA PROFILE	---	---	409.00	HD CO STD DWG D. 444 P. 119A
1-28	10" INLET W-2'6"	SEE PLANA PROFILE	408.55	---	408.00	HD CO STD DWG D. 444 P. 119A
1-29	10" INLET W-2'6"	SEE PLANA PROFILE	---	---	408.12	HD CO STD DWG D. 444 P. 119A
M-21	SPEC MANHOLE	SEE PLANA PROFILE	407.50 (E-12)	---	406.45	SEE SHEET 3 ROAD PLANS
M-22	SPEC MANHOLE	SEE PLANA PROFILE	404.4	---	403.81	SEE SHEET 3 ROAD PLANS
M-23	SPEC MANHOLE	SEE PLANA PROFILE	403.10 (E-13)	---	401.88	SEE SHEET 3 ROAD PLANS
M-24	SPEC MANHOLE	SEE PLANA PROFILE	391.18 (E-14)	---	394.30	SEE SHEET 3 ROAD PLANS
S-22	STD END SUPPORT WALL	SEE PLANA PROFILE	---	---	395.15	HD CO STD DWG D. 444 P. 101
G-24	STD 5" INLET GRATE	SEE PLANA PROFILE	---	---	406.00	HD CO STD DWG D. 444 P. 119A
M-25A	SPEC MANHOLE	SEE PLANA PROFILE	---	---	414.23	SEE SHEET 4 ROAD PLANS
S-20	STD TYPE 'C' CURB WALL	SEE PLANA PROFILE	---	---	409.5	HD CO STD DWG D. 444 P. 109

NOTE: (C) NUMBER OF PARKING SPACES IN AREA.  
 Pathway

**APPROVED**

DATE: July 26, 1972

**SDP 72-98**

DRAWN: [Signature] DATE: 7/10/72 SCALE: 1" = 30'

DATE: 7/13/72

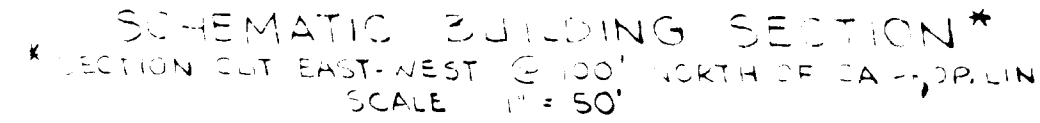
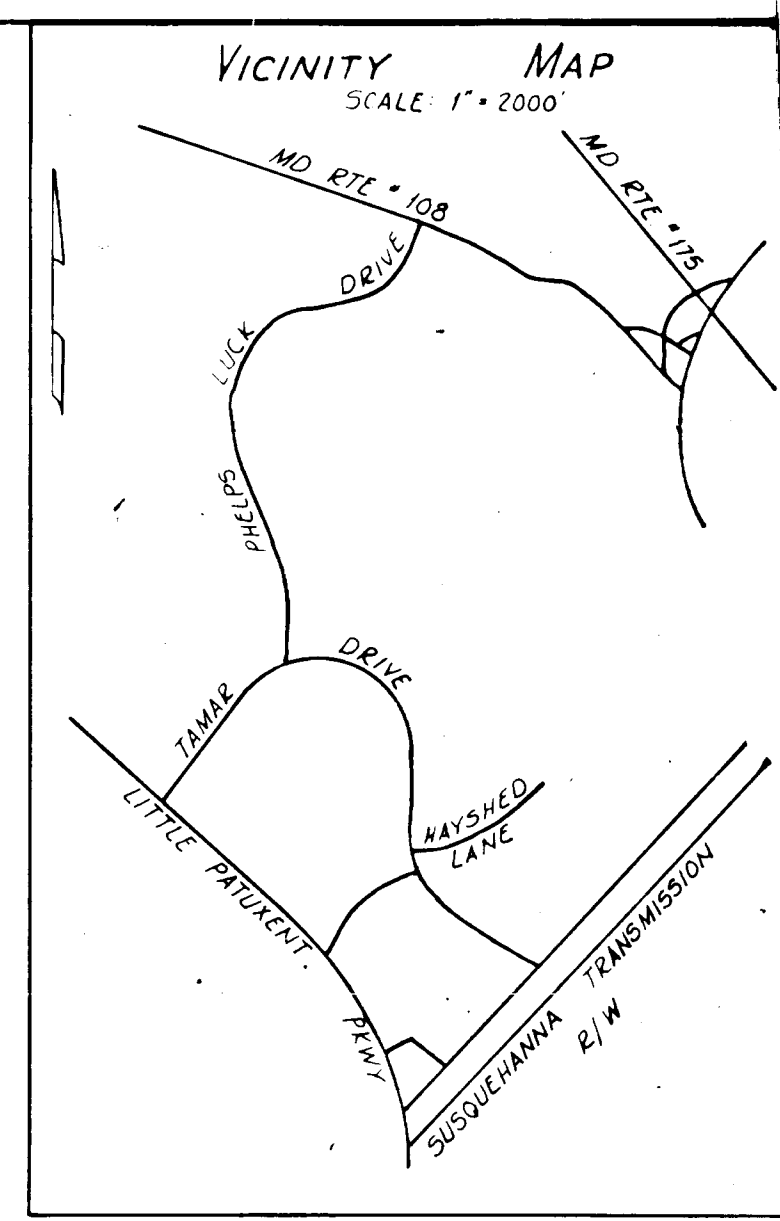
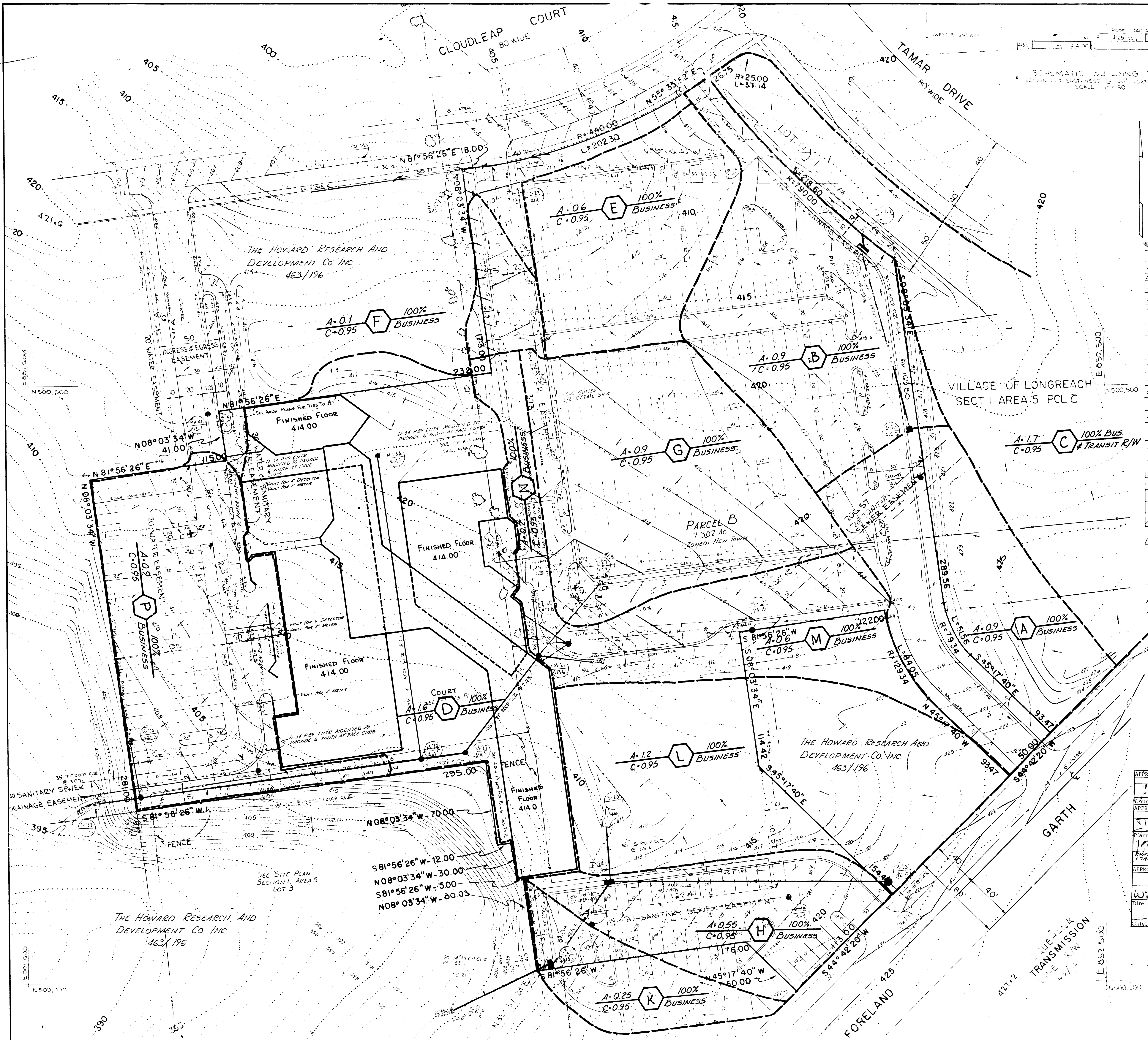
**KENT COOPER & ASSOCIATES ARCHITECTS**  
 3203 GRACE ST. N.W. WASHINGTON D.C.

**WALTER L. PHILLIPS, INC. CIVIL ENGINEERS**  
 901 W. BROAD ST. FALLS CHURCH, VA.

**SITE PLAN**  
 SECTION - AREA 5 - PARCEL B  
**LONG REACH VILLAGE CENTER**  
 THE COLUMBIA DEVELOPMENT CORPORATION  
 COLUMBIA, HOWARD COUNTY, MARYLAND  
 6th ELECTION DISTRICT

**C-2**





STORM DRAINAGE STRUCTURE SCHEDULE

ID	TYPE	LOCATION	INV IN	INV OUT	TOP ELEV	REMARKS
I 21	5' A INLET W-2' G	SEE PLANA PROFILE	411.89	415.60	415.60	HD CO STD DWG D-644 P-119A
I 21	10' A INLET W-2' 9/8	SEE PLANA PROFILE	411.11	410.36	410.00	HD CO STD DWG D-644 P-119A
EX G 1	SEE PLANA PROFILE	410.55/RE 1 21				
I 22	5' A INLET W-2' G	SEE PLANA PROFILE	406.68	410.00	410.00	HD CO STD DWG D-644 P-119A
I 23	10' A INLET W-2' 9/8	SEE PLANA PROFILE	406.43	406.12	411.00	HD CO STD DWG D-644 P-119A
EX M 1	SEE PLANA PROFILE	406.04				
M 20	STD MANHOLE	SEE PLANA PROFILE	414.33	414.81	412.50	HD CO STD DWG D-103 P-158
I 24	5' A INLET W-2' G	SEE PLANA PROFILE	408.00/FE W 24 408.75/FE S 20	406.57	410.00	HD CO STD DWG D-644 P-119A
I 25	5' A INLET W-2' G	SEE PLANA PROFILE	405.00	409.00	413.30	HD CO STD DWG D-644 P-119A
S 21	STD END SUPPORT WALL	SEE PLANA PROFILE		394.82		HD CO STD DWG D-44 P-101
I 21	10' A INLET W-2' 8' DOUBLE INLET	SEE PLANA PROFILE		408.65	412.80	HD CO STD DWG D-644 P-119A
G 21	STD 5' INLET GRATE	SEE PLANA PROFILE		409.00	412.90	HD CO STD DWG D-98 P-153
I 28	10' A INLET W-2' 6'	SEE PLANA PROFILE	408.55	408.00	412.80	HD CO STD DWG D-644 P-119A
I 29	10' A INLET W-2' 6'	SEE PLANA PROFILE		408.96	412.80	HD CO STD DWG D-644 P-119A
M 21	STD MANHOLE	SEE PLANA PROFILE	407.50/FE 1 25 408.25/FE 1 25 407.71/FE 1 23	406.45	415.60	HD CO STD DWG D-103 P-158
M 22	STD MANHOLE	SEE PLANA PROFILE	404.14	403.87	412.75	HD CO STD DWG D-103 P-158
M 23	STD MANHOLE	SEE PLANA PROFILE	403.10/FE W 22 401.37/FE W 23A 397.18/FE W 23	401.88	414.75	HD CO STD DWG D-103 P-158
M 24	STD MANHOLE	SEE PLANA PROFILE	396.67/FE C 14	394.30	407.80	HD CO STD DWG D-103 P-158
S 22	STD END SUPPORT WALL	SEE PLANA PROFILE		395.75		HD CO STD DWG D-44 P-101
G 24	STD 5' INLET GRATE	SEE PLANA PROFILE		394.75	406.00	HD CO STD DWG D-98 P-153
M 25	STD MANHOLE	SEE PLANA PROFILE		408.28	412.80	HD CO STD DWG D-103 P-158
I 30	STD 5' INLET GRATE	SEE PLANA PROFILE		409.5		HD CO STD DWG D-54 P-109

LEGEND

- (1-21) MANHOLE NUMBER
- (414.0) TOP ELEVATION
- 417 PROPOSED GRADE
- 420 EXISTING GRADE
- H C 7' C & G HOWARD COUNTY 7' CURB & GUTTER D 40. P 95
- H C BAR CURB HOWARD COUNTY BARRIER CURB D 40. P 95

THIS SHEET IS TO BE USED FOR DRAINAGE DIVIDES ONLY AND NOT TO BE USED FOR CONSTRUCTION

APPROVED: For public water and public sewerage systems Howard County Health Department  
 County Health Officer Date 8-30-72  
 APPROVED: Howard County, Office of Planning and Zoning Date 8-30-72  
 Planning Director Date 8-30-72  
 Director Date 8-25-72  
 Chief, Bureau of Highways Date 8-25-72

DATE 7/26/72  
 SHEET 7126/72  
 SDP 72-98

DRAWN DATE 7-25-72 SCALE 1" = 30'  
 REVISED 7-13-72 3-15-72

KENT COOPER & ASSOCIATES ARCHITECTS  
 3203 GRACE ST. N.W. WASHINGTON D.C.

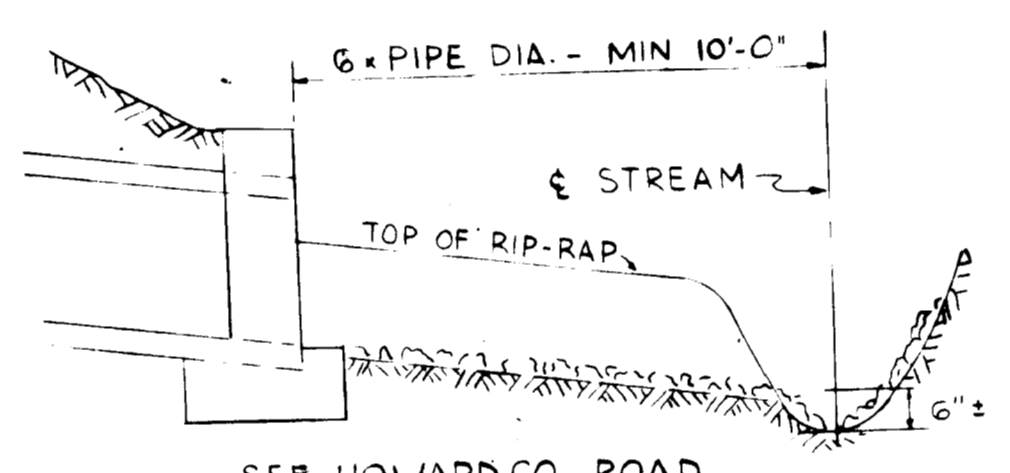
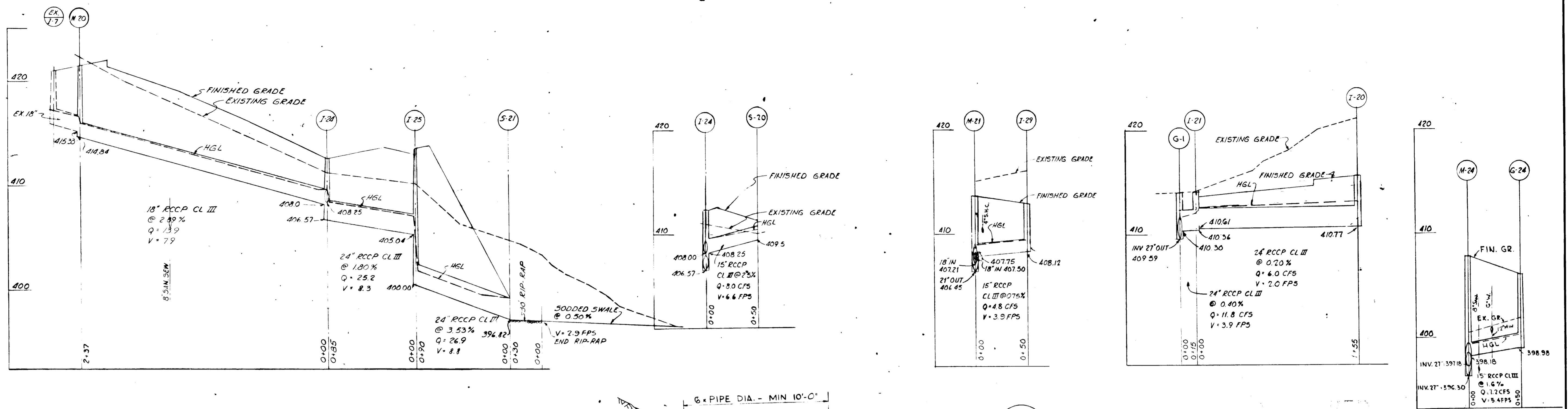
WALTER L. PHILLIPS, INC. CIVIL ENGINEERS  
 901 W. BROAD ST. FALLS CHURCH, VA.

STORM DRAINAGE AREAS  
 SECTION - AREA 5 - PARCEL B  
 LONG REACH VILLAGE CENTER  
 THE COLUMBIA DEVELOPMENT CORPORATION  
 COLUMBIA, HOWARD COUNTY, MARYLAND  
 6th ELECTION DISTRICT

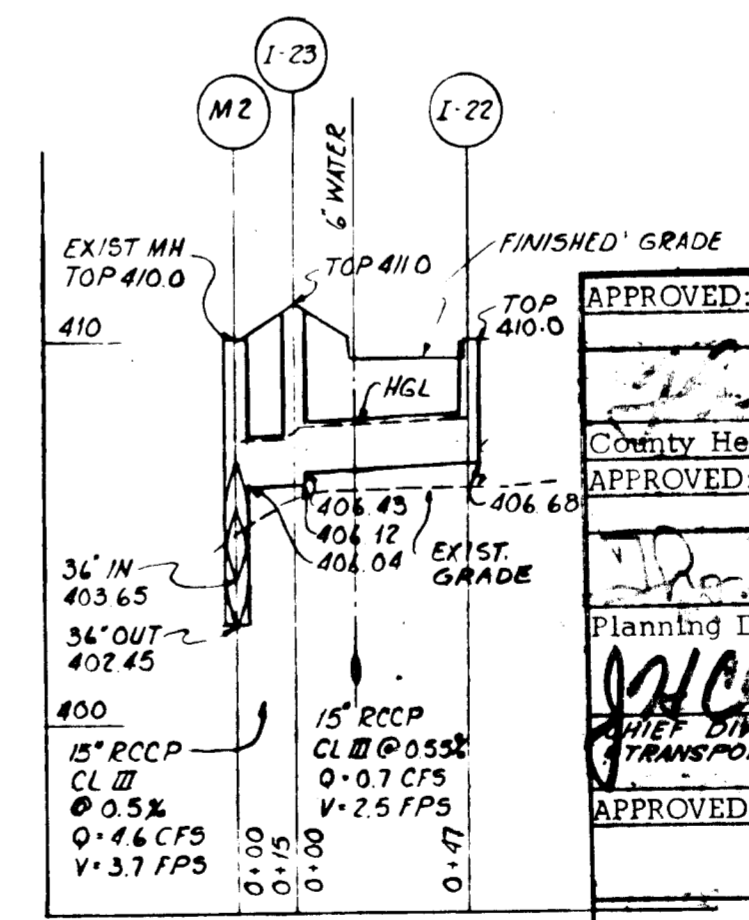
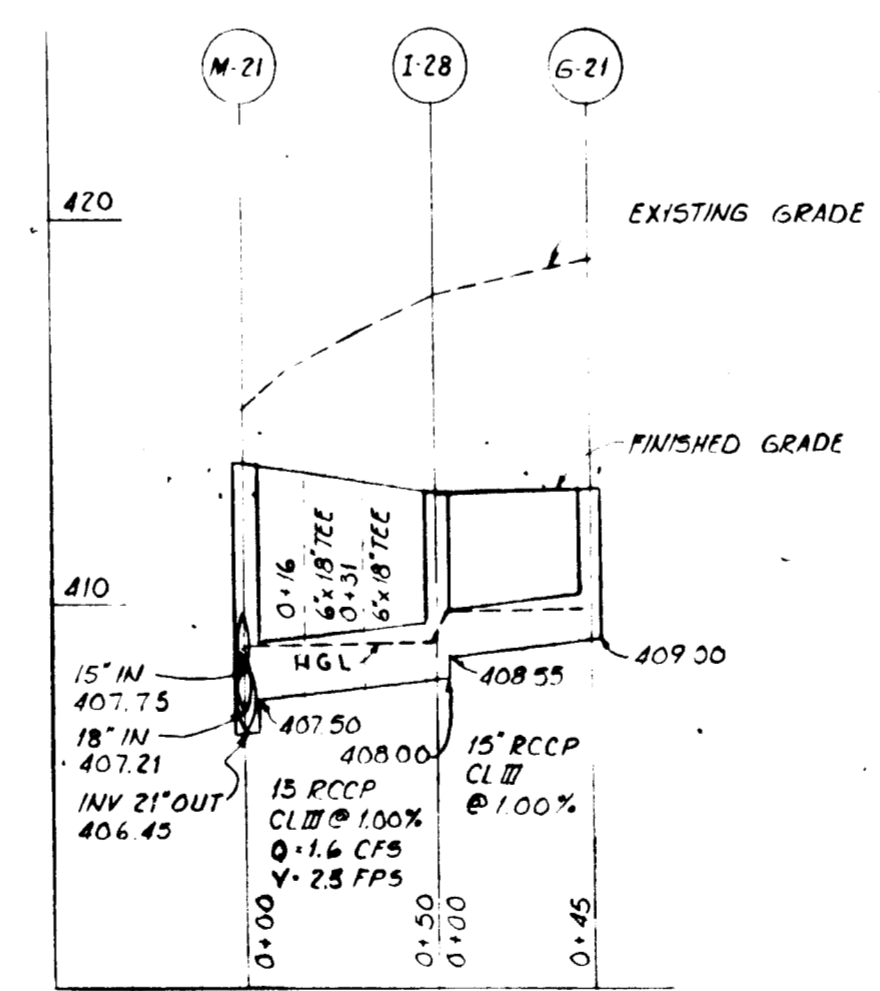
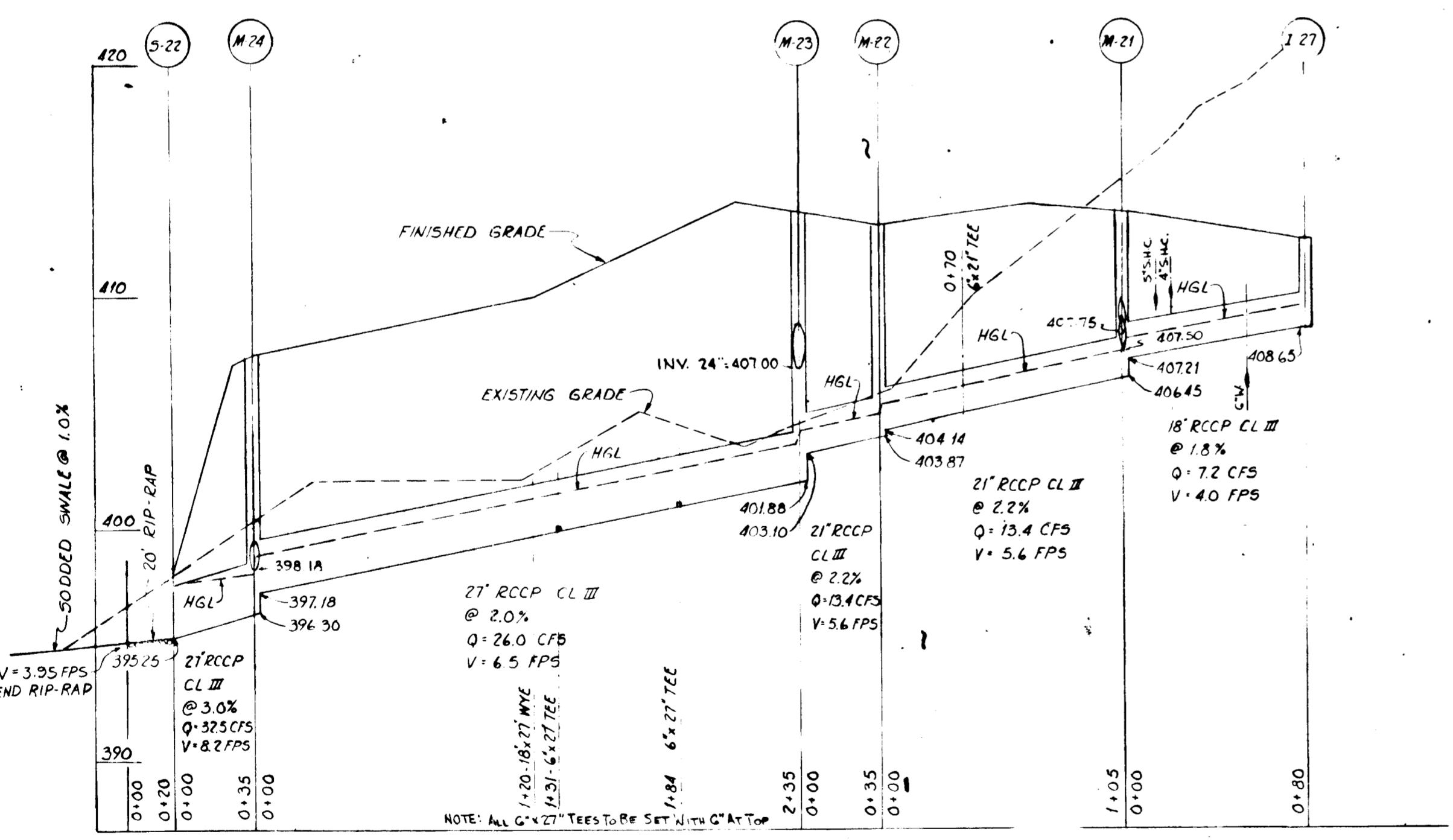
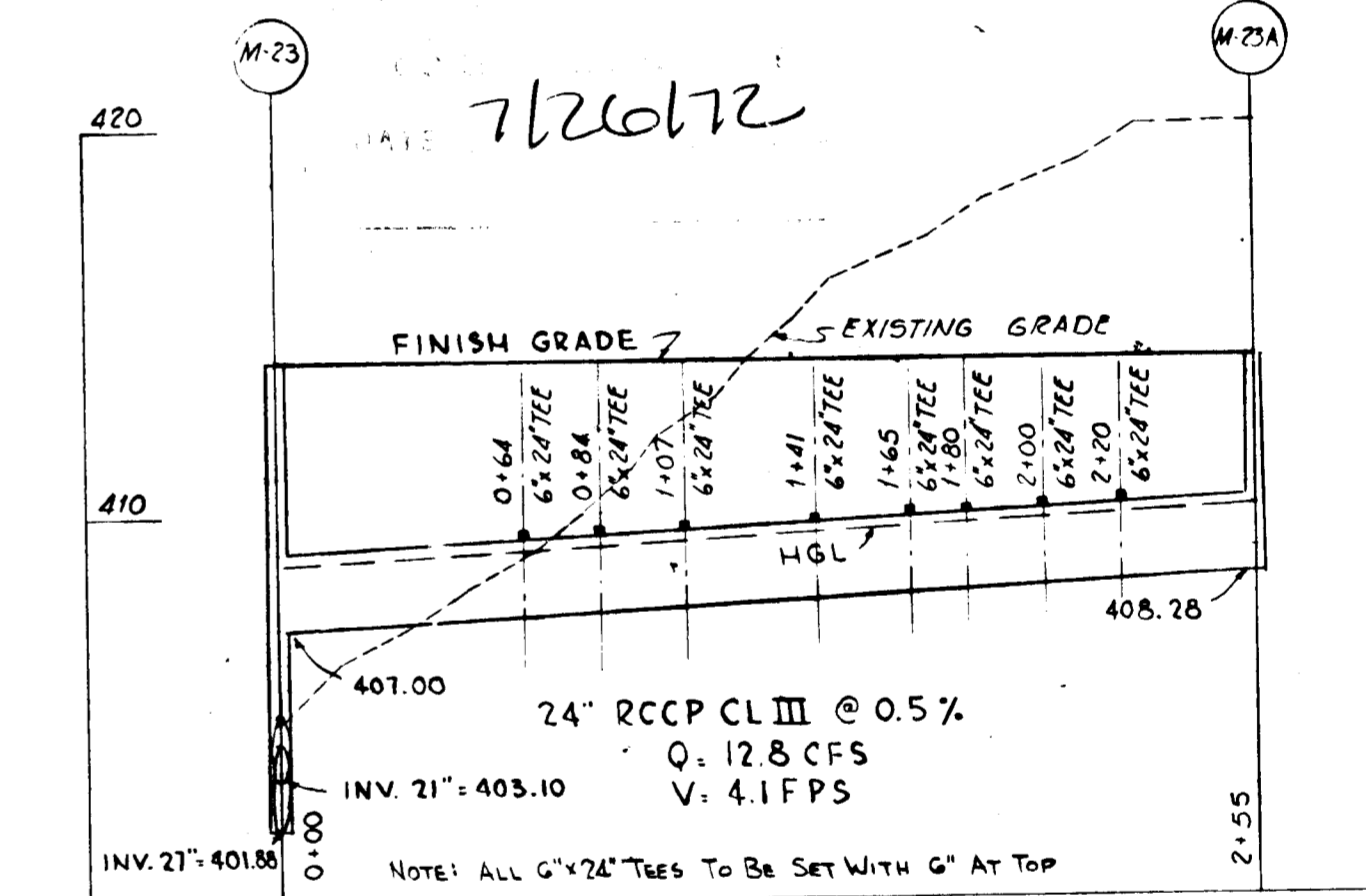
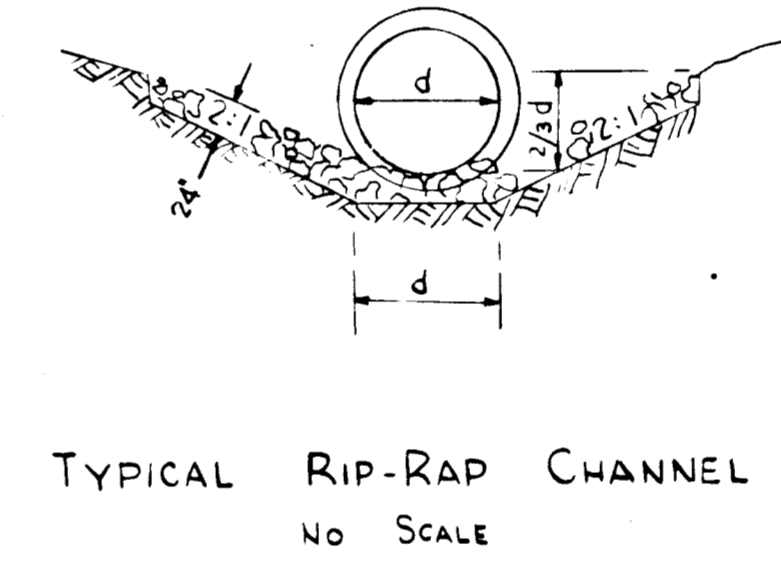
C-3

SDP-72-98C

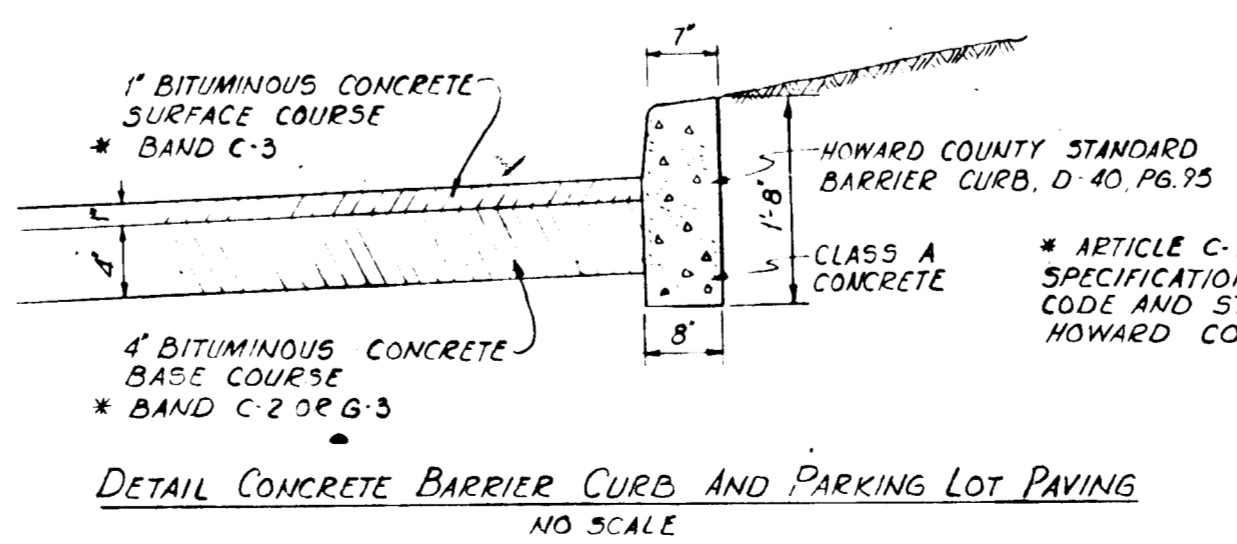
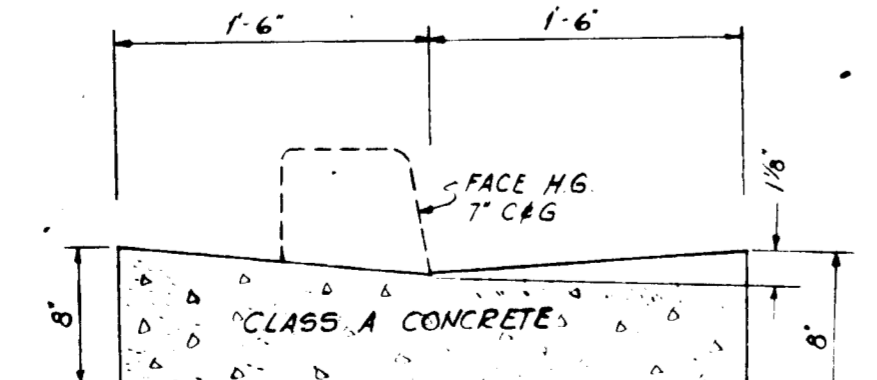
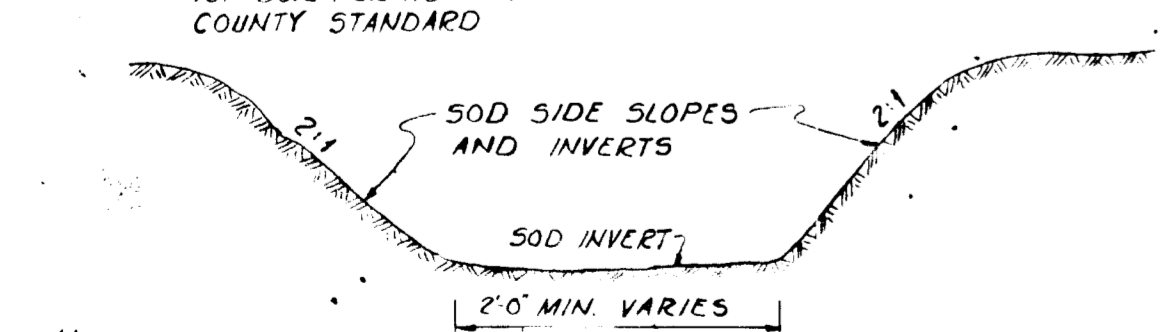




SEE HOWARD CO. ROAD CONSTRUCTION CODE AND STD. SPECIFICATIONS ARTICLE C26-6.



APPROVED: For public water and public sewerage systems Howard County Health Department	Date: 7-10-72
County Health Officer	Date: 7-10-72
APPROVED: Howard County, Office of Planning and Zoning	Date: 8-2-72
Planning Director	Date: 8-2-72
APPROVED: For public water, public sewerage and storm drainage systems and roads Howard County Department of Public Works	Date: 8/2/72
Director	Date: 8-2-72



SDP 72-98

DRAWN	DATE	SCALE
REVISED	9-13-71	7-10-72 1"=5' VER.
	8-2-71	4-15-72 1"=50' HOR.

**KENT COOPER & ASSOCIATES**  
ARCHITECTS  
3203 GRACE ST. N.W. WASHINGTON D.C.

**WALTER L. PHILLIPS, INC.**  
CIVIL ENGINEERS  
301 W. BROAD ST. FALLS CHURCH, VA.

PROFILES & DETAILS  
SECTION 1 ~ AREA 5 ~ PARCEL B  
**LONG REACH VILLAGE CENTER**  
THE COLUMBIA DEVELOPMENT CORPORATION  
COLUMBIA, HOWARD COUNTY, MARYLAND  
6th ELECTION DISTRICT

C-4