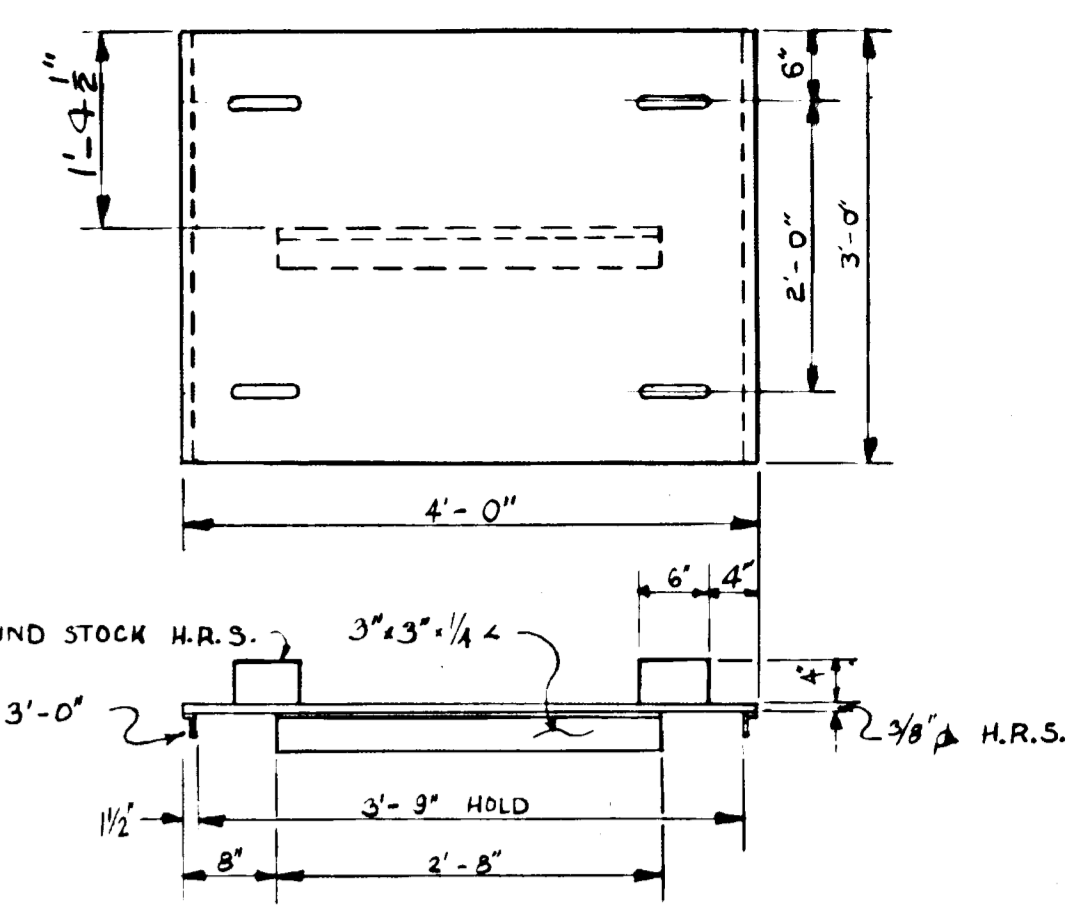
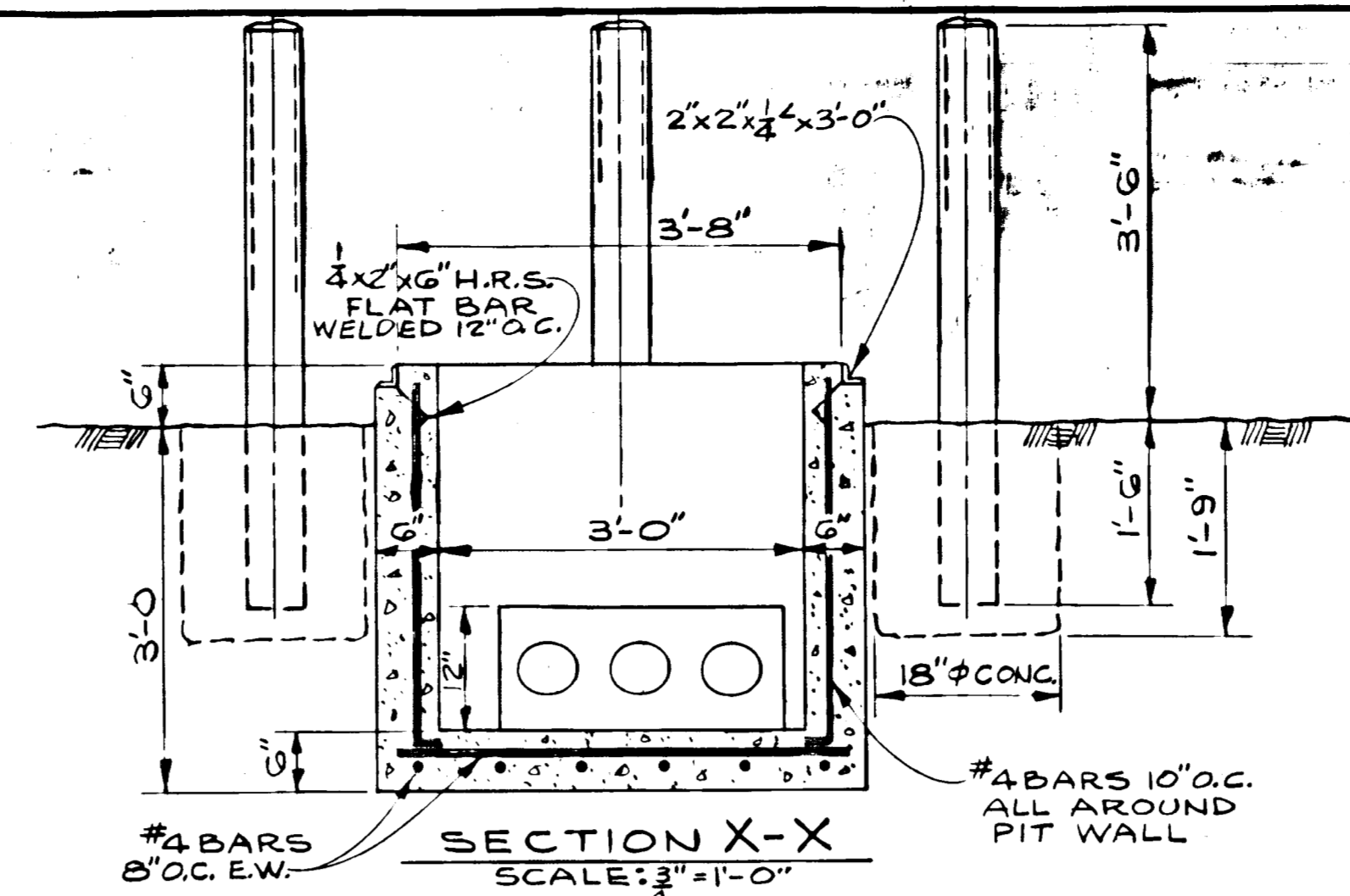
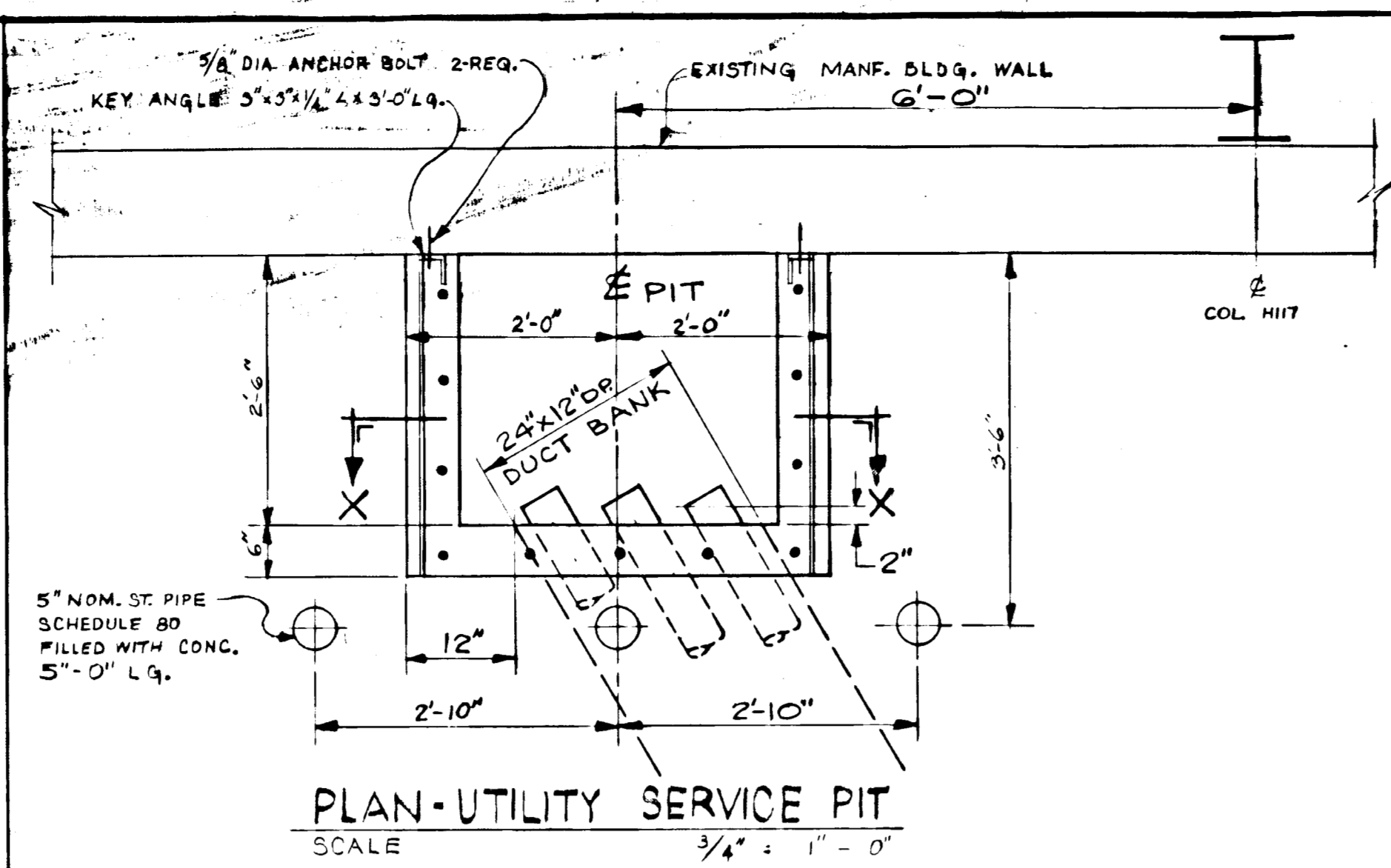


LOCATION PLAN
SCALE: 1" = 1000'



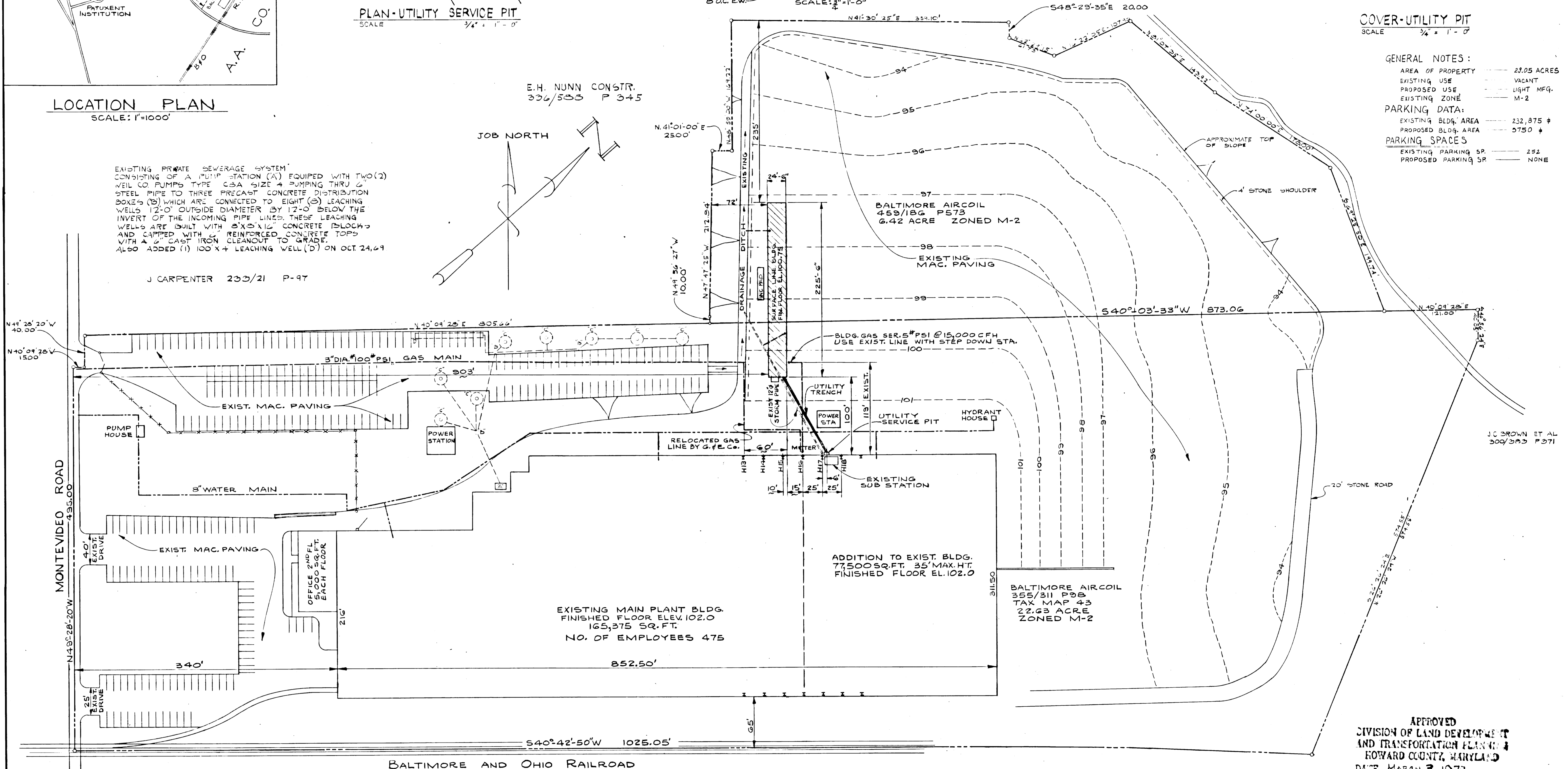
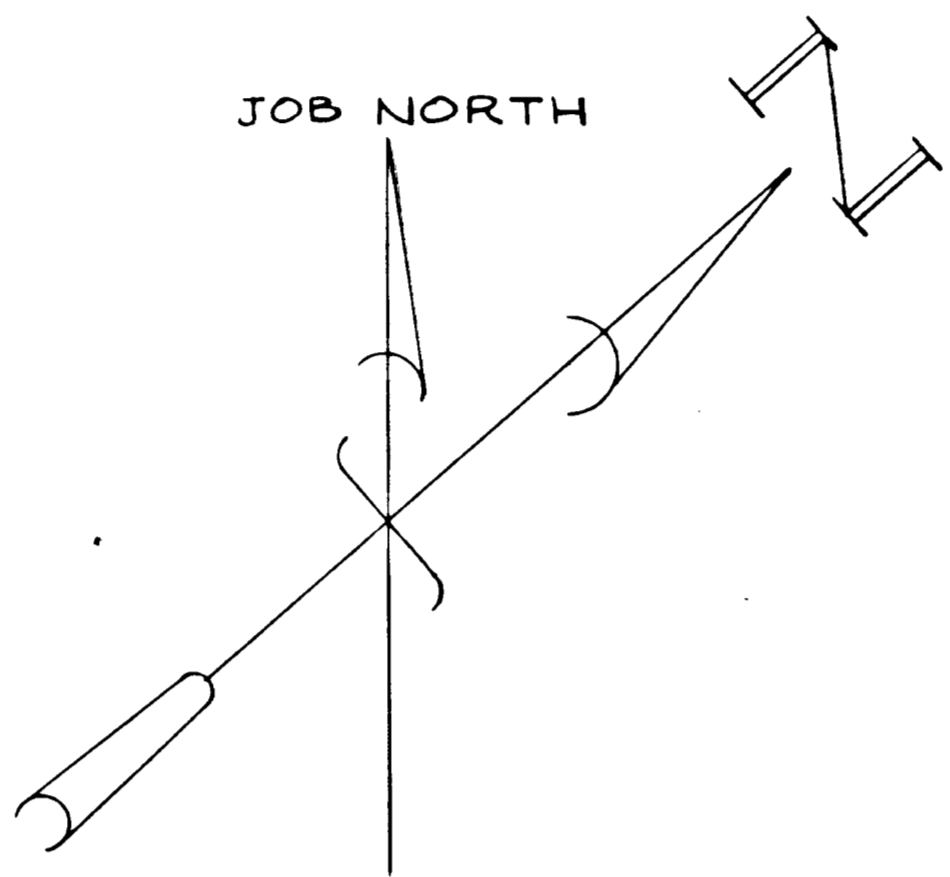
COVER-UTILITY PIT
SCALE: 3/4" = 1'-0"

- GENERAL NOTES:
- AREA OF PROPERTY: 22.05 ACRES
 - EXISTING USE: VACANT
 - PROPOSED USE: LIGHT MFG.
 - EXISTING ZONE: M-2
- PARKING DATA:
- EXISTING BLDG. AREA: 232,875 sq. ft.
 - PROPOSED BLDG. AREA: 5750 sq. ft.
- PARKING SPACES:
- EXISTING PARKING SP: 252
 - PROPOSED PARKING SP: NONE

EXISTING PRIVATE SEWERAGE SYSTEM CONSISTING OF A PUMP STATION (A) EQUIPPED WITH TWO (2) WELLS CO. PUMPS TYPE CSA SIZE 4 PUMPING THRU 6" STEEL PIPE TO THREE PRECAST CONCRETE DISTRIBUTION BOXES (B) WHICH ARE CONNECTED TO EIGHT (8) LEACHING WELLS 12'-0" OUTSIDE DIAMETER BY 12'-0" BELOW THE INVERT OF THE INCOMING PIPE LINES. THESE LEACHING WELLS ARE BUILT WITH 8"x8"x12" CONCRETE BLOCKS AND CAPPED WITH REINFORCED CONCRETE TOPS WITH A 6" CAST IRON CLEANOUT TO GRADE. ALSO ADDED (1) 100' X 4" LEACHING WELL (D) ON OCT 24, 69

J CARPENTER 233/21 P-97

E.H. NUNN CONSTR.
306/503 P 345



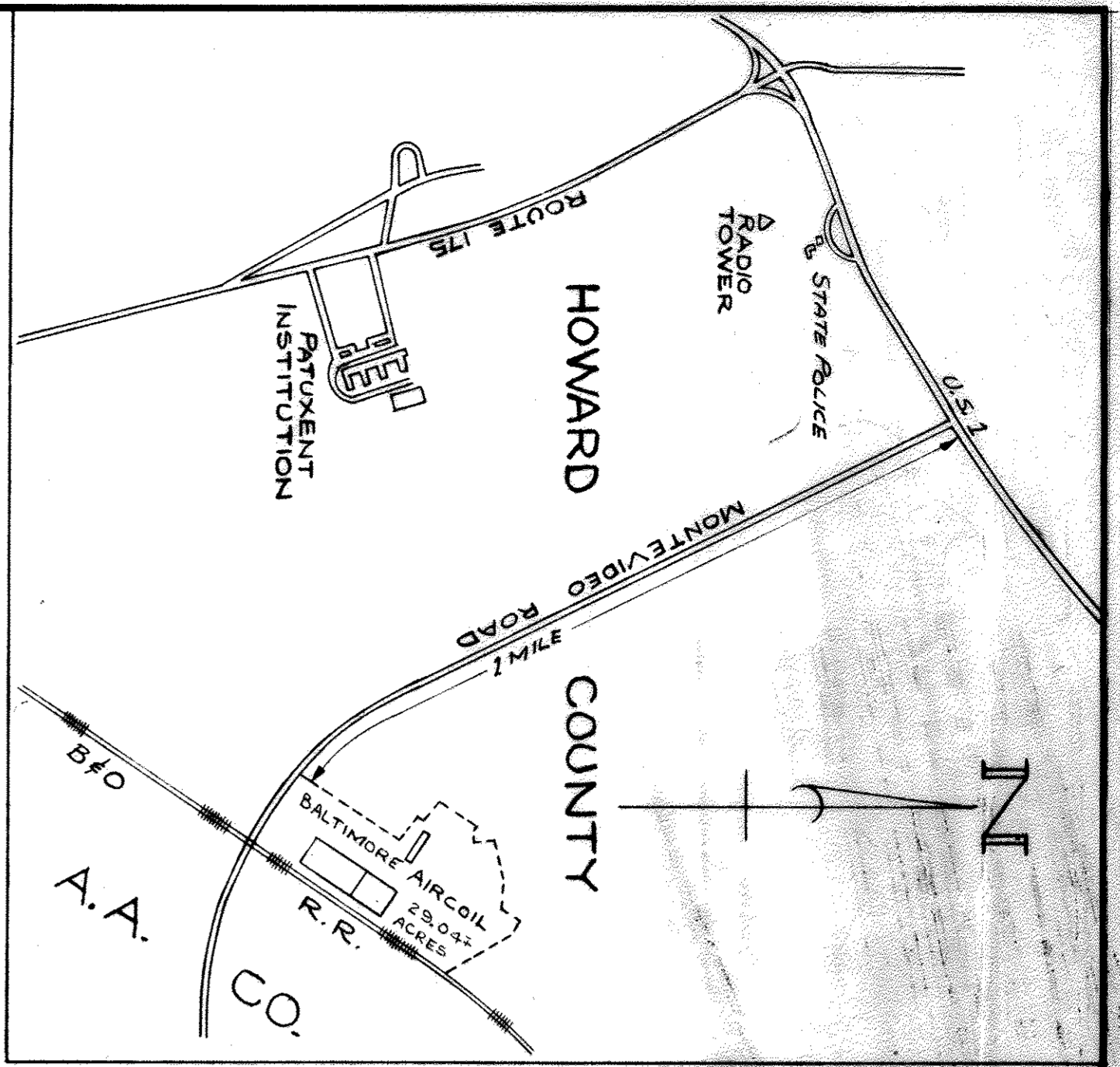
PLOT PLAN
SCALE: 1" = 50'-0"

APPROVED
DIVISION OF LAND DEVELOPMENT
AND TRANSPORTATION PLANNING
HOWARD COUNTY, MARYLAND
DATE: MARCH 3, 1977
J.R. Cleckner

	DATE: FEB 15, 1977	NO.:	REVISIONS:	INITIALS:	DATE:	ISSUED:	DWG. NO.:
	DRAWN: JOHN NEUMAN						C-1
	CHECKED: BARRY BROWN						7213
	APPROVED:						SDP-72-67

Industrial Engineering Co., Inc. 301-233-7210
100 S. DANIELMO STREET, BALTIMORE, MD. 21202

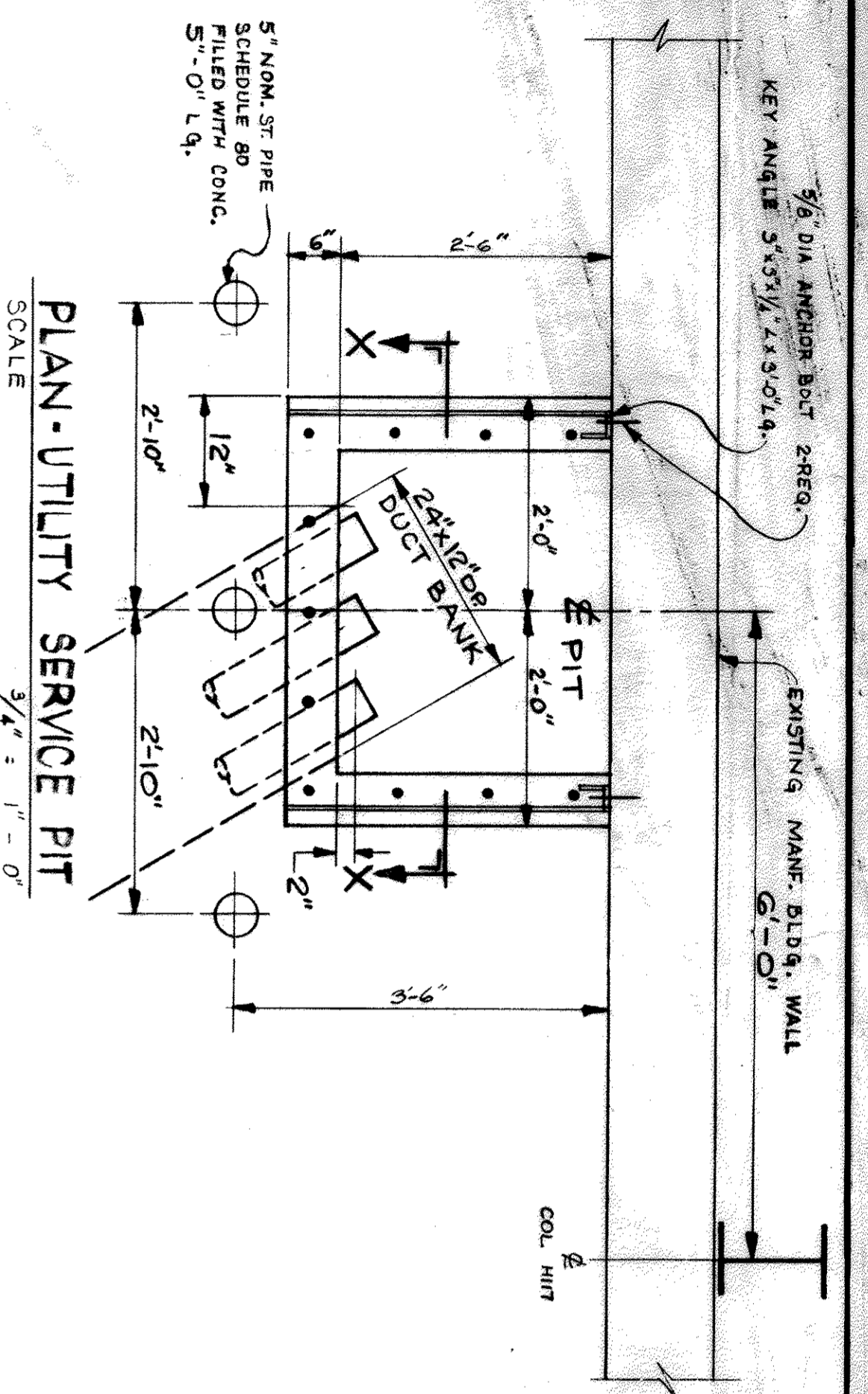
ASBESTOS SURFACE LINE BUILDING
BALTIMORE AIRCOIL CO.
1ST ELECTION DISTRICT
MONTEVIDEO ROAD HOWARD CO. MD.



LOCATION PLAN
SCALE: 1" = 1000'

EXISTING, PRVITE SEWERAGE SYSTEM, CONSISTING OF A PLUMP STATION (A) EQUIPPED WITH TWO (2) WELLS CO PUMPS TYPE C-3A SIZE 4 PUMPING THRU 12" STEEL PIPE TO THREE PRECAST CONCRETE DISTRIBUTION BOXES (B) WHICH ARE CONNECTED TO EIGHT (8) LEACHING WELLS 12" O.D. OUTSIDE DIAMETER BY 12" O.D. BELOW THE INVERT OF THE INCOMING PIPE LINES. THESE LEACHING WELLS ARE BUILT WITH 8"x8"x12" CONCRETE BLOCKS AND CAPPED WITH 4" CAST IRON REINFORCED CONCRETE TOPS WITH A 2" CAST IRON CLEANOUT WELL (D) ON OCT 24, 69 ALSO ADDED (1) 100' X 4' LEACHING WELL (E)

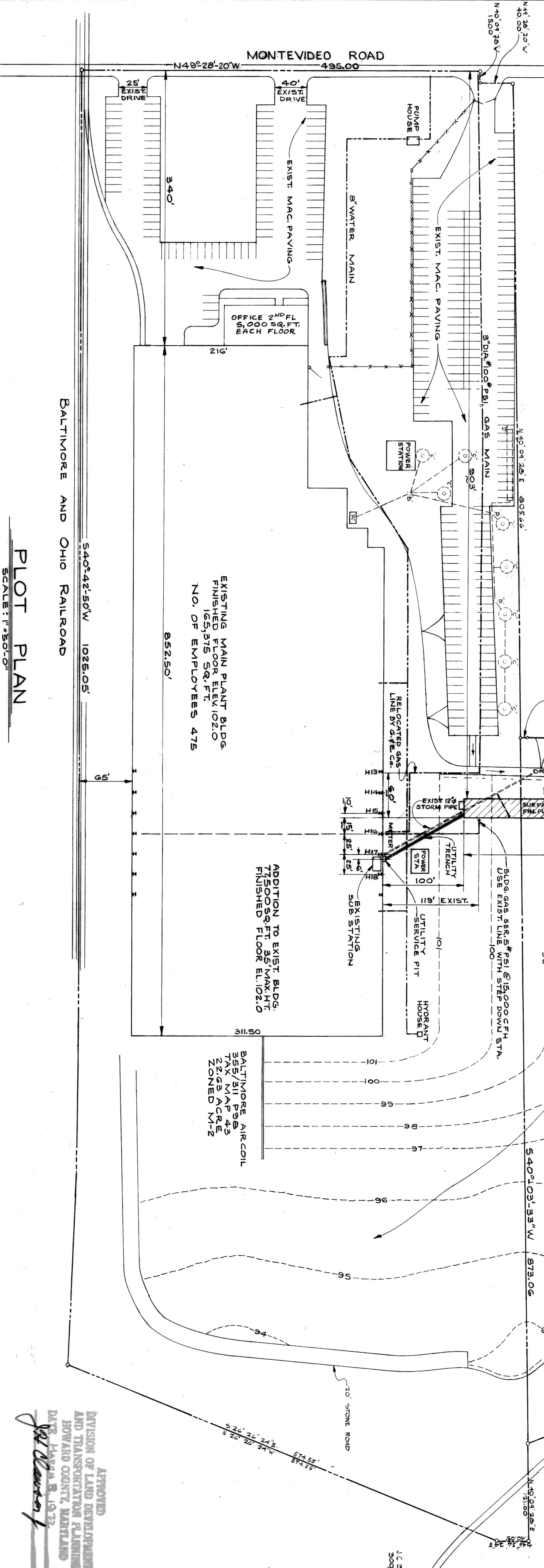
J CARPENTER 2003/21 P-97



PLAN-UTILITY SERVICE PIT
SCALE: 3/4" = 1'-0"

E.H. NUNN CONSTR.
336/555 P-345

JOB NORTH

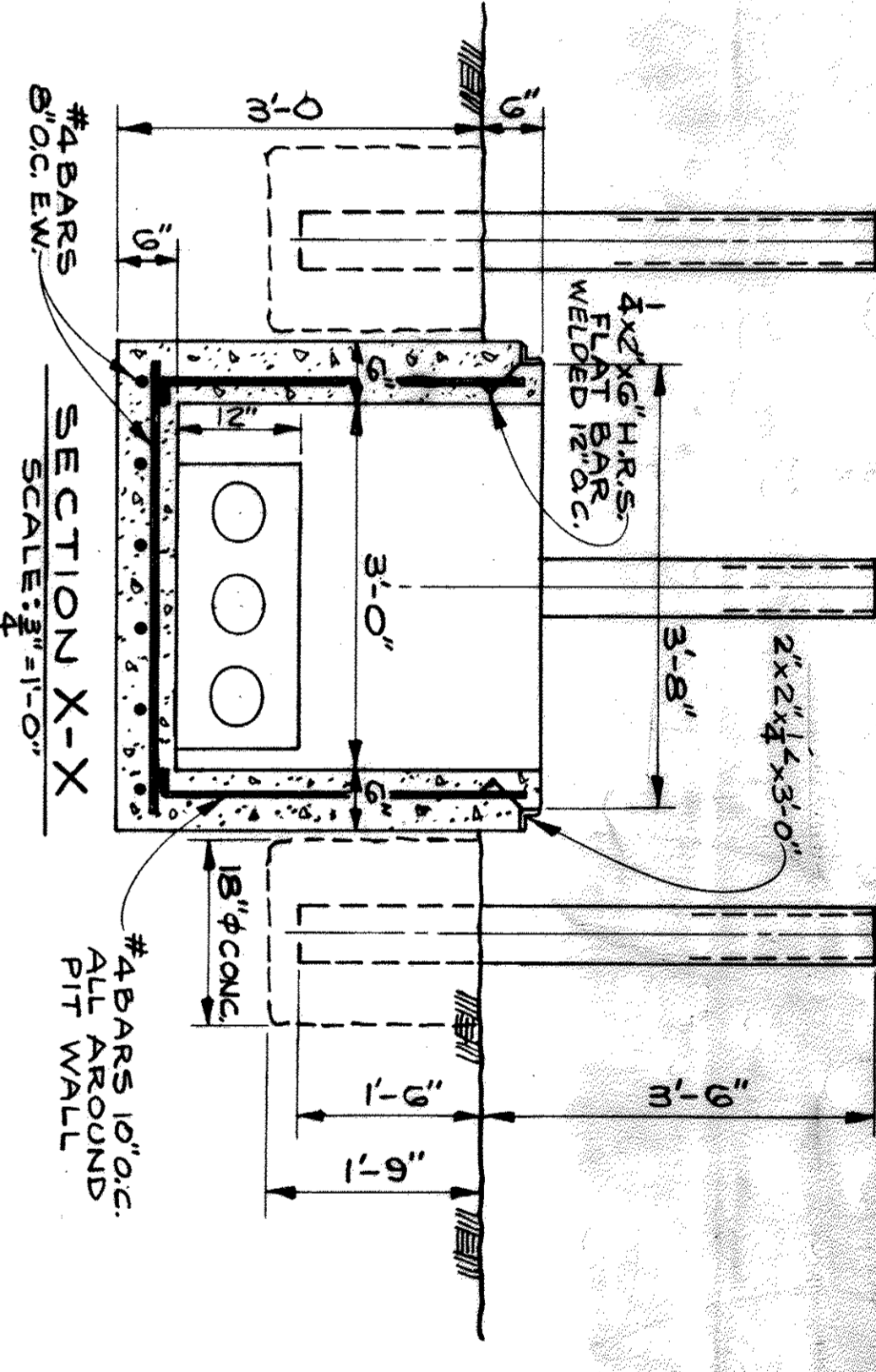


PLOT PLAN
SCALE: 1" = 50'-0"

EXISTING MAIN PLANT BLDG.
FINISHED FLOOR ELEV. 102.0
165,515 SQ. FT.
NO. OF EMPLOYEES 475

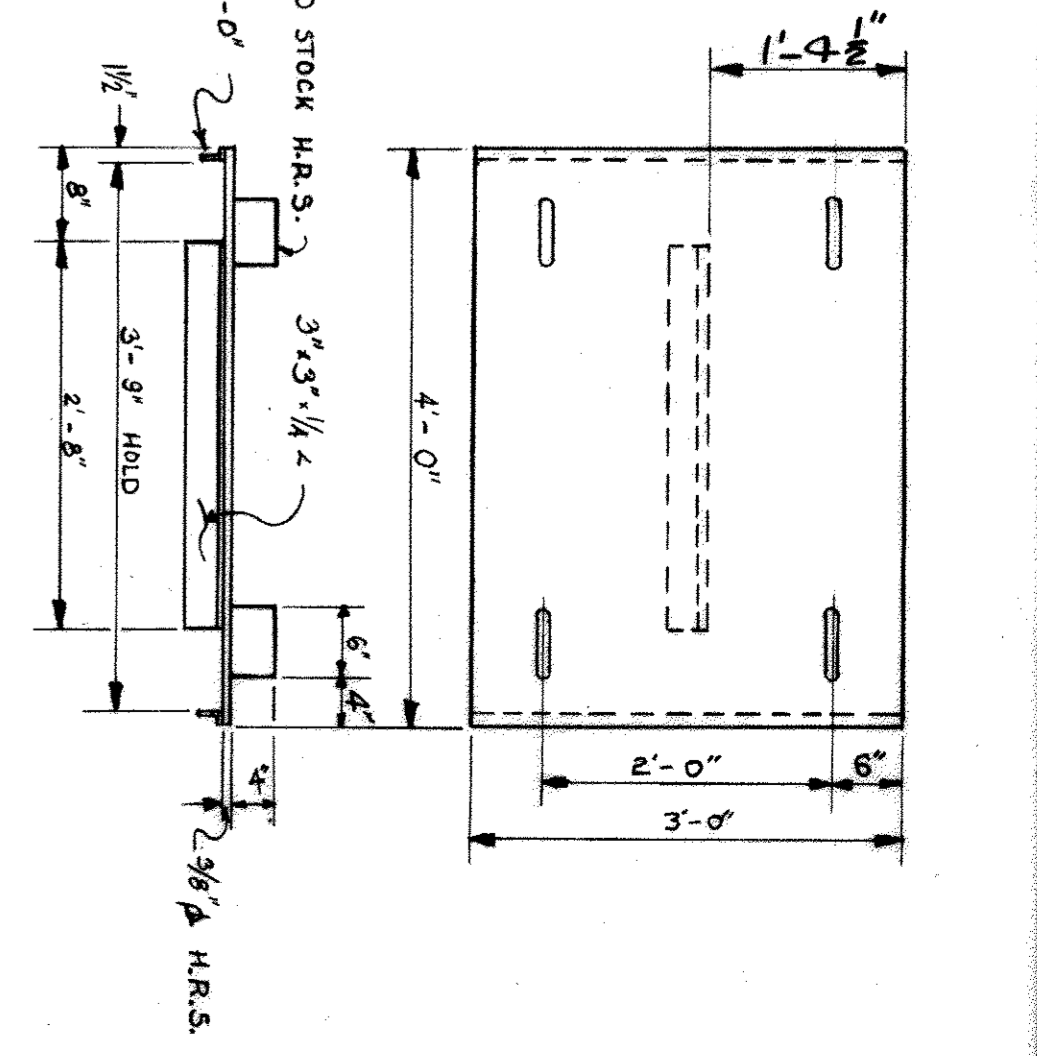
ADDITION TO EXIST. BLDG.
7500 SQ. FT. 35' MAX. HT.
FINISHED FLOOR EL. 102.0

BALTIMORE AIRCOIL
459/186 P-573
6.42 ACRE ZONED M-2
EXISTING MAC. PAVING



SECTION X-X
SCALE: 1/2" = 1'-0"

J C CLECHNER
411/693 P-344



COVER-UTILITY PIT
SCALE: 3/4" = 1'-0"

GENERAL NOTES:
AREA OF PROPERTY: 2205 ACRES
EXISTING USE: VACANT
PROPOSED USE: LIGHT MFG.
EXISTING ZONE: M-2
PARKING DATA:
EXISTING BLDG. AREA: 232,875 sq ft
PROPOSED BLDG. AREA: 5750 sq ft
PARKING SPACES:
EXISTING PARKING SPACES: 252
PROPOSED PARKING SPACES: NONE

APPROVED
DIVISION OF LAND DEVELOPMENT
AND TRANSPORTATION PLANNING
HOWARD COUNTY, MARYLAND
DATE: MARCH 8, 1972
J.C. Clechner

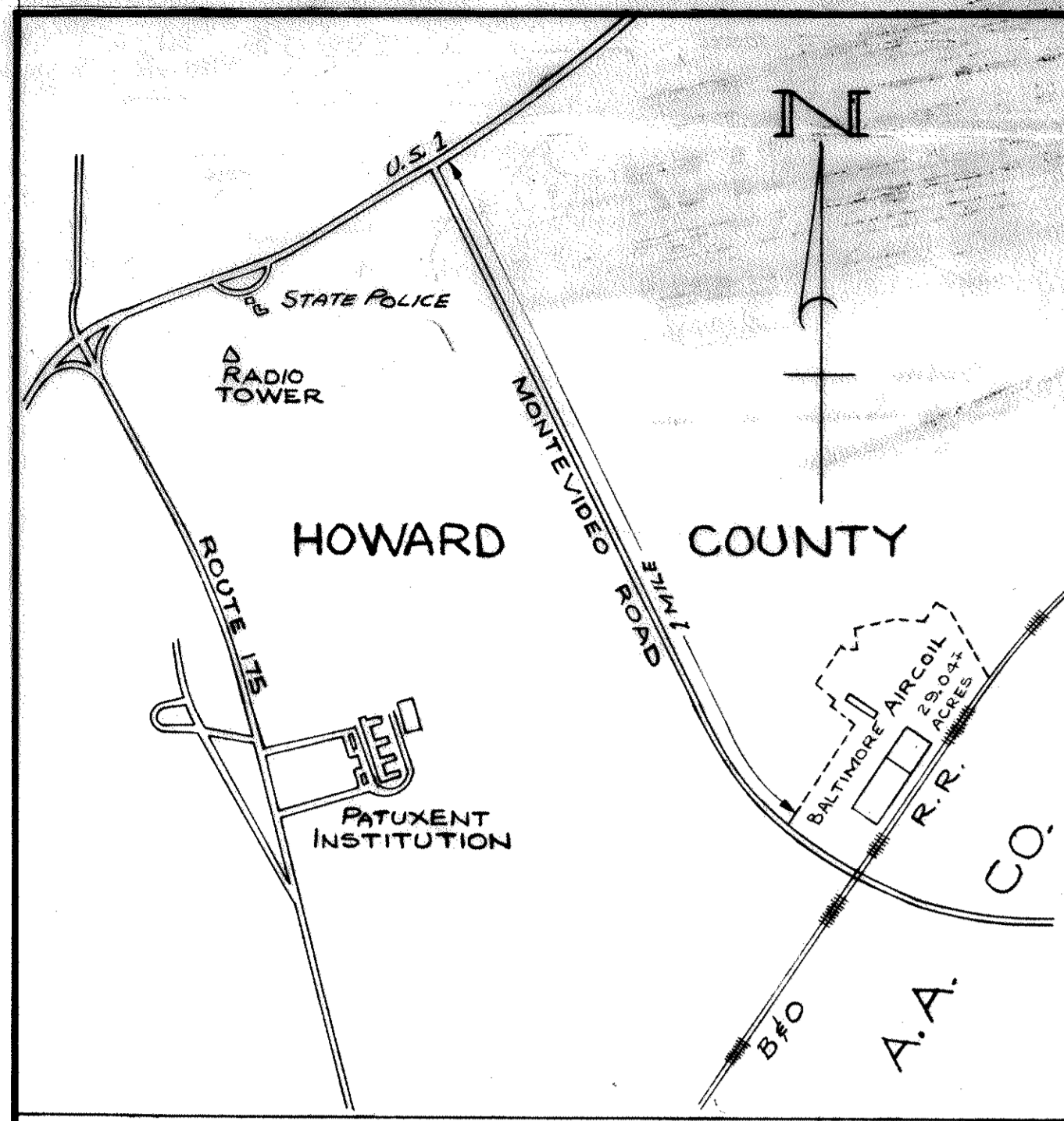
INDUSTRIAL ENGINEERING CO., INC.
BALTIMORE, MARYLAND

DATE: FEB 15, 1972
DESIGNED BY: J. C. CLECHNER
CHECKED BY: J. C. CLECHNER
APPROVED BY: J. C. CLECHNER

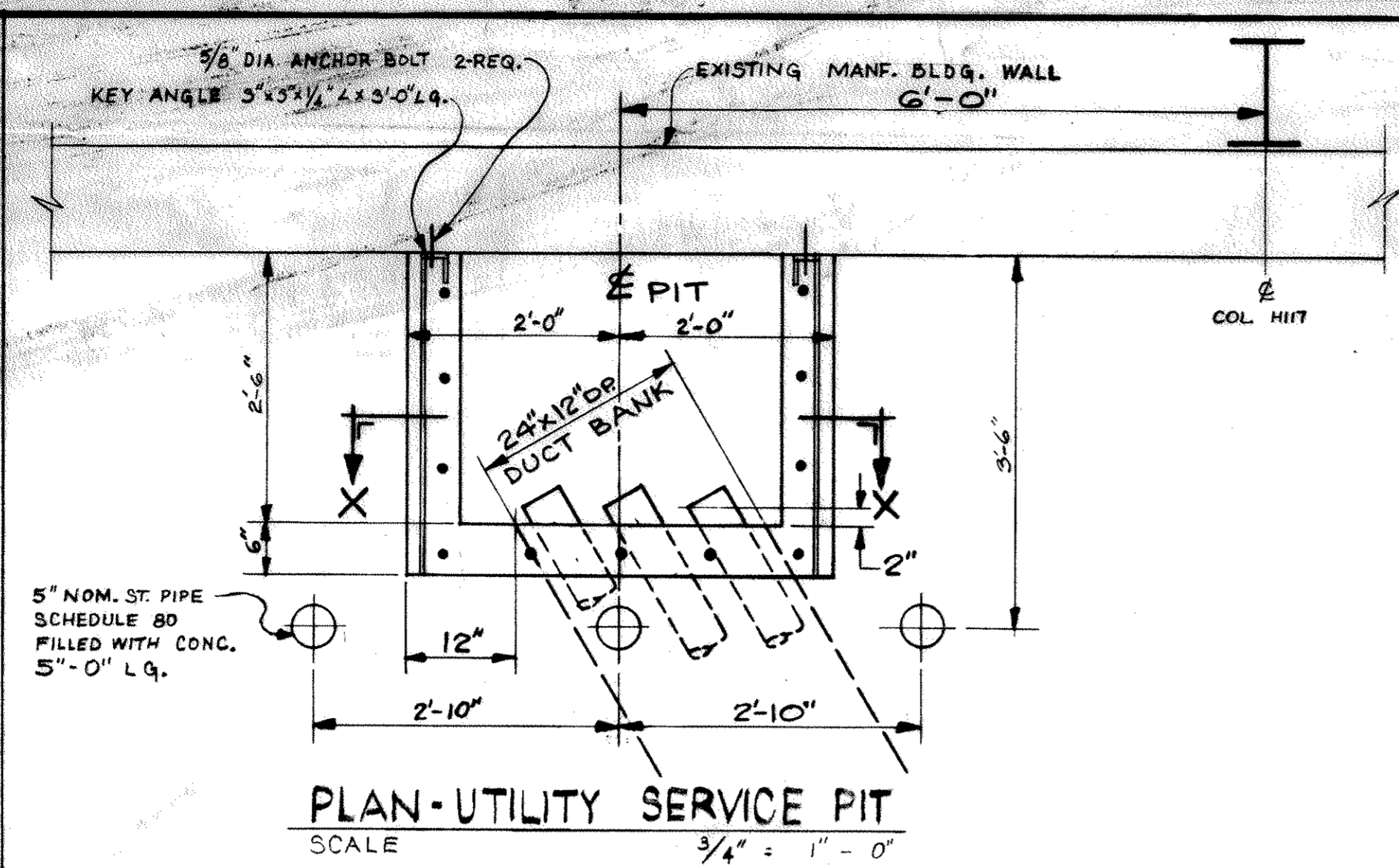
ASBESTOS SURFACE LINE BUILDING
BALTIMORE AIRCOIL CO
1ST ELECTION DISTRICT
MONTEVIDEO ROAD HOWARD CO MD

PLAT PLAN
DATE: FEB 15, 1972

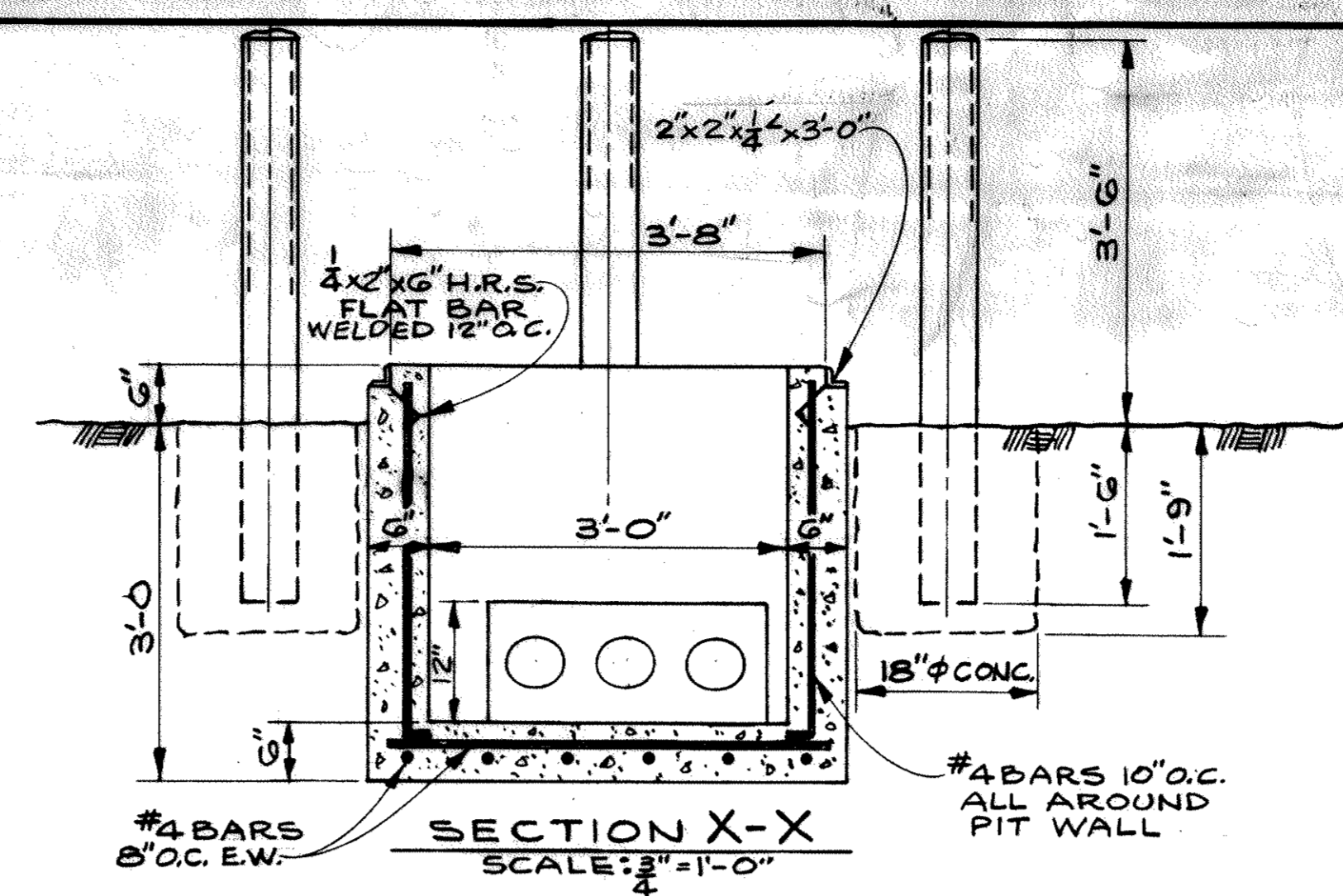
JOB NO. 7213



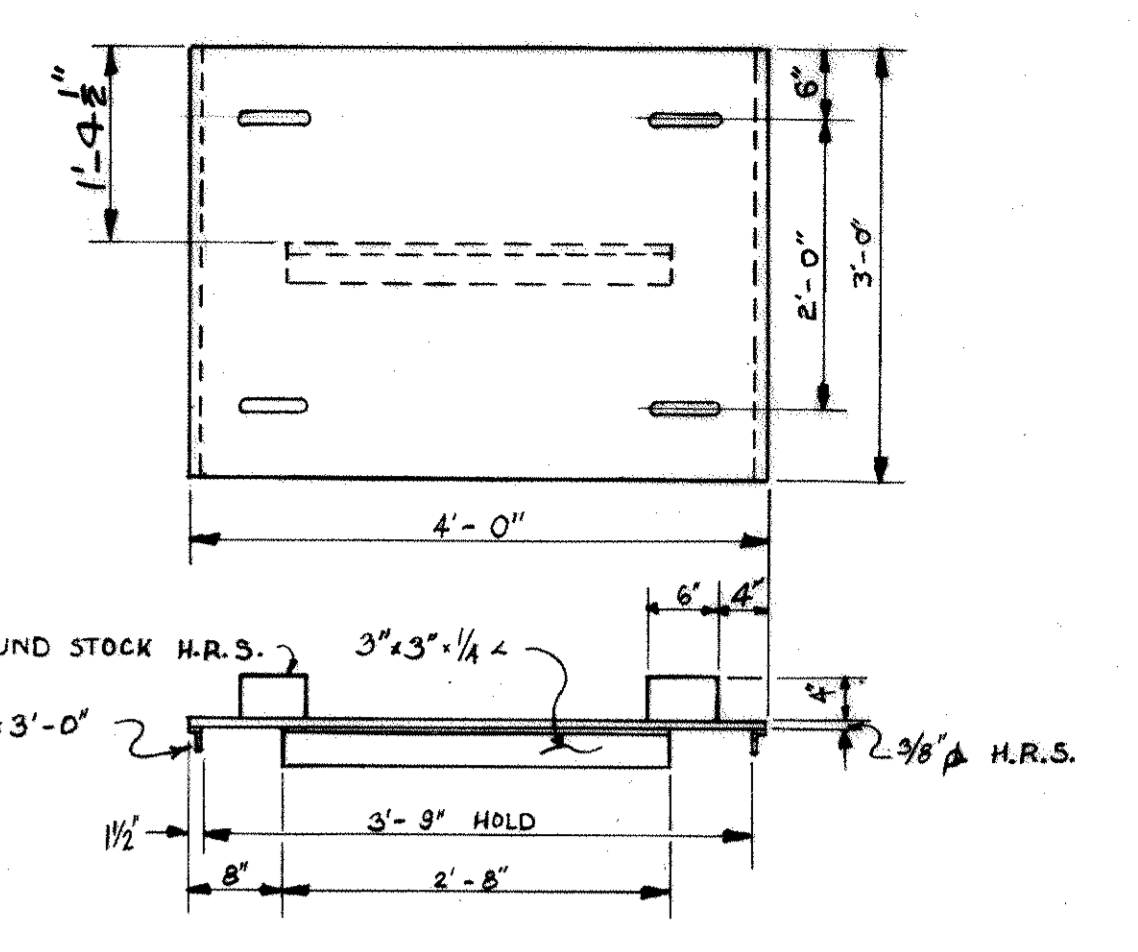
LOCATION PLAN
SCALE: 1"=1000'



PLAN-UTILITY SERVICE PIT
SCALE: 3/4"=1'-0"



SECTION X-X
SCALE: 3/4"=1'-0"

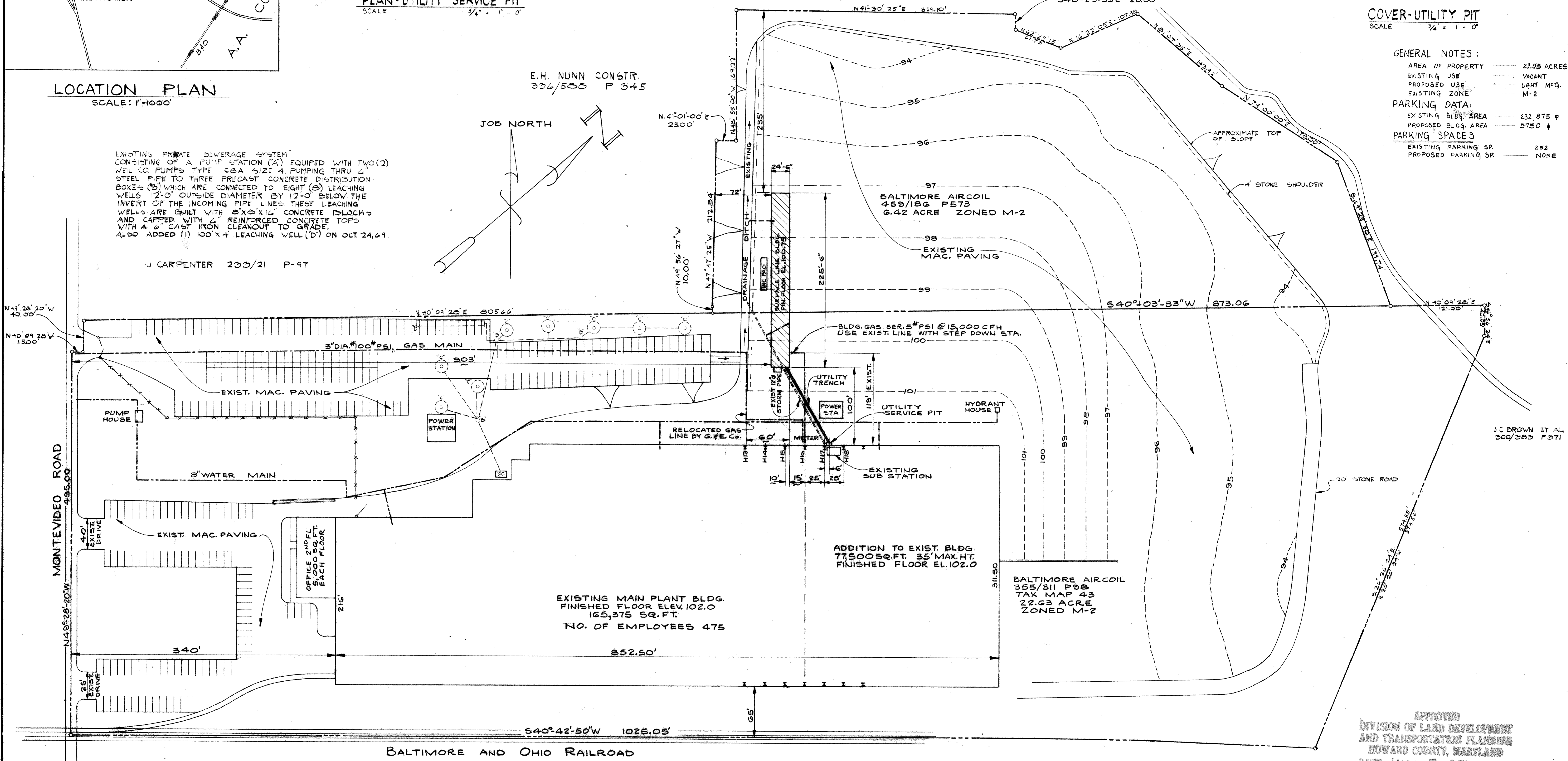
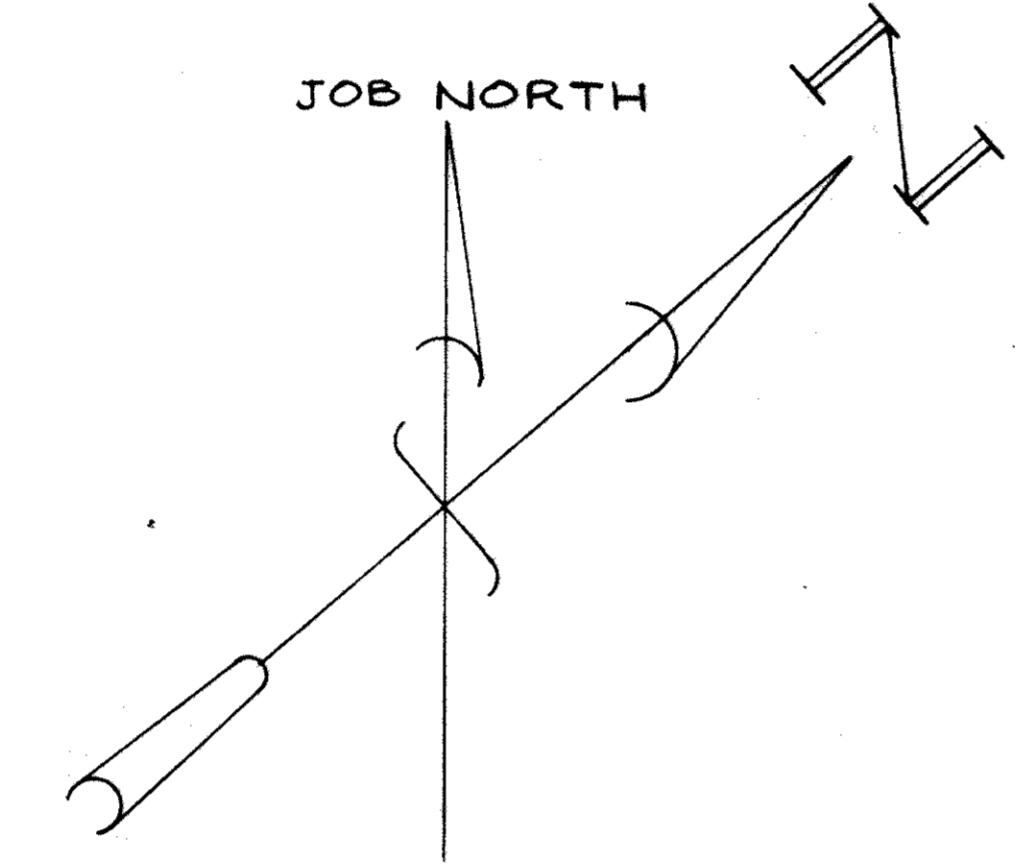


COVER-UTILITY PIT
SCALE: 3/4"=1'-0"

EXISTING PRIVATE SEWERAGE SYSTEM
CONSISTING OF A PUMP STATION (A) EQUIPPED WITH TWO (2)
WEL CO PUMPS TYPE CBA SIZE 4 PUMPING THRU 6"
STEEL PIPE TO THREE PRECAST CONCRETE DISTRIBUTION
BOXES (B) WHICH ARE CONNECTED TO EIGHT (8) LEACHING
WELLS 12'-0" OUTSIDE DIAMETER BY 12'-0" BELOW THE
INVERT OF THE INCOMING PIPE LINES. THESE LEACHING
WELLS ARE BUILT WITH 8" X 8" X 16" CONCRETE BLOCKS
AND CAPPED WITH 6" REINFORCED CONCRETE TOPS
WITH A 6" CAST IRON CLEANOUT TO GRADE.
ALSO ADDED (1) 100 X 4' LEACHING WELL (D) ON OCT. 24, 69

J CARPENTER 233/21 P-97

E.H. NUNN CONSTR.
336/508 P 3-45



PLOT PLAN
SCALE: 1"=50'-0"

- GENERAL NOTES:
- AREA OF PROPERTY: 23.05 ACRES
 - EXISTING USE: VACANT
 - PROPOSED USE: LIGHT MFG.
 - EXISTING ZONE: M-2
- PARKING DATA:
- EXISTING BLDG. AREA: 232,875 sq. ft.
 - PROPOSED BLDG. AREA: 5750 sq. ft.
- PARKING SPACES:
- EXISTING PARKING SP: 252
 - PROPOSED PARKING SP: NONE

APPROVED
DIVISION OF LAND DEVELOPMENT
AND TRANSPORTATION PLANNING
HOWARD COUNTY, MARYLAND
DATE: MARCH 8, 1972
J.H. Clawson

DWG. TYPE PRELIM. OR FINAL STUDY COMM. OR CLOSURE OR OTHER IS AS SHOWN		Industrial Engineering Co., Inc. 300 & DANLAND STREET BALTIMORE, MD. 21202	DATE: FEB 15, 1972 DRAWN: JOHN NEUMAN CHECKED: BARRY BROWN APPROVED:	NO. REVISIONS INITIALS DATE ISSUED	PLOT PLAN ASBESTOS SURFACE LINE BUILDING BALTIMORE AIRCOIL CO 1ST ELECTION DISTRICT MONTEVIDEO ROAD HOWARD CO. MD.	DWG. NO. C-1 JOB NO. 7213