

LOCATION MAP
SCALE: 1" = 2,000'

GENERAL NOTES

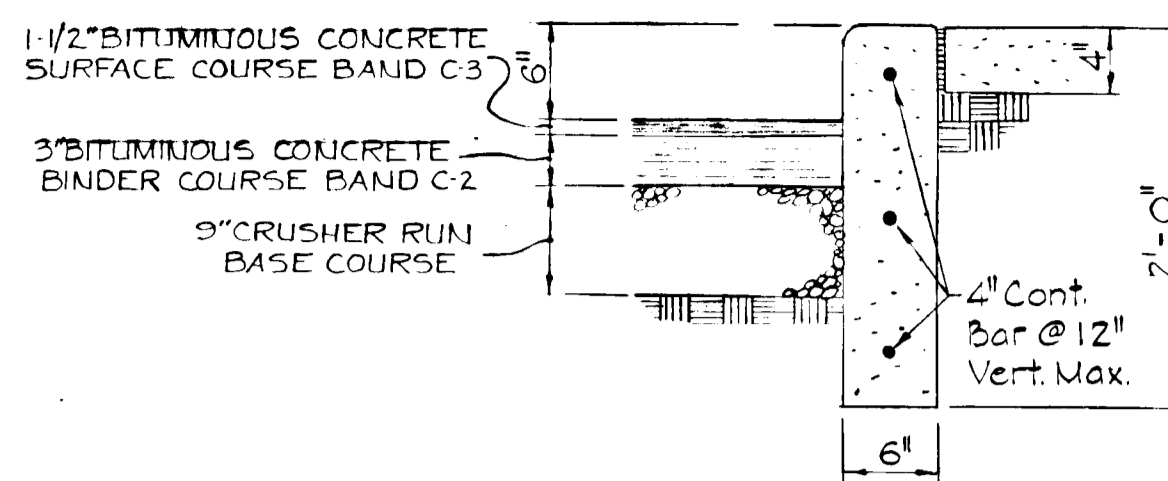
- Limits of work for excavation, grading, seeding and mulching shall be represented by undisturbed contours.
- Contours and elevations are controls only. All grading is to be smooth and continuous.
- Elevations on buildings and on parking and other paved surfaces indicate finished surface grades. Make adjustments for top soil, slabs and paving thicknesses as appropriate.
- See architectural drawings for building dimensions.
- Grade at inlets 1₁ & 1₂ to provide positive flow to the inlets.
- Public water is available and shall be provided. Sanitary sewer shall be private.
- Location of existing utilities is approximate only.
- Report discrepancies to the engineer immediately.
- Except where otherwise noted all construction materials and details shall be in accordance with the latest revisions of the Howard County Road Construction Code and standard specifications.
- Contractor shall notify all affected utility companies at least three days prior to starting construction operations.
- 1 sign only will be placed on face of building.

PARKING NOTES

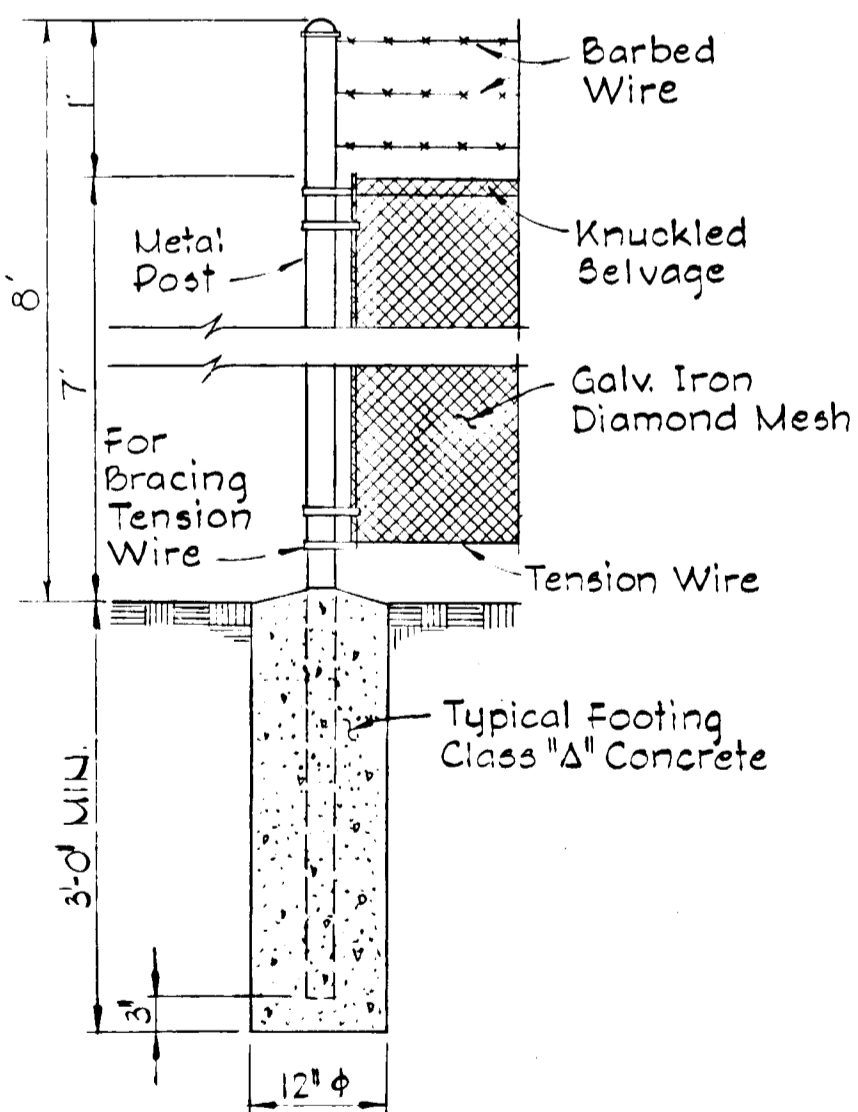
No. of Employees: 12
No. of Parking Spaces Required: 12 + 2
No. of Parking Spaces Provided: 8

SEDIMENT CONTROL NOTES

- The developer shall notify the Howard County Soil Conservation District at least 24 hours prior to beginning any construction shown hereon. Tel. 465-3180.
- Sediment control measures must be installed prior to grading operations.
- Sediment control measures shown on plan are not to be removed except with permission of soil conservation district.
- All areas disturbed by grading or contractors operation not being paved shall be topsoiled, seeded and mulched immediately following earthwork operations in accordance with the following:
 - Place 3" (inch) compacted layer of topsoil to finished grade.
 - Spread pulverized dolomitic limestone at the rate of 1 ton/acre.
 - Spread 10-10-10 commercial grade fertilizer at the rate of 1000 lbs./acre and immediately disc into topsoil to a depth of 3 inches.
 - Seed prepared areas at the rate of 180 lbs./acre, using Kentucky 31 Fescue and 20 lbs./acre Annual Rye Grass.
 - Mulch all areas immediately after seeding with unweathered small grain straw or hay at the rate of 1.5 ton/acre; spray mulch with emulsified alphalt at the rate of 0.24 gals./sq. yd.



CU23 DETAIL
SCALE: 1" = 1'-0"



CHAIN LINK FENCE DETAIL
SCALE: 3/4" = 1'-0"

PROFESSIONAL ENGINEER

I certify that the plan of development and the plan for soil erosion and sediment control meets the requirements standards and specifications of the Howard Soil Conservation District.

Beverly M. Johnson
BEVERLY M. JOHNSON, Reg. 3407

HOWARD SOIL CONSERVATION DISTRICT

This development plan has been approved for soil erosion and sediment control by the HOWARD SOIL CONSERVATION DISTRICT.

Reviewed: *Sam R. Anderson* 3-6-72
District Conservationist Date

Approved: *Robert W. Zickm* 3-6-72
Howard Soil Conservation District Date

DEVELOPER

I certify that all development and /or construction will be done according to the plan of development and the plan soil erosion and sediment control.

By: *Charles J. Sany* 12/29/71
Signature Date

PURDUM & JESCHKE
CONSULTING ENGINEERS
AND LAND SURVEYORS
1023 N CALVERT STREET
BALTIMORE, MARYLAND

OWNER: GARVEY PLUMBING & HEATING CO.
DEVELOPER: M2. C. GODFREY GARVEY
2918 CENTER DRIVE
ELLCOTT CITY, MARYLAND

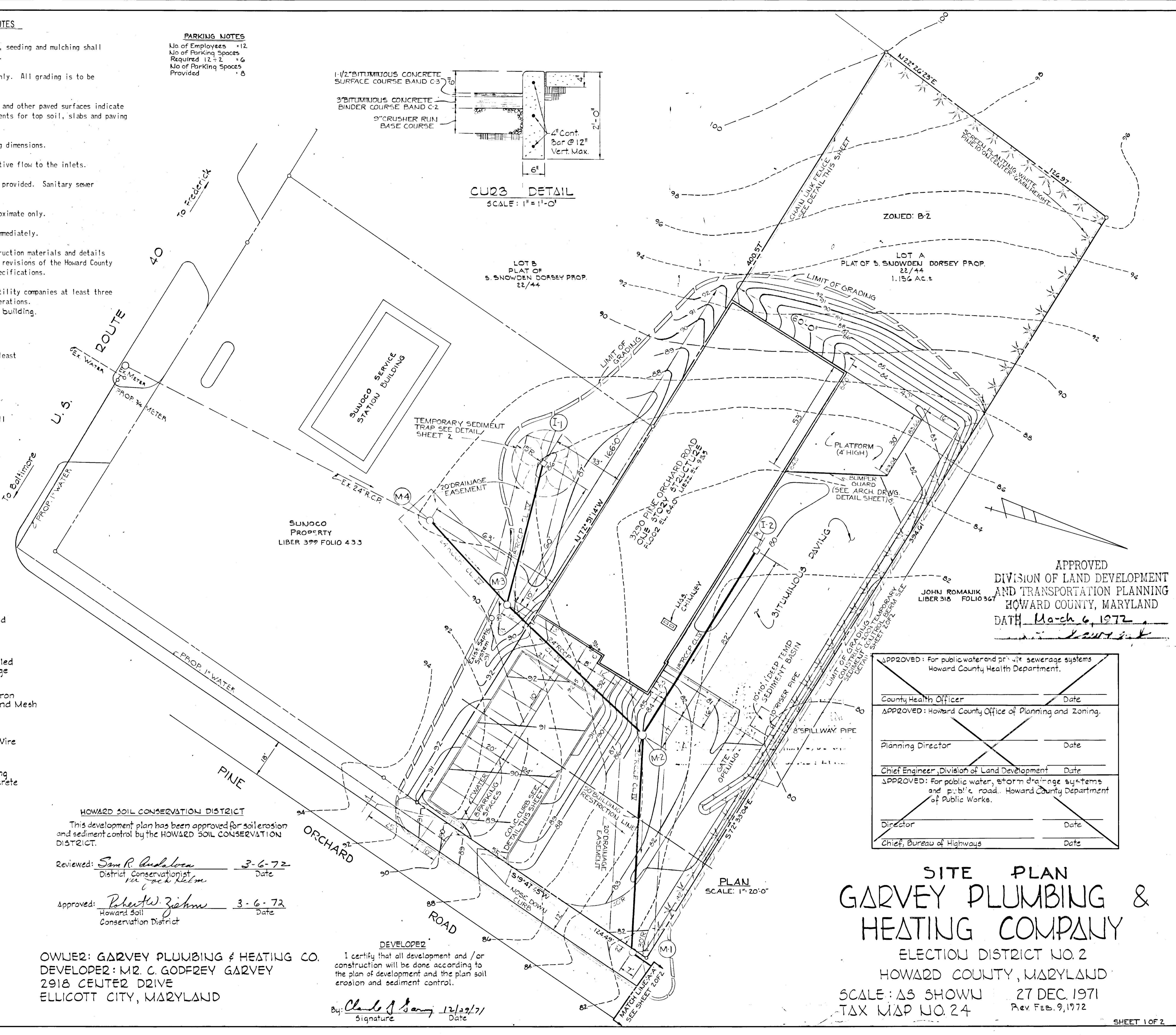
SITE PLAN
GARVEY PLUMBING &
HEATING COMPANY

ELECTION DISTRICT NO. 2
HOWARD COUNTY, MARYLAND
SCALE: AS SHOWN 27 DEC. 1971
TAX MAP NO. 24 Rev. Feb. 9, 1972

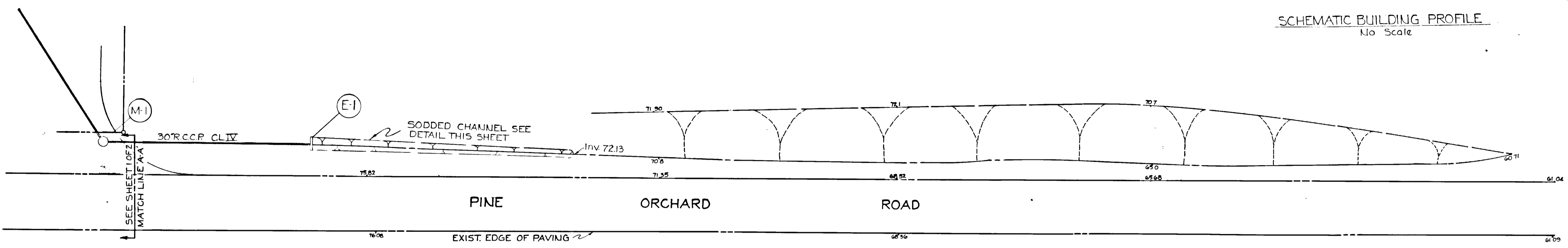
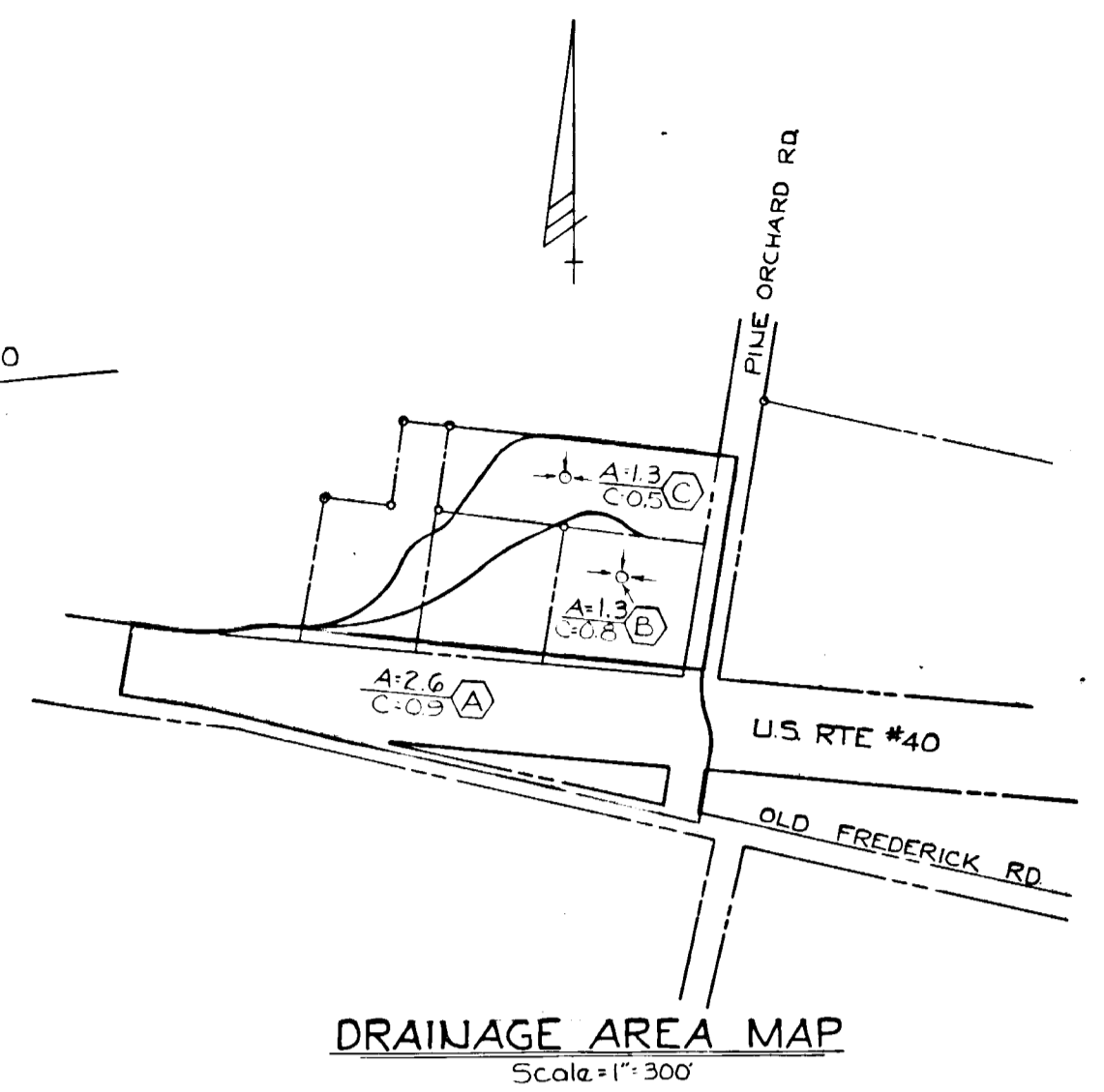
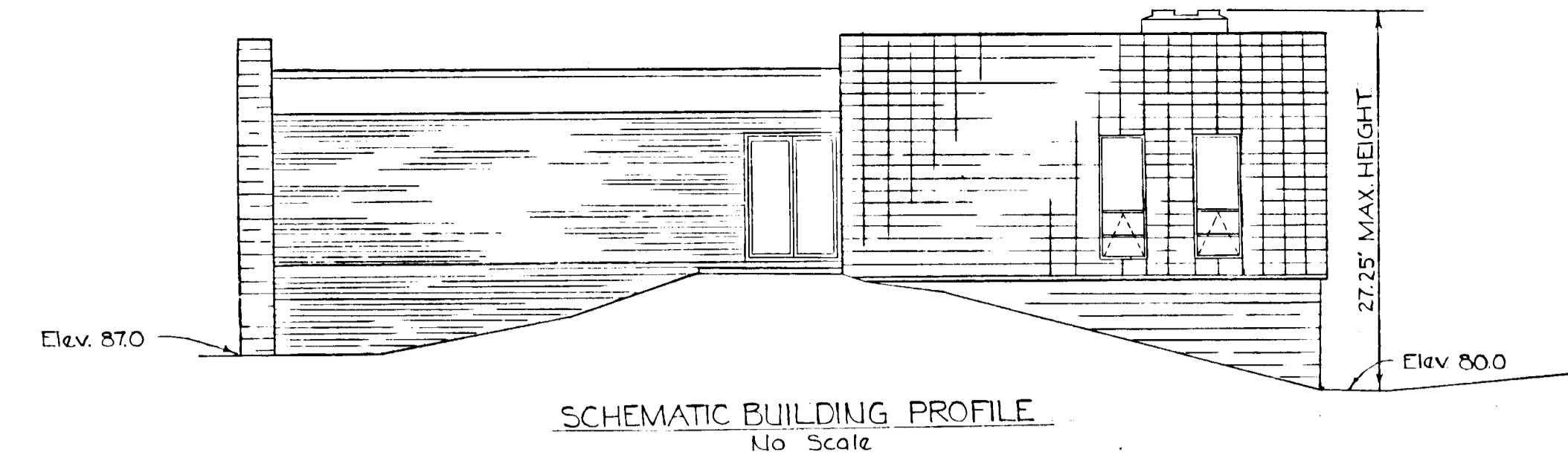
APPROVED
DIVISION OF LAND DEVELOPMENT
AND TRANSPORTATION PLANNING
HOWARD COUNTY, MARYLAND

DATE: March 6, 1972

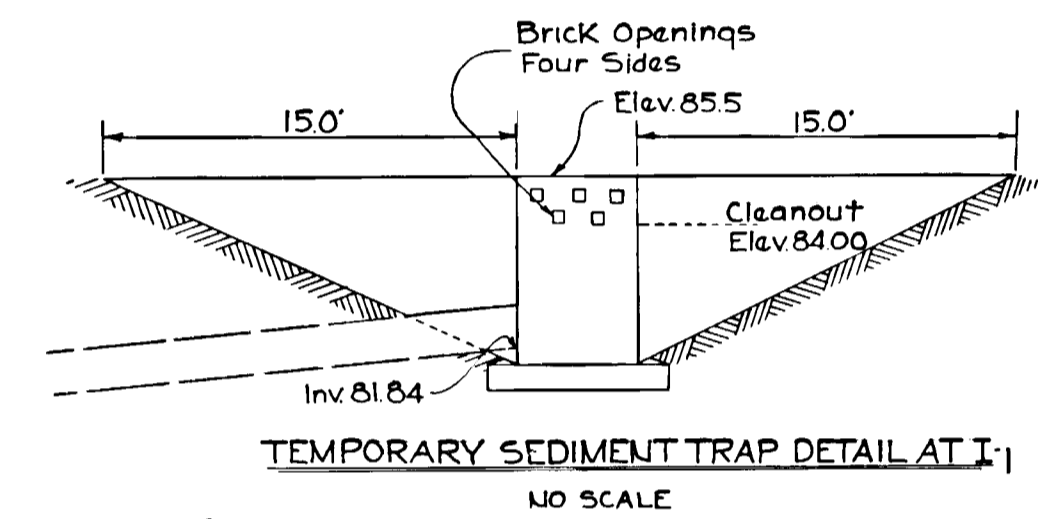
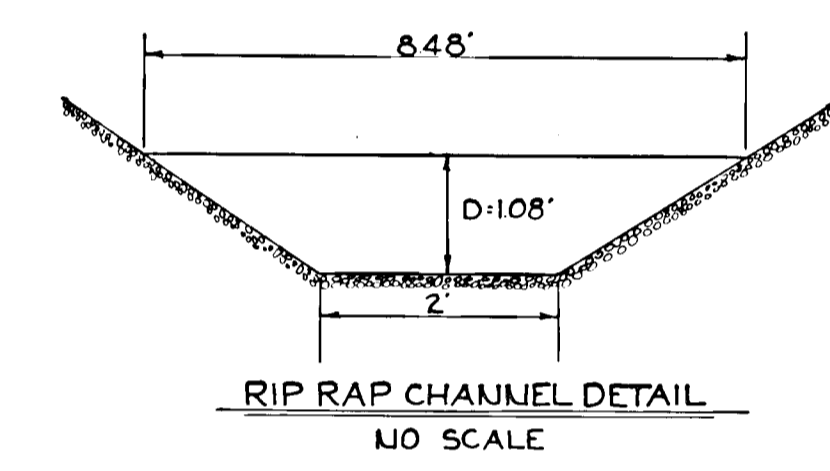
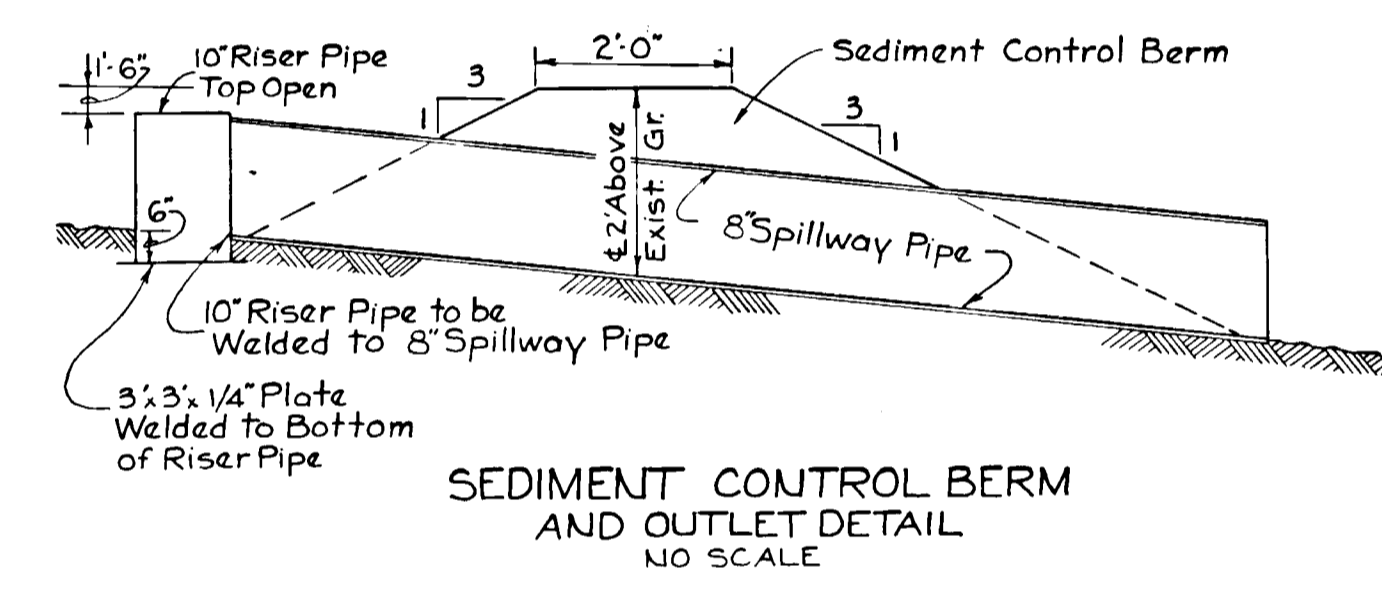
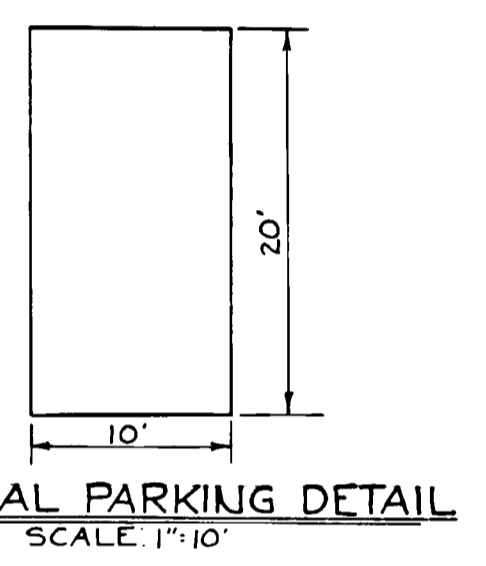
APPROVED: For public water and private sewerage systems Howard County Health Department.	
County Health Officer	Date
APPROVED: Howard County Office of Planning and Zoning.	
Planning Director	Date
Chief Engineer, Division of Land Development	Date
APPROVED: For public water, storm drainage systems and public road. Howard County Department of Public Works.	
Director	Date
Chief, Bureau of Highways	Date



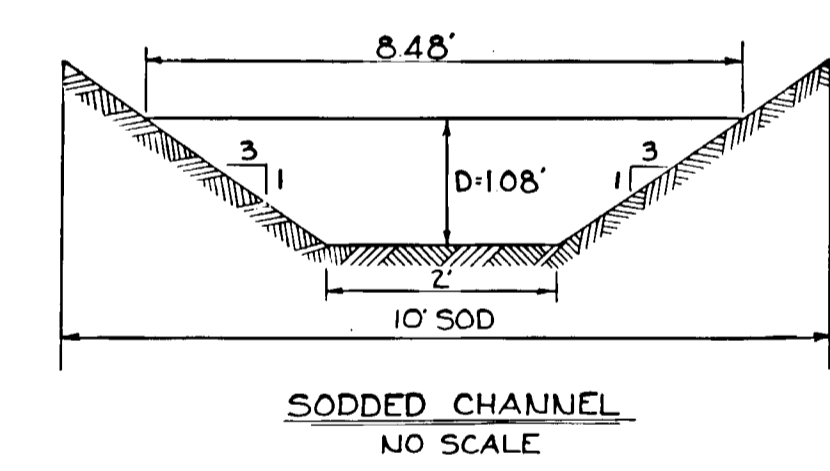
PLAN
SCALE: 1" = 20'-0"



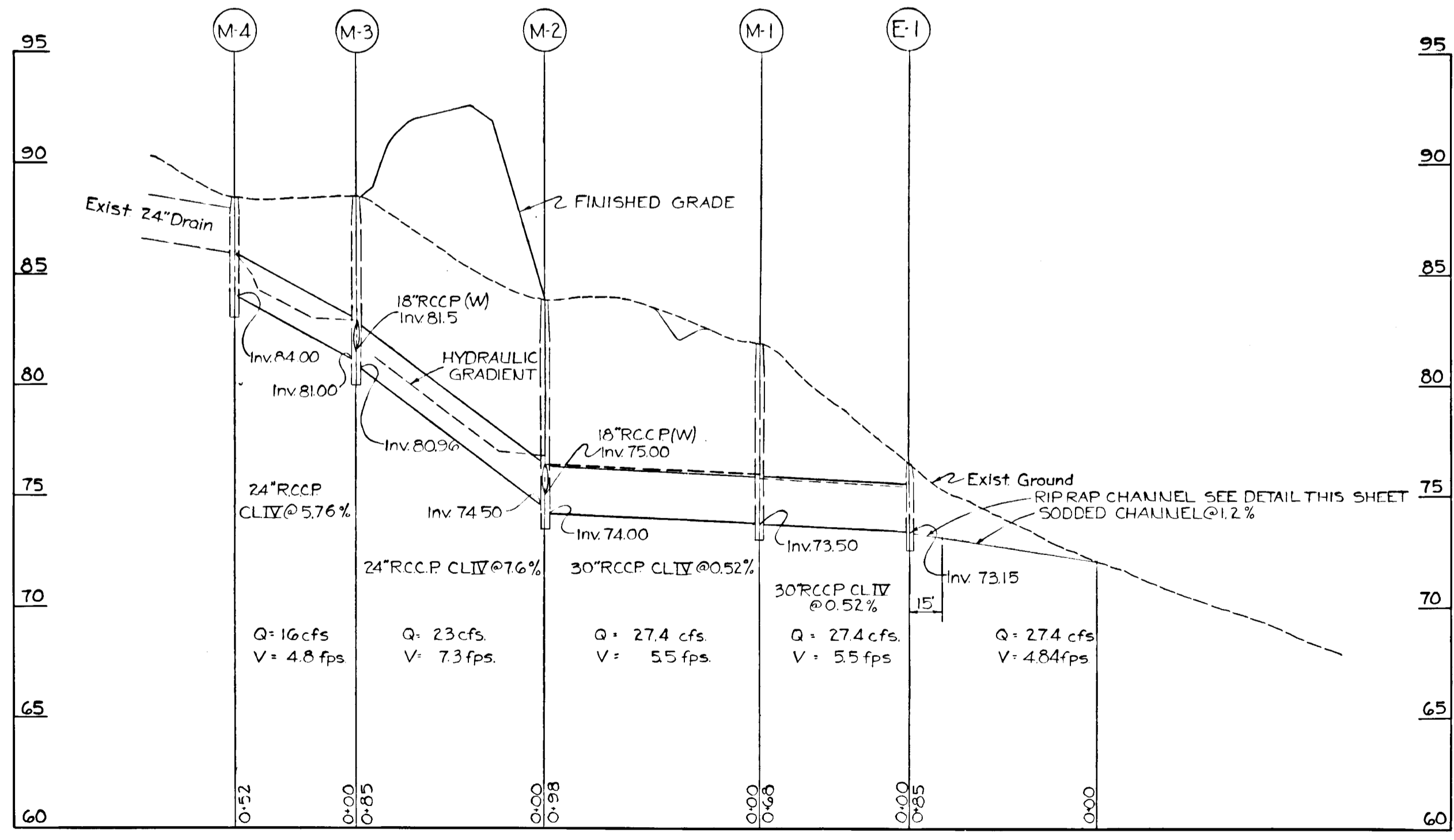
PLAN
SCALE: 1"=20'



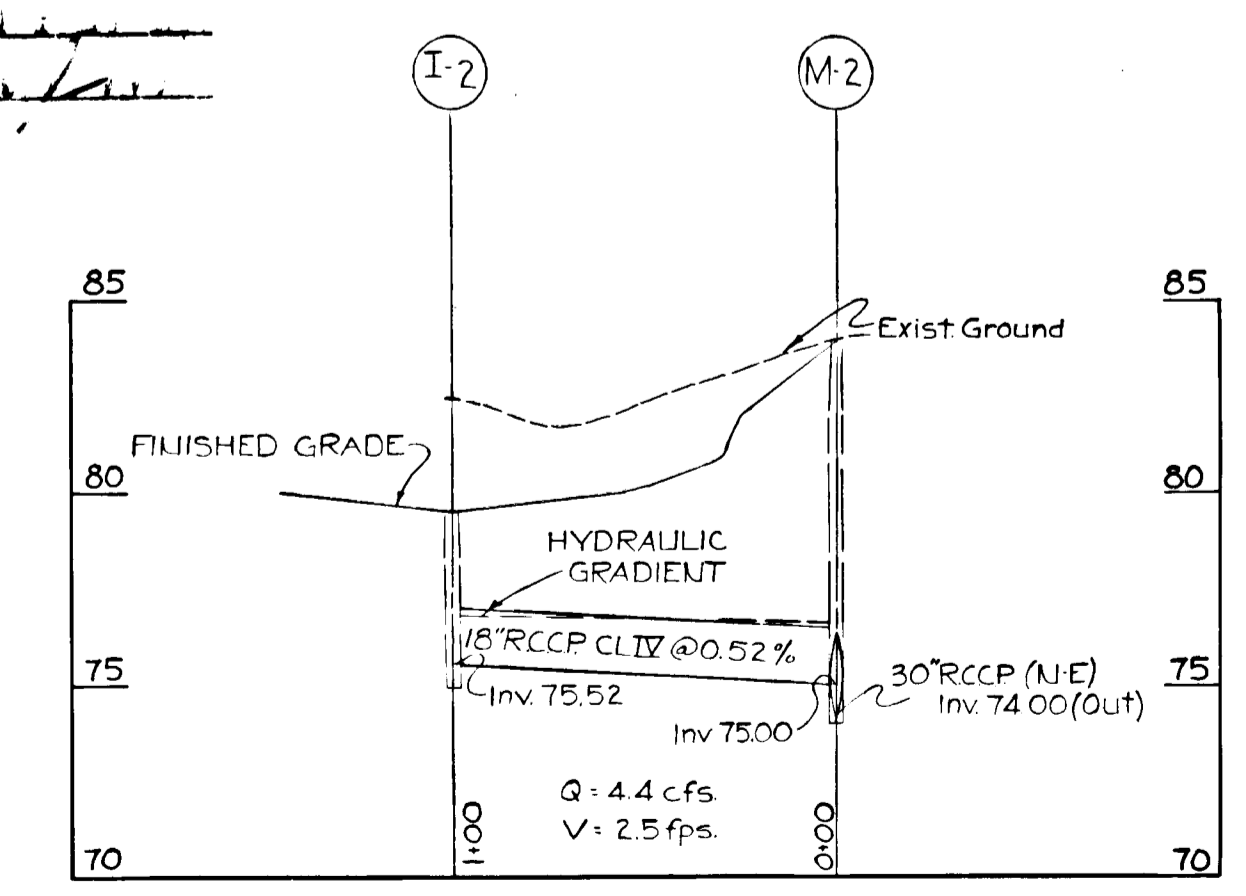
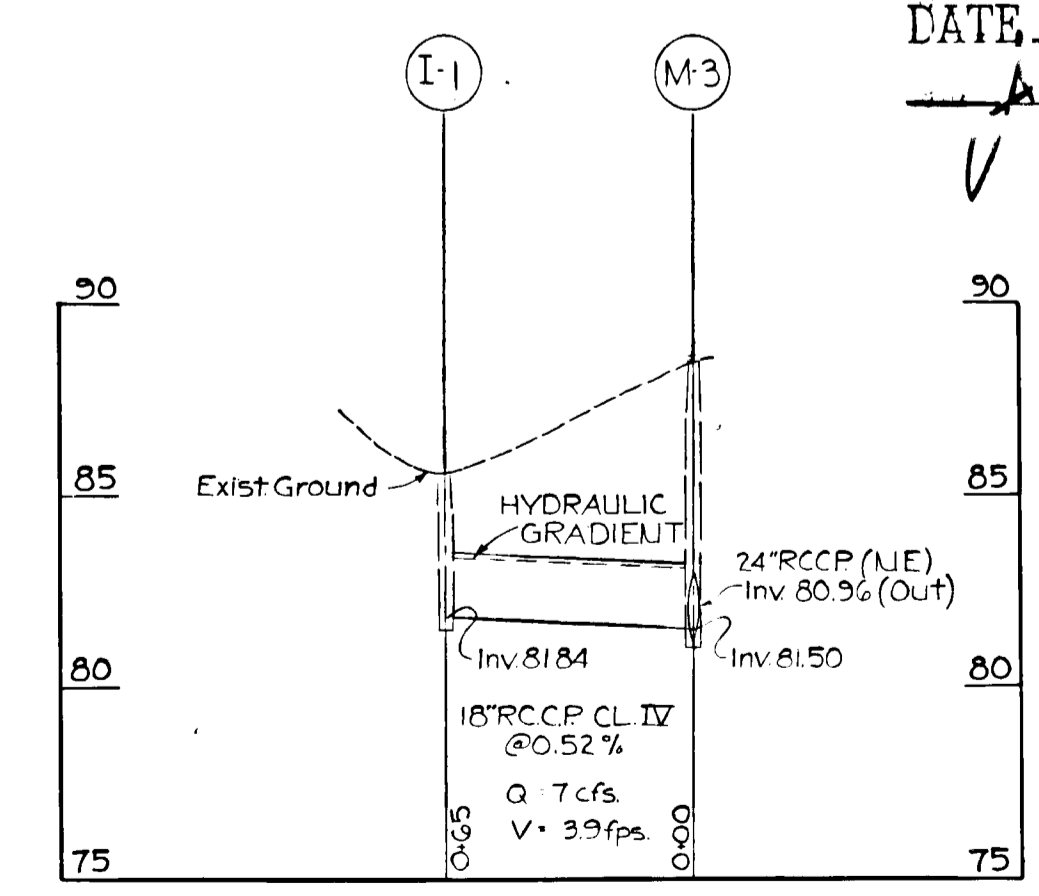
STRUCTURE SCHEDULE					
NO.	TYPE	TOP ELEV	INVERT IN	INVERT OUT	REMARKS
I-1	D-INLET	85.50	-	81.84	HO.CO. STD DWG #SDD34
I-2	SGRATE INLET	79.50	-	75.52	" " " " #SDD43
M-1	B-MANHOLE	81.00	73.50	73.50	" " " " #SDD9
M-2	A1-MANHOLE	83.90	74.50	74.00	" " " " #SDD7
M-3	B-MANHOLE	88.50	81.00	80.96	" " " " #SDD9
M-4	B-MANHOLE	88.50	85.99	84.00	" " " " #SDD9
E-1	B-ENDWALL	76.50	73.15	73.15	" " " " #SDD21



APPROVED
DIVISION OF LAND DEVELOPMENT
AND TRANSPORTATION PLANNING
HOWARD COUNTY, MARYLAND
DATE: 1/16/76
[Signature]



PROFILE
HORZ. 1"=50'
SCALE: VERT. 1"=5'



PLAN AND PROFILES
GARVEY PLUMBING AND
HEATING COMPANY
SECOND ELECTION DISTRICT HOWARD COUNTY, MARYLAND
SCALE: AS SHOWN DEC. 17, 1971

PURDUM & JESCHKE
CONSULTING ENGINEERS
AND LAND SURVEYORS
BALTIMORE, MARYLAND

[Signature]
BEVERLY M. JOHNSON REG #3407