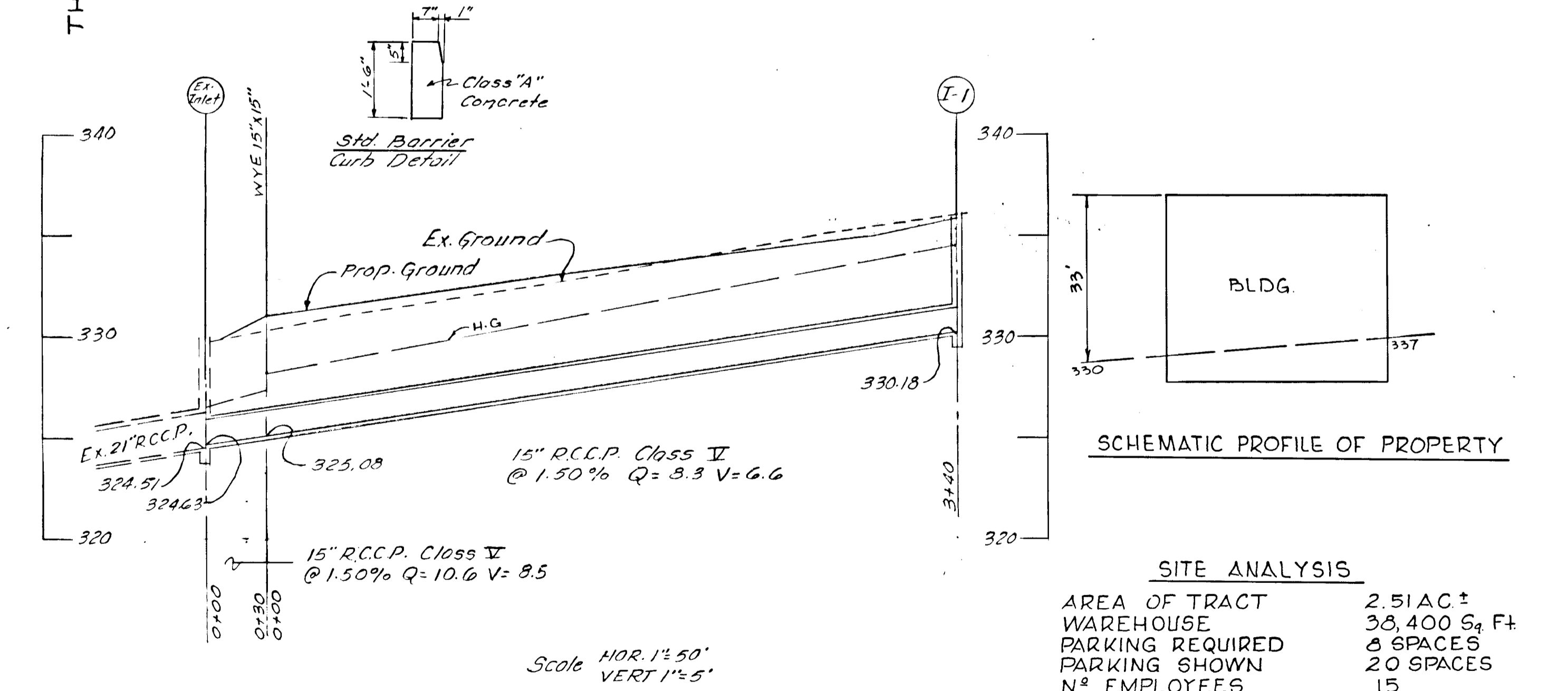
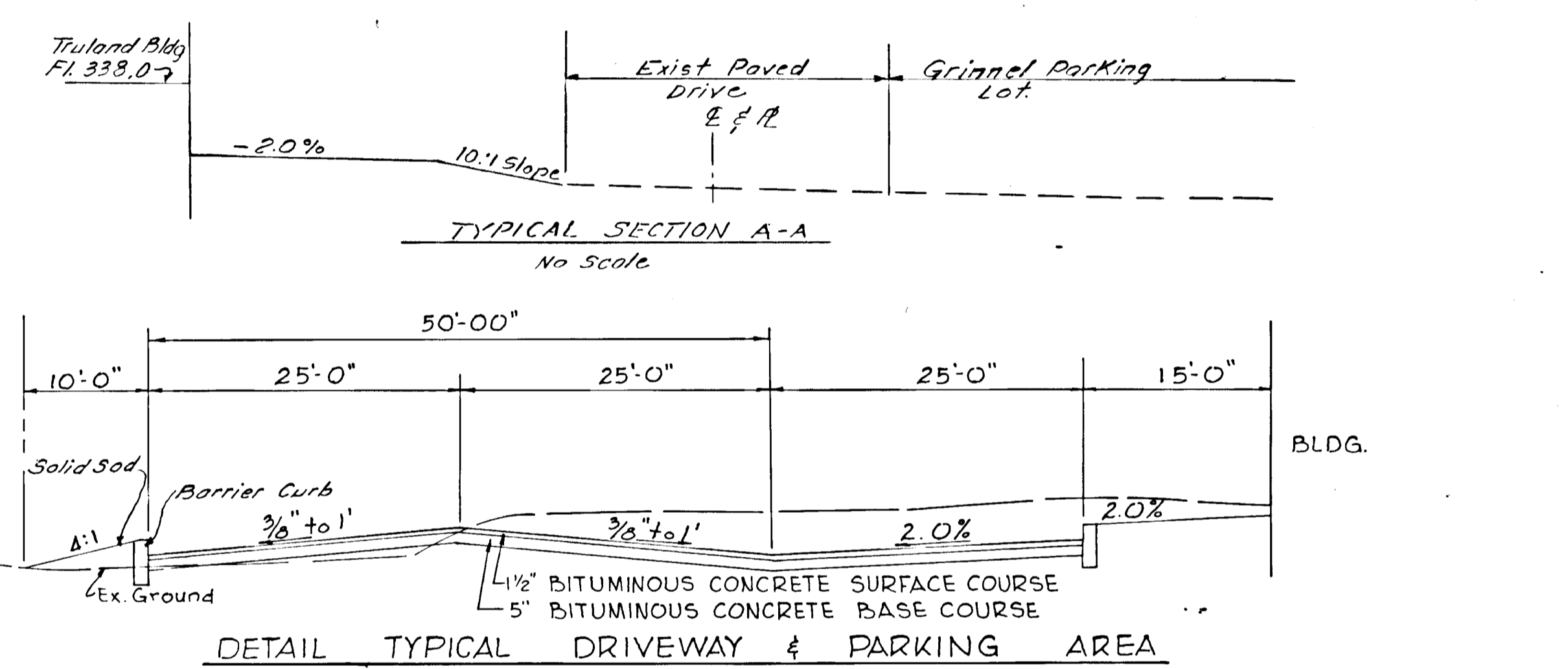
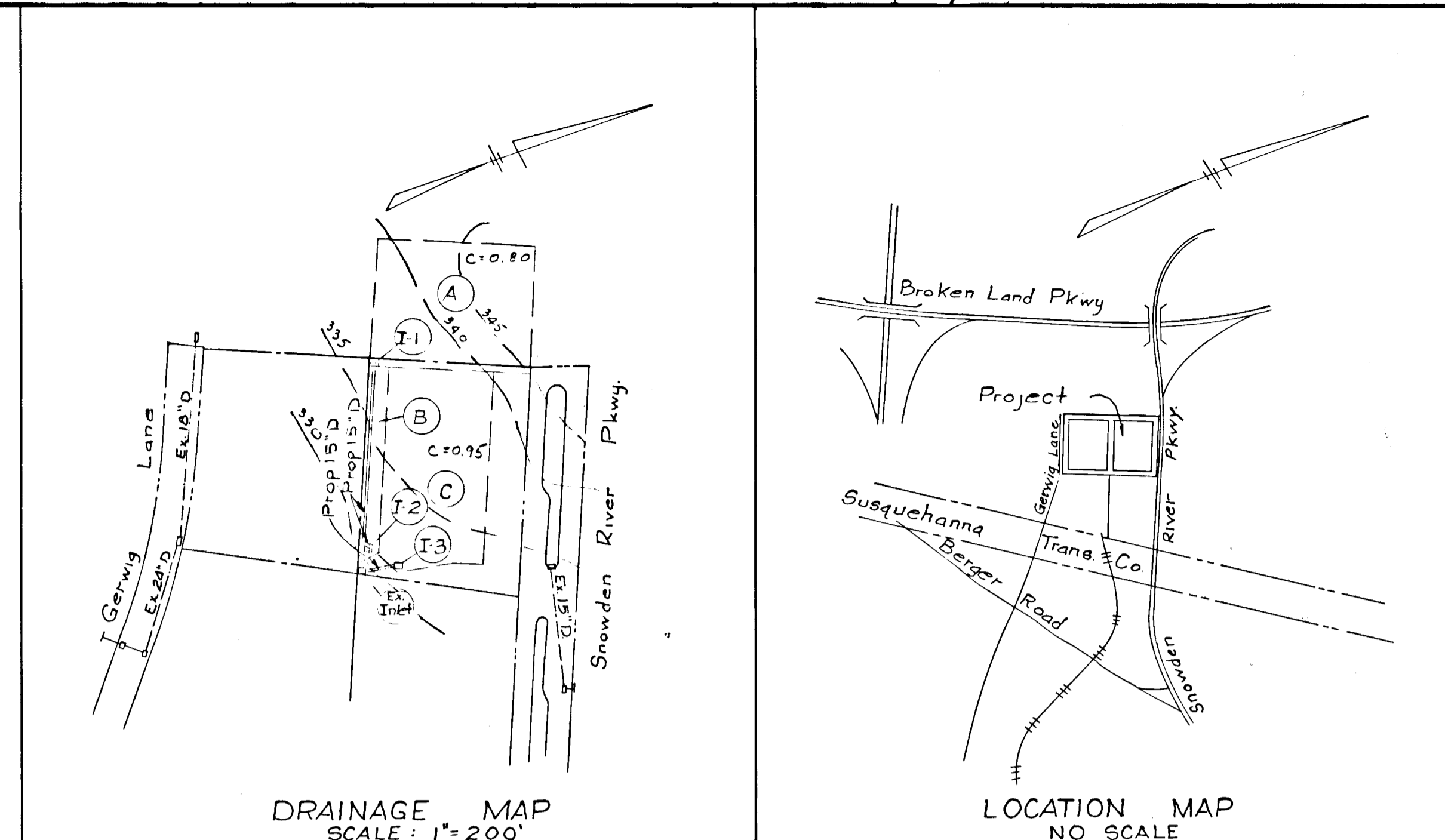
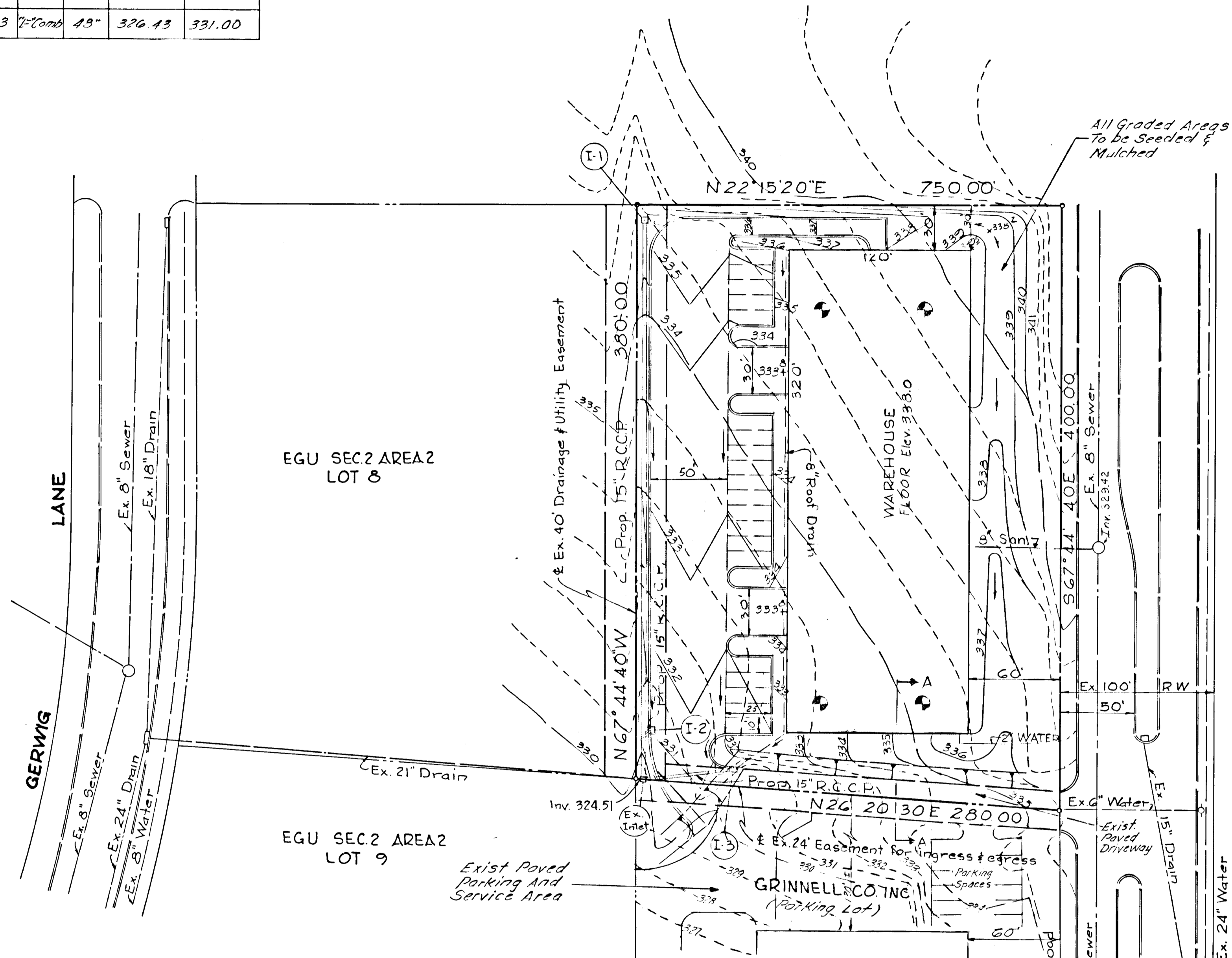


INLET SCHEDULE				
NO.	TYPE	SIZE	INV. OUT	TOP ELEV.
I-1	"D"	48"	330.18	336.00
I-2	"Comb"	48"	327.08	331.50
I-3	"Comb"	48"	326.43	331.00

All Seeding & Mulching as per Std. & Spec for Soil Erosion & Sediment Control in Urbanizing Areas  
 Seed Mixture No 2 S.P.  
 Kentucky 31 tall fescue @ 50 lbs. per Acre  
 Mulch  
 Small grain straw 1/2 to 2 tons per Acre

THE HOWARD RESEARCH AND DEVELOPMENT CORP



*Richard W. Zihm* 3-1-72  
 HOWARD SOIL CONSERVATION DISTRICT  
 CHIEF ENGINEER, DIVISION OF LAND  
 DEVELOPMENT & TRANSPORTATION PLANNING  
*Thomas M. Harris* 3-10-72  
 PLANNING DIRECTOR  
*D.H. Heblaud* 3-1-72  
 CHIEF, BUREAU OF HIGHWAYS  
*William Q. Ott* 3/1/72  
 DIRECTOR OF PUBLIC WORKS  
 APPROVED FOR PUBLIC WATER, SEWER, STORM DRAINAGE SYSTEMS & ROADS  
 COUNTY HEALTH OFFICER  
 APPROVED FOR PUBLIC  
 WATER & PUBLIC SEWER

A B ENGINEERING  
 CONSULTING ENGINEERS  
 BETHESDA, MARYLAND



THE A.B. ENGINEERING CO.  
 CONSULTING ENGINEERS  
 3002 WISCONSIN AVE. BETHESDA, MD  
 I Herby Certify That These Plans & The Control of  
 Siltation & Erosion Shown Hereon Meet The Requirements  
 Established by The Soil Conservation District.  
 James G. Angelaras PE No. 2432  
 Date 2/29/71

DEVELOPER  
 THE TRULAND ELECTRIC CORP.  
 22 & N. OAK AVE., ARLINGTON, VIRGINIA  
 I Herby Agree That All Construction & Development  
 Will be Done in Accordance With This Plan and  
 Std. Spec. For Soil Erosion and Sediment Control  
 Phone No. (703) 524-4900.  
 Date

APPROVED  
 PLANNING BOARD  
 OF HOWARD COUNTY  
 DATE 2/29/71  
*Thomas M. Harris*

SITE ANALYSIS	
AREA OF TRACT	2.51 AC ±
WAREHOUSE	38,400 Sq Ft
PARKING REQUIRED	8 SPACES
PARKING SHOWN	20 SPACES
N <sup>o</sup> EMPLOYEES	15
PRESENT ZONING	NEW TOWN
PLAT REFERENCES	PLAT BOOK 13 FOLIO 97

No.	Date	BY	Comments
1	12/21/71	F.M.	Planning Comm. Comments

PRELIMINARY PLAN  
 LOT 7 OF COLUMBIA  
 TRULAND ELECTRIC CONST  
 HOWARD CO. MD. ELEC. DIST. 6  
 SCALE: 1" = 50' NOV. 22, 1971  
 TAX MAP 42 PARCEL 375

SDP 72-51C